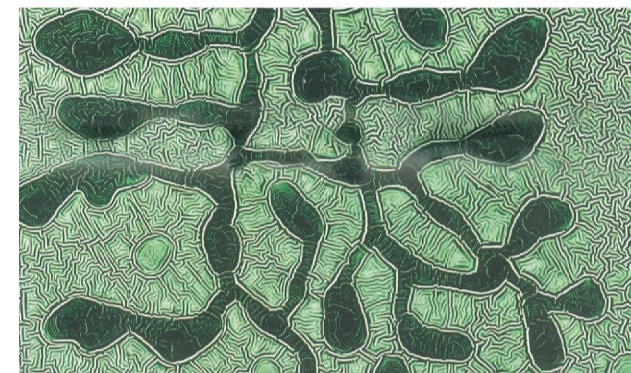


1. Terracotta spandrel panel



2. Double-glazed curtain wall facade system



3. Facade patternation printed on glass panels



4. Integrated planting



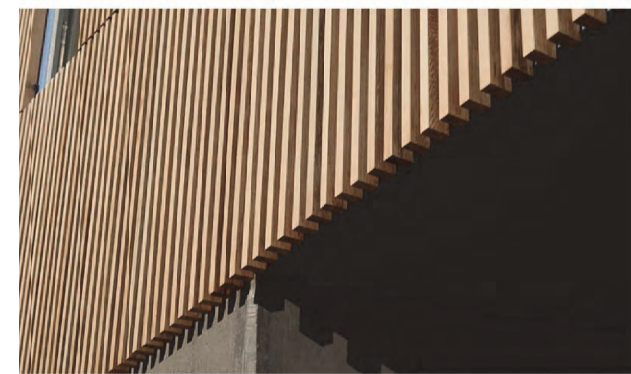
5. Operable glass louvres



6. Anodized aluminium horizontal sun shades



7. Horizontal Louvres



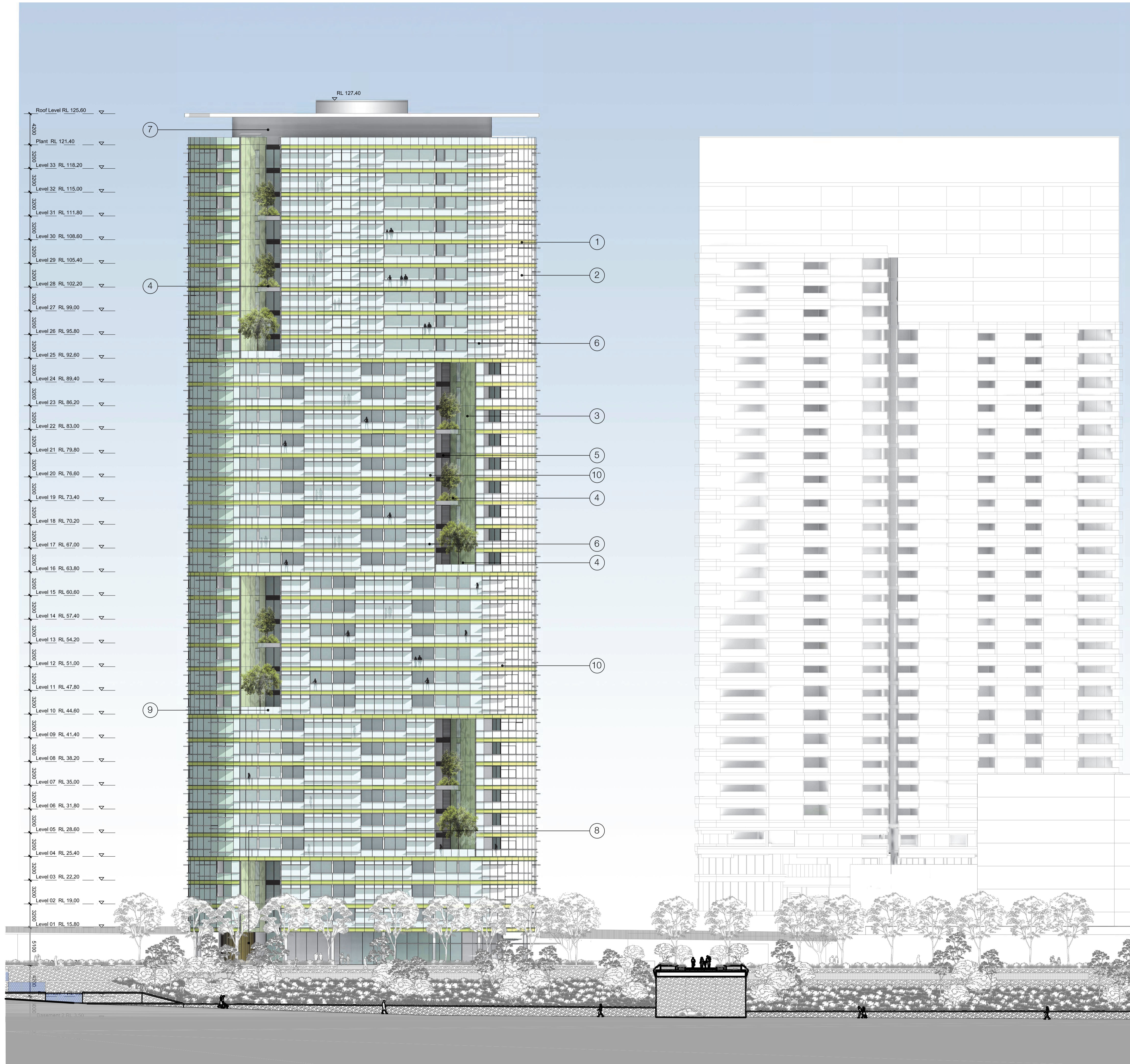
8. Vertical timber batten screens



9. Frameless glass balustrade



10. Operable glass awning windows

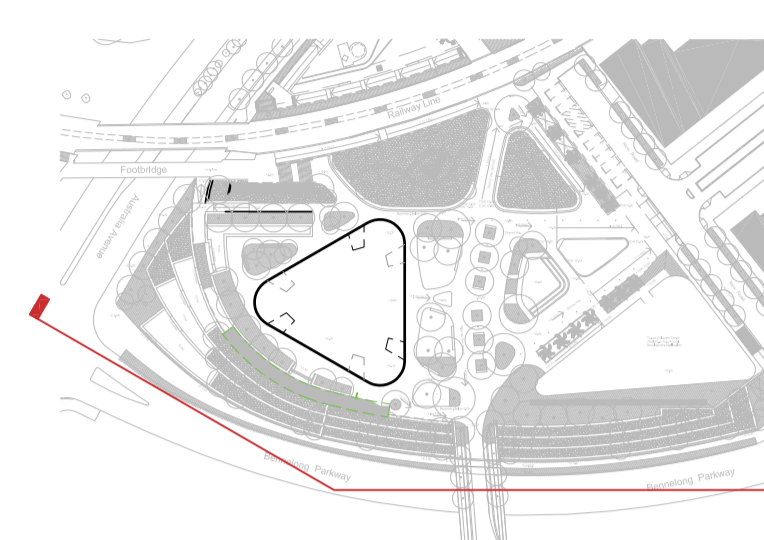


Check all dimensions and site conditions prior to commencement of any work, the purchase or ordering of any materials, fittings, plant, services or equipment and the preparation of shop drawings and/or the fabrication of any components.

All drawings to be read in conjunction with all architectural documents and all other consultants documents.

Do not scale drawings - refer to figured dimensions only. Any discrepancies shall immediately be referred to the architect for clarification.

All drawings may not be reproduced or distributed without prior permission from the architect.



Revision Summary:

Revision No.	Revision Date	Description	Initial	Checked
02	28.01.15	Development Application	KM	MLS
01	19.09.14	Development Application	KM	MLS

NOT FOR CONSTRUCTION

Revision No.	Revision Date	Description	Initial	Checked
02	28.01.15	Development Application	KM	MLS
01	19.09.14	Development Application	KM	MLS

Site 68
Sydney Olympic Park

Elevation
South-East

Scale: 1:250 @ A1 1:500 @ A3

Project No. S11611
Status DA
Plot Date 28/1/2015 3:52 PM
Plot File S:\11600-11699\11611_ecove_sopste6900_main\trans03_m...
...estones\140919_DA_FINAL_REPORT_AND_DRAWINGS\Archit [Revision]

DA05.01[02]

Melbourne 1 Nicholson Street
Melbourne VIC 3000 Australia
T 03 8664 6200 F 03 8664 6300
email mel@batesmart.com.au
http://www.batesmart.com.au

Sydney 43 Brisbane Street
Surry Hills NSW 2010 Australia
T 02 8354 5100 F 02 8354 5199
email syd@batesmart.com.au
http://www.batesmart.com.au

Bates Smart Architects Pty Ltd ABN 68 094 740 986

BATESSMART