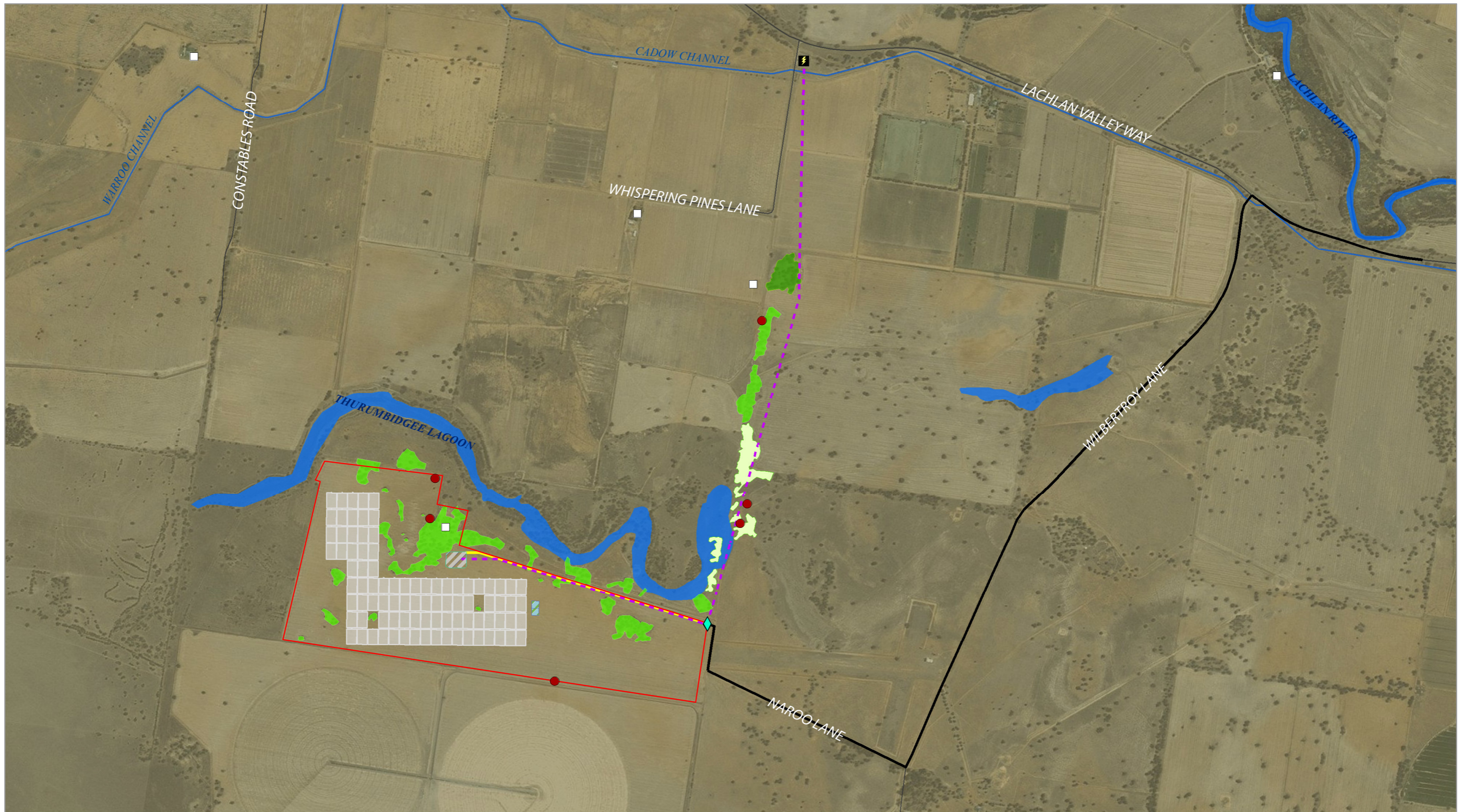


APPENDIX D: ENVIRONMENTAL CONSTRAINTS MAP



ENVIRONMENTAL CONSTRAINTS

Jemalong Solar Station

- | | | | | |
|----------------------------|---------------------------------|---|---|---------------------------------|
| ◆ Site access point | ● Aboriginal heritage/artefacts | — Solar arrays | ▨ Bunded power island, including: | ■ Western Grey Box Woodland EEC |
| ⚡ West Jemalong Substation | □ Proposal site | - Lattice-steel style tower and thermal receivers | - Weather proof control kiosks (15) | ■ River Red Gum Swampy Woodland |
| □ Nearest residents | — Construction access | - Heliostats | - Thermal storage tanks (2) | ■ Poplar Box Woodland |
| — Drainage line | — Internal access | — Road | - 66kV transformer station and switchgear in fenced enclosure | |
| ■ Waterbody | — Proposed transmission line | ▨ Evaporation ponds | - Rainwater tanks | |
| | | | - Ancillary facilities* | |

0 0.125 0.25 0.5 Kilometres

A3 @ 1:20000
 Ref: SW087_constraints_20160728
 Author: SP

Notes:
 - GIS data may be restricted to (16km) background extent
 - Infrastructure provided by Vast Solar and may be subject to change
 - Topographic data from NSW LPI 25.09.2014
 - Base map © Esri and its data suppliers.

