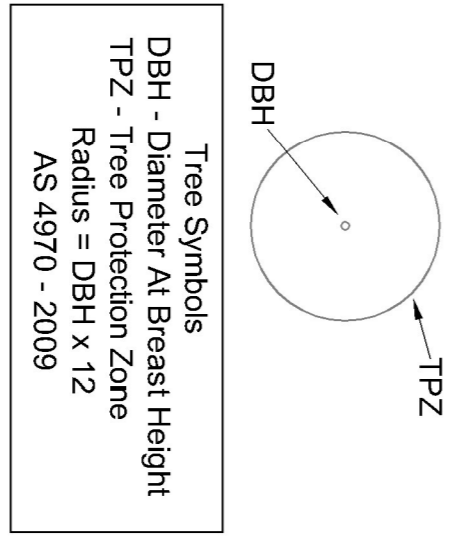
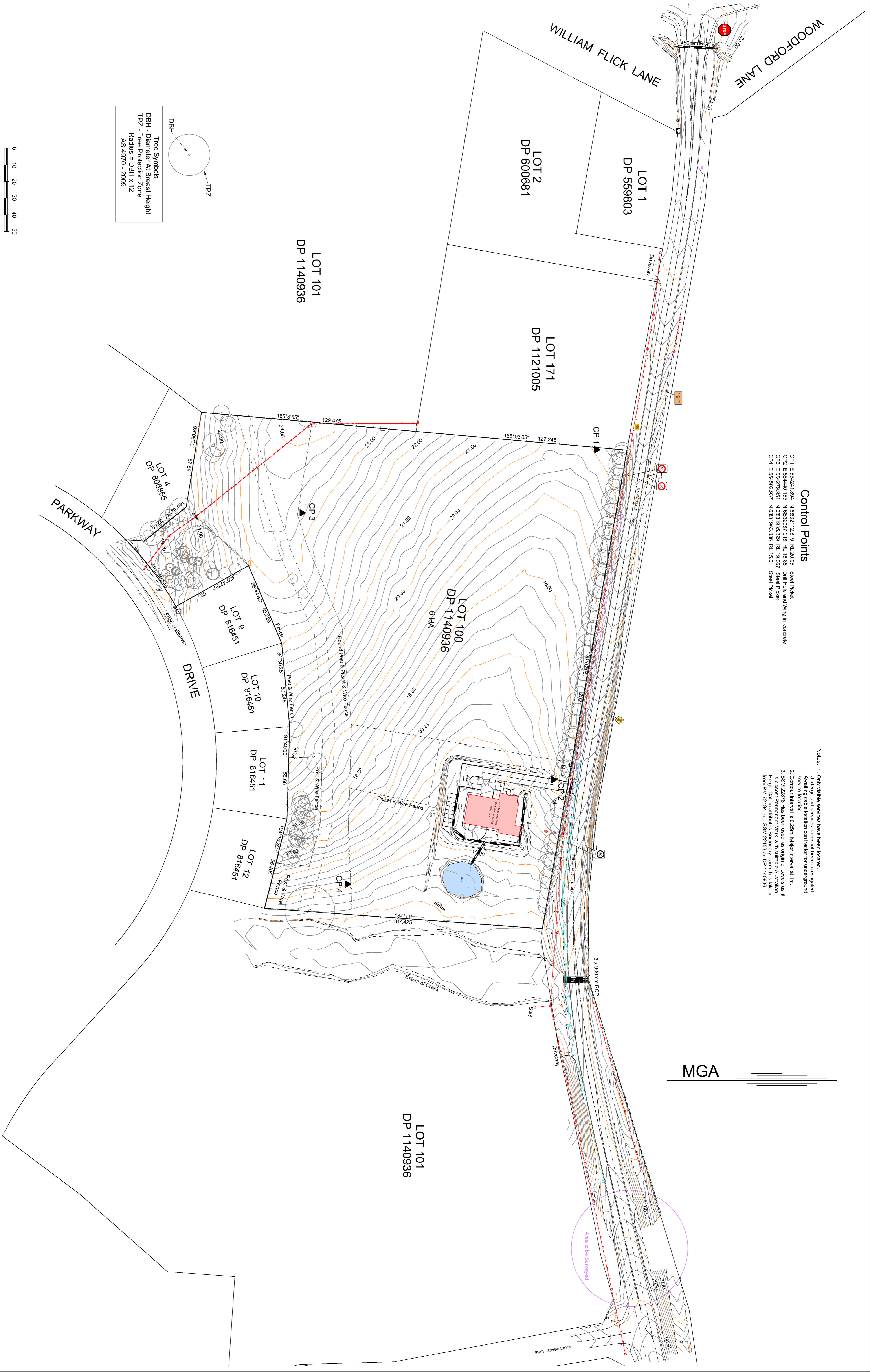


- ### Control Points
- CP1 E 564241.894 N 6832112.819 RL 20.05 Steel Picket
 - CP2 E 564440.156 N 6832087.018 RL 16.85 Drill Hole and Wing in concrete
 - CP3 E 564279.951 N 6831935.899 RL 19.267 Steel Picket
 - CP4 E 564602.937 N 6831963.036 RL 15.01 Steel Picket

- ### Notes
1. Only visible services have been located.
 2. Services shown are based on the most recent available data. Services not shown are assumed to be underground. Available cable location can be used for underground service location.
 3. Contour interval is 0.25m. Major interval at 1m.
 4. SSM 22878 has been used as origin of Level as it is closest Permanent Mark with suitable Australian Height Datum attributes. Boundary azimuth is taken from PM 72194 and SSM 22153 on DP 1140936.



Legend	SIP - Surface Inlet Pit	Notes:	Design:	Revisions	Client:	Project:	Ret No.
	PIP - Power Pole						
	ED - Electric Light Pole		Drawn: PM	Surveyors Planners Engineers	Newton Denny Chapelie	BYRON BAY HOSPITAL SITE	Sheet
	Water Meter		Approved:	100 Barker St, Casino 2470	1 & F - 96 625000	EMINGSDALE ROAD	1
	Underground Power		Datum: AHD (ORIGIN SSM 22878)	Scale 1:1000@A1		EMINGSDALE	
	Overhead power lines						