

LANDSCAPE MASTERPLAN

TLA SUBMISSION

14683.5-Hunter Indoor Sports Centre (HISC)-SK_N.vwx

HUNTER INDOOR SPORTS CENTRE (HISC)

THE BASKETBALL ASSOCIATION OF NEWCASTLE LIMITED

REVISION N_10/06/2025

Acknowledgement of Country

Terras acknowledge the Traditional Custodians of the lands on which we work and live. We pay our respects to the elders, past, present and emerging and recognise their continuing connection to country and contribution to this land.

CONTENTS

01

CONTEXT

Study of the existing

02

CONCEPT

We have a plan

03

PRINCIPLES

Study of plan

Cultural Context
Country Context
Local Context
Vegetation Communities
Site Context
Site Imagery
Site Context - Stage 1 & 2

Site Threads
Site Threads Images
Concept Imagery
Landscape Masterplan - Stage 1
Public Domain Works
Bridge and Promenade Detail
Landscape Masterplan - Stage 2
Side & Rear Pavement & Seating Detail
Seating Node Section

Designing with Country
Tree Canopy
Planting Organisational Plan
Landscape Calculations
WSUD & Hydrology
Circulation
Signage
Materials Palette
Plant Palette
Plant Schedule

CULTURAL CONTEXT

ANCIENT AND GEOLOGICAL CONTEXT

"The study area's location on the Newcastle Coal Measures, within the Lambton subgroup which consists of coal, sandstone and minor conglomerates" (Chestnut and Gobert 1976), formulates its **coal, sandstone, quartz sandstone, siltstone and shale** lithological story.

The movement and relationship with occupation are reiterated by the layering of geological history that **informs a story of sandy ecosystems before "interruption and abandonment, due to swamp inundation"** (Artefact Heritage 2016).

(Information gathered from Artefact Heritage Aboriginal Archaeological Technical Report: Hunter Basketball Stadium - Concept Design, December 2023).

FIRST NATIONS PEOPLE

The Awabakal people are the traditional custodians of the land associated with the site. The **Awabakal** people define their Country as "'Mulubinba' meaning **place of the sea ferns**, in Awabakal language...and were saltwater people, with settlements concentrated around the coast." The Awabakal landscape saw "tall, open forests of river and swamp oak, broad leaved paperbarks and scattered cabbage tree palms." Banksias, tea trees, stringy bark trees, golden wattles and blade grasses were important resources for food, medicine and weapons. Kangaroos, bird-life and lizards were dominant land-based fauna, whilst, shellfish, oysters and mussels were abundant marine and estuarine species.

The profound respect and **relationship to water, informed "denser locations of campsites close to riverbanks and lower slopes facing the water."** These campsites were critical in establishing a symbiotic relationship with water and an understanding of coastal climate and seasonal settlement that allowed for resource replenishment.

(Information gathered from Artefact Heritage Aboriginal Archaeological Technical Report: Hunter Basketball Stadium - Concept Design, December 2023).

The design team met with representatives of the Local Aboriginal Land Council (LALC), on a local site of cultural significance (Rocky Knob, in Fletcher), on the 18th January 2024. From this point the meaning of Awaba 'flat country' became apparent. Discussion centred around the respect for the land and importance of country. The ease of hunting and the movement of people through the landscape to ensure that resources were maintained. Modification of the landscape for fish trap building. It was noted that Broadmeadow would have been a swampy area and a congregation point for animals due to the fresh water resource. It was also reiterated that Country is everywhere and it is all sacred and it is important not only to look back but to also celebrate culture now.

EUROPEAN OVERLAY

The early history of Newcastle saw escaped convicts from Sydney "living with Worimi people near Port Stephens for five years" before formal British colonisation and European settlement in 1801.

The same year, Newcastle's first coal export was "ship-loaded to Cape of Good Hope, and Newcastle was established as NSW's first coal export."

Among coal resource consumption, European settlement also saw the establishment of red cedar logging, "salt boiling, salting fish, and cattle grazing" (Artefact Heritage 2023). Later, Newcastle was inaugurated as a "secondary punishment" place of convict...and operated exclusively as a penal station between 1804 and 1821."

In 1944, "the study area was utilised as a dummy gun station...and sporting oval." This is the earliest recorded use of the site in its relationship to current day usage as a sportsfield.

Since then, the urbanisation of New Lambton has seen the land cleared of natural vegetation and the establishment of housing and supplementary infrastructure. New Lambton, today, is a vastly growing urban centre, of predominantly residential, mixed use and recreational land use (NSW Government 2024).

(Information gathered from Artefact Heritage Aboriginal Archaeological Technical Report: Hunter Basketball Stadium - Concept Design, December 2023).

COUNTRY CONTEXT

14683.5 SK L102_N HUNTER INDOOR SPORTS CENTRE (HISC)_THE BASKETBALL ASSOCIATION OF NEWCASTLE LIMITED



STYX CREEK

A significant water resource for the sand flats of "Beaumont Street" providing an abundance of biodiversity to the west and linkage to the east with Cottage Creek. Now, Styx Creek functions as a major, manufactured drainage channel in and around western Newcastle linking to the Throsby Creek water catchment.



COAL

This element was, and still is, a critical resource for the Newcastle area. Awabakal people for thousands of years collected and distilled tar and oil for medicinal purposes. In the mid to late nineteenth century, coal mining and exportation become prominent in Newcastle.



COQUUN HUNTER RIVER

Was a key landscape element that provided biodiversity and resources to the prehistoric subtropical forest and coastal swamp. Provided maritime resources to Awabakal people and continues to support modern Newcastle for international trade (Port of Newcastle).



WEDGETAIL EAGLE

A significant animal to the Awabakal people symbolic of Koin or Coen, the celestial entity, which appears as Aboriginal human but in flight resembles an eagle.



AHWAR-TAH BULBOOLBA

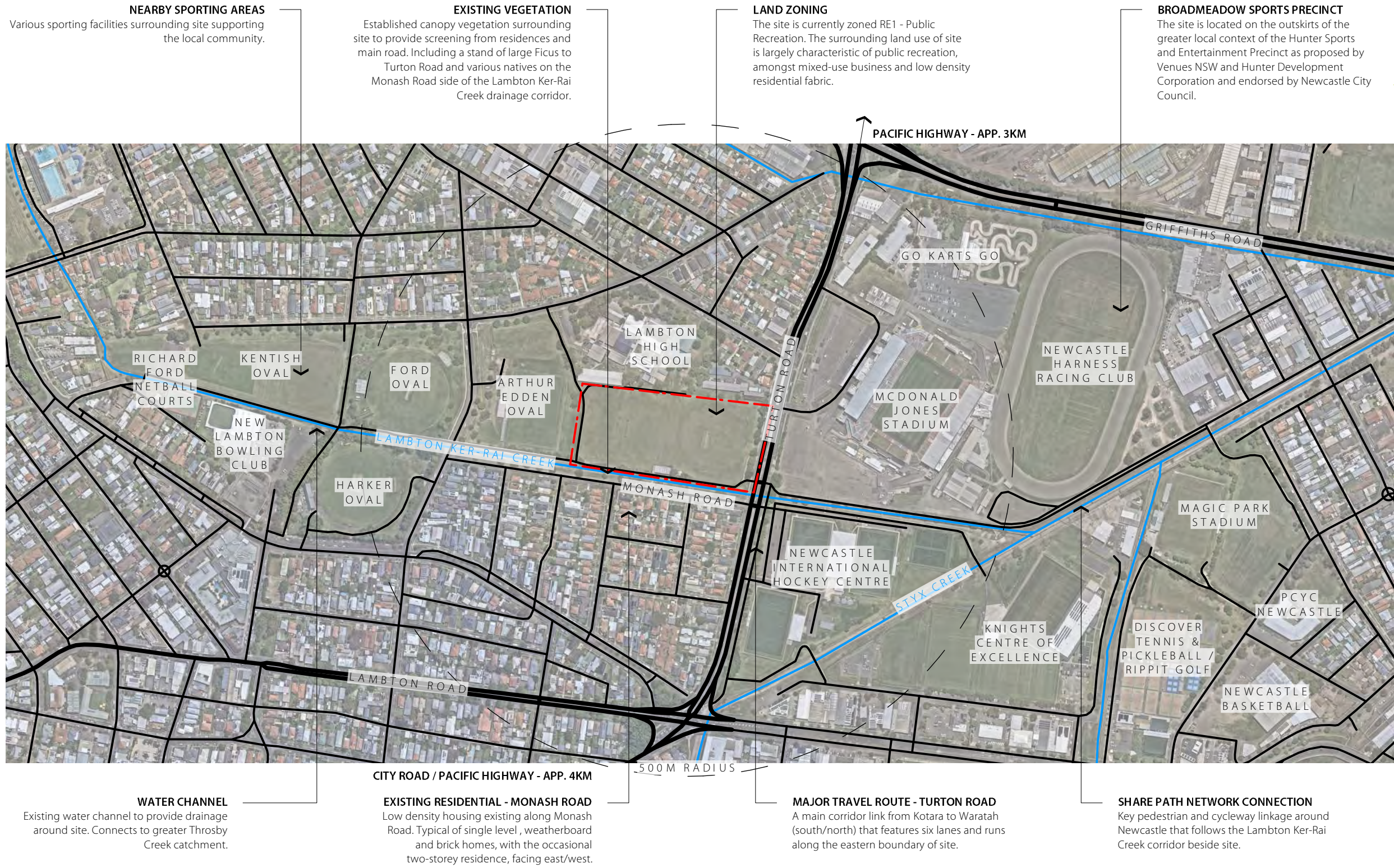
An area meaning 'flat it is, Wallaby place' that surrounded (what we now know as) Beaumont Street, which consisted of sand flats covered in tea tree shrub.



WHIBAYGANBA NOBBYS HEADLAND

A natural landmark known for its Dreamtime Story of a notorious kangaroo who was banished.

LOCAL CONTEXT



LEGEND

- SITE BOUNDARY
- MAJOR ROAD
- MINOR ROAD
- RAILWAY LINE
- WATER COURSE
- LAND ZONING E1 - LOCAL CENTRE
- LAND ZONING E3 - PRODUCTIVITY SUPPORT
- LAND ZONING E4 - GENERAL INDUSTRIAL
- LAND ZONING R2 - LOW DENSITY RESIDENTIAL
- LAND ZONING R3 - MEDIUM DENSITY RESIDENTIAL
- LAND ZONING RE1 - PUBLIC RECREATION
- LAND ZONING RE2 - PRIVATE RECREATION
- LAND ZONING SP2 - INFRASTRUCTURE

NOTES

The site is located approximately 6km west of Newcastle CBD in New Lambton and is bordered to the east by major road corridor, Turton Road and minor road, Monash Road, to the south. The southern boundary of site directly adjoins a Council owned and operated share path that follows the Lambton Ker-rai Creek to Styx Creek drainage channel.

McDonald Jones Stadium, Newcastle International Hockey Centre, Arthur Edden Oval and Ford Oval all lie within 500m of the site.

The site can be seen as an extension of the developing Hunter Sports and Entertainment Precinct as proposed by Venues NSW and Hunter Development Corporation and endorsed by Newcastle City Council. Connection points are proposed to link the upgraded existing share path and connection point to Turton Road traffic lights to continue the existing connection through the Broadmeadow sporting facilities.

NEARBY SPORTING AREAS
Various sporting facilities surrounding site supporting the local community.

EXISTING VEGETATION
Established canopy vegetation surrounding site to provide screening from residences and main road. Including a stand of large Ficus to Turton Road and various natives on the Monash Road side of the Lambton Ker-Rai Creek drainage corridor.

LAND ZONING
The site is currently zoned RE1 - Public Recreation. The surrounding land use of site is largely characteristic of public recreation, amongst mixed-use business and low density residential fabric.

BROADMEADOW SPORTS PRECINCT
The site is located on the outskirts of the greater local context of the Hunter Sports and Entertainment Precinct as proposed by Venues NSW and Hunter Development Corporation and endorsed by Newcastle City Council.

WATER CHANNEL
Existing water channel to provide drainage around site. Connects to greater Throsby Creek catchment.

EXISTING RESIDENTIAL - MONASH ROAD
Low density housing existing along Monash Road. Typical of single level, weatherboard and brick homes, with the occasional two-storey residence, facing east/west.

MAJOR TRAVEL ROUTE - TURTON ROAD
A main corridor link from Kotara to Waratah (south/north) that features six lanes and runs along the eastern boundary of site.

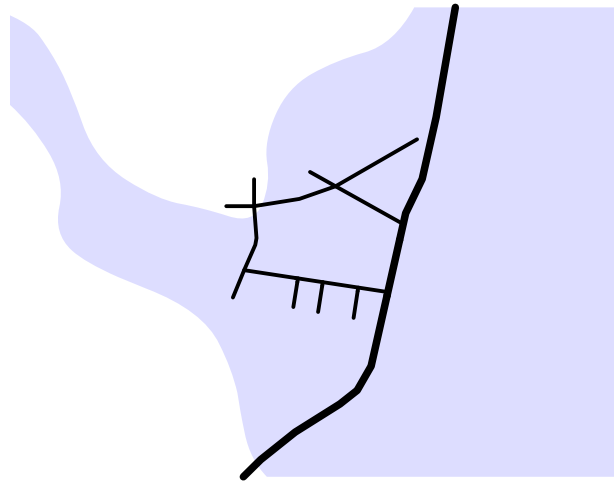
SHARE PATH NETWORK CONNECTION
Key pedestrian and cycleway linkage around Newcastle that follows the Lambton Ker-Rai Creek corridor beside site.

VEGETATION COMMUNITIES

PRE CLEARING

VEGETATION TYPE 1

Freshwater Wetlands (ID: 3967)

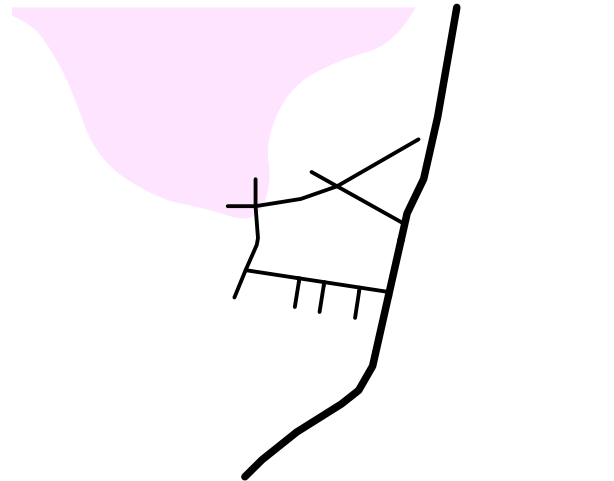


A tall to very tall freshwater sedgeland characterised by *Casuarina glauca* and *Melaleuca quinquenervia*. The mid storey consists of a range of of sedgeland and aquatic forb assemblages. The mid-storey is typical of a very high foliage cover of *Maundia triglochoides* and other aquatic forbs, rushes and sedges. (Trees Near Me 2024)

Species present include, but are not limited to:
Canopy Species: *Casuarina glauca*, *Melaleuca quinquenervia*
Mid Stratum: *Callistemon salignus*, *Melaleuca linariifolia*
Ground-Stratum: *Carex appressa*, *Gahnia clarkei*, *Juncus usitatus*, *Phragmites australis*

VEGETATION TYPE 2

Wet Sclerophyll Forests (ID: 3244)

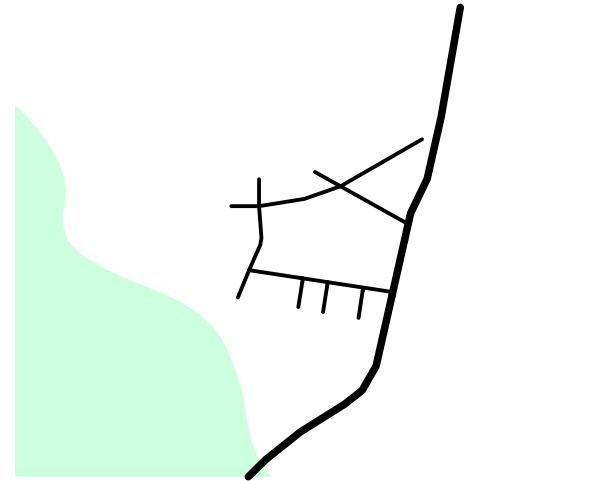


A tall to very tall sclerophyll open forest with a mid-stratum of dry and soft-leaved shrubs or small trees and a ground cover of grasses and graminoids. The canopy includes a diverse mix of trees, mahoganies and ironbarks are almost always present and grey gums are common. The mid-dense ground layer typically includes graminoids, twiners, forbs and a hardy fern. (Trees Near Me 2024)

Species present include, but are not limited to:
Canopy Species: *Corymbia maculata*, *Eucalyptus siderophloia*
Mid Stratum: *Persoonia linearis*, *Breynia oblongifolia*, *Leucopogon juniperinus*
Ground-Stratum: *Brachyscome multifida*, *Dichondra repens*, *Lomandra longifolia*, *Poa labillardierei*

VEGETATION TYPE 3

Dry Sclerophyll Forests: Shrub/Grass (ID: 3437)



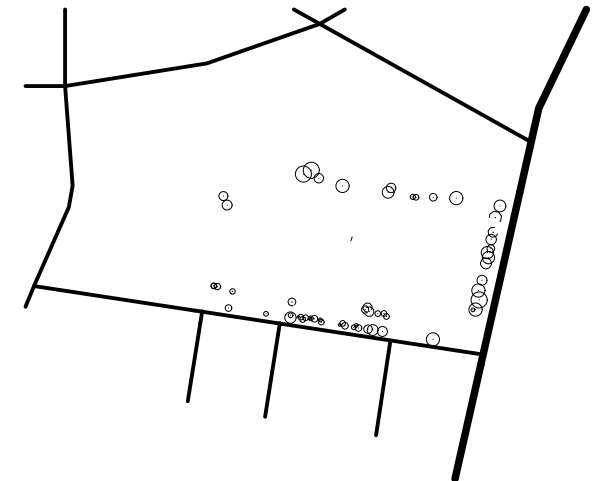
A mid-high to tall, occasionally very tall, sclerophyll open forest with a sparse dry shrub layer and grassy ground layer on exposed low elevation coastal hills and rises. The tree canopy almost always includes a high cover of *Corymbia maculata*, the grassy ground layer appearance is enhanced by the high frequency of graminoid species such as *Dianella caerulea* and *Lomandra longifolia*. (Trees Near Me 2024)

Species present include, but are not limited to:
Canopy Species: *Corymbia maculata*, *Eucalyptus paniculata*, *Banksia integrifolia*
Mid-Stratum: *Allocasuarina torulosa*, *Macrozamia communis*,
Ground-Stratum: *Dianella caerulea*, *Lomandra longifolia*, *Brachyscome multifida*

TODAY

VEGETATION TODAY

Existing Vegetation On-Site



Large existing trees to Turton Road and Monash Road interface surrounding site. Established trees of varying species. Established after all natural vegetation was cleared.

Trees currently provide vegetative buffer to arterial road, Turton Road to the east and screening to the south of site from established residences along Monash Road.

SITE IMAGERY



NOTES

The existing site has established vegetation to the eastern boundary along Turton Road and on the Monash Road side of the Lambton Ker-Rai Creek drainage corridor. This established vegetation provides a level of screening into the site.

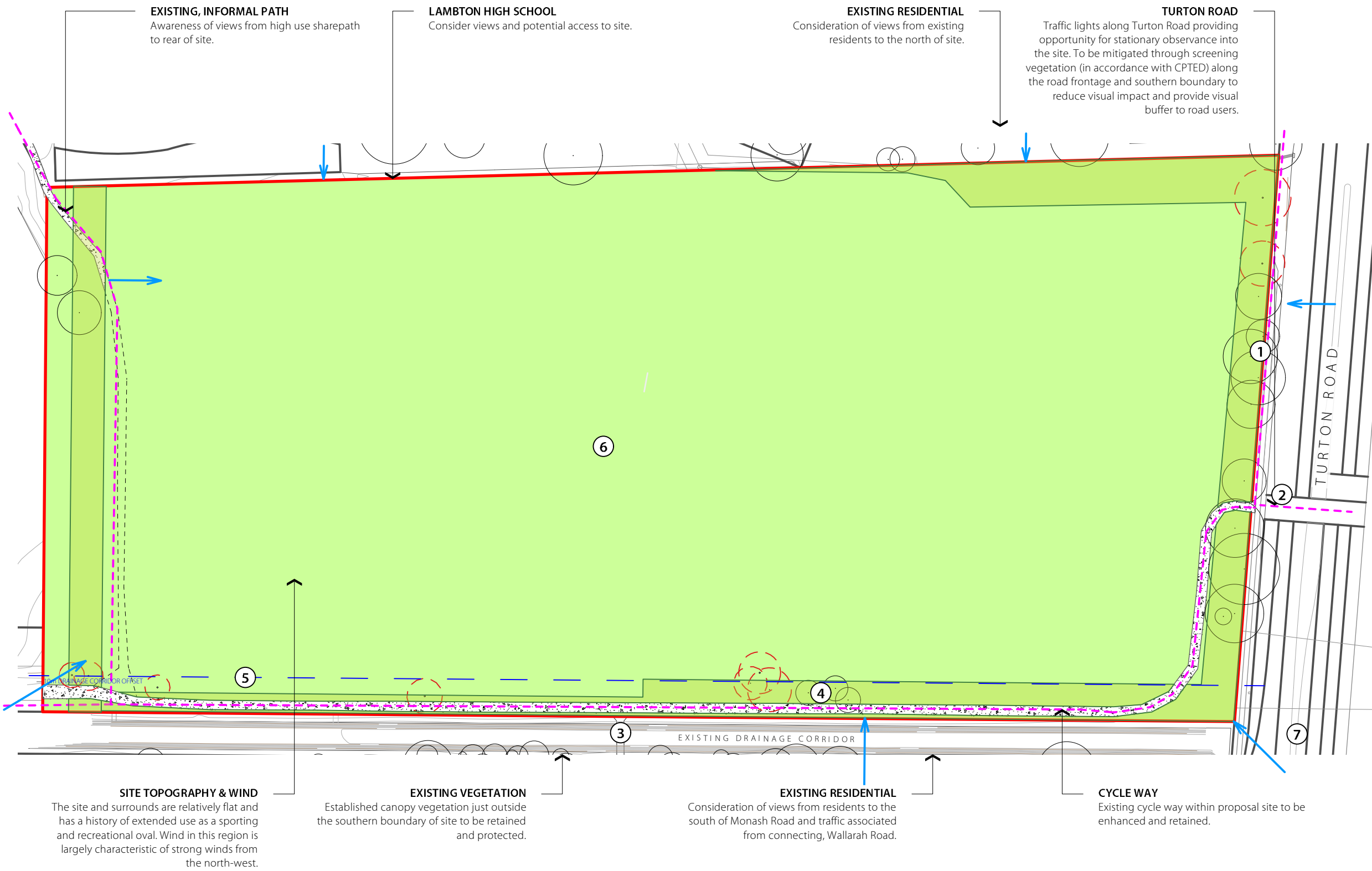
Landscape character within the immediate vicinity of the site includes low density residential fabric, main road corridors, drainage corridors, recreational space in the form of ovals and playing fields and mixed use industrial and commercial development.

The surrounding land is characteristic of public recreation amongst low density residential. The site's flat terrain and location next to a drainage corridor makes it flood prone land.

The site is currently used as an oval for sporting facilities and recreational space for Lambton High School (adjoining the northern boundary). Arthur Edden Oval, Ford Oval, Harker Oval and Kentish Oval adjoin each other west, south-west of site. The site is zoned RE1 Public Recreation.

14683.5 SK L120_N HUNTER INDOOR SPORTS CENTRE (HISC)_THE BASKETBALL ASSOCIATION OF NEWCASTLE LIMITED

SITE CONTEXT - STAGE 1



LEGEND

- SITE BOUNDARY
- - - EXISTING CIRCULATION PATHS
- VIEW CORRIDORS INTO THE SITE
- EXISTING TREES TO BE RETAINED
- EXISTING TREES TO BE REMOVED
- NOTE: SOLID TREE OUTLINE SHOWN TO SOUTH-WESTERN CORNER TREE HAS NOT BEEN NOT SURVEYED INDICATIVE OUTLINE SHOWN FROM SATELLITE IMAGERY
- PROPOSED TREE PLANTINGS AS SPECIFIED
- EXISTING CONCRETE

NOTES

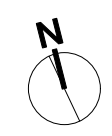
1. Retain existing trees along Turton Road where possible, to soften the built form.
2. Primary pedestrian linkage to Turton Road, with connection to the existing shared path to the south and east of the site.
3. The existing pedestrian bridge provides access to the shared path on Monash Road, crossing the existing drainage corridor and retaining the connection.
4. Existing scattered mature trees to be protected and retained to preserve the existing visual screening for southern residences.
5. 10m wide offset from drainage corridor edge for provision for potential naturalisation of drainage corridor in future, by others.
6. Open field space for school and community use.
7. Open views through to site from Turton Road due to gap in vegetation.

SITE TOPOGRAPHY & WIND
The site and surrounds are relatively flat and has a history of extended use as a sporting and recreational oval. Wind in this region is largely characteristic of strong winds from the north-west.

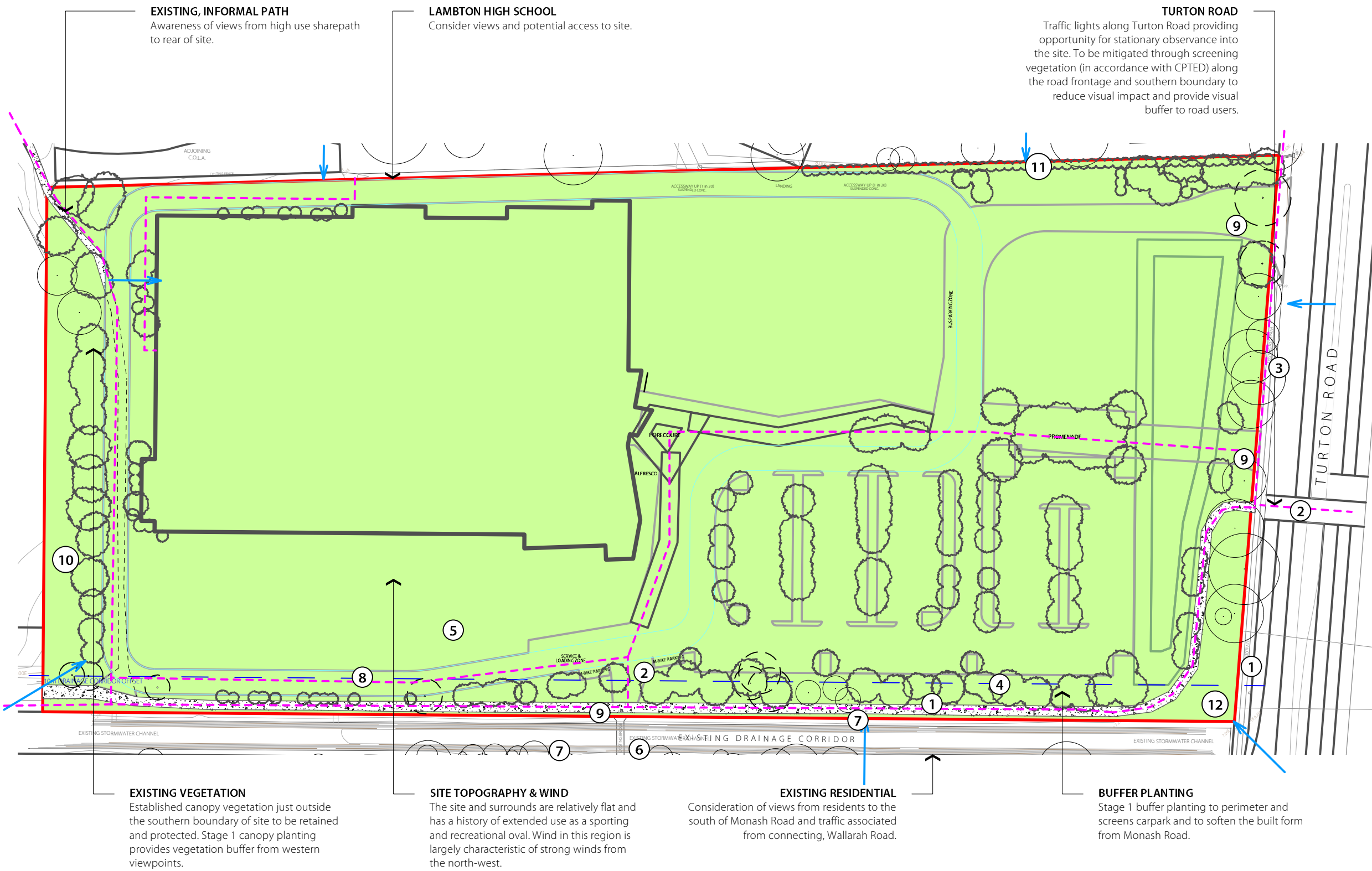
EXISTING VEGETATION
Established canopy vegetation just outside the southern boundary of site to be retained and protected.

EXISTING RESIDENTIAL
Consideration of views from residents to the south of Monash Road and traffic associated from connecting, Wallarah Road.

CYCLE WAY
Existing cycle way within proposal site to be enhanced and retained.



SITE CONTEXT - STAGE 2



EXISTING, INFORMAL PATH
Awareness of views from high use sharepath to rear of site.

LAMBTON HIGH SCHOOL
Consider views and potential access to site.

TURTON ROAD
Traffic lights along Turton Road providing opportunity for stationary observance into the site. To be mitigated through screening vegetation (in accordance with CPTED) along the road frontage and southern boundary to reduce visual impact and provide visual buffer to road users.

LEGEND

- SITE BOUNDARY
- - - EXISTING CIRCULATION PATHS
- VIEW CORRIDORS INTO THE SITE
- EXISTING TREES TO BE RETAINED
- EXISTING TREES TO BE REMOVED
- NOTE: SOLID TREE OUTLINE SHOWN TO SOUTH-WEST ERN CORNER TREE HAS NOT BEEN NOT SURVEYED INDICATIVE OUTLINE SHOWN FROM SATELLITE IMAGERY
- PROPOSED TREE PLANTINGS AS SPECIFIED
- ▭ EXISTING CONCRETE

NOTES

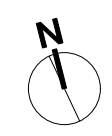
1. Supplementary planting in stage 1 creates buffer to reduce visual impact and provide vegetative screen to existing residences north of site.
2. Primary pedestrian linkage to Turton Road and connection to existing sharepath south and east of site. Pavement patterning to create movement through site
3. Retain existing trees where possible to Turton Road to soften the built form
4. Planting of native species to create a sense of place unique to the site
5. Potential open space for gathering to be developed.
6. Existing pedestrian bridge provides access to the shared path on Monash Road, crossing the existing drainage corridor and retaining the connection
7. Existing, scattered, mature trees to be protected and retained to protect existing screening from southern residences.
8. 10m wide offset from the edge of the drainage corridor is provided to allow for potential future naturalisation of the corridor by others.
9. Wayfinding signage through site
10. Canopy vegetation established stage 1 provides visual buffer.
11. Stage 1 planting provides visual screen to neighbouring residents to the north.
12. Stage 1 canopy planting screens proposal from Turton Road.

EXISTING VEGETATION
Established canopy vegetation just outside the southern boundary of site to be retained and protected. Stage 1 canopy planting provides vegetation buffer from western viewpoints.

SITE TOPOGRAPHY & WIND
The site and surrounds are relatively flat and has a history of extended use as a sporting and recreational oval. Wind in this region is largely characteristic of strong winds from the north-west.

EXISTING RESIDENTIAL
Consideration of views from residents to the south of Monash Road and traffic associated from connecting, Wallarah Road.

BUFFER PLANTING
Stage 1 buffer planting to perimeter and screens carpark and to soften the built form from Monash Road.



LANDSCAPE CONCEPT

14683.5 SK L200_N HUNTER INDOOR SPORTS CENTRE (HISC)_THE BASKETBALL ASSOCIATION OF NEWCASTLE LIMITED



412 KING STREET NEWCASTLE NSW AUSTRALIA 2300
TERRAS.COM.AU PH: 49 294 926

SITE THREADS

HUMAN CONNECTIONS WELCOMING PLACE

The site sits on the outskirts of the Hunter Sports and Entertainment Precinct and will be used by sporting groups from all over the state. The space is to be a welcoming space with strong corridors of movement throughout the site to facilitate high traffic volumes. A place that offers opportunity for break out spaces for teams and groups to gather external to the building.

CONNECTION TO COUNTRY STORY OF THE PLAINS

The lowland areas and flats (awaba) were rich in resources attracting people and animals. They were areas of movement from the high-level ridgelines down the flats and along the watercourses. The plains were places to meet, gather, perform, tell stories and share knowledge. There is the opportunity to use patterning, native vegetation and materials to tell the story of the plains and its former use.

CLIMATE POSITIVE DESIGN

The design approach will incorporate water sensitive urban design principles to protect and enhance the natural water systems within the local environment by integrating stormwater treatment into the landscape, improving the quality of water draining from the development into receiving environments, reducing runoff and peak flows increasing local detention times and minimising impervious areas. Planting will be used to provide filtration to effectively remove pollutants, enhancing the quality of water entering streams and rivers. Canopy planting throughout the site will be extensive to achieve shade to parking and gathering spaces, reducing the urban heat island effect. Materials selected will be local where possible with a low carbon footprint.

LANDSCAPE VISION

To celebrate the history of the site, from its previous existence as a swamp as part of the Plains, rich in resources, an area of movement, gathering and meeting with a strong relationship to water, to its proposed use as a multifunctional indoor sports centre for all communities, through carefully considered and refined landscape initiatives that encourage meaningful connection and celebration of place.

SITE THREADS IMAGES



HUMAN CONNECTIONS
WELCOMING PLACE

CONNECTION TO COUNTRY
STORY OF THE PLAINS

CLIMATE POSITIVE DESIGN



14683.5 SK L202_N HUNTER INDOOR SPORTS CENTRE (HISC)_THE BASKETBALL ASSOCIATION © NEWCASTLE LIMITED

CONCEPT IMAGERY



Reestablishment of views to large vegetated wetland areas +



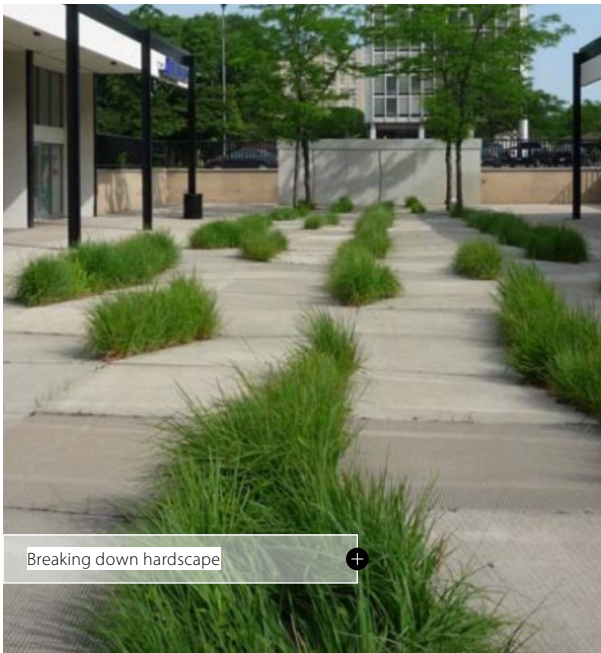
Blurring the transition between natural and hardscape +



Creating diversity in visual language of large hardstand areas +



Linear pop-outs softened by hardscape to create intimate gathering spots +



Breaking down hardscape +



Continuation of materiality over varying levels and surfaces, softness in hardscape form +

NOTES

In coordination with the Site Threads, these are the underlying principles for choice of form, character and concept within the Landscape Masterplan.

The threads have been developed with a unique understanding of the site, to embrace the distinct sense of place that will be designed to carry through these principles both visually and emotionally as communities gather and interact on the site in different ways.

14683.5 SK L203_N HUNTER INDOOR SPORTS CENTRE (HISC)_THE BASKETBALL ASSOCIATION OF NEWCASTLE LIMITED

LANDSCAPE MASTERPLAN - STAGE 1



LEGEND

- SITE BOUNDARY
- RURAL FIRE SERVICE: LARGE ISOLATED BUILDING 6M SEALED SURFACE PATH
- EXISTING TREES TO BE RETAINED
- EXISTING TREES TO BE REMOVED
- NOTE: SOLID TREE OUTLINE SHOWN TO SOUTH-WEST ERN CORNER TREE HAS NOT BEEN SURVEYED INDICATIVE OUTLINE SHOWN FROM SATELLITE IMAGERY
- PROPOSED TREE PLANTINGS AS SPECIFIED
- SCREENING/HEDGE PLANTING
- FEATURE PLANTING
- MEDIUM SHRUBS AND PLANTS
- LARGE SWALE PLANTING
- RAINGARDEN PLANTING
- EXISTING TURF AREAS
- PREMIUM TURF AREAS
- PERMEABLE PAVING
- EXISTING CONCRETE
- NEW CONCRETE
- TEMPORARY GRAVEL
- FEATURE PAVING 01
- FEATURE PAVING 02
- FEATURE DECKING
- FEATURE TIMBER SEAT

ACCESS
6m wide access path for fire to the perimeter of the building

ENTRY JOURNEY
Covered awning from carparking to main entry provides shade to entry journey

MAIN VEHICULAR ENTRY
Main vehicular entry from Turton Road to site with feature signage and planting to boulevard

LARGE SWALE
Mass planted swale with native species to created habitat, provide water polishing and provide vegetated entry threshold to site

LAMBTON HIGH SCHOOL CONNECTION POINT
School connection point to the north retained

TEMPORARY OPEN SPACE
Open space during Stage 1 for public use

NORTHERN BOUNDARY
Planting to provide screening along the northern boundary at interface with units. 2.1m high palisade fence provided along this interface with planting to screen water tanks from residents

EXISTING TREES TO TURTON ROAD
Existing trees to be retained and protected along Turton Road boundary to provide screening and retain canopy coverage. Native supplementary planting where existing tree are to be removed

NATIVE CORRIDOR
Planting of native species to establish a sense of place that is unique to the site. Maximise canopy planting opportunities to provide visual buffer, habitat and reduce heat island effect

MONASH ROAD ENTRY
Continuation of formal pedestrian entry from Monash Road pedestrian bridge.

CARPARK PLANTING & RAINGARDEN
Native planting of *Lophostemon confertus*, *Tristaniopsis laurina* and *Brachychiton populneus* to carpark to maximise canopy coverage of hardstand area and to reduce the heat island effect. Mass planting between parking rows with bio swales. Kerb inlet gardens to support on-site water management and vegetative control. Widened median strip in the car park to be planted with appropriate species. Garden beds to extend to wheel stops, with central shade trees to further reduce the heat island effect and enhance infiltration and water polishing

BOULEVARD ENTRY
Main pedestrian entry to site from Turton Road with bridge over planted swale, creating gathering, entry threshold and street activation. Planting of *Corymbia variegata* to provide shade to entry journey on approach to building. Information panel about the 'plains' to be developed with CWC consultant

NATIVE VEGETATION BUFFER
Mass planting of native grasses and shrubs to 1m high to reinforce riparian corridor with trees above to provide screening of development from neighbouring residences to the south. Views beneath trees (1.8m high canopy clearance) to maintain visibility for CPTED

PATTERNING
Pavement patterning to reinforce movement of people, fauna and water through the landscape. Where practical edges will be broken down blurring the transition between hard and soft elements

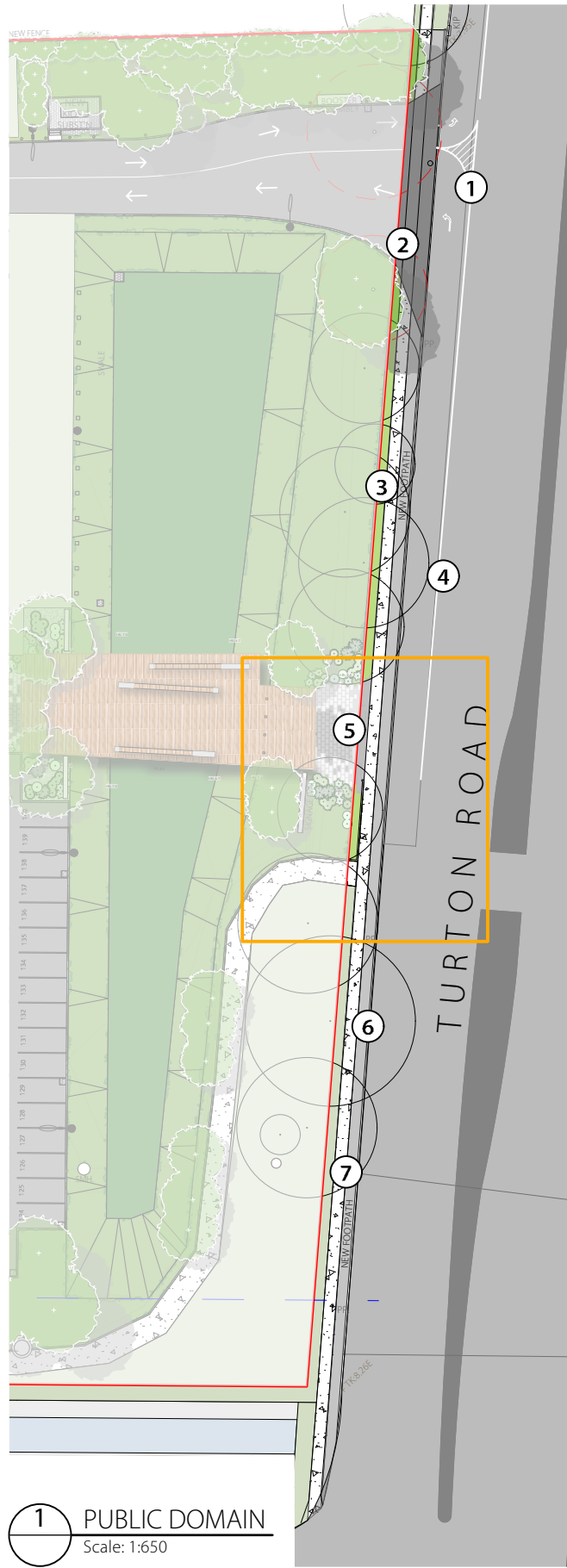
FLAGPOLES
Proposed locations for flags (Aboriginal, Torres Strait Islander and Australian flag) on site if desired. Concept and location to be developed during further Connection with Country consultation

SHAREPATH
Existing sharepath to be retained

WESTERN BUFFER
Existing trees to be retained and new native tree planting to western boundary for screening and shade



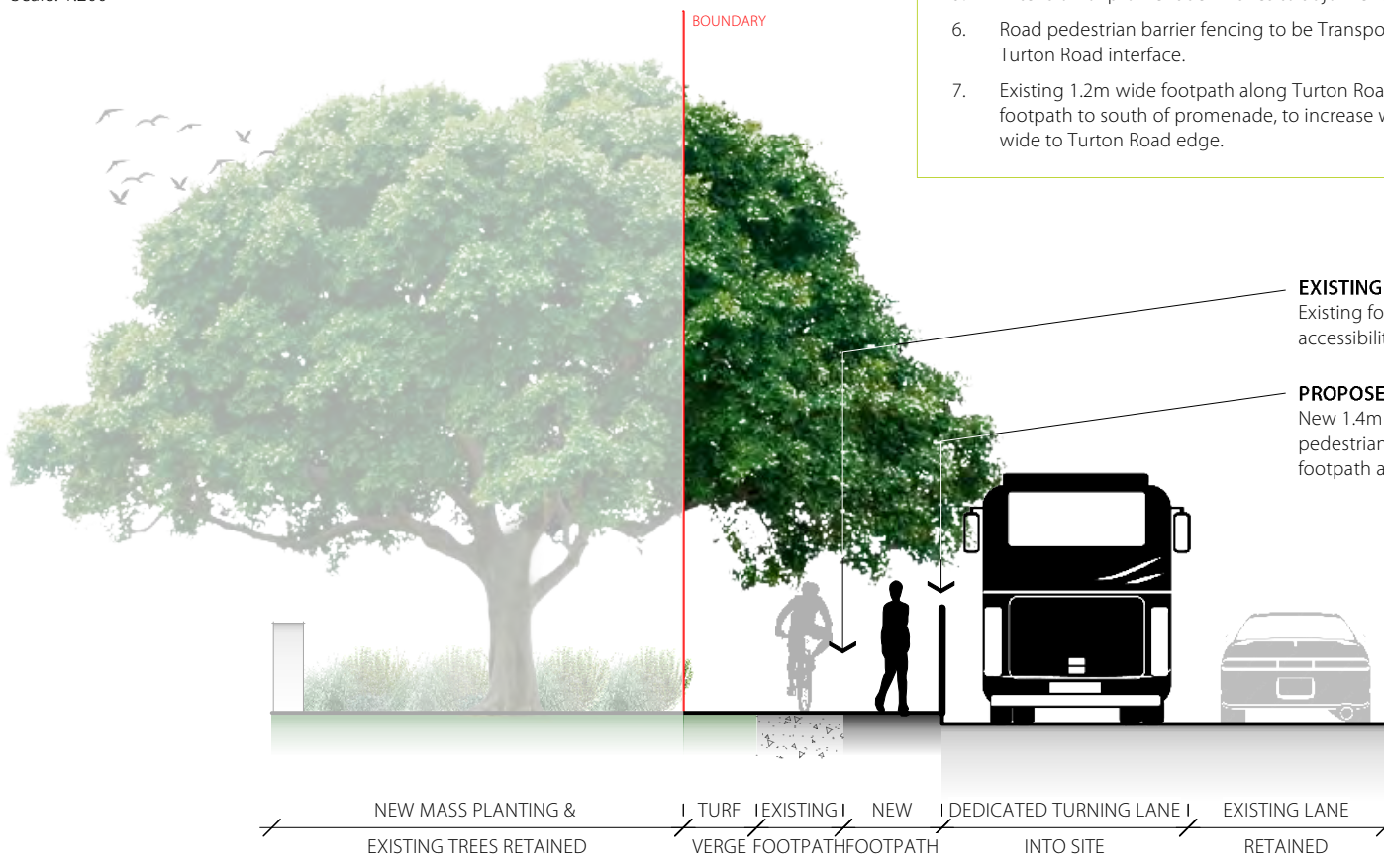
PUBLIC DOMAIN WORKS



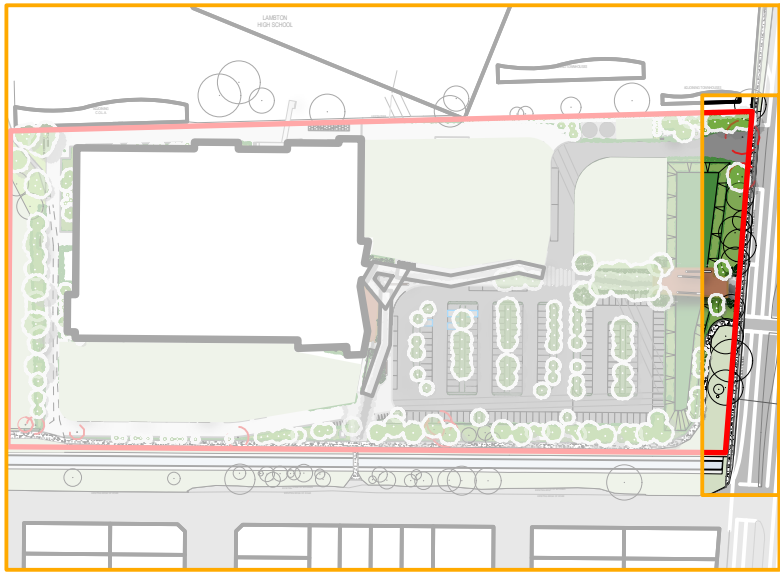
1 PUBLIC DOMAIN
Scale: 1:650



2 PUBLIC DOMAIN DETAIL
Scale: 1:200



3 PUBLIC DOMAIN WORKS ELEVATION
Scale: 1:100

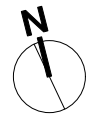


- NOTES**
1. Linemarking to direct traffic on Turton Road
 2. Driveway entering and exiting site
 3. Turf to be made good if disrupted.
 4. Left turn lane for Turton Road traffic
 5. Extension of promenade finishes to adjoin existing footpath
 6. Road pedestrian barrier fencing to be Transport for NSW compliant to Turton Road interface.
 7. Existing 1.2m wide footpath along Turton Road to be retained. New footpath to south of promenade, to increase width to approximately 2.2m wide to Turton Road edge.

LEGEND

- SITE BOUNDARY
- RURAL FIRE SERVICE: LARGE ISOLATED BUILDING 6M WIDE SEALED SURFACE PATH
- EXISTING TREES TO BE RETAINED
- EXISTING TREES TO BE REMOVED
NOTE: SOLID TREE OUTLINE SHOWN TO SOUTH-WEST ERN CORNER TREE HAS NOT BEEN NOT SURVEYED INDICATIVE OUTLINE SHOWN FROM SATELLITE IMAGERY
- PROPOSED TREE PLANTINGS AS SPECIFIED
- SCREENING/HEDGE PLANTING
- FEATURE PLANTING
- MEDIUM SHRUBS AND PLANTS
- LARGE SWALE PLANTING
- RAINGARDEN PLANTING
- EXISTING TURF AREAS
- PREMIUM TURF AREAS
- PERMEABLE PAVING
- EXISTING CONCRETE
- NEW CONCRETE
- TEMPORARY GRAVEL
- FEATURE PAVING 01
- FEATURE PAVING 02
- FEATURE DECKING
- FEATURE TIMBER SEAT
- 1400 ROADSIDE PEDESTRIAN FENCING

14683.5 SK L205_N HUNTER INDOOR SPORTS CENTRE (HISC) - THE BASKETBALL ASSOCIATION OF NEWCASTLE LIMITED



BRIDGE AND PROMENADE DETAIL



LEGEND

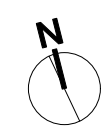
- SITE BOUNDARY
- RURAL FIRE SERVICE: LARGE ISOLATED BUILDING 6M WIDE SEALED SURFACE PATH
- EXISTING TREES TO BE RETAINED
- EXISTING TREES TO BE REMOVED
NOTE: SOLID TREE OUTLINE SHOWN TO SOUTH-WEST ERN CORNER TREE HAS NOT BEEN NOT SURVEYED INDICATIVE OUTLINE SHOWN FROM SATELLITE IMAGERY
- PROPOSED TREE PLANTINGS AS SPECIFIED
- SCREENING/HEDGE PLANTING
- FEATURE PLANTING
- MEDIUM SHRUBS AND PLANTS
- LARGE SWALE PLANTING
- RAINGARDEN PLANTING
- EXISTING TURF AREAS
- PREMIUM TURF AREAS
- PERMEABLE PAVING
- EXISTING CONCRETE
- NEW CONCRETE
- TEMPORARY GRAVEL
- FEATURE PAVING 01
- FEATURE PAVING 02
- FEATURE DECKING
- FEATURE TIMBER SEAT

NOTES

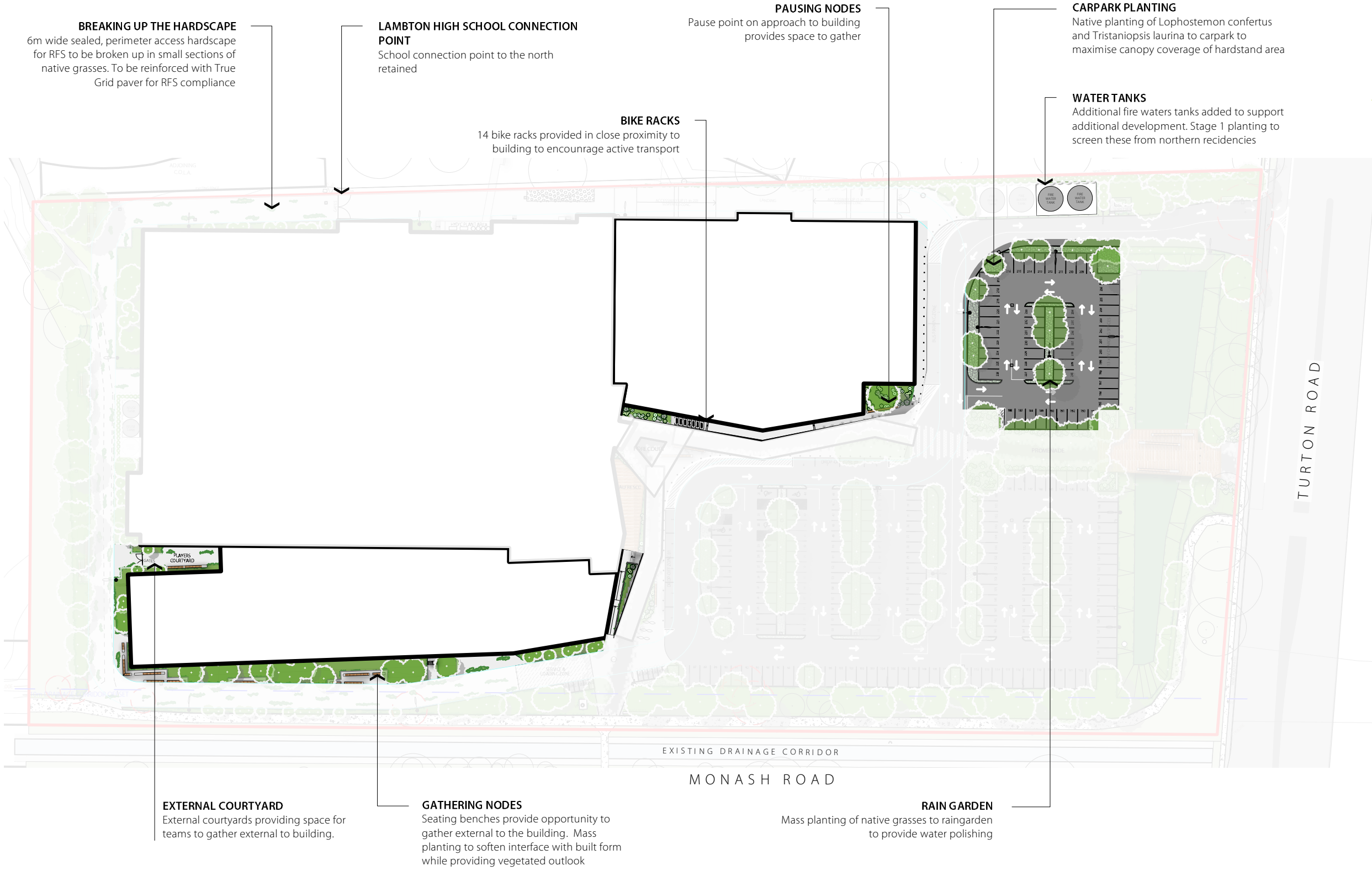
1. Bridge suspended over planted swale provides entry threshold. Seating to create gathering space with information conveyed relating to the native species used within the swale and the former site.
2. Swale planted with appropriate native species to filter pollutants and create habitat.
3. Random planting of Melaleuca quinquenervia to swale edges to recreate planting scheme native to site.
4. Paving to pick up on the idea of movement through the wetlands of people and fauna with mass planting feathering in at edges, breaking down the interface of built and natural landscape.
5. Canopy planting within bioswales to provide shade to carpark.
6. Opportunity for entry signage 'Welcome to Awabakal Country'.
7. Feature entry signage.
8. Corymbia variegata provide shade to entry journey.



14683.5 SK L206_N HUNTER INDOOR SPORTS CENTRE (HISC)_THE BASKETBALL ASSOCIATION OF NEWCASTLE LIMITED

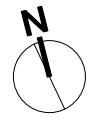


LANDSCAPE MASTERPLAN - STAGE 2

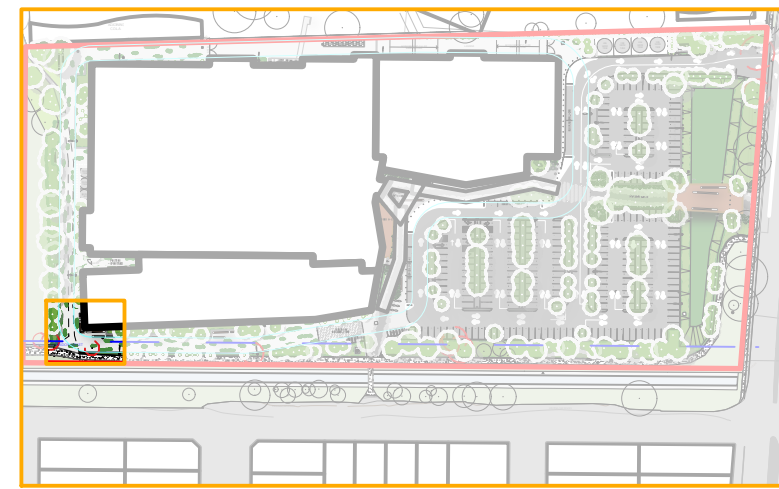
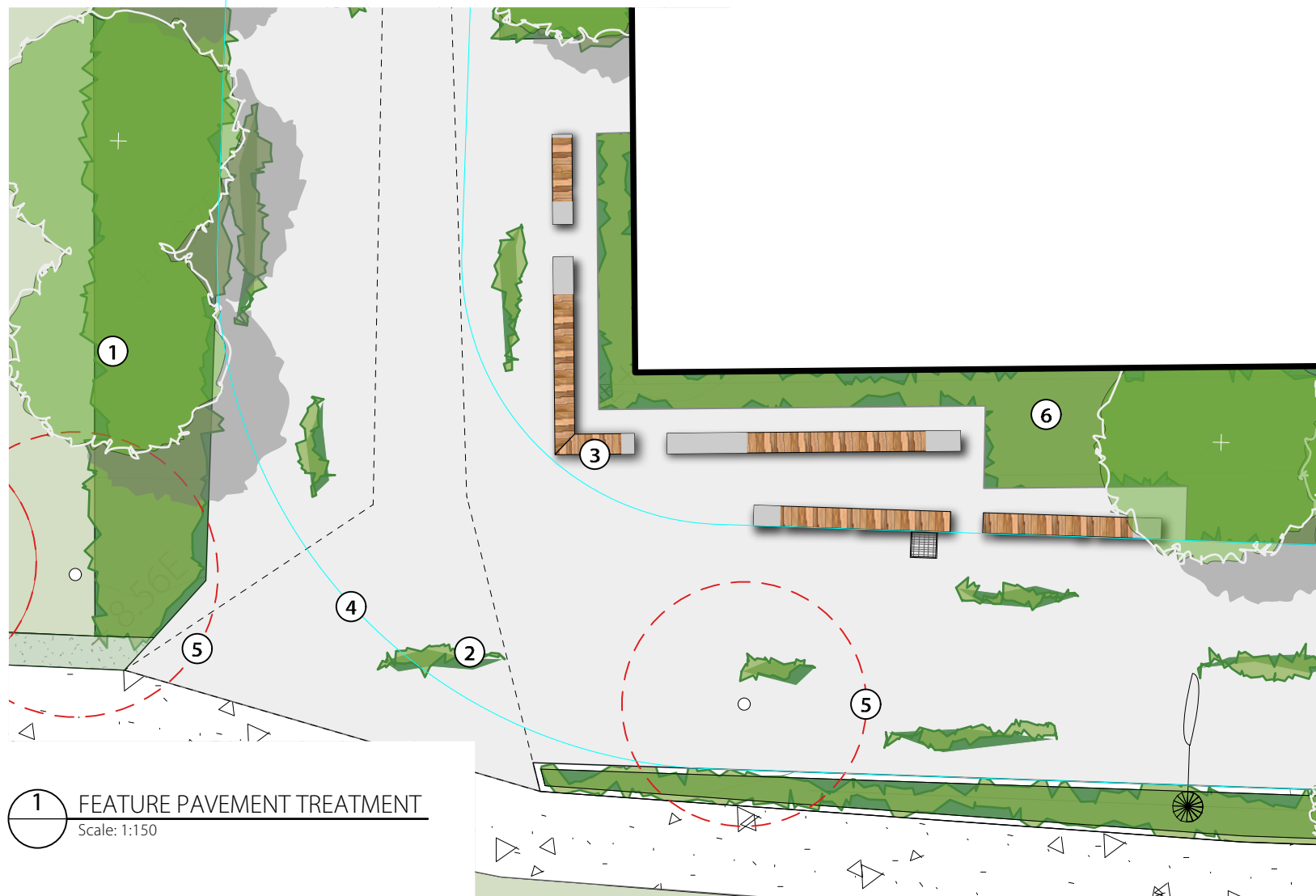


LEGEND

- SITE BOUNDARY
- RURAL FIRE SERVICE: LARGE ISOLATED BUILDING 6M WIDE SEALED SURFACE PATH
- EXISTING TREES TO BE RETAINED
- EXISTING TREES TO BE REMOVED
- NOTE: SOLID TREE OUTLINE SHOWN TO SOUTH-WEST ERN CORNER TREE HAS NOT BEEN NOT SURVEYED INDICATIVE OUTLINE SHOWN FROM SATELLITE IMAGERY
- PROPOSED TREE PLANTINGS AS SPECIFIED
- SCREENING/HEDGE PLANTING
- FEATURE PLANTING
- MEDIUM SHRUBS AND PLANTS
- LARGE SWALE PLANTING
- RAINGARDEN PLANTING
- EXISTING TURF AREAS
- PREMIUM TURF AREAS
- PERMEABLE PAVING
- EXISTING CONCRETE
- NEW CONCRETE
- TEMPORARY GRAVEL
- FEATURE PAVING 01
- FEATURE PAVING 02
- FEATURE DECKING
- FEATURE TIMBER SEAT



SIDE & REAR PAVEMENT & SEATING DETAIL



LEGEND

- SITE BOUNDARY
- RURAL FIRE SERVICE: LARGE ISOLATED BUILDING 6M WIDE SEALED SURFACE PATH
- EXISTING TREES TO BE RETAINED
- EXISTING TREES TO BE REMOVED
NOTE: SOLID TREE OUTLINE SHOWN TO SOUTH-WEST ERN CORNER TREE HAS NOT BEEN NOT SURVEYED INDICATIVE OUTLINE SHOWN FROM SATELLITE IMAGERY
- PROPOSED TREE PLANTINGS AS SPECIFIED
- SCREENING/HEDGE PLANTING
- FEATURE PLANTING
- MEDIUM SHRUBS AND PLANTS
- LARGE SWALE PLANTING
- RAINGARDEN PLANTING
- EXISTING TURF AREAS
- PREMIUM TURF AREAS
- PERMEABLE PAVING
- EXISTING CONCRETE
- NEW CONCRETE
- TEMPORARY GRAVEL
- FEATURE PAVING 01
- FEATURE PAVING 02
- FEATURE DECKING
- FEATURE TIMBER SEAT

NOTES

1. Canopy planting of native canopy trees with underplanting to create sense of space, seclusion and privacy while screening the built form.
2. Breaking up the concrete access path in dynamic sections of planted True Grid pavers to reinforce movement and flow through hardscape while also giving the impression of the built form giving way to the original landscape.
3. Timber benches to provide viewing locations inward to basketball stadium and informal gathering outdoor spaces for teams and the public. Opportunity for signage or Connection with Country placemaking to select benches.
4. 6m wide RFS sealed, access path for fire access.
5. Existing tree to be removed.
6. Low mass planting to building interface provides a sense of relief from internal spaces.

1 FEATURE PAVEMENT TREATMENT
Scale: 1:150



2 Pavement giving way to native.

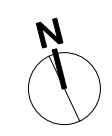


3 Use of language on furniture elements.

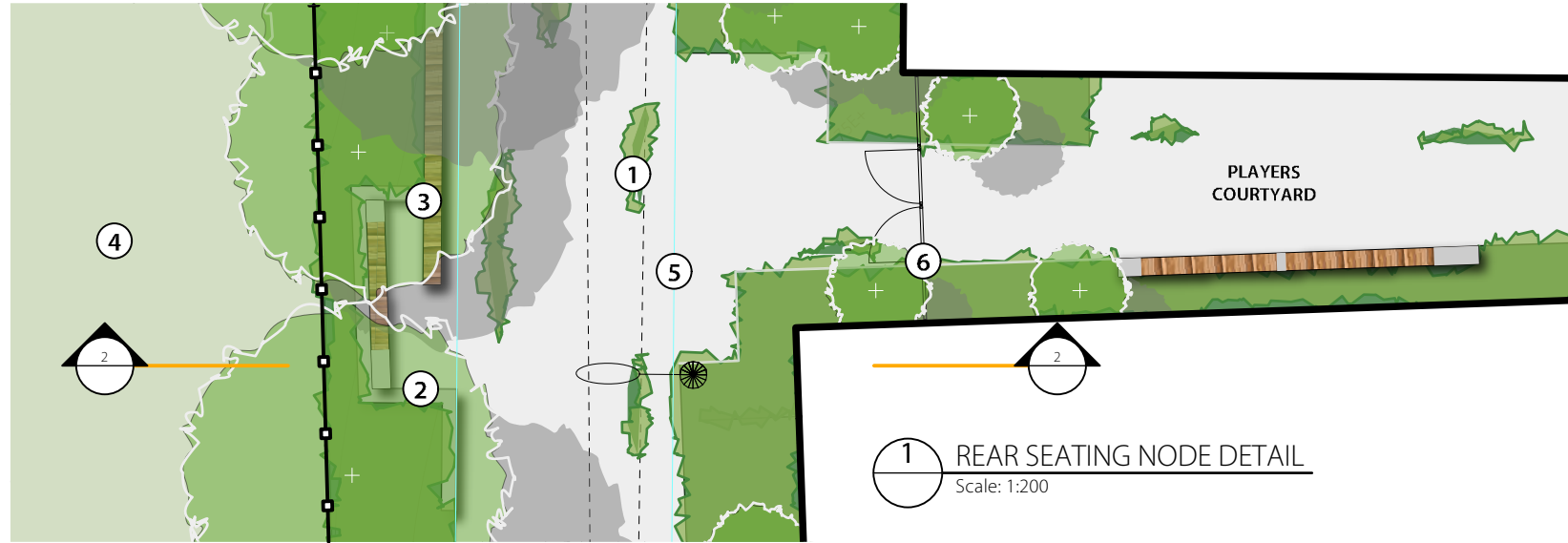


3 Concrete + timber bench seats.

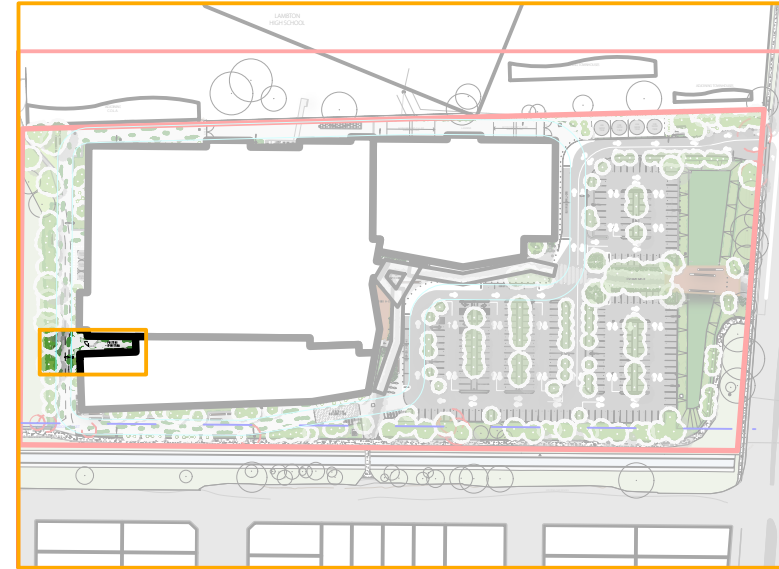
14683.5 SK L211_N HUNTER INDOOR SPORTS CENTRE (HISC)_THE BASKETBALL ASSOCIATION OF NEWCASTLE LIMITED



WESTERN SEATING NODE



1 REAR SEATING NODE DETAIL
Scale: 1:200



LEGEND

- SITE BOUNDARY
- RURAL FIRE SERVICE: LARGE ISOLATED BUILDING 6M WIDE SEALED SURFACE PATH
- EXISTING TREES TO BE RETAINED
- EXISTING TREES TO BE REMOVED
NOTE: SOLID TREE OUTLINE SHOWN TO SOUTH-WESTERN CORNER TREE HAS NOT BEEN SURVEYED INDICATIVE OUTLINE SHOWN FROM SATELLITE IMAGERY
- PROPOSED TREE PLANTINGS AS SPECIFIED
- SCREENING/HEDGE PLANTING
- FEATURE PLANTING
- MEDIUM SHRUBS AND PLANTS
- LARGE SWALE PLANTING
- RAINGARDEN PLANTING
- EXISTING TURF AREAS
- PREMIUM TURF AREAS
- PERMEABLE PAVING
- EXISTING CONCRETE
- NEW CONCRETE
- TEMPORARY GRAVEL
- FEATURE PAVING 01
- FEATURE PAVING 02
- FEATURE DECKING
- FEATURE TIMBER SEAT
- EXISTING FENCE TO REMAIN

NOTES

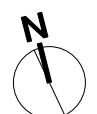
1. Breaking up the concrete access path in dynamic sections of planted True Grid pavers to reinforce movement and flow through hardscape.
2. Concrete retaining wall to provide level seating node off path edge, with mass planting of native tree species behind. Sunken seating nodes to pay homage to the Dummy Gun Emplacements of WWII previously located on site.
3. Continuation of timber longitudinal bench seats for informal outdoor gatherings and for teams to escape outdoors external to the building.
4. Existing field and fencing to be retained.
5. 6m wide RFS sealed, access path for fire access.
6. Gated entry to rear courts.



2 SEATING NODE SECTION
Scale: 1:100



14683.5 SK L220_N HUNTER INDOOR SPORTS CENTRE (HISC)_THE BASKETBALL ASSOCIATION OF NEWCASTLE LIMITED



LANDSCAPE MASTERPLAN - ALL STAGES



LEGEND

- SITE BOUNDARY
- RURAL FIRE SERVICE: LARGE ISOLATED BUILDING 6M WIDE SEALED SURFACE PATH
- EXISTING TREES TO BE RETAINED
- EXISTING TREES TO BE REMOVED
- NOTE: SOLID TREE OUTLINE SHOWN TO SOUTH-WEST ERN CORNER TREE HAS NOT BEEN NOT SURVEYED INDICATIVE OUTLINE SHOWN FROM SATELLITE IMAGERY
- PROPOSED TREE PLANTINGS AS SPECIFIED
- SCREENING/HEDGE PLANTING
- FEATURE PLANTING
- MEDIUM SHRUBS AND PLANTS
- LARGE SWALE PLANTING
- RAINGARDEN PLANTING
- EXISTING TURF AREAS
- PREMIUM TURF AREAS
- PERMEABLE PAVING
- EXISTING CONCRETE
- NEW CONCRETE
- TEMPORARY GRAVEL
- FEATURE PAVING 01
- FEATURE PAVING 02
- FEATURE DECKING
- FEATURE TIMBER SEAT



PRINCIPLES



14683.5 SK L300_N HUNTER INDOOR SPORTS CENTRE (HISC)_THE BASKETBALL ASSOCIATION OF NEWCASTLE LIMITED



412 KING STREET NEWCASTLE NSW AUSTRALIA 2300
TERRAS.COM.AU PH: 49 294 926

DESIGNING WITH COUNTRY



GREEN CONCRETE - GATHERING
Use of green concrete to blade seating to promote reuse of site material and reduce environmental impact. Opportunity for incorporation of speakers into seating to create audible experiences of site, its history and relationships. Opportunity for soundscape design insertion.



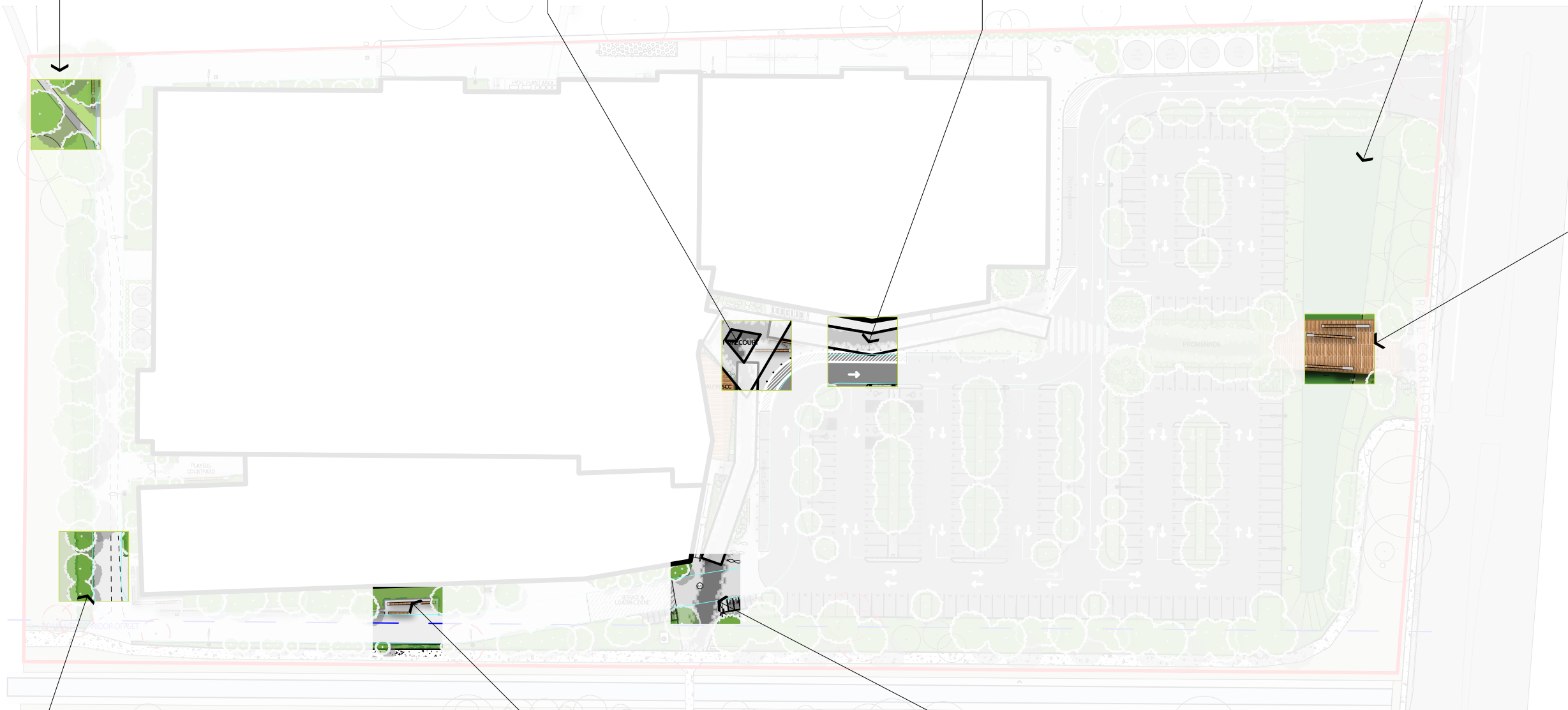
MOVEMENT
Guidance of pedestrian movements through the site replicating the modification of landforms for fishtraps and the movement of people and animals through the landscape. Proposed feature pavement patterning at specific locations



PATTERNING
Opportunity for design insertion into patterned treatment to awning and wayfinding signage.



WETLAND
Recreation of the 'wetland' within the site using native species.



Welcome to Awabakal Country

SIGNAGE
Opportunity for Welcome to Awabakal Country sign - identified in Designing with Country workshop



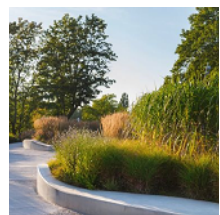
THRESHOLD
The bridge over the planted swale provides opportunity for the creation of a meeting place on approach to the building creating a pause point taking notice of the entry journey and the incorporation of the planted swale to create habitat and recreate the wetland environment

NOTES

Opportunities identified in consultation have been developed within the scheme. The creation of gathering spaces, telling the former storey of the site being a wetland and the use of native species provides an opportunity for education.

A key request was to create a space that is welcoming to First Nations people .

The bridge over the planted swale creates an opportunity to be further developed during consultation.



NATIVE SPECIES
Planting of native species to establish a sense of place and connection to Country specific to site.



GATHERING SPACES
Creation of meeting places and communal areas for gathering along share path edge. Inspiration taken from campsites along water corridor (prior to drainage corridor) and strong Awabakal relationship to water.

Aboriginal flag :
On 17th 50 people attended the official raising of the Aboriginal flag on 21st November 1971. The flag is in three colours: an upper band of red representing the Aboriginal skin, a lower band of white representing the white people who have died since the white man came to the country and a golden circle representing the sun. The Hon. the Lord Mayor, Ald. J. H. Brandy, said she hoped people would begin to all live closer with the Aboriginal people. Mr. H. Brandy said it was an historic day for the city and the Aboriginal community. He said that this will encourage the rest of the city.

WELCOMING SITE - FLAG
Opportunity to fly the Aboriginal (and others) as a symbol of welcome.



TREE CANOPY



LEGEND

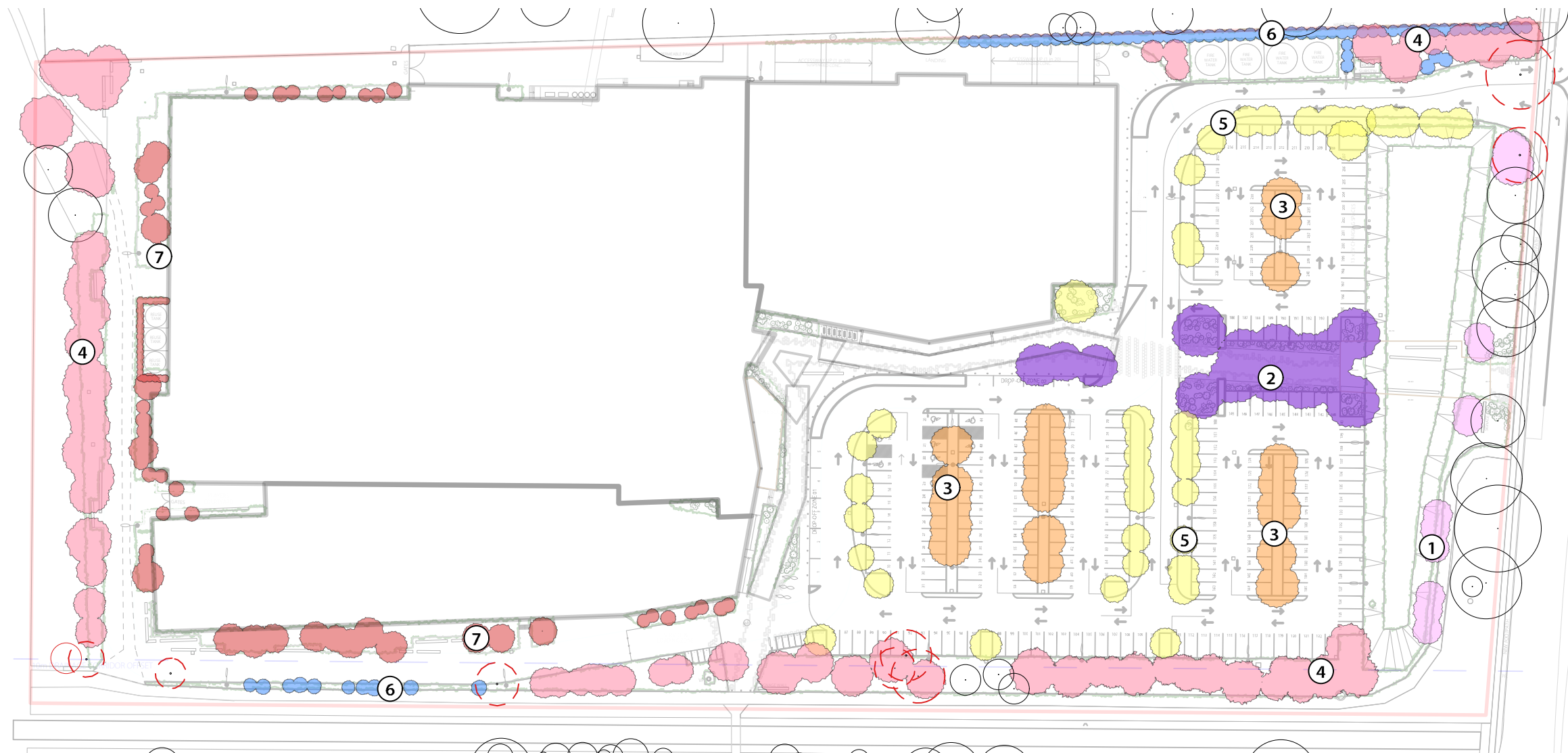
- SITE BOUNDARY
- EXISTING TREES TO BE RETAINED
- EXISTING TREES TO BE REMOVED
NOTE: SOLID TREE OUTLINE SHOWN TO SOUTH-WESTERN CORNER TREE HAS NOT BEEN SURVEYED, INDICATIVE OUTLINE SHOWN FROM SATELLITE IMAGERY
- PROPOSED TREE PLANTINGS STAGE 1
- STAGE 1 (CARPARK COVERAGE)
- PROPOSED TREE PLANTINGS STAGE 2
- STAGE 2 (CARPARK COVERAGE)
- CARPARK AREA - STAGE 1
- CARPARK AREA - STAGE 2

NOTES

Total Site Area	37 724m ²
Site Area (excl. impervious roofs)	22 067m ²
Tree Canopy to be removed	430m ²
Tree Canopy to be retained	888m ²
Existing Tree Canopy Area	1 318m ²
Proposed Tree Canopy Area:	
All Stages (incl. retained trees)	6 451m ²
Stage 1	4 617m ²
Stage 2	946m ²
Existing Tree Canopy Coverage (Using Total Site Area)	3.49%
Proposed Tree Canopy Coverage (incl. retained trees):	
Total Site Area	17.10%
Site Area (excl. roofs)	29.23%
Stage 1 Carpark Area	2 304m ²
Stage 1 Shade Area	665m ²
S1 Carpark Canopy Coverage	28.86%
Stage 2 Carpark Area	682m ²
Stage 2 Shade Area	118m ²
S2 Carpark Canopy Coverage	17.30%



PLANTING ORGANISATIONAL PLAN



LEGEND

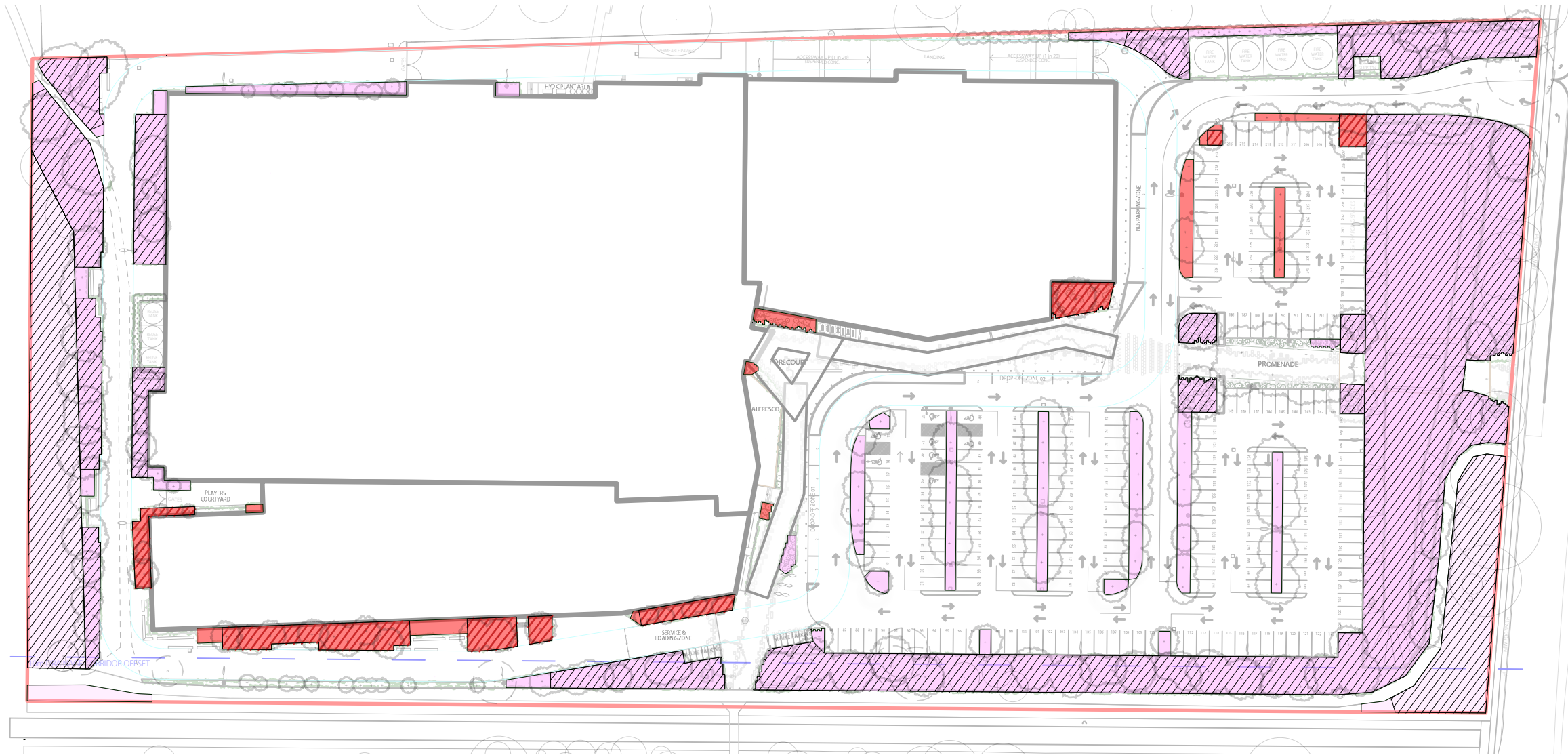
- SITE BOUNDARY
- EXISTING TREES TO BE RETAINED
- EXISTING TREES TO BE REMOVED
NOTE: SOLID TREE OUTLINE SHOWN TO SOUTH-WESTERN CORNER TREE HAS NOT BEEN NOT SURVEYED INDICATIVE OUTLINE SHOWN FROM SATELLITE IMAGERY
- SWALE TREES
Melaleuca quinquenervia
- BOUNDARY SCREENING LARGE TREE MIX
- CARPARK SHADE TREES
- CARPARK RAIN GARDEN TREES
- SMALL SCREENING TREES
- FEATURE ENTRANCEWAY TREES
Corymbia variegata (n)
- SMALL TREES

NOTES







1. *Melaleuca* sp. along planted swale
2. Feature *Corymbia variegata* to frame entrance path.
3. Large *Lophostemon* sp. to shade car park.
4. Large boundary tree mix of *Melaleuca* and *Eucalyptus* tree species to screen development.
5. *Brachychiton* and *Tristaniopsis* tree mix to rain gardens.
6. *Backhousia* and gums as smaller screening trees.
7. Ornamental tree planting around building. *Brachychiton*, *Tristaniopsis* and *Callistemon* sp.



LANDSCAPE CALCULATIONS



LEGEND

-  SITE BOUNDARY
-  EXISTING LANDSCAPE AREA TO BE RETAINED
-  STAGE 1 LANDSCAPE AREA
-  STAGE 1 DEEP SOIL
-  STAGE 2 LANDSCAPE AREA
-  STAGE 2 DEEP SOIL

NOTES

Total Site Area	37 724m ²
Site Area (excl. impervious roofs)	22 067m ²
Deep Soil Area	6 909m ²
Stage 1	6 451m ²
Stage 2	458m ²
(min 3m wide as per CoN DCP 2012)	
Landscape Area	8 008m ²
Stage 1	7 306m ²
Stage 2	702m ²
(min 1.5m wide as per CoN DCP 2012)	
Deep Soil Percentage (as required by CoN DCP 2012)	15%
	Achieved
Total Site Area	18.31%
Site Area (excl. roofs)	31.31%
Landscape Area Percentage (as required by CoN DCP 2012)	30%
	Achieved
Total Site Area	21.23%
Site Area (excl. roofs)	36.29%

Note: Calculations for landscape area have disregarded retaining walls in minimum width requirement



WSUD & HYDROLOGY

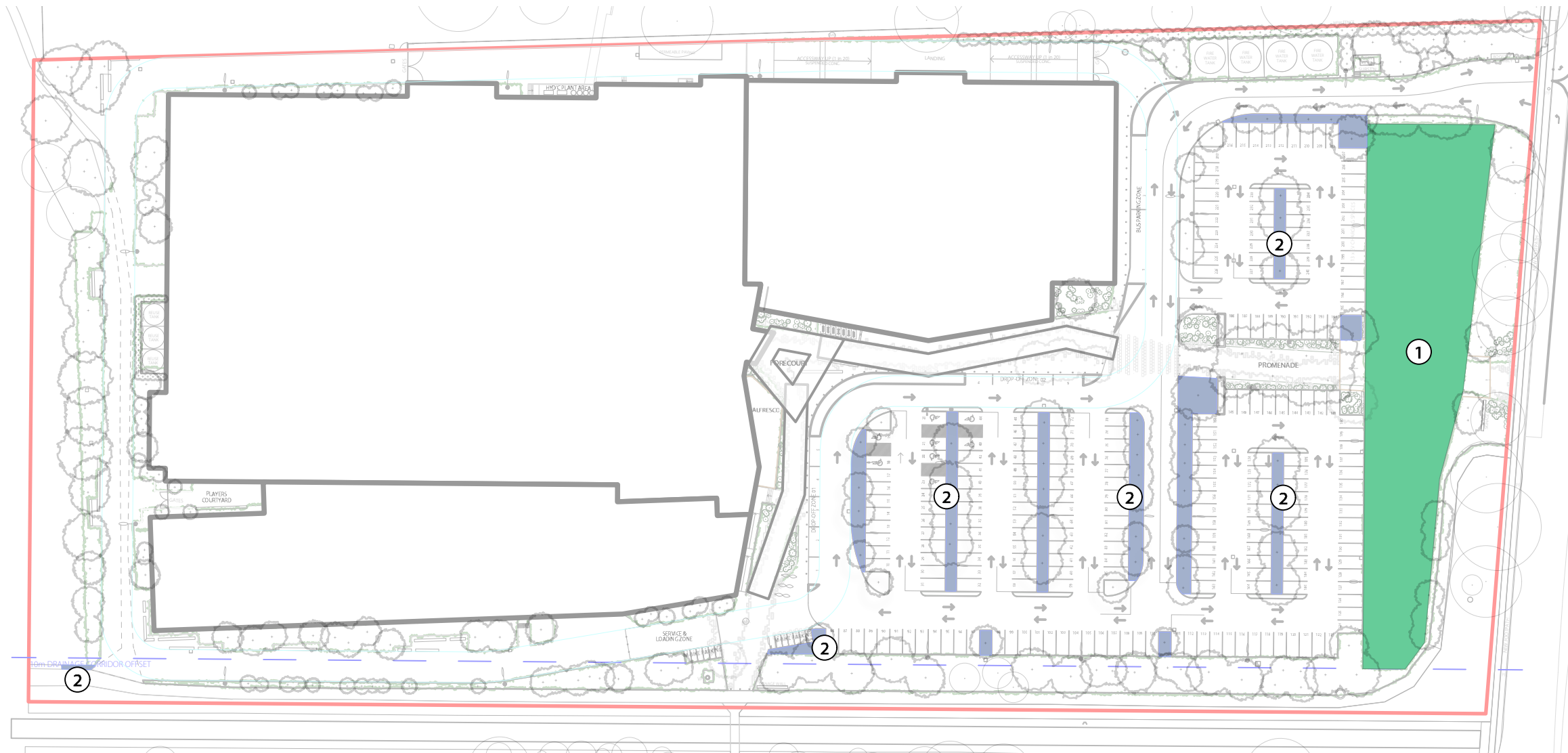


LEGEND

- SITE BOUNDARY
- LARGE PLANTED SWALE
- RAINGARDENS







NOTES

1. Swale mass-planted with native grasses to provide water polishing and slow the flow of water from leaving the site.
2. Raingarden within car park and surrounds, mass-planted to provide water polishing.



CIRCULATION

LEGEND

-  SITE BOUNDARY
-  EXISTING SHARE PATH NETWORK
-  EXISTING FOOTPATH
-  NEW FOOTPATH
-  PROPOSED ROAD & CARPARK
-  RURAL FIRE SERVICE: LARGE ISOLATED BUILDING 6M WIDE SEALED SURFACE PATH

NOTES

1. Existing footpath to be retained and widened to enhance accessibility.
2. New footpath into/through site.
3. Existing sharepath network to be retained.



TURTON ROAD



03 PRINCIPLES

SIGNAGE

LEGEND

-  SITE BOUNDARY
-  OPPORTUNITIES FOR SIGNAGE

NOTES

1. Newcastle indoor centre signage.
2. Information panel to provide educational signage bringing awareness to the benefits and needs of swale.
3. Potential welcome to Awabakal country blade signage.
4. Awabakal language incorporated into seat.

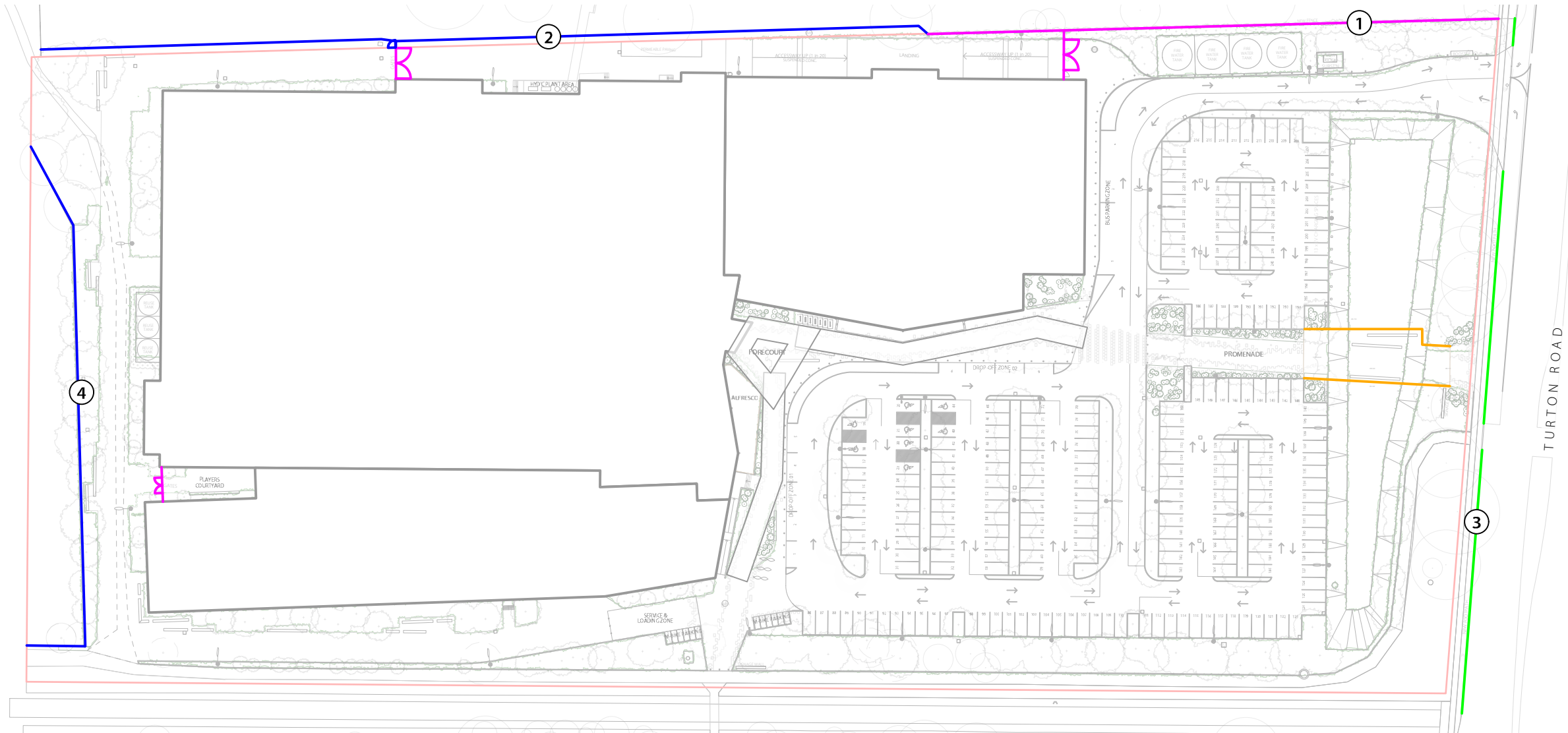
NOTES

- Signage opportunities to be further explored alongside further Connection with Country consultation.

Potential for local indigenous language to be incorporated into signage, to be further explored through additional consultation and design development.



FENCING & BARRIERS



LEGEND

- SITE BOUNDARY
- EXISTING FENCING & GATES TO BE RETAINED
- 2100H BLACK PALISADE FENCE TO TOWNHOUSE INTERFACE, TO MATCH EXISTING SCHOOL FENCE
- 1400H ROAD PEDESTRIAN BARRIER FENCING TO BE TRANSPORT FOR NSW COMPLIANT
- COMPLIANT BRIDGE RAILINGS DESIGN TO BE FURTHER DEVELOPED THROUGH CONNECTION WITH COUNTRY CONSULTATION






NOTES

1. New 2100mm palisade fence as extension of school fence.
2. Existing school fence retained.
3. New pedestrian barrier.
4. Existing sports field fence to be retained.



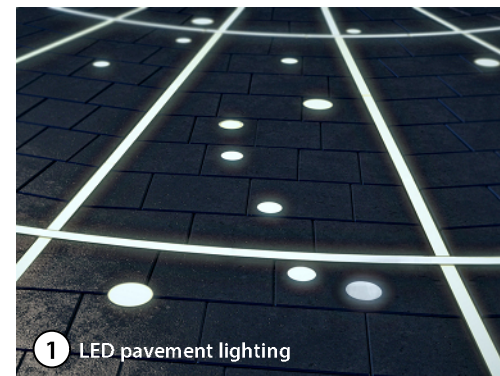
LANDSCAPE LIGHTING

LEGEND

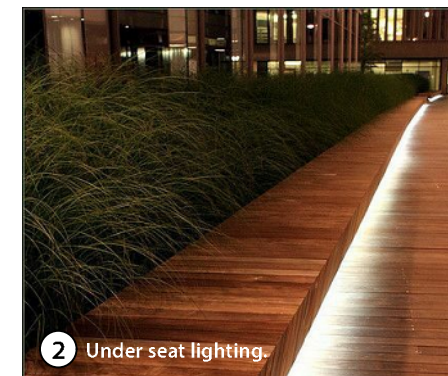
-  SITE BOUNDARY
-  STRIP LIGHTS TO SEATING AND SELECT STAIRS
-  OPPORTUNITY FOR LIGHTING TO BRIDGE RAILINGS DESIGN TO BE FURTHER DEVELOPED THROUGH CONNECTION WITH COUNTRY CONSULTATION
-  LED LIGHTING WITHIN PAVEMENT
-  WASH LIGHTING TO SIGNAGE

NOTES

1. LED lighting in pavement, potential reflection of constellations to provide connection with Country.
2. Wash lighting to entry signage.
3. Strip lighting to bridge balustrade.
4. Strip lighting select seating and stair locations throughout the site. Strip lighting to frame bench seats.



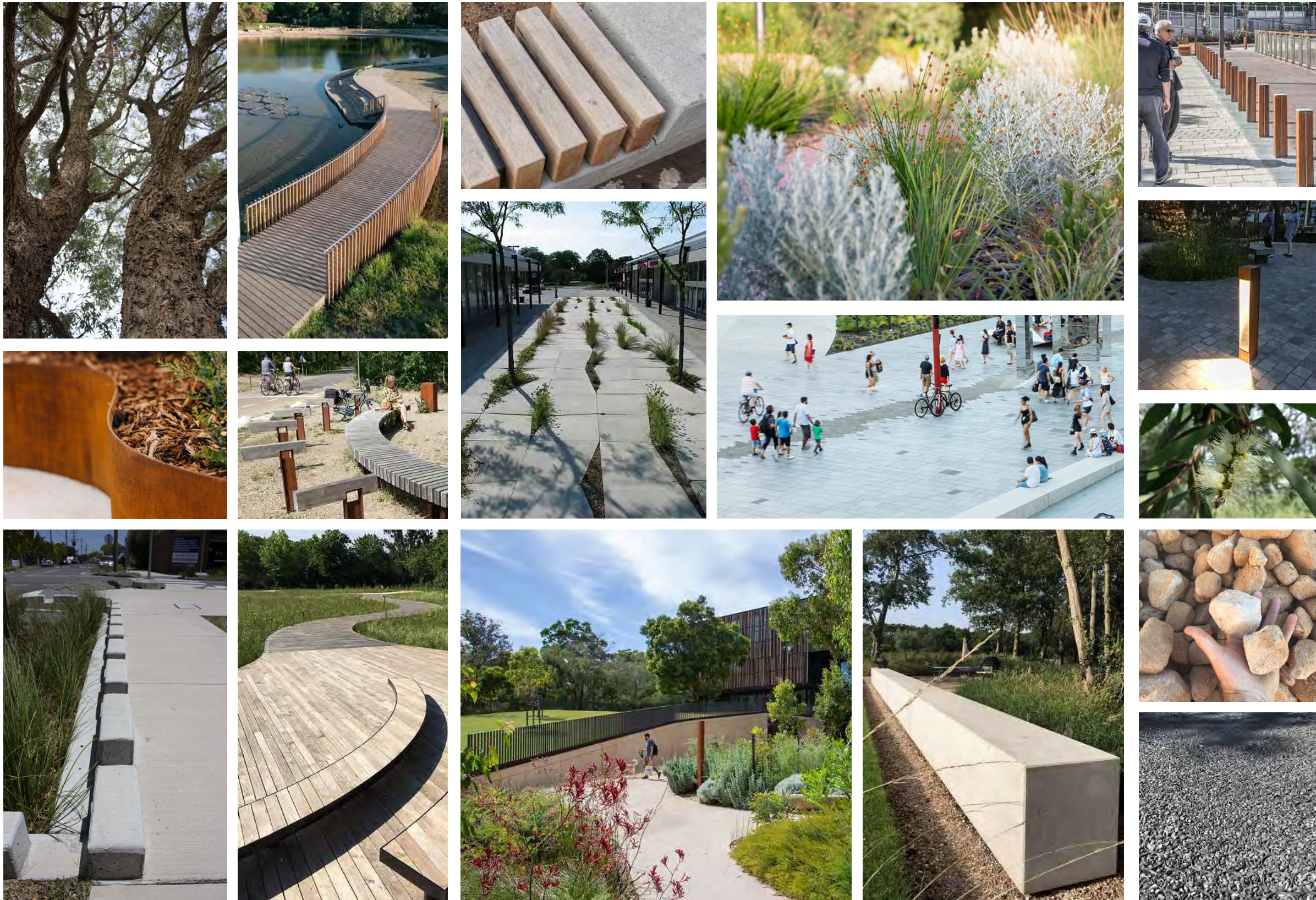
1 LED pavement lighting



2 Under seat lighting.



MATERIALS PALETTE



NOTES

The proposed material palette is inspired by the history and heritage of the site such as coal, sandstone and timber.

Potential for sandstone to be used throughout the site with the introduction of corten—a subtle reference to the previous Newcastle Steelworks history.

Green concrete blade seating walls to reduce environmental impact.

Paved pedestrian surfaces to create visual interest in hardstand areas to create movement and flow of people through the landscape. Dark pavers to make reference to the coal history of the area.

Use of native plant species to create a sense of place unique to the site and highlight the site's previous existence as a swamp ecosystem.

Swathes of native grasses proposed to reinforce movement and the site's relationship to water and movement of people and fauna.

PLANT PALETTE

TREES



Lophostemon confertus



Melaleuca quinquenervia



Callistemon salignus



Banksia integrifolia 'Sentinel'



Eucalyptus paniculata



Corymbia variegata

SHRUBS



Indigenous Use: Culturally significant, great source of water, leaves used for weaving/string, edible flower, long stork used for fishing spears (buoyant) (Artefact)

Doryanthes excelsa



Indigenous Use: Some species' nectar used for flavouring water (Artefact)

Grevillea sericea



Lomandra confertifolia



Anigozanthos flavidus



Poa labillardieri



Persoonia linearis

GROUNDCOVERS



Chrysocephalum apiculatum



Prostanthera sp



Rhagodia spinescens



Hardenbergia violacea



Myoporum parvifolium



Dichondra repens

RAINGARDENS & SWALES



Poa labillardieri



Lomandra confertifolia



Lomandra filiformis



Juncus usitatus



Themeda australis



Carex appressa

PLANT SCHEDULE

PLANT SCHEDULE - TREES

ID	Botanical Name	Common Name	Scheduled Size	Pot Size
BaCi	Backhousia citriodora	Lemon Scented Myrtle	8.0 x 3.0	100L
BiSe	Banksia integrifolia 'Sentinel'	Coastal Banksia 'Sentinel'	5.0 x 4.5	45L
CaSa	Callistemon salignus	Willow Bottlebrush	10.0 x 5.0	100L
CoVa	Corymbia variegata	Spotted Gum	25.0 x 10.0	100L
EuPa	Eucalyptus paniculata	Grey Ironbark	30 x 8.0	100L
EuRo	Eucalyptus robusta	Swamp Mahogany, Bengaly	30 x 8.0	100L
LoCo	Lophostemon confertus	Brush Box	12.0 x 8.0	100L
MeQu	Melaleuca quinquenervia	Broad-leaved Paperbark	15.0 x 10.0	100L
TrLa	Tristaniopsis laurina	Water Gum	10.0 x 5.0	100L

PLANT SCHEDULE - GENERAL

ID	Botanical Name	Common Name	Scheduled Size	Pot Size
AcHe	Actinotus helianthi	Flannel Flower	2.5 x 2.0	150mm
AcUl	Acacia ulicifolia	Prickly Moses	1.5 x 1.0	150mm
AnFl	Anigozanthos flavidus	Evergreen Kangaroo Paw	1.0 x 1.0	150mm
AuCa	Austrodanthonia caespitosa	Common Wallaby-grass	1.2 x 0.9	150mm
BoSe	Boronia serrulata	Native Rose	2.5 x 2.0	150mm
BrMu	Brachyscome multifida	Cut Leaf Daisy	0.3 x 1.2	150mm
CaAp	Carex appressa	Tall Sedge	1.0 x 1.0	150mm
CaGC	Casuarina glauca 'Cousin It'	Grey (Swamp) She-oak 'Cousin It'	1.0 x 0.2	150mm
ChAp	Chrysocephalum apiculatum	Yellow buttons	0.3 x 1.0	150mm
CoRe	Correa reflexa	Native Fuchsia	1.2 x 1.0	150mm
CuWa	Chamelaucium uncinatum 'White Alba'	Wax Flower 'White Alba'	2.5 x 2.0	150mm
DaUl	Daviesia ulicifolia	Gorse Bitter Pea	1.5 x 1.2	150mm
DcCB	Dianella caerulea 'Cassa Blue'	Paroo Lily, Blue Flax-lily, blueberry lily	1.0 x 1.0	150mm
DiRp	Dichondra repens	Kidney Weed	0.3 x 1.2	150mm
DoEx	Doryanthes excelsa	"Gynea Lily, Giant Lily"	3.0 x 1.5	300mm
FiNo	Ficinia nodosa	knobby club-rush	1.0 x 1.0	150mm
GrLi	Grevillea linearifolia	"Linear-leaf Grevillea, White Spider Flower"	2.5 x 2.0	150mm
GrSe	Grevillea sericea	Pink Spider Flower	1.5 x 1.5	150mm
HaDa	Hakea dactyloides	Finger Hakea, Broad-leaved Hakea	3.0 x 1.5m	300mm
HaVi	Hardenbergia violacea	Purple Twining-pea, False Sarsaparilla	0.3 x 1.2	150mm
LeBr	Leucophyta brownii	Cusion bush	1.0 x 1.0	150mm
LeJu	Leucopogon juniperinus	Prickly Bearded Heath	1.0 x 1.2	150mm
LePa	Leptospermum parvifolium	Small Leaf Tea Tree	2.0 x 2.0	150mm
LoCf	Lomandra confertifolia	Mat-rush	1.0 x 1.0	150mm
LoFi	Lomandra filiformis	Wattle Mat-rush, 'Savanna Blue'	1.0 x 1.0	150mm
LoLo	Lomandra longifolia	Spiny-headed Mat-Rush	1.0 x 1.0	150mm
MaCo	Macrozamia communis	Burrawang, Cycad	2.0 x 2.0	300mm
MLr	Melaleuca linariifolia 'Little Red'	Honey Myrtle	2.5 x 2.0	150mm
MyPa	Myoporum parvifolium	Carpet Spreading Myoporum	0.3 x 1.2	150mm
PeLi	Persoonia linearis	Narrow Leaved Geebung	4.0 x 3.0	300mm
PoLa	Poa labillardieri	Tussock Grass	1.0 x 1.0	150mm
PrSi	Prostanthera sieberi	Native Mint Bush	1.2x 1.2	150mm
RhSp	Rhagodia spinescens	Creeping Saltbush	0.3 x 1.2	150mm
SyAu	Syzygium australe	Brush Cherry, Scrub Cherry, creek lilly pilly, crec	3.0 x 1.0	300mm
WeFr	Westringia fruticosa 'Mundi'	Coastal Rosemary, coastal westringia	0.5 x 1.0	150mm
XaJo	Xanthorrhoea johnsonii	Johnson's Grass Tree	4.0 x 2.0	300mm

PLANT SCHEDULE - RAINGARDENS & SWALES

ID	Botanical Name	Common Name	Scheduled Size	Pot Size
AuCa	Austrodanthonia caespitosa	Common Wallaby-grass	1.0 x 0.5	Tube
CaAp	Carex appressa	Tall Sedge	1.0 x 1.0	Tube
CoRe	Correa reflexa	Native Fuchsia	1.2 x 1.0	Tube
DiCa	Dianella caerulea	Paroo Lily, Blue Flax-lily	1.0 x 1.5	Tube
DiRe	Dianella revoluta	"Spreading Flax Lily, Blueberry Lily, Blue Flax Lil	1.0 x 1.5	Tube
DiRp	Dichondra repens	Kidney Weed	0.1 x 2.0	Tube
FiNo	Ficinia nodosa	knobby club-rush	1.0 x 1.0	Tube
GaAs	Gahnia aspera	Rough Saw-sedge	1.0 x 1.0	Tube
GaCl	Gahnia clarkei	Saw Sedge	1.0 x 1.0	Tube
HiSc	Hibbertia scandens	Golden Guinea Flower, Snake Vine	0.3 x 2.0	Tube
JuUs	Juncus usitatus	Common Rush	1.0 x 1.5	Tube
LoCo	Lomandra confertifolia	Mat-rush	1.0 x 1.5	Tube
LoFi	Lomandra filiformis	Wattle Mat-rush, 'Savanna Blue'	1.0 x 1.5	Tube
LoLo	Lomandra longifolia	Spiny-headed Mat-Rush	1.0 x 1.5	Tube
PoLa	Poa labillardieri	Tussock Grass	1.0 x 1.5	Tube
ThAu	Themeda australis	Kangaroo Grass	1.0 x 1.5	Tube

= Indicative plants mentioned in Artefact 'DRAFT Connecting with Country: 15.0 Appendix B: Species List,' 30.04.2024

