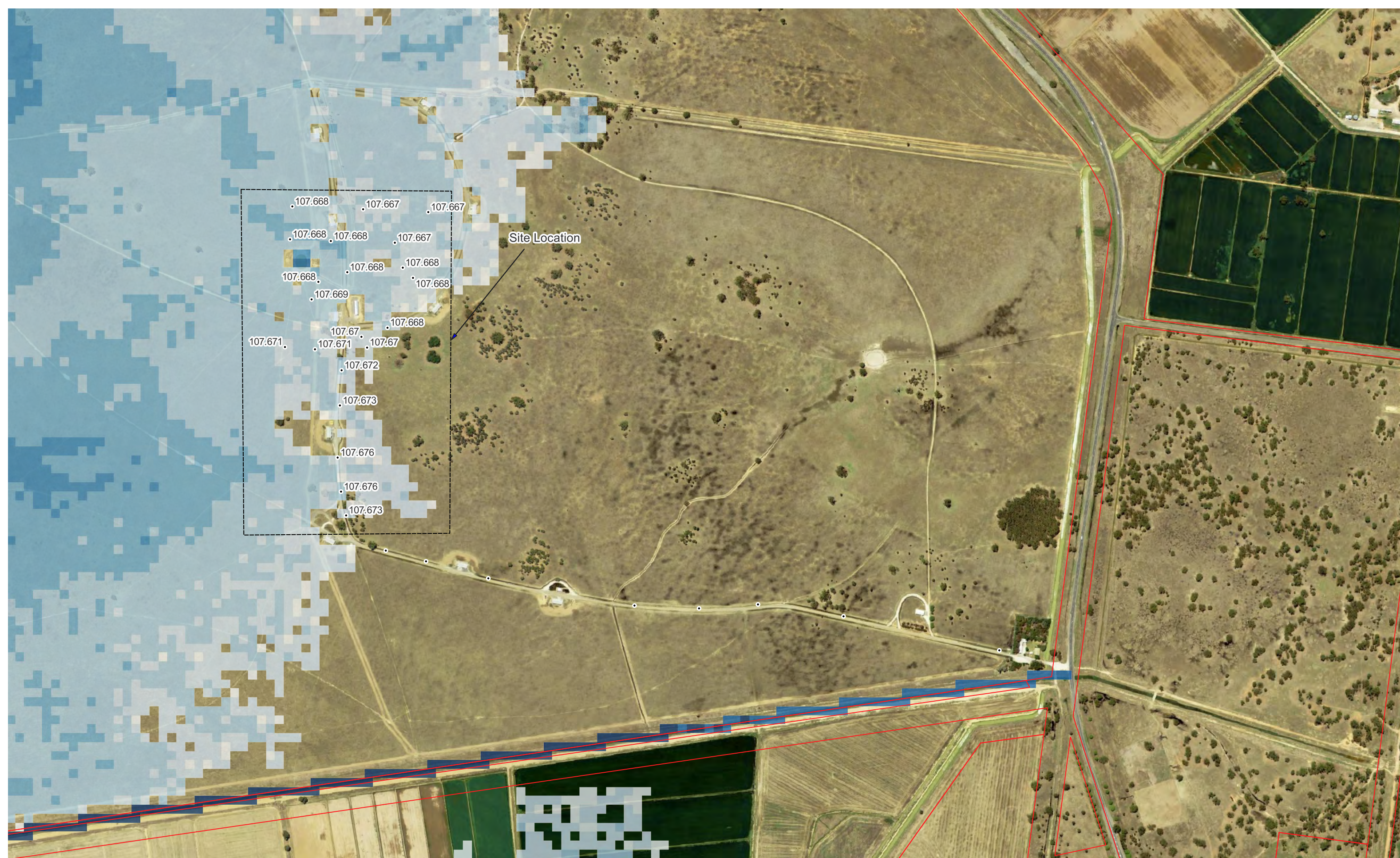


Appendix H

Flood Mapping (GHD, 2024)



Scale 7500

Paper Size A3

Map projection: Transverse Mercator
 Horizontal datum: GDA 1994
 Grid: GDA 1994 MGA Zone 55



LEGEND

- Flood Level (mAHD)
 - 0.5
- Flood Depth (m)
 - 0.015
 - 0.1
 - 0.3
 - 1
 - 2
 - >2



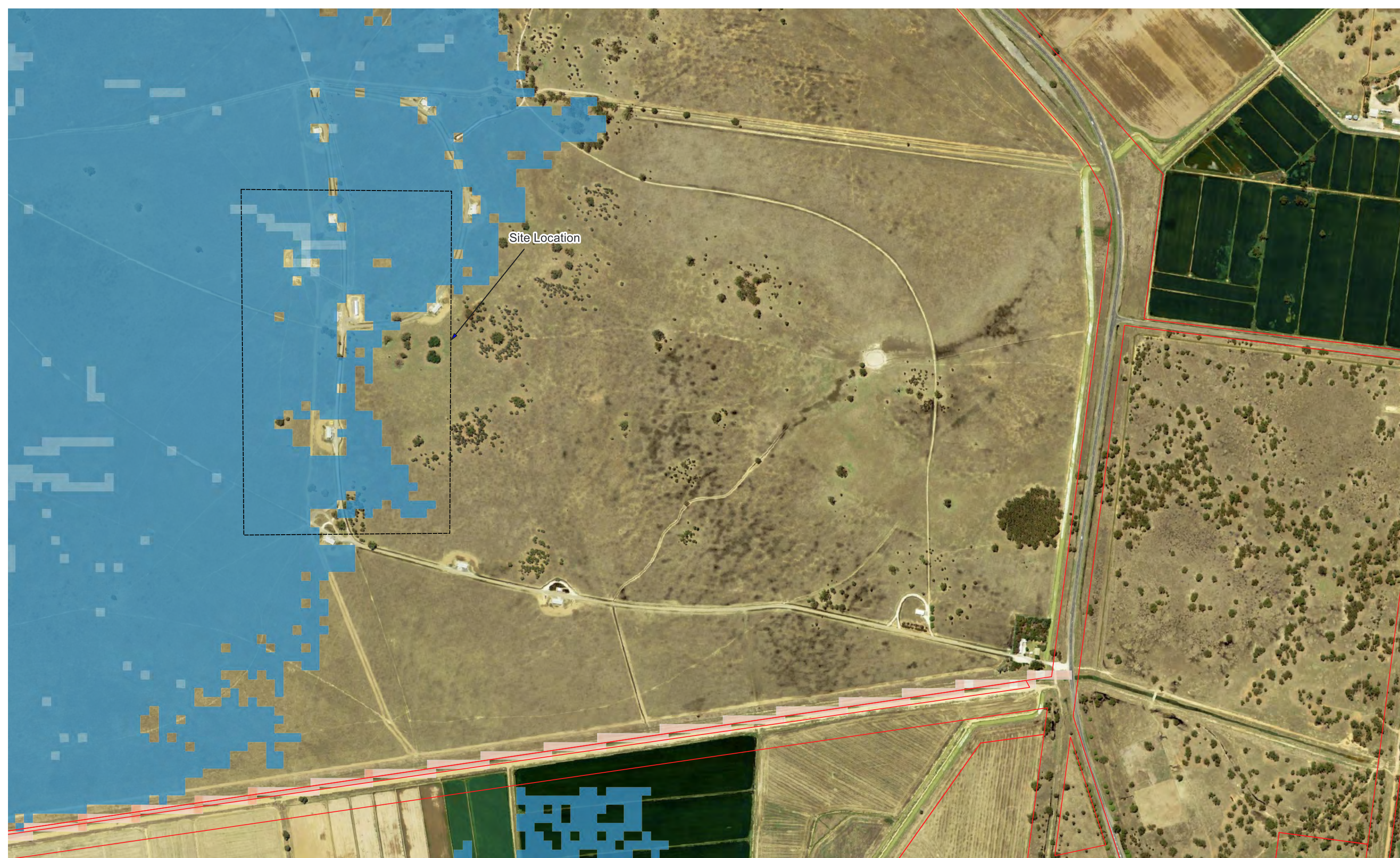
Orica Australia Pty Ltd
 Orica Tocumwal Magazine Compound Upgrade

Existing Conditions
 1% AEP Flood Depth and Level - Existing

Job Number | 12597123
 Revision |
 Date | June 2024

Figure L01

c2024. Whilst every care has been taken to prepare this map, GHD (and The Client) make no representations or warranties about its accuracy, reliability, completeness or suitability for any particular purpose and cannot accept liability and responsibility of any kind (whether in contract, tort or otherwise) for any expenses, losses, damages and/or costs (including indirect or consequential damage) which are or may be incurred by any party as a result of the map being inaccurate, incomplete or unsuitable in any way and for any reason.
 Data Source: NSW LPI:DTDB & DCDB, 2012, GHD Flood Mapping (2024) Created by RRB



Scale 7500

Paper Size A3

Map projection: Transverse Mercator
 Horizontal datum: GDA 1994
 Grid: GDA 1994 MGA Zone 55



LEGEND

Peak Velocity (m/s)	<math>< 0.1</math>	0.5-1.0
	0.1-0.2	1.0-2.0
	0.2-0.3	2.0-3.0
	0.3-0.4	3.0-5.0
	0.4-0.5	>5.0

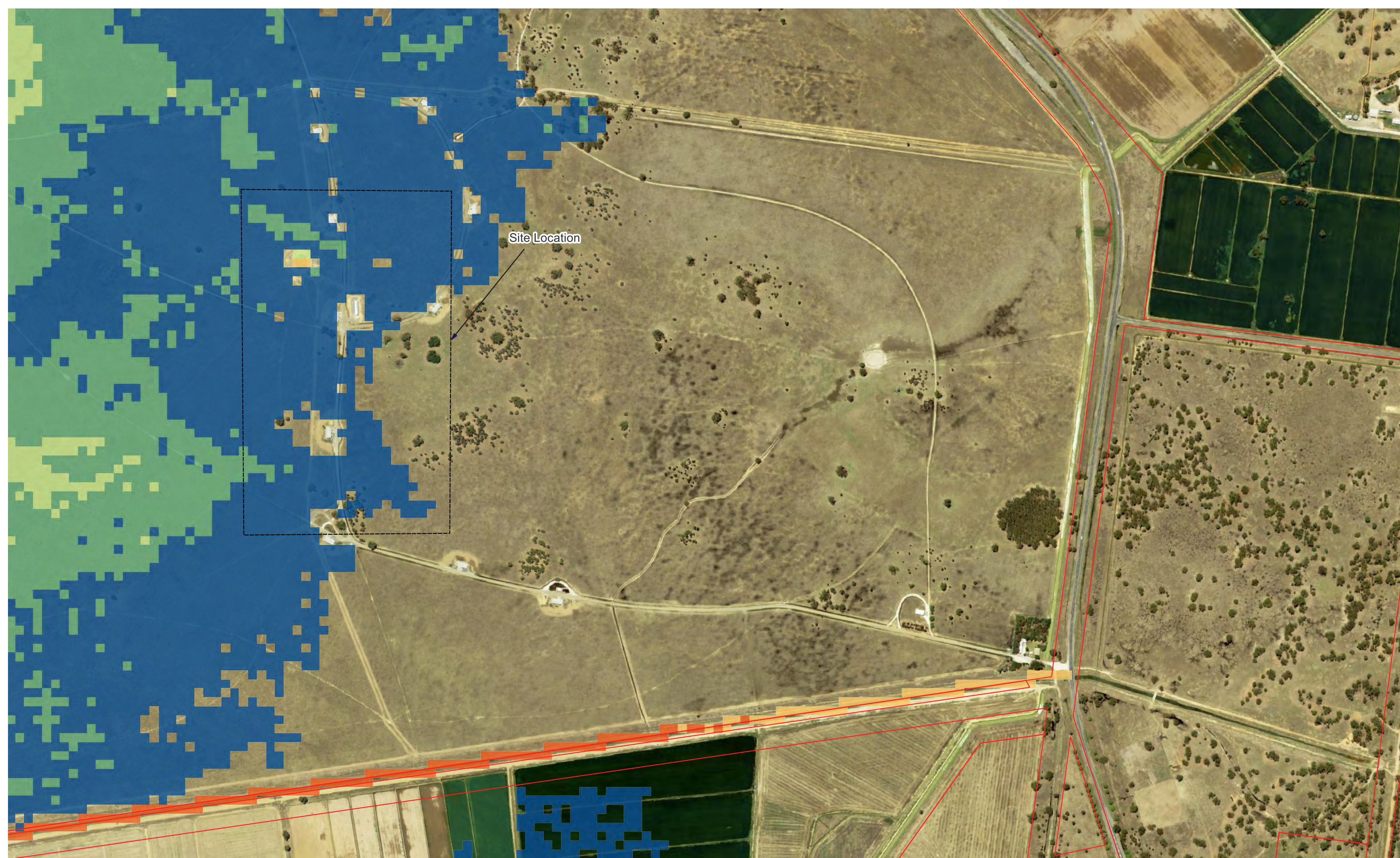


Orica Australia Pty Ltd
 Orica Tocumwal Magazine Compound Upgrade

Existing Conditions
 1% AEP Peak Velocity - Existing

Job Number | 12597123
 Revision |
 Date | June 2024

Figure L02



Scale 7500

Paper Size A3



Map projection: Transverse Mercator
Horizontal datum: GDA 1994
Grid: GDA 1994 MGA Zone 55

LEGEND
Flood Hazard

- H1 - Relatively benign flow conditions. No vulnerability constraints.
- H2 - Unsafe for small vehicles.
- H3 - Unsafe for all vehicles, children and the elderly.
- H4 - Unsafe for all people and all vehicles.
- H5 - Unsafe for all people and all vehicles. Buildings require special engineering design and construction.
- H6 - Unconditionally dangerous. Not suitable for any type of development or evacuation access. All building types considered vulnerable to failure.



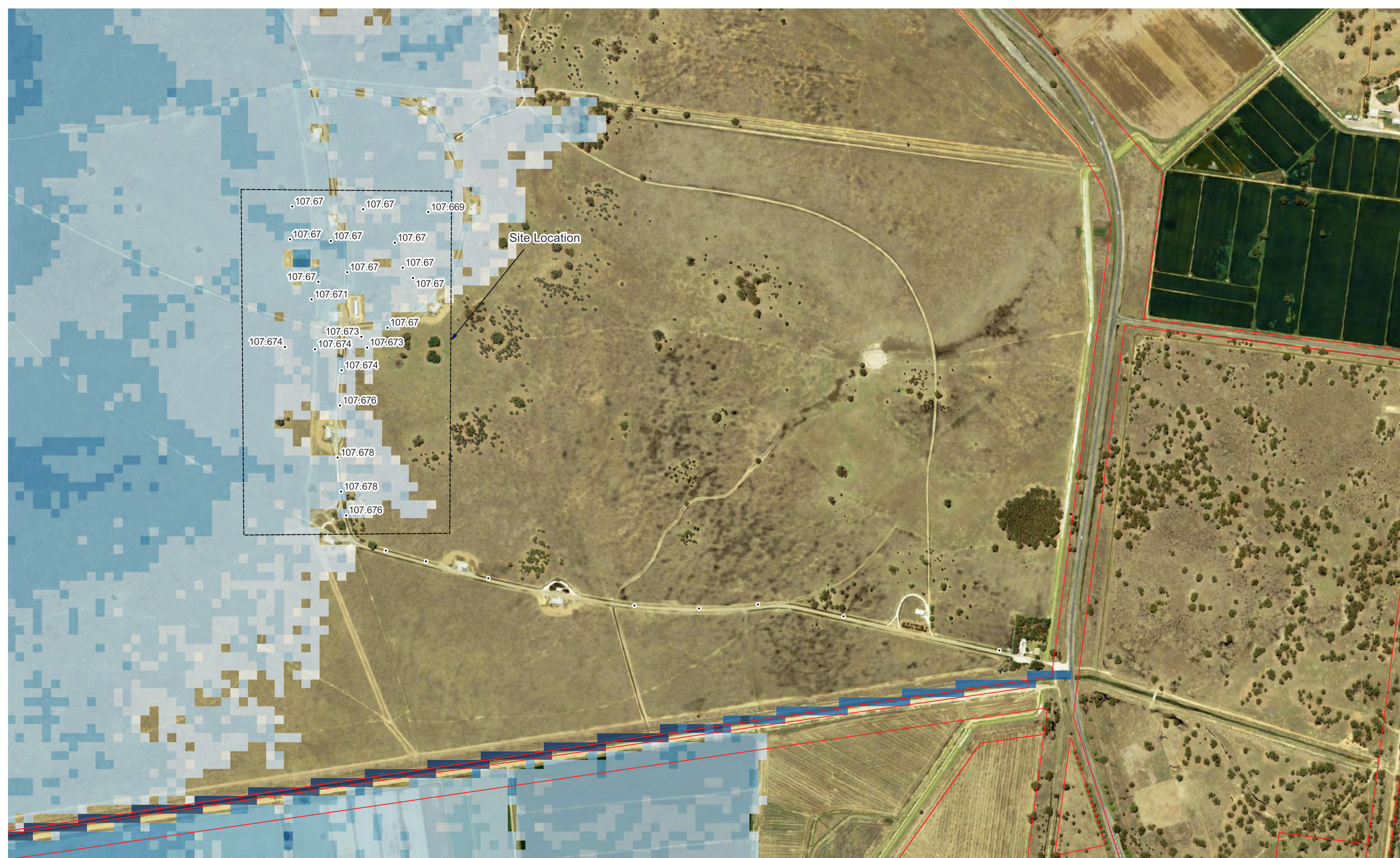
Orica Australia Pty Ltd
Orica Tocumwal Magazine Compound Upgrade

Existing Conditions
1% AEP Flood Hazard - Existing

Job Number	12597123
Revision	
Date	June 2024

Figure L03

c2024. Whilst every care has been taken to prepare this map, GHD (and The Client) make no representations or warranties about its accuracy, reliability, completeness or suitability for any particular purpose and cannot accept liability and responsibility of any kind (whether in contract, tort or otherwise) for any expenses, losses, damages and/or costs (including indirect or consequential damage) which are or may be incurred by any party as a result of the map being inaccurate, incomplete or unsuitable in any way and for any reason.
Data Source: NSW LPI:DTDB & DCDB, 2012, GHD Flood Mapping (2024) Created by RRB



Scale 7500

Paper Size A3

Map projection: Transverse Mercator
Horizontal datum: GDA 1994
Grid: GDA 1994 MGA Zone 55



LEGEND

- Flood Level (mAHD)
 - 0.5
 - 1
 - 2
 - >2
- Flood Depth (m)
 - 0.015
 - 0.1
 - 0.3

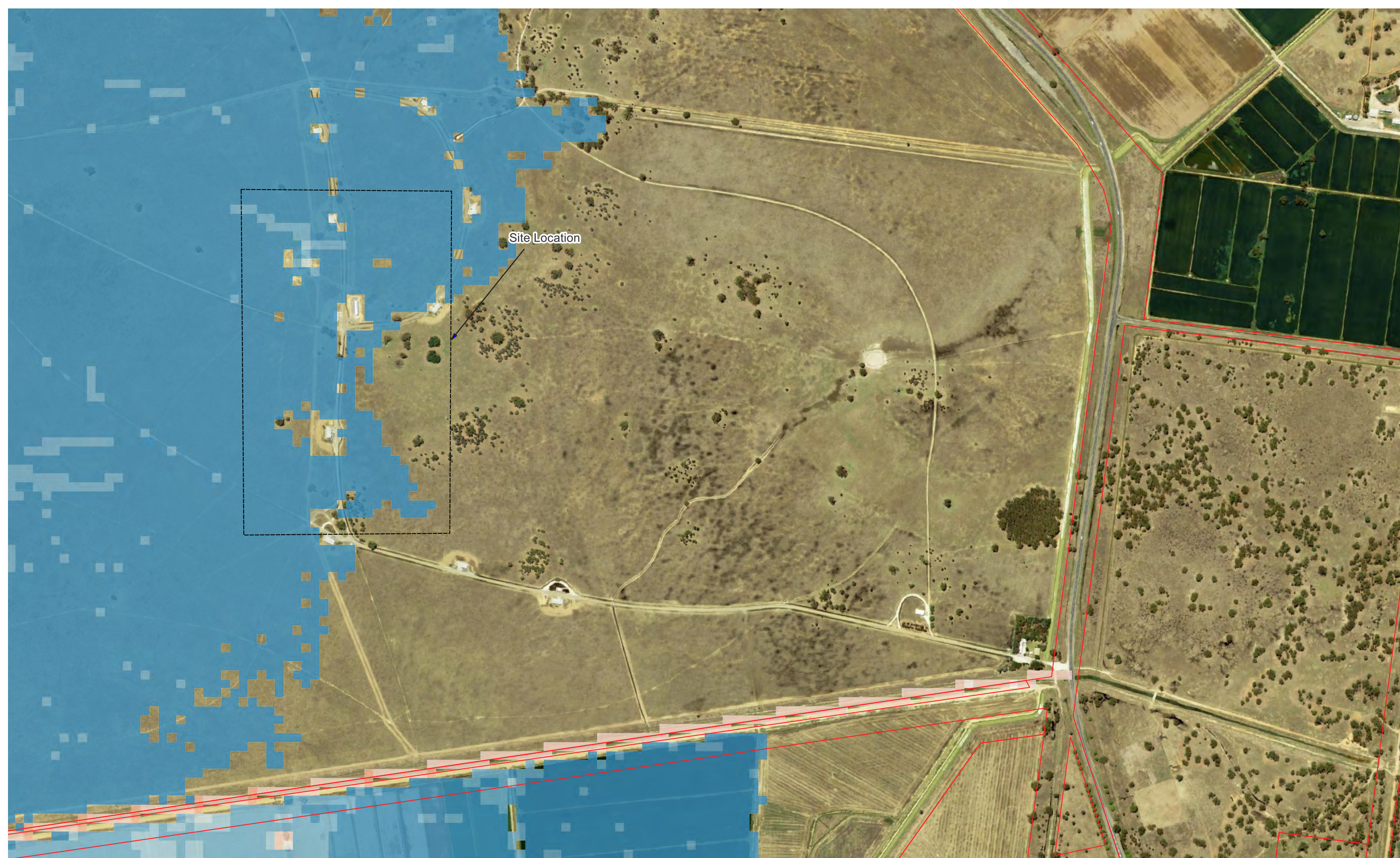


Orica Australia Pty Ltd
Orica Tocumwal Magazine Compound Upgrade

Existing Conditions
0.5% AEP Flood Depth and Level - Existing

Job Number | 12597123
Revision |
Date | June 2024

Figure L04




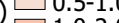
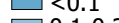
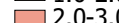
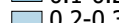
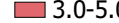
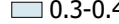
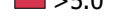


Scale 7500

Paper Size A3

Map projection: Transverse Mercator
 Horizontal datum: GDA 1994
 Grid: GDA 1994 MGA Zone 55



LEGEND

Peak Velocity (m/s)	0.5-1.0
	
	
	
	
	



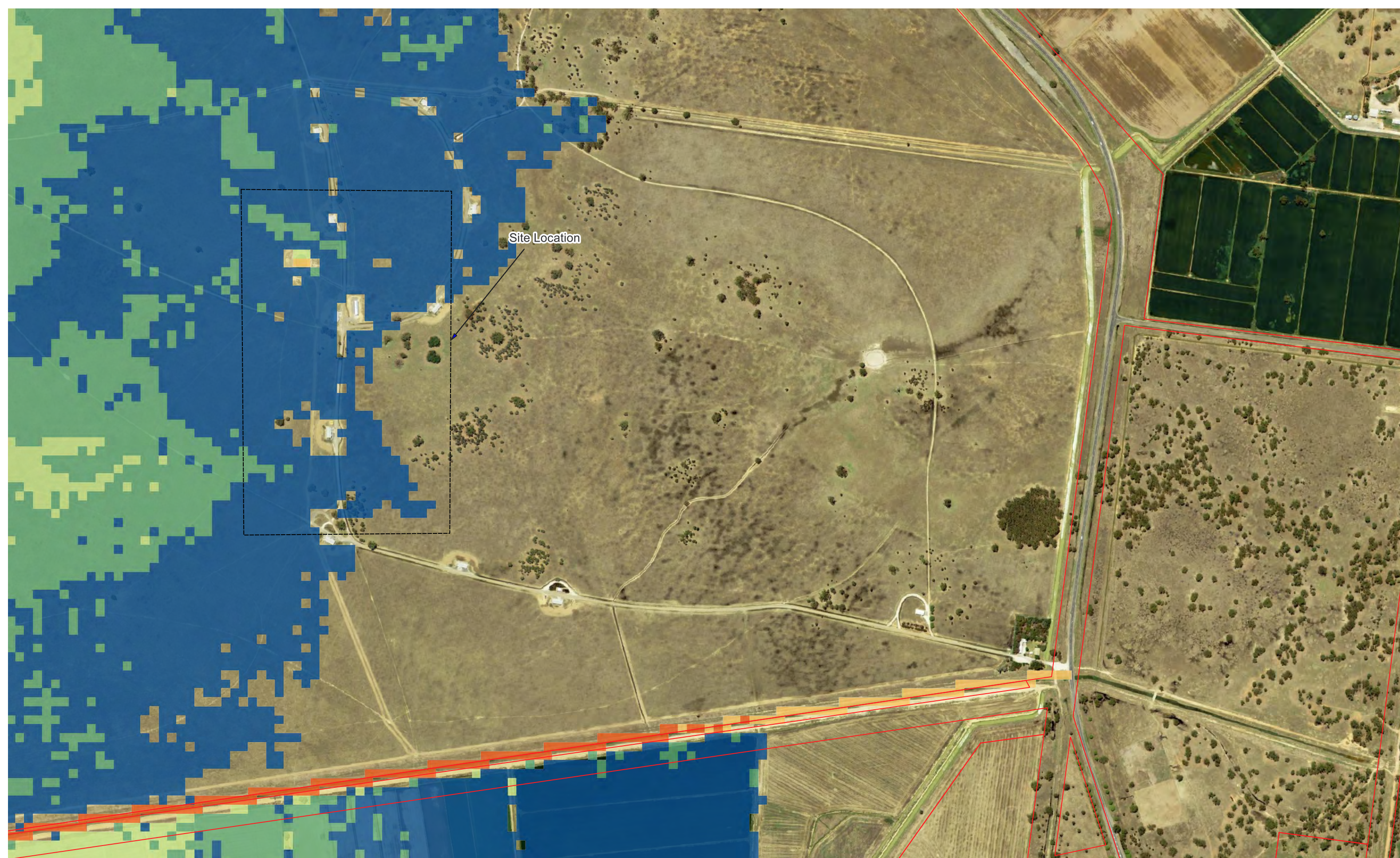
Orica Australia Pty Ltd
 Orica Tocumwal Magazine Compound Upgrade

Existing Conditions
 0.5% AEP Peak Velocity - Existing

Job Number | 12597123
 Revision |
 Date | June 2024

Figure L05

c2024. Whilst every care has been taken to prepare this map, GHD (and The Client) make no representations or warranties about its accuracy, reliability, completeness or suitability for any particular purpose and cannot accept liability and responsibility of any kind (whether in contract, tort or otherwise) for any expenses, losses, damages and/or costs (including indirect or consequential damage) which are or may be incurred by any party as a result of the map being inaccurate, incomplete or unsuitable in any way and for any reason.
 Data Source: NSW LPI:DTDB & DCDB, 2012, GHD Flood Mapping (2024) Created by RRB



Scale 7500

Paper Size A3

Map projection: Transverse Mercator
 Horizontal datum: GDA 1994
 Grid: GDA 1994 MGA Zone 55



LEGEND
Flood Hazard

- H1 - Relatively benign flow conditions. No vulnerability constraints.
- H2 - Unsafe for small vehicles.
- H3 - Unsafe for all vehicles, children and the elderly.
- H4 - Unsafe for all people and all vehicles.
- H5 - Unsafe for all people and all vehicles. Buildings require special engineering design and construction.
- H6 - Unconditionally dangerous. Not suitable for any type of development or evacuation access. All building types considered vulnerable to failure.



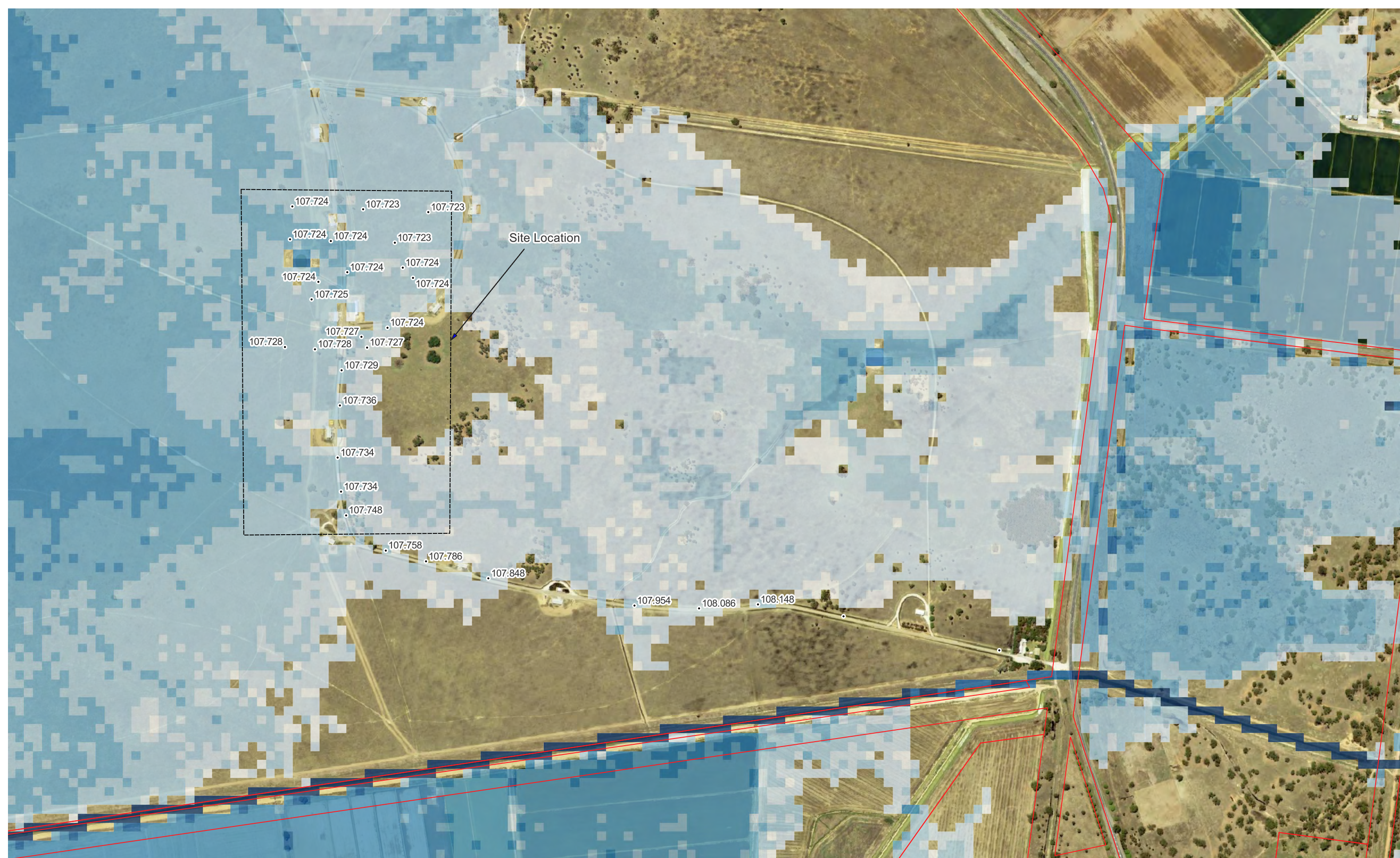
Orica Australia Pty Ltd
 Orica Tocumwal Magazine Compound Upgrade

Existing Conditions
0.5% AEP Flood Hazard - Existing

Job Number | 12597123
 Revision |
 Date | June 2024

Figure L06

c2024. Whilst every care has been taken to prepare this map, GHD (and The Client) make no representations or warranties about its accuracy, reliability, completeness or suitability for any particular purpose and cannot accept liability and responsibility of any kind (whether in contract, tort or otherwise) for any expenses, losses, damages and/or costs (including indirect or consequential damage) which are or may be incurred by any party as a result of the map being inaccurate, incomplete or unsuitable in any way and for any reason.
 Data Source: NSW LPI:DTDB & DCDB, 2012, GHD Flood Mapping (2024) Created by RRB



Scale 7500

Paper Size A3



Map projection: Transverse Mercator
Horizontal datum: GDA 1994
Grid: GDA 1994 MGA Zone 55

LEGEND

• Flood Level (mAHD)	0.5
Flood Depth (m)	1
□ 0.015	2
□ 0.1	>2
□ 0.3	



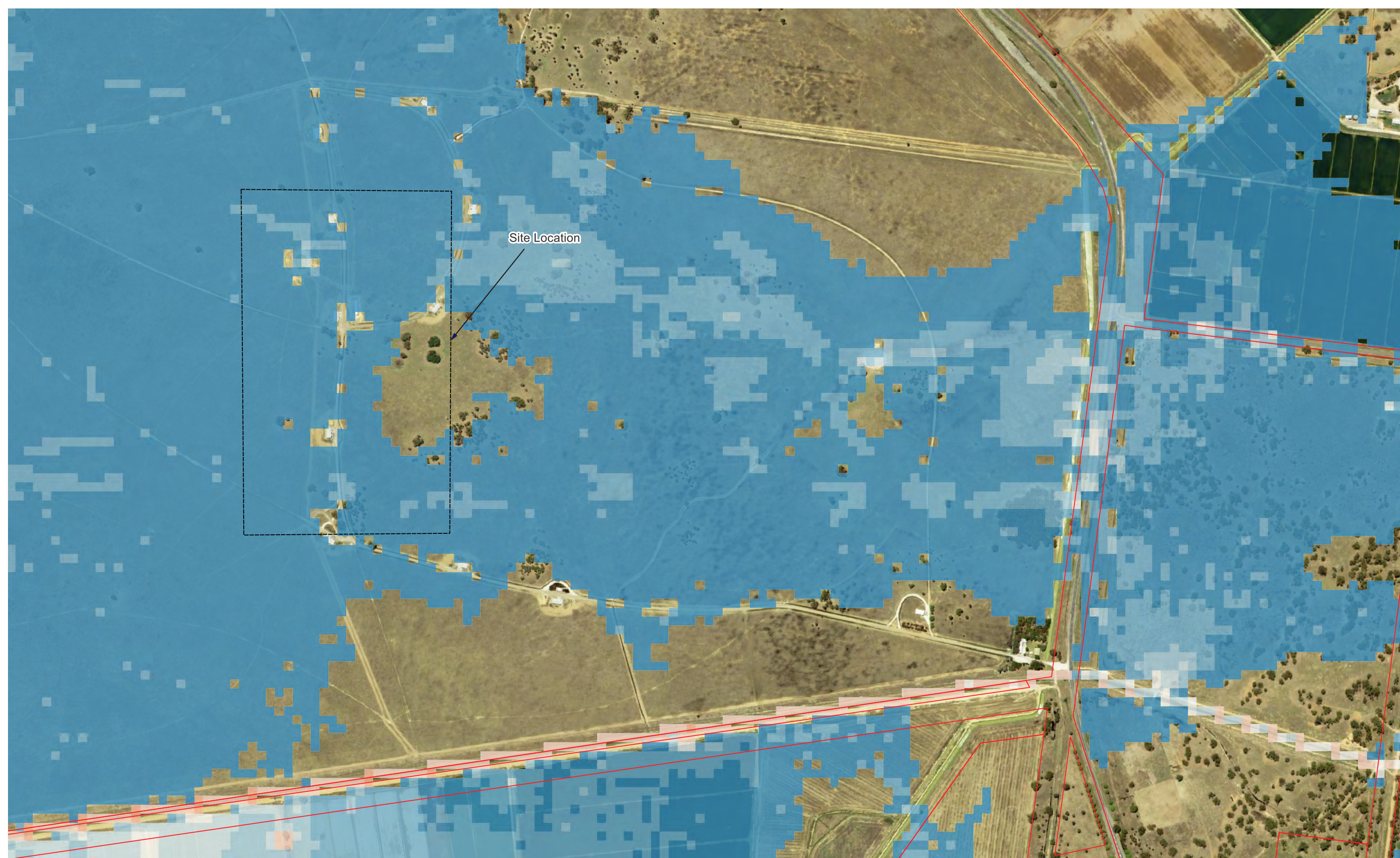
Orica Australia Pty Ltd
Orica Tocumwal Magazine Compound Upgrade

Existing Conditions
0.2% AEP Flood Depth and Level - Existing

Job Number 12597123
Revision
Date June 2024

Figure L07

c2024. Whilst every care has been taken to prepare this map, GHD (and The Client) make no representations or warranties about its accuracy, reliability, completeness or suitability for any particular purpose and cannot accept liability and responsibility of any kind (whether in contract, tort or otherwise) for any expenses, losses, damages and/or costs (including indirect or consequential damage) which are or may be incurred by any party as a result of the map being inaccurate, incomplete or unsuitable in any way and for any reason.
Data Source: NSW LPI:DTDB & DCDB, 2012, GHD Flood Mapping (2024) Created by RRB



Scale 7500

Paper Size A3

Map projection: Transverse Mercator
 Horizontal datum: GDA 1994
 Grid: GDA 1994 MGA Zone 55



LEGEND

Peak Velocity (m/s)	0.5-1.0
<0.1	1.0-2.0
0.1-0.2	2.0-3.0
0.2-0.3	3.0-5.0
0.3-0.4	>5.0
0.4-0.5	



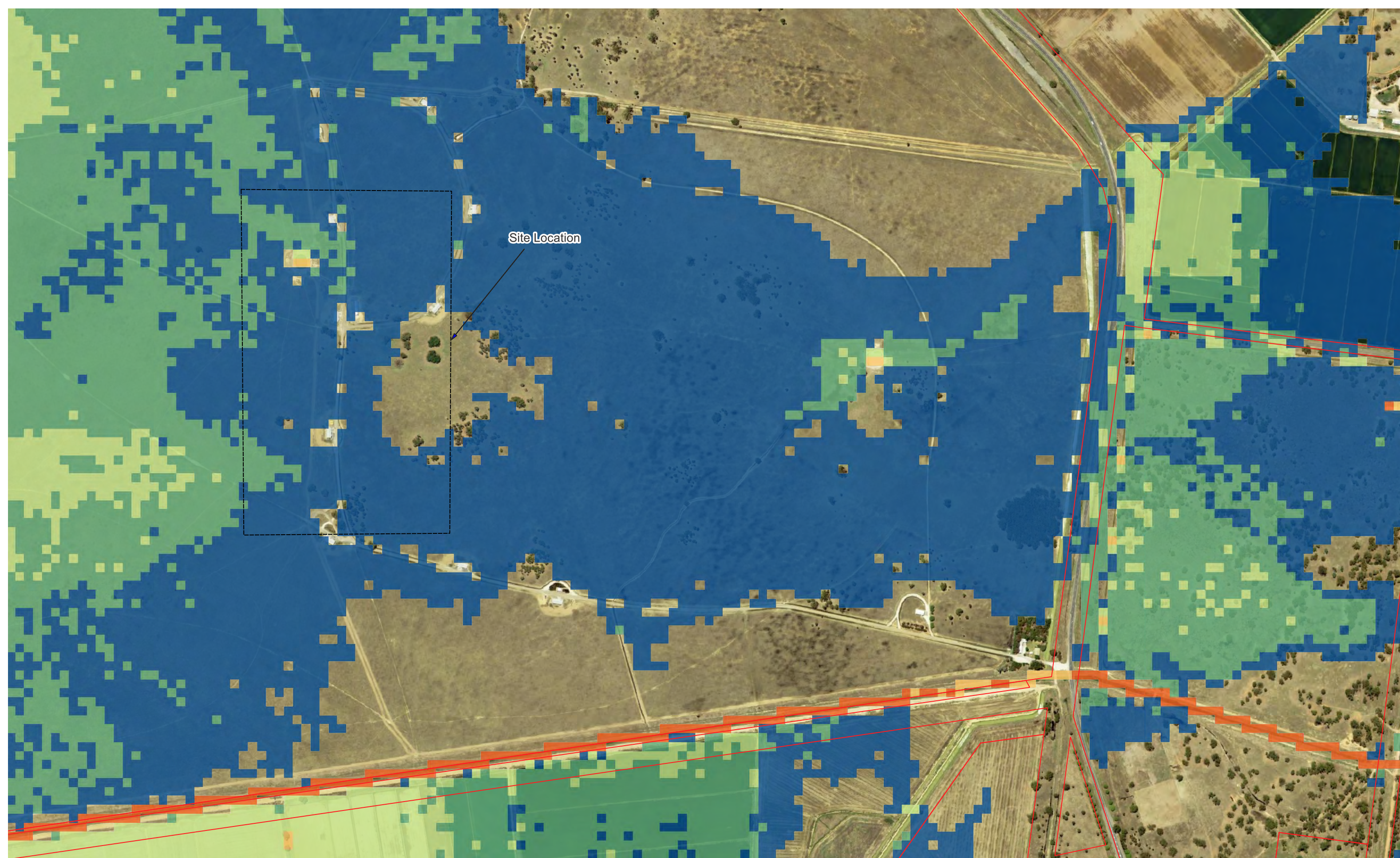
Orica Australia Pty Ltd
 Orica Tocumwal Magazine Compound Upgrade

Existing Conditions
 0.2% AEP Peak Velocity - Existing

Job Number | 12597123
 Revision |
 Date | June 2024

Figure L08

c2024. Whilst every care has been taken to prepare this map, GHD (and The Client) make no representations or warranties about its accuracy, reliability, completeness or suitability for any particular purpose and cannot accept liability and responsibility of any kind (whether in contract, tort or otherwise) for any expenses, losses, damages and/or costs (including indirect or consequential damage) which are or may be incurred by any party as a result of the map being inaccurate, incomplete or unsuitable in any way and for any reason.
 Data Source: NSW LPI:DTDB & DCDB, 2012, GHD Flood Mapping (2024) Created by RRB



Scale 7500

Paper Size A3

Map projection: Transverse Mercator
Horizontal datum: GDA 1994
Grid: GDA 1994 MGA Zone 55



LEGEND
Flood Hazard

- H1 - Relatively benign flow conditions. No vulnerability constraints.
- H2 - Unsafe for small vehicles.
- H3 - Unsafe for all vehicles, children and the elderly.
- H4 - Unsafe for all people and all vehicles.
- H5 - Unsafe for all people and all vehicles. Buildings require special engineering design and construction.
- H6 - Unconditionally dangerous. Not suitable for any type of development or evacuation access. All building types considered vulnerable to failure.

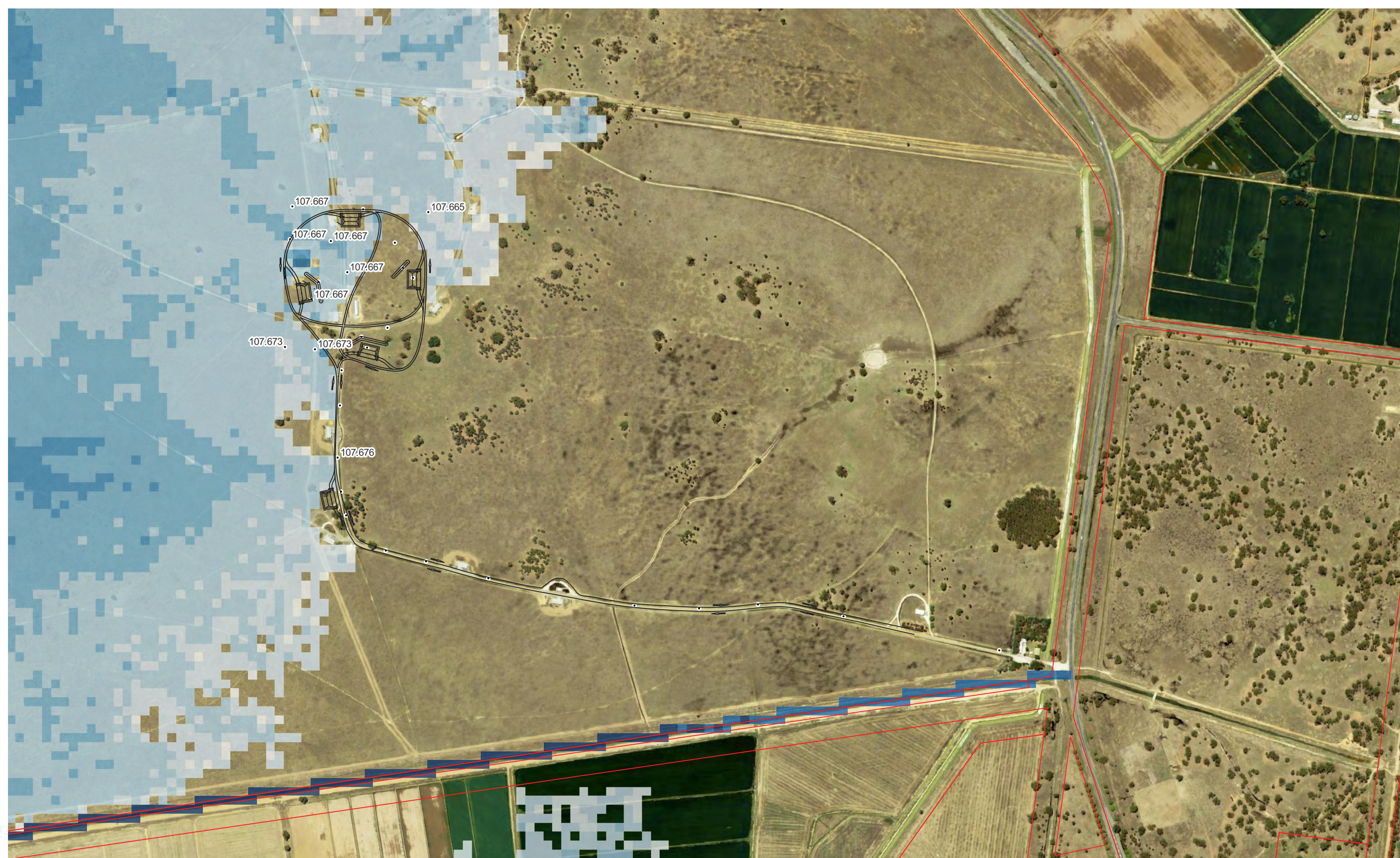


Orica Australia Pty Ltd
Orica Tocumwal Magazine Compound Upgrade

Existing Conditions
0.2% AEP Flood Hazard - Existing

Job Number | 12597123
Revision |
Date | June 2024

Figure L09



Scale 7500

Paper Size A3

Map projection: Transverse Mercator
Horizontal datum: GDA 1994
Grid: GDA 1994 MGA Zone 55



LEGEND

- Flood Level (mAHD) 0.5
- Flood Depth (m) 1
- 0.015 2
- 0.1 >2
- 0.3



Orica Australia Pty Ltd
Orica Tocumwal Magazine Compound Upgrade

Design Conditions
1% AEP Flood Depth and Level - Design

Job Number | 12597123
Revision |
Date | June 2024

Figure L10



Scale 7500

Paper Size A3

Map projection: Transverse Mercator
 Horizontal datum: GDA 1994
 Grid: GDA 1994 MGA Zone 55



LEGEND

Peak Velocity (m/s)	
■ <math><0.1</math>	■ 0.5-1.0
■ 0.1-0.2	■ 1.0-2.0
■ 0.2-0.3	■ 2.0-3.0
■ 0.3-0.4	■ 3.0-5.0
■ 0.4-0.5	■ >5.0



Orica Australia Pty Ltd
 Orica Tocumwal Magazine Compound Upgrade

Design Conditions
 1% AEP Peak Velocity - Design

Job Number | 12597123
 Revision |
 Date | June 2024

Figure L11



Scale 7500

Paper Size A3

Map projection: Transverse Mercator
Horizontal datum: GDA 1994
Grid: GDA 1994 MGA Zone 55



LEGEND
Flood Hazard

- H1 - Relatively benign flow conditions. No vulnerability constraints.
- H2 - Unsafe for small vehicles.
- H3 - Unsafe for all vehicles, children and the elderly.
- H4 - Unsafe for all people and all vehicles.
- H5 - Unsafe for all people and all vehicles. Buildings require special engineering design and construction.
- H6 - Unconditionally dangerous. Not suitable for any type of development or evacuation access. All building types considered vulnerable to failure.

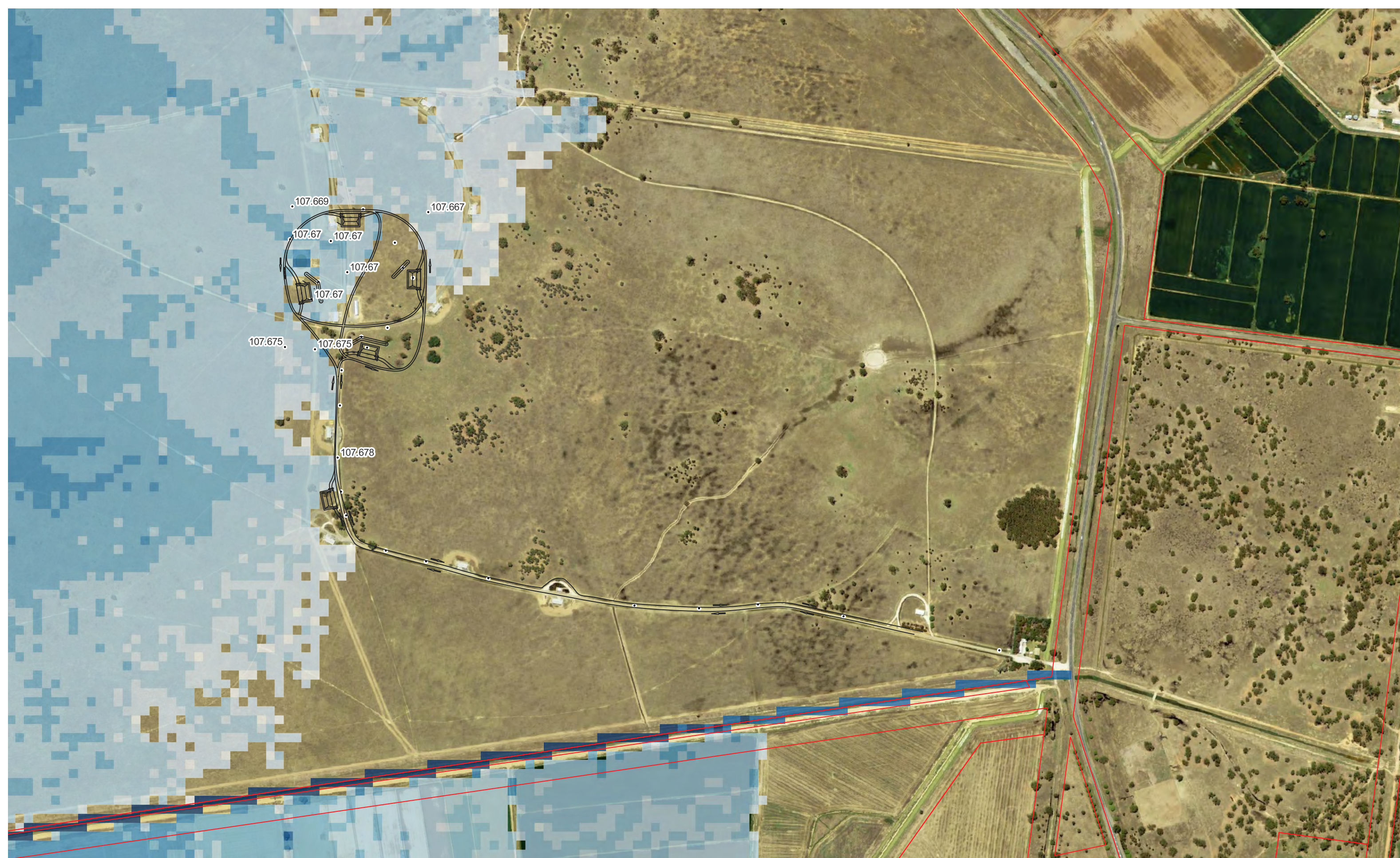


Orica Australia Pty Ltd
Orica Tocumwal Magazine Compound Upgrade

Design Conditions
1% AEP Flood Hazard - Design

Job Number | 12597123
Revision |
Date | June 2024

Figure L12



Scale 7500

Paper Size A3

Map projection: Transverse Mercator
 Horizontal datum: GDA 1994
 Grid: GDA 1994 MGA Zone 55



LEGEND

- Flood Level (mAHD)
 - 0.5
 - 1
 - 2
 - >2
- Flood Depth (m)
 - 0.015
 - 0.1
 - 0.3

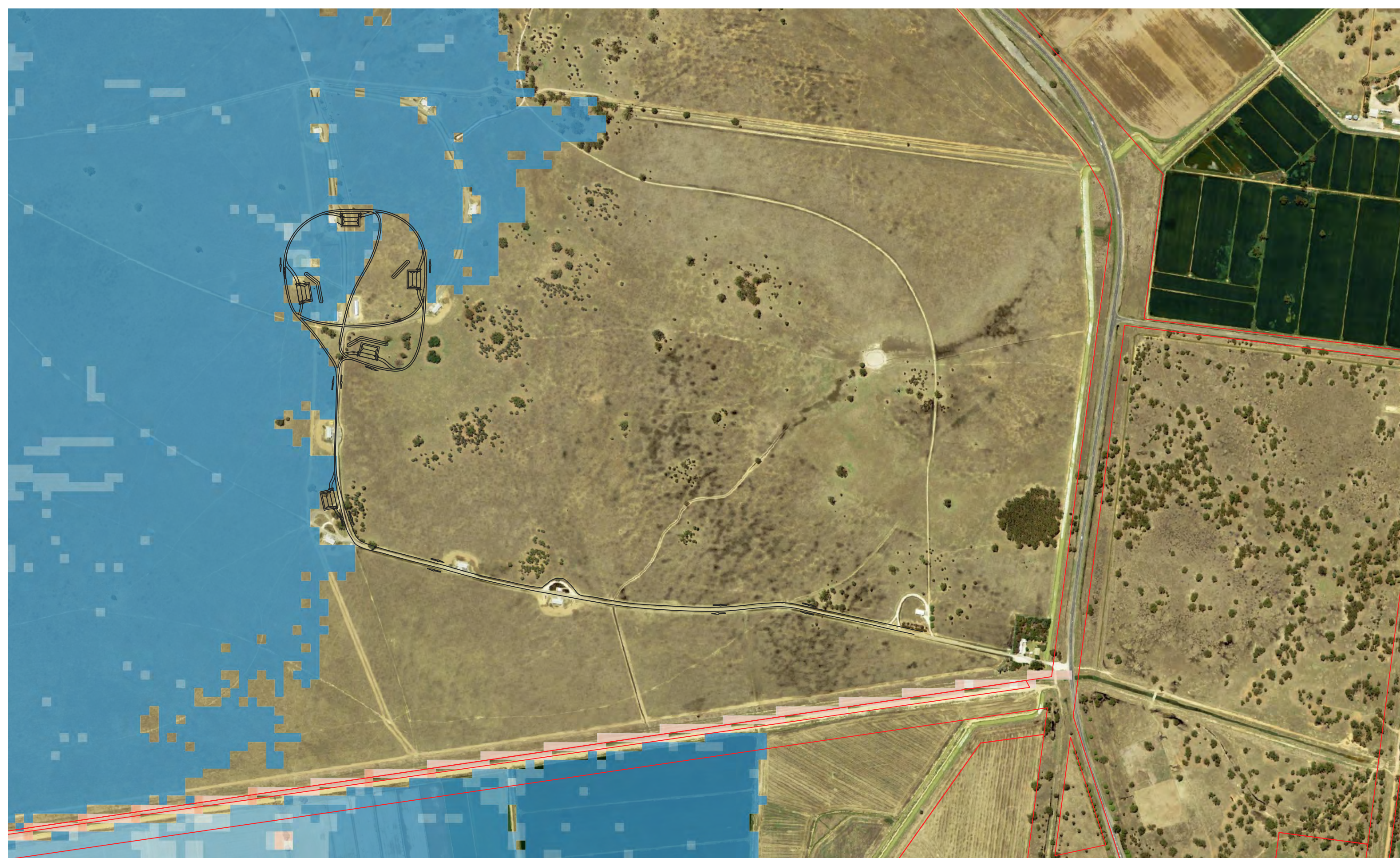


Orica Australia Pty Ltd
 Orica Tocumwal Magazine Compound Upgrade

Design Conditions
 0.5% AEP Flood Depth and Level - Design

Job Number | 12597123
 Revision |
 Date | June 2024

Figure L13



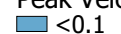
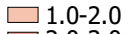
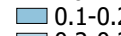
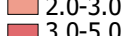
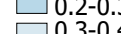
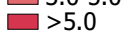
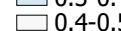

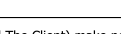
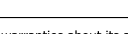
Scale 7500

Paper Size A3

Map projection: Transverse Mercator
 Horizontal datum: GDA 1994
 Grid: GDA 1994 MGA Zone 55



LEGEND

Peak Velocity (m/s)	0.5-1.0
	
	
	
	
	



Orica Australia Pty Ltd
 Orica Tocumwal Magazine Compound Upgrade

Design Conditions
 0.5% AEP Peak Velocity - Design

Job Number | 12597123
 Revision |
 Date | June 2024

Figure L14



Scale 7500

Paper Size A3

Map projection: Transverse Mercator
Horizontal datum: GDA 1994
Grid: GDA 1994 MGA Zone 55



LEGEND
Flood Hazard

- H1 - Relatively benign flow conditions. No vulnerability constraints.
- H2 - Unsafe for small vehicles.
- H3 - Unsafe for all vehicles, children and the elderly.
- H4 - Unsafe for all people and all vehicles.
- H5 - Unsafe for all people and all vehicles. Buildings require special engineering design and construction.
- H6 - Unconditionally dangerous. Not suitable for any type of development or evacuation access. All building types considered vulnerable to failure.

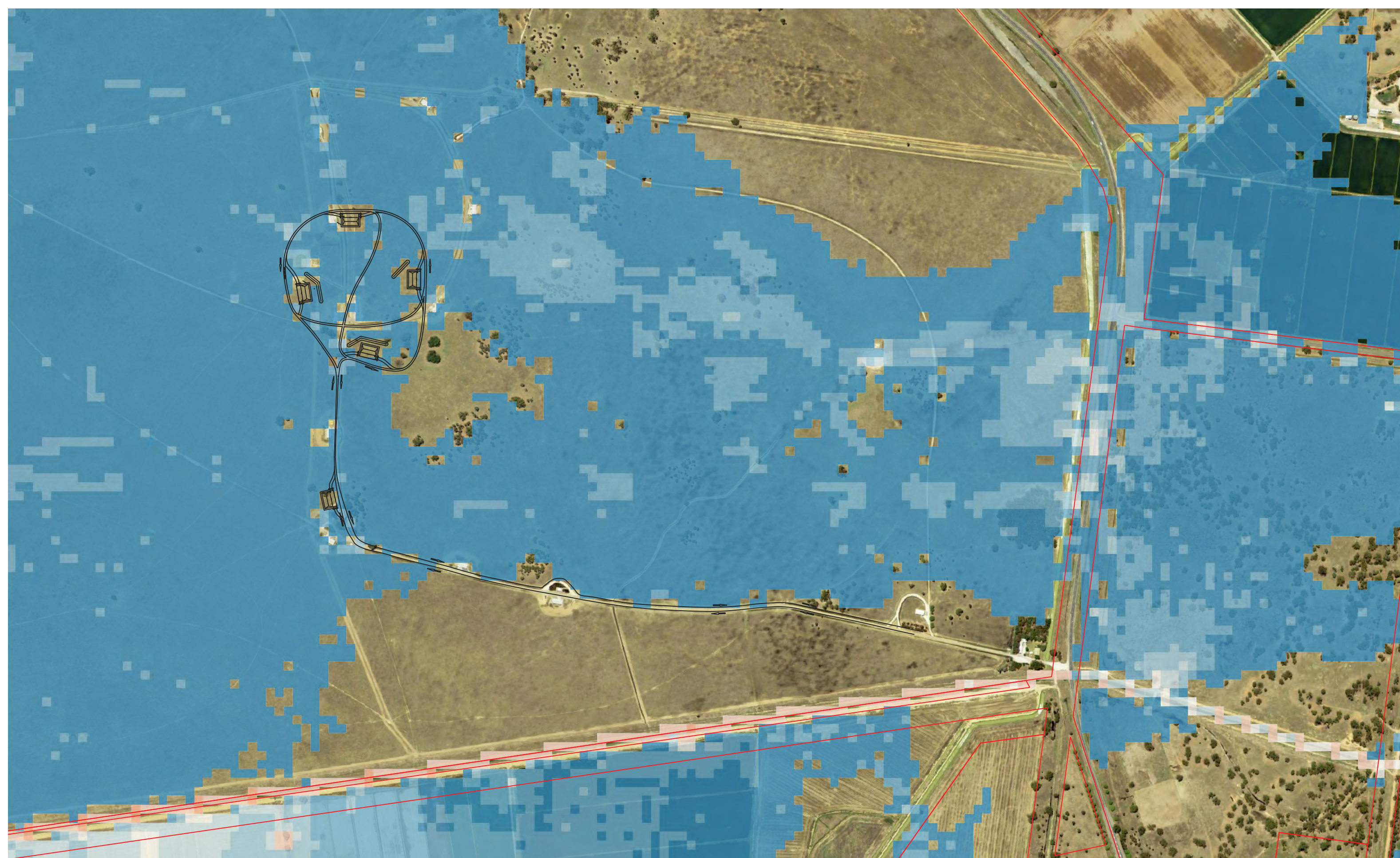


Orica Australia Pty Ltd
Orica Tocumwal Magazine Compound Upgrade

Design Conditions
0.5% AEP Flood Hazard - Design

Job Number | 12597123
Revision |
Date | June 2024

Figure L15



Scale 7500

Paper Size A3

Map projection: Transverse Mercator
 Horizontal datum: GDA 1994
 Grid: GDA 1994 MGA Zone 55



LEGEND

Peak Velocity (m/s)	
■ <math><0.1</math>	■ 0.5-1.0
■ 0.1-0.2	■ 1.0-2.0
■ 0.2-0.3	■ 2.0-3.0
■ 0.3-0.4	■ 3.0-5.0
■ 0.4-0.5	■ >5.0

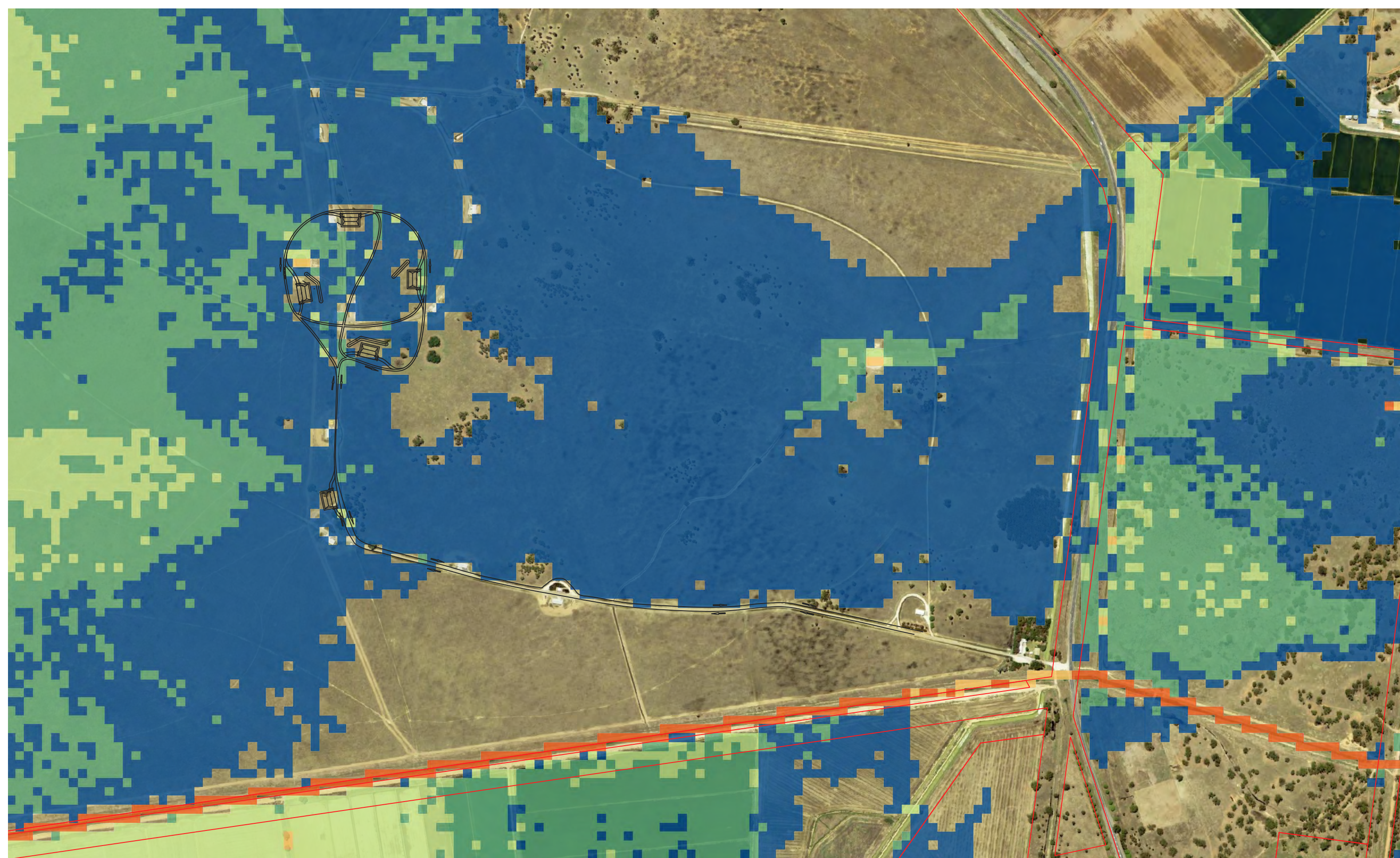


Orica Australia Pty Ltd
 Orica Tocumwal Magazine Compound Upgrade

Design Conditions
 0.2% AEP Peak Velocity - Design

Job Number | 12597123
 Revision |
 Date | June 2024

Figure L17



Scale 7500

Paper Size A3

Map projection: Transverse Mercator
Horizontal datum: GDA 1994
Grid: GDA 1994 MGA Zone 55



LEGEND
Flood Hazard

- H1 - Relatively benign flow conditions. No vulnerability constraints.
- H2 - Unsafe for small vehicles.
- H3 - Unsafe for all vehicles, children and the elderly.
- H4 - Unsafe for all people and all vehicles.
- H5 - Unsafe for all people and all vehicles. Buildings require special engineering design and construction.
- H6 - Unconditionally dangerous. Not suitable for any type of development or evacuation access. All building types considered vulnerable to failure.

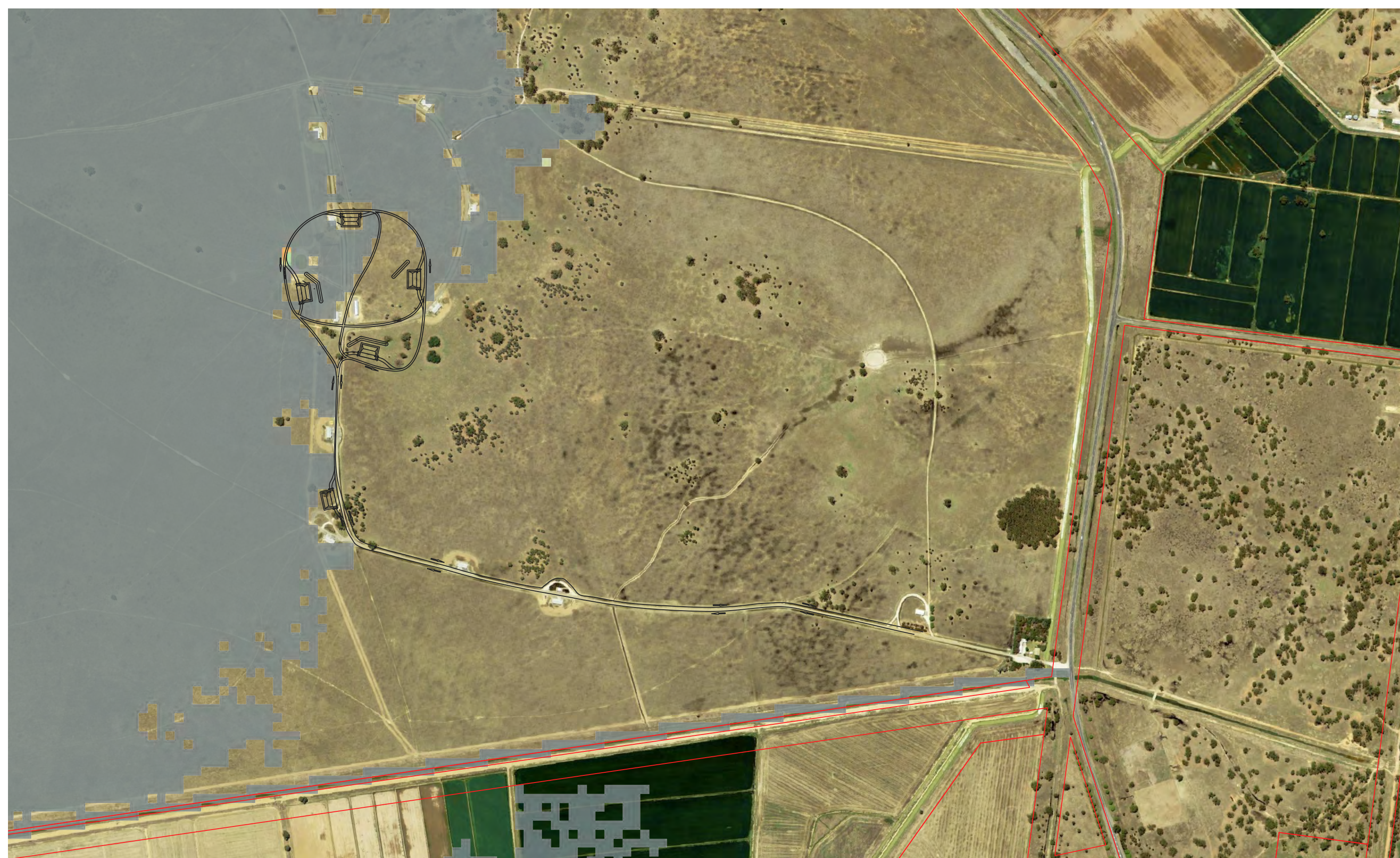


Orica Australia Pty Ltd
Orica Tocumwal Magazine Compound Upgrade

Design Conditions
0.2% AEP Flood Hazard - Design

Job Number | 12597123
Revision |
Date | June 2024

Figure L18



Scale 7500

Paper Size A3

Map projection: Transverse Mercator
 Horizontal datum: GDA 1994
 Grid: GDA 1994 MGA Zone 55



LEGEND

Flood Afflux (m)	
na	0.1 to 0.5
< -2.0	0.5 to 1.0
-2.0 to -1.0	1.0 to 2.0
-1.0 to -0.5	2.0 to 5.0
-0.5 to -0.1	grt 5.0
-0.05 to -0.01	0.01 to 0.05
-0.01 to 0	0.05 to 0.1
0 to 0.01	

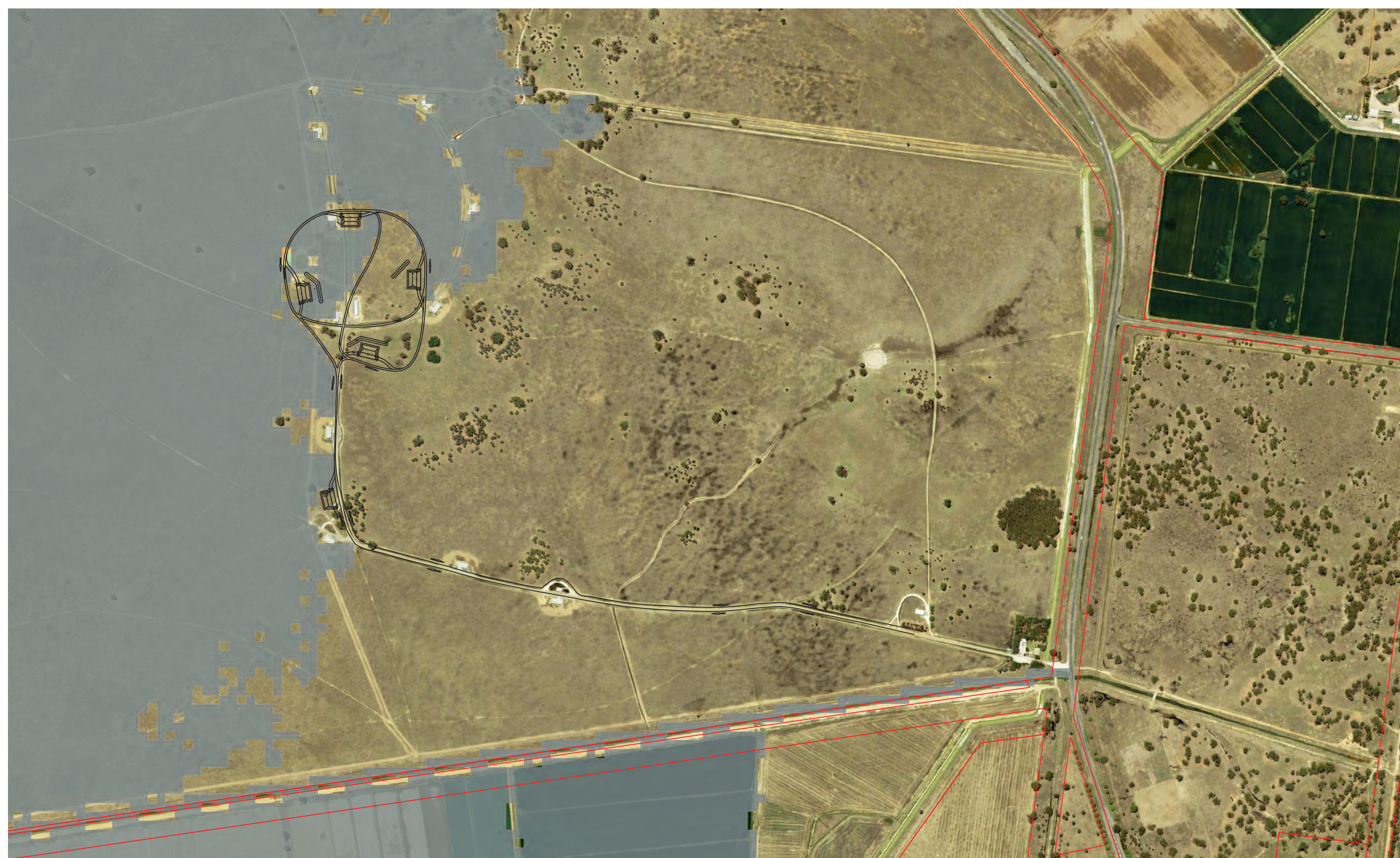


Orica Australia Pty Ltd
 Orica Tocumwal Magazine Compound Upgrade

Design Conditions
 1% AEP Flood Impact

Job Number | 12597123
 Revision |
 Date | June 2024

Figure L19



Scale 7500

Paper Size A3

Map projection: Transverse Mercator
 Horizontal datum: GDA 1994
 Grid: GDA 1994 MGA Zone 55



LEGEND

Flood Afflux (m)	
na	0.1 to 0.5
< -2.0	0.5 to 1.0
-2.0 to -1.0	1.0 to 2.0
-1.0 to -0.5	2.0 to 5.0
-0.5 to -0.1	grt 5.0
-0.05 to -0.01	0.01 to 0.05
-0.01 to 0	0.05 to 0.1
0 to 0.01	

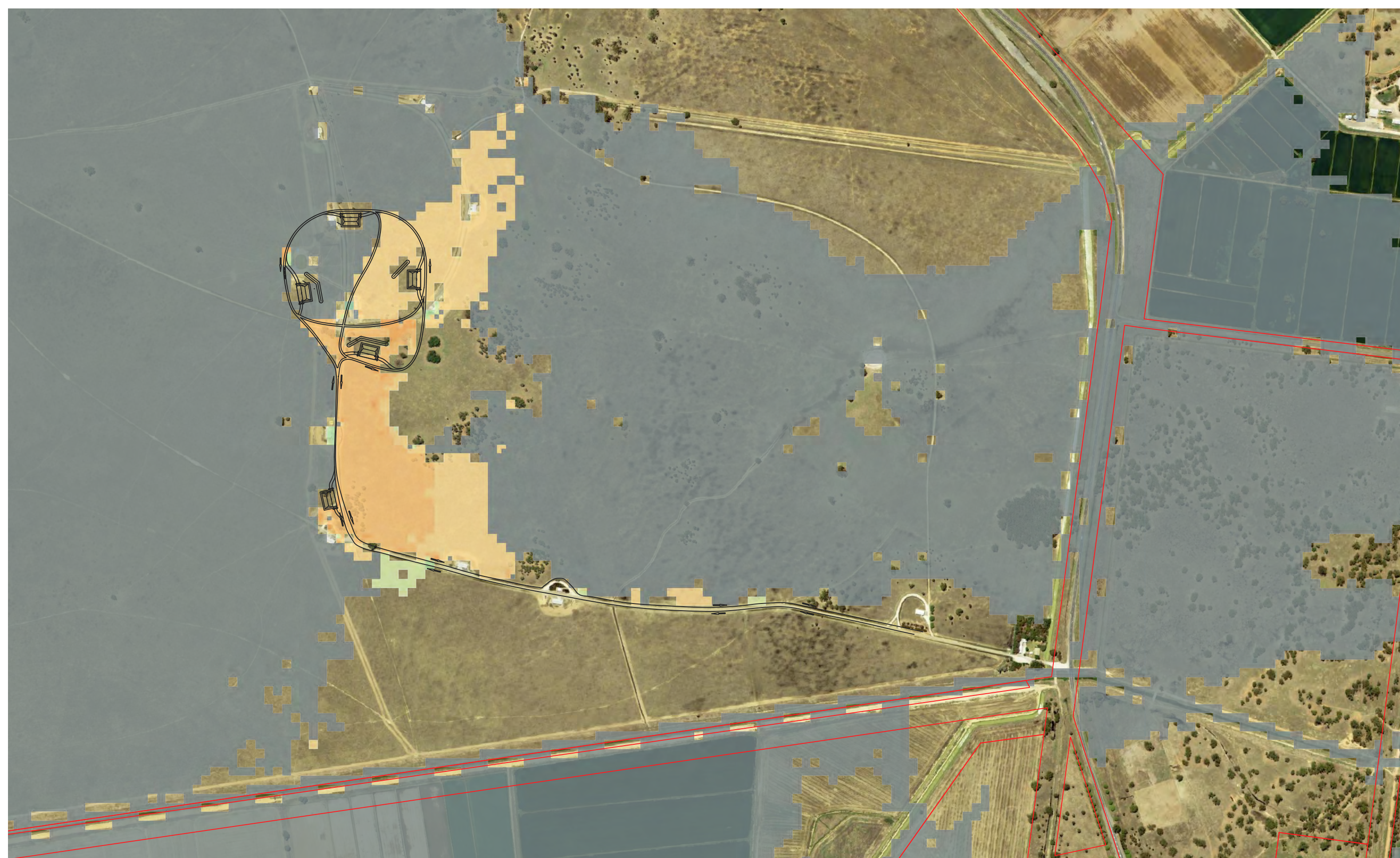


Orica Australia Pty Ltd
 Orica Tocumwal Magazine Compound Upgrade

Design Conditions
0.5% AEP Flood Impact

Job Number | 12597123
 Revision |
 Date | June 2024

Figure L20



Scale 7500

Paper Size A3

Map projection: Transverse Mercator
 Horizontal datum: GDA 1994
 Grid: GDA 1994 MGA Zone 55



LEGEND

Flood Afflux (m)	
na	0.1 to 0.5
< -2.0	0.5 to 1.0
-2.0 to -1.0	1.0 to 2.0
-1.0 to -0.5	2.0 to 5.0
-0.5 to -0.1	grt 5.0
-0.1 to -0.05	0.01 to 0.05
-0.05 to -0.01	0.05 to 0.1
-0.01 to 0	
0 to 0.01	



Orica Australia Pty Ltd
 Orica Tocumwal Magazine Compound Upgrade

Design Conditions
0.2% AEP Flood Impact

Job Number | 12597123
 Revision |
 Date | June 2024

Figure L21