



# TREE SURVEY


ARBORICULTURAL IMPACT ASSESSMENT & TREE PROTECTION PLAN

Indigenous Centre of Excellence  
Western Sydney University  
Version 3

Prepared for:  
Western Sydney University

9 July 2024

## Document information

<b>Title:</b>	Indigenous Centre of Excellence
<b>Report type:</b>	Arboricultural Impact Assessment (AIA) & Tree Protection Plan (TPP)
<b>Prepared by:</b>	 <b>Phil Witten</b> Principal Arborist & GIS Analyst Diploma of Arboriculture   AQF 5 Graduate Certificate of Arboriculture   AQF 8 Registered Consulting Arborist No. 2458 Advanced QTRA   TRAQ Qualification
<b>Contact details:</b>	<b>Tree Survey Pty Limited</b> 📞 0425 536 670 ✉ phil@treesurvey.com.au 🌐 www.treesurvey.com.au 📍 PO Box 125, Hornsby NSW 1630, Australia

## Document status

Document status	Date	Revision description
Version 1	14/05/24	Minor text updates following client review
Version 2	17/05/24	Minor text updates following client review
Version 3	09/07/24	Final version

### © Tree Survey (ABN 94 612 468 792) 2024

Copyright protects this publication. All rights reserved. Except for purposes permitted by the Australian Copyright Act 1968, reproduction, adaption, electronic storage, transmission, and communication to the public by any means is prohibited without our written permission. Any third material, including images, contained in this publication remains the property of the specified copyright owner unless otherwise indicated and is used subject to their licensing conditions.

#### Disclaimer

While Tree Survey uses care and diligence in the preparation of this report, it is not responsible or liable for any mistakes, misprints, omissions, or typographical errors. None of Tree Survey, nor its editors or authors are responsible for the results of any actions taken on the basis of information in this publication. Tree Survey and its editors and authors expressly disclaim all and any liability and responsibility to any person or organisation in reliance, of, or as a consequence of, anything done or omitted to be done by any person or organisation in reliance, whether wholly or partially, upon the whole or part of any of the contents of this publication, including any photographs, statements or descriptions. No representation is made as to the suitability of this publication for any particular purpose. The views expressed in this publication are not necessarily endorsed by this publication, its editors or authors, or the owners or management of Tree Survey.

## Abbreviations

Abbreviation	Description
AQF	Australian Qualifications Framework
AS	Australian Standards
DBH	Diameter at Breast Height
Id	Identification
m	Metre
mm	Millimetre
NDE	Non-Destructive Excavation
NO	Number
NSW	New South Wales
sp.	Species
SRZ	Structural Root Zone
TPZ	Tree Protection Zone
VTA	Visual Tree Assessment

# Contents

<b>1</b>	<b>Background .....</b>	<b>1</b>
1.1	Introduction.....	1
1.2	The proposal .....	1
1.3	Documents and plans referenced .....	1
1.4	Council tree preservation .....	2
1.5	The subject trees.....	2
<b>2</b>	<b>Arboricultural Impact Assessment (AIA).....</b>	<b>3</b>
2.1	Impact assessment .....	3
<b>3</b>	<b>Results .....</b>	<b>4</b>
3.1	Encroachment within the TPZ.....	4
3.2	Tree removal and retention .....	4
<b>4</b>	<b>Discussion .....</b>	<b>7</b>
4.1	Nil encroachment .....	7
4.2	Minor encroachment.....	7
4.3	Major encroachment.....	7
<b>5</b>	<b>Tree Protection Plan (TPP).....</b>	<b>17</b>
5.1	Tree removal and retention .....	17
5.2	Tree removal .....	17
5.3	Tree pruning .....	17
5.4	Tree protection fencing.....	18
5.5	Restricted activities within the TPZ .....	18
5.6	Trunk protection .....	19
5.7	Ground protection.....	19
5.8	Demolition .....	19
5.9	Excavations .....	20
5.10	Underground services .....	20
5.11	Root pruning.....	20
5.12	Site inspections .....	21
	<b>References .....</b>	<b>31</b>
	<b>Appendix I - STARS© assessment matrix .....</b>	<b>32</b>

# 1 Background

## 1.1 Introduction

Tree Survey was commissioned by Western Sydney University to prepare an Arboricultural Impact Assessment (AIA) and Tree Protection Plan (TPP) for the proposed Indigenous Centre of Excellence (ICoE) located at 171 Victoria Road, Parramatta.

This report responds to the SSD-64916225 Secretary's Environmental Assessment Requirement (SEARs) number # 8 which was issued by the Department of Planning, Housing and Infrastructure on 21st November 2023.

The purpose of this report is to:

- Identify the trees within and adjacent to the proposed construction footprint.
- Assess the current health and condition of the subject trees.
- Assess the potential impacts of the development on the subject trees.
- Evaluate the significance of the subject trees and assess their suitability for retention.

## 1.2 The proposal

The key features of the proposal are summarised as follows:

- Indigenous Centre of Excellence building.
- Associated civil works and landscaping.

## 1.3 Documents and plans referenced

The conclusions and recommendations of this report are based on the Australian Standard, AS 4970-2009, Protection of Trees on Development Sites (AS4970), the findings from the site inspections, and analysis of the documents/plans listed in **Table 1**.

**Table 1: Documents and plans**

Document	Author	Version	Date
Engineering Plans	TTW	P1	08/05/24
Architectural Plans	JCBA	2	07/05/24
Landscape Plans	JILA	C	07/05/24
Detail Survey	LTS	-	15/06/23

The site plan has been used as a map layer in the **Arboricultural Impact Assessment and Tree Protection Plan**.

## 1.4 Council tree preservation

The Parramatta Development Control Plan (DCP) 2023 defines a protected tree as:

- Any tree or palm - whether indigenous, endemic, exotic, or introduced species with a height equal to or exceeding 5 metres.
- Any tree or mangrove vegetation located on public land, irrespective of size.
- Any tree or plant, irrespective of size that:
  - Is listed in a Register of Significant Trees.
  - Forms part of a heritage item.
  - Is within a heritage conservation area
  - Forms part of an Aboriginal object.
  - Is within an Aboriginal place of heritage significance.

Trees and vegetation that fall within these specifications are protected unless listed as an exempt species. Trees that do not meet the prescribed dimensions have generally not been included in this report.

## 1.5 The subject trees

A total of **59** trees were assessed and included in this report. The subject trees were assessed in accordance with a visual tree assessment (VTA) as formulated by Mattheck & Breloer (1994)<sup>1</sup>, and practices consistent with modern arboriculture. The following limitations apply to this methodology:

- Trees were inspected from ground level without the use of any invasive or diagnostic tools and testing. Trees within adjacent properties or restricted areas were not subject to a complete visual inspection (i.e., defects and abnormalities may be present but not recorded).
- Diameter at breast height (DBH) has been accurately measured using a diameter tape (where access to the trees was available). Tree height and canopy spread were estimated unless otherwise stated.
- Tree protection zones have been calculated in accordance with Australian Standard, AS 4970-2009, Protection of Trees on Development Sites, using the DBH measurements.

A tree retention assessment has been undertaken in accordance with the Institute of Australian Consulting Arboriculturalists (IACA) Significance of a Tree, Assessment Rating System (see **Appendices**). Further information, observations, and measurements specific to each of the subject trees can be found in **Chapter 3**.

---

<sup>1</sup> VTA is an internationally recognised practice in the visual assessment of trees as formulated by Mattheck & Breloer (1994). Principle explanations and illustrations are contained within the publication, Field Guide for Visual Tree Assessment by Mattheck, C., and Breloer, H. Arboricultural Journal, Vol 18 pp 1-23 (1994).

## 2 Arboricultural Impact Assessment (AIA)

### 2.1 Impact assessment

The Australian Standard, Protection of Trees on Development Sites (AS4970), describes two zones that need to be considered when undertaking an arboricultural impact assessment:

- **Tree protection zone (TPZ):** The TPZ is the combination of crown and root area that requires protection during the construction process so that the tree can remain viable. The TPZ is calculated by measuring the DBH and multiplying it by twelve (12). The resulting value is applied as a radial measurement from the centre of the trunk to delineate the TPZ.
- **Structural root zone (SRZ):** The SRZ is the area of the root system used for stability, mechanical support, and anchorage of the tree.

Encroachment within the TPZ is acceptable, providing that the arborist can demonstrate that the tree will remain viable. There are three (3) levels of encroachment defined by AS4970:

- **Nil encroachment (0%):** No encroachment within the TPZ.
- **Minor encroachment (<10%):** The encroachment is less than 10% of the TPZ.
- **Major encroachment (>10%):** The encroachment is greater than 10% of the TPZ.

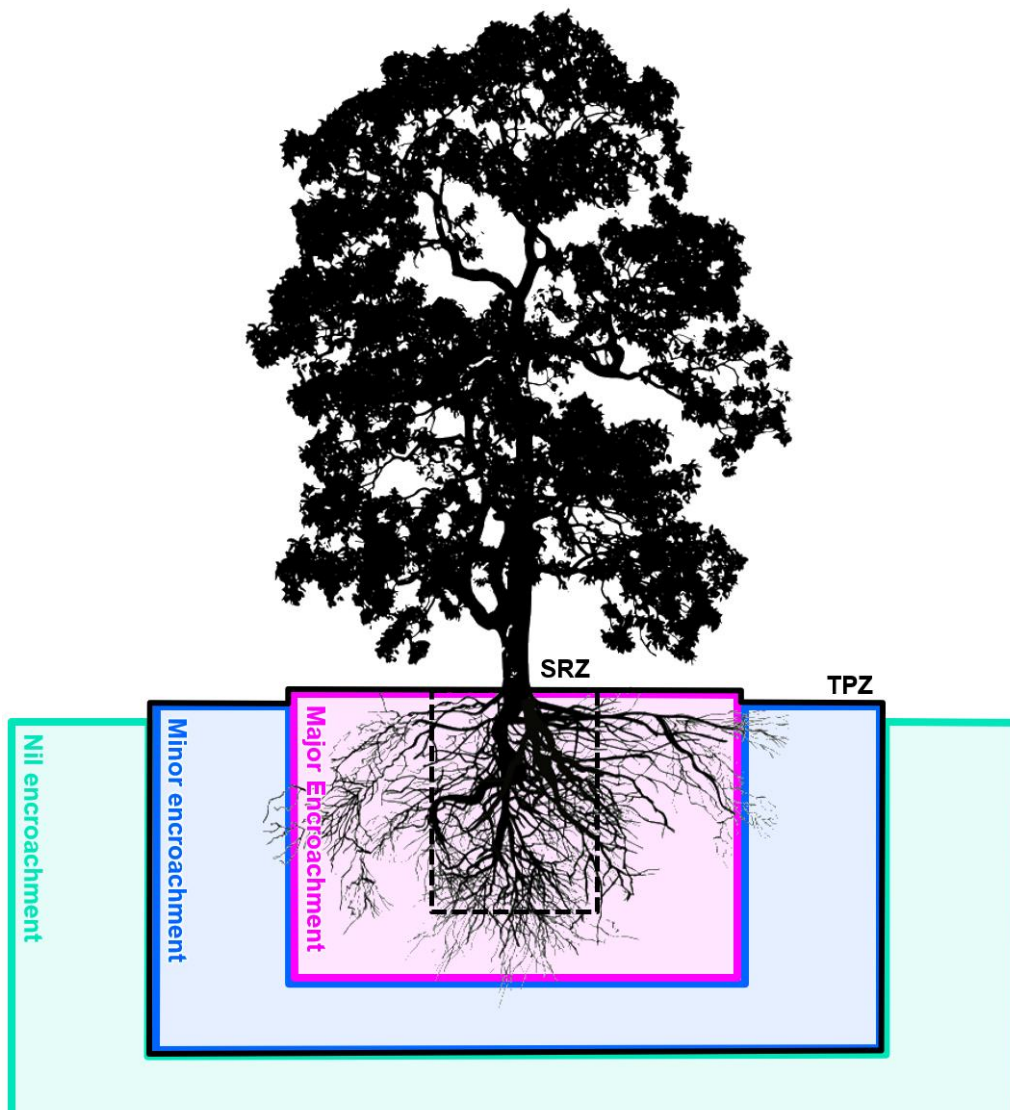


Figure 1: Three (3) levels of encroachment

### 3 Results

**Table 2** shows the results of the arboricultural assessment. Key points are:

#### 3.1 Encroachment within the TPZ

A summary of trees impacted directly by the proposed construction footprint is outlined below:

- **Nil encroachment (0%):** A total of **3** trees will be subject to nil encroachment.
- **Minor encroachment (<10%):** A total of **4** trees will be subject to minor encroachment.
- **Major encroachment (>10%):** A total of **52** trees will be subject to major encroachment.

#### 3.2 Tree removal and retention

A summary of the total proposed tree removals is outlined below:

- **Retain:** A total of **7** trees are proposed for retention.
- **Remove:** A total of **52** trees are proposed for removal.

Table 2: Results of the arboricultural assessment

Id.	Botanical name	Height (metres)	Spread (metres diameter)	Health	Structure	Age class	Tree significance	Useful life expectancy	Priority for retention	DBH 1 (millimetres diameter)	DBH 2 (millimetres diameter)	DBH 3 (millimetres diameter)	DBH Combined (millimetres diameter)	DRB (millimetres diameter)	TPZ (metres radius)	SRZ (metres radius)	Encroachment	% Encroachment within TPZ	Other notes	Proposal
1	<i>Auranticarpa rhombifolia</i>	5	4	Good	Good	Mature	Low	Medium	Low	150	150	-	210	260	2.5	1.9	Major	100%	Removal is required to accommodate new landscaping	Remove
2	<i>Auranticarpa rhombifolia</i>	6	3	Good	Good	Mature	Low	Medium	Low	150	-	-	150	200	2.0	1.7	Major	100%	Removal is required to accommodate new landscaping	Remove
3	<i>Prunus sp.</i>	5	3	Good	Fair	Mature	Low	Medium	Low	150	-	-	150	200	2.0	1.7	Major	100%	Removal is required to accommodate new landscaping	Remove
4	<i>Eucalyptus microcorys</i>	16	10	Good	Good	Mature	Medium	Medium	Medium	700	-	-	700	750	8.4	2.9	Minor	9%	-	Retain
5	<i>Prunus sp.</i>	5	4	Good	Good	Mature	Low	Medium	Low	200	-	-	200	250	2.4	1.8	Major	100%	Removal is required to accommodate new landscaping	Remove
6	<i>Prunus sp.</i>	5	4	Good	Good	Mature	Low	Medium	Low	250	-	-	250	300	3.0	2.0	Major	100%	Removal is required to accommodate new landscaping	Remove
7	<i>Prunus sp.</i>	5	4	Good	Good	Mature	Low	Medium	Low	200	-	-	200	250	2.4	1.8	Major	100%	Removal is required to accommodate new landscaping	Remove
8	<i>Prunus sp.</i>	5	4	Good	Good	Mature	Low	Medium	Low	200	150	-	250	300	3.0	2.0	Major	100%	Removal is required to accommodate new landscaping	Remove
9	<i>Prunus sp.</i>	5	4	Good	Good	Mature	Low	Medium	Low	200	150	-	250	300	3.0	2.0	Major	100%	Removal is required to accommodate new landscaping	Remove
10	<i>Prunus sp.</i>	5	4	Good	Good	Mature	Low	Medium	Low	250	-	-	250	300	3.0	2.0	Major	100%	Removal is required to accommodate new landscaping	Remove
11	<i>Ficus hillii</i>	10	16	Good	Good	Mature	Medium	Medium	Medium	500	-	-	500	550	6.0	2.6	Major	100%	-	Remove
12	<i>Prunus sp.</i>	3	3	Good	Good	Mature	Low	Medium	Low	200	-	-	200	250	2.4	1.8	Major	27%	-	Remove
13	<i>Prunus sp.</i>	3	2	Good	Good	Mature	Low	Medium	Low	150	-	-	150	200	2.0	1.7	Major	100%	-	Remove
14	<i>Ficus hillii</i>	10	14	Good	Good	Mature	Medium	Medium	Medium	500	-	-	500	550	6.0	2.6	Major	100%	-	Remove
15	<i>Auranticarpa rhombifolia</i>	5	4	Good	Good	Mature	Low	Medium	Low	150	150	150	260	310	3.1	2.0	Major	100%	-	Remove
16	<i>Prunus sp.</i>	3	2	Good	Good	Mature	Low	Medium	Low	200	-	-	200	250	2.4	1.8	Major	100%	-	Remove
17	<i>Prunus sp.</i>	5	3	Good	Good	Mature	Low	Medium	Low	200	-	-	200	250	2.4	1.8	Major	100%	-	Remove
18	<i>Prunus sp.</i>	5	4	Good	Good	Mature	Low	Medium	Low	200	-	-	200	250	2.4	1.8	Major	100%	-	Remove
19	<i>Prunus sp.</i>	4	2	Good	Good	Mature	Low	Medium	Low	150	-	-	150	200	2.0	1.7	Major	100%	-	Remove
20	<i>Prunus sp.</i>	5	4	Good	Good	Mature	Low	Medium	Low	250	-	-	250	300	3.0	2.0	Major	100%	-	Remove
21	<i>Auranticarpa rhombifolia</i>	6	5	Good	Good	Mature	Low	Medium	Low	300	-	-	300	350	3.6	2.1	Major	100%	-	Remove
22	<i>Prunus sp.</i>	5	3	Good	Good	Mature	Low	Medium	Low	200	-	-	200	250	2.4	1.8	Major	100%	-	Remove
23	<i>Prunus sp.</i>	4	4	Good	Good	Mature	Low	Medium	Low	200	-	-	200	250	2.4	1.8	Major	100%	-	Remove
24	<i>Auranticarpa rhombifolia</i>	7	5	Good	Good	Mature	Low	Medium	Low	250	-	-	250	300	3.0	2.0	Major	100%	-	Remove
25	<i>Auranticarpa rhombifolia</i>	7	5	Good	Good	Mature	Low	Medium	Low	150	150	150	260	310	3.1	2.0	Major	100%	-	Remove
26	<i>Prunus sp.</i>	5	4	Good	Good	Mature	Low	Medium	Low	200	-	-	200	250	2.4	1.8	Major	100%	-	Remove
27	<i>Prunus sp.</i>	5	3	Good	Good	Mature	Low	Medium	Low	200	-	-	200	250	2.4	1.8	Major	100%	-	Remove
28	<i>Auranticarpa rhombifolia</i>	7	5	Good	Good	Mature	Low	Medium	Low	250	-	-	250	300	3.0	2.0	Major	100%	-	Remove
29	<i>Prunus sp.</i>	5	5	Good	Good	Mature	Low	Medium	Low	250	-	-	250	300	3.0	2.0	Major	100%	-	Remove
30	<i>Auranticarpa rhombifolia</i>	7	3	Good	Good	Mature	Low	Medium	Low	200	-	-	200	250	2.4	1.8	Major	100%	-	Remove
31	<i>Auranticarpa rhombifolia</i>	6	4	Good	Fair	Mature	Low	Medium	Low	150	150	150	260	310	3.1	2.0	Major	100%	-	Remove
32	<i>Auranticarpa rhombifolia</i>	8	6	Good	Fair	Mature	Low	Medium	Low	250	200	150	350	400	4.2	2.3	Major	99%	-	Remove

Id.	Botanical name	Height (metres)	Spread (metres diameter)	Health	Structure	Age class	Tree significance	Useful life expectancy	Priority for retention	DBH 1 (millimetres diameter)	DBH 2 (millimetres diameter)	DBH 3 (millimetres diameter)	DBH Combined (millimetres diameter)	DRB (millimetres diameter)	TPZ (metres radius)	SRZ (metres radius)	Encroachment	% Encroachment within TPZ	Other notes	Proposal
33	<i>Auranticarpa rhombifolia</i>	5	4	Good	Fair	Mature	Low	Medium	Low	200	150	150	290	340	3.5	2.1	Major	100%	-	Remove
34	<i>Auranticarpa rhombifolia</i>	6	4	Poor	Fair	Mature	Low	Medium	Low	200	150	150	290	340	3.5	2.1	Major	100%	Minor canopy dieback.	Remove
35	<i>Auranticarpa rhombifolia</i>	6	4	Good	Fair	Mature	Low	Medium	Low	200	-	-	200	250	2.4	1.8	Major	100%	-	Remove
36	<i>Ficus hillii</i>	12	14	Good	Good	Mature	Medium	Medium	Medium	450	-	-	450	500	5.4	2.5	Major	85%	-	Remove
37	<i>Ficus hillii</i>	10	12	Good	Good	Mature	Medium	Medium	Medium	400	-	-	400	450	4.8	2.4	Major	88%	-	Remove
38	<i>Ficus hillii</i>	10	12	Good	Good	Mature	Medium	Medium	Medium	400	-	-	400	450	4.8	2.4	Major	88%	-	Remove
39	<i>Waterhousea floribunda</i>	6	8	Good	Good	Mature	Low	Medium	Low	350	-	-	350	400	4.2	2.3	Nil	0%	-	Retain
40	<i>Melaleuca linariifolia</i>	10	10	Fair	Fair	Mature	High	Medium	High	950	-	-	950	1000	11.4	3.3	Minor	3%	-	Retain
41	<i>Ficus hillii</i>	10	12	Good	Good	Mature	Medium	Medium	Medium	450	-	-	450	500	5.4	2.5	Major	84%	-	Remove
42	<i>Waterhousea floribunda</i>	6	9	Good	Good	Mature	Low	Medium	Low	350	-	-	350	400	4.2	2.3	Minor	1%	-	Retain
43	<i>Ficus hillii</i>	10	12	Good	Good	Mature	Medium	Medium	Medium	400	-	-	400	450	4.8	2.4	Major	85%	-	Remove
44	<i>Waterhousea floribunda</i>	6	6	Good	Good	Mature	Low	Medium	Low	350	-	-	350	400	4.2	2.3	Minor	1%	-	Retain
45	<i>Ficus hillii</i>	10	12	Good	Good	Mature	Medium	Medium	Medium	450	-	-	450	500	5.4	2.5	Major	82%	-	Remove
46	<i>Waterhousea floribunda</i>	6	6	Good	Good	Mature	Low	Medium	Low	350	-	-	350	400	4.2	2.3	Nil	0%	-	Retain
47	<i>Waterhousea floribunda</i>	6	6	Good	Good	Mature	Low	Medium	Low	300	-	-	300	350	3.6	2.1	Nil	0%	-	Retain
48	<i>Ficus hillii</i>	10	14	Good	Good	Mature	Medium	Medium	Medium	550	-	-	550	600	6.6	2.7	Major	76%	-	Remove
49	<i>Ficus hillii</i>	10	14	Good	Good	Mature	Medium	Medium	Medium	450	-	-	450	500	5.4	2.5	Major	71%	-	Remove
50	<i>Ficus hillii</i>	10	12	Good	Good	Mature	Medium	Medium	Medium	550	-	-	550	600	6.6	2.7	Major	66%	-	Remove
51	<i>Ficus hillii</i>	10	12	Good	Good	Mature	Medium	Medium	Medium	550	-	-	550	600	6.6	2.7	Major	65%	-	Remove
52	<i>Ficus hillii</i>	10	12	Good	Good	Mature	Medium	Medium	Medium	500	-	-	500	550	6.0	2.6	Major	61%	-	Remove
53	<i>Ficus hillii</i>	10	12	Good	Good	Mature	Medium	Medium	Medium	500	-	-	500	550	6.0	2.6	Major	80%	-	Remove
54	<i>Ficus hillii</i>	10	14	Good	Good	Mature	Medium	Medium	Medium	550	-	-	550	600	6.6	2.7	Major	77%	-	Remove
55	<i>Ficus hillii</i>	8	10	Good	Good	Mature	Medium	Medium	Medium	400	-	-	400	450	4.8	2.4	Major	84%	-	Remove
56	<i>Ficus hillii</i>	10	12	Good	Good	Mature	Medium	Medium	Medium	500	-	-	500	550	6.0	2.6	Major	77%	-	Remove
57	<i>Ficus hillii</i>	8	10	Good	Good	Mature	Medium	Medium	Medium	400	-	-	400	450	4.8	2.4	Major	85%	-	Remove
58	<i>Ficus hillii</i>	8	12	Good	Good	Mature	Medium	Medium	Medium	400	-	-	400	450	4.8	2.4	Major	85%	-	Remove
59	<i>Ficus hillii</i>	8	10	Good	Good	Mature	Medium	Medium	Medium	400	-	-	400	450	4.8	2.4	Major	84%	-	Remove

---

## 4 Discussion

### 4.1 Nil encroachment

A total of **3** trees will be subject to nil encroachment within the TPZ:

- **Retain:** A total of **3** trees are located outside of the proposed construction footprint. No impacts on these trees are foreseeable under the current proposal.
- **Remove:** No trees within the category of “nil encroachment” are proposed for removal.

### 4.2 Minor encroachment

A total of **4** trees will be subject to a minor encroachment of less than 10% within the TPZ:

- **Retain:** A total of **4** trees will be subject to a minor encroachment of less than 10% within the TPZ. Several site-specific mitigations for these encroachments have been outlined in the Tree Protection Plan. Under the current proposal, these trees can be successfully retained.
- **Remove:** No trees within the category of “minor encroachment” are proposed for removal.

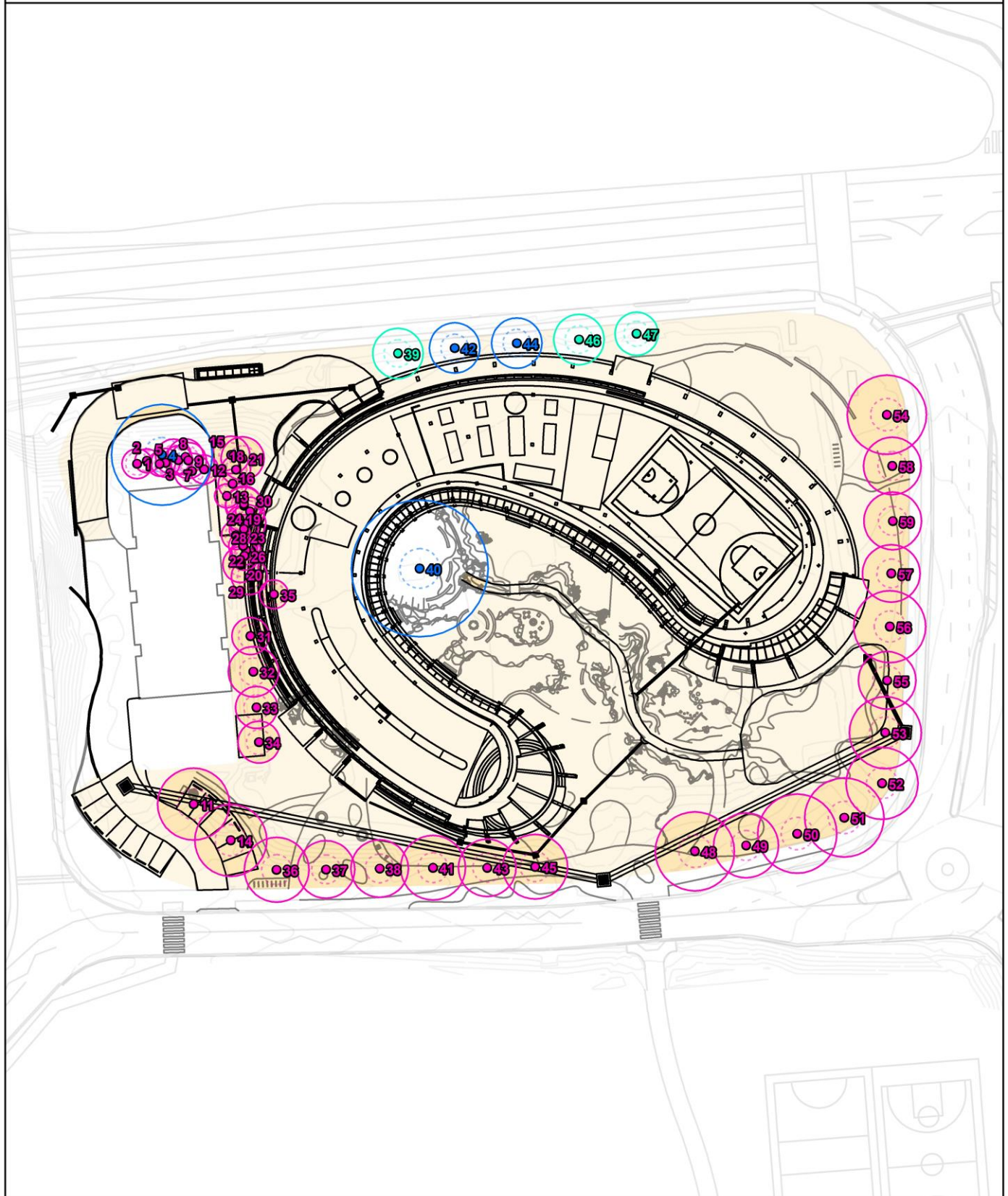
### 4.3 Major encroachment

A total of **52** trees will be subject to a major encroachment of greater than 10% within the TPZ:

- **Retain:** No trees within the category of “major encroachment” are proposed for retention.
- **Remove:** A total of **52** trees will be subject to a major encroachment of greater than 20% within the TPZ. Encroachment of greater than 20% can begin to impact the structural root zone (SRZ) and is more likely to compromise tree stability” (Costello, Watson, and Smiley (2017, p.21<sup>2</sup>). Impacts within the SRZ are not recommended as it may lead to the destabilisation and/or decline of the tree. These trees are located inside or directly adjacent to the proposed construction footprint and cannot be retained under the current proposal.

---

<sup>2</sup> Costello, L., Watson, G. and Smiley, E., 2017. Root Management. International Society of Arboriculture.



**Legend**

**The subject trees**

- Nil encroachment
- Minor encroachment
- Major encroachment

**Protection zones**

- ▭ TPZ (continuous line)
- ▭ SRZ (dashed line)

**Site features**

- Impact footprint
- Site plan (proposed)
- Site survey (existing)
- Contours





**Legend**

**The subject trees**

- Nil encroachment
- Minor encroachment
- Major encroachment

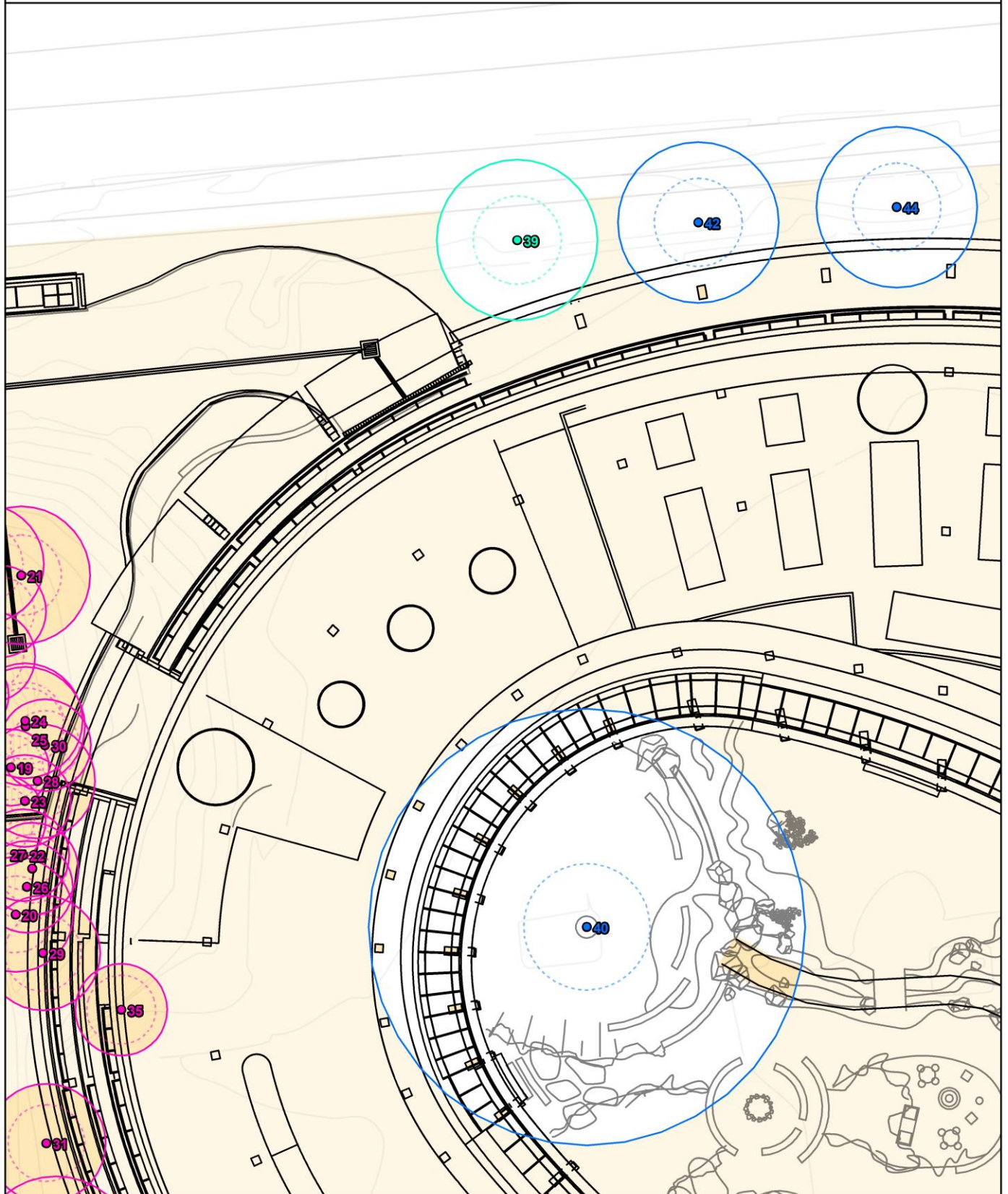
**Protection zones**

- TPZ (continuous line)
- SRZ (dashed line)

**Site features**

- Impact footprint
- Site plan (proposed)
- Site survey (existing)
- Contours





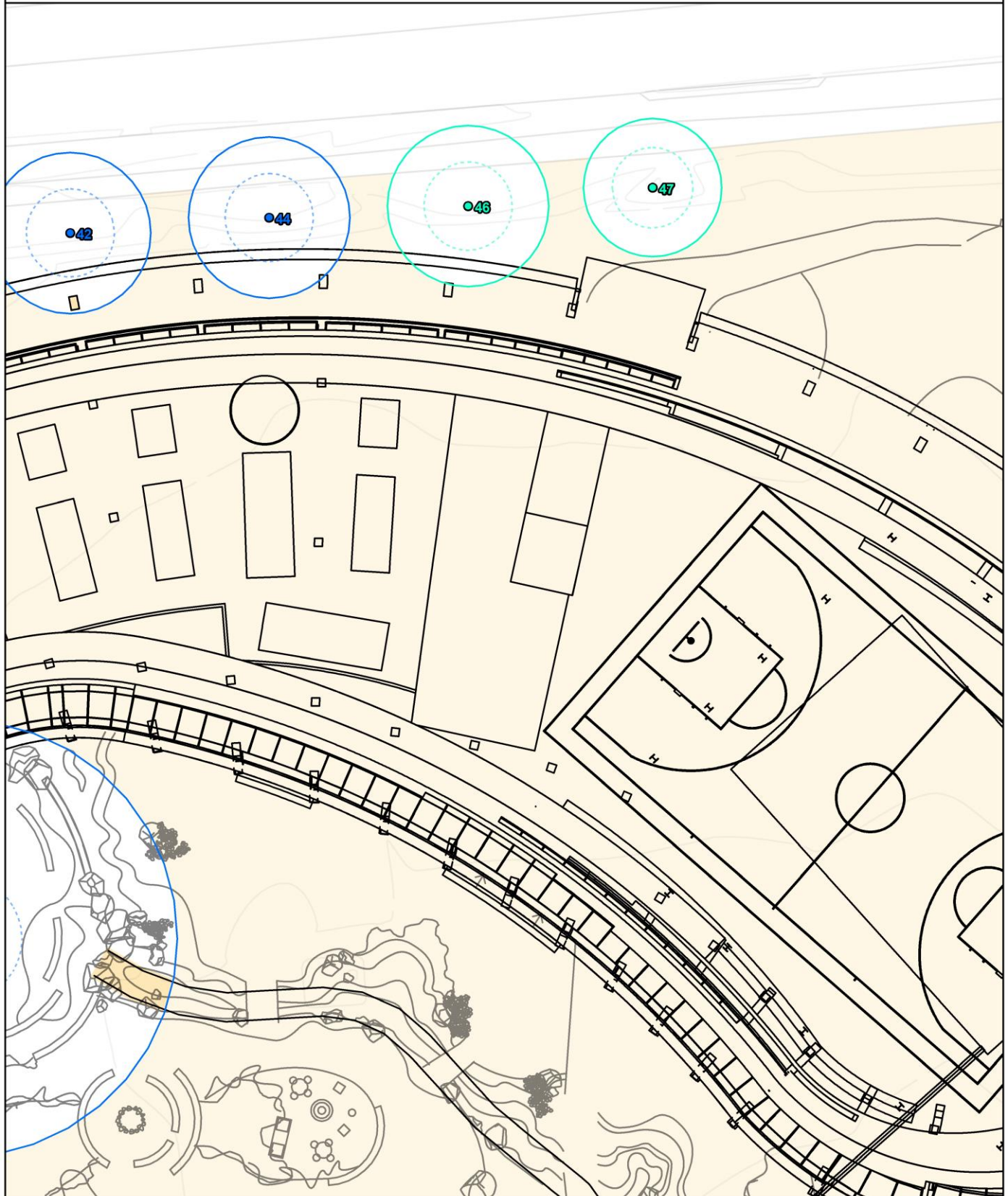
**Legend**

- The subject trees**
- Nil encroachment
  - Minor encroachment
  - Major encroachment

- Protection zones**
- TPZ (continuous line)
  - SRZ (dashed line)

- Site features**
- Impact footprint
  - Site plan (proposed)
  - Site survey (existing)
  - Contours





**Legend**

**The subject trees**

- Nil encroachment
- Minor encroachment
- Major encroachment

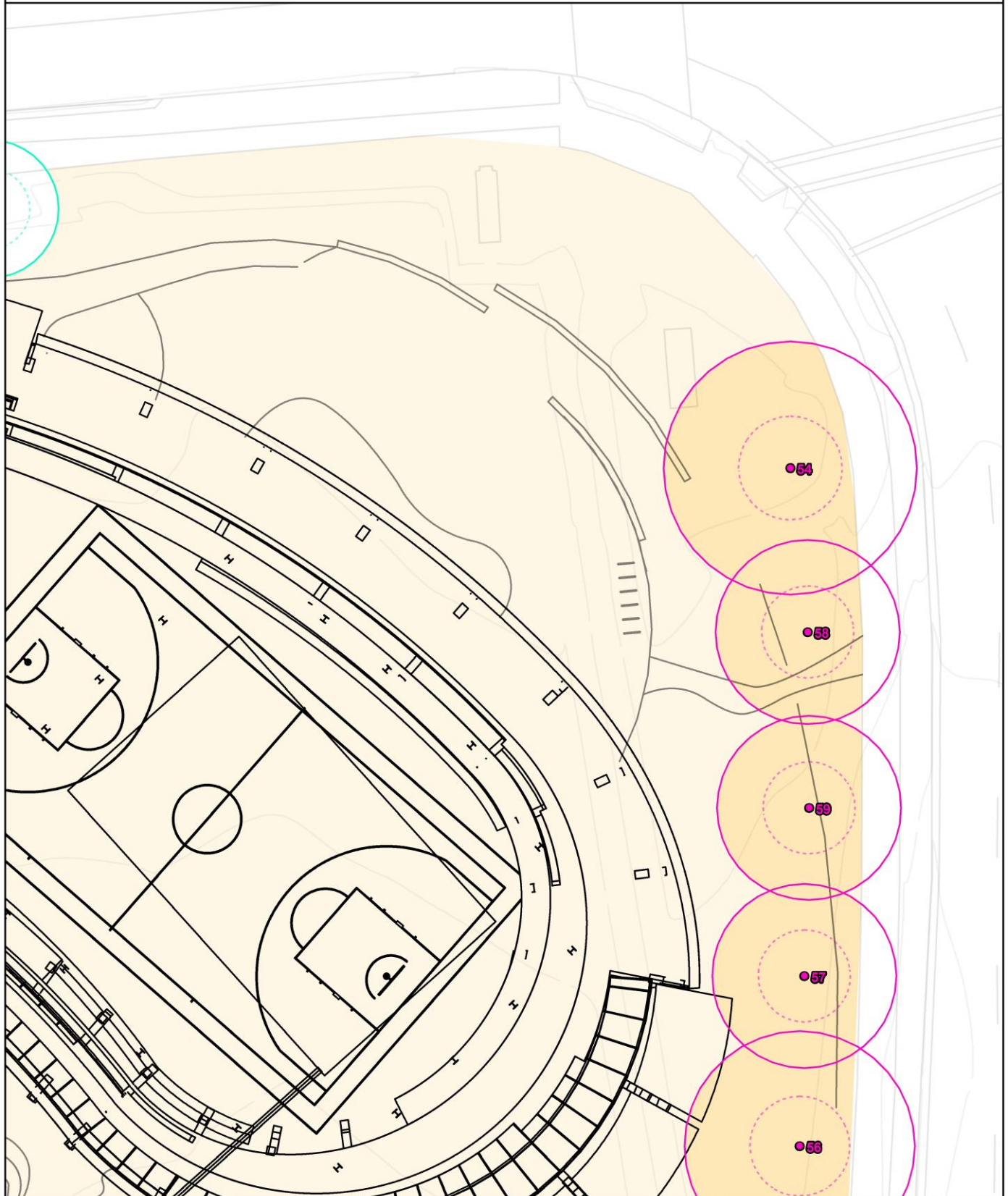
**Protection zones**

- ▭ TPZ (continuous line)
- ▭ SRZ (dashed line)

**Site features**

- Impact footprint
- Site plan (proposed)
- Site survey (existing)
- Contours





**Legend**

**The subject trees**

- Nil encroachment
- Minor encroachment
- Major encroachment

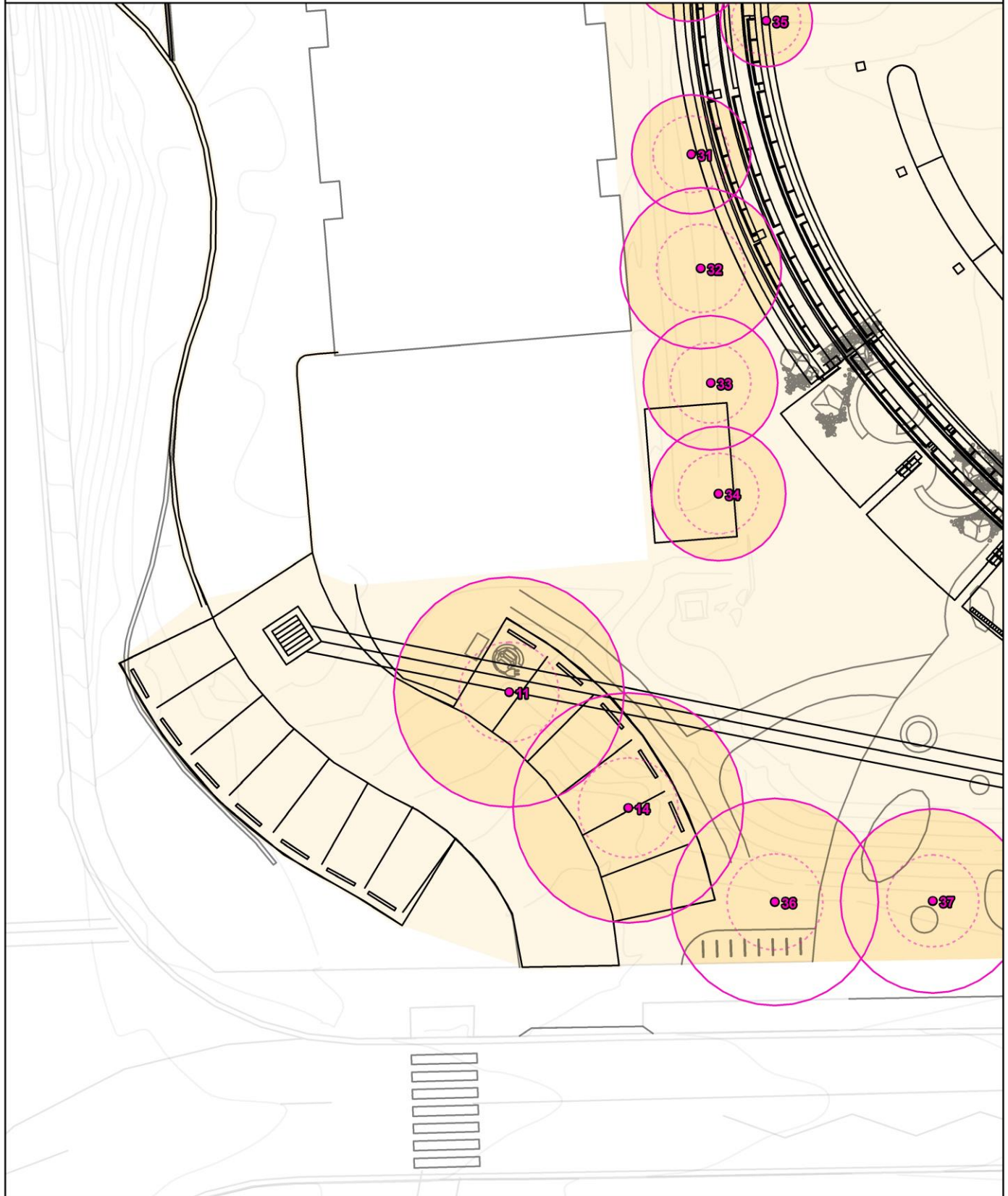
**Protection zones**

- TPZ (continuous line)
- SRZ (dashed line)

**Site features**

- Impact footprint
- Site plan (proposed)
- Site survey (existing)
- Contours





**Legend**

**The subject trees**

- Nil encroachment
- Minor encroachment
- Major encroachment

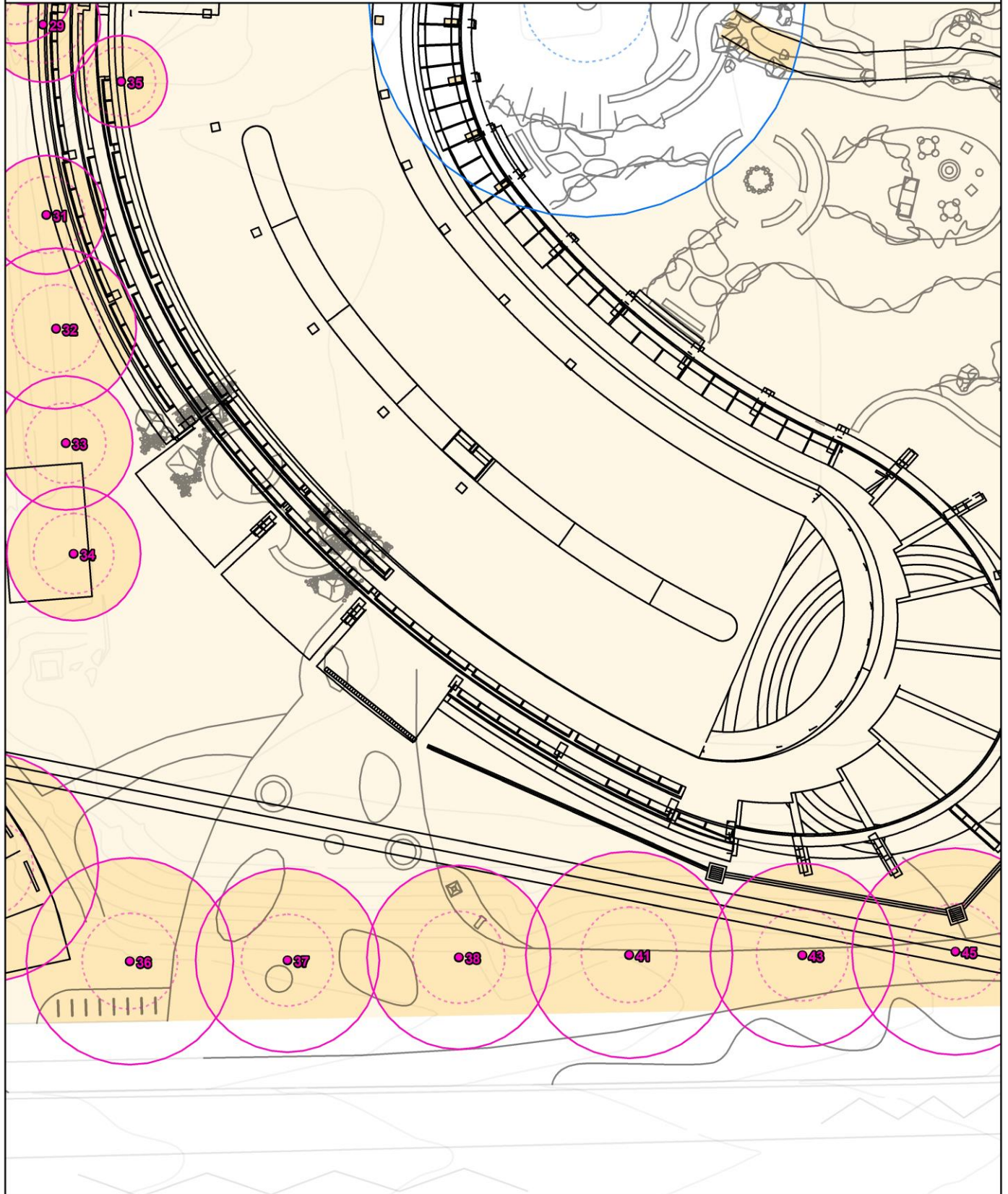
**Protection zones**

- ▭ TPZ (continuous line)
- ▭ SRZ (dashed line)

**Site features**

- Impact footprint
- Site plan (proposed)
- Site survey (existing)
- Contours





**Legend**

**The subject trees**

- Nil encroachment
- Minor encroachment
- Major encroachment

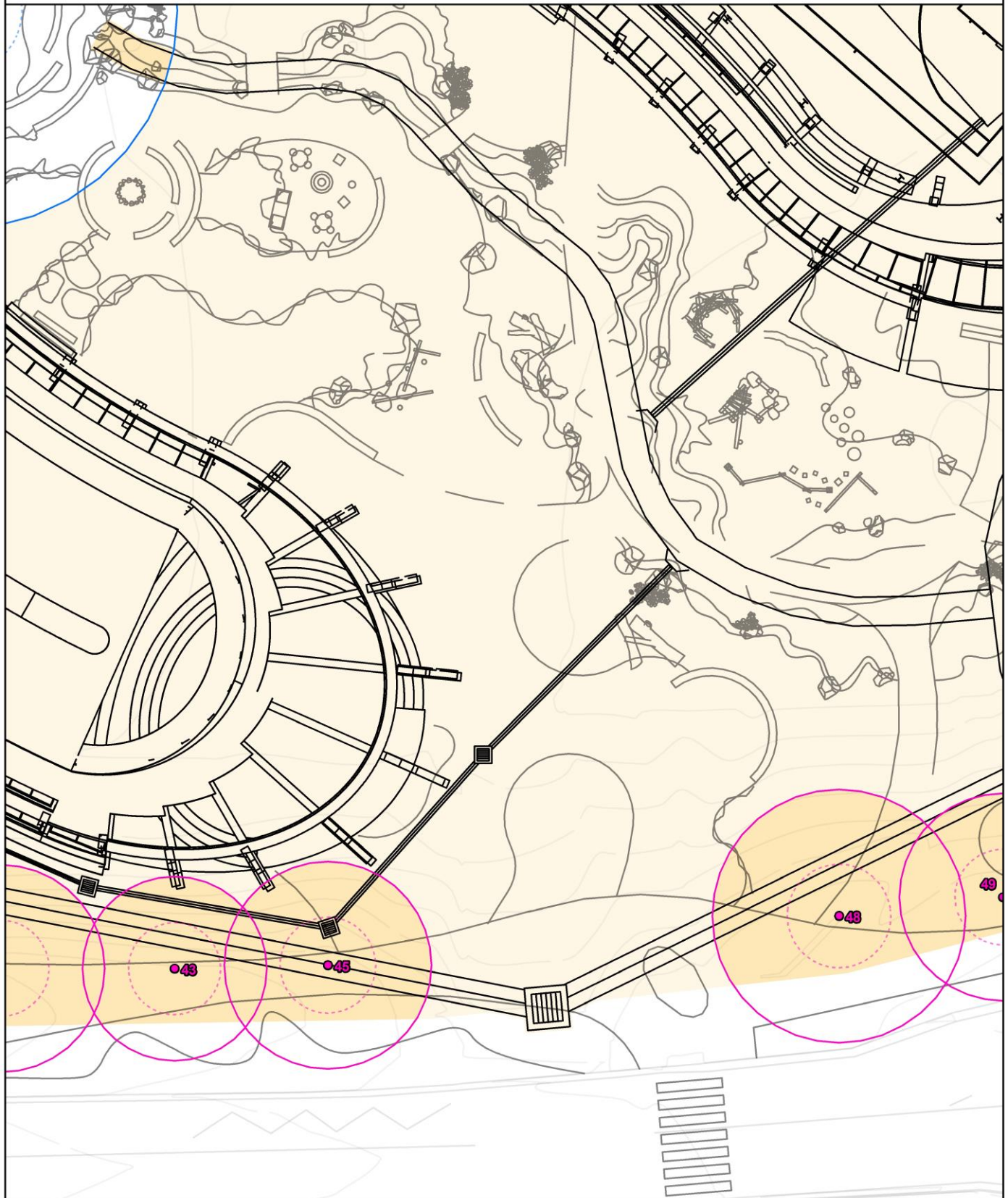
**Protection zones**

- ▭ TPZ (continuous line)
- ▭ SRZ (dashed line)

**Site features**

- Impact footprint
- Site plan (proposed)
- Site survey (existing)
- Contours





**Legend**

**The subject trees**

- Nil encroachment
- Minor encroachment
- Major encroachment

**Protection zones**

- ▭ TPZ (continuous line)
- ▭ SRZ (dashed line)

**Site features**

- Impact footprint
- Site plan (proposed)
- Site survey (existing)
- Contours





**Legend**

**The subject trees**

- Nil encroachment
- Minor encroachment
- Major encroachment

**Protection zones**

- TPZ (continuous line)
- SRZ (dashed line)

**Site features**

- Impact footprint
- Site plan (proposed)
- Site survey (existing)
- Contours



---

## 5 Tree Protection Plan (TPP)

### 5.1 Tree removal and retention

A summary of the total proposed tree removals is outlined below:

- **Retain:** A total of **7** trees are proposed for retention.
- **Remove:** A total of **52** trees are proposed for removal.

### 5.2 Tree removal

All tree removal work is to be carried out by an arborist with a minimum AQF Level 3 qualification in Arboriculture, in accordance with Australian Standard AS4373-2007, Pruning of Amenity Trees (AS4373), the Work Health and Safety Act 2011, and Work Health and Safety Regulations 2017.

### 5.3 Tree pruning

Minor vegetation trimming may be required to accommodate construction clearances. Standard pruning specifications are outlined below:

- Pruning must not exceed 10% of the overall canopy volume.
- No limbs greater than 150mm in diameter are to be removed.
- The final pruning cut shall be at the branch collar or growth point in accordance with AS4373.
- All tree pruning work is to be carried out by an arborist with a minimum AQF Level 3 qualification in Arboriculture, in accordance with AS4373 and the NSW WorkCover Code of Practice for the Amenity Tree Industry (1998).

If the proposed vegetation trimming does not meet the specifications outlined above, the project arborist must undertake an assessment of impacts on a case-by-case basis.

#### 5.4 Tree protection fencing

Tree protection fencing must be established at the locations shown in the TPP. Existing fencing, site hoarding, or structures (such as a wall or building) may be used as tree protection fencing, providing the TPZ remains isolated from the construction footprint. Tree protection fencing must be installed prior to site establishment and remain intact until the completion of works. Once erected, protective fencing must not be removed or altered without the approval of the project arborist. Specifications for the tree protection fencing are as follows:

- Temporary mesh panel fencing (minimum height of 1.8m).
- Installed prior to site establishment and remain intact until the completion of works.
- Protective fencing must not be removed or altered without the approval of the project arborist.
- Prominently signposted with 300mm x 450mm boards stating, "NO ACCESS - TREE PROTECTION ZONE."
- Certified and inspected by the project arborist.



If tree protection fencing is not practical due to site constraints, tree protection delineation must be installed as an alternative. Specifications for tree protection barriers are as follows:

- Star pickets spaced at 2m intervals,
- Connected by a continuous high-visibility barrier/hazard mesh or flagging rope.
- Maintained at a minimum height of 1m.

Where approved works are required within the TPZ, fencing may be setback to provide construction access. Trunk, branch, and ground protection shall be installed and must comply with AS4970. Any additional construction activities within the TPZ of the subject trees must be assessed and approved by the project arborist.

#### 5.5 Restricted activities within the TPZ

The TPZ is an area that is isolated from the work zone to ensure no disturbance or encroachment occurs in this zone. Activities generally excluded from the TPZ (unless otherwise approved under the development consent) include, but are not limited to:

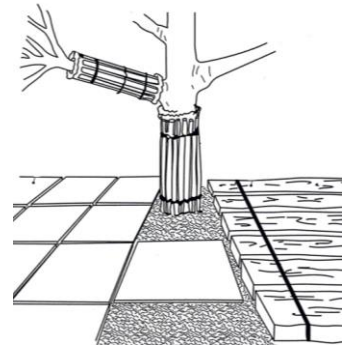
- Machine excavation and trenching.
- Ripping or cultivation of the soil.
- Storage of building materials, waste, and waste receptacles.
- Disposal of waste materials and chemicals, including paint, solvents, cement slurry, fuel, oil, and other toxic liquids.
- Movement and storage of plant, equipment, and vehicles.
- Soil level changes, including the placement of fill material.
- Mechanical removal of vegetation.
- Affixing of signage or hoardings to trees.
- Other physical damage to the trunk or root system.
- Any other activity that is likely to cause damage to the tree.

## 5.6 Trunk protection

Where the provision of tree protection fencing is impractical or must be temporarily removed, trunk protection shall be installed to avoid accidental mechanical damage.

Specifications for trunk protection are as follows:

- A thick layer of carpet underfelt, geotextile fabric, or similar wrapped around the trunk to a minimum height of 2m.
- 1.8m lengths of softwood timbers aligned vertically and spaced evenly around the trunk (with a small gap of approximately 50mm between the timbers).
- The timbers must be secured using galvanised hoop strap (aluminium strapping).



The timbers shall be wrapped around the trunk but not fixed to the tree, as this will cause injury/damage to the tree.

## 5.7 Ground protection

If temporary access for vehicle, plant, or machinery is required within the TPZ, ground protection shall be installed. The purpose of ground protection is to prevent root damage and soil compaction within the TPZ. Where possible, areas of the existing pavement shall be used as ground protection.

Specifications for light traffic access (<3.5 tonne) are as follows:

- Permeable membrane such as geotextile fabric.
- A layer of mulch or crushed rock (at a minimum depth of 100mm)

Specifications for heavy traffic access (>3.5 tonne) are as follows:

- Permeable membrane such as geotextile fabric.
- A layer of lightly compacted road base (at a minimum depth of 200mm)
- Geotextile fabric shall extend a minimum of 300mm beyond the edge of the road base.
- Heavy vehicle track mats, road plates, access mats, or similar.

Pedestrian, vehicular, and machinery access within the TPZ shall be restricted solely to areas where ground protection has been installed.

## 5.8 Demolition

The demolition of all existing structures inside or directly adjacent to the TPZ of trees to be retained must be undertaken in consultation with the project arborist. Any machinery is to work from inside the footprint of the existing structures or outside the TPZ, to minimise soil disturbance and compaction. If it is not feasible to locate demolition machinery outside the TPZ of trees to be retained, ground protection will be required. The demolition should be undertaken inwards into the footprint of the existing structures, sometimes referred to as the 'top-down, pull back' method.

## 5.9 Excavations

The project arborist must supervise and certify that all excavations and root pruning are in accordance with AS4373 and AS4970. All excavations (including root investigations) within the TPZ must be carried out using tree-sensitive methods under the supervision of the project arborist (see **Tree Protection Plan**). These methods may include:

- **Manual excavation:** Use of hand tools such as spades, trowels, and brushes.
- **Air spade:** Use of a pressurised air device that blows the soil away and leaves roots intact.
- **Hydro-vacuum excavation:** Use of pressurised water to remove soil from around roots.

The recommended techniques for common types of excavations have been outlined below:

- **Continuous strip footings:** Manual excavation, air spade, or hydro-vacuum is utilised excavation lines within the TPZ prior to the commencement of mechanical excavation. Excavation should be a depth of 1 metre (or to unfavourable root growth conditions such as bedrock or heavy clay, if agreed by the project arborist). Any conflicting roots shall be pruned using clean, sharp secateurs or a pruning saw to ensure a clean cut, free from tears. All root pruning must be documented and carried out by the project arborist. After all root pruning is completed, machine excavation is permitted within the footprint of the structure.
- **Post or pier footings:** Manual excavation, air spade, or hydro-vacuum is utilised at the location of pier footings within the TPZ. Any conflicting roots shall be pruned using clean, sharp secateurs or a pruning saw to ensure a clean cut, free from tears. All root pruning must be documented and carried out by the project arborist. After all root pruning is completed, machine excavation is permitted within the footprint of the structure.

No over-excavation, battering, or benching shall be undertaken beyond the footprint of any structure unless approved by the project arborist.

## 5.10 Underground services

Where possible, underground services should be routed outside of the TPZ. If underground services need to be installed within the TPZ, they must be installed using tree-sensitive excavation methods under the supervision of the project arborist. Alternatively, boring methods such as horizontal directional drilling (HDD) may be used for underground service installation, providing the installation is at a minimum depth of 800mm below grade. Excavations for entry/exit pits must be located outside the TPZ.

## 5.11 Root pruning

Any conflicting roots greater than 50mm in diameter identified during the supervised excavations shall be pruned using clean, sharp secateurs or a pruning saw to ensure a clean cut, free from tears. All root pruning (>50mm) must be documented and carried out by the project arborist.

### 5.12 Site inspections

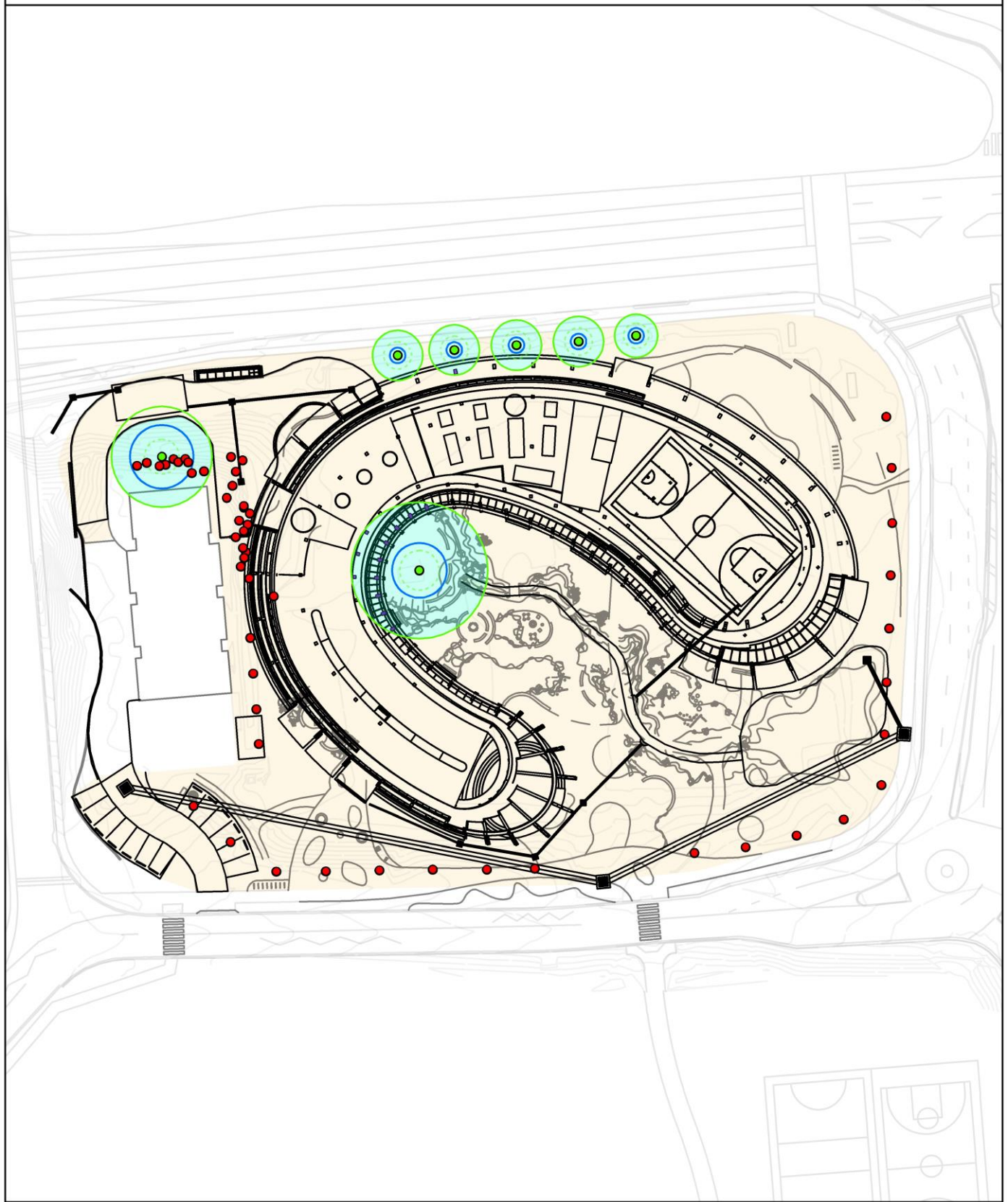
In accordance with AS4970, inspections must be conducted by the project arborist at the following key project stages:

- Prior to any work commencing on-site (including demolition, earthworks, or site clearing) and following the installation of tree protection.
- During any excavations, building works, and any other activities carried out within the TPZ of any tree to be retained & protected.
- A minimum of once per 12 weeks (every 3 months) during the construction phase for trees with a major encroachment within the TPZ.
- After all major construction has ceased, following the removal of tree protection.

It shall be the responsibility of the project manager to notify the project arborist prior to any works within the TPZ of any protected tree at a minimum of 48 hours' notice. To ensure the tree protection plan is implemented, hold points have been specified in the schedule of work (**Table 4**).

**Table 4: Schedule of work**

Construction stage	Hold point	Description
Pre-construction	1	Tree protection (for trees that will be retained) shall be installed prior to demolition and site establishment. This may include the mulching of areas within the TPZ. The project arborist shall inspect and certify tree protection.
During Construction	2	Project arborist to supervise and document any significant works carried out within the TPZ of trees to be retained.
	3	Scheduled inspection of trees by the project arborist should be undertaken approximately every 12 weeks (3 months) during the construction period.
Post Construction	4	Final inspection of trees by project arborist.



**Legend**

**The subject trees**

- Retain
- Remove

**Protection zones**

- ▭ TPZ (continuous line)
- ▭ SRZ (dashed line)

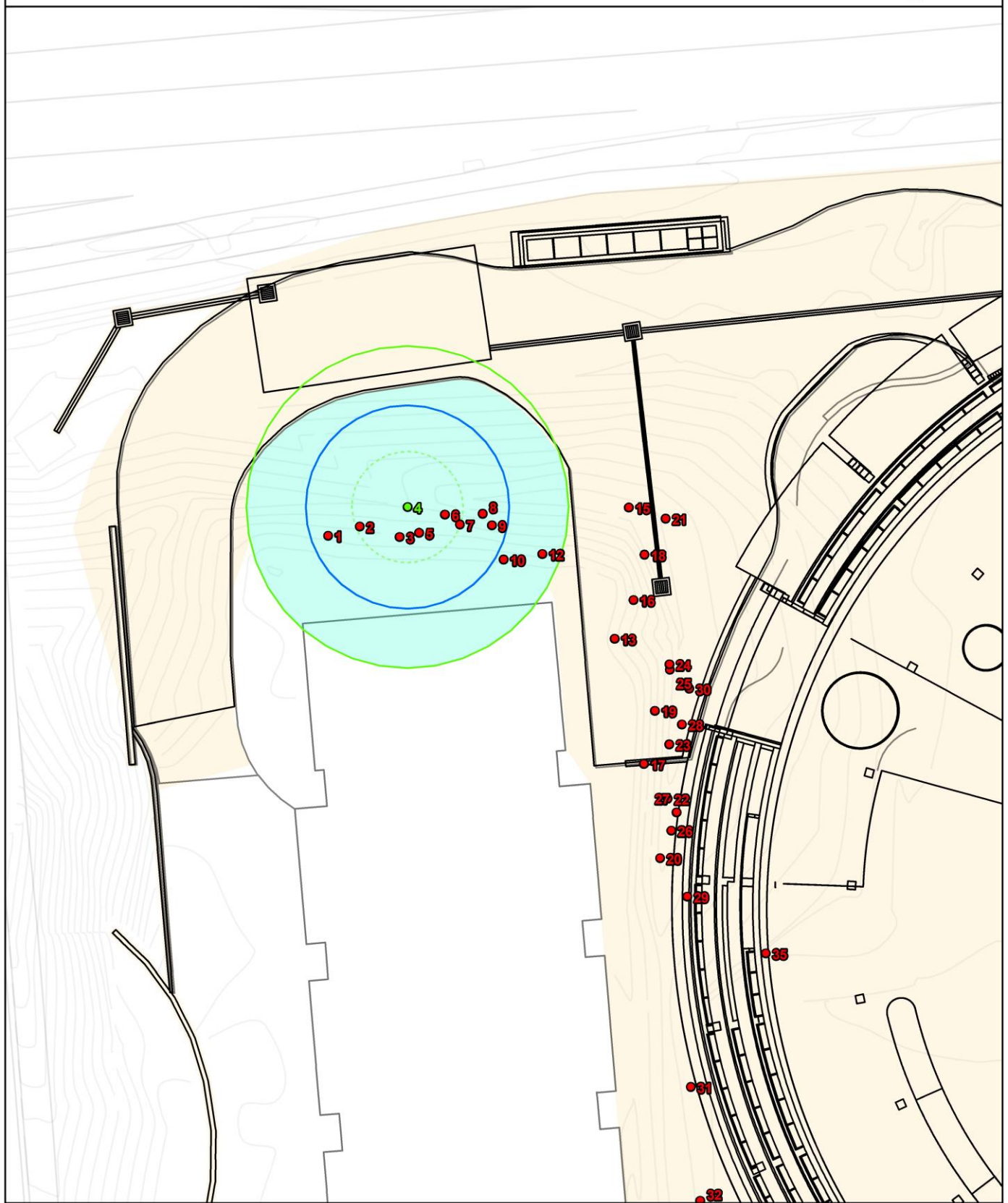
**Site features**

- Impact footprint
- Site plan (proposed)
- Site survey (existing)
- Contours

**Tree protection measures**

- Tree protection fence
- Excavation must not exceed 150mm
- Arborist to supervise excavations within the TPZ





**Legend**

**The subject trees**

- Retain
- Remove

**Protection zones**

- ▭ TPZ (continuous line)
- ▭ SRZ (dashed line)

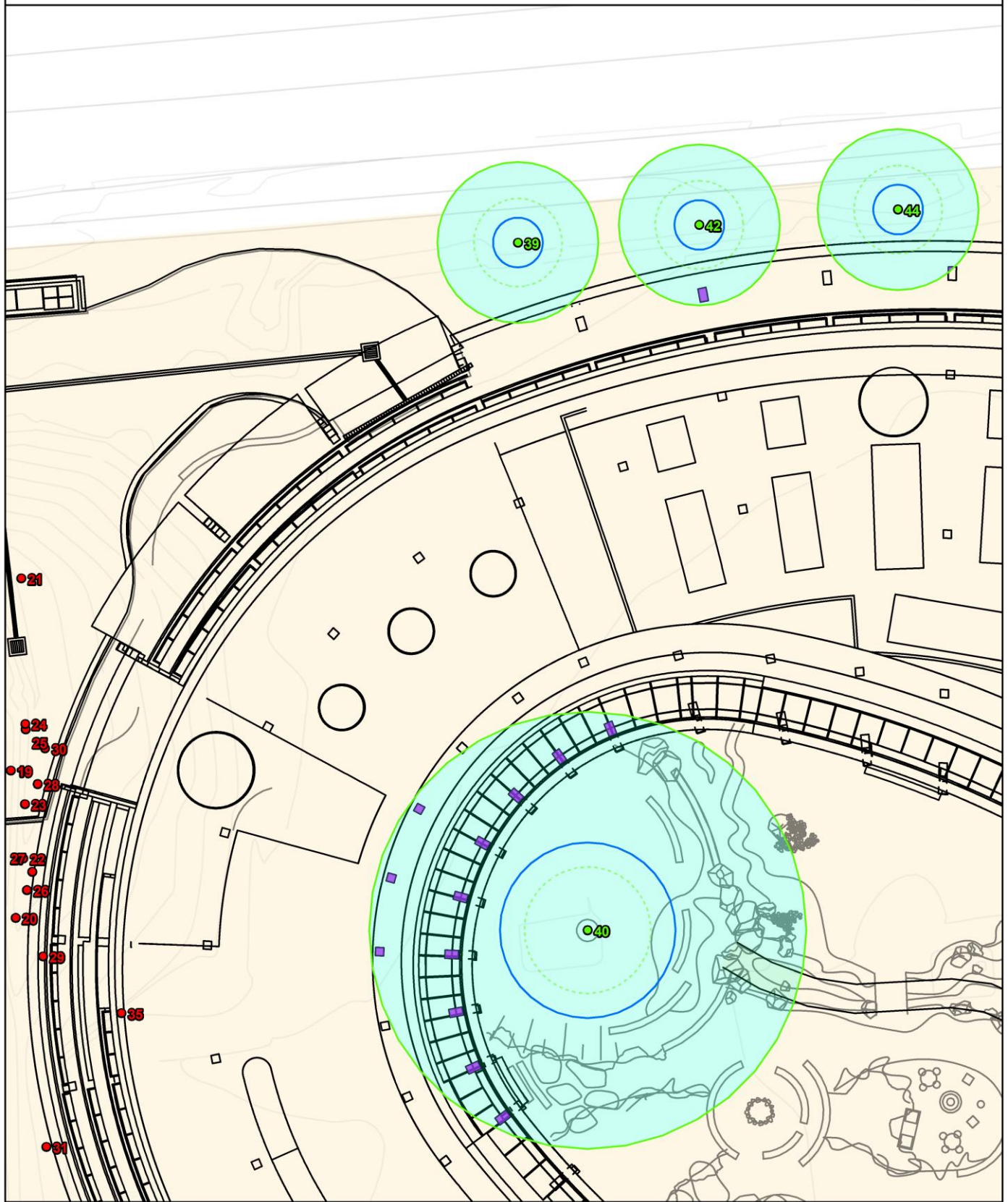
**Site features**

- ▭ Impact footprint
- Site plan (proposed)
- Site survey (existing)
- Contours

**Tree protection measures**

- Tree protection fence
- ▭ Excavation must not exceed 150mm
- ▭ Arborist to supervise excavations within the TPZ

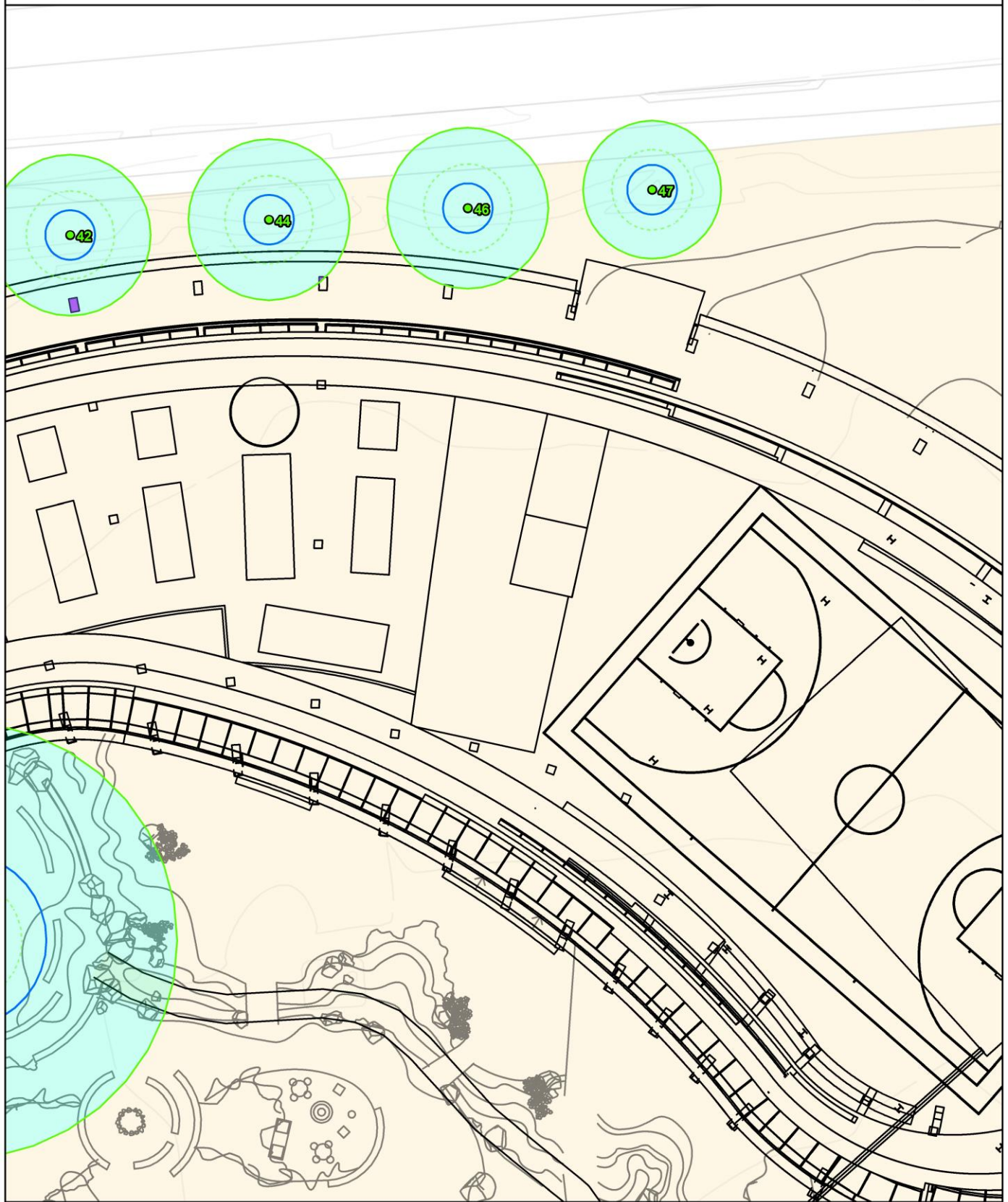




**Legend**

- |  |   |  |  |
|--|---|--|--|
| <p><b>The subject trees</b></p> <ul style="list-style-type: none"> <li>● Retain</li> <li>● Remove</li> </ul> | <p><b>Protection zones</b></p> <ul style="list-style-type: none"> <li>▭ TPZ (continuous line)</li> <li>⋯ SRZ (dashed line)</li> </ul> | <p><b>Site features</b></p> <ul style="list-style-type: none"> <li>■ Impact footprint</li> <li>— Site plan (proposed)</li> <li>— Site survey (existing)</li> <li>— Contours</li> </ul> | <p><b>Tree protection measures</b></p> <ul style="list-style-type: none"> <li>— Tree protection fence</li> <li>■ Excavation must not exceed 150mm</li> <li>■ Arborist to supervise excavations within the TPZ</li> </ul> |
|--|---|--|--|





**Legend**

**The subject trees**

- Retain
- Remove

**Protection zones**

- TPZ (continuous line)
- SRZ (dashed line)

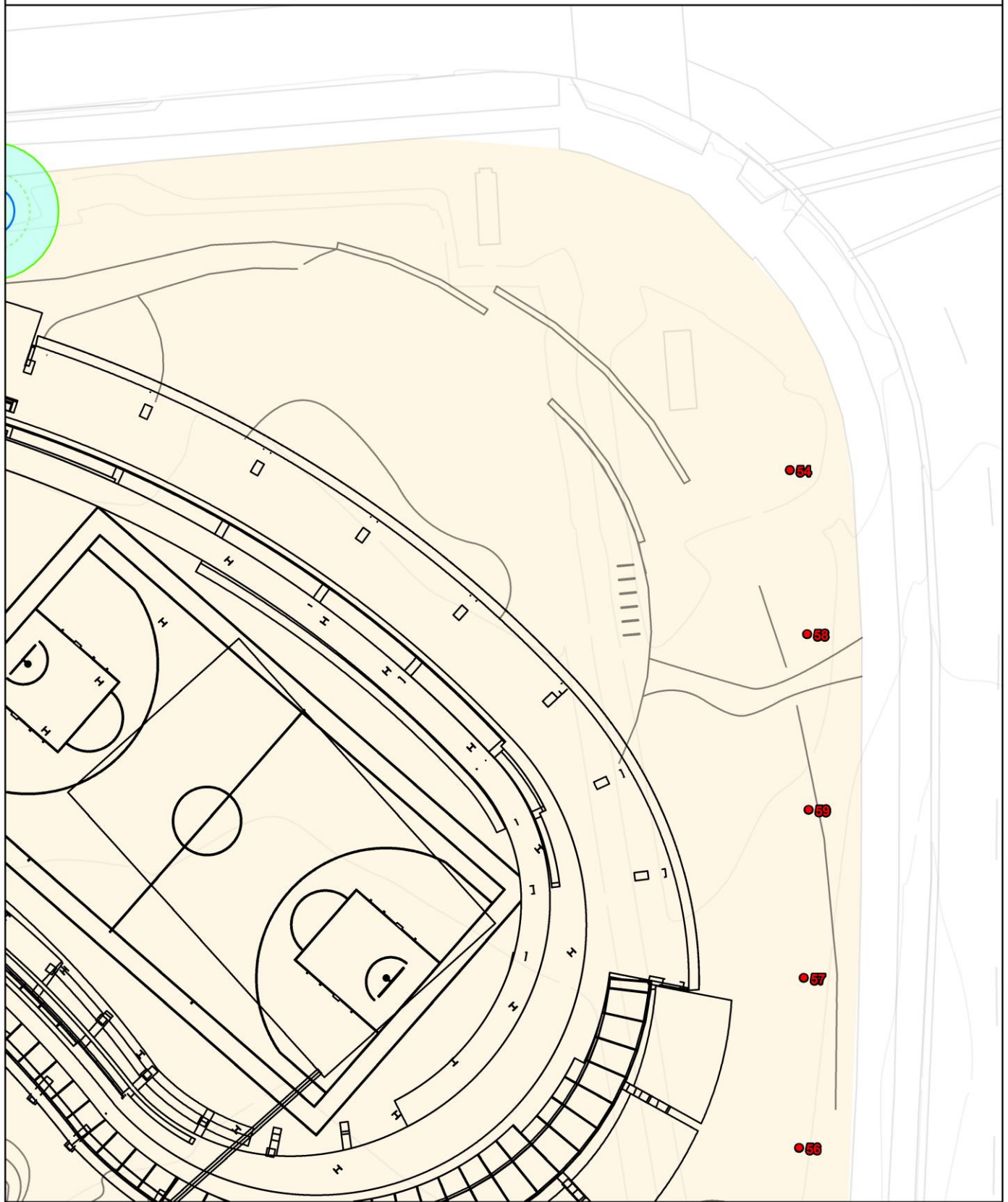
**Site features**

- Impact footprint
- Site plan (proposed)
- Site survey (existing)
- Contours

**Tree protection measures**

- Tree protection fence
- Excavation must not exceed 150mm
- Arborist to supervise excavations within the TPZ





**Legend**

**The subject trees**

- Retain
- Remove

**Protection zones**

- TPZ (continuous line)
- SRZ (dashed line)

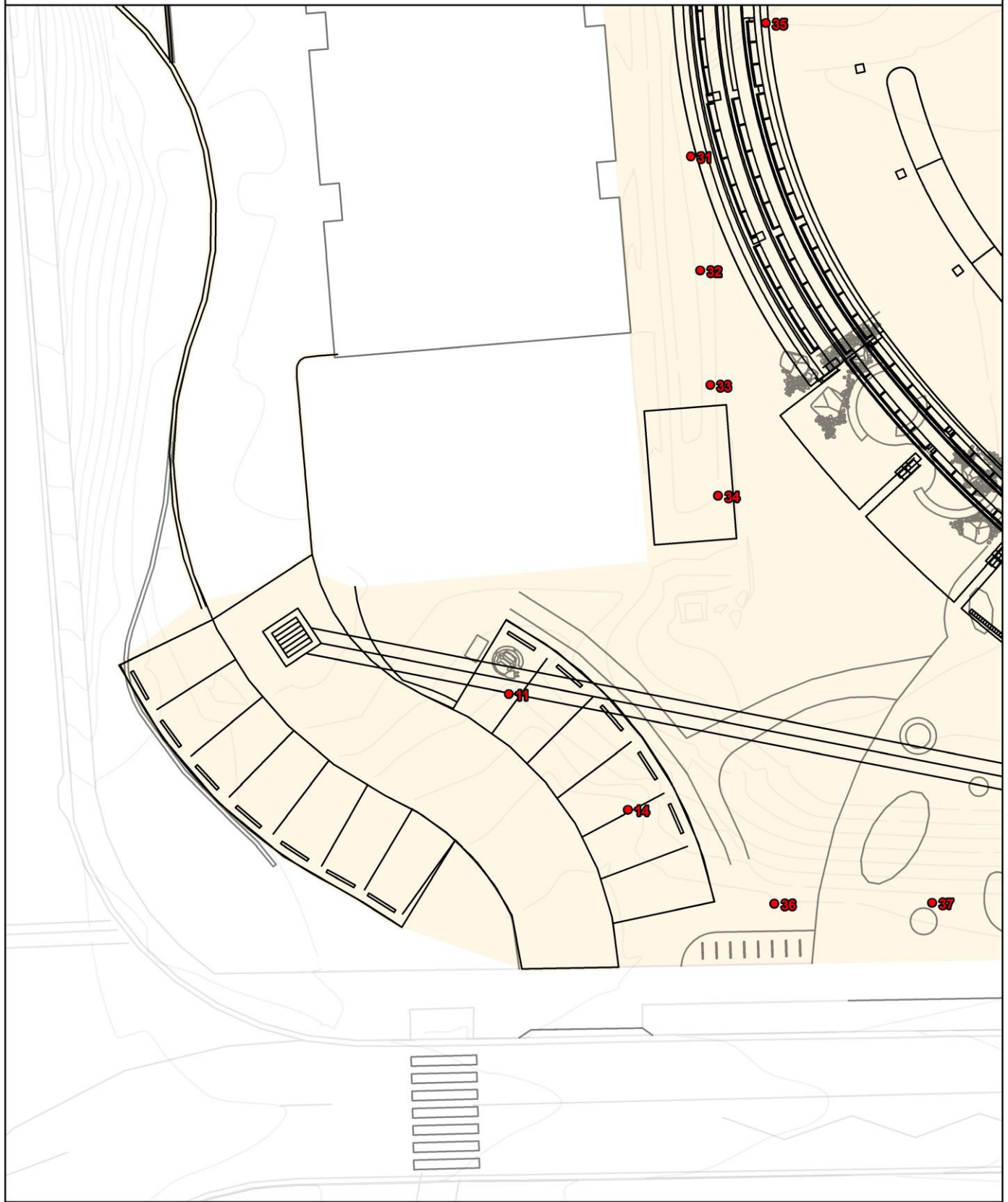
**Site features**

- Impact footprint
- Site plan (proposed)
- Site survey (existing)
- Contours

**Tree protection measures**

- Tree protection fence
- Excavation must not exceed 150mm
- Arborist to supervise excavations within the TPZ





**Legend**

**The subject trees**

- Retain
- Remove

**Protection zones**

- TPZ (continuous line)
- SRZ (dashed line)

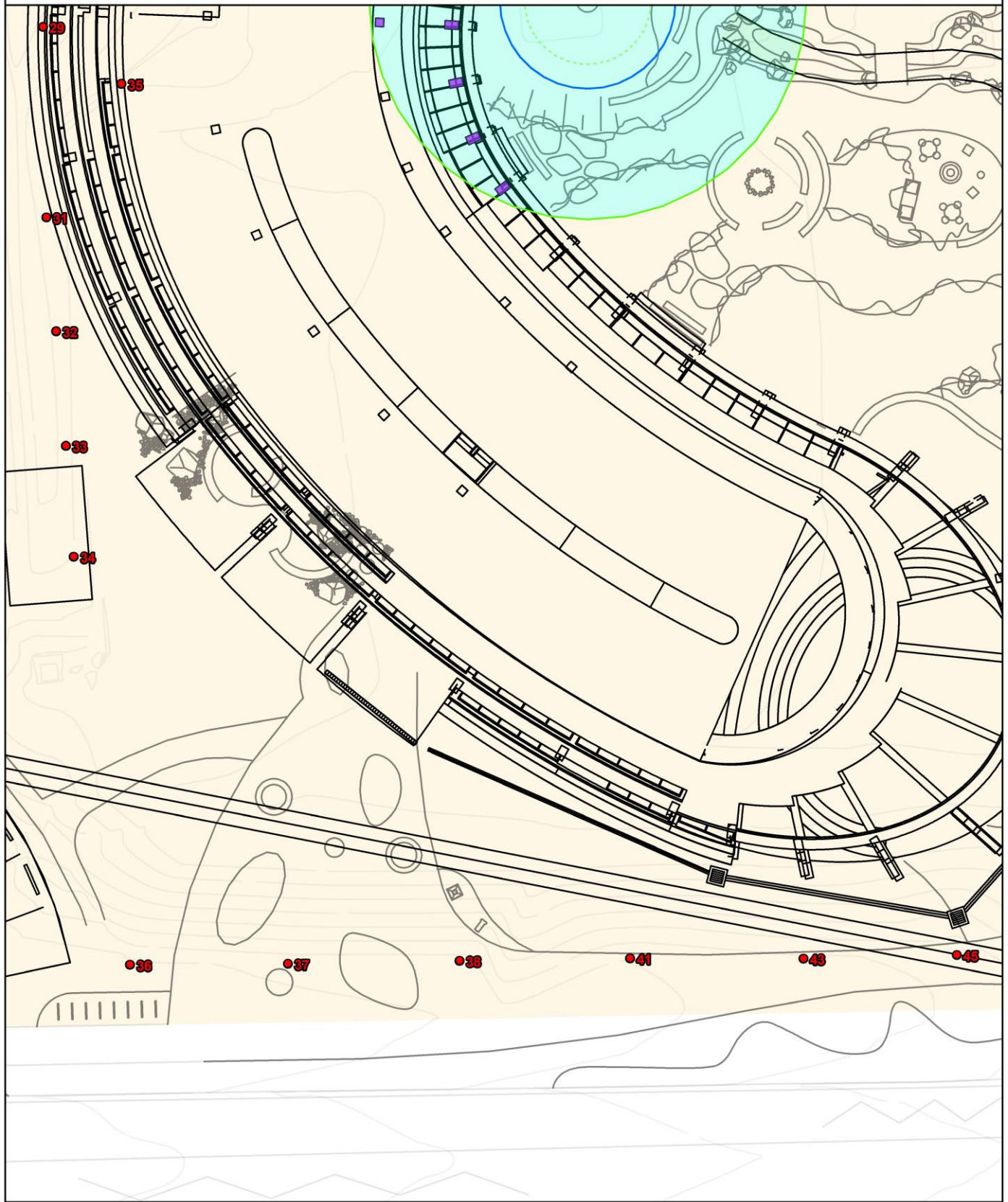
**Site features**

- Impact footprint
- Site plan (proposed)
- Site survey (existing)
- Contours

**Tree protection measures**

- Tree protection fence
- Excavation must not exceed 150mm
- Arborist to supervise excavations within the TPZ





**Legend**

**The subject trees**

- Retain
- Remove

**Protection zones**

- TPZ (continuous line)
- SRZ (dashed line)

**Site features**

- Impact footprint
- Site plan (proposed)
- Site survey (existing)
- Contours

**Tree protection measures**

- Tree protection fence
- Excavation must not exceed 150mm
- Arborist to supervise excavations within the TPZ





**Legend**

**The subject trees**

- Retain
- Remove

**Protection zones**

- ▭ TPZ (continuous line)
- ▭ SRZ (dashed line)

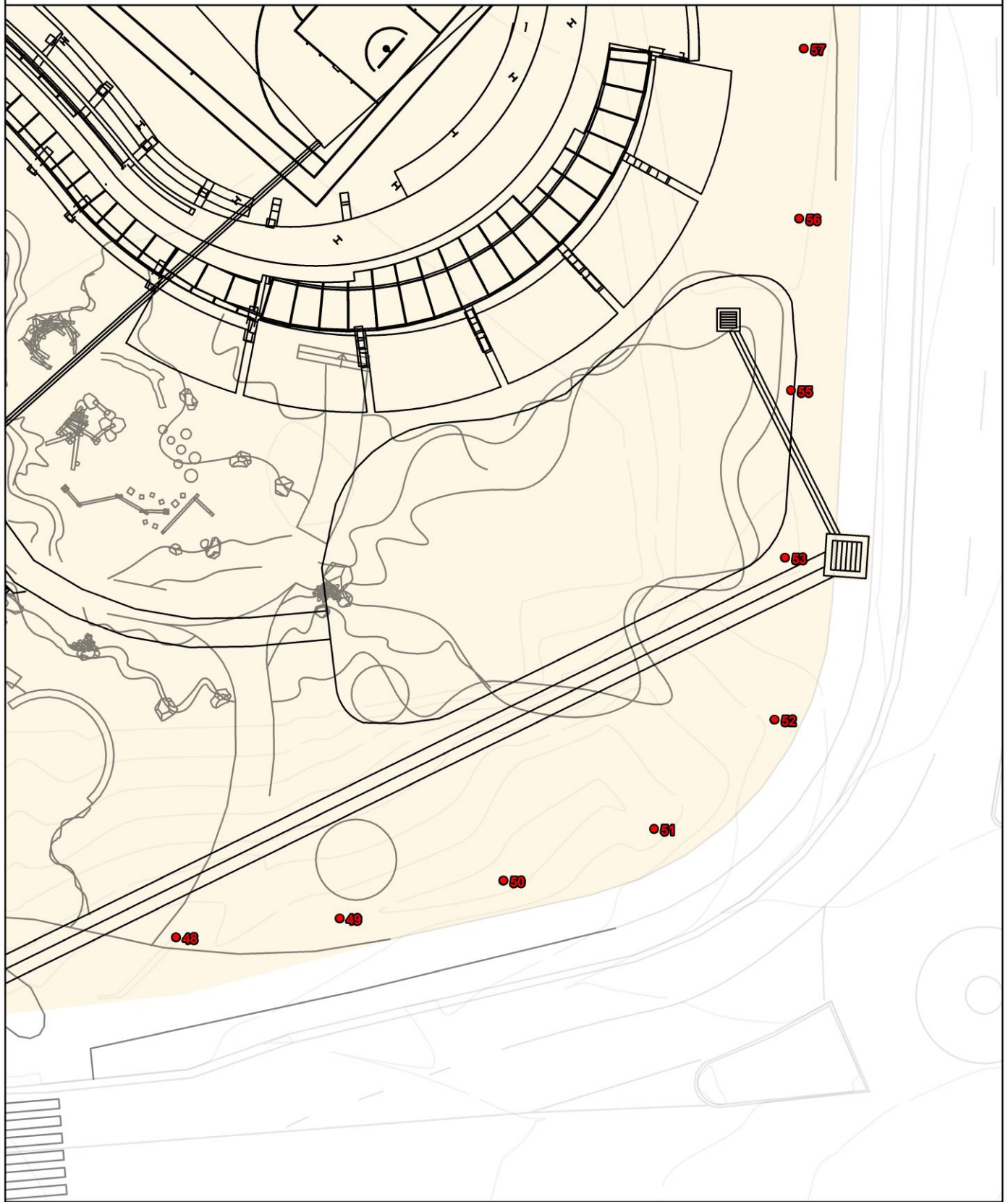
**Site features**

- Impact footprint
- Site plan (proposed)
- Site survey (existing)
- Contours

**Tree protection measures**

- Tree protection fence
- Excavation must not exceed 150mm
- Arborist to supervise excavations within the TPZ





**Legend**

**The subject trees**

- Retain
- Remove

**Protection zones**

- ▭ TPZ (continuous line)
- - - SRZ (dashed line)

**Site features**

- Impact footprint
- Site plan (proposed)
- Site survey (existing)
- Contours

**Tree protection measures**

- Tree protection fence
- Excavation must not exceed 150mm
- Arborist to supervise excavations within the TPZ



---

## References

Australian Standard, AS 4970-2009, Protection of Trees on Development Sites

Australian Standard, AS 4373-2007, Pruning of Amenity Trees.

Costello, L., Watson, G. and Smiley, E., 2017. Root Management. International Society of Arboriculture.

IACA, 2010, IACA Significance of a Tree, Assessment Rating System (STARS), Institute of Australian Consulting Arboriculturists, Australia, [www.iaca.org.au](http://www.iaca.org.au)

Mattheck, C. (2007). Updated field guide for visual tree assessment. Karlsruhe: Forschungszentrum Karlsruhe.

Mattheck, C., Bethge, K. and Weber, K. (2015). The body language of trees. Karlsruhe: Karlsruher Inst. für Technologie.

Mattheck, C., Lonsdale, D. and Breloer, H. (1994). The body language of trees. London: H.M.S.O.

Roberts, J., Jackson, N. and Smith, D. (2006). Tree roots in the built environment.

---

## Appendix I - STARS© assessment matrix

The retention value of a tree or group of trees is determined using a combination of environmental, cultural, physical, and social values.

- **Low:** These trees are not considered important for retention, nor require special works or design modification to be implemented for their retention.
- **Medium:** These trees are moderately important for retention. Their removal should only be considered if adversely affecting the proposed building/works, and all other alternatives have been considered and exhausted.
- **High:** These trees are considered important for retention and should be retained and protected. Design modification or re-location of building/s should be considered to accommodate the setbacks as prescribed by Australian Standard, AS4970-2009 Protection of trees on development sites.

This tree retention assessment has been undertaken in accordance with the Institute of Australian Consulting Arboriculturalists (IACA) Significance of a Tree, Assessment Rating System (STARS). The system uses a scale of High, Medium, and Low significance in the landscape. Once the landscape significance of a tree has been defined, the retention value can be determined. Each tree must meet a minimum of three (3) assessment criteria to be classified within a category.

<b>Tree Significance - Assessment Criteria</b>		
<b>Low Significance</b>	<b>Medium Significance</b>	<b>High Significance</b>
<p>The tree is in fair-poor condition and good or low vigour.</p> <p>The tree has form atypical of the species</p> <p>The tree is not visible or is partly visible from the surrounding properties or obstructed by other vegetation or buildings</p> <p>The tree provides a minor contribution or has a negative impact on the visual character and amenity of the local area</p> <p>The tree is a young specimen which may or may not have reached dimensions to be protected by local Tree Preservation Orders or similar protection mechanisms and can easily be replaced with a suitable specimen</p> <p>The tree's growth is severely restricted by above or below ground influences, unlikely to reach dimensions typical for the taxa in situ – tree is inappropriate to the site conditions</p> <p>The tree is listed as exempt under the provisions of the local Council Tree Preservation Order or similar protection mechanisms</p> <p>The tree has a wound or defect that has the potential to become structurally unsound.</p>	<p>The tree is in fair to good condition</p> <p>The tree has form typical or atypical of the species</p> <p>The tree is a planted locally indigenous or a common species with its taxa commonly planted in the local area</p> <p>The tree is visible from surrounding properties, although not visually prominent as partially obstructed by other vegetation or buildings when viewed from the street</p> <p>The tree provides a fair contribution to the visual character and amenity of the local area</p> <p>The tree's growth is moderately restricted by above or below ground influences, reducing its ability to reach dimensions typical for the taxa in situ</p>	<p>The tree is in good condition and good vigour</p> <p>The tree has a form typical for the species</p> <p>The tree is a remnant or is a planted locally indigenous specimen and/or is rare or uncommon in the local area or of botanical interest or of substantial age.</p> <p>The tree is listed as a heritage item, threatened species or part of an endangered ecological community or listed on council's significant tree register</p> <p>The tree is visually prominent and visible from a considerable distance when viewed from most directions within the landscape due to its size and scale and makes a positive contribution to the local amenity.</p> <p>The tree supports social and cultural sentiments or spiritual associations, reflected by the broader population or community group, or has commemorative values.</p> <p>The tree's growth is unrestricted by above and below ground influences, supporting its ability to reach dimensions typical for the taxa in situ – tree is appropriate to the site conditions.</p>
<b>Environmental Pest / Noxious Weed</b>		
<p>The tree is an environmental pest species due to its invasiveness or poisonous/allergenic properties.</p> <p>The tree is a declared noxious weed by legislation</p>		
<b>Hazardous / Irreversible Decline</b>		
<p>The tree is structurally unsound and/or unstable and is considered potentially dangerous.</p> <p>The tree is dead, or is in irreversible decline, or has the potential to fail or collapse in full or part in the immediate to short term.</p>		

**Useful Life Expectancy - Assessment Criteria**

Remove	Short	Medium	Long
<p>Trees with a high level of risk that would need removing within the next 5 years.</p> <p>Dead trees.</p> <p>Trees that should be removed within the next 5 years.</p> <p>Dying or suppressed or declining trees through disease or inhospitable conditions.</p> <p>Dangerous trees through instability or recent loss of adjacent trees.</p> <p>Dangerous trees through structural defects, including cavities, decay, included bark, wounds, or poor form.</p> <p>Damaged trees that considered unsafe to retain.</p> <p>Trees that could live for more than 5 years but may be removed to prevent interference with more suitable individuals or to provide space for new planting.</p> <p>Trees that will become dangerous after removal of other trees for the reasons.</p>	<p>Trees that appear to be retainable with an acceptable level of risk for 5-15 years.</p> <p>Trees that may only live between 5 and 15 more years.</p> <p>Trees that may live for more than 15 years but would be removed to allow the safe development of more suitable individuals.</p> <p>Trees that may live for more than 15 years but would be removed during the course of normal management for safety or nuisance reasons.</p> <p>Storm damaged or defective trees that require substantial remedial work to make safe and are only suitable for retention in the short term.</p>	<p>Trees that appear to be retainable with an acceptable level of risk for 15-40 years.</p> <p>Trees that may only live between 15 and 40 more years.</p> <p>Trees that may live for more than 40 years but would be removed to allow the safe development of more suitable individuals.</p> <p>Trees that may live for more than 40 years but would be removed during the course of normal management for safety or nuisance reasons.</p> <p>Storm damaged or defective trees that require substantial remedial work to make safe and are only suitable for retention in the short term.</p>	<p>Trees that appear to be retainable with an acceptable level of risk for more than 40 years.</p> <p>Structurally sound trees located in positions that can accommodate future growth.</p> <p>Storm damaged or defective trees that could be made suitable for retention in the long term by remedial tree surgery.</p> <p>Trees of special significance for historical, commemorative, or rarity reasons that would warrant extraordinary efforts to secure their long-term retention.</p>

		Tree Significance				
		High Significance	Medium Significance	Low Significance	Environmental Pest / Noxious Weed	Hazardous / Irreversible Decline
Useful Life Expectancy	Long >40 years					
	Medium 15-40 years					
	Short <1-15 years					
Dead						

Legend for Matrix Assessment	
	<b>Priority for retention (High):</b> These trees are considered important for retention and should be retained and protected. Design modification or re-location of building/s should be considered to accommodate the setbacks as prescribed by the Australian Standard AS4970 Protection of trees on development sites. Tree sensitive construction measures must be implemented if works are to proceed within the Tree Protection Zone.
	<b>Consider for retention (Medium):</b> These trees may be retained and protected. These are considered less critical; however, their retention should remain priority with the removal considered only if adversely affecting the proposed building/works, and all other alternatives have been considered and exhausted.
	<b>Consider for removal (Low):</b> These trees are not considered important for retention, nor require special works or design modification to be implemented for their retention.
	<b>Priority for removal (Low):</b> These trees are not considered important for retention, nor require special works or design modification to be implemented for their retention.

**Reference**

IACA, 2010, IACA Significance of a Tree, Assessment Rating System (STARS)  
 Institute of Australian Consulting Arboriculturists  
 Australia, www.iaca.org.au

