

# Piambong Wind Farm

## Preliminary Wind Farm Noise Impact Assessment

06-Nov-2023  
Doc No. 60670482-RPNV-01\_G

# Piambong Wind Farm

## Preliminary Wind Farm Noise Impact Assessment

Client: Wind Power Development Australia Pty Ltd

ABN: 20 647 141 148

Prepared by

AECOM Australia Pty Ltd,

06-Nov-2023

Job No.: 60670482

AECOM in Australia and New Zealand is certified to ISO9001, ISO14001 and ISO45001.

© (AECOM). All rights reserved.

AECOM has prepared this document for the sole use of the Client and for a specific purpose, each as expressly stated in the document. No other party should rely on this document without the prior written consent of AECOM. AECOM undertakes no duty, nor accepts any responsibility, to any third party who may rely upon or use this document. This document has been prepared based on the Client's description of its requirements and AECOM's experience, having regard to assumptions that AECOM can reasonably be expected to make in accordance with sound professional principles. AECOM may also have relied upon information provided by the Client and other third parties to prepare this document, some of which may not have been verified. Subject to the above conditions, this document may be transmitted, reproduced or disseminated only in its entirety.

## Quality Information

Document Piambong Wind Farm

Ref 60670482

Date 06-Nov-2023

Prepared by Philip Du/Geoff Lucas

Reviewed by Patrick Martinez

## Table of Contents

1.0	Introduction	1
1.1	Wind turbine technical specification	1
1.2	Scope of work	2
1.3	Reference documents	2
2.0	Noise criteria	3
2.1	DPIE Wind Energy Guideline for State significant wind energy development	3
2.2	DPIE Wind Energy: Noise Assessment Bulletin wind farm operational noise criteria	3
2.3	EPA SA Wind farms environmental noise guidelines	4
2.4	Project noise criteria summary	5
3.0	Wind farm operational noise modelling	5
3.1	Methodology	5
3.2	Noise model inputs	5
3.3	Documentation summary	9
4.0	Wind farm operational noise impact	10
4.1	Predicted $L_{Aeq,10\text{minute}}$ noise levels	10
4.2	Predicted C-weighted noise levels	10
4.3	Cumulative noise impacts from other wind farms in the region	18
4.4	Other wind farm noise impacts	18
5.0	Conclusion	19
Appendix A	Acoustic Terminology	A
Appendix B	Wind Farm Layout and Receiver Locations	B
Appendix C	Receiver Location Coordinates	C
Appendix D	Wind Turbine Coordinates	D
Appendix E	Noise Contour Maps	E
Appendix F	Noise compliance assessment results	F

## 1.0 Introduction

AECOM Australia Pty Ltd (AECOM) was commissioned by Wind Power Development Australia Pty Ltd (Vestas) to undertake a Preliminary Noise Impact Assessment (Preliminary NIA) for the proposed development of a wind energy facility in Piambong, Central West New South Wales (NSW).

The proposed Piambong Wind Farm Project (the Project) site is approximately 13,583 hectares and is located about 20 kilometres northwest of Mudgee and about 15 kilometres southwest of Gulgong, in Central NSW.

The Project would have a capital investment in excess of \$30 million, and as such the Project would be considered State Significant Development (SSD) and the development application for the Project will need to be accompanied by an Environmental Impact Statement (EIS). Prior to preparing an EIS, a Scoping Report is required to be submitted to the NSW Department of Planning and Environment (DPE) in order to request Secretary's Environmental Assessment Requirements (SEARs). The Scoping Report is required to be accompanied by a Preliminary NIA identifying noise levels expected at all nearby sensitive receivers.

This Preliminary NIA was prepared in accordance with the DPE *Wind Energy Guideline for State significant wind energy development* (the Wind Energy Guideline) (DPE, 2016). The Wind Energy Guideline specifies that the Preliminary NIA must be prepared in accordance with requirements of the *Wind Energy: Noise Assessment Bulletin for State significant wind energy development* (Noise Assessment Bulletin) (DPIE, 2016).

The key objective of this Preliminary NIA is to assess noise levels at surrounding dwellings and to demonstrate that noise criteria can be practically achieved, taking into consideration typical noise emissions levels that are representative of the turbines that may be used for the Project.

For the purposes of this Preliminary NIA, the wind farm component of the project consists of up to 81 wind turbines with each turbine having an individual electrical power output of up to 6.8 megawatts. The modelled hub height of each turbine is 150 metres above ground level with a rotor diameter of 162 metres. It is noted that, these are maximum wind turbine component dimensions and have been used as inputs to demonstrate worst case noise levels and they are likely to reduce in future design iterations of the Project. The final selection and location of turbines will be determined as part of the detailed design following the obtainment of the development consent for the project.

### 1.1 Wind turbine technical specification

This Preliminary NIA has been prepared using a candidate wind turbine that is representative of the type of turbine that is being considered by Vestas for the project. Vestas will decide on a final wind turbine to be used for the Project following planning approvals being obtained and subsequent detailed design work to determine the preferred turbine. Notwithstanding, the final turbine that is selected for use by the Project would need to comply with planning approval requirements and other relevant criteria, as they relate to noise levels at surrounding receiver locations.

Vestas has advised that the Vestas EnVentus™ V162-6.8 megawatt wind turbine generator (Document number 0111-1246\_01 dated 7 January 2022) has been selected for the purposes of this Preliminary NIA. The general specification of this reference turbine is set out in Table 1. It is understood that all technical data provided by Vestas is subject to change and as such any significant changes to the wind turbines technical specifications as reproduced in Table 1 as well as noise emission details will require reassessment of the impacts of noise of this proposed wind energy facility.

**Table 1 Vestas EnVentus™ V162-6.2MW wind turbine technical description**

Component	Description
Manufacturer	Vestas
Model	EnVentus™ V162-6.8MW
Type	3-bladed, horizontal axis
Power output	6.8 MW

Component	Description
Modelled hub height	150 m
Tip height	230 m
Cut-in wind speed (hub height)	3 m/s
Rated power wind speed (hub height)	13 m/s
Cut-out wind speed (hub height)	25 m/s
Noise level	Values reported in Vestas Document number 0111-1246_01 dated 7 January 2022

## 1.2 Scope of work

The Preliminary NIA for Piambong Wind Farm includes:

- Establishment of the project specific operational noise emission criteria.
- Preliminary impact assessment of wind turbine noise at nearby dwellings (this includes wind turbine noise only).
- Noise contours for maximum wind turbine sound power levels (i.e. at wind turbine rated power).
- Comparison of predicted noise levels against established regulated noise emission criteria to determine whether any of the noise criteria are expected to be exceeded.

The acoustic terminology used in this report is summarised in Appendix A.

## 1.3 Reference documents

The following documents are considered applicable to this project and have been utilised or referenced where appropriate:

- *Wind Energy Guideline for State significant wind energy development* – NSW Department of Planning and Environment, December 2016
- *Wind Energy: Noise Assessment Bulletin for State significant wind energy development* – NSW Department of Planning and Environment, December 2016
- *Wind Energy Framework Frequently Asked Questions* – NSW Department of Planning and Environment, December 2016
- *Wind farms environmental noise guidelines* – South Australian Environment Protection Authority, Issued July 2009 (updated November 2021)
- International Standard ISO 9613-2:1996 – *Acoustics – Attenuation of sound during propagation outdoors – Part 2: General method of calculation*, 1996
- *A good practice guide to the application of ETSU-R-97 for the assessment and rating of wind turbine noise* – Institute of Acoustics, May 2013
- Third octave noise emission EnVentus™ V162-6.8MW, Document number: 0111-1246\_01, Vestas Wind Systems, January 2022.

## 2.0 Noise criteria

This Preliminary NIA was prepared in accordance with the Wind Energy Guideline. The Wind Energy Guideline specifies that the Preliminary NIA must be prepared in accordance with the requirements of the Noise Assessment Bulletin which references a number of documents for use in the assessment of wind energy projects. These documents are discussed below.

### 2.1 DPIE Wind Energy Guideline for State significant wind energy development

The DPIE Wind Energy Guideline Frequently Asked Questions (Wind Energy Guideline FAQ) Document defines an 'associated property' as "*owners and occupiers of land proposed to host wind turbines or related infrastructure, owners and occupiers of land required for access during construction and/or maintenance, or landowners who have reached a financial or in-kind agreement in relation to the proposal*". 'Non-associated properties' are also defined in the Wind Energy Guideline FAQ as "*land owners who have not reached a financial or in-kind agreement in relation to the proposal*". It is noted that both the Queensland and Victorian wind farm development guidelines include a minimum setback distance between wind turbines and non-associated dwellings (1,500 metres and 1,000 metres respectively). Where wind turbines are proposed to be within the setback distance, written consent from the owner of the dwelling must be obtained by the proponent, effectively becoming associated properties. Therefore, a similar approach is recommended where this NIA will consider all dwellings within 1,000 metres as an associated property and subject to a less stringent noise criterion.

### 2.2 DPIE Wind Energy: Noise Assessment Bulletin wind farm operational noise criteria

The DPIE Noise Assessment Bulletin adopts the 2009 South Australian document *Wind farms – environmental noise guidelines* (SA Guidelines) for the basis of regulatory noise standard and assessment methodology for SSD wind energy projects in NSW. In addition, the Noise Assessment Bulletin makes a number of specific variations to the SA Guidelines in recognition that "*regional areas of NSW with high quality wind resources are more populated than the equivalent regions in South Australia*". It is noted that the SA Guidelines have since been updated in November 2021 following a technical review on wind farm environmental noise guidelines carried out by EPA SA. The SA Guidelines were updated with revised data analysis methodologies and further considerations provided on special wind farm noise characteristics. Where there is a discrepancy between the SA Guidelines and the Noise Assessment Bulletin, the Noise Assessment Bulletin will take precedence, otherwise the latest SA Guidelines have been used in this Preliminary NIA.

The Noise Assessment Bulletin specifies only the base noise criteria in the SA Guidelines will be applied in NSW i.e.:

*"The predicted equivalent noise level (LAeq,10 minute)\*, adjusted for tonality and low frequency noise in accordance with these guidelines, should not exceed 35 dB(A) or the background noise (LA90(10 minute)) by more than 5 dB(A), whichever is the greater, at all relevant receivers for wind speed from cut-in to rated power of the wind turbine generator and each integer wind speed in between.*

*\*Determined in accordance with SA 2009, Section 4."*

The Wind Energy Guideline FAQ states that these noise criteria apply to all non-associated dwellings.

The Noise Assessment Bulletin also specifies a requirement for low frequency noise where a 5 dB(A) penalty shall be added to the predicted or measured noise level from the wind energy project where noise is repeatedly greater than 60 dB(C) at non-associated residential receiver locations.

Additionally, the Noise Assessment Bulletin specifies that where excessive tonality is present, a 5 dB(A) penalty should be added to the measured noise level from the wind farm. The presence of excessive tonality shall be consistent with the methodology in *ISO 1996.2: 2007 Acoustics - Description, measurement and assessment of environmental noise – Determination of environmental noise levels (Annex D – Objective method for assessing the audibility of tones in noise – Simplified method)*. However, the Noise Assessment Bulletin mentions that "*The tonal characteristic penalty applies only if the tone*

from the wind turbine is audible at the relevant receiver. Absence of tone in noise emissions measured at an intermediate location is sufficient proof the wind energy project noise is not tonal at a receiver location". As such tonality has not been assessed in this Preliminary NIA.

Revised noise predictions and compliance assessments will be carried out during the preparation of the EIS to assess potential noise impacts associated with any changes to the wind turbine layout or selected turbine.

### 2.3 EPA SA Wind farms environmental noise guidelines

The SA Guidelines includes design guidelines for associated properties (known as 'stakeholders' in the SA Guidelines) in Section 2.3. The SA Guidelines state: "The indicative noise criteria as set out in Table 2 of the Noise Policy less 5dB external day time limit of the land use category (after any adjustments for tonality) can be used as a baseline noise level to determine sufficient level of amenity for stakeholders, in addition to the background plus 5dB(A) limits", where the Noise Policy refers to the South Australian Environment Protection (Noise) Policy 2007 and Table 2 of the Policy is reproduced below in Table 2. Therefore, for the purpose of this Preliminary NIA, all associated properties will be subject to the noise criterion of 42 dB(A) as they fall into the rural living land use category.

Table 2 Table 2 of the South Australian Environment Protection (Noise) Policy 2007

Land use category	Indicative noise factor (dB(A))	
	Day	Night
Rural living	47	40
Residential	52	45
Rural Industry	57	50
Light Industry	57	50
Commercial	62	55
General Industry	65	55
Special Industry	70	60

## 2.4 Project noise criteria summary

Dwellings considered in this assessment are within a combination of E3 Environmental Management, RU1 Primary Production and R5 Large Lot Residential Zones established under the *Mid-Western Regional Local Environmental Plan 2012*, *Warrumbungle Local Environmental Plan 2013* and *Wellington Local Environmental Plan 2012*.

For the purpose of this Preliminary NIA a baseline noise criteria of 42 dB(A) and 35 dB(A)  $L_{Aeq,10\text{minute}}$ , for associated property and non-associated property dwellings respectively, was conservatively applied. Additionally, where predicted noise levels are greater than 60 dB(C) at non-associated residential receivers, a 5 dB(A) penalty should be added to the predicted noise level.

This Preliminary NIA does not rely on background noise measurements to demonstrate compliance with the Noise Assessment Bulletin acoustic requirements.

Future changes to the wind energy facility layout and/or wind turbine specifications will require reassessment of noise impacts. Additionally, if any new dwellings are discovered upon ground-truthing, additional assessment of noise impacts to those dwellings will be required.

## 3.0 Wind farm operational noise modelling

### 3.1 Methodology

A three-dimensional computer noise model of the Project site was created in SoundPLAN Version 8.2, industry-standard acoustic modelling software, to predict operational noise levels at 721 receiver locations (refer to Appendix B and Appendix C for wind farm layout and receiver locations). The Preliminary NIA assessed noise levels at nearby associated property locations and non-associated property locations up to 25 kilometres from the Project site.

Environmental noise predictions were carried out using the algorithms from ISO 9613.2:1996 *Acoustics – Attenuation of Sound during propagation outdoors – Part 2: General method of calculation* and UK Institute of Acoustics - *A Good Practice Guide to the Application of ETSU-R-97 for the Assessment and Rating of Wind Turbine Noise* (2013) (IoA Wind Turbines 2013), as implemented within the SoundPLAN software package and allowed by the Noise Assessment Bulletin and the SA Guidelines. The IoA Wind Turbines 2013 was utilised as it provides modelling parameters specific to the calculation of noise from wind turbines such as atmospheric conditions and ground factor. This also takes into account the potential for additional reflection paths from concave ground profiles. The modelling parameters of IoA Wind Turbines 2013 are further discussed in Section 3.2.

Results from the model are discussed in Section 4.0. The results are discussed in terms of both A and C-weighted equivalent noise level over a 10 minute period ( $L_{Aeq,10\text{minute}}$  and  $L_{Ceq,10\text{minute}}$  respectively). Potential cumulative noise impacts are also discussed.

### 3.2 Noise model inputs

The following data was used to create the computer model:

- Topographical ground contours (five metres resolution) for the project site and surrounding area obtained from the NSW Department of Finance and Services – Spatial Services online mapping tool SIX Maps.
- Proposed project layout containing 81 wind turbines, received from Vestas in June 2023. The wind turbines were entered at hub height of 150 metres above ground level (AGL). The coordinates of the wind turbines are presented in Appendix D
- 721 receiver locations within the assessment area of 25 kilometres from the Project Site provided by Vestas in February 2023 comprised of:
  - 230 non-residential receiver locations denoted as “Building” by Vestas
    - As advised by Vestas, all locations denoted as “Building” for building category are not considered to be dwellings and therefore have not been assessed (although noise levels

have been calculated at these locations in the event that they are identified as dwellings following ground-truthing).

- 491 dwellings
  - 30 of these dwellings have been designated as associated property dwellings.
  - Receiver locations with no assigned building category have been conservatively assessed as non-associated dwellings.
- 15 receivers identified within one kilometre of a proposed wind turbine location, three of which are associated property dwellings with the other 12 receivers designated as a non-residential “Building” by vestas and therefore have not been assessed.
- These locations are preliminary and have been identified by Vestas using satellite imagery and have yet to be ground-truthed with respect to usage and ownership. Receiver locations are subject to change and are regularly changing with the number of non-associated dwellings reducing as a result of commercial agreements with property owners. The locations of these receiver locations provided by Vestas are shown in the figure in Appendix B and the coordinates of the receiver locations are presented in Appendix C.

An aerial view of the Project showing the location of turbines and receiver locations used for this Preliminary NIA is provided in Appendix B.

The following parameters were entered into the computer model, in accordance with the IoA Wind Turbines 2013:

- Atmospheric conditions at 10° C, 70% relative humidity and 1013.3 mbar which represents a reasonably low level of air absorption.
- 50% acoustically hard ground and 50% acoustically soft ground (i.e. ground factor (G) = 0.5). It is acknowledged that there is a large amount of farming land in vicinity of the proposed wind energy facility and nearby receivers locations, however the IoA Wind Turbines 2013 specifically recommends the use of G = 0.5. This value is deemed to provide a conservative representation of the upper noise levels expected in real situations.
- Barrier attenuation of no greater than 2 dB.
- Four metres AGL receiver height. It is acknowledged that 1.5 metres is generally a more realistic representation of single storey receiver heights, however IoA Wind Turbines 2013 recommends a receiver height of 4 metres, as it has the effect of reducing the potential over sensitivity of the calculation to the receiver region ground factor compared to lower receiver heights.
- Application of a 3 dB correction where a concave ground profile exists between a wind turbine and a receiver. This was applied to areas where it is observed that  $h_m \geq (1.5 \times |h_s - h_r| \times 0.5)$  where  $h_m$  is the mean height above ground of the direct line of sight from the receiver to the source (as defined in ISO 9613:2) and  $h_s$  and  $h_r$  are the heights above the local ground level of the source and receiver respectively.
- Two sets of 1/3 octave sound power spectra for a Vestas EnVentus™ V162-6.8 MW wind turbine generator were provided by Vestas for hub height wind speeds from 3 m/s to 15 m/s. The two sets correspond to wind turbines with and without serrated trailing edges in which only the serrated trailing edge spectra was assessed as it was advised by Vestas that serrated edges are the standard for this turbine. This spectrum corresponds to the average estimated sound power level emitted by the wind turbine at hub height. It is acknowledged that the rated power hub height wind speed is reached at 13 m/s, as advised by Vestas however to be conservative, the spectra for 15 m/s was used in the assessment as it represented the highest overall sound power level (refer to Table 3).
- For the purposes of this Preliminary NIA a +1 dB uncertainty correction has been made to the sound power levels to convert the provided sound power levels to declared sound power levels ( $L_{wd}$ ) (refer to Table 3) as recommended in IoA Wind Turbines 2013. The 1/3 octave sound power spectrum at the rated power hub height wind speed with a + 1 dB uncertainty correction which was used in this assessment is presented in Table 4.

- No penalty for special audible characteristics (tonality, impulsiveness, low frequency, and amplitude modulation) was applied (i.e. 0 dB penalty).

It is expected that tonality would not be an audible feature at the distances separating the turbines from the receiver locations however, it will be a requirement of the manufacturer of the selected turbine model that the measured noise levels resulting from the operation of the wind turbines do not exhibit tonal characteristics. It will also be required that the wind turbines are properly maintained by the wind farm operator to ensure that the noise emission of the turbines is not adversely affected by turbine wear, resulting in audible tonality. Similarly, should amplitude modulation be detected upon commissioning, the wind farm operator would be required to alter the operating parameters of some turbines to remove this effect.

**Table 3 Declared sound power levels with serrated trailing edges for different hub height wind speeds**

Wind speed, m/s (Hub height 150 m)	3 (Cut-in)	4	5	6	7	8	9	10	11	12	13 (Rated power)	14	Up to cut-out (25)
Declared sound power level, dB(A) <sup>1</sup>	95.0	95.0	95.0	96.0	99.3	102.5	104.3	104.3	104.4	104.8	105.1	105.3	105.5

**Notes:**

- The sound power levels provided for the Vestas EnVentus™ V162-6.8MW wind turbine generator adjusted by the addition of +1.0 dB to account for typical sound power level test uncertainty.

**Table 4 Sound power level spectra provided by Vestas for 15 m/s hub height wind speed with serrated trailing edges**

Overall dB(A)	1/3 octave frequency band (Hz) sound power level, dB																																
	6.3	8	10	12.5	16	20	25	31.5	40	50	63	80	100	125	160	200	250	315	400	500	630	800	1000	1250	1600	2000	2500	3150	4000	5000	6300	8000	10000
105.5	118.15	116.99	115.4	113.8	112.7	111.3	110	109	108.3	107.4	106.8	106.2	105.4	104.6	104.1	103.2	102.2	101.3	100.2	99	97.8	96.4	95	93.5	91.8	90.1	88.2	86	83.6	81.3	78.7	76.1	73.8

**Notes:**

- The sound power level spectra provided for the Vestas EnVentus™ V162-6.8MW wind turbine generator adjusted by the addition of +1.0 dB to account for typical sound power level test uncertainty.

### 3.3 Documentation summary

Table 5 presents a summary of the sound level prediction documentation.

**Table 5 Sound level prediction documentation summary**

Documentation	Parameters	Location in this report
A map showing the topography in the vicinity of the wind farm, the position of the wind turbines, and noise receiver locations	-	Appendix B
Receiver locations for which wind farm sound levels are calculated	721 receiver locations including 491 noise sensitive receivers	Appendix C
Wind turbine sound power levels	Declared overall sound power level of $L_w = 105.5$ dB(A) at rated power	3.2
The make and model of the wind turbines	Vestas EnVentus™ V162-6.8MW	1.1
The hub height of the wind turbines	150 metres	3.2
Distance of receiver locations from wind turbines	Within 25 kilometres of the project site	Appendix C
Calculation procedure used	ISO 9613.2:1996 and IoA Wind Turbines 2013	3.1
Meteorological conditions assumed	10°C, 70% relative humidity and 1013.3 mbar	3.2
Air absorption parameters used	As per ISO9613.2:1996	3.2
Ground attenuation parameters used	$G = 0.5$	3.2
Topography/screening assumed	Five metre contours	3.2 and Appendix B
Predicted far-field wind farm sound levels	-	Table 6

## 4.0 Wind farm operational noise impact

### 4.1 Predicted $L_{Aeq,10minute}$ noise levels

Table 6 presents the results from the Preliminary NIA for the proposed wind turbine layout using the candidate turbine described in Table 1. These predicted outdoor noise levels were obtained through noise modelling, as outlined in section 3.0. The noise levels presented are free field  $L_{Aeq,10minute}$  noise levels at the receiver locations. The predicted  $L_{Aeq,10minute}$  noise levels were assessed against the base noise criteria of 42 dB(A) and 35(A) dB  $L_{Aeq,10minute}$  for associated and non-associated properties respectively. Although noise levels for 721 receivers over approximately 25 kilometres from the site boundary have been predicted, only receivers within three kilometres of the Project boundary (151 locations) have been presented in this section. As previously mentioned, only receivers which have not been categorised as a “Building” by Vestas (and are therefore dwellings) have been assessed. For indicative noise levels of receivers located further away refer to Appendix F. Appendix E presents a noise contour map showing  $L_{Aeq,10minute}$  contours at 4 metres AGL at the maximum sound power level hub height wind speed of 15 m/s and hub height of 150 metres.

It is noted that the noise contour maps are generated based on a grid of calculations which are interpolated to generate the contours. Single point noise level calculations, as shown in Table 6, should be referred to for specific noise levels at each receiver location.

The predicted noise levels indicate that the noise emissions from the Project are expected to comply at all dwellings with the base noise criteria of 42 dB(A) and 35 dB(A)  $L_{Aeq,10minute}$  for associated and non-associated property dwellings respectively.

Additionally, the conservatism applied in this preliminary assessment is indicative of a worst-case noise propagation scenario (e.g. maximum sound power level of wind turbines at rated power wind speeds) and has been assessed against the conservative base noise criterion of 35 dB(A). It is a requirement during the EIS stage that background noise monitoring is carried out as per the NSW Noise Assessment Bulletin. It is expected that there would be an increase in the noise criterion at the rated power hub height windspeed, i.e. 15 m/s (for the purpose of this assessment), which corresponds to the sound power levels used in the noise predictions.

### 4.2 Predicted C-weighted noise levels

Table 6 presents the predicted C-weighted noise level at nearby dwellings only. For noise levels at all receiver locations refer to Appendix F. No associated and non-associated property dwellings exceeded the low frequency noise criteria of 60 dB(C).

**Table 6 Noise compliance assessment.  $L_{Aeq,10\text{ min}}$  and  $L_{Ceq,10\text{ min}}$  noise prediction of wind turbines noise emission assessed against the hub height (150 m) wind speeds noise criteria for dwellings within three kilometres of the site boundary**

Receiver ID	Receiver coordinates <sup>1</sup>		Associated property	Building category <sup>1</sup>	Predicted noise level at rated power wind speed (15 m/s)		Noise criteria		Complies with noise criteria	
	Easting, m	Northing, m			$L_{Aeq,10\text{ minute}}$	$L_{Ceq,10\text{ minute}}$	$L_{Aeq,10\text{ minute}}$	$L_{Ceq,10\text{ minute}}$	$L_{Aeq,10\text{ minute}}$	$L_{Ceq,10\text{ minute}}$
1	724097	6389568	No	Dwelling	29	49	35	60	Yes	Yes
2	723991	6389219	No	Dwelling	30	50	35	60	Yes	Yes
3	722487	6404941	No	Building	34	54	-	-	-	-
4	721579	6402991	Yes	Dwelling	35	54	42	60	Yes	Yes
5	723974	6395661	Yes	Dwelling	41	57	42	60	Yes	Yes
6	718736	6407795	Yes	Dwelling	41	58	42	60	Yes	Yes
7	716230	6398756	No	Building	34	53	-	-	-	-
8	722426	6405006	No	Building	34	54	-	-	-	-
9	722522	6404889	No	Dwelling	34	54	35	60	Yes	Yes
10	722412	6404306	No	Building	34	54	-	-	-	-
11	721862	6392680	Yes	Building	52	62	-	-	-	-
12	723787	6395367	Yes	Building	43	58	-	-	-	-
13	723842	6395551	Yes	Building	42	58	-	-	-	-
15	724056	6389602	No	Building	29	49	-	-	-	-
16	722299	6394146	Yes	Building	52	61	-	-	-	-
17	722586	6399641	Yes	Building	39	55	-	-	-	-
18	723129	6398877	No	Building	38	55	-	-	-	-
19	723387	6399235	No	Building	36	54	-	-	-	-
20	723423	6399338	Yes	Dwelling	35	54	42	60	Yes	Yes
21	720939	6399026	Yes	Building	43	59	-	-	-	-
22	720652	6400826	Yes	Building	42	58	-	-	-	-

Receiver ID	Receiver coordinates <sup>1</sup>		Associated property	Building category <sup>1</sup>	Predicted noise level at rated power wind speed (15 m/s)		Noise criteria		Complies with noise criteria	
	Easting, m	Northing, m			L <sub>Aeq,10minute</sub>	L <sub>Ceq,10minute</sub>	L <sub>Aeq,10minute</sub>	L <sub>Ceq,10minute</sub>	L <sub>Aeq,10minute</sub>	L <sub>Ceq,10minute</sub>
23	720298	6400722	Yes	Building	43	59	-	-	-	-
24	721779	6402920	No	Building	35	54	-	-	-	-
25	718772	6407702	Yes	Building	41	57	-	-	-	-
26	718998	6407813	Yes	Dwelling	41	57	42	60	Yes	Yes
27	718994	6407774	Yes	Building	41	57	-	-	-	-
28	724559	6393216	No	Dwelling	33	52	35	60	Yes	Yes
29	715940	6407875	No	Dwelling	33	51	35	60	Yes	Yes
30	724169	6391885	No	Dwelling	32	51	35	60	Yes	Yes
30A	723136	6387872	No	Building	28	48	-	-	-	-
31	723213	6387910	No	Building	29	49	-	-	-	-
32	725042	6397163	Yes	Dwelling	35	53	42	60	Yes	Yes
33	724901	6397075	Yes	Dwelling	36	54	42	60	Yes	Yes
34	724802	6397144	Yes	Dwelling	36	54	42	60	Yes	Yes
35	724309	6390124	No	Building	29	49	-	-	-	-
36	722645	6387804	Yes	Dwelling	29	49	42	60	Yes	Yes
37	723039	6388619	No	Dwelling	30	49	35	60	Yes	Yes
38	724354	6390067	No	Dwelling	29	49	35	60	Yes	Yes
39	721530	6388033	No	Dwelling	32	51	35	60	Yes	Yes
40	723171	6387713	No	Dwelling	28	49	35	60	Yes	Yes
41	722597	6387668	No	Building	29	49	-	-	-	-
42	724325	6390369	No	Building	30	50	-	-	-	-
44	720975	6388011	No	Dwelling	30	49	35	60	Yes	Yes
45	715745	6408281	No	Dwelling	31	50	35	60	Yes	Yes

Receiver ID	Receiver coordinates <sup>1</sup>		Associated property	Building category <sup>1</sup>	Predicted noise level at rated power wind speed (15 m/s)		Noise criteria		Complies with noise criteria	
	Easting, m	Northing, m			L <sub>Aeq,10minute</sub>	L <sub>Ceq,10minute</sub>	L <sub>Aeq,10minute</sub>	L <sub>Ceq,10minute</sub>	L <sub>Aeq,10minute</sub>	L <sub>Ceq,10minute</sub>
46	724344	6401335	No	Dwelling	30	51	35	60	Yes	Yes
47	721026	6387911	No	Dwelling	30	49	35	60	Yes	Yes
48	723294	6401771	No	Dwelling	31	52	35	60	Yes	Yes
49	723237	6401727	No	Building	32	52	-	-	-	-
50	725012	6399250	No	Dwelling	31	52	35	60	Yes	Yes
51	722081	6408275	Yes	Dwelling	37	54	42	60	Yes	Yes
52	724478	6401371	No	Dwelling	30	51	35	60	Yes	Yes
53	722153	6408406	Yes	Dwelling	36	54	42	60	Yes	Yes
54	722118	6408177	Yes	Building	38	55	-	-	-	-
55	723159	6401786	No	Dwelling	31	52	35	60	Yes	Yes
56	722534	6407003	Yes	Building	45	59	-	-	-	-
57	723168	6401844	No	Dwelling	31	52	35	60	Yes	Yes
58	724038	6391362	No	Dwelling	32	51	35	60	Yes	Yes
60	723331	6402199	No	Dwelling	31	52	35	60	Yes	Yes
61	724877	6400887	No	Building	30	51	-	-	-	-
62	724914	6400876	No	Building	30	51	-	-	-	-
63	715495	6408634	No	Dwelling	30	50	35	60	Yes	Yes
64	716977	6409785	No	Dwelling	31	50	35	60	Yes	Yes
65	724866	6400920	No	Building	30	51	-	-	-	-
66	725151	6400821	No	Building	29	51	-	-	-	-
67	724914	6400956	No	Dwelling	29	51	35	60	Yes	Yes
68	725265	6400756	No	Dwelling	29	51	35	60	Yes	Yes
69	724973	6390048	No	Dwelling	28	49	35	60	Yes	Yes

Receiver ID	Receiver coordinates <sup>1</sup>		Associated property	Building category <sup>1</sup>	Predicted noise level at rated power wind speed (15 m/s)		Noise criteria		Complies with noise criteria	
	Easting, m	Northing, m			L <sub>Aeq,10minute</sub>	L <sub>Ceq,10minute</sub>	L <sub>Aeq,10minute</sub>	L <sub>Ceq,10minute</sub>	L <sub>Aeq,10minute</sub>	L <sub>Ceq,10minute</sub>
70	725008	6400970	No	Dwelling	29	51	35	60	Yes	Yes
72	720410	6387720	No	Dwelling	29	49	35	60	Yes	Yes
73	716238	6409343	No	Dwelling	29	49	35	60	Yes	Yes
75	725772	6400165	No	Dwelling	29	51	35	60	Yes	Yes
76	726909	6395680	No	Building	32	50	-	-	-	-
77	726893	6395495	No	Building	32	51	-	-	-	-
78	725062	6392012	No	Building	31	51	-	-	-	-
79	726897	6395418	No	Building	32	51	-	-	-	-
80	715128	6396439	No	Dwelling	30	50	35	60	Yes	Yes
81	720578	6387352	No	Dwelling	28	49	35	60	Yes	Yes
82	724807	6407031	No	Dwelling	27	48	35	60	Yes	Yes
83	726958	6395525	Yes	Dwelling	32	51	42	60	Yes	Yes
84	720689	6387212	No	Dwelling	29	49	35	60	Yes	Yes
85	724615	6391536	No	Dwelling	31	50	35	60	Yes	Yes
86	725575	6389728	No	Dwelling	27	48	35	60	Yes	Yes
87	727021	6397137	Yes	Dwelling	30	51	42	60	Yes	Yes
88	714909	6396436	No	Dwelling	29	50	35	60	Yes	Yes
89	720681	6387140	No	Dwelling	29	49	35	60	Yes	Yes
90	727073	6397284	Yes	Dwelling	30	51	42	60	Yes	Yes
91	715610	6401275	No	Dwelling	33	52	35	60	Yes	Yes
92	720126	6387343	No	Dwelling	27	48	35	60	Yes	Yes
93	716782	6410617	No	Dwelling	28	49	35	60	Yes	Yes
94	725796	6389709	No	Dwelling	27	48	35	60	Yes	Yes

Receiver ID	Receiver coordinates <sup>1</sup>		Associated property	Building category <sup>1</sup>	Predicted noise level at rated power wind speed (15 m/s)		Noise criteria		Complies with noise criteria	
	Easting, m	Northing, m			L <sub>Aeq,10minute</sub>	L <sub>Ceq,10minute</sub>	L <sub>Aeq,10minute</sub>	L <sub>Ceq,10minute</sub>	L <sub>Aeq,10minute</sub>	L <sub>Ceq,10minute</sub>
95	727297	6397033	Yes	Dwelling	29	50	42	60	Yes	Yes
96	725297	6407248	No	Dwelling	26	48	35	60	Yes	Yes
97	718340	6390508	No	Dwelling	29	49	35	60	Yes	Yes
98	725840	6390088	No	Dwelling	25	47	35	60	Yes	Yes
99	715218	6401202	No	Dwelling	32	52	35	60	Yes	Yes
100	714987	6409519	No	Dwelling	28	49	35	60	Yes	Yes
102	719640	6387378	No	Dwelling	26	47	35	60	Yes	Yes
104	714309	6398494	No	Dwelling	30	51	35	60	Yes	Yes
105	714618	6396021	No	Dwelling	29	50	35	60	Yes	Yes
106	718125	6390507	No	Dwelling	28	49	35	60	Yes	Yes
108	717800	6411171	Yes	Dwelling	28	49	42	60	Yes	Yes
109	718276	6389340	No	Dwelling	27	48	35	60	Yes	Yes
110	722852	6386125	No	Building	27	50	-	-	-	-
111	726489	6398491	No	Dwelling	28	50	35	60	Yes	Yes
113	722862	6386089	No	Building	27	50	-	-	-	-
114	722875	6386090	No	Building	27	50	-	-	-	-
115	718273	6388745	No	Dwelling	26	48	35	60	Yes	Yes
116	719149	6387482	No	Dwelling	25	47	35	60	Yes	Yes
117	718593	6388054	No	Building	26	47	-	-	-	-
118	722882	6385946	No	Dwelling	26	50	35	60	Yes	Yes
119	718103	6389726	No	Building	28	48	-	-	-	-
120	716404	6411069	No	Dwelling	27	48	35	60	Yes	Yes
121	713966	6398072	No	Dwelling	29	51	35	60	Yes	Yes

Receiver ID	Receiver coordinates <sup>1</sup>		Associated property	Building category <sup>1</sup>	Predicted noise level at rated power wind speed (15 m/s)		Noise criteria		Complies with noise criteria	
	Easting, m	Northing, m			L <sub>Aeq,10minute</sub>	L <sub>Ceq,10minute</sub>	L <sub>Aeq,10minute</sub>	L <sub>Ceq,10minute</sub>	L <sub>Aeq,10minute</sub>	L <sub>Ceq,10minute</sub>
122	714174	6399326	Yes	Dwelling	29	51	42	60	Yes	Yes
123	718067	6389767	No	Dwelling	28	48	35	60	Yes	Yes
124	718029	6389743	No	Building	28	48	-	-	-	-
125	714178	6404568	No	Dwelling	30	50	35	60	Yes	Yes
126	717689	6392493	No	Dwelling	30	51	35	60	Yes	Yes
127	718974	6411162	Yes	Dwelling	29	50	42	60	Yes	Yes
128	716240	6411125	No	Dwelling	27	49	35	60	Yes	Yes
129	718336	6388068	No	Dwelling	25	47	35	60	Yes	Yes
130	716798	6393097	No	Dwelling	30	50	35	60	Yes	Yes
131	727422	6398155	No	Dwelling	28	51	35	60	Yes	Yes
132	716724	6393123	No	Building	30	51	-	-	-	-
133	719106	6411173	No	Building	29	50	-	-	-	-
134	719020	6411251	Yes	Dwelling	29	50	42	60	Yes	Yes
135	714012	6400433	No	Building	29	51	-	-	-	-
136	713981	6404994	Yes	Dwelling	30	50	42	60	Yes	Yes
137	718536	6411509	No	Dwelling	28	49	35	60	Yes	Yes
140	720418	6386620	No	Dwelling	28	49	35	60	Yes	Yes
140A	715276	6410606	No	Building	26	48	-	-	-	-
141	713887	6400683	No	Dwelling	29	51	35	60	Yes	Yes
142	720285	6385926	No	Dwelling	24	47	35	60	Yes	Yes
143	717270	6391290	No	Dwelling	28	49	35	60	Yes	Yes
144	724231	6408572	No	Building	29	49	-	-	-	-
145	717556	6388856	No	Dwelling	26	48	35	60	Yes	Yes

Receiver ID	Receiver coordinates <sup>1</sup>		Associated property	Building category <sup>1</sup>	Predicted noise level at rated power wind speed (15 m/s)		Noise criteria		Complies with noise criteria	
	Easting, m	Northing, m			L <sub>Aeq,10minute</sub>	L <sub>Ceq,10minute</sub>	L <sub>Aeq,10minute</sub>	L <sub>Ceq,10minute</sub>	L <sub>Aeq,10minute</sub>	L <sub>Ceq,10minute</sub>
146	724240	6408617	No	Building	28	49	-	-	-	-
147	714376	6402650	Yes	Dwelling	30	51	42	60	Yes	Yes
148	715445	6411041	No	Dwelling	25	48	35	60	Yes	Yes
149	719207	6386507	No	Dwelling	24	46	35	60	Yes	Yes
151	713710	6403815	Yes	Dwelling	29	50	42	60	Yes	Yes
154	724522	6385557	No	Building	21	45	-	-	-	-
155	724590	6385588	No	Dwelling	21	45	35	60	Yes	Yes
158	718256	6387077	No	Dwelling	23	46	35	60	Yes	Yes
160	719606	6411784	No	Dwelling	28	49	35	60	Yes	Yes
161	713468	6403806	No	Dwelling	29	50	35	60	Yes	Yes
162	718253	6388209	No	Dwelling	25	47	35	60	Yes	Yes
163	718044	6388141	No	Dwelling	25	47	35	60	Yes	Yes
416	722771	6402524	No	Dwelling	33	53	35	60	Yes	Yes
417	723286	6401329	No	Dwelling	32	52	35	60	Yes	Yes
418	722785	6402696	No	Dwelling	33	53	35	60	Yes	Yes

**Notes:**

- Receiver coordinates – MGA 94 Zone 55
- Receivers categorised as “Building” have been identified as Vestas as non-assessment locations

### 4.3 Cumulative noise impacts from other wind farms in the region

At the time of writing this report, there were a number of wind energy projects proposed or in operation in the vicinity of the Project. These projects are:

- Crudine Ridge Wind Farm –operating, located approximately 40 kilometres south west of the Project site.
- Bodangora Wind Farm –operating, located approximately 16 kilometres north west of the project site.
- Uungula Wind Farm – received development consent 11 May 2021, construction expected to commence early-mid 2022, located approximately 9 kilometres west of the project site.
- Burrendong Wind Farm – EIS currently being prepared, located approximately 5.5 kilometres south west of the project site.
- Barneys Reef Wind Farm –EIS currently being prepared, located approximately 28 kilometres north east of the project site.

The DPIE Noise Assessment Bulletin does not provide any specific requirements for addressing cumulative impacts associated with wind energy projects. However, the Wind Energy Guideline mentions the following with regards to cumulative impacts:

*“the consent authority will give consideration as to whether any other proposed, approved or operating wind energy projects in the vicinity are likely to increase the impacts of the wind energy project the subject of the DA, especially in regard to landscape, noise, biodiversity and traffic impacts.”*

Therefore, it is recommended that during the EIS phase, cumulative noise impacts should be investigated and assessed to identify potential noise impacts.

### 4.4 Other wind farm noise impacts

A detailed assessment of noise impacts will need to be included in the EIS addressing the following:

- Detailed wind farm noise impact assessment in accordance with the Noise Assessment Bulletin, including a comprehensive cumulative assessment with other proposed, approved and currently operating wind farms in the area.
- Ancillary infrastructure associated with project in accordance with the NSW EPA document *Noise Policy for Industry 2017*, including cumulative noise impacts from other developments in the area.
- Operational road traffic noise in accordance with the NSW EPA document *NSW Road Noise Policy 2011*.
- Construction noise in accordance with the NSW EPA document *Interim construction noise guideline 2009*.
- Construction and operational vibration impacts in accordance with the NSW EPA document *Vibration – Assessing Vibration: A Technical Guideline, 2016*.

## 5.0 Conclusion

This Preliminary NIA was prepared using a candidate wind turbine that is representative of the type of turbine that is being considered for the Project. Vestas will decide on a final wind turbine to be used for the project following planning approvals being obtained and subsequent detailed design work.

This Preliminary NIA was prepared in accordance with the NSWDPPIE Wind Energy Guideline. The Wind Energy Guideline specifies that the Preliminary NIA must be prepared in accordance with requirements of the Noise Assessment Bulletin.

A three-dimensional noise model of the indicative layout of the project, which consists of 81 wind turbines, was developed to predict noise levels from the wind turbines at 721 receiver locations. This assessment only considered noise emissions from the wind turbines. Noise and vibration from construction of the project and the operation of ancillary facilities will need to be further assessed during the EIS stage.

Based on the predicted noise levels, the noise emissions from the Project are expected to comply at all dwellings with the base noise criteria of 42 dB(A) and 35 dB(A)  $L_{Aeq,10\text{minute}}$  for associated and non-associated property dwellings respectively across all wind speeds.

The modelling of C-weighted noise levels at nearby dwellings indicates that no receivers would experience exceedances of the low frequency noise criteria of 60 dB(C).

Compliance with the established noise criteria will need to be determined during the EIS phase following completion of on-site background noise monitoring and the establishment of site-specific noise criteria. It is expected that there would be an increase in the noise criterion at the rated power hub height windspeed which corresponds to the sound power levels used in the noise predictions.

Cumulative noise impacts associated with the operation of the Project alongside nearby wind energy projects will need to be considered during the EIS.

The final selected turbine would need to comply with planning approval requirements and other relevant criteria as they relate to noise levels at surrounding dwellings. An updated noise compliance assessment would also typically be required once final turbines for the project are selected. This would be carried out prior to construction of the project.

The operating wind turbines would need to be properly maintained by the wind farm operator to ensure that the noise emission of the turbines is not adversely affected by turbine wear, resulting in audible tonality. Similarly, should amplitude modulation be detected upon commissioning, the wind farm operator would be required to alter the operating parameters of some turbines to remove this effect.

Compliance measurements would also need to be undertaken at a selected number of potentially most affected dwellings following the commissioning of the project. Testing should be undertaken once all noise sources associated with the project are in operating mode, i.e. all turbines have been commissioned and are operating correctly.

# Appendix A

## Acoustic Terminology

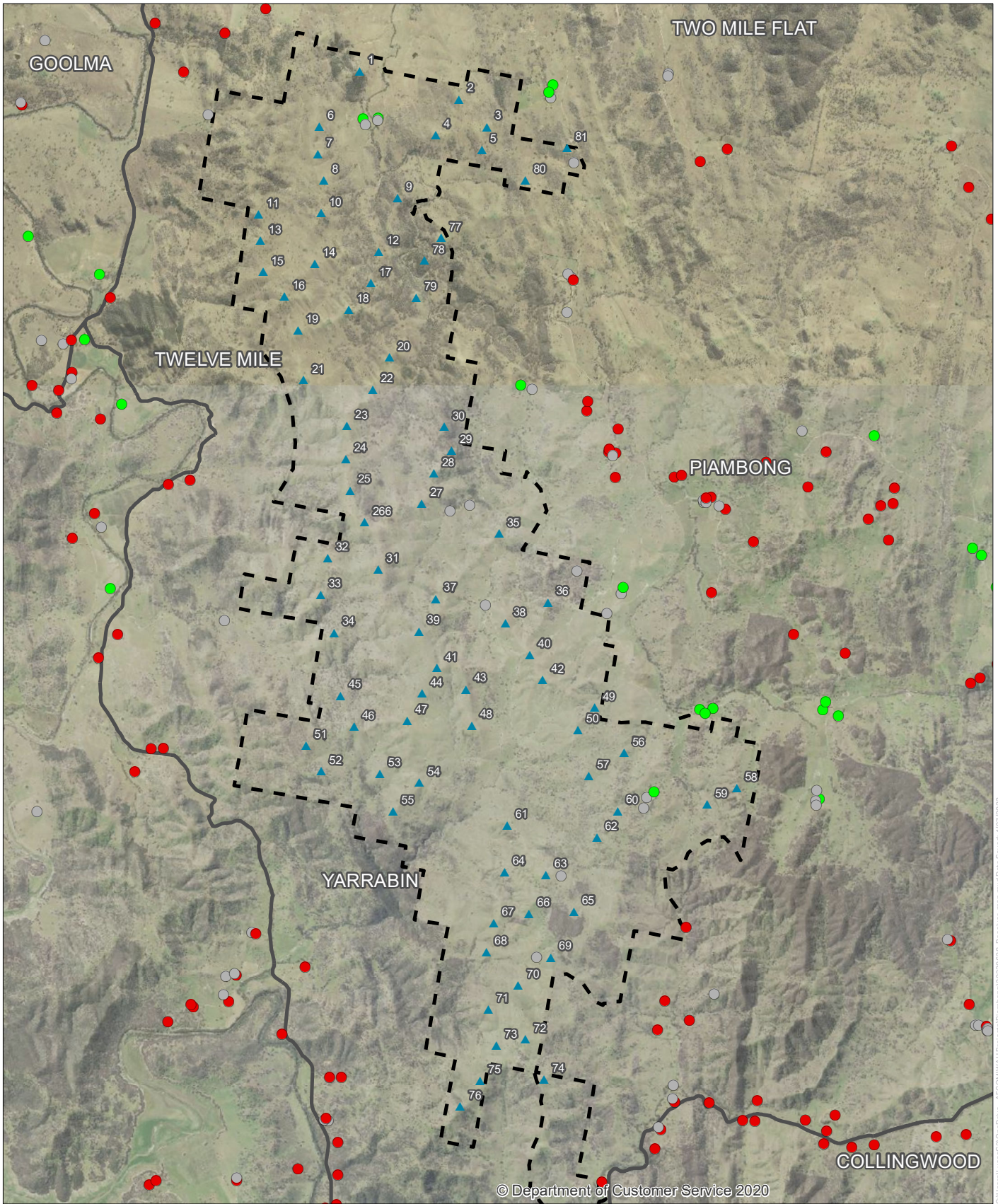
## Appendix A Acoustic terminology

'A' Weighted	Frequency filter applied to measured noise levels to represent how humans hear sounds.
'C' Weighted	Frequency filter applied to measured noise levels to represent the effect of low frequency on humans.
Attended Measurement	Measurements that are attended by a person and measured with a sound level meter.
dB(A)	'A' Weighted overall sound pressure level.
Frequency	The number of cycles per second, where 1 cycle per second is equal to 1Hz. The human ear responds to sounds of frequency 20 Hz to 20,000 Hz.
Impulsiveness	Noise that comprises distinct impulses in the noise (bangs, clicks, clatters, or thumps) etc.
Intermittent	Stopping and starting at irregular intervals.
$L_{Aeq}$	The 'A' Weighted energy-averaged noise level over the measurement period.
$L_{Aeq,10min}$	The energy-averaged level of the total noise measured without adjustment for the character of the noise (e.g. tonal or impulsive), over a period of 10 minutes.
$L_{90}$	Noise level exceeded for 90% of the measurement period. This represents the background noise level excluding nearby sources.
$L_w$	The sound power level is a measure of the total acoustic energy produced by a source and is independent of distance and source location. The sound power level is expressed as a ratio against a reference level of $10^{-12}$ watts.
$L_{wd}$	The declared sound power level of a wind turbine which is based on two or more tests.
Tonality	A characteristic of noise, describing a sound that contains a perceptible pitch or tone. As a general rule, a prominent tonal component may be detected in one-third octave spectra if the level of a one-third octave band exceeds the level of the adjacent bands by 5 dB or more.
Unattended Measurement	Measurements that are taken by a noise logger at a given location unattended.

\*Definitions of a number of terms have been adapted from New Zealand Standard NZS 6808:2010 "Acoustics – Wind farm noise" and the DELWP's *Development of Wind Energy Facilities in Victoria, Policy and Planning Guidelines*.

# Appendix B

## Wind Farm Layout and Receiver Locations



Piambong Wind Farm layout and noise sensitive locations



- ▲ Indicative Turbine Layout
- Project Boundary
- Non-associated Dwelling
- Associated Dwelling
- Building

Copyright: Copyright in material relating to the base layers (contextual information) on this page is licensed under a Creative Commons Attribution 4.0 Australia licence © Department of Customer Service 2020, (Digital Cadastral Database and/or Digital Topographic Database).

The terms of Creative Commons Attribution 4.0 Australia License are available from <https://creativecommons.org/licenses/by/4.0/legalcode> (Copyright Licence)

Neither AECOM Australia Pty Ltd (AECOM) nor the Department of Customer Service make any representations or warranties of any kind, about the accuracy, reliability, completeness or suitability or fitness for purpose in relation to the content (in accordance with section 5 of the Copyright Licence). AECOM has prepared this document for the sole use of its Client based on the Client's description of its requirements having regard to the assumptions and other limitations set out in this report, including page 2.

Source:

C:\Users\lucaris21\OneDrive - AECOM\WAH\Projects\Piambong\02020428\_Receiver\_map.mxd Date Saved: 4/07/2023

# Appendix C

## Receiver Location Coordinates

## Appendix C Receiver location coordinates

**Table 7 Receiver locations within three kilometres from the project site**

Receiver ID	Associated property	Building category	Easting <sup>(1)</sup>	Northing <sup>(1)</sup>	Distance from nearest turbine, m	Distance to project boundary, m
1	No	Dwelling	724097	6389568	2290	1324
2	No	Dwelling	723991	6389219	2357	1121
2A	No	Building	726650	6402173	5530	4510
3	No	Building	722487	6404941	1935	1488
4	Yes	Dwelling	721579	6402991	1578	841
5	Yes	Dwelling	723974	6395661	740	-
6	Yes	Dwelling	718736	6407795	811	-
7	No	Building	716230	6398756	1794	327
8	No	Building	722426	6405006	1850	1417
9	No	Dwelling	722522	6404889	1997	1544
10	No	Building	722412	6404306	2500	1855
11	Yes	Building	721862	6392680	251	-
12	Yes	Building	723787	6395367	469	-
13	Yes	Building	723842	6395551	573	-
15	No	Building	724056	6389602	2239	1277
16	Yes	Building	722299	6394146	271	-
17	Yes	Building	722586	6399641	767	-
18	No	Building	723129	6398877	1078	51
19	No	Building	723387	6399235	1328	472
20	Yes	Dwelling	723423	6399338	1380	581
21	Yes	Building	720939	6399026	486	-
22	Yes	Building	720652	6400826	736	-
23	Yes	Building	720298	6400722	524	-
24	No	Building	721779	6402920	1728	1051
25	Yes	Building	718772	6407702	837	-
26	Yes	Dwelling	718998	6407813	907	-
27	Yes	Building	718994	6407774	941	-
28	No	Dwelling	724559	6393216	2044	43
29	No	Dwelling	715940	6407875	2008	90
30	No	Dwelling	724169	6391885	2202	789
30A	No	Building	723136	6387872	2835	143
31	No	Building	723213	6387910	2833	147
32	Yes	Dwelling	725042	6397163	1506	154
33	Yes	Dwelling	724901	6397075	1471	163
34	Yes	Dwelling	724802	6397144	1573	228
35	No	Building	724309	6390124	2344	1431

Receiver ID	Associated property	Building category	Easting <sup>(1)</sup>	Northing <sup>(1)</sup>	Distance from nearest turbine, m	Distance to project boundary, m
36	Yes	Dwelling	722645	6387804	2741	213
37	No	Dwelling	723039	6388619	2124	40
38	No	Dwelling	724354	6390067	2397	1485
39	No	Dwelling	721530	6388033	2211	433
40	No	Dwelling	723171	6387713	2995	305
41	No	Building	722597	6387668	2863	349
42	No	Building	724325	6390369	2336	1420
43	No	Dwelling	727077	6401786	5696	4703
44	No	Dwelling	720975	6388011	2031	859
45	No	Dwelling	715745	6408281	2278	355
46	No	Dwelling	724344	6401335	3207	2168
47	No	Dwelling	721026	6387911	2140	869
48	No	Dwelling	723294	6401771	2567	1514
49	No	Building	723237	6401727	2495	1443
50	No	Dwelling	725012	6399250	2949	1890
51	Yes	Dwelling	722081	6408275	1058	528
52	No	Dwelling	724478	6401371	3328	2289
53	Yes	Dwelling	722153	6408406	1165	576
54	Yes	Building	722118	6408177	953	581
55	No	Dwelling	723159	6401786	2466	1400
56	Yes	Building	722534	6407003	294	-
57	No	Dwelling	723168	6401844	2508	1437
58	No	Dwelling	724038	6391362	2236	851
59	No	Dwelling	726000	6401606	4676	3663
60	No	Dwelling	723331	6402199	2861	1772
61	No	Building	724877	6400887	3342	2332
62	No	Building	724914	6400876	3368	2360
63	No	Dwelling	715495	6408634	2629	693
64	No	Dwelling	716977	6409785	2032	706
65	No	Building	724866	6400920	3351	2337
66	No	Building	725151	6400821	3543	2550
67	No	Dwelling	724914	6400956	3411	2397
68	No	Dwelling	725265	6400756	3612	2630
69	No	Dwelling	724973	6390048	3012	2099
70	No	Dwelling	725008	6400970	3497	2486
71	No	Dwelling	726755	6401155	5128	4167
72	No	Dwelling	720410	6387720	2262	1494
73	No	Dwelling	716238	6409343	2392	1032
74	Yes	Dwelling	727944	6402076	6598	5612
75	No	Dwelling	725772	6400165	3860	2929

Receiver ID	Associated property	Building category	Easting <sup>(1)</sup>	Northing <sup>(1)</sup>	Distance from nearest turbine, m	Distance to project boundary, m
76	No	Building	726909	6395680	1438	1099
77	No	Building	726893	6395495	1439	1120
78	No	Building	725062	6392012	2932	1135
79	No	Building	726897	6395418	1457	1139
80	No	Dwelling	715128	6396439	2573	1372
81	No	Dwelling	720578	6387352	2631	1570
82	No	Dwelling	724807	6407031	2407	2091
83	Yes	Dwelling	726958	6395525	1499	1178
84	No	Dwelling	720689	6387212	2777	1573
85	No	Dwelling	724615	6391536	2748	1298
86	No	Dwelling	725575	6389728	3660	2748
87	Yes	Dwelling	727021	6397137	2099	1279
88	No	Dwelling	714909	6396436	2792	1588
89	No	Dwelling	720681	6387140	2848	1614
90	Yes	Dwelling	727073	6397284	2238	1399
91	No	Dwelling	715610	6401275	2732	1549
92	No	Dwelling	720126	6387343	2662	1931
93	No	Dwelling	716782	6410617	2719	1470
94	No	Dwelling	725796	6389709	3881	2969
95	Yes	Dwelling	727297	6397033	2249	1488
96	No	Dwelling	725297	6407248	2886	2597
97	No	Dwelling	718340	6390508	2207	1586
98	No	Dwelling	725840	6390088	3868	2951
99	No	Dwelling	715218	6401202	3081	1919
100	No	Dwelling	714987	6409519	3486	1645
101	No	Dwelling	728315	6401141	6121	5072
102	No	Dwelling	719640	6387378	2737	2037
103	No	Building	728068	6400822	5724	4669
104	No	Dwelling	714309	6398494	3726	2223
105	No	Dwelling	714618	6396021	3118	1803
106	No	Dwelling	718125	6390507	2417	1792
107	No	Dwelling	727838	6400574	5400	4336
108	Yes	Dwelling	717800	6411171	2660	1833
109	No	Dwelling	718276	6389340	2300	1846
110	No	Building	722852	6386125	4425	1848
111	No	Dwelling	726489	6398491	2952	1855
112	No	Dwelling	728287	6400853	5854	4818
113	No	Building	722862	6386089	4463	1886
114	No	Building	722875	6386090	4464	1889
115	No	Dwelling	718273	6388745	2533	1947

Receiver ID	Associated property	Building category	Easting <sup>(1)</sup>	Northing <sup>(1)</sup>	Distance from nearest turbine, m	Distance to project boundary, m
116	No	Dwelling	719149	6387482	2833	2112
117	No	Building	718593	6388054	2700	2009
118	No	Dwelling	722882	6385946	4607	2027
119	No	Building	718103	6389726	2395	2052
120	No	Dwelling	716404	6411069	3307	2054
121	No	Dwelling	713966	6398072	4056	2670
122	Yes	Dwelling	714174	6399326	3793	2336
123	No	Dwelling	718067	6389767	2427	2095
124	No	Building	718029	6389743	2467	2128
125	No	Dwelling	714178	6404568	2790	2195
126	No	Dwelling	717689	6392493	3223	2149
127	Yes	Dwelling	718974	6411162	2524	2166
128	No	Dwelling	716240	6411125	3461	2194
129	No	Dwelling	718336	6388068	2877	2203
130	No	Dwelling	716798	6393097	3157	2489
131	No	Dwelling	727422	6398155	3120	2232
132	No	Building	716724	6393123	3161	2524
133	No	Building	719106	6411173	2555	2244
134	Yes	Dwelling	719020	6411251	2618	2266
135	No	Building	714012	6400433	4120	2716
136	Yes	Dwelling	713981	6404994	2949	2253
137	No	Dwelling	718536	6411509	2855	2317
138	No	Dwelling	726704	6389736	4770	3841
140	No	Dwelling	720418	6386620	3362	2124
140A	No	Building	715276	6410606	3911	2436
141	No	Dwelling	713887	6400683	4284	2919
142	No	Dwelling	720285	6385926	4060	2691
143	No	Dwelling	717270	6391290	3470	2602
144	No	Building	724231	6408572	2237	2107
145	No	Dwelling	717556	6388856	3137	2615
146	No	Building	724240	6408617	2271	2143
147	Yes	Dwelling	714376	6402650	3311	2664
148	No	Dwelling	715445	6411041	4008	2687
149	No	Dwelling	719207	6386507	3701	2993
150	No	Dwelling	727040	6389302	5182	4063
151	Yes	Dwelling	713710	6403815	3443	2726
152	No	Dwelling	713491	6400235	4588	3168
153	No	Dwelling	727092	6389540	5185	4169
154	No	Building	724522	6385557	5524	2834
155	No	Dwelling	724590	6385588	5527	2842

Receiver ID	Associated property	Building category	Easting <sup>(1)</sup>	Northing <sup>(1)</sup>	Distance from nearest turbine, m	Distance to project boundary, m
156	No	Dwelling	727243	6389823	5292	4197
157	No	Dwelling	730063	6405983	7759	7407
158	No	Dwelling	718256	6387077	3660	2946
159	No	Dwelling	717767	6387289	3826	3135
160	No	Dwelling	719606	6411784	3266	2947
161	No	Dwelling	713468	6403806	3673	2964
162	No	Dwelling	718253	6388209	2849	2193
162A	No	Building	721773	6411560	3654	3012
163	No	Dwelling	718044	6388141	3056	2408
163A	No	Building	716410	6392373	3974	3283
164	No	Dwelling	716448	6392349	3982	3277
165	No	Building	722093	6411573	3792	3089
166	No	Building	721797	6411636	3733	3091
167	No	Building	722174	6411580	3834	3112
168	No	Building	713327	6403739	3828	3116
169	No	Dwelling	713481	6403223	3895	3124
170	No	Dwelling	713993	6402378	3732	3131
171	Yes	Dwelling	712694	6405682	4166	3141
172	No	Building	716254	6392336	4073	3409
173	No	Building	713472	6403104	3959	3180
174	Yes	Dwelling	721847	6411739	3848	3202
175	No	Dwelling	727545	6389245	5688	4543
176	No	Building	713001	6409217	4965	3239
177	No	Dwelling	718998	6412346	3705	3256
178	No	Building	718956	6412405	3760	3298
179	No	Building	718576	6412583	3927	3370
180	No	Dwelling	729342	6407309	6931	6635
181	No	Building	718930	6412509	3861	3388
182	No	Dwelling	712582	6408048	4697	3424
183	No	Building	723757	6411182	4137	3430
184	No	Dwelling	722187	6411906	4134	3434
185	No	Building	716221	6391997	4395	3692
186	No	Building	723796	6411183	4150	3455
187	No	Building	712557	6408093	4738	3457
188	No	Building	723822	6411184	4160	3473
189	No	Dwelling	713242	6402895	4263	3477
190	No	Building	712937	6403806	4177	3486
191	No	Building	721616	6412078	4094	3487
192	No	Building	723823	6411209	4185	3494
193	Yes	Dwelling	729723	6400051	6069	5203

Receiver ID	Associated property	Building category	Easting <sup>(1)</sup>	Northing <sup>(1)</sup>	Distance from nearest turbine, m	Distance to project boundary, m
194	No	Building	721551	6412107	4104	3503
195	No	Dwelling	716306	6391873	4476	3649
196	No	Dwelling	713311	6410518	5437	3561
197	No	Building	712852	6395298	4993	3584
198	No	Building	723920	6411258	4264	3593
199	No	Building	726052	6385950	6074	3595
200	No	Dwelling	730453	6401561	7677	6783
201	No	Dwelling	727943	6389284	6069	4940
202	No	Dwelling	723841	6411461	4428	3702
203	No	Dwelling	713211	6402485	4487	3702
204	Yes	Dwelling	729882	6399920	6090	5235
205	No	Dwelling	713035	6410388	5610	3709
206	No	Building	719155	6412784	4156	3721
207	No	Building	716451	6388694	4234	3730
208	No	Building	719962	6412512	4067	3731
209	No	Dwelling	722748	6412075	4542	3735
210	No	Dwelling	716453	6388641	4248	3738
211	No	Building	713022	6410433	5643	3745
212	No	Building	713002	6410409	5649	3748
213	No	Dwelling	723696	6411635	4550	3758
214	No	Building	723653	6411671	4573	3764
215	Yes	Dwelling	720000	6412559	4124	3786
216	No	Building	712993	6410495	5699	3804
217	No	Dwelling	724240	6411275	4403	3821
218	No	Building	712998	6410543	5718	3827
219	No	Building	723655	6411751	4651	3832
220	No	Building	720167	6412582	4202	3849
221	No	Building	720107	6412606	4204	3857
222	No	Dwelling	712765	6402984	4641	3878
223	No	Dwelling	723789	6411767	4703	3919
224	No	Dwelling	713053	6410780	5796	3927
225	No	Dwelling	715626	6391823	4815	4026
226	No	Dwelling	715667	6391782	4831	4059
227	No	Building	722833	6412291	4773	3968
228	No	Dwelling	714029	6411698	5546	3970
229	No	Dwelling	713871	6411606	5630	3979
230	No	Dwelling	713910	6411637	5613	3982
231	No	Building	729270	6392997	4674	3996
232	No	Dwelling	717442	6386348	4739	4029
233	No	Dwelling	729331	6392969	4739	4063

Receiver ID	Associated property	Building category	Easting <sup>(1)</sup>	Northing <sup>(1)</sup>	Distance from nearest turbine, m	Distance to project boundary, m
234	No	Dwelling	722195	6383736	6476	4127
235	No	Dwelling	729861	6397712	4821	4137
236	No	Building	724340	6411630	4768	4150
237	No	Dwelling	729684	6397616	4619	3939
237A	No	Building	720199	6412928	4538	4192
238	No	Building	720250	6412927	4554	4204
239	No	Building	724441	6411646	4824	4229
240	No	Dwelling	723708	6412190	5088	4235
241	No	Building	724463	6411656	4843	4252
242	Yes	Dwelling	720170	6412998	4595	4253
243	Yes	Dwelling	730153	6399353	5926	5109
244	No	Building	724484	6411671	4864	4276
245	No	Building	722034	6383572	6594	4294
246	No	Dwelling	717207	6386177	5021	4314
247	No	Dwelling	722083	6383446	6728	4418
248	No	Dwelling	715210	6391510	5296	4428
249	No	Dwelling	730166	6397959	5201	4502
250	No	Dwelling	722242	6383358	6853	4505
251	No	Dwelling	723090	6412783	5326	4516
252	No	Building	723805	6412561	5471	4605
253	No	Building	723802	6412575	5484	4617
254	No	Dwelling	723842	6412557	5477	4620
255	No	Dwelling	721478	6383291	6763	4626
256	No	Building	723844	6412590	5509	4650
257	No	Dwelling	730277	6398154	5387	4672
258	No	Dwelling	723219	6383278	7240	4692
259	No	Dwelling	731044	6399921	6978	6166
260	No	Dwelling	723020	6413026	5507	4725
261	No	Dwelling	729069	6389437	7154	5795
262	No	Building	721564	6413379	5343	4751
263	No	Dwelling	730311	6398308	5488	4759
264	No	Dwelling	730446	6398920	5915	5140
265	No	Dwelling	724432	6412364	5480	4778
266	No	Dwelling	721562	6383110	6956	4795
267	No	Building	723835	6412762	5674	4797
268	No	Dwelling	730323	6398421	5553	4814
269	No	Building	721254	6383122	6902	4832
270	No	Dwelling	730413	6398747	5795	5033
271	No	Building	725056	6411950	5375	4874
272	No	Dwelling	729658	6391819	5722	4875

Receiver ID	Associated property	Building category	Easting <sup>(1)</sup>	Northing <sup>(1)</sup>	Distance from nearest turbine, m	Distance to project boundary, m
273	No	Dwelling	725059	6411982	5405	4899
274	No	Building	725157	6411888	5373	4904
275	No	Dwelling	730381	6398547	5665	4918
276	No	Building	723226	6383026	7476	4939
277	No	Dwelling	721303	6382962	7066	4980
278	No	Dwelling	724329	6412779	5833	5061
279	No	Dwelling	715001	6388639	5646	5171
280	No	Building	729776	6391452	6062	5177
281	No	Building	718198	6414530	5892	5214
282	No	Dwelling	720493	6382927	7055	5217
283	No	Building	729834	6391448	6106	5227
284	No	Dwelling	729605	6389477	7487	6203
285	No	Dwelling	714874	6388571	5785	5306
286	No	Dwelling	723578	6413484	6178	5345
287	No	Dwelling	729968	6391423	6220	5352
288	No	Dwelling	724027	6413297	6240	5360
289	No	Building	718236	6414684	6043	5372
290	No	Building	729976	6391364	6266	5391
291	No	Dwelling	724744	6412901	6095	5396
292	No	Dwelling	724036	6413334	6278	5397
293	No	Building	729998	6391383	6269	5399
294	No	Building	710475	6405239	6414	5404
295	No	Building	729995	6391345	6292	5417
296	No	Dwelling	714514	6413854	6652	5419
297	No	Building	724718	6412957	6137	5427
298	No	Building	710908	6409906	7065	5441
299	No	Building	711309	6410905	7348	5456
300	No	Dwelling	714550	6413937	6695	5469
301	No	Dwelling	710856	6409831	7069	5470
302	No	Dwelling	712812	6412736	7136	5515
303	No	Dwelling	724414	6413313	6366	5561
304	No	Building	710778	6403893	6257	5566
305	No	Dwelling	712736	6412777	7221	5593
306	No	Building	710781	6403606	6312	5646
307	No	Dwelling	724505	6413372	6451	5658
308	No	Building	710325	6396310	7378	6103
309	No	Dwelling	724474	6413405	6473	5670
310	No	Dwelling	732089	6399797	7772	7002
311	No	Dwelling	731565	6395637	6094	5708
312	No	Dwelling	731720	6399049	7080	6345

Receiver ID	Associated property	Building category	Easting <sup>(1)</sup>	Northing <sup>(1)</sup>	Distance from nearest turbine, m	Distance to project boundary, m
313	No	Building	710286	6396222	7420	6135
314	No	Building	717862	6415080	6473	5732
315	No	Dwelling	717826	6415082	6480	5732
316	No	Dwelling	725229	6412990	6377	5762
317	No	Building	710222	6396151	7486	6193
318	No	Dwelling	710248	6396022	7467	6161
319	No	Dwelling	724658	6413532	6653	5875
320	No	Building	710091	6396378	7610	6342
321	No	Dwelling	717411	6415265	6726	5909
322	No	Building	710010	6396404	7691	6426
323	No	Dwelling	717605	6415355	6781	5998
324	No	Building	730256	6390564	7034	6097
325	No	Dwelling	724801	6413621	6785	6025
326	No	Dwelling	730370	6390581	7100	6175
327	No	Dwelling	730457	6389898	7665	6685
328	No	Dwelling	724850	6413739	6913	6151
329	No	Dwelling	732568	6399682	8127	7379
330	No	Building	730479	6390332	7356	6416
331	No	Dwelling	730484	6390383	7321	6387
332	No	Dwelling	724900	6413778	6968	6211
333	No	Building	709663	6396587	8039	6791
334	No	Dwelling	715286	6415262	7419	6319
335	No	Dwelling	730730	6390747	7238	6363
336	No	Building	716211	6415595	7359	6377
337	No	Dwelling	718366	6382608	7671	6483
338	No	Building	730758	6390758	7250	6379
339	No	Dwelling	716241	6415606	7360	6382
340	No	Building	709548	6396640	8154	6911
341	No	Building	730774	6390749	7268	6398
342	No	Building	725194	6413817	7114	6404
343	No	Building	709518	6396686	8185	6947
344	No	Building	709461	6396614	8240	6994
345	No	Building	709329	6405353	7547	6510
346	No	Building	709328	6405308	7553	6518
347	No	Dwelling	709514	6408512	7724	6525
348	No	Dwelling	725312	6413898	7235	6538
349	No	Building	718494	6382365	7872	6611
350	No	Dwelling	709391	6396649	8311	7068
351	No	Building	730999	6390737	7442	6590
352	No	Dwelling	731031	6390771	7443	6598

Receiver ID	Associated property	Building category	Easting <sup>(1)</sup>	Northing <sup>(1)</sup>	Distance from nearest turbine, m	Distance to project boundary, m
353	No	Dwelling	726402	6382198	9371	6683
354	No	Building	717762	6416054	7452	6700
355	No	Dwelling	714550	6415376	7880	6720
356	No	Dwelling	714000	6386553	7335	6733
357	No	Dwelling	717941	6416086	7464	6741
358	No	Dwelling	717885	6416094	7478	6746
359	No	Building	731756	6391737	7440	6774
360	No	Building	717811	6416139	7531	6787
361	No	Dwelling	725490	6414112	7502	6815
362	No	Building	718815	6381928	8225	6817
363	No	Building	725543	6414112	7525	6846
364	No	Dwelling	713869	6386517	7467	6867
365	No	Dwelling	714170	6415357	8070	6881
366	No	Dwelling	714278	6415446	8084	6907
367	No	Dwelling	714383	6415506	8078	6911
368	No	Dwelling	714279	6415472	8105	6929
369	No	Building	708844	6405898	8000	6930
370	No	Dwelling	731899	6391672	7596	6932
371	No	Dwelling	726804	6413139	7331	6964
372	No	Dwelling	731961	6391692	7638	6981
373	No	Dwelling	714275	6415555	8177	7004
374	No	Building	732052	6391819	7649	7016
375	No	Dwelling	721600	6380839	9210	7048
376	No	Dwelling	708715	6405912	8128	7058
377	No	Building	714290	6415624	8228	7059
378	No	Dwelling	721493	6415737	7623	7070
379	No	Dwelling	714452	6415725	8230	7077
380	No	Building	714300	6415651	8245	7078
381	No	Dwelling	723240	6380846	9542	7090
382	No	Dwelling	714462	6415750	8246	7094
383	No	Dwelling	721757	6415748	7707	7118
384	No	Building	731670	6390735	7954	7156
385	No	Dwelling	714224	6415707	8334	7163
386	No	Dwelling	714159	6415674	8340	7164
387	No	Dwelling	721781	6415828	7790	7201
388	No	Dwelling	731732	6390688	8032	7234
389	No	Dwelling	721456	6415918	7779	7246
390	No	Dwelling	714174	6415780	8421	7250
391	No	Building	731734	6390659	8052	7251
392	No	Dwelling	732071	6391277	7955	7252

Receiver ID	Associated property	Building category	Easting <sup>(1)</sup>	Northing <sup>(1)</sup>	Distance from nearest turbine, m	Distance to project boundary, m
393	No	Dwelling	714058	6415720	8434	7253
394	No	Building	714149	6415778	8433	7261
395	No	Dwelling	714035	6415724	8450	7267
396	No	Building	714130	6415782	8447	7273
397	No	Dwelling	714088	6415787	8473	7297
398	No	Dwelling	714065	6415776	8477	7298
399	No	Building	731639	6389577	8705	7792
400	No	Dwelling	731910	6390841	8078	7311
401	No	Dwelling	712642	6414817	8617	7334
402	No	Dwelling	713901	6415744	8540	7350
403	No	Dwelling	726701	6413826	7835	7365
404	No	Dwelling	731753	6389664	8725	7828
405	No	Building	731753	6389609	8764	7863
406	No	Dwelling	731733	6390329	8262	7426
407	No	Building	731745	6390283	8302	7462
408	No	Dwelling	708560	6408530	8639	7466
409	No	Dwelling	726263	6381229	10176	7481
410	No	Dwelling	714268	6416091	8638	7486
411	No	Dwelling	731516	6387294	10040	8421
412	No	Dwelling	731902	6389035	9276	8340
413	No	Dwelling	731530	6410908	9817	9658
414	No	Building	731917	6389233	9145	8225
415	No	Dwelling	733108	6393482	7958	7609
416	No	Dwelling	722771	6402524	2546	1542
416A	No	Building	731914	6388910	9374	8430
417	No	Dwelling	723286	6401329	2338	1362
418	No	Dwelling	722785	6402696	2612	1677
418A	No	Building	725924	6414800	8309	7628
419	No	Building	708073	6405736	8775	7711
420	No	Dwelling	727641	6381738	10397	7740
421	No	Dwelling	726533	6381062	10443	7748
422	No	Building	708017	6405809	8829	7761
423	No	Building	731987	6388268	9899	8857
424	No	Building	726028	6414898	8442	7767
425	No	Dwelling	732110	6389370	9187	8292
426	No	Building	726139	6414838	8436	7783
427	No	Dwelling	731942	6387850	10188	8816
428	No	Building	731818	6387213	10352	8729
429	No	Dwelling	728535	6412718	8196	8075
430	No	Dwelling	713626	6416145	9027	7835

Receiver ID	Associated property	Building category	Easting <sup>(1)</sup>	Northing <sup>(1)</sup>	Distance from nearest turbine, m	Distance to project boundary, m
431	No	Dwelling	731874	6387159	10422	8790
432	No	Dwelling	712347	6388012	8372	7890
433	No	Building	731510	6411283	9944	9797
434	No	Dwelling	712321	6388002	8400	7918
435	No	Dwelling	712320	6387931	8417	7931
436	No	Dwelling	712306	6387971	8422	7938
437	No	Building	731448	6411369	9923	9777
438	No	Dwelling	712285	6388007	8434	7952
439	No	Building	718578	6417258	8602	7969
440	No	Dwelling	712261	6388000	8458	7977
441	No	Building	731540	6411368	10006	9860
442	No	Dwelling	718555	6417307	8651	8015
443	No	Building	718540	6417322	8666	8027
444	No	Building	731524	6411435	10019	9874
445	No	Dwelling	712186	6387994	8532	8052
446	No	Dwelling	728735	6412870	8447	8325
447	No	Dwelling	712186	6387930	8548	8064
448	No	Dwelling	712170	6387934	8563	8078
449	No	Building	731630	6411421	10111	9964
450	No	Dwelling	712147	6387992	8571	8091
451	No	Dwelling	712127	6387998	8589	8109
452	No	Dwelling	712116	6388001	8599	8120
453	No	Dwelling	712117	6387965	8607	8125
454	No	Dwelling	712104	6388004	8610	8131
455	No	Dwelling	712096	6388009	8617	8138
456	No	Dwelling	732268	6387674	10532	9147
457	No	Dwelling	712087	6388012	8625	8146
458	No	Dwelling	712078	6388013	8633	8155
459	No	Dwelling	712067	6388021	8642	8165
460	No	Dwelling	712055	6388031	8652	8175
461	No	Dwelling	712044	6388033	8662	8185
462	No	Dwelling	731753	6411474	10244	10098
463	No	Dwelling	712035	6388035	8670	8194
464	No	Dwelling	713386	6416423	9391	8195
465	No	Dwelling	713413	6416471	9416	8223
466	No	Dwelling	712009	6387774	8758	8266
467	No	Dwelling	712012	6387736	8764	8270
468	No	Dwelling	711978	6387758	8792	8299
469	No	Dwelling	729152	6412905	8786	8661
470	No	Dwelling	711959	6387797	8800	8310

Receiver ID	Associated property	Building category	Easting <sup>(1)</sup>	Northing <sup>(1)</sup>	Distance from nearest turbine, m	Distance to project boundary, m
471	No	Dwelling	711971	6387696	8815	8319
472	No	Dwelling	711923	6387945	8800	8320
473	No	Dwelling	711897	6388073	8797	8325
474	No	Dwelling	711955	6387710	8826	8331
475	No	Dwelling	711956	6387686	8831	8334
476	No	Dwelling	711900	6387984	8813	8335
477	No	Dwelling	711949	6387679	8841	8344
478	No	Dwelling	711941	6387709	8840	8345
479	No	Dwelling	711869	6388114	8815	8346
480	No	Building	731722	6411669	10298	10153
481	No	Dwelling	729378	6412815	8904	8777
482	No	Dwelling	711927	6387758	8841	8349
483	No	Dwelling	711911	6387785	8850	8360
484	No	Dwelling	711928	6387698	8855	8360
485	No	Dwelling	711931	6387677	8858	8361
486	No	Dwelling	711892	6387874	8846	8362
487	No	Dwelling	711851	6388119	8831	8362
488	No	Dwelling	711849	6388091	8840	8369
489	No	Dwelling	711898	6387783	8863	8373
490	No	Dwelling	711837	6388124	8844	8376
491	No	Dwelling	711838	6388098	8849	8379
492	No	Dwelling	711885	6387780	8876	8386
493	No	Dwelling	711871	6387853	8872	8386
494	No	Dwelling	711825	6388128	8855	8387
495	No	Dwelling	711824	6388105	8861	8391
496	No	Dwelling	711866	6387822	8884	8397
497	No	Dwelling	711877	6387749	8892	8400
498	No	Dwelling	711810	6388134	8869	8401
499	No	Dwelling	711887	6387679	8900	8404
500	No	Dwelling	711852	6387840	8894	8408
501	No	Dwelling	711873	6387711	8905	8411
502	No	Building	732449	6411291	10813	10653
503	No	Dwelling	711850	6387764	8914	8423
506	No	Dwelling	711849	6387736	8922	8430
507	No	Dwelling	711824	6387852	8918	8433
508	No	Dwelling	711776	6388145	8900	8433
509	No	Dwelling	711838	6387760	8927	8436
510	No	Dwelling	711831	6387796	8925	8436
511	No	Dwelling	711830	6387859	8910	8426
511A	No	Building	732429	6411335	10811	10653

Receiver ID	Associated property	Building category	Easting <sup>(1)</sup>	Northing <sup>(1)</sup>	Distance from nearest turbine, m	Distance to project boundary, m
512	No	Dwelling	711834	6387735	8937	8445
513	No	Dwelling	711794	6387927	8930	8450
514	No	Dwelling	711828	6387728	8945	8452
515	No	Dwelling	711761	6388110	8921	8453
516	No	Building	711836	6387683	8948	8453
517	No	Dwelling	711809	6387814	8942	8454
518	No	Dwelling	711749	6388160	8923	8457
519	No	Dwelling	711788	6387906	8941	8460
520	No	Dwelling	711815	6387718	8959	8466
521	No	Dwelling	711740	6388160	8932	8467
522	No	Dwelling	711806	6387715	8969	8476
523	No	Dwelling	711729	6388161	8942	8478
524	No	Dwelling	711799	6387742	8969	8478
526	No	Dwelling	711752	6387957	8963	8486
527	No	Dwelling	711715	6388171	8954	8490
528	No	Dwelling	711760	6387875	8975	8492
529	No	Dwelling	711705	6388173	8963	8499
530	No	Dwelling	711697	6388183	8969	8506
531	No	Dwelling	711762	6387767	8998	8509
532	No	Dwelling	713282	6416725	9700	8509
533	No	Dwelling	711777	6387679	9007	8512
534	No	Dwelling	711750	6387809	9000	8514
535	No	Dwelling	711780	6387644	9012	8515
536	No	Dwelling	711686	6388195	8978	8516
537	No	Dwelling	711720	6387969	8992	8516
538	No	Dwelling	711764	6387697	9014	8521
539	No	Dwelling	711773	6387652	9017	8521
540	No	Dwelling	713264	6416731	9715	8523
541	No	Dwelling	711681	6388158	8990	8525
542	No	Dwelling	711762	6387682	9020	8526
543	No	Dwelling	711737	6387806	9013	8527
544	No	Dwelling	711568	6388745	9001	8531
545	No	Dwelling	711761	6387654	9029	8533
546	No	Dwelling	711755	6387633	9040	8543
547	No	Dwelling	711750	6387626	9046	8548
548	No	Dwelling	711648	6388225	9009	8549
549	No	Dwelling	711645	6388238	9010	8551
550	No	Dwelling	711751	6387608	9050	8551
551	No	Dwelling	711809	6387667	8979	8483
552	No	Dwelling	711640	6388246	9012	8554

Receiver ID	Associated property	Building category	Easting <sup>(1)</sup>	Northing <sup>(1)</sup>	Distance from nearest turbine, m	Distance to project boundary, m
553	No	Dwelling	713394	6416847	9741	8560
554	No	Dwelling	729589	6412929	9140	9013
555	No	Dwelling	711629	6388262	9020	8563
556	No	Dwelling	731943	6411792	10550	10405
557	No	Dwelling	711617	6388293	9027	8571
558	No	Dwelling	711618	6388280	9028	8571
559	No	Dwelling	711581	6388607	9008	8573
560	No	Dwelling	713220	6416777	9778	8585
561	No	Dwelling	711569	6388580	9025	8588
562	No	Dwelling	711564	6388574	9031	8594
563	No	Dwelling	711554	6388642	9029	8597
564	No	Dwelling	711580	6388368	9049	8598
565	No	Dwelling	711632	6387982	9075	8601
566	No	Dwelling	711556	6388563	9040	8602
567	No	Dwelling	711574	6388374	9054	8604
568	No	Dwelling	711560	6388446	9055	8610
569	No	Building	711634	6387908	9090	8610
570	No	Dwelling	721469	6417301	9087	8623
571	No	Dwelling	711542	6388466	9070	8626
572	No	Building	713313	6416878	9811	8627
573	No	Dwelling	711525	6388587	9067	8631
574	No	Dwelling	711527	6388520	9076	8636
576	No	Building	721435	6417342	9116	8661
577	No	Building	721393	6417354	9114	8669
578	No	Dwelling	711537	6388111	9141	8675
579	No	Building	711523	6388061	9164	8695
580	No	Dwelling	711460	6388494	9146	8705
581	No	Dwelling	731827	6412091	10578	10435
582	No	Dwelling	713294	6417040	9957	8777
583	No	Dwelling	720245	6417995	9471	9024
584	No	Building	720243	6418035	9510	9062
585	No	Building	720173	6418144	9606	9150
586	No	Building	720145	6418168	9625	9166
587	No	Dwelling	720559	6418061	9592	9174
588	No	Building	720188	6418199	9663	9207
589	No	Building	713164	6417460	10382	9208
590	No	Building	713177	6417478	10390	9218
591	No	Building	713176	6417499	10408	9237
592	No	Dwelling	713129	6417526	10456	9283
593	No	Dwelling	713118	6417557	10489	9316

Receiver ID	Associated property	Building category	Easting <sup>(1)</sup>	Northing <sup>(1)</sup>	Distance from nearest turbine, m	Distance to project boundary, m
594	No	Building	709094	6414548	11209	9384
595	No	Dwelling	709104	6414737	11318	9504
596	No	Dwelling	713052	6417828	10754	9586
597	No	Building	709011	6414769	11411	9594
598	No	Building	713055	6417938	10846	9682
599	No	Dwelling	714588	6418635	10779	9735
600	No	Dwelling	713514	6418337	10966	9841
601	No	Dwelling	713537	6418306	10928	9803
602	No	Dwelling	713522	6418363	10986	9861
603	No	Dwelling	722438	6418533	10569	9979
604	No	Building	721182	6418791	10442	10060
605	No	Dwelling	721348	6418768	10461	10075
606	No	Building	721160	6418857	10501	10116
607	No	Building	721274	6418840	10512	10137
608	No	Building	722414	6418712	10731	10150
609	No	Building	721311	6418846	10527	10151
610	No	Dwelling	714437	6419455	11597	10563
611	No	Dwelling	712614	6418732	11754	10590
612	No	Building	714453	6419592	11719	10690
613	No	Building	714497	6419609	11719	10693
614	No	Dwelling	712656	6418967	11935	10779
615	No	Dwelling	705963	6412339	12556	10917
616	No	Building	705555	6412160	12825	11235
617	No	Dwelling	705395	6412068	12923	11355
618	No	Dwelling	711376	6419071	12713	11504
619	No	Dwelling	716357	6420862	12422	11566
620	No	Building	712318	6419711	12747	11595
621	No	Dwelling	712286	6419701	12754	11601
622	No	Building	716379	6420927	12482	11628
623	No	Building	716325	6420953	12517	11659
624	No	Building	712515	6419985	12891	11755
625	No	Dwelling	710659	6418937	13031	11794
626	No	Building	710538	6418913	13087	11845
627	No	Building	712841	6420247	12972	11860
628	No	Building	710277	6418745	13122	11869
629	No	Building	710544	6418972	13129	11890
630	No	Building	703725	6409555	13572	12408
631	No	Dwelling	718566	6421745	13088	12430
632	No	Building	703666	6409405	13591	12438
633	No	Building	718366	6421807	13153	12477

Receiver ID	Associated property	Building category	Easting <sup>(1)</sup>	Northing <sup>(1)</sup>	Distance from nearest turbine, m	Distance to project boundary, m
634	No	Building	703612	6409601	13693	12527
635	No	Dwelling	703636	6409748	13709	12530
636	No	Building	718316	6421883	13231	12550
637	No	Dwelling	718419	6421881	13226	12555
638	No	Dwelling	703547	6409451	13718	12564
639	No	Dwelling	703354	6409948	14034	12843
640	No	Dwelling	718123	6422414	13767	13069
641	No	Dwelling	718170	6422432	13784	13090
642	No	Dwelling	718207	6422438	13788	13098
643	No	Building	718317	6422507	13854	13172
644	No	Dwelling	718218	6422513	13863	13173
645	No	Dwelling	718259	6422516	13865	13178
646	No	Building	718305	6422539	13887	13204
647	No	Building	702378	6406932	14490	13391
648	No	Dwelling	710811	6421153	14760	13580
649	No	Building	710769	6421136	14768	13585
650	No	Building	710707	6421208	14862	13679
651	No	Dwelling	713107	6422605	15015	13969
652	No	Dwelling	711841	6422233	15195	14080
653	No	Building	713146	6422746	15132	14091
654	No	Dwelling	712913	6422769	15240	14187
655	No	Building	713180	6422871	15236	14199
656	No	Dwelling	710097	6421460	15407	14208
657	No	Building	701369	6406556	15481	14389
658	No	Dwelling	701349	6406612	15503	14411
659	No	Building	701334	6406564	15516	14425
660	No	Dwelling	720634	6423466	14939	14444
661	No	Dwelling	720706	6423484	14967	14476
662	No	Building	710870	6422233	15656	14500
663	No	Dwelling	710807	6422270	15719	14562
664	No	Building	710755	6422346	15812	14654
665	No	Building	710850	6422400	15810	14658
666	No	Dwelling	712172	6423284	16004	14925
667	No	Dwelling	709532	6422218	16351	15149
668	No	Building	711990	6423455	16235	15151
669	No	Dwelling	709561	6422271	16378	15179
670	No	Dwelling	709664	6422368	16402	15208
671	No	Dwelling	710038	6422633	16425	15248
672	No	Dwelling	709479	6422314	16460	15259
673	No	Dwelling	713004	6423950	16308	15281

Receiver ID	Associated property	Building category	Easting <sup>(1)</sup>	Northing <sup>(1)</sup>	Distance from nearest turbine, m	Distance to project boundary, m
674	No	Building	711929	6423831	16603	15523
675	No	Building	700036	6404522	16877	15830
676	No	Building	699995	6404565	16915	15867
677	No	Building	699985	6404607	16920	15871
678	No	Dwelling	699896	6404598	17010	15961
679	No	Building	699748	6404647	17154	16103
680	No	Building	699562	6402911	17497	16563
681	No	Building	699110	6403771	17862	16850
682	No	Dwelling	699062	6403797	17909	16894
683	No	Building	699196	6402482	17917	17014
684	No	Building	698778	6403951	18176	17152
685	No	Building	698790	6403479	18206	17213
686	No	Dwelling	698628	6403968	18324	17298
687	No	Dwelling	722117	6426388	18063	17619
688	No	Dwelling	712460	6426235	18642	17625
689	No	Dwelling	712350	6426226	18670	17649
690	No	Dwelling	721976	6426636	18281	17827
691	No	Dwelling	721915	6426751	18383	17925
692	No	Dwelling	712308	6426680	19112	18095
693	No	Dwelling	712395	6427357	19723	18720
694	No	Dwelling	712028	6427478	19958	18940
695	No	Dwelling	711175	6428206	20936	19894
696	No	Dwelling	711126	6428354	21091	20050
697	No	Dwelling	708963	6430002	23448	22355
698	No	Dwelling	708939	6430530	23939	22853
699	No	Dwelling	710886	6431776	24394	23385
700	No	Dwelling	707349	6431293	25308	24187
701	No	Dwelling	707374	6431428	25417	24299
702	No	Dwelling	707282	6431398	25432	24310
703	No	Dwelling	709072	6432771	25953	24897
704	No	Dwelling	732939	6374175	19580	16800
729	No	Dwelling	711528	6388504	9077	8636
738	No	Dwelling	711850	6387764	8914	8423
739	No	Dwelling	728208	6400196	5246	4248
800	No	Dwelling	729650	6406559	7274	6946
801	No	Dwelling	732270	6404747	10176	9783
802	No	Dwelling	733024	6405461	10765	10409
803	No	Dwelling	732984	6405620	10701	10351
804	No	Dwelling	731911	6405282	9906	9515
805	No	Dwelling	732151	6404853	10035	9645

Receiver ID	Associated property	Building category	Easting <sup>(1)</sup>	Northing <sup>(1)</sup>	Distance from nearest turbine, m	Distance to project boundary, m
806	No	Dwelling	732018	6404853	9906	9515
807	No	Dwelling	731913	6404588	9872	9469
809	No	Dwelling	731820	6403953	9976	9452
810	No	Dwelling	733011	6403596	10903	10030
811	No	Dwelling	733447	6402035	10173	9347
812	No	Dwelling	732918	6400441	8817	8038

**Notes:**

1. Eastings and northings are defined based on the GDA 1994 Projection MGA55.
2. Property's with no building type assigned are assumed to be dwellings for the purpose of this assessment

# Appendix D

## Wind Turbine Coordinates

## Appendix D Wind turbine coordinates

**Table 8 Wind turbine coordinates**

Wind turbine ID	Easting <sup>(1)</sup>	Northing <sup>(1)</sup>
1	718667	6408657
2	720460	6408151
3	720961	6407653
4	720038	6407501
5	720875	6407242
6	717936	6407659
7	717915	6407161
8	718020	6406687
9	719352	6406368
10	717973	6406093
11	716842	6406071
12	719009	6405402
13	716880	6405596
14	717859	6405183
15	716930	6405033
16	717313	6404596
17	718868	6404828
18	718473	6404359
19	717556	6403986
20	719205	6403489
21	717658	6403084
22	718907	6402916
23	718435	6402255
24	718422	6401661
25	718499	6401092
27	719790	6400853
28	720004	6401401
29	720325	6401818
30	720191	6402240
31	718999	6399668
32	718094	6399877
33	717965	6399214
34	718212	6398528
35	721180	6400313
36	722069	6399075
37	720041	6399141
38	721298	6398698

Wind turbine ID	Easting <sup>(1)</sup>	Northing <sup>(1)</sup>
39	719736	6398554
40	721736	6398128
41	720064	6397888
42	721971	6397674
43	720584	6397507
44	719791	6397428
45	718327	6397393
46	718566	6396835
47	719526	6396937
48	720696	6396855
49	722906	6397178
50	722603	6396777
51	717700	6396491
52	717973	6396027
53	719034	6395985
54	719747	6395818
55	719270	6395302
56	723439	6396359
57	722800	6395939
58	725472	6395720
59	724929	6395428
60	723322	6395311
61	721333	6395048
62	722944	6394835
63	722028	6394158
64	721281	6394209
65	722534	6393496
66	721723	6393457
67	721086	6393286
68	720954	6392762
69	722113	6392671
70	721530	6392165
71	720989	6391731
72	721654	6391188
73	721134	6391081
74	721990	6390465
75	720839	6390442
76	720484	6389981
77	720139	6405647
78	719839	6405240
79	719687	6404573

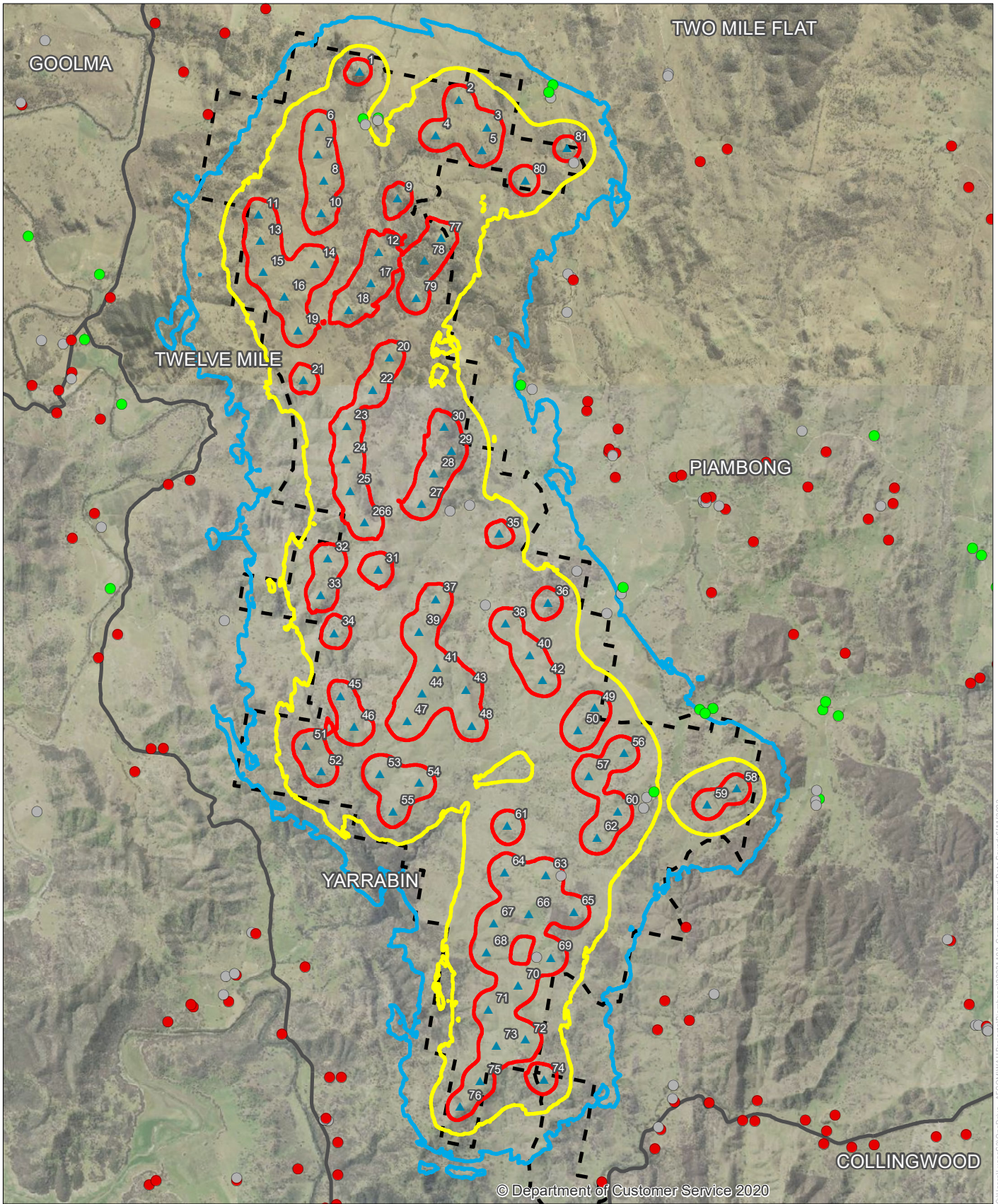
Wind turbine ID	Easting <sup>(1)</sup>	Northing <sup>(1)</sup>
80	721656	6406688
81	722411	6407270
266	718755	6400520

**Notes:**

1. Eastings and northings are defined based on the GDA 1994 Projection MGA55.

# Appendix E

## Noise Contour Maps



$L_{Aeq,10\text{minute}}$  Noise Contour Map at hub wind speed 15 m/s



- ▲ Indicative Turbine Layout
  - Non-associated Dwelling
  - Associated Dwelling
  - Building
  - Project Boundary
- | $L_{Aeq,10\text{minute}}$ dB(A) |
|---------------------------------|
| 35                              |
| 40                              |
| 45                              |

Copyright: Copyright in material relating to the base layers (contextual information) on this page is licensed under a Creative Commons Attribution 4.0 Australia licence © Department of Customer Service 2020, (Digital Cadastral Database and/or Digital Topographic Database).

The terms of Creative Commons Attribution 4.0 Australia License are available from <https://creativecommons.org/licenses/by/4.0/legalcode> (Copyright Licence)

Neither AECOM Australia Pty Ltd (AECOM) nor the Department of Customer Service make any representations or warranties of any kind, about the accuracy, reliability, completeness or suitability or fitness for purpose in relation to the content (in accordance with section 5 of the Copyright Licence). AECOM has prepared this document for the sole use of its Client based on the Client's description of its requirements having regard to the assumptions and other limitations set out in this report, including page 2.

Source:

C:\Users\LucasR21\OneDrive - AECOM\WAH\Projects\Piambong\02021\03\_Contour\_map.mxd Date Saved: 6/17/2023

# Appendix F

Noise compliance  
assessment results

## Appendix F Noise compliance assessment results

**Table 9** Noise compliance assessment.  $L_{Aeq,10\text{ min}}$  and  $L_{Ceq,10\text{ min}}$  noise prediction of wind turbines noise emission assessed against the hub height (150 m) wind speeds noise criteria for receiver locations within three kilometres of the site boundary

Receiver ID	Receiver coordinates <sup>1</sup>		Associated property	Building category <sup>2</sup>	Predicted noise level at rated power wind speed (15 m/s)		Noise criteria		Complies with noise criteria	
	Easting, m	Northing, m			$L_{Aeq,10\text{ minute}}$	$L_{Ceq,10\text{ minute}}$	$L_{Aeq,10\text{ minute}}$	$L_{Ceq,10\text{ minute}}$	$L_{Aeq,10\text{ minute}}$	$L_{Ceq,10\text{ minute}}$
1	724097	6389568	No	Dwelling	29	49	35	60	Yes	Yes
2	723991	6389219	No	Dwelling	30	50	35	60	Yes	Yes
2A	726650	6402173	No	Building	26	50	-	-	-	-
3	722487	6404941	No	Building	34	54	-	-	-	-
4	721579	6402991	Yes	Dwelling	35	54	42	60	Yes	Yes
5	723974	6395661	Yes	Dwelling	41	57	42	60	Yes	Yes
6	718736	6407795	Yes	Dwelling	41	58	42	60	Yes	Yes
7	716230	6398756	No	Building	34	53	-	-	-	-
8	722426	6405006	No	Building	34	54	-	-	-	-
9	722522	6404889	No	Dwelling	34	54	35	60	Yes	Yes
10	722412	6404306	No	Building	34	54	-	-	-	-
11	721862	6392680	Yes	Building	52	62	-	-	-	-
12	723787	6395367	Yes	Building	43	58	-	-	-	-
13	723842	6395551	Yes	Building	42	58	-	-	-	-
15	724056	6389602	No	Building	29	49	-	-	-	-
16	722299	6394146	Yes	Building	52	61	-	-	-	-
17	722586	6399641	Yes	Building	39	55	-	-	-	-
18	723129	6398877	No	Building	38	55	-	-	-	-
19	723387	6399235	No	Building	36	54	-	-	-	-
20	723423	6399338	Yes	Dwelling	35	54	42	60	Yes	Yes

Receiver ID	Receiver coordinates <sup>1</sup>		Associated property	Building category <sup>2</sup>	Predicted noise level at rated power wind speed (15 m/s)		Noise criteria		Complies with noise criteria	
	Easting, m	Northing, m			L <sub>Aeq,10minute</sub>	L <sub>Ceq,10minute</sub>	L <sub>Aeq,10minute</sub>	L <sub>Ceq,10minute</sub>	L <sub>Aeq,10minute</sub>	L <sub>Ceq,10minute</sub>
21	720939	6399026	Yes	Building	43	59	-	-	-	-
22	720652	6400826	Yes	Building	42	58	-	-	-	-
23	720298	6400722	Yes	Building	43	59	-	-	-	-
24	721779	6402920	No	Building	35	54	-	-	-	-
25	718772	6407702	Yes	Building	41	57	-	-	-	-
26	718998	6407813	Yes	Dwelling	41	57	42	60	Yes	Yes
27	718994	6407774	Yes	Building	41	57	-	-	-	-
28	724559	6393216	No	Dwelling	33	52	35	60	Yes	Yes
29	715940	6407875	No	Dwelling	33	51	35	60	Yes	Yes
30	724169	6391885	No	Dwelling	32	51	35	60	Yes	Yes
30A	723136	6387872	No	Building	28	48	-	-	-	-
31	723213	6387910	No	Building	29	49	-	-	-	-
32	725042	6397163	Yes	Dwelling	35	53	42	60	Yes	Yes
33	724901	6397075	Yes	Dwelling	36	54	42	60	Yes	Yes
34	724802	6397144	Yes	Dwelling	36	54	42	60	Yes	Yes
35	724309	6390124	No	Building	29	49	-	-	-	-
36	722645	6387804	Yes	Dwelling	29	49	42	60	Yes	Yes
37	723039	6388619	No	Dwelling	30	49	35	60	Yes	Yes
38	724354	6390067	No	Dwelling	29	49	35	60	Yes	Yes
39	721530	6388033	No	Dwelling	32	51	35	60	Yes	Yes
40	723171	6387713	No	Dwelling	28	49	35	60	Yes	Yes
41	722597	6387668	No	Building	29	49	-	-	-	-
42	724325	6390369	No	Building	30	50	-	-	-	-

Receiver ID	Receiver coordinates <sup>1</sup>		Associated property	Building category <sup>2</sup>	Predicted noise level at rated power wind speed (15 m/s)		Noise criteria		Complies with noise criteria	
	Easting, m	Northing, m			L <sub>Aeq,10minute</sub>	L <sub>Ceq,10minute</sub>	L <sub>Aeq,10minute</sub>	L <sub>Ceq,10minute</sub>	L <sub>Aeq,10minute</sub>	L <sub>Ceq,10minute</sub>
43	727077	6401786	No	Dwelling	26	50	35	60	Yes	Yes
44	720975	6388011	No	Dwelling	30	49	35	60	Yes	Yes
45	715745	6408281	No	Dwelling	31	50	35	60	Yes	Yes
46	724344	6401335	No	Dwelling	30	51	35	60	Yes	Yes
47	721026	6387911	No	Dwelling	30	49	35	60	Yes	Yes
48	723294	6401771	No	Dwelling	31	52	35	60	Yes	Yes
49	723237	6401727	No	Building	32	52	-	-	-	-
50	725012	6399250	No	Dwelling	31	52	35	60	Yes	Yes
51	722081	6408275	Yes	Dwelling	37	54	42	60	Yes	Yes
52	724478	6401371	No	Dwelling	30	51	35	60	Yes	Yes
53	722153	6408406	Yes	Dwelling	36	54	42	60	Yes	Yes
54	722118	6408177	Yes	Building	38	55	-	-	-	-
55	723159	6401786	No	Dwelling	31	52	35	60	Yes	Yes
56	722534	6407003	Yes	Building	45	59	-	-	-	-
57	723168	6401844	No	Dwelling	31	52	35	60	Yes	Yes
58	724038	6391362	No	Dwelling	32	51	35	60	Yes	Yes
59	726000	6401606	No	Dwelling	27	50	35	60	Yes	Yes
60	723331	6402199	No	Dwelling	31	52	35	60	Yes	Yes
61	724877	6400887	No	Building	30	51	-	-	-	-
62	724914	6400876	No	Building	30	51	-	-	-	-
63	715495	6408634	No	Dwelling	30	50	35	60	Yes	Yes
64	716977	6409785	No	Dwelling	31	50	35	60	Yes	Yes
65	724866	6400920	No	Building	30	51	-	-	-	-

Receiver ID	Receiver coordinates <sup>1</sup>		Associated property	Building category <sup>2</sup>	Predicted noise level at rated power wind speed (15 m/s)		Noise criteria		Complies with noise criteria	
	Easting, m	Northing, m			L <sub>Aeq,10minute</sub>	L <sub>Ceq,10minute</sub>	L <sub>Aeq,10minute</sub>	L <sub>Ceq,10minute</sub>	L <sub>Aeq,10minute</sub>	L <sub>Ceq,10minute</sub>
66	725151	6400821	No	Building	29	51	-	-	-	-
67	724914	6400956	No	Dwelling	29	51	35	60	Yes	Yes
68	725265	6400756	No	Dwelling	29	51	35	60	Yes	Yes
69	724973	6390048	No	Dwelling	28	49	35	60	Yes	Yes
70	725008	6400970	No	Dwelling	29	51	35	60	Yes	Yes
71	726755	6401155	No	Dwelling	27	50	35	60	Yes	Yes
72	720410	6387720	No	Dwelling	29	49	35	60	Yes	Yes
73	716238	6409343	No	Dwelling	29	49	35	60	Yes	Yes
74	727944	6402076	Yes	Dwelling	22	46	42	60	Yes	Yes
75	725772	6400165	No	Dwelling	29	51	35	60	Yes	Yes
76	726909	6395680	No	Building	32	50	-	-	-	-
77	726893	6395495	No	Building	32	51	-	-	-	-
78	725062	6392012	No	Building	31	51	-	-	-	-
79	726897	6395418	No	Building	32	51	-	-	-	-
80	715128	6396439	No	Dwelling	30	50	35	60	Yes	Yes
81	720578	6387352	No	Dwelling	28	49	35	60	Yes	Yes
82	724807	6407031	No	Dwelling	27	48	35	60	Yes	Yes
83	726958	6395525	Yes	Dwelling	32	51	42	60	Yes	Yes
84	720689	6387212	No	Dwelling	29	49	35	60	Yes	Yes
85	724615	6391536	No	Dwelling	31	50	35	60	Yes	Yes
86	725575	6389728	No	Dwelling	27	48	35	60	Yes	Yes
87	727021	6397137	Yes	Dwelling	30	51	42	60	Yes	Yes
88	714909	6396436	No	Dwelling	29	50	35	60	Yes	Yes

Receiver ID	Receiver coordinates <sup>1</sup>		Associated property	Building category <sup>2</sup>	Predicted noise level at rated power wind speed (15 m/s)		Noise criteria		Complies with noise criteria	
	Easting, m	Northing, m			L <sub>Aeq,10minute</sub>	L <sub>Ceq,10minute</sub>	L <sub>Aeq,10minute</sub>	L <sub>Ceq,10minute</sub>	L <sub>Aeq,10minute</sub>	L <sub>Ceq,10minute</sub>
89	720681	6387140	No	Dwelling	29	49	35	60	Yes	Yes
90	727073	6397284	Yes	Dwelling	30	51	42	60	Yes	Yes
91	715610	6401275	No	Dwelling	33	52	35	60	Yes	Yes
92	720126	6387343	No	Dwelling	27	48	35	60	Yes	Yes
93	716782	6410617	No	Dwelling	28	49	35	60	Yes	Yes
94	725796	6389709	No	Dwelling	27	48	35	60	Yes	Yes
95	727297	6397033	Yes	Dwelling	29	50	42	60	Yes	Yes
96	725297	6407248	No	Dwelling	26	48	35	60	Yes	Yes
97	718340	6390508	No	Dwelling	29	49	35	60	Yes	Yes
98	725840	6390088	No	Dwelling	25	47	35	60	Yes	Yes
99	715218	6401202	No	Dwelling	32	52	35	60	Yes	Yes
100	714987	6409519	No	Dwelling	28	49	35	60	Yes	Yes
101	728315	6401141	No	Dwelling	22	46	35	60	Yes	Yes
102	719640	6387378	No	Dwelling	26	47	35	60	Yes	Yes
103	728068	6400822	No	Building	23	47	-	-	-	-
104	714309	6398494	No	Dwelling	30	51	35	60	Yes	Yes
105	714618	6396021	No	Dwelling	29	50	35	60	Yes	Yes
106	718125	6390507	No	Dwelling	28	49	35	60	Yes	Yes
107	727838	6400574	No	Dwelling	26	50	35	60	Yes	Yes
108	717800	6411171	Yes	Dwelling	28	49	42	60	Yes	Yes
109	718276	6389340	No	Dwelling	27	48	35	60	Yes	Yes
110	722852	6386125	No	Building	27	50	-	-	-	-
111	726489	6398491	No	Dwelling	28	50	35	60	Yes	Yes

Receiver ID	Receiver coordinates <sup>1</sup>		Associated property	Building category <sup>2</sup>	Predicted noise level at rated power wind speed (15 m/s)		Noise criteria		Complies with noise criteria	
	Easting, m	Northing, m			L <sub>Aeq,10minute</sub>	L <sub>Ceq,10minute</sub>	L <sub>Aeq,10minute</sub>	L <sub>Ceq,10minute</sub>	L <sub>Aeq,10minute</sub>	L <sub>Ceq,10minute</sub>
112	728287	6400853	No	Dwelling	22	46	35	60	Yes	Yes
113	722862	6386089	No	Building	27	50	-	-	-	-
114	722875	6386090	No	Building	27	50	-	-	-	-
115	718273	6388745	No	Dwelling	26	48	35	60	Yes	Yes
116	719149	6387482	No	Dwelling	25	47	35	60	Yes	Yes
117	718593	6388054	No	Building	26	47	-	-	-	-
118	722882	6385946	No	Dwelling	26	50	35	60	Yes	Yes
119	718103	6389726	No	Building	28	48	-	-	-	-
120	716404	6411069	No	Dwelling	27	48	35	60	Yes	Yes
121	713966	6398072	No	Dwelling	29	51	35	60	Yes	Yes
122	714174	6399326	Yes	Dwelling	29	51	42	60	Yes	Yes
123	718067	6389767	No	Dwelling	28	48	35	60	Yes	Yes
124	718029	6389743	No	Building	28	48	-	-	-	-
125	714178	6404568	No	Dwelling	30	50	35	60	Yes	Yes
126	717689	6392493	No	Dwelling	30	51	35	60	Yes	Yes
127	718974	6411162	Yes	Dwelling	29	50	42	60	Yes	Yes
128	716240	6411125	No	Dwelling	27	49	35	60	Yes	Yes
129	718336	6388068	No	Dwelling	25	47	35	60	Yes	Yes
130	716798	6393097	No	Dwelling	30	50	35	60	Yes	Yes
131	727422	6398155	No	Dwelling	28	51	35	60	Yes	Yes
132	716724	6393123	No	Building	30	51	-	-	-	-
133	719106	6411173	No	Building	29	50	-	-	-	-
134	719020	6411251	Yes	Dwelling	29	50	42	60	Yes	Yes

Receiver ID	Receiver coordinates <sup>1</sup>		Associated property	Building category <sup>2</sup>	Predicted noise level at rated power wind speed (15 m/s)		Noise criteria		Complies with noise criteria	
	Easting, m	Northing, m			L <sub>Aeq,10minute</sub>	L <sub>Ceq,10minute</sub>	L <sub>Aeq,10minute</sub>	L <sub>Ceq,10minute</sub>	L <sub>Aeq,10minute</sub>	L <sub>Ceq,10minute</sub>
135	714012	6400433	No	Building	29	51	-	-	-	-
136	713981	6404994	Yes	Dwelling	30	50	42	60	Yes	Yes
137	718536	6411509	No	Dwelling	28	49	35	60	Yes	Yes
138	726704	6389736	No	Dwelling	24	47	35	60	Yes	Yes
140	720418	6386620	No	Dwelling	28	49	35	60	Yes	Yes
140A	715276	6410606	No	Building	26	48	-	-	-	-
141	713887	6400683	No	Dwelling	29	51	35	60	Yes	Yes
142	720285	6385926	No	Dwelling	24	47	35	60	Yes	Yes
143	717270	6391290	No	Dwelling	28	49	35	60	Yes	Yes
144	724231	6408572	No	Building	29	49	-	-	-	-
145	717556	6388856	No	Dwelling	26	48	35	60	Yes	Yes
146	724240	6408617	No	Building	28	49	-	-	-	-
147	714376	6402650	Yes	Dwelling	30	51	42	60	Yes	Yes
148	715445	6411041	No	Dwelling	25	48	35	60	Yes	Yes
149	719207	6386507	No	Dwelling	24	46	35	60	Yes	Yes
150	727040	6389302	No	Dwelling	24	47	35	60	Yes	Yes
151	713710	6403815	Yes	Dwelling	29	50	42	60	Yes	Yes
152	713491	6400235	No	Dwelling	29	51	35	60	Yes	Yes
153	727092	6389540	No	Dwelling	24	47	35	60	Yes	Yes
154	724522	6385557	No	Building	21	45	-	-	-	-
155	724590	6385588	No	Dwelling	21	45	35	60	Yes	Yes
156	727243	6389823	No	Dwelling	24	47	35	60	Yes	Yes
157	730063	6405983	No	Dwelling	18	44	35	60	Yes	Yes

Receiver ID	Receiver coordinates <sup>1</sup>		Associated property	Building category <sup>2</sup>	Predicted noise level at rated power wind speed (15 m/s)		Noise criteria		Complies with noise criteria	
	Easting, m	Northing, m			L <sub>Aeq,10minute</sub>	L <sub>Ceq,10minute</sub>	L <sub>Aeq,10minute</sub>	L <sub>Ceq,10minute</sub>	L <sub>Aeq,10minute</sub>	L <sub>Ceq,10minute</sub>
158	718256	6387077	No	Dwelling	23	46	35	60	Yes	Yes
159	717767	6387289	No	Dwelling	24	47	35	60	Yes	Yes
160	719606	6411784	No	Dwelling	28	49	35	60	Yes	Yes
161	713468	6403806	No	Dwelling	29	50	35	60	Yes	Yes
162	718253	6388209	No	Dwelling	25	47	35	60	Yes	Yes
162A	721773	6411560	No	Building	28	50	-	-	-	-
163	718044	6388141	No	Dwelling	25	47	35	60	Yes	Yes
163A	716410	6392373	No	Building	28	50	-	-	-	-
164	716448	6392349	No	Dwelling	28	50	35	60	Yes	Yes
165	722093	6411573	No	Building	27	49	-	-	-	-
166	721797	6411636	No	Building	28	50	-	-	-	-
167	722174	6411580	No	Building	26	49	-	-	-	-
168	713327	6403739	No	Building	29	51	-	-	-	-
169	713481	6403223	No	Dwelling	28	50	35	60	Yes	Yes
170	713993	6402378	No	Dwelling	30	51	35	60	Yes	Yes
171	712694	6405682	Yes	Dwelling	28	50	42	60	Yes	Yes
172	716254	6392336	No	Building	28	50	-	-	-	-
173	713472	6403104	No	Building	28	50	-	-	-	-
174	721847	6411739	Yes	Dwelling	27	49	42	60	Yes	Yes
175	727545	6389245	No	Dwelling	23	47	35	60	Yes	Yes
176	713001	6409217	No	Building	26	49	-	-	-	-
177	718998	6412346	No	Dwelling	27	50	35	60	Yes	Yes
178	718956	6412405	No	Building	27	50	-	-	-	-

Receiver ID	Receiver coordinates <sup>1</sup>		Associated property	Building category <sup>2</sup>	Predicted noise level at rated power wind speed (15 m/s)		Noise criteria		Complies with noise criteria	
	Easting, m	Northing, m			L <sub>Aeq,10minute</sub>	L <sub>Ceq,10minute</sub>	L <sub>Aeq,10minute</sub>	L <sub>Ceq,10minute</sub>	L <sub>Aeq,10minute</sub>	L <sub>Ceq,10minute</sub>
179	718576	6412583	No	Building	26	49	-	-	-	-
180	729342	6407309	No	Dwelling	18	44	35	60	Yes	Yes
181	718930	6412509	No	Building	27	50	-	-	-	-
182	712582	6408048	No	Dwelling	26	49	35	60	Yes	Yes
183	723757	6411182	No	Building	24	47	-	-	-	-
184	722187	6411906	No	Dwelling	26	49	35	60	Yes	Yes
185	716221	6391997	No	Building	28	49	-	-	-	-
186	723796	6411183	No	Building	24	47	-	-	-	-
187	712557	6408093	No	Building	26	49	-	-	-	-
188	723823	6411184	No	Building	24	47	-	-	-	-
189	713242	6402895	No	Dwelling	28	50	35	60	Yes	Yes
190	712937	6403806	No	Building	28	50	-	-	-	-
191	721616	6412078	No	Building	26	49	-	-	-	-
192	723823	6411209	No	Building	24	47	-	-	-	-
193	729723	6400051	Yes	Dwelling	21	45	42	60	Yes	Yes
194	721551	6412107	No	Building	26	49	-	-	-	-
195	716306	6391873	No	Dwelling	28	50	35	60	Yes	Yes
196	713311	6410518	No	Dwelling	23	46	35	60	Yes	Yes
197	712852	6395298	No	Building	24	47	-	-	-	-
198	723920	6411258	No	Building	24	47	-	-	-	-
199	726052	6385950	No	Building	19	44	-	-	-	-
200	730453	6401561	No	Dwelling	19	45	35	60	Yes	Yes
201	727943	6389284	No	Dwelling	23	47	35	60	Yes	Yes

Receiver ID	Receiver coordinates <sup>1</sup>		Associated property	Building category <sup>2</sup>	Predicted noise level at rated power wind speed (15 m/s)		Noise criteria		Complies with noise criteria	
	Easting, m	Northing, m			L <sub>Aeq,10minute</sub>	L <sub>Ceq,10minute</sub>	L <sub>Aeq,10minute</sub>	L <sub>Ceq,10minute</sub>	L <sub>Aeq,10minute</sub>	L <sub>Ceq,10minute</sub>
202	723841	6411461	No	Dwelling	24	47	35	60	Yes	Yes
203	713211	6402485	No	Dwelling	28	50	35	60	Yes	Yes
204	729882	6399920	Yes	Dwelling	20	45	42	60	Yes	Yes
205	713035	6410388	No	Dwelling	25	48	35	60	Yes	Yes
206	719155	6412784	No	Building	26	49	-	-	-	-
207	716451	6388694	No	Building	25	48	-	-	-	-
208	719962	6412512	No	Building	26	49	-	-	-	-
209	722748	6412075	No	Dwelling	25	48	35	60	Yes	Yes
210	716453	6388641	No	Dwelling	25	48	35	60	Yes	Yes
211	713022	6410433	No	Building	24	48	-	-	-	-
212	713002	6410409	No	Building	24	48	-	-	-	-
213	723696	6411635	No	Dwelling	24	47	35	60	Yes	Yes
214	723653	6411671	No	Building	24	47	-	-	-	-
215	720000	6412559	Yes	Dwelling	26	49	42	60	Yes	Yes
216	712993	6410495	No	Building	24	48	-	-	-	-
217	724240	6411275	No	Dwelling	24	47	35	60	Yes	Yes
218	712998	6410543	No	Building	24	48	-	-	-	-
219	723655	6411751	No	Building	24	47	-	-	-	-
220	720167	6412582	No	Building	26	49	-	-	-	-
221	720107	6412606	No	Building	26	49	-	-	-	-
222	712765	6402984	No	Dwelling	28	50	35	60	Yes	Yes
223	723789	6411767	No	Dwelling	24	47	35	60	Yes	Yes
224	713053	6410780	No	Dwelling	24	48	35	60	Yes	Yes

Receiver ID	Receiver coordinates <sup>1</sup>		Associated property	Building category <sup>2</sup>	Predicted noise level at rated power wind speed (15 m/s)		Noise criteria		Complies with noise criteria	
	Easting, m	Northing, m			L <sub>Aeq,10minute</sub>	L <sub>Ceq,10minute</sub>	L <sub>Aeq,10minute</sub>	L <sub>Ceq,10minute</sub>	L <sub>Aeq,10minute</sub>	L <sub>Ceq,10minute</sub>
225	715626	6391823	No	Dwelling	27	49	35	60	Yes	Yes
226	715667	6391782	No	Dwelling	27	49	35	60	Yes	Yes
227	722833	6412291	No	Building	25	48	-	-	-	-
228	714029	6411698	No	Dwelling	24	48	35	60	Yes	Yes
229	713871	6411606	No	Dwelling	24	48	35	60	Yes	Yes
230	713911	6411637	No	Dwelling	24	48	35	60	Yes	Yes
231	729270	6392997	No	Building	22	46	-	-	-	-
232	717442	6386348	No	Dwelling	22	47	35	60	Yes	Yes
233	729331	6392969	No	Dwelling	22	46	35	60	Yes	Yes
234	722195	6383736	No	Dwelling	18	43	35	60	Yes	Yes
235	729861	6397712	No	Dwelling	22	46	35	60	Yes	Yes
236	724340	6411630	No	Building	23	47	-	-	-	-
237	729684	6397616	No	Dwelling	23	47	35	60	Yes	Yes
237A	720199	6412928	No	Building	26	49	-	-	-	-
238	720250	6412927	No	Building	26	49	-	-	-	-
239	724441	6411646	No	Building	23	47	-	-	-	-
240	723708	6412190	No	Dwelling	23	46	35	60	Yes	Yes
241	724463	6411656	No	Building	23	47	-	-	-	-
242	720170	6412998	Yes	Dwelling	26	49	42	60	Yes	Yes
243	730153	6399353	Yes	Dwelling	20	45	42	60	Yes	Yes
244	724484	6411671	No	Building	23	47	-	-	-	-
245	722034	6383572	No	Building	18	43	-	-	-	-
246	717207	6386177	No	Dwelling	23	47	35	60	Yes	Yes

Receiver ID	Receiver coordinates <sup>1</sup>		Associated property	Building category <sup>2</sup>	Predicted noise level at rated power wind speed (15 m/s)		Noise criteria		Complies with noise criteria	
	Easting, m	Northing, m			L <sub>Aeq,10minute</sub>	L <sub>Ceq,10minute</sub>	L <sub>Aeq,10minute</sub>	L <sub>Ceq,10minute</sub>	L <sub>Aeq,10minute</sub>	L <sub>Ceq,10minute</sub>
247	722083	6383446	No	Dwelling	18	43	35	60	Yes	Yes
248	715210	6391510	No	Dwelling	27	49	35	60	Yes	Yes
249	730166	6397959	No	Dwelling	21	45	35	60	Yes	Yes
250	722242	6383358	No	Dwelling	17	43	35	60	Yes	Yes
251	723090	6412783	No	Dwelling	21	45	35	60	Yes	Yes
252	723805	6412561	No	Building	23	47	-	-	-	-
253	723802	6412575	No	Building	23	47	-	-	-	-
254	723842	6412557	No	Dwelling	23	47	35	60	Yes	Yes
255	721478	6383291	No	Dwelling	17	43	35	60	Yes	Yes
256	723844	6412590	No	Building	23	47	-	-	-	-
257	730277	6398154	No	Dwelling	21	45	35	60	Yes	Yes
258	723219	6383278	No	Dwelling	17	43	35	60	Yes	Yes
259	731044	6399921	No	Dwelling	19	44	35	60	Yes	Yes
260	723020	6413026	No	Dwelling	22	46	35	60	Yes	Yes
261	729069	6389437	No	Dwelling	21	46	35	60	Yes	Yes
262	721564	6413379	No	Building	24	48	-	-	-	-
263	730311	6398308	No	Dwelling	21	46	35	60	Yes	Yes
264	730446	6398920	No	Dwelling	20	45	35	60	Yes	Yes
265	724432	6412364	No	Dwelling	23	47	35	60	Yes	Yes
266	721562	6383110	No	Dwelling	17	43	35	60	Yes	Yes
267	723835	6412762	No	Building	23	47	-	-	-	-
268	730323	6398421	No	Dwelling	21	46	35	60	Yes	Yes
269	721254	6383122	No	Building	17	43	-	-	-	-

Receiver ID	Receiver coordinates <sup>1</sup>		Associated property	Building category <sup>2</sup>	Predicted noise level at rated power wind speed (15 m/s)		Noise criteria		Complies with noise criteria	
	Easting, m	Northing, m			L <sub>Aeq,10minute</sub>	L <sub>Ceq,10minute</sub>	L <sub>Aeq,10minute</sub>	L <sub>Ceq,10minute</sub>	L <sub>Aeq,10minute</sub>	L <sub>Ceq,10minute</sub>
270	730413	6398747	No	Dwelling	20	45	35	60	Yes	Yes
271	725056	6411950	No	Building	23	47	-	-	-	-
272	729658	6391819	No	Dwelling	21	45	35	60	Yes	Yes
273	725059	6411982	No	Dwelling	23	47	35	60	Yes	Yes
274	725157	6411888	No	Building	23	48	-	-	-	-
275	730381	6398547	No	Dwelling	20	45	35	60	Yes	Yes
276	723226	6383026	No	Building	17	43	-	-	-	-
277	721303	6382963	No	Dwelling	17	43	35	60	Yes	Yes
278	724329	6412779	No	Dwelling	22	47	35	60	Yes	Yes
279	715001	6388639	No	Dwelling	25	48	35	60	Yes	Yes
280	729776	6391452	No	Building	20	45	-	-	-	-
281	718198	6414530	No	Building	24	49	-	-	-	-
282	720493	6382927	No	Dwelling	19	44	35	60	Yes	Yes
283	729834	6391448	No	Building	20	45	-	-	-	-
284	729605	6389477	No	Dwelling	21	46	35	60	Yes	Yes
285	714874	6388571	No	Dwelling	25	49	35	60	Yes	Yes
286	723578	6413484	No	Dwelling	22	47	35	60	Yes	Yes
287	729968	6391423	No	Dwelling	20	45	35	60	Yes	Yes
288	724027	6413297	No	Dwelling	22	46	35	60	Yes	Yes
289	718236	6414684	No	Building	24	48	-	-	-	-
290	729976	6391364	No	Building	21	45	-	-	-	-
291	724744	6412901	No	Dwelling	22	47	35	60	Yes	Yes
292	724036	6413334	No	Dwelling	21	46	35	60	Yes	Yes

Receiver ID	Receiver coordinates <sup>1</sup>		Associated property	Building category <sup>2</sup>	Predicted noise level at rated power wind speed (15 m/s)		Noise criteria		Complies with noise criteria	
	Easting, m	Northing, m			L <sub>Aeq,10minute</sub>	L <sub>Ceq,10minute</sub>	L <sub>Aeq,10minute</sub>	L <sub>Ceq,10minute</sub>	L <sub>Aeq,10minute</sub>	L <sub>Ceq,10minute</sub>
293	729998	6391383	No	Building	20	45	-	-	-	-
294	710475	6405239	No	Building	23	48	-	-	-	-
295	729995	6391345	No	Building	21	45	-	-	-	-
296	714514	6413854	No	Dwelling	22	47	35	60	Yes	Yes
297	724718	6412957	No	Building	22	47	-	-	-	-
298	710908	6409906	No	Building	23	48	-	-	-	-
299	711309	6410905	No	Building	23	48	-	-	-	-
300	714550	6413937	No	Dwelling	22	47	35	60	Yes	Yes
301	710856	6409831	No	Dwelling	23	48	35	60	Yes	Yes
302	712812	6412736	No	Dwelling	23	48	35	60	Yes	Yes
303	724414	6413313	No	Dwelling	22	47	35	60	Yes	Yes
304	710778	6403893	No	Building	25	49	-	-	-	-
305	712736	6412777	No	Dwelling	23	48	35	60	Yes	Yes
306	710781	6403606	No	Building	25	49	-	-	-	-
307	724505	6413372	No	Dwelling	22	47	35	60	Yes	Yes
308	710325	6396310	No	Building	22	47	-	-	-	-
309	724474	6413405	No	Dwelling	21	46	35	60	Yes	Yes
310	732089	6399797	No	Dwelling	18	44	35	60	Yes	Yes
311	731565	6395637	No	Dwelling	20	45	35	60	Yes	Yes
312	731720	6399049	No	Dwelling	18	44	35	60	Yes	Yes
313	710286	6396222	No	Building	22	47	-	-	-	-
314	717862	6415080	No	Building	23	48	-	-	-	-
315	717826	6415082	No	Dwelling	23	48	35	60	Yes	Yes

Receiver ID	Receiver coordinates <sup>1</sup>		Associated property	Building category <sup>2</sup>	Predicted noise level at rated power wind speed (15 m/s)		Noise criteria		Complies with noise criteria	
	Easting, m	Northing, m			L <sub>Aeq,10minute</sub>	L <sub>Ceq,10minute</sub>	L <sub>Aeq,10minute</sub>	L <sub>Ceq,10minute</sub>	L <sub>Aeq,10minute</sub>	L <sub>Ceq,10minute</sub>
316	725229	6412990	No	Dwelling	22	47	35	60	Yes	Yes
317	710222	6396151	No	Building	22	47	-	-	-	-
318	710248	6396022	No	Dwelling	23	48	35	60	Yes	Yes
319	724658	6413532	No	Dwelling	21	46	35	60	Yes	Yes
320	710091	6396378	No	Building	22	47	-	-	-	-
321	717411	6415265	No	Dwelling	23	48	35	60	Yes	Yes
322	710010	6396404	No	Building	22	47	-	-	-	-
323	717605	6415355	No	Dwelling	23	48	35	60	Yes	Yes
324	730256	6390564	No	Building	19	44	-	-	-	-
325	724801	6413621	No	Dwelling	21	46	35	60	Yes	Yes
326	730370	6390581	No	Dwelling	19	44	35	60	Yes	Yes
327	730457	6389898	No	Dwelling	20	45	35	60	Yes	Yes
328	724850	6413739	No	Dwelling	20	46	35	60	Yes	Yes
329	732568	6399682	No	Dwelling	17	44	35	60	Yes	Yes
330	730479	6390332	No	Building	19	44	-	-	-	-
331	730484	6390383	No	Dwelling	19	44	35	60	Yes	Yes
332	724900	6413778	No	Dwelling	18	44	35	60	Yes	Yes
333	709663	6396587	No	Building	22	48	-	-	-	-
334	715286	6415262	No	Dwelling	21	47	35	60	Yes	Yes
335	730730	6390747	No	Dwelling	19	44	35	60	Yes	Yes
336	716211	6415595	No	Building	22	48	-	-	-	-
337	718366	6382608	No	Dwelling	21	47	35	60	Yes	Yes
338	730758	6390758	No	Building	19	44	-	-	-	-

Receiver ID	Receiver coordinates <sup>1</sup>		Associated property	Building category <sup>2</sup>	Predicted noise level at rated power wind speed (15 m/s)		Noise criteria		Complies with noise criteria	
	Easting, m	Northing, m			L <sub>Aeq,10minute</sub>	L <sub>Ceq,10minute</sub>	L <sub>Aeq,10minute</sub>	L <sub>Ceq,10minute</sub>	L <sub>Aeq,10minute</sub>	L <sub>Ceq,10minute</sub>
339	716241	6415606	No	Dwelling	22	48	35	60	Yes	Yes
340	709548	6396640	No	Building	22	48	-	-	-	-
341	730774	6390749	No	Building	19	44	-	-	-	-
342	725194	6413817	No	Building	18	44	-	-	-	-
343	709518	6396686	No	Building	22	48	-	-	-	-
344	709461	6396614	No	Building	22	48	-	-	-	-
345	709329	6405353	No	Building	22	47	-	-	-	-
346	709328	6405308	No	Building	22	47	-	-	-	-
347	709514	6408512	No	Dwelling	21	46	35	60	Yes	Yes
348	725312	6413898	No	Dwelling	18	43	35	60	Yes	Yes
349	718494	6382365	No	Building	21	47	-	-	-	-
350	709391	6396649	No	Dwelling	22	48	35	60	Yes	Yes
351	730999	6390737	No	Building	18	44	-	-	-	-
352	731031	6390771	No	Dwelling	18	44	35	60	Yes	Yes
353	726402	6382198	No	Dwelling	16	42	35	60	Yes	Yes
354	717762	6416054	No	Building	22	48	-	-	-	-
355	714550	6415376	No	Dwelling	21	47	35	60	Yes	Yes
356	714000	6386553	No	Dwelling	21	47	35	60	Yes	Yes
357	717941	6416086	No	Dwelling	22	48	35	60	Yes	Yes
358	717885	6416094	No	Dwelling	22	48	35	60	Yes	Yes
359	731756	6391737	No	Building	18	43	-	-	-	-
360	717811	6416139	No	Building	22	48	-	-	-	-
361	725490	6414112	No	Dwelling	17	43	35	60	Yes	Yes

Receiver ID	Receiver coordinates <sup>1</sup>		Associated property	Building category <sup>2</sup>	Predicted noise level at rated power wind speed (15 m/s)		Noise criteria		Complies with noise criteria	
	Easting, m	Northing, m			L <sub>Aeq,10minute</sub>	L <sub>Ceq,10minute</sub>	L <sub>Aeq,10minute</sub>	L <sub>Ceq,10minute</sub>	L <sub>Aeq,10minute</sub>	L <sub>Ceq,10minute</sub>
362	718815	6381928	No	Building	20	47	-	-	-	-
363	725543	6414112	No	Building	17	43	-	-	-	-
364	713869	6386517	No	Dwelling	21	47	35	60	Yes	Yes
365	714170	6415357	No	Dwelling	20	47	35	60	Yes	Yes
366	714278	6415446	No	Dwelling	20	47	35	60	Yes	Yes
367	714383	6415506	No	Dwelling	20	46	35	60	Yes	Yes
368	714279	6415472	No	Dwelling	20	46	35	60	Yes	Yes
369	708844	6405898	No	Building	22	48	-	-	-	-
370	731899	6391672	No	Dwelling	17	43	35	60	Yes	Yes
371	726804	6413139	No	Dwelling	18	44	35	60	Yes	Yes
372	731961	6391692	No	Dwelling	17	43	35	60	Yes	Yes
373	714275	6415555	No	Dwelling	20	47	35	60	Yes	Yes
374	732052	6391819	No	Building	17	43	-	-	-	-
375	721600	6380839	No	Dwelling	19	46	35	60	Yes	Yes
376	708715	6405912	No	Dwelling	22	48	35	60	Yes	Yes
377	714290	6415624	No	Building	20	47	-	-	-	-
378	721493	6415737	No	Dwelling	21	47	35	60	Yes	Yes
379	714452	6415725	No	Dwelling	21	47	35	60	Yes	Yes
380	714300	6415651	No	Building	21	47	-	-	-	-
381	723240	6380846	No	Dwelling	15	42	35	60	Yes	Yes
382	714462	6415750	No	Dwelling	21	47	35	60	Yes	Yes
383	721757	6415748	No	Dwelling	21	47	35	60	Yes	Yes
384	731670	6390735	No	Building	18	44	-	-	-	-

Receiver ID	Receiver coordinates <sup>1</sup>		Associated property	Building category <sup>2</sup>	Predicted noise level at rated power wind speed (15 m/s)		Noise criteria		Complies with noise criteria	
	Easting, m	Northing, m			L <sub>Aeq,10minute</sub>	L <sub>Ceq,10minute</sub>	L <sub>Aeq,10minute</sub>	L <sub>Ceq,10minute</sub>	L <sub>Aeq,10minute</sub>	L <sub>Ceq,10minute</sub>
385	714224	6415707	No	Dwelling	20	47	35	60	Yes	Yes
386	714159	6415674	No	Dwelling	20	47	35	60	Yes	Yes
387	721781	6415828	No	Dwelling	21	47	35	60	Yes	Yes
388	731732	6390688	No	Dwelling	18	43	35	60	Yes	Yes
389	721456	6415918	No	Dwelling	21	47	35	60	Yes	Yes
390	714174	6415780	No	Dwelling	20	47	35	60	Yes	Yes
391	731734	6390659	No	Building	18	43	-	-	-	-
392	732071	6391277	No	Dwelling	17	43	35	60	Yes	Yes
393	714058	6415720	No	Dwelling	20	47	35	60	Yes	Yes
394	714149	6415778	No	Building	20	47	-	-	-	-
395	714035	6415724	No	Dwelling	21	47	35	60	Yes	Yes
396	714130	6415782	No	Building	20	47	-	-	-	-
397	714088	6415787	No	Dwelling	20	47	35	60	Yes	Yes
398	714065	6415776	No	Dwelling	20	47	35	60	Yes	Yes
399	731639	6389577	No	Building	18	44	-	-	-	-
400	731910	6390841	No	Dwelling	18	44	35	60	Yes	Yes
401	712642	6414817	No	Dwelling	18	45	35	60	Yes	Yes
402	713901	6415744	No	Dwelling	21	47	35	60	Yes	Yes
403	726701	6413826	No	Dwelling	18	44	35	60	Yes	Yes
404	731753	6389664	No	Dwelling	18	44	35	60	Yes	Yes
405	731753	6389609	No	Building	18	44	-	-	-	-
406	731733	6390329	No	Dwelling	17	43	35	60	Yes	Yes
407	731745	6390283	No	Building	17	43	-	-	-	-

Receiver ID	Receiver coordinates <sup>1</sup>		Associated property	Building category <sup>2</sup>	Predicted noise level at rated power wind speed (15 m/s)		Noise criteria		Complies with noise criteria	
	Easting, m	Northing, m			L <sub>Aeq,10minute</sub>	L <sub>Ceq,10minute</sub>	L <sub>Aeq,10minute</sub>	L <sub>Ceq,10minute</sub>	L <sub>Aeq,10minute</sub>	L <sub>Ceq,10minute</sub>
408	708560	6408530	No	Dwelling	20	46	35	60	Yes	Yes
409	726263	6381229	No	Dwelling	15	42	35	60	Yes	Yes
410	714268	6416091	No	Dwelling	20	47	35	60	Yes	Yes
411	731516	6387294	No	Dwelling	17	44	35	60	Yes	Yes
412	731902	6389035	No	Dwelling	17	43	35	60	Yes	Yes
413	731530	6410908	No	Dwelling	15	42	35	60	Yes	Yes
414	731917	6389233	No	Building	18	44	-	-	-	-
415	733108	6393482	No	Dwelling	17	43	35	60	Yes	Yes
416	722771	6402524	No	Dwelling	33	53	35	60	Yes	Yes
416A	731914	6388910	No	Building	18	44	-	-	-	-
417	723286	6401329	No	Dwelling	32	52	35	60	Yes	Yes
418	722785	6402696	No	Dwelling	33	53	35	60	Yes	Yes
418A	725924	6414800	No	Building	18	44	-	-	-	-
419	708073	6405736	No	Building	21	47	-	-	-	-
420	727641	6381738	No	Dwelling	14	41	35	60	Yes	Yes
421	726533	6381062	No	Dwelling	15	42	35	60	Yes	Yes
422	708017	6405809	No	Building	21	47	-	-	-	-
423	731987	6388268	No	Building	19	45	-	-	-	-
424	726028	6414898	No	Building	17	44	-	-	-	-
425	732110	6389370	No	Dwelling	18	44	35	60	Yes	Yes
426	726139	6414838	No	Building	16	43	-	-	-	-
427	731942	6387850	No	Dwelling	17	44	35	60	Yes	Yes
428	731818	6387213	No	Building	16	43	-	-	-	-

Receiver ID	Receiver coordinates <sup>1</sup>		Associated property	Building category <sup>2</sup>	Predicted noise level at rated power wind speed (15 m/s)		Noise criteria		Complies with noise criteria	
	Easting, m	Northing, m			L <sub>Aeq,10minute</sub>	L <sub>Ceq,10minute</sub>	L <sub>Aeq,10minute</sub>	L <sub>Ceq,10minute</sub>	L <sub>Aeq,10minute</sub>	L <sub>Ceq,10minute</sub>
429	728535	6412718	No	Dwelling	17	43	35	60	Yes	Yes
430	713626	6416145	No	Dwelling	20	46	35	60	Yes	Yes
431	731874	6387159	No	Dwelling	16	43	35	60	Yes	Yes
432	712347	6388012	No	Dwelling	21	46	35	60	Yes	Yes
433	731510	6411283	No	Building	14	42	-	-	-	-
434	712321	6388002	No	Dwelling	21	46	35	60	Yes	Yes
435	712320	6387931	No	Dwelling	21	46	35	60	Yes	Yes
436	712306	6387971	No	Dwelling	21	46	35	60	Yes	Yes
437	731448	6411369	No	Building	14	42	-	-	-	-
438	712285	6388007	No	Dwelling	21	46	35	60	Yes	Yes
439	718578	6417258	No	Building	20	47	-	-	-	-
440	712261	6388000	No	Dwelling	21	46	35	60	Yes	Yes
441	731540	6411368	No	Building	14	42	-	-	-	-
442	718555	6417307	No	Dwelling	20	47	35	60	Yes	Yes
443	718540	6417322	No	Building	20	47	-	-	-	-
444	731524	6411435	No	Building	14	42	-	-	-	-
445	712186	6387994	No	Dwelling	20	46	35	60	Yes	Yes
446	728735	6412870	No	Dwelling	16	43	35	60	Yes	Yes
447	712186	6387930	No	Dwelling	21	46	35	60	Yes	Yes
448	712170	6387934	No	Dwelling	20	46	35	60	Yes	Yes
449	731630	6411421	No	Building	14	42	-	-	-	-
450	712147	6387992	No	Dwelling	20	46	35	60	Yes	Yes
451	712127	6387998	No	Dwelling	20	46	35	60	Yes	Yes

Receiver ID	Receiver coordinates <sup>1</sup>		Associated property	Building category <sup>2</sup>	Predicted noise level at rated power wind speed (15 m/s)		Noise criteria		Complies with noise criteria	
	Easting, m	Northing, m			L <sub>Aeq,10minute</sub>	L <sub>Ceq,10minute</sub>	L <sub>Aeq,10minute</sub>	L <sub>Ceq,10minute</sub>	L <sub>Aeq,10minute</sub>	L <sub>Ceq,10minute</sub>
452	712116	6388001	No	Dwelling	20	46	35	60	Yes	Yes
453	712117	6387965	No	Dwelling	20	46	35	60	Yes	Yes
454	712104	6388004	No	Dwelling	20	46	35	60	Yes	Yes
455	712096	6388009	No	Dwelling	20	46	35	60	Yes	Yes
456	732268	6387674	No	Dwelling	16	43	35	60	Yes	Yes
457	712087	6388012	No	Dwelling	20	46	35	60	Yes	Yes
458	712078	6388013	No	Dwelling	20	46	35	60	Yes	Yes
459	712067	6388021	No	Dwelling	20	46	35	60	Yes	Yes
460	712055	6388031	No	Dwelling	20	46	35	60	Yes	Yes
461	712044	6388033	No	Dwelling	20	46	35	60	Yes	Yes
462	731753	6411474	No	Dwelling	14	42	35	60	Yes	Yes
463	712035	6388035	No	Dwelling	20	46	35	60	Yes	Yes
464	713386	6416423	No	Dwelling	20	46	35	60	Yes	Yes
465	713413	6416471	No	Dwelling	20	46	35	60	Yes	Yes
466	712009	6387774	No	Dwelling	21	46	35	60	Yes	Yes
467	712012	6387736	No	Dwelling	21	46	35	60	Yes	Yes
468	711978	6387758	No	Dwelling	20	46	35	60	Yes	Yes
469	729152	6412905	No	Dwelling	16	42	35	60	Yes	Yes
470	711959	6387797	No	Dwelling	20	46	35	60	Yes	Yes
471	711971	6387696	No	Dwelling	20	46	35	60	Yes	Yes
472	711923	6387945	No	Dwelling	20	46	35	60	Yes	Yes
473	711897	6388073	No	Dwelling	20	46	35	60	Yes	Yes
474	711955	6387710	No	Dwelling	20	46	35	60	Yes	Yes

Receiver ID	Receiver coordinates <sup>1</sup>		Associated property	Building category <sup>2</sup>	Predicted noise level at rated power wind speed (15 m/s)		Noise criteria		Complies with noise criteria	
	Easting, m	Northing, m			L <sub>Aeq,10minute</sub>	L <sub>Ceq,10minute</sub>	L <sub>Aeq,10minute</sub>	L <sub>Ceq,10minute</sub>	L <sub>Aeq,10minute</sub>	L <sub>Ceq,10minute</sub>
475	711956	6387686	No	Dwelling	20	46	35	60	Yes	Yes
476	711900	6387984	No	Dwelling	20	46	35	60	Yes	Yes
477	711949	6387679	No	Dwelling	20	46	35	60	Yes	Yes
478	711941	6387709	No	Dwelling	20	46	35	60	Yes	Yes
479	711869	6388114	No	Dwelling	20	46	35	60	Yes	Yes
480	731722	6411669	No	Building	14	42	-	-	-	-
481	729378	6412815	No	Dwelling	15	42	35	60	Yes	Yes
482	711927	6387758	No	Dwelling	20	46	35	60	Yes	Yes
483	711911	6387785	No	Dwelling	20	46	35	60	Yes	Yes
484	711928	6387698	No	Dwelling	20	46	35	60	Yes	Yes
485	711931	6387677	No	Dwelling	20	46	35	60	Yes	Yes
486	711892	6387874	No	Dwelling	20	46	35	60	Yes	Yes
487	711851	6388119	No	Dwelling	20	46	35	60	Yes	Yes
488	711849	6388091	No	Dwelling	20	46	35	60	Yes	Yes
489	711898	6387783	No	Dwelling	20	46	35	60	Yes	Yes
490	711837	6388124	No	Dwelling	20	46	35	60	Yes	Yes
491	711838	6388098	No	Dwelling	20	46	35	60	Yes	Yes
492	711885	6387780	No	Dwelling	20	46	35	60	Yes	Yes
493	711871	6387853	No	Dwelling	20	46	35	60	Yes	Yes
494	711825	6388128	No	Dwelling	20	46	35	60	Yes	Yes
495	711824	6388105	No	Dwelling	20	46	35	60	Yes	Yes
496	711866	6387822	No	Dwelling	20	46	35	60	Yes	Yes
497	711877	6387749	No	Dwelling	20	46	35	60	Yes	Yes

Receiver ID	Receiver coordinates <sup>1</sup>		Associated property	Building category <sup>2</sup>	Predicted noise level at rated power wind speed (15 m/s)		Noise criteria		Complies with noise criteria	
	Easting, m	Northing, m			L <sub>Aeq,10minute</sub>	L <sub>Ceq,10minute</sub>	L <sub>Aeq,10minute</sub>	L <sub>Ceq,10minute</sub>	L <sub>Aeq,10minute</sub>	L <sub>Ceq,10minute</sub>
498	711810	6388134	No	Dwelling	20	46	35	60	Yes	Yes
499	711887	6387679	No	Dwelling	20	46	35	60	Yes	Yes
500	711852	6387840	No	Dwelling	20	46	35	60	Yes	Yes
501	711873	6387711	No	Dwelling	20	46	35	60	Yes	Yes
502	732449	6411291	No	Building	14	42	-	-	-	-
503	711850	6387764	No	Dwelling	20	46	35	60	Yes	Yes
506	711849	6387736	No	Dwelling	20	46	35	60	Yes	Yes
507	711824	6387852	No	Dwelling	20	46	35	60	Yes	Yes
508	711776	6388145	No	Dwelling	20	46	35	60	Yes	Yes
509	711838	6387760	No	Dwelling	20	46	35	60	Yes	Yes
510	711831	6387796	No	Dwelling	20	46	35	60	Yes	Yes
511	711830	6387859	No	Dwelling	20	46	35	60	Yes	Yes
511A	732429	6411335	No	Building	14	42	-	-	-	-
512	711834	6387735	No	Dwelling	20	46	35	60	Yes	Yes
513	711794	6387927	No	Dwelling	20	46	35	60	Yes	Yes
514	711828	6387728	No	Dwelling	20	46	35	60	Yes	Yes
515	711761	6388110	No	Dwelling	20	46	35	60	Yes	Yes
516	711836	6387683	No	Building	20	46	-	-	-	-
517	711809	6387814	No	Dwelling	20	46	35	60	Yes	Yes
518	711749	6388160	No	Dwelling	20	46	35	60	Yes	Yes
519	711788	6387906	No	Dwelling	20	46	35	60	Yes	Yes
520	711815	6387718	No	Dwelling	20	46	35	60	Yes	Yes
521	711740	6388160	No	Dwelling	20	46	35	60	Yes	Yes

Receiver ID	Receiver coordinates <sup>1</sup>		Associated property	Building category <sup>2</sup>	Predicted noise level at rated power wind speed (15 m/s)		Noise criteria		Complies with noise criteria	
	Easting, m	Northing, m			L <sub>Aeq,10minute</sub>	L <sub>Ceq,10minute</sub>	L <sub>Aeq,10minute</sub>	L <sub>Ceq,10minute</sub>	L <sub>Aeq,10minute</sub>	L <sub>Ceq,10minute</sub>
522	711806	6387715	No	Dwelling	20	46	35	60	Yes	Yes
523	711729	6388161	No	Dwelling	20	46	35	60	Yes	Yes
524	711799	6387742	No	Dwelling	20	46	35	60	Yes	Yes
526	711752	6387957	No	Dwelling	20	46	35	60	Yes	Yes
527	711715	6388171	No	Dwelling	20	46	35	60	Yes	Yes
528	711760	6387875	No	Dwelling	20	46	35	60	Yes	Yes
529	711705	6388173	No	Dwelling	20	46	35	60	Yes	Yes
530	711697	6388183	No	Dwelling	20	45	35	60	Yes	Yes
531	711762	6387767	No	Dwelling	20	46	35	60	Yes	Yes
532	713282	6416726	No	Dwelling	19	46	35	60	Yes	Yes
533	711777	6387679	No	Dwelling	20	46	35	60	Yes	Yes
534	711750	6387809	No	Dwelling	20	46	35	60	Yes	Yes
535	711780	6387644	No	Dwelling	19	45	35	60	Yes	Yes
536	711686	6388195	No	Dwelling	20	45	35	60	Yes	Yes
537	711720	6387969	No	Dwelling	20	46	35	60	Yes	Yes
538	711764	6387697	No	Dwelling	20	46	35	60	Yes	Yes
539	711773	6387652	No	Dwelling	19	45	35	60	Yes	Yes
540	713264	6416731	No	Dwelling	19	46	35	60	Yes	Yes
541	711681	6388158	No	Dwelling	20	46	35	60	Yes	Yes
542	711762	6387682	No	Dwelling	20	46	35	60	Yes	Yes
543	711737	6387806	No	Dwelling	20	46	35	60	Yes	Yes
544	711568	6388745	No	Dwelling	19	45	35	60	Yes	Yes
545	711761	6387654	No	Dwelling	20	46	35	60	Yes	Yes

Receiver ID	Receiver coordinates <sup>1</sup>		Associated property	Building category <sup>2</sup>	Predicted noise level at rated power wind speed (15 m/s)		Noise criteria		Complies with noise criteria	
	Easting, m	Northing, m			L <sub>Aeq,10minute</sub>	L <sub>Ceq,10minute</sub>	L <sub>Aeq,10minute</sub>	L <sub>Ceq,10minute</sub>	L <sub>Aeq,10minute</sub>	L <sub>Ceq,10minute</sub>
546	711755	6387633	No	Dwelling	19	45	35	60	Yes	Yes
547	711750	6387626	No	Dwelling	19	45	35	60	Yes	Yes
548	711648	6388225	No	Dwelling	19	45	35	60	Yes	Yes
549	711645	6388238	No	Dwelling	20	45	35	60	Yes	Yes
550	711751	6387608	No	Dwelling	19	45	35	60	Yes	Yes
551	711809	6387667	No	Dwelling	19	45	35	60	Yes	Yes
552	711640	6388246	No	Dwelling	20	45	35	60	Yes	Yes
553	713394	6416847	No	Dwelling	19	46	35	60	Yes	Yes
554	729589	6412929	No	Dwelling	15	42	35	60	Yes	Yes
555	711629	6388262	No	Dwelling	19	45	35	60	Yes	Yes
556	731943	6411792	No	Dwelling	14	41	35	60	Yes	Yes
557	711617	6388293	No	Dwelling	19	45	35	60	Yes	Yes
558	711618	6388280	No	Dwelling	19	45	35	60	Yes	Yes
559	711581	6388607	No	Dwelling	19	45	35	60	Yes	Yes
560	713220	6416777	No	Dwelling	19	46	35	60	Yes	Yes
561	711569	6388580	No	Dwelling	19	45	35	60	Yes	Yes
562	711564	6388574	No	Dwelling	19	45	35	60	Yes	Yes
563	711555	6388642	No	Dwelling	19	45	35	60	Yes	Yes
564	711580	6388368	No	Dwelling	19	45	35	60	Yes	Yes
565	711632	6387982	No	Dwelling	20	46	35	60	Yes	Yes
566	711556	6388563	No	Dwelling	19	45	35	60	Yes	Yes
567	711574	6388374	No	Dwelling	19	45	35	60	Yes	Yes
568	711560	6388446	No	Dwelling	19	45	35	60	Yes	Yes

Receiver ID	Receiver coordinates <sup>1</sup>		Associated property	Building category <sup>2</sup>	Predicted noise level at rated power wind speed (15 m/s)		Noise criteria		Complies with noise criteria	
	Easting, m	Northing, m			L <sub>Aeq,10minute</sub>	L <sub>Ceq,10minute</sub>	L <sub>Aeq,10minute</sub>	L <sub>Ceq,10minute</sub>	L <sub>Aeq,10minute</sub>	L <sub>Ceq,10minute</sub>
569	711634	6387908	No	Building	20	46	-	-	-	-
570	721469	6417301	No	Dwelling	20	47	35	60	Yes	Yes
571	711542	6388466	No	Dwelling	19	45	35	60	Yes	Yes
572	713313	6416878	No	Building	19	46	-	-	-	-
573	711525	6388587	No	Dwelling	19	45	35	60	Yes	Yes
574	711527	6388520	No	Dwelling	19	45	35	60	Yes	Yes
576	721435	6417342	No	Building	20	47	-	-	-	-
577	721393	6417354	No	Building	20	47	-	-	-	-
578	711537	6388111	No	Dwelling	20	46	35	60	Yes	Yes
579	711523	6388061	No	Building	20	46	-	-	-	-
580	711460	6388494	No	Dwelling	19	45	35	60	Yes	Yes
581	731827	6412091	No	Dwelling	14	41	35	60	Yes	Yes
582	713294	6417040	No	Dwelling	19	46	35	60	Yes	Yes
583	720245	6417995	No	Dwelling	20	46	35	60	Yes	Yes
584	720243	6418035	No	Building	20	46	-	-	-	-
585	720173	6418144	No	Building	20	46	-	-	-	-
586	720145	6418168	No	Building	19	46	-	-	-	-
587	720559	6418061	No	Dwelling	20	46	35	60	Yes	Yes
588	720188	6418199	No	Building	19	46	-	-	-	-
589	713164	6417460	No	Building	18	46	-	-	-	-
590	713177	6417478	No	Building	18	46	-	-	-	-
591	713176	6417499	No	Building	18	46	-	-	-	-
592	713129	6417526	No	Dwelling	18	46	35	60	Yes	Yes

Receiver ID	Receiver coordinates <sup>1</sup>		Associated property	Building category <sup>2</sup>	Predicted noise level at rated power wind speed (15 m/s)		Noise criteria		Complies with noise criteria	
	Easting, m	Northing, m			L <sub>Aeq,10minute</sub>	L <sub>Ceq,10minute</sub>	L <sub>Aeq,10minute</sub>	L <sub>Ceq,10minute</sub>	L <sub>Aeq,10minute</sub>	L <sub>Ceq,10minute</sub>
593	713118	6417557	No	Dwelling	18	46	35	60	Yes	Yes
594	709094	6414548	No	Building	17	44	-	-	-	-
595	709104	6414737	No	Dwelling	17	44	35	60	Yes	Yes
596	713052	6417828	No	Dwelling	18	45	35	60	Yes	Yes
597	709011	6414769	No	Building	17	44	-	-	-	-
598	713055	6417938	No	Building	18	45	-	-	-	-
599	714588	6418635	No	Dwelling	16	44	35	60	Yes	Yes
600	713514	6418337	No	Dwelling	16	43	35	60	Yes	Yes
601	713537	6418306	No	Dwelling	16	43	35	60	Yes	Yes
602	713522	6418363	No	Dwelling	16	43	35	60	Yes	Yes
603	722438	6418533	No	Dwelling	18	45	35	60	Yes	Yes
604	721182	6418791	No	Building	19	46	-	-	-	-
605	721348	6418768	No	Dwelling	19	46	35	60	Yes	Yes
606	721160	6418857	No	Building	19	46	-	-	-	-
607	721274	6418840	No	Building	19	46	-	-	-	-
608	722414	6418712	No	Building	18	45	-	-	-	-
609	721311	6418846	No	Building	19	46	-	-	-	-
610	714437	6419455	No	Dwelling	15	43	35	60	Yes	Yes
611	712614	6418732	No	Dwelling	18	45	35	60	Yes	Yes
612	714453	6419592	No	Building	15	43	-	-	-	-
613	714497	6419609	No	Building	15	43	-	-	-	-
614	712656	6418967	No	Dwelling	17	45	35	60	Yes	Yes
615	705963	6412339	No	Dwelling	16	44	35	60	Yes	Yes

Receiver ID	Receiver coordinates <sup>1</sup>		Associated property	Building category <sup>2</sup>	Predicted noise level at rated power wind speed (15 m/s)		Noise criteria		Complies with noise criteria	
	Easting, m	Northing, m			L <sub>Aeq,10minute</sub>	L <sub>Ceq,10minute</sub>	L <sub>Aeq,10minute</sub>	L <sub>Ceq,10minute</sub>	L <sub>Aeq,10minute</sub>	L <sub>Ceq,10minute</sub>
616	705555	6412160	No	Building	16	44	-	-	-	-
617	705395	6412068	No	Dwelling	16	44	35	60	Yes	Yes
618	711376	6419071	No	Dwelling	17	45	35	60	Yes	Yes
619	716357	6420862	No	Dwelling	17	45	35	60	Yes	Yes
620	712318	6419711	No	Building	17	45	-	-	-	-
621	712286	6419701	No	Dwelling	17	45	35	60	Yes	Yes
622	716379	6420927	No	Building	17	45	-	-	-	-
623	716325	6420953	No	Building	17	45	-	-	-	-
624	712515	6419985	No	Building	17	45	-	-	-	-
625	710659	6418937	No	Dwelling	17	45	35	60	Yes	Yes
626	710538	6418913	No	Building	17	45	-	-	-	-
627	712841	6420247	No	Building	16	45	-	-	-	-
628	710277	6418745	No	Building	17	45	-	-	-	-
629	710544	6418972	No	Building	17	45	-	-	-	-
630	703725	6409555	No	Building	17	45	-	-	-	-
631	718566	6421745	No	Dwelling	16	44	35	60	Yes	Yes
632	703666	6409405	No	Building	17	45	-	-	-	-
633	718366	6421807	No	Building	16	44	-	-	-	-
634	703612	6409601	No	Building	17	45	-	-	-	-
635	703636	6409748	No	Dwelling	16	45	35	60	Yes	Yes
636	718316	6421883	No	Building	16	44	-	-	-	-
637	718419	6421881	No	Dwelling	16	45	35	60	Yes	Yes
638	703547	6409451	No	Dwelling	17	45	35	60	Yes	Yes

Receiver ID	Receiver coordinates <sup>1</sup>		Associated property	Building category <sup>2</sup>	Predicted noise level at rated power wind speed (15 m/s)		Noise criteria		Complies with noise criteria	
	Easting, m	Northing, m			L <sub>Aeq,10minute</sub>	L <sub>Ceq,10minute</sub>	L <sub>Aeq,10minute</sub>	L <sub>Ceq,10minute</sub>	L <sub>Aeq,10minute</sub>	L <sub>Ceq,10minute</sub>
639	703354	6409948	No	Dwelling	16	45	35	60	Yes	Yes
640	718123	6422414	No	Dwelling	14	42	35	60	Yes	Yes
641	718170	6422432	No	Dwelling	14	42	35	60	Yes	Yes
642	718207	6422438	No	Dwelling	14	43	35	60	Yes	Yes
643	718317	6422507	No	Building	16	44	-	-	-	-
644	718218	6422513	No	Dwelling	15	44	35	60	Yes	Yes
645	718259	6422516	No	Dwelling	16	44	35	60	Yes	Yes
646	718305	6422539	No	Building	16	44	-	-	-	-
647	702378	6406932	No	Building	17	45	-	-	-	-
648	710811	6421153	No	Dwelling	15	44	35	60	Yes	Yes
649	710769	6421136	No	Building	15	44	-	-	-	-
650	710707	6421208	No	Building	15	44	-	-	-	-
651	713107	6422605	No	Dwelling	15	43	35	60	Yes	Yes
652	711841	6422233	No	Dwelling	13	42	35	60	Yes	Yes
653	713146	6422746	No	Building	14	43	-	-	-	-
654	712913	6422769	No	Dwelling	13	42	35	60	Yes	Yes
655	713180	6422871	No	Building	13	42	-	-	-	-
656	710097	6421460	No	Dwelling	15	44	35	60	Yes	Yes
657	701369	6406556	No	Building	16	45	-	-	-	-
658	701349	6406612	No	Dwelling	16	45	35	60	Yes	Yes
659	701334	6406564	No	Building	16	45	-	-	-	-
660	720634	6423466	No	Dwelling	15	44	35	60	Yes	Yes
661	720706	6423484	No	Dwelling	15	44	35	60	Yes	Yes

Receiver ID	Receiver coordinates <sup>1</sup>		Associated property	Building category <sup>2</sup>	Predicted noise level at rated power wind speed (15 m/s)		Noise criteria		Complies with noise criteria	
	Easting, m	Northing, m			L <sub>Aeq,10minute</sub>	L <sub>Ceq,10minute</sub>	L <sub>Aeq,10minute</sub>	L <sub>Ceq,10minute</sub>	L <sub>Aeq,10minute</sub>	L <sub>Ceq,10minute</sub>
662	710870	6422233	No	Building	15	44	-	-	-	-
663	710807	6422270	No	Dwelling	15	44	35	60	Yes	Yes
664	710755	6422346	No	Building	15	43	-	-	-	-
665	710850	6422400	No	Building	15	43	-	-	-	-
666	712172	6423284	No	Dwelling	12	41	35	60	Yes	Yes
667	709532	6422218	No	Dwelling	14	43	35	60	Yes	Yes
668	711990	6423455	No	Building	12	41	-	-	-	-
669	709561	6422271	No	Dwelling	14	43	35	60	Yes	Yes
670	709664	6422368	No	Dwelling	14	43	35	60	Yes	Yes
671	710038	6422633	No	Dwelling	14	43	35	60	Yes	Yes
672	709479	6422314	No	Dwelling	14	43	35	60	Yes	Yes
673	713004	6423950	No	Dwelling	12	41	35	60	Yes	Yes
674	711929	6423831	No	Building	13	42	-	-	-	-
675	700036	6404522	No	Building	14	42	-	-	-	-
676	699995	6404565	No	Building	14	42	-	-	-	-
677	699985	6404607	No	Building	14	42	-	-	-	-
678	699896	6404598	No	Dwelling	14	42	35	60	Yes	Yes
679	699748	6404647	No	Building	13	42	-	-	-	-
680	699562	6402911	No	Building	13	42	-	-	-	-
681	699110	6403771	No	Building	13	42	-	-	-	-
682	699062	6403797	No	Dwelling	13	42	35	60	Yes	Yes
683	699196	6402482	No	Building	13	42	-	-	-	-
684	698778	6403951	No	Building	13	42	-	-	-	-

Receiver ID	Receiver coordinates <sup>1</sup>		Associated property	Building category <sup>2</sup>	Predicted noise level at rated power wind speed (15 m/s)		Noise criteria		Complies with noise criteria	
	Easting, m	Northing, m			L <sub>Aeq,10minute</sub>	L <sub>Ceq,10minute</sub>	L <sub>Aeq,10minute</sub>	L <sub>Ceq,10minute</sub>	L <sub>Aeq,10minute</sub>	L <sub>Ceq,10minute</sub>
685	698790	6403479	No	Building	13	42	-	-	-	-
686	698628	6403968	No	Dwelling	13	42	35	60	Yes	Yes
687	722117	6426388	No	Dwelling	11	41	35	60	Yes	Yes
688	712460	6426235	No	Dwelling	10	40	35	60	Yes	Yes
689	712350	6426226	No	Dwelling	10	40	35	60	Yes	Yes
690	721976	6426636	No	Dwelling	11	40	35	60	Yes	Yes
691	721915	6426751	No	Dwelling	11	40	35	60	Yes	Yes
692	712308	6426680	No	Dwelling	10	40	35	60	Yes	Yes
693	712395	6427357	No	Dwelling	9	39	35	60	Yes	Yes
694	712028	6427478	No	Dwelling	9	39	35	60	Yes	Yes
695	711175	6428206	No	Dwelling	8	39	35	60	Yes	Yes
696	711126	6428354	No	Dwelling	8	39	35	60	Yes	Yes
697	708963	6430002	No	Dwelling	7	38	35	60	Yes	Yes
698	708939	6430530	No	Dwelling	7	37	35	60	Yes	Yes
699	710886	6431776	No	Dwelling	7	38	35	60	Yes	Yes
700	707349	6431293	No	Dwelling	6	37	35	60	Yes	Yes
701	707374	6431428	No	Dwelling	6	37	35	60	Yes	Yes
702	707282	6431398	No	Dwelling	6	37	35	60	Yes	Yes
703	709072	6432771	No	Dwelling	5	36	35	60	Yes	Yes
729	711528	6388504	No	Dwelling	19	45	35	60	Yes	Yes
738	711850	6387764	No	Dwelling	20	46	35	60	Yes	Yes
739	728208	6400196	No	Dwelling	24	48	35	60	Yes	Yes
800	729650	6406559	No	Dwelling	19	44	35	60	Yes	Yes

Receiver ID	Receiver coordinates <sup>1</sup>		Associated property	Building category <sup>2</sup>	Predicted noise level at rated power wind speed (15 m/s)		Noise criteria		Complies with noise criteria	
	Easting, m	Northing, m			L <sub>Aeq,10minute</sub>	L <sub>Ceq,10minute</sub>	L <sub>Aeq,10minute</sub>	L <sub>Ceq,10minute</sub>	L <sub>Aeq,10minute</sub>	L <sub>Ceq,10minute</sub>
801	732270	6404747	No	Dwelling	16	43	35	60	Yes	Yes
802	733024	6405461	No	Dwelling	16	43	35	60	Yes	Yes
803	732984	6405620	No	Dwelling	16	43	35	60	Yes	Yes
804	731911	6405282	No	Dwelling	17	43	35	60	Yes	Yes
805	732151	6404853	No	Dwelling	16	43	35	60	Yes	Yes
806	732018	6404853	No	Dwelling	17	43	35	60	Yes	Yes
807	731913	6404588	No	Dwelling	17	43	35	60	Yes	Yes
809	731820	6403953	No	Dwelling	17	43	35	60	Yes	Yes
810	733011	6403596	No	Dwelling	16	43	35	60	Yes	Yes
811	733447	6402035	No	Dwelling	16	43	35	60	Yes	Yes
812	732918	6400441	No	Dwelling	17	43	35	60	Yes	Yes

**Notes:**

- Receiver coordinates – MGA 94 Zone 55
- Receivers categorised as “Building” have been identified by Vestas as non-assessment locations