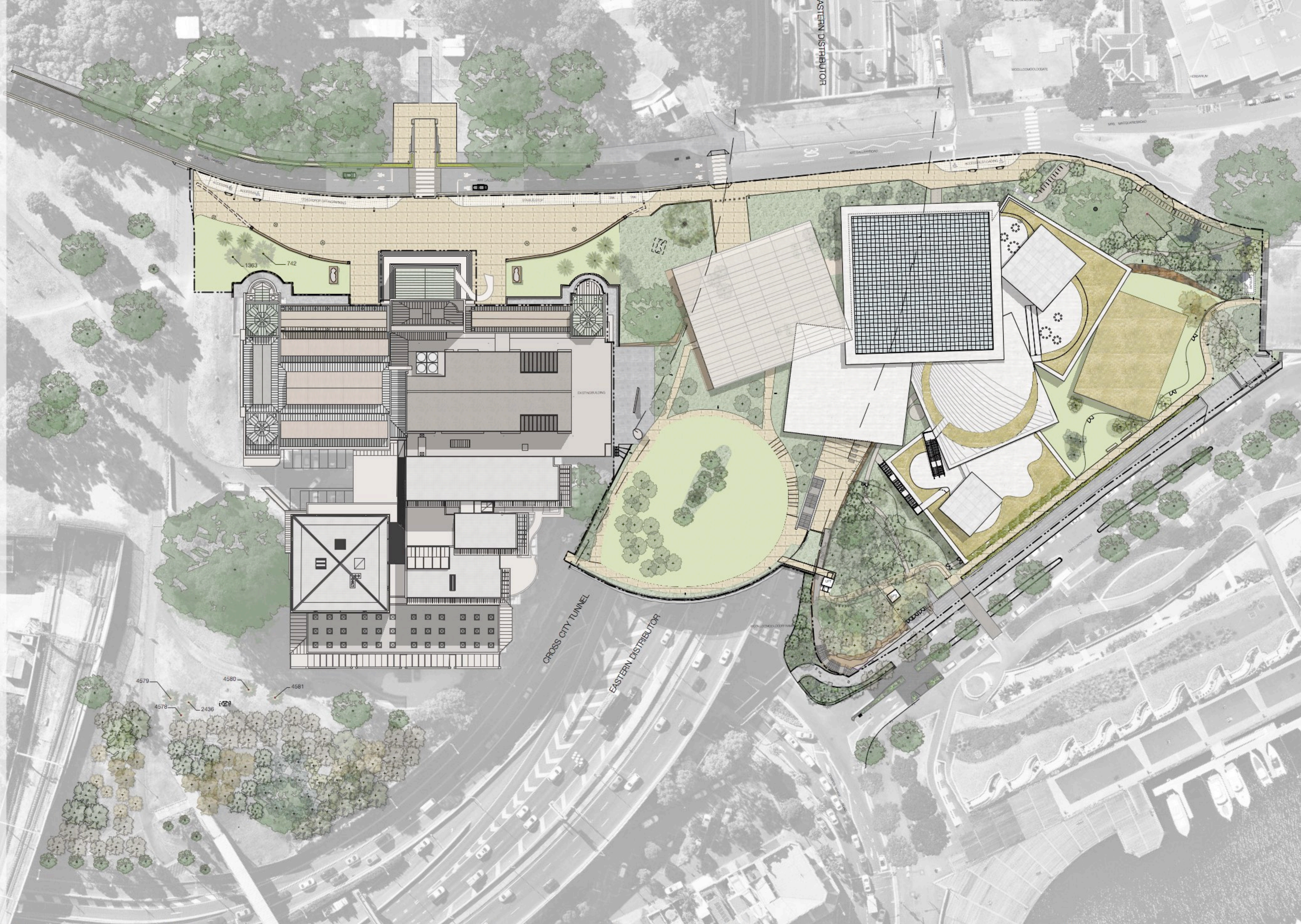


- Legend**
- Site boundary
 - Contours existing
 - Contours proposed
- Materials**
- Lawn
 - Native climber mix
 - Sydney sandstone woodland groundcover
 - Wildflower roof planting
 - Mounded planting
 - Stone paving
 - Small stone set - veh.
 - Colour concrete - refer Architect
 - Bluestone paver
 - Crushed sandstone
 - Make good to asphalt concrete
 - Existing sculpture to be removed
 - Pole Top Luminaire - refer lighting
 - Recycled sandstone seats
 - Sandstone seating bench
 - Outdoor furniture
 - Sandstone modified to suit
 - Sandstone rock wall
 - Proposed retaining wall
 - Proposed retaining wall - architect
 - Rammed earth wall - architect
 - Existing heritage wall to be reused
 - Fence type 1
 - Fence type 2
 - Gates
 - Bike racks
 - Transplanted tree - original location
 - Transplanted tree - new location
 - Existing palm tree
 - Existing Eucalyptus
 - Existing fig tree
 - Existing Angophora
 - Proposed Phoenix canariensis 1000L
 - Proposed Eucalyptus sp. 1000L
 - Proposed Angophora sp. 1000L
 - Proposed Banksia sp. 1000L
 - Proposed Acacia sp. 600L
 - Proposed Melaleuca sp. 1000L
 - Proposed Callistemon viminalis 1000L



NOTE:
For HVM protection refer to Security Report

MCGREGOR COXALL
McGregor Coxall Pty Ltd. ACN 082 334 290
Sydney: +61 2 9977 3853
Melbourne: +61 3 9999 1608
sydney@mcgregorcoxall.com
melbourne@mcgregorcoxall.com
Web: www.mcgregorcoxall.com

Client
Art Gallery NSW

Key Consultants
SANAA
Architectus

Project Name
AGNSW Expansion: Sydney Modern Project

Project No.
458SL

Address
Art Gallery Rd, Sydney, NSW, 2000

Key Plan

Scale
1: 500 @ A1

Scale Bar
0 5 10 15 20 25 M

All dimensions are in millimetres unless otherwise noted. Do not scale from this drawing.

Orientation

Issue Log

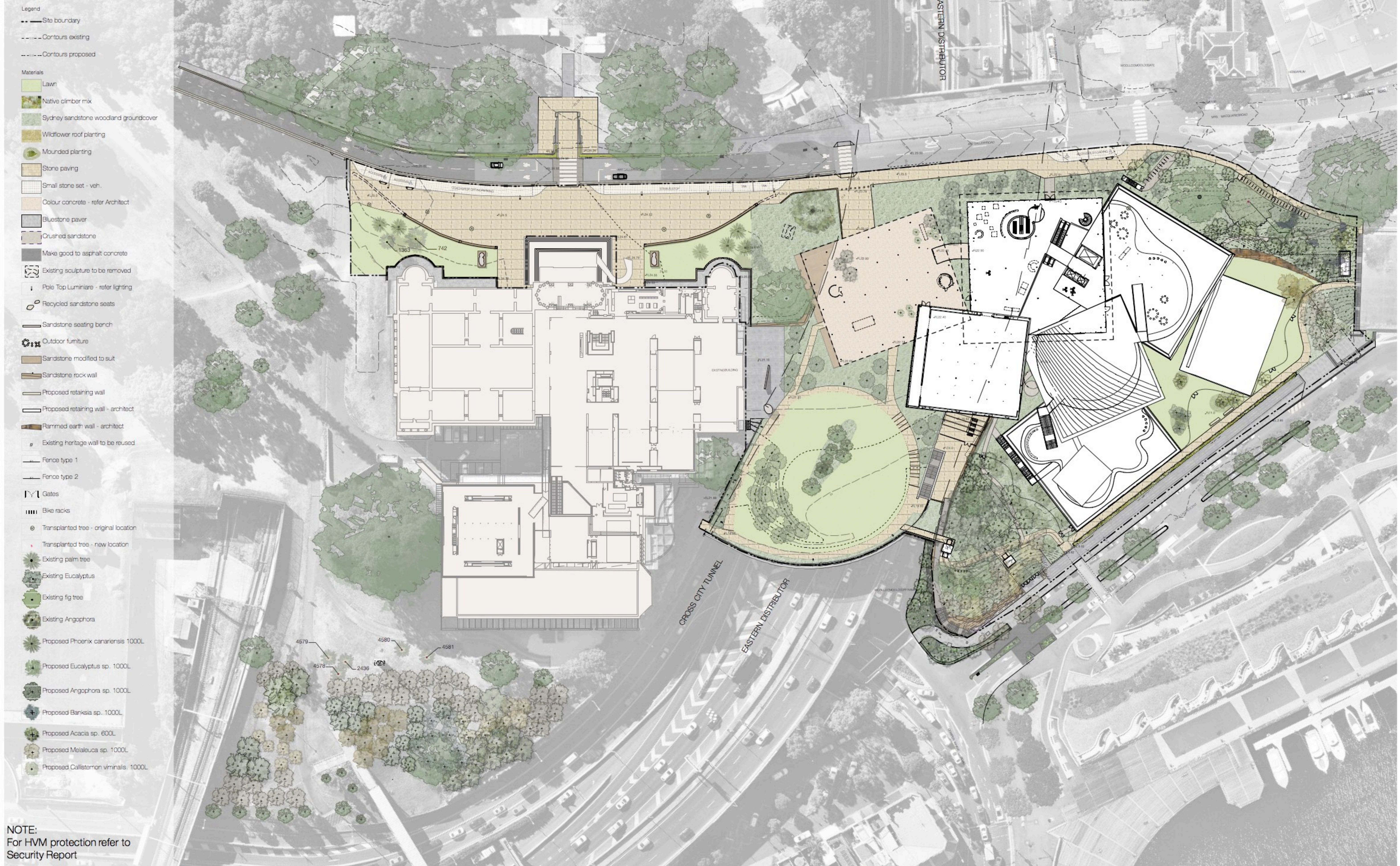
Rev	Revision Description	By	Checked	Date
R	FINAL SSDA	AD	AM	5/4/18
S	REVISED SSDA	PM	ADAM	01/06/18
T	REVISED SSDA	PM	ADAM	7/8/18

Phase
Development Application

Sheet Title
Landscape Masterplan - Roof

Sheet No.
LD_DA_00-01

Rev
T



NOTE:
For HVM protection refer to
Security Report

MCGREGOR COXALL
McGregor Coxall Pty Ltd. ACN 082 334 290
Sydney: +61 2 9977 3853
Melbourne: +61 3 9999 1608
sydney@mcgregorcoxall.com
melbourne@mcgregorcoxall.com
Web: www.mcgregorcoxall.com

Client
Art Gallery NSW

Key Consultants
SANAA
Architectus

Project Name
AGNSW Expansion: Sydney Modern Project

Project No.
458SL

Address
Art Gallery Rd, Sydney, NSW, 2000

Key Plan

Scale
1: 500 @ A1

Scale Bar
0 5 10 15 20 25 M

All dimensions are in millimetres unless otherwise noted. Do not scale from this drawing.

Orientation

Issue Log

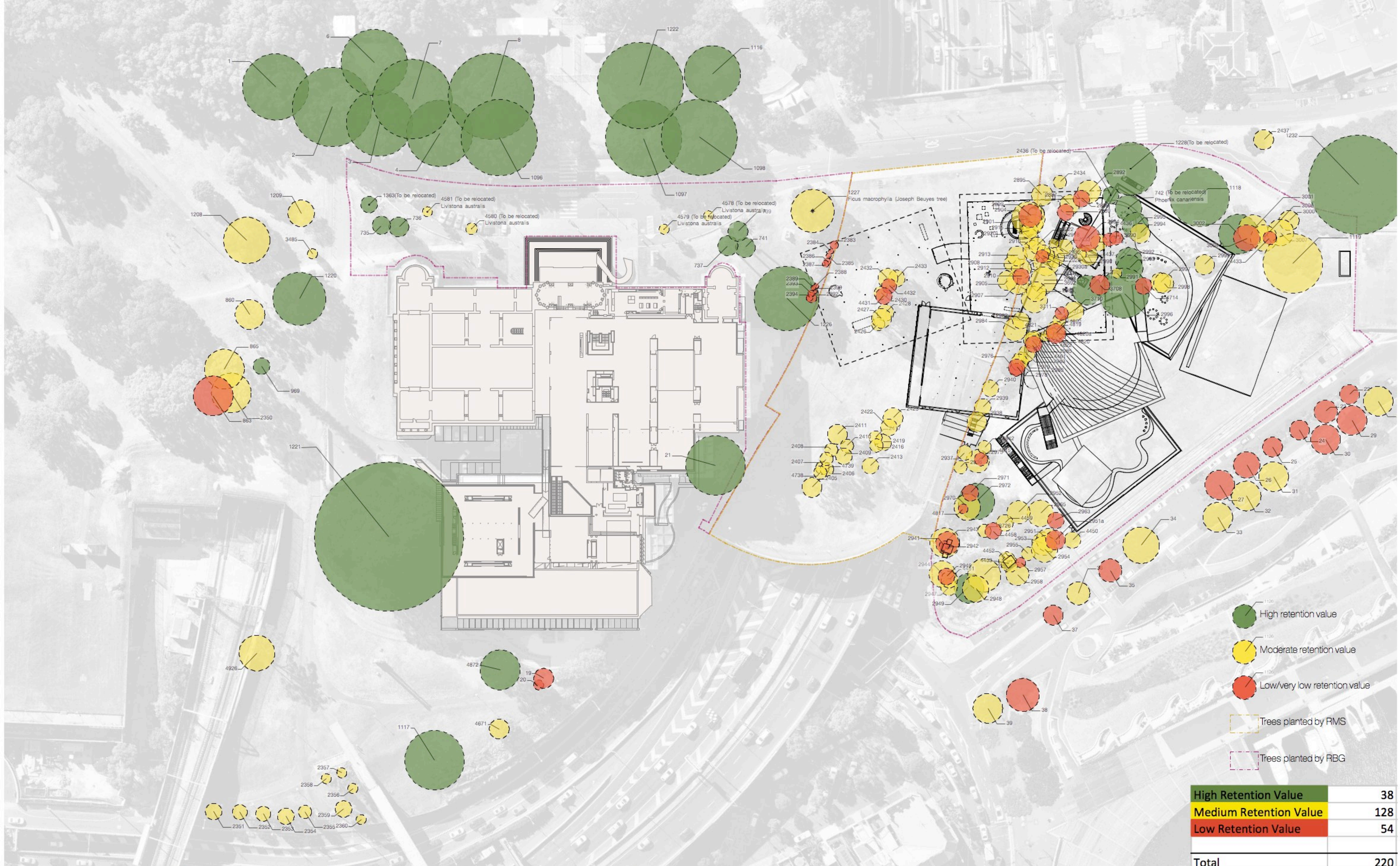
R	FINAL SSSDA	AD	AM	5/4/18
S	REVISED SSSDA	PM	ADAM	01/06/18
T	REVISED SSSDA	PM	ADAM	7/8/18

Phase
Development Application

Sheet Title
Landscape Masterplan - GFLevel

Sheet No.
LD_DA_00-02

Rev	Revision Description	By	Checked	Date



- High retention value
- Moderate retention value
- Low/very low retention value
- Trees planted by RMS
- Trees planted by RBG

High Retention Value	38
Medium Retention Value	128
Low Retention Value	54
Total	220

MCGREGOR COXALL
 McGregor Coxall Pty Ltd. ACN 082 334 290
 Sydney: +61 2 9977 3853
 Melbourne: +61 3 9999 1608
 sydney@mcgregorcoxall.com
 melbourne@mcgregorcoxall.com
 Web: www.mcgregorcoxall.com

Client
 Art Gallery NSW

Key Consultants
 SANAA
 Architectus

Project Name
AGNSW Expansion: Sydney Modern Project

Project No.
 458SL

Address
 Art Gallery Rd, Sydney, NSW, 2000

Key Plan

Scale
 1: 500 @ A1

Scale Bar
 0 5 10 15 20 25 M

All dimensions are in millimetres unless otherwise noted. Do not scale from this drawing.

Orientation

Issue Log

R	Response to SSDA	AD	AM	6/4/18
S	REVISED SSDA	PM/ADAM		01/06/18
T	REVISED SSDA	PM/ADAM		7/8/18

Rev **Revision Description** **By** **Checked** **Date**

Phase
 Development Application

Sheet Title
 Tree Significance

Sheet No.
 LD_DA_00-15

Rev
T



Tree No	RMS/RBG	Botanical Name	Significance	Action
2992	RBG land	Eucalyptus tereticornis	High	Remove
2993	RBG land	Eucalyptus tereticornis	High	Remove
2995	RBG land	Eucalyptus tereticornis	High	Remove
2996	RBG land	Ficus rubiginosa	High	Remove
2989	RBG land	Eucalyptus tereticornis	High	Remove
3002	RBG land	Eucalyptus tereticornis	High	Remove
1	RBG land	Ficus microcarpa var.hillii	High	Retain
2	RBG land	Ficus microcarpa var.hillii	High	Retain
3	RBG land	Ficus microcarpa var.hillii	High	Retain
4	RBG land	Ficus microcarpa var.hillii	High	Retain
6	RBG land	Ficus rubiginosa	High	Retain
7	RBG land	Ficus macrophylla	High	Retain
8	RBG land	Ficus macrophylla	High	Retain
21	RBG land	Ficus macrophylla	High	Retain
735	RBG land	Phoenix canariensis	High	Retain
736	RBG land	Phoenix canariensis	High	Retain
737	RBG land	Phoenix canariensis	High	Retain
739	RBG land	Phoenix canariensis	High	Retain
741	RBG land	Phoenix canariensis	High	Retain
969	RBG land	Araucaria columnaris	High	Retain
1096	RBG land	Ficus microcarpa var.hillii	High	Retain
1097	RBG land	Ficus microcarpa var.hillii	High	Retain
1098	RBG land	Ficus microcarpa var.hillii	High	Retain
1116	RBG land	Ficus rubiginosa	High	Retain
1117	RBG land	Ficus rubiginosa	High	Retain
1118	RBG land	Ficus rubiginosa	High	Retain
1220	RBG land	Ficus macrophylla	High	Retain
1221	RBG land	Ficus macrophylla	High	Retain
1222	RBG land	Ficus macrophylla	High	Retain
1226	RBG land	Ficus rubiginosa	High	Retain
1232	RBG land	Ficus macrophylla	High	Retain
2949	RBG land	Eucalyptus tereticornis	High	Retain
2972	RBG land	Eucalyptus tereticornis	High	Retain
4872	RBG land	Eucalyptus microcorys	High	Retain
742	RBG land	Phoenix canariensis	High	Transplant
1228	RBG land	Ficus macrophylla	High	Transplant
1363	RBG land	Phoenix sylvestris	High	Transplant
2436	RBG land	Chamaerops humilis	High	Transplant

	Remove	
High	Retain	28
Significant	Transplant	4
sub total		38

- Trees planted by RMS
- Trees planted by RBG
- Tree / palm to be retained
- Tree / palm to be removed
- Tree / Palm to be relocated
- Tree / Palm - new location

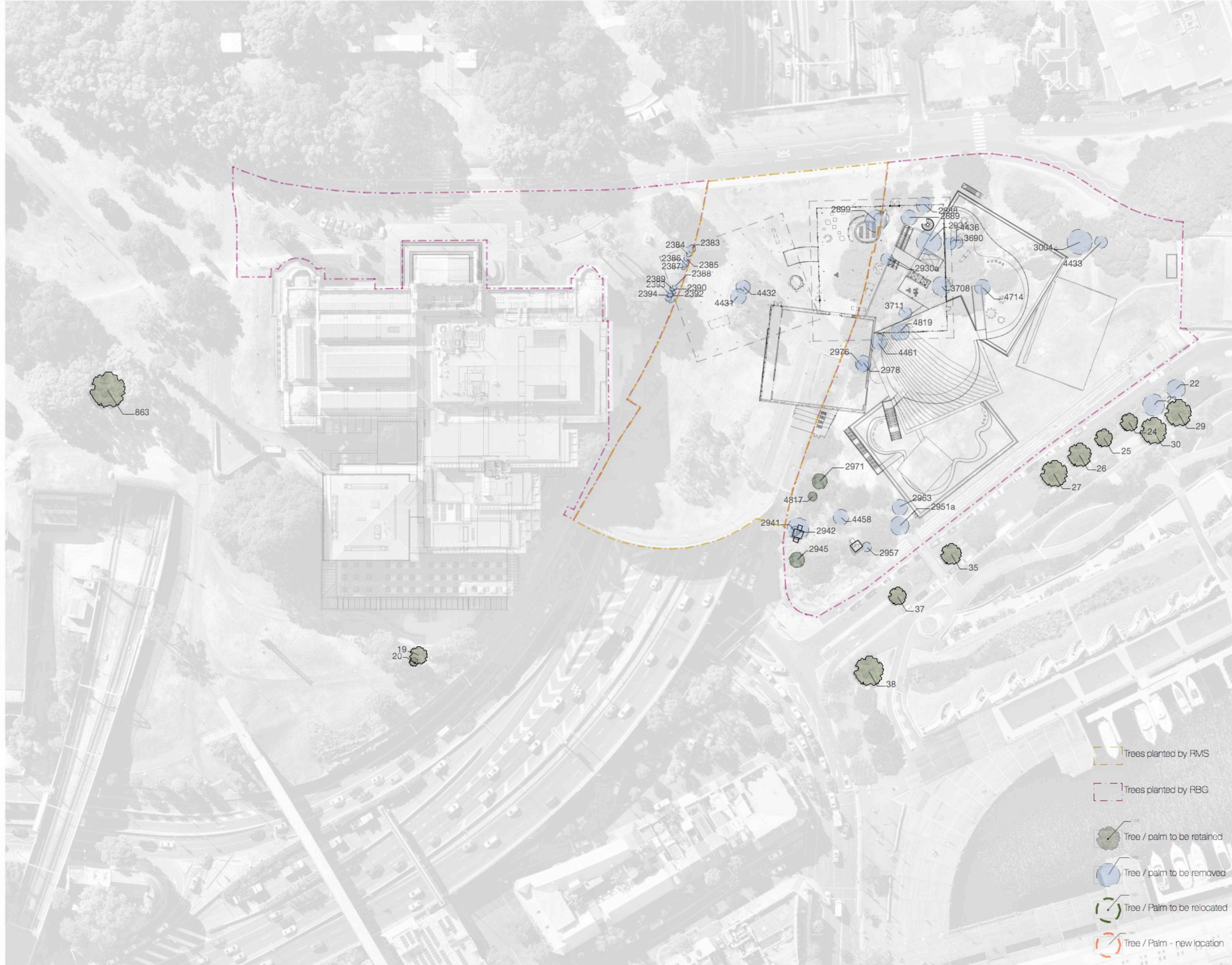


Tree No	RMS/RBG	Botanical Name	Significance	Action
28	Other (outside site)	Ficus rubiginosa var. glabrescens	medium	Retain
31	Other (outside site)	Ficus rubiginosa var. glabrescens	medium	Retain
32	Other (outside site)	Ficus rubiginosa var. glabrescens	medium	Retain
33	Other (outside site)	Ficus rubiginosa var. glabrescens	medium	Retain
34	Other (outside site)	Ficus rubiginosa	medium	Retain
36	Other (outside site)	Ficus rubiginosa	medium	Retain
39	Other (outside site)	Ficus rubiginosa	medium	Retain
1119	RBG land	Ficus rubiginosa	medium	Remove
2434	RBG land	Banksia integrifolia	medium	Remove
2887	RBG land	Angophora costata	medium	Remove
2892	RBG land	Angophora costata	medium	Remove
2918	RBG land	Eucalyptus tereticornis	medium	Remove
2922	RBG land	Eucalyptus tereticornis	medium	Remove
2928	RBG land	Eucalyptus botryoides	medium	Remove
2930	RBG land	Eucalyptus saligna x botryoides	medium	Remove
2931	RBG land	Eucalyptus botryoides	medium	Remove
2932	RBG land	Eucalyptus botryoides	medium	Remove
2933	RBG land	Eucalyptus botryoides	medium	Remove
2936	RBG land	Flindersia australis	medium	Remove
2937	RBG land	Flindersia australis	medium	Remove
2938	RBG land	Flindersia australis	medium	Remove
2939	RBG land	Flindersia australis	medium	Remove
2940	RBG land	Flindersia australis	medium	Remove
2943	RBG land	Angophora costata	medium	Remove
2951	RBG land	Eucalyptus tereticornis	medium	Remove
2952	RBG land	Eucalyptus tereticornis	medium	Remove
2953	RBG land	Eucalyptus tereticornis	medium	Remove
2954	RBG land	Eucalyptus botryoides	medium	Remove
2955	RBG land	Eucalyptus botryoides	medium	Remove
2958	RBG land	Angophora costata	medium	Remove
2965	RBG land	Eucalyptus tereticornis	medium	Remove
2973	RBG land	Eucalyptus tereticornis	medium	Remove
2979	RBG land	Eucalyptus tereticornis	medium	Remove
2980	RBG land	Angophora costata	medium	Remove
2982	RBG land	Eucalyptus tereticornis	medium	Remove
2983	RBG land	Angophora costata	medium	Remove
2984	RBG land	Eucalyptus tereticornis	medium	Remove
2985	RBG land	Angophora costata	medium	Remove
2986	RBG land	Eucalyptus tereticornis	medium	Remove
2987	RBG land	Eucalyptus saligna x botryoides	medium	Remove
2990	RBG land	Banksia integrifolia	medium	Remove
2991	RBG land	Eucalyptus tereticornis	medium	Remove
2994	RBG land	Eucalyptus tereticornis	medium	Remove
2997	RBG land	Ficus rubiginosa	medium	Remove
2998	RBG land	Ficus rubiginosa	medium	Remove
2999	RBG land	Ficus rubiginosa	medium	Remove
3001	RBG land	Eucalyptus tereticornis	medium	Remove
3006	RBG land	Eucalyptus botryoides	medium	Remove
3692	RBG land	Eucalyptus sp.	medium	Remove
3710	RBG land	Eucalyptus botryoides	medium	Remove
3712	RBG land	Eucalyptus tereticornis	medium	Remove
4435	RBG land	Eucalyptus tereticornis	medium	Remove
4437	RBG land	Eucalyptus (saligna x botryoides)	medium	Remove
4450	RBG land	Eucalyptus tereticornis	medium	Remove
4452	RBG land	Callitris macleayana	medium	Remove
4453	RBG land	Eucalyptus botryoides	medium	Remove
4459	RBG land	Eucalyptus tereticornis	medium	Remove
4459	RBG land	Eucalyptus sp.	medium	Remove
4820	RBG land	Angophora costata	medium	Remove
4821	RBG land	Angophora costata	medium	Remove
4822	RBG land	Angophora costata	medium	Remove
4842	RBG land	Syncarpia glomulifera	medium	Remove
4860	RBG land	Eucalyptus tereticornis	medium	Remove
4820a	RBG land	Angophora costata	medium	Remove
860	RBG land	Angophora costata	medium	Retain
865	RBG land	Angophora costata	medium	Retain
1208	RBG land	Ficus macrophylla	medium	Retain
1209	RBG land	Ficus macrophylla	medium	Retain
2350	RBG land	Eucalyptus tereticornis	medium	Retain
2351	RBG land	Flindersia australis	medium	Retain
2352	RBG land	Flindersia australis	medium	Retain
2353	RBG land	Flindersia australis	medium	Retain
2354	RBG land	Flindersia australis	medium	Retain
2355	RBG land	Flindersia australis	medium	Retain
2356	RBG land	Agathis robusta	medium	Retain
2357	RBG land	Agathis robusta	medium	Retain
2358	RBG land	Agathis robusta	medium	Retain
2359	RBG land	Agathis robusta	medium	Retain
2360	RBG land	Agathis robusta	medium	Retain
2437	RBG land	Ficus macrophylla	medium	Retain

2908	RMS land	Eucalyptus tereticornis	medium	Remove
2912	RMS land	Eucalyptus tereticornis	medium	Remove
2913	RMS land	Angophora costata	medium	Remove
2915	RMS land	Eucalyptus tereticornis	medium	Remove
2916	RMS land	Eucalyptus tereticornis	medium	Remove
2920	RMS land	Eucalyptus botryoides	medium	Remove
2405	RMS land	Angophora costata	medium	Retain
2406	RMS land	Angophora costata	medium	Retain
2407	RMS land	Angophora costata	medium	Retain
2408	RMS land	Angophora costata	medium	Retain
2409	RMS land	Angophora costata	medium	Retain
2410	RMS land	Angophora costata	medium	Retain
2411	RMS land	Angophora costata	medium	Retain
4738	RMS land	Angophora costata	medium	Retain
4739	RMS land	Angophora costata	medium	Retain

2944	RBG land	Eucalyptus botryoides	medium	Retain
2947	RBG land	Eucalyptus tereticornis	medium	Retain
2948	RBG land	Eucalyptus robusta	medium	Retain
2950	RBG land	Eucalyptus tereticornis	medium	Retain
2970	RBG land	Eucalyptus botryoides	medium	Retain
3000	RBG land	Eucalyptus botryoides	medium	Retain
3007	RBG land	Eucalyptus tereticornis	medium	Retain
3485	RBG land	Callitris macleayana	medium	Retain
3726	RBG land	Eucalyptus robusta	medium	Retain
4451	RBG land	Eucalyptus botryoides	medium	Retain
4671	RBG land	Ficus rubiginosa var. glabrescens	medium	Retain
4926	RBG land	Lophostemon confertu	medium	Retain
1227	RBG land	Ficus macrophylla	medium	Retain
4578	RBG land	Livistona australis	medium	Transplant
4579	RBG land	Livistona australis	medium	Transplant
4580	RBG land	Livistona australis	medium	Transplant
4581	RBG land	Livistona australis	medium	Transplant
2413	RMS land	Angophora costata	medium	Remove
2416	RMS land	Angophora costata	medium	Remove
2417	RMS land	Angophora costata	medium	Remove
2419	RMS land	Angophora costata	medium	Remove
2422	RMS land	Angophora costata	medium	Remove
2423	RMS land	Angophora costata	medium	Remove
2426	RMS land	Angophora costata	medium	Remove
2427	RMS land	Angophora costata	medium	Remove
2428	RMS land	Angophora costata	medium	Remove
2430	RMS land	Angophora costata	medium	Remove
2432	RMS land	Angophora costata	medium	Remove
2433	RMS land	Angophora costata	medium	Remove
2895	RMS land	Angophora costata	medium	Remove
2901	RMS land	Eucalyptus botryoides	medium	Remove
2904	RMS land	Eucalyptus tereticornis	medium	Remove
2905	RMS land	Eucalyptus tereticornis	medium	Remove
2907	RMS land	Eucalyptus tereticornis	medium	Remove

Medium	Remove	79
Significant	Retain	45
sub total	Transplant	4
		128



Tree No	RMS/RBG	Botanical Name	Significance	Action
22	Other (outside site)	Ficus rubiginosa	Low	Remove
23	Other (outside site)	Ficus rubiginosa	Low	Remove
24	Other (outside site)	Ficus rubiginosa	Low	Retain
25	Other (outside site)	Ficus rubiginosa	Low	Retain
26	Other (outside site)	Ficus rubiginosa	Low	Retain
27	Other (outside site)	Ficus rubiginosa	Low	Retain
29	Other (outside site)	Ficus rubiginosa	Low	Retain
30	Other (outside site)	Ficus rubiginosa	Low	Retain
35	Other (outside site)	Ficus rubiginosa	Low	Retain
37	Other (outside site)	Ficus rubiginosa	Low	Retain
38	Other (outside site)	Ficus rubiginosa	Low	Retain
2383	RBG land	Corymbia ficifolia	Low	Remove
2384	RBG land	Corymbia ficifolia	Low	Remove
2385	RBG land	Corymbia ficifolia	Low	Remove
2386	RBG land	Corymbia ficifolia	Low	Remove
2387	RBG land	Corymbia ficifolia	Low	Remove
2388	RBG land	Corymbia ficifolia	Low	Remove
2389	RBG land	Corymbia ficifolia	Low	Remove
2390	RBG land	Corymbia ficifolia	Low	Remove
2392	RBG land	Corymbia ficifolia	Low	Remove
2393	RBG land	Corymbia ficifolia	Low	Remove
2394	RBG land	Corymbia ficifolia	Low	Remove
2888	RBG land	Angophora costata	Low	Remove
2889	RBG land	Eucalyptus botryoides	Low	Remove
2934	RBG land	Eucalyptus (saligna x botryoides)	Low	Remove
2941	RBG land	Angophora costata	Low	Remove
2942	RBG land	Angophora costata	Low	Remove
2957	RBG land	Eucalyptus botryoides	Low	Remove
2963	RBG land	Eucalyptus tereticornis	Low	Remove
2976	RBG land	Eucalyptus botryoides	Low	Remove
2978	RBG land	Eucalyptus tereticornis	Low	Remove
3004	RBG land	Eucalyptus tereticornis	Low	Remove
3690	RBG land	Eucalyptus botryoides	Low	Remove
3708	RBG land	Acacia decurrens	Low	Remove
3711	RBG land	Eucalyptus botryoides	Low	Remove
4433	RBG land	Eucalyptus tereticornis	Low	Remove
4436	RBG land	Eucalyptus botryoides	Low	Remove
4458	RBG land	Eucalyptus tereticornis	Low	Remove
4461	RBG land	Eucalyptus tereticornis	Low	Remove
4714	RBG land	Ficus rubiginosa	Low	Remove
4815	RBG land	Eucalyptus tereticornis	Low	Remove
4819	RBG land	Eucalyptus botryoides	Low	Remove
2930a	RBG land	Eucalyptus botryoides	Low	Remove
2951a	RBG land	Angophora costata	Low	Remove
19	RBG land	Melaleuca linariifolia	Low	Retain
20	RBG land	Melaleuca linariifolia	Low	Retain
863	RBG land	Angophora costata	Low	Retain
2945	RBG land	Eucalyptus botryoides	Low	Retain
2971	RBG land	Eucalyptus botryoides	Low	Retain
4817	RBG land	Eucalyptus botryoides	Low	Retain
2899	RMS land	Eucalyptus botryoides	Low	Remove
2910	RMS land	Eucalyptus tereticornis	Low	Remove
4431	RMS land	Angophora costata	Low	Remove
4432	RMS land	Angophora costata	Low	Remove

	Remove	
Low	39	
significant	15	
sub total	0	54



Tree No	Botanical Name	Significance	Action/Comment
1227	Ficus macrophylla	medium	Retain
2405	Angophora costata	medium	Retain
2406	Angophora costata	medium	Retain
2407	Angophora costata	medium	Retain
2408	Angophora costata	medium	Retain
2409	Angophora costata	medium	Retain
2410	Angophora costata	medium	Retain
2411	Angophora costata	medium	Retain
2970	Eucalyptus botryoides	medium	Retain
2971	Eucalyptus botryoides	Low	Retain
2972	Eucalyptus tereticornis	medium	Retain
3000	Eucalyptus botryoides	medium	Retain
3007	Eucalyptus tereticornis	medium	Retain
3726	Eucalyptus robusta	medium	Retain
4738	Angophora costata	medium	Retain
4739	Angophora costata	medium	Retain
4817	Eucalyptus botryoides	Low	Retain
1363	Phoenix sylvestris	High	Transplant

- Trees planted by RMS
- Trees planted by RBG
- Tree / palm to be retained
- Tree / Palm to be relocated
- Tree / Palm - new location

MCGREGOR COXALL
 McGregor Coxall Pty Ltd. ACN 082 334 290
 Sydney: +61 2 9977 3853
 Melbourne: +61 3 9999 1608
 sydney@mcgregorcoxall.com
 melbourne@mcgregorcoxall.com
 Web: www.mcgregorcoxall.com

Client
 Art Gallery NSW

Project No. 458SL
AGNSW Expansion: Sydney Modern Project
Address
 Art Gallery Rd, Sydney, NSW, 2000
Phase
 Development Application

Key Plan

Scale & Orientation
 1:1000 @ A3

 All dimensions are in millimetres unless otherwise noted. Do not scale from this drawing.

Revision Log

Rev	Revision Description
C	REVISED SSSA
B	Response to SSSA
A	Response to SSSA

By/Checked	Date
PM/AD	01/08/18
AD	4/4/18
AD	28/03/18

Sheet Title
 Trees_Changes from lodged DA
Sheet No.
 LD_DA_00-21
Rev
C

Name	SPRING			SUMMER			AUTUMN			WINTER			Fauna/feature
	early	mid	late	early	mid	late	early	mid	late	early	mid	late	
Tree													
Acacia decurrens Early Black Wattle, Sydney Green Wattle													
Height 10 - 15m Spread 3.5 - 6m													
Angophora costata Sydney Red Gum, Smooth-barked Apple													
Height 15 - 20m Spread 6 - 10m													
Banksia integrifolia Coastal Banksia													
Height 5 - 10m Spread 3.5 - 6m													
Banksia serrata Old Man Banksia													
Height 3 - 5m Spread 3.5 - 6m													
Callistemon viminalis 'King Park Special' Weeping Bottlebrush Kings Park Special													
Height 3 - 5m Spread 3.5 - 6m													
Chamaerops humilis Mediterranean Fan Palm													
Height 3 - 5m Spread 1.2 - 2.0m													
Corymbia gummifera (syn. Eucalyptus) Red Bloodwood													
Height 15 - 20m Spread 6 - 10m													
Elaeocarpus reticulatus Blueberry Ash													
Height 5 - 10m Spread 6 - 10m													
Eucalyptus botryoides Bangalay, Southern Mahogany													
Height over 30m Spread 10 - 15m													
Eucalyptus globoidea White Stringybark													
Height 25 - 30m Spread 3.5 - 6m													
Eucalyptus haemastoma Scribbly Gum													
Height 5 - 10m Spread 6 - 10m													
Eucalyptus macrandra Long-Flowered Marlock													
Height 5 - 10m Spread 6 - 10m													
Eucalyptus pilularis Blackbutt													
Height over 30m Spread 6 - 10m													
Eucalyptus piperita Sydney Peppermint													
Height 15 - 20m Spread 6 - 10m													

Name	SPRING			SUMMER			AUTUMN			WINTER			Fauna/feature
	early	mid	late	early	mid	late	early	mid	late	early	mid	late	
Eucalyptus punctata Grey Gum													
Height 25 - 30m Spread 3.5 - 6m													
Eucalyptus saligna Sydney Blue Gum													
Height over 30m Spread 6 - 10m													
Eucalyptus sieberi Black Ash													
Height over 30m Spread 6 - 10m													
Eucalyptus sparsifolia Narrow-leaved Stringybark													
Height 15 - 20m Spread 3.5 - 6m													
Eucalyptus tereticornis Forest Red Gum, Burringoa													
Height over 30m Spread 6 - 10m													
Hakea dactyloides Finger Hakea, Broad-leaved Hakea													
Height 1.50 - 3m Spread 1.2 - 2.0m													
Livistona australis Cabbage Tree Palm/Fan Palm													
Height 25 - 30m Spread 3.5 - 6m													
Melaleuca quinquenervia Broad-leaved Paperbark													
Height 10 - 15m Spread 3.5 - 6m													
Syzygium smithii Creek Lilly Pilly, narrow-leaved Lilly Pilly													
Height 15 - 20m Spread 2.0 - 3.5m													
Shrub													
Acacia covenyi Blue Bush													
Height 3 - 5m Spread 0.9 - 1.2m													
Acacia longifolia var. longifolia Sydney Golden Wattle													
Height 3 - 5m Spread 2.0 - 3.5m													
Acacia longissima Narrow-leaf Wattle													
Height 3 - 5m Spread 0.9 - 1.2m													
Acacia suaveolens Sweet-Scented Wattle													
Height 0.90 - 1.50m Spread 0.9 - 1.2m													
Acacia terminalis Sunshine Wattle													
Height 0.90 - 1.50m Spread 1.2 - 2.0m													

Note:
Refer "APPENDIX A_PLANT_ADDITIONAL_IMAGES"
for plant images in larger format

Issue Log

Rev	Revision Description	By	Checked	Date
F	SSDA Submission	AD	AM	26/3/18
G	FINAL SSDA	AD	AM	5/4/18
H	REVISED SSDA	PM	ADAM	01/08/18

Name	SPRING			SUMMER			AUTUMN			WINTER			Fauna/feature
	early	mid	late	early	mid	late	early	mid	late	early	mid	late	
Other													
Myrtaceae													
Lilly Pilly													
Height 5 - 10m Spread 6 - 10m													
Herb													
Centella asiatica													
Swamp Pennywort													
Height 0.0 - 0.3m Spread 0.0 - 0.3m													
Dichondra repens													
Kidney Weed													
Height 0.0 - 0.3m Spread 0.9 - 1.2m													
Ground Cover													
Austrodanthonia tenuior (syn. Danthonia Wallaby Grass													
Height 0.45 - 0.6m Spread 0.0 - 0.3m													
Dianella caerulea													
Patio Lily, Blue Flax-lily													
Height 0.45 - 0.60m Spread 0.3 - 0.6m													
Dichelachne crinita													
Longhair Plume Grass													
Height 0.75 - 0.90m Spread 0.3 - 0.6m													
Entolasia marginata													
Sprawling Panic, Bordered Panic													
Height 0.75 - 0.9m Spread 0.3 - 0.6m													
Gonocarpus teucrioides													
Germander Haspwort													
Height 0.3 - 0.45m Spread 0.0 - 0.3m													
Liriope spicata													
Creeping Lily Turf													
Height 0.0 - 0.3m Spread 0.0 - 0.3m													
Lomandra fluviatilis													
River Lomandra													
Height 0.45 - 0.6m Spread 0.3 - 0.6m													
Lomandra longifolia													
Spiny-headed Mat-Rush													
Height 0.60 - 0.75m Spread 0.9 - 1.2m													
Lomandra multiflora													
Many-flowered Mat-rush													
Height 0.30 - 0.45m Spread 0.0 - 0.3m													
Microlaena stipoides													
Weeping Grass, Meadow Rice Grass													
Height 0.45 - 0.60m Spread 0.6 - 0.9m													
Rhodanthe chlorocephala													
Everlasting Daisy, Paper Daisy													
Height 0.30 - 0.45m Spread 0.3 - 0.6m													

Name	SPRING			SUMMER			AUTUMN			WINTER			Fauna/feature
	early	mid	late	early	mid	late	early	mid	late	early	mid	late	
Tree													
Acacia decurrens													
Early Black Wattle, Sydney Green Wattle													
Height 10 - 15m Spread 3.5 - 6m													
Angophora costata													
Sydney Red Gum, Smooth-barked Apple													
Height 15 - 20m Spread 6 - 10m													
Banksia integrifolia													
Coastal Banksia													
Height 5 - 10m Spread 3.5 - 6m													
Banksia serrata													
Old Man Banksia													
Height 3 - 5m Spread 3.5 - 6m													
Callistemon viminalis 'King Park Special'													
Weeping Bottlebrush Kings Park Special													
Height 3 - 5m Spread 3.5 - 6m													
Chamaerops humilis													
Mediterranean Fan Palm													
Height 3 - 5m Spread 1.2 - 2.0m													
Corymbia gummifera (syn. Eucalyptus Red Bloodwood													
Height 15 - 20m Spread 6 - 10m													
Elaeocarpus reticulatus													
Blueberry Ash													
Height 5 - 10m Spread 6 - 10m													
Eucalyptus botryoides													
Bangalay, Southern Mahogany													
Height over 30m Spread 10 - 15m													
Eucalyptus globoidea													
White Stringybark													
Height 25 - 30m Spread 3.5 - 6m													
Eucalyptus haemastoma													
Scribbly Gum													
Height 5 - 10m Spread 6 - 10m													
Eucalyptus macrandra													
Long-Flowered Marlock													
Height 5 - 10m Spread 6 - 10m													
Eucalyptus pilularis													
Blackbutt													
Height over 30m Spread 6 - 10m													
Eucalyptus piperita													
Sydney Peppermint													
Height 15 - 20m Spread 6 - 10m													

Note:
Refer "APPENDIX A_PLANT_ADDITIONAL_IMAGES"
for plant images in larger format

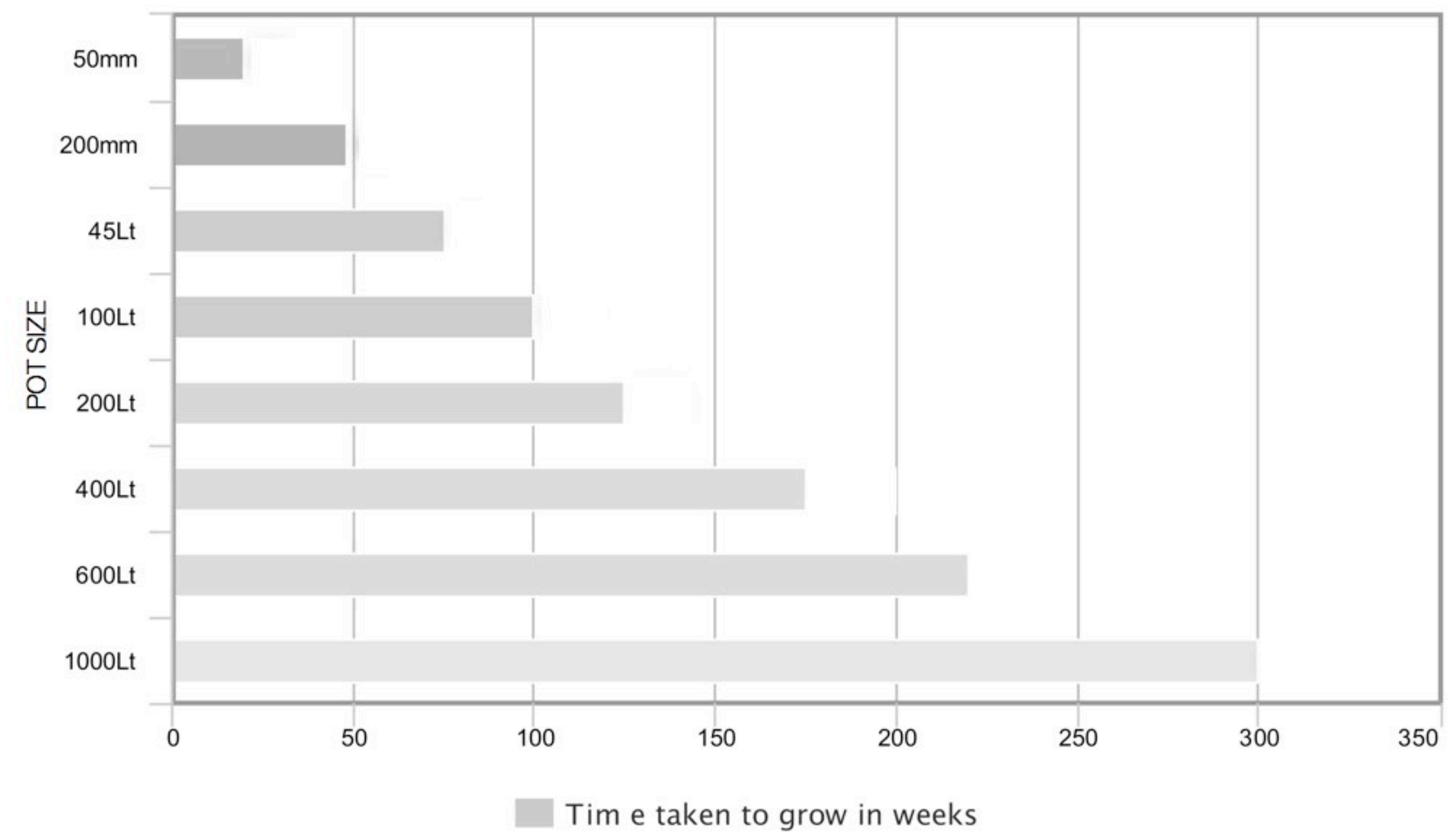
Name	SPRING			SUMMER			AUTUMN			WINTER			Fauna/ feature
	early	mid	late	early	mid	late	early	mid	late	early	mid	late	
Scaevola ramosissima Snake flower, Purple Fanflower Height 0.45 - 0.6m Spread 0.0 - 0.3m Erect													
Baumea articulata Jointed Twig-rush Height 0.9 - 1.5m Spread 0.9 - 1.2m Fragrant Rush													
Baumea rubiginosa Soft Twig-rush Height 0.75 - 0.90m Spread - Fragrant Rush													
Juncus usitatus Common Rush Height 0.90 - 1.50m Spread 0.6 - 0.9m Fragrant Rush													
Philydrum lanuginosum Woolly Waterlily, Frogmouth Height 1.50 - 3m Spread 0.9 - 1.2m Fragrant Rush													
Schoenoplectus validus River Club-rush Height 1.5 - 3m Spread 0.3 - 0.6m Fragrant Sedge													

CONTAINER SIZE	DIMENSIONS	WEIGHT	HANDLING	PLANT TYPE	PLANT HEIGHT RANGE
200mm pot	200mm x 190mm	2.4kg 8.4kg	By hand	Shrubs, trees, climbers & limited strappy leaf / grasses	0.4 - 0.8m
600lt bag	1050mm x 650mm	450kg	Large Machine / Crane Truck	Trees (evergreen & deciduous)	4-5m
1000lt bag	1200mm x 700mm	1,100kg	Crane Truck	Trees (evergreen & deciduous)	6-8m

Species	Size	Years to full maturity
Acacia covenyi	1000lt	7-10 years
Acacia decurrens	600lt	7-10 years
Acacia logissima	1000lt	7-10 years
Angophora costata	1000lt	20-25 years
Banksia integrifolia	1000lt	10-15 years
Banksia serrata	600lt	10-15 years
Eucalyptus botryoides	1000lt	20-25 years
Eucalyptus globoidea	1000lt	20-25 years
Eucalyptus haemastoma	1000lt	20-25 years
Eucalyptus pilularis	1000lt	20-25 years
Eucalyptus saligna	1000lt	20-25 years
Eucalyptus sieberi	1000lt	20-25 years
Eucalyptus tereticornis	1000lt	20-25 years
Melaleuca quinquenervia	1000lt	20-25 years

Climber for Gallery 3

Name	SPRING			SUMMER			AUTUMN			WINTER			Fauna/ feature
	early	mid	late	early	mid	late	early	mid	late	early	mid	late	
Grevillea poorinda royal mantle Height 0.0 - 0.30m Spread 0.3 - 0.6m													
Hibbertia scandens Golden Guinea Flower, Snake Vine Height 0.0 - 0.30m Spread 3.5 - 6m													
Pandorea pandorana Wonga Wonga Vine Height 3 - 5m Spread 0.6 - 0.9m													



meta-chart.com

Note:
Refer "APPENDIX A_PLANT_ADDITIONAL_IMAGES"
for plant images in larger format



McGregor Coxall Pty Ltd. ACN 082 334 290
Sydney: +61 2 9977 3853
Melbourne: +61 3 9999 1608
sydney@mcgregorcoxall.com
melbourne@mcgregorcoxall.com
Web: www.mcgregorcoxall.com

Client
Art Gallery NSW

Key Consultants
SANAA
Architectus

Project Name
AGNSW Expansion: Sydney Modern

Project No.
458SL

Address
Art Gallery Rd, Sydney, NSW, 2000

Issue Log

H	Response to SSDA	AD	AM	6/4/18
I	REVISED SSDA	PW	ADAM	01/08/18
J	REVISED SSDA - with Gallery 3 climber mix	PW	ADAM	7/8/18

Rev	Revision Description	By	Checked	Date

Phase
Development Application

Sheet Title
Plant Palette

Sheet No.
LD_DA_30-03

Rev
J



- Trees planted by RMS
- Trees planted by RBG
- Tree / palm to be retained
- Tree / palm to be removed
- Tree / Palm to be relocated
- Tree / Palm - new location

High Significant	Remove	6
	Retain	28
	Transplant	4
sub total		38
Medium Significant	Remove	79
	Retain	45
	Transplant	4
sub total		128
Low significant	Remove	39
	Retain	15
	Transplant	0
sub total		54
Remove		124
Retain		88
Transplant		8
Total		220

MCGREGOR COXALL
 McGregor Coxall Pty Ltd. ACN 082 334 290
 Sydney: +61 2 9977 3853
 Melbourne: +61 3 9999 1608
 sydney@mcgregorcoxall.com
 melbourne@mcgregorcoxall.com
 Web: www.mcgregorcoxall.com

Client
 Art Gallery NSW

Key Consultants
 SANAA
 Architectus

Project Name
AGNSW Expansion: Sydney Modern Project

Project No.
 458SL

Address
 Art Gallery Rd, Sydney, NSW, 2000

Key Plan

Scale
 1: 500 @ A1

Scale Bar
 0 5 10 15 20 25 M

All dimensions are in millimetres unless otherwise noted. Do not scale from this drawing.

Orientation

Issue Log

Q	Response to SSDA	AD	AM	4/4/18
R	Final SSDA	AD	AM	5/4/18
S	REVISED SSDA	PM/ADAM		01/06/18

Rev **Revision Description** **By** **Checked** **Date**

Phase
 Development Application

Sheet Title
 Existing tree plan

Sheet No.
 LD_DA_30-04

Rev
S

PLANTING SCHEDULE			
Symbol	Quantity	Latin Name	Size
8	8	Acacia coveynyi	1000 L
13	13	Acacia decurrens	600L
48	48	Angophora costata	1000 L
15	15	Banksia integrifolia	1000 L
10	10	Banksia serrata	600 L
12	12	Eucalyptus botryoides	1000 L
5	5	Eucalyptus globoides	1000 L
40	40	Eucalyptus haemastoma	1000 L
3	3	Eucalyptus pilularis	1000 L
14	14	Eucalyptus saligna	1000 L
15	15	Eucalyptus sieberi	1000 L
32	32	Eucalyptus sparsifolia	1000 L
6	6	Eucalyptus tereticornis	1000 L
51	51	Melaleuca quinquenervia	1000 L
1	1	Phoenix canariensis	1000 L
Total			273

RBG LAND & OTHERS			
Symbol	Quantity	Latin Name	Size
13	13	Acacia decurrens	600L
17	17	Angophora costata	1000 L
15	15	Banksia integrifolia	1000 L
10	10	Banksia serrata	600 L
12	12	Eucalyptus botryoides	1000 L
5	5	Eucalyptus globoides	1000 L
40	40	Eucalyptus haemastoma	1000 L
3	3	Eucalyptus pilularis	1000 L
14	14	Eucalyptus saligna	1000 L
15	15	Eucalyptus sieberi	1000 L
16	16	Eucalyptus sparsifolia	1000 L
6	6	Eucalyptus tereticornis	1000 L
51	51	Melaleuca quinquenervia	1000 L
1	1	Phoenix canariensis	1000 L

RMS LAND			
Symbol	Quantity	Latin Name	Size
8	8	Acacia coveynyi	1000 L
31	31	Angophora costata	1000 L
16	16	Eucalyptus sparsifolia	1000 L

Species	Size	Years to full maturity
Acacia coveynyi	1000lt	7-10 years
Acacia decurrens	600lt	7-10 years
Acacia loggissima	1000lt	7-10 years
Angophora costata	1000lt	20-25 years
Banksia integrifolia	1000lt	10-15 years
Banksia serrata	600lt	10-15 years
Eucalyptus botryoides	1000lt	20-25 years
Eucalyptus globoides	1000lt	20-25 years
Eucalyptus haemastoma	1000lt	20-25 years
Eucalyptus pilularis	1000lt	20-25 years
Eucalyptus saligna	1000lt	20-25 years
Eucalyptus sieberi	1000lt	20-25 years
Eucalyptus tereticornis	1000lt	20-25 years
Melaleuca quinquenervia	1000lt	20-25 years

MCGREGOR COXALL
 McGregor Coxall Pty Ltd. ACN 082 334 290
 Sydney: +61 2 9977 3853
 Melbourne: +61 3 9999 1608
 sydney@mcgregorcoxall.com
 melbourne@mcgregorcoxall.com
 Web: www.mcgregorcoxall.com

Client
 Art Gallery NSW

Key Consultants
 SANAA
 Architectus

Project Name
 AGNSW Expansion: Sydney Modern Project

Project No.
 458SL

Address
 Art Gallery Rd, Sydney, NSW, 2000

Key Plan

Scale
 1: 500 @ A1

Scale Bar
 0 5 10 15 20 25 M

All dimensions are in millimetres unless otherwise noted. Do not scale from this drawing.

Orientation

Issue Log

R	Response to SSDA	AD	AM	5/4/18
S	Response to SSDA for client comments	AD	AM	6/4/18
T	REVISED SSDA	PM/ADAM		01/06/18

Rev **Revision Description**

By **Checked**

Date

Phase

Development Application

Sheet Title
 Trees proposed

Sheet No.
 LD_DA_30-05

Rev
T

