



Entry Plaza



## Entry Plaza

Along the northern façade of the existing Art Gallery, a new public landscaped art garden is created, and a portion is covered by the Entry Plaza along Art Gallery Road. The windows from the existing building and new gallery will look towards this new garden to create a Gallery that refers to the surrounding landscape.

### Nature Within

An landscape of approximately 22m in diameter is located towards the southwest corner of the Entry Plaza. Some trees are planted here to provide shade on sunny days but also to create a relationship to the Royal Botanic Garden, Domain, and to other parts of Sydney landscape and beyond. This landscape zone will also be used to display commissioned art.

### Canopy

The Entry Canopy is an undulating glass plane supported by 35 steel columns on a 7.3 x 8 grid. The purpose of the position of the Entry Plaza and Canopy is to create a social and public connection between the existing building and new galleries, and also to connect the new land bridge garden to the Domain. The covered area will create a space with a variety of environment during the year. Depending on the weather, visitors can find a space that is more comfortable within this singular space.

### Sun protection

The sun protection for plaza activities is achieved in layers. The first protective layer is the undulating glass. Two sheets of glass are laminated which eliminate UV rays to protect the public. The glass is also treated with printed frits (refer to fig 4 below). This fritting provides a soft shade by cutting some sunlight. In addition, another layer of sunshade will be provided, along with landscaping.

The plaza has trees planted throughout to provide connection to the Royal Botanic Garden and Domain. These trees provide a soft and dynamic shaded area in close proximity to other plaza activities.

Three secondary roofs in various sizes are provided to deliver more shade but are placed to create a more intimate scaled area within the large canopy. These devices create a shelter from the sun and a space that feels slightly more private to encourage smaller group meetings, or activities.

The aim of the three elements together is to create the most hours of comfort throughout the year - to provide some shade on warm days and space with warmth on a cold day.

### Rain Protection

The undulating waves of glass are sealed and the entire surface tilts slightly to the south. An area of 1395m<sup>2</sup> is protected from rain.

### Wind Protection

The Entry Pavilion and Gallery 1 on the North East side of the Entry Plaza protects the Plaza from the north-eastern winds. Similarly, the Existing building is on the South East side of the Plaza, keeping the space comfortable throughout the year.

Please refer to the wind report for more detailed information.



fig 1 - Entry plaza with landscaping to provide shade

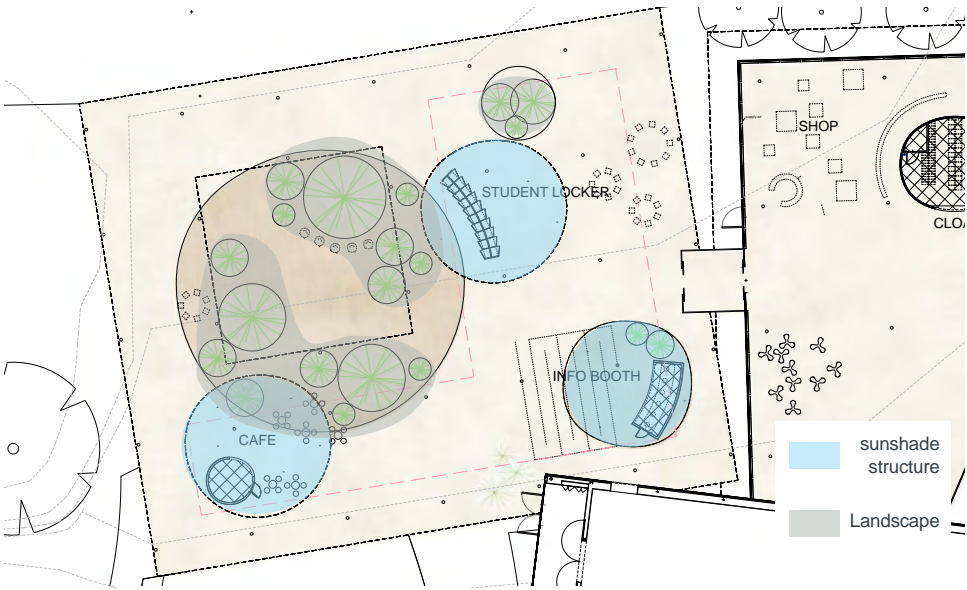


fig 2 - Sunshade diagram

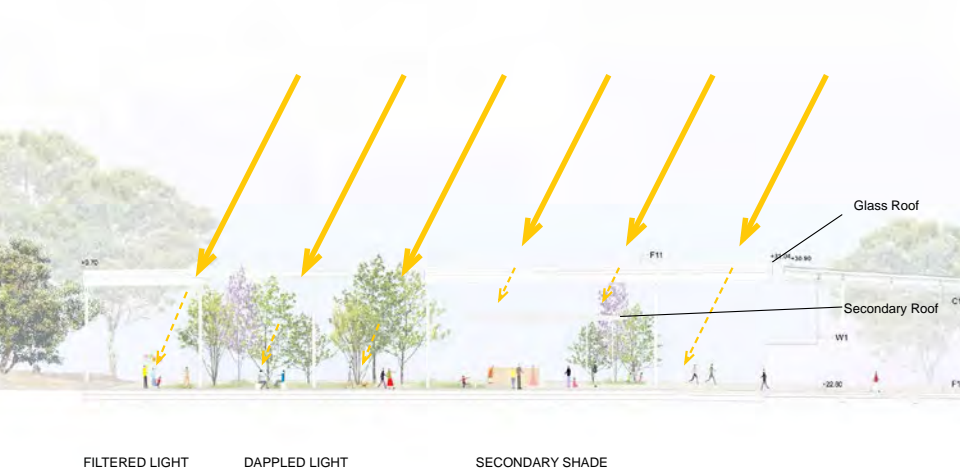


fig 3 - Sunshade diagram



fig 4 - Example of glass with sunshading treatment



# Entry Plaza

## General Use

The purpose of the Entry Plaza is to provide a meeting point for both the Gallery visitors and public passers-by. Adjacent to the Entrance to the Sydney Modern, is a large covered area of about 225m2 which can be used for tourists and visitors to gather when they arrive or leave the Gallery. There is also a large aperture in the canopy. The space below will be used for an art installation integrated into the landscape. The organization of the landscape will create smaller scale gathering spaces.

The main floor material of the Plaza is warm tone concrete. There are two zones that will be porous concrete material to take water from the aperture above.

## Info Desk

The main information desk will be set in the Entry Plaza, in between the existing and the new building. Adjacent to the entry point to the new Sydney Modern building, there is a booth set up for up to 6 staff and storage. The total area for the Info Desk is 12m2.

## Student Bag Storage

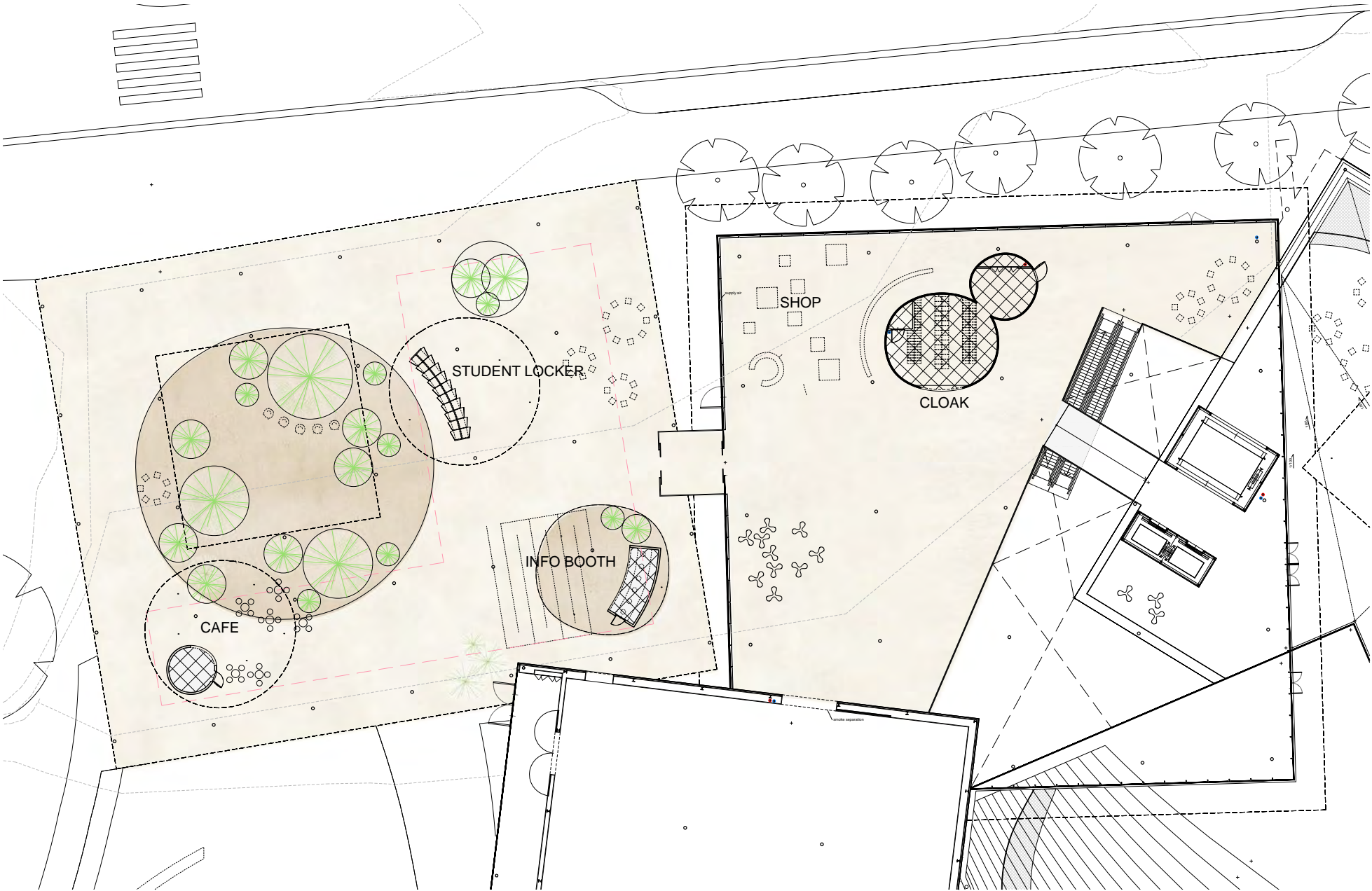
The Entry Plaza will be the gathering and greeting point for student groups. The student groups of 10-60 students will meet their docent here to unload their bags to begin their journey through the Gallery. The Entry Plaza provides much needed space for rain-protected gathering and marshalling of school groups, who need to enter the Gallery without their bags, yet return to them for lunch. Within the Plaza is a bag storage for students. It has a capacity to hold a total of 500 bags.

To maintain the view through the Plaza, the storage has a total height of 1.5m. It is lifted 500mm off of the ground plane to give the large volume a sense of lightness, like an object in the space.

## Coffee Kiosk

There is a small coffee kiosk on the South East side of the Plaza. It is an element that activates the Entry Plaza and helps provide a comfortable meeting place. This will be open outside of gallery hours to serve the commuters to the city in the morning and visitors waiting for functions in the afternoon.

The coffee kiosk is 10m2 and is 3m tall with several tables and chairs nearby.





# Connecting Sydney Modern to the Landscape

## Blurring building boundary with the site

The new Sydney Modern building consists of 7 pavilions predominantly over the fuel bunker. The pavilions are placed to avoid significant trees that exist on site. The uneven edge of the building brings landscape in between the pavilions. The shift and rotation orients each pavilion to the surroundings.

## Terraces

There are three accessible roofs in the new Sydney Modern building. These terraces are connected to each other through paths and can be accessed from the different levels of the building. Each terrace is landscaped to bring landscape closer to the visitors and their experience of the Gallery.

### View Terrace 1

View Terrace 1 is the first terrace that the visitors can access. It is accessible from the lift lobby within the Entry Pavilion. The visitors have a clear view out to the harbour with low plants surrounding them. There is a small roof to provide sunshading for visitors.

### View Terrace 2

View Terrace 2 is accessed from View Terrace 1 through a ramp. This terrace consists of a large gently sloping section followed by steps in the roof plane. The terrace steps down towards Potts Point and Woolloomooloo providing a different view.

This terrace is also surrounded by landscape of medium height to make an enclosed space.

### View Terrace 3

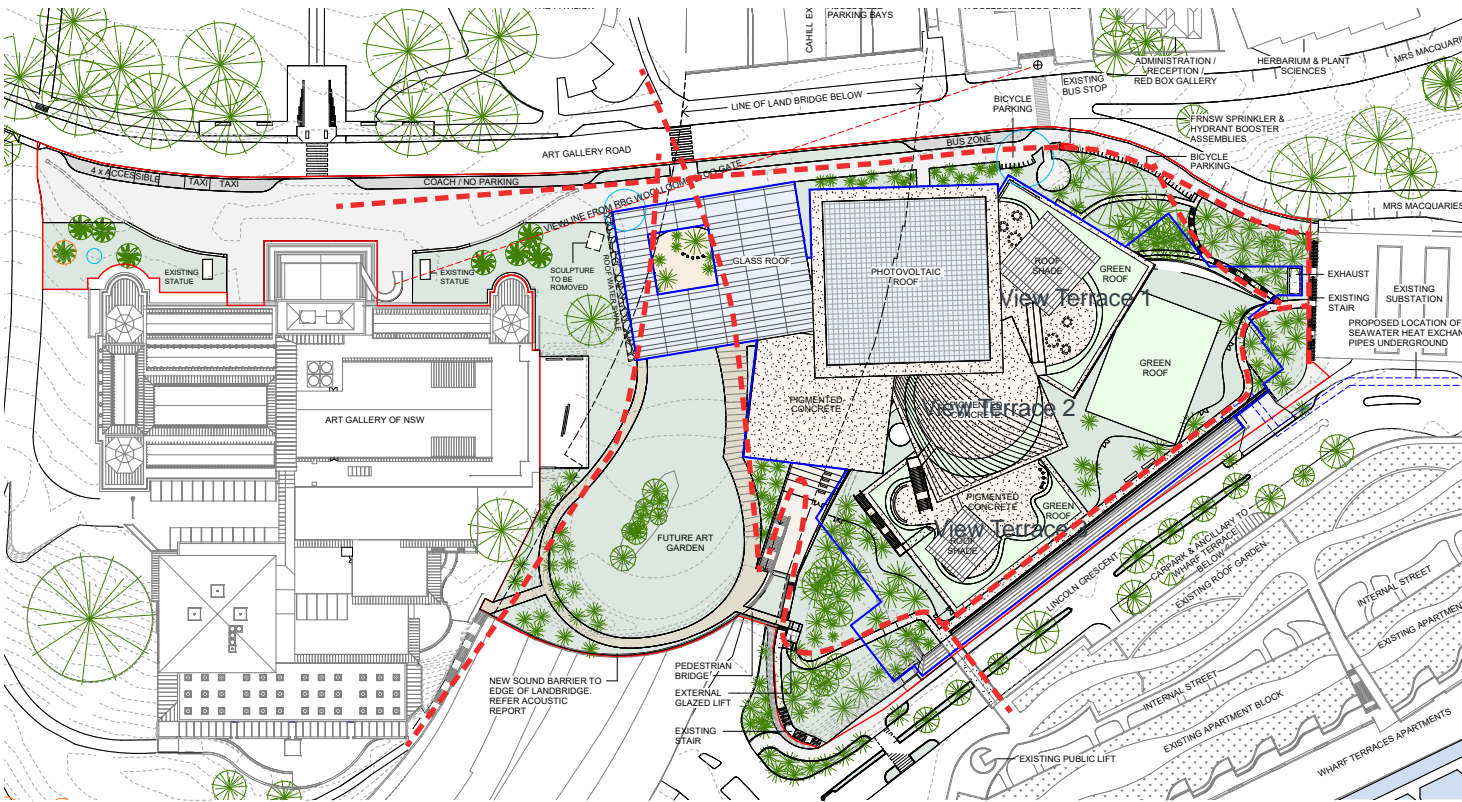
View Terrace 3 is a cafe terrace, with outdoor seating. There are varying types of landscape around this terrace to reduce the scale of the large rooftop.

The shaded area on this terrace has increased since the last exhibition of the scheme by 12m2. The sunshading structure is kept minimal to maintain the view from the Gallery to the harbour.

## Way-finding

The gallery volumes are not stacked but placed organically to create a three storey void connecting the Entry Level to the Foyer on LL2. All public programs are organized along the atrium space.

Signage and pictograms will be placed throughout the building and garden to guide visitors to their destinations.



Public path and Gallery terraces



View Terrace 1



View Terrace 2



View Terrace 3



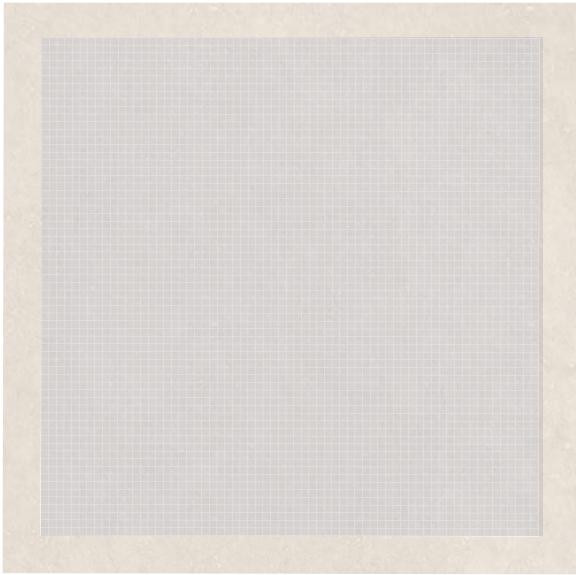
Roof Treatment

Landscaped Roof

The amount of landscaping over the building roof is balanced with the sustainability plan for reuse of rain water. A maximum of 20% of roof area has been allowed with this sustainability plan. The previously proposed scheme had a landscape roof coverage of 16%. The proposed scheme now has a total landscape roof coverage of 20%.

PV Roof

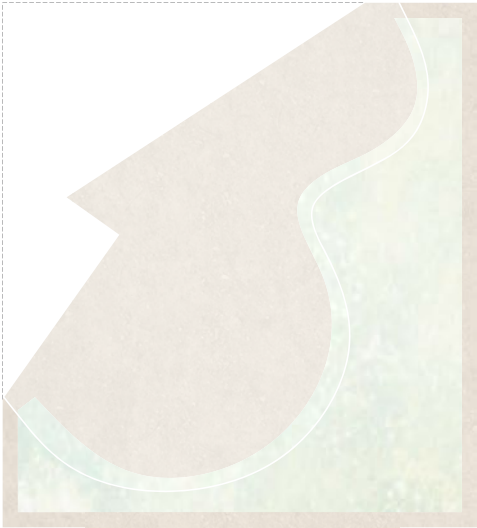
The Entry Pavilion roof is the most suited for PVs to be placed on as it faces the north and is not occupiable. The roofs that are occupiable or are visible from the Sydney Modern building or the Existing building are not covered with PVs. In the previous proposal, there was a total of 1000m2 of PV, and in the current proposal, there is a total of 1500m2 of PV over the Entry Pavilion.



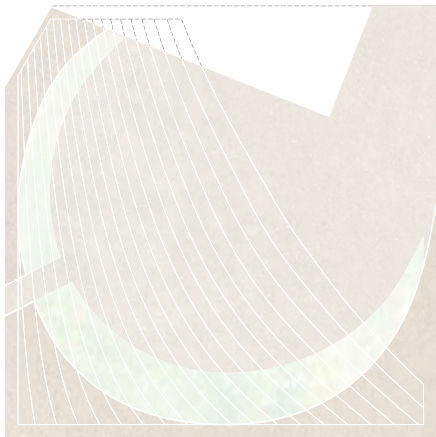
ENTRY PAVILION  
exterior roof = 2043 m<sup>2</sup>  
accessible = 0 m<sup>2</sup>  
pv = 1536 m<sup>2</sup>



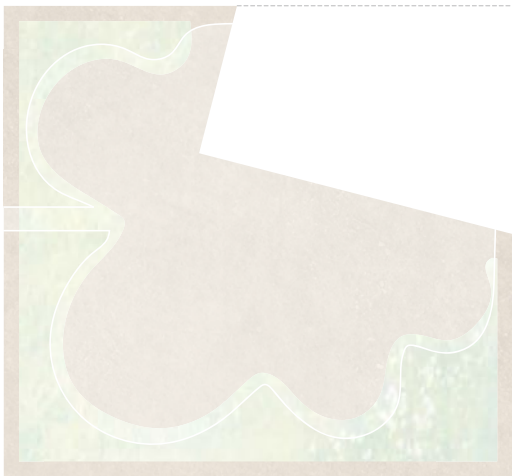
GALLERY 1  
exterior roof = 994 m<sup>2</sup>  
accessible = 0 m<sup>2</sup>  
landscape = 0 m<sup>2</sup>



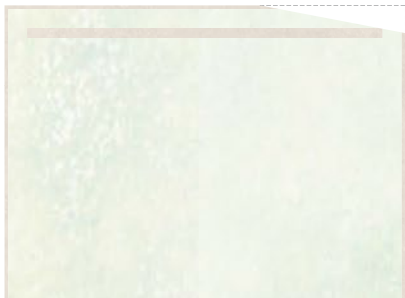
GALLERY 2  
exterior roof = 1206 m<sup>2</sup>  
accessible = 696 m<sup>2</sup>  
landscape = 483 m<sup>2</sup>



CAFE  
exterior roof = 1032 m<sup>2</sup>  
accessible = 823 m<sup>2</sup>  
landscape = 175 m<sup>2</sup>



GALLERY 3  
exterior roof = 1138 m<sup>2</sup>  
accessible = 737 m<sup>2</sup>  
landscape = 374 m<sup>2</sup>



MULTIPURPOSE  
exterior roof = 716 m<sup>2</sup>  
accessible = 0 m<sup>2</sup>  
landscape = 674 m<sup>2</sup>



# Entry Pavilion

## View into the gallery

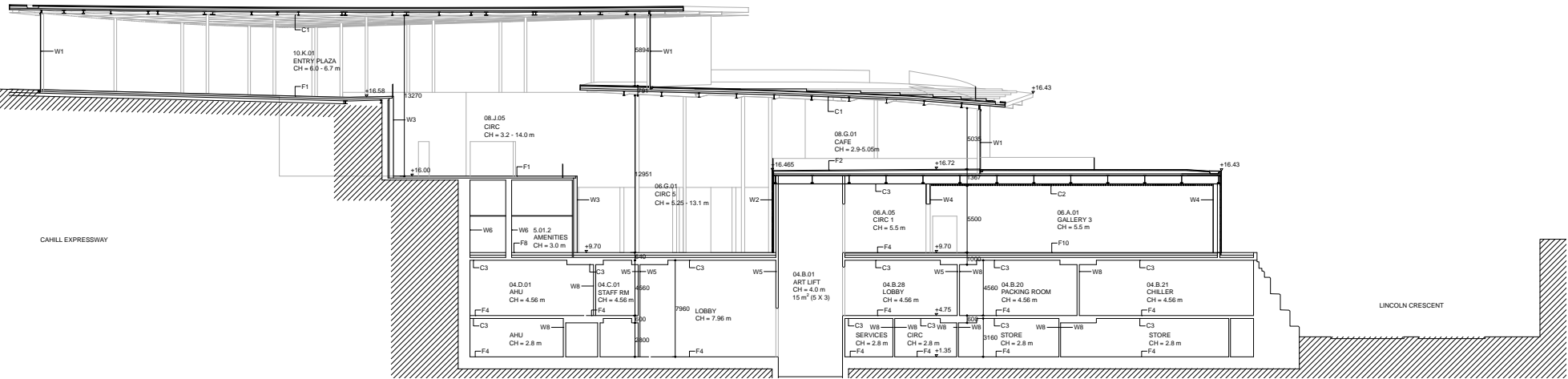
When visitors enter the Entry Pavilion, they will have a clear view into all 3 levels above the fuel bunker. The organization of the Gallery is clear from the Entry Level.

## View to the landscape

From the Entry Pavilion, there is a clear view out to the harbour. Through the visitor's descent down to LL2, there is a constant view to the outdoor landscape - it's a unique gallery visiting experience.



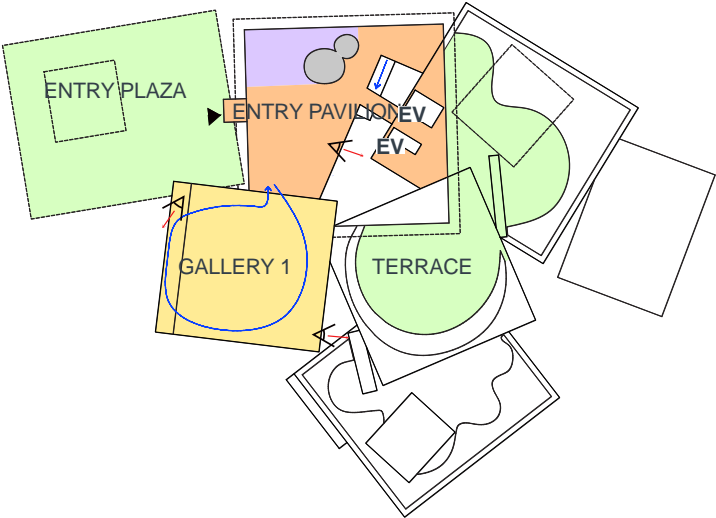
View to LL1 and LL2



Atrium view



# Circulation



The main circulation path takes visitors through the new building with views leading to the landscape or their next destination.

## Entry Level

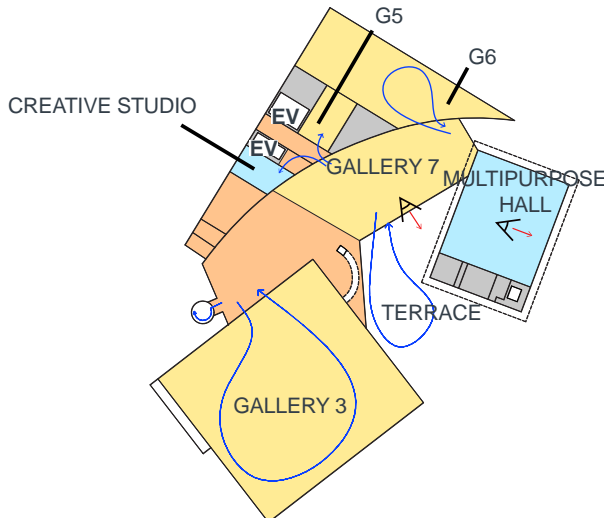
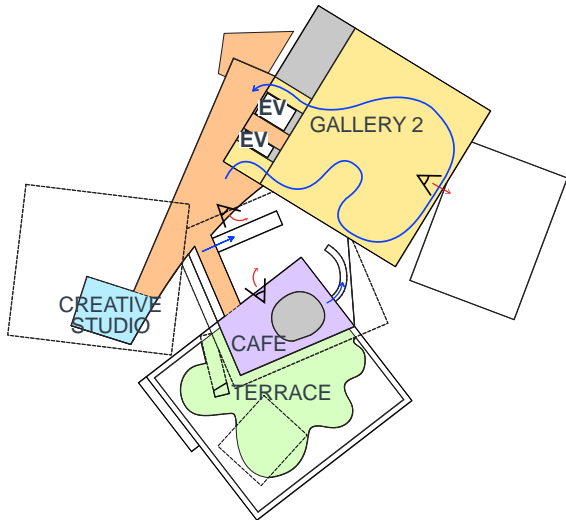
From the Entry Pavilion, visitors are led down the foyer via escalators or lift. They will be able to see out towards the landscape as they descend through this space.

The galleries are spread on all levels with the first gallery, the Aboriginal and Torres Strait Islander Gallery, connected to the Entry Pavilion.

Across the lift lobby are outdoor terraces, only accessible through the Gallery.

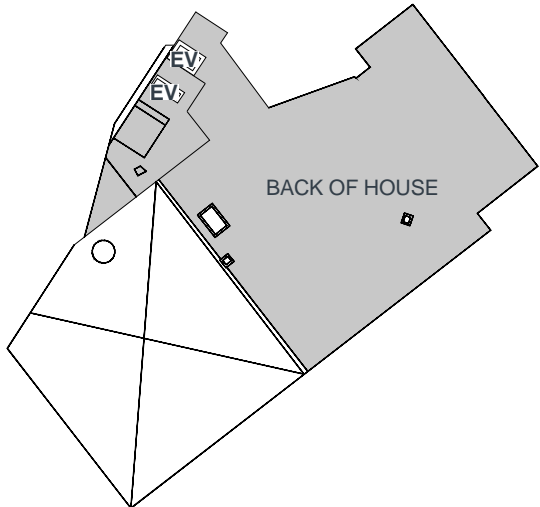
## Lower Level 1

On LL1 there is a spacious landing foyer where groups can gather before and after their visit to the Gallery on this level. Across this foyer is a cafe for 150 guests internally and 100 seats externally on a terrace. On the eastern end is a participation and learning space - a glass enclosed space that is visible from the public circulation path, both internally and externally.



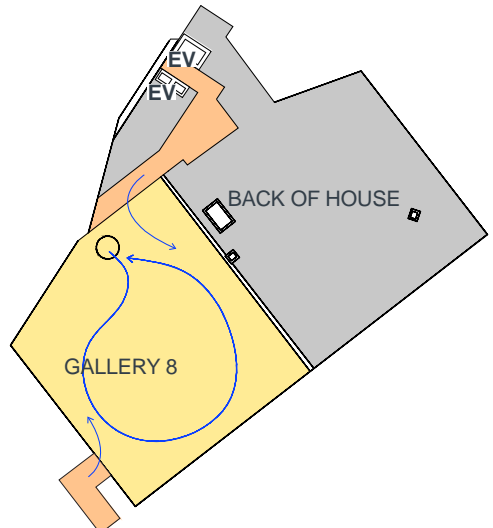
## Lower Level 2

Four galleries are located on this floor - a large temporary exhibition gallery (Gallery 3), two project galleries (Gallery 4 and 5), and an open gallery which is directly connected to the foyer (Gallery 7). From Gallery 7, visitors can step out to the garden which may exhibit sculpture. Behind the curved wall is another learning space, the Black Box which students can experiment with upcoming technology and art. At one end of the foyer is a multi-purpose hall. The multi-purpose hall is a glass enclosed space where a variety of creative programming can take place surrounded in landscape. For lecture type events, the space can be closed off with curtains to control the lighting. During the day, it will be open to allow for Gallery visitors to enjoy the space.



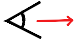

## Lower Level 3

Lower Level 3 is a dedicated Back of House level with loading docks and conservation.



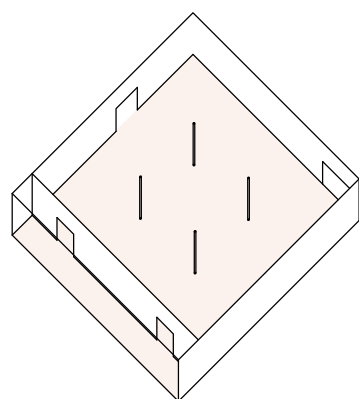
## Lower Level 4

The Fuel Bunker gallery is accessible via a spiral staircase on LL2. Minimal intervention is planned here to maintain the raw characteristic, making a very unique exhibition space.

Direction of View   
Circulation Path   
Public Lifts EV

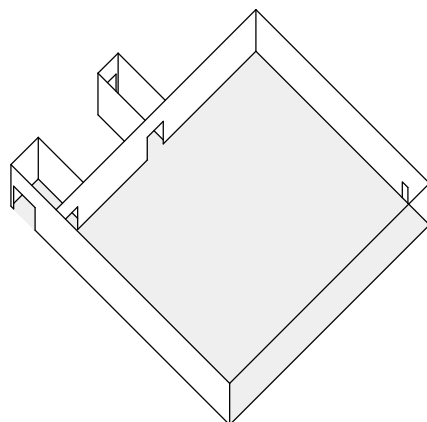


Current Scheme - Galleries



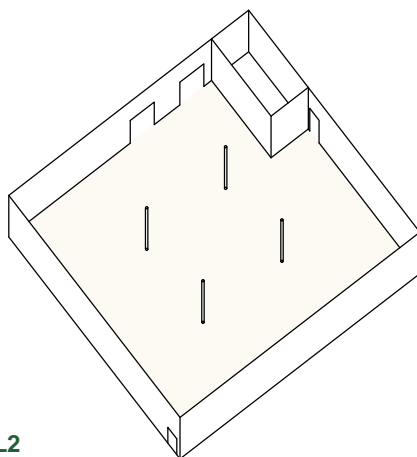
Gallery 1 - Entry Level

Gallery 1 is located on the Entry Level and is the first gallery along the visitor path. It will exhibit the Aboriginal and Torres Strait Islander art and is 33m x 30m and 5.5m ceiling height. This gallery is planned to accommodate temporary walls to provide maximum flexibility for various exhibitions. A smaller glazed gallery connected to the south is a space that can be used for art and learning, and affords views towards the existing building and new landscaping on the land bridge. An opening on the north wall provides views towards the harbour.



Gallery 2 - LL1

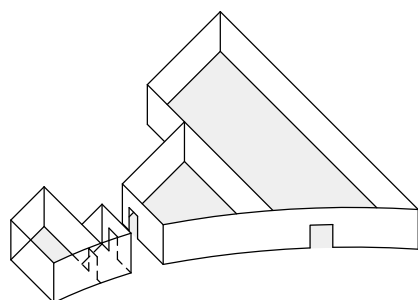
Gallery 2 is located one level below the Entry Level. This gallery is 33m x 36m with a ceiling height of 5.5m, and is column free. This gallery is also planned to accommodate temporary walls to provide maximum flexibility for various exhibitions. The eastern wall is glazed so the gallery can open towards Woolloomooloo Bay and Potts Point. When displaying sensitive art, the curators can build a temporary wall to control the amount of light.



Gallery 3 - LL2

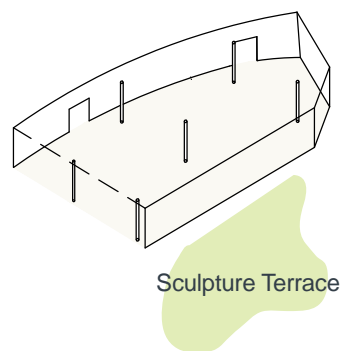
Gallery 3 is the largest of the new gallery spaces with about 1400m<sup>2</sup> (40m x 36m) of open space and a ceiling height of 5.5m. It will accommodate major temporary exhibitions.

This gallery space has a direct connection to the large art-lift and is accessible from the generous foyer, where pop up shops and information related to the exhibition program can be set up.



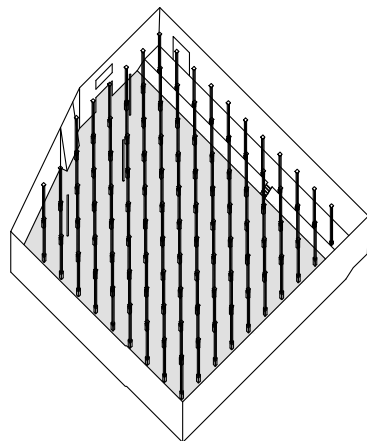
Gallery 4, 5 - LL2

Gallery 4 and 5 are project galleries that can be used as a single room or separately. These galleries are smaller in scale. All spaces are 5.2m in height.



Gallery 7 - LL2

Gallery 7 is an informal gallery space of 16m x 35m with a ceiling height of 5.2m, that is directly connected to the main foyer. This space is envisioned to be for the display of sculptures to maintain transparency towards the exterior courtyard and enhance the view into this space from the multipurpose space. The exhibitions can also extend into this courtyard.



Gallery 8 - LL4

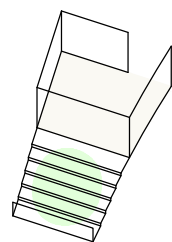
Gallery 8 is the re-purposed southern tank of the Fuel Bunker. The aim is to maintain the impressive proportions and raw characteristics of the space. The space is approximately 2000m<sup>2</sup> with 6.7m ceiling height. There will be minimal intervention in this space to keep the pre-existing characteristic of the space. The walls, ceiling, columns will be kept as is, while the floor will have a concrete finish to level the uneven floor.

The gallery is accessed via the main elevator core and a staircase from the LL2 level.



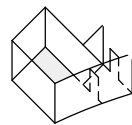
## Creative Studios and Other Spaces

---



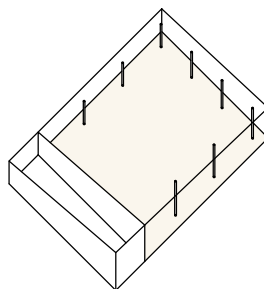
### Education - Creative Studio

At the South end of LL1 foyer is the main learning and participation space of 150m<sup>2</sup>. This glass enclosed space is visible from the external public path.



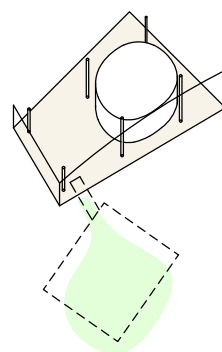
### Education - Black Box Studio (Gallery 6)

The 60m<sup>2</sup> Black-box studio is a space where students can learn and explore art work through digital technology.



### Multipurpose Hall

At the north end of the foyer and Gallery 7 is the multipurpose hall. The space is about 23m x 20m and is large enough to hold a banquet function for 300 people. The Gallery can hold a lecture event for 250 people or hold performances with 250 audience as well.



### Cafe

The Cafe on LL1 can seat 150 people internally and 100 people externally. The external seating is under the sunshading roof. The Cafe will have a kitchen on the same level.

### Public Amenities

There are three locations for public amenities - on LL1, LL2, and LL4. They are placed in close proximity to the major gallery spaces on each of these levels - for example, on LL1, the amenities are adjacent to Gallery 2 exit; on LL2, it is adjacent to Gallery 3; and on LL4, it is adjacent to Gallery 8.



## Gallery 1, 2, 3

### Gallery 1

Image and Plan of Gallery 1 below - the gallery has a view out of the harbour through an opening and a glass gallery on the south side to provide a view to the landscape.



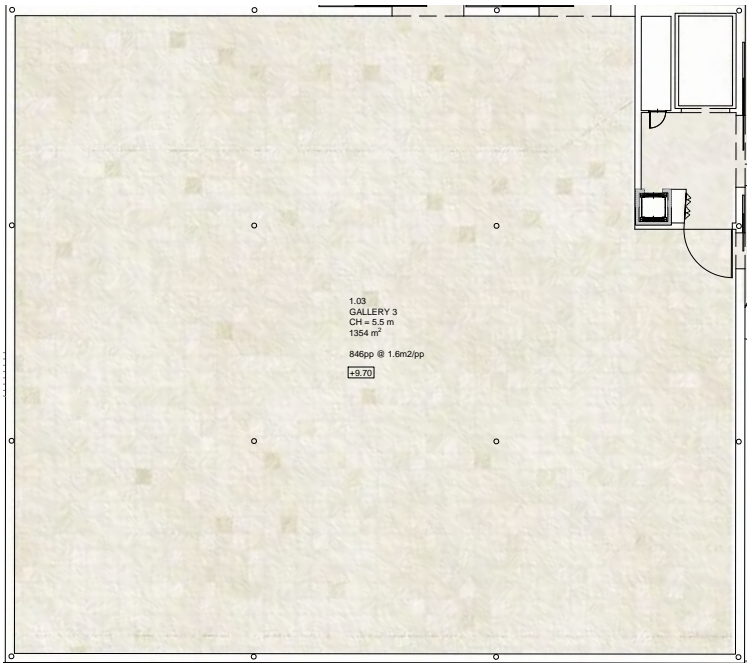
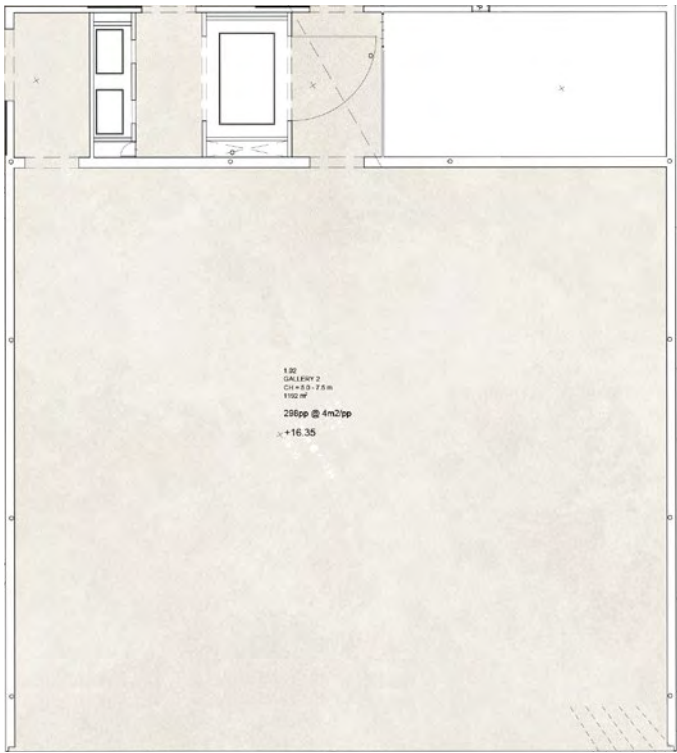
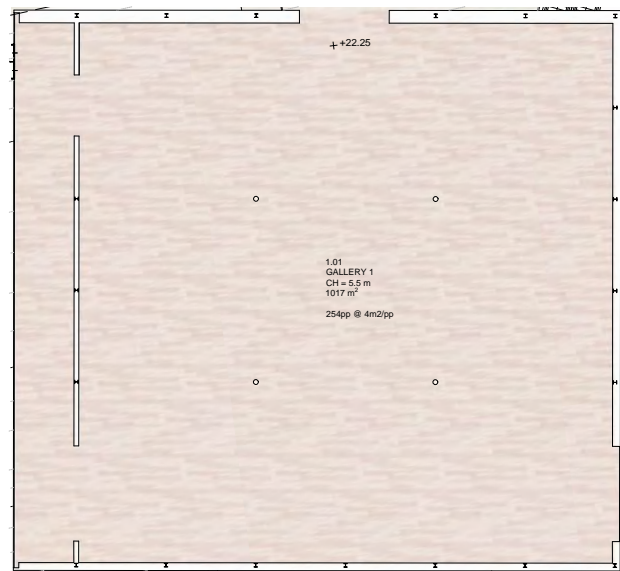
### Gallery 2

Image and Plan of Gallery 2 below - Gallery 2 is a column free space with a fully glazed side facing the harbor.



### Gallery 3

Image and Plan of Gallery 3 below - this is the temporary exhibition space - it can be used as a single large gallery space or divided into two smaller galleries.



Note: Gallery spaces will have artworks and internal partition walls





View into Gallery 7, LL1, and Entry Pavilion



## Fuel Bunker Gallery - Gallery 8

There are two fuel bunker compartments existing on site. The southern Fuel Bunker will be retained to be converted to a unique gallery space. With minimal intervention, the design team's goal is to preserve the existing characteristic of the space.

A few of the columns will be replaced for strength to support the building above but the remainder of the columns will be retained. A new slab will be poured on the floor to provide drainage in case of water ingress and to level the uneven ground. Electrical services will run through this floor slab.

Fire safety equipment and mechanical system will be placed in the higher level of the space.

Lighting and acoustics will be treated as temporary elements to suit the exhibition or events to be held in the space.

Credit:

Reference Gallery Space 1

Dia Beacon, NY, USA

<https://news.artnet.com/exhibitions/dan-flavin-dia-beacon-installation-493598>

Reference Gallery Space 2

Tate Modern, London, UK

sung hwan kim the tanks commission, 2012 installation view c  
sung hwan kim photocredit - tate photography

Reference Gallery Space 3

Buffalo Bayou Park, Houston, USA

<http://www.dailymail.co.uk/wires/ap/article-4065086/Houston-reservoir-reborn-public-space-canvas-art.html>



Existing Fuel BUnker



Reference Gallery Space 1 - Dia Beacon



Reference Gallery Space 2 - Tate Modern



Reference Gallery Space 3 - Buffalo Bayou Park



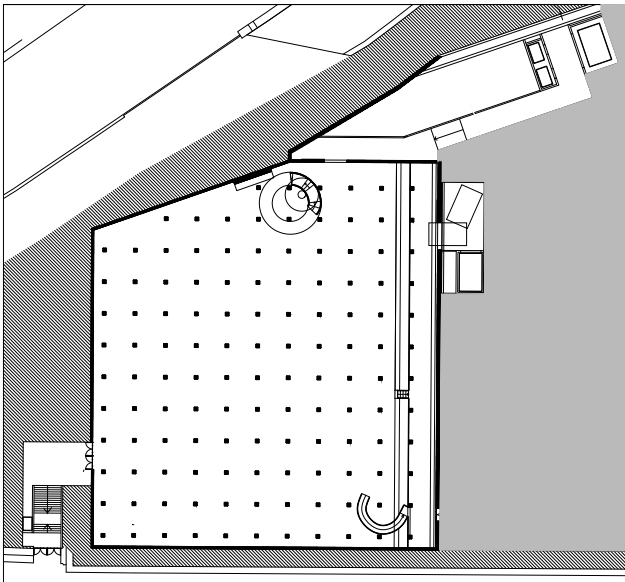
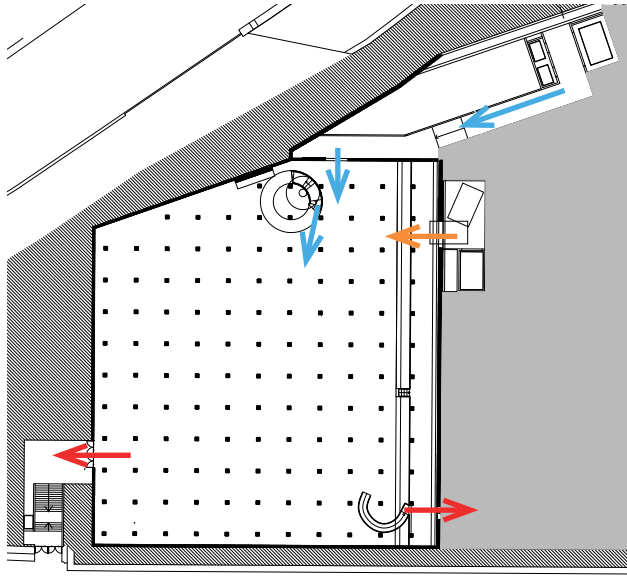
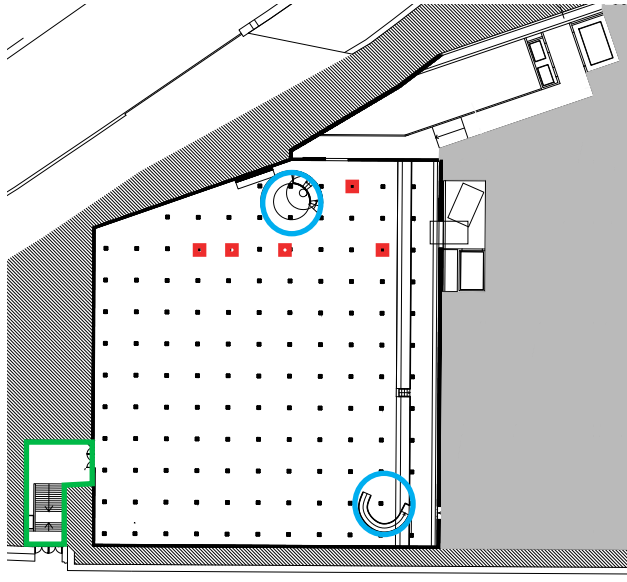


Diagram 1 - Current Plan



- ← Visitor Access
- ← Art Access
- ← Fire Exit

Diagram 2 - Access and Fire Exit



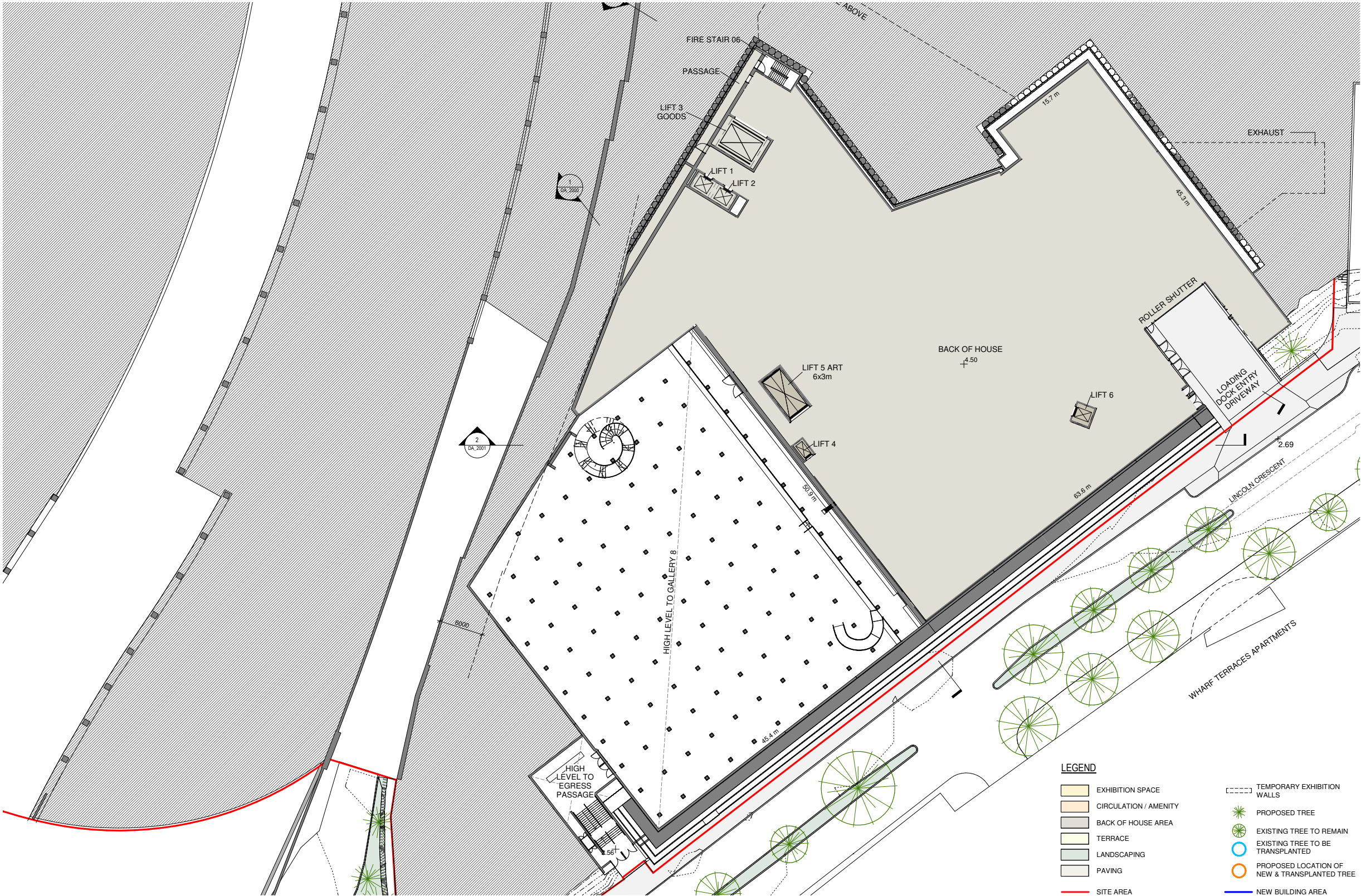
- Structure for Access
- Excavation for Access
- Estimated location of Reinforced Structure

Diagram 3 - Structural Intervention

Proposed Scheme - Back of House

The north Fuel Bunker will be retrofitted to accommodate the new administrative and service programs.

One service access into this area from Lincoln Crescent is proposed.







## Proposed Scheme - Exterior Finish

There are 4 main materials and finishes:  
Concrete, Stone, and Glass.

### Roofs

The roof is made of textured cement mixture of earth color. It is medium sandy tone to mitigate reflection and heat.

Accessible roofs and visible roofs have landscape on them to bring the scale of the building down and to bring visitors closer to the landscape.

The Entry Plaza canopy is made of glass formed into tight waves in a random rhythm. The canopy provides shade and protection from rain.

In addition to the main roofs, there are two smaller roofs located on two of the accessible roofs which provide shade for visitors.

### Exterior Walls

All exterior walls are made of either glass or concrete. All gallery volumes are clad in stone panels which softly reflect the surrounding landscape and colours.

All foyer and informal gallery spaces are enclosed in clear glass.

Rammed earth walls on the west of LL1 and LL2 foyer continues to the exterior.



Sydney Modern Project Physical Model

Wall - Material E

Roof - Material A

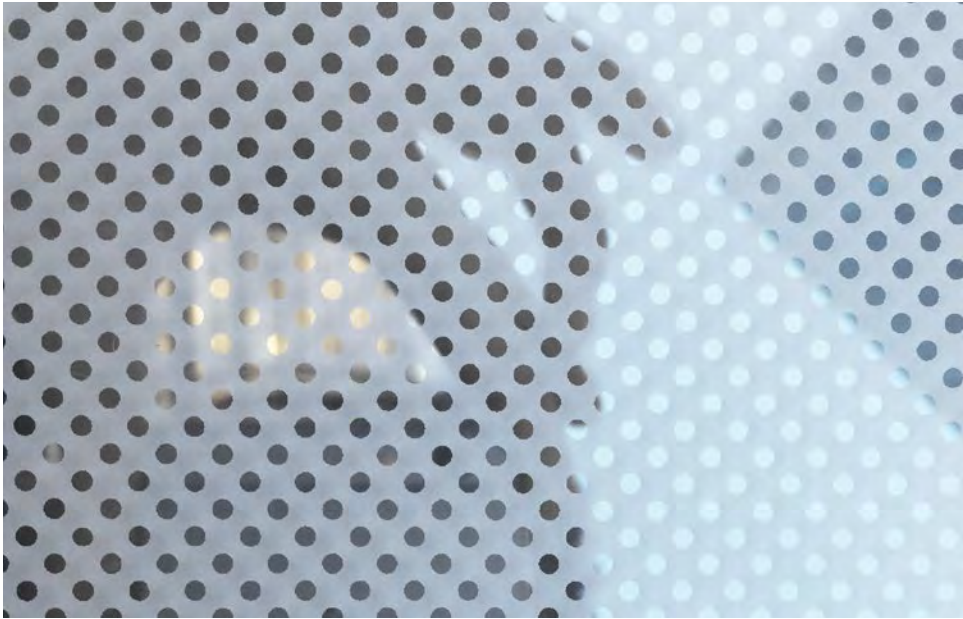
Roof - Material B

Material F

Facade - Material C

Facade - Material D

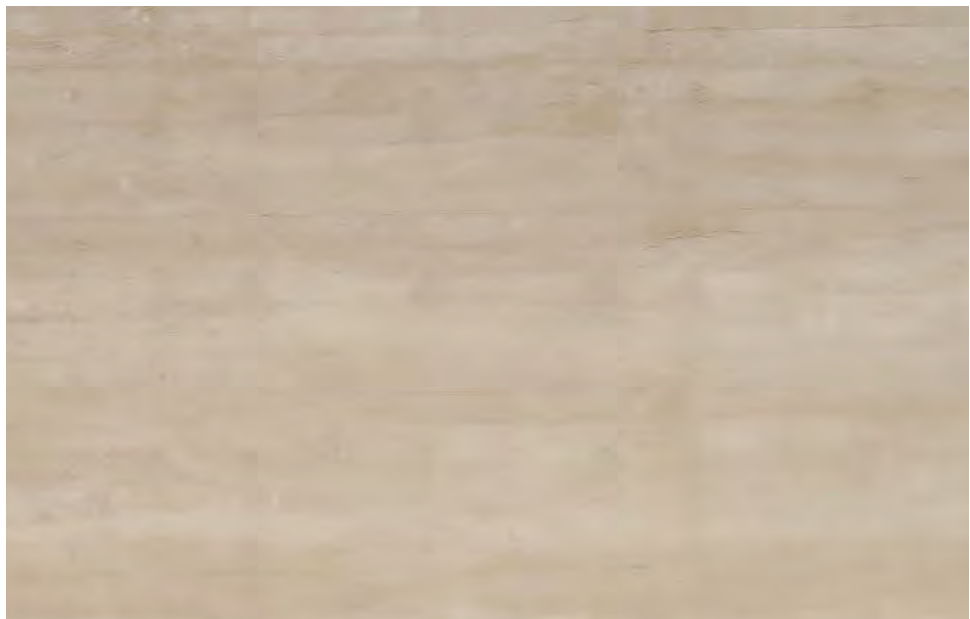




Reference Material A - Roof - Curved Glass



Reference Material B - Roof - Earth Color Aggregate Concrete



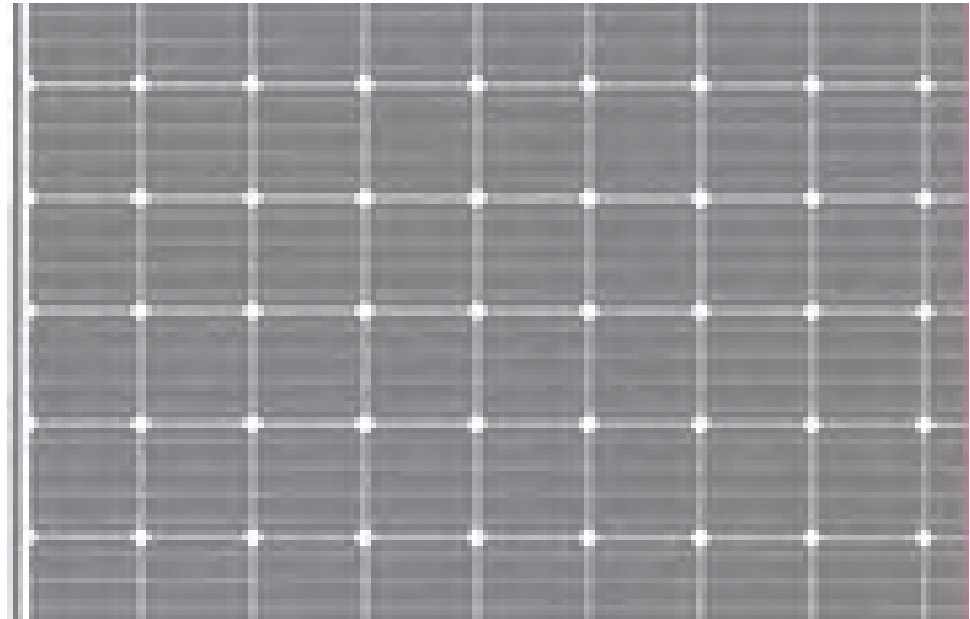
Material E - Wall - Rammed Earth Wall



Material C - Solid Facade - Limestone



Material D - Transparent Facade - Glass



Material F - PV

