

It's all about connection;

connection to landscape, to place, to community (physically + spiritually)

our proposal opens + invites these connections

through a rich + layered public domain stretching from the waters
edge to the built form, the parklands + the community beyond
(built form strengthening rather than denying these connections)

in so doing, places are created

iconic, memorable, accessible, vibrant, sustainable, communal

the 'green blanket' cloaks the point and in so doing creates a
gateway

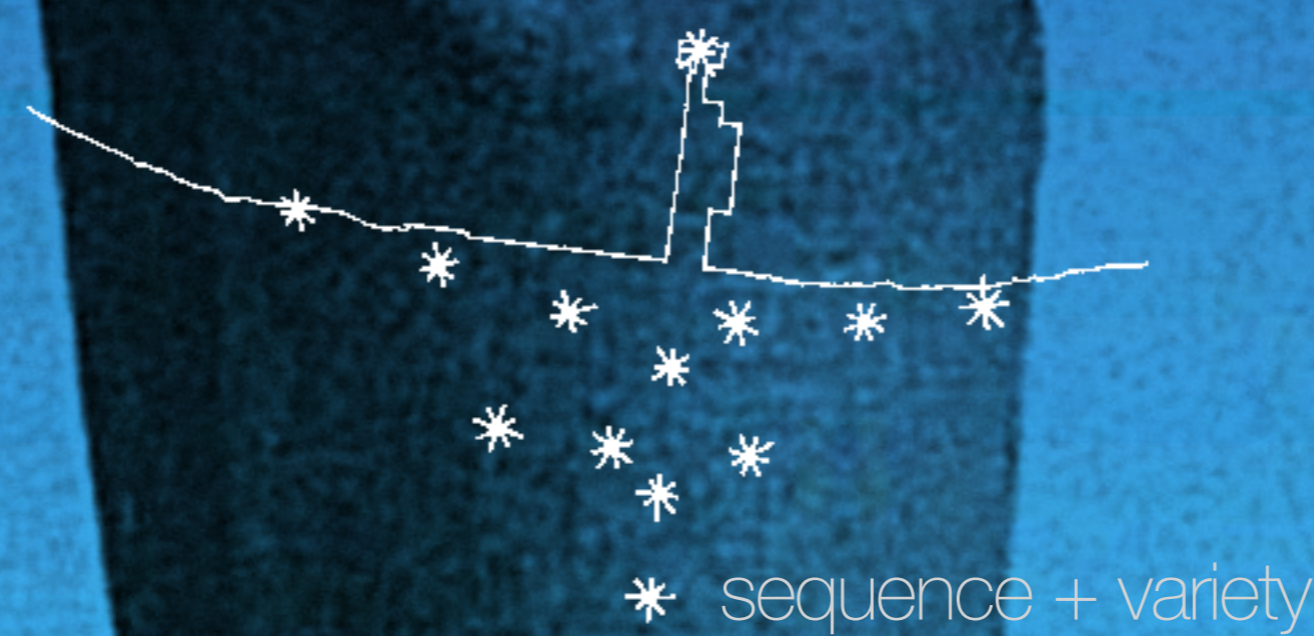
to a place already iconic:

naturally, physically, historically

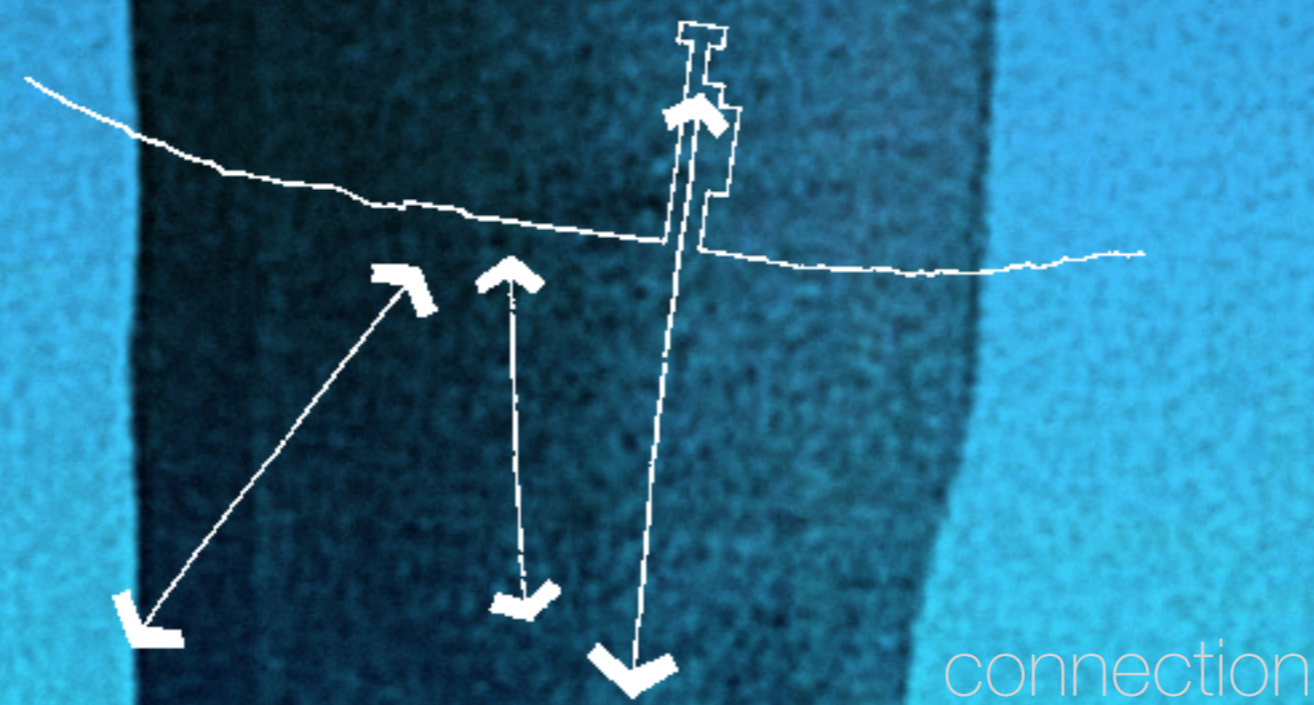
like the wings of a butterfly I fly away.....



continuity



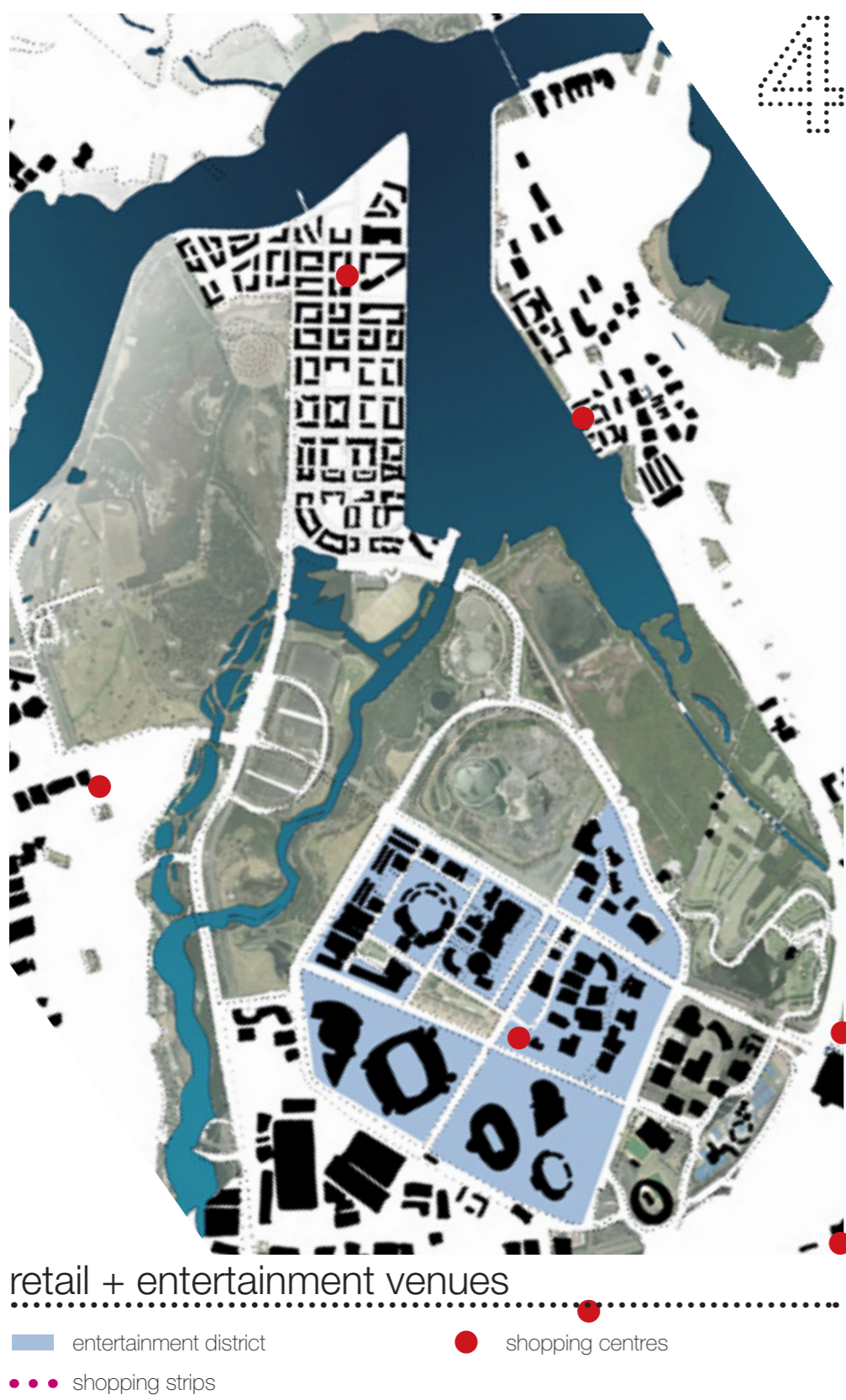
* sequence + variety



connection

VISION

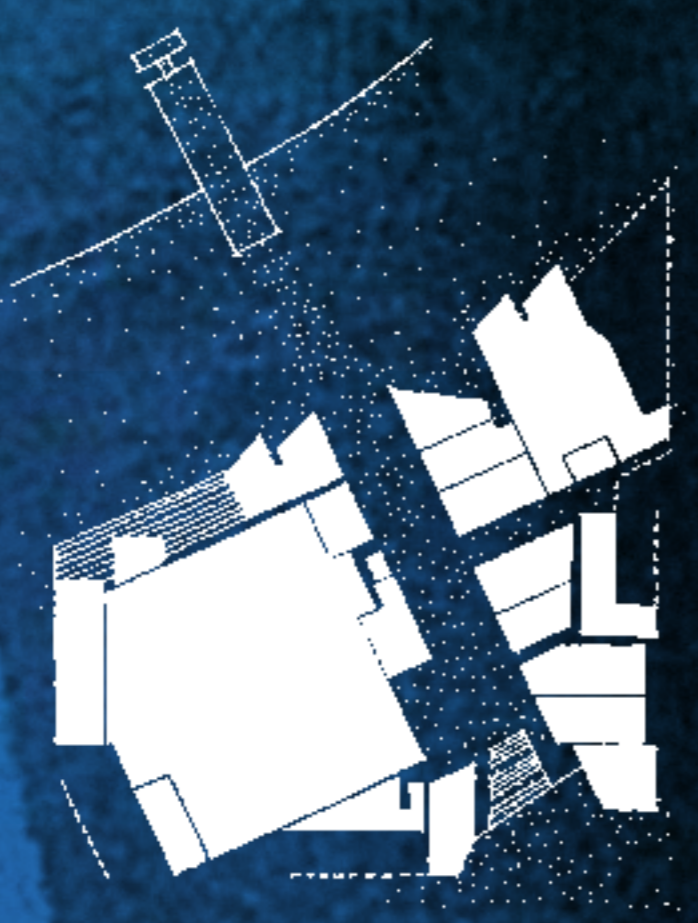
WENTWORTH POINT



open to water

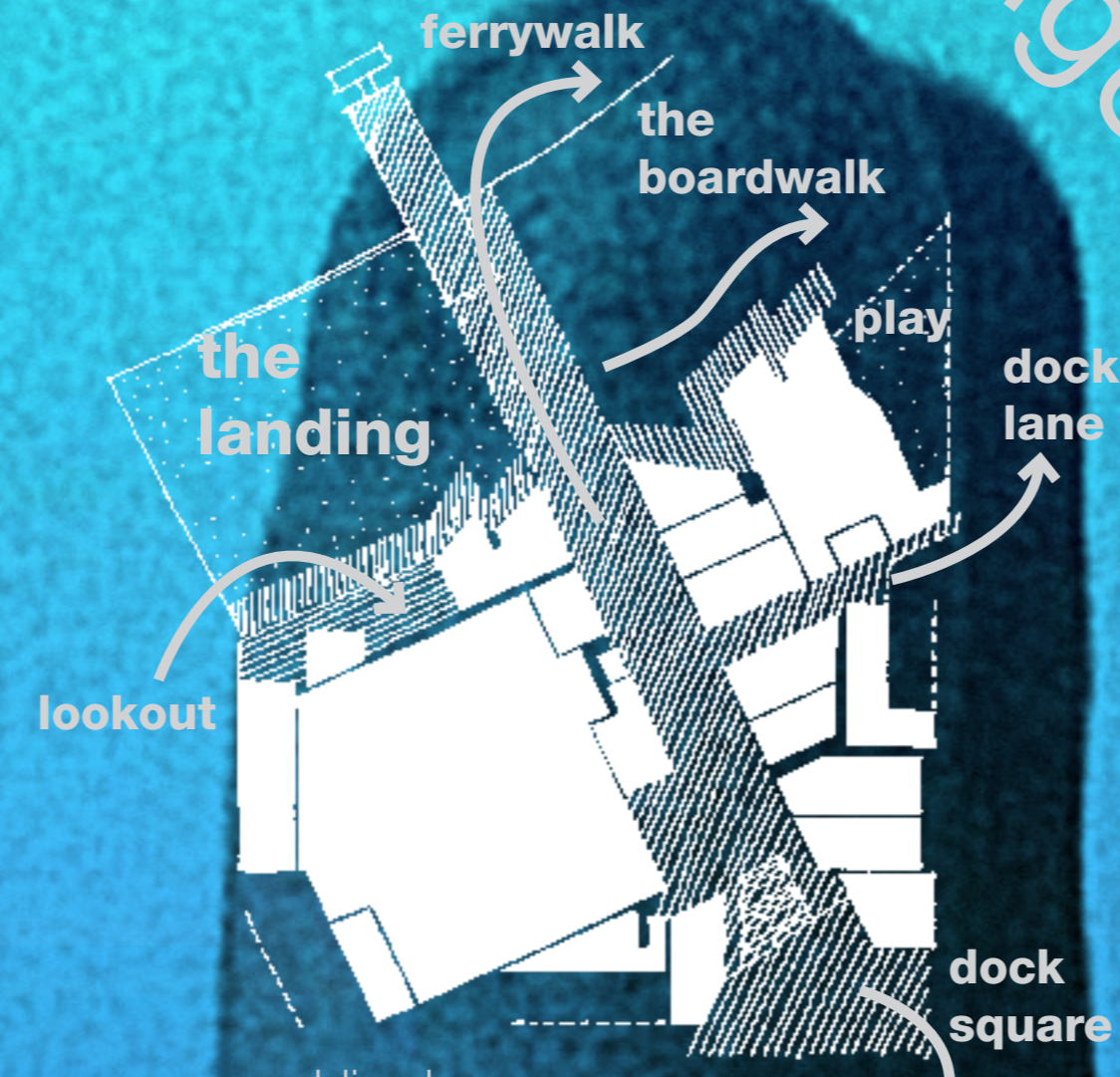


all public domain
seamless + extended public domain; water; land; built form; parklands

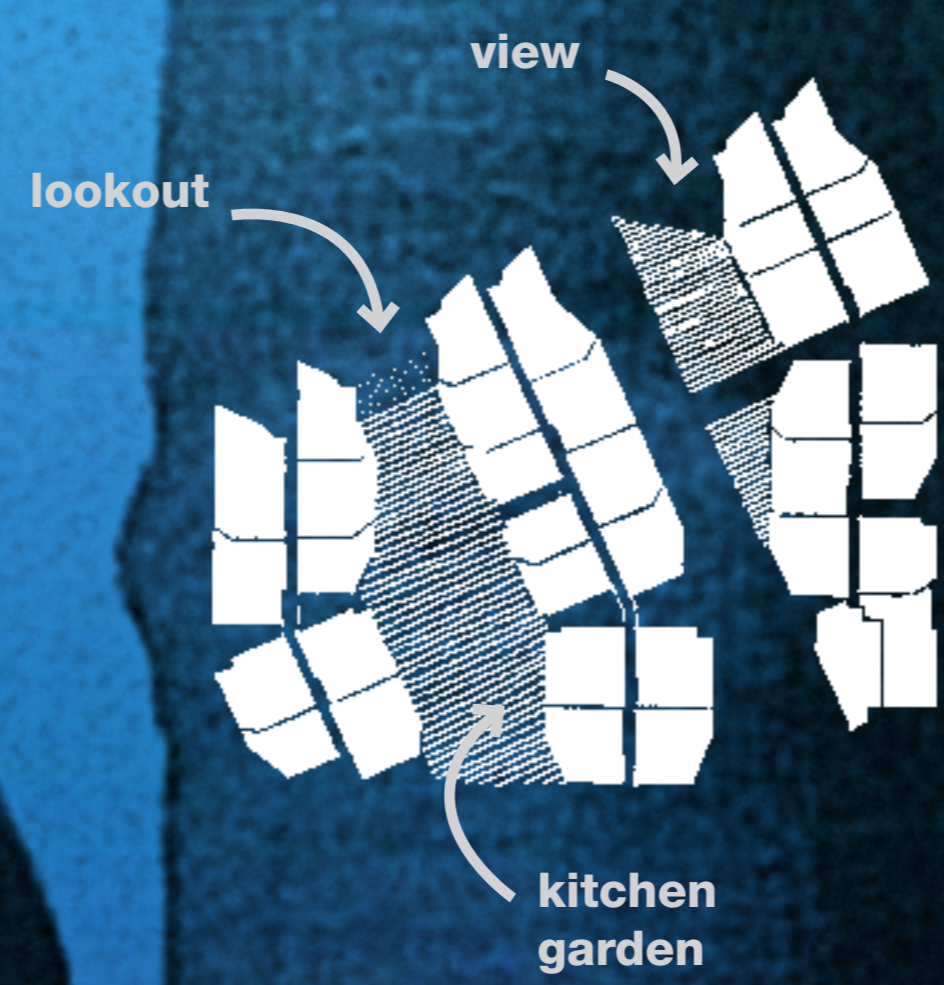


activity
seamless + extended active edges

green fingers



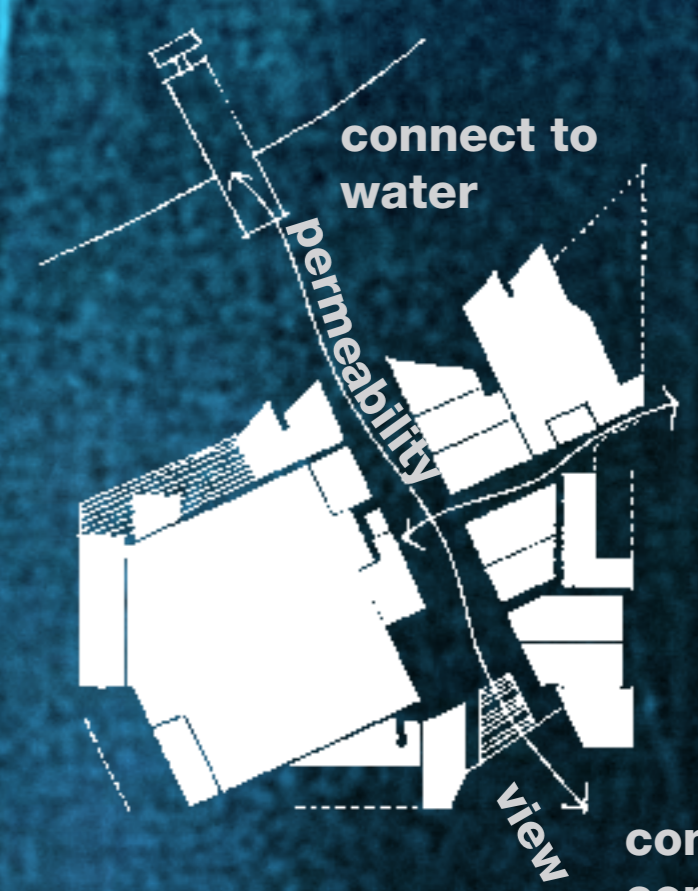
public places + spaces
multiple special destinations + experiences
unify the waters edge to built form, parklands + community



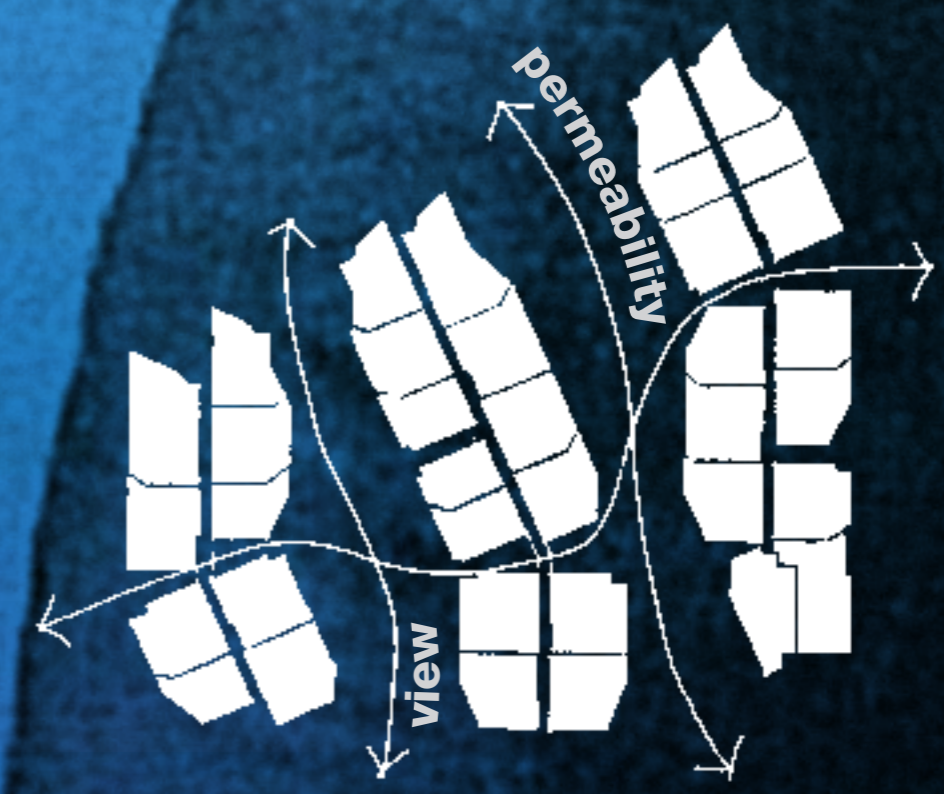
kitchen garden

extend, invite + connect water to land

embrace view for all



connected
multiple permeability - visually + physically



the built form
embraces + invites 'green' (parklands) + 'blue' (waterways) into + through the built form connecting to the community

connect to community

embrace view

open to water

biodiversity



- increase natural flora and fauna

energy efficiency



- solar thermal arrays
- energy efficient fittings

halve carbon footprint



- recycled materials

place making



- community enhancement

enable community



- monitoring energy use
- participation in communal gardens



- water reuse



water smart

- carsharing
- bike parking



SOPA transport

- waste separation in apartments
- onsite composting for edible gardens



close waste loop

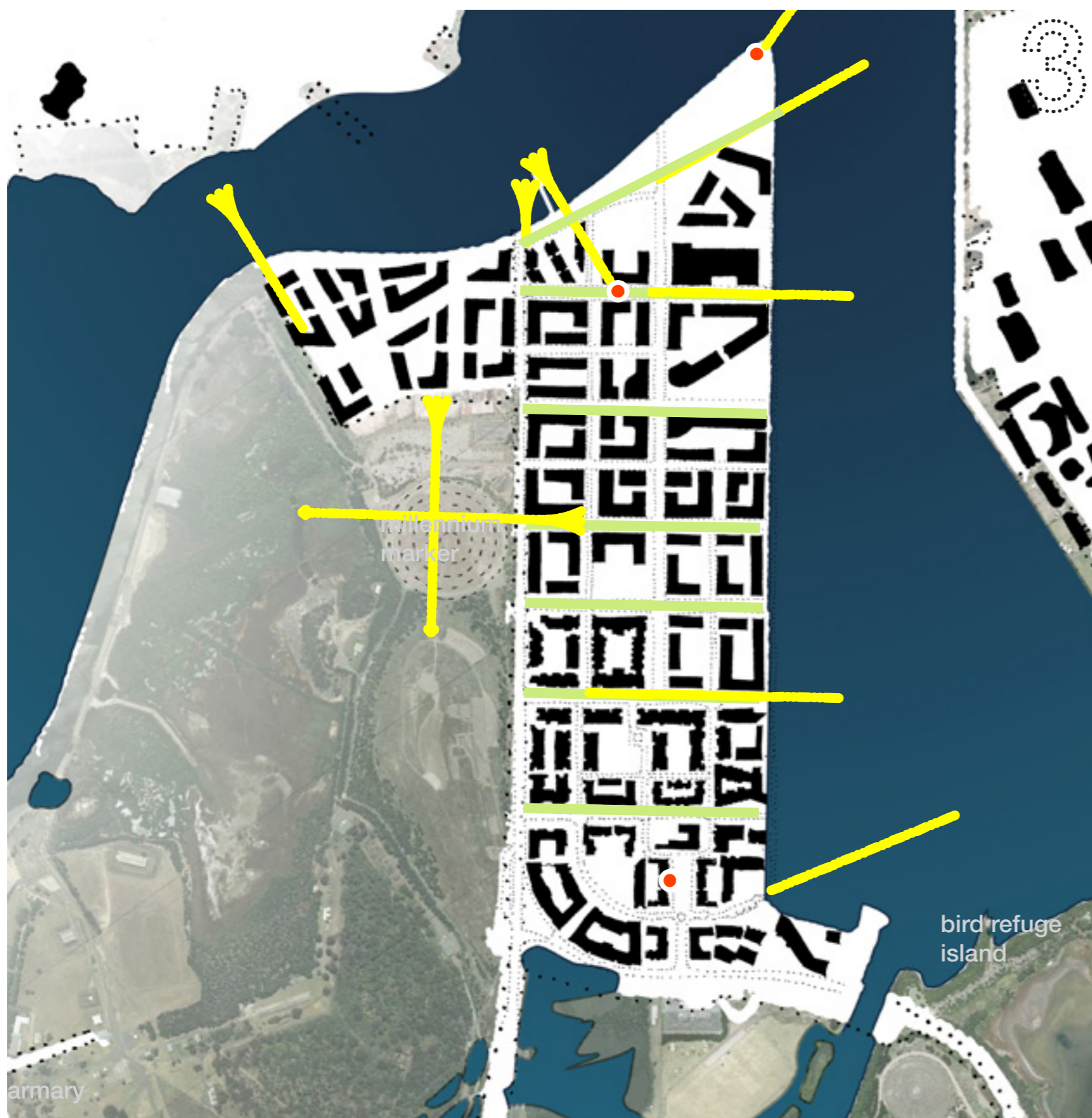
sustainability principles



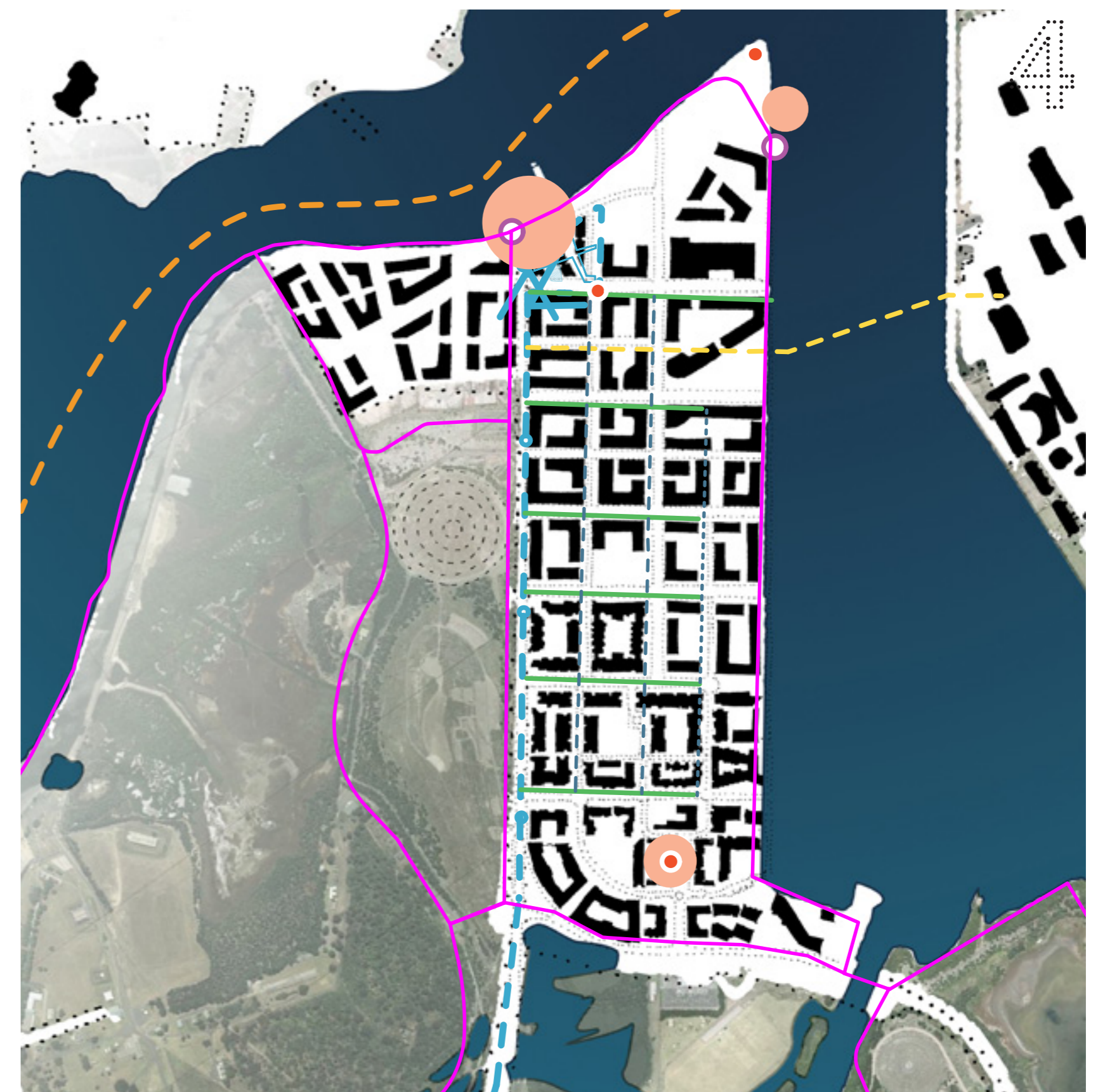
transport + bike network



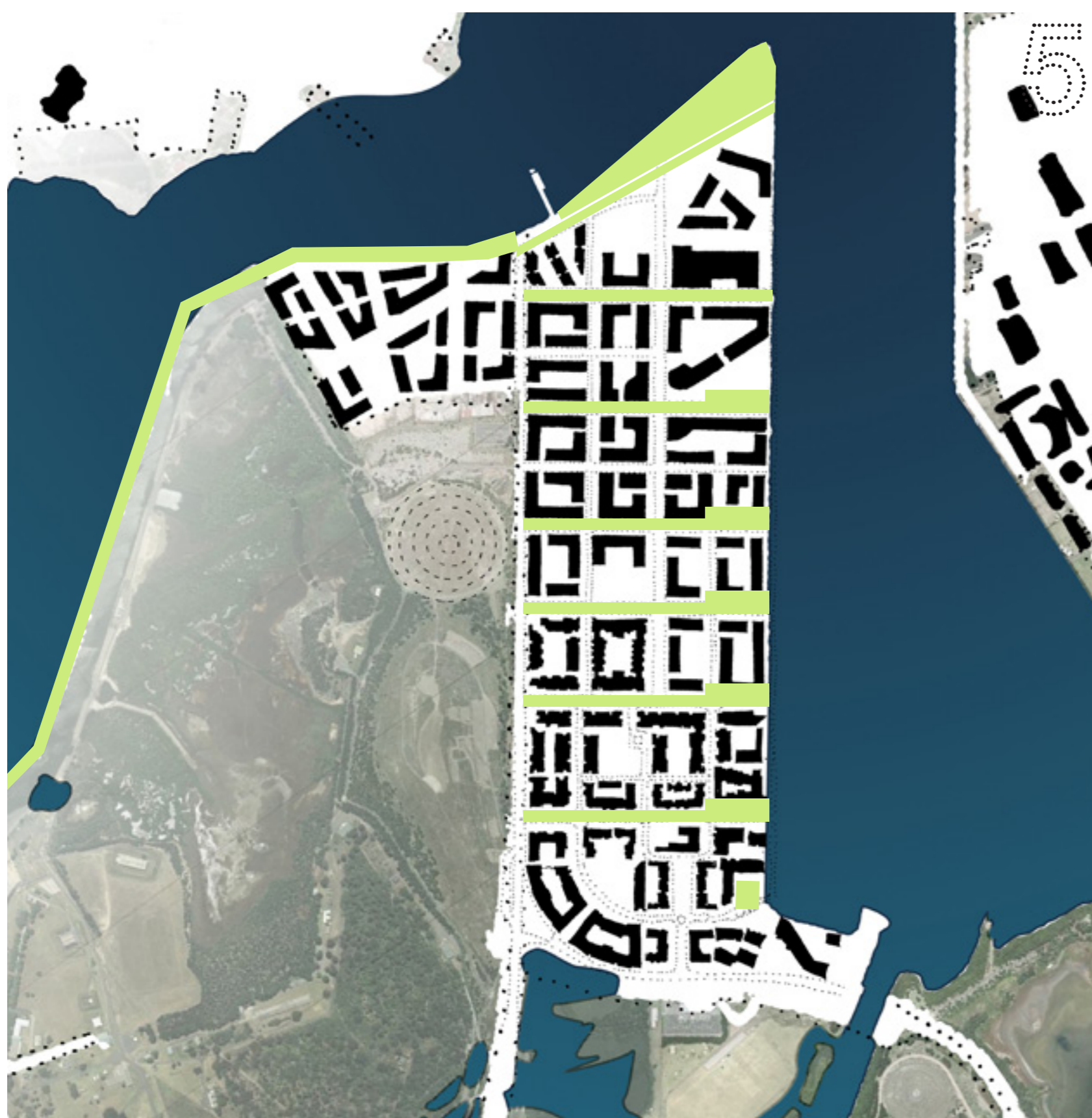
vegetation



view corridors + green connector streets



street hierarchy + public activation



water front treatment

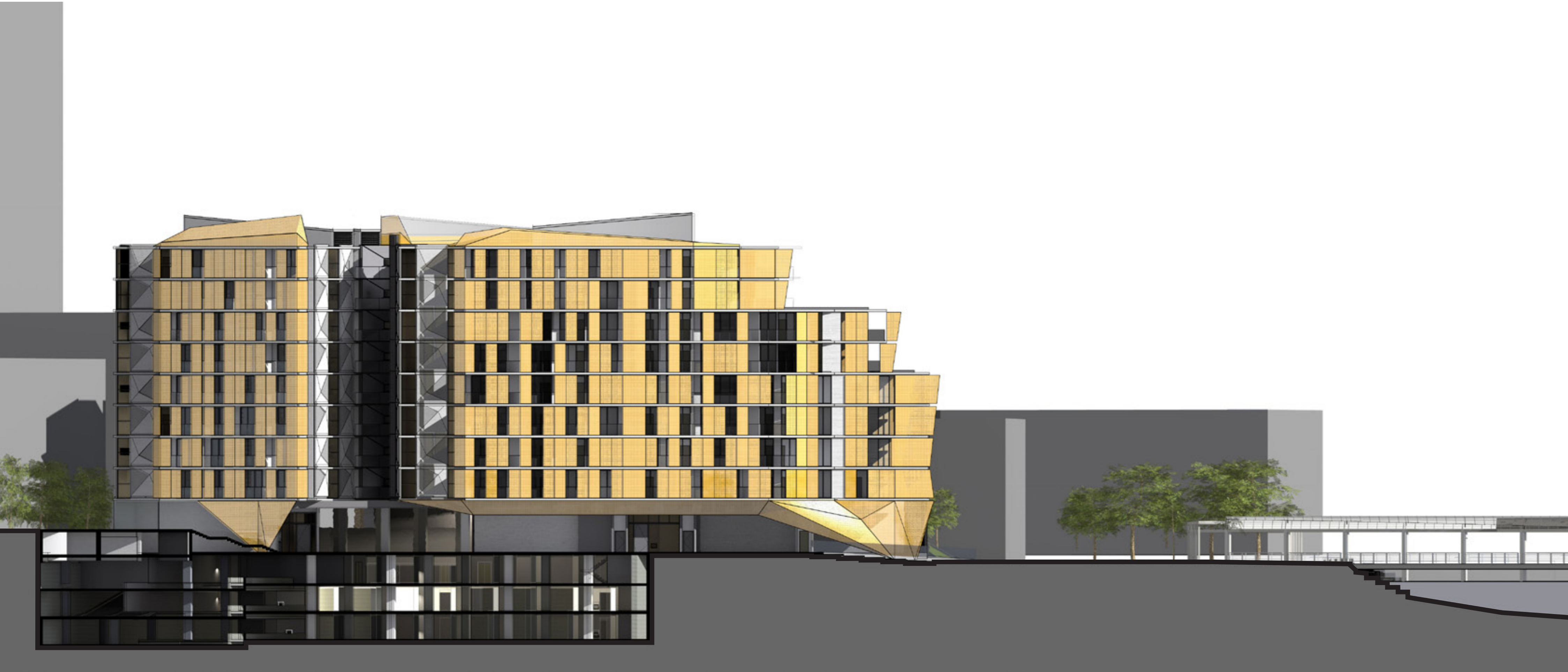
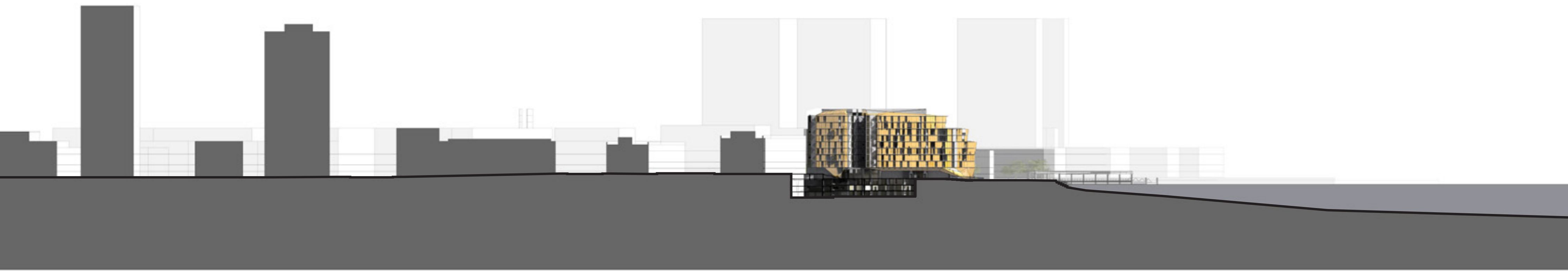


pedestrian movement + public domain

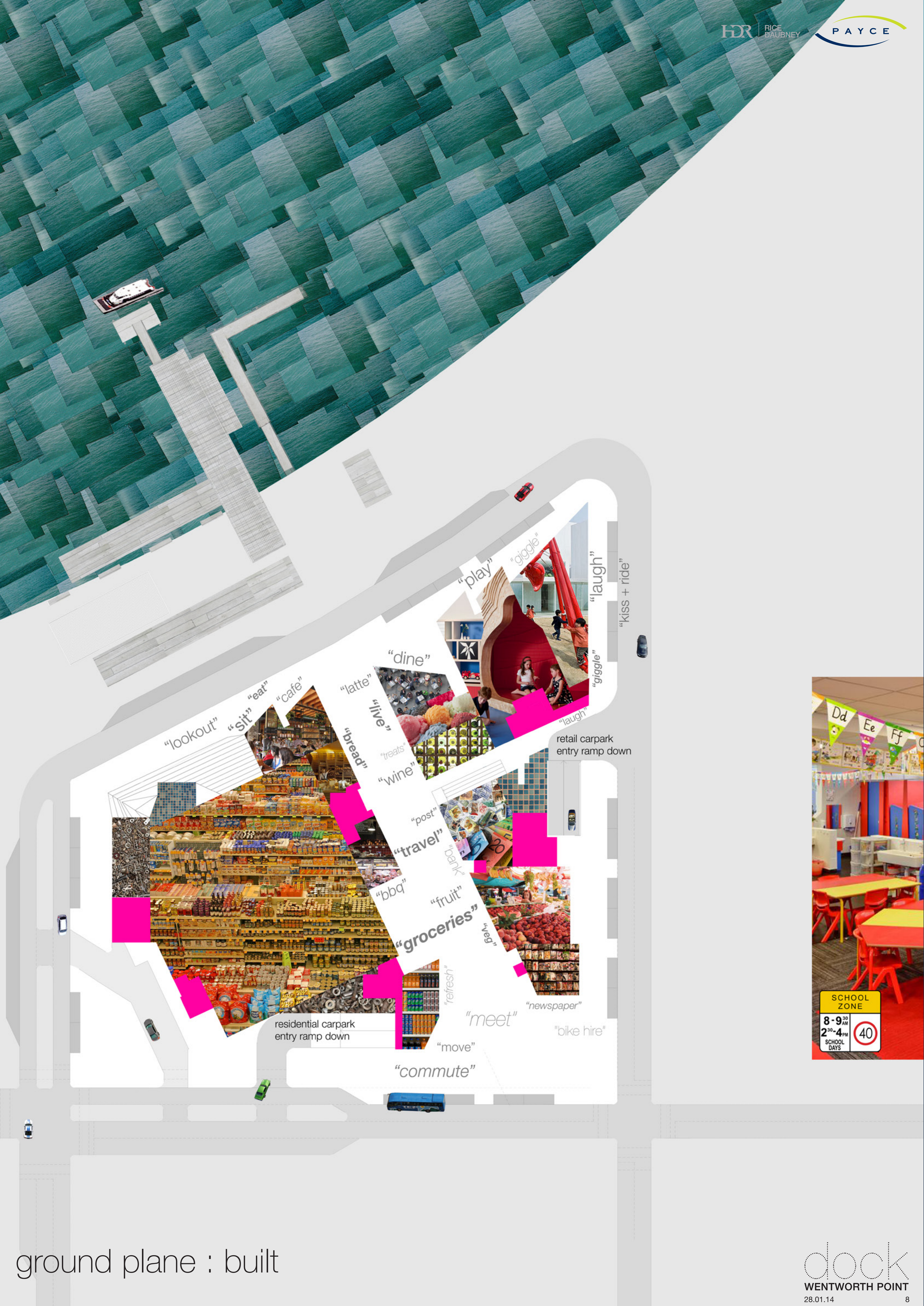
- bike route
- major bike node
- bus route + stop
- ferry route
- future arterial road + bridge
- main east west street
- local street
- minor local street
- pedestrian through site link
- community hub
- existing / potential public art
- open park (soft water edge)
- hardscape water front
- predominantly native vegetation
- predominantly exotic vegetation
- view corridor
- public domain

MCGREGOR COXALL
LANDSCAPE ARCHITECTURE
URBAN DESIGN





wharf section



“lookout” “sit” “eat” “cafe” “latte” “live” “bread” “treats” “wine” “post” “travel” “bank” “bbq” “fruit” “groceries” “veg” “refresh” “meet” “newspaper” “bike hire” “move” “commute”

“play” “giggle” “laugh” “kiss + ride” “giggle” “laugh”

“dine” “treats” “wine” “post” “travel” “bank” “bbq” “fruit” “groceries” “veg” “refresh” “meet” “newspaper” “bike hire” “move” “commute”

residential carpark entry ramp down

retail carpark entry ramp down



SCHOOL ZONE

8-9³⁰ AM
2³⁰-4 PM
SCHOOL DAYS

40