

BURROWAY ROAD



**NSW GOVERNMENT**  
Planning

Issued under the Environmental Planning and Assessment Act 1979

Approved Section 96 (1A) (1) (2) Modification Application  
No. 2 granted on the 23 July 2015  
in respect to MP SSD 6387.

Signed: *[Signature]*

Sheet No. 18 of 43

NORTH POINT

Stanic architects is the owner of the copyright subsisting in these drawings, plans, designs and specifications. They must not be used, reproduced or copied, in whole or in part, nor may the information, ideas and concepts therein be disclosed to any person without the prior written consent of that company.

REV	DESCRIPTION OF CHANGE	DATE
H	DA REVISION	08.08.14
I	DA REVISION	28.10.14
J	S&E ISSUE	01.06.15

**LEGEND**

AWN 1	ALUMINIUM SCOFFIT AWNING SILVER
AWN 2	SUN SHADING DEVICE TO CHILDO CARE CENTRE
BAL 1	OPAQUE WHITE GLASS BALUSTRADE
BAL 2	CLEAR GLASS BALUSTRADE
BAL 4	CHILDPROOF FRAMELESS GLASS BALUSTRADE TO CHILDO CARE CENTRE
P 1	PAINT FINISH - DULUX P14B1Q 'GREY PEBBLE' QUARTER STR
PC 1	GROOVED PRECAST CONCRETE PANEL PAINT FINISH
PC 3	CONCRETE PAINT FINISH TO MATCH WF1
SC 1	PERFORATED ANODISED ALUMINIUM VERTICAL LOUVRE SCREEN, ANODISED ALUMINIUM UNIVERSAL ANODISED ORIENTAL GOLD PERFORATED VERTICAL LOUVRE SCREEN
SC 2	ANODISED ALUMINIUM FINISH
SC 3	CHILDO CARE CENTRE PERIMETER SCREEN
SC 4	ROOF PLANT SCREEN
WF1	WINDOW FRAMES - INTERPON D2015 ULTRIVA ASTEROID PEARL MATT YV270A

**LEGEND**

[Blue outline]	1 BEDROOM APARTMENT
[Light blue outline]	2 BEDROOM APARTMENT
[Dark blue outline]	3 BEDROOM APARTMENT
[Red outline]	BALCONY
[Grey outline]	CORRIDOR
[A]	AFFORDABLE HOUSING
[Wheelchair icon]	ACCESSIBLE APARTMENT
[T]	TANDEM CAR SPACE
[M]	METER CUPBOARD
[FX]	FIRE EXTINGUISHER
[GAX]	GREASE ARRESTOR EXHAUST RISER
[GC]	GARBAGE CHUTE
[CF]	CONDENSER FARM

PROJECT MANAGER  
**IONIC MANAGEMENT PTY. LTD**



LEVEL 37, CHIFLEY TOWER 2 CHIFLEY SQUARE SYDNEY 2000 P: 02 8913 0240 0794@ionic.net.au

CLIENT  
**PAYCE CONSOLIDATED LTD**



LEVEL 37, CHIFLEY TOWER 2 CHIFLEY SQUARE SYDNEY 2000 P: 02 9090 2200 F: 02 9090 2299 reception@payce.com.au

ARCHITECTS  
**stanisic architects**

Level 2, 243 Liverpool Street East Sydney NSW 2010 T: (61 2) 9259 2598 F: info@stanisic.com.au ABRN 1100263441

**HDR | RICE DAUBNEY**

PROJECT  
**SOPA "DOCK" 1 BURROWAY RD**  
WENTWORTH POINT, THE WHARF SITE SYDNEY OLYMPIC PARK

DRAWING TITLE  
**LEVEL 8 RL 27.32**

SCALE (ORIGINAL SIZE A1) 1 : 200	CHECKED JN
PROJECT NUMBER 14 003	DRAWING NUMBER DA 1307
	ISSUE J



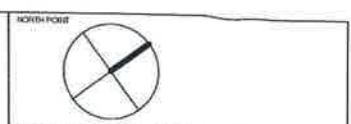
**NSW GOVERNMENT Planning**

Issued under the Environmental Planning and Assessment Act 1979

Approved Section 96 (1A) (1) (2) Modification Application No. 2 granted on the 23 July 2015 in respect to MP S.S.D.6387

Signed [Signature]

BUILDING Sheet No. 19 of 43



stansic architects is the owner of the copyright subsisting in these drawings, plans, designs and specifications. They must not be used, reproduced or copied, in whole or in part, nor confidential to stansic architects) be disclosed to any person without the prior written consent of that company.

REV	DESCRIPTION OF CHANGE	DATE
H	DA REVISION	05.09.14
I	DA REVISION	28.10.14
J	S96 ISSUE	01.05.15

**LEGEND**

AWN 1	ALUMINIUM SOFFIT AWNING SILVER
AWN 2	SUN SHADING DEVICE TO CHILD CARE CENTRE
BAL 1	OPAQUE WHITE GLASS BALUSTRADE
BAL 2	CLEAR GLASS BALUSTRADE
BAL 4	CHILDPROOF FRAMELESS GLASS BALUSTRADE TO CHILD CARE CENTRE
P 1	PAINT FINISH - DULUX P1481Q 'GREY PEBBLE' QUARTER STB
PC 1	GROOVED PRECAST CONCRETE PANEL. PAINT FINISH
PC 3	CONCRETE. PAINT FINISH TO MATCH WF1
SC 1	PERFORATED ANODISED ALUMINIUM VERTICAL LOUVERED SCREEN. ANODISED ALUMINIUM UNIVERSAL ANODISERS 'ORIENTAL GOLD'
SC 2	PERFORATED VERTICAL LOUVERED SCREEN. ANODISED ALUMINIUM FINISH
SC 3	CHILD CARE CENTRE PERIMETER SCREEN
SC 4	ROOF PLANT SCREEN
WF 1	WINDOW FRAMES - INTERPON D2015 ULTRIVA ASTEROID PEARL, MATT Y2720A

**LEGEND**

[Blue box]	1 BEDROOM APARTMENT
[Light blue box]	2 BEDROOM APARTMENT
[Dark blue box]	3 BEDROOM APARTMENT
[White box]	BALCONY
[Red line]	CORRIDOR
[A]	AFFORDABLE HOUSING
[Wheelchair icon]	ACCESSIBLE APARTMENT
[T]	TANDEM CAR SPACE
[M]	METER CUPBOARD
[FX]	FIRE EXTINGUISHER
[GAX]	GREASE ARRESTOR EXHAUST RISER
[GC]	GARIBAGE CHUTE
[CF]	CONDENSER FARM

PROJECT MANAGER  
**IONIC MANAGEMENT PTY. LTD**

LEVEL 37, CHIFLEY TOWER 2 CHIFLEY SQUARE SYDNEY 2000 P: 61 2 9243 0243 cym@ionic.net.au

CLIENT  
**PAYCE CONSOLIDATED LTD**

LEVEL 37, CHIFLEY TOWER 2 CHIFLEY SQUARE SYDNEY 2000 P: 61 2 9243 0243 ncorson@payce.com.au

ARCHITECTS  
**stansic architects**  
Level 2, 243 Liverpool Street East Sydney NSW 2010  
T: 61 2 9358 2588  
E: info@stansic.com.au  
ABN 11002653481

**HDR | RICE DAUBNEY**

PROJECT  
**SOPA "DOCK" 1 BURROWAY RD**  
WENTWORTH POINT, THE WHARF SITE SYDNEY OLYMPIC PARK

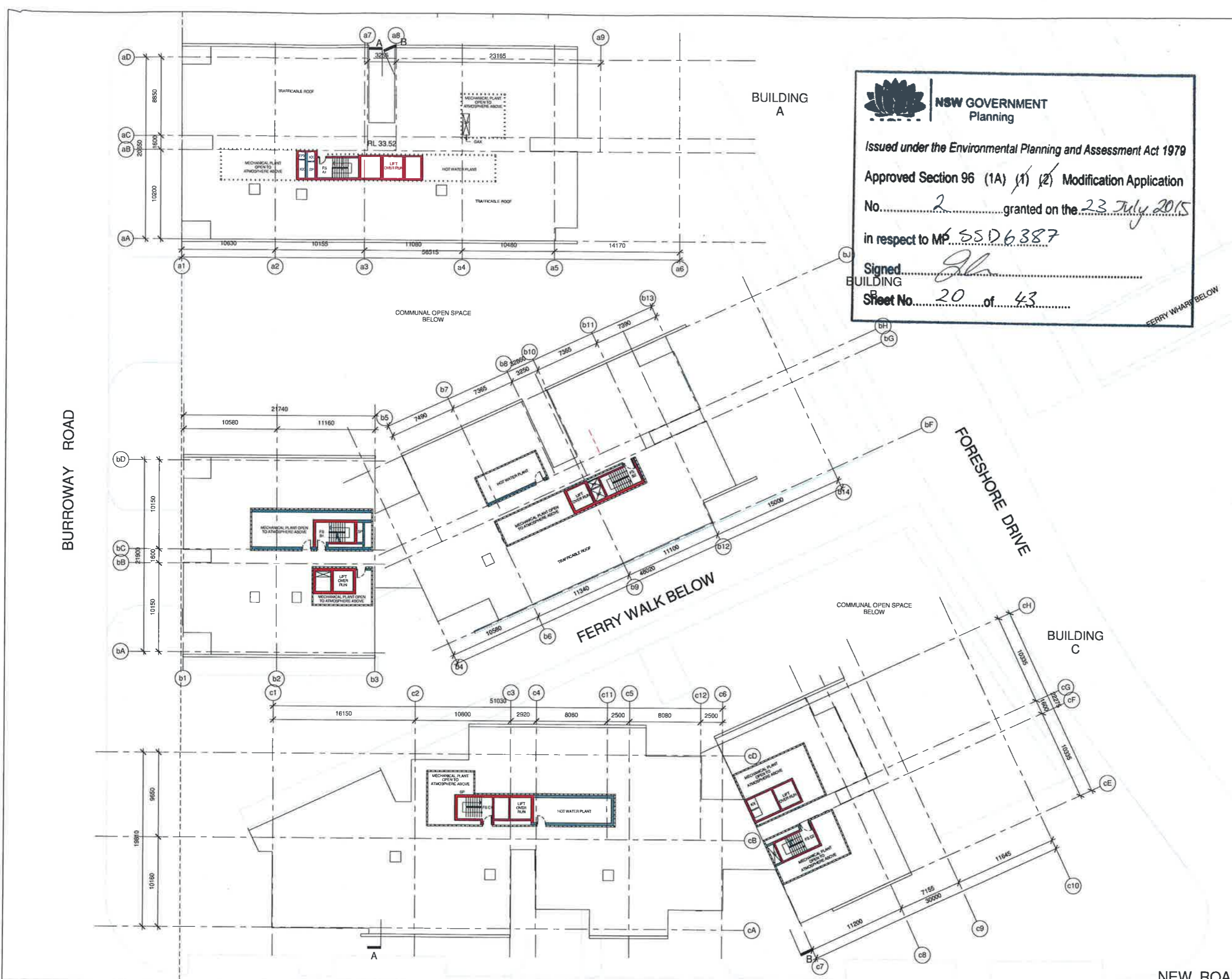
DRAWING TITLE  
**LEVEL 9 RL 30.42**

SCALE (ORIGINAL SIZE A1)	CHECKED
1 : 200	JN
PROJECT NUMBER	ISSUE
14 003	J

BURROWAY ROAD

FORESHORE DRIVE

NEW ROAD



**NSW GOVERNMENT Planning**

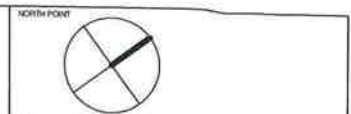
Issued under the Environmental Planning and Assessment Act 1979

Approved Section 96 (1A) (1) (2) Modification Application No. 2 granted on the 23 July 2015

in respect to MP SSD6387

Signed [Signature]

Sheet No. 20 of 43



Stanic architects is the owner of the copyright subsisting in these drawings, plans, designs and specifications. They must not be used, reproduced or copied, in whole or in part, nor may the information, ideas and concepts therein contained (which are confidential to Stanic architects) be disclosed to any person without the prior written consent of that company.

REV	DESCRIPTION OF CHANGE	DATE
1	DA REVISION	05/08/14
2	DA REVISION	28/10/14
3	S90 ISSUE	01/02/15

**LEGEND**

- AWN 1 ALUMINIUM SOFFIT AWNING SILVER
- AWN 2 SUN SHADING DEVICE TO CHILD CARE CENTRE
- BAL 1 OPAQUE WHITE GLASS BALUSTRADE
- BAL 2 CLEAR GLASS BALUSTRADE
- BAL 4 CHILDPROOF FRAMELESS GLASS BALUSTRADE TO CHILD CARE CENTRE
- P 1 PAINT FINISH - DULUX P14810 GREY PEBBLE QUARTER STR
- PC 1 GROOVED PRECAST CONCRETE PANEL PAINT FINISH
- PC 3 CONCRETE PAINT FINISH TO MATCH WF1
- SC 1 PERFORATED ANODISED ALUMINIUM VERTICAL LOUVERED SCREEN
- SC 2 ANODISED ALUMINIUM FINISH UNIVERSAL ANODISERS VERTICAL LOUVERED SCREEN
- SC 3 ANODISED ALUMINIUM FINISH CHILD CARE CENTRE PERIMETER SCREEN
- SC 4 ROOF PLANT SCREEN
- WF 1 WINDOW FRAMES - INTERPON 62015 ULTRAVA ASTEROID PEARL MATT VV270A

**LEGEND**

- 1 BEDROOM APARTMENT
- 2 BEDROOM APARTMENT
- 3 BEDROOM APARTMENT
- BALCONY
- CORRIDOR
- A AFFORDABLE HOUSING
- ACCESSIBLE APARTMENT
- T TANDEM CAR SPACE
- M METER CUPBOARD
- FX FIRE EXTINGUISHER
- GAX GREASE ARRESTOR EXHAUST RISER
- GC GARBAGE CHUTE
- CF CONDENSER FARM

PROJECT MANAGER  
**IONIC MANAGEMENT PTY. LTD**

LEVEL 10, CHIFLEY TOWER 2 CHIFLEY SQUARE SYDNEY 2000 P: 02 813 0240 0299@ionic.net.au

CLIENT  
**PAYCE CONSOLIDATED LTD**

ARCHITECTS  
**stanic architects**  
 Level 2, 243 Liverpool Street  
 East Sydney NSW 2010  
 T: (61 2) 9359 2588  
 E: info@stanic.com.au  
 ABN: 11902833461

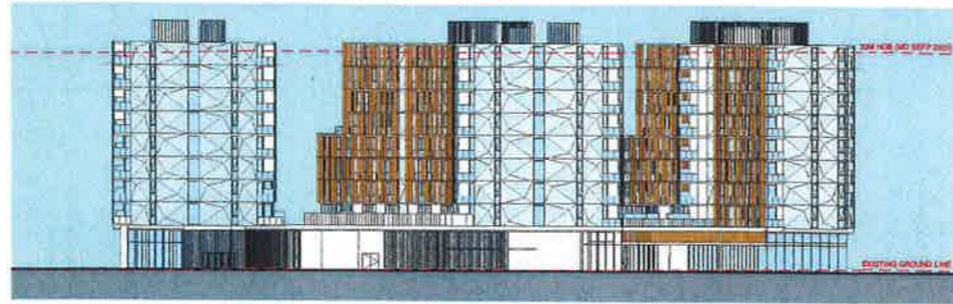
**HDR | RICE DAUBNEY**

PROJECT  
**SOPA "DOCK" 1 BURROWAY RD**  
 WENTWORTH POINT, THE WHARF SITE  
 SYDNEY OLYMPIC PARK

DRAWING TITLE  
**LEVEL 10 RL 33.62 (ROOF)**

SCALE: (ORIGINAL SIZE A1)	CHECKED	
1 : 200	JN	
PROJECT NUMBER	DRAWING NUMBER	ISSUE
14 003	DA 1309	J

NEW ROAD



1 SITE ELEVATION SOUTH  
1 : 500



2 SITE ELEVATION NORTH  
1 : 500



3 SITE ELEVATION EAST  
1 : 500



4 SITE ELEVATION WEST  
1 : 500

Statistic architects is the owner of the copyright subsisting in these drawings, plans, designs and specifications. They must not be used, reproduced or copied, in whole or in part, nor may the information, ideas and concepts therein contained (which are confidential to Statistic architects) be disclosed to any person without the prior written consent of that company.

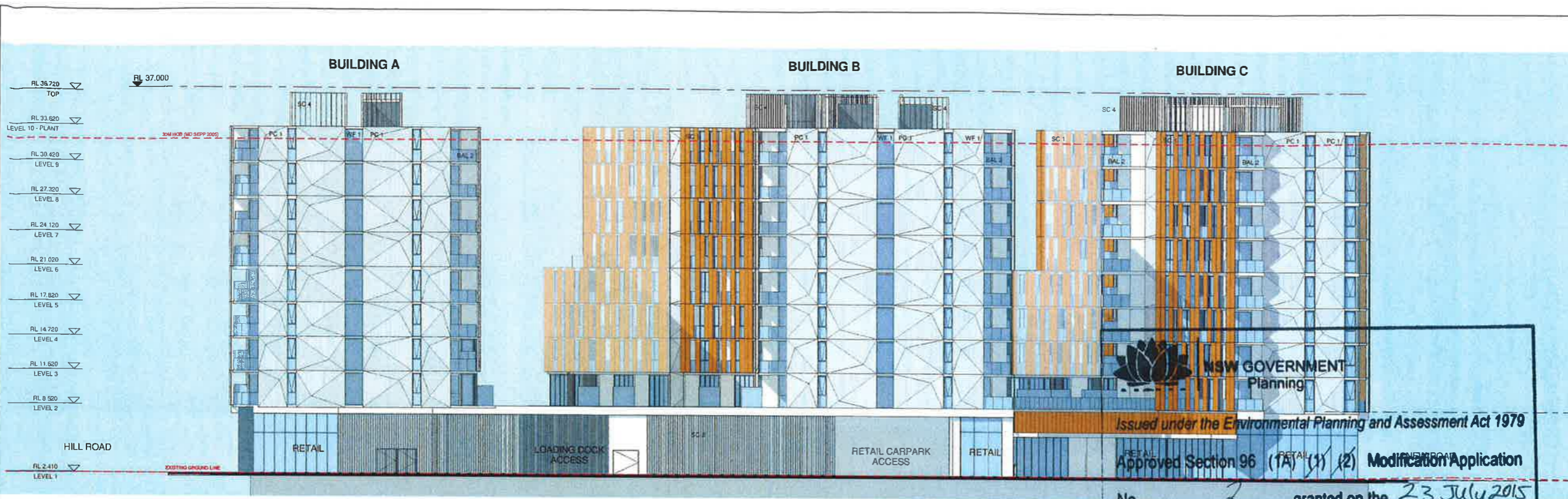
REV	DESCRIPTION OF CHANGE	DATE
H	DA REVISION	05.08.14
I	DA REVISION	28.10.14
J	S&I ISSUE	01.05.15

**NSW GOVERNMENT Planning**

Issued under the Environmental Planning and Assessment Act 1979

Approved Section 96 (1A) (1) (2) Modification Application  
No. 2 granted on the 23 July 2015  
in respect to MP SSD 6387  
Signed [Signature]  
Sheet No. 21 of 43

PROJECT MANAGER <b>IONIC MANAGEMENT PTY. LTD</b> 	
LEVEL 37, CHIFLEY TOWER 2 CHIFLEY SQUARE SYDNEY 2000 P: 02 85110240 M: 02 85110240	
CLIENT <b>PAYCE CONSOLIDATED LTD</b> 	
LEVEL 37, CHIFLEY TOWER 2 CHIFLEY SQUARE SYDNEY 2000 P: 02 8080 2200 F: 02 8080 2299 M: 02 8080 2299	
ARCHITECTS <b>stanisic architects</b> Level 2, 243 Liverpool Street East Sydney NSW 2010 T (61 2) 9358 2558 E info@stanisic.com.au ABN 1 1020262481	
<b>HDR   RICE DAUBNEY</b>	
PROJECT <b>SOPA "DOCK" 1 BURROWAY RD</b> WENTWORTH POINT, THE WHARF SITE SYDNEY OLYMPIC PARK	
DRAWING TITLE <b>SITE ELEVATIONS</b>	
SCALE: (ORIGINAL SIZE A1) 1 : 500	CHECKED JN
PROJECT NUMBER 14 003	ISSUE DA 1500



1 ELEVATION SOUTH ELEVATION 1 : 200

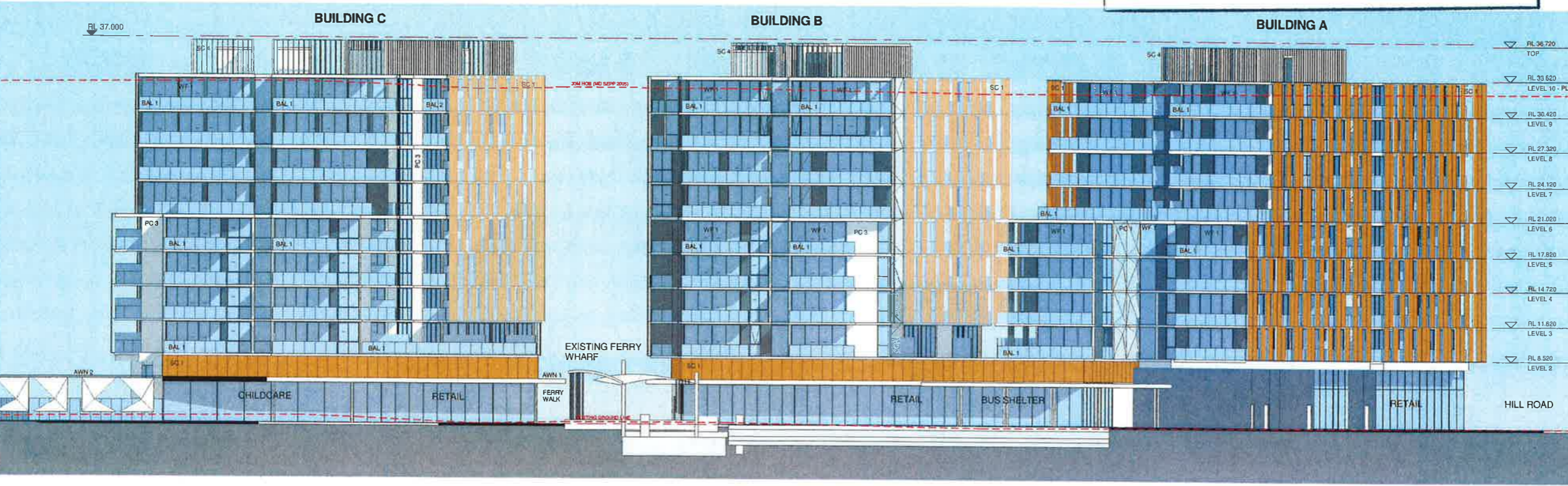
NSW GOVERNMENT Planning  
 Issued under the Environmental Planning and Assessment Act 1979  
 Approved Section 96 (1A) (1) (2) Modification Application  
 No. 2 granted on the 23 July 2015  
 in respect to MP 55D 6387  
 Signed *gl*  
 Sheet No. 22 of 43

stanisic architects is the owner of the copyright subsisting in these drawings, plans, designs and specifications. They must not be used, reproduced or copied, in whole or in part, nor may the information, ideas and concepts therein (including but not limited to confidential to Stanisic architects) be disclosed to any person without the prior written consent of Stanisic architects.

REV	DESCRIPTION OF CHANGE	DATE
H	DA REVISION	06.09.14
I	DA REVISION	28.16.14
J	596 ISSUE	01.05.15

LEGEND

AWN 2	SCOFFIT AWNING SILVER
AWN 3	SCOFFIT AWNING SILVER
AWN 4	SCOFFIT AWNING SILVER
BAL 1	OPAQUE WHITE GLASS BALUSTRADE
BAL 2	CLEAR GLASS BALUSTRADE
BAL 3	CHILDPROOF FRAMELESS GLASS BALUSTRADE TO CHILD CARE CENTRE
BAL 4	CHILDPROOF FRAMELESS GLASS BALUSTRADE TO CHILD CARE CENTRE
P 1	PAINT FINISH - DULUX P14B10 'GREY PEBBLE' QUARTER STR
PC Level 1	CONCRETE PANEL PAINT
PC 1	CONCRETE PAINT FINISH TO MATCH WF 1
PC 2	PERFORATED ANODISED ALUMINIUM VERTICAL LOUVERED SCREEN. ANODISED ALUMINIUM UNIVERSAL ANODISERS 'ORIENTAL GOLD' PERFORATED VERTICAL LOUVERED SCREEN. ANODISED ALUMINIUM FINISH
PC 3	CHILD CARE CENTRE PERIMETER SCREEN
SC 1	ROOF PLANT SCREEN
SC 2	CHILD CARE CENTRE PERIMETER SCREEN
SC 3	ROOF PLANT SCREEN
SC 4	ROOF PLANT SCREEN
WF 1	WINDOW FRAMES - INTERPON D2015 ULTRIVA ASTEROID PEARL MATT YY270A



2 ELEVATION NORTH ELEVATION 1 : 200

PROJECT MANAGER  
**IONIC MANAGEMENT PTY. LTD**  
 LEVEL 37, CHIFLEY TOWER 2 CHIFLEY SQUARE SYDNEY NSW P: 02 8513 0248 M: 02 8208 2798 ionic@ionic.net.au

CLIENT  
**PAYCE CONSOLIDATED LTD**  
 LEVEL 37, CHIFLEY TOWER 2 CHIFLEY SQUARE SYDNEY NSW P: 02 8208 2798 M: 02 8208 2798 rca@payce.com.au

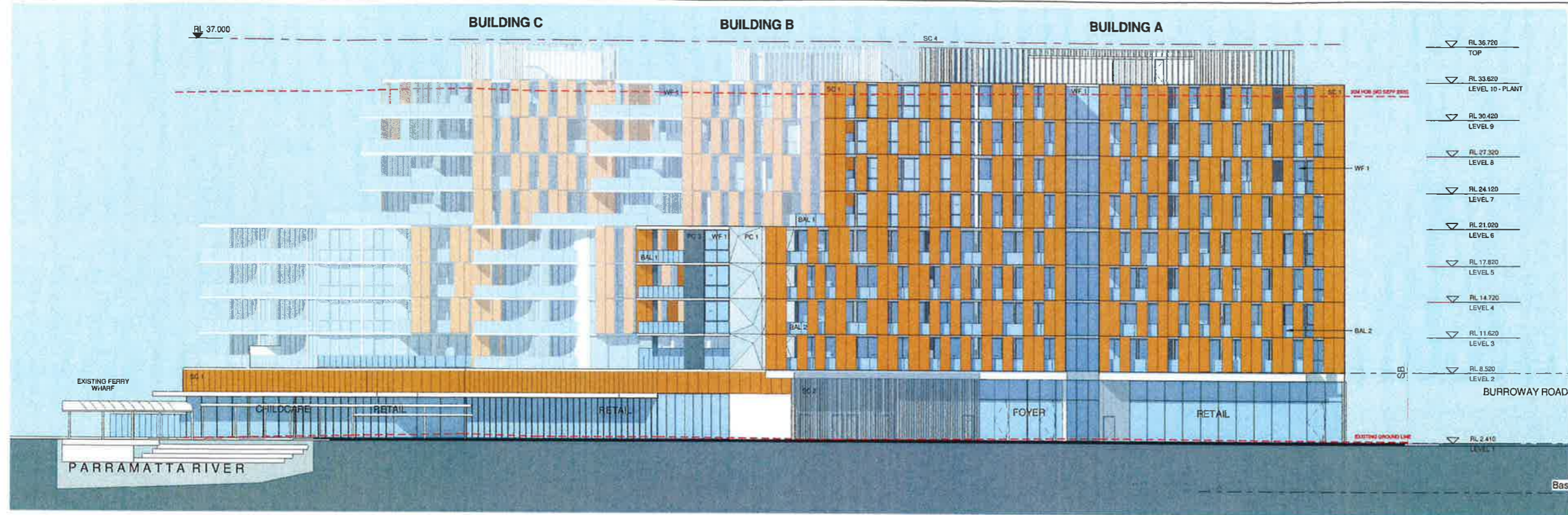
ARCHITECTS  
**stanisic architects**  
 Level 2, 243 Liverpool Street East Sydney NSW 2010 T: (61 2) 9358 2586 E: info@stanisic.com.au A/N: 11002639451

**HJR | RICE DAUBNEY**

PROJECT  
**SOPA "DOCK" 1 BURROWAY RD**  
 WENTWORTH POINT, THE WHARF SITE SYDNEY OLYMPIC PARK

DRAWING TITLE  
**ELEVATION NORTH & SOUTH**

SCALE (ORIGINAL SIZE A1)	CHECKED	
1 : 200	JN	
PROJECT NUMBER	DRAWING NUMBER	ISSUE
14 003	DA 1501	J



NORTH POINT

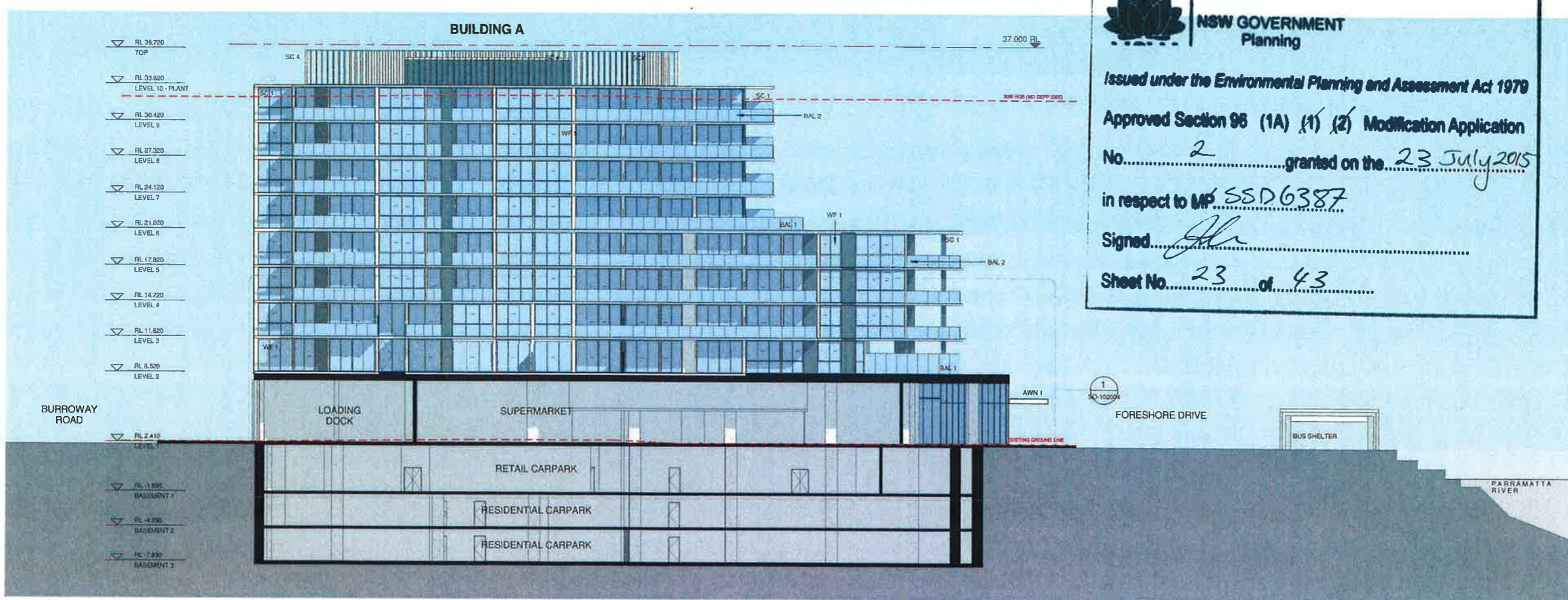
Starisic architects is the owner of the copyright subsisting in these drawings, plans, designs and specifications. They must not be used, reproduced or copied, in whole or in part, nor may the information, ideas and concepts therein contained (which are confidential to Starisic architects) be disclosed to any person without the prior written consent of that company.

REV	DESCRIPTION OF CHANGE	DATE
H	DA REVISION	05.08.14
I	DA REVISION	28.10.14
J	SS6 ISSUE	01.05.15

LEGEND

- AWN 1 ALUMINUM SOFFIT AWNING SILVER
- AWN 2 SUN SHADING DEVICE TO CHILD CARE CENTRE
- OUTDOOR PLAY AREA
- OPACQUE WHITE GLASS BALUSTRADE
- BAL 1 CLEAR GLASS BALUSTRADE
- BAL 2 CLEAR GLASS BALUSTRADE
- CHILDPROOF FRAMELESS GLASS BALUSTRADE TO CHILD CARE CENTRE
- PAINT FINISH - DULUX P1481Q 'GREY PEBBLE'
- QUARTER STR GROUVED PRECAST CONCRETE PANEL PAINT FINISH
- PC 1 CONCRETE PAINT FINISH TO MATCH WF 1
- SC 1 PERFORATED ANODISED ALUMINIUM VERTICAL LOUVERED SCREEN ANODISED ALUMINIUM UNIVERSAL ANODISED 'ORIENTAL GOLD' PERFORATED VERTICAL LOUVERED SCREEN ANODISED ALUMINIUM FINISH
- SC 2 CHILD CARE CENTRE PERIMETER SCREEN ROOF PLANT SCREEN
- SC 3 CHILD CARE CENTRE PERIMETER SCREEN
- SC 4 ROOF PLANT SCREEN
- WF 1 WINDOW FRAMES - INTERPON D2015 ULTRIVA ASTEROID PEARL MATT Y1270A

1 ELEVATION  
A-B2 WEST ELEVATION  
1 : 200



**NSW GOVERNMENT Planning**

Issued under the Environmental Planning and Assessment Act 1979

Approved Section 96 (1A) (1) (2) Modification Application

No. 2 granted on the 23 July 2015

in respect to MP SSD 6387

Signed [Signature]

Sheet No. 23 of 43



2 ELEVATION  
A - EAST ELEVATION  
1 : 200

PROJECT MANAGER

IONIC MANAGEMENT PTY. LTD **ionic**

LEVEL 37, CHIFLEY TOWER 2 CHIFLEY SQUARE STONEY MOUNT P: 02 8013 0240 ionic@ionic.net.au

CLIENT

PAYCE CONSOLIDATED LTD **PAYCE**

LEVEL 37, CHIFLEY TOWER 2 CHIFLEY SQUARE STONEY MOUNT P: 02 8060 2200 P: 02 8060 2299 reception@payce.com.au

ARCHITECTS

stanisic architects

Level 2, 243 Liverpool Street East Sydney NSW 2010 T: (61 2) 9358 2588 E: info@stanisic.com.au ABN: 11002653461

**HR | RICE DAUBNEY**

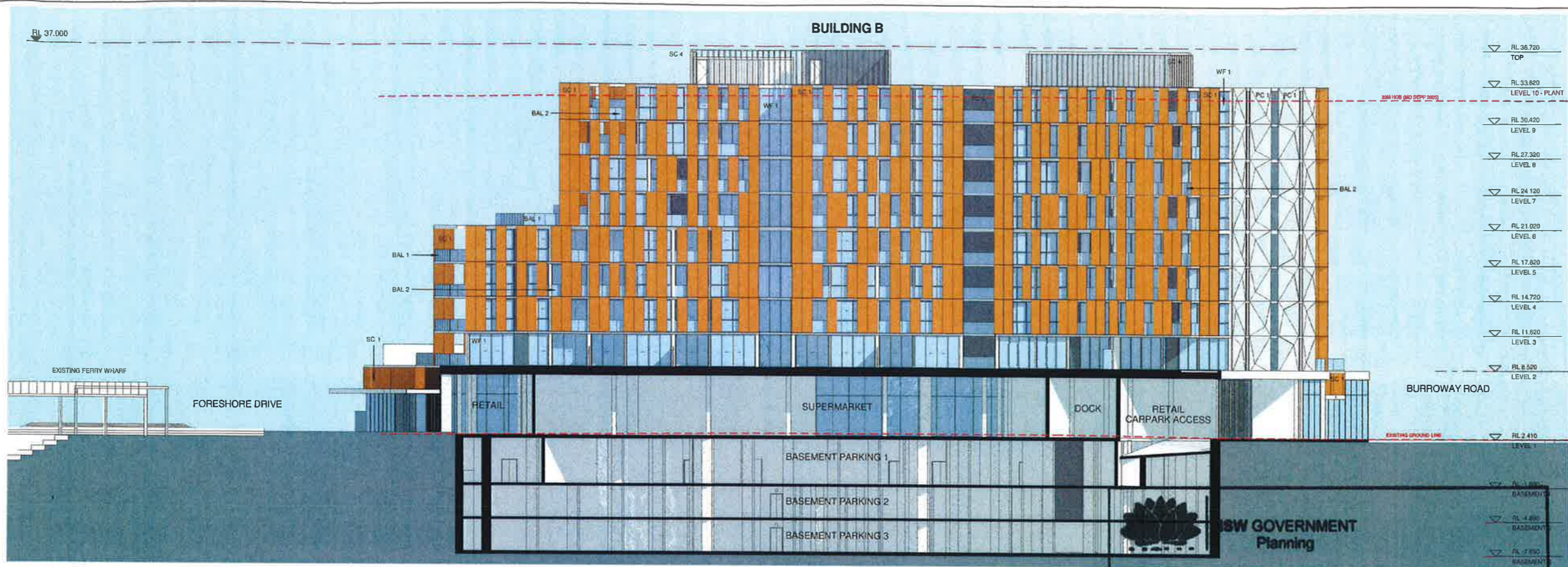
PROJECT

SOPA "DOCK" 1 BURROWAY RD WENTWORTH POINT, THE WHARF SITE SYDNEY OLYMPIC PARK

DRAWING TITLE

ELEVATION BUILDING A EAST & WEST

SCALE (ORIGINAL SIZE A1)	CHECKED	
1 : 200	JN	
PROJECT NUMBER	DRAWING NUMBER	ISSUE
14 003	DA 1502	J



NORTH POLE

Stanic architects is the owner of the copyright subsisting in these drawings, plans, designs and specifications. They must not be used, reproduced or copied, in whole or in part, nor may the information, ideas and concepts thereon contained (which are confidential to Stanic architects) be disclosed to any person without the prior written consent of that company.

REV	DESCRIPTION OF CHANGE	DATE
H	DA REVISION	05.09.14
I	DA REVISION	28.10.14
J	SRI ISSUE	01.05.15
K	SCREENS TO RETAIL LEVEL 1000N FOR CLARITY NOTES AMENDED	07.06.15

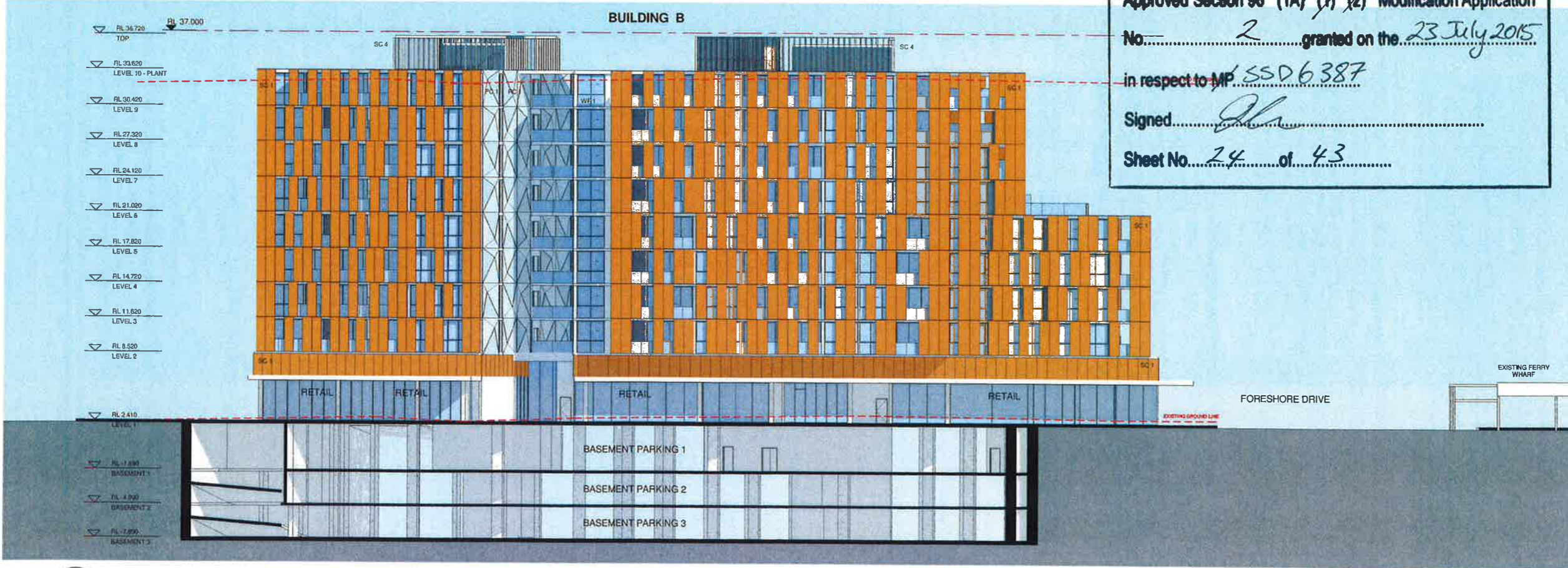
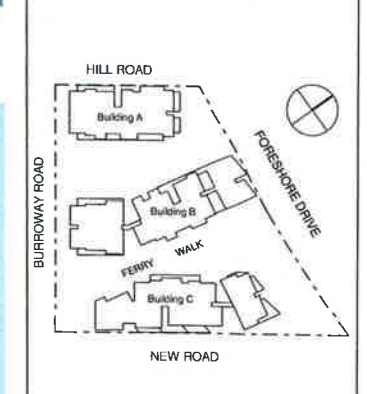
Level 2

8520 LEGEND

- AWN 1 ALUMINIUM SOFFIT AWNING SILVER
- AWN 2 SUN SHADING DEVICE TO CHILD CARE CENTRE OUTDOOR PLAY AREA
- BAL 1 COPOLYMER WHITE GLASS BALUSTRADE
- BAL 2 CLAY GLASS BALUSTRADE
- BAL 3 CHROME ROOF FRAMELESS GLASS BALUSTRADE
- P 2410 TO CHILD CARE CENTRE QUARTER STR. GROOVED PRECAST CONCRETE PANEL PAINT FINISH
- Basement 1 CONCRETE PAINT FINISH TO MATCH WF1
- SC 1 PERFORATED ANODISED ALUMINIUM VERTICAL
- SC 2 UNIVERSAL ANODISED ORIENTAL GOLD PERFORATED VERTICAL LOUVERED SCREEN ANODISED ALUMINIUM FINISH
- SC 3 CHILD CARE CENTRE PERIMETER SCREEN
- SC 4 ROOF PLANT SCREEN
- WF 1 WINDOW FRAMES - INTERPON 00015 ULTRIVA ASTEROID PEARL MATT Y270A

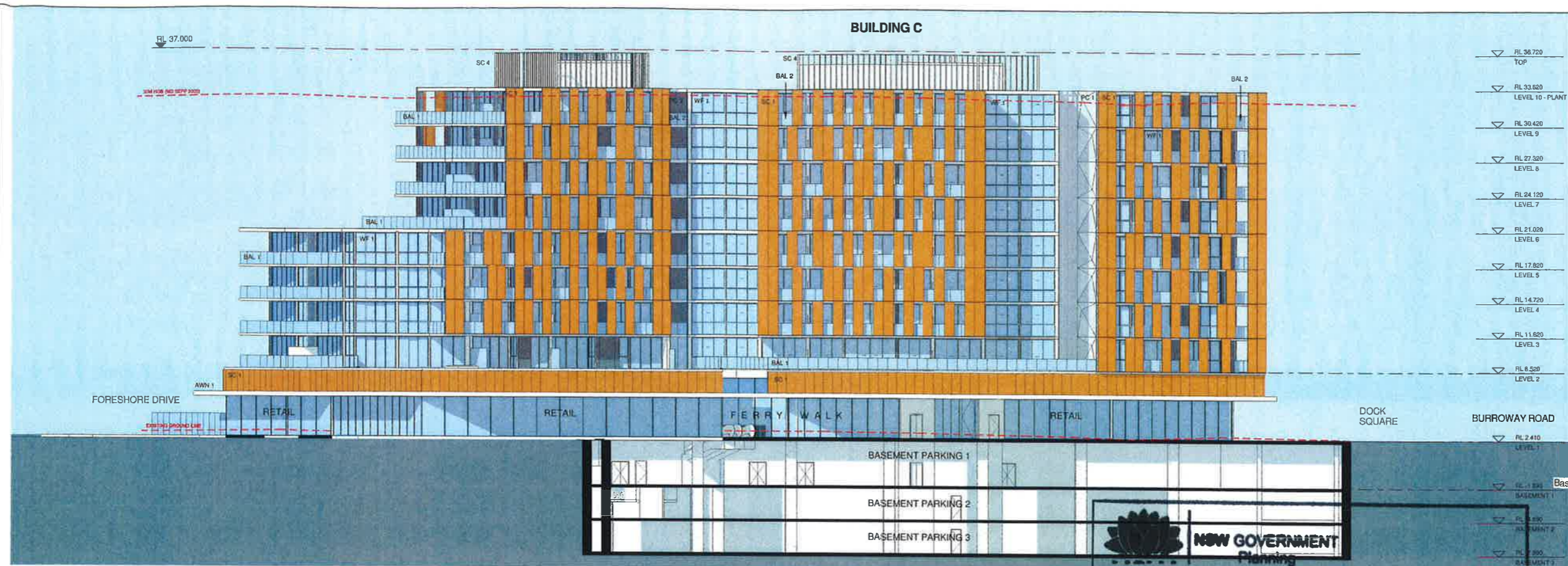
1 ELEVATION B1-B2 WEST ELEVATION 1 : 200

Issued under the Environmental Planning and Assessment Act 1979  
 Approved Section 98 (1A) (1) (2) Modification Application  
 No. 2 granted on the 23 July 2015  
 in respect to MP 5506387  
 Signed: [Signature]  
 Sheet No. 24 of 43



PROJECT MANAGER  
 IONIC MANAGEMENT PTY. LTD  
 LEVEL 37, CHIFLEY TOWER 2 CHIFLEY SQUARE SYDNEY 2000 P: 02 8511 0240  
 CLIENT  
 PAYCE CONSOLIDATED LTD  
 LEVEL 37, CHIFLEY TOWER 2 CHIFLEY SQUARE SYDNEY 2000 P: 02 8580 2200  
 ARCHITECTS  
 stanic architects  
 Level 2, 243 Liverpool Street East Sydney NSW 2010  
 T: (61 2) 9358 2568  
 E: info@stanic.com.au  
 ABN 11 002833481  
 PROJECT  
 SOPA "DOCK" 1 BURROWAY RD WENTWORTH POINT, THE WHARF SITE SYDNEY OLYMPIA PARK  
 DRAWING TITLE  
 ELEVATION BUILDING B EAST & WEST  
 SCALE: (ORIGINAL SIZE A3)  
 1 : 200  
 PROJECT NUMBER: 14 003  
 DRAWING NUMBER: DA 1503  
 CHECKED: JN  
 ISSUE: K

2 ELEVATION B1-B2 EAST ELEVATION 1 : 200



STANISIC ARCHITECTS IS THE OWNER OF THE COPYRIGHT SUBSISTING IN THESE DRAWINGS, PLANS, DESIGNS AND SPECIFICATIONS. THEY MUST NOT BE USED, REPRODUCED OR COPIED, IN WHOLE OR IN PART, NOR MAY THE INFORMATION, IDEAS AND CONCEPTS THEREIN BE DISCLOSED TO ANY PERSON WITHOUT THE PRIOR WRITTEN CONSENT OF THAT COMPANY.

REV	DESCRIPTION OF CHANGE	DATE
H	DA REVISION	05.08.14
I	DA REVISION	28.10.14
J	S&B ISSUE	01.05.15

▽	RL 36.720	TOP
▽	RL 33.620	LEVEL 10 - PLANT
▽	RL 30.420	LEVEL 9
▽	RL 27.320	LEVEL 8
▽	RL 24.120	LEVEL 7
▽	RL 21.020	LEVEL 6
▽	RL 17.820	LEVEL 5
▽	RL 14.720	LEVEL 4
▽	RL 11.620	LEVEL 3
▽	RL 8.520	LEVEL 2

**LEGEND**

AWN 1	ALUMINIUM SOFFIT AWNING SILVER
AWN 2	SUN SHADING DEVICE TO CHILD CARE CENTRE
BAL 1	OPAL WHITE GLASS BALUSTRADE
BAL 2	OPAL GLASS BALUSTRADE
BAL 3	ROOF TOP FRAMELESS GLASS BALUSTRADE TO CHILD CARE CENTRE
BAL 4	ROOF TOP FRAMELESS GLASS BALUSTRADE TO CHILD CARE CENTRE
PC 1	QUARTER STYR GROUTED PRECAST CONCRETE PANEL, PAINT FINISH
SC 1	CONCRETE, PAINT FINISH TO MATCH WF 1
SC 2	INCORPORATED ANODISED ALUMINIUM VERTICAL LOUVERED SCREEN, ANODISED ALUMINIUM UNIVERSAL ANODISERS 'ORIENTAL GOLD'
SC 3	PERFORATED VERTICAL LOUVERED SCREEN, ANODISED ALUMINIUM FINISH
SC 4	CHILD CARE CENTRE PERIMETER SCREEN
WF 1	ROCK PLANT SCREEN WINDOW FRAMES - INTERPON D2015 ULTRIVA ASTEROID PEARL, MATT YV270A



NEW ROAD

PROJECT MANAGER  
**IONIC MANAGEMENT PTY. LTD**

LEVEL 37, CHIFLEY TOWER 2 CHIFLEY SQUARE SYDNEY 2000  
P: 02 813 0240  
oym@ionic.net.au

CLIENT  
**PAYCE CONSOLIDATED LTD**

LEVEL 37, CHIFLEY TOWER 2 CHIFLEY SQUARE SYDNEY 2000  
P: 02 8690 2500  
P: 02 8690 2599  
payce@payce.com.au

ARCHITECTS  
**stanisic architects**

Level 2, 243 Liverpool Street East Sydney NSW 2010  
T: (61 2) 9358 2588  
E: info@stanisic.com.au  
ABN: 1100263461

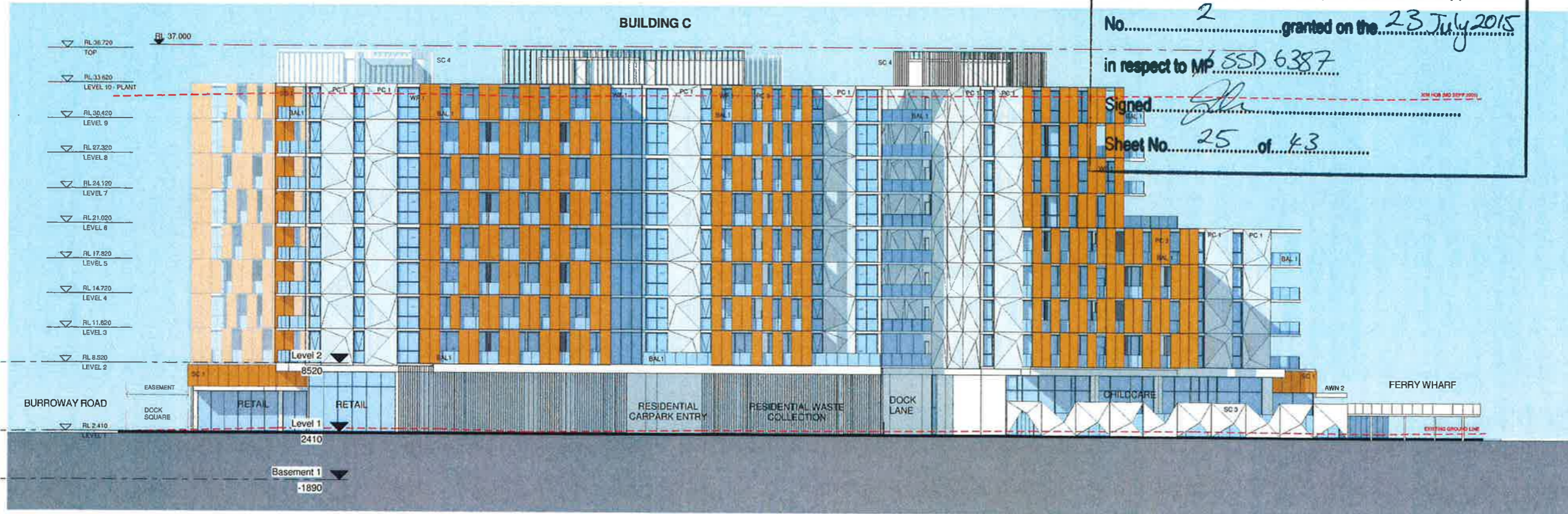
**HR | RICE DAUBNEY**

PROJECT  
**SOPA "DOCK" 1 BURROWAY RD**  
WENTWORTH POINT, THE WHARF SITE SYDNEY OLYMPIC PARK

DRAWING TITLE  
**ELEVATION BUILDING C EAST & WEST**

SCALE (ORIGINAL SIZE A1)	1 : 200	CHECKED	JN
PROJECT NUMBER	14 003	DRAWING NUMBER	DA 1504
		DATE	J

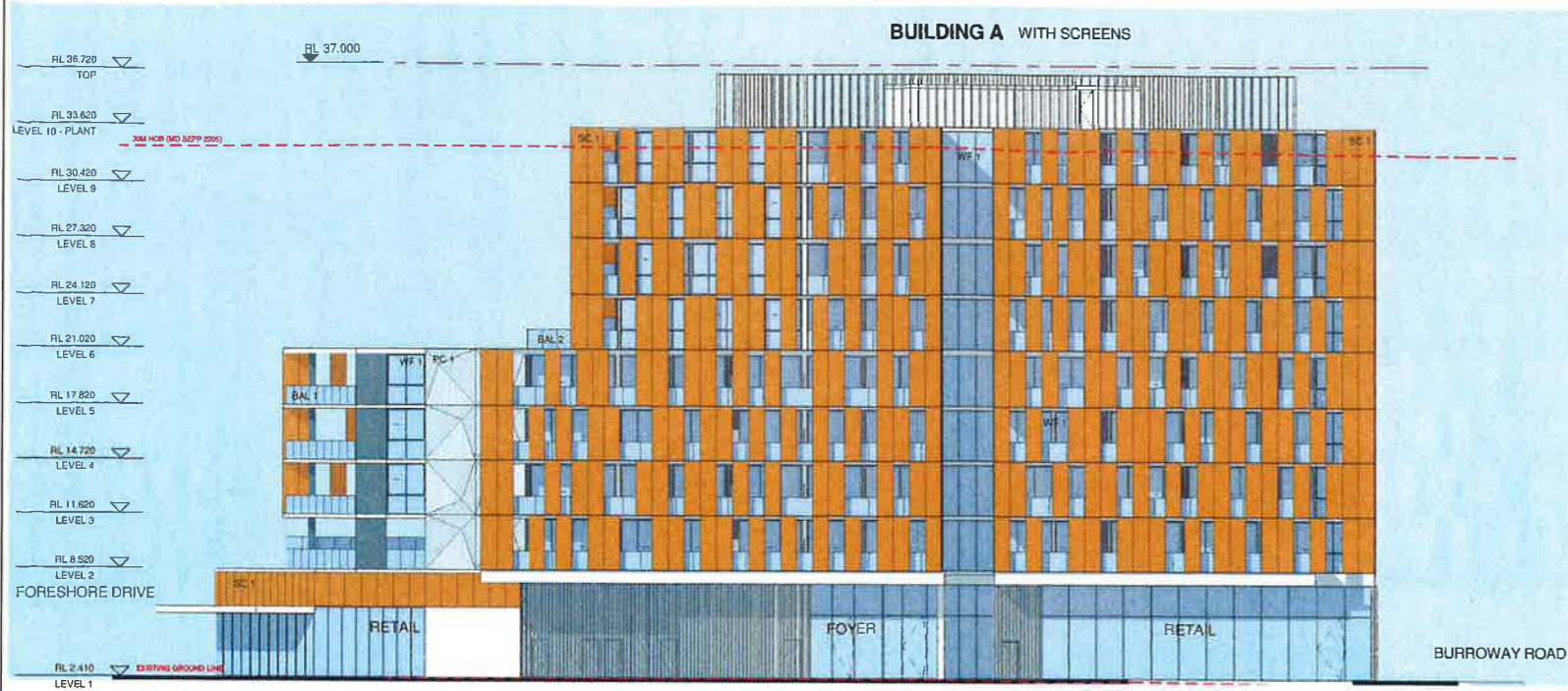
**1** ELEVATION  
C1-C2 WEST ELEVATION  
1 : 200



**2** ELEVATION  
C1-C2 EAST ELEVATION  
1 : 200

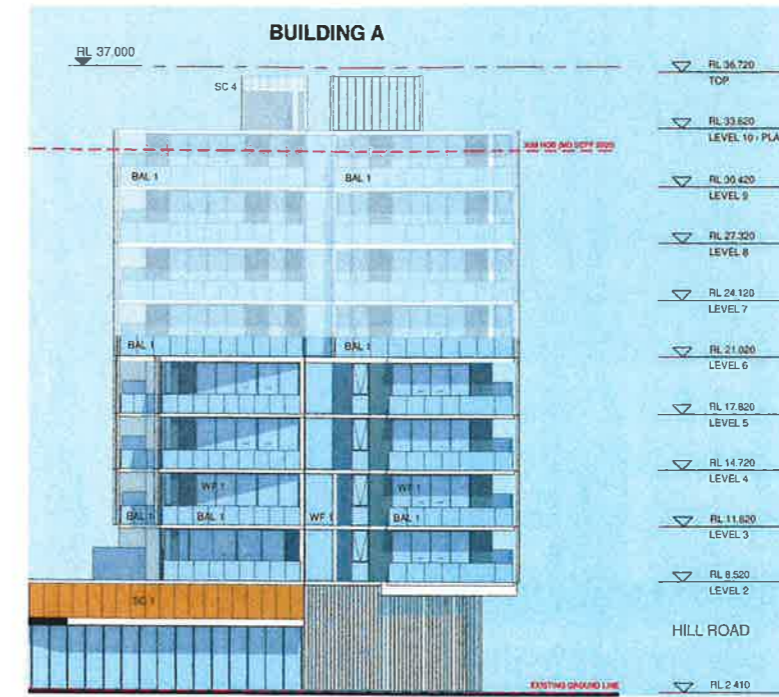
**NSW GOVERNMENT Planning**

Issued under the Environmental Planning and Assessment Act 1979  
Approved Section 96 (1A) (1) (2) Modification Application  
No. 2 granted on the 23 July 2015  
in respect to MP SSD 6387  
Signed [Signature]  
Sheet No. 25 of 43



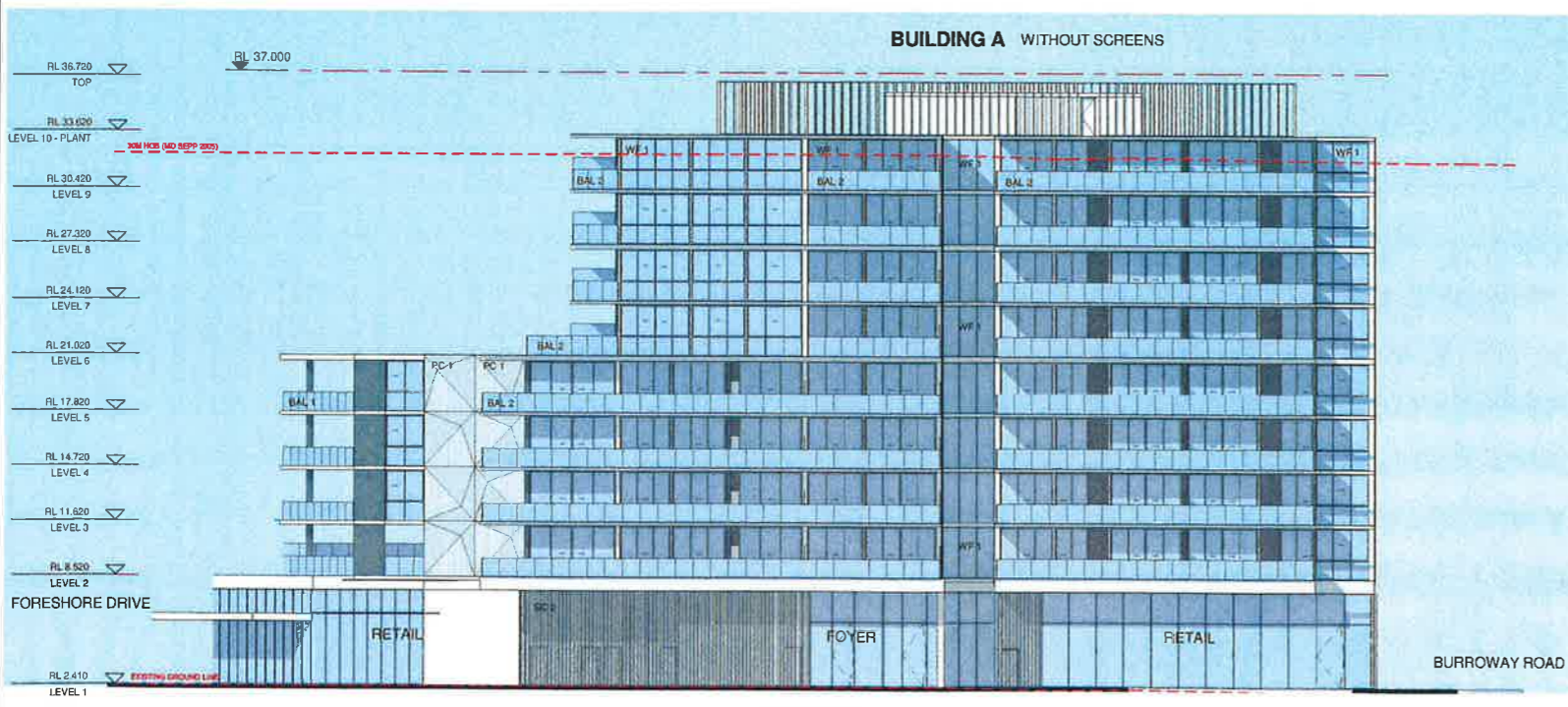
1 ELEVATION  
A - WEST ELEVATION

1 : 200



2 ELEVATION  
A - NORTH ELEVATION

1 : 200



3 ELEVATION  
A - WEST ELEVATION

1 : 200

**NSW GOVERNMENT Planning**

Issued under the Environmental Planning and Assessment Act 1979

Approved Section 98 (1A) (1) (2) Modification Application

No. 2 granted on the 23 July 2015

respect to MP 5506387

Signed: [Signature]

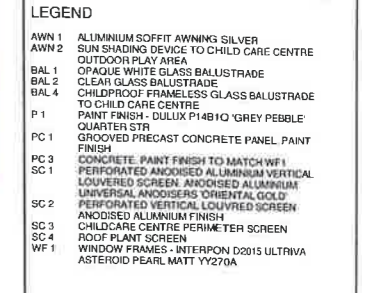
Sheet No. 26 of 43

**REVISIONS**

REV	DESCRIPTION OF CHANGE	DATE
H	DA REVISION	05.08.14
I	DA REVISION	28.10.14
J	S&E ISSUE	01.05.15
K	SCREENS TO RETAIL LEVEL HIDDEN FOR CLARITY. NOTES AMENDED	07.05.15

**LEGEND**

- AWN 1 ALUMINIUM SOFFIT AWNING SILVER
- AWN 2 SUN SHADING DEVICE TO CHILD CARE CENTRE
- OUTDOOR PLAY AREA
- BAL 1 OPAQUE WHITE GLASS BALUSTRADE
- BAL 2 CLEAR GLASS BALUSTRADE
- BAL 4 CHILDPROOF FRAMELESS GLASS BALUSTRADE TO CHILD CARE CENTRE
- P 1 PAINT FINISH - DULUX P14B10 GREY PEBBLE QUARTER STR
- PC 1 GROoved PRECAST CONCRETE PANEL PAINT FINISH
- PC 3 CONCRETE PAINT FINISH TO MATCH WF 1
- SC 1 PERFORATED ANODISED ALUMINIUM VERTICAL LOUVERED SCREEN ANODISED ALUMINIUM UNIVERSAL ANODISERS ORIENTAL GOLD
- SC 2 PERFORATED VERTICAL LOUVERED SCREEN ANODISED ALUMINIUM FINISH
- SC 3 CHILD CARE CENTRE PERIMETER SCREEN
- SC 4 ROOF PLANT SCREEN
- WF 1 WINDOW FRAMES - INTERPON D2015 ULTRAVA ASTEROID PEARL MATT Y270A



**PROJECT MANAGER**

IONIC MANAGEMENT PTY. LTD

**CLIENT**

PAYCE CONSOLIDATED LTD

**ARCHITECTS**

stanisic architects

Level 2, 243 Liverpool Street  
East Sydney NSW 2010  
T (61 2) 9359 2588  
E info@stanisic.com.au  
ABN 11002633461

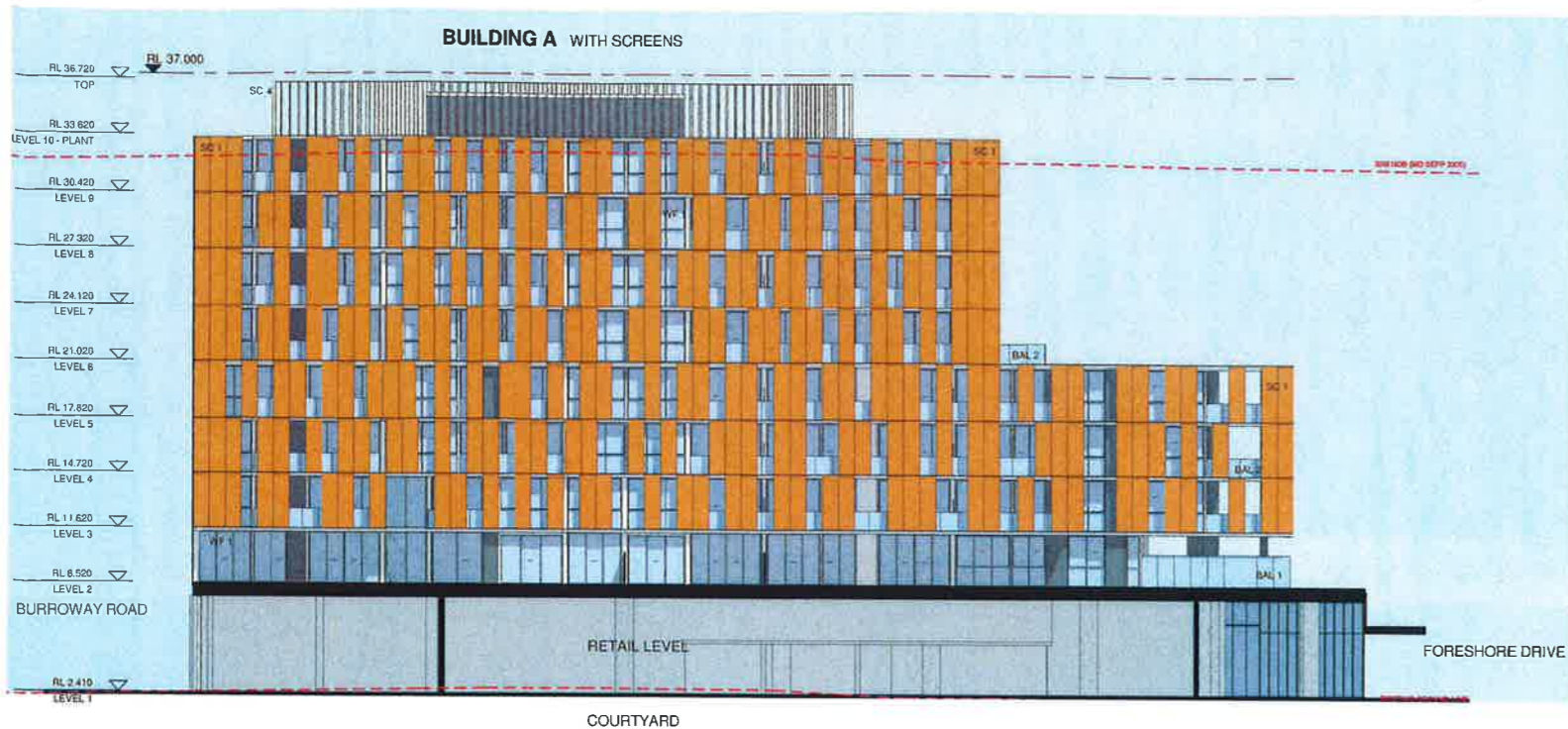
**PROJECT**

SOPA "DOCK" 1 BURROWAY RD  
WENTWORTH POINT, THE WHARF SITE  
SYDNEY OLYMPIC PARK

**DRAWING TITLE**

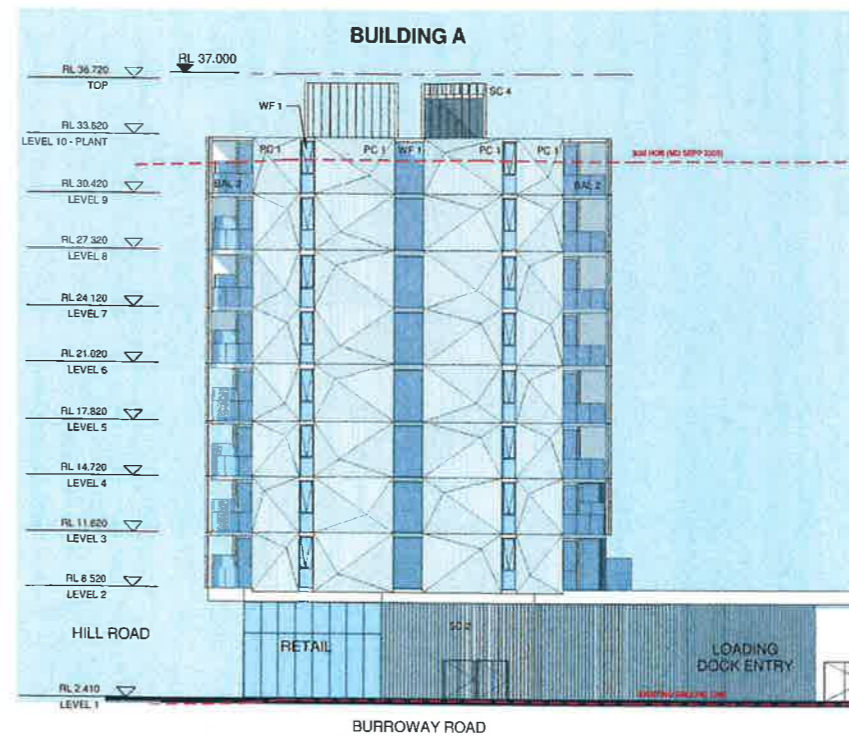
TRUE ELEVATIONS  
ELEVATION BUILDING A WEST & NORTH

SCALE	EXTRINSIC SIZE A1)	CHECKED
1 : 200		JN
PROJECT NUMBER	DRAWING NUMBER	ISSUE
14 003	DA 1550	K



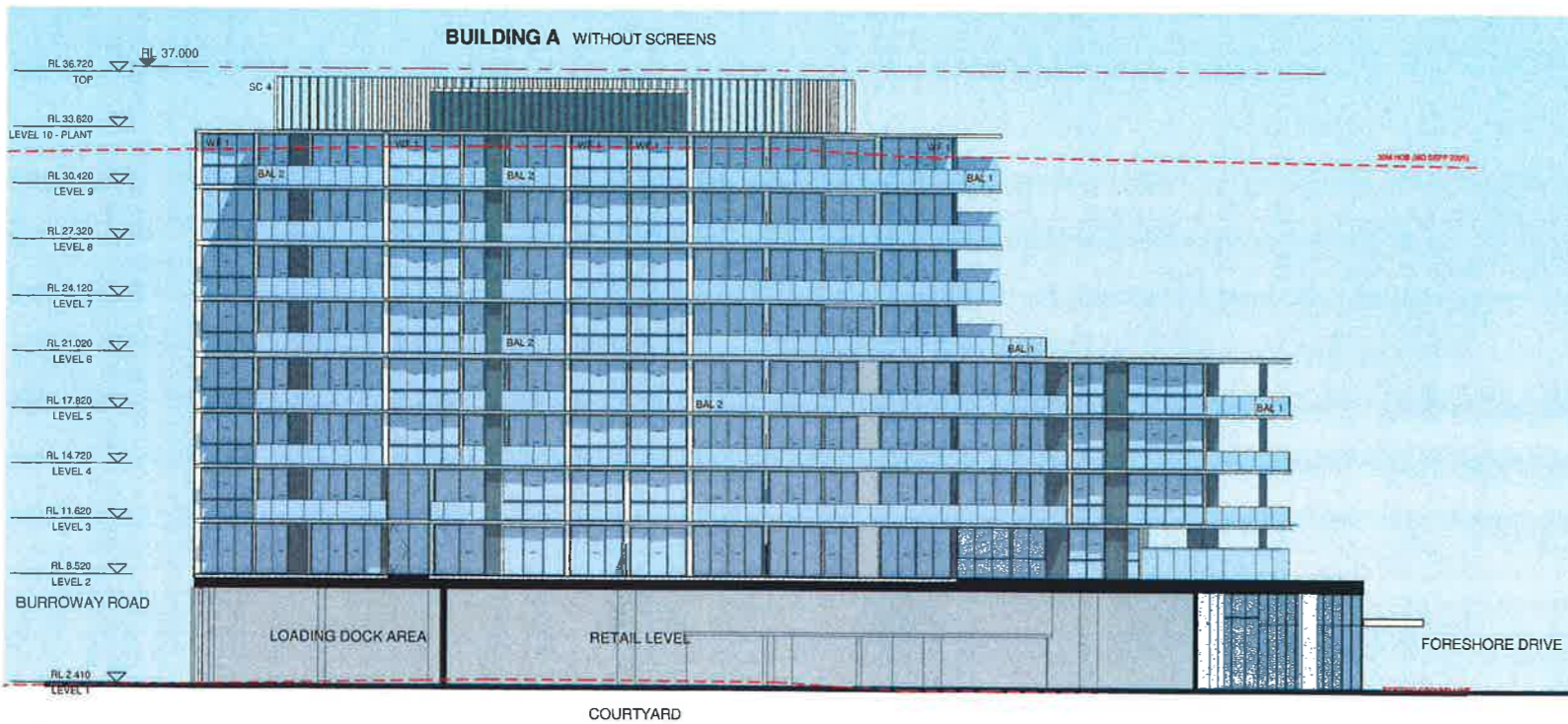
1 ELEVATION  
A - EAST ELEVATION

1 : 200



2 ELEVATION  
A - SOUTH ELEVATION

1 : 200



3 ELEVATION  
A - EAST ELEVATION

1 : 200

STANISIC ARCHITECTS IS THE OWNER OF THE COPYRIGHT EXISTING IN THESE DRAWINGS, PLANS, DESIGNS AND SPECIFICATIONS. THEY MUST NOT BE USED, REPRODUCED OR COPIED, IN WHOLE OR IN PART, FOR ANY PURPOSES WITHOUT THE WRITTEN CONSENT OF STANISIC ARCHITECTS. ANY UNAUTHORIZED USE OF THESE DRAWINGS IS PROHIBITED AND WILL BE PROSECUTED TO THE FULL EXTENT OF THE LAW.

REV	DESCRIPTION OF CHANGE	DATE
H	DA REVISION	05.08.14
I	DA REVISION	28.10.14
J	S&E ISSUE	01.05.15
K	SCREENS TO RETAIL LEVEL, HIDDEN FOR CLARITY, NOTES AMENDED	07.05.15

LEGEND

- AWN 1 ALUMINIUM SOFFIT AWNING SILVER
- AWN 2 SUN SHADING DEVICE TO CHILD CARE CENTRE
- BAL 1 OUTDOOR PLAY AREA
- BAL 2 CLEAR GLASS BALUSTRADE
- BAL 3 CHILDPROOF FRAMELESS GLASS BALUSTRADE TO CHILD CARE CENTRE
- BAL 4 CHILDPROOF FRAMELESS GLASS BALUSTRADE TO CHILD CARE CENTRE
- PC 1 QUARTER STR
- PC 2 GROOVED PRECAST CONCRETE PANEL PAINT FINISH
- PC 3 CONCRETE PAINT FINISH TO MATCH WF 1
- PC 4 PERFORATED ANODISED ALUMINIUM VERTICAL LOUVERED SCREEN ANOCHISED ALUMINIUM UNIVERSAL ANCHORS ORIENTAL GOLD
- SC 1 PERFORATED VERTICAL LOUVERED SCREEN ANOCHISED ALUMINIUM FINISH
- SC 2 CHILD CARE CENTRE PERIMETER SCREEN ANOCHISED ALUMINIUM FINISH
- SC 3 CHILD CARE CENTRE PERIMETER SCREEN ROOF PLANT SCREEN
- SC 4 CHILD CARE CENTRE PERIMETER SCREEN ROOF PLANT SCREEN
- WF 1 WINDOW FRAMES - INTERPON 02015 ULTRIVA ASTEROD FEALMATT Y2270A



**NSW GOVERNMENT Planning**

Issued under the Environmental Planning and Assessment Act 1979

Approved Section 96 (1A) (1) (2) Modification Application

No. 2 granted on the 23 July 2015

in respect to MP SS.D.6387

Signed *[Signature]*

Sheet No. 27 of 43

PROJECT MANAGER  
**IONIC MANAGEMENT PTY. LTD**

LEVEL 37 CHIFLEY TOWER 2 CHIFLEY SQUARE SYDNEY 2000 P: 02 831 31010 E: ionic@ionic.net.au

CLIENT  
**PAYCE CONSOLIDATED LTD**

LEVEL 37 CHIFLEY TOWER 2 CHIFLEY SQUARE SYDNEY 2000 P: 02 8360 2330 F: 02 8360 2339 E: info@payce.com.au

ARCHITECTS  
**stanisic architects**  
Level 2, 243 Liverpool Street East Sydney NSW 2010  
T: (61 2) 9359 2588  
E: info@stanisic.com.au  
ABN 11002633461

**H&R BICE BAUBNEY**

PROJECT  
**SOPA "DOCK" 1 BURROWAY RD**  
WENTWORTH POINT, THE WHARF SITE SYDNEY OLYMPIC PARK

DRAWING TITLE  
**TRUE ELEVATIONS ELEVATION BUILDING A EAST & SOUTH**

SCALE (ORIGINAL SIZE A1)  
1 : 200

CHECKED  
JN

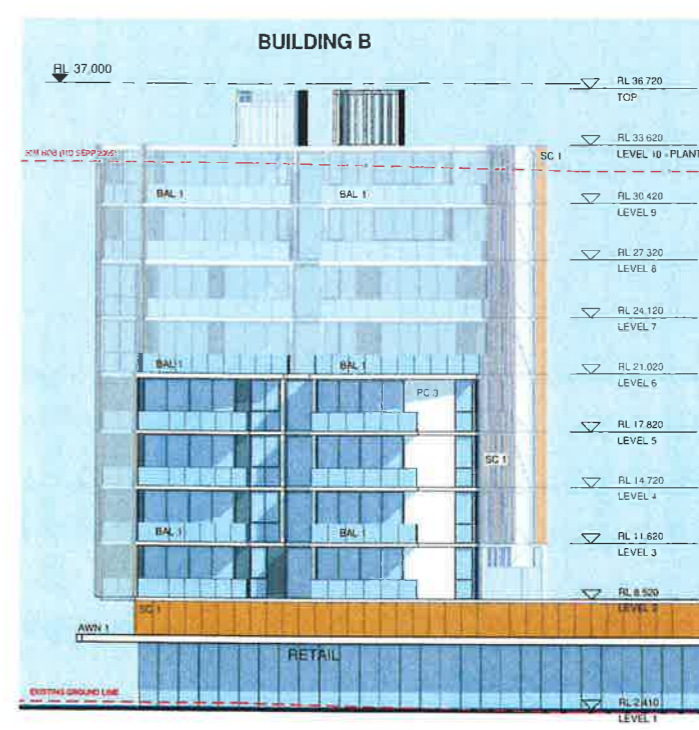
PROJECT NUMBER  
14 003

DRAWING NUMBER  
DA 1551

SCALE  
K

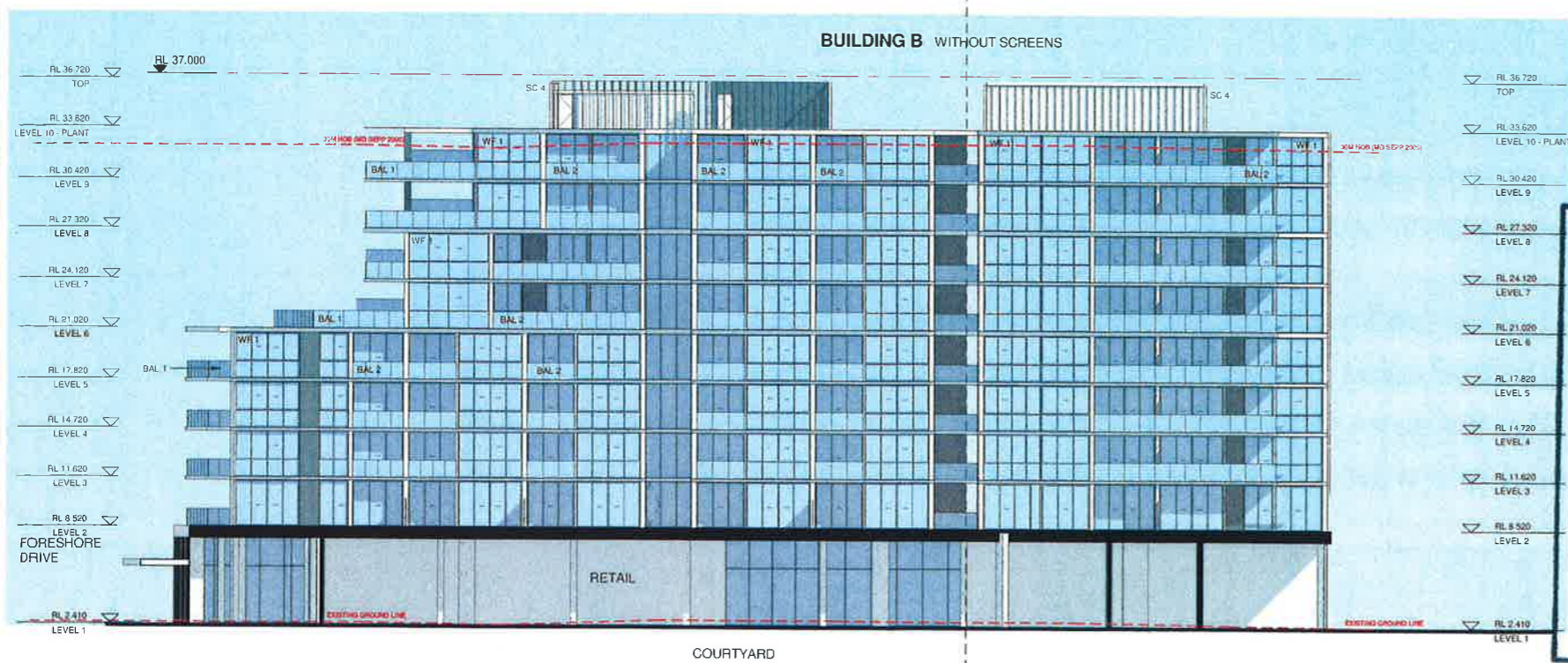


1 ELEVATION B2 - WEST ELEVATION 1 : 200



2 ELEVATION B1 - WEST ELEVATION 1 : 200

3 ELEVATION B1 - NORTH ELEVATION 1 : 200



4 ELEVATION B2 - WEST ELEVATION 1 : 200

5 ELEVATION B1 - WEST ELEVATION 1 : 200

**NSW GOVERNMENT Planning**

Issued under the Environmental Planning and Assessment Act 1979

Approved Section 96 (1A) (1) (2) Modification Application

No. 2 granted on the 23 July 2015

in respect to MP SSD 6387

Signed [Signature]

Sheet No. 28 of 43

STANISIC ARCHITECTS IS THE OWNER OF THE COPYRIGHT SUBSISTING IN THESE DRAWINGS, PLANS, DESIGNS AND SPECIFICATIONS. THEY MUST NOT BE USED, REPRODUCED OR COPIED, IN WHOLE OR IN PART, NOR MAY THE INFORMATION, IDEAS AND CONCEPTS THEREIN CONTAINED (WHICH ARE CONFIDENTIAL TO STANISIC ARCHITECTS) BE DISCLOSED TO ANY PERSON WITHOUT THE PRIOR WRITTEN CONSENT OF THAT COMPANY.

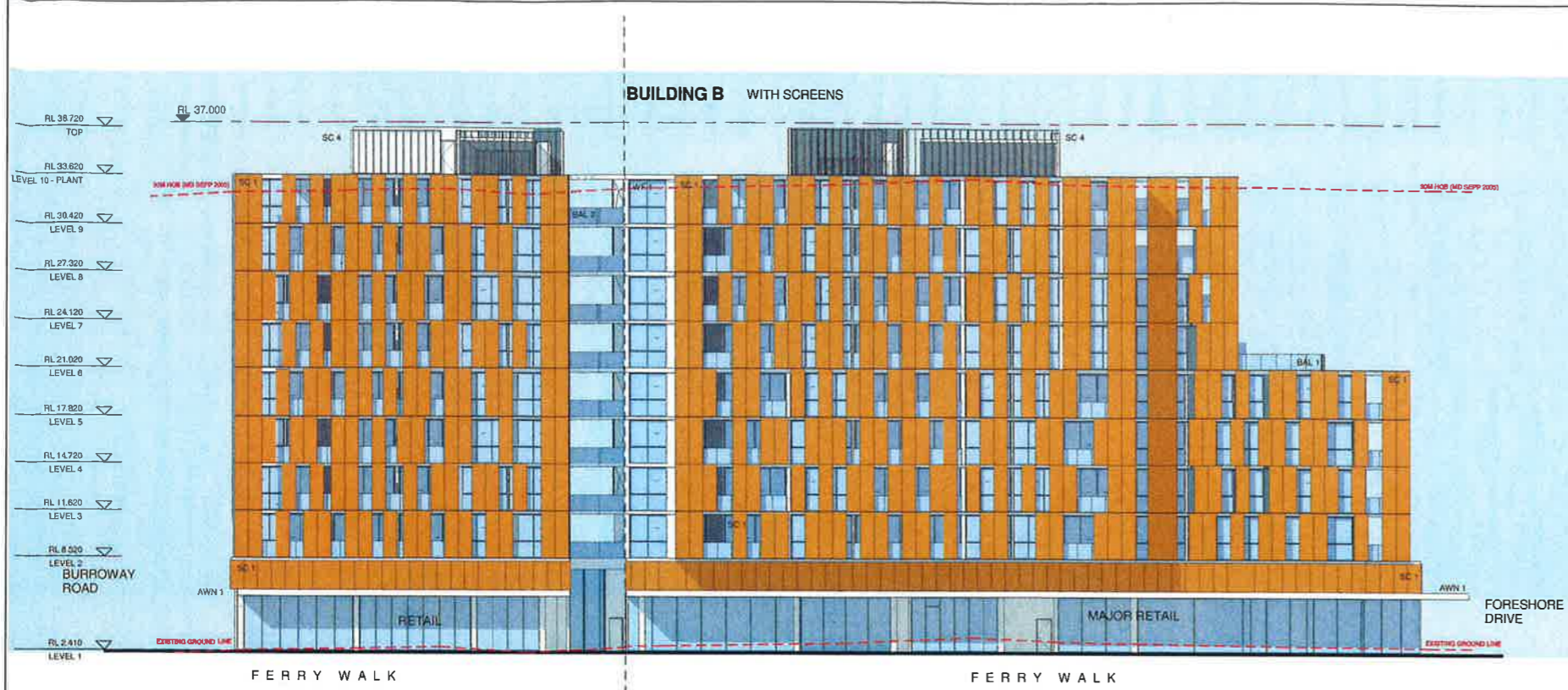
REV	DESCRIPTION OF CHANGE	DATE
H	DRAWING	02/02/14
I	DA REVISION	28/10/14
J	ISSUE	01/05/15
K	SCREENS TO RETAIL LEVEL HIDDEN FOR CLARITY. NOTES AMENDED	01/05/15

**LEGEND**

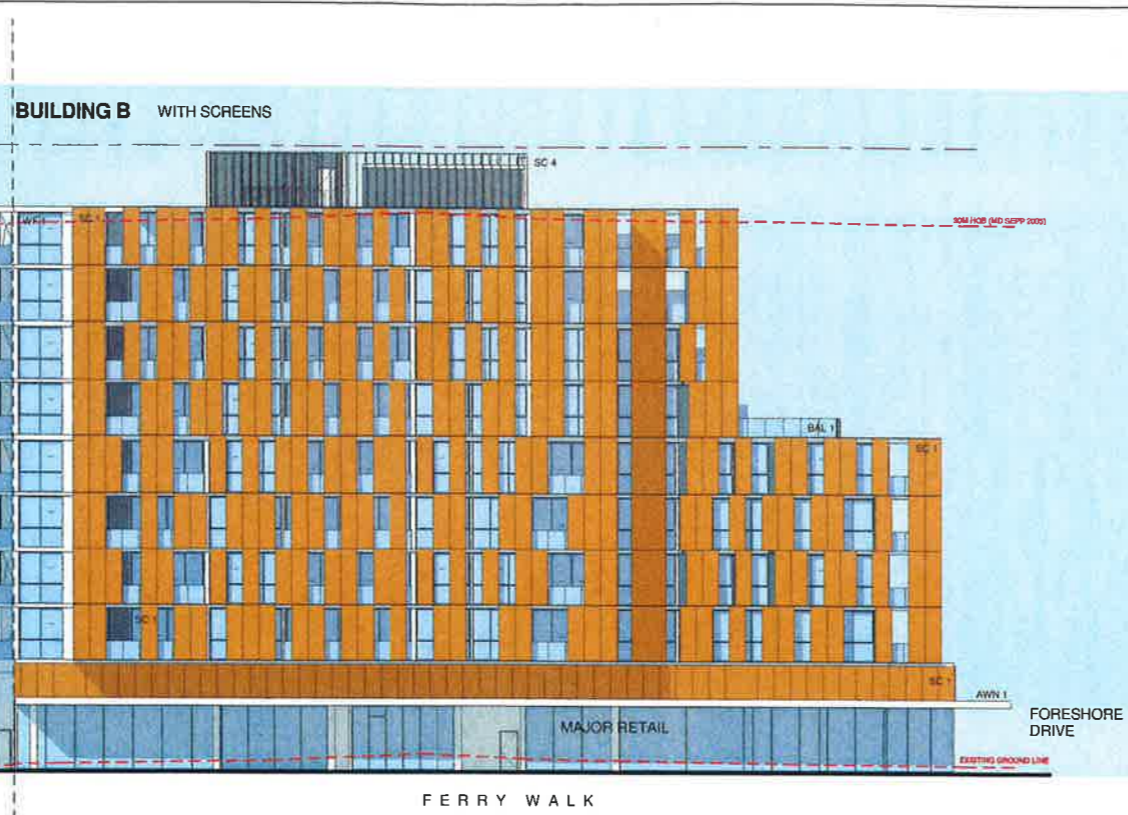
- AWN 1 ALUMINIUM SOFFIT AWNING SILVER
- AWN 2 SUN SHADING DEVICE TO CHILD CARE CENTRE
- BAL 1 OPAQUE WHITE GLASS BALUSTRADE
- BAL 2 CLEAR GLASS BALUSTRADE
- BAL 4 CHILDPROOF FRAMELESS GLASS BALUSTRADE TO CHILD CARE CENTRE
- P 1 PAINT FINISH - DULUX P1461Q 'GREY PEBBLE' QUARTER STR
- PC 1 GROUVED PRECAST CONCRETE PANEL PAINT FINISH
- PC 3 CONCRETE PAINT FINISH TO MATCH WF1
- SC 1 PERFORATED ANODISED ALUMINIUM VERTICAL LOUVERED SCREEN, ANODISED ALUMINIUM UNIVERSAL ANODISERS ORIENTAL GOLD
- SC 2 PERFORATED VERTICAL LOUVERED SCREEN ANODISED ALUMINIUM FINISH
- SC 3 CHILD CARE CENTRE PERIMETER SCREEN
- SC 4 ROOF PLANT SCREEN
- WF 1 WINDOW FRAMES - INTERPON 62015 ULTRAVA ASTEROID PEARL MATT YY270A



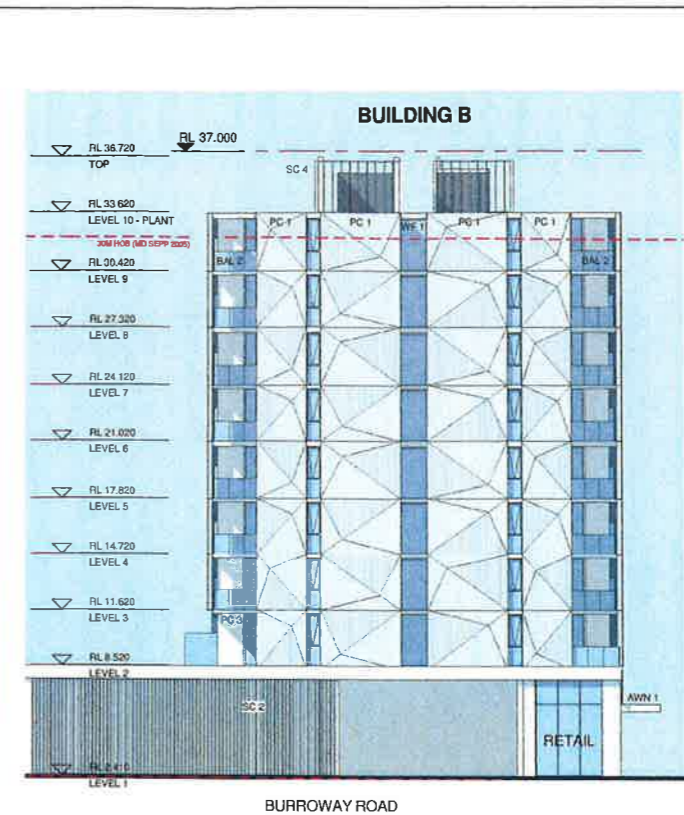
PROJECT MANAGER <b>IONIC MANAGEMENT PTY. LTD</b>	<b>ionic</b>
CLIENT <b>PAYCE CONSOLIDATED LTD</b>	<b>PAYCE</b>
ARCHITECTS <b>stanisic architects</b>	<b>HDR   RICE DAUBNEY</b>
PROJECT <b>SOPA "DOCK" 1 BURROWAY RD</b>	PROJECT NUMBER: 14 003
DRAWING TITLE <b>TRUE ELEVATIONS ELEVATION BUILDING B WEST &amp; NORTH</b>	DRAWING NUMBER: DA 1552
SCALE: ORIGINAL SIZE A1 <b>1 : 200</b>	CHECKED: JN
PROJECT NUMBER: 14 003	ISSUE: K



1 ELEVATION  
B1 - EAST ELEVATION 1 : 200



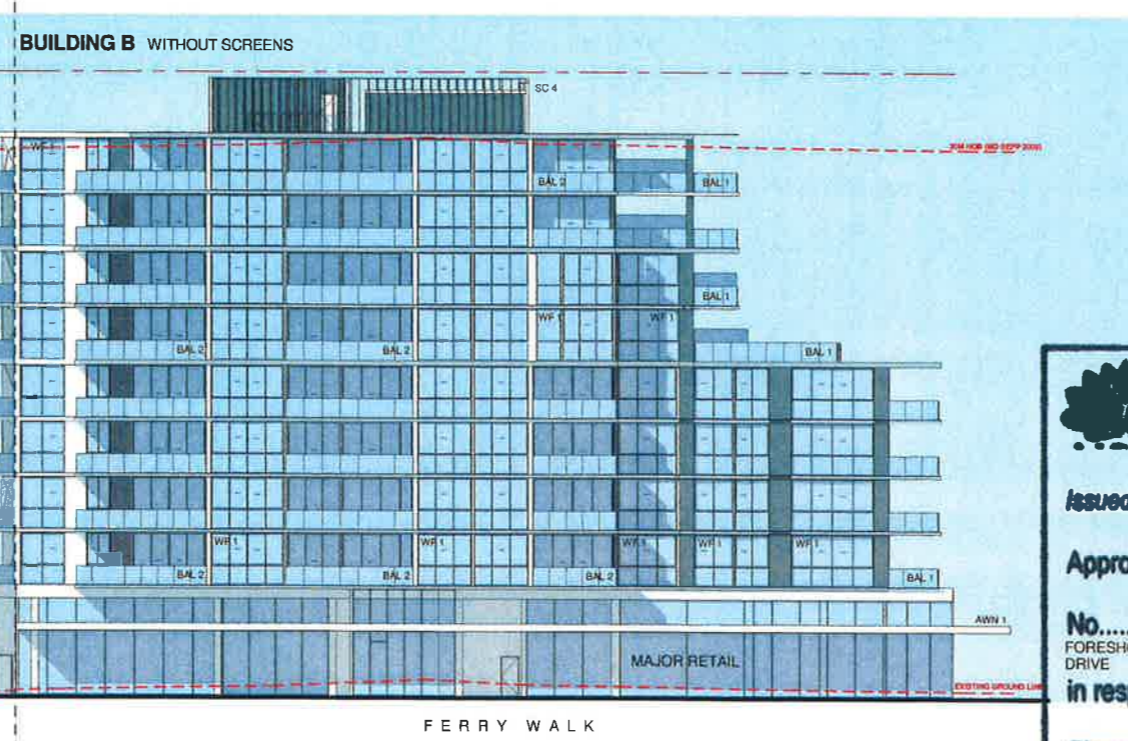
2 ELEVATION  
B2 - EAST ELEVATION 1 : 200



3 ELEVATION  
B2 - SOUTH ELEVATION 1 : 200



4 ELEVATION  
B1 - EAST ELEVATION 1 : 200



5 ELEVATION  
B2 - EAST ELEVATION 1 : 200

stansic architects is the owner of the copyright subsisting in these drawings, plans, designs and specifications. They must not be used, reproduced or copied, in whole or in part, nor may the information, ideas and concepts therein contained (which are confidential to stansic architects) be disclosed to any person without the prior written consent of that company.

REV	DESCRIPTION OF CHANGE	DATE
H	DA REVISION	05.02.14
I	DA REVISION	26.10.14
J	ISSUE	01.05.15
K	SCREENS TO RETAIL LEVEL HIDDEN FOR CLARITY. NOTES AMENDED	07.05.15

**LEGEND**

- AWN 1 ALUMINIUM SOFFIT AWNING SILVER
- AWN 2 SUN SHADING DEVICE TO CHILD CARE CENTRE OUTDOOR PLAY AREA
- BAL 1 OPAQUE WHITE GLASS BALUSTRADE
- BAL 2 CLEAR GLASS BALUSTRADE
- BAL 4 CHILDPROOF FRAMELESS GLASS BALUSTRADE TO CHILD CARE CENTRE
- PC 1 PAINT FINISH - DULUX P14010 'GREY PEBBLE' QUARTER STN
- PC 3 GROOVED PRECAST CONCRETE PANEL PAINT FINISH
- SC 1 CONCRETE PAINT FINISH TO MATCH WF 1 PERFORATED ANODISED ALUMINIUM VERTICAL LOUVERED SCREEN ANODISED ALUMINIUM UNIVERSAL ANODISERS ORIENTAL GOLD
- SC 2 PERFORATED VERTICAL LOUVERED SCREEN ANODISED ALUMINIUM FINISH
- SC 3 CHILD CARE CENTRE PERIMETER SCREEN
- SC 4 ROOF PLANT SCREEN
- WF 1 WINDOW FRAMES - INTERPON 02015 ULTRIVA ASTEROID PEARL MATT YV270A



**NSW GOVERNMENT Planning**

Issued under the Environmental Planning and Assessment Act 1979

Approved Section 96 (1A) (1) (2) Modification Application

No. 2 granted on the 23 July 2015

in respect to MP 5506387

Signed: [Signature]

Sheet No. 29 of 43

**PROJECT MANAGER**  
IONIC MANAGEMENT PTY. LTD

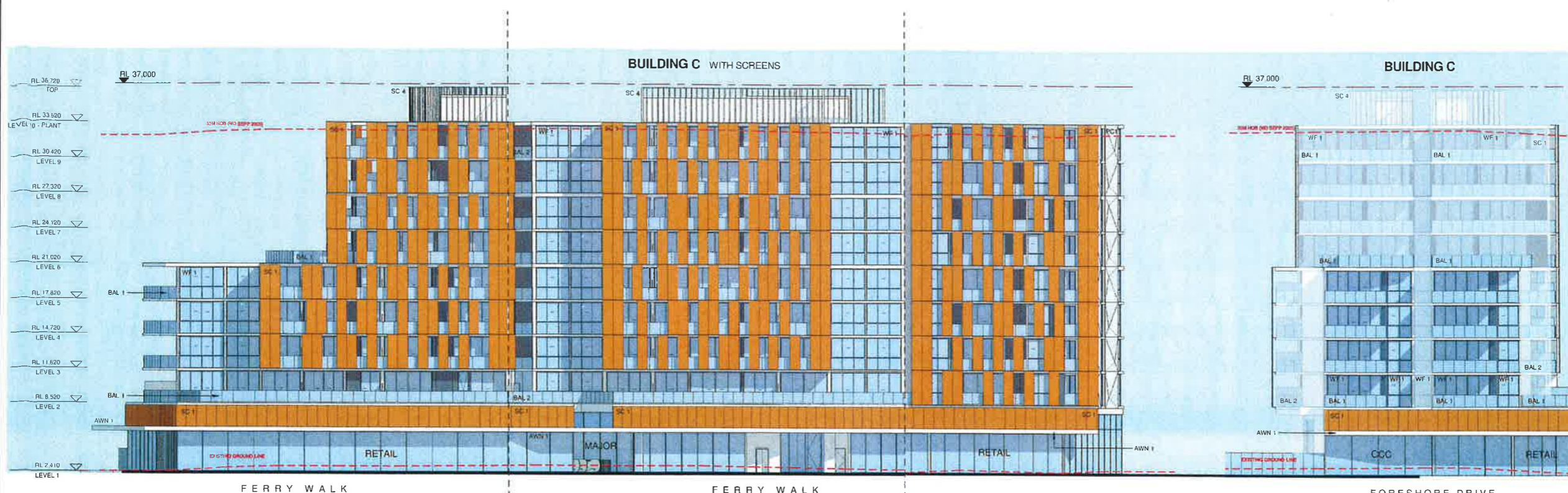
**CLIENT**  
PAYCE CONSOLIDATED LTD

**ARCHITECTS**  
stansic architects

**PROJECT**  
SOPA "DOCK" 1 BURROWAY RD

**DRAWING TITLE**  
TRUE ELEVATIONS ELEVATION BUILDING B EAST & SOUTH

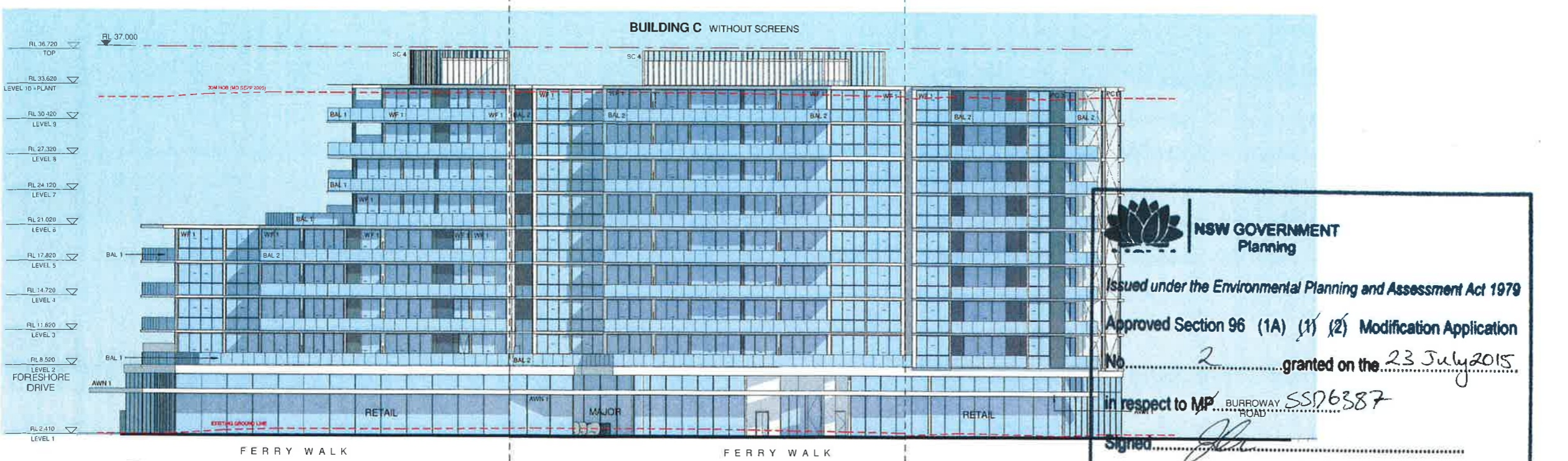
SCALE (ORIGINAL SIZE)	1 : 200	CHECKED	JN
PROJECT NUMBER	DA 1553	ISSUE	K



1 ELEVATION  
C1 - WEST ELEVATION 1 : 200

2 ELEVATION  
C2 - WEST ELEVATION 1 : 200

3 ELEVATION  
C1 - NORTH ELEVATION 1 : 200



4 ELEVATION  
C1 - WEST ELEVATION 1 : 200

5 ELEVATION  
C2 - WEST ELEVATION 1 : 200

STANISIC ARCHITECTS IS THE OWNER OF THE COPYRIGHT IN THESE DRAWINGS, PLANS, DESIGNS AND SPECIFICATIONS. THEY MUST NOT BE USED, REPRODUCED OR COPIED, IN WHOLE OR IN PART, FOR ANY OTHER PROJECT WITHOUT THE WRITTEN CONSENT OF STANISIC ARCHITECTS.

REV	DESCRIPTION OF CHANGE	DATE
H	DA REVISION	05.08.14
I	DA REVISION	22.10.14
J	SUB ISSUE	01.06.15
K	SCREENS TO RETAIL LEVEL HIDDEN FOR CLARITY. NOTES AMENDED	07.05.15

- LEGEND**
- AWN 1 ALUMINIUM SOFFIT AWNING SILVER
  - AWN 2 SUN SHADING DEVICE TO CHILD CARE CENTRE OUTDOOR PLAY AREA
  - BAL 1 OPAQUE WHITE GLASS BALUSTRADE
  - BAL 2 CLEAR GLASS BALUSTRADE
  - BAL 4 CHILD PROOF FRAMELESS GLASS BALUSTRADE TO CHILD CARE CENTRE
  - P 1 PAINT FINISH - DULUX P14B10 'GREY PEBBLE' QUARTER STA
  - PC 1 GROOVED PRECAST CONCRETE PANEL PAINT FINISH
  - PC 3 CONCRETE PAINT FINISH TO MATCH WF1
  - SC 1 PERFORATED ANODISED ALUMINIUM VERTICAL LOUVRE SCREEN ANODISED ALUMINIUM UNIVERSAL ANODISERS ORIENTAL COL 07
  - SC 2 PERFORATED VERTICAL LOUVRE SCREEN ANODISED ALUMINIUM FINISH
  - SC 3 CHILD CARE CENTRE PERIMETER SCREEN
  - SC 4 ROOF PLANT SCREEN
  - WF 1 WINDOW FRAMES - INTERPON 02015 ULTRIVA ASTEROID PEARL MATT Y270A



**NSW GOVERNMENT Planning**

Issued under the Environmental Planning and Assessment Act 1979

Approved Section 96 (1A) (1) (2) Modification Application

No. 2 granted on the 23 July 2015.

in respect to MP BURROWAY ROAD S576387

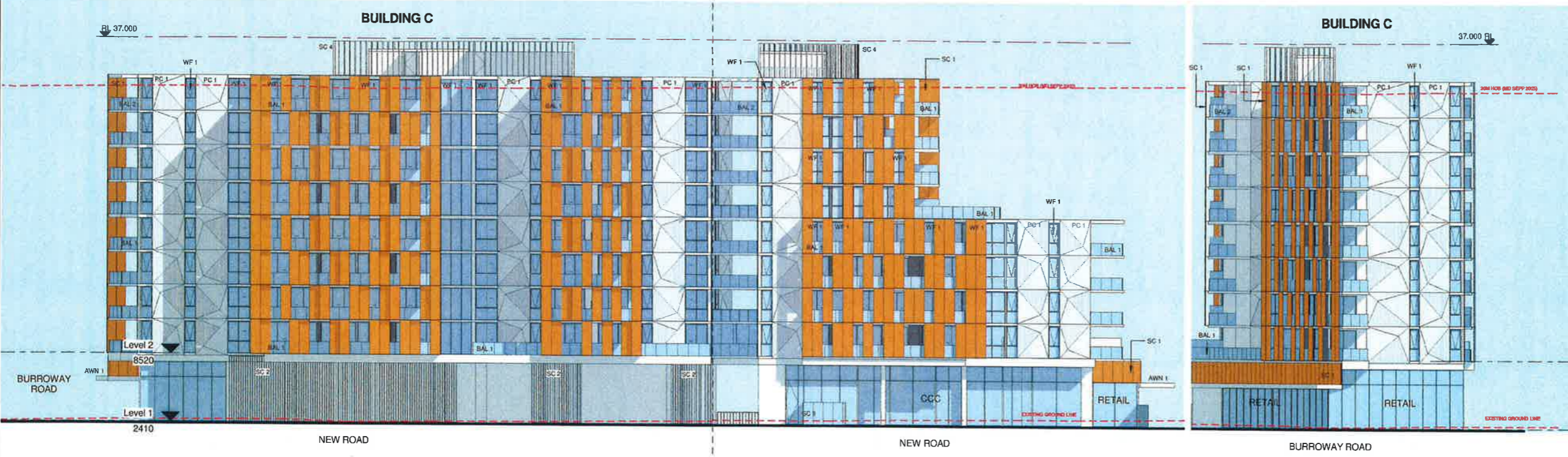
Signed: *[Signature]*

Sheet No. 30 of 43

PROJECT MANAGER	IONIC MANAGEMENT PTY. LTD	
LEVEL 37, CHAPLEY TOWER 2, CHAPLEY SQUARE SYDNEY 2000	PROJECT NO. 100000000	DATE: 07/05/15
CLIENT	PAYCE CONSOLIDATED LTD	
LEVEL 37, CHAPLEY TOWER 2, CHAPLEY SQUARE SYDNEY 2000	PROJECT NO. 100000000	DATE: 07/05/15
ARCHITECTS	stanisic architects	
LEVEL 2, 243 LIVEPOOL STREET, EAST SYDNEY NSW 2010	T 61 2 9558 2288 E info@stanisic.com.au ABN 11002633461	
PROJECT	HDR   RICE DAUBNEY	
PROJECT	SOPA "DOCK" 1 BURROWAY RD WEST MORTH POINT, THE WHARF SITE SYDNEY OLYMPIC PARK	
DRAWING TITLE	TRUE ELEVATIONS ELEVATION BUILDING C WEST & NORTH	
SCALE: NOMINAL SIZE A1	1 : 200	CHECKED: JN
PROJECT NUMBER	DRAWING NUMBER	ISSUE:
14 003	DA 1554	K

STATISIC ARCHITECTS IS THE OWNER OF THE COPYRIGHT SUBSISTING IN THESE DRAWINGS, PLANS, DESIGNS AND SPECIFICATIONS. THEY MUST NOT BE REPRODUCED, COPIED, IN WHOLE OR IN PART NOR MAY THE INFORMATION, IDEAS AND CONCEPTS THEREIN BE DISCLOSED TO ANY PERSON WITHOUT THE PRIOR WRITTEN CONSENT OF THAT COMPANY.

REV	DESCRIPTION OF CHANGE	DATE
H	DA REVISION	05.08.14
I	DA REVISION	28.10.14
J	S&B ISSUE	01.05.15



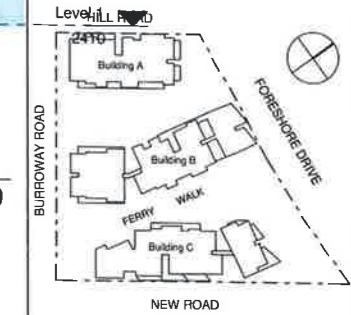
1 ELEVATION C1 - EAST ELEVATION 1 : 200

2 ELEVATION C2 - EAST ELEVATION 1 : 200

3 ELEVATION C1 - SOUTH ELEVATION 1 : 200

**LEGEND**

- AWN 1 ALUMINIUM SOFFIT AWNING SILVER
- AWN 2 SUN SHADING DEVICE TO CHILD CARE CENTRE OUTDOOR PLAY AREA
- BAL 1 OPAQUE WHITE GLASS BALUSTRADE
- BAL 2 CLEAR GLASS BALUSTRADE
- BAL 4 CHILDPROOF FRAMELESS GLASS BALUSTRADE TO CHILD CARE CENTRE
- PC 1 PAINT FINISH - DULUX P14B1Q GREY PEBBLE QUANTIFIER 5TH
- PC 2 GROOVED PRECAST CONCRETE PANEL PAINT FINISH
- PC 3 CONCRETE PAINT FINISH TO MATCH WF1
- SC 1 PERFORATED ANODISED ALUMINIUM VERTICAL LOUVERED SCREEN, ANODISED ALUMINIUM
- SC 2 PERFORATED VERTICAL LOUVERED SCREEN ANODISED ALUMINIUM FINISH
- SC 3 PERFORATED ALUMINIUM FINISH
- SC 4 PERFORATED CENTRE PERIMETER SCREEN
- WF 1 WINDOW FRAMES - RITERPON D2015 ULTRAVA ASTEROID PEARL MATT Y270A



**NSW GOVERNMENT Planning**

Issued under the Environmental Planning and Assessment Act 1979

Approved Section 98 (1A) (1) (2) Modification Application

No. 2 granted on the 23 July 2015

in respect to MP SSD 6387

Signed [Signature]

Sheet No. 31 of 43

PROJECT MANAGER  
**IONIC MANAGEMENT PTY. LTD**

LEVEL 37, CHIFLEY TOWER 2 CHIFLEY SQUARE SYDNEY 2000 P: 02 8313 0240 F: 02 8360 2299 ionic@ionic.net.au

CLIENT  
**PAYCE CONSOLIDATED LTD**

LEVEL 37, CHIFLEY TOWER 2 CHIFLEY SQUARE SYDNEY 2000 P: 02 8360 2200 F: 02 8360 2299 msp@payce.com.au

ARCHITECTS  
**stansic architects**

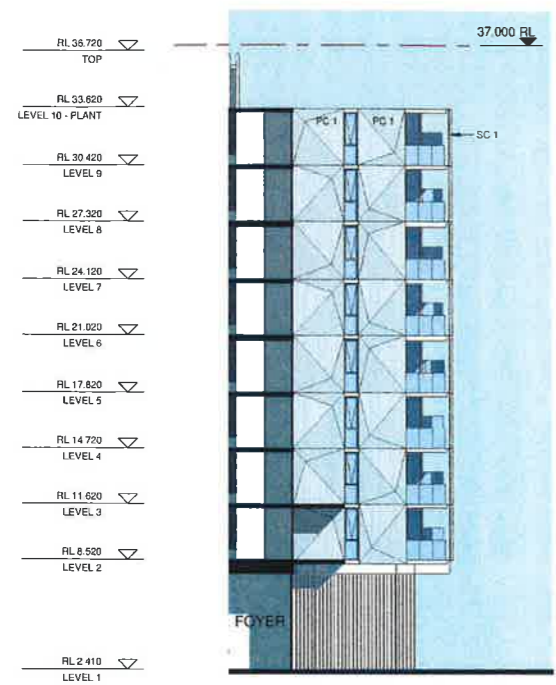
Level 2, 243 Liverpool Street, East Sydney NSW 2010  
T: (61 2) 9358 2568  
E: info@stansic.com.au  
ABN 1106233481

**HDR | RICE DAUBNEY**

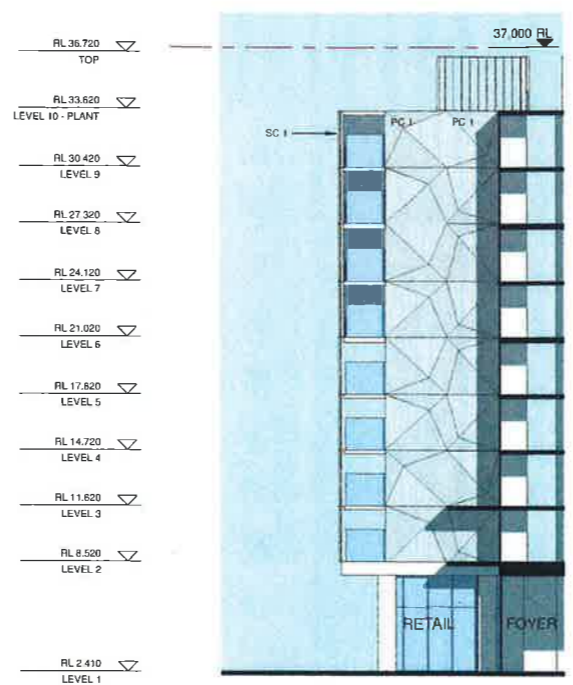
PROJECT  
**SOPA "DOCK" 1 BURROWAY RD**  
WENTWORTH POINT, THE WHARF SITE SYDNEY OLYMPIC PARK

DRAWING TITLE  
**TRUE ELEVATIONS ELEVATION BUILDING C EAST AND SOUTH**

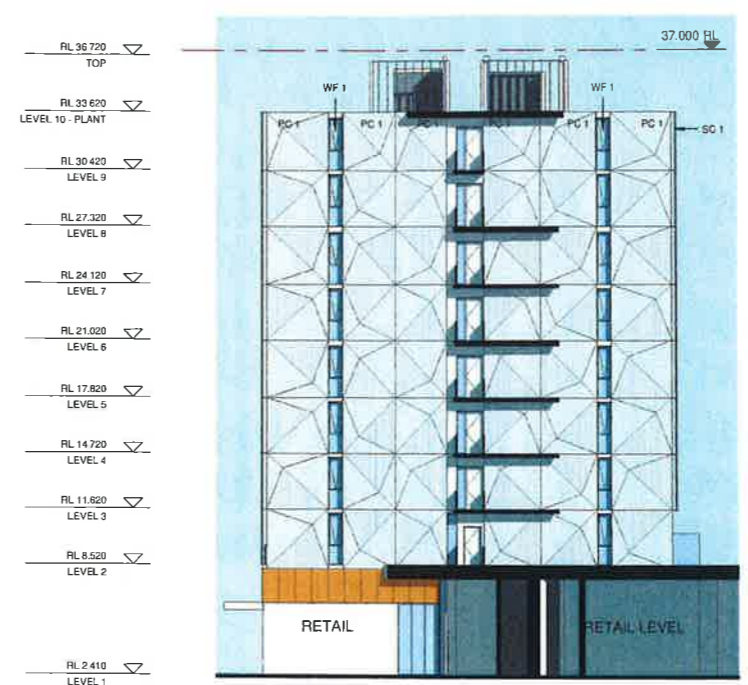
SCALE: (ORIGINAL SIZE A1)	CHECKED	
1 : 200	JN	
PROJECT NUMBER	DRAWING NUMBER	RELE:
14 003	DA 1555	J



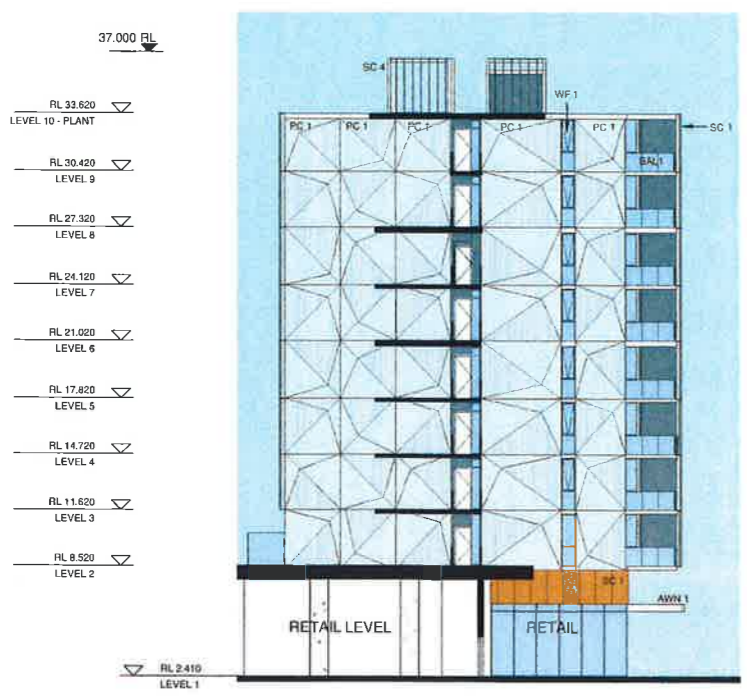
1 AA1 ELEVATION SECTION  
1 : 200



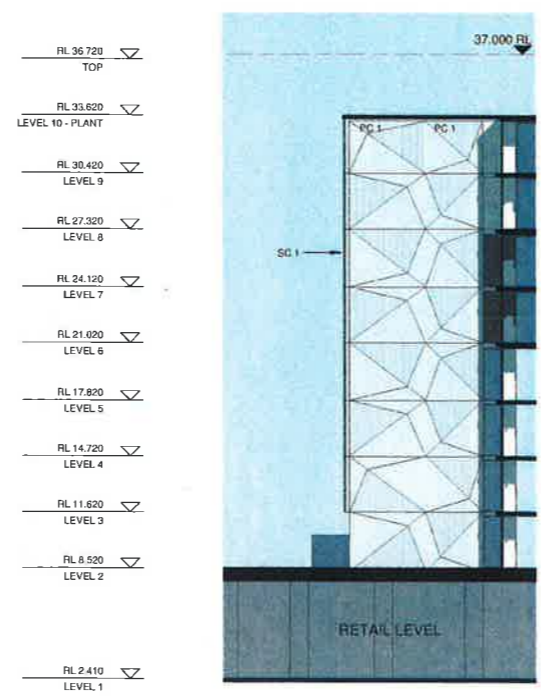
2 AA2 ELEVATION SECTION  
1 : 200



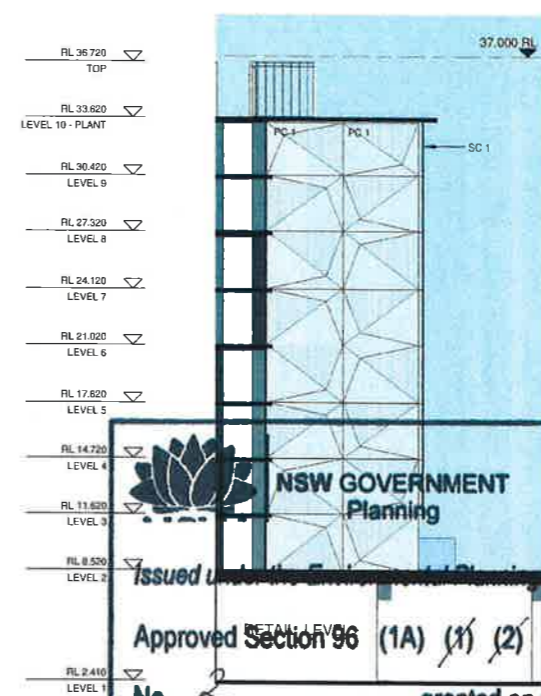
3 BB1 ELEVATION SECTION  
1 : 200



4 BB2 ELEVATION SECTION  
1 : 200



5 BB3 ELEVATION SECTION  
1 : 200



6 BB4 ELEVATION SECTION  
1 : 200

NSW GOVERNMENT Planning

Issued under the Environmental Planning and Assessment Act 1979

Approved Section 96 (1A) (1) (2) Modification Application

No. 2 granted on the 23 July 2015

in respect of SSD 6387

Signed [Signature]

Sheet No. 32 of 43

NORTH POINT

stansic architects is the owner of the copyright subsisting in these drawings, plans, designs and specifications. They must not be used, reproduced or copied, in whole or in part, nor may the information, ideas and concepts there contained (which are confidential to stansic architects) be disclosed to any person without the prior written consent of that company.

REV	DESCRIPTION OF CHANGE	DATE
H	DA REVISION	05.08.14
I	DA REVISION	28.10.14
J	SB ISSUE	01.05.15

LEGEND

AWN 1	ALUMINIUM SOFFIT AWNING SILVER
AWN 2	SUN SHADING DEVICE TO CHILD CARE CENTRE OUTDOOR PLAY AREA
BAL 1	OPAQUE WHITE GLASS BALUSTRADE
BAL 2	CLEAR GLASS BALUSTRADE
BAL 4	CHILDPROOF FRAMELESS GLASS BALUSTRADE TO CHILD CARE CENTRE
P 1	PAINT FINISH - DULUX P14B10 'GREY PEBBLE' QUARTER STR GROOVED PRECAST CONCRETE PANEL. PAINT FINISH
PC 3	CONCRETE. PAINT FINISH TO MATCH WF1
SC 1	PERFORATED ANODISED ALUMINIUM VERTICAL LOUVERED SCREEN. ANODISED ALUMINIUM UNIVERSAL ANODISERS 'ORIENTAL GOLD'
SC 2	PERFORATED VERTICAL LOUVERED SCREEN. ANODISED ALUMINIUM FINISH
SC 4	CHILD-CARE CENTRE PERIMETER SCREEN
WF 1	ROOF PLANT SCREEN WINDOW FRAMES - INTERPON 02015 ULTRIVA ASTEROID PEARL MATT Y270A



PROJECT MANAGER  
**IONIC MANAGEMENT PTY. LTD**

LEVEL 37, CHIFLEY TOWER 2 CHIFLEY SQUARE SYDNEY 2000 P: 62 451 13 0240 M: 02 9542 2299 ionic@ionic.net.au

CLIENT  
**PAYCE CONSOLIDATED LTD**

LEVEL 37, CHIFLEY TOWER 2 CHIFLEY SQUARE SYDNEY 2000 P: 62 8006 7500 F: 62 8006 2299 msp@payce.com.au

ARCHITECTS  
**stansic architects**  
Level 2 243 Liverpool Street East Sydney NSW 2010 T: (61 2) 9356 2588 E: info@stansic.com.au ABN: 11 006633461

**HDR** | RICE DAUBNEY

PROJECT  
**"DOCK" 1 BURROWAY RD**  
WENTWORTH POINT, THE WHARF SITE SYDNEY OLYMPIC PARK

DRAWING TITLE  
**TRUE ELEVATIONS ELEVATION BUILDING CUTS**

SCALE (ORIGINAL SIZE: A1) 1 : 200 (CHECKED) JN

PROJECT NUMBER 14 003 DRAWING NUMBER DA 1556 ISSUE J