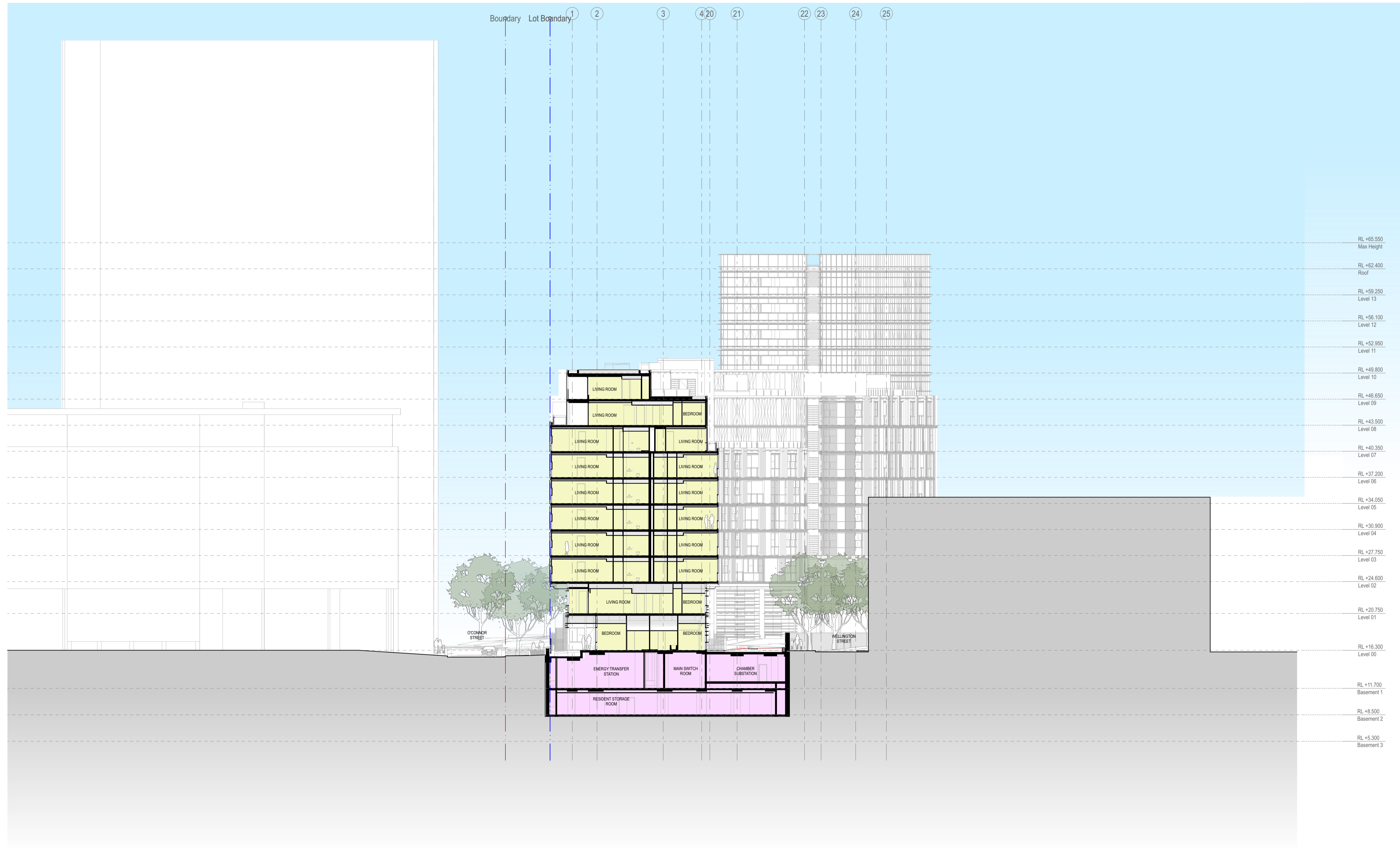


**GENERAL NOTES**  
 ALL DIMENSIONS AND EXISTING CONDITIONS SHALL BE CHECKED AND VERIFIED BY THE CONTRACTOR BEFORE PROCEEDING WITH THE WORK  
 ALL LEVELS RELATIVE TO AUSTRALIAN HEIGHT DATUM  
 DO NOT SCALE DRAWINGS. USE FIGURED DIMENSIONS ONLY



**LEGEND**

S	STUDIO
1B	1 BED
1BM	1 BED + MEDIA NOOK
1BS	1 BED + STUDY
2B	2 BED
2BM	2 BED + MEDIA NOOK
2BK	2 BED DUAL KEY
2BT	2 BED 2 STOREY TERRACE
3B	3 BED
3BM	3 BED + MEDIA NOOK
3BS	3 BED + STUDY
4B	4 BED
	RETAIL + NON-RESIDENTIAL
	CHILDCARE
	EXTERNAL AREA
	COURTYARD/BALCONY/WINTER GARDEN

- 2 HOURS OF SUNLIGHT ACCESS
- NATURAL VENTILATION (NV)
- WIDE FRONTAGE NATURALLY VENTILATED
- ASSISTED VENTILATION
- SOUTH FACING APARTMENT
- ADAPTABLE APARTMENT
- LOBBY DUCTED VENTILATION
- LOBBY ASSIST VENT. SLICE
- ASSISTED VENTILATION
- GOOD VENTILATION
- NATURAL VENTILATION
- LOBBY CROSS VENTILATION

- FAC01** Anodised aluminium Curtain Wall System with integrated operable windows with aluminium clip-on custom profiled extrusions
- FAC02** Anodised aluminium Window Wall System with integrated operable windows and door systems (allow for 50/50 split between sliding and bi-fold functionality). Finestration to facade system being anodised aluminium operable bi-fold perforated sunshade screens (allow for floor to floor coverage)
- FAC03** Anodised aluminium Window Wall System with integrated operable windows and door systems (allow for 50/50 split between sliding and bi-fold functionality).
- FAC04** Terracotta cladding (allow for minimum 1000 wide module)
- FAC05** Anodised aluminium sliding sunshade screen panels with battens at typically 100mm CC, 50mm SHS profile to framing and battens
- FAC06** Anodised aluminium Curtain Wall System with integrated operable windows and door systems (allow for 50/50 split between sliding and bi-fold functionality) with aluminium clip-on custom profiled extrusions
- FAC07** Anodised aluminium Curtain Wall System with integrated operable windows (allow for panel lift type e.g. 'Reveal') and door systems (allow for full height pivot functionality). Aluminium clip-on custom profiled extrusions to facade.
- FAC08** Full height aluminium clip-on custom profiled extrusions
- FAC09** Brick Type 1 colour (earthly rust). Bowral pressed or similar. Final selection as per materials board.
- FAC10** Rendered Masonry with integrated anodised aluminium window systems
- FAC11** Balustrade. Frameless glazing with powder coated 8mm plate aluminium portal framing. Glazing is not captured all round
- FAC12** Profiled anodised aluminium vertical batten using 'clip-on' fixing as noted in elevation (to stairs)
- FAC13** Fixed horizontal glass louvers
- BS01** Stainless steel Boltact
- BYR1** Stainless steel Bicycle Rail
- DG1** Decomposed Granite Gravel
- DG2** Decorative Gravel
- HR2** Stainless steel Handrail
- LPI** Lighting 45ip
- P1** Paving Type 1 City of Sydney Precast Paving
- P2** Paving Type 2 Precast Concrete Paving with Granite stone inlay
- P3** Paving Type 3 Exposed aggregate Concrete path
- P4** Paving Type 4 Exposed aggregate Concrete path
- P5** Paving Type 5 Precast paving to traffic areas
- P6** Paving Type 6 Brick Paving
- PIT** Proposed Service Pits
- RW1** Brick base with a Timber capping Retaining wall
- RW2** Brick base with a Precast concrete capping Retaining wall
- RW3** Insitu concrete Retaining wall
- RW4** Heritage Interpretation wall
- ST1** Corten Steel Edging
- TD1** Timber Bench Seats
- TD2** Timber Composite vertical batten screen
- TD3** Timber Decking
- TD4** CCTV Camera

REV.	DATE	DESCRIPTION	BY
04	02/12/2016	ISSUED FOR S96 APPROVAL	FJMT
03	21/06/2016	REVISED SSDA	FJMT
02	03/07/2015	REFER REVISION CLOUDS	FJMT
01	24/10/2014	ISSUED FOR SSDA APPROVAL	FJMT

CLIENT  
**FRASERS PROPERTY**  
 Suite 11, Lumiere Commercial,  
 Level 12, 101 Bathurst Street,  
 Sydney, NSW, 2000, Australia

ARCHITECT  
**fjmt**  
 francis-jones morehen thorp  
 NON-REGISTERED ARCHITECT: RICHARD FRANCIS-JONES (REG NO 53011)  
 SYDNEY  
 Level 5, 70 King Street  
 Sydney NSW 2000 Australia  
 T +61 2 9251 7077  
 F +61 2 9251 7072  
 E fjmt@fjmt.com.au  
 W www.fjmt.com.au

PROJECT  
**Central Park Block 11**  
 O'Connor Street, Chippendale  
 Sydney  
 Frasers Broadway

TITLE  
**SECTIONS**  
 Section

SCALE	1:250 @ A1	DRAWN	FJMT	PROJECT CODE
DATE	24/10/2014	APPROVED	SB	<b>FB11</b>
SHEET NO.	<b>SSDA-11-301</b>		REVISION	<b>04</b>

WHEN PRINTED AT 50% ON A3 THE SCALE IS 1:500  
**Issued for Approval**

**01** SECTION Grid A-B  
 1:250