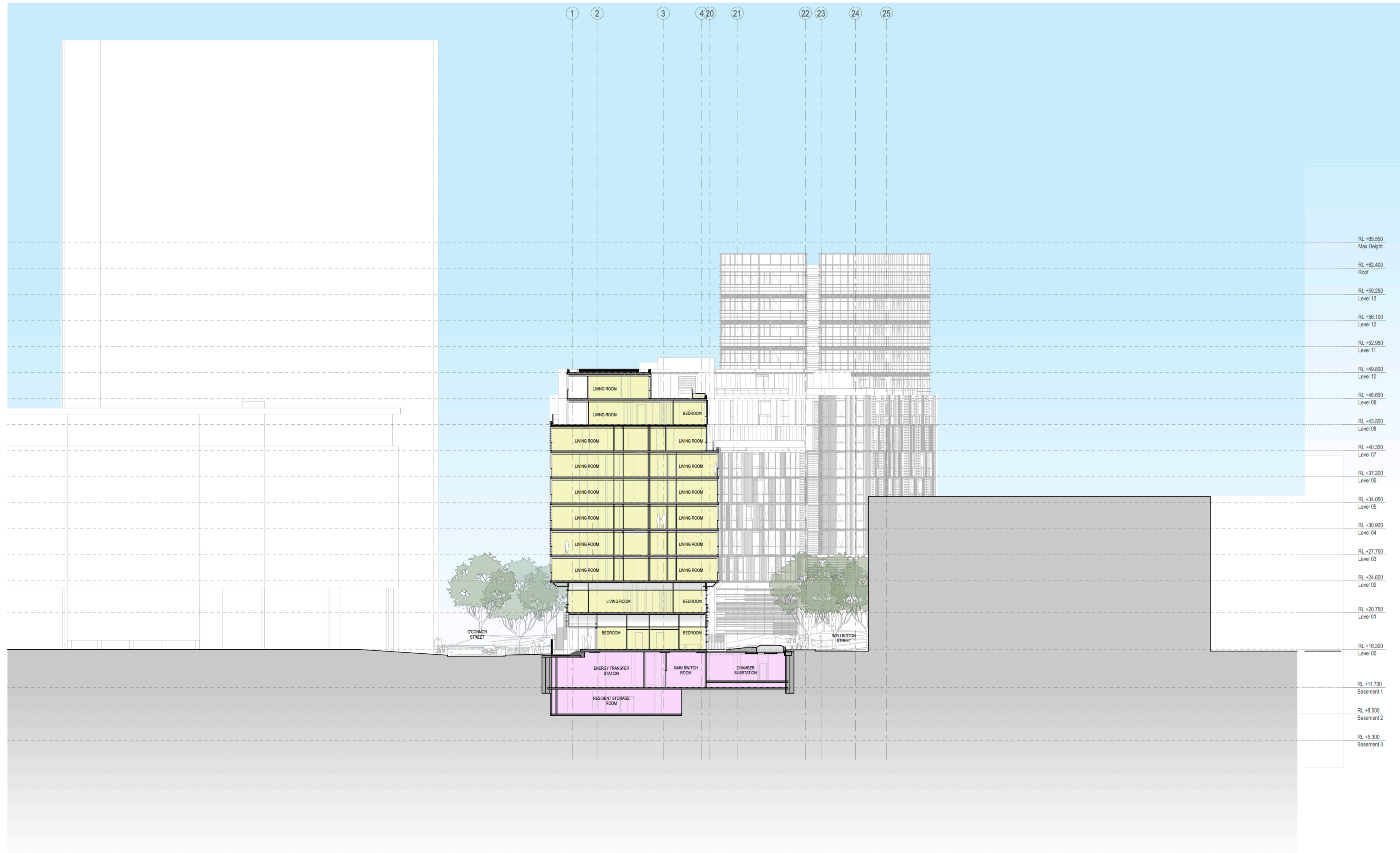


GENERAL NOTES
 ALL DIMENSIONS AND EXISTING CONDITIONS SHALL BE CHECKED AND VERIFIED BY THE CONTRACTOR BEFORE PROCEEDING WITH THE WORK
 ALL LEVELS RELATIVE TO AUSTRALIAN HEIGHT DATUM
 DO NOT SCALE DRAWINGS. USE FIGURED DIMENSIONS ONLY



LEGEND

S	STUDIO
1B	1 BED
1BM	1 BED + MEDIA NOOK
1BS	1 BED + STUDY
2B	2 BED
2BM	2 BED + MEDIA NOOK
2BS	2 BED + STUDY
2BK	2 BED DUAL KEY
2BT	2 BED 2 STOREY TERRACE
3B	3 BED
3BM	3 BED + MEDIA NOOK
3BS	3 BED + STUDY
3BK	3 BED DUAL KEY
	RETAIL + NON-RESIDENTIAL
	CHILDCARE
	EXTERNAL AREA
	COURTYARD/BALCONY/WINTER-GARDEN

- 2 HOURS OF SUNLIGHT ACCESS
- NATURAL VENTILATION (NV)
- WIDE FRONTAGE NATURALLY VENTILATED
- ASSISTED VENTILATION
- SOUTH FACING APARTMENT
- ADAPTABLE APARTMENT
- LOBBY DUGLED VENTILATION
- APARTMENT ASSIST VENT BLUPE
- ASSISTED VENTILATION
- GOOD VENTILATION
- NATURAL VENTILATION
- LOBBY CROSS VENTILATION

- FAC01** Anodised aluminium Curtain Wall System with integrated operable windows (allow for euro style multifunction hardware) clip-on custom profiled extrusions
- FAC02** Anodised aluminium Window Wall System with integrated operable windows (allow for euro style multifunction hardware) and door systems (allow for 50/50 split between sliding and bi-fold functionality). Finestration to facade system being anodised aluminium operable bi-fold perforated sunshade screens (allow for floor to floor coverage)
- FAC03** Anodised aluminium Window Wall System with integrated operable windows (allow for euro style multifunction hardware) and door systems (allow for 50/50 split between sliding and bi-fold functionality). Finestration to facade system being anodised aluminium operable bi-fold perforated sunshade screens (allow for floor to floor coverage)
- FAC04** Terrace cladding (allow for minimum 1200 wide module)
- FAC05** Anodised aluminium sliding sunshade screen panels with battens at typically 100mm CC, 50mm SHS profile to framing and battens
- FAC06** Anodised aluminium Window Wall System with integrated operable windows (allow for euro style multifunction hardware) and door systems (allow for 50/50 split between sliding and bi-fold functionality). Profiled timber battens using "clip-on" fixing as noted in elevation.
- FAC07** Anodised aluminium Window Wall System with integrated operable windows (allow for panel fit type e.g. "Rehita") and door systems (allow for full height panel functionality). Finestration to facade system being profiled timber battens using "clip-on" fixing as noted in elevation.
- FAC08** Full height timber batten screens
- FAC09** Brick Type 1 colour (earth/rust). Bowral pressed or similar. Final selection as per materials board
- FAC10** Rendered Masonry with integrated anodised aluminium window systems
- FAC11** Balustrade, Frameless glazing with powder coated 6mm plate aluminium portal framing. Glazing is not captured all round
- FAC12** Profiled anodised aluminium vertical batten using "clip-on" fixing as noted in elevation.
- BY01** Stainless steel Bolted
- BYR1** Stainless steel Bicycle Rail
- DG1** Decomposed Granite Gravel
- DG2** Decorative Gravel
- HR1** Stainless steel Handrail
- LP1** Lighting strip
- P1** Paving Type 1 City of Sydney Precast Paving
- P2** Precast Concrete Paving with Granite stone inlay
- P3** Paving Type 3 Granite Slabs (to parking bays)
- P4** Paving Type 4 Exposed Aggregate Concrete path
- P5** Paving Type 5 Precast paving to traffic areas
- P6** Paving Type 6 Brick Paving
- PIT** Proposed Service Pits
- RW1** Brick base with a Timber capping Retaining wall
- RW2** Brick base with a Precast concrete capping Retaining wall
- RW3** In situ concrete Retaining wall
- RW4** Heritage Interpretation wall
- ST1** Corten Steel Edging
- TD1** Timber Bench Seats
- TD2** Timber Composite vertical batten screen
- TD3** Timber Decking

REV.	DATE	DESCRIPTION	BY
02	03/07/2015	REFER REVISION CLOUDS	FJMT
01	24/10/2014	ISSUED FOR SDA APPROVAL	FJMT

CLIENT **FRASERS PROPERTY**
 Frasers Broadway
 Suite 11, Lumiere Commercial,
 Level 12, 101 Bathurst Street,
 Sydney, NSW, 2000, Australia

ARCHITECT **fjmt**
 Level 5, 70 King Street
 Sydney NSW 2000 Australia
 T +61 2 9251 7077
 F +61 2 9251 7072
 E fjmt@fjmt.com.au
 W www.fjmt.com.au

PROJECT **Central Park Block 11**
 O'Connor Street, Chippendale
 Sydney
 Frasers Broadway

TITLE **SECTIONS**
 Section

SCALE	1:250 @ A1	DRAWN	FJMT	PROJECT CODE
DATE	24/10/2014	APPROVED	SB	FB11
SHEET NO.	SSDA-11-301		REVISION	02

WHEN PRINTED AT 50% ON A3 THE SCALE IS 1:500
Issued for Approval

01 SECTION Grid A-B
 1:250