

Maules Creek Continuation Project

Environmental Impact Statement

Attachment 10
Community Information



Application for the continuation of Maules Creek Coal Mine

JUNE 2023

Whitehaven is currently preparing a new State Significant Development (SSD) application to seek approval for the continuation of the Maules Creek Coal Mine (MCCM) within the existing mining tenement.

MCCM was originally approved in 2013 to operate under a standard 21-year mine lease with an annual production limit of 13Mtpa ROM.

MCCM has coal reserves to support 40 years of production, which was acknowledged by the NSW Government during the original approval process with the understanding a renewal of the lease would be required to facilitate ongoing mining activities beyond 2034.

As such, this application will support the continuation of operations to approximately 2043.

The application will enable increased flexibility in the mining and recovery of high-quality coal resources entirely within the existing tenements, with a modest increase to the production limit to 14 Mtpa ROM coal which will provide more optionality in managing natural fluctuations in ROM output year-to-year.

The continuation of MCCM will also support the employment of an 800-strong open cut workforce and allow the significant economic benefits our largest asset delivers in North West New South Wales (NSW) to continue.

Community and stakeholder engagement

Whitehaven Coal is committed to ongoing, comprehensive engagement with the community and relevant stakeholders throughout the process. The Project Environmental Impact Statement (EIS) will be placed on public exhibition by the Department of Planning and Environment (DPE) in due course, which will provide opportunities for questions and issues to be raised and addressed.

The comprehensive stakeholder social impact assessment will ensure there are opportunities for Aboriginal groups to be involved in the Aboriginal Cultural Heritage Assessments. Continuous engagement with the Aboriginal community will be sustained throughout the different stages of the Project.

Water pipeline

A water pipeline will connect the existing Roma/Brighton bore pump station to the approved but not yet constructed pipeline between Tarrawonga Coal Mine (TCM) and the Vickery Extension Project.

The pipeline will allow water sharing between the three operations to provide the following benefits:

- Reduce external water requirements from the Namoi River and groundwater bores.
- Maximise the utilisation of storages between operations, allowing excess water from one operation to be transferred to another operation with spare capacity.
- Allow for the utilisation of the TCM final void post closure as a water storage.
- Share water supply from bores and the Namoi River between operations for drought security, in compliance with extraction limits and Water Access License (WAL) allocations.
- Provide the opportunity to investigate beneficial reuse of the water for agricultural purposes along the pipeline route.

Protecting biodiversity

The Project's Environmental Impact Statement (EIS) will assess its potential impacts to biodiversity values.

Whitehaven Coal is committed to the post mining land use already approved in the current Project Approval. The area will revert to woodland post mining.

Baseline ecology surveys of the Project area have already commenced to ensure a comprehensive understanding of the biodiversity values within and surrounding the Project area. The surveys are used to inform mine design and likely biodiversity offsetting requirements.

Supporting global energy security and lower net global emissions

MCCM would continue to export some of the highest quality thermal coal, as well as steel making coal through to 2043 to our customers across Asia, supporting global energy security and our customers' decarbonisation ambitions.

A portion of the Project's saleable coal could be directed to steel making, consistent with the current operations, to support growing demand for steel making coal.

MCCM's high energy, low ash thermal coal is used in high efficiency, low emissions (HELE) electricity power plants delivering lower net global emissions compared to lower quality coal from elsewhere.

APPROVAL TIMELINE

Preparation and lodgement of Scoping Report (expected late 2023)

**WE ARE
HERE**

Environmental Impact Statement (EIS development)

Development Application, including the EIS, lodged with NSW Department of Planning and Environment (DPE)

DPE reviews the EIS and prepares for public exhibition

EIS placed on public exhibition comment

Whitehaven responds to submissions

DPE assess the EIS, submissions and Whitehaven responses

The NSW Minister for Planning directs the Independent Planning Commission (IPC) to undertake an Independent Assessment

The IPC makes a determination

For more information about Maules Creek, visit:

whitehavencoal.com.au/maules-creek or scan the below QR code:



Key benefits of the Maules Creek Continuation Project

Supporting the local economy

Mining creates both direct and indirect jobs. It helps to diversify the regional economy, sustain local communities, provide skilled jobs and support global energy security.



Approximately **800** jobs, predominantly locally based.



Approximately **75%** of the Maules Creek workforce is locally-based.



Continuation of **\$200m+** annual contribution to local businesses and suppliers in North West NSW.



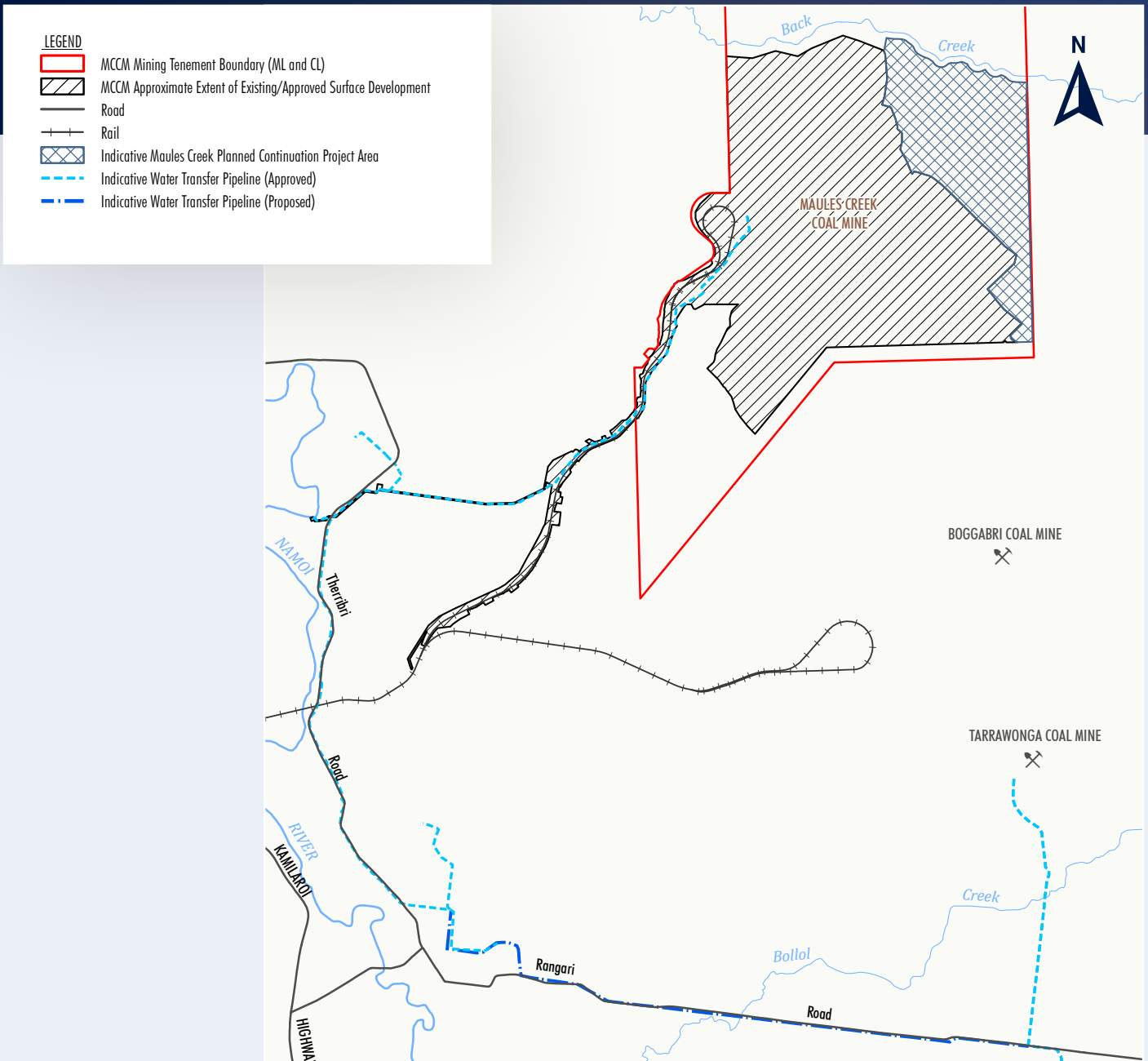
Approximately **\$160m** paid in wages annually to the Maules Creek workforce.



MCCM contributed **\$280m+** in taxes and royalties in FY22.



Approximately **20%** of the Maules Creek workforce identify as Aboriginal and/or Torres Strait Islander.



The Maules Creek Continuation Project extends to the north and east of the current mine.

Contact Information

✉ MaulesCreekCoal@whitehavencoal.com.au

☎ 1800 WHAVEN (1800 942 836)

Scan the QR code for more information about Maules Creek





Application for the continuation of Maules Creek Coal Mine

DECEMBER 2023

Whitehaven is currently preparing a new State Significant Development application to seek approval for the continuation of the Maules Creek Coal Mine (MCCM) within the existing mining and exploration tenements.

MCCM was originally approved in 2012 to operate under a standard 21-year mine lease with an annual production limit of 13 million tonnes per annum (Mtpa) of run-of-mine (ROM) coal.

MCCM has coal reserves to support 40 years of production, which was acknowledged by the New South Wales (NSW) Government during the original approval process with the understanding that a renewal of the lease would be required to facilitate ongoing mining activities beyond 2034.

As such, this application will support the continuation of operations to approximately 2045.

The application will enable increased flexibility in the mining and recovery of high-quality coal resources entirely within the existing tenements, with a modest increase to the production limit to 14 Mtpa ROM coal which will provide more optionality in managing natural fluctuations in ROM output year-to-year.

The continuation of MCCM will also support the employment of the approximately 800-strong open cut workforce and allow the significant economic benefits our largest asset delivers in north-west NSW to continue.

Community and stakeholder engagement

Whitehaven is committed to ongoing, comprehensive engagement with the community and relevant stakeholders throughout the process. The Project Environmental Impact Statement (EIS) will be placed on public exhibition by the Department of Planning and Environment (DPE) in due course, which will provide opportunities for questions and issues to be raised and addressed.

The stakeholder engagement to be undertaken for the EIS will ensure there are opportunities for Aboriginal groups to be involved in the Aboriginal Cultural Heritage Assessment. Continuous engagement with the Aboriginal community will be sustained throughout the different stages of the Project.

Key Areas of assessment in EIS

The key areas to be assessed in the EIS will include potential impact on:

- **Biodiversity**, including terrestrial and aquatic flora and fauna.
- **Water hydrology**, quality and availability of surface and groundwater.
- **Noise** including cumulative noise
- **Air quality**, including emissions and particulate matter.
- **Aboriginal Heritage**, including Aboriginal cultural values.
- **Social and economic aspects**, including livelihoods, health and wellbeing, and access and economic benefits.
- **Land**, including stability, capability and soil chemistry.
- **Amenity**, including visual amenity and vibration.

Additionally, the EIS will assess other risks and potential hazards such as flooding, bushfires and contamination, as well as impacts to private property and public land.

Water transfer pipeline

A water transfer pipeline will connect the existing MCCM Roma/Brighton bore pump station to the approved but not yet constructed pipeline between Tarrawonga Coal Mine (TCM) and the Vickery Extension Project. The pipeline will allow water sharing between the three operations to provide the following potential benefits:

- Reduce external water requirements from the Namoi River and groundwater bores.
- Maximise the utilisation of storages between operations, allowing excess water from one operation to be transferred to another operation with spare capacity.
- Allow for the utilisation of the TCM final void post closure as a water storage.
- Share water supply from bores and the Namoi River between operations for drought security, in compliance with extraction limits and Water Access License allocations.
- Provide the opportunity to investigate beneficial reuse of the water for agricultural purposes along the pipeline route.

APPROVAL TIMELINE

Preparation of Scoping Report

Lodgement of Scoping Report

Secretary's environmental assessment requirements (SEARs) issued from the DPE

EIS development

WE ARE HERE

Development Application, including the EIS, lodged with DPE

DPE reviews the EIS and prepares for public exhibition

EIS placed on public exhibition for comment

Whitehaven responds to submissions

DPE assess the EIS, submissions and Whitehaven responses

The NSW Minister for Planning directs the Independent Planning Commission (IPC) to undertake an Independent Assessment

The IPC makes a determination

For more information about Maules Creek, visit:

whitehavencoal.com.au/maules-creek or scan the below QR code:



Key benefits of the Maules Creek Continuation Project

Supporting the local economy

Mining creates both direct and indirect jobs. It helps to diversify the regional economy, sustain local communities, provide skilled jobs and support global energy security.



Approximately
800
jobs,
predominantly
locally based.



Approximately
75%
of the MCCM
workforce is
locally-based.



Continuation of
\$200m+
annual contribution
to local businesses
and suppliers in
North West NSW.



Approximately
\$160m
paid in wages
annually to the
MCCM workforce.



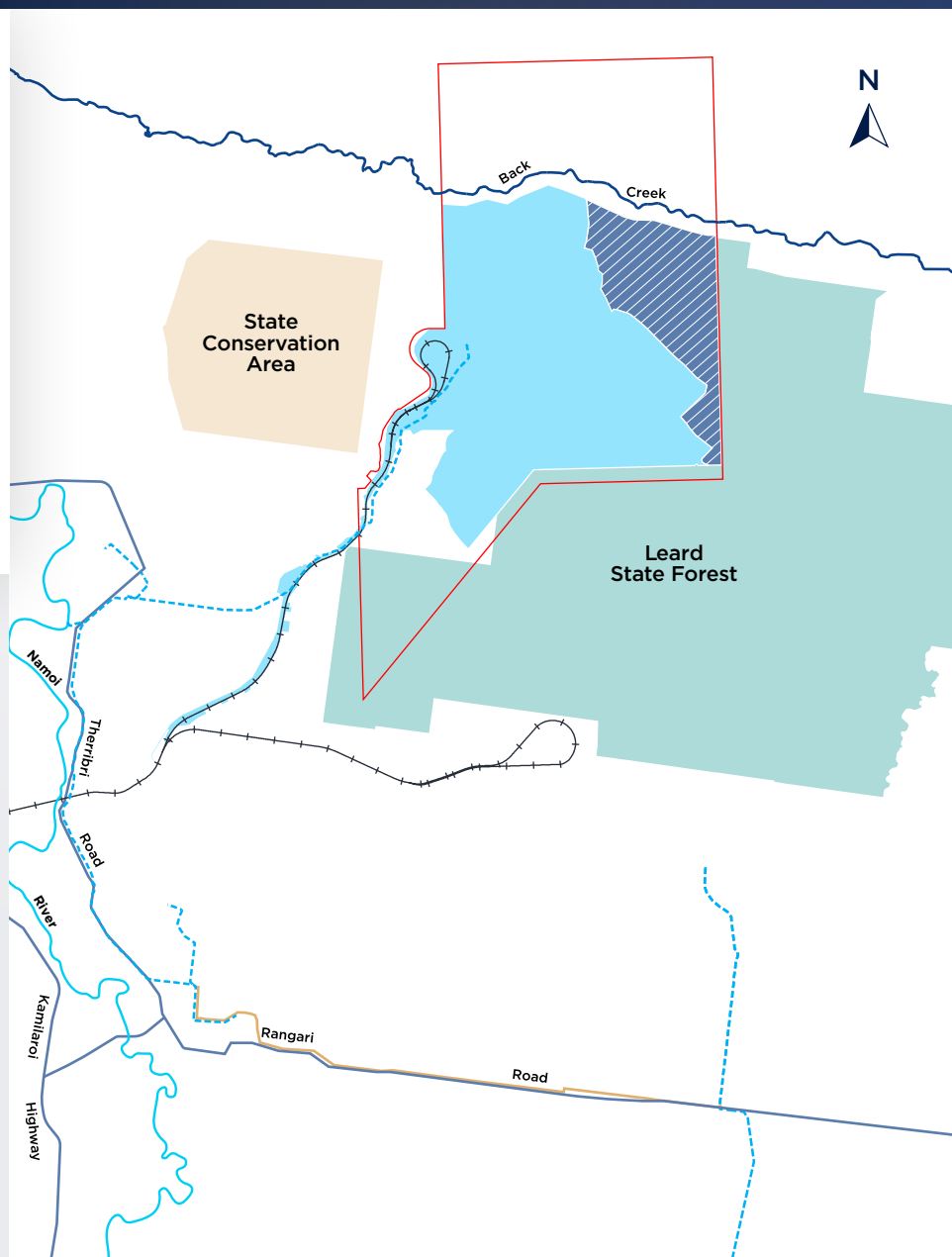
MCCM contributed
\$280m+
in taxes and
royalties in FY22.



Approximately
20%
of the MCCM
workforce identify
as Aboriginal and/or
Torres Strait Islander.

Legend

- Site Rail Loop
- Indicative Proposed Water Transfer Pipeline
- Indicative Approved Water Transfer Pipeline
- Roads
- Mining Lease Boundary
- Approximate Extent of Existing Approved Surface Development
- Indicative Open Cut Extension Area



The Maules Creek Continuation Project extends to the north and east of the current mine.

Contact Information

✉ MaulesCreekCoal@whitehavencoal.com.au

☎ 1800 WHAVEN (1800 942 836)

Scan the QR code for
more information about
Maules Creek



Maules Creek Continuation Project

January 2025

Whitehaven is preparing a State Significant Development (SSD) application to seek approval for the continuation of the Maules Creek Coal Mine (MCCM). This newsletter includes an update on the proposed Maules Creek Continuation Project (the Project), outlines the key areas that will be assessed in the Environmental Impact Statement (EIS), and provides information about how you can be involved.

Project update

The Project includes three key components:

1. Continuing MCCM within Whitehaven's existing mining and exploration tenements. This will enable extraction of high quality thermal and metallurgical (steelmaking) coals until 2044, which represents a continuation of 10 years beyond the currently approved mine life.
2. Landscape Revegetation Zones. This involves Whitehaven undertaking a revegetation program to establish approximately 2,300 hectares of native woodland to improve biodiversity values in the region.
3. A water pipeline between the existing MCCM pipeline network and the approved (but not yet built) Tarrawonga Coal Mine to Vickery Coal Mine pipeline. This pipeline would enable more efficient utilisation and sharing of water resources between Whitehaven's operations and help to reduce external water requirements.

Continuing Maules Creek Coal Mine

The application will propose that open cut operations continue within Whitehaven's existing mining and exploration tenements. It will also propose to allow mining at a rate of up to 14 Million tonnes per annum (Mtpa) – a modest increase from the currently approved 13 Mtpa. This will provide more flexibility to manage fluctuations in run-of-mine output year-to-year. The application does not propose to change the approved rail transport limit.

The Project proposes an increase to the current 865-strong operational workforce to an average of approximately 940 people and allows for the continuation of significant economic benefits delivered by the MCCM in the north-west region. Approximately 75% of the current MCCM workforce is locally based and Whitehaven remains committed to employing local workers and supporting businesses for the long-term.

Approval Timeline

Preparation of Scoping Report

Lodgement of Scoping Report

Secretary's environmental assessment requirements (SEARs) issued from the DPHI

EIS development

**WE ARE
HERE**

Development Application, including the EIS, lodged with DPHI

DPHI reviews the EIS and prepares for public exhibition

EIS placed on public exhibition for comment

Whitehaven responds to submissions

DPHI assess the EIS, submissions and Whitehaven responses

The NSW Minister for Planning directs the Independent Planning Commission (IPC) to undertake an Independent Assessment

The IPC makes a determination



Landscape Revegetation Zones

Since our last factsheet, we have added 'Landscape Revegetation Zones' as an important part of the Project.

To establish these Landscape Revegetation Zones, Whitehaven would plant between 500 and 800 hectares of native woodland in the first three to five years after project approval. This initiative would result in native woodland being established over approximately 2,300 hectares of Whitehaven-owned land.

Importantly, we have carefully considered potential impacts on agriculture in planning these revegetation zones. We've selected land that will provide benefits to the environment and limit impacts to productive agricultural land.

The Landscape Revegetation Zones would:

- complement the existing Leard State Forest Regional Strategy, by expanding habitat adjacent to Leard State Forest and providing links between woodland patches/existing conserved areas
- be in addition to the prescribed biodiversity offset requirements and provide a larger benefit compared to offsetting alone.

The Water Pipeline

The proposed water pipeline will connect the existing MCCM secondary water sources to the approved but not yet constructed pipeline between Tarrawonga Coal Mine and the Vickery Coal Mine. The pipeline will allow water sharing (within compliance and extraction limits and Water Access Licence allocation) between the three operations to provide the following benefits:

- an efficient water system between sites, which overall reduces external water requirements from the Namoi River and groundwater bores
- improvements to the utilisation of storage across operations, allowing excess water from one operation to be transferred to another operation with spare capacity
- potential for the utilisation of the Tarrawonga Coal Mine final void post closure for water storage.

For more information about Maules Creek, visit:

whitehavencoal.com.au/maules-creek

or scan the QR code:





Approvals update

The Project will require approval under the NSW *Environmental Planning and Assessment Act 1979* (EP&A Act). A development application will be submitted to the Department of Planning, Housing and Infrastructure (DPHI), supported by an Environmental Impact Statement (EIS). The Project will also likely require approval under the Commonwealth *Environment Protection and Biodiversity Conservation Act 1999* (EPBC Act).

The Project EIS is currently being prepared in accordance with the Secretary's Environmental Assessment Requirements (SEARs).

The key areas being assessed in the EIS include:

- Biodiversity, including terrestrial and aquatic flora and fauna
- Water hydrology and quality, and availability of surface water and groundwater
- Greenhouse gas emissions
- Noise, including cumulative noise
- Air quality
- Cultural heritage, including Aboriginal cultural values
- Social and economic aspects, including livelihoods, health and wellbeing, and access and economic benefits
- Agricultural impact
- Land, including stability, capability and soil chemistry
- Amenity, including visual amenity and vibration

Additionally, the EIS will assess other potential risks such as flooding, bushfires and contamination, as well as impacts to private property and public land.

Community and Stakeholder Engagement

Whitehaven is committed to ongoing engagement with the community and relevant stakeholders throughout the Project EIS preparation and assessment process. The Project EIS will be placed on public exhibition by the DPHI (expected to occur in mid-2025), which will provide opportunities for questions and issues to be raised and addressed.

Whitehaven will engage with the community to address any concerns raised during public exhibition of the Project EIS and will also provide a written response to submissions.

Anyone can provide feedback on the Project to Whitehaven via:

✉ MaulesCreekCoal@whitehavencoal.com.au

☎ 1800 WHAVEN (1800 942 836)

Key benefits of the Maules Creek Coal Mine

Supporting the local economy

Mining creates both direct and indirect jobs. It helps to diversify the regional economy, sustain local communities, provide skilled jobs, and support global energy security and economic development.



Approximately
940
jobs,
predominantly
locally based.



Approximately
75%
of the MCCM
workforce is
locally-based.



Continuation of
\$200m+
annual payment
to local businesses
and suppliers in
North West NSW.



Approximately
\$160m
paid annually
to the MCCM
workforce.



MCCM contributed
\$168m
in royalties
in FY24.



Approximately
20%
of the MCCM
workforce identify
as Aboriginal and/or
Torres Strait Islander.

Legend

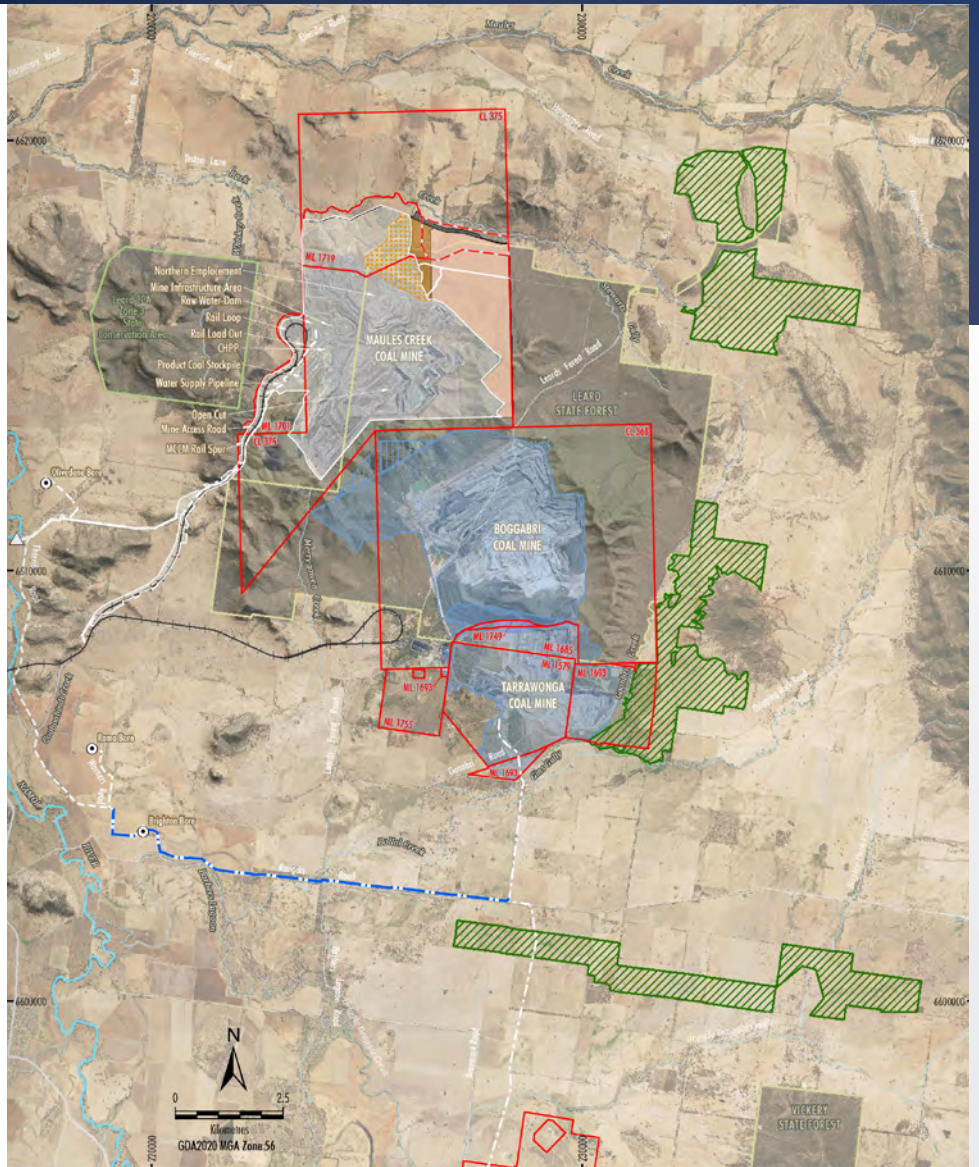
- +++ Rail Line
- State Conservation Area, Aboriginal Area
- State Forest
- Mining Tenement Boundary (ML and CL)
- Other Mining Operation¹
- Other Mining Operation - Proposed¹

Existing/Approved MCCM Development

- Approximate Extent of Existing/Approved Surface Development
- MCCM Water Supply Pipeline
- VCM to TCM Water Transfer Pipeline
- MCCM Groundwater Supply Bore
- MCCM Namoi River Pump Station

Maules Creek Continuation Project

- Indicative Open Cut Extension Area
- Indicative Overburden Emplacement Extension
- Existing Overburden Rehabilitation to be Disturbed
- Indicative Landscape Revegetation Zones²
- Indicative Water Transfer Pipeline (Proposed)
- Provisional Mining Lease Application Area
- Indicative Go-line, Access and Infrastructure Area



Source: NSW Spatial Services (2024)

Orthophoto Mosaic: Whitehaven Coal (2024-2019)

¹ BCM boundary digitised from Figure 1 of the BCM Modification 10 Scoping Letter.

² Landscape Revegetation Zones shown on this figure are approximate extents only.

For more information, visit:
whitehavencoal.com.au or scan the QR code

