



Staging Report

SSD 6339 - Stage 1 of RPAC Development

Macpherson Street Works

for

NSW Department of Planning, Industry & Environment

Rev. 2.0

10th December 2021



DOCUMENT CONTROL

Client: The Council of St. Catherine's School, Waverley
Job Title: RPAC Development
Report Staging Report – Macpherson Street Works

Rev.	Issued	Author	Reviewed By	Comment
0.1	22 Oct 2019	Warwick Smith	Sandra Robinson	Draft
0.2	4 Nov 2019	Warwick Smith	Sandra Robinson	For Review & Comment
1.0	8 Nov 2019	Warwick Smith	Sandra Robinson	For Submission
1.1	8 Nov 2019	Warwick Smith	Warwick Smith	Revised following preliminary Departmental review 21/Nov/2019
1.2	8 Dec 2021	Georgina MacKean	Warwick Smith	Draft revision to incorporate Macpherson Street Works
2.0	10 Dec 2021	Georgina MacKean	Warwick Smith	DPIE Issue



TABLE OF CONTENTS

1.	Site Definition.....	1
1.1.	Development Approval History.....	1
1.2.	SSD 6339 MOD2.....	3
1.3.	Original Staging Report dated 29 th November 2019.....	4
1.4.	Macpherson Street Works.....	4
1.5.	Purpose of this Staging Report.....	5
1.6.	Staging Plan – Construction [Condition C6B (a)].....	5
1.7.	Staging Plan – Operation [Condition C6B (b)].....	6
1.1.	Compliance with Conditions of Consent.....	6
	[Condition C6B(c)].....	6
1.2.	Cumulative Impact(s) arising from Staging Plan.....	7
	[Condition C6B (d)].....	7
2.	Appendices.....	8
2.1	Appendix A – Staging Report 29 th November 2019.....	8
2.2	Appendix B – Revised Master Plan Staging Drawing and Macpherson Street Works Drawing C15.....	9
2.3	Appendix C – Staged Compliance with Conditions of Consent.....	10
2.4	Appendix D – Minutes to Waverley Council Traffic Committee Meeting 22 nd February 2018.....	11



1. SITE DEFINITION

Located in the eastern suburbs of Sydney, St. Catherine's School, Waverley is Australia's oldest independent Anglican girl's school founded in 1856.

St. Catherine's School is situated on 26 Albion Street, Waverley (**the Site**). Encompassing more than 22,000m², the site is located approximately 2km south west of Bronte Beach and 1km east of Centennial Park. The Site has boundary frontages to Albion Street to its west, Macpherson Street to its south and Bronte Road, Leichhardt Street and Leichhardt Lane to its North-East and East. (Refer Figure 1).

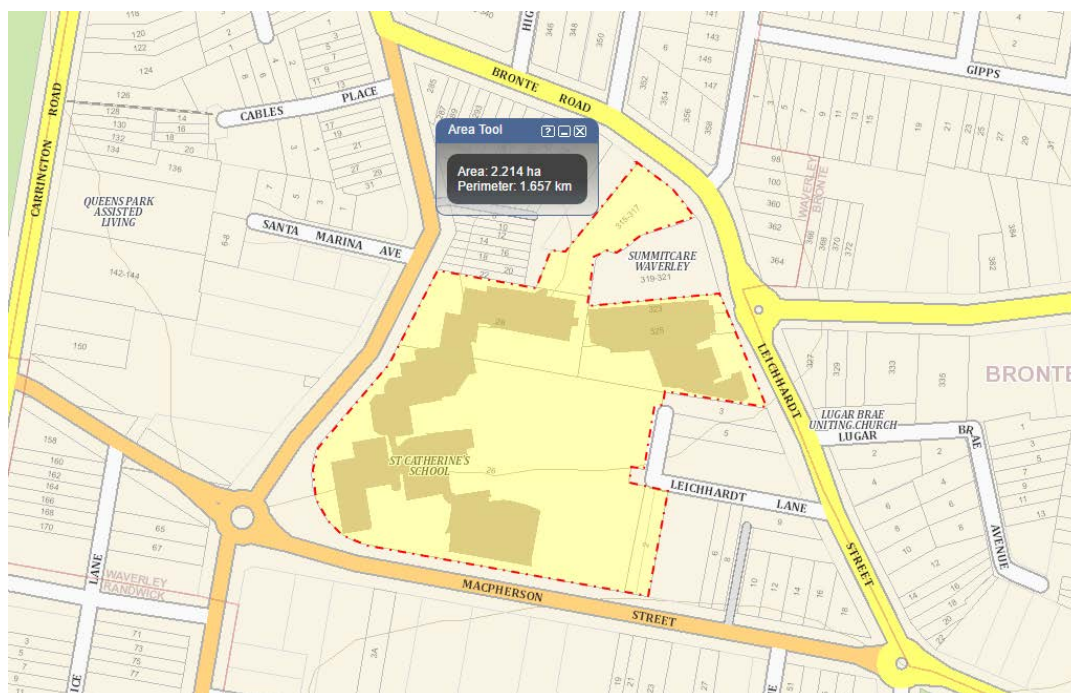


Figure 1 – Site Location Plan

1.1. Development Approval History

A State Significant Development Application was submitted to the (then) NSW Department of Planning and Environment (the **Department**) in 2014, seeking concept approval for a staged re-development of the School's Campus and detailed approval for Stage 1 of the Campus Master Plan comprising the new Research Centre, Performing Arts Centre and Aquatic Centre Development (**RPAC**).

SSD 6339 was approved on 6th April 2016 by the Department.

Approval was granted for a **Concept Proposal** for a Campus Master Plan in five (5) stages and a **Detailed Stage 1 Proposal** including the construction of the RPAC.

The five approved stages can generally be defined as;

Stage 1 – Construction of RPAC, tree removal, landscaping works and reconfiguration of existing car park

Stage 2 – Construction of new Jane Barker Hall, Renovations to existing J-Block, demolition of existing car park, landscaping, new pedestrian entry off Albion Street and accessibility upgrades



- Stage 3 – New infill building under existing Lenthall Building, minor demolition, internal space reconfiguration, landscaping works and accessibility upgrades
- Stage 4 – Reconfiguration of existing spaces within the existing Dame Joan Sutherland Centre (DJSC), Isabel Hall Wing, St. Johns Building and Junior School Building including internal demolition and construction work and associated accessibility upgrades
- Stage 5 – Demolition of No. 319A and No 317 Bronte Rd and construction of an extension to the existing Nan Hind Centre (Approved DA).

The original approved staging drawing is shown at Figure 2.

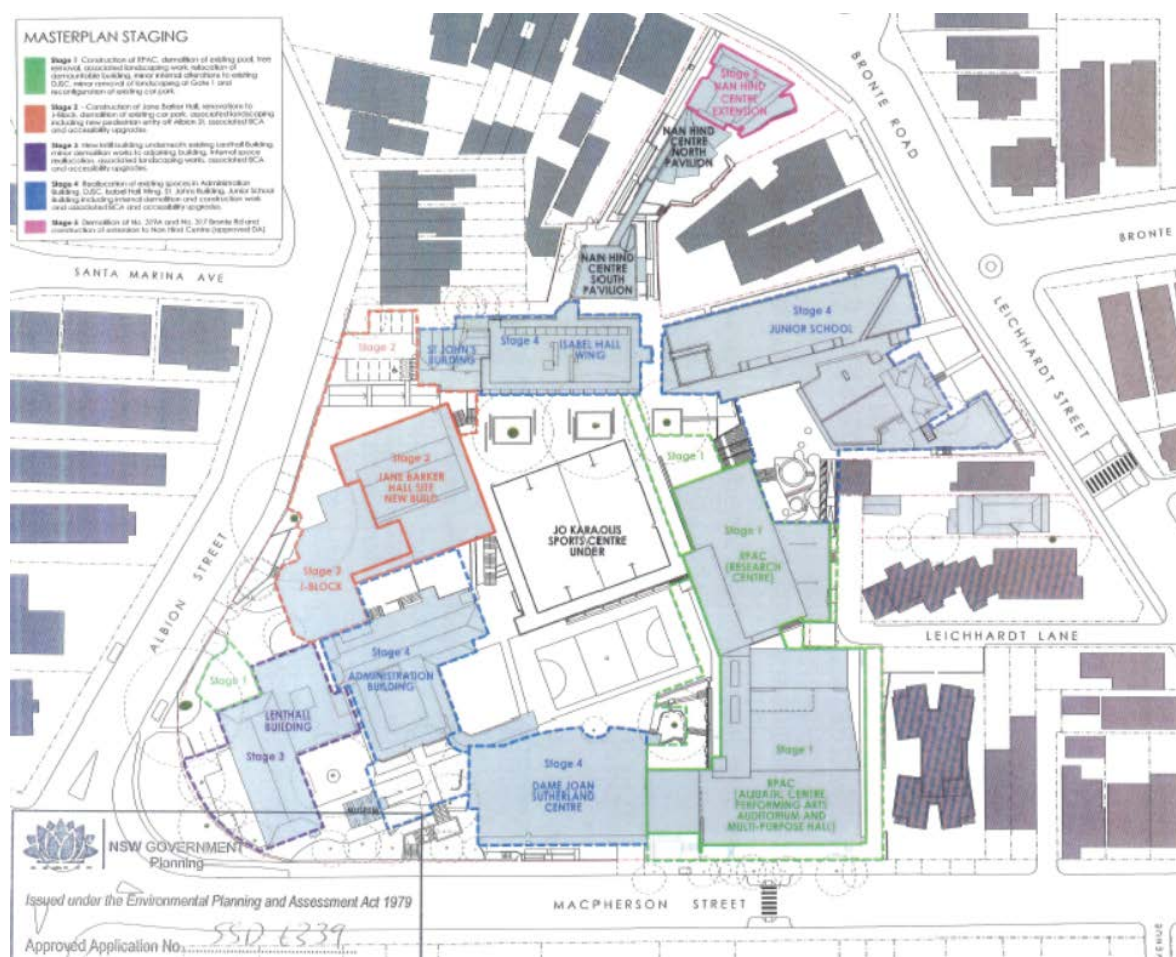


Figure 2 – Approved Master Plan Staging Plan

A Section 96 application dated 21st December 2018 was submitted to the Department and approved as SSD 6339 MOD 1 on 31st July 2018.

MOD 1 incorporated;

- i. minor modifications to the design of the RPAC building resulting in an additional 89 m2 of gross floor area (GFA) within the auditorium



- ii. amendments the internal layout of the RPAC building
- iii. Modifications to the location and design of the roof top plant, including the installation of emergency fire exhausts
- iv. Amendments to landscaping works
- v. Increase on-site car parking by 1 space, resulting in a total of 76 on-site car parking spaces.

1.2. SSD 6339 MOD2

A Section 4.55 application dated 31st May 2019 was submitted to the Department and approved as SSD 6339 MOD 2 on 1st September 2019.

The Statement of Environmental Effects dated 14th June 2019 and prepared by Robinson Urban Planning Pty. Ltd defines the extent of the Section 4.55(1A) as follows:

1. Separation of the Stage 1 RPAC Works into two separate Phases of Construction:
 - (a) Stage 1 works – Phase A: Performing Arts and Aquatic Centre (Including all of the approved Stage 1 demolition works), demolition of existing pool, tree removal, associated landscaping works, relocation of demountable building, minor internal alterations to the existing Dame Joan Sutherland Centre (**DJSC**), minor removal of landscaping at Gate 1 and reconfiguration of existing car parking;
 - (b) Stage 1 works – Phase B: Research Centre and associated Landscaping work.
2. Minor modifications to the design of Stage 1 RPAC works including;
 - (a) Landscape Changes including rationalisation of retaining walls and fencing, amendment to landscaping work surrounding the existing magnolia tree and amendments to the Discovery Court design;
 - (b) Minor internal replanning of toilet, change room, store rooms and office, kitchenette and laundry, stairs, weights and fitness room, service risers, theatre manager's office etc;
 - (c) Minor external modifications including;
 - (i) Connection and link with Jo Karaolis Sports Centre (**JKSC**) removed and extent of works within the JKSC reduced;
 - (ii) Relocation of external stair to Research Centre
 - (iii) Temporary Roof Structure provided for wet weather pedestrian access between RPAC (Phase A) and JKSC. This Roof Structure will be removed at the commencement of RPAC Phase B
 - (iv) External material selection changes
 - (v) New rubbish bin enclosure to the shared boundary with 4 Macpherson Street.

Conditions C6B- C6D introduced by MOD 2 requires the preparation of a Staging Report.



1.3. Original Staging Report dated 29th November 2019

The Staging Report dated 29th November 2019 was prepared in response to conditions C6A, C6B, C6C and C6D of the development consent (Refer Appendix A) and approval of the Staging Report was issued by the Planning Secretary 13.12.2019 in accordance with the conditions of consent.

SSD 6339 MOD 2 redefined Stage 1 of the approved Master Plan into two separate Phases. Phase A includes all of the works previously approved as Stage 1 except for the two level Research Centre. Phase B includes the construction of the Research Centre previously approved within Stage 1 of the Master Plan.

The current approved staging drawing is shown at Figure 3.

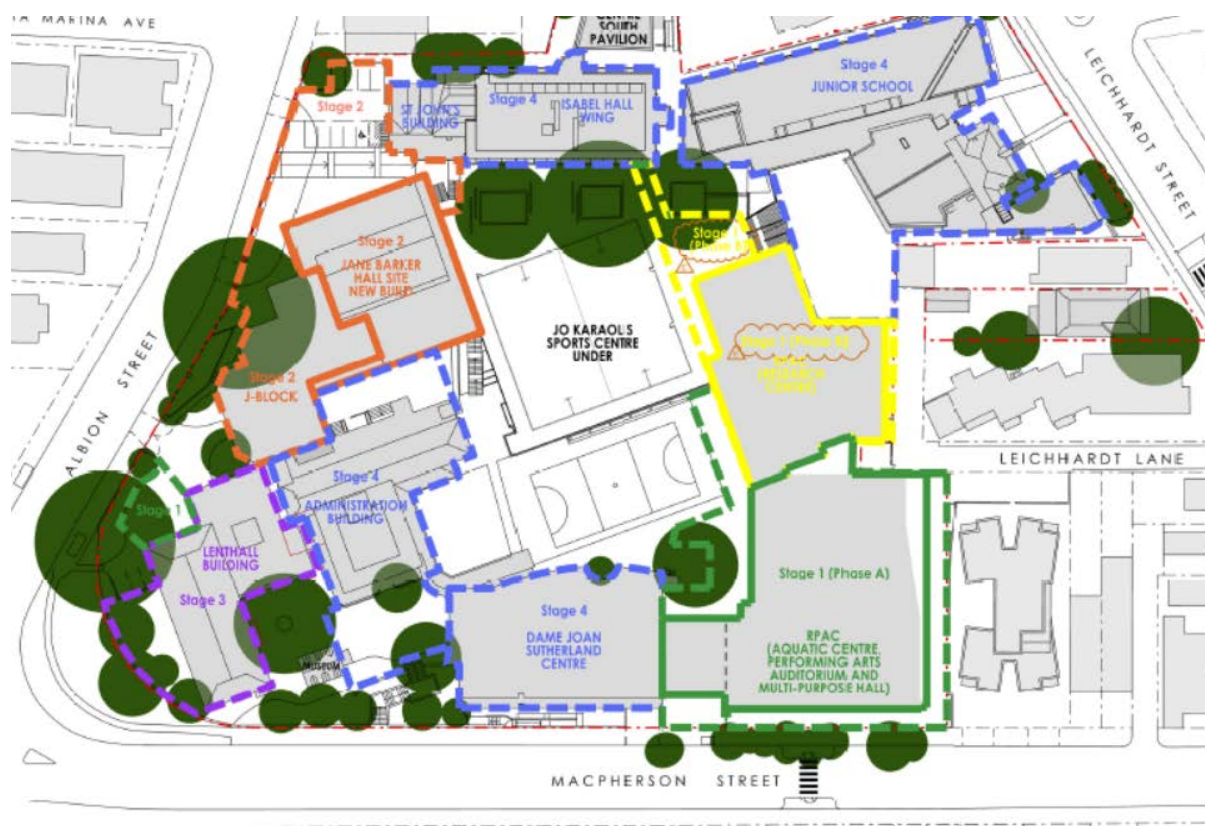


Figure 3 – Current approved Master Plan Staging

1.4. Macpherson Street Works

The approved works include the demolition of the existing pedestrian crossing in Macpherson Street and its relocation to the East in order to maximise the pick-up and drop-off zone along the school's Macpherson Street frontage. The "Macpherson Street Works" also include the reinstatement of a bus stop to the East of the new pedestrian crossing, footpath adjustment and reinstatement works, landscaping and kerbing along the school frontage to the Northern side of Macpherson Street and associated signage and line marking adjustments.



The full extent of the Macpherson Street Works is shown on TTW Drawing C15 – P6 (Refer Appendix B). Drawing C15 inclusive of the proposed relocation, signage and line marking changes were approved by the Waverley Traffic Committee at their meeting of 22nd February 2018 (Refer Appendix D - Minuted item TC/C.02/18.01 – Page 3 of minutes) in accordance with Schedule 3, Condition B3 of the development consent.

1.5. Purpose of this Staging Report

The purpose of this staging report is to further define the staging of Stage 1 (Phase A) of the approved works by separately defining the Macpherson Street Works as its own part of the Stage 1 works which may be completed separately to the remainder of the Stage 1 (Phase A) works.

In accordance with Condition C6A of the Development Consent this staging report redefines Stage 1 Phase A works as follows;

Separation of the Stage 1 - Phase A RPAC Works into two separate parts

- (a) Stage 1 Works – Phase A – **Part 1**: Performing Arts and Aquatic Centre (Including all of the approved Stage 1 demolition works), demolition of existing pool, tree removal, associated landscaping works, relocation of demountable building, minor internal alterations to the existing Dame Joan Sutherland Centre (**DJSC**), minor removal of landscaping at Gate 1 and reconfiguration of existing car parking but excluding the Macpherson Street pedestrian crossing and bus stop relocation works;
- (b) Stage 1 works – Phase A – **Part 2**: Macpherson Street works as shown on TTW drawing C15 revision P6 including associated signage and line marking works.

(Refer Appendix B for the revised Master Plan Staging Plan)

1.6. Staging Plan – Construction [Condition C6B (a)]

In accordance with Condition C6B (a), the construction of all stages of the project is anticipated as follows;

The Construction of Stage 1 Phase (A) – Part 1 is in progress having commenced in late 2019 with an anticipated completion date in January 2022.

The Construction of Stage 1 Phase (A) – Part 2, the “Macpherson Street Works” have been delayed dependant on the procurement of a Road Opening Permit for the works from Waverley Council. As these works are best undertaken during a school vacation period (E.g. Summer, Easter, Winter or Spring), the commencement of the Macpherson Street works are anticipated to occur within 6 months of obtaining all required permits to enable procurement and pre-planning to occur and is expected to take less than 5 weeks to complete once construction commences.

The Construction of Stage 1 Phase (B) is anticipated to be constructed in conjunction with Stage 4 of the Master Plan due to site access to this part of the site through the school campus.

The timing of the construction of each future stage of the Master Plan remains difficult to predict with certainty at present due to aspects such as changing needs in educational



facilities, procurement of future development consents, construction programs and the securing of project funding. There may be a requirement to seek further modification to the approved sequence of future stages depending on these aspects of the school's operations.

The following table represents the current forecast key dates for each future stage of the Campus Master Plan and is based upon all available information at this time:

Stage	Pre-Construction	Construction Start	Target Completion
Stage 1 (A) Part 1	November 2019	December 2019	January 2022
Stage 1 (A) Part 2	Complete	Within 6 Months of permit(s)	5 Week duration
Stage 2	Q1 2022	Q4 2023	Q4 2024
Stage 3	Q1 2025	Q4 2026	Q4 2027
Stage 4	Q1 2028	Q4 2029	Q4 2031
Stage 1 (B)	Q1 2028	Q4 2029	Q4 2031
Stage 5	Q1 2032	Q4 2033	Q4 2034

Table 1 – Indicative key dates for future stages of the Master Plan

1.7. Staging Plan – Operation [Condition C6B (b)]

The operation of each stage is anticipated to directly follow the completion of construction of each stage of the Campus Master Plan subject to completion of construction, procurement of the appropriate occupancy certification and satisfaction of any conditions of consent relating to occupation.

1.1. Compliance with Conditions of Consent [Condition C6B(c)]

The current conditions of consent contain general conditions that relate to all stages of the Campus Master Plan (SSD 6339- Schedule 2; Part B), and specific conditions that relate to pre-construction, construction, pre-occupation and occupation stages of Stage 1 Phase (A) and Stage 1 Phase (B) of the Master Plan(SSD 6339 - Schedule 3; Parts A-F).

The majority of conditions relating to Stage 1 will be satisfied prior to occupation of Stage 1 Phase (A) Part 1. Conditions specific to the Macpherson Street works will be satisfied following completion of Stage 1 Phase (A) Part 2. These include E2, E3, which include the completion of a Road Safety Audit following Completion of the Macpherson Street Works and if the audit identifies any issues with improvements of the Macpherson Street Drop-Off and Pick-Up performance a range of supplementary measures to be investigated.

The DA conditions schedule at Appendix D identifies which conditions will be satisfied during each stage and Phase of the revised staging of the Master Plan.

Schedule 3 Part F contains conditions to be satisfied post occupation of Stage 1(A) RPAC.



Conditions F2 – F5 may be triggered subject to Condition A7 (Schedule 3) which relates to the review of the OTMP by the CCC for a minimum of two years after the commencement of operations within the RPAC. (Stage 1 Phase (A) Part 1)

Appendix E confirms that compliance with condition A.7 will be satisfied "*post occupation*" of Stage 1(A) RPAC and by all subsequent stages of the Master Plan (Stages 1(B) – Stage 5 inclusive).

The requirements of Conditions F2 – F5 (inclusive), are subject to the findings of reviews undertaken in accordance with A7.c) ii) and may only occur following occupation of Stage 1 Phase (A) - Part 1 RPAC and the relevant reviews and findings of the Operational Transport Management Plan (OTMP).

Future Stages of the Master Plan will be subject to future development applications and will comply with separate conditions of consent issued by the relevant consent authority.

1.2. Cumulative Impact(s) arising from Staging Plan [Condition C6B (d)]

There will be negligible impact arising from the separation of the Macpherson Street works (Stage 1 Works – Phase A – **Part 2**) from Stage 1 Works – Phase A – **Part 1** of the development as the existing Drop-Off and Pick-Up arrangements in Macpherson Street will remain until such time as the crossing relocation has been completed.

Upon completion of the Macpherson Street works (Stage 1 Works – Phase A – **Part 2**), an improvement in the Drop-Off and Pick-Up arrangements in Macpherson Street should occur due to an increase in car line capacity and the optimum bus stop location. Upon completion of the Macpherson Street works an independent Road Safety Audit for the reconfigured Macpherson Street Drop-Off and pick-Up zone can be undertaken and evaluated in accordance with Condition E2.



2. APPENDICIES

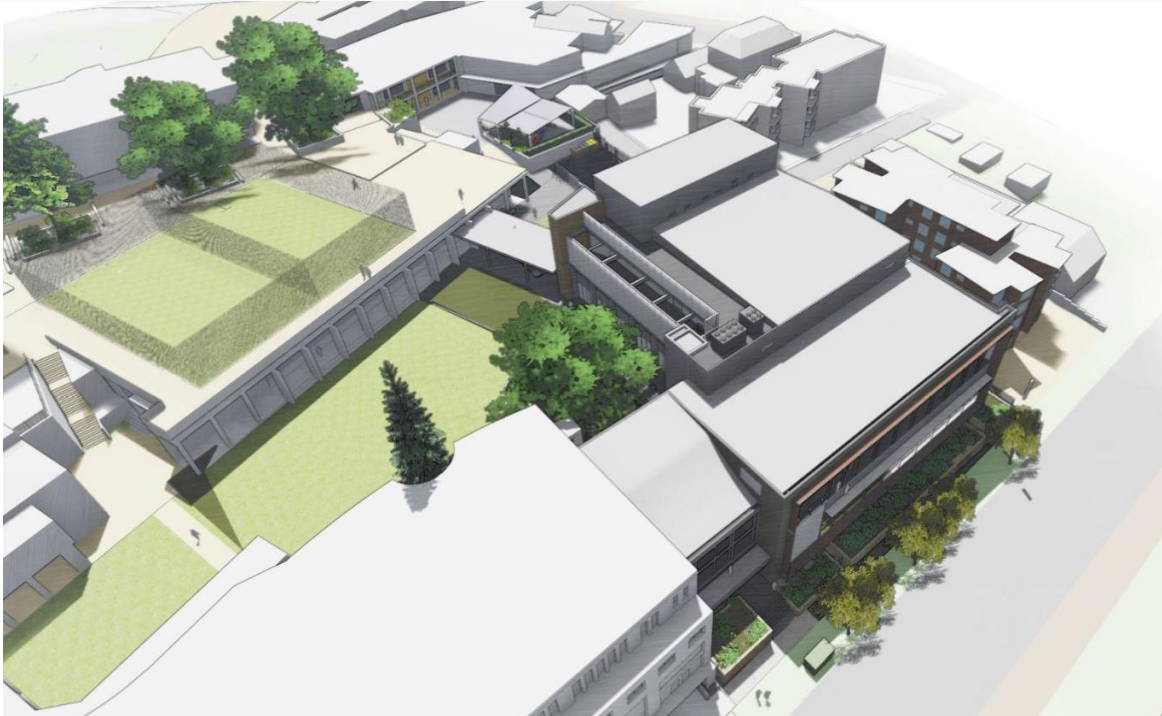
2.1 Appendix A – Staging Report 29th November 2019



Sandrick



PROJECT DIRECTIONS



Staging Report

SSD 6339 - Stage 1 of RPAC Development

for

NSW Department of Environment, Industry & Planning

Rev. 1.1

29th November 2019



Staging Report

DOCUMENT CONTROL

Client: The Council of St. Catherine's School, Waverley
Job Title: RAAC Development
Report Staging Report

Rev.	Issued	Author	Reviewed By	Comment
0.1	22 Oct 2019	Warwick Smith		Draft
0.2	4 Nov 2019	Warwick Smith	Sandra Robinson	For Review & Comment
1.0	8 Nov 2019	Warwick Smith	Sandra Robinson	For Submission
1.1	8 Nov 2019	Warwick Smith	Warwick Smith	Revised following preliminary Departmental review 21/Nov/2019



TABLE OF CONTENTS

1.	Site Definition	1
1.1.	Development Approval History	1
1.2.	Current Approval – SSD 6339 MOD2	3
1.3.	Purpose of this Report	4
1.4.	Staging Plan – Construction	4
1.5.	Staging Plan - Operation	5
1.6.	Compliance with Conditions of Consent.....	5
1.7.	Cumulative Impact(s) arising from Staging Plan	6
2.	Appendices	7
2.1	Appendix A – Section 4.55(1A) Application for Modification - 14 th June 2019 ...	7
2.2	Appendix B – Development Consent	8
2.3	Appendix C – Staged Compliance with Conditions of Consent	9



1. SITE DEFINITION

Located in the eastern suburbs of Sydney, St. Catherine's School, Waverley is Australia's oldest independent Anglican girls' school founded in 1856.

St. Catherine's School is situated on 26 Albion Street, Waverley (**the Site**). Encompassing more than 22,000m², the site is located approximately 2km south west of Bronte Beach and 1km east of Centennial Park. The Site has boundary frontages to Albion Street to its west, Macpherson Street to its south and Bronte Road, Leichhardt Street and Leichhardt Lane to its North-East and East. (Refer Figure 1).

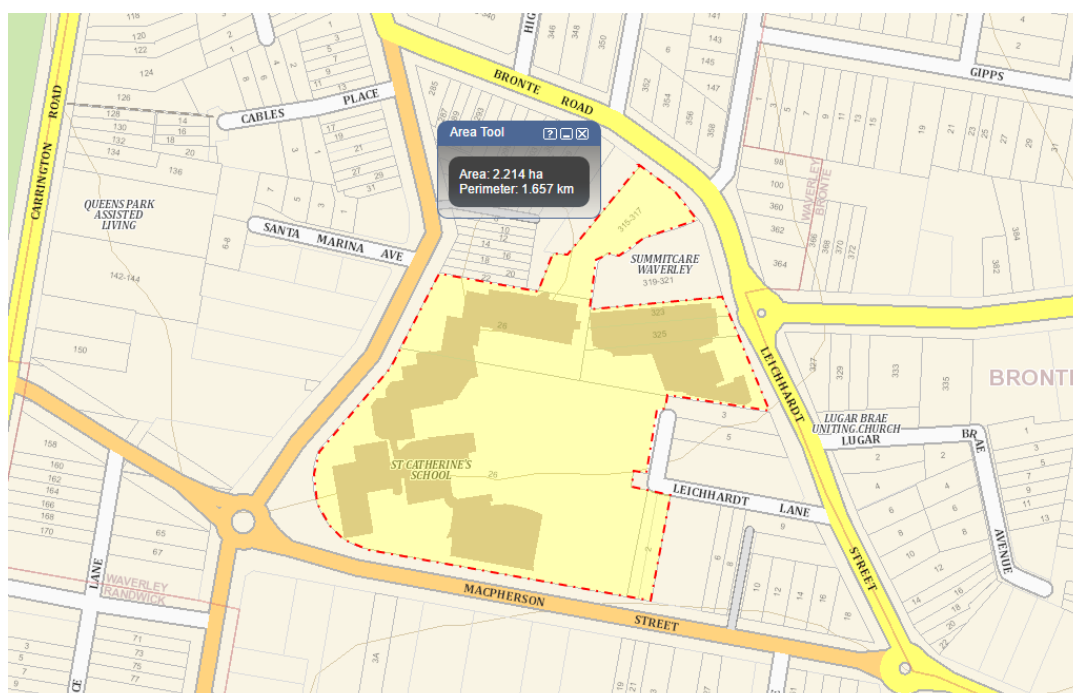


Figure 1 – Site Location Plan

1.1. Development Approval History

A State Significant Development Application was submitted to the (then) NSW Department of Planning and Environment (the **Department**) in 2014, seeking concept approval for a staged re-development of the School's Campus and detailed approval for Stage 1 of the Campus Master Plan comprising the new Research Centre, Performing Arts Centre and Aquatic Centre Development (**RPAC**).

SSD 6339 was approved on 6th April 2016 by the Department.

Approval was granted for a **Concept Proposal** for a Campus Master Plan in five (5) stages and a **Detailed Stage 1 Proposal** including the construction of the RPAC.

The five approved stages can generally be defined as;

Stage 1 – Construction of RPAC, tree removal, landscaping works and reconfiguration of existing car park



- Stage 2 – Construction of new Jane Barker Hall, Renovations to existing J-Block, demolition of existing car park, landscaping, new pedestrian entry off Albion Street and accessibility upgrades
- Stage 3 – New infill building under existing Lenthall Building, minor demolition, internal space reconfiguration, landscaping works and accessibility upgrades
- Stage 4 – Reconfiguration of existing spaces within the existing Dame Joan Sutherland Centre (DJSC), Isabel Hall Wing, St. Johns Building and Junior School Building including internal demolition and construction work and associated accessibility upgrades
- Stage 5 – Demolition of No. 319A and No 317 Bronte Rd and construction of an extension to the existing Nan Hind Centre (Approved DA).

The approved staging drawing is shown at Figure 2.

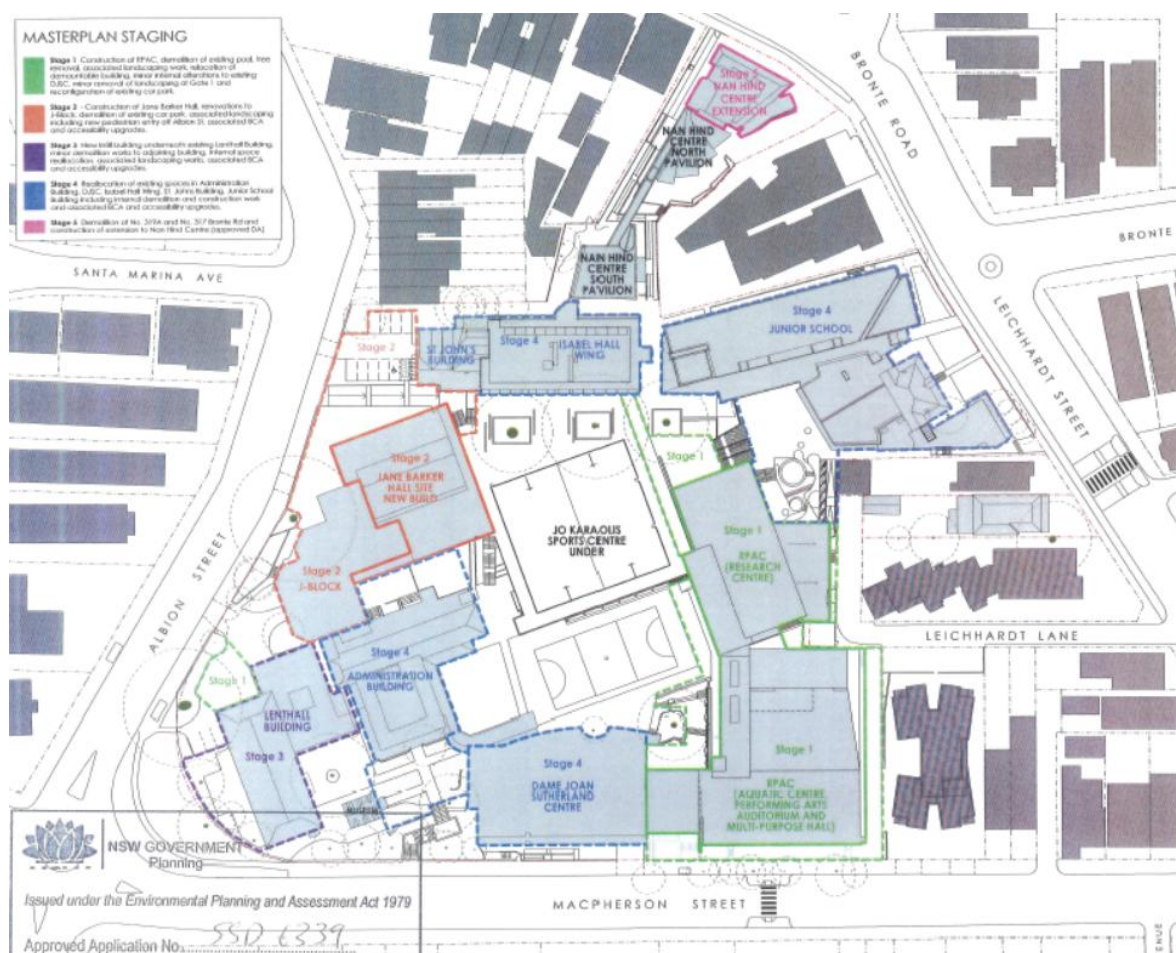


Figure 2 – Approved Master Plan Staging Plan

A Section 96 application dated 21st December 2018 was submitted to the Department and approved as SSD 6339 MOD 1 on 31st July 2018.



MOD 1 incorporated;

- i. minor modifications to the design of the RPAC building resulting in an additional 89 m² of gross floor area (GFA) within the auditorium
- ii. amendments the internal layout of the RPAC building
- iii. Modifications to the location and design of the roof top plant, including the installation of emergency fire exhausts
- iv. Amendments to landscaping works
- v. Increase on-site car parking by 1 space, resulting in a total of 76 on-site car parking spaces.

1.2. Current Approval – SSD 6339 MOD2

A Section 4.55 application dated 31st May 2019 was submitted to the Department and approved as SSD 6339 MOD 2 on 1st September 2019.

The Statement of Environmental Effects dated 14th June 2019 and prepared by Robinson Urban Planning Pty. Ltd (Refer Appendix A) defines the extent of the Section 4.55(1A) as follows:

1. Separation of the Stage 1 RPAC Works into two separate Phases of Construction:
 - (a) Stage 1 works – Phase A: Performing Arts and Aquatic Centre (Including all of the approved Stage 1 demolition works), demolition of existing pool, tree removal, associated landscaping works, relocation of demountable building, minor internal alterations to the existing Dame Joan Sutherland Centre (**DJSC**), minor removal of landscaping at Gate 1 and reconfiguration of existing car parking;
 - (b) Stage 1 works – Phase B: Research Centre and associated Landscaping work.
2. Minor modifications to the design of Stage 1 RPAC works including;
 - (a) Landscape Changes including rationalisation of retaining walls and fencing, amendment to landscaping work surrounding the existing magnolia tree and amendments to the Discovery Court design;
 - (b) Minor internal replanning of toilet, change room, store rooms and office, kitchenette and laundry, stairs, weights and fitness room, service risers, theatre manager's office etc;
 - (c) Minor external modifications including;
 - (i) Connection and link with Jo Karaolis Sports Centre (**JKSC**) removed and extent of works within the JKSC reduced;
 - (ii) Relocation of external stair to Research Centre
 - (iii) Temporary Roof Structure provided for wet weather pedestrian access between RPAC (Phase A) and JKSC. This Roof Structure will be removed at the commencement of RPAC Phase B
 - (iv) External material selection changes
 - (v) New rubbish bin enclosure to the shared boundary with 4 Macpherson Street.

Conditions C6B- C6D introduced by MOD 2 require the preparation of a Staging Report.



1.3. Purpose of this Report

The purpose of this Staging Report is to respond to conditions C6A, C6B, C6C and C6D of the development consent (refer Appendix B) and obtain approval of the Staging Report from the Planning Secretary in accordance with the conditions of consent.

SSD 6339 MOD 2 redefines Stage 1 of the approved Master Plan into two separate Phases. Phase A includes all of the works previously approved as Stage 1 except for the two level Research Centre. Phase B includes the construction of the Research Centre previously approved within Stage 1 of the Master Plan.

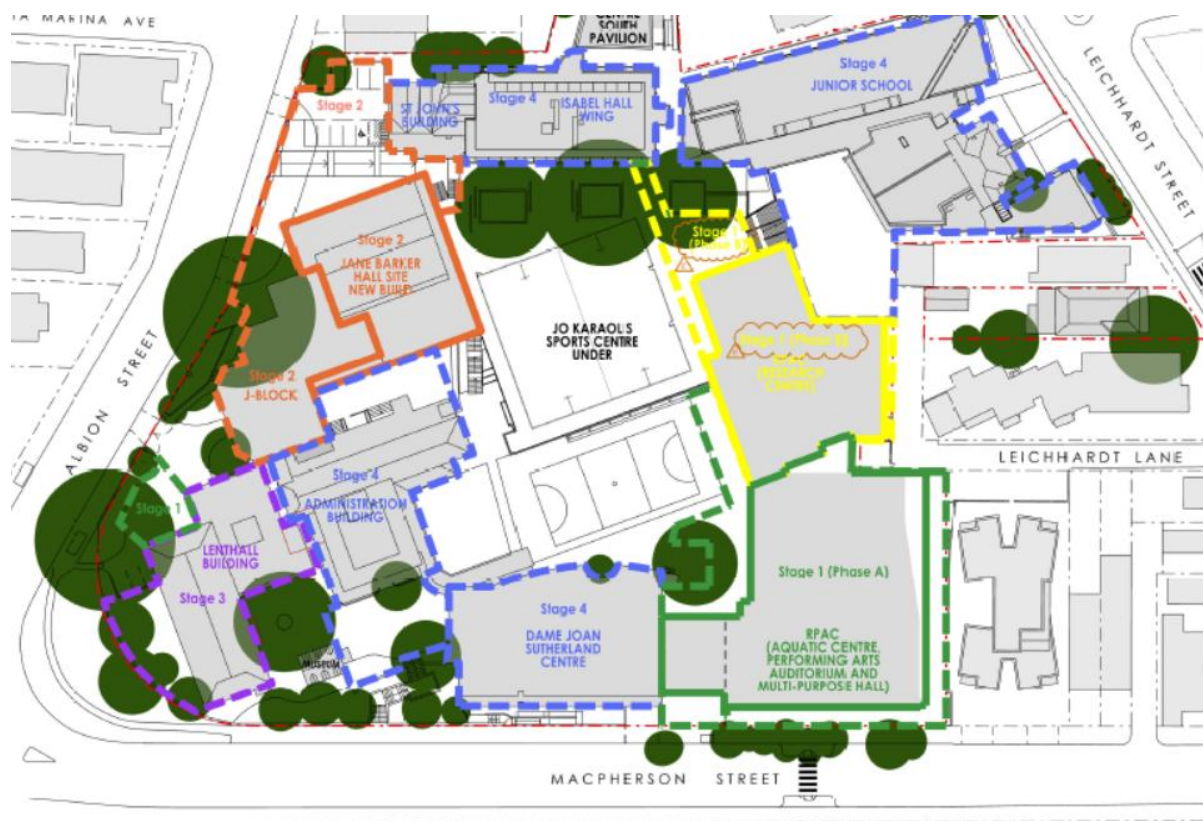


Figure 3 – Revised Master Plan Staging

1.4. Staging Plan – Construction

The Construction of Stage 1 Phase (A) will commence late 2019 with an anticipated completion date of August 2021.

The Construction of Stage 1 Phase (B) will be deferred and constructed in conjunction with Stage 4 of the Master Plan.

The timing of the construction of each future stage of the Master Plan is difficult to predict at this time due to aspects such as changing needs in educational facilities, procurement of future development consents, construction programs and the securing of project funding. There may be a requirement to seek further modification to the approved sequence of future stages depending on these aspects of the school's operation.



The following table represents the current forecast key dates for each stage of the Campus Master Plan and is based upon all available information at this time:

Stage	Pre-Construction	Construction Start	Target Completion
Stage 1 (A)	November 2019	December 2019	August 2021
Stage 2	Q1 2022	Q4 2022	Q4 2024
Stage 3	Q4 2024	Q4 2025	Q4 2027
Stage 4	Q1 2028	Q4 2029	Q4 2031
Stage 1 (B)	Q1 2028	Q4 2029	Q4 2031
Stage 5	Q1 2032	Q4 2033	Q4 2034

Table 1 – Indicative key dates for future stages of the Master Plan

1.5. Staging Plan - Operation

The operation of each stage is anticipated to directly follow the completion of construction of each stage of the Campus Master Plan subject to completion of construction, procurement of the appropriate occupancy certification and satisfaction of any conditions of consent relating to occupation.

1.6. Compliance with Conditions of Consent

The current conditions of consent contain general conditions that relate to all stages of the Campus Master Plan (SSD 6339- Schedule 2; Part B), and specific conditions that relate to pre-construction, construction, pre-occupation and occupation stages of Stage 1 Phase (A) and Stage 1 Phase (B) of the Master Plan(SSD 6339 - Schedule 3; Parts A-F).

The majority of conditions relating to Stage 1 will be satisfied prior to occupation of Stage 1 Phase (A). Appendix C identifies which conditions will be satisfied during each stage and Phase of the proposed staging of the Master Plan.

Schedule 3 Part F contains conditions to be satisfied post occupation of Stage 1(A) RPAC.

Conditions F2 – F5 may be triggered subject to Condition A7. Appendix C confirms that compliance with condition A.7 will be satisfied “*post occupation*” of Stage 1(A) RPAC and by all subsequent stages of the Master Plan (Stages 1(B) – Stage 5 inclusive). The requirements of Conditions F2 – F5 (inclusive), are subject to the findings of reviews undertaken in accordance with A7.c) ii) and may only occur following occupation of Stage 1(A) RPAC and the relevant reviews and findings of the Operational Transport Management Plan (OTMP).

Future Stages of the Master Plan will be subject to future development applications and will comply with separate conditions of consent issued by the relevant consent authority.



1.7. Cumulative Impact(s) arising from Staging Plan

There will be negligible impact arising from the removal of the Research Centre from Stage 1 of the Development.

The school will continue to operate from their existing Junior and Senior library facilities which will receive a minor refurbishment.

Pedestrian and traffic management plans required for the operation of the remainder of the RPAC development will be completed in accordance with the development consent.

Car parking provisions required for the operation of the remainder of the RPAC development will be completed in accordance with the development consent.

The removal of the Research Centre from Stage 1 of the Development will reduce the overall construction program to complete the RPAC.



2.2 Appendix B – Revised Master Plan Staging Drawing and Macpherson Street Works Drawing C15



ST CATHERINE'S SCHOOL

26 ALBION STREET WAVERLEY, NSW

PART 1 - CAMPUS MASTER PLAN

PART 2 - DETAILED DESIGN OF NEW RESEARCH, PERFORMING ARTS AND AQUATIC CENTRE (RPAC)

INDEX

ARCHITECTURAL DRAWINGS

A.000 COVER SHEET AND STAGING DIAGRAM

PART 1 - CAMPUS MASTER PLAN

- A.MP.001 CAMPUS SITE SURVEY
- A.MP.002 CAMPUS SITE PHOTOS
- A.MP.003 CAMPUS SITE ANALYSIS 1 - EXISTING BUILDING STOCK
- A.MP.004 CAMPUS SITE ANALYSIS 2 - POSSIBLE NEW BUILD SITES
- A.MP.005 CAMPUS SITE ANALYSIS 3 - FACILITY NEEDS ANALYSIS
- A.MP.006 CAMPUS SITE ANALYSIS 4 - LOCATION OF NEW FACILITIES
- A.MP.007 CAMPUS SITE IMPACT ASSESSMENT 1 - KEY ENTRY POINTS AND PEDESTRIAN MOVEMENT & TRAFFIC MANAGEMENT AND CAR PARKING
- A.MP.008 CAMPUS SITE IMPACT ASSESSMENT 2 - PRECINCTS & LANDSCAPE AREA AND BUILDING FOOTPRINT
- A.MP.009 CAMPUS SITE IMPACT ASSESSMENT 3 - GROSS FLOOR AREA CALCULATIONS & HEIGHT
- A.MP.010 EXISTING SITE PLAN - LEVEL 1
- A.MP.011 EXISTING SITE PLAN - LEVEL 2
- A.MP.012 EXISTING SITE PLAN - LEVEL 3
- A.MP.013 EXISTING SITE PLAN - LEVEL 4
- A.MP.014 EXISTING SITE PLAN - LEVEL 5
- A.MP.015 EXISTING SITE PLAN - LEVEL 6
- A.MP.016 EXISTING SITE PLAN - LEVEL 7
- A.MP.017 EXISTING SITE PLAN - LEVEL 8
- A.MP.018 EXISTING SITE PLAN - ROOF PLAN
- A.MP.020 SITE MASTER PLAN - LEVEL 1
- A.MP.021 SITE MASTER PLAN - LEVEL 2
- A.MP.022 SITE MASTER PLAN - LEVEL 3
- A.MP.023 SITE MASTER PLAN - LEVEL 4
- A.MP.024 SITE MASTER PLAN - LEVEL 5
- A.MP.025 SITE MASTER PLAN - LEVEL 6
- A.MP.026 SITE MASTER PLAN - LEVEL 7
- A.MP.027 SITE MASTER PLAN - LEVEL 8
- A.MP.028 SITE MASTER PLAN - ROOF PLAN
- A.MP.030 SECTIONS - A, B, C & D
- A.MP.031 SECTIONS - E, F & G

PART 1 - CAMPUS MASTER PLAN - CONTINUED

- A.MP.040 SHADOW DIAGRAMS : JANE BARKER HALL SITE NEW BUILD - PLAN - 21 MARCH - EQUINOX
- A.MP.041 SHADOW DIAGRAMS : JANE BARKER HALL SITE NEW BUILD - PLAN - 21 JUNE - WINTER SOLSTICE
- A.MP.042 SHADOW DIAGRAMS : JANE BARKER HALL SITE NEW BUILD - PLAN - 21 DECEMBER - SUMMER SOLSTICE
- A.MP.100 SITE ANALYSIS 5 : SUMMARY OF SITE ANALYSIS
- A.MP.700 SHADOW DIAGRAMS : RPAC - PLAN - MARCH 21 - EQUINOX
- A.MP.701 SHADOW DIAGRAMS : RPAC - PLAN - JUNE 21 - WINTER SOLSTICE
- A.MP.702 SHADOW DIAGRAMS : RPAC - PLAN - DECEMBER 21 - SUMMER SOLSTICE
- A.MP.703 SHADOW DIAGRAMS : RPAC - WEST ELEVATION OF NO.4 MACPHERSON STREET - MARCH 21 - EQUINOX
- A.MP.704 SHADOW DIAGRAMS : RPAC - WEST ELEVATION OF NO.4 MACPHERSON STREET - JUNE 21 - WINTER SOLSTICE
- A.MP.705 SHADOW DIAGRAMS : RPAC - WEST ELEVATION OF NO.4 MACPHERSON STREET - DECEMBER 21 - SUMMER SOLSTICE
- A.MP.706 SHADOW DIAGRAMS : RPAC - NORTH ELEVATION OF NO.4 MACPHERSON STREET - MARCH 21 - EQUINOX
- A.MP.707 SHADOW DIAGRAMS : RPAC - NORTH ELEVATION OF NO.4 MACPHERSON STREET - JUNE 21 - WINTER SOLSTICE
- A.MP.708 SHADOW DIAGRAMS : RPAC - NORTH ELEVATION OF NO.4 MACPHERSON STREET - DECEMBER 21 - SUMMER SOLSTICE

PART 2 - RPAC

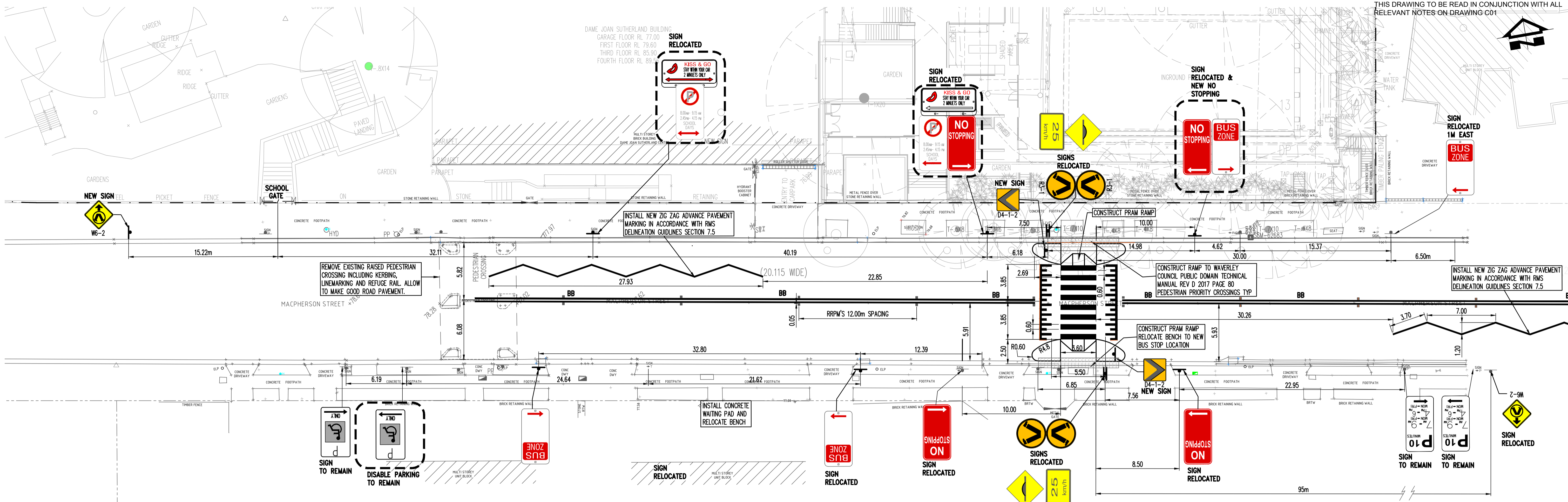
- A.001 SITE SURVEY 1
- A.002 SITE SURVEY 2
- A.003 SITE ANALYSIS
- A.004 DEMOLITION PLAN
- A.100 FLOOR PLAN - LEVEL 1
- A.101 FLOOR PLAN - LEVEL 2
- A.102 FLOOR PLAN - LEVEL 3
- A.103 FLOOR PLAN - LEVEL 4
- A.104 FLOOR PLAN - LEVEL 5
- A.105 FLOOR PLAN - LEVEL 6
- A.106 FLOOR PLAN - LEVEL 7
- A.107 ROOF PLAN
- A.150 ELEVATIONS - SOUTH AND EAST
- A.151 ELEVATIONS - NORTH AND WEST
- A.160 SECTIONS - A, B & C
- A.161 SECTIONS - D, E & F
- A.800 PHOTOMONTAGES

MASTERPLAN STAGING

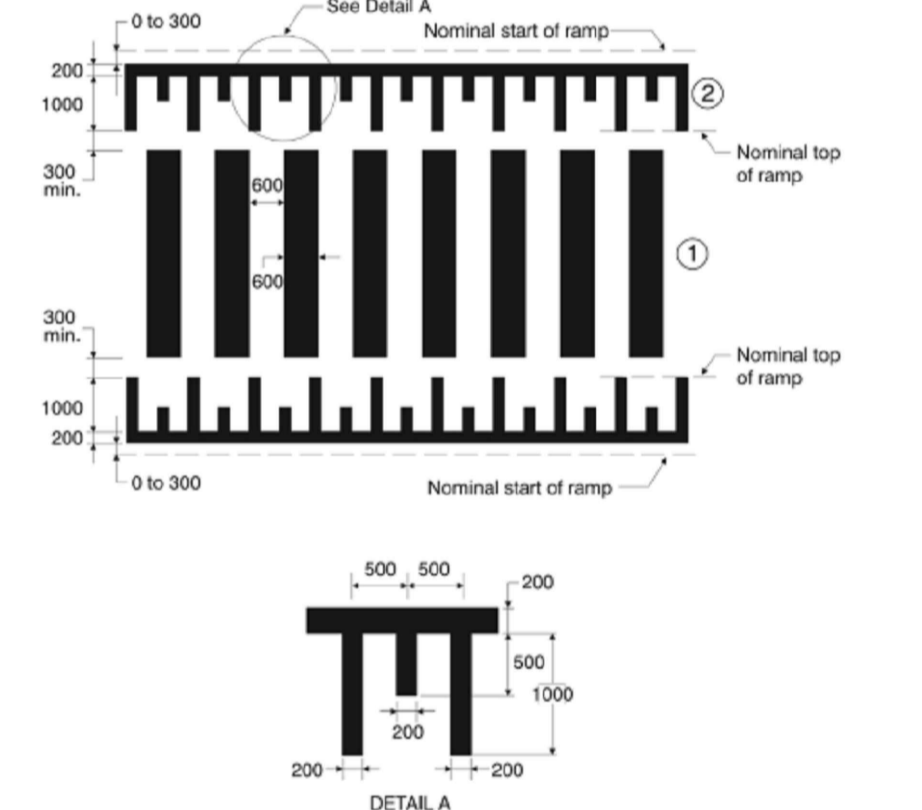
- Stage 1-Phase A (Part 1) - Construction of RPAC Aquatic Centre & Performing Arts, demolition of existing pool, tree removal, associated landscaping work, relocation of demountable building, minor internal alterations to existing DJSC, minor removal of landscaping at Gate 1 and reconfiguration of existing car park.
- Stage 1 - Phase A (Part 2) - Macpherson Street Works. Refer to ITW drawing C15-Revision P6 Macpherson Street Signage Plans
- Stage 1 - Phase B - Construction of RPAC Research Centre & associated landscaping work.
- Stage 2 - Construction of Jane Barker Hall, renovations to J-Block, demolition of existing car park, associated landscaping including new pedestrian entry off Albion St, associated BCA and accessibility upgrades.
- Stage 3 - New infill building underneath existing Lenthall Building, minor demolition works to adjoining building, internal space reallocation, associated landscaping works, associated BCA and accessibility upgrades.
- Stage 4 - Reallocation of existing spaces in Administration Building, DJSC, Isabel Hall Wing, St. Johns Building, Junior School Building including internal demolition and construction work and associated BCA and accessibility upgrades.
- Stage 5 - Demolition of No. 319A and No. 317 Bronte Rd and construction of extension to Nan Hind Centre (approved DA)



<table border="1"> <tr> <td>F</td> <td>S.4.55 MODIFICATION APPLICATION</td> <td>09.12.21</td> </tr> <tr> <td>E</td> <td>S.4.55 MODIFICATION APPLICATION</td> <td>27.05.19</td> </tr> <tr> <td>D</td> <td>ISSUE FOR INFORMATION</td> <td>04.04.19</td> </tr> <tr> <td>C</td> <td>ISSUE FOR INFORMATION</td> <td>29.03.19</td> </tr> <tr> <td>B</td> <td>D.A. ISSUE</td> <td>24.09.14</td> </tr> <tr> <td>A</td> <td>D.A. ISSUE</td> <td>03.07.14</td> </tr> <tr> <td>Issue</td> <td>Amendment Description</td> <td>Date</td> </tr> </table>		F	S.4.55 MODIFICATION APPLICATION	09.12.21	E	S.4.55 MODIFICATION APPLICATION	27.05.19	D	ISSUE FOR INFORMATION	04.04.19	C	ISSUE FOR INFORMATION	29.03.19	B	D.A. ISSUE	24.09.14	A	D.A. ISSUE	03.07.14	Issue	Amendment Description	Date	<p>Client ST. CATHERINE'S SCHOOL 26 Albion Street Waverley NSW 2024</p>	<p>Architect PD MAYOH PTY LTD ABN 1678809806 Peter Mayoh, Regd. Architect No 3788 60 Spanghalls Avenue, Northbridge NSW 2063 P: (02) 9958 0458 info@mayoharchitects.com.au www.mayoharchitects.com.au</p>	<p>Project Part 2: RPAC Address 26 Albion Street Waverley NSW 2024</p>	<p>Drawing Title COVER SHEET & STAGING DIAGRAM</p>	<p>Scale: 1:500 @ A1 Job No: 1212</p> <p>Checked: JS,DBV Drawn: DBV, DH</p> <p>Dwg No. A.000 Issue</p>
F	S.4.55 MODIFICATION APPLICATION	09.12.21																									
E	S.4.55 MODIFICATION APPLICATION	27.05.19																									
D	ISSUE FOR INFORMATION	04.04.19																									
C	ISSUE FOR INFORMATION	29.03.19																									
B	D.A. ISSUE	24.09.14																									
A	D.A. ISSUE	03.07.14																									
Issue	Amendment Description	Date																									



MUTCD Part 10 Figure 2 - Markings on a raised pedestrian crossing (zebra)



Notes
 1. Ramp height 75 mm to 100 mm.
 2. Ramp grade 1:12 to 1:20.
 Dimensions in millimetres

7.5 Zig-Zag advance pavement markings

Zig-zag marking may be provided at existing pedestrian crossings where the sight distance is inadequate.

The use of zig-zag markings is not intended to encourage installation of pedestrian crossings at inappropriate or hazardous locations, but rather to improve the awareness of those existing crossings which, have a sight distance problem but can not be reasonably re-located.

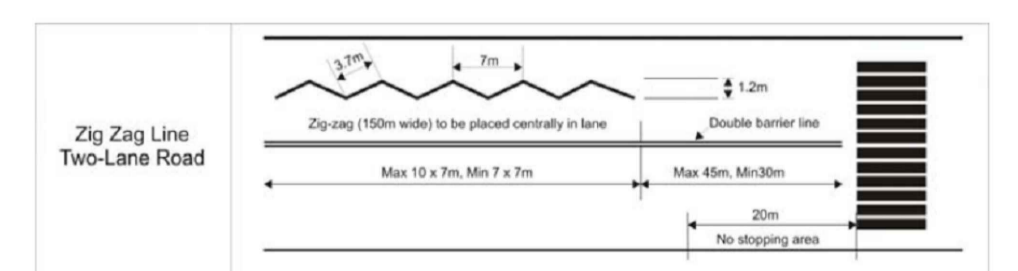
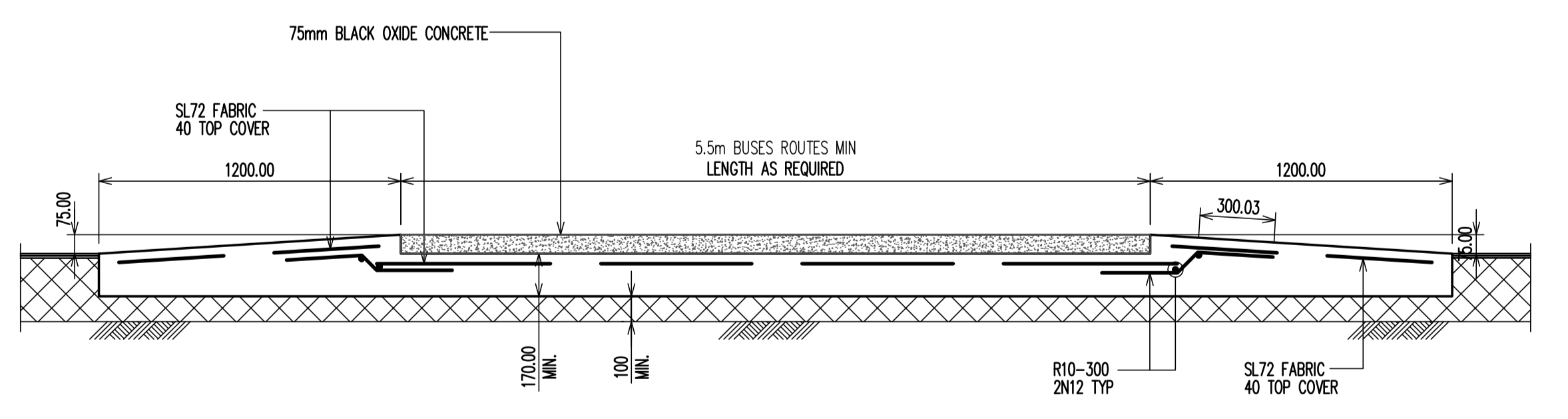
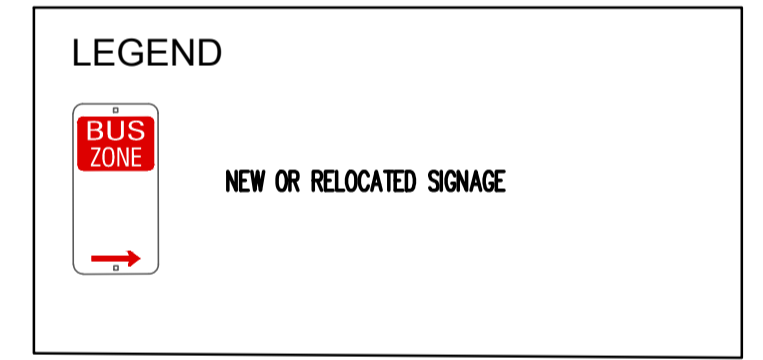
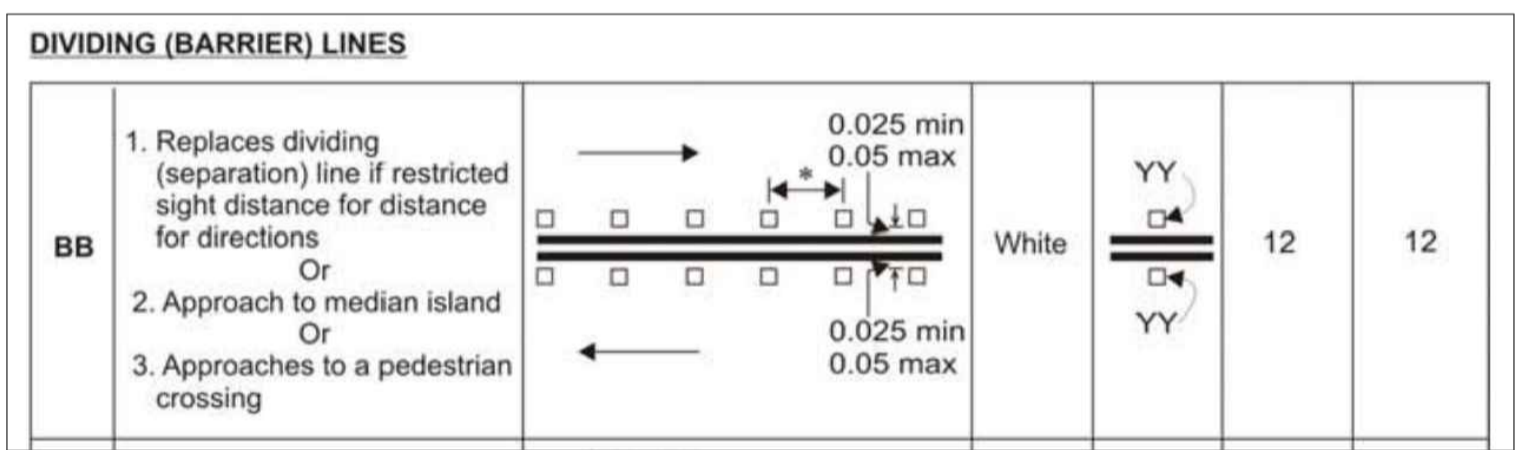


Figure 7.4: Zig Zag Markings (Dimensions are in mm unless otherwise stated)



RAISED CROSSING DETAIL

SCALE 1:20

INFORMATION
 THIS DETAIL IS DESIGNED FOR A SPEED LIMIT OF 15km/h. GENERALLY TO BE USED IN ROAD RESTRICTION AREAS OR PRIVATE DRIVEWAYS

NO STOPPING SIGNS	
Width of extensions (m)	From kerb ramp to sign (m)
0	20
1.5	15
2.0	10
>2.5	At Tangent point of kerb extension and kerb line or 7.5 which ever is greater.

NOTES
 ① Consideration should be given to providing additional NO PARKING particularly if adverse site geometry exists. The Crossing Sight Distance (CSD) as detailed in Section 3.3 of AUSTRoads Guide to Road Design - Part 4a should be considered. As a guide, a minimum of 10m of NO PARKING should be considered as it will increase the CSD and provide additional pick up and set down opportunities.
 ② Where kerb extensions are used the nominated distances on the approach may be varied in accordance with the adjoining table. NB: This does not apply when splinter islands are used which still allow the crossing to commence at the kerb line.
 ③ Where kerb & gutter does not exist the signs are to be located an appropriate distance from the edge of the pavement.
 ④ For kerb extension design refer to Pedestrian Refuge Technical Direction.
 ⑤ Locate NO STOPPING signs at the TP of the kerb extension and the kerb line for kerb extensions designed in accordance with the Pedestrian Refuge Technical Direction.

T000792

Rev	Description	Eng	Draft	Date	Rev	Description	Eng	Draft	Date	Rev	Description	Eng	Draft	Date
P6	PRELIMINARY	HS	JW	10.11.17										
P5	PRELIMINARY	HS	JW	09.11.17										
P4	PRELIMINARY	HS	JW	06.11.17										
P3	PRELIMINARY	HS	JW	30.10.17										
P2	PRELIMINARY	HS	WW	13.06.17										
P1	PRELIMINARY	HS	JW	30.05.17	P7	PRELIMINARY	SB	JW	27.11.17					

Architect

 60 Strathallen Avenue, Northbridge NSW 2063
 P: (02) 9958 0488

Civil Engineer

 612 9439 7288 | 48 Chandos Street St Leonards NSW 2065

Project
ST CATHERINE'S SCHOOL, WAWERLEY

Sheet Subject
MACPHERSON STREET NEW SIGNAGE PLAN

Scale: A1
 1:200
 Drawn: JW
 Authorised: SB
 Job No: 161379
 Drawing No: C15
 Revision: P6
 Plot File Created: Nov 27, 2017 - 10:03am

PRELIMINARY

Path: C:\Users\jw\Documents\Nov 27, 2017 - 10:03am

2.3 Appendix C – Staged Compliance with Conditions of Consent



**CONDITIONS OF DEVELOPMENT CONSENT SSD 6339
ST CATHERINE'S SCHOOL
INCORPORATING MOD 1 (31.7.2018) AND MOD2 (1.9.2019)**

<input checked="" type="checkbox"/>	COMPLIANCE WILL BE SATISFIED DURING STAGE
<input type="checkbox"/>	COMPLIANCE WILL NOT BE SATISFIED DURING STAGE
<input checked="" type="checkbox"/>	COMPLIANCE WILL BE SATISFIED POST OCCUPATION OF STAGE

SCHEDULE 2 PART A TERMS OF CONSENT

A.1	Concept Approval granted subject to EIS, RIS and Conditions
A.2	Development under Concept Approval subject of subsequent development consent
A.3	Future development applications to be generally consistent with consent
A.4	Carry out the development in accordance with plans & documents
A.5	Gross Floor Area permitted is 23,047
A.6	Student & Staff Population limits
A.7	Car Parking - 75 Minimum at the completion of all development
A.8	OTMP to be prepared
A.9	Inconsistency between documents clarified
A.10	Lapsing of Approval
A.11	Secretary as moderator
A.12	Legal notices to be served on Secretary

STAGE 1 (A) STAGE 1 (A) STAGE 1 (B) STAGE 2 STAGE 3 STAGE 4 STAGE 5

Part 1	Part 2						
<input checked="" type="checkbox"/>	<input checked="" type="checkbox"/>	<input checked="" type="checkbox"/>	<input checked="" type="checkbox"/>	<input checked="" type="checkbox"/>	<input checked="" type="checkbox"/>	<input checked="" type="checkbox"/>	<input checked="" type="checkbox"/>
<input checked="" type="checkbox"/>	<input checked="" type="checkbox"/>	<input checked="" type="checkbox"/>	<input checked="" type="checkbox"/>	<input checked="" type="checkbox"/>	<input checked="" type="checkbox"/>	<input checked="" type="checkbox"/>	<input checked="" type="checkbox"/>
<input checked="" type="checkbox"/>	<input checked="" type="checkbox"/>	<input checked="" type="checkbox"/>	<input checked="" type="checkbox"/>	<input checked="" type="checkbox"/>	<input checked="" type="checkbox"/>	<input checked="" type="checkbox"/>	<input checked="" type="checkbox"/>
<input checked="" type="checkbox"/>	<input checked="" type="checkbox"/>	<input checked="" type="checkbox"/>	<input checked="" type="checkbox"/>	<input checked="" type="checkbox"/>	<input checked="" type="checkbox"/>	<input checked="" type="checkbox"/>	<input checked="" type="checkbox"/>
<input checked="" type="checkbox"/>	<input checked="" type="checkbox"/>	<input checked="" type="checkbox"/>	<input checked="" type="checkbox"/>	<input checked="" type="checkbox"/>	<input checked="" type="checkbox"/>	<input checked="" type="checkbox"/>	<input checked="" type="checkbox"/>
<input checked="" type="checkbox"/>	<input checked="" type="checkbox"/>	<input checked="" type="checkbox"/>	<input checked="" type="checkbox"/>	<input checked="" type="checkbox"/>	<input checked="" type="checkbox"/>	<input checked="" type="checkbox"/>	<input checked="" type="checkbox"/>
<input checked="" type="checkbox"/>	<input checked="" type="checkbox"/>	<input checked="" type="checkbox"/>	<input checked="" type="checkbox"/>	<input checked="" type="checkbox"/>	<input checked="" type="checkbox"/>	<input checked="" type="checkbox"/>	<input checked="" type="checkbox"/>
<input checked="" type="checkbox"/>	<input checked="" type="checkbox"/>	<input checked="" type="checkbox"/>	<input checked="" type="checkbox"/>	<input checked="" type="checkbox"/>	<input checked="" type="checkbox"/>	<input checked="" type="checkbox"/>	<input checked="" type="checkbox"/>
<input checked="" type="checkbox"/>	<input checked="" type="checkbox"/>	<input checked="" type="checkbox"/>	<input checked="" type="checkbox"/>	<input checked="" type="checkbox"/>	<input checked="" type="checkbox"/>	<input checked="" type="checkbox"/>	<input checked="" type="checkbox"/>
<input checked="" type="checkbox"/>	<input checked="" type="checkbox"/>	<input checked="" type="checkbox"/>	<input checked="" type="checkbox"/>	<input checked="" type="checkbox"/>	<input checked="" type="checkbox"/>	<input checked="" type="checkbox"/>	<input checked="" type="checkbox"/>
<input checked="" type="checkbox"/>	<input checked="" type="checkbox"/>	<input checked="" type="checkbox"/>	<input checked="" type="checkbox"/>	<input checked="" type="checkbox"/>	<input checked="" type="checkbox"/>	<input checked="" type="checkbox"/>	<input checked="" type="checkbox"/>
<input checked="" type="checkbox"/>	<input checked="" type="checkbox"/>	<input checked="" type="checkbox"/>	<input checked="" type="checkbox"/>	<input checked="" type="checkbox"/>	<input checked="" type="checkbox"/>	<input checked="" type="checkbox"/>	<input checked="" type="checkbox"/>
<input checked="" type="checkbox"/>	<input checked="" type="checkbox"/>	<input checked="" type="checkbox"/>	<input checked="" type="checkbox"/>	<input checked="" type="checkbox"/>	<input checked="" type="checkbox"/>	<input checked="" type="checkbox"/>	<input checked="" type="checkbox"/>
<input checked="" type="checkbox"/>	<input checked="" type="checkbox"/>	<input checked="" type="checkbox"/>	<input checked="" type="checkbox"/>	<input checked="" type="checkbox"/>	<input checked="" type="checkbox"/>	<input checked="" type="checkbox"/>	<input checked="" type="checkbox"/>
<input checked="" type="checkbox"/>	<input checked="" type="checkbox"/>	<input checked="" type="checkbox"/>	<input checked="" type="checkbox"/>	<input checked="" type="checkbox"/>	<input checked="" type="checkbox"/>	<input checked="" type="checkbox"/>	<input checked="" type="checkbox"/>
<input checked="" type="checkbox"/>	<input checked="" type="checkbox"/>	<input checked="" type="checkbox"/>	<input checked="" type="checkbox"/>	<input checked="" type="checkbox"/>	<input checked="" type="checkbox"/>	<input checked="" type="checkbox"/>	<input checked="" type="checkbox"/>
<input checked="" type="checkbox"/>	<input checked="" type="checkbox"/>	<input checked="" type="checkbox"/>	<input checked="" type="checkbox"/>	<input checked="" type="checkbox"/>	<input checked="" type="checkbox"/>	<input checked="" type="checkbox"/>	<input checked="" type="checkbox"/>
<input checked="" type="checkbox"/>	<input checked="" type="checkbox"/>	<input checked="" type="checkbox"/>	<input checked="" type="checkbox"/>	<input checked="" type="checkbox"/>	<input checked="" type="checkbox"/>	<input checked="" type="checkbox"/>	<input checked="" type="checkbox"/>
<input checked="" type="checkbox"/>	<input checked="" type="checkbox"/>	<input checked="" type="checkbox"/>	<input checked="" type="checkbox"/>	<input checked="" type="checkbox"/>	<input checked="" type="checkbox"/>	<input checked="" type="checkbox"/>	<input checked="" type="checkbox"/>
<input checked="" type="checkbox"/>	<input checked="" type="checkbox"/>	<input checked="" type="checkbox"/>	<input checked="" type="checkbox"/>	<input checked="" type="checkbox"/>	<input checked="" type="checkbox"/>	<input checked="" type="checkbox"/>	<input checked="" type="checkbox"/>
<input checked="" type="checkbox"/>	<input checked="" type="checkbox"/>	<input checked="" type="checkbox"/>	<input checked="" type="checkbox"/>	<input checked="" type="checkbox"/>	<input checked="" type="checkbox"/>	<input checked="" type="checkbox"/>	<input checked="" type="checkbox"/>
<input checked="" type="checkbox"/>	<input checked="" type="checkbox"/>	<input checked="" type="checkbox"/>	<input checked="" type="checkbox"/>	<input checked="" type="checkbox"/>	<input checked="" type="checkbox"/>	<input checked="" type="checkbox"/>	<input checked="" type="checkbox"/>
<input checked="" type="checkbox"/>	<input checked="" type="checkbox"/>	<input checked="" type="checkbox"/>	<input checked="" type="checkbox"/>	<input checked="" type="checkbox"/>	<input checked="" type="checkbox"/>	<input checked="" type="checkbox"/>	<input checked="" type="checkbox"/>
<input checked="" type="checkbox"/>	<input checked="" type="checkbox"/>	<input checked="" type="checkbox"/>	<input checked="" type="checkbox"/>	<input checked="" type="checkbox"/>	<input checked="" type="checkbox"/>	<input checked="" type="checkbox"/>	<input checked="" type="checkbox"/>
<input checked="" type="checkbox"/>	<input checked="" type="checkbox"/>	<input checked="" type="checkbox"/>	<input checked="" type="checkbox"/>	<input checked="" type="checkbox"/>	<input checked="" type="checkbox"/>	<input checked="" type="checkbox"/>	<input checked="" type="checkbox"/>
<input checked="" type="checkbox"/>	<input checked="" type="checkbox"/>	<input checked="" type="checkbox"/>	<input checked="" type="checkbox"/>	<input checked="" type="checkbox"/>	<input checked="" type="checkbox"/>	<input checked="" type="checkbox"/>	<input checked="" type="checkbox"/>
<input checked="" type="checkbox"/>	<input checked="" type="checkbox"/>	<input checked="" type="checkbox"/>	<input checked="" type="checkbox"/>	<input checked="" type="checkbox"/>	<input checked="" type="checkbox"/>	<input checked="" type="checkbox"/>	<input checked="" type="checkbox"/>
<input checked="" type="checkbox"/>	<input checked="" type="checkbox"/>	<input checked="" type="checkbox"/>	<input checked="" type="checkbox"/>	<input checked="" type="checkbox"/>	<input checked="" type="checkbox"/>	<input checked="" type="checkbox"/>	<input checked="" type="checkbox"/>
<input checked="" type="checkbox"/>	<input checked="" type="checkbox"/>	<input checked="" type="checkbox"/>	<input checked="" type="checkbox"/>	<input checked="" type="checkbox"/>	<input checked="" type="checkbox"/>	<input checked="" type="checkbox"/>	<input checked="" type="checkbox"/>
<input checked="" type="checkbox"/>	<input checked="" type="checkbox"/>	<input checked="" type="checkbox"/>	<input checked="" type="checkbox"/>	<input checked="" type="checkbox"/>	<input checked="" type="checkbox"/>	<input checked="" type="checkbox"/>	<input checked="" type="checkbox"/>
<input checked="" type="checkbox"/>	<input checked="" type="checkbox"/>	<input checked="" type="checkbox"/>	<input checked="" type="checkbox"/>	<input checked="" type="checkbox"/>	<input checked="" type="checkbox"/>	<input checked="" type="checkbox"/>	<input checked="" type="checkbox"/>
<input checked="" type="checkbox"/>	<input checked="" type="checkbox"/>	<input checked="" type="checkbox"/>	<input checked="" type="checkbox"/>	<input checked="" type="checkbox"/>	<input checked="" type="checkbox"/>	<input checked="" type="checkbox"/>	<input checked="" type="checkbox"/>
<input checked="" type="checkbox"/>	<input checked="" type="checkbox"/>	<input checked="" type="checkbox"/>	<input checked="" type="checkbox"/>	<input checked="" type="checkbox"/>	<input checked="" type="checkbox"/>	<input checked="" type="checkbox"/>	<input checked="" type="checkbox"/>
<input checked="" type="checkbox"/>	<input checked="" type="checkbox"/>	<input checked="" type="checkbox"/>	<input checked="" type="checkbox"/>	<input checked="" type="checkbox"/>	<input checked="" type="checkbox"/>	<input checked="" type="checkbox"/>	<input checked="" type="checkbox"/>
<input checked="" type="checkbox"/>	<input checked="" type="checkbox"/>	<input checked="" type="checkbox"/>	<input checked="" type="checkbox"/>	<input checked="" type="checkbox"/>	<input checked="" type="checkbox"/>	<input checked="" type="checkbox"/>	<input checked="" type="checkbox"/>
<input checked="" type="checkbox"/>	<input checked="" type="checkbox"/>	<input checked="" type="checkbox"/>	<input checked="" type="checkbox"/>	<input checked="" type="checkbox"/>	<input checked="" type="checkbox"/>	<input checked="" type="checkbox"/>	<input checked="" type="checkbox"/>
<input checked="" type="checkbox"/>	<input checked="" type="checkbox"/>	<input checked="" type="checkbox"/>	<input checked="" type="checkbox"/>	<input checked="" type="checkbox"/>	<input checked="" type="checkbox"/>	<input checked="" type="checkbox"/>	<input checked="" type="checkbox"/>
<input checked="" type="checkbox"/>	<input checked="" type="checkbox"/>	<input checked="" type="checkbox"/>	<input checked="" type="checkbox"/>	<input checked="" type="checkbox"/>	<input checked="" type="checkbox"/>	<input checked="" type="checkbox"/>	<input checked="" type="checkbox"/>
<input checked="" type="checkbox"/>	<input checked="" type="checkbox"/>	<input checked="" type="checkbox"/>	<input checked="" type="checkbox"/>	<input checked="" type="checkbox"/>	<input checked="" type="checkbox"/>	<input checked="" type="checkbox"/>	<input checked="" type="checkbox"/>
<input checked="" type="checkbox"/>	<input checked="" type="checkbox"/>	<input checked="" type="checkbox"/>	<input checked="" type="checkbox"/>	<input checked="" type="checkbox"/>	<input checked="" type="checkbox"/>	<input checked="" type="checkbox"/>	<input checked="" type="checkbox"/>
<input checked="" type="checkbox"/>	<input checked="" type="checkbox"/>	<input checked="" type="checkbox"/>	<input checked="" type="checkbox"/>	<input checked="" type="checkbox"/>	<input checked="" type="checkbox"/>	<input checked="" type="checkbox"/>	<input checked="" type="checkbox"/>
<input checked="" type="checkbox"/>	<input checked="" type="checkbox"/>	<input checked="" type="checkbox"/>	<input checked="" type="checkbox"/>	<input checked="" type="checkbox"/>	<input checked="" type="checkbox"/>	<input checked="" type="checkbox"/>	<input checked="" type="checkbox"/>
<input checked="" type="checkbox"/>	<input checked="" type="checkbox"/>	<input checked="" type="checkbox"/>	<input checked="" type="checkbox"/>	<input checked="" type="checkbox"/>	<input checked="" type="checkbox"/>	<input checked="" type="checkbox"/>	<input checked="" type="checkbox"/>
<input checked="" type="checkbox"/>	<input checked="" type="checkbox"/>	<input checked="" type="checkbox"/>	<input checked="" type="checkbox"/>	<input checked="" type="checkbox"/>	<input checked="" type="checkbox"/>	<input checked="" type="checkbox"/>	<input checked="" type="checkbox"/>
<input checked="" type="checkbox"/>	<input checked="" type="checkbox"/>	<input checked="" type="checkbox"/>	<input checked="" type="checkbox"/>	<input checked="" type="checkbox"/>	<input checked="" type="checkbox"/>	<input checked="" type="checkbox"/>	<input checked="" type="checkbox"/>
<input checked="" type="checkbox"/>	<input checked="" type="checkbox"/>	<input checked="" type="checkbox"/>	<input checked="" type="checkbox"/>	<input checked="" type="checkbox"/>	<input checked="" type="checkbox"/>	<input checked="" type="checkbox"/>	<input checked="" type="checkbox"/>
<input checked="" type="checkbox"/>	<input checked="" type="checkbox"/>	<input checked="" type="checkbox"/>	<input checked="" type="checkbox"/>	<input checked="" type="checkbox"/>	<input checked="" type="checkbox"/>	<input checked="" type="checkbox"/>	<input checked="" type="checkbox"/>
<input checked="" type="checkbox"/>	<input checked="" type="checkbox"/>	<input checked="" type="checkbox"/>	<input checked="" type="checkbox"/>	<input checked="" type="checkbox"/>	<input checked="" type="checkbox"/>	<input checked="" type="checkbox"/>	<input checked="" type="checkbox"/>
<input checked="" type="checkbox"/>	<input checked="" type="checkbox"/>	<input checked="" type="checkbox"/>	<input checked="" type="checkbox"/>	<input checked="" type="checkbox"/>	<input checked="" type="checkbox"/>	<input checked="" type="checkbox"/>	<input checked="" type="checkbox"/>
<input checked="" type="checkbox"/>	<input checked="" type="checkbox"/>	<input checked="" type="checkbox"/>	<input checked="" type="checkbox"/>	<input checked="" type="checkbox"/>	<input checked="" type="checkbox"/>	<input checked="" type="checkbox"/>	<input checked="" type="checkbox"/>
<input checked="" type="checkbox"/>	<input checked="" type="checkbox"/>	<input checked="" type="checkbox"/>	<input checked="" type="checkbox"/>	<input checked="" type="checkbox"/>	<input checked="" type="checkbox"/>	<input checked="" type="checkbox"/>	<input checked="" type="checkbox"/>
<input checked="" type="checkbox"/>	<input checked="" type="checkbox"/>	<input checked="" type="checkbox"/>	<input checked="" type="checkbox"/>	<input checked="" type="checkbox"/>	<input checked="" type="checkbox"/>	<input checked="" type="checkbox"/>	<input checked="" type="checkbox"/>
<input checked="" type="checkbox"/>	<input checked="" type="checkbox"/>	<input checked="" type="checkbox"/>	<input checked="" type="checkbox"/>	<input checked="" type="checkbox"/>	<input checked="" type="checkbox"/>	<input checked="" type="checkbox"/>	<input checked="" type="checkbox"/>
<input checked="" type="checkbox"/>	<input checked="" type="checkbox"/>	<input checked="" type="checkbox"/>	<input checked="" type="checkbox"/>	<input checked="" type="checkbox"/>	<input checked="" type="checkbox"/>	<input checked="" type="checkbox"/>	<input checked="" type="checkbox"/>
<input checked="" type="checkbox"/>	<input checked="" type="checkbox"/>	<input checked="" type="checkbox"/>	<input checked="" type="checkbox"/>	<input checked="" type="checkbox"/>	<input checked="" type="checkbox"/>	<input checked="" type="checkbox"/>	<input checked="" type="checkbox"/>
<input checked="" type="checkbox"/>	<input checked="" type="checkbox"/>	<input checked="" type="checkbox"/>	<input checked="" type="checkbox"/>	<input checked="" type="checkbox"/>	<input checked="" type="checkbox"/>	<input checked="" type="checkbox"/>	<input checked="" type="checkbox"/>
<input checked="" type="checkbox"/>	<input checked="" type="checkbox"/>	<input checked="" type="checkbox"/>	<input checked="" type="checkbox"/>	<input checked="" type="checkbox"/>	<input checked="" type="checkbox"/>	<input checked="" type="checkbox"/>	<input checked="" type="checkbox"/>
<input checked="" type="checkbox"/>	<input checked="" type="checkbox"/>	<input checked="" type="checkbox"/>	<input checked="" type="checkbox"/>	<input checked="" type="checkbox"/>	<input checked="" type="checkbox"/>	<input checked="" type="checkbox"/>	<input checked="" type="checkbox"/>
<input checked="" type="checkbox"/>	<input checked="" type="checkbox"/>	<input checked="" type="checkbox"/>	<input checked="" type="checkbox"/>	<input checked="" type="checkbox"/>	<input checked="" type="checkbox"/>	<input checked="" type="checkbox"/>	<input checked="" type="checkbox"/>
<input checked="" type="checkbox"/>	<input checked="" type="checkbox"/>	<input checked="" type="checkbox"/>	<input checked="" type="checkbox"/>	<input checked="" type="checkbox"/>	<input checked="" type="checkbox"/>	<input checked="" type="checkbox"/>	<input checked="" type="checkbox"/>
<input checked="" type="checkbox"/>	<input checked="" type="checkbox"/>	<input checked="" type="checkbox"/>	<input checked="" type="checkbox"/>	<input checked="" type="checkbox"/>	<input checked="" type="checkbox"/>	<input checked="" type="checkbox"/>	<input checked="" type="checkbox"/>
<input checked="" type="checkbox"/>	<input checked="" type="checkbox"/>	<input checked="" type="checkbox"/>	<input checked="" type="checkbox"/>	<input checked="" type="checkbox"/>	<input checked="" type="checkbox"/>	<input checked="" type="checkbox"/>	<input checked="" type="checkbox"/>
<input checked="" type="checkbox"/>	<input checked="" type="checkbox"/>	<input checked="" type="checkbox"/>	<input checked="" type="checkbox"/>	<input checked="" type="checkbox"/>	<input checked="" type="checkbox"/>	<input checked="" type="checkbox"/>	<input checked="" type="checkbox"/>
<input checked="" type="checkbox"/>	<input checked="" type="checkbox"/>	<input checked="" type="checkbox"/>	<input checked="" type="checkbox"/>	<input checked="" type="checkbox"/>	<input checked="" type="checkbox"/>	<input checked="" type="checkbox"/>	<input checked="" type="checkbox"/>
<input checked="" type="checkbox"/>	<input checked="" type="checkbox"/>	<input checked="" type="checkbox"/>	<input checked="" type="checkbox"/>	<input checked="" type="checkbox"/>	<input checked="" type="checkbox"/>	<input checked="" type="checkbox"/>	<input checked="" type="checkbox"/>
<input checked="" type="checkbox"/>	<input checked="" type="checkbox"/>	<input checked="" type="checkbox"/>	<input checked="" type="checkbox"/>	<input checked="" type="checkbox"/>	<input checked="" type="checkbox"/>	<input checked="" type="checkbox"/>	<input checked="" type="checkbox"/>
<input checked="" type="checkbox"/>	<input checked="" type="checkbox"/>	<input checked="" type="checkbox"/>	<input checked="" type="checkbox"/>	<input checked="" type="checkbox"/>	<input checked="" type="checkbox"/>	<input checked="" type="checkbox"/>	<input checked="" type="checkbox"/>
<input checked="" type="checkbox"/>	<input checked="" type="checkbox"/>	<input checked="" type="checkbox"/>	<input checked="" type="checkbox"/>	<input checked="" type="checkbox"/>	<input checked="" type="checkbox"/>	<input checked="" type="checkbox"/>	<input checked="" type="checkbox"/>
<input checked="" type="checkbox"/>	<input checked="" type="checkbox"/>	<input checked="" type="checkbox"/>	<input checked="" type="checkbox"/>	<input checked="" type="checkbox"/>	<input checked="" type="checkbox"/>	<input checked="" type="checkbox"/>	<input checked="" type="checkbox"/>
<input checked="" type="checkbox"/>	<input checked="" type="checkbox"/>	<input checked="" type="checkbox"/>	<input checked="" type="checkbox"/>	<input checked="" type="checkbox"/>	<input checked="" type="checkbox"/>	<input checked="" type="checkbox"/>	<input checked="" type="checkbox"/>
<input checked="" type="checkbox"/>	<input checked="" type="checkbox"/>	<input checked="" type="checkbox"/>	<input checked="" type="checkbox"/>	<input checked="" type="checkbox"/>	<input checked="" type="checkbox"/>	<input checked="" type="checkbox"/>	<input checked="" type="checkbox"/>
<input checked="" type="checkbox"/>	<input checked="" type="checkbox"/>	<input checked="" type="checkbox"/>	<input checked="" type="checkbox"/>	<input checked="" type="checkbox"/>	<input checked="" type="checkbox"/>	<input checked="" type="checkbox"/>	<input checked="" type="checkbox"/>
<input checked="" type="checkbox"/>	<input checked="" type="checkbox"/>	<input checked="" type="checkbox"/>	<input checked="" type="checkbox"/>	<input checked="" type="checkbox"/>	<input checked="" type="checkbox"/>	<input checked="" type="checkbox"/>	<input checked="" type="checkbox"/>
<input checked="" type="checkbox"/>	<input checked="" type="checkbox"/>	<input checked="" type="checkbox"/>	<input checked="" type="checkbox"/>	<input checked="" type="checkbox"/>	<input checked="" type="checkbox"/>	<input checked="" type="checkbox"/>	<input checked="" type="checkbox"/>
<input checked="" type="checkbox"/>	<input checked="" type="checkbox"/>	<input checked="" type="checkbox"/>	<input checked="" type="checkbox"/>	<input checked="" type="checkbox"/>	<input checked="" type="checkbox"/>	<input checked="" type="checkbox"/>	<input checked="" type="checkbox"/>
<input checked="" type="checkbox"/>	<input checked="" type="checkbox"/>	<input checked="" type="checkbox"/>	<input checked="" type="checkbox"/>	<input checked="" type="checkbox"/>	<input checked="" type="checkbox"/>	<input checked="" type="checkbox"/>	<input checked="" type="checkbox"/>
<input checked="" type="checkbox"/>	<input checked="" type="checkbox"/>	<input checked="" type="checkbox"/>	<input checked="" type="checkbox"/>	<input checked="" type="checkbox"/>	<input checked="" type="checkbox"/>	<input checked="" type="checkbox"/>	<input checked="" type="checkbox"/>
<input checked="" type="checkbox"/>	<input checked="" type="checkbox"/>	<input checked="" type="checkbox"/>	<input checked="" type="checkbox"/>	<input checked="" type="checkbox"/>	<input checked="" type="checkbox"/>	<input checked="" type="checkbox"/>	<input checked="" type="checkbox"/>
<input checked="" type="checkbox"/>	<input checked="" type="checkbox"/>	<input checked="" type="checkbox"/>	<input checked="" type="checkbox"/>	<input checked="" type="checkbox"/>	<input checked="" type="checkbox"/>	<input checked="" type="checkbox"/>	<input checked="" type="checkbox"/>
<input checked="" type="checkbox"/>	<input checked="" type="checkbox"/>	<input checked="" type="checkbox"/>	<input checked="" type="checkbox"/>	<input checked="" type="checkbox"/>	<input checked="" type="checkbox"/>	<input checked="" type="checkbox"/>	<input checked="" type="checkbox"/>
<input checked="" type="checkbox"/>	<input checked="" type="checkbox"/>	<input checked="" type="checkbox"/>	<input checked="" type="checkbox"/>	<input checked="" type="checkbox"/>	<input checked="" type="checkbox"/>	<input checked="" type="checkbox"/>	<input checked="" type="checkbox"/>
<input checked="" type="checkbox"/>	<input checked="" type="checkbox"/>	<input checked="" type="checkbox"/>	<input checked="" type="checkbox"/>	<input checked="" type="checkbox"/>	<input checked="" type="checkbox"/>	<input checked="" type="checkbox"/>	<input checked="" type="checkbox"/>
<input checked="" type="checkbox"/>	<input checked="" type="checkbox"/>	<input checked="" type="checkbox"/>	<input checked="" type="checkbox"/>	<input checked="" type="checkbox"/>	<input checked="" type="checkbox"/>	<input checked="" type="checkbox"/>	<input checked="" type="checkbox"/>
<input checked="" type="checkbox"/>	<input checked="" type="checkbox"/>	<input checked="" type="checkbox"/>	<input checked="" type="checkbox"/>	<input checked="" type="checkbox"/>	<input checked="" type="checkbox"/>	<input checked="" type="checkbox"/>	<input checked="" type="checkbox"/>
<input checked="" type="checkbox"/>	<input checked="" type="checkbox"/>	<input checked="" type="checkbox"/>	<input checked="" type="checkbox"/>	<input checked="" type="checkbox"/>	<input checked="" type="checkbox"/>	<input checked="" type="checkbox"/>	<input checked="" type="checkbox"/>
<input checked="" type="checkbox"/>	<input checked="" type="checkbox"/>	<input checked="" type="checkbox"/>	<input checked="" type="checkbox"/>	<input checked="" type="checkbox"/>	<input checked="" type="checkbox"/>	<input checked="" type="checkbox"/>	<input checked="" type="checkbox"/>
<input checked="" type="checkbox"/>	<input checked="" type="checkbox"/>	<input checked="" type="checkbox"/>	<input checked="" type="checkbox"/>	<input checked="" type="checkbox"/>	<input checked="" type="checkbox"/>	<input checked="" type="checkbox"/>	<input checked="" type="checkbox"/>
<input checked="" type="checkbox"/>	<input checked="" type="checkbox"/>	<input checked="" type="checkbox"/>	<input checked="" type="checkbox"/>	<input checked="" type="checkbox"/>	<input checked="" type="checkbox"/>	<input checked="" type="checkbox"/>	<input checked="" type="checkbox"/>
<input checked="" type="checkbox"/>	<input checked="" type="checkbox"/>	<input checked="" type="checkbox"/>	<input checked="" type="checkbox"/>	<input checked="" type="checkbox"/>	<input checked="" type="checkbox"/>	<input checked="" type="checkbox"/>	<input checked="" type="checkbox"/>
<input checked="" type="checkbox"/>	<input checked="" type="checkbox"/>	<input checked="" type="checkbox"/>	<input checked="" type="checkbox"/>	<input checked="" type="checkbox"/>	<input checked="" type="checkbox"/>	<input checked="" type="checkbox"/>	<input checked="" type="checkbox"/>
<input checked="" type="checkbox"/>	<input checked="" type="checkbox"/>	<input checked="" type="checkbox"/>	<input checked="" type="checkbox"/>	<input checked="" type="checkbox"/>	<input checked="" type="checkbox"/>	<input checked="" type="checkbox"/>	<input checked="" type="checkbox"/>
<input checked="" type="checkbox"/>	<input checked="" type="checkbox"/>	<input checked="" type="checkbox"/>	<input checked="" type="checkbox"/>	<input checked="" type="checkbox"/>	<input checked="" type="checkbox"/>	<input checked="" type="checkbox"/>	<input checked="" type="checkbox"/>
<input checked="" type="checkbox"/>	<input checked="" type="checkbox"/>	<input checked="" type="checkbox"/>	<input checked="" type="checkbox"/>	<input checked="" type="checkbox"/>	<input checked="" type="checkbox"/>	<input checked="" type="checkbox"/>	<input checked="" type="checkbox"/>
<input checked="" type="checkbox"/>	<input checked="" type="checkbox"/>	<input checked="" type="checkbox"/>	<input checked="" type="checkbox"/>	<input checked="" type="checkbox"/>	<input checked="" type="checkbox"/>	<input checked="" type="checkbox"/>	<input checked="" type="checkbox"/>
<input checked="" type="checkbox"/>	<input checked="" type="checkbox"/>	<input checked="" type="checkbox"/>	<input checked="" type="checkbox"/>	<input checked="" type="checkbox"/>	<input checked="" type="checkbox"/>	<input checked="" type="checkbox"/>	<input checked="" type="checkbox"/>
<input checked="" type="checkbox"/>	<input checked="" type="checkbox"/>	<input checked="" type="checkbox"/>	<input checked="" type="checkbox"/>	<input checked="" type="checkbox"/>	<input checked="" type="checkbox"/>	<input checked="" type="checkbox"/>	<input checked="" type="checkbox"/>
<input checked="" type="checkbox"/>	<input checked="" type="checkbox"/>	<input checked="" type="checkbox"/>	<input checked="" type="checkbox"/>	<input checked="" type="checkbox"/>	<input checked="" type="checkbox"/>	<input checked="" type="checkbox"/>	<input checked="" type="checkbox"/>
<input checked="" type="checkbox"/>	<input checked="" type="checkbox"/>	<input checked="" type="checkbox"/>	<input checked="" type="checkbox"/>	<input checked="" type="checkbox"/>	<input checked="" type="checkbox"/>	<input checked="" type="checkbox"/>	<input checked="" type="checkbox"/>
<input checked="" type="checkbox"/>	<input checked="" type="checkbox"/>	<input checked="" type="checkbox"/>	<input checked="" type="checkbox"/>	<input checked="" type="checkbox"/>	<input checked="" type="checkbox"/>	<input checked="" type="checkbox"/>	<input checked="" type="checkbox"/>
<input checked="" type="checkbox"/>	<input checked="" type="checkbox"/>	<input checked="" type="checkbox"/>	<input checked="" type="checkbox"/>	<input checked="" type="checkbox"/>	<input checked="" type="checkbox"/>	<input checked="" type="checkbox"/>	<input checked="" type="checkbox"/>
<input checked="" type="checkbox"/>	<input checked="" type="checkbox"/>	<input checked="" type="checkbox"/>	<input checked="" type="checkbox"/>	<input checked="" type="checkbox"/>	<input checked="" type="checkbox"/>	<input checked="" type="checkbox"/>	<input checked="" type="checkbox"/>
<input checked="" type="checkbox"/>	<input checked="" type="checkbox"/>	<input checked="" type="checkbox"/>	<input checked="" type="checkbox"/>	<input checked="" type="checkbox"/>	<input checked="" type="checkbox"/>	<input checked="" type="checkbox"/>	<input checked="" type="checkbox"/>
<input checked="" type="checkbox"/>	<input checked="" type="checkbox"/>	<input checked="" type="checkbox"/>	<input checked="" type="checkbox"/>	<input checked="" type="checkbox"/>	<input checked="" type="checkbox"/>	<input checked="" type="checkbox"/>	<input checked="" type="checkbox"/>
<input checked="" type="checkbox"/>	<input checked="" type="checkbox"/>	<input checked="" type="checkbox"/>	<input checked="" type="checkbox"/>	<input checked="" type="checkbox"/>	<input checked="" type="checkbox"/>	<input checked="" type="checkbox"/>	<input checked="" type="checkbox"/>
<input checked="" type="checkbox"/>	<input checked="" type="checkbox"/>	<input checked="" type="checkbox"/>	<input checked="" type="checkbox"/>	<input checked="" type="checkbox"/>	<input checked="" type="checkbox"/>	<input checked="" type="checkbox"/>	<input checked="" type="checkbox"/>
<input checked="" type="checkbox"/>	<input checked="" type="checkbox"/>	<input checked="" type="checkbox"/>	<input checked="" type="checkbox"/>	<input checked="" type="checkbox"/>	<input checked="" type="checkbox"/>	<input checked="" type="checkbox"/>	<input checked="" type="checkbox"/>
<input checked="" type="checkbox"/>	<input checked="" type="checkbox"/>	<input checked="" type="checkbox"/>	<input checked="" type="checkbox"/>	<input checked="" type="checkbox"/>	<input checked="" type="checkbox"/>	<input checked="" type="checkbox"/>	<input checked="" type="checkbox"/>
<input checked="" type="checkbox"/>	<input checked="" type="checkbox"/>	<input checked="" type="checkbox"/>	<input checked="" type="checkbox"/>	<input checked="" type="checkbox"/>	<input checked="" type="checkbox"/>	<input checked="" type="checkbox"/>	<input checked="" type="checkbox"/>
<input checked="" type="checkbox"/>	<input checked="" type="checkbox"/>	<input checked="" type="checkbox"/>	<input checked="" type="checkbox"/>	<input checked="" type="checkbox"/>	<input checked="" type="checkbox"/>	<input checked="" type="checkbox"/>	<input checked="" type="checkbox"/>
<input checked="" type="checkbox"/>	<input checked="" type="checkbox"/>	<input checked="" type="checkbox"/>	<input checked="" type="checkbox"/>	<input checked="" type="checkbox"/>	<input checked="" type="checkbox"/>	<input checked="" type="checkbox"/>	<input checked="" type="checkbox"/>
<input checked="" type="checkbox"/>	<input checked="" type="checkbox"/>	<input checked="" type="checkbox"/>	<input checked="" type="checkbox"/>	<input checked="" type="checkbox"/>	<input checked="" type="checkbox"/>	<input checked="" type="checkbox"/>	<input checked="" type="checkbox"/>
<input checked="" type="checkbox"/>	<input checked="" type="checkbox"/>	<input checked="" type="checkbox"/>	<input checked="" type="checkbox"/>	<input checked="" type="checkbox"/>	<input checked="" type="checkbox"/>	<input checked="" type="checkbox"/>	<input checked="" type="checkbox"/>
<input checked="" type="checkbox"/>	<input checked="" type="checkbox"/>	<input checked="" type="checkbox"/>	<input checked="" type="checkbox"/>	<input checked="" type="checkbox"/>	<input checked="" type="checkbox"/>	<input checked="" type="checkbox"/>	<input checked="" type="checkbox"/>
<input checked="" type="checkbox"/>	<input checked="" type="checkbox"/>	<input checked="" type="checkbox"/>	<input checked="" type="checkbox"/>	<input checked="" type="checkbox"/>	<input checked="" type="checkbox"/>	<input checked="" type="checkbox"/>	<input checked="" type="checkbox"/>
<input checked="" type="checkbox"/>	<input checked="" type="checkbox"/>	<input checked="" type="checkbox"/>	<input checked="" type="checkbox"/>	<input checked="" type="checkbox"/>	<input checked="" type="checkbox"/>	<input checked="" type="checkbox"/>	<input checked="" type="checkbox"/>
<input checked="" type="checkbox"/>	<input checked="" type="checkbox"/>	<input checked="" type="checkbox"/>	<input checked="" type="checkbox"/>	<input checked="" type="checkbox"/>	<input checked="" type="checkbox"/>	<input checked="" type="checkbox"/>	<input checked="" type="checkbox"/>
<input checked="" type="checkbox"/>	<input checked="" type="checkbox"/>	<input checked="" type="checkbox"/>	<input checked="" type="checkbox"/>	<input checked="" type="checkbox"/>	<input checked="" type="checkbox"/>	<input checked="" type="checkbox"/>	<input checked="" type="checkbox"/>
<input checked="" type="checkbox"/>	<input checked="" type="checkbox"/>	<input checked="" type="checkbox"/>	<input checked="" type="checkbox"/>	<input checked="" type="checkbox"/>	<input checked="" type="checkbox"/>	<input checked="" type="checkbox"/>	<input checked="" type="checkbox"/>
<input checked="" type="checkbox"/>	<input checked="" type="checkbox"/>	<input checked="" type="checkbox"/>	<input checked="" type="checkbox"/>	<input checked="" type="checkbox"/>	<input checked="" type="checkbox"/>	<input checked="" type="checkbox"/>	<input checked="" type="checkbox"/>
<input checked="" type="checkbox"/>	<input checked="" type="checkbox"/>	<input checked="" type="checkbox"/>	<input checked="" type="checkbox"/>	<input checked="" type="checkbox"/>	<input checked="" type="checkbox"/>	<input checked="" type="checkbox"/>	<input checked="" type="checkbox"/>
<input checked="" type="checkbox"/>	<input checked="" type="checkbox"/>	<input checked="" type="checkbox"/>	<input checked="" type="checkbox"/>	<input checked="" type="checkbox"/>	<input checked="" type="checkbox"/>	<input checked="" type="checkbox"/>	<input checked="" type="checkbox"/>
<input checked="" type="checkbox"/>	<input checked="" type="checkbox"/>	<input checked="" type="checkbox"/>	<input checked="" type="checkbox"/>	<input checked="" type="checkbox"/>	<input checked="" type="checkbox"/>	<input checked="" type="checkbox"/>	<input checked="" type="checkbox"/>
<input checked="" type="checkbox"/>	<input checked="" type="checkbox"/>	<input checked="" type="checkbox"/>	<input checked="" type="checkbox"/>	<input checked="" type="checkbox"/>	<input checked="" type="checkbox"/>	<input checked="" type="checkbox"/>	<input checked="" type="checkbox"/>
<input checked="" type="checkbox"/>	<						

**CONDITIONS OF DEVELOPMENT CONSENT SSD 6339
ST CATHERINE'S SCHOOL
INCORPORATING MOD 1 (31.7.2018) AND MOD2 (1.9.2019)**

- COMPLIANCE WILL BE SATISFIED DURING STAGE
- COMPLIANCE WILL NOT BE SATISFIED DURING STAGE
- COMPLIANCE WILL BE SATISFIED POST OCCUPATION OF STAGE

PART C PRIOR TO COMMENCEMENT OF WORKS

- C.1** Demolition Works shall comply with AS 2601:2001 & associated works plans prepared by qualified persons shall comply.
- C.2** PCA and Council shall be given at least 48 Hours notice prior to the commencement of building works.
- C.3** Applicant must supply a copy of the OC to the department of Planning and the Council.
- C.4** A Construction Environmental management Plan (CEMP) shall be submitted and approved by the Secretary.
- C.5** The CEMP must not include works that have not been explicitly approved in the Development Consent.
- C.6** Applicant must supply a copy of the CEMP to Council prior to the commencement of work.
- C.6 A** Where the project is to be staged, a Staging Report must be submitted for the approval of the Planning Secretary.
- C.6 B a)** Staging report to set out how the construction of the whole of the project will be staged
- C.6 B b)** Staging report to set out how the construction of the operation of the project will be staged
- C.6 B c)** Staging report to set out how compliance with conditions will be achieved across and between each stage
- C.6 B d)** Staging report to set out mechanisms for managing any cumulative impacts arising from the proposed staging
- C.6 C** The project must be staged in accordance with the staging plan approved by the Secretary
- C.6 D** Terms of approval for each stage must be complied with at the relevant time for that stage.
- C.7** A Traffic and Pedestrian Management Plan (TMP) must be prepared and submitted to the P.C.A. for approval.
- C.8** A Construction Noise and Vibration Management Plan must be prepared and submitted to the P.C.A. for approval.
- C.9** A Construction Waste Management Plan must be prepared and submitted to the P.C.A. for approval.
- C.10** The applicant to negotiate with utility authorities in connection with the relocation and/or adjustment of services affected.
- C.11** PCA to receive written advice from Electrical, Telecoms and gas carrier confirming adequate arrangements in place.

STAGE 1 (A) STAGE 1 (A) STAGE 1 (B) STAGE 2 STAGE 3 STAGE 4 STAGE 5

	Part 1	Part 2					
<input checked="" type="checkbox"/>	<input checked="" type="checkbox"/>	<input checked="" type="checkbox"/>	<input checked="" type="checkbox"/>	<input checked="" type="checkbox"/>	<input checked="" type="checkbox"/>	<input checked="" type="checkbox"/>	<input checked="" type="checkbox"/>
<input checked="" type="checkbox"/>	<input checked="" type="checkbox"/>	<input checked="" type="checkbox"/>	<input checked="" type="checkbox"/>	<input checked="" type="checkbox"/>	<input checked="" type="checkbox"/>	<input checked="" type="checkbox"/>	<input checked="" type="checkbox"/>
<input checked="" type="checkbox"/>	<input checked="" type="checkbox"/>	<input checked="" type="checkbox"/>	<input checked="" type="checkbox"/>	<input checked="" type="checkbox"/>	<input checked="" type="checkbox"/>	<input checked="" type="checkbox"/>	<input checked="" type="checkbox"/>
<input checked="" type="checkbox"/>	<input checked="" type="checkbox"/>	<input checked="" type="checkbox"/>	<input checked="" type="checkbox"/>	<input checked="" type="checkbox"/>	<input checked="" type="checkbox"/>	<input checked="" type="checkbox"/>	<input checked="" type="checkbox"/>
<input checked="" type="checkbox"/>	<input checked="" type="checkbox"/>	<input checked="" type="checkbox"/>	<input checked="" type="checkbox"/>	<input checked="" type="checkbox"/>	<input checked="" type="checkbox"/>	<input checked="" type="checkbox"/>	<input checked="" type="checkbox"/>
<input checked="" type="checkbox"/>	<input checked="" type="checkbox"/>	<input checked="" type="checkbox"/>	<input checked="" type="checkbox"/>	<input checked="" type="checkbox"/>	<input checked="" type="checkbox"/>	<input checked="" type="checkbox"/>	<input checked="" type="checkbox"/>
<input checked="" type="checkbox"/>	<input checked="" type="checkbox"/>	<input checked="" type="checkbox"/>	<input checked="" type="checkbox"/>	<input checked="" type="checkbox"/>	<input checked="" type="checkbox"/>	<input checked="" type="checkbox"/>	<input checked="" type="checkbox"/>
<input checked="" type="checkbox"/>	<input checked="" type="checkbox"/>	<input checked="" type="checkbox"/>	<input checked="" type="checkbox"/>	<input checked="" type="checkbox"/>	<input checked="" type="checkbox"/>	<input checked="" type="checkbox"/>	<input checked="" type="checkbox"/>
<input checked="" type="checkbox"/>	<input checked="" type="checkbox"/>	<input checked="" type="checkbox"/>	<input checked="" type="checkbox"/>	<input checked="" type="checkbox"/>	<input checked="" type="checkbox"/>	<input checked="" type="checkbox"/>	<input checked="" type="checkbox"/>
<input checked="" type="checkbox"/>	<input checked="" type="checkbox"/>	<input checked="" type="checkbox"/>	<input checked="" type="checkbox"/>	<input checked="" type="checkbox"/>	<input checked="" type="checkbox"/>	<input checked="" type="checkbox"/>	<input checked="" type="checkbox"/>
<input checked="" type="checkbox"/>	<input checked="" type="checkbox"/>	<input checked="" type="checkbox"/>	<input checked="" type="checkbox"/>	<input checked="" type="checkbox"/>	<input checked="" type="checkbox"/>	<input checked="" type="checkbox"/>	<input checked="" type="checkbox"/>
<input checked="" type="checkbox"/>	<input checked="" type="checkbox"/>	<input checked="" type="checkbox"/>	<input checked="" type="checkbox"/>	<input checked="" type="checkbox"/>	<input checked="" type="checkbox"/>	<input checked="" type="checkbox"/>	<input checked="" type="checkbox"/>
<input checked="" type="checkbox"/>	<input checked="" type="checkbox"/>	<input checked="" type="checkbox"/>	<input checked="" type="checkbox"/>	<input checked="" type="checkbox"/>	<input checked="" type="checkbox"/>	<input checked="" type="checkbox"/>	<input checked="" type="checkbox"/>
<input checked="" type="checkbox"/>	<input checked="" type="checkbox"/>	<input checked="" type="checkbox"/>	<input checked="" type="checkbox"/>	<input checked="" type="checkbox"/>	<input checked="" type="checkbox"/>	<input checked="" type="checkbox"/>	<input checked="" type="checkbox"/>
<input checked="" type="checkbox"/>	<input checked="" type="checkbox"/>	<input checked="" type="checkbox"/>	<input checked="" type="checkbox"/>	<input checked="" type="checkbox"/>	<input checked="" type="checkbox"/>	<input checked="" type="checkbox"/>	<input checked="" type="checkbox"/>
<input checked="" type="checkbox"/>	<input checked="" type="checkbox"/>	<input checked="" type="checkbox"/>	<input checked="" type="checkbox"/>	<input checked="" type="checkbox"/>	<input checked="" type="checkbox"/>	<input checked="" type="checkbox"/>	<input checked="" type="checkbox"/>
<input checked="" type="checkbox"/>	<input checked="" type="checkbox"/>	<input checked="" type="checkbox"/>	<input checked="" type="checkbox"/>	<input checked="" type="checkbox"/>	<input checked="" type="checkbox"/>	<input checked="" type="checkbox"/>	<input checked="" type="checkbox"/>
<input checked="" type="checkbox"/>	<input checked="" type="checkbox"/>	<input checked="" type="checkbox"/>	<input checked="" type="checkbox"/>	<input checked="" type="checkbox"/>	<input checked="" type="checkbox"/>	<input checked="" type="checkbox"/>	<input checked="" type="checkbox"/>
<input checked="" type="checkbox"/>	<input checked="" type="checkbox"/>	<input checked="" type="checkbox"/>	<input checked="" type="checkbox"/>	<input checked="" type="checkbox"/>	<input checked="" type="checkbox"/>	<input checked="" type="checkbox"/>	<input checked="" type="checkbox"/>
<input checked="" type="checkbox"/>	<input checked="" type="checkbox"/>	<input checked="" type="checkbox"/>	<input checked="" type="checkbox"/>	<input checked="" type="checkbox"/>	<input checked="" type="checkbox"/>	<input checked="" type="checkbox"/>	<input checked="" type="checkbox"/>
<input checked="" type="checkbox"/>	<input checked="" type="checkbox"/>	<input checked="" type="checkbox"/>	<input checked="" type="checkbox"/>	<input checked="" type="checkbox"/>	<input checked="" type="checkbox"/>	<input checked="" type="checkbox"/>	<input checked="" type="checkbox"/>
<input checked="" type="checkbox"/>	<input checked="" type="checkbox"/>	<input checked="" type="checkbox"/>	<input checked="" type="checkbox"/>	<input checked="" type="checkbox"/>	<input checked="" type="checkbox"/>	<input checked="" type="checkbox"/>	<input checked="" type="checkbox"/>
<input checked="" type="checkbox"/>	<input checked="" type="checkbox"/>	<input checked="" type="checkbox"/>	<input checked="" type="checkbox"/>	<input checked="" type="checkbox"/>	<input checked="" type="checkbox"/>	<input checked="" type="checkbox"/>	<input checked="" type="checkbox"/>
<input checked="" type="checkbox"/>	<input checked="" type="checkbox"/>	<input checked="" type="checkbox"/>	<input checked="" type="checkbox"/>	<input checked="" type="checkbox"/>	<input checked="" type="checkbox"/>	<input checked="" type="checkbox"/>	<input checked="" type="checkbox"/>
<input checked="" type="checkbox"/>	<input checked="" type="checkbox"/>	<input checked="" type="checkbox"/>	<input checked="" type="checkbox"/>	<input checked="" type="checkbox"/>	<input checked="" type="checkbox"/>	<input checked="" type="checkbox"/>	<input checked="" type="checkbox"/>
<input checked="" type="checkbox"/>	<input checked="" type="checkbox"/>	<input checked="" type="checkbox"/>	<input checked="" type="checkbox"/>	<input checked="" type="checkbox"/>	<input checked="" type="checkbox"/>	<input checked="" type="checkbox"/>	<input checked="" type="checkbox"/>
<input checked="" type="checkbox"/>	<input checked="" type="checkbox"/>	<input checked="" type="checkbox"/>	<input checked="" type="checkbox"/>	<input checked="" type="checkbox"/>	<input checked="" type="checkbox"/>	<input checked="" type="checkbox"/>	<input checked="" type="checkbox"/>
<input checked="" type="checkbox"/>	<input checked="" type="checkbox"/>	<input checked="" type="checkbox"/>	<input checked="" type="checkbox"/>	<input checked="" type="checkbox"/>	<input checked="" type="checkbox"/>	<input checked="" type="checkbox"/>	<input checked="" type="checkbox"/>
<input checked="" type="checkbox"/>	<input checked="" type="checkbox"/>	<input checked="" type="checkbox"/>	<input checked="" type="checkbox"/>	<input checked="" type="checkbox"/>	<input checked="" type="checkbox"/>	<input checked="" type="checkbox"/>	<input checked="" type="checkbox"/>
<input checked="" type="checkbox"/>	<input checked="" type="checkbox"/>	<input checked="" type="checkbox"/>	<input checked="" type="checkbox"/>	<input checked="" type="checkbox"/>	<input checked="" type="checkbox"/>	<input checked="" type="checkbox"/>	<input checked="" type="checkbox"/>
<input checked="" type="checkbox"/>	<input checked="" type="checkbox"/>	<input checked="" type="checkbox"/>	<input checked="" type="checkbox"/>	<input checked="" type="checkbox"/>	<input checked="" type="checkbox"/>	<input checked="" type="checkbox"/>	<input checked="" type="checkbox"/>
<input checked="" type="checkbox"/>	<input checked="" type="checkbox"/>	<input checked="" type="checkbox"/>	<input checked="" type="checkbox"/>	<input checked="" type="checkbox"/>	<input checked="" type="checkbox"/>	<input checked="" type="checkbox"/>	<input checked="" type="checkbox"/>
<input checked="" type="checkbox"/>	<input checked="" type="checkbox"/>	<input checked="" type="checkbox"/>	<input checked="" type="checkbox"/>	<input checked="" type="checkbox"/>	<input checked="" type="checkbox"/>	<input checked="" type="checkbox"/>	<input checked="" type="checkbox"/>
<input checked="" type="checkbox"/>	<input checked="" type="checkbox"/>	<input checked="" type="checkbox"/>	<input checked="" type="checkbox"/>	<input checked="" type="checkbox"/>	<input checked="" type="checkbox"/>	<input checked="" type="checkbox"/>	<input checked="" type="checkbox"/>
<input checked="" type="checkbox"/>	<input checked="" type="checkbox"/>	<input checked="" type="checkbox"/>	<input checked="" type="checkbox"/>	<input checked="" type="checkbox"/>	<input checked="" type="checkbox"/>	<input checked="" type="checkbox"/>	<input checked="" type="checkbox"/>
<input checked="" type="checkbox"/>	<input checked="" type="checkbox"/>	<input checked="" type="checkbox"/>	<input checked="" type="checkbox"/>	<input checked="" type="checkbox"/>	<input checked="" type="checkbox"/>	<input checked="" type="checkbox"/>	<input checked="" type="checkbox"/>
<input checked="" type="checkbox"/>	<input checked="" type="checkbox"/>	<input checked="" type="checkbox"/>	<input checked="" type="checkbox"/>	<input checked="" type="checkbox"/>	<input checked="" type="checkbox"/>	<input checked="" type="checkbox"/>	<input checked="" type="checkbox"/>
<input checked="" type="checkbox"/>	<input checked="" type="checkbox"/>	<input checked="" type="checkbox"/>	<input checked="" type="checkbox"/>	<input checked="" type="checkbox"/>	<input checked="" type="checkbox"/>	<input checked="" type="checkbox"/>	<input checked="" type="checkbox"/>
<input checked="" type="checkbox"/>	<input checked="" type="checkbox"/>	<input checked="" type="checkbox"/>	<input checked="" type="checkbox"/>	<input checked="" type="checkbox"/>	<input checked="" type="checkbox"/>	<input checked="" type="checkbox"/>	<input checked="" type="checkbox"/>
<input checked="" type="checkbox"/>	<input checked="" type="checkbox"/>	<input checked="" type="checkbox"/>	<input checked="" type="checkbox"/>	<input checked="" type="checkbox"/>	<input checked="" type="checkbox"/>	<input checked="" type="checkbox"/>	<input checked="" type="checkbox"/>
<input checked="" type="checkbox"/>	<input checked="" type="checkbox"/>	<input checked="" type="checkbox"/>	<input checked="" type="checkbox"/>	<input checked="" type="checkbox"/>	<input checked="" type="checkbox"/>	<input checked="" type="checkbox"/>	<input checked="" type="checkbox"/>
<input checked="" type="checkbox"/>	<input checked="" type="checkbox"/>	<input checked="" type="checkbox"/>	<input checked="" type="checkbox"/>	<input checked="" type="checkbox"/>	<input checked="" type="checkbox"/>	<input checked="" type="checkbox"/>	<input checked="" type="checkbox"/>
<input checked="" type="checkbox"/>	<input checked="" type="checkbox"/>	<input checked="" type="checkbox"/>	<input checked="" type="checkbox"/>	<input checked="" type="checkbox"/>	<input checked="" type="checkbox"/>	<input checked="" type="checkbox"/>	<input checked="" type="checkbox"/>
<input checked="" type="checkbox"/>	<input checked="" type="checkbox"/>	<input checked="" type="checkbox"/>	<input checked="" type="checkbox"/>	<input checked="" type="checkbox"/>	<input checked="" type="checkbox"/>	<input checked="" type="checkbox"/>	<input checked="" type="checkbox"/>
<input checked="" type="checkbox"/>	<input checked="" type="checkbox"/>	<input checked="" type="checkbox"/>	<input checked="" type="checkbox"/>	<input checked="" type="checkbox"/>	<input checked="" type="checkbox"/>	<input checked="" type="checkbox"/>	<input checked="" type="checkbox"/>
<input checked="" type="checkbox"/>	<input checked="" type="checkbox"/>	<input checked="" type="checkbox"/>	<input checked="" type="checkbox"/>	<input checked="" type="checkbox"/>	<input checked="" type="checkbox"/>	<input checked="" type="checkbox"/>	<input checked="" type="checkbox"/>
<input checked="" type="checkbox"/>	<input checked="" type="checkbox"/>	<input checked="" type="checkbox"/>	<input checked="" type="checkbox"/>	<input checked="" type="checkbox"/>	<input checked="" type="checkbox"/>	<input checked="" type="checkbox"/>	<input checked="" type="checkbox"/>
<input checked="" type="checkbox"/>	<input checked="" type="checkbox"/>	<input checked="" type="checkbox"/>	<input checked="" type="checkbox"/>	<input checked="" type="checkbox"/>	<input checked="" type="checkbox"/>	<input checked="" type="checkbox"/>	<input checked="" type="checkbox"/>
<input checked="" type="checkbox"/>	<input checked="" type="checkbox"/>	<input checked="" type="checkbox"/>	<input checked="" type="checkbox"/>	<input checked="" type="checkbox"/>	<input checked="" type="checkbox"/>	<input checked="" type="checkbox"/>	<input checked="" type="checkbox"/>
<input checked="" type="checkbox"/>	<input checked="" type="checkbox"/>	<input checked="" type="checkbox"/>	<input checked="" type="checkbox"/>	<input checked="" type="checkbox"/>	<input checked="" type="checkbox"/>	<input checked="" type="checkbox"/>	<input checked="" type="checkbox"/>
<input checked="" type="checkbox"/>	<input checked="" type="checkbox"/>	<input checked="" type="checkbox"/>	<input checked="" type="checkbox"/>	<input checked="" type="checkbox"/>	<input checked="" type="checkbox"/>	<input checked="" type="checkbox"/>	<input checked="" type="checkbox"/>
<input checked="" type="checkbox"/>	<input checked="" type="checkbox"/>	<input checked="" type="checkbox"/>	<input checked="" type="checkbox"/>	<input checked="" type="checkbox"/>	<input checked="" type="checkbox"/>	<input checked="" type="checkbox"/>	<input checked="" type="checkbox"/>
<input checked="" type="checkbox"/>	<input checked="" type="checkbox"/>	<input checked="" type="checkbox"/>	<input checked="" type="checkbox"/>	<input checked="" type="checkbox"/>	<input checked="" type="checkbox"/>	<input checked="" type="checkbox"/>	<input checked="" type="checkbox"/>
<input checked="" type="checkbox"/>	<input checked="" type="checkbox"/>	<input checked="" type="checkbox"/>	<input checked="" type="checkbox"/>	<input checked="" type="checkbox"/>	<input checked="" type="checkbox"/>	<input checked="" type="checkbox"/>	<input checked="" type="checkbox"/>
<input checked="" type="checkbox"/>	<input checked="" type="checkbox"/>	<input checked="" type="checkbox"/>	<input checked="" type="checkbox"/>	<input checked="" type="checkbox"/>	<input checked="" type="checkbox"/>	<input checked="" type="checkbox"/>	<input checked="" type="checkbox"/>
<input checked="" type="checkbox"/>	<input checked="" type="checkbox"/>	<input checked="" type="checkbox"/>	<input checked="" type="checkbox"/>	<input checked="" type="checkbox"/>	<input checked="" type="checkbox"/>	<input checked="" type="checkbox"/>	<input checked="" type="checkbox"/>
<input checked="" type="checkbox"/>	<input checked="" type="checkbox"/>	<input checked="" type="checkbox"/>	<input checked="" type="checkbox"/>	<input checked="" type="checkbox"/>	<input checked="" type="checkbox"/>	<input checked="" type="checkbox"/>	<input checked="" type="checkbox"/>
<input checked="" type="checkbox"/>	<input checked="" type="checkbox"/>	<input checked="" type="checkbox"/>	<input checked="" type="checkbox"/>	<input checked="" type="checkbox"/>	<input checked="" type="checkbox"/>	<input checked="" type="checkbox"/>	<input checked="" type="checkbox"/>
<input checked="" type="checkbox"/>	<input checked="" type="checkbox"/>	<input checked="" type="checkbox"/>	<input checked="" type="checkbox"/>	<input checked="" type="checkbox"/>	<input checked="" type="checkbox"/>	<input checked="" type="checkbox"/>	<input checked="" type="checkbox"/>
<input checked="" type="checkbox"/>	<input checked="" type="checkbox"/>	<input checked="" type="checkbox"/>	<input checked="" type="checkbox"/>	<input checked="" type="checkbox"/>	<input checked="" type="checkbox"/>	<input checked="" type="checkbox"/>	<input checked="" type="checkbox"/>
<input checked="" type="checkbox"/>	<input checked="" type="checkbox"/>	<input checked="" type="checkbox"/>	<input checked="" type="checkbox"/>	<input checked="" type="checkbox"/>	<input checked="" type="checkbox"/>	<input checked="" type="checkbox"/>	<input checked="" type="checkbox"/>
<input checked="" type="checkbox"/>	<input checked="" type="checkbox"/>	<input checked="" type="checkbox"/>	<input checked="" type="checkbox"/>	<input checked="" type="checkbox"/>	<input checked="" type="checkbox"/>	<input checked="" type="checkbox"/>	<input checked="" type="checkbox"/>
<input checked="" type="checkbox"/>	<input checked="" type="checkbox"/>	<input checked="" type="checkbox"/>	<input checked="" type="checkbox"/>	<input checked="" type="checkbox"/>	<input checked="" type="checkbox"/>	<input checked="" type="checkbox"/>	<input checked="" type="checkbox"/>
<input checked="" type="checkbox"/>	<input checked="" type="checkbox"/>	<input checked="" type="checkbox"/>	<input checked="" type="checkbox"/>	<input checked="" type="checkbox"/>	<input checked="" type="checkbox"/>	<input checked="" type="checkbox"/>	<input checked="" type="checkbox"/>
<input checked="" type="checkbox"/>	<input checked="" type="checkbox"/>	<input checked="" type="checkbox"/>	<input checked="" type="checkbox"/>	<input checked="" type="checkbox"/>	<input checked="" type="checkbox"/>	<input checked="" type="checkbox"/>	<input checked="" type="checkbox"/>
<input checked="" type="checkbox"/>	<input checked="" type="checkbox"/>	<input checked="" type="checkbox"/>	<input checked="" type="checkbox"/>	<input checked="" type="checkbox"/>	<input checked="" type="checkbox"/>	<input checked="" type="checkbox"/>	<input checked="" type="checkbox"/>
<input checked="" type="checkbox"/>	<input checked="" type="checkbox"/>	<input checked="" type="checkbox"/>	<input checked="" type="checkbox"/>	<input checked="" type="checkbox"/>	<input checked="" type="checkbox"/>	<input checked="" type="checkbox"/>	<input checked="" type="checkbox"/>
<input checked="" type="checkbox"/>	<input checked="" type="checkbox"/>	<input checked="" type="checkbox"/>	<input checked="" type="checkbox"/>	<input checked="" type="checkbox"/>	<input checked="" type="checkbox"/>	<input checked="" type="checkbox"/>	<input checked="" type="checkbox"/>
<input checked="" type="checkbox"/>	<input checked="" type="checkbox"/>	<input checked="" type="checkbox"/>	<input checked="" type="checkbox"/>	<input checked="" type="checkbox"/>	<input checked="" type="checkbox"/>	<input checked="" type="checkbox"/>	<input checked="" type="checkbox"/>
<input checked="" type="checkbox"/>	<input checked="" type="checkbox"/>	<input checked="" type="checkbox"/>	<input checked="" type="checkbox"/>	<input checked="" type="checkbox"/>	<input checked="" type="checkbox"/>	<input checked="" type="checkbox"/>	<input checked="" type="checkbox"/>
<input checked="" type="checkbox"/>	<input checked="" type="checkbox"/>	<input checked="" type="checkbox"/>	<input checked="" type="checkbox"/>	<input checked="" type="checkbox"/>	<input checked="" type="checkbox"/>	<input checked="" type="checkbox"/>	<input checked="" type="checkbox"/>
<input checked="" type="checkbox"/>	<input checked="" type="checkbox"/>	<input checked="" type="checkbox"/>	<input checked="" type="checkbox"/>	<input checked="" type="checkbox"/>	<input checked="" type="checkbox"/>	<input checked="" type="checkbox"/>	<input checked="" type="checkbox"/>
<input checked="" type="checkbox"/>	<input checked="" type="checkbox"/>	<input checked="" type="checkbox"/>	<input checked="" type="checkbox"/>	<input checked="" type="checkbox"/>	<input checked="" type="checkbox"/>	<input checked="" type="checkbox"/>	<input checked="" type="checkbox"/>
<input checked="" type="checkbox"/>	<input checked="" type="checkbox"/>	<input checked="" type="checkbox"/>	<input checked="" type="checkbox"/>	<input checked="" type="checkbox"/>	<input checked="" type="checkbox"/>	<input checked="" type="checkbox"/>	<input checked="" type="checkbox"/>
<input checked="" type="checkbox"/>	<input checked="" type="checkbox"/>	<input checked="" type="checkbox"/>	<input checked="" type="checkbox"/>	<input checked="" type="checkbox"/>	<input checked="" type="checkbox"/>	<input checked="" type="checkbox"/>	<input checked="" type="checkbox"/>
<input checked="" type="checkbox"/>	<input checked="" type="checkbox"/>	<input checked="" type="checkbox"/>	<input checked="" type="checkbox"/>	<input checked="" type="checkbox"/>	<input checked="" type="checkbox"/>	<input checked="" type="checkbox"/>	<input checked="" type="checkbox"/>
<input checked="" type="checkbox"/>	<input checked="" type="checkbox"/>	<input checked="" type="checkbox"/>	<input checked="" type="checkbox"/>	<input checked="" type="checkbox"/>	<input checked="" type="checkbox"/>	<input checked="" type="checkbox"/>	<input checked="" type="checkbox"/>
<input checked="" type="checkbox"/>	<input checked="" type="checkbox"/>	<input checked="" type="checkbox"/>	<input checked="" type="checkbox"/>	<input checked="" type="checkbox"/>	<input checked="" type="checkbox"/>	<input checked="" type="checkbox"/>	<input checked="" type="checkbox"/>
<input checked="" type="checkbox"/>	<input checked="" type="checkbox"/>	<input checked="" type="checkbox"/>	<input checked="" type="checkbox"/>	<input checked="" type="checkbox"/>	<input checked="" type="checkbox"/>	<input checked="" type="checkbox"/>	<input checked="" type="checkbox"/>
<input checked="" type="checkbox"/>	<input checked="" type="checkbox"/>	<input checked="" type="checkbox"/>	<input checked="" type="checkbox"/>	<input checked="" type="checkbox"/>	<input checked="" type="checkbox"/>	<input checked="" type="checkbox"/>	<input checked="" type="checkbox"/>
<input checked="" type="checkbox"/>	<input checked="" type="checkbox"/>	<input checked="" type="checkbox"/>	<input checked="" type="checkbox"/>	<input checked="" type="checkbox"/>	<input checked="" type="checkbox"/>	<input checked="" type="checkbox"/>	<input checked="" type="checkbox"/>
<input checked="" type="checkbox"/>	<input checked="" type="checkbox"/>	<input checked="" type="checkbox"/>	<input checked="" type="checkbox"/>	<input checked="" type="checkbox"/>	<input checked="" type="checkbox"/>	<input checked="" type="checkbox"/>	<input checked="" type="checkbox"/>
<input checked="" type="checkbox"/>	<input checked="" type="checkbox"/>	<input checked="" type="checkbox"/>	<input checked="" type="checkbox"/>	<input checked="" type="checkbox"/>	<input checked="" type="checkbox"/>	<input checked="" type="checkbox"/>	<input checked="" type="checkbox"/>
<input checked="" type="checkbox"/>	<input checked="" type="checkbox"/>	<input checked="" type="checkbox"/>	<input checked="" type="checkbox"/>	<input checked="" type="checkbox"/>	<input checked="" type="checkbox"/>	<input checked="" type="checkbox"/>	<input checked="" type="checkbox"/>
<input checked="" type="checkbox"/>	<input checked="" type="checkbox"/>	<input checked="" type="checkbox"/>	<input checked="" type="checkbox"/>	<input checked="" type="checkbox"/>	<input checked="" type="checkbox"/>	<input checked="" type="checkbox"/>	<input checked="" type="checkbox"/>
<input checked="" type="checkbox"/>	<input checked="" type="checkbox"/>	<input checked="" type="checkbox"/>	<input checked="" type="checkbox"/>	<input checked="" type="checkbox"/>	<input checked="" type="checkbox"/>	<input checked="" type="checkbox"/>	<input checked="" type="checkbox"/>
<input checked="" type="checkbox"/>	<input checked="" type="checkbox"/>	<input checked="" type="checkbox"/>	<input checked="" type="checkbox"/>	<input checked="" type="checkbox"/>	<input checked="" type="checkbox"/>	<input checked="" type="checkbox"/>	<input checked="" type="checkbox"/>
<input checked="" type="checkbox"/>	<input checked="" type="checkbox"/>	<input checked="" type="checkbox"/>	<input checked="" type="checkbox"/>	<input checked="" type="checkbox"/>	<input checked="" type="checkbox"/>	<input checked="" type="checkbox"/>	<input checked="" type="checkbox"/>
<input checked="" type="checkbox"/>	<input checked="" type="checkbox"/>	<input checked="" type="checkbox"/>	<input checked="" type="checkbox"/>	<input checked="" type="checkbox"/>	<input checked="" type="checkbox"/>	<input checked="" type="checkbox"/>	<input checked="" type="checkbox"/>
<input checked="" type="checkbox"/>	<input checked="" type="checkbox"/>	<input checked="" type="checkbox"/>	<input checked="" type="checkbox"/>	<input checked="" type="checkbox"/>	<input checked="" type="checkbox"/>	<input checked="" type="checkbox"/>	<input checked="" type="checkbox"/>
<input checked="" type="checkbox"/>	<input checked="" type="checkbox"/>	<input checked="" type="checkbox"/>	<input checked="" type="checkbox"/>	<input checked="" type="checkbox"/>	<input checked="" type="checkbox"/>	<input checked="" type="checkbox"/>	<input checked="" type="checkbox"/>
<input checked="" type="checkbox"/>	<input checked="" type="checkbox"/>	<input checked="" type="checkbox"/>	<input checked="" type="checkbox"/>	<input checked="" type="checkbox"/>	<input checked="" type="checkbox"/>	<input checked="" type="checkbox"/>	<input checked="" type="checkbox"/>
<input checked="" type="checkbox"/>	<input checked="" type="checkbox"/>	<input checked="" type="checkbox"/>	<input checked="" type="checkbox"/>	<input checked="" type="checkbox"/>	<input checked="" type="checkbox"/>	<input checked="" type="checkbox"/>	<input checked="" type="checkbox"/>
<input checked="" type="checkbox"/>	<input checked="" type="checkbox"/>	<input checked="" type="checkbox"/>	<input checked="" type="checkbox"/>	<input checked="" type="checkbox"/>	<input checked="" type="checkbox"/>	<input checked="" type="checkbox"/>	<input checked="" type="checkbox"/>
<input checked="" type="checkbox"/>	<input checked="" type="checkbox"/>	<input checked="" type="checkbox"/>	<input checked="" type="checkbox"/>	<input checked="" type="checkbox"/>	<input checked="" type="checkbox"/>	<input checked="" type="checkbox"/>	<input checked="" type="checkbox"/>
<input checked="" type="checkbox"/>	<input checked="" type="checkbox"/>	<input checked="" type="checkbox"/>	<input checked="" type="checkbox"/>	<input checked="" type="checkbox"/>	<input checked="" type="checkbox"/>	<input checked="" type="checkbox"/>	<input checked="" type="checkbox"/>
<input checked="" type="checkbox"/>	<input checked="" type="checkbox"/>	<input checked="" type="checkbox"/>	<input checked="" type="checkbox"/>	<input checked="" type="checkbox"/>	<input checked="" type="checkbox"/>	<input checked="" type="checkbox"/>	<input checked="" type="checkbox"/>
<input checked="" type="checkbox"/>	<input checked="" type="checkbox"/>	<input checked="" type="checkbox"/>	<input checked="" type="checkbox"/>	<input checked="" type="checkbox"/>	<input checked="" type="checkbox"/>	<input checked="" type="checkbox"/>	<input checked="" type="checkbox"/>
<input checked="" type="checkbox"/>	<input checked="" type="checkbox"/>	<input checked="" type="checkbox"/>	<input checked="" type="checkbox"/>	<input checked="" type="checkbox"/>	<input checked="" type="checkbox"/>	<input checked="" type="checkbox"/>	<input checked="" type="checkbox"/>
<input checked="" type="checkbox"/>	<input checked="" type="checkbox"/>	<input checked="" type="checkbox"/>	<input checked="" type="checkbox"/>	<input checked="" type="checkbox"/>	<input checked="" type="checkbox"/>	<input checked="" type="checkbox"/>	<input checked="" type="checkbox"/>
<input checked="" type="checkbox"/>	<input checked="" type="checkbox"/>	<input checked="" type="checkbox"/>	<input checked="" type="checkbox"/>	<input checked="" type="checkbox"/>	<input checked="" type="checkbox"/>	<input checked="" type="checkbox"/>	<input checked="" type="checkbox"/>
<input checked="" type="checkbox"/>	<input checked="" type="checkbox"/>	<input checked="" type="checkbox"/>	<input checked="" type="checkbox"/>	<input checked="" type="checkbox"/>	<input checked="" type="checkbox"/>	<input checked="" type="checkbox"/>	<input checked="" type="checkbox"/>
<input checked="" type="checkbox"/>	<input checked="" type="checkbox"/>	<input checked="" type="checkbox"/>	<input checked="" type="checkbox"/>	<input checked="" type="checkbox"/>	<input checked="" type="checkbox"/>	<input checked="" type="checkbox"/>	<input checked="" type="checkbox"/>
<input checked="" type="checkbox"/>	<input checked="" type="checkbox"/>	<input checked="" type="checkbox"/>	<input checked="" type="checkbox"/>	<input checked="" type="checkbox"/>	<input checked="" type="checkbox"/>	<input checked="" type="checkbox"/>	<input checked="" type="checkbox"/>
<input checked="" type="checkbox"/>	<input checked="" type="checkbox"/>	<input checked="" type="checkbox"/>	<input checked="" type="checkbox"/>	<input checked="" type="checkbox"/>	<input checked="" type="checkbox"/>	<input checked="" type="checkbox"/>	<input checked="" type="checkbox"/>
<input checked="" type="checkbox"/>	<input checked="" type="checkbox"/>	<input checked="" type="checkbox"/>	<input checked="" type="checkbox"/>	<input checked="" type="checkbox"/>	<input checked="" type="checkbox"/>	<input checked="" type="checkbox"/>	<input checked="" type="checkbox"/>
<input checked="" type="checkbox"/>	<input checked="" type="checkbox"/>	<input checked="" type="checkbox"/>	<input checked="" type="checkbox"/>	<input checked="" type="checkbox"/>	<input checked="" type="checkbox"/>	<input checked="" type="checkbox"/>	<input checked="" type="checkbox"/>
<input checked="" type="checkbox"/>	<input checked="" type="checkbox"/>	<input checked="" type="checkbox"/>	<input checked="" type="checkbox"/>	<input checked="" type="checkbox"/>	<input checked="" type="checkbox"/>	<input checked="" type="checkbox"/>	<input checked="" type="checkbox"/>
<input checked="" type="checkbox"/>	<input checked="" type="checkbox"/>	<input checked="" type="checkbox"/>	<input checked="" type="checkbox"/>	<input checked="" type="checkbox"/>	<input checked="" type="checkbox"/>	<input checked="" type="checkbox"/>	<input checked="" type="checkbox"/>
<input checked="" type="checkbox"/>	<input checked="" type="checkbox"/>	<input checked="" type="checkbox"/>	<input checked="" type="checkbox"/>	<input checked="" type="checkbox"/>	<input checked="" type="checkbox"/>	<input checked="" type="checkbox"/>	<input checked="" type="checkbox"/>
<input checked="" type="checkbox"/>	<input checked="" type="checkbox"/>	<input checked="" type="checkbox"/>	<input checked="" type="checkbox"/>	<input checked="" type="checkbox"/>	<input checked="" type="checkbox"/>	<input checked="" type="checkbox"/>	<input checked="" type="checkbox"/>
<input checked="" type="checkbox"/>	<input checked="" type="checkbox"/>	<input checked="" type="checkbox"/>	<input checked="" type="checkbox"/>	<input checked="" type="checkbox"/>	<input checked="" type="checkbox"/>	<input checked="" type="checkbox"/>	<input checked="" type="checkbox"/>
<input checked="" type="checkbox"/>	<input checked="" type="checkbox"/>	<input checked="" type="checkbox"/>	<input checked="" type="checkbox"/>	<input checked="" type="checkbox"/>	<input checked="" type="checkbox"/>	<input checked="" type="checkbox"/>	<input checked="" type="checkbox"/>
<input checked="" type="checkbox"/>	<input checked="" type="checkbox"/>	<input checked="" type="checkbox"/>	<input checked="" type="checkbox"/>	<input checked="" type="checkbox"/>	<input checked="" type="checkbox"/>	<input checked="" type="checkbox"/>	<input checked="" type="checkbox"/>
<input checked="" type="checkbox"/>	<input checked="" type="checkbox"/>	<input checked="" type="checkbox"/>	<input checked="" type="checkbox"/>	<input checked="" type="checkbox"/>	<input checked="" type="checkbox"/>	<input checked="" type="checkbox"/>	<input checked="" type="checkbox"/>
<input checked="" type="checkbox"/>	<input checked="" type="checkbox"/>	<input checked="" type="checkbox"/>	<input checked="" type="checkbox"/>	<input checked="" type="checkbox"/>	<input checked="" type="checkbox"/>	<input checked="" type="checkbox"/>	<input checked="" type="checkbox"/>
<input checked="" type="checkbox"/>	<input checked="" type="checkbox"/>	<input checked="" type="checkbox"/>	<input checked="" type="checkbox"/>	<input checked="" type="checkbox"/>	<input checked="" type="checkbox"/>	<input checked="" type="checkbox"/>	<input checked="" type="checkbox"/>
<input checked="" type="checkbox"/>	<input checked="" type="checkbox"/>	<input checked="" type="checkbox"/>	<input checked="" type="checkbox"/>	<input checked="" type="checkbox"/>	<input checked="" type="checkbox"/>	<input checked="" type="checkbox"/>	<input checked="" type="checkbox"/>
<input checked="" type="checkbox"/>	<input checked="" type="checkbox"/>	<input checked="" type="checkbox"/>	<input checked="" type="checkbox"/>	<input checked="" type="checkbox"/>	<input checked="" type="checkbox"/>	<input checked="" type="checkbox"/>	<input checked="" type="checkbox"/>
<input checked="" type="checkbox"/>	<input checked="" type="checkbox"/>	<input checked="" type="checkbox"/>	<input checked="" type="checkbox"/>	<input checked="" type="checkbox"/>	<input checked="" type="checkbox"/>	<input checked="" type="checkbox"/>	<input checked="" type="checkbox"/>
<input checked="" type="checkbox"/>	<input checked="" type="checkbox"/>	<input checked="" type="checkbox"/>	<input checked="" type="checkbox"/>	<input checked="" type="checkbox"/>	<input checked="" type="checkbox"/>	<input checked="" type="checkbox"/>	<input checked="" type="checkbox"/>
<input checked="" type="checkbox"/>	<input checked="" type="checkbox"/>	<input checked="" type="checkbox"/>					

2.4 Appendix D – Minutes to Waverley Council Traffic Committee Meeting 22nd February 2018



**MINUTES OF THE WAVERLEY TRAFFIC
COMMITTEE MEETING HELD AT WAVERLEY
COUNCIL CHAMBERS, CNR PAUL STREET AND
BONDI ROAD, BONDI JUNCTION ON
THURSDAY, 22 FEBRUARY 2018**



Voting Members Present:

Cr J Wakefield	Waverley Council (Chair)
Sgt L Barrett	NSW Police – Traffic Services, Eastern Suburbs Local Area Command
Mr B Borger	Roads and Maritime Services – Traffic Management (South)
Mr M Cutting	Representing Bruce Notley-Smith, MP, Member for Coogee

Also Present:

Cr T Kay	Waverley Council (Alternate Chair)
Mr E Graham	Sydney Buses (Eastern Region)
Mr D Joannides	Waverley Council – Executive Manager, Creating Waverley
Mr G Garnsey	Waverley Council – Manager, Transport and Development
Mr K Mowad	Waverley Council – Senior Traffic Engineer
Mr S Samadian	Waverley Council – Traffic Engineer
Ms C New	Waverley Council – Sustainable Transport Officer
Mr A Weinberg	Waverley Council – Regional Environment Program Coordinator

At the commencement of proceedings at 10.04 AM, those present were as listed above.

Apologies

Apologies were received and accepted from Mr B Morrow (representative for the Member for Coogee) and Ms R Russo (representative for the Member for Vaucluse).

Declarations of Pecuniary and Non-Pecuniary Interests

The Chair called for declarations of interest and none were received.

Adoption of previous Minutes by Council - 23 November 2017

The recommendations contained in Part 1 - Matters Proposing That Council Exercise Its Delegated Functions - of the Minutes of the Waverley Traffic Committee meeting held on 23 November 2017 were adopted by Council at its meeting on 12 December 2017.

Adoption of Previous Minutes by Council – Electronic Meeting – November/December 2017

An electronic meeting of the Traffic Committee was held in late November/early December 2017 to consider the following item:

- Bronte Road, Waverley and Gould Street, Bondi Beach – Changes to Parking Restrictions.

At its meeting on 12 December 2017, Council adopted the Traffic Committee's recommendation, which read as follows:

That Council:

1. Removes the existing 28 metre '1/4P 8.30 am–6 pm Mon–Fri' zone outside the Waverley Court House in Bronte road and extends the existing 'No Stopping Police Vehicles Excepted' zone in front of the Police Station 28 metres south to replace it, as per Figure 3.
2. Extends the existing 'No Stopping Police Vehicles Excepted' zone adjacent to the Police Station in Gould Street, Bondi Beach a further 12 metres south west, as per Figure 6.

PART 1 – MATTERS PROPOSING THAT COUNCIL EXERCISE ITS DELEGATED FUNCTIONS

NOTE: The matters listed under this part of the agenda propose that Council either does or does not exercise the traffic related functions delegated to it by the RMS. The recommendations made by the Committee under this part of the agenda will be submitted to Council for adoption.

TC/C STATE ELECTORATE OF COOGEE**TC/C.01/18.02 Multiple Streets - Installation of 'No Stopping' Zones (A02/0637-02)****COUNCIL OFFICER'S PROPOSAL:**

That Council installs 'No Stopping' zones at the following intersections:

1. Farrellys Avenue and Boonara Avenue, Bondi:
 - (a) 10 m on the western side of Boonara Avenue, north of Farrellys Avenue.
 - (b) 10 m on the eastern side of Boonara Avenue, north of Farrellys Avenue.
 - (c) 10 m on the northern side of Farrellys Avenue, east of Boonara Avenue.
 - (d) 10 m on the northern side of Farrellys Avenue, west of Boonara Avenue.

2. Manning Street and Queens Park Road, Queens Park:
 - (a) On the eastern side of Manning Street, north of Queens Park Road terminating at the northern end of the speed hump/threshold.
 - (b) On the western side of Manning Street, north of Queens Park Road terminating at the northern end of the speed hump/threshold.
 - (c) 10 m on the northern side of Queens Park Road, east of Manning Street.
3. Strickland Street and Old South Head Road, Rose Bay:
 - (d) 10 m on the northern side of Strickland Street, east of Old South Head Road.
 - (e) 10 m on the eastern side of Old South Head Road, north of Strickland Street.

WTC RECOMMENDATION (UNANIMOUS SUPPORT):

That the Council Officer's Proposal be adopted.

Voting members present for this item: Representative of the Member for Coogee, NSW Police representative, RMS representative and Waverley Council representative (Chair).

TC/C.02/18.02 Macpherson Street, Waverley - Proposed Relocation of Pedestrian Crossing and Bus Zone at St Catherine's School (PD-16/2013)

COUNCIL OFFICER'S PROPOSAL:

That:

1. Council approves the proposed relocation of the raised pedestrian crossing, changes to signage and linemarking and changes to bus zones as shown on drawing No. C15 – "Macpherson Street- New Signage Plan" Revision P6 prepared by Taylor Thomson Whitting (TTW) attached to this report.
2. Council considers condition B2 under 'Part B: Prior to Issue of a Construction Certificate' of the development consent issued by the Planning Assessment Commission on 6 April 2016 has been sufficiently satisfied to allow for the release the Construction Certificate.
3. All costs associated with the works be at the applicant's expense.

WTC RECOMMENDATION (UNANIMOUS SUPPORT):

That the Council Officer's Proposal be adopted.

Voting members present for this item: Representative of the Member for Coogee, NSW Police representative, RMS representative and Waverley Council representative (Chair).

TC/C.03/18.02 Council Chambers - Rear Car Park - Changes to Parking Restrictions (A02/0637-02)**COUNCIL OFFICER'S PROPOSAL:**

That Council changes the existing 'No Parking 8am-6pm Mon-Fri Council Authorised Vehicles Excepted' on the northern side of the car park at the rear of the Council Chambers to 'No Parking 8am-8pm Mon-Fri Council Authorised Vehicles Excepted'.

WTC RECOMMENDATION (UNANIMOUS SUPPORT):

That the Council Officer's Proposal be adopted.

Voting members present for this item: Representative of the Member for Coogee, NSW Police representative, RMS representative and Waverley Council representative (Chair).

TC/C.04/18.02 73-89 Ebley Street, Bondi Junction - Work Zone/ Construction Vehicle and Pedestrian Plan of Management (DA-572/2015)**COUNCIL OFFICER'S PROPOSAL:**

That Council:

1. Installs a 25m long 'No Parking 7am-5pm Mon-Fri 8am-3pm Sat Council Authorised Vehicles Excepted' zone along the MacKenzie Street frontage of 73-89 Ebley Street, Bondi Junction.
2. Delegates authority to the Executive Manager, Creating Waverley to extend the length and duration or remove the Work Zone as necessary.
3. Approves the Construction Vehicle and Pedestrian Plan of Management (CVPPM), prepared by SBMG Planning, dated 22 January 2018 (Ref: SBMG01655-00 R1) subject to the following:
 - (a) The application for a Construction Certificate shall be taken as accepting these conditions of approval
 - (b) "Traffic Control Plan- Awning & Wall Removal" (Plan No. SBMG01655-20 A) being amended to include a sign on the footpath immediately to the east of the pedestrian crossing west of MacKenzie Street giving advanced warning to eastbound pedestrians on Ebley Street, south side, that the footpath is closed at MacKenzie Street.
 - (c) In accordance with State Transit, Sydney Buses requirements, there shall be no heavy vehicle access to or from the site on weekdays between 8.00am and 9.00am. Note, these hours are subject to change should it be found extended truck access restrictions are required.
 - (d) During the busy times of Easter, the mid-year sales at Westfields and Christmas when traffic congestion increases in and around Bondi Junction, Council may restrict heavy vehicle movements to and from the site.
 - (e) Truck access to the site shall be via Darley Road, then Carrington Road, then Bronte Road and then Ebley Street.
 - (f) Truck egress from the site shall be via Ebley Street, then Denison Street, then Oxford Street

and then Syd Einfeld Drive.

- (g) There being no access by trucks to Brisbane Street during any phases of the development.
- (h) Truck and Trailers accessing the site during the demolition and excavation stages shall be limited in size to 16m overall length.
- (i) Trucks accessing the site during the construction and fitout stages shall be limited to Medium Rigid Vehicles (MRV's) with a maximum length of 9m.
- (j) Trucks exceeding 16m in length and semi-trailers are not approved to access any streets within the Waverley Council area without obtaining the prior and written approval to use such vehicles by Council's Executive Manager, Creating Waverley.
- (k) Trucks, on arriving at the site, shall enter the site immediately. Trucks not able to enter the site immediately shall not wait on Ebley Street or Bronte Road but wait remote from the site and enter Ebley Street only when the area is clear for immediate access. The applicant shall co-ordinate truck movements with other nearby building activities where necessary.
- (l) There shall be no blockage to through traffic on Ebley Street and MacKenzie Street, other than for short periods of time when manoeuvring vehicles into and out of the site/ Construction Zone.
- (m) All vehicles, plant and equipment shall to be operated in accordance with the [NSW] *Road Rules 2014*.
- (n) All traffic and pedestrian control shall be in accordance with the RMS's *Traffic Control at Work Sites* manual.
- (o) No barricades or delineators – including bollards, witches hats, etc – shall be placed in the kerbside parking lane and footpath without the prior approval of Council.
- (p) Occupants of neighbouring properties shall be advised of the demolition, excavation and construction activities.
- (q) Pedestrian access to neighbouring properties shall be maintained at all times.
- (r) No building materials shall be placed, dumped or left on any Council road or footpath area at any time.
- (s) The footpaths remaining in a safe condition for use by pedestrians at all times.
- (t) Separate approval is required from the Waverley Traffic Committee, Waverley Council, NSW Police Force and Roads and Maritime Service of NSW before any roads are fully closed to through traffic.
- (u) Separate approval is required from the Waverley Traffic Committee and/or Waverley Council for:
 - (i) Installation of a tower or other on-site crane,
 - (ii) The use of any concrete line or boom pump, crane or hoist over a footpath,
 - (iii) The closure of the footpath or nature strip to pedestrians,

- (iv) The use of any other parking adjacent to the site,
- (v) The erection of a hoarding.

WTC RECOMMENDATION (UNANIMOUS SUPPORT):

That the Council Officer's Proposal be adopted subject to the following clauses being amended to read as follows:

- 3f) Truck egress from the site shall be via Mackenzie Street, then Ebley Street, then Denison Street and then West Oxford Street.
- 3u) Separate approval is required from NSW Police, the Waverley Traffic Committee and/or Waverley Council for:
 - (i) Installation of a tower or other on-site crane,
 - (ii) The use of any concrete line or boom pump, crane or hoist over a footpath,
 - (iii) The closure of the footpath or nature strip to pedestrians,
 - (iv) The use of any other parking adjacent to the site,
 - (v) The erection of a hoarding.

Voting members present for this item: Representative of the Member for Coogee, NSW Police representative, RMS representative and Waverley Council representative (Chair).

TC/C.05/18.02 Bronte Cutting, Bronte - Pedestrian Walkway Barrier Trial (A03/0042-04)

COUNCIL OFFICER'S PROPOSAL:

That Council, on a 12 month trial basis:

1. Approves the provision of a 130m pedestrian walkway separated with waterfilled barriers along the eastern side of Bronte Cutting Car Park/ Calga Place between carspace No's 34 to 54.
2. Installs 'No Stopping' signage from the southern end of car space 34 to the eastern end of parking space 54.
3. Converts parking space 54 into a disabled person's parking space to replace the existing disabled parking space.
4. Removes the existing parking meters and bollards along the proposed section of separated walkway to allow for pedestrian access.
5. Contacts officer in Council's Customer First section to discuss the need, if any, to install parking meters removed to make way for the trial basis footpath.

WTC RECOMMENDATION (UNANIMOUS SUPPORT):

That:

- 1) The Council Officer's Proposal not be adopted.
- 2) This matter be deferred for further consideration of alternative options including a 10km shared zone and community consultation.

Voting members present for this item: Representative of the Member for Coogee, NSW Police representative, RMS representative and Waverley Council representative (Chair).

TC/C.06/18.02 Macpherson Street, Bronte - Construction Zone (A03/2514-04)**COUNCIL OFFICER'S PROPOSAL:**

That Council:

1. Temporarily changes the existing 25m long 'Bus Zone' outside of 175 Macpherson Street, Bronte to a 30m 'No Parking 7am – 5pm Monday–Friday 8am – 3pm Saturday Council Authorised Vehicles Exempted' zone by extending it a further 5m to the east.
2. Approves the temporary relocation of existing bus stop No. 202438 immediately east of its current location and provides a 30 m bus zone commencing from the end of the construction zone outside 175 Macpherson Street, Bronte for a distance of 30 m to the east.
3. Reinstates the bus stop and 'Bus Zone' signage to the 30m construction zone once the construction zone is no longer required.
4. Requires the applicant to notify the residents of surrounding properties prior to the construction zone being installed and bus zone being temporarily relocated.
5. Notifies the applicant that the temporary 'Bus Zone' must not be used for the standing of trucks or other building related vehicles at any time.
6. Council delegates authority to the Executive Manager, Creating Waverley, to extend the length and duration of or remove the construction zone, as necessary.

WTC RECOMMENDATION (UNANIMOUS SUPPORT):

That the Council Officer's Proposal be adopted subject to the following clause being amended to read as follows:

6. Council delegates authority to the Executive Manager, Creating Waverley, to alter the location of the bus stop, extend the length and duration of or remove the construction zone, as necessary.

Voting members present for this item: Representative of the Member for Coogee, NSW Police representative, RMS representative and Waverley Council representative (Chair).

TC/V STATE ELECTORATE OF VAUCLUSE**TC/V.01/18.02 Wellington Street, Bondi - Construction Zone (A03/2514-04)****COUNCIL OFFICER'S PROPOSAL:**

That:

1. Council installs a 12 m long 'No Parking 7 am–5 pm Monday–Friday 8 am–3 pm Saturday Authorised Council Vehicles Excepted' zone across the frontage of 130 Wellington Street, Bondi.
2. There be no blockage to through traffic on Wellington Street other than for short periods of time when manoeuvring vehicles into and out of the zone.
3. Council delegates authority to the Executive Manager, Creating Waverley, to extend the length and duration of or remove the construction zone, as necessary.

WTC RECOMMENDATION (UNANIMOUS SUPPORT):

That the Council Officer's Proposal be adopted.

Voting members present for this item: NSW Police representative, RMS representative and Waverley Council representative (Chair).

TC/V.02/18.02 Lamrock Avenue, Bondi Beach - Construction Zone (A03/2514-04)**COUNCIL OFFICER'S PROPOSAL:**

That:

1. Council installs a 12.5m long, 'No Parking 7am–5pm Monday–Friday; 8am–3pm Saturday Authorised Council Vehicles Excepted' zone across the frontage of 70 Lamrock Avenue, Bondi Beach.
2. There be no blockage to through traffic on Lamrock Avenue other than for short periods of time when manoeuvring vehicles into and out of the zone.
3. Council delegates authority to the Executive Manager, Creating Waverley, to extend the length and duration of or remove the construction zone as necessary.

WTC RECOMMENDATION (UNANIMOUS SUPPORT):

That the Council Officer's Proposal be adopted.

Voting members present for this item: NSW Police representative, RMS representative and Waverley Council representative (Chair).

TC/V.03/18.02 Military Road, Dover Heights - Construction Zone (A03/2514-04)**COUNCIL OFFICER'S PROPOSAL:**

That:

1. Council installs an 18 m long, 'No Parking 7am–5pm Monday–Friday; 8am–3pm Saturday Authorised Council Vehicles Excepted' zone on the Kobada Road frontage of 286 Military Road, Dover Heights immediately to the west of the "No Stopping" zone.
2. There be no blockage to through traffic on Kobada Road other than for short periods of time when manoeuvring vehicles into and out of the zone.
3. Council delegates authority to the Executive Manager, Creating Waverley, to extend the length and duration of or remove the construction zone, as necessary.

WTC RECOMMENDATION (UNANIMOUS SUPPORT):

That the Council Officer's Proposal be adopted subject to the following clause being amended to read as follows:

3. Council delegates authority to the Executive Manager, Creating Waverley, to extend the length and duration of or remove the construction zone and install a 'No Stopping' zone on the southern side of Military Road, Dover Heights directly opposite the construction zone, as necessary

Voting members present for this item: NSW Police representative, RMS representative and Waverley Council representative (Chair).

TC/V.04/18.02 Hardy Street, North Bondi - Installation of Kerb Blister (A03/0042-04)**"COUNCIL OFFICER'S PROPOSAL:**

That Council installs a kerb blister, chevron sign and changes line marking on the eastern side of Hardy Street south of Kippara Road as per Drawing 8958, Issue A, attached to this report.

WTC RECOMMENDATION (UNANIMOUS SUPPORT):

That the Council Officer's Proposal be adopted.

Voting members present for this item: NSW Police representative, RMS representative and Waverley Council representative (Chair).

TC/V.05/18.02 Beach Road, Bondi Beach - Pedestrian Refuges (A03/0042-04)**COUNCIL OFFICER'S PROPOSAL:**

That Council approves the installation of line marking, signage and pedestrian facilities at the intersection of Beach Road and Blair Street, Bondi Beach, as per Drawing 8948 Issue B attached to this report.

WTC RECOMMENDATION (UNANIMOUS SUPPORT):

That the Council Officer's Proposal be adopted.

Voting members present for this item: NSW Police representative, RMS representative and Waverley Council representative (Chair).

TC/V.06/18.02 Ben Eden Street, Bondi Junction - Temporary Full Road Closure for Tower Crane Removal (A02/0216)**COUNCIL OFFICER'S PROPOSAL:**

That Council approves the temporary closure of Ben Eden Street, Bondi Junction for the full length from Bondi Road to Paul Street on Monday 26 February, 2018 from 7am to 5pm, or on an alternative day and time approved by the Executive Manager Creating Waverley, subject to the applicant:

1. Amending the TCP to include the additional closing of Ben Eden Street at Paul Street by providing "Road Closed", "Residents Only" and "Detour" signs.
2. Obtaining approvals from the NSW Police.
3. Providing a notice in writing of the temporary closure to all properties in the block bounded by Old South Head Road, Bondi Road, Waverley Street and Ben Eden Street not less than seven (7) days prior to the closure.
4. Forwarding a copy of the resident notification letter to the Senior Traffic Engineer for approval prior to distribution.
5. All traffic control is to be in accordance with RMS traffic control at worksites manual.

WTC RECOMMENDATION (UNANIMOUS SUPPORT):

That the Council Officer's Proposal be adopted.

Voting members present for this item: NSW Police representative, RMS representative and Waverley Council representative (Chair).

TC/V.07/18.02 Oakley Road, North Bondi - 'P Motor Bikes Only' (A02/0637-02)**COUNCIL OFFICER'S PROPOSAL:**

That Council:

1. Installs 5m of "P Motor Bikes Only" on the southern side of Oakley Road, North Bondi, immediately to the west of the "No Parking" zone across the driveway to the Galilee Catholic School.
2. Notifies the Galilee Catholic School of the proposed motorcycle zone.

WTC RECOMMENDATION (UNANIMOUS SUPPORT):

That the Council Officer's Proposal be adopted.

Voting members present for this item: NSW Police representative, RMS representative and Waverley Council representative (Chair).

TC/V.08/18.02 Old South Head Road, Bondi Junction - Bon Accord Avenue and Victoria Road - Shared Path (SF17/1438)**COUNCIL OFFICER'S PROPOSAL:**

That Council approves the upgrade of the southern path of Old South Head Road between Bon Accord Avenue and Victoria Road to a shared path for bicycles and pedestrians as per the drawings L.001 L.002, L101, 102, L201, L202, L301, L302 (issue "D") prepared by Spackman Mossop Michaels attached to the report.

WTC RECOMMENDATION (UNANIMOUS SUPPORT):

That the Council Officer's Proposal be adopted.

Voting members present for this item: NSW Police representative, RMS representative and Waverley Council representative (Chair).

TC/V.09/18.02 Blair Street & Gould Street, North Bondi - Parking Restrictions (A03/0042-04)**COUNCIL OFFICER'S PROPOSAL:**

That Council:

1. Signposts the statutory 10 metres 'No Stopping' restrictions on the eastern side of Gould Street North immediately north of Blair Street.
2. Installs 10 metres of 'No Stopping' on the western side of Gould Street North immediately north of Blair Street.
3. Extends the existing 'No Stopping' zone on the northern side of Blair Street a further 6 metres west of Gould Street North to improve sight distance for turning vehicles.

4. Extends the existing 'No Stopping' zone on the southern side of Blair Street a further 6 metres east of Gould Street North to improve sight distance for turning vehicles.

WTC RECOMMENDATION (UNANIMOUS SUPPORT):

That the Council Officer's Proposal be adopted.

Voting members present for this item: NSW Police representative, RMS representative and Waverley Council representative (Chair).

TC/CV ELECTORATES OF COOGEE AND VAUCLUSE

TC/CV.01/18.02 Multiple Streets - 'P Disability Only' Zone (A02/0273-02)

1. Council Officer's Proposal:

That Council:

1. Installs a 5.5m long 'P Disability Only' zone outside 13 Dudley Street, Bondi.
2. Installs a 5.5m long 'P Disability Only' zone outside 15 Beaumont Street, Rose Bay.
3. Installs a 5.5m long 'P Disability Only' zone outside 2 Myuna Road, Dover Heights.
4. Removes the existing 'P Disability Only' zone in the vicinity of 11 Hewlett Street, Bronte.

WTC RECOMMENDATION (UNANIMOUS SUPPORT):

That the Council Officer's Proposal be adopted.

Voting members present for this item: Representative of the Member for Coogee, NSW Police representative, RMS representative and Waverley Council representative (Chair).

TC/CV.02/18.02 Multiple Streets - 'Electric Vehicle Excepted Only While Charging' Zones (A17/0477)

COUNCIL OFFICER'S PROPOSAL:

That Council approves the installation of "Electric Vehicles Excepted Only While Charging" zones at two locations:

1. A 6m zone outside the Mill Hill Centre, Spring Street, Bondi Junction.
2. outside Lush Café on Queen Elizabeth Drive, Drive Bondi Beach.

WTC RECOMMENDATION (UNANIMOUS SUPPORT):

That the Council Officer's Proposal be adopted subject to being amended to read as follows:

That Council approves the installation of “No Parking Electric Vehicles Excepted Only While Charging” zones at the following locations with a further report to be submitted to the Traffic Committee on the operation of and access to the parking spaces, in March 2019:

1. A 6m zone outside the Mill Hill Centre, Spring Street, Bondi Junction.
2. The parking spot to the immediate west of the pavilion as indicated in figure 2 on Queen Elizabeth Drive, Bondi Beach.

Voting members present for this item: Representative of the Member for Coogee, NSW Police representative, RMS representative and Waverley Council representative (Chair).

PART 2 – TRAFFIC ENGINEERING ADVICE

NOTE: The matters listed under this part of the agenda seek the advice of the WTC only and do not propose that Council exercise its delegated functions at this point in time (though they may or may not require it in the future).

TC/TEAC STATE ELECTORATE OF COOGEE

Nil

TC/TEAV STATE ELECTORATE OF VAUCLUSE

Nil

TC/TEACV ELECTORATES OF COOGEE AND VAUCLUSE

Nil

THE MEETING CLOSED AT 11.54 AM

.....
**SIGNED AND CONFIRMED
MAYOR
20 MARCH 2018**