

Memorandum

To	Genevieve Seed	Page	6
CC	Garry Bailey		
Subject	Rix's Creek Continuation Project, Revised Response to Submissions - Additional Questions from the Department of Planning and Environment		
From	Simon Murphy		
File/Ref No.	60289290	Date	21-Feb-2018

Dear Genevieve

Thank you for your email of 9 February providing an update on the above project and requesting clarification on a number of points to assist your assessment of the project. Please find below responses to your questions and clarification requests.

1.0 General

DP&E Question 1

How will the proposed extension of Bloomfield Colliery (Mod 4) affect the proposal? I note that the EIS and Revised RTS assume Bloomfield Colliery will close in 2020 and that Rix's Creek will increase production from 2021-2025 to meet residual demand. Considering that Bloomfield Colliery is now proposing to extend operations until 2030, how might this change Rix's production profile, employment assumptions, etc.

Response 1

(Bloomfield Mine); the proposed extension of Bloomfield Colliery (Mod 4) will not affect the proposal. Purchase of the Integra Mine has allowed the production from the Rixs Creek North (Integra) consent area to be part of The Bloomfield Group total coal sales profile. The production schedule for Rixs Creek SSD 6300 in the RRTS has been adjusted post the Integra purchase. The proposed increase in production levels, above the currently approved DA 49/94 level, will be achieved by the use of additional mobile plant acquired during the Integra purchase. There is no change to the production levels stated in the RRTS.

Employment assumptions will remain unchanged. With the granting of the Bloomfield Colliery Mod 4 the existing Bloomfield employment structure could continue towards 2030, however additional employment at Rixs Creek to achieve the SSD 6300 production levels will still be drawn from the same area as outlined in the SSD 6300 EIS, i.e. the Singleton and adjacent Hunter Valley areas. The employment to recommence operations at Rixs Creek North has been demonstrated to come from the same areas i.e. predominantly Singleton and surrounding areas.

DP&E Question 2

- The proposed project area has been adjusted in three areas:
 - Extended to the west to accommodate the new OEA;
 - Extended to the northeast to cover the Integra rail loadout facility; and
 - Adjusted in the southeast to remove the rest stop.

The latter two adjustments have not been explained in the EIS or the Revised RTS. Can you please provide context on these changes?

Response 2

There has been no extension of the project area to the northeast. The Rixs Creek washed coal stockpile and train loader were shown included in Figure 1-3 SSD EIS, and included in the existing permitted mining area resulting from the compliance matters. However included in SSD 6300 RRTS is a commitment by Bloomfield to relinquish consent granted under DA 49/94 Mod 5 to construct a rail loop and train loader within the DA 49/94 project area. This Mod 5 infrastructure has not currently been constructed.

The project area has been adjusted in the south east to remove the rest stop. As outlined in SSD 6300 RRTS section 2.4 the land on which the rest stop was constructed was acquired by the RMS for this purpose in January 2012. This Lot 4 in Deposited Plan (DP) 1123099 and part Lot 40 DP 1014997 has been removed from the project area in RRTS to achieve clarification of all areas to be contained within the new project area.

DP&E Question 3

What is the surface area of the current and proposed project area?

Response 3

The surface area of the current project area is 1017 hectares, the surface area for the proposed project area is 212.79 hectares, which will provide a total surface area of 1219.79ha.

DP&E Question 4

- Please provide an updated approved project layout, similar to Figure 1-3 of the EIS with the following changes:
 - Show only the approved DA 49/94 boundary ie remove the lease extension area to the west and the extension area to the northeast over the Integra rail loadout facility;
 - Label the Integra rail loop and loadout facility;
 - Show the approved internal haul road to Rix's Creek North; and
 - Show the approved disturbance areas (ie green area in court order).

Response 4

Please see a copy of the requested figure attached to this memo as **Figure 1**.

DP&E Question 5

- I note that Garry provided an updated project layout on 19 December 2017, however this figure still needs some adjustments to clearly depict the proposed project. The following changes are requested:
 - Label the pits to align with the nomenclature used in the Revised RTS eg Pit 1 instead of Artes Pit and North Pit instead of North Pit Activity Area;
 - Label the 'North Pit Area' mining area in pink;
 - In the legend 'Mining Area' should be relabelled as the new mining area (or some way to differentiate it from the existing mining area);
 - Show and label Rixs Creek and Stonequarry Gully;
 - Show and label key project components, similar to Figure 1-4 of the EIS ie OEAs ie tailings facilities, water storages, infrastructure areas etc;
 - Label the Integra rail loop and loadout facility; and
 - In the figure provided by Garry the project boundary has changed near the rest stop.

Response 5

Please see a copy of the requested figure attached to this memo as **Figure 2**.

2.0 Air Quality

DP&E Air Quality Question

What are the lot and DP details for Receiver 1?

Air Quality Response

Receiver 1 is situated on Lot 1 DP 1137660.

3.0 Noise

DP&E Noise Question

The EIS and the Revised RTS mention that the critical sides of the wash plant will be cladded. When will this occur?

Noise Response

Bloomfield will commit to clad the two critical sides of the washing plant with 12 months of the granting of consent for SSD 6300.

4.0 Blasting

DP&E Blasting Question

What are the minimum separation distances between the blast monitoring locations and the closest blasting in the future mining areas?

Blasting Response

A revised Blasting Specialist Report (Terrock, 2018) has been prepared and will be provided to DP&E separately to this memo. Minimum separation distances are detailed in that report and summarised in **Table 1**. Bloomfield purchased the Ernst property in 2016 and the Dunn property in 2017. The revised Rix’s Creek Blast Management Plan (as approved by DP&E Compliance and EPA) monitoring locations for Blasting are now Watling, Retreat, Mines Rescue and Wright.

Table 1 Minimum Blasting Separating Distances

Watling	Retreat	Mines Rescue	Wright
North Pit Blasting, Minimum Distance to Monitor in Metres (m)			
4,895	2,284	3,110	3,451
West Pit Blasting, Minimum Distance to Monitor in Metres (m)			
3,662	3,577	3,883	2,089

5.0 Land and Soil Resources

DP&E Land and Soil Resources Question.

Table 3-6 of the Revised RTS provides a comparison of the pre and post land and soil capability for the entire Rix’s Creek site. Are you able to provide this comparison for just the Project’s disturbance area (ie 212.79 ha)? The EIS had this comparison for a 339.5 ha study area (Table 10 of Appendix N of the EIS). However, this area included areas that were considered under the consent orders.

Land and Soil Resources Response

The land and soil capability for the New Disturbance Area is provided in **Table 2**.

Table 2 New Disturbance Area Land and Soil Capability

Soil Capability Class	Pre-Mining (ha)	Post-Mining (ha)
4 (<10 degree slope)	211.8	139
4 (10 degree slope)	-	0.6
5 (10 - 18 degree slope)	1.1	18.4
6(>18 degree slope)	-	4.75
Inundation (void water)	-	50.15
Total	212.9	212.9

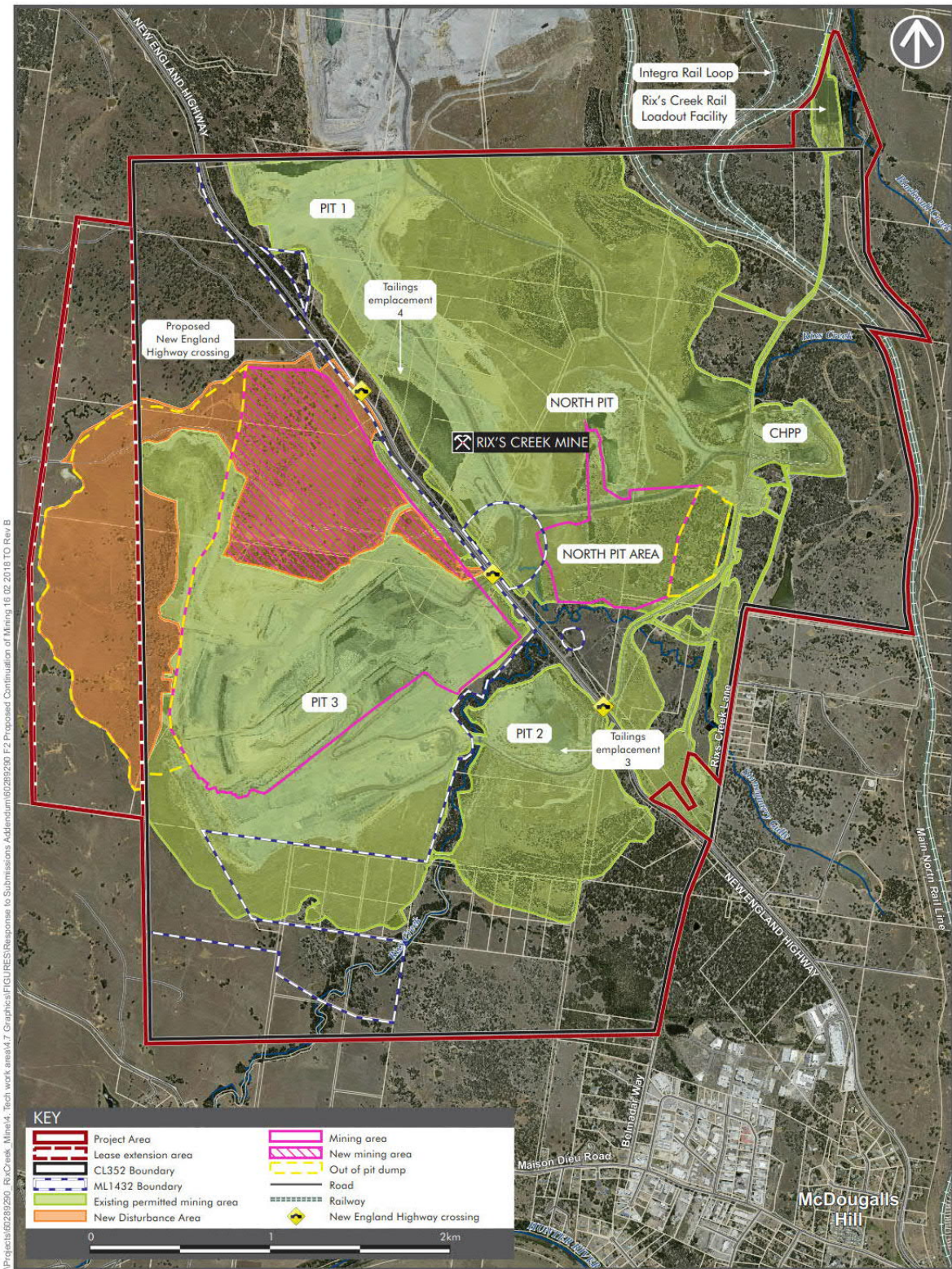
Should you have any further questions please don't hesitate to contact the undersigned or Garry Bailey (0407 938 003).

Simon Murphy
Principal Environmental Planner
simon.murphy@aecom.com
Mobile: 0428 626 952
Direct Dial: +61 2 4911 4977



I:\Projects\60289290_RixCreek_Mine\4_Tech work areas\4.7_Graphics\FIGURES\Response to Submissions Addendum\60289290_F1_Existing Site Layout_18 02 2018.TD

FIGURE 1



AECOM

PROPOSED CONTINUATION OF MINING
Rix's Creek Continuation of Mining
Response to Submissions

FIGURE 2