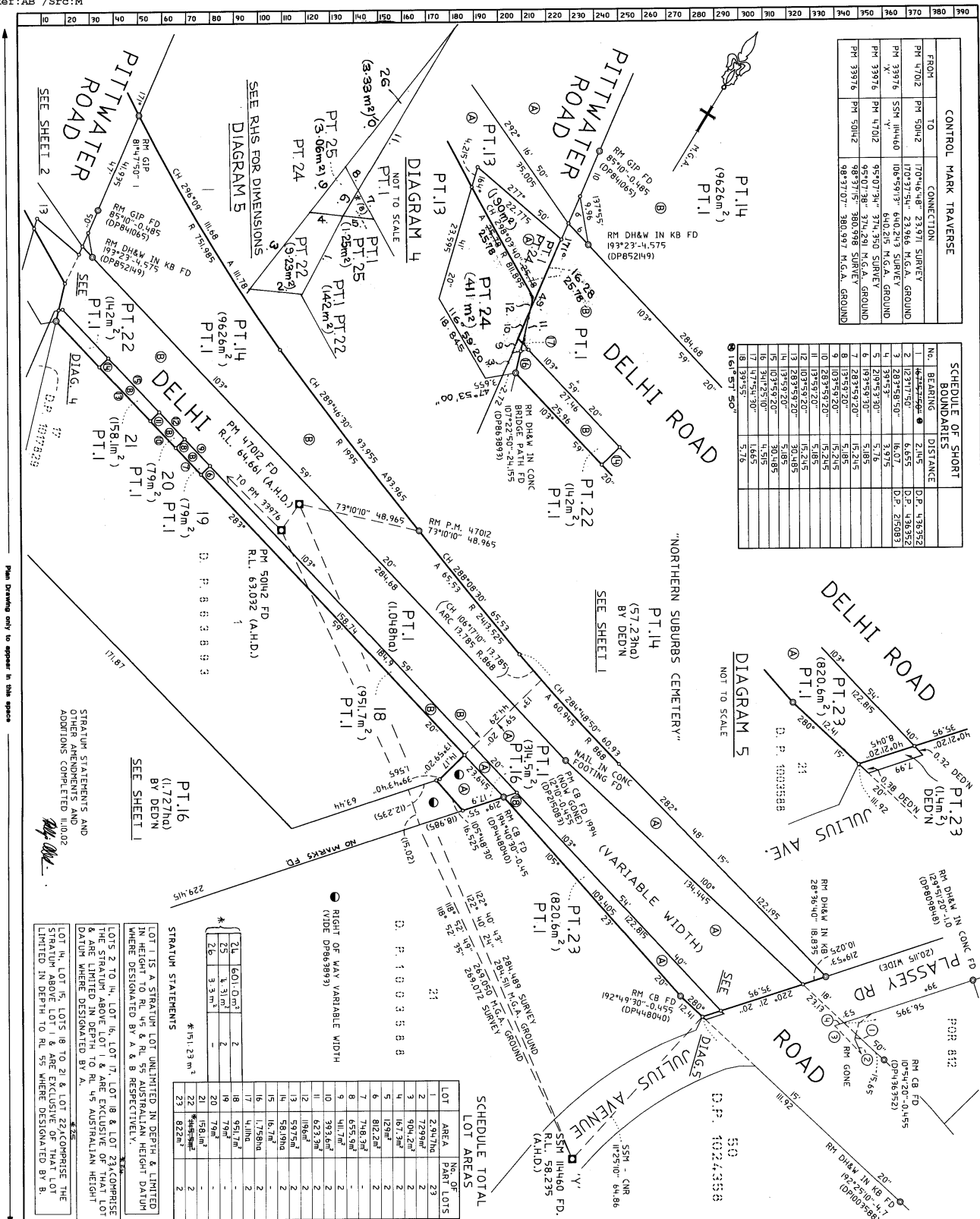


PLAN FORM 3

WARNING: CREASING OR FOLDING WILL LEAD TO REJECTION



FROM	TO	CONTROL MARK TRAVERSE
PH 4702	PH 50H2	CONNECTION
PH 33976	SSM 1H460	70°46'48" 23.971 SURVEY
PH 33976	SSM 1H460	106°57'51" 64.236 M.G.A. GROUND
PH 4702	PH 50H2	95°07'34" 374.350 SURVEY
PH 33976	PH 50H2	95°07'38" 374.491 M.G.A. GROUND
		98°37'07" 380.598 SURVEY
		98°37'07" 380.997 M.G.A. GROUND

No.	BEARING	DISTANCE	D.P.	1:78,352
1	123°17'30"	6.555	D.2	4.78352
2	128°43'30"	8.975	D.2	6.70833
3	209°52'30"	5.716	D.2	4.14515
4	193°52'30"	5.185	D.2	3.73485
5	103°52'30"	5.215	D.2	3.75485
6	103°52'30"	5.215	D.2	3.75485
7	103°52'30"	5.215	D.2	3.75485
8	103°52'30"	5.215	D.2	3.75485
9	103°52'30"	5.215	D.2	3.75485
10	103°52'30"	5.215	D.2	3.75485
11	103°52'30"	5.215	D.2	3.75485
12	103°52'30"	5.215	D.2	3.75485
13	103°52'30"	5.215	D.2	3.75485
14	103°52'30"	5.215	D.2	3.75485
15	103°52'30"	5.215	D.2	3.75485
16	103°52'30"	5.215	D.2	3.75485
17	103°52'30"	5.215	D.2	3.75485
18	103°52'30"	5.215	D.2	3.75485
19	103°52'30"	5.215	D.2	3.75485
20	103°52'30"	5.215	D.2	3.75485
21	103°52'30"	5.215	D.2	3.75485
22	103°52'30"	5.215	D.2	3.75485
23	103°52'30"	5.215	D.2	3.75485
24	103°52'30"	5.215	D.2	3.75485
25	103°52'30"	5.215	D.2	3.75485
26	103°52'30"	5.215	D.2	3.75485

LOT	AREA	No. OF PART LOTS
1	2,917.16	23
2	729.76	2
3	104.27	2
4	161.25	2
5	152.72	2
6	812.24	2
7	716.52	2
8	655.52	2
9	111.72	2
10	393.62	2
11	623.32	2
12	116.62	2
13	597.52	2
14	58.19	2
15	16.72	2
16	1,758.0	2
17	4.12	2
18	951.72	2
19	792.12	2
20	792.12	2
21	158.12	2
22	158.12	2
23	822.12	2

24	601.02	2
25	1.31	2
26	3.33	2

STRATUM STATEMENTS
 LOT 1 IS A STRATUM LOT UNLIMITED IN DEPTH & LIMITED IN HEIGHT TO RL 48 & RL 59 AUSTRALIAN HEIGHT DATUM WHERE DESIGNATED BY A & B RESPECTIVELY.
 LOTS 2 TO 14, LOT 16, LOT 17, LOT 18 & LOT 23 COMPRISE THE STRATUM ABOVE LOT 1 & ARE EXCLUSIVE OF THAT LOT DATUM WHERE DESIGNATED BY A.
 LOT 15, LOT 19, LOT 20, LOT 21 & LOT 22 COMPRISE THE STRATUM ABOVE LOT 1 & ARE EXCLUSIVE OF THAT LOT LIMITED IN DEPTH TO RL 55 WHERE DESIGNATED BY B.

Plan Drawing only to appear in this space

Reduction Ratio 1:1000

BEARING SHORT LINE 1 ALTERED IN LPI (NSW) AT SURVEYOR'S REQUEST 12-11-2002

* AMENDMENTS ADDED IN L.P.I. VIDE 2005/334

DP1043038
 Registered
 13.06.2003
 This is sheet 3 of 3 of plan 3 sheets
 Drawn/checked by [Signature]
 Surveyed/checked by [Signature]
 This is sheet 3 of 3 of plan 3 sheets
 Drawn/checked by [Signature]
 Surveyed/checked by [Signature]

1	161,251.00	4,515
2	2,277.55	2,712
3	3,511.48	4,599
4	4,775.43	1,718
5	227,543.00	1,665
6	341,251.00	1,64
7	103,592.00	1,81
8	103,592.00	1,24
9	351,049	3,05
10	351,049	5,79
11	161,251.00	6,65
12	341,251.00	3,195

LOTS 24-26 ADDED IN LPI 12.02.05
 SURVEYOR'S REFERENCE: 29004DP2 / 3