

1 Building C East Elevation 1:200



2 Building C West Elevation 1:200

NSW GOVERNMENT Planning

Issued under the Environmental Planning and Assessment Act 1979

Approved Section 96 (1A) (1) (2) Modification Application No. 2 granted on the 11 Sept 2015

in respect to MP SSD 6246

Signed [Signature]

Sheet No. 17 of 23

NOTES

1. ALL DIMENSIONS ARE TO FACE UNLESS OTHERWISE SPECIFIED.

2. ALL DIMENSIONS ARE TO FACE UNLESS OTHERWISE SPECIFIED.

3. ALL DIMENSIONS ARE TO FACE UNLESS OTHERWISE SPECIFIED.

4. ALL DIMENSIONS ARE TO FACE UNLESS OTHERWISE SPECIFIED.

5. ALL DIMENSIONS ARE TO FACE UNLESS OTHERWISE SPECIFIED.

Client

Meriton
528 Kent Street Sydney NSW 2000

MATERIALS & FINISHES LEGEND

BAL1 Balustrade Type 1: clear glazing, frameless

BAL2 Balustrade Type 2: precast concrete, painted white & clear glazing

CON1 Concrete Type 1: precast concrete - off white

CON2 Concrete Type 2: precast feature spandrel - off white

CON3 Concrete Type 3: precast concrete roof feature - dark grey, white to u/s

CON4 Concrete Type 4: concrete - dark grey

CON5 Concrete Type 5: concrete - light grey to match glazing frame

CON6 Concrete Type 6: concrete - mid grey

CON7 Concrete Frame or Metal Cladding - light beige (sand)

FEN1 Fence Type 1: anodised aluminium - dark grey

FM Feature Projecting Mullion: aluminium, powder coated - metallic grey

GLZ1 Glazing Type 1: clear glazing, natural anodised aluminium frame

GLZ2 Glazing Type 2: grey glazing, powder coated / anodised frame - dark grey

GLZ3 Glazing Type 3: colour back spandrel panel to match clear glazing, natural anodised aluminium frame

GLZ4 Glazing Type 4: colour back spandrel panel to match grey glazing, powder coated / anodised frame - mid grey

GLZ5 Glazing Type 5: clear glass louvers with restricted operation

GT1 Garage Door: metal roller shutter door, finish TBC - dark grey

LVR1 Louvre Type 1: aluminium, powder coated - dark grey

MET1 Metal Cover Plate: aluminium, natural anodised to match glazing system

MET2 Metal Cladding: aluminium composite panel - colour TBC

MET3 Metal Frame: aluminium, powder coated - dark grey

PGA1 Pergola: powder coated / painted - charcoal

SCR1 Privacy Screen Type 1: aluminium, powdercoated, brass - bronze

SCR2 Privacy Screen Type 2: aluminium, powdercoated - off white

SCR3 Condenser Screen: aluminium, powdercoated - grey

SCR4 Privacy Screen Type 2: aluminium, powdercoated - colours vary

STN1 Stone Cladding: sandstone

WT1 Feature Window Type 1: projecting aluminium frame, powder coated / anodised - charcoal, feature colour to inside frame

WT2 Feature Window Type 2: aluminium frame, powder coated / anodised - charcoal

Project Title

Residential Development
100 Bennelong Road Olympic Park NSW 2127

GA Elevation
Building C East & West Elevations

100 BENNELONG PARKWAY SECTION 96 MODIFICATION

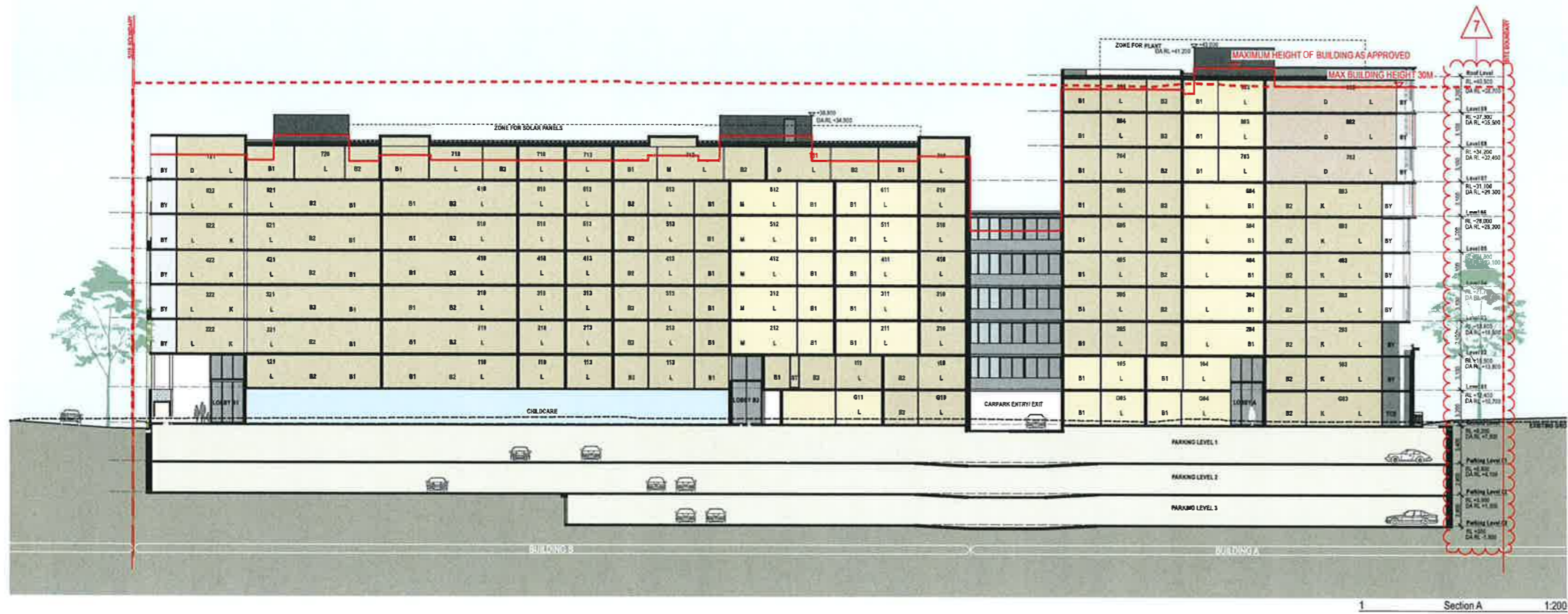
7. BUILDING HEIGHT ADJUSTED IN RELATION TO WOOLACOTT'S NEW ROAD LEVELS

11/09/15 10:00 AM For SSD E248 MOD 2
17/08/15 10:00 AM For SSD E248 MOD 2

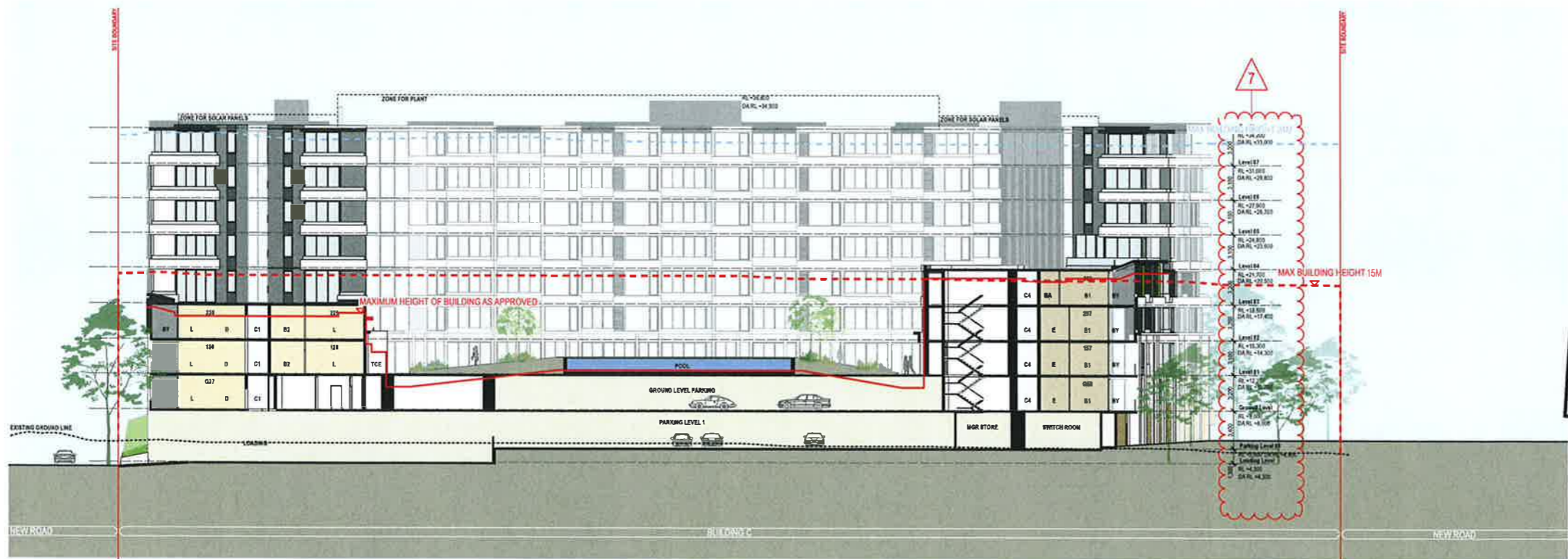
Scale: 1:200
Drawn by: MP
Checked by: K

Project No: 13056
Drawing No: A-SSD-210-003

turner



1 Section A 1:200



2 Section B 1:200

NSW GOVERNMENT Planning

Issued under the Environmental Planning and Assessment Act 1979

Approved Section 96 (1A) (1) (2) Modification Application No. 2 granted on the 11 Sept 2015

in respect to MP SSD.62.4.6

Signed [Signature]

Sheet No. 18 of 23

NOTES

1. ALL DIMENSIONS ARE IN METRES UNLESS OTHERWISE SPECIFIED.

2. THE CONTRACTOR SHALL BE RESPONSIBLE FOR OBTAINING ALL NECESSARY PERMITS AND APPROVALS FROM THE RELEVANT AUTHORITIES.

3. THE CONTRACTOR SHALL BE RESPONSIBLE FOR OBTAINING ALL NECESSARY PERMITS AND APPROVALS FROM THE RELEVANT AUTHORITIES.

4. THE CONTRACTOR SHALL BE RESPONSIBLE FOR OBTAINING ALL NECESSARY PERMITS AND APPROVALS FROM THE RELEVANT AUTHORITIES.

CLIENT

Meriton
528 Kent Street Sydney NSW 2000

MATERIALS & FINISHES LEGEND

BAL1 Balustrade Type 1: clear glazing, frameless

BAL2 Balustrade Type 2: precast concrete, painted white & clear glazing

CON1 Concrete Type 1: precast concrete - off white

CON2 Concrete Type 2: precast feature spandrel - off white

CON3 Concrete Type 3: precast concrete roof feature - dark grey, white to s/s

CON4 Concrete Type 4: concrete - dark grey

CONS Concrete Type 5: concrete - light grey to match glazing frame

CON6 Concrete Type 6: concrete - mid grey

CONF Concrete Frame or Metal Cladding - light beige (sand)

FEN1 Fence Type 1: anodised aluminium - dark grey

FM Feature Projecting Mullion: aluminium, powder coated - metallic grey

GLZ1 Glazing Type 1: clear glazing, natural anodised aluminium frame

GLZ2 Glazing Type 2: grey glazing, powder coated / anodised frame - dark grey

GLZ3 Glazing Type 3: colour back spandrel panel to match clear glazing, natural anodised aluminium frame

GLZ4 Glazing Type 4: colour back spandrel panel to match grey glazing, powder coated / anodised frame - mid grey

GLZ5 Glazing Type 5: clear glass louvers with restricted operation

GT1 Garage Door: metal roller shutter door, finish TBC - dark grey

LVR1 Louvre Type 1: aluminium, powder coated - dark grey

ME1 Metal Cover Plate: aluminium, natural anodised to match glazing system

ME2 Metal Cladding: aluminium composite panel - colour TBC

ME3 Metal Frame: aluminium, powder coated - dark grey

PGA1 Paint: powder coated / painted - charcoal

SCR1 Privacy Screen Type 1: aluminium, powder coated, brass - bronze

SCR2 Privacy Screen Type 2: aluminium, powder coated - off white

SCR3 Condenser Screen: aluminium, powder coated - grey

SCR4 Privacy Screen Type 2: aluminium, powder coated - colours vary

STN1 Stone Cladding: sandstone

WT1 Feature Window Type 1: projecting aluminium frame, powder coated / anodised - charcoal, feature colour to inside frame

WT2 Feature Window Type 2: aluminium frame, powder coated / anodised - charcoal

Project: Residential Development
100 Bennelong Road Olympic Park NSW 2127

Scale: 1:200, 1:500, 1:1000, 1:2000, 1:5000, 1:10000

Drawn by: J

GA Sections
Section A, Section B

100 BENNELONG PARKWAY
SECTION 96 MODIFICATION

7. BUILDING HEIGHT ADJUSTED IN RELATION TO WOOLACOTTS NEW ROAD LEVELS

J 11.08.15 JM For SSD E26 MOD 2
1 17.08.15 PD For SSD E26 MOD 2

Scale: 1:200, 1:500, 1:1000, 1:2000, 1:5000, 1:10000

Drawn by: J

GA Sections
Section A, Section B

turner



NSW GOVERNMENT
Planning

Issued under the Environmental Planning and Assessment Act 1979

Approved Section 96 (1A) (1) (2) Modification Application

No. 2 granted on the 11 Sept 2015

in respect to MP SSD 6246

Signed [Signature]

Sheet No. 19 of 23



3 Section C 1:200

100 BENNELONG PARKWAY
SECTION 96 MODIFICATION
7. BUILDING HEIGHT ADJUSTED IN RELATION TO
WOOLACOTTS NEW ROAD LEVELS

NOTES
1. THIS DRAWING IS THE PROPERTY OF TURNER & MORTIMER ARCHITECTS AND ENGINEERS. ANY REUSE OR REPRODUCTION OF THIS DRAWING WITHOUT THE WRITTEN PERMISSION OF TURNER & MORTIMER ARCHITECTS AND ENGINEERS IS STRICTLY PROHIBITED.
2. THIS DRAWING IS VALID FOR THE PROJECT ONLY AND IS NOT TO BE USED FOR ANY OTHER PROJECT.
3. ALL DIMENSIONS ARE IN METRES UNLESS OTHERWISE SPECIFIED.
4. ALL LEVELS ARE TO FINISH UNLESS OTHERWISE SPECIFIED.
5. ALL WALLS ARE TO BE CONCRETE UNLESS OTHERWISE SPECIFIED.
6. ALL FLOORS ARE TO BE CONCRETE UNLESS OTHERWISE SPECIFIED.
7. ALL ROOFS ARE TO BE CONCRETE UNLESS OTHERWISE SPECIFIED.
8. ALL EXTERIOR FINISHES ARE TO BE AS SHOWN UNLESS OTHERWISE SPECIFIED.
9. ALL INTERIOR FINISHES ARE TO BE AS SHOWN UNLESS OTHERWISE SPECIFIED.
10. ALL SERVICES ARE TO BE AS SHOWN UNLESS OTHERWISE SPECIFIED.

CLIENT
Meriton
528 Kent Street Sydney NSW 2000

MATERIALS & FINISHES LEGEND
BAL1 Balustrade Type 1: clear glazing, frameless
BAL2 Balustrade Type 2: precast concrete, painted white & clear glazing
CON1 Concrete Type 1: precast concrete - off white
CON2 Concrete Type 2: precast feature spandrel - off white
CON3 Concrete Type 3: precast concrete roof feature - dark grey, white to u/s
CON4 Concrete Type 4: concrete - dark grey

CONS Concrete Type 5: concrete - light grey to match glazing frame
CON6 Concrete Type 6: concrete - mid grey
CONF Concrete Frame or Metal Cladding - light beige (sand)
FEN1 Fence Type 1: anodised aluminium - dark grey
FM Feature Projecting Mullion: aluminium, powder coated - metallic grey
GLZ1 Glazing Type 1: clear glazing, natural anodised aluminium frame

GLZ2 Glazing Type 2: grey glazing, powder coated / anodised frame - dark grey
GLZ3 Glazing Type 3: colour back spandrel panel to match clear glazing, natural anodised aluminium frame
GLZ4 Glazing Type 4: colour back expanded panel to match grey glazing, powder coated / anodised frame - mid grey
GLZ5 Glazing Type 5: clear glass louvers with restricted operation

GT1 Garage Door: metal roller shutter door, finish TBC - dark grey
LVR1 Louvre Type 1: aluminium, powder coated - dark grey
MET1 Metal Cover Plate: aluminium, natural anodised to match glazing system
MET2 Metal Cladding: aluminium composite panel - colour TBC
MET3 Metal Frame: aluminium, powder coated - dark grey
PGA1 Pergola: powder coated / painted - charcoal
SCR1 Privacy Screen Type 1: aluminium, powder coated, brass - bronze

SCR2 Privacy Screen Type 2: aluminium, powder coated - off white
SCR3 Condenser Screen: aluminium, powder coated - grey
SCR4 Privacy Screen Type 2: aluminium, powder coated - colours vary
STW1 Store Cladding: sandstone
WT1 Feature Window Type 1: projecting aluminium frame, powder coated / anodised - charcoal, feature colour to trade frame
WT2 Feature Window Type 2: aluminium frame, powder coated / anodised - charcoal

Project No.
100 Bennelong Road Olympic Park NSW 2127
Drawing No.
GA Sections Section C

Scale
1:200
Date
08/11/15
Project No.
13056
Drawing No.
A-SSD-310-002
Client
Meriton
Project Manager
J





NOTES:
 1. THIS DRAWING IS THE PROPERTY OF TURNER & MORTIMER ARCHITECTS. IT IS TO BE USED ONLY FOR THE PROJECT AND SITE SPECIFICALLY IDENTIFIED IN THE TITLE BLOCK.
 2. ANY REVISIONS TO THIS DRAWING MUST BE APPROVED BY TURNER & MORTIMER ARCHITECTS.
 3. THIS DRAWING IS NOT TO BE USED FOR ANY OTHER PURPOSES WITHOUT THE WRITTEN CONSENT OF TURNER & MORTIMER ARCHITECTS.

CLIENT:
 Meriton
 528 Kent Street Sydney NSW 2000

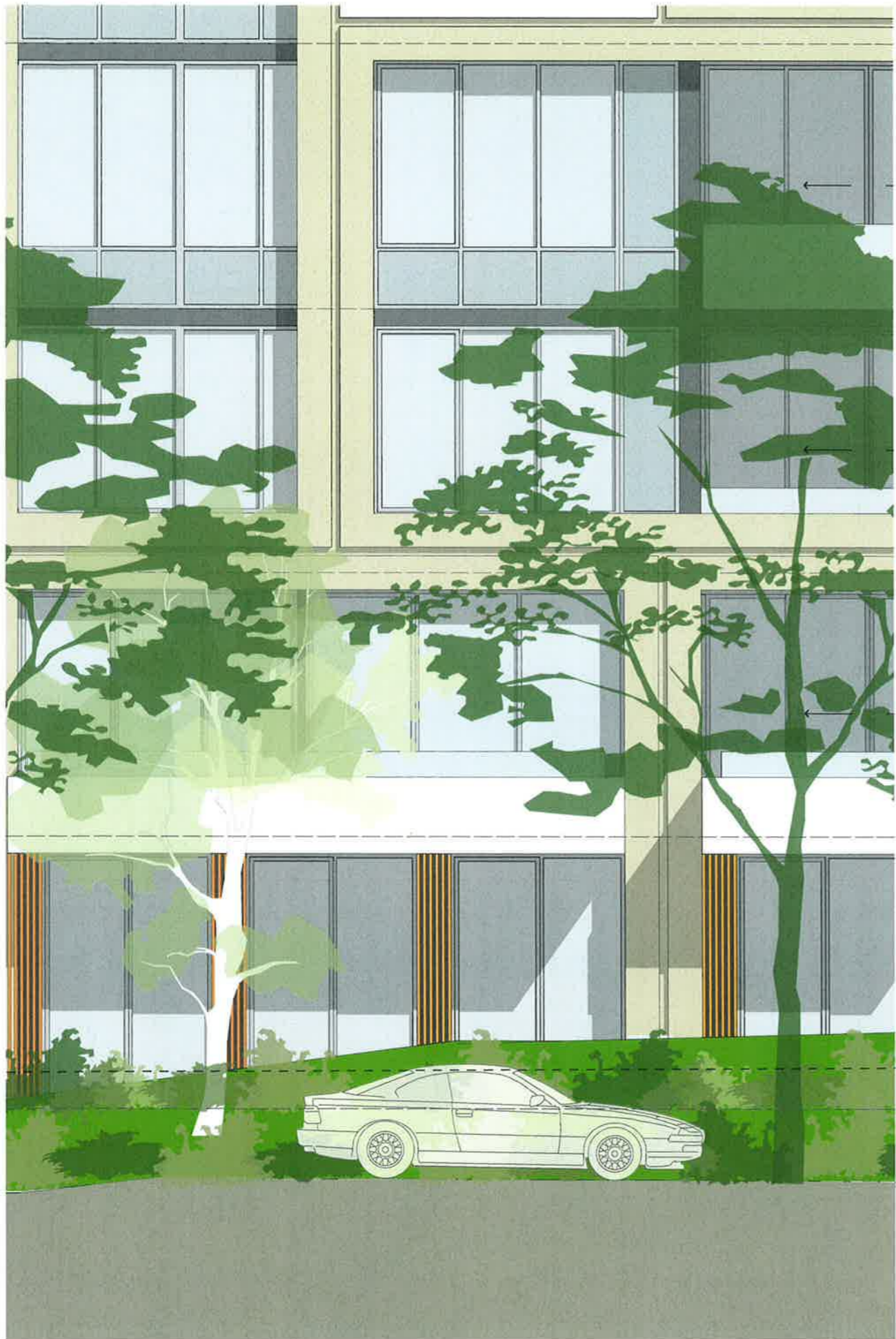
3. 2/3 Design Council Sydney 8/2/15 2/15, License Number 4718
 4. 2/3 Design Council Sydney 8/2/15 2/15, License Number 4718

Project Title: Residential Development
 100 Bennelong Road Olympic Park NSW 2127
 Drawing Title: GA Sections
 Delat Section - Ground Level Apartments

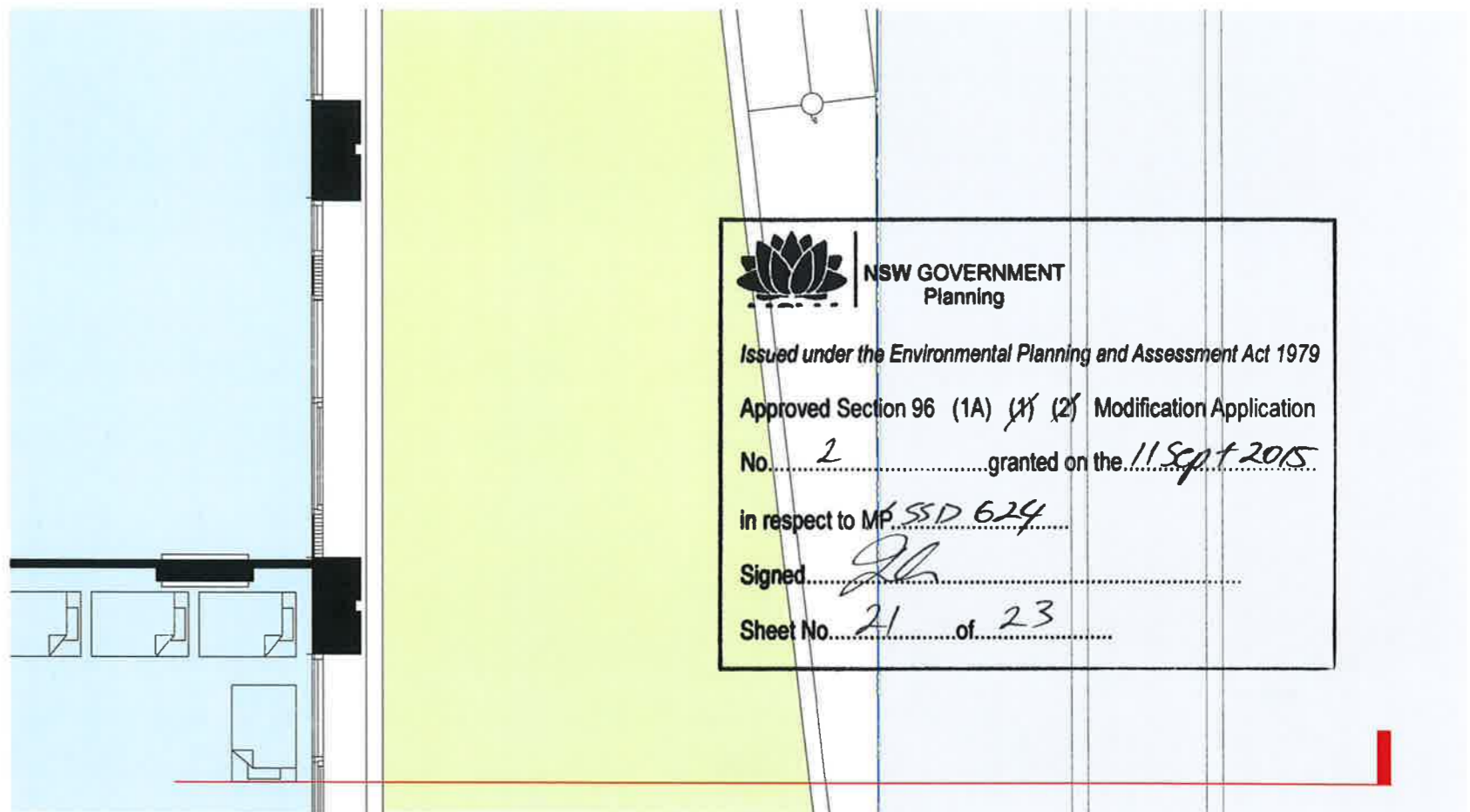
Scale: 1:50 @ A1
 Date: 11/09/15
 Project No: 13056
 Drawing No: A-SSD-310-003

Drawn by: MP
 Rev: F

turner

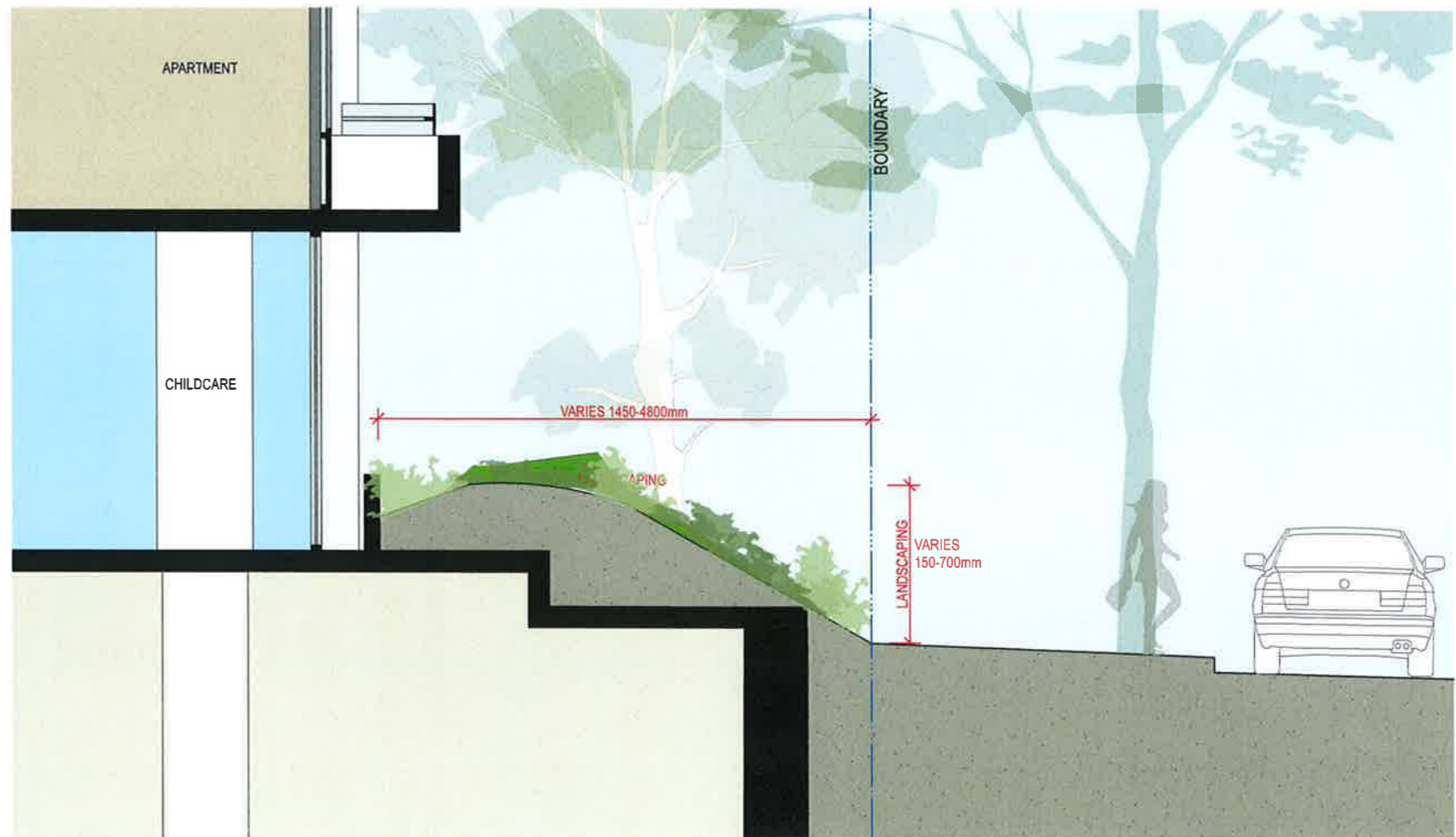


3 Detailed Elevation East_B 1:25



1 Detail Ground Plan through Childcare 1:25


NSW GOVERNMENT
 Planning
 Issued under the Environmental Planning and Assessment Act 1979
 Approved Section 96 (1A) (1) (2) Modification Application
 No. 2 granted on the 11 Sept 2015
 in respect to MP SSD 624
 Signed [Signature]
 Sheet No. 21 of 23



2 Section E 1:25

NOTES:
 1. ALL DIMENSIONS ARE TO FACE UNLESS OTHERWISE SPECIFIED.
 2. ALL DIMENSIONS ARE TO FACE UNLESS OTHERWISE SPECIFIED.
 3. ALL DIMENSIONS ARE TO FACE UNLESS OTHERWISE SPECIFIED.
 4. ALL DIMENSIONS ARE TO FACE UNLESS OTHERWISE SPECIFIED.
 5. ALL DIMENSIONS ARE TO FACE UNLESS OTHERWISE SPECIFIED.

CLIENT:
Meriton
 528 Kent Street Sydney NSW 2000

Project Title: Residential Development
 100 Bennelong Road Olympic Park NSW 2127
 Drawing Title: GA Sections
 Detail Section - Building B Ground Level - Childcare

Rev	Desc	Appr'd By	Number/Date	Drawn By	Scale
1	ISSUE		13056	MP	
2	REVISED		A-SSD-310-004	E	

turner
 Level 11/112 Cross Street
 Sydney NSW 2000
 Australia



3 Detail Elevation West_C 1:25

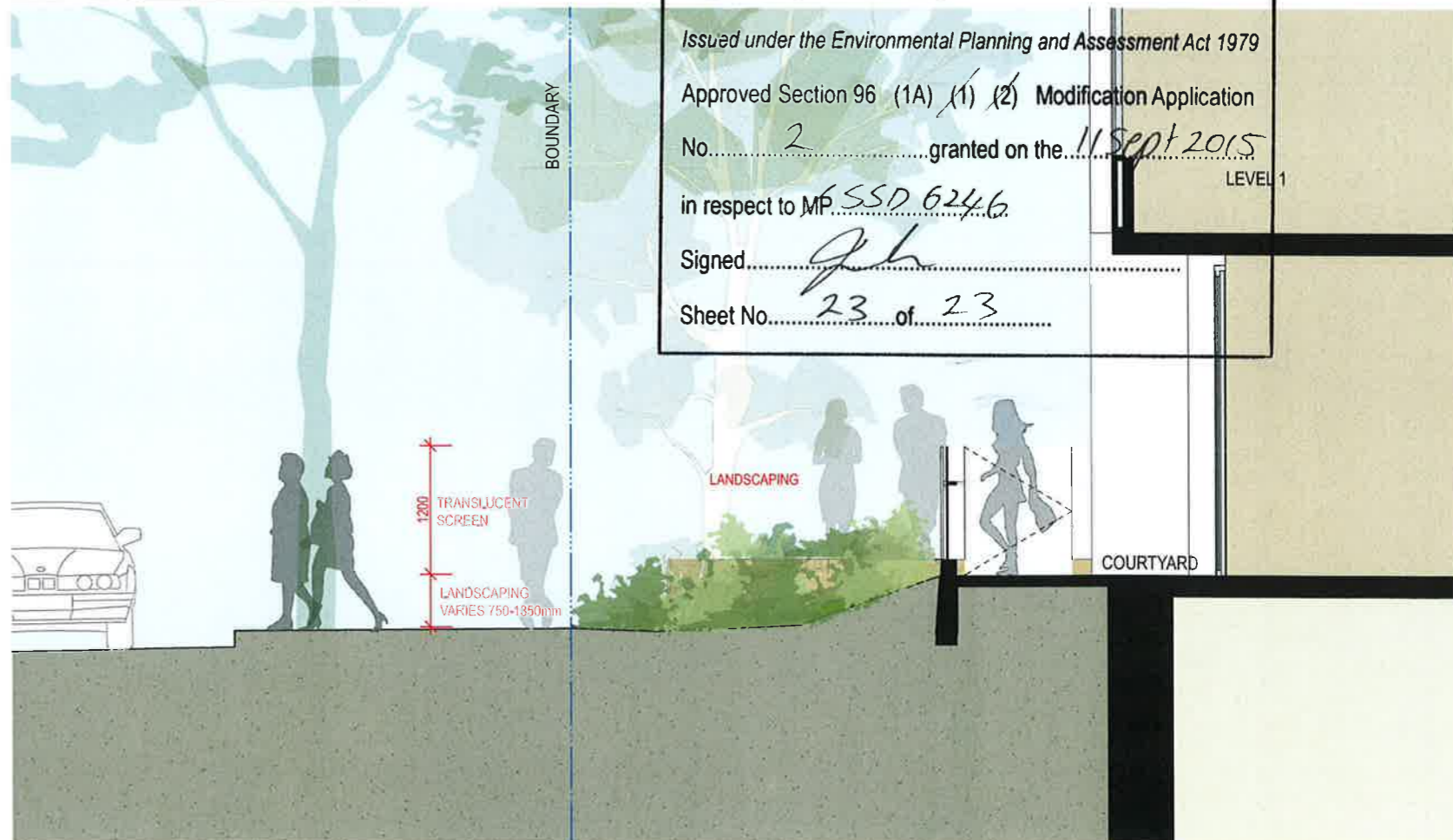
NOTES
 1. ALL DIMENSIONS ARE TO FACE UNLESS OTHERWISE SPECIFIED.
 2. ALL DIMENSIONS ARE TO FACE UNLESS OTHERWISE SPECIFIED.
 3. ALL DIMENSIONS ARE TO FACE UNLESS OTHERWISE SPECIFIED.

CLIENT
 Meriton
 528 Kent Street Sydney NSW 2000

© 2015 Meriton Residential Developments Pty Ltd. All Rights Reserved.



1 Street View Building C towards South



2 Section D 1:25

NSW GOVERNMENT
 Planning

Issued under the Environmental Planning and Assessment Act 1979
 Approved Section 96 (1A) (1) (2) Modification Application
 No. 2 granted on the 11 Sept 2015
 in respect to MP SSD 624.6
 Signed [Signature]
 Sheet No. 23 of 23

LEVEL 1

BOUNDARY

LANDSCAPING

COURTYARD