

THE NEXT GENERATION- ENERGY FROM WASTE FACILITY

EASTERN CREEK, SYDNEY



PROPRIETOR

VEHICLE MOVEMENT & TRAFFIC SIGNAGE

ARCHITECT

a level 7 97 pacific highway
north sydney new 2000
m po box 726 north sydney new 2059
p +61(0)2 9900 6000 f +61(0)2 9900 6001
www.krikistaylor.com.au

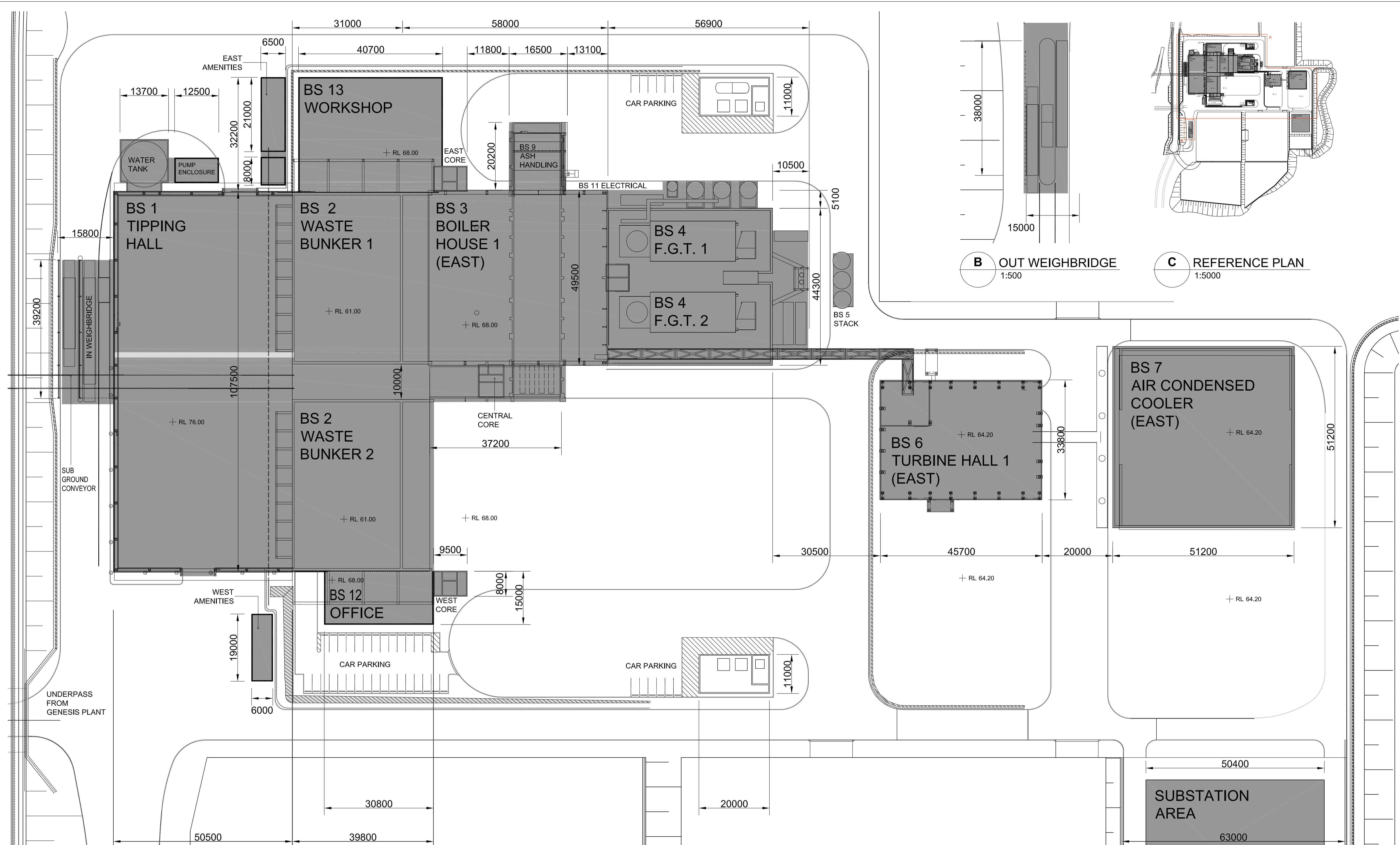


PRELIMINARY

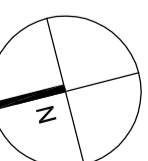
DATE 18.09.2017
SCALE 1:1500 @ A1

DRAWING NO. 112.5

ISSUE
AR-KTA-1002 5



A FLOOR PLAN
1:500



DO NOT SCALE DRAWINGS.
VERIFY ALL DIMENSIONS ON SITE.
REFER ANY DISCREPANCIES TO
THE SUPERINTENDENT BEFORE
PROCEEDING WITH THE WORK.

© krikis taylor architects Pty Ltd

These drawings are subject to copyright and may not be copied, used
or reproduced in any way without the express permission of
krikis taylor architects Pty Ltd.

100mm



PROPRIETOR

200mm

SITE DIMENSION PLAN
(STAGE 1)

300mm ON ORIGINAL

THE NEXT GENERATION- ENERGY FROM WASTE FACILITY
EASTERN CREEK, SYDNEY

ARCHITECT

a level 7 97 pacific highway
north sydney nsw 2060
m po box 720 north sydney nsw 2059
p +61(0)2 9900 6000 f +61(0)2 9900 6001
www.krikistaylor.com.au



PRELIMINARY

DATE 18.09.2017
SCALE 1:500 @ A1

DRAWING NO.

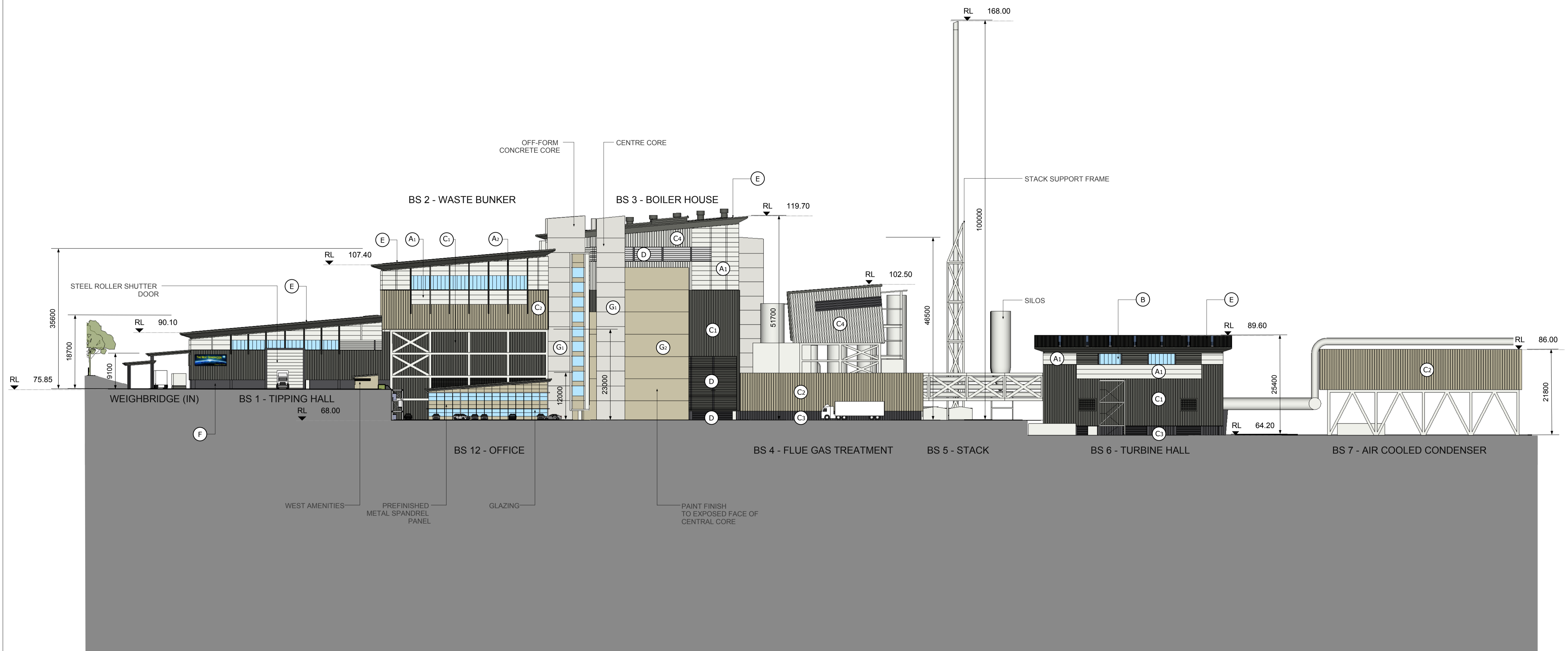
AR-KTA-1011

ISSUE

5

0 5 10 15 25 37.5

A1



LEGEND

- | | | | |
|---|---|---|--|
| (A ₁) SILVER METALLIC COMPOSITE METAL PANELS - 'ALUCOBOND' OR SIMILAR | (C) VERTICAL PRE-FINISHED PROFILED METAL CLADDING COLORBOND COLOUR; | (D) PRE-FINISHED METAL LOUVRES. SPECIFICATION IN ACCORDANCE WITH MECHANICAL AND ACOUSTIC ENGINEERING CRITERIA. POWDERCOAT FINISH TO MATCH COLORBOND 'WOODLAND GREY' | (F) CONCRETE PUSH-WALL. EXTERIOR PAINT FINISH TO MATCH COLORBOND 'MONUMENT' |
| (A ₂) DARK GREY METALLIC SOFFIT LINING, FASCIA AND PROJECTING BLADES - 'ALUCOBOND' OR SIMILAR | (C ₁) COLOUR: 'WOODLAND GREY' | (G ₁) PAINT FINISH TO OFF-FORM CONCRETE CORE - 'KEIM' 'ROYALAN' COLOUR 9590 @30% OR SIMILAR | (G ₂) PAINT FINISH TO OFF-FORM CONCRETE CORE - COLOUR TO MATCH COLORBOND COLOUR : 'COVE' |
| (B) BLUE POLYCARBONATE GLAZING - 'DANPALON DP16' 16mm MULTICELL OR SIMILAR | (C ₂) COLOUR: 'COVE' | (E) PREFINISHED ROOF DECKING ON FOIL-BACKED MINERAL WOOL INSULATION WITH SAFETY MESH SUPPORT - FIELDSERS HIKLIP 630 COLOUR: 'WOODLAND GREY' OR SIMILAR | |
| | (C ₃) COLOUR: 'MONUMENT' | | |
| | (C ₄) COLOUR: TO MATCH SILVER METALLIC | | |

THE NEXT GENERATION - ENERGY FROM WASTE FACILITY

EASTERN CREEK, SYDNEY

WEST ELEVATION (STAGE 1)

PRELIMINARY

DATE 07.09.2017
SCALE 1:500 @ A1

0 5 10 15 25 37.5 m

DRAWING NO. ISSUE

AR-KTA-1601

3

© krikis tayler architects Pty Ltd
These drawings are subject to copyright and may not be copied, used or reproduced in any way without the express permission of krikis tayler architects Pty Ltd



PROPRIETOR

ARCHITECT

a level 7 97 pacific highway
north sydney nsw 2060
m po box 726 north sydney nsw 2059
p +61(0)2 9900 6000 f +61(0)2 9900 6001
w www.krikistayler.com.au



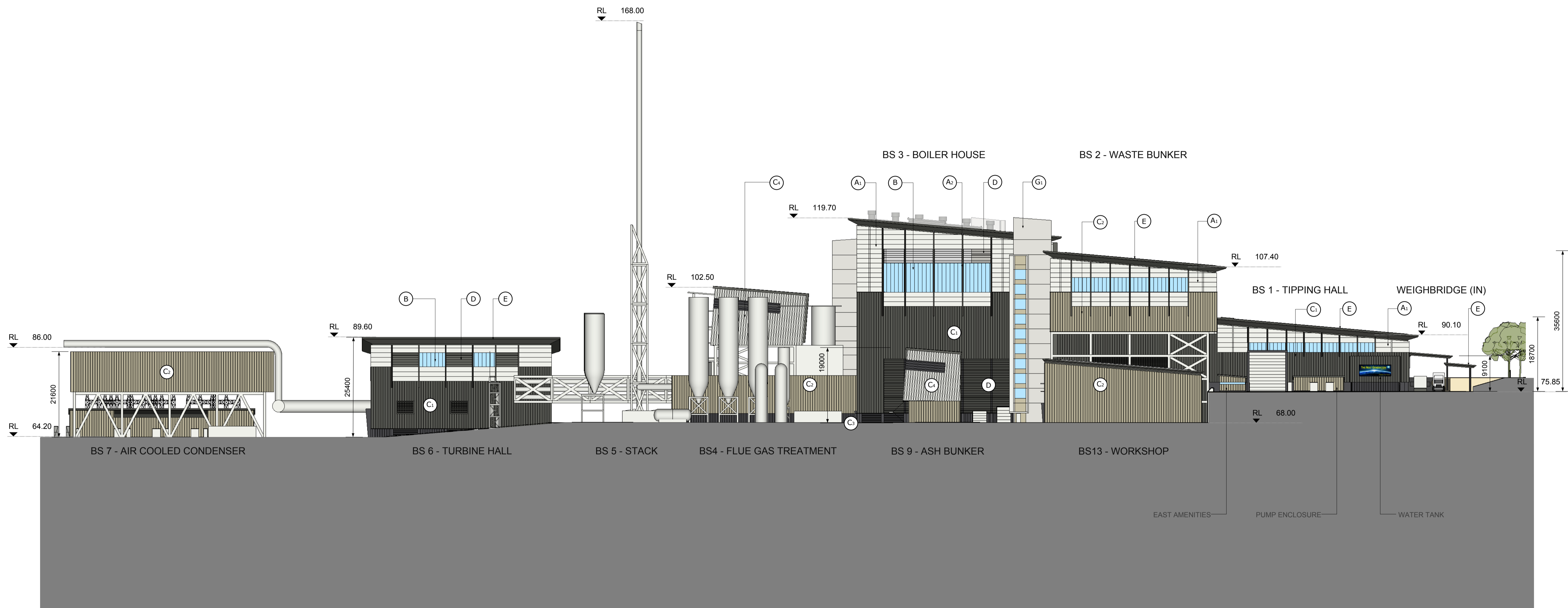
krikis tayler architects

100mm

200mm

300mm ON ORIGINAL

A1



LEGEND

- | | | | |
|---|---|---|---|
| (A ₁) SILVER METALLIC COMPOSITE METAL PANELS - 'ALUCOBOND' OR SIMILAR | (C) VERTICAL PRE-FINISHED PROFILED METAL CLADDING COLORBOND COLOUR; | (D) PRE-FINISHED METAL LOUVRES, SPECIFICATION IN ACCORDANCE WITH MECHANICAL AND ACOUSTIC ENGINEERING CRITERIA, POWDERCOAT FINISH TO MATCH COLORBOND 'WOODLAND GREY' | (F) CONCRETE PUSH-WALL EXTERIOR PAINT FINISH TO MATCH COLORBOND 'MONUMENT' |
| (A ₂) DARK GREY METALLIC SOFFIT LINING, FASCIA AND PROJECTING BLADES - 'ALUCOBOND' OR SIMILAR | (C ₁) COLOUR: 'WOODLAND GREY' | (E) PREFINISHED ROOF DECKING ON FOIL-BACKED MINERAL WOOL INSULATION WITH SAFETY MESH SUPPORT - FIELDERS HIKLIP 630 COLOUR: 'WOODLAND GREY' OR SIMILAR | (G ₁) PAINT FINISH TO OFF-FORM CONCRETE CORE - 'KEIM' 'ROYALAN' COLOUR 9590 @30% OR SIMILAR |
| (B) BLUE POLYCARBONATE GLAZING - 'DANPALON DP16' 16mm MULTICELL OR SIMILAR | (C ₂) COLOUR: 'COVE' | | (G ₂) PAINT FINISH TO OFF-FORM CONCRETE CORE - COLOUR TO MATCH COLORBOND COLOUR : 'COVE' |
| | (C ₃) COLOUR: 'MONUMENT' | | |
| | (C ₄) COLOUR: TO MATCH SILVER METALLIC | | |

THE NEXT GENERATION - ENERGY FROM WASTE FACILITY

EASTERN CREEK, SYDNEY

EAST ELEVATION (STAGE 1)

PRELIMINARY

DATE 07.09.2017
SCALE 1:500 @ A1

0 5 10 15 25 37.5 m

DRAWING NO. ISSUE

AR-KTA-1602

3

© krikis tayler architects Pty Ltd
These drawings are subject to copyright and may not be copied, used or reproduced in any way without the express permission of krikis tayler architects Pty Ltd



PROPRIETOR

ARCHITECT

a level 7 97 pacific highway
north sydney nsw 2060
m po box 726 north sydney nsw 2059
p +61(0)2 9900 6000 f +61(0)2 9900 6001
w www.krikistayler.com.au



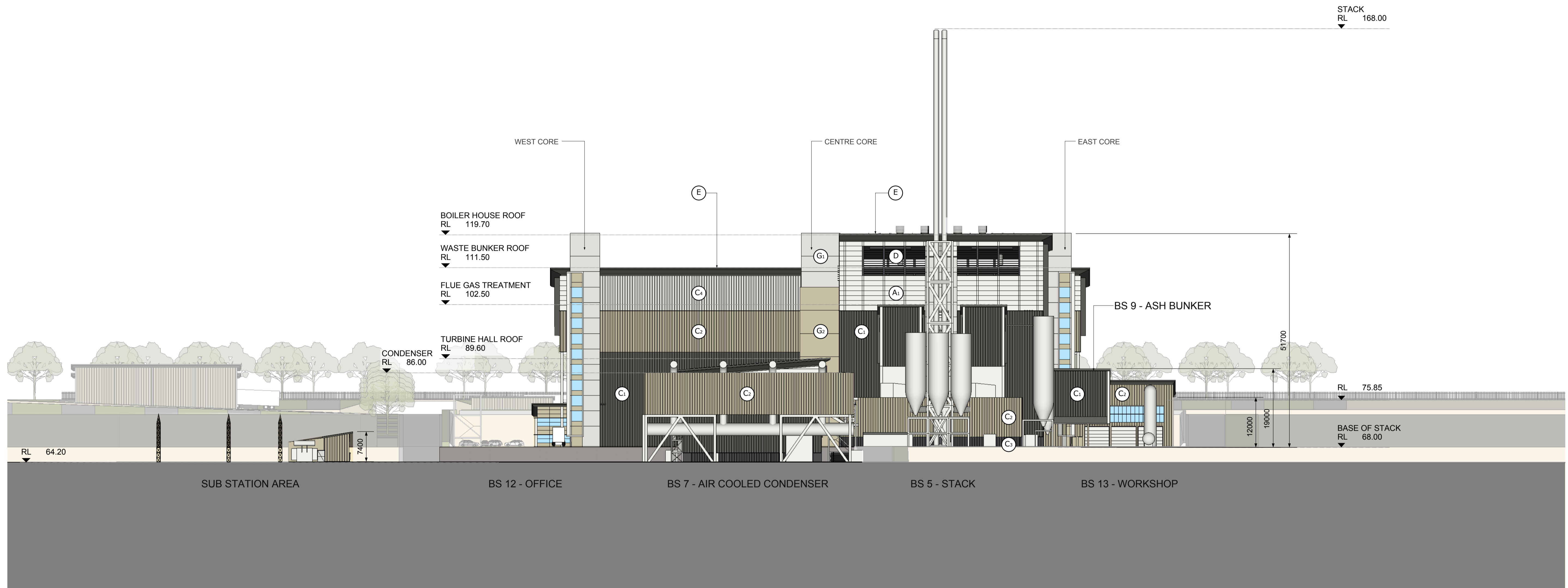
krikis tayler architects

100mm

200mm

300mm ON ORIGINAL

A1



LEGEND

- | | | | |
|---|---|---|---|
| (A ₁) SILVER METALLIC COMPOSITE METAL PANELS - 'ALUCOBOND' OR SIMILAR | (C) VERTICAL PRE-FINISHED PROFILED METAL CLADDING COLORBOND COLOUR; | (D) PRE-FINISHED METAL LOUVRES, SPECIFICATION IN ACCORDANCE WITH MECHANICAL AND ACOUSTIC ENGINEERING CRITERIA, POWDERCOAT FINISH TO MATCH COLORBOND 'WOODLAND GREY' | (F) CONCRETE PUSH-WALL EXTERIOR PAINT FINISH TO MATCH COLORBOND 'MONUMENT' |
| (A ₂) DARK GREY METALLIC SOFFIT LINING, FASCIA AND PROJECTING BLADES - 'ALUCOBOND' OR SIMILAR | (C ₁) COLOUR: 'WOODLAND GREY' | (E) PREFINISHED ROOF DECKING ON FOIL-BACKED MINERAL WOOL INSULATION WITH SAFETY MESH SUPPORT - FIELDSERS HIKLIP 630 COLOUR: 'WOODLAND GREY' OR SIMILAR | (G ₁) PAINT FINISH TO OFF-FORM CONCRETE CORE - 'KEIM' 'ROYALAN' COLOUR 9590 @30% OR SIMILAR |
| (B) BLUE POLYCARBONATE GLAZING - 'DANPALON DP16' 16mm MULTICELL OR SIMILAR | (C ₂) COLOUR: 'COVE' | | (G ₂) PAINT FINISH TO OFF-FORM CONCRETE CORE - COLOUR TO MATCH COLORBOND COLOUR : 'COVE' |
| | (C ₃) COLOUR: 'MONUMENT' | | |
| | (C ₄) COLOUR: TO MATCH SILVER METALLIC | | |

THE NEXT GENERATION - ENERGY FROM WASTE FACILITY

EASTERN CREEK, SYDNEY

SOUTH ELEVATION (STAGE 1)

PRELIMINARY

DATE 07.09.2017
SCALE 1:500 @ A1

0 5 10 15 25 37.5 m

DRAWING NO. ISSUE

AR-KTA-1603

3

© krikis tayler architects Pty Ltd
These drawings are subject to copyright and may not be copied, used or reproduced in any way without the express permission of krikis tayler architects Pty Ltd

100mm

200mm

300mm ON ORIGINAL

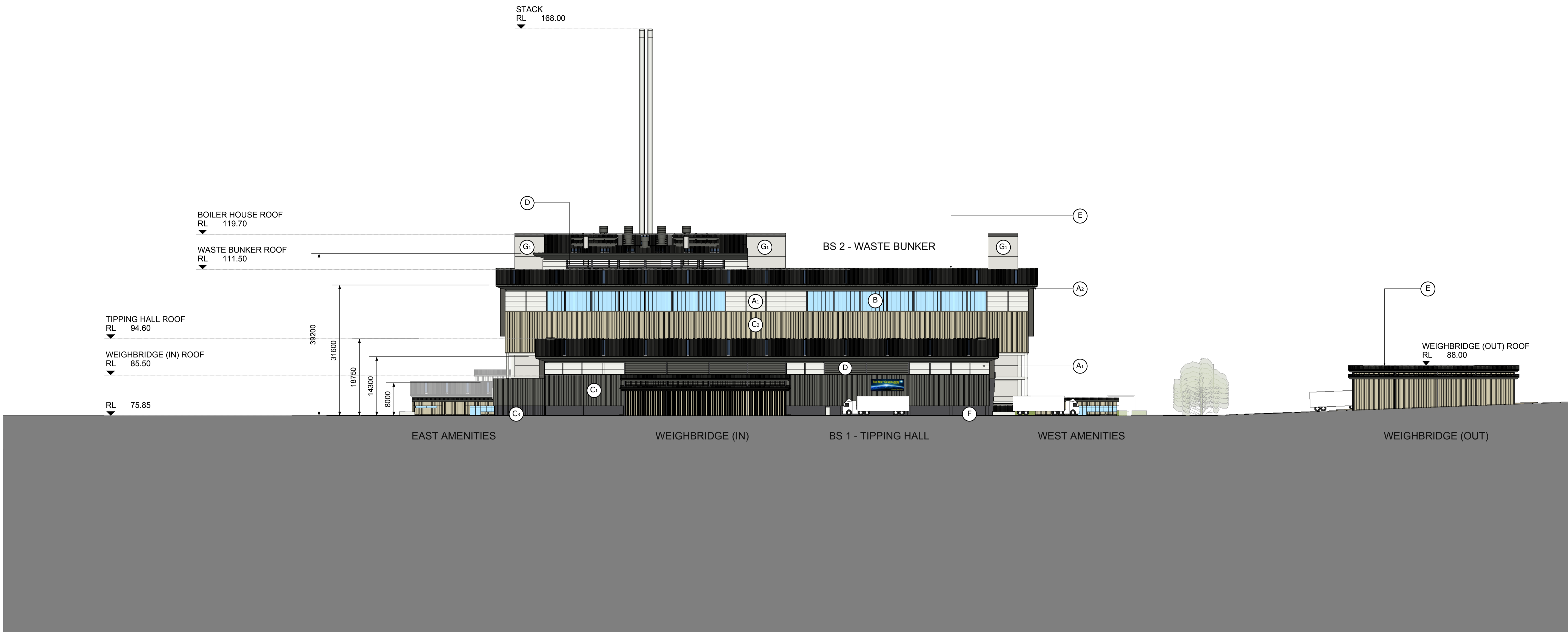
ARCHITECT

a level 7 97 pacific highway
north sydney nsw 2060
m po box 726 north sydney nsw 2059
p +61(0)2 9900 6000 f +61(0)2 9900 6001
w www.krikistayler.com.au



krikis tayler architects

A1



LEGEND

- | | | | |
|---|---|---|--|
| (A ₁) SILVER METALLIC COMPOSITE METAL PANELS - 'ALUCOBOND' OR SIMILAR | (C) VERTICAL PRE-FINISHED PROFILED METAL CLADDING COLORBOND COLOUR; | (D) PRE-FINISHED METAL LOUVRES, SPECIFICATION IN ACCORDANCE WITH MECHANICAL AND ACOUSTIC ENGINEERING CRITERIA, POWDERCOAT FINISH TO MATCH COLORBOND 'WOODLAND GREY' | (F) CONCRETE PUSH-WALL EXTERIOR PAINT FINISH TO MATCH COLORBOND 'MONUMENT' |
| (A ₂) DARK GREY METALLIC SOFFIT LINING, FASCIA AND PROJECTING BLADES - 'ALUCOBOND' OR SIMILAR | (C ₁) COLOUR: 'WOODLAND GREY' | (G ₁) PAINT FINISH TO OFF-FORM CONCRETE CORE - 'KEIM' 'ROYALAN' COLOUR 9590 @30% OR SIMILAR | (G ₂) PAINT FINISH TO OFF-FORM CONCRETE CORE - COLOUR TO MATCH COLORBOND COLOUR : 'COVE' |
| (B) BLUE POLYCARBONATE GLAZING - 'DANPALON DP16' 16mm MULTICELL OR SIMILAR | (C ₂) COLOUR: 'COVE' | (E) PREFINISHED ROOF DECKING ON FOIL-BACKED MINERAL WOOL INSULATION WITH SAFETY MESH SUPPORT - FIELDERS HIKLIP 630 COLOUR: 'WOODLAND GREY' OR SIMILAR | |
| | (C ₃) COLOUR: 'MONUMENT' | | |
| | (C ₄) COLOUR: TO MATCH SILVER METALLIC | | |

THE NEXT GENERATION - ENERGY FROM WASTE FACILITY

EASTERN CREEK, SYDNEY

NORTH ELEVATION (STAGE 1)

PRELIMINARY

DATE 07.09.2017
SCALE 1:500 @ A1

0 5 10 15 25 37.5 m

DRAWING NO. ISSUE

AR-KTA-1604 3

DO NOT SCALE DRAWINGS.
VERIFY ALL DIMENSIONS ON SITE.
REFER ANY DISCREPANCIES TO
THE SUPERINTENDENT BEFORE
PROCEEDING WITH THE WORK.

© krikis tayler architects Pty Ltd
These drawings are subject to copyright and may not be
copied, used or reproduced in any way without the express
permission of krikis tayler architects Pty Ltd



PROPRIETOR

ARCHITECT

a level 7 97 pacific highway
north sydney nsw 2060
m po box 726 north sydney nsw 2059
p +61(0)2 9900 6000 f +61(0)2 9900 6001
w www.krikistayler.com.au



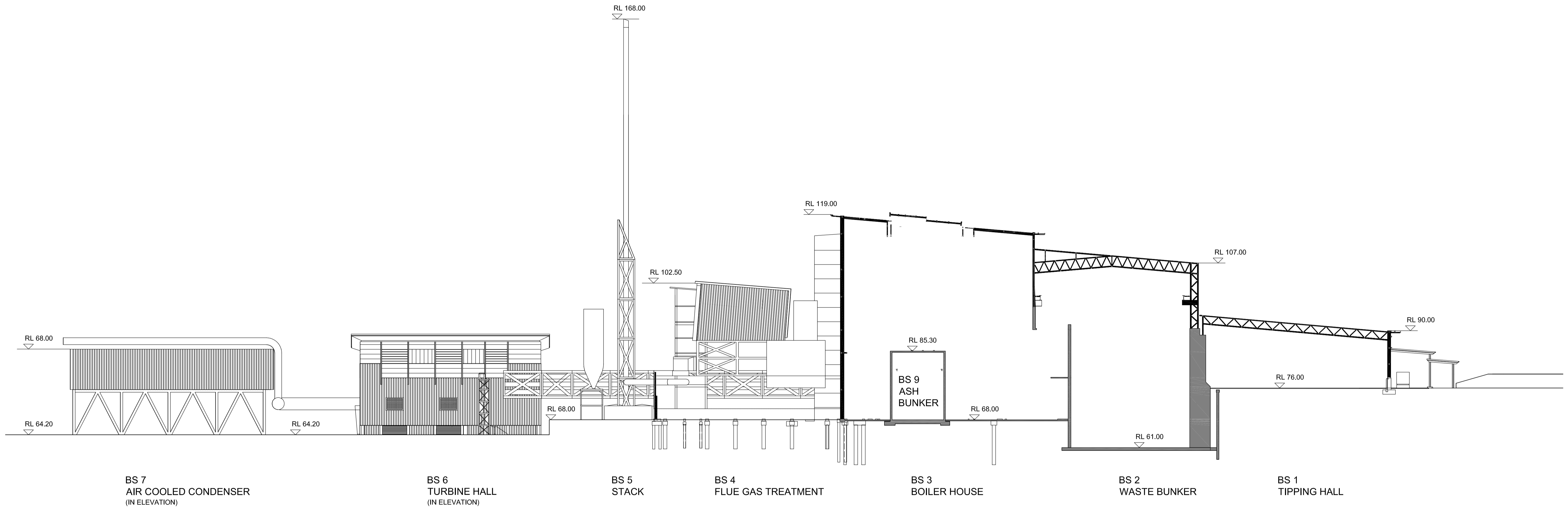
krikis tayler architects

100mm

200mm

300mm ON ORIGINAL

A1



BS 7
AIR COOLED CONDENSER
(IN ELEVATION)

BS 6
TURBINE HALL
(IN ELEVATION)

BS 5
STACK

BS 4
FLUE GAS TREATMENT

BS 3
BOILER HOUSE

BS 9
ASH
BUNKER

BS 2
WASTE BUNKER

BS 1
TIPPING HALL

THE NEXT GENERATION- ENERGY FROM WASTE FACILITY

EASTERN CREEK, SYDNEY

PRELIMINARY

DO NOT SCALE DRAWINGS.
VERIFY ALL DIMENSIONS ON SITE.
REFER ANY DISCREPANCIES TO
THE SUPERINTENDENT BEFORE
PROCEEDING WITH THE WORK.

© **krikis taylor** architects Pty Ltd
These drawings are subject to copyright and may not be copied, used
or reproduced in any way without the express permission of
krikis taylor architects Pty Ltd.



PROPRIETOR

LONG SECTION
(STAGE 1)

ARCHITECT

a level 7 97 pacific highway
north sydney nsw 2060
m po box 720 north sydney nsw 2059
p +61(0)2 9900 6000 f +61(0)2 9900 6001
www.krikistaylor.com.au



DATE 07.09.2017
SCALE 1:500 @ A1

DRAWING NO.
AR-KTA-1611

ISSUE
2

A1

100mm

200mm

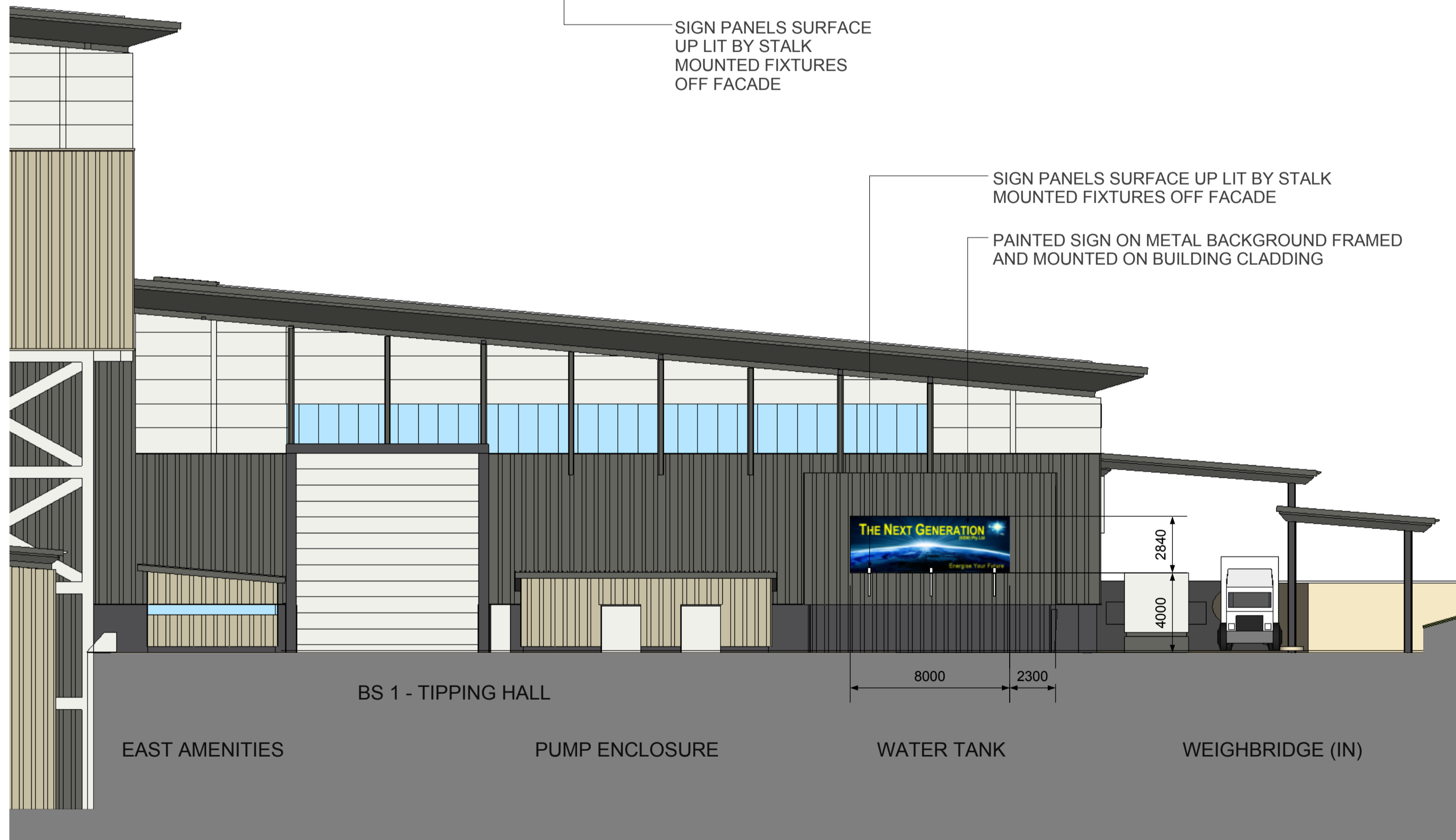
300mm ON ORIGINAL



A NORTH ELEVATION PART
1:200

PAINTED SIGN ON METAL BACKGROUND FRAMED AND MOUNTED ON BUILDING CLADDING

SIGN PANELS SURFACE UP LIT BY STALK MOUNTED FIXTURES OFF FACADE

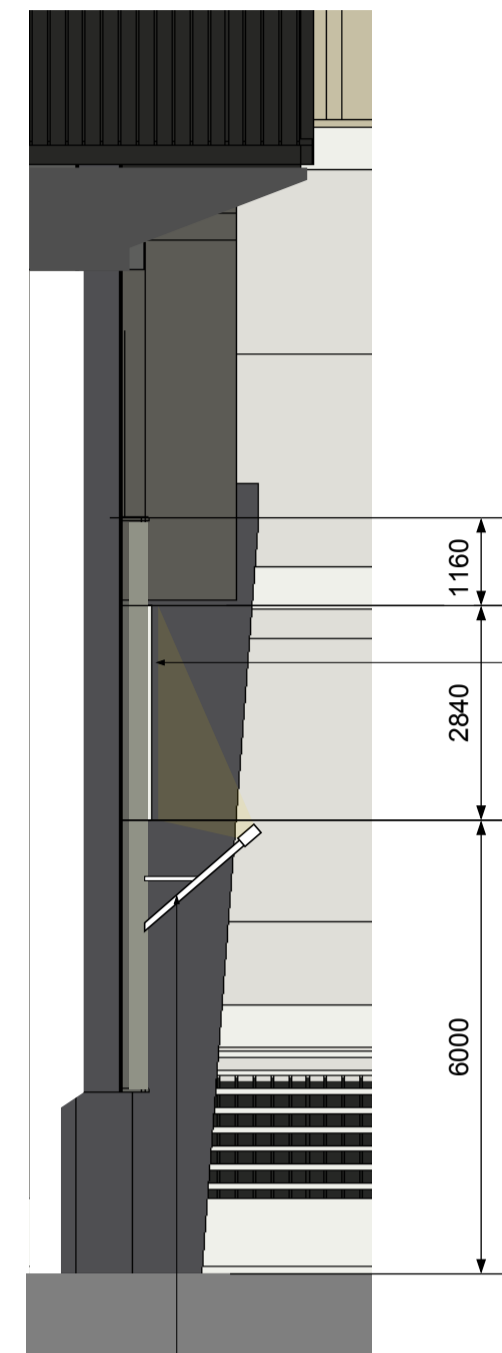


B EAST ELEVATION PART
1:200

SIGN PANELS SURFACE UP LIT BY STALK MOUNTED FIXTURES OFF FACADE

PAINTED SIGN ON METAL BACKGROUND FRAMED AND MOUNTED ON BUILDING CLADDING

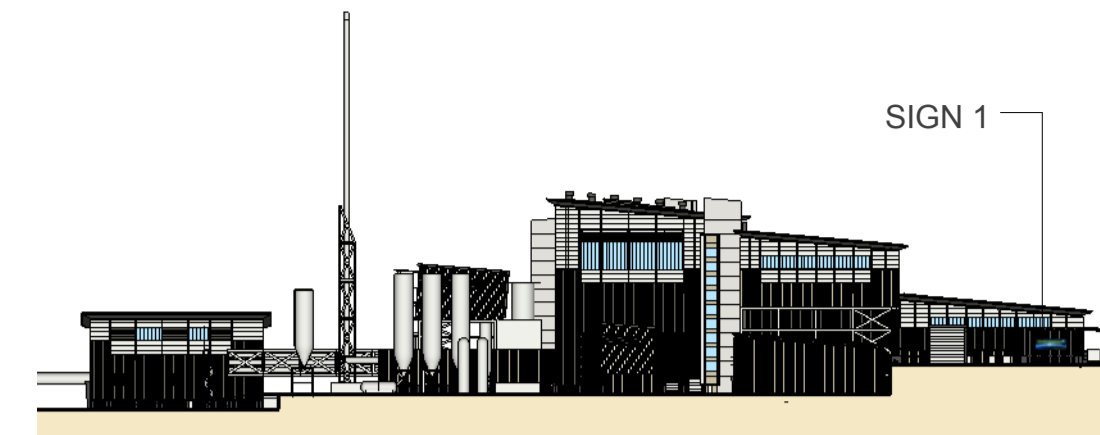
PAINTED SIGN ON METAL BACKGROUND FRAMED AND MOUNTED ON BUILDING CLADDING. PROJECTION FROM BUILDING FACE 100mm MAX



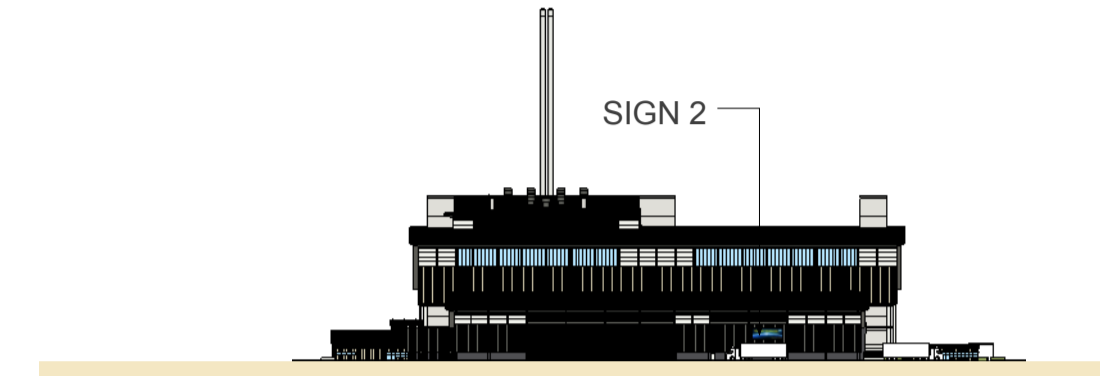
D SECTION
1:100

SIGN PANELS SURFACE UP LIT BY STALK MOUNTED FIXTURES OFF FACADE

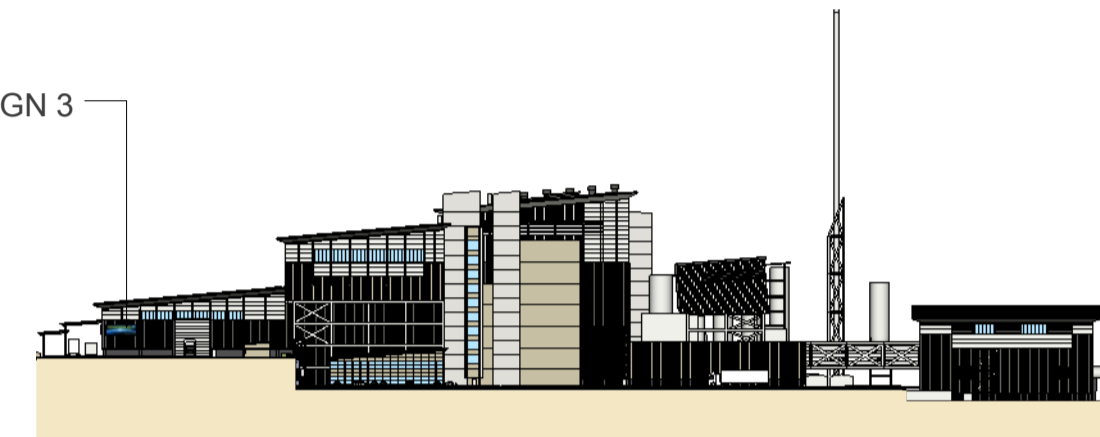
REFERENCE ELEVATIONS :



EAST ELEVATION



NORTH ELEVATION

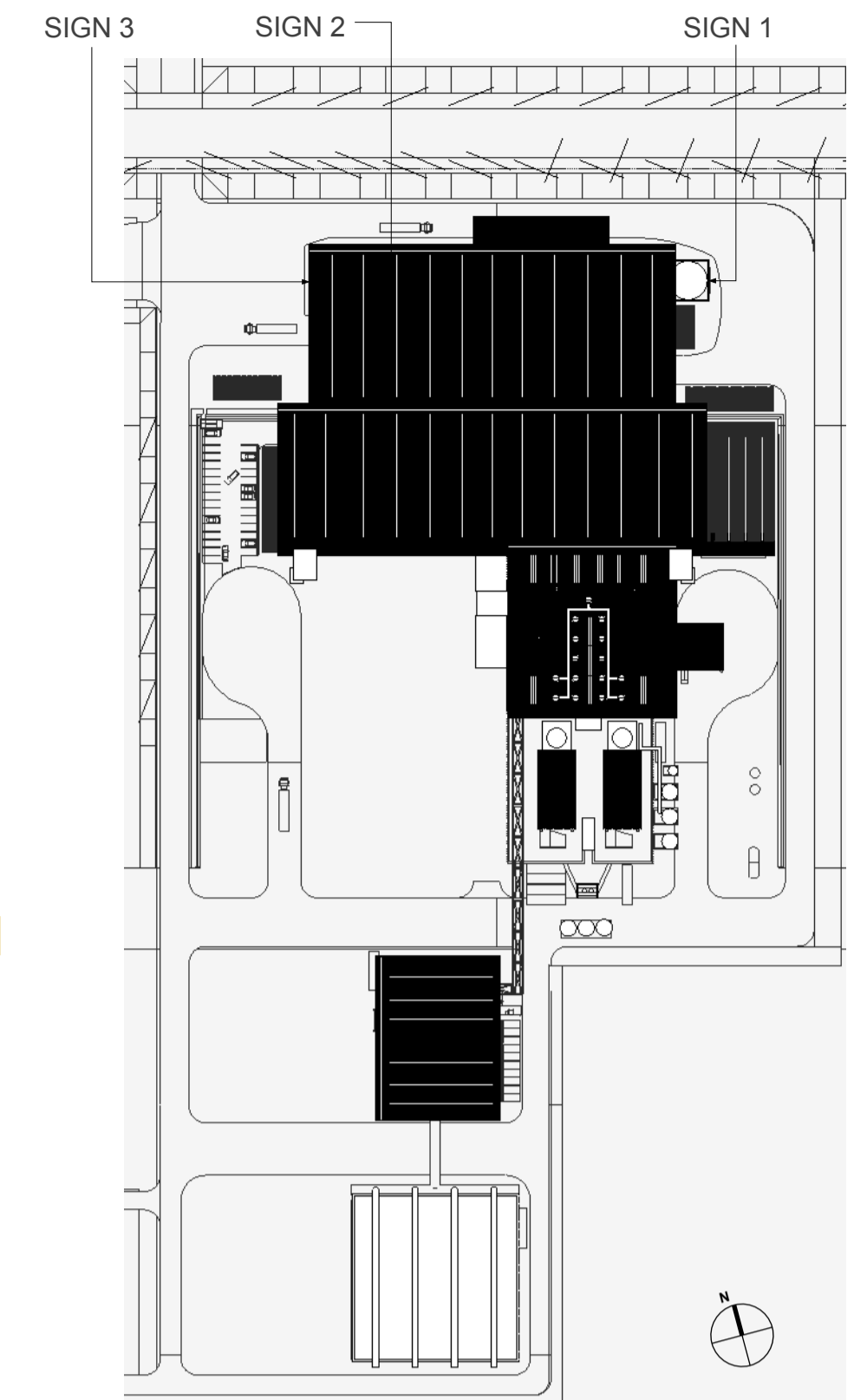


WEST ELEVATION



E SIGN DETAIL
1:100

PAINTED SIGN ON METAL BACKGROUND FRAMED AND MOUNTED ON BUILDING CLADDING. 100mm MAX COLOURED METAL FRAME. SURFACE UP LIT BY STALK MOUNTED FIXTURES OFF FACADE



SIGN LOCATION PLAN



C WEST ELEVATION PART
1:200

PAINTED SIGN ON METAL BACKGROUND FRAMED AND MOUNTED ON BUILDING CLADDING

SIGN PANELS SURFACE UP LIT BY STALK MOUNTED FIXTURES OFF FACADE

THE NEXT GENERATION - ENERGY FROM WASTE FACILITY EASTERN CREEK, SYDNEY

PRELIMINARY

DATE 07.09.2017

DRAWING NO. AR-KTA-1901

ISSUE 3

DO NOT SCALE DRAWINGS. VERIFY ALL DIMENSIONS ON SITE. REFER ANY DISCREPANCIES TO THE SUPERINTENDENT BEFORE PROCEEDING WITH THE WORK.

© krikis tayler architects Pty Ltd
These drawings are subject to copyright and may not be copied, used or reproduced in any way without the express permission of krikis tayler architects Pty Ltd



PROPRIETOR

PROPOSED BUILDING SIGNAGE

ARCHITECT

a level 7 97 pacific highway
north sydney nsw 2060
m po box 726 north sydney nsw 2059
p +61(0)2 9900 6000 f +61(0)2 9900 6001
w www.krikistayler.com.au



krikis tayler architects

100mm

200mm

300mm ON ORIGINAL

A1