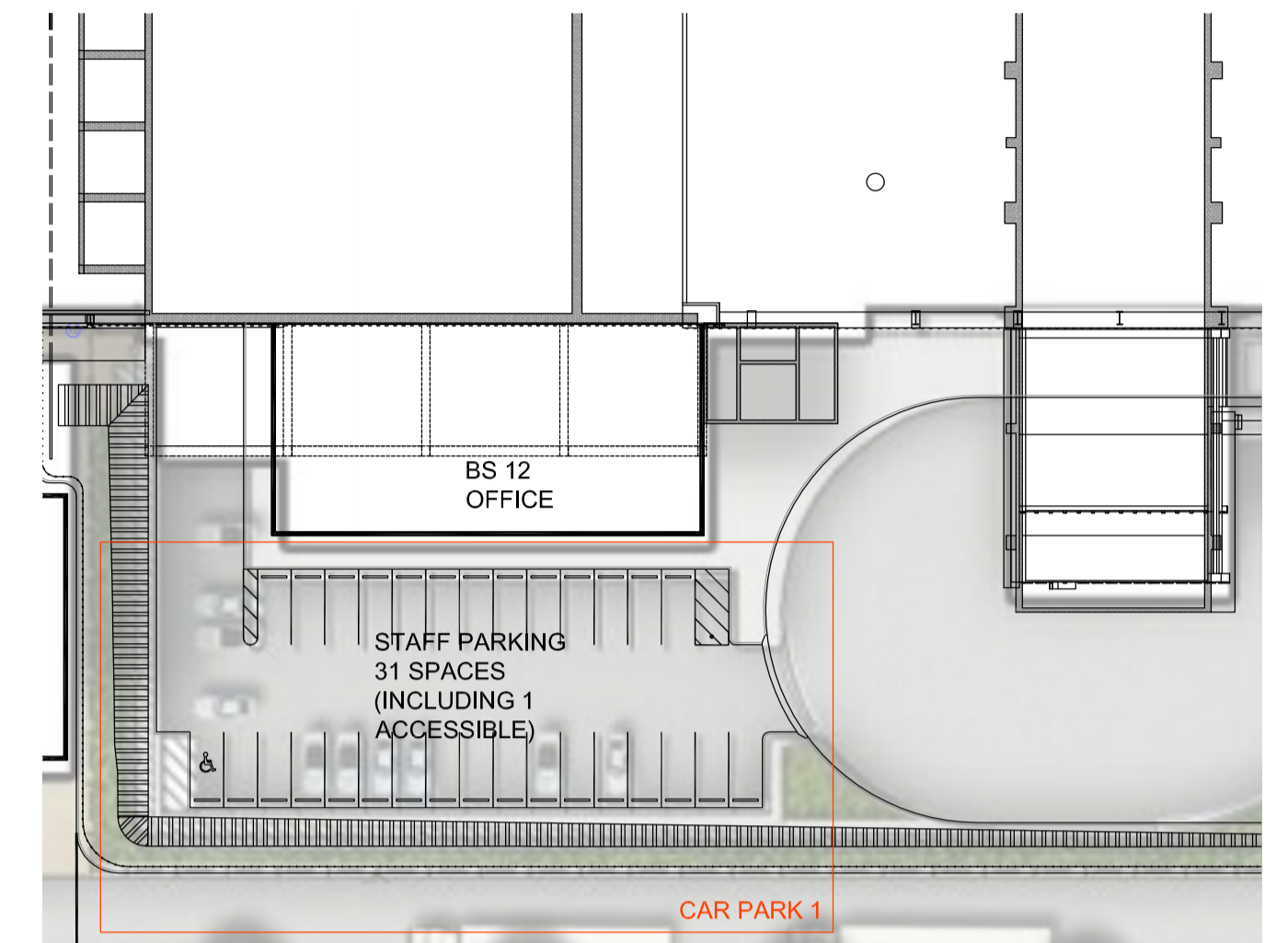
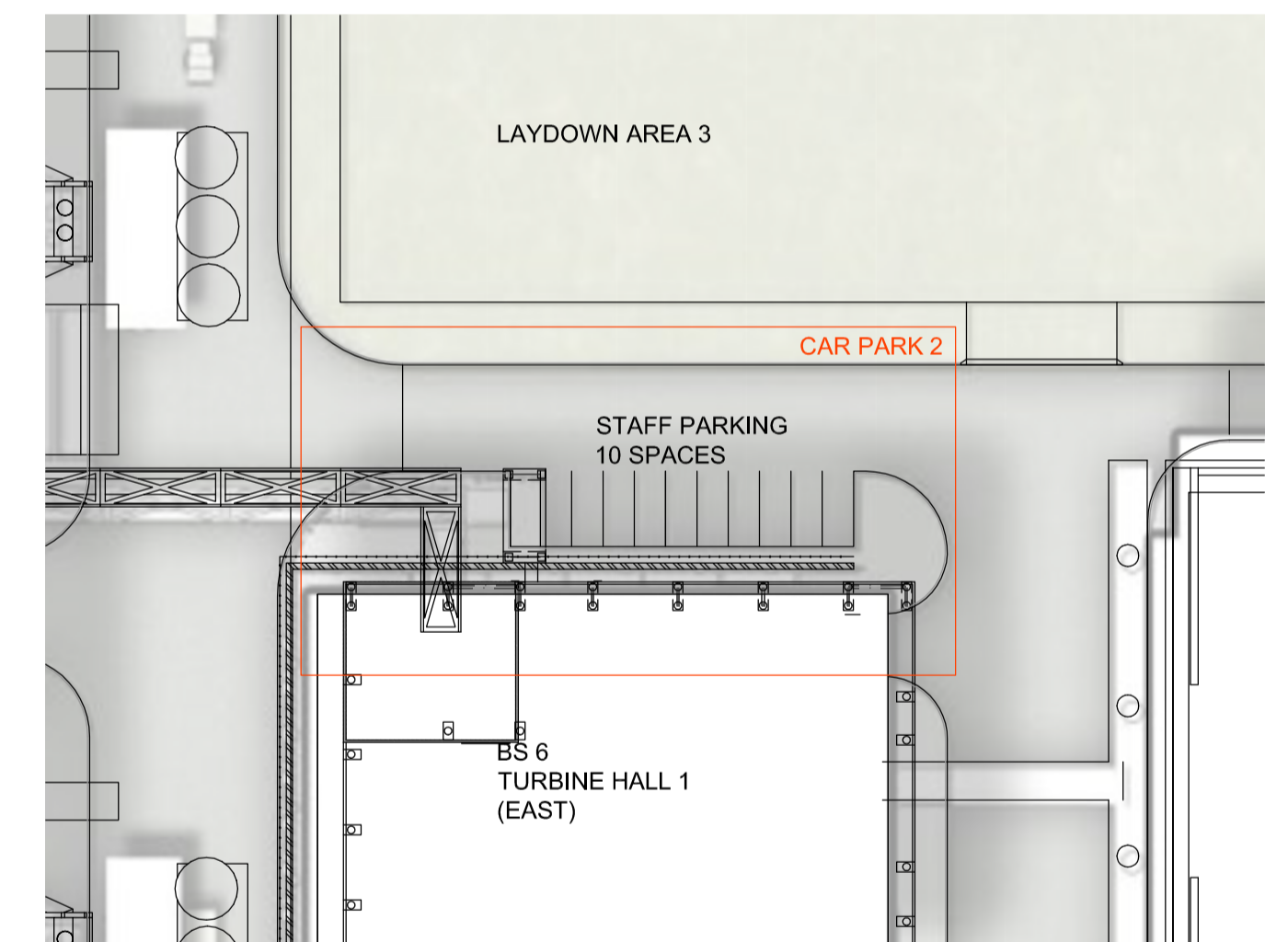


**A** VEHICLE MOVEMENT & TRAFFIC SIGNAGE  
1:1500



**B** CAR PARK 1 DETAILS  
1:500

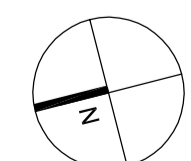


**C** CAR PARK 2 DETAILS  
1:500

- MAINTENANCE VEHICLES
- WASTE DELIVERY VEHICLES
- CHEMICAL DELIVERY & ASH COLLECTION VEHICLES
- ACCESS POINTS

# THE NEXT GENERATION- ENERGY FROM WASTE FACILITY

EASTERN CREEK, SYDNEY



DO NOT SCALE DRAWINGS.  
VERIFY ALL DIMENSIONS ON SITE.  
REFER ANY DISCREPANCIES TO  
THE SUPERINTENDENT BEFORE  
PROCEEDING WITH THE WORK.

© krikis taylor architects Pty Ltd

These drawings are subject to copyright and may not be copied, used  
or reproduced in any way without the express permission of  
krikis taylor architects Pty Ltd.



PROPRIETOR

## VEHICLE MOVEMENT & TRAFFIC SIGNAGE

ARCHITECT

a level 7 97 pacific highway  
north sydney nsw 2060  
m po box 726 north sydney nsw 2059  
p +61(0)2 9900 6000 f +61(0)2 9900 6001  
www.krikistaylor.com.au



krikis taylor architects

PRELIMINARY

DATE 25.03.2015  
SCALE 1:1500 @ A1

0 15 30 45 75 112.5

DRAWING NO.  
**AR-KTA-1002**

ISSUE  
**2**

A1





#### LEGEND

- |   |   |   |  |
|---|---|---|--|
| (A <sub>1</sub> ) SILVER METALLIC COMPOSITE METAL PANELS - 'ALUCOBOND' OR SIMILAR                         | (C) VERTICAL PRE-FINISHED PROFILED METAL CLADDING COLORBOND COLOUR; | (D) PRE-FINISHED METAL LOUVRES. SPECIFICATION IN ACCORDANCE WITH MECHANICAL AND ACOUSTIC ENGINEERING CRITERIA. POWDERCOAT FINISH TO MATCH COLORBOND 'WOODLAND GREY' | (F) CONCRETE PUSH-WALL EXTERIOR PAINT FINISH TO MATCH COLORBOND 'MONUMENT' |
| (A <sub>2</sub> ) DARK GREY METALLIC SOFFIT LINING, FASCIA AND PROJECTING BLADES - 'ALUCOBOND' OR SIMILAR | (C <sub>1</sub> ) COLOUR: 'WOODLAND GREY'                           | (G) PAINT FINISH TO OFF-FORM CONCRETE CORE - 'KEIM' 'ROYALAN' COLOUR 9590 @30% OR SIMILAR   |  |
| (B) BLUE POLYCARBONATE GLAZING - 'DANPALON DP16' 16mm MULTICELL OR SIMILAR                                | (C <sub>2</sub> ) COLOUR: 'COVE'                                    |   |  |
|   | (C <sub>3</sub> ) COLOUR: 'MONUMENT'                                | (E) PREFINISHED ROOF DECKING ON FOIL-BACKED MINERAL WOOL INSULATION WITH SAFETY MESH SUPPORT - FIELDERS HIKLIP 630 COLOUR: 'WOODLAND GREY' OR SIMILAR               |  |
|   | (C <sub>4</sub> ) COLOUR: TO MATCH SILVER METALLIC                  |   |  |

## THE NEXT GENERATION - ENERGY FROM WASTE FACILITY

EASTERN CREEK, SYDNEY

### WEST ELEVATION

#### PRELIMINARY

DATE 25.03.2015  
SCALE 1:500 @ A1

0 5 10 15 25 37.5 m

DRAWING NO. ISSUE

AR-KTA-1601

2

© krikis tayler architects Pty Ltd  
These drawings are subject to copyright and may not be copied, used or reproduced in any way without the express permission of krikis tayler architects Pty Ltd

DO NOT SCALE DRAWINGS.  
VERIFY ALL DIMENSIONS ON SITE.  
REFER ANY DISCREPANCIES TO  
THE SUPERINTENDENT BEFORE  
PROCEEDING WITH THE WORK.



PROPRIETOR

ARCHITECT

a level 7 97 pacific highway  
north sydney nsw 2060  
m po box 726 north sydney nsw 2059  
p +61 (0)2 9900 6000 f +61 (0)2 9900 6001  
w www.krikistayler.com.au



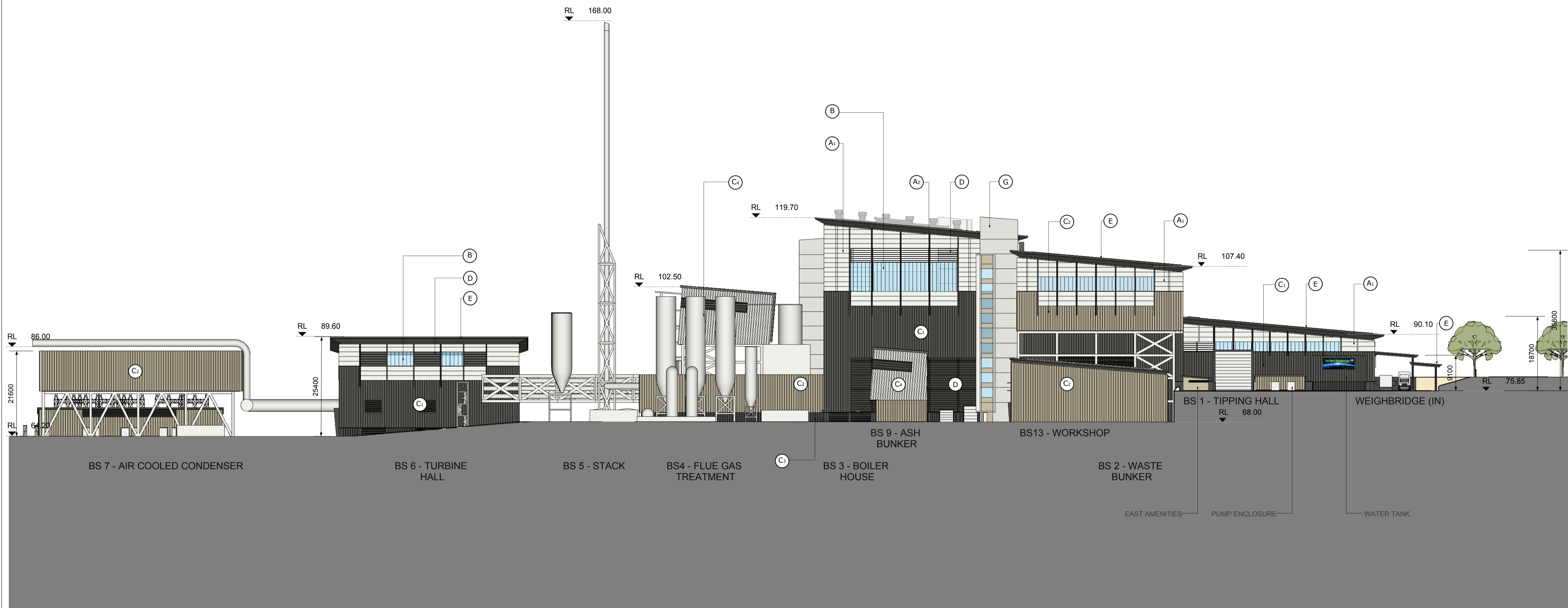
krikis tayler architects

100mm

200mm

300mm ON ORIGINAL

A1



#### LEGEND

- |   |   |   |   |
|---|---|---|---|
| (A <sub>1</sub> ) SILVER METALLIC COMPOSITE METAL PANELS - 'ALUCOBOND' OR SIMILAR                         | (C) VERTICAL PRE-FINISHED PROFILED METAL CLADDING COLORBOND COLOUR; | (D) PRE-FINISHED METAL LOUVRES. SPECIFICATION IN ACCORDANCE WITH MECHANICAL AND ACOUSTIC ENGINEERING CRITERIA. POWDERCOAT FINISH TO MATCH COLORBOND 'WOODLAND GREY' | (F) CONCRETE PUSH-WALL EXTERIOR PAINT FINISH TO MATCH COLORBOND 'MONUMENT'                |
| (A <sub>2</sub> ) DARK GREY METALLIC SOFFIT LINING, FASCIA AND PROJECTING BLADES - 'ALUCOBOND' OR SIMILAR | (C <sub>1</sub> ) COLOUR: 'WOODLAND GREY'                           | (E) PREFINISHED ROOF DECKING ON FOIL-BACKED MINERAL WOOL INSULATION WITH SAFETY MESH SUPPORT - FIELDERS HIKLIP 630 COLOUR: 'WOODLAND GREY' OR SIMILAR               | (G) PAINT FINISH TO OFF-FORM CONCRETE CORE - 'KEIM' 'ROYALAN' COLOUR 9590 @30% OR SIMILAR |
| (B) BLUE POLYCARBONATE GLAZING - 'DANPALON DP16' 16mm MULTICELL OR SIMILAR                                | (C <sub>2</sub> ) COLOUR: 'COVE'                                    |   |   |
|   | (C <sub>3</sub> ) COLOUR: 'MONUMENT'                                |   |   |
|   | (C <sub>4</sub> ) COLOUR: TO MATCH SILVER METALLIC                  |   |   |

## THE NEXT GENERATION - ENERGY FROM WASTE FACILITY

EASTERN CREEK, SYDNEY

### EAST ELEVATION

#### PRELIMINARY

DATE 25.03.2015  
SCALE 1:500 @ A1

0 5 10 15 25 37.5 m

DRAWING NO. ISSUE

AR-KTA-1602

2

© krikis tayler architects Pty Ltd  
These drawings are subject to copyright and may not be copied, used or reproduced in any way without the express permission of krikis tayler architects Pty Ltd

DO NOT SCALE DRAWINGS.  
VERIFY ALL DIMENSIONS ON SITE.  
REFER ANY DISCREPANCIES TO  
THE SUPERINTENDENT BEFORE  
PROCEEDING WITH THE WORK.



PROPRIETOR

ARCHITECT

a level 7 97 pacific highway  
north sydney nsw 2060  
m po box 726 north sydney nsw 2059  
p +61(0)2 9900 6000 f +61(0)2 9900 6001  
w www.krikistayler.com.au



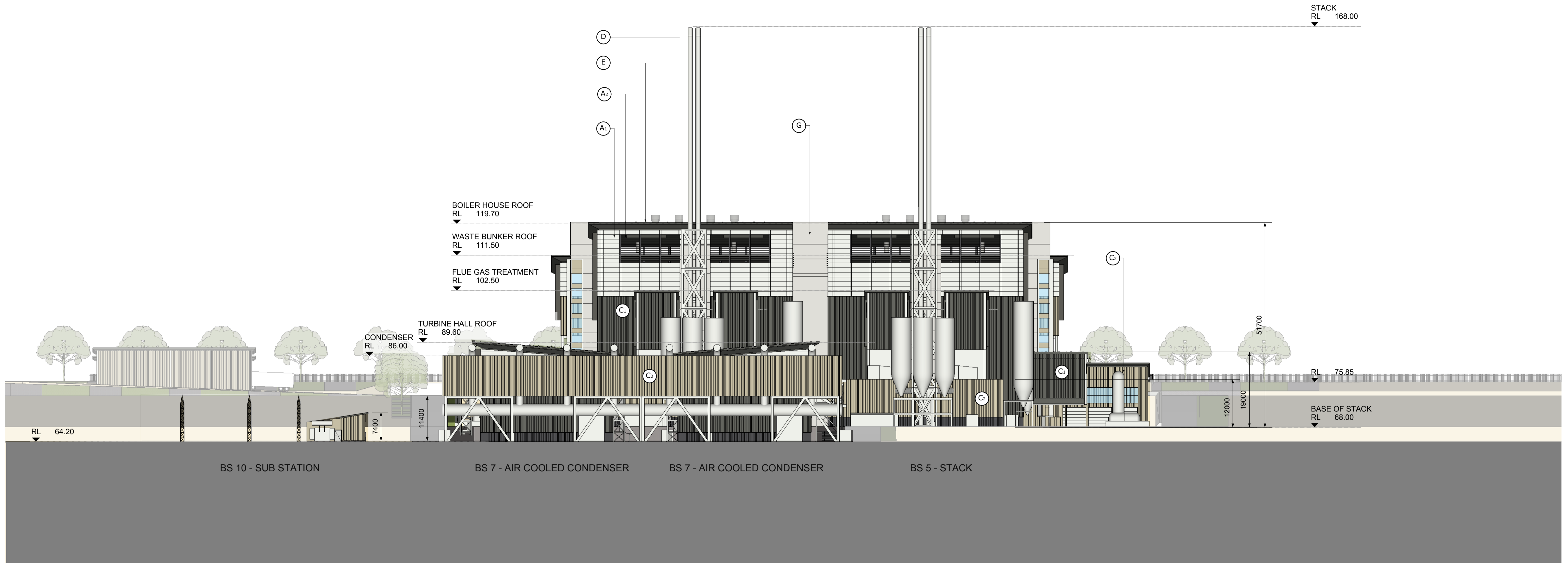
krikis tayler architects

100mm

200mm

300mm ON ORIGINAL

A1



#### LEGEND

- |   |   |   |   |
|---|---|---|---|
| (A <sub>1</sub> ) SILVER METALLIC COMPOSITE METAL PANELS - 'ALUCOBOND' OR SIMILAR                         | (C) VERTICAL PRE-FINISHED PROFILED METAL CLADDING COLORBOND COLOUR; | (D) PRE-FINISHED METAL LOUVRES. SPECIFICATION IN ACCORDANCE WITH MECHANICAL AND ACOUSTIC ENGINEERING CRITERIA. POWDERCOAT FINISH TO MATCH COLORBOND 'WOODLAND GREY' | (F) CONCRETE PUSH-WALL EXTERIOR PAINT FINISH TO MATCH COLORBOND 'MONUMENT'                |
| (A <sub>2</sub> ) DARK GREY METALLIC SOFFIT LINING, FASCIA AND PROJECTING BLADES - 'ALUCOBOND' OR SIMILAR | (C <sub>1</sub> ) COLOUR: 'WOODLAND GREY'                           | (E) PREFINISHED ROOF DECKING ON FOIL-BACKED MINERAL WOOL INSULATION WITH SAFETY MESH SUPPORT - FIELDSERS HIKLIP 630 COLOUR: 'WOODLAND GREY' OR SIMILAR              | (G) PAINT FINISH TO OFF-FORM CONCRETE CORE - 'KEIM' 'ROYALAN' COLOUR 9590 @30% OR SIMILAR |
| (B) BLUE POLYCARBONATE GLAZING - 'DANPALON DP16' 16mm MULTICELL OR SIMILAR                                | (C <sub>2</sub> ) COLOUR: 'COVE'                                    |   |   |
|   | (C <sub>3</sub> ) COLOUR: 'MONUMENT'                                |   |   |
|   | (C <sub>4</sub> ) COLOUR: TO MATCH SILVER METALLIC                  |   |   |

## THE NEXT GENERATION - ENERGY FROM WASTE FACILITY

EASTERN CREEK, SYDNEY

### SOUTH ELEVATION

#### PRELIMINARY

DATE 25.03.2015  
SCALE 1:500 @ A1

0 5 10 15 25 37.5 m

DRAWING NO. ISSUE

AR-KTA-1603

2

© krikis tayler architects Pty Ltd  
These drawings are subject to copyright and may not be copied, used or reproduced in any way without the express permission of krikis tayler architects Pty Ltd

DO NOT SCALE DRAWINGS.  
VERIFY ALL DIMENSIONS ON SITE.  
REFER ANY DISCREPANCIES TO  
THE SUPERINTENDENT BEFORE  
PROCEEDING WITH THE WORK.



PROPRIETOR

ARCHITECT

a level 7 97 pacific highway  
north sydney nsw 2060  
m po box 726 north sydney nsw 2059  
p +61 (0)2 9900 6000 f +61 (0)2 9900 6001  
w www.krikistayler.com.au



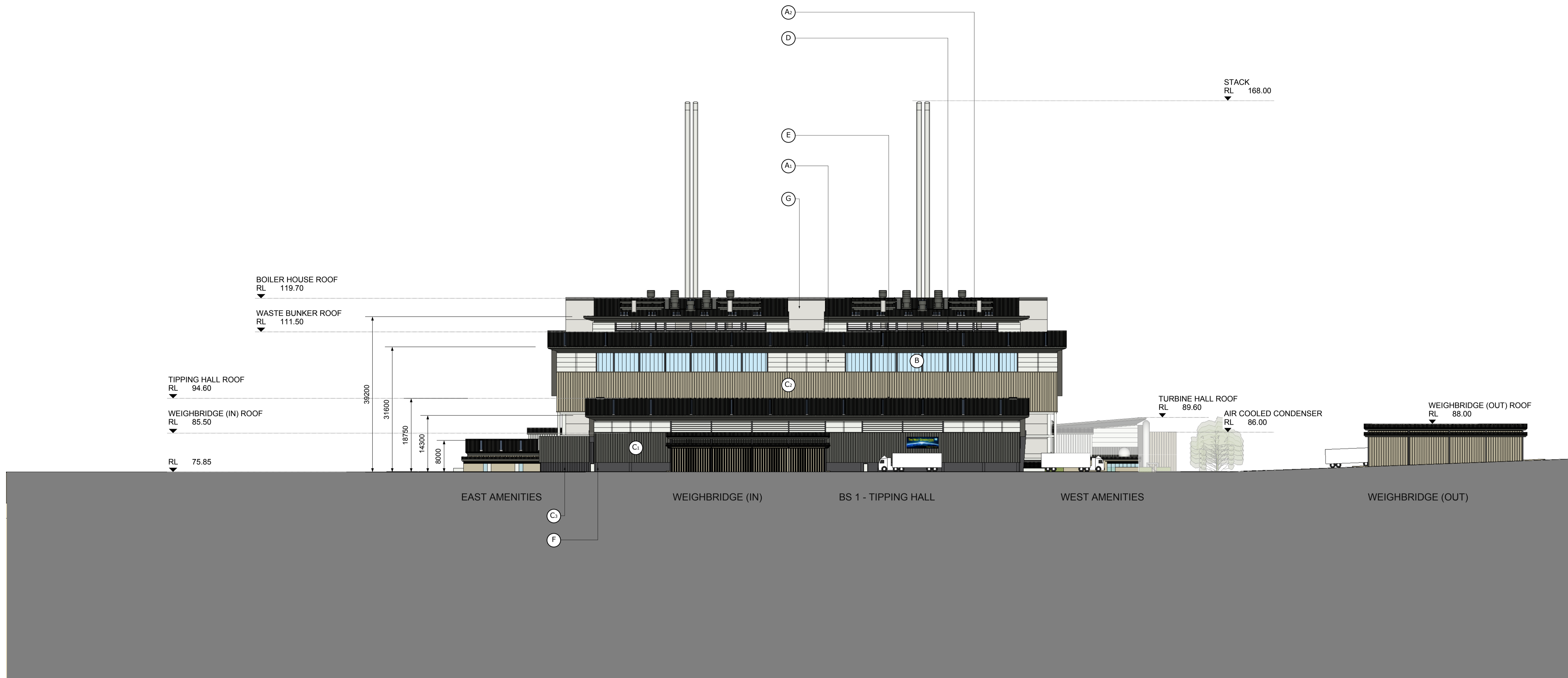
krikis tayler architects

100mm

200mm

300mm ON ORIGINAL

A1



#### LEGEND

- |   |   |   |  |
|---|---|---|--|
| (A <sub>1</sub> ) SILVER METALLIC COMPOSITE METAL PANELS - 'ALUCOBOND' OR SIMILAR                         | (C) VERTICAL PRE-FINISHED PROFILED METAL CLADDING COLORBOND COLOUR; | (D) PRE-FINISHED METAL LOUVRES. SPECIFICATION IN ACCORDANCE WITH MECHANICAL AND ACOUSTIC ENGINEERING CRITERIA. POWDERCOAT FINISH TO MATCH COLORBOND 'WOODLAND GREY' | (F) CONCRETE PUSH-WALL EXTERIOR PAINT FINISH TO MATCH COLORBOND 'MONUMENT' |
| (A <sub>2</sub> ) DARK GREY METALLIC SOFFIT LINING, FASCIA AND PROJECTING BLADES - 'ALUCOBOND' OR SIMILAR | (C <sub>1</sub> ) COLOUR: 'WOODLAND GREY'                           | (G) PAINT FINISH TO OFF-FORM CONCRETE CORE - 'KEIM' 'ROYALAN' COLOUR 9590 @30% OR SIMILAR   |  |
| (B) BLUE POLYCARBONATE GLAZING - 'DANPALON DP16' 16mm MULTICELL OR SIMILAR                                | (C <sub>2</sub> ) COLOUR: 'COVE'                                    |   |  |
|   | (C <sub>3</sub> ) COLOUR: 'MONUMENT'                                | (E) PREFINISHED ROOF DECKING ON FOIL-BACKED MINERAL WOOL INSULATION WITH SAFETY MESH SUPPORT - FIELDSERS HIKLIP 630 COLOUR: 'WOODLAND GREY' OR SIMILAR              |  |
|   | (C <sub>4</sub> ) COLOUR: TO MATCH SILVER METALLIC                  |   |  |

## THE NEXT GENERATION - ENERGY FROM WASTE FACILITY

EASTERN CREEK, SYDNEY

### NORTH ELEVATION

#### PRELIMINARY

DATE 25.03.2015  
SCALE 1:500 @ A1

0 5 10 15 25 37.5 m

DRAWING NO. ISSUE

AR-KTA-1604

2

© krikis tayler architects Pty Ltd  
These drawings are subject to copyright and may not be copied, used or reproduced in any way without the express permission of krikis tayler architects Pty Ltd



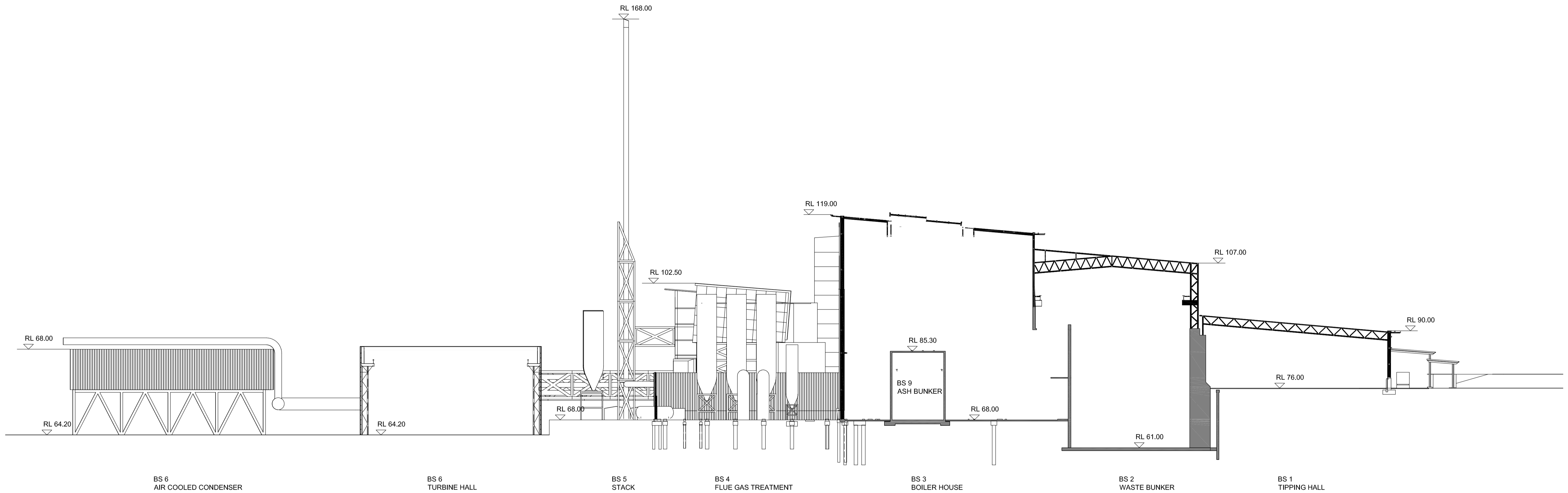
PROPRIETOR

ARCHITECT

a level 7 97 pacific highway  
north sydney nsw 2060  
m po box 726 north sydney nsw 2059  
p +61(0)2 9900 6000 f +61(0)2 9900 6001  
w www.krikistayler.com.au



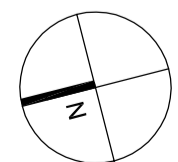
krikis tayler architects



# THE NEXT GENERATION- ENERGY FROM WASTE FACILITY

EASTERN CREEK, SYDNEY

PRELIMINARY



DO NOT SCALE DRAWINGS.  
VERIFY ALL DIMENSIONS ON SITE.  
REFER ANY DISCREPANCIES TO  
THE SUPERINTENDENT BEFORE  
PROCEEDING WITH THE WORK.

© **krikis taylor** architects Pty Ltd  
These drawings are subject to copyright and may not be copied, used  
or reproduced in any way without the express permission of  
**krikis taylor** architects Pty Ltd.

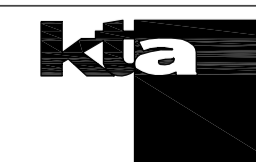


PROPRIETOR

LONG SECTION

ARCHITECT

a level 7 97 pacific highway  
north sydney nsw 2060  
m po box 720 north sydney nsw 2059  
p +61(0)2 9900 6000 f +61(0)2 9900 6001  
www.krikistaylor.com.au



krikis taylor architects

DATE 16.03.2015  
SCALE 1:500 @ A1

0 5 10 15 25 37.5

DRAWING NO.

AR-KTA-1611

ISSUE

1

A1