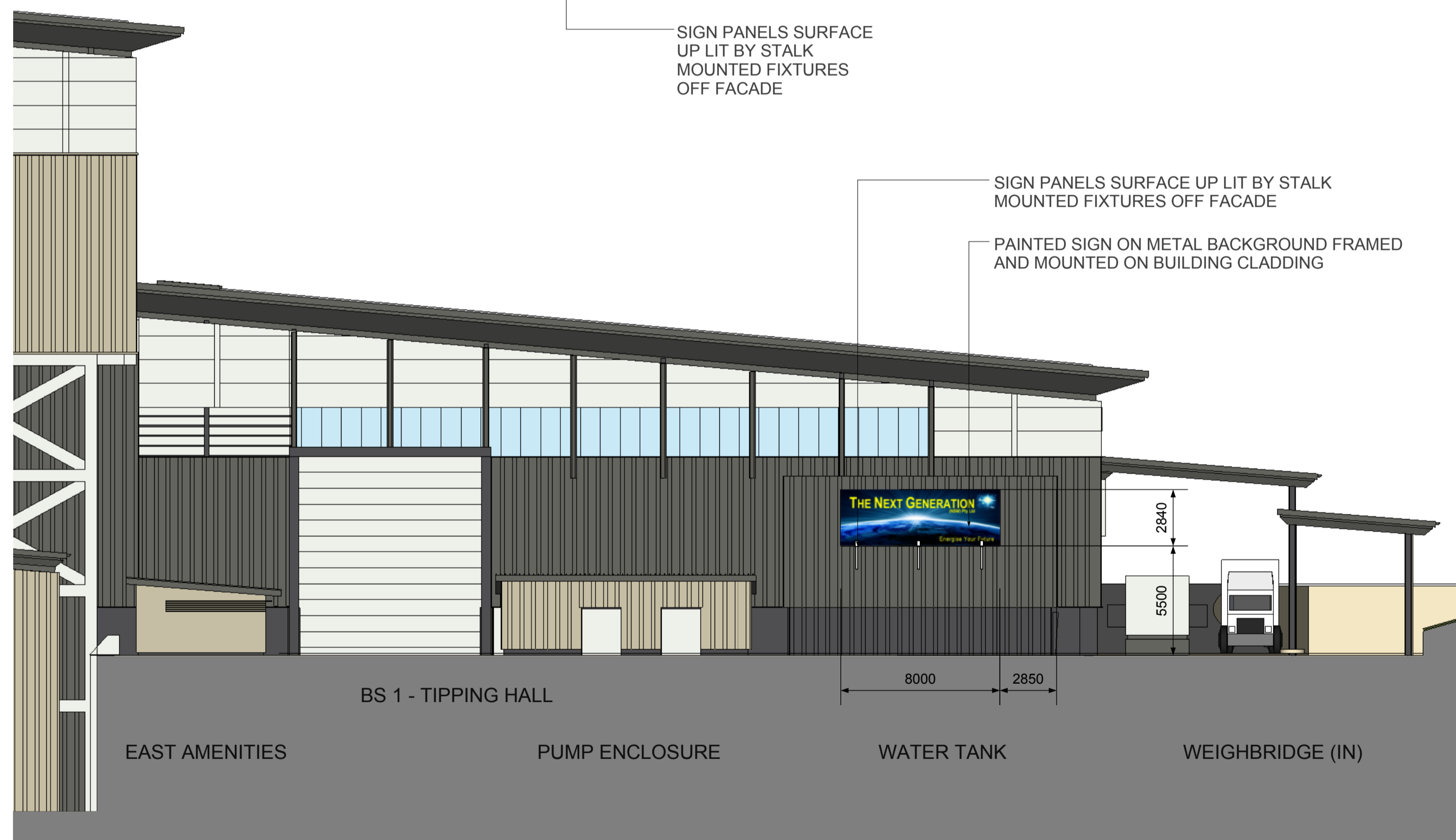


**A** NORTH ELEVATION PART  
1:200

PAINTED SIGN ON METAL BACKGROUND FRAMED AND MOUNTED ON BUILDING CLADDING

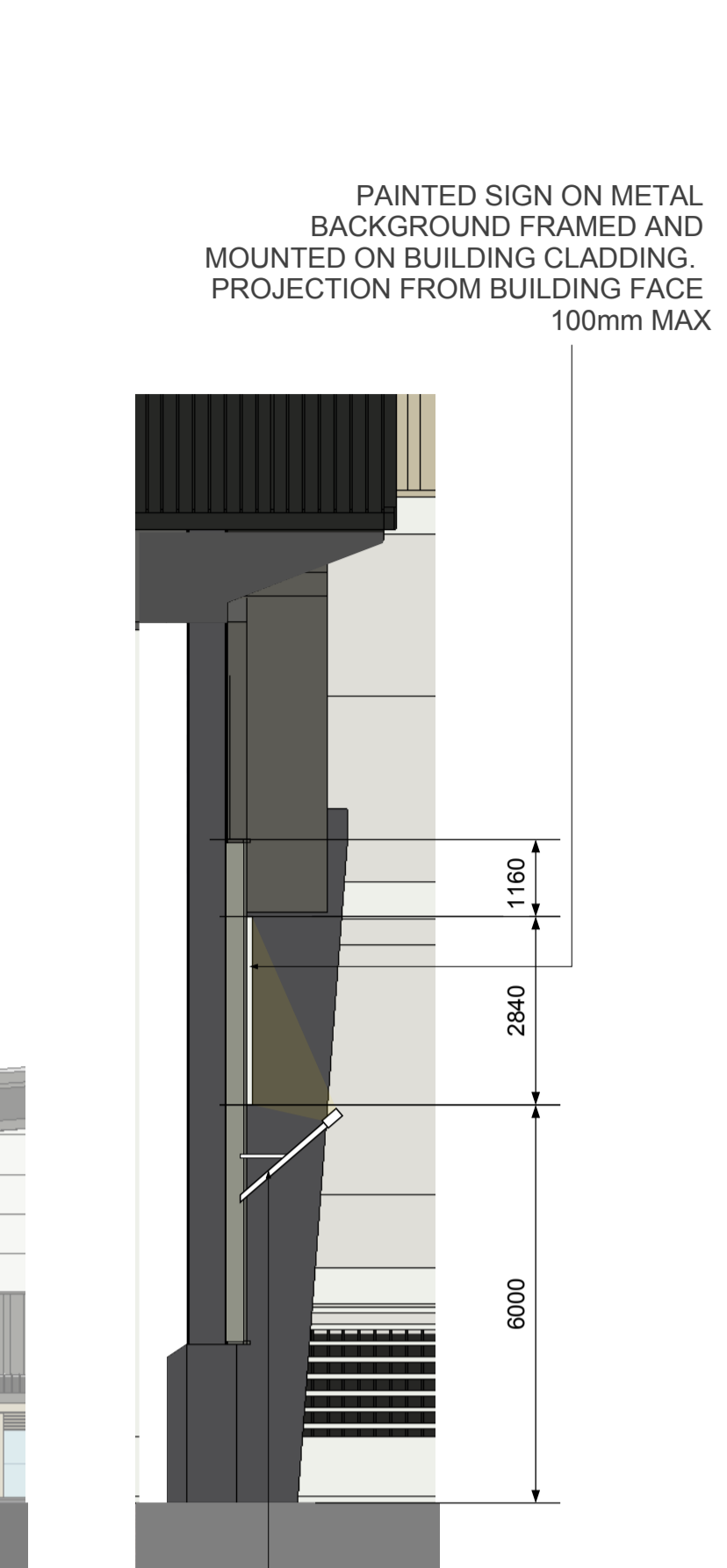
SIGN PANELS SURFACE UP LIT BY STALK MOUNTED FIXTURES OFF FACADE



**B** EAST ELEVATION PART  
1:200

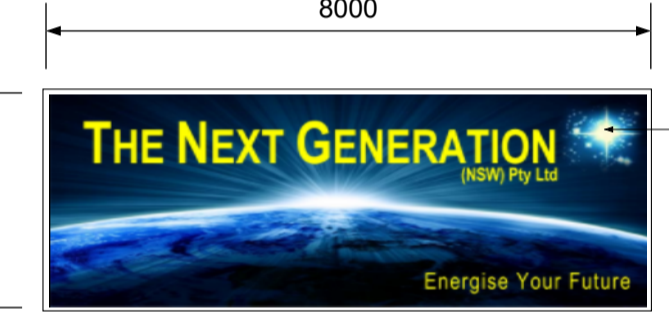
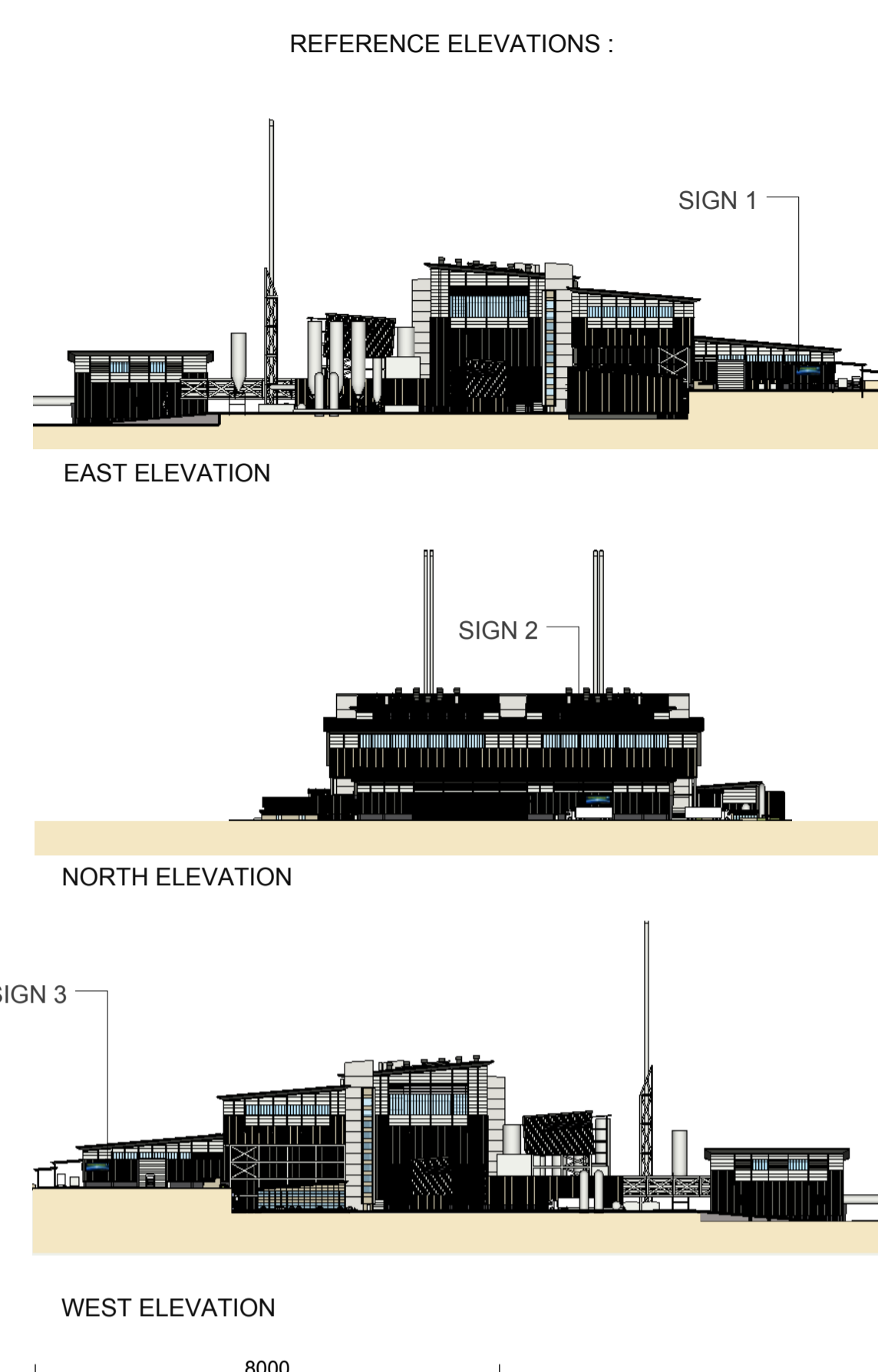
SIGN PANELS SURFACE UP LIT BY STALK MOUNTED FIXTURES OFF FACADE

PAINTED SIGN ON METAL BACKGROUND FRAMED AND MOUNTED ON BUILDING CLADDING



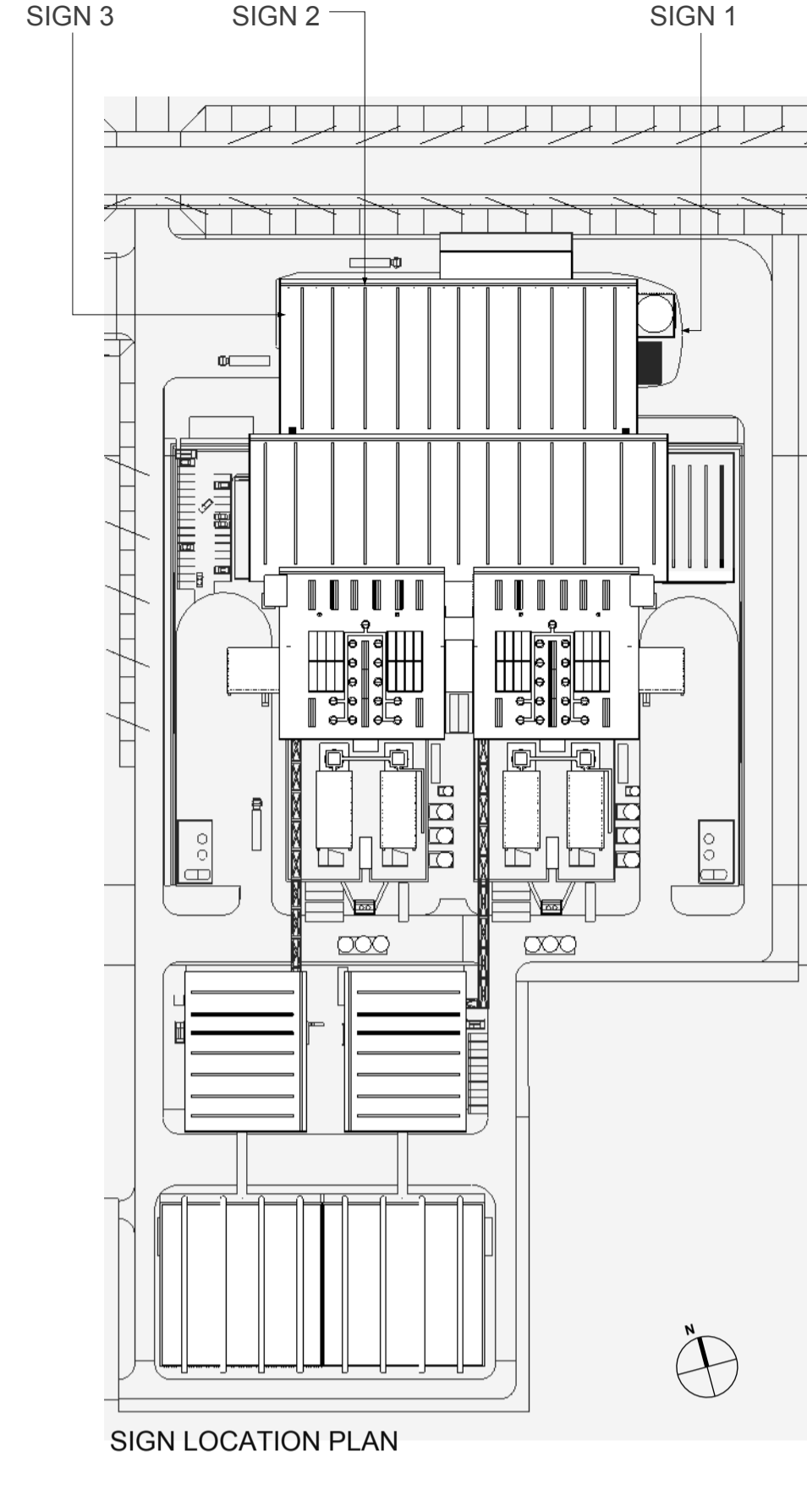
**D** SECTION  
1:100

SIGN PANELS SURFACE UP LIT BY STALK MOUNTED FIXTURES OFF FACADE



**E** SIGN DETAIL  
1:100

PAINTED SIGN ON METAL BACKGROUND FRAMED AND MOUNTED ON BUILDING CLADDING. 100mm MAX COLOURED METAL FRAME. SURFACE UP LIT BY STALK MOUNTED FIXTURES OFF FACADE



SIGN LOCATION PLAN



**C** WEST ELEVATION PART  
1:200

PAINTED SIGN ON METAL BACKGROUND FRAMED AND MOUNTED ON BUILDING CLADDING

SIGN PANELS SURFACE UP LIT BY STALK MOUNTED FIXTURES OFF FACADE

**THE NEXT GENERATION - ENERGY FROM WASTE FACILITY**  
EASTERN CREEK, SYDNEY

**PRELIMINARY**

DATE 25.03.2015

DO NOT SCALE DRAWINGS. VERIFY ALL DIMENSIONS ON SITE. REFER ANY DISCREPANCIES TO THE SUPERINTENDENT BEFORE PROCEEDING WITH THE WORK.

© krikis taylor architects Pty Ltd  
These drawings are subject to copyright and may not be copied, used or reproduced in any way without the express permission of krikis taylor architects Pty Ltd



**PROPOSED BUILDING SIGNAGE**

ARCHITECT

a level 7 97 pacific highway  
north sydney nsw 2060  
po box 726 north sydney nsw 2059  
p +61(0)2 9900 6000 f +61(0)2 9900 6001  
w www.krikistaylor.com.au



DRAWING NO.  
**AR-KTA-1901**

ISSUE  
**2**

100mm

200mm

300mm ON ORIGINAL