

Quarry Ck basin

Additional Area for EFW site (approx)

Area managed by Basin RC 1.1

BCC AD Section Comments
23 Sep 2015

PREPARED BY:

1	AUG/12	FIRST DRAFT		
REV	DATE	DESCRIPTION	CHECKED	APPROVED

PUBLIC UTILITIES LEGEND

WATER MAINS	—W—	GAS	—G—	TELSTRA	—T—
HYDRANT	▲	GAS VALVE	■	TELSTRA PIT	■
STOP VALVE	▲	ELECTRICITY	—E—	TELSTRA PILLAR	■
WATER METER	M	ELECTRICITY PIT	■	TELSTRA POLE	●
WATER TAP	○	POWER POLE	○	STORM WATER	—SW—
SEWER	—S—	POWER LIGHT POLE	○	SW MANHOLE	⊗
SEWER LAMPHOLE	○	LIGHT POLE	○		
SEWER MANHOLE	⊗	STAY POLE	○		

DATUM

SURVEYED	ALS 2010
DESIGNED	GT
CADD	GT
VERIFIED	
DATE	

APPROVED

MANAGER ASSET DESIGN SERVICES

CLIENT

DATE

Blacktown City Council

COUNCIL CHAMBERS 62 FLUSHCOMBE ROAD, BLACKTOWN
ALL MAIL: GENERAL MANAGER PO BOX 63, BLACKTOWN NSW 2148
TELEPHONE: (02) 9839 6000 FAX: (02) 9831 1961
DX: 8117 BLACKTOWN

PLAN
LONG SECTION: HORIZ
VERT
CROSS SECTIONS

SCALE: 1:5000 @ A1

PROJECT TITLE: SEPP 59 CP18 REVIEW, POST DEVELOPMENT RAFTS CATCHMENTS

SHEET TITLE:

CAD FILE: FILE No: PLAN No:

ISO 9001 International Standards Certification

Lic No. QAC/R61/0103

ASSET DESIGN SERVICES

SHEET 1 OF 2 SHEETS REV

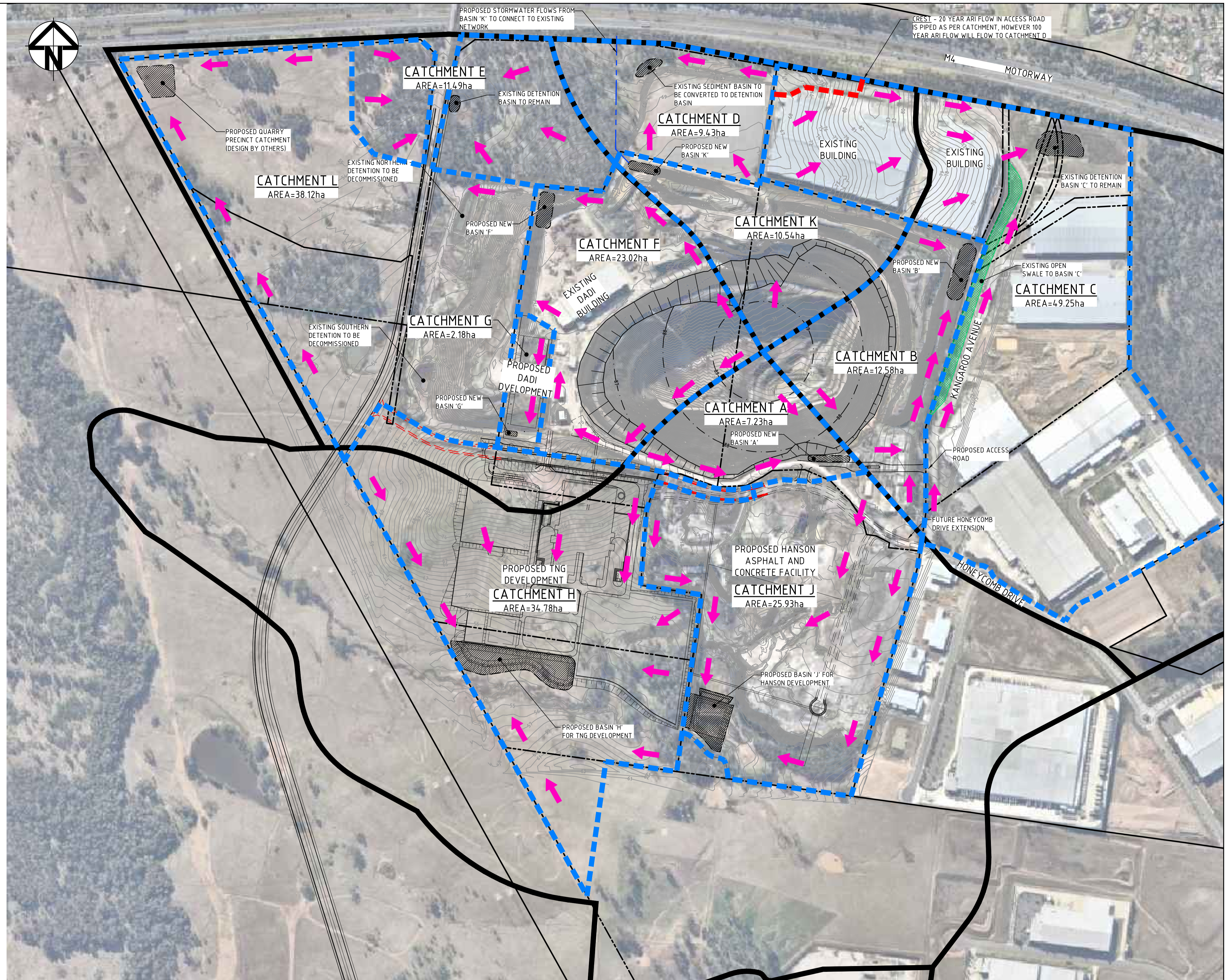
APPENDIX C

Proposed Future Stormwater Management Plan SKC007 Rev P5

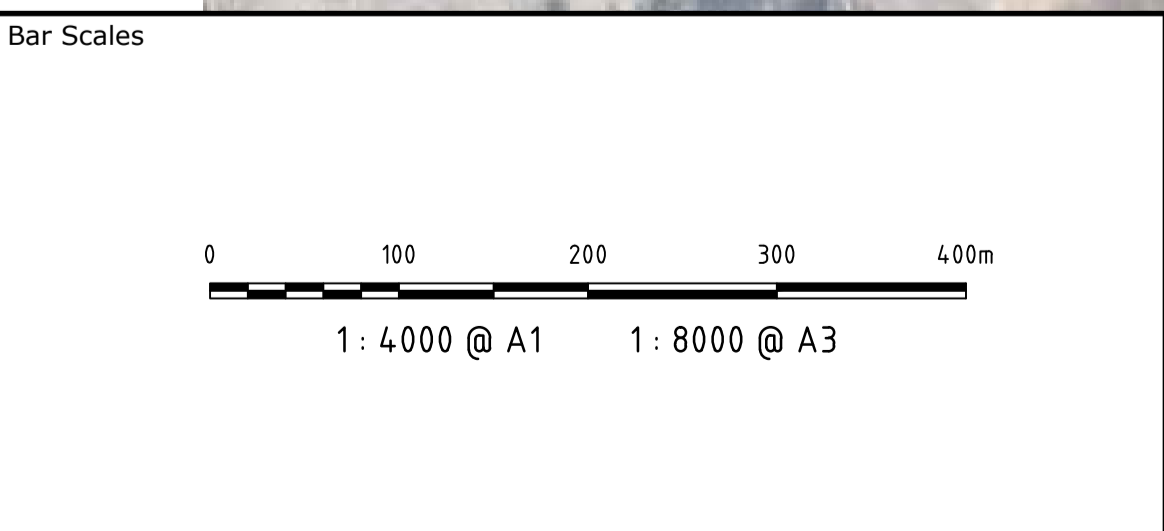
CATCHMENT	AREA	VOLUME REQUIRED FOR OSD	SURFACE AREA REQUIRED FOR BIO-RETENTION
A	7.23ha	2,510m ³	730m ²
B	12.58ha	4,300m ³	1,320m ²
C	4.925ha	-	-
D	9.43ha	3,300m ³	950m ²
E	11.49ha	-	-
F	23.02ha	8,300m ³	2,400m ²
G	2.18ha	760m ³	220m ²
H	34.78ha	12,080m ³	3,510m ²
J	25.93ha	UNKNOWN	UNKNOWN
K	10.54ha	3,600m ³	1,070m ²
L	38.12ha	13,250m ³	3,840m ²

NOTE:

- SIZE OF OSD/BIO-RETENTION BASINS BASED ON ASSUMPTION THAT CATCHMENT WILL BE 80% IMPERVIOUS AREA.
- CALCULATIONS AS PER BLACKTOWN CITY COUNCIL SEPP No.59.
- WSUD TARGET REDUCTION REQUIREMENTS:
 - 85% TOTAL SUSPENDED SOLIDS (TSS)
 - 65% TOTAL PHOSPHORUS (TP)
 - 45% TOTAL NITROGEN (TN)
 - 90% TOTAL HYDROCARBONS
 - 90% GROSS POLLUTANTS
- CATCHMENTS 'C' AND 'E' WILL NOT BE ALTERED. EXISTING BASINS ARE ASSUMED SUFFICIENT.
- CATCHMENT 'J' IS ASSUMED TO DRAIN TO BASIN 'J' AND HAS BEEN ASSIGNED ACCORDINGLY.



Issue	Description	Date
P5	ISSUED FOR INFORMATION	12-10-15
P4	ISSUED FOR INFORMATION	18-09-15
P3	ISSUED FOR INFORMATION	01-09-15
P2	ISSUED FOR INFORMATION	28-08-15
P1	ISSUED FOR INFORMATION	24-08-15



THIS DRAWING CANNOT BE COPIED OR REPRODUCED IN ANY FORM OR USED FOR ANY OTHER PURPOSE OTHER THAN THAT ORIGINALLY INTENDED WITHOUT THE WRITTEN PERMISSION OF AT&L

Client

Scales	Drawn	ASD
1:4000	Designed	ASD
	Checked	AT
	Approved	

Project
SWMP DADI, EASTERN CREEK

Title
PROPOSED FUTURE STORMWATER MANAGEMENT PLAN

Civil Engineers and Project Managers

Suite 702, 154 Pacific Hwy
St Leonards NSW 2065
ABN 96 130 882 405
Tel: 02 9439 1777
Fax: 02 9460 8413
www.atl.net.au
info@atl.net.au

Status
FOR INFORMATION NOT TO BE USED FOR CONSTRUCTION

Drawing No. SKC007	Project No. 15-309	Issue P5
-----------------------	-----------------------	-------------