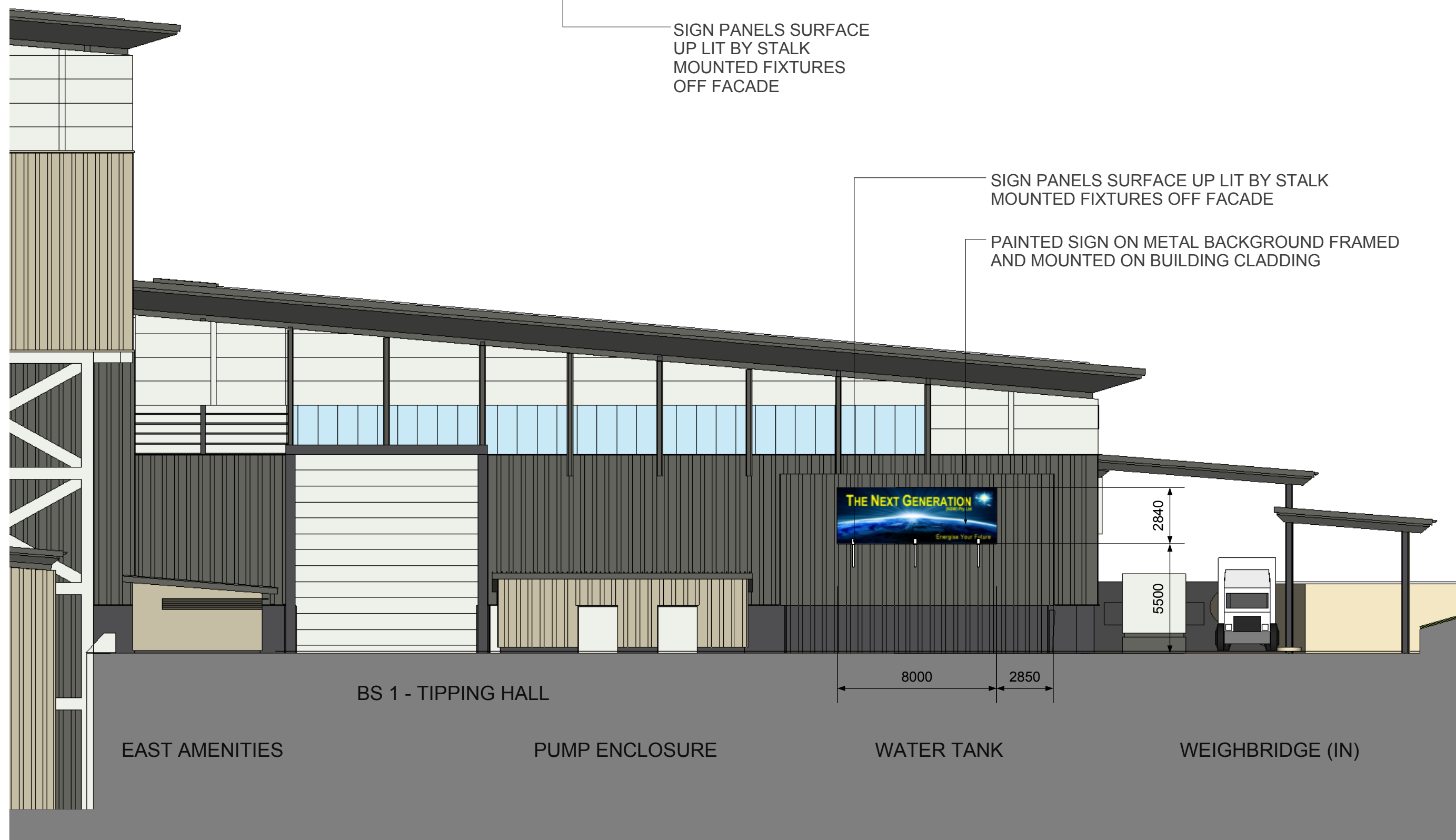


A NORTH ELEVATION PART
1:200

PAINTED SIGN ON METAL BACKGROUND FRAMED
AND MOUNTED ON BUILDING CLADDING

SIGN PANELS SURFACE
UP LIT BY STALK
MOUNTED FIXTURES
OFF FACADE

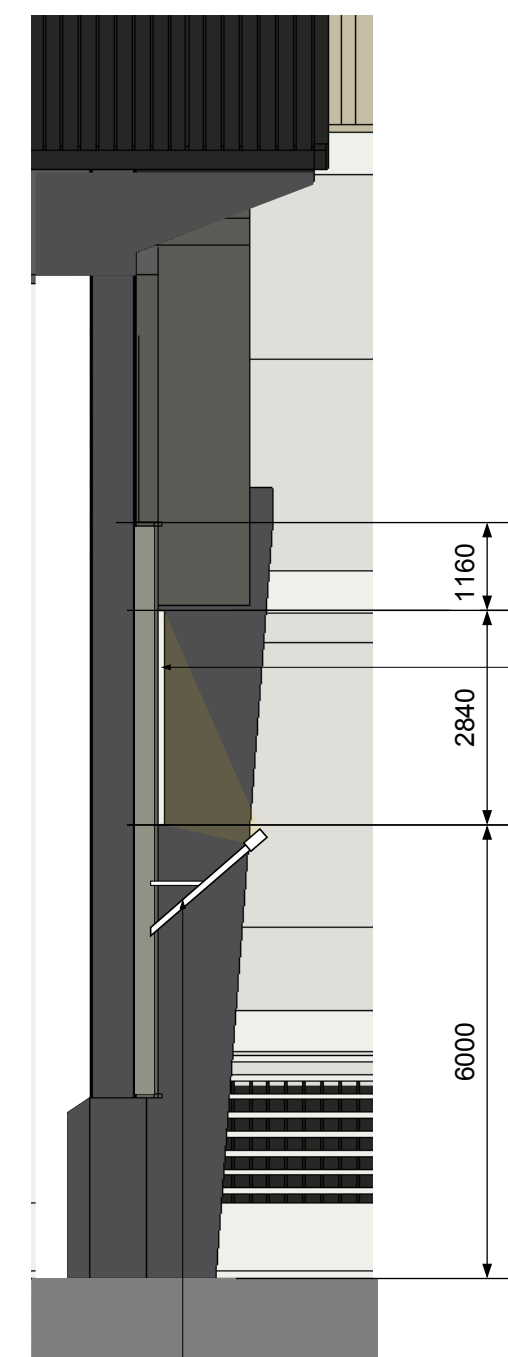


B EAST ELEVATION PART
1:200

SIGN PANELS SURFACE UP LIT BY STALK
MOUNTED FIXTURES OFF FACADE

PAINTED SIGN ON METAL BACKGROUND FRAMED
AND MOUNTED ON BUILDING CLADDING

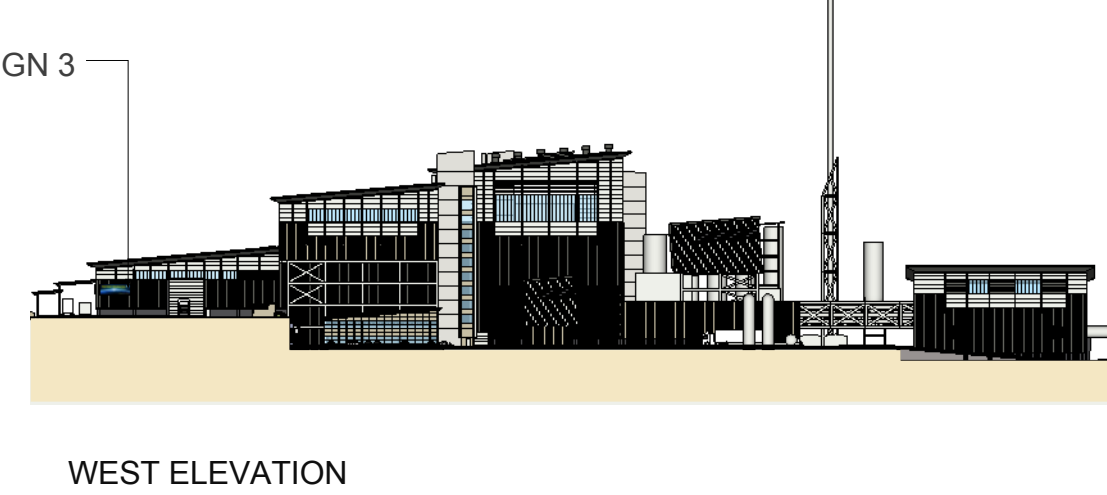
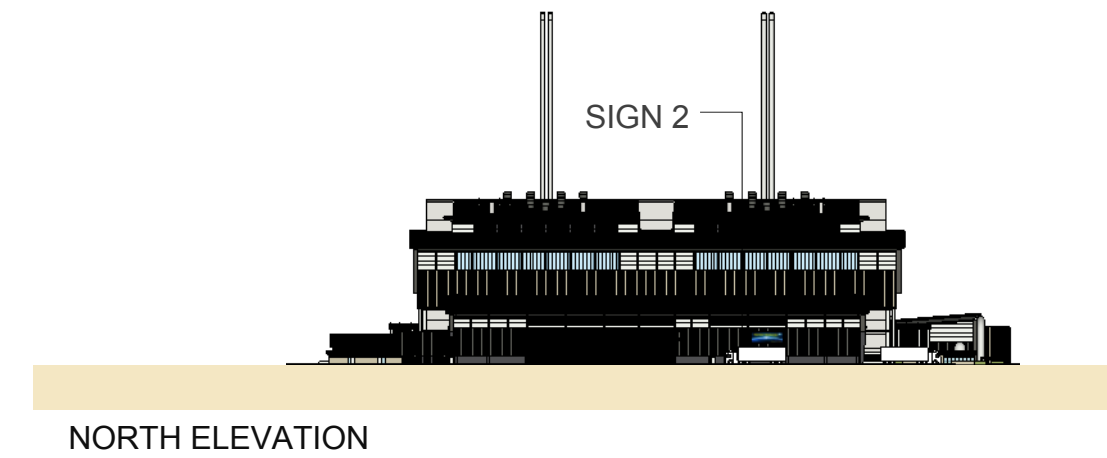
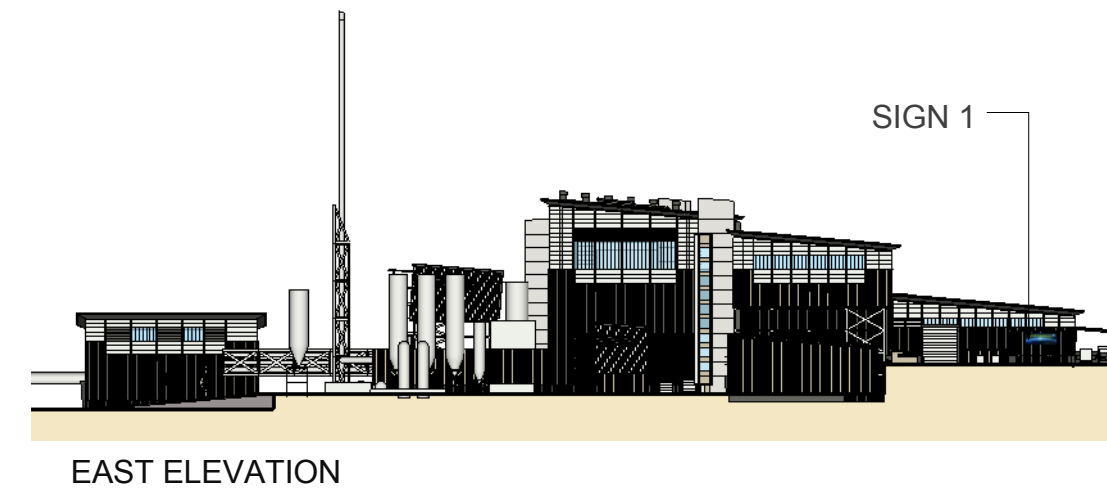
PAINTED SIGN ON METAL
BACKGROUND FRAMED AND
MOUNTED ON BUILDING CLADDING.
PROJECTION FROM BUILDING FACE
100mm MAX



D SECTION
1:100

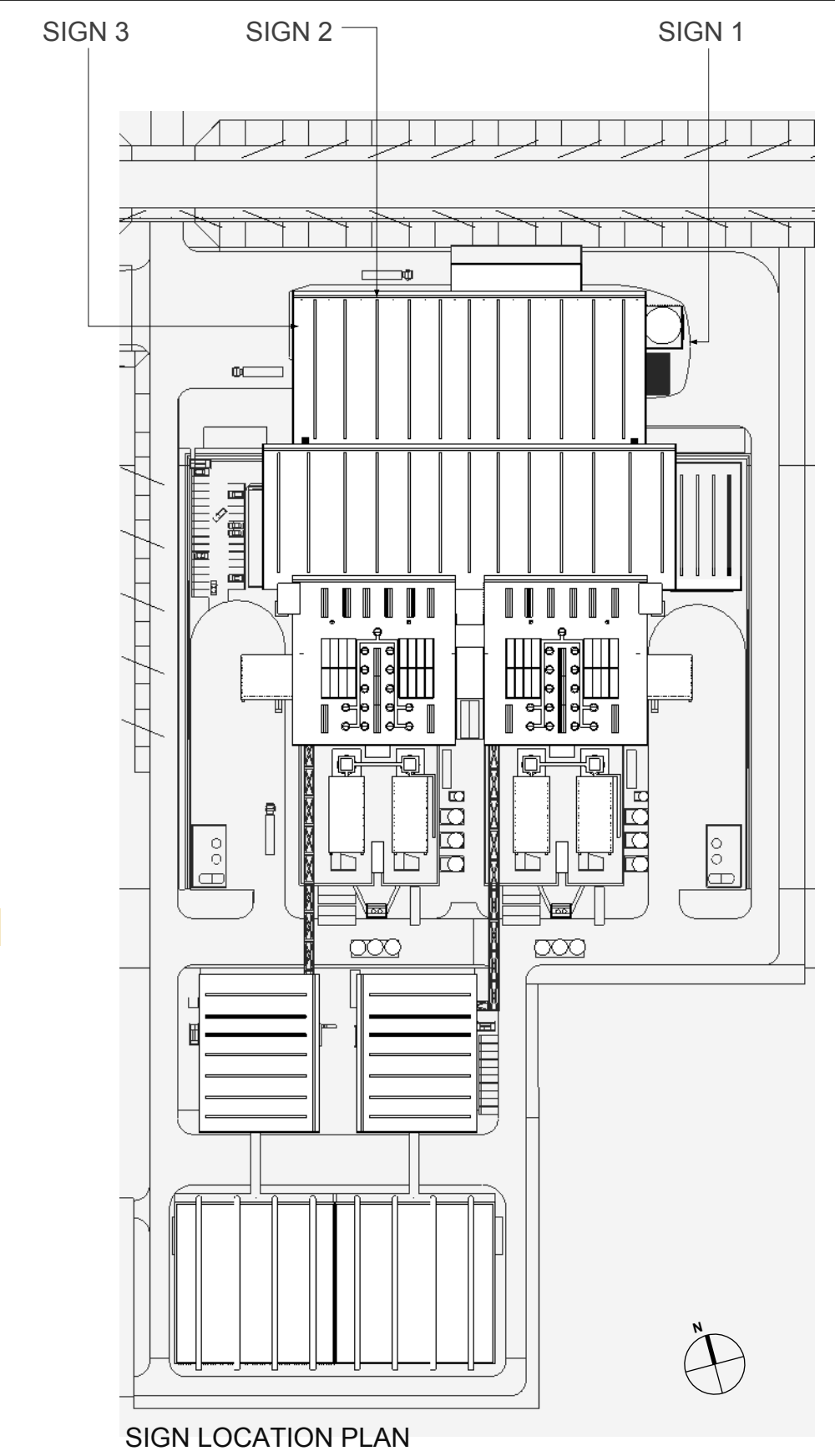
SIGN PANELS SURFACE
UP LIT BY STALK
MOUNTED FIXTURES
OFF FACADE

REFERENCE ELEVATIONS :



E SIGN DETAIL
1:100

PAINTED SIGN ON METAL BACKGROUND FRAMED
AND MOUNTED ON BUILDING CLADDING.
100mm MAX COLOURED METAL FRAME.
SURFACE UP LIT BY STALK MOUNTED FIXTURES
OFF FACADE



SIGN LOCATION PLAN



C WEST ELEVATION PART
1:200

PAINTED SIGN ON METAL BACKGROUND FRAMED
AND MOUNTED ON BUILDING CLADDING

SIGN PANELS SURFACE
UP LIT BY STALK
MOUNTED FIXTURES
OFF FACADE

DO NOT SCALE DRAWINGS.
VERIFY ALL DIMENSIONS ON SITE.
REFER ANY DISCREPANCIES TO
THE SUPERINTENDENT BEFORE
PROCEEDING WITH THE WORK.

© krikis tayler architects Pty Ltd
These drawings are subject to copyright and may not be
copied, used or reproduced in any way without the express
permission of krikis tayler architects Pty Ltd



PROPRIETOR

PROPOSED BUILDING SIGNAGE

ARCHITECT

a level 7 97 pacific highway
north sydney nsw 2060
m po box 726 north sydney nsw 2059
p +61 (0)2 9900 6000 f +61 (0)2 9900 6001
w www.krikistayler.com.au



krikis tayler architects

PRELIMINARY

DATE 25.03.2015

DRAWING NO.

AR-KTA-1901

ISSUE

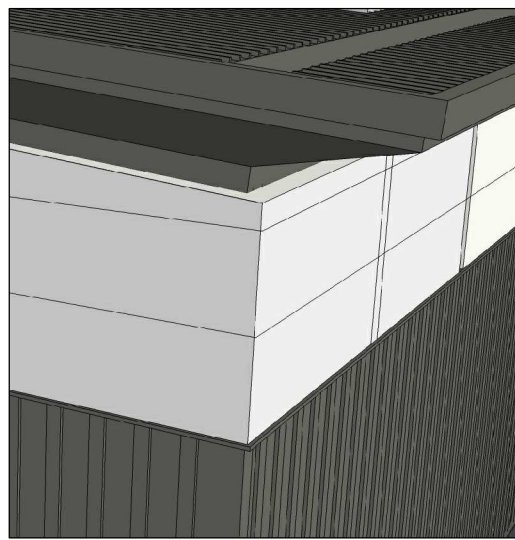
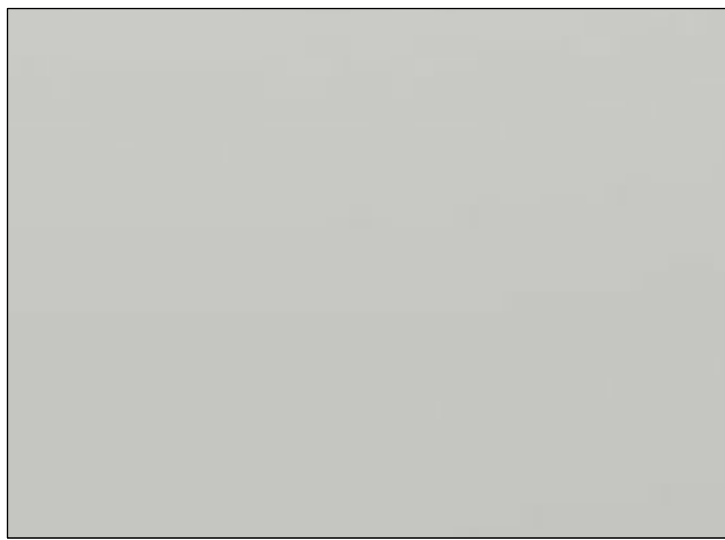
2

100mm

200mm

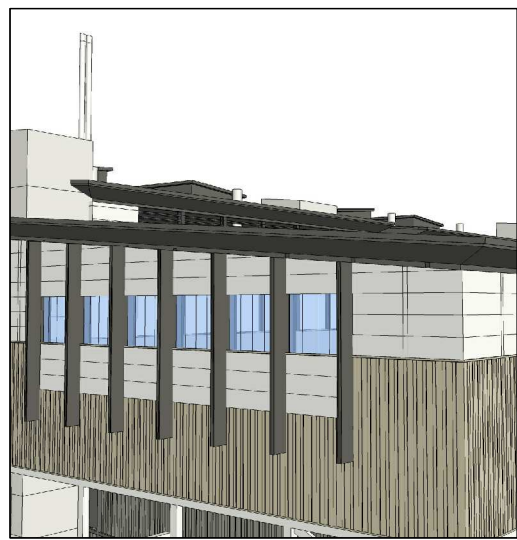
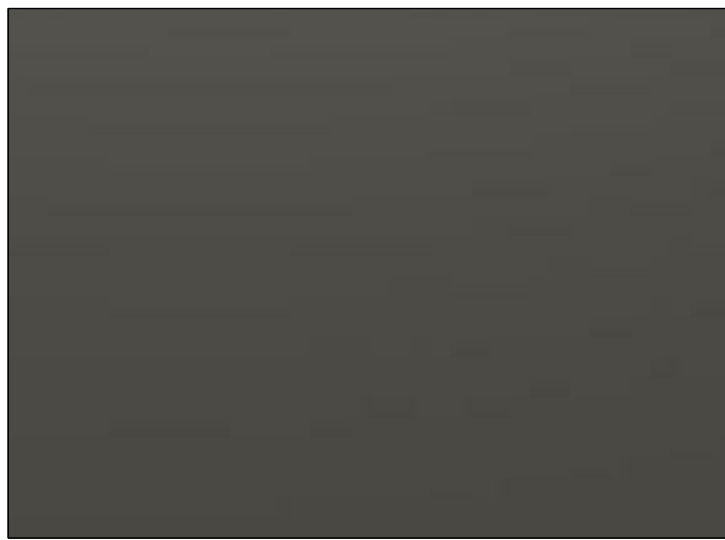
300mm ON ORIGINAL

A1



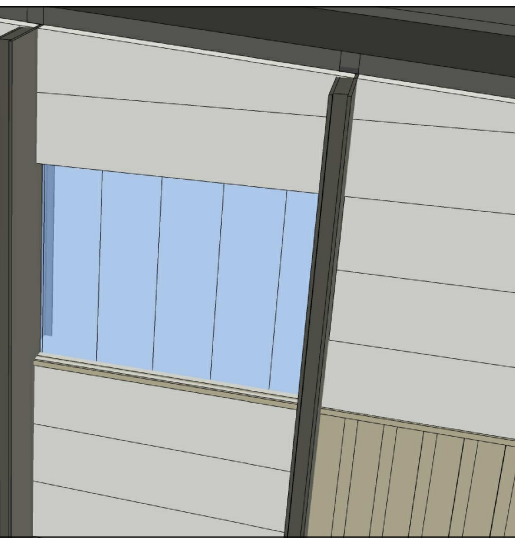
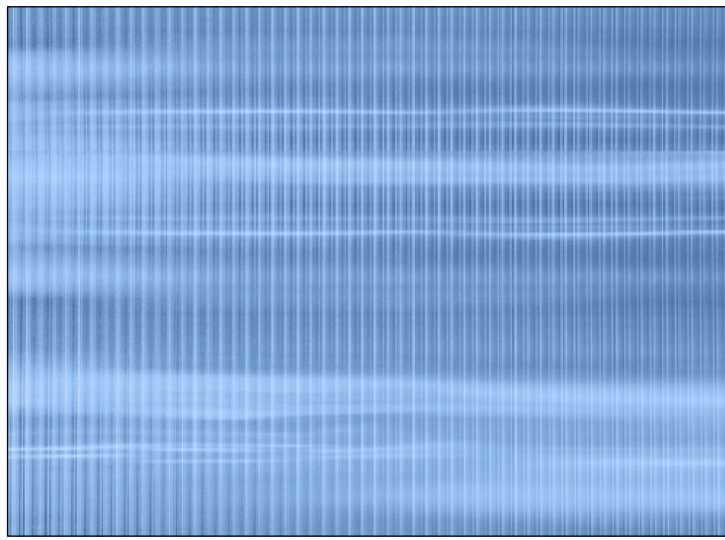
'Silver Metallic' ALUCOBOND or Similar

A1 COMPOSITE METAL PANELS




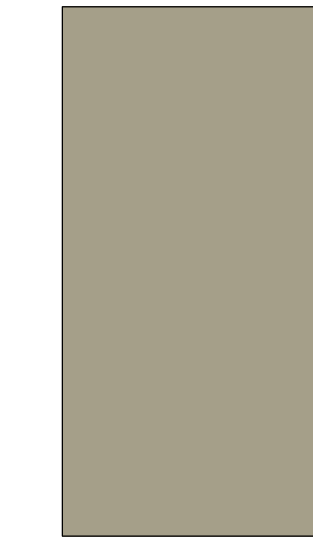
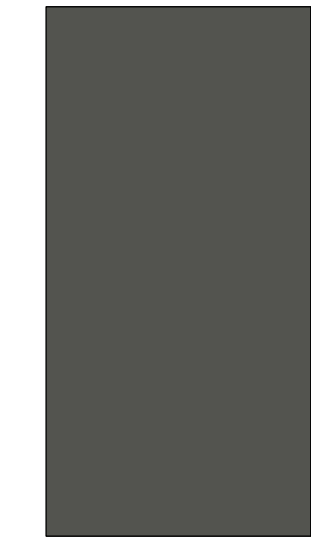
'Dark Grey Metallic' ALUCOBOND or Similar

A2 SOFFIT LINING, FASCIA & PROJECTING BLADES



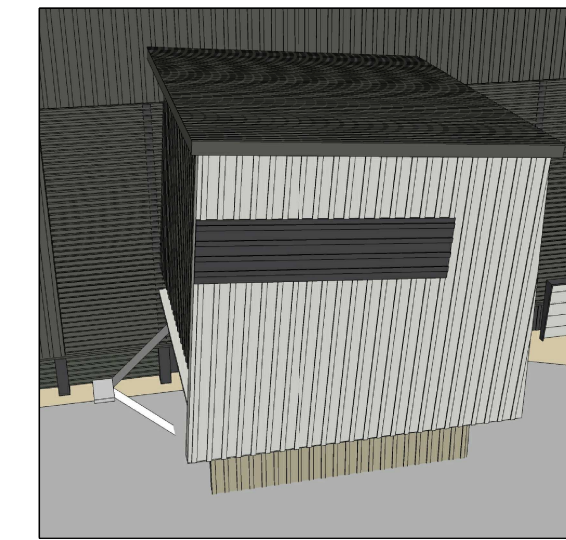
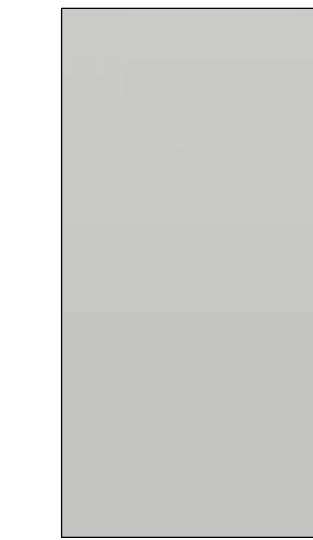

'Blue DANPALON DP16 16mm' or Similar

B POLYCARBONATE GLAZING



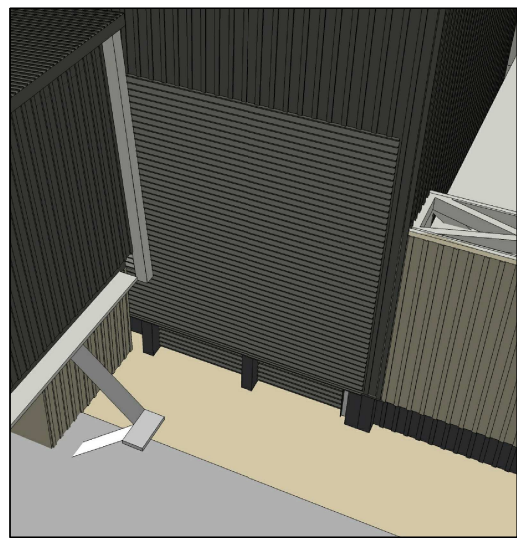

C1 : 'Woodland Grey' C2 : 'Cove'

C VERTICAL PREFINISHED PROFILED METAL CLADDING
COLORBOND COLOUR



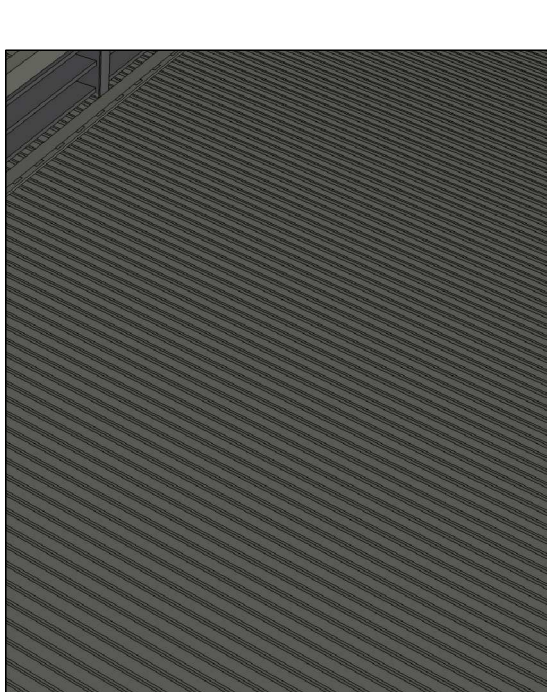
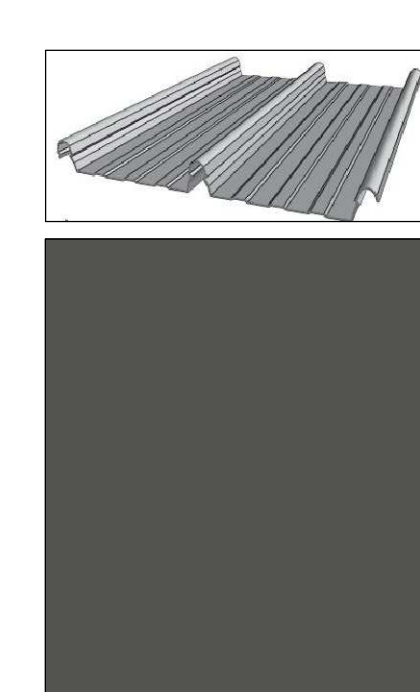
C3 : 'Monument' C4 : To Match 'Silver Metallic'

C VERTICAL PREFINISHED PROFILED METAL CLADDING
COLORBOND COLOUR



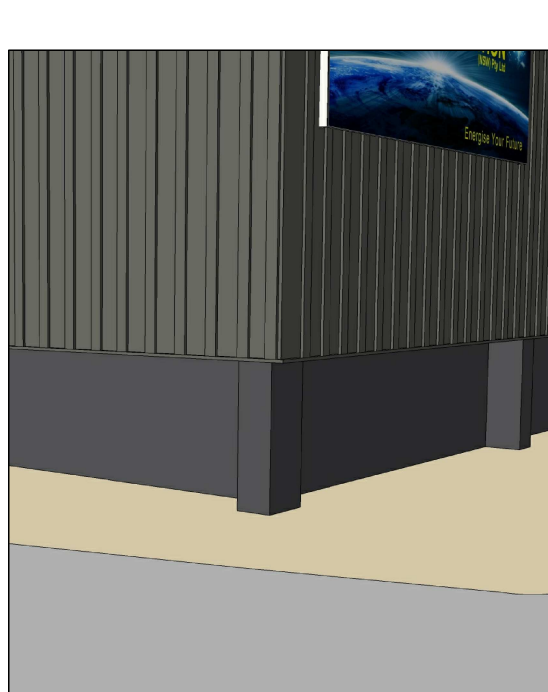

Powder Coat Finish to match COLORBOND 'Woodland Grey'

D PREFINISHED METAL LOUVRES



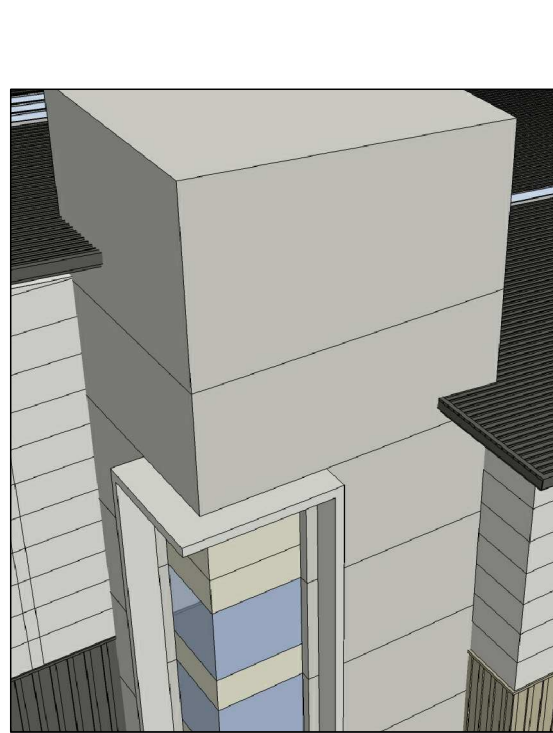

FIELDERS 'Hiklip 630'. Colour : 'Woodland Grey' or Similar.
On Foil-backed Mineral Wool Insulation with Safety Mesh Support

E PREFINISHED ROOF DECKING





To match COLORBOND 'Monument'

F EXTERIOR PAINT FINISH TO CONCRETE
PUSH - WALL

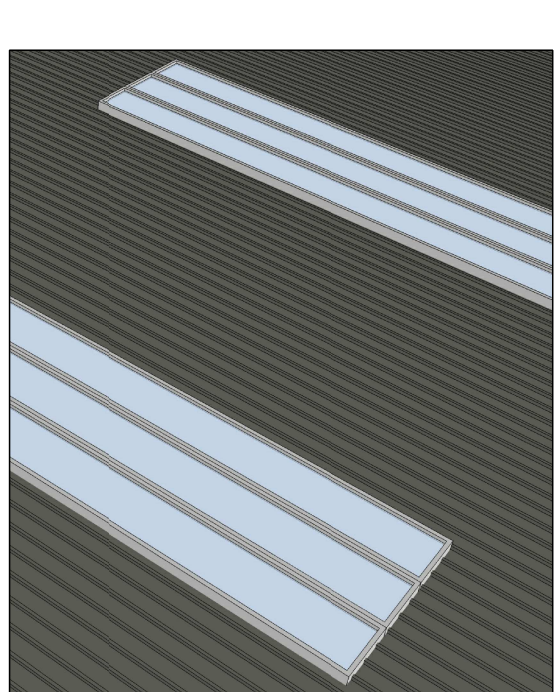



KEIM Paint : 'Royalan Colour 9590' @ 30% Finish or Similar

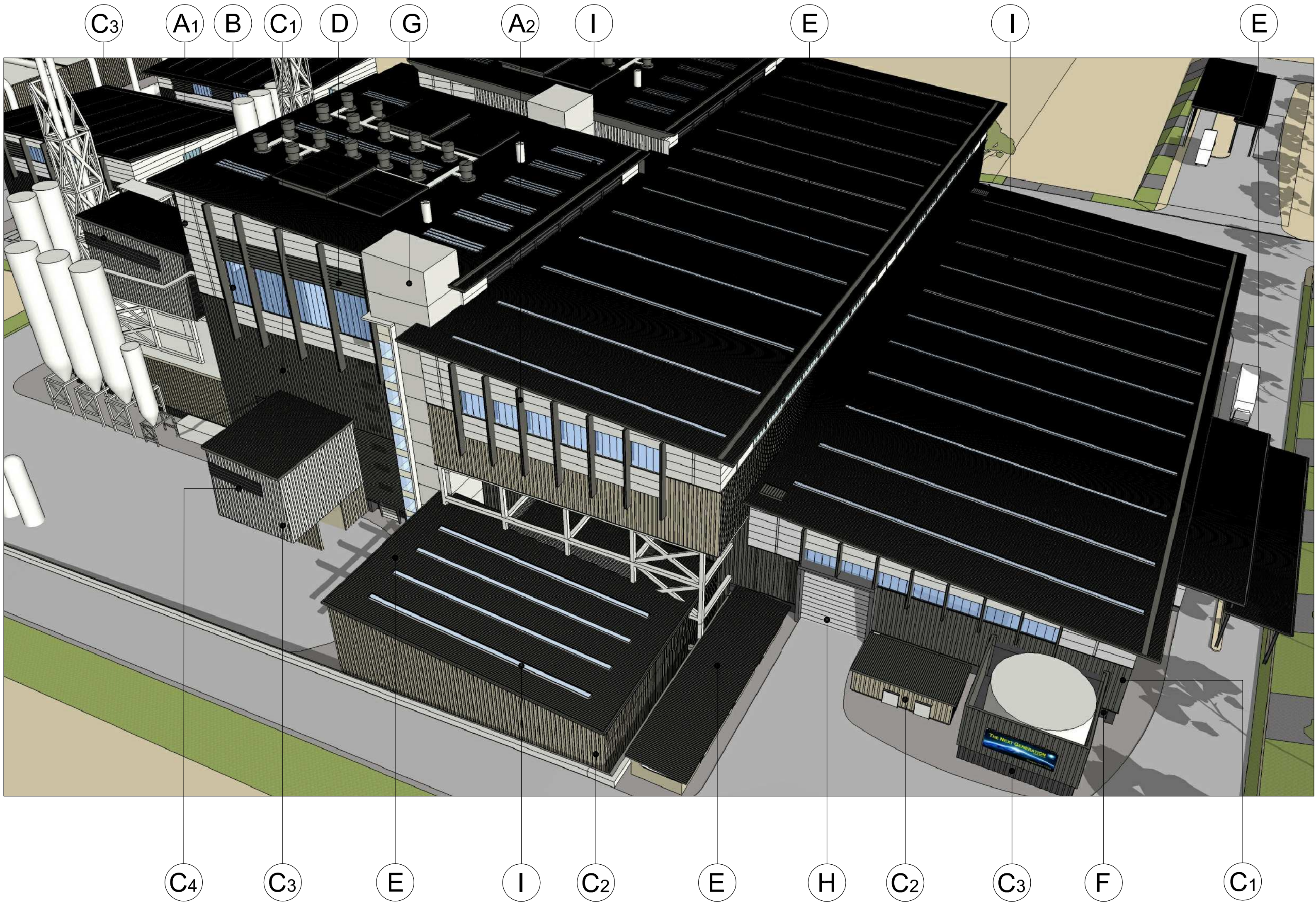
G PAINT FINISH TO OFF-FORM
CONCRETE CORE



H STEEL ROLLER SHUTTER DOOR



I POLYCARBONATE ROOFLIGHTS



DO NOT SCALE DRAWINGS.
VERIFY ALL DIMENSIONS ON SITE.
REFER ANY DISCREPANCIES TO
THE SUPERINTENDENT BEFORE
PROCEEDING WITH THE WORK.

© krikis taylor architects Pty Ltd
These drawings are subject to copyright and may not be copied, used
or reproduced in any way without the express permission of
krikis taylor architects Pty Ltd.



PROPRIETOR

EXTERNAL MATERIAL COLOUR SAMPLES

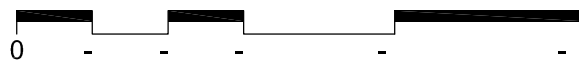
ARCHITECT

a level 7 97 pacific highway
north sydney nsw 2060
m po box 726 north sydney nsw 2059
p +61(0)2 9900 6000 f +61(0)2 9900 6001
www.krikistaylor.com.au



PRELIMINARY

DATE 25.03.2015
SCALE -



DRAWING NO.
AR-KTA-1911

ISSUE
2



THE NEXT GENERATION- ENERGY FROM WASTE FACILITY

EASTERN CREEK, SYDNEY

DO NOT SCALE DRAWINGS.
VERIFY ALL DIMENSIONS ON SITE.
REFER ANY DISCREPANCIES TO
THE SUPERINTENDENT BEFORE
PROCEEDING WITH THE WORK.

© **krikis taylor** architects Pty Ltd
These drawings are subject to copyright and may not be copied, used
or reproduced in any way without the express permission of
krikis taylor architects Pty Ltd.



PROPRIETOR

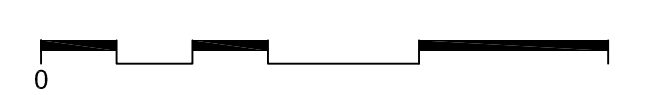
PERSPECTIVE VIEW 1 FROM
ENTRY ROAD @ THE WEST

ARCHITECT

a level 7 97 pacific highway
north sydney nsw 2060
m po box 726 north sydney nsw 2059
p +61(0)2 9900 6000 f +61(0)2 9900 6001
w www.krikistaylor.com.au



DATE 16.03.2015
SCALE N.T.S



DRAWING NO.
AR-KTA-1921

ISSUE
1

A1



THE NEXT GENERATION- ENERGY FROM WASTE FACILITY

EASTERN CREEK, SYDNEY

DO NOT SCALE DRAWINGS.
VERIFY ALL DIMENSIONS ON SITE.
REFER ANY DISCREPANCIES TO
THE SUPERINTENDENT BEFORE
PROCEEDING WITH THE WORK.

© **krikis taylor** architects Pty Ltd
These drawings are subject to copyright and may not be copied, used
or reproduced in any way without the express permission of
krikis taylor architects Pty Ltd.



PROPRIETOR

PERSPECTIVE VIEW 2 FROM
THE SOUTH-WEST

ARCHITECT

a level 7 97 pacific highway
north sydney nsw 2060
m po box 726 north sydney nsw 2059
p +61(0)2 9900 6000 f +61(0)2 9900 6001
www.krikistaylor.com.au



DATE 16.03.2015
SCALE N.T.S

DRAWING NO.

AR-KTA-1922

ISSUE

1

100mm

200mm

300mm ON ORIGINAL

A1