

INDICATIVE PLANT SCHEDULE

Trees					
Species	Common Name	Size	Spacing	Mature Height	Mature Spread
<i>Ulmus parvifolia</i>	Chinese Elm	200L	As shown	8-10m	4-5m
Shrubs					
Species	Common Name	Size	Spacing	Mature Height	Mature Spread
<i>Acmena 'Allyn Magic'</i>	Dwarf Lilly Pilly	200mm	400mm	600mm	500mm
<i>Lavandula allardii</i>	Lavender	200mm	500mm	600mm	600mm
<i>Raphiolepis 'Snow Maiden'</i>	Indian Hawthorn	200mm	400mm	1.0m	1.0m
<i>Rosmarinus officinalis</i>	Rosemary	300mm	500mm	900mm	1.0m
<i>Syzygium 'Tiny Trev'</i>	Dwarf Lilly Pilly	400mm	400mm	600mm	600mm
<i>Viburnum coccineum</i>	Sweet Viburnum	300mm	500mm	1200mm	800mm
<i>Westringia fruticosa</i>	Coastal Rosemary	300mm	600mm	1500mm	1200mm
Perennials and Groundcovers					
Species	Common Name	Size	Spacing	Mature Height	Mature Spread
<i>Acanthus mollis</i>	Oyster Plant	200mm	400mm	800mm	1.0m
<i>Aspidistra elatior</i>	Cast Iron Plant	200mm	400mm	600mm	450mm
<i>Bambusa lako</i>	Timor Black Bamboo	45L	As shown	8-10m	600mm
<i>Bambusa textilis gracilis</i>	Slender Weavers Bamboo	300mm	As shown	5-6m	300mm
<i>Clivia miniata</i>	Kaffir Lily	200mm	400mm	450mm	300mm
<i>Cinrum pandurculatum</i>	Swamp Lily	200mm	400mm	1.2m	1.0m
<i>Dianella King Alfred</i>	Dianella	200mm	400mm	450mm	300mm
<i>Diets grandiflora</i>	Wild Iris	200mm	400mm	600mm	800mm
<i>Doranthus excelsa</i>	Gymea Lily	300mm	600mm	1.5m	1.0m
<i>Erostemon myoporoides</i>	Long Leaf Wax Flower	200mm	500mm	1.0m	1.5m
<i>Liriope 'Evergreen Giant'</i>	Giant Liriope	150mm	300mm	300mm	450mm
<i>Ophiopogon japonicus</i>	Mondo Grass	150mm	300mm	150mm	150mm
<i>Neomerica gracilis</i>	Walking Iris	200mm	400mm	450mm	450mm
<i>Pennisetum alopecuroides</i>	Swamp Foxtail	150mm	300mm	800mm	600mm
<i>Philodendron 'Xanadu'</i>	Xanadu Philodendron	200mm	400mm	600mm	800mm
<i>Phormium 'Bronze Baby'</i>	Dwarf Bronze Flax	300mm	600mm	500mm	600mm
<i>Poa labillardieri</i> Eskdale	Small Tussock Grass	150mm	300mm	600mm	450mm
<i>Sparganium walleyi</i>	Dwarf Peace Lily	150mm	300mm	450mm	600mm
<i>Thymus vulgaris</i>	Common Thyme	150mm	300mm	200mm	300mm
Climbers					
Species	Common Name	Size	Spacing	Mature Height	Mature Spread
<i>Cissus antarctica</i>	Kangaroo Vine	200mm	As shown	Varies	Varies
<i>Ficus pumila</i>	Creeeping Fig	150mm	As shown	Varies	Varies
<i>Trachelospermum jasminoides</i>	Chinese Star Jasmine	200mm	As shown	Varies	Varies
Ferns					
Species	Common Name	Size	Spacing	Mature Height	Mature Spread
<i>Blechnum cartilagineum</i>	Gristle Fern	200mm	500mm	500mm	600mm
<i>Cyathea cooperi</i>	Australian Tree Fern	200L / 2m trunk	As shown	4-6m	2m
<i>Dicksonia antarctica</i>	Soft Tree Fern	1800mm trunk	As shown	4-6m	2m

KEY PLAN

DATE	DESCRIPTION	REV
24.08.12	ISSUE FOR DA	A
29.08.12	ISSUE FOR DA	B
30.08.12	ISSUE FOR DA	C
21.09.12	ISSUE FOR DA	D
14.12.12	ISSUE FOR DA	E
16.04.13	ISSUE FOR DA	F
16.05.13	ISSUE FOR DA	G
20.08.13	ISSUE FOR DA	H

REVISIONS



CLIENT

RICE DAUBNEY
ANALYSING CREATING AND IMPLEMENTING ARCHITECTURE
110 WALKER STREET | NORTH SYDNEY 2060
T: 02 9559 2888 | F: 02 9559 3015
rd@ricedaubney.com.au | www.ricedaubney.com.au
the rice daubney group (pty) ltd. acn 77 001 100 766
inc. abn 62 001 100 766

ARCHITECT

NELNUE COMPREHENSIVE CANCER CENTRE
AND AUSTRALIAN ADVANCED TREATMENT CENTRE
AVOCA STREET, RANDWICK

PROJECT

DEVELOPMENT APPLICATION

PURPOSE OF DRAWING

OVERALL LANDSCAPE PLAN

DRAWING TITLE

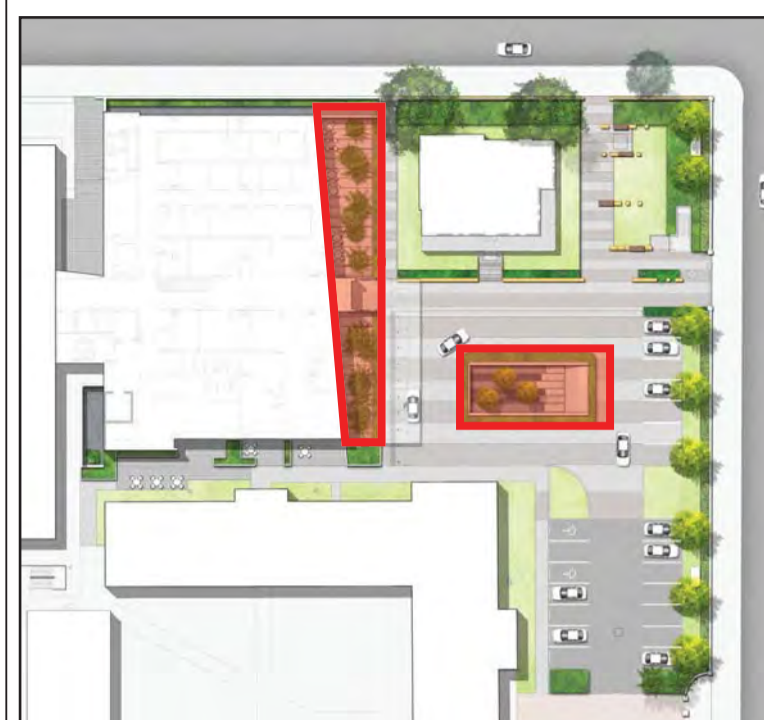


NORTH SCALE BAR

SCALE	1:200 @ A1	DRAWN BY	AG
DATE	20.08.13	CHECKED BY	DF
JOB NO.	S12-026	APPROVED BY	KS
FILENAME	N/A		

DRAWING NO.	REVISION
DA_L101	H

DRAWING INFORMATION



KEY PLAN

KEY PLAN

DATE	DESCRIPTION	REV
24.08.12	ISSUE FOR DA	A
29.08.12	ISSUE FOR DA	B
30.08.12	ISSUE FOR DA	C
21.09.12	ISSUE FOR DA	D
14.12.12	ISSUE FOR DA	E
16.03.13	ISSUE FOR DA	F
16.05.13	ISSUE FOR DA	G
20.08.13	ISSUE FOR DA	H

REVISIONS



HEALTH INFRASTRUCTURE

CLIENT

RICE DAUBNEY
 ANALYSING CREATING AND IMPLEMENTING ARCHITECTURE
 110 WALKER STREET | NORTH SYDNEY 2060
 T: 02 9557 2000 F: 02 9557 3015
 rd@ricedaubney.com.au | www.ricedaubney.com.au
 the rice daubney group (pty) ltd. acn 117 001 100 766
 rda-ricedaubney-trading-trust acn 08 960 024 002



ARCHITECT

NELUNE COMPREHENSIVE CANCER CENTRE
 AND AUSTRALIAN ADVANCED TREATMENT CENTRE
 AVOCA STREET, RANDWICK

PROJECT

DEVELOPMENT APPLICATION

PURPOSE OF DRAWING

LEVEL ZERO SUNKEN COURTYARDS

DRAWING TITLE



NORTH SCALE BAR

SCALE	1:100 @ A1	DRAWN BY	AG
DATE	20.08.13	CHECKED BY	DF
JOB NO.	S12-026	APPROVED BY	KS
FILENAME	N/A		

DRAWING NO.	REVISION
DA_L102	H

DRAWING INFORMATION



ACCESSIBLE COURTYARD

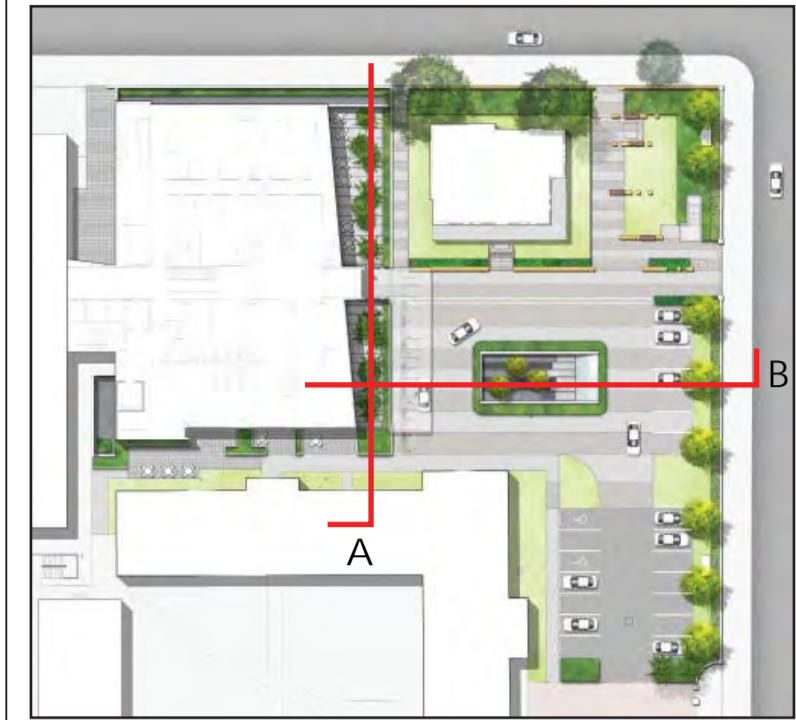
- TREE FERNS IN LOW MASS PLANTING
- SPACE FOR FLEXIBLE FURNITURE
- AT GRADE PLANTER BEDS
- CONCRETE PAVING WITH COBBLE BANDING
- GLASS BALUSTRADE AT UPPER LEVEL
- TREE FERNS IN LOW MASS PLANTING
- DOUBLE HEIGHT CUT SANDSTONE WALL TO REAR OF COURTYARD
- MASS PLANTING
- TREE FERNS IN LOW MASS PLANTING

ACCESSIBLE COURTYARD

- TREE FERNS IN LOW MASS PLANTING
- CONCRETE PAVING WITH COBBLE BANDING
- DOUBLE HEIGHT CUT SANDSTONE WALL TO REAR OF COURTYARD
- MASS PLANTING

SEMI-ACCESSIBLE COURTYARD

- SHADE TOLERANT TREE PLANTING *Ulmas parvifolia*
- SLOPING GLAZED WALL
- BANDS OF GRAVEL
- COLOURED INSITU CONCRETE PAVING
- PRECAST CONCRETE FEATURE WALL WITH CLIMBING PLANTS ON STEEL CABLES



KEY PLAN

KEY PLAN

DATE	DESCRIPTION	REV
24.08.12	ISSUE FOR DA	A
29.08.12	ISSUE FOR DA	B
30.08.12	ISSUE FOR DA	C
21.09.12	ISSUE FOR DA	D
14.12.12	ISSUE FOR DA	E
16.04.13	ISSUE FOR DA	F
16.05.13	ISSUE FOR DA	G
20.08.13	ISSUE FOR DA	H

REVISIONS



CLIENT
RICE DAUBNEY
 ANALYSING CREATING AND IMPLEMENTING ARCHITECTURE
 110 WALKER STREET | NORTH SYDNEY 2060
 T: 02 9559 2000 F: 02 9559 2015
 rd@ricedaubney.com.au | www.ricedaubney.com.au
 the rice daubney group (pty) ltd. a/cn 17 001 100 766
 nsw chesney trading (pty) ltd. a/cn 08 000 024 000

PROJECT
 NELUNE COMPREHENSIVE CANCER CENTRE
 AND AUSTRALIAN ADVANCED TREATMENT CENTRE
 AVOCA STREET, RANDWICK

DEVELOPMENT APPLICATION

PURPOSE OF DRAWING

SECTIONAL ELEVATIONS

DRAWING TITLE



NORTH SCALE BAR

SCALE	1:100 @ A1	DRAWN BY	AG
DATE	20.08.13	CHECKED BY	DF
JOB NO.	S12-026	APPROVED BY	KS
FILENAME	N/A		

DRAWING NO.	REVISION
DA_L201	H

DRAWING INFORMATION



SECTION A

- EXISTING EDMUND BLACKETT HERITAGE BUILDING BEHIND
- STAFF OUTDOOR SEATING AREA
- GLASS BALUSTRADE AT UPPER LEVEL
- TREE FERNS IN LOW MASS PLANTING

ACCESSIBLE SUNKEN GARDEN

PRE-CAST PARAPET WALL

LEVEL ONE LINEAR GARDEN (INACCESSIBLE)

TREE FERNS IN MASS PLANTING

SPACE FOR MOVEABLE FURNITURE AT GRADE PLANTER BEDS



- DROP OFF AREA
- GLASS BALUSTRADE AT UPPER LEVEL
- CUT SANDSTONE WALL
- TREE FERNS IN LOW MASS PLANTING

ACCESSIBLE SUNKEN GARDEN

EXISTING MEDICAL SUPERINTENDANT'S COTTAGE

PUBLIC GARDEN IN BACKGROUND

AT GRADE HEDGE PLANTING

SLOPING GLAZED WALL TO FORM BALUSTRADE AT UPPER LEVEL

PRECAST CONCRETE FEATURE WALL WITH CLIMBING PLANTS ON CABLES

SHADE TOLERANT EVERGREEN TREE PLANTING *Ulmus parvifolia*

FEATURE GRAVEL

COLOURED INSITU CONCRETE PAVING

TREES / FERNS



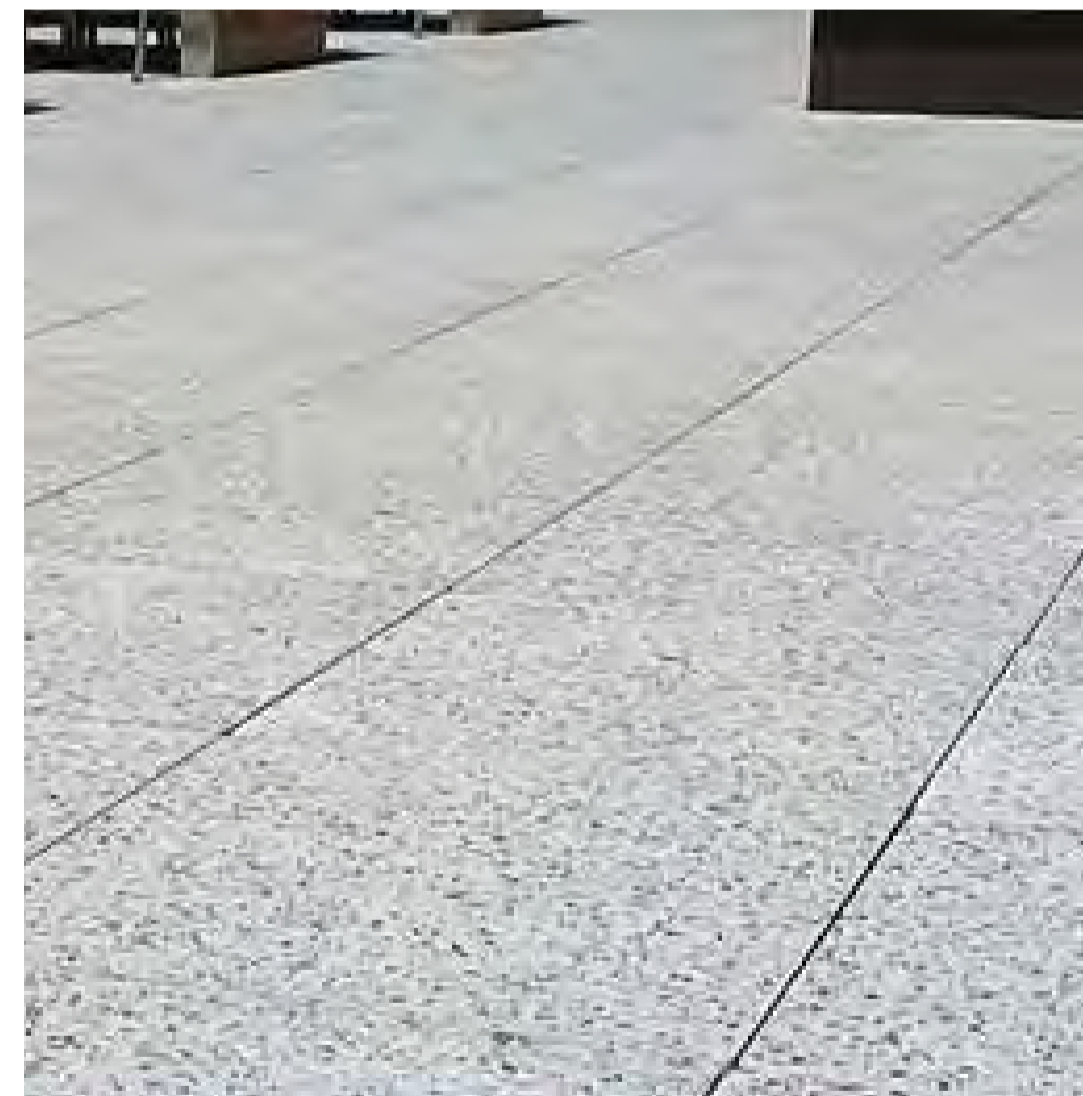
SHRUBS



PERENNIALS AND GROUNDCOVERS



ELEMENTS



KEY PLAN

DATE	DESCRIPTION	REV
24.08.12	ISSUE FOR DA	A
29.08.12	ISSUE FOR DA	B
30.08.12	ISSUE FOR DA	C
21.09.12	ISSUE FOR DA	D
14.12.12	ISSUE FOR DA	E
16.05.13	ISSUE FOR DA	F
16.05.13	ISSUE FOR DA	G
20.08.13	ISSUE FOR DA	H

REVISIONS



HEALTH INFRASTRUCTURE

CLIENT

RICE DAUBNEY
 ANALYSING CREATING AND
 IMPLEMENTING ARCHITECTURE
 110 WALKER STREET | NORTH SYDNEY 2060
 T: 02 9559 2000 F: 02 9559 2015
 rd@ricedaubney.com.au | www.ricedaubney.com.au
 the rice daubney group (pty) ltd. abn: 77 001 100 766
 rice daubney trading (pty) ltd. abn: 68 960 024 002

ARCHITECT

NELUNE COMPREHENSIVE CANCER CENTRE
 AND AUSTRALIAN ADVANCED TREATMENT CENTRE
 AVOCA STREET, RANDWICK

PROJECT

DEVELOPMENT APPLICATION

PURPOSE OF DRAWING

PRECEDENT/CONCEPT IMAGE SHEET

DRAWING TITLE



NORTH SCALE BAR

SCALE	N/A	DRAWN BY	AG
DATE	20.08.13	CHECKED BY	DF
JOB NO.	S12-026	APPROVED BY	KS
FILENAME	N/A		

DRAWING NO.	REVISION
DA_L400	H

DRAWING INFORMATION