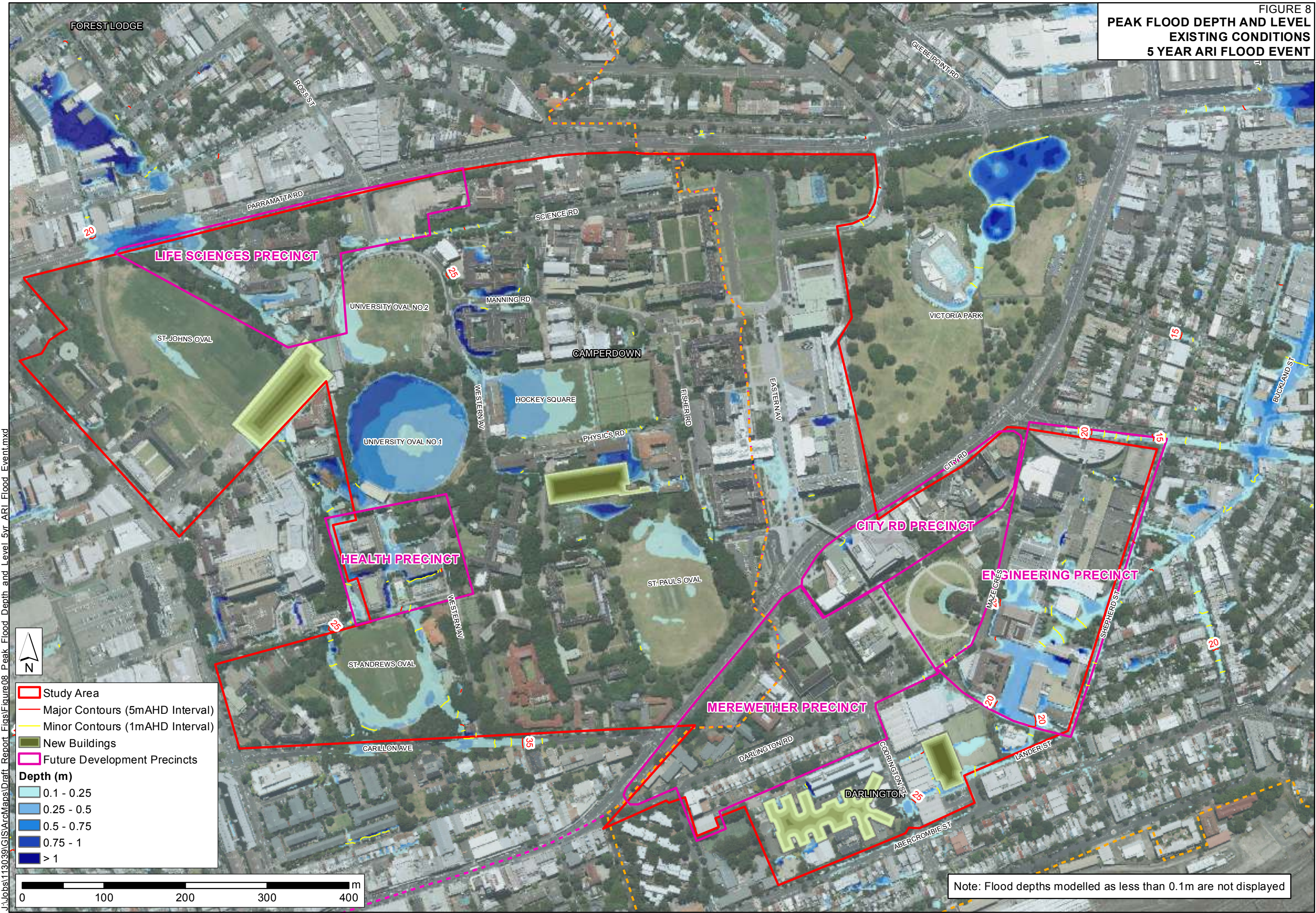


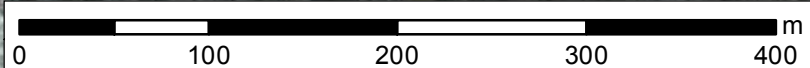
FIGURE 8
**PEAK FLOOD DEPTH AND LEVEL
 EXISTING CONDITIONS
 5 YEAR ARI FLOOD EVENT**



J:\Jobs\113039\GIS\ArcMaps\Draft_Report_Figs\Figure08_Peak_Flood_Depth_and_Level_5yr_AR1_Flood_Event.mxd

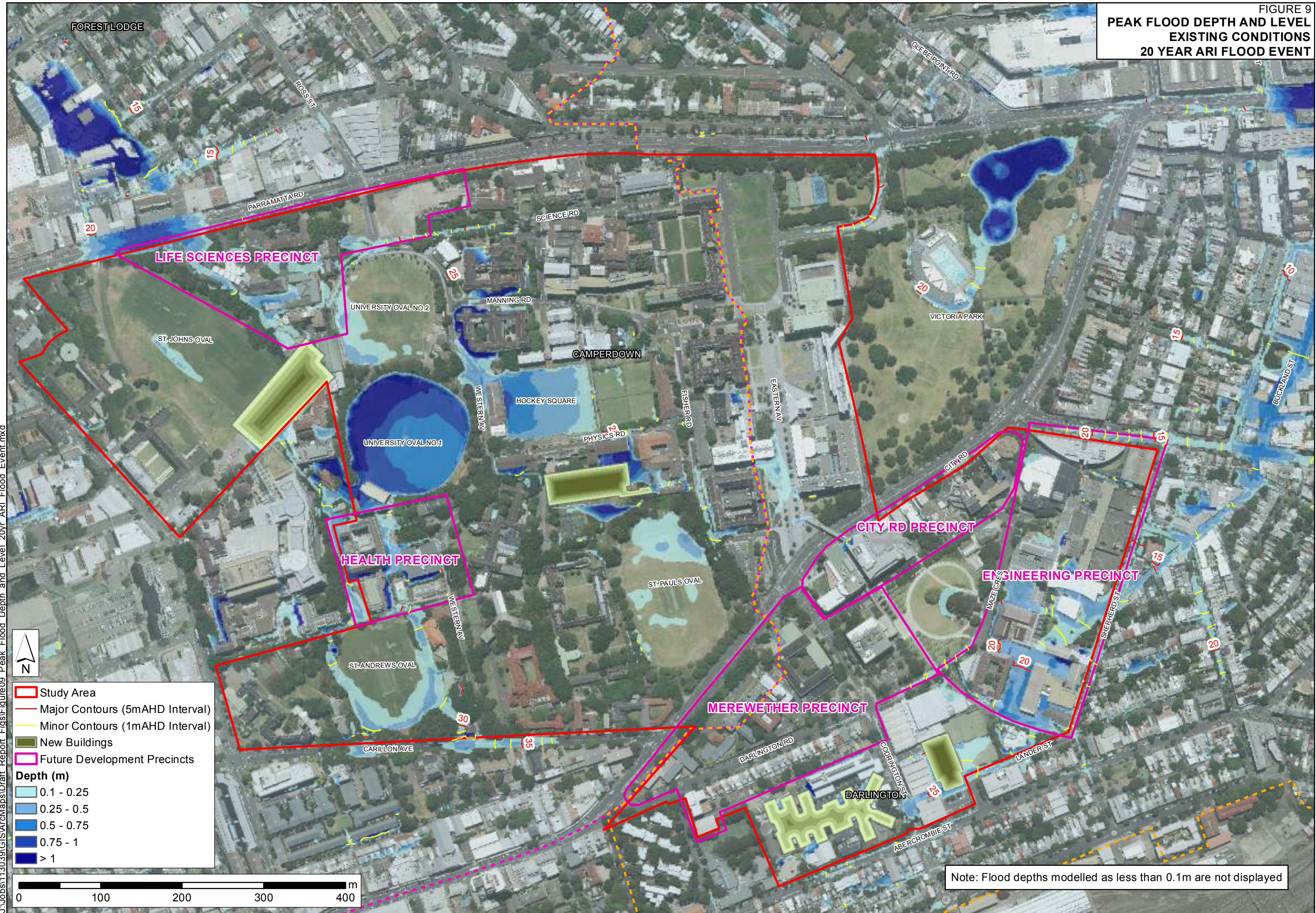


- Study Area
 - Major Contours (5mAHD Interval)
 - Minor Contours (1mAHD Interval)
 - New Buildings
 - Future Development Precincts
- Depth (m)**
- 0.1 - 0.25
 - 0.25 - 0.5
 - 0.5 - 0.75
 - 0.75 - 1
 - > 1



Note: Flood depths modelled as less than 0.1m are not displayed

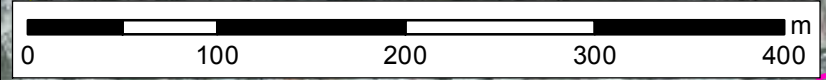
FIGURE 9
**PEAK FLOOD DEPTH AND LEVEL
 EXISTING CONDITIONS
 20 YEAR ARI FLOOD EVENT**



J:\jobs\113039\GIS\ArcMaps\Draft_Report_Figs\Figure09_Peak_Flood_Depth_and_Level_20yr_ARI_Flood_Event.mxd

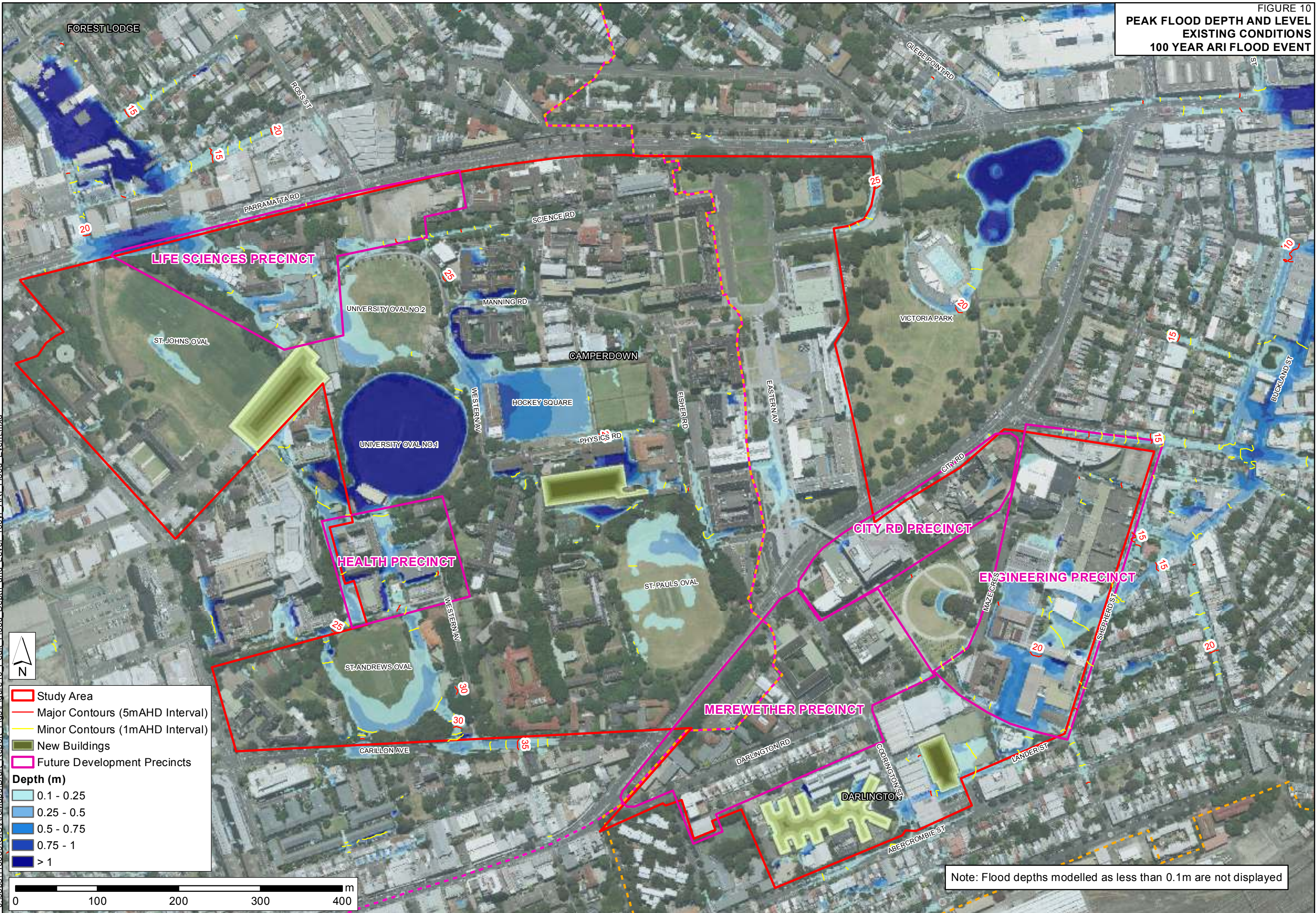


- Study Area
 - Major Contours (5m AHD Interval)
 - Minor Contours (1m AHD Interval)
 - New Buildings
 - Future Development Precincts
- Depth (m)**
- 0.1 - 0.25
 - 0.25 - 0.5
 - 0.5 - 0.75
 - 0.75 - 1
 - > 1



Note: Flood depths modelled as less than 0.1m are not displayed

FIGURE 10
**PEAK FLOOD DEPTH AND LEVEL
 EXISTING CONDITIONS
 100 YEAR ARI FLOOD EVENT**



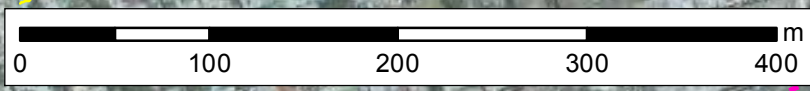
J:\Jobs\113039\GIS\ArcMaps\Draft_Report_Figs\Figure 10 Peak Flood Depth and Level 100yr ARI Flood Event.mxd

Study Area

- Study Area
- Major Contours (5m AHD Interval)
- - - Minor Contours (1m AHD Interval)
- New Buildings
- Future Development Precincts

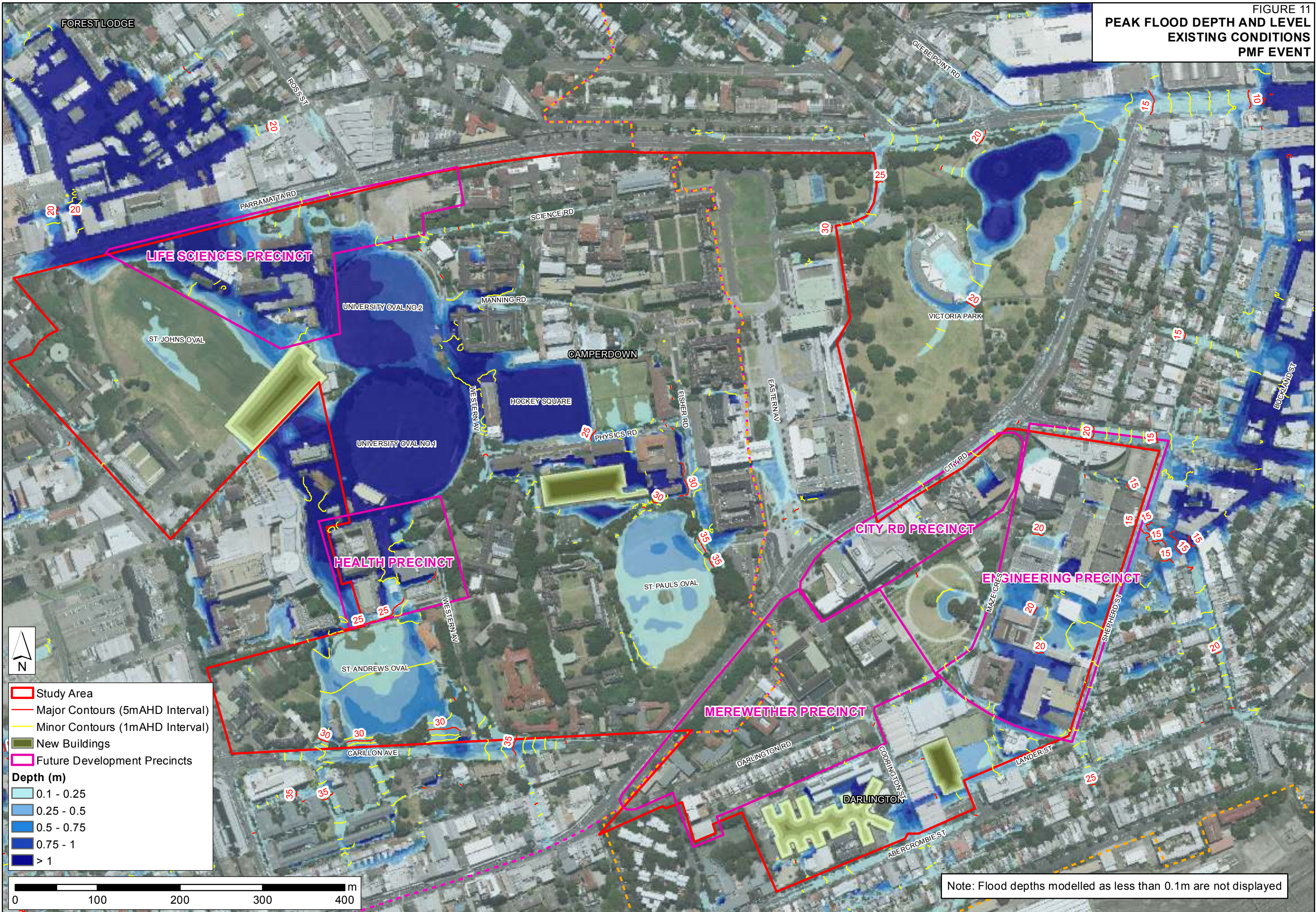
Depth (m)

- 0.1 - 0.25
- 0.25 - 0.5
- 0.5 - 0.75
- 0.75 - 1
- > 1



Note: Flood depths modelled as less than 0.1m are not displayed

FIGURE 11
PEAK FLOOD DEPTH AND LEVEL
EXISTING CONDITIONS
PMF EVENT



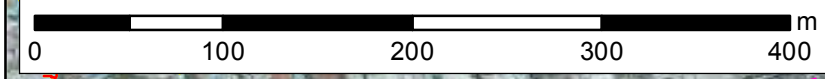
J:\Jobs\113039\GIS\ArcMaps\Draft_Report_Figs\Figure11_Peak_Flood_Depth_and_Level_PMF_Event.mxd

Study Area

- Study Area
- Major Contours (5m AHD Interval)
- Minor Contours (1m AHD Interval)
- New Buildings
- Future Development Precincts

Depth (m)

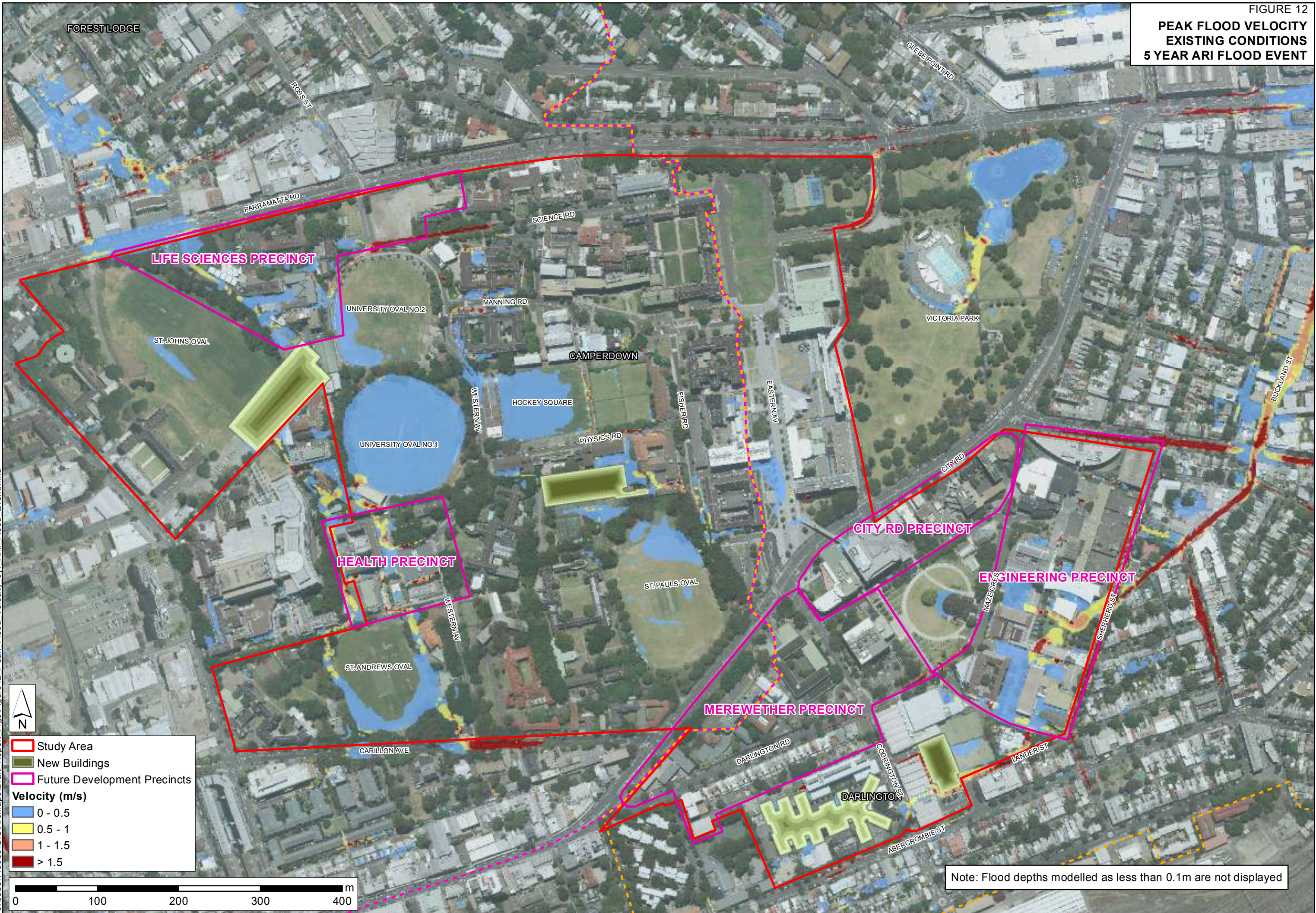
- 0.1 - 0.25
- 0.25 - 0.5
- 0.5 - 0.75
- 0.75 - 1
- > 1



Note: Flood depths modelled as less than 0.1m are not displayed

FIGURE 12

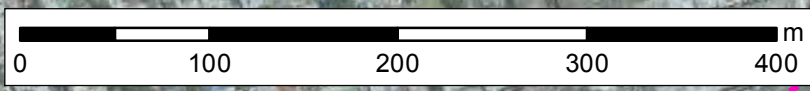
**PEAK FLOOD VELOCITY
EXISTING CONDITIONS
5 YEAR ARI FLOOD EVENT**



J:\Jobs\113039\GIS\ArcMaps\Draft_Report_Figs\Figure12_Peak_Flood_Velocity_5yr_ARI_Flood_Event.mxd

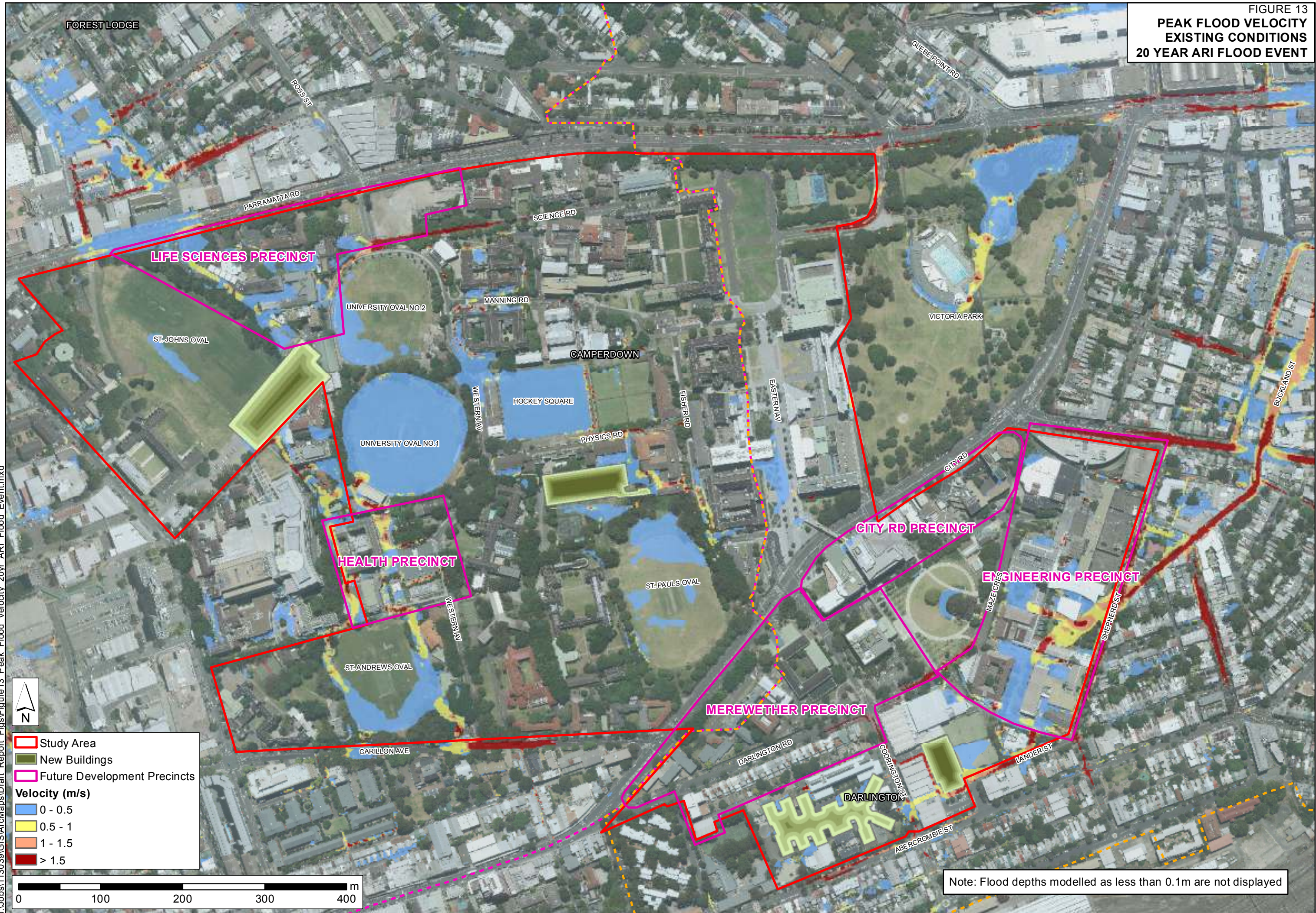


- Study Area
 - New Buildings
 - Future Development Precincts
- Velocity (m/s)**
- 0 - 0.5
 - 0.5 - 1
 - 1 - 1.5
 - > 1.5



Note: Flood depths modelled as less than 0.1m are not displayed

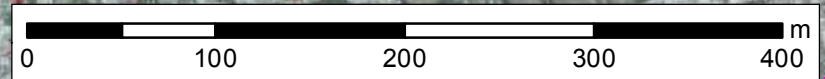
FIGURE 13
**PEAK FLOOD VELOCITY
 EXISTING CONDITIONS
 20 YEAR ARI FLOOD EVENT**



J:\Jobs\113039\GIS\ArcMaps\Draft_Report_Figs\Figure13_Peak_Flood_Velocity_20yr_AR1_Flood_Event.mxd

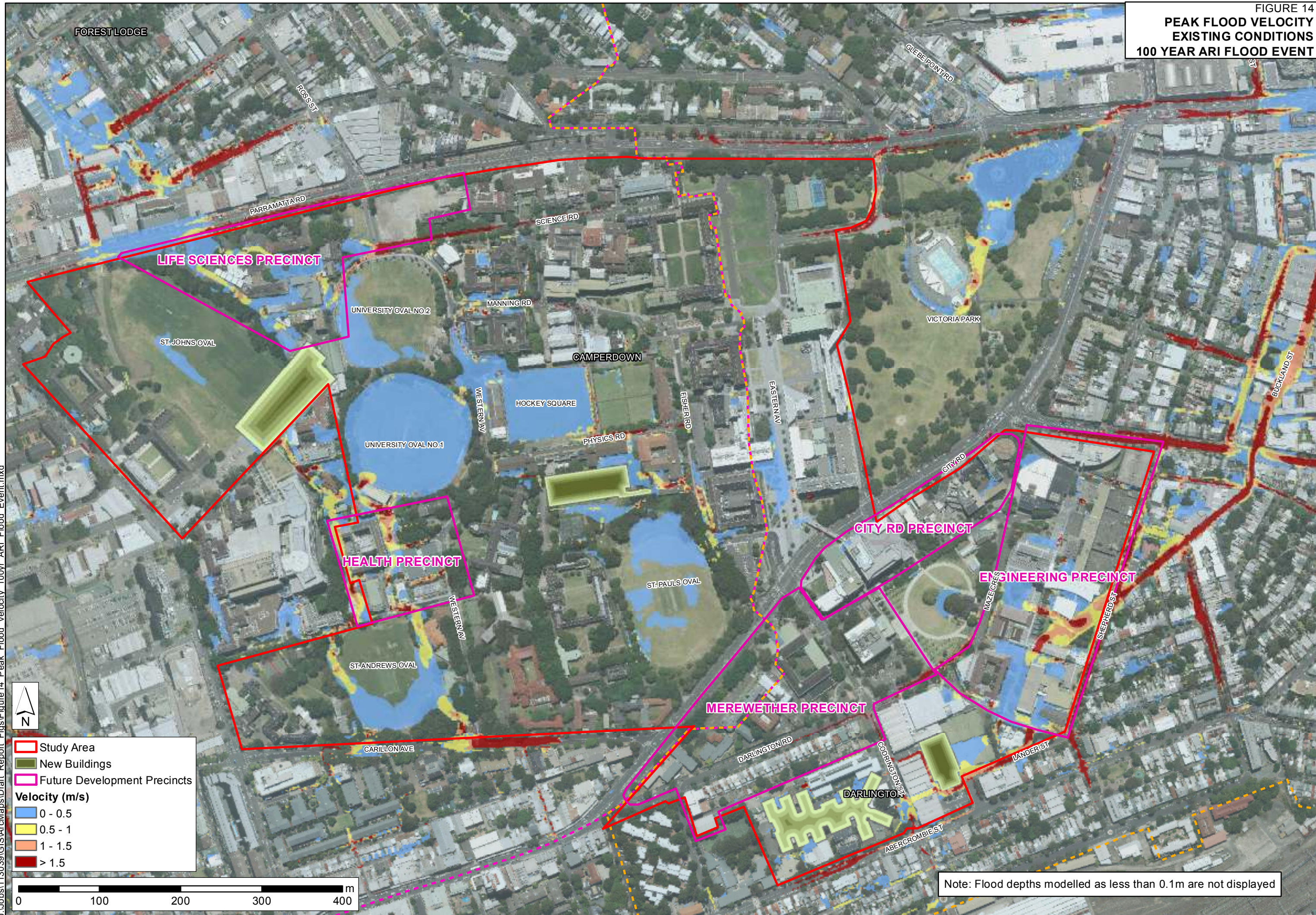


- Study Area
 - New Buildings
 - Future Development Precincts
- Velocity (m/s)**
- 0 - 0.5
 - 0.5 - 1
 - 1 - 1.5
 - > 1.5



Note: Flood depths modelled as less than 0.1m are not displayed

FIGURE 14
**PEAK FLOOD VELOCITY
 EXISTING CONDITIONS
 100 YEAR ARI FLOOD EVENT**



J:\Jobs\113039\GIS\ArcMaps\Draft_Report_Figs\Figure14_Peak_Flood_Velocity_100yr_ARI_Flood_Event.mxd

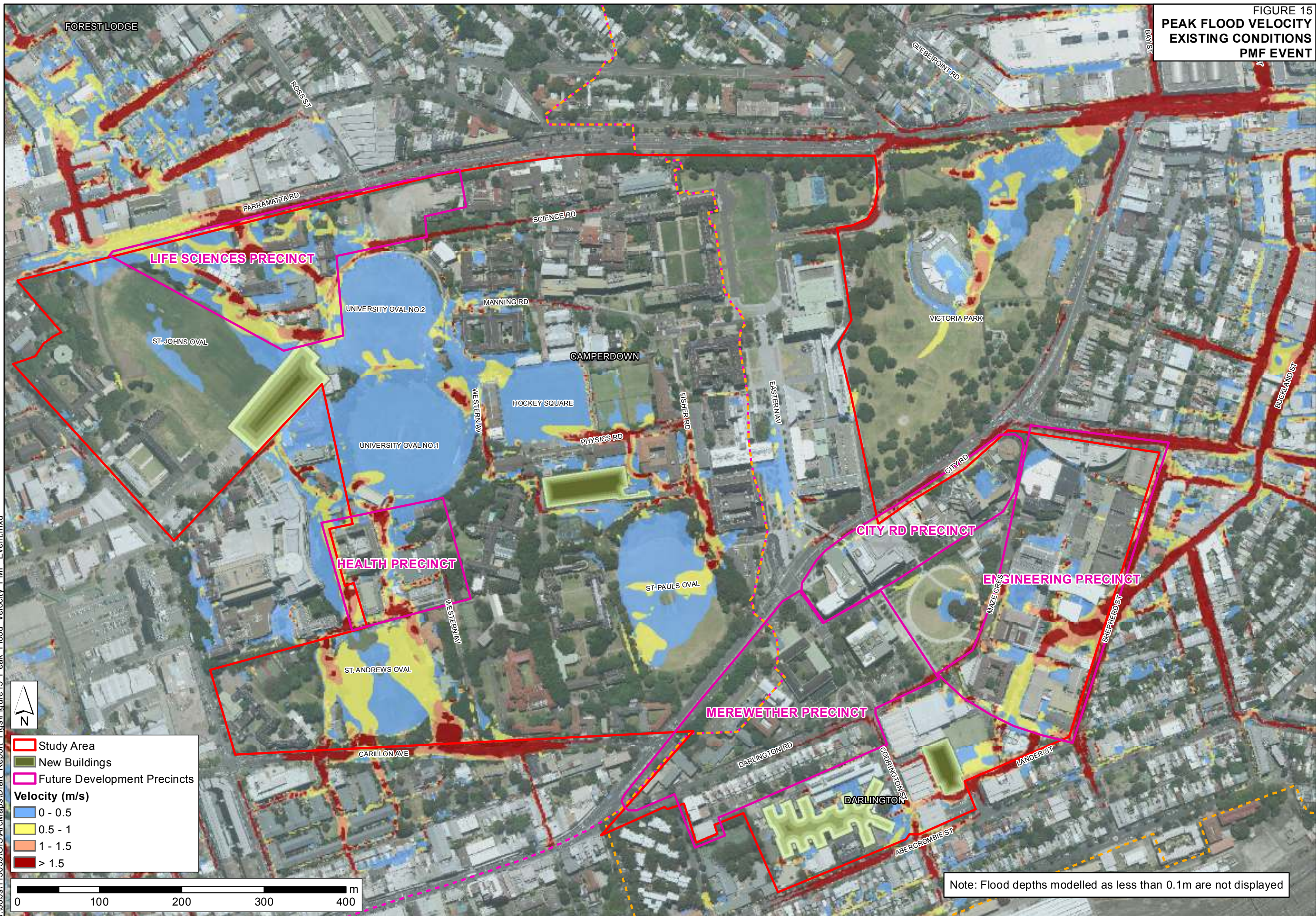


- Study Area
 - New Buildings
 - Future Development Precincts
- Velocity (m/s)**
- 0 - 0.5
 - 0.5 - 1
 - 1 - 1.5
 - > 1.5



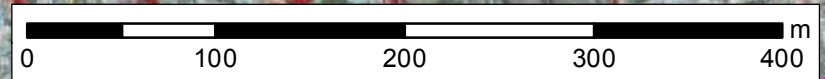
Note: Flood depths modelled as less than 0.1m are not displayed

FIGURE 15
 PEAK FLOOD VELOCITY
 EXISTING CONDITIONS
 PMF EVENT



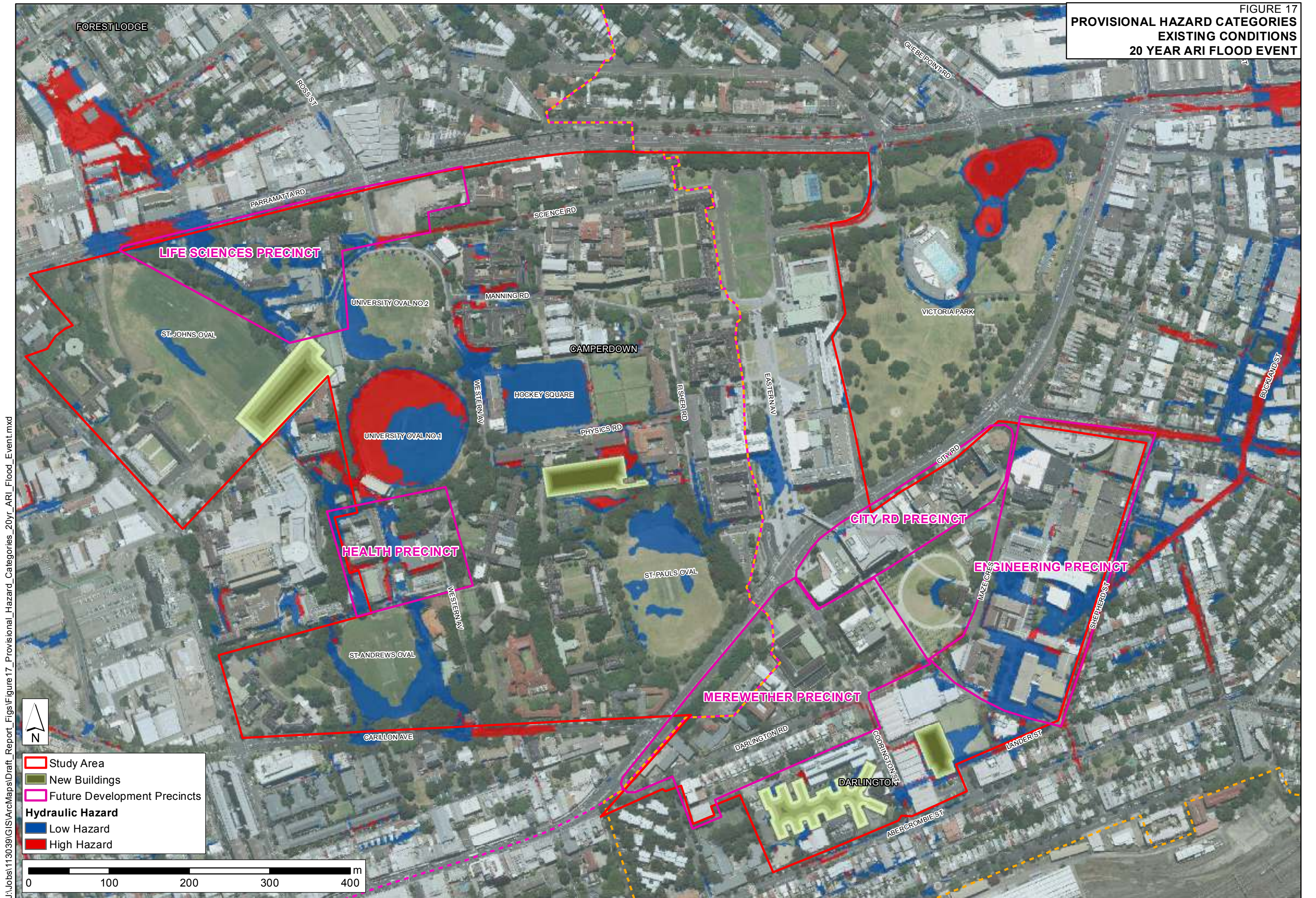
J:\Jobs\113039\GIS\ArcMaps\Draft_Report_Figs\Figure15_Peak_Flood_Velocity_PMF_Event.mxd

Study Area
 New Buildings
 Future Development Precincts
Velocity (m/s)
 0 - 0.5
 0.5 - 1
 1 - 1.5
 > 1.5



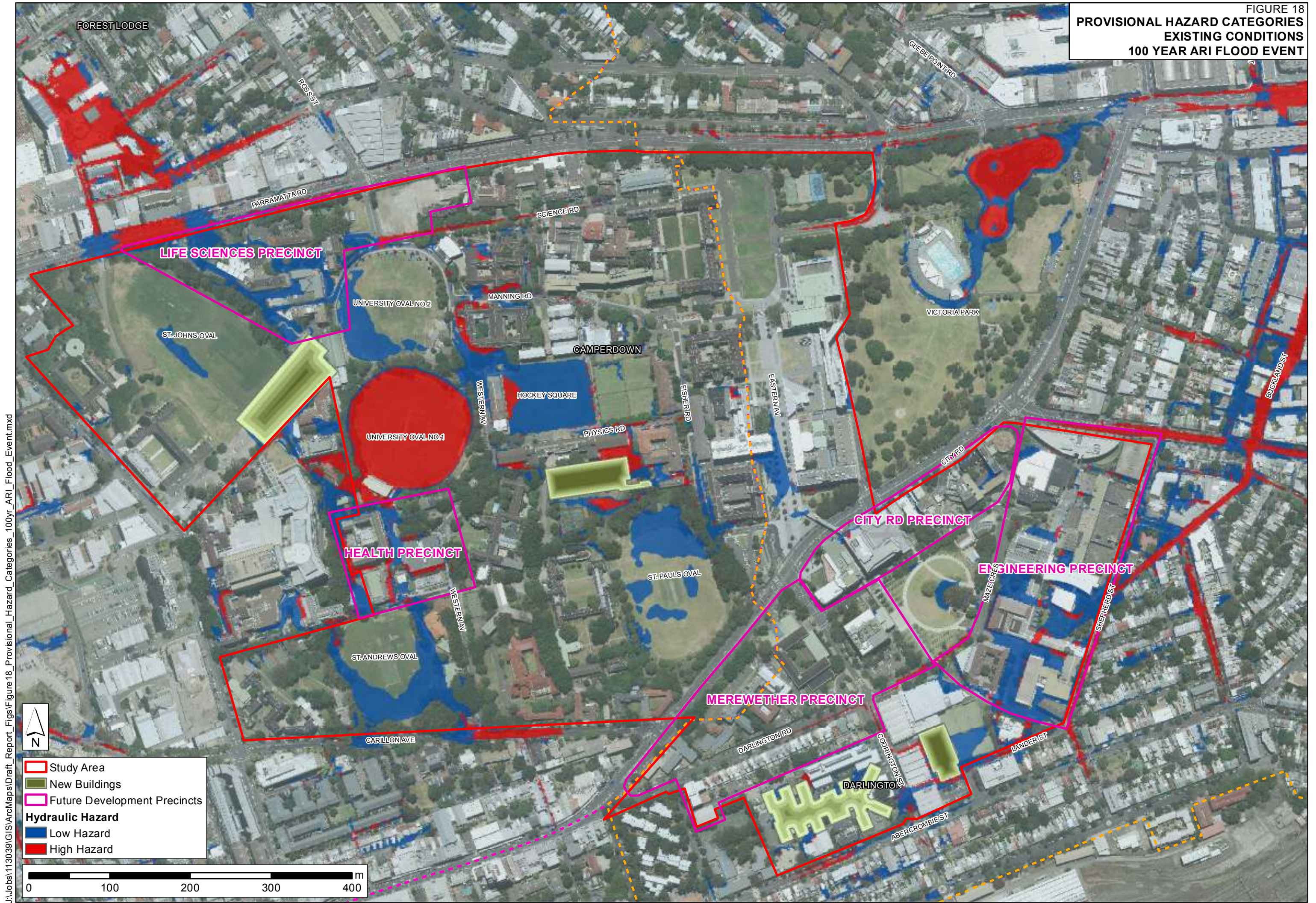
Note: Flood depths modelled as less than 0.1m are not displayed

FIGURE 17
 PROVISIONAL HAZARD CATEGORIES
 EXISTING CONDITIONS
 20 YEAR ARI FLOOD EVENT



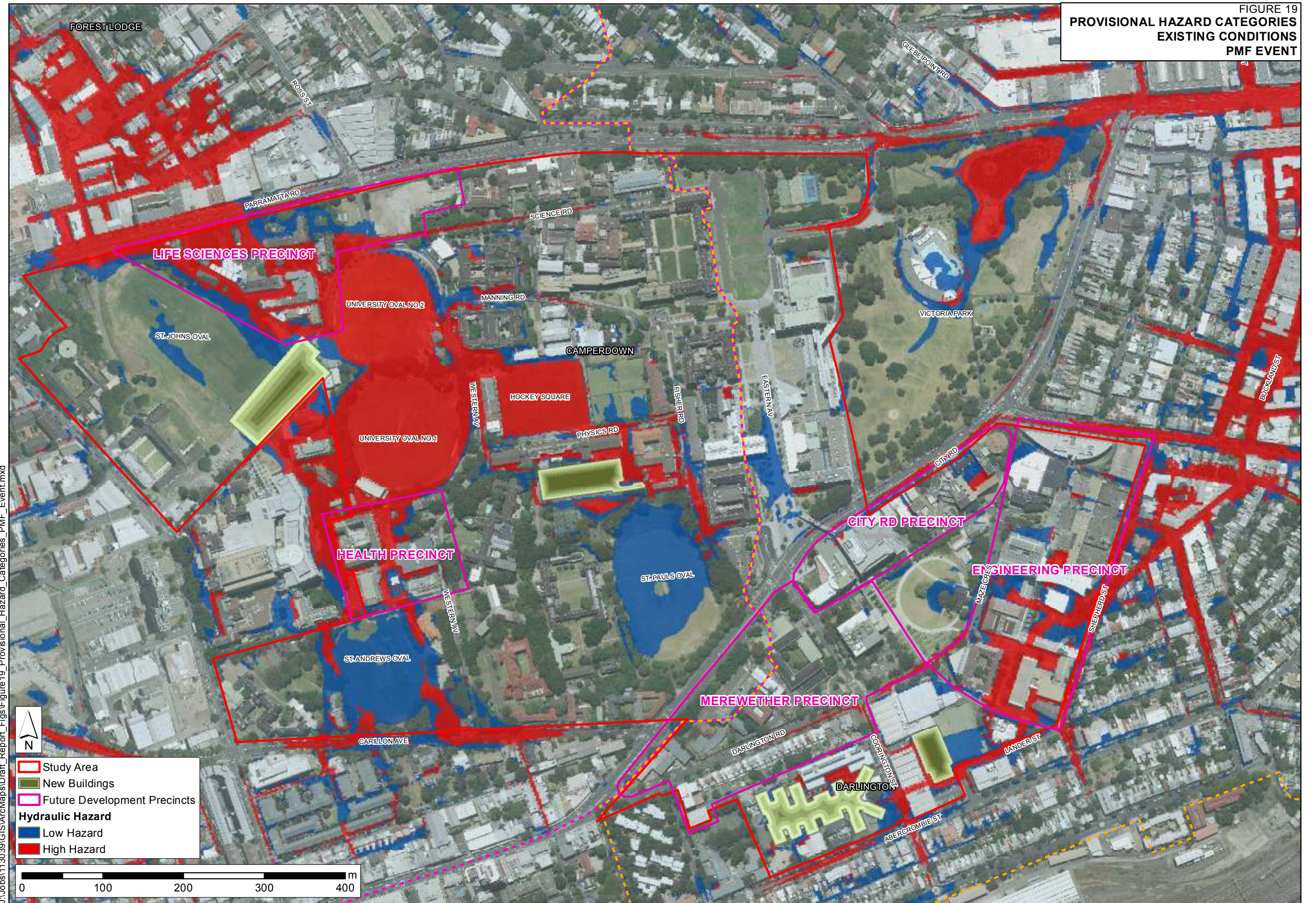
J:\Jobs\113039\GIS\ArcMaps\Draft_Report_Figs\Figure 17_Provisional_Hazard_Categories_20yr_AR1_Flood_Event.mxd

PROVISIONAL HAZARD CATEGORIES
EXISTING CONDITIONS
100 YEAR ARI FLOOD EVENT



J:\Jobs\113039\GIS\ArcMaps\Draft_Report_Figs\Figure 18_Provisional_Hazard_Categories_100yr_AR1_Flood_Event.mxd

FIGURE 19
 PROVISIONAL HAZARD CATEGORIES
 EXISTING CONDITIONS
 PMF EVENT



J:\Jobs\113039\GIS\ArcMaps\Draft_Report_Figs\Figure 19_Provisional_Hazard_Categories_PMF_Event.mxd


 Study Area
 New Buildings
 Future Development Precincts
Hydraulic Hazard
 Low Hazard
 High Hazard

