



SICEEP-Bullecourt 913 EXISTING



SICEEP-Bullecourt 913



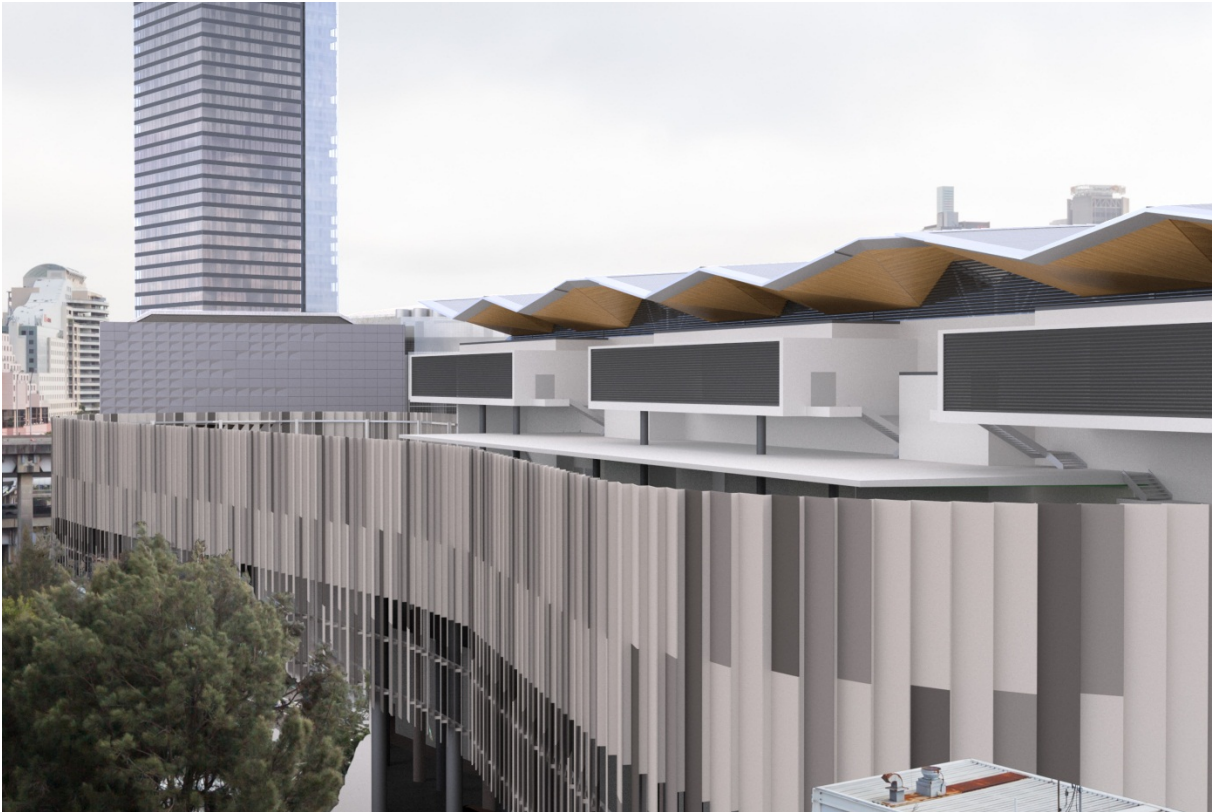
SICEEP-Bullecourt 406 EXISTING



SICEEP-Bullecourt 406



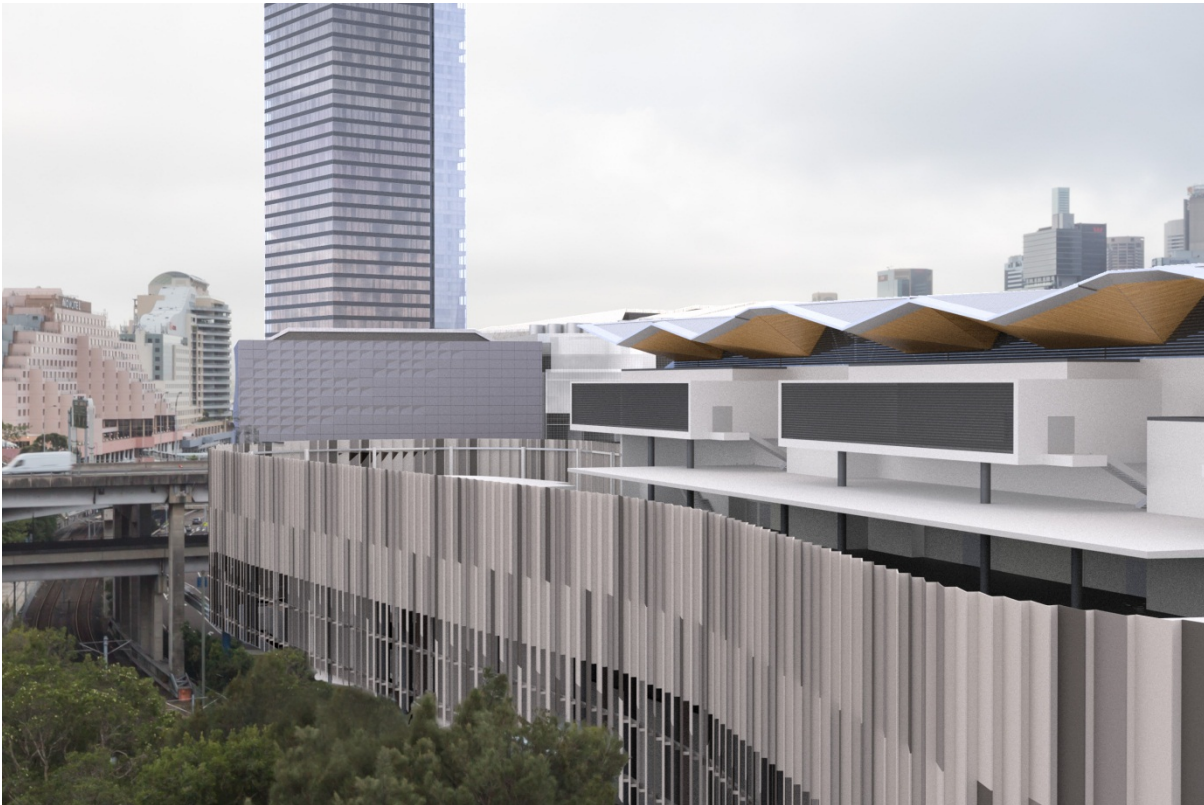
SICEEP-Bullecourt 805 EXISTING



SICEEP-Bullecourt 805



SICEP-Bullecourt 906 EXISTING



SICEP-Bullecourt 906



SICEP-Bullecourt 913 EXISTING



SICEP-Bullecourt 913

Appendix 2

TAB 6 – THE PEAK

Peak Apartments

Position: P1A
Level: 45
RL: 140.975 (Camera Height)

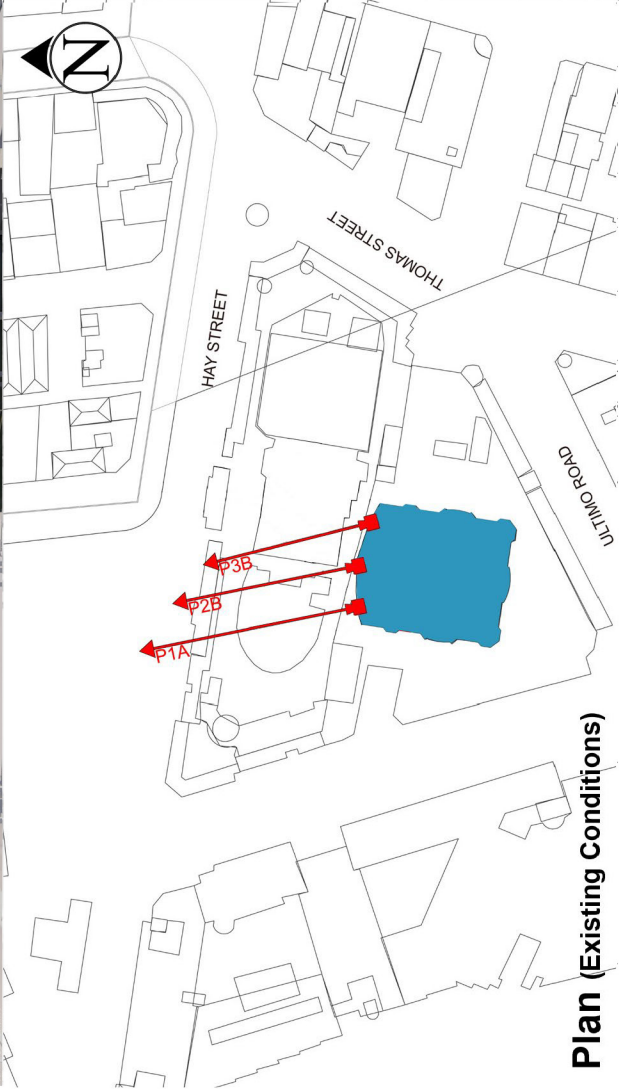
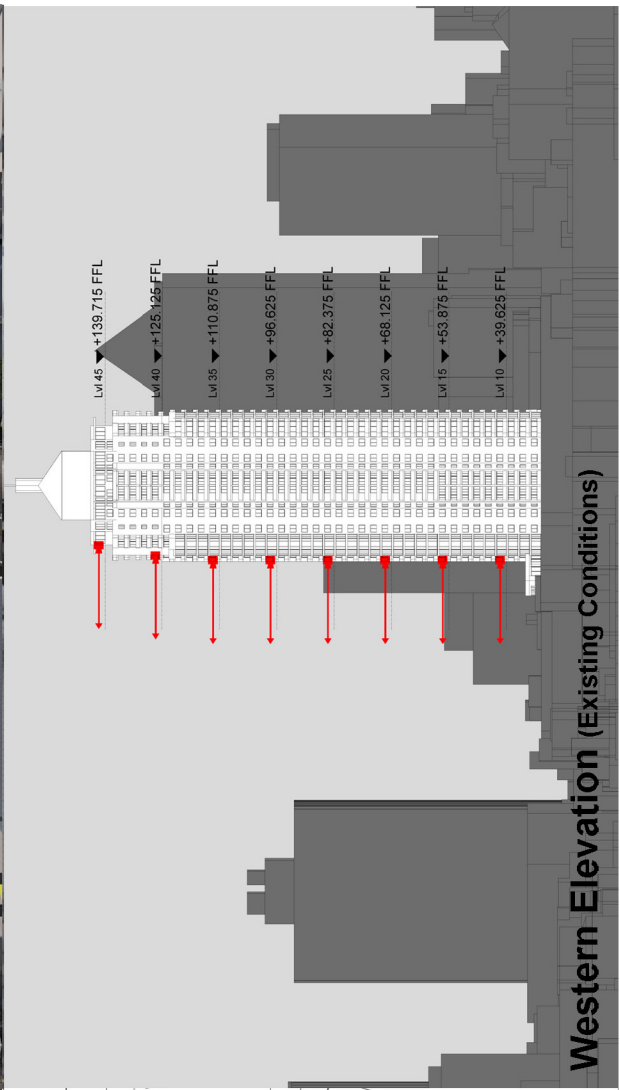
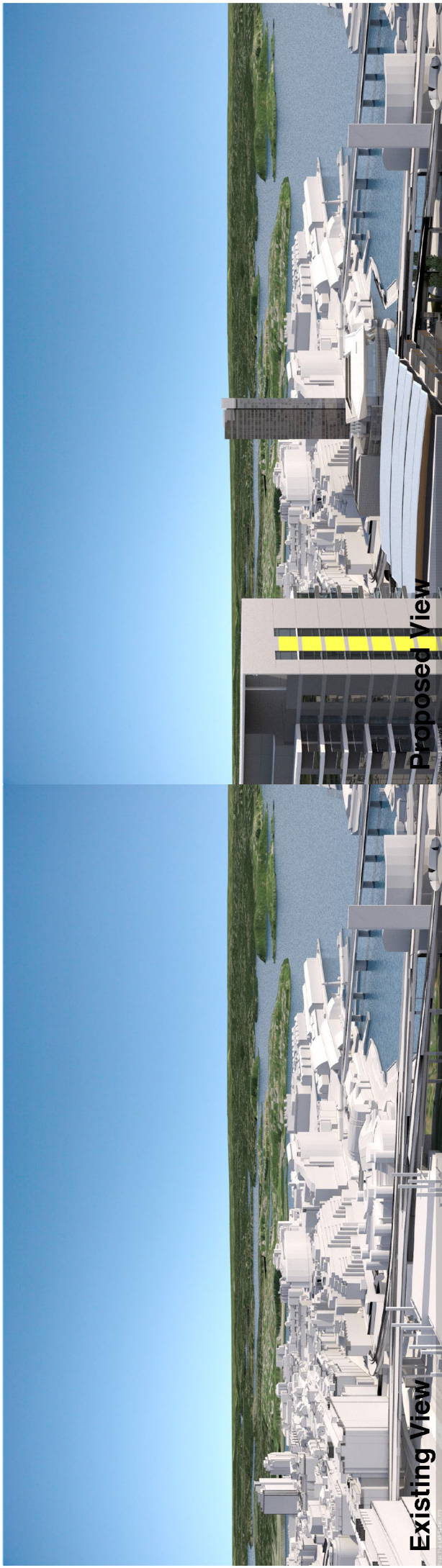
FOR INFORMATION ONLY

Illustrative designs of built forms in the Haymarket precinct do not form part of this development application (and will be the subject of separate development assessment processes) and is shown for information and broader illustrative purposes. These images are produced here for view analysis purposes only.

1

LEGEND:

- Key Building
- View Direction (50mm Camera)
- Building envelope in the Haymarket Precinct (Subject of separate DA)



Plan (Existing Conditions)

Western Elevation (Existing Conditions)