

Peak Apartments

Position: P2B




Level: 40

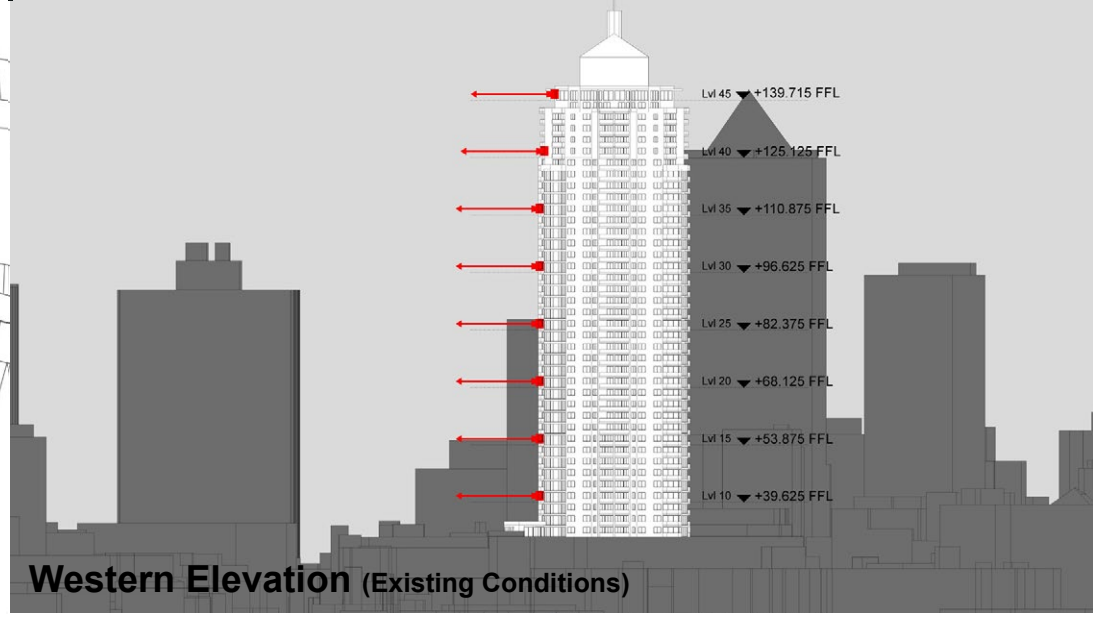
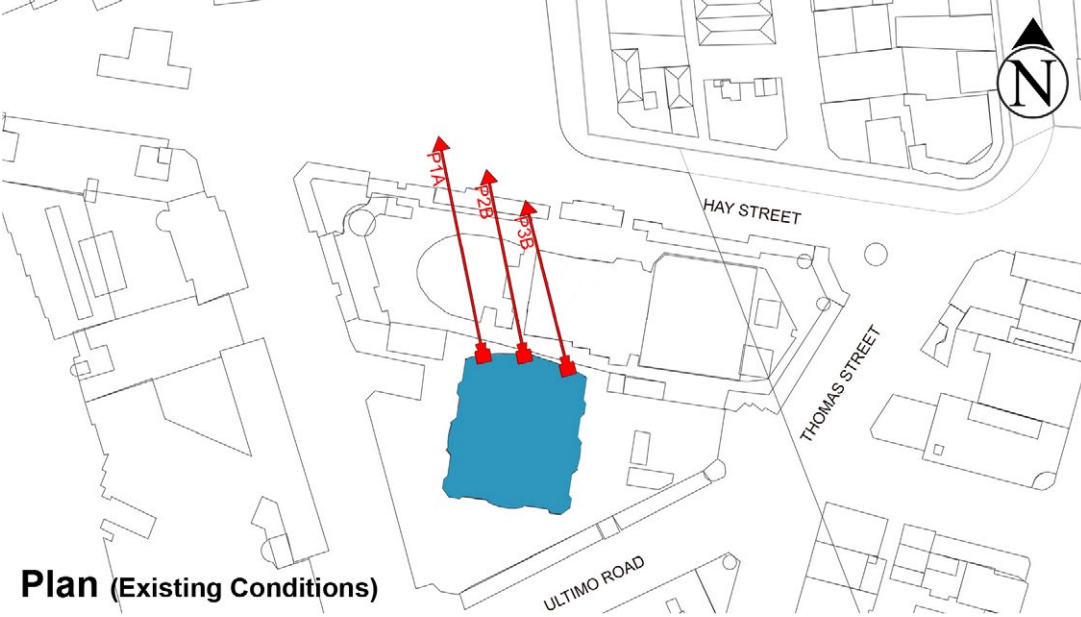
RL: 126.725 (Camera Height)

FOR INFORMATION ONLY

Illustrative designs of built forms in the Haymarket precinct do not form part of this development application (and will be the subject of separate development assessment processes) and is shown for information and broader illustrative purposes. These images are produced here for view analysis purposes only.

LEGEND: 10

-  Key Building
-  View Direction (50mm Camera)
-  Building envelope in the Haymarket Precinct (Subject of separate DA)



Peak Apartments

Position: P2B




Level: 35

RL: 112.475 (Camera Height)

FOR INFORMATION ONLY

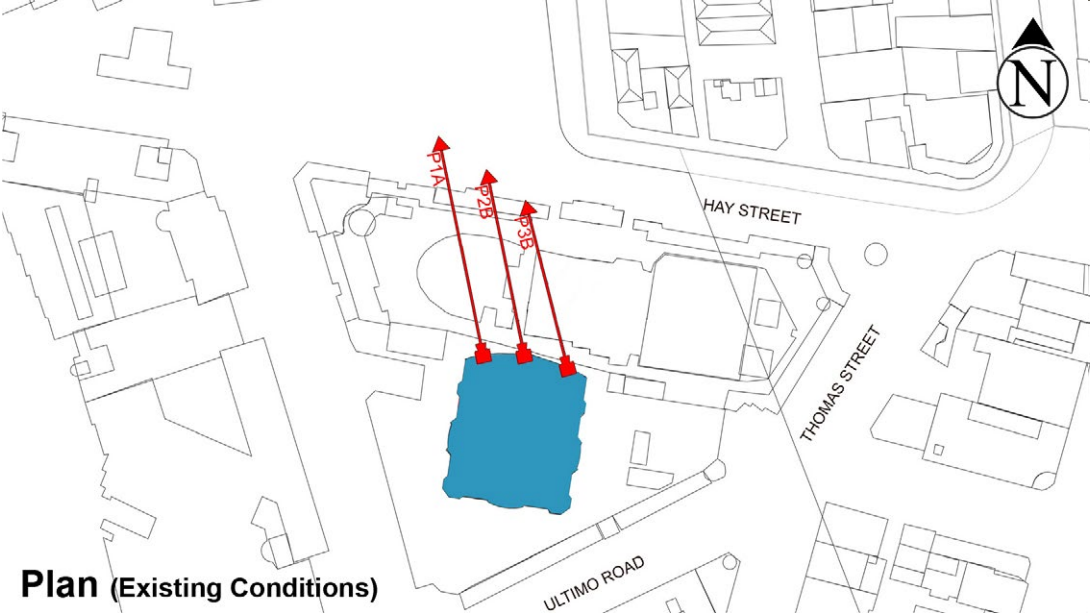
Illustrative designs of built forms in the Haymarket precinct do not form part of this development application (and will be the subject of separate development assessment processes) and is shown for information and broader illustrative purposes. These images are produced here for view analysis purposes only.

LEGEND: 11

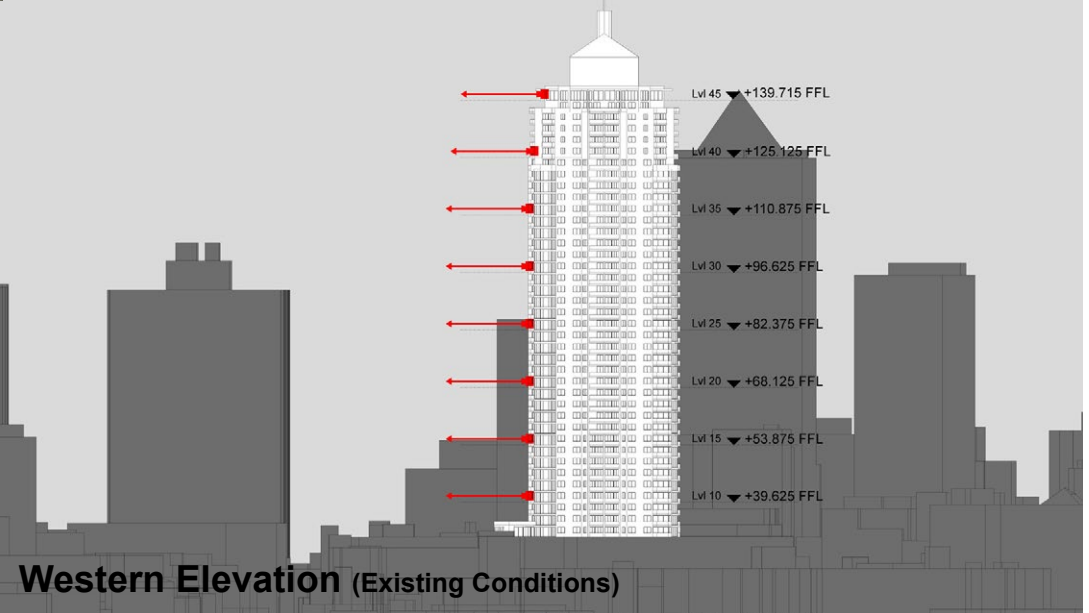
-  Key Building
-  View Direction (50mm Camera)
-  Building envelope in the Haymarket Precinct (Subject of separate DA)



Existing View



Plan (Existing Conditions)



Western Elevation (Existing Conditions)

Peak Apartments

Position: P2B

Level: 30

RL: 98.225 (Camera Height)

FOR INFORMATION ONLY

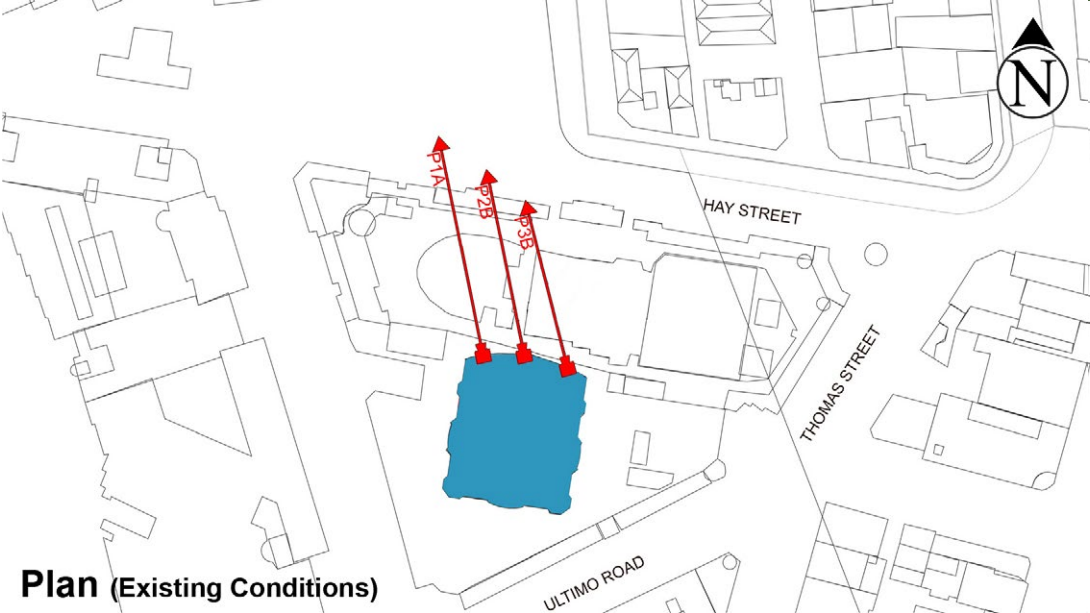
Illustrative designs of built forms in the Haymarket precinct do not form part of this development application (and will be the subject of separate development assessment processes) and is shown for information and broader illustrative purposes. These images are produced here for view analysis purposes only.

LEGEND: 12

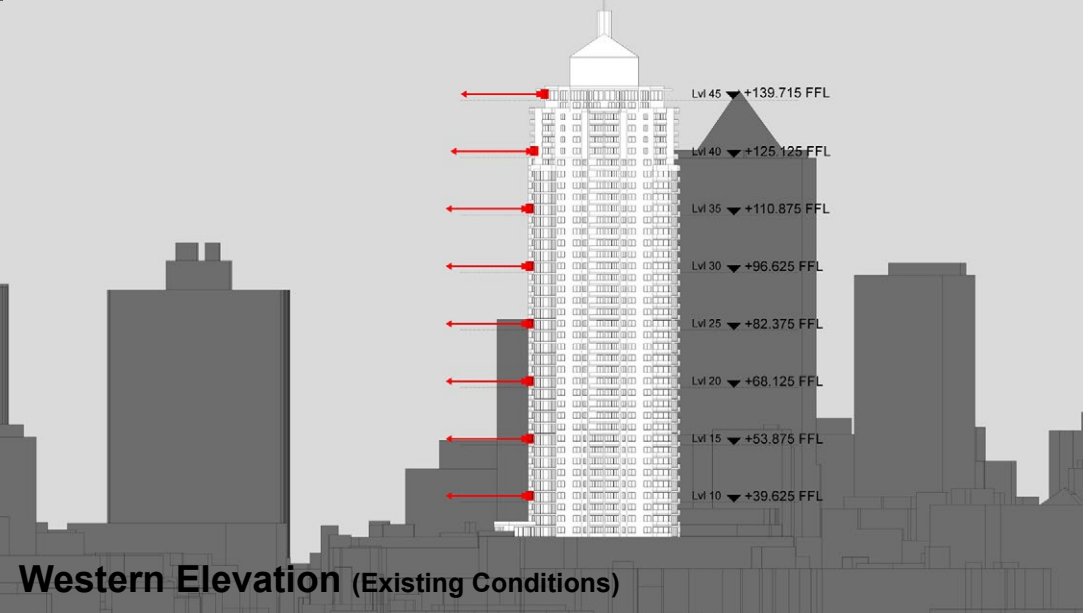
- Key Building
- ← View Direction (50mm Camera)
- Building envelope in the Haymarket Precinct (Subject of separate DA)



Existing View



Plan (Existing Conditions)



Western Elevation (Existing Conditions)

Peak Apartments

Position: P2B




Level: 25

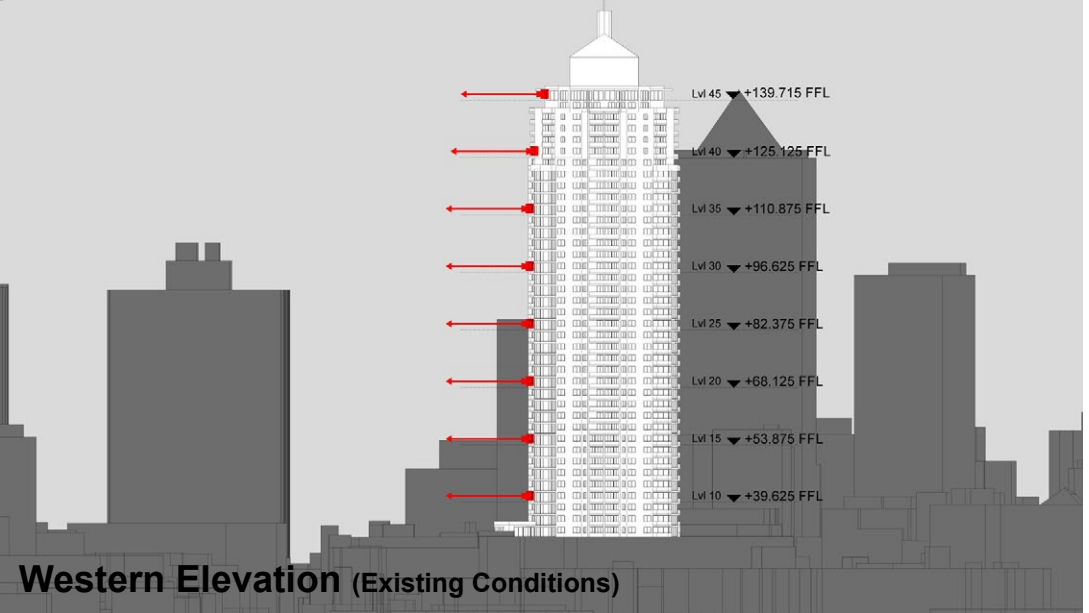
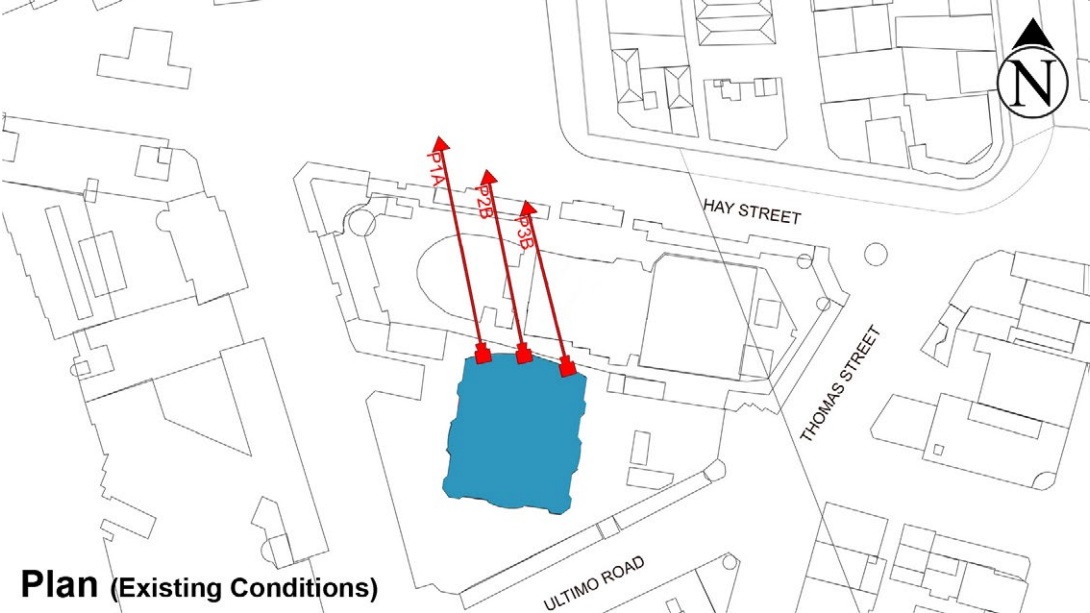
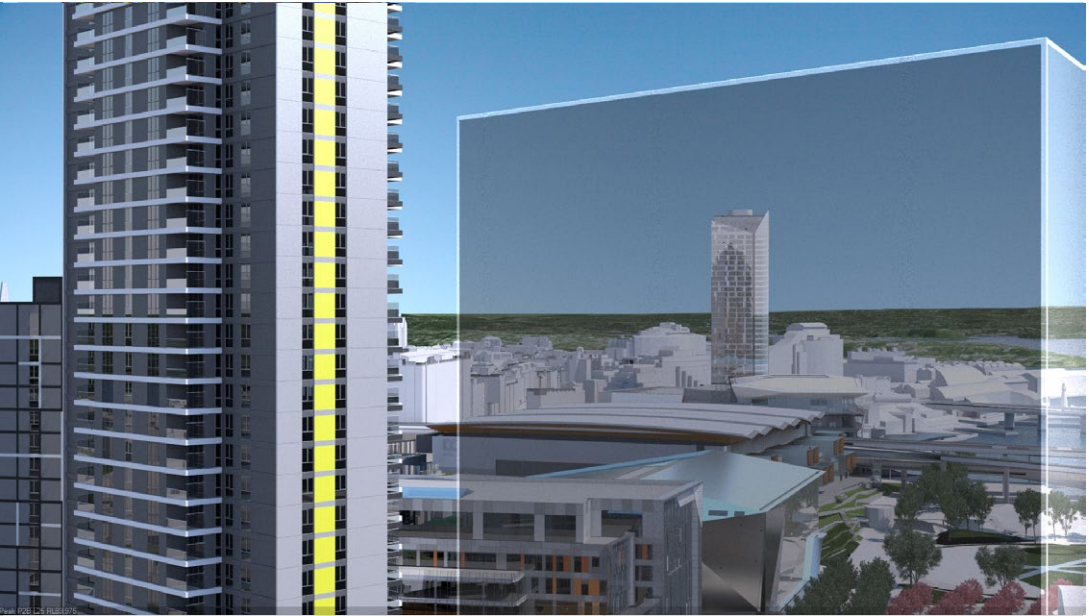
RL: 83.975 (Camera Height)

FOR INFORMATION ONLY

Illustrative designs of built forms in the Haymarket precinct do not form part of this development application (and will be the subject of separate development assessment processes) and is shown for information and broader illustrative purposes. These images are produced here for view analysis purposes only.

LEGEND: 13

-  Key Building
-  View Direction (50mm Camera)
-  Building envelope in the Haymarket Precinct (Subject of separate DA)



Peak Apartments

Position: P2B

Level: 20

RL: 69.725 (Camera Height)

FOR INFORMATION ONLY

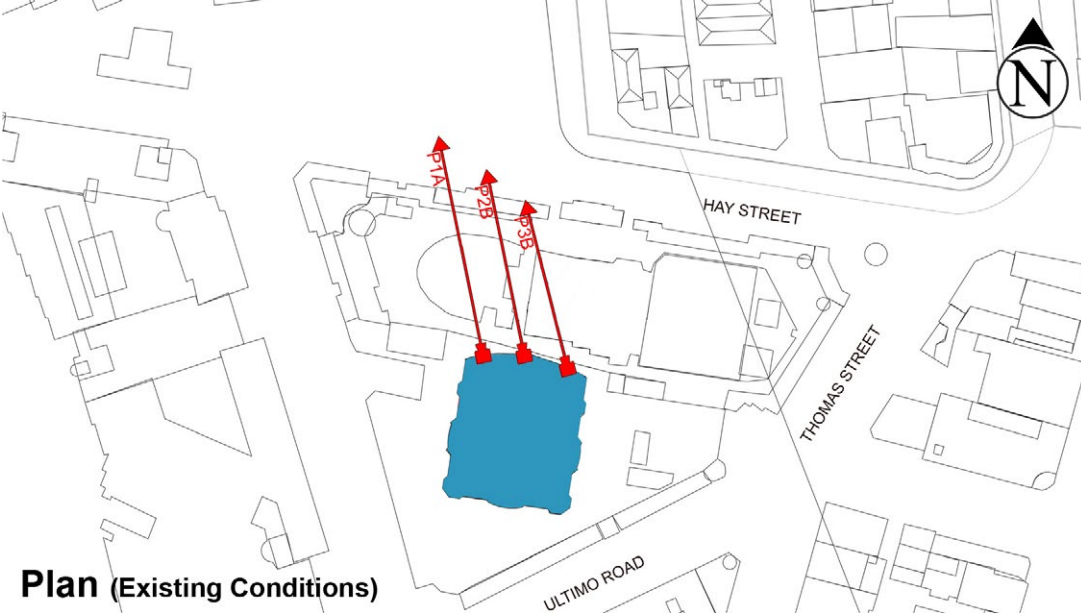
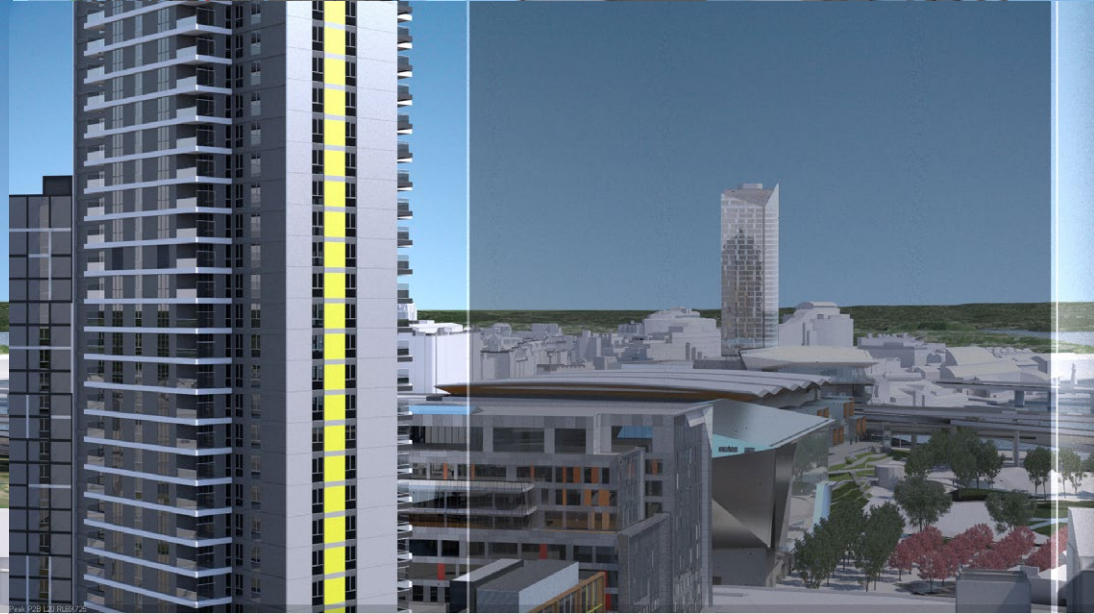
Illustrative designs of built forms in the Haymarket precinct do not form part of this development application (and will be the subject of separate development assessment processes) and is shown for information and broader illustrative purposes. These images are produced here for view analysis purposes only.

LEGEND: 14

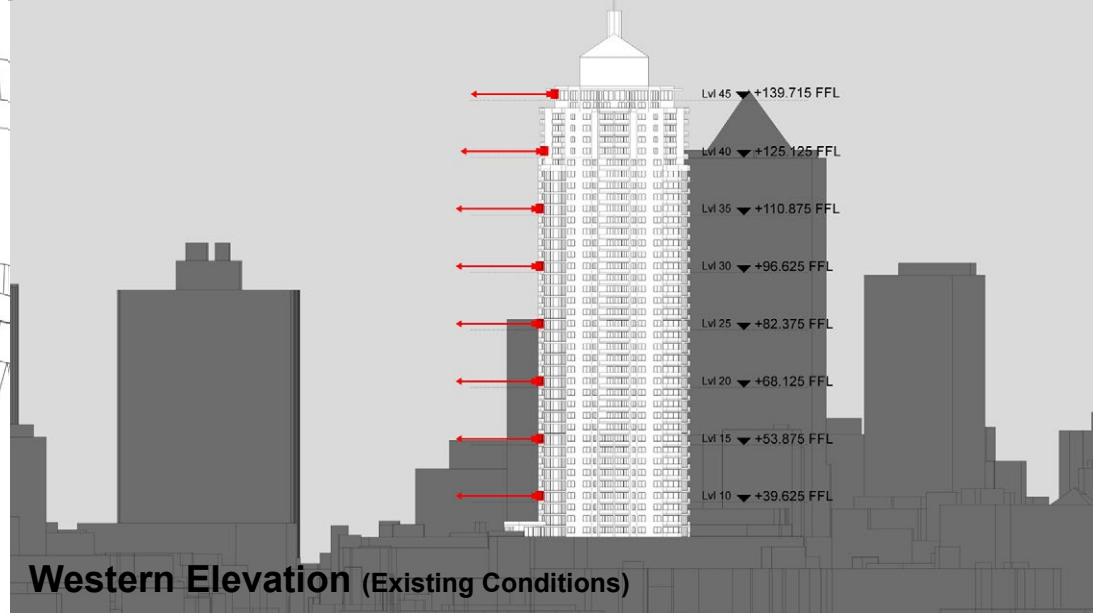
- Key Building
- ← View Direction (50mm Camera)
- Building envelope in the Haymarket Precinct (Subject of separate DA)



Existing View



Plan (Existing Conditions)



Western Elevation (Existing Conditions)

Peak Apartments

Position: P2B

Level: 15

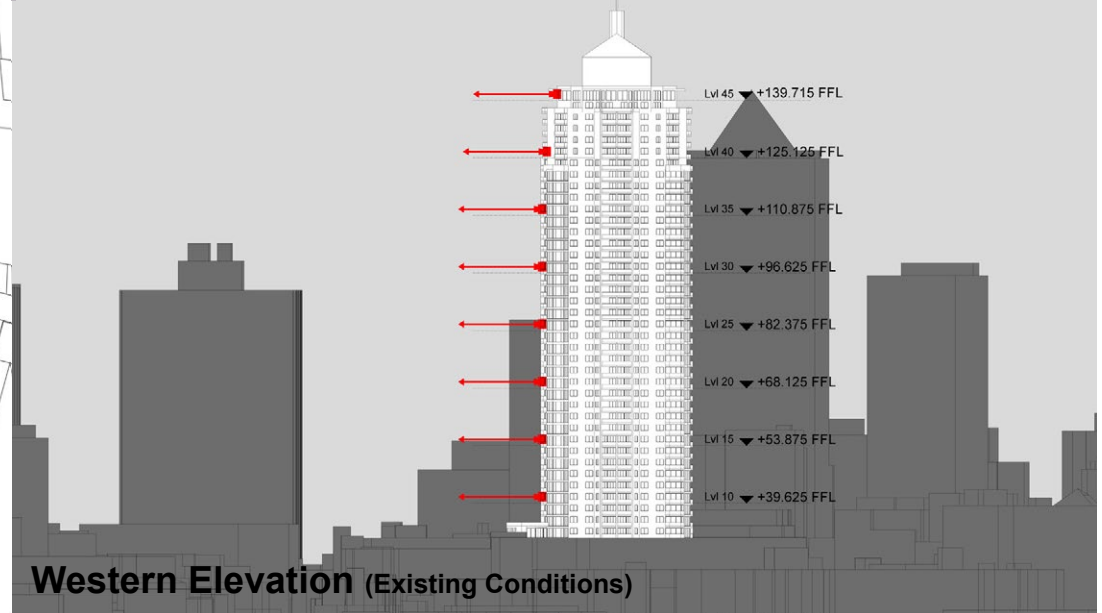
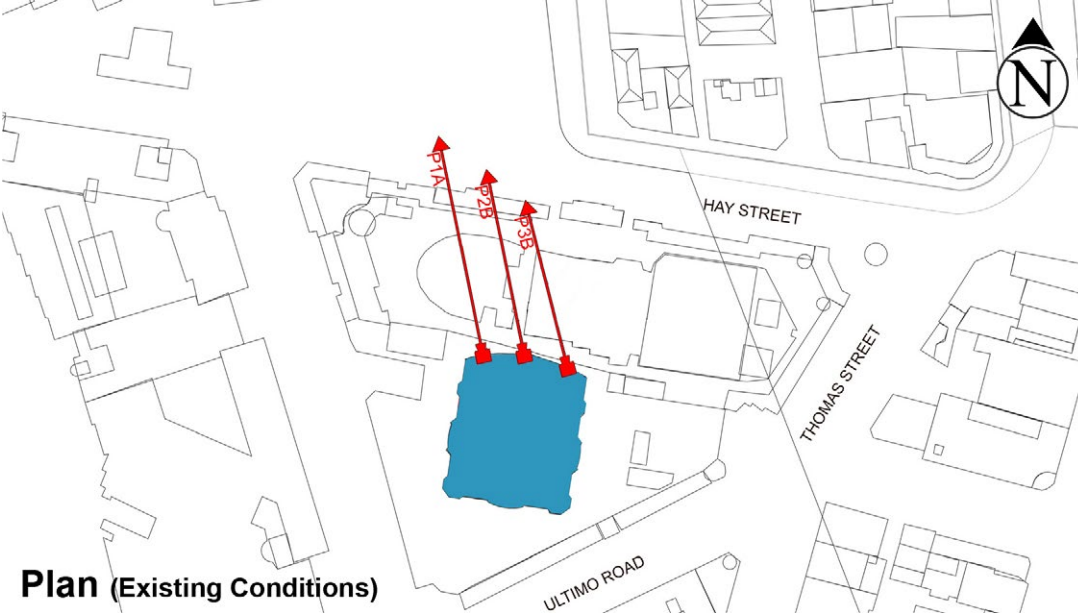
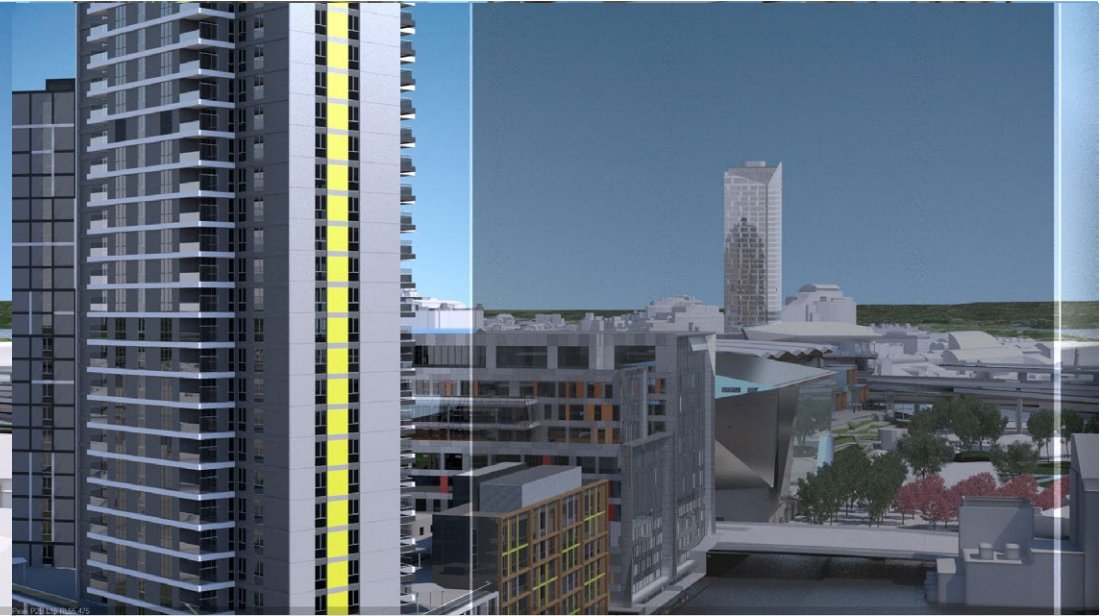
RL: 55.475 (Camera Height)

FOR INFORMATION ONLY

Illustrative designs of built forms in the Haymarket precinct do not form part of this development application (and will be the subject of separate development assessment processes) and is shown for information and broader illustrative purposes. These images are produced here for view analysis purposes only.

LEGEND: 15

- Key Building
- ← View Direction (50mm Camera)
- Building envelope in the Haymarket Precinct (Subject of separate DA)



Peak Apartments





Position: P2B

Level: 10

RL: 41.225 (Camera Height)

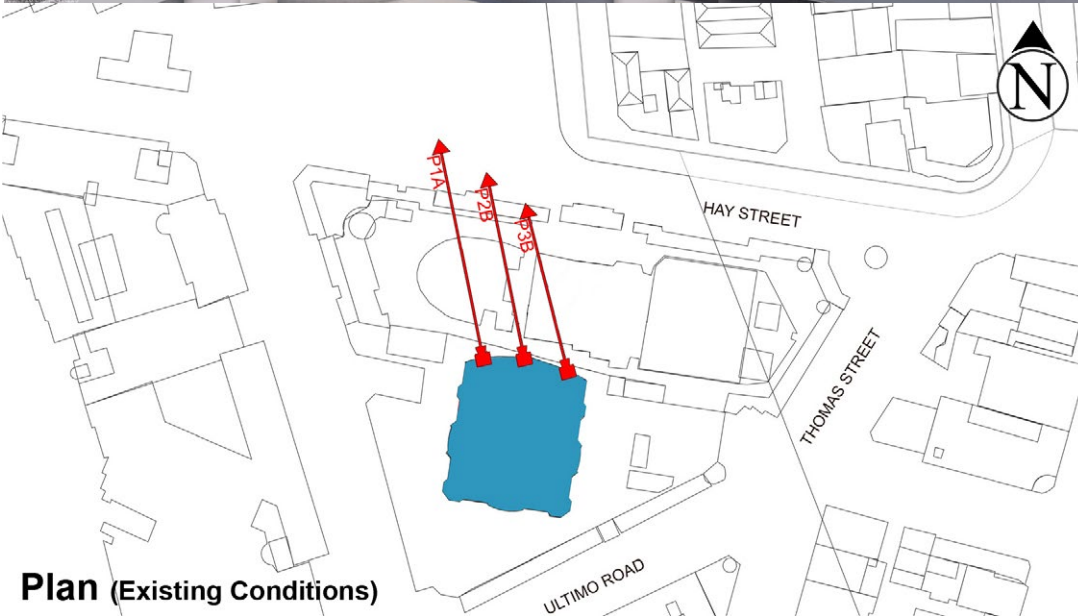
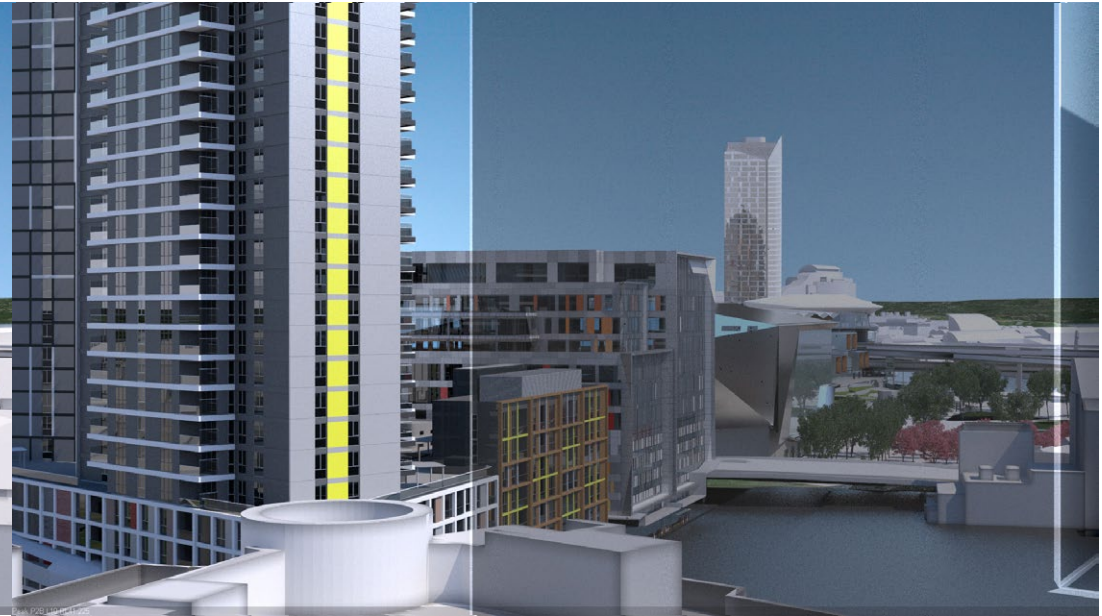
FOR INFORMATION ONLY

Illustrative designs of built forms in the Haymarket precinct do not form part of this development application (and will be the subject of separate development assessment processes) and is shown for information and broader illustrative purposes. These images are produced here for view analysis purposes only.

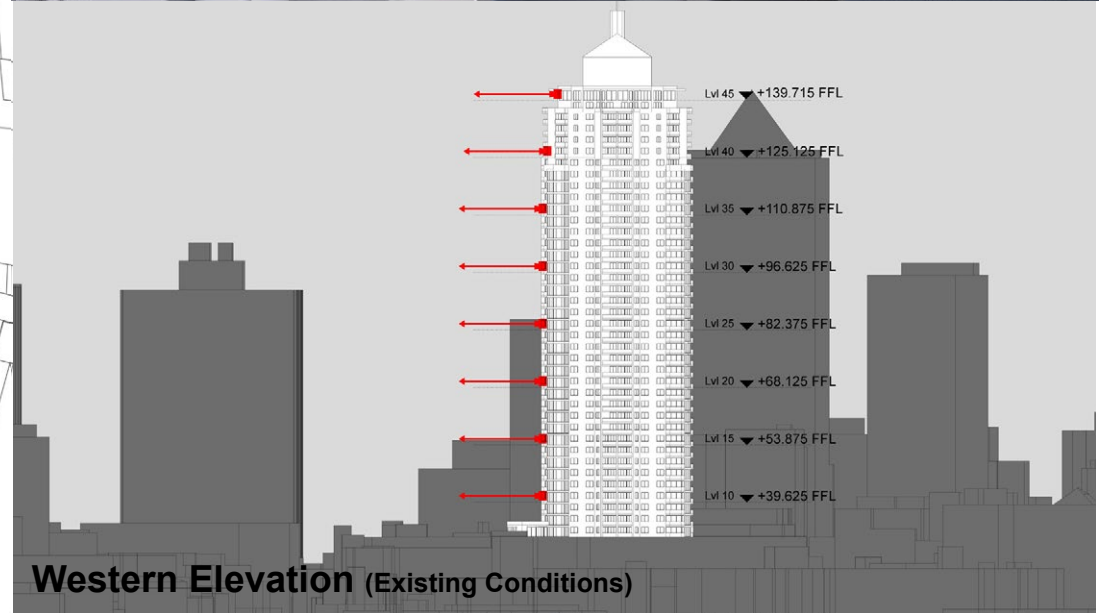
	LEGEND:	16
	Key Building	
	View Direction (50mm Camera)	
	Building envelope in the Haymarket Precinct (Subject of separate DA)	



Existing View



Plan (Existing Conditions)



Western Elevation (Existing Conditions)

Peak Apartments

Position: P3B




Level: 45

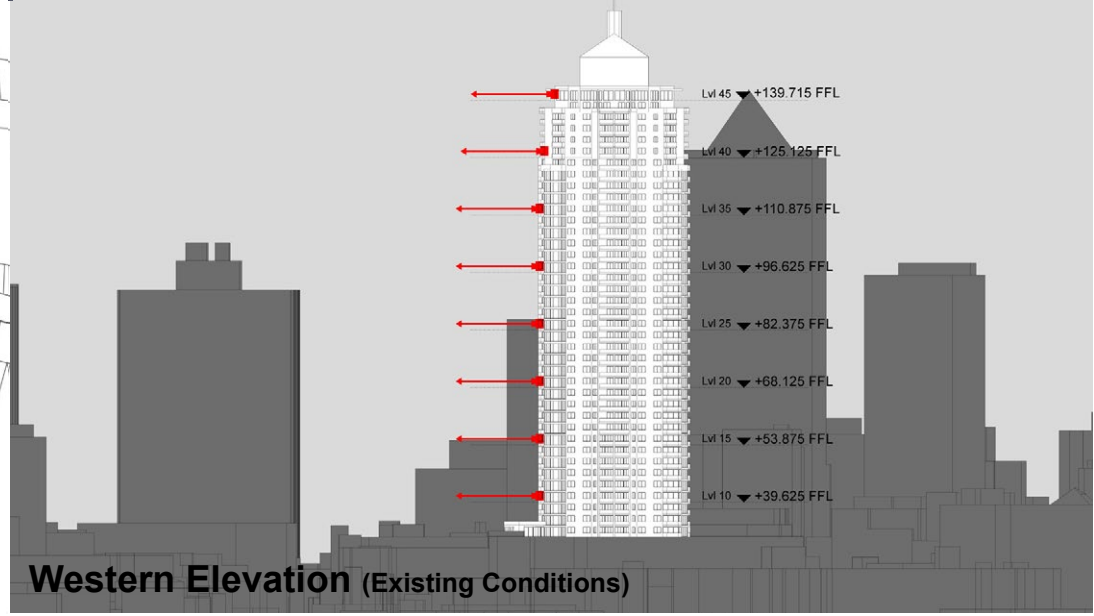
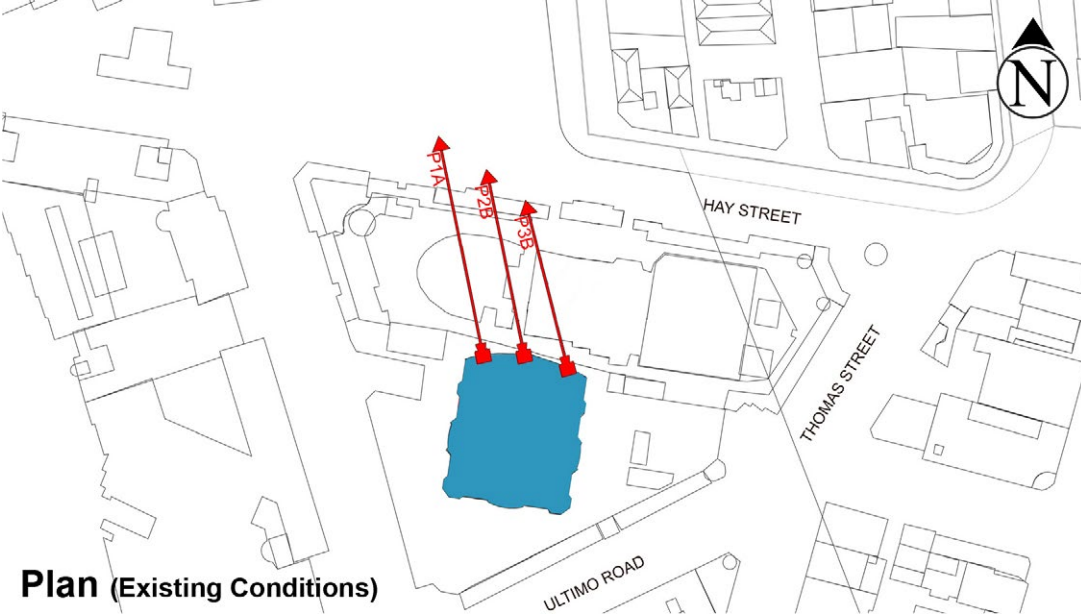
RL: 140.975 (Camera Height)

FOR INFORMATION ONLY

Illustrative designs of built forms in the Haymarket precinct do not form part of this development application (and will be the subject of separate development assessment processes) and is shown for information and broader illustrative purposes. These images are produced here for view analysis purposes only.

LEGEND: 17

-  Key Building
-  View Direction (50mm Camera)
-  Building envelope in the Haymarket Precinct (Subject of separate DA)



Peak Apartments

Position: P3B




Level: 40

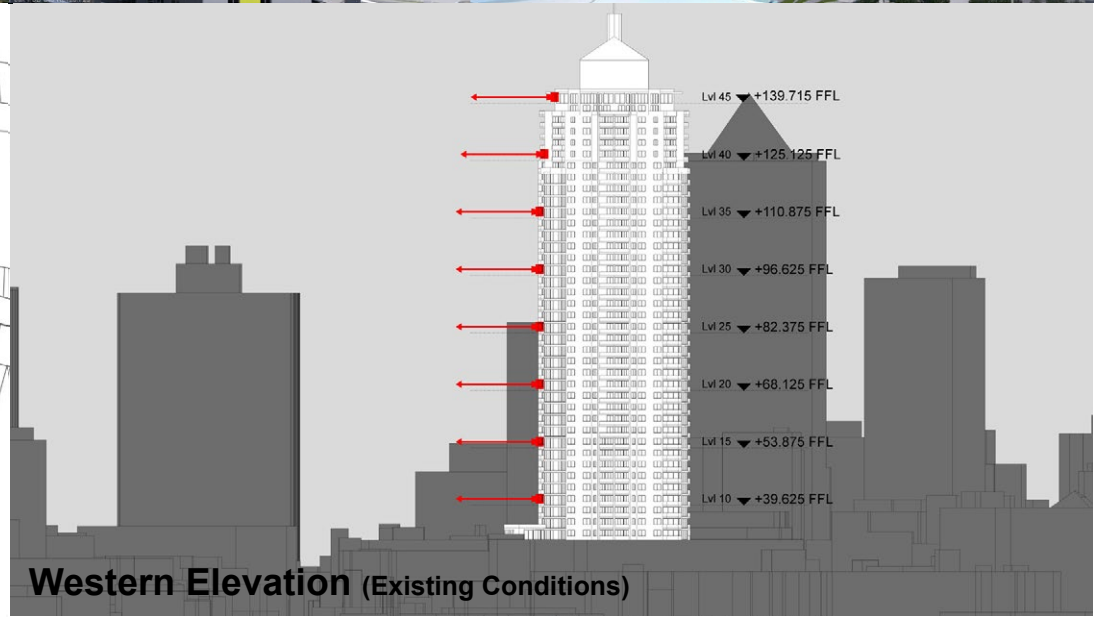
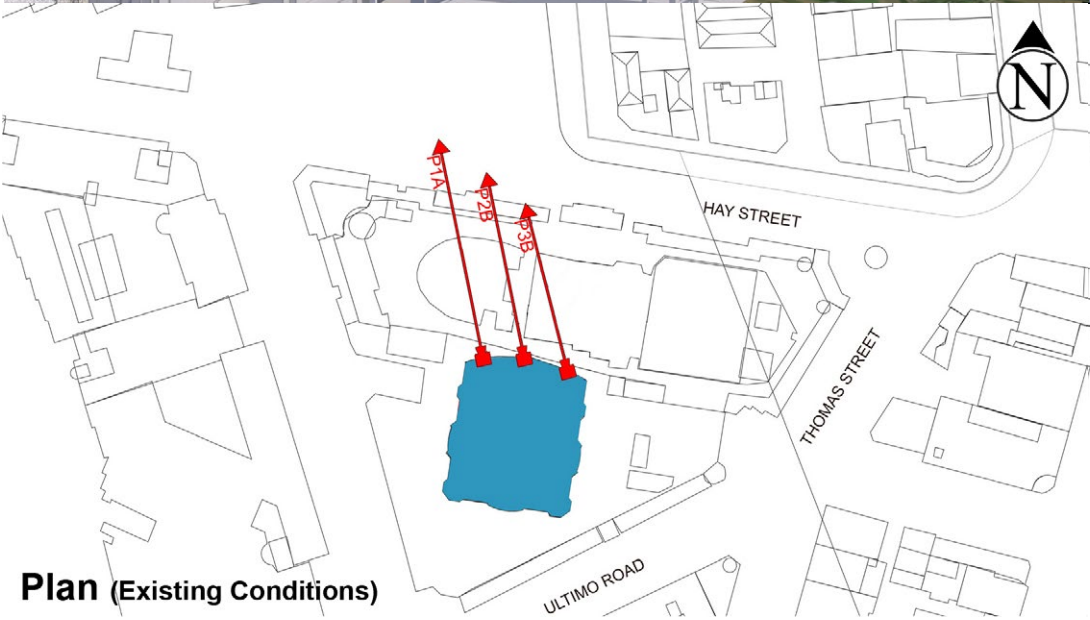
RL: 126.725 (Camera Height)

FOR INFORMATION ONLY

Illustrative designs of built forms in the Haymarket precinct do not form part of this development application (and will be the subject of separate development assessment processes) and is shown for information and broader illustrative purposes. These images are produced here for view analysis purposes only.

LEGEND: 18

-  Key Building
-  View Direction (50mm Camera)
-  Building envelope in the Haymarket Precinct (Subject of separate DA)



Peak Apartments

Position: P3B




Level: 35

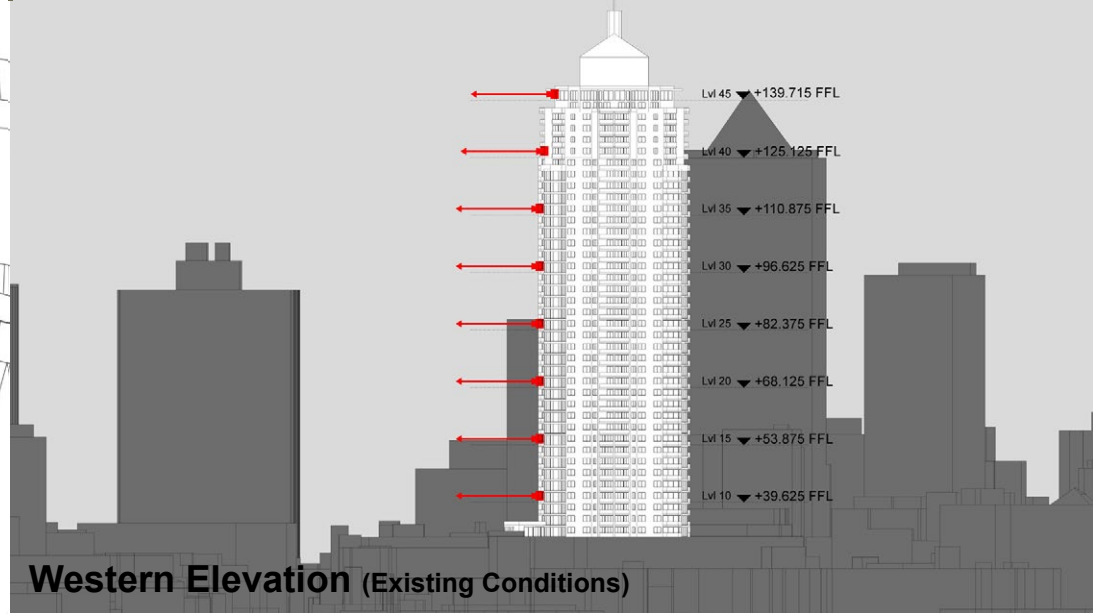
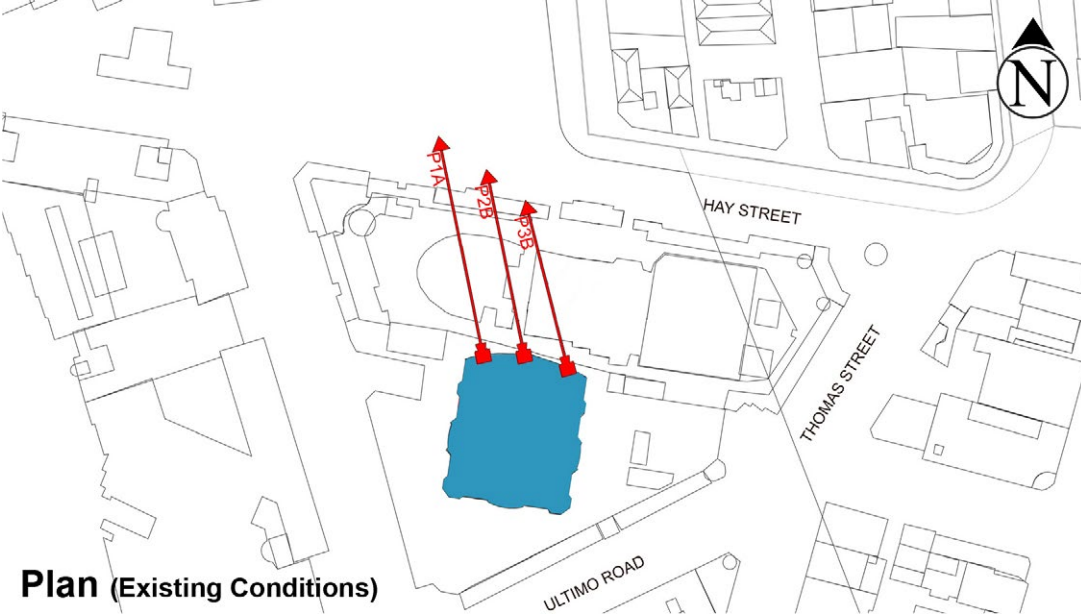
RL: 112.475 (Camera Height)

FOR INFORMATION ONLY

Illustrative designs of built forms in the Haymarket precinct do not form part of this development application (and will be the subject of separate development assessment processes) and is shown for information and broader illustrative purposes. These images are produced here for view analysis purposes only.

LEGEND: 19

-  Key Building
-  View Direction (50mm Camera)
-  Building envelope in the Haymarket Precinct (Subject of separate DA)



Peak Apartments

Position: P3B

Level: 30

RL: 98.225 (Camera Height)

FOR INFORMATION ONLY

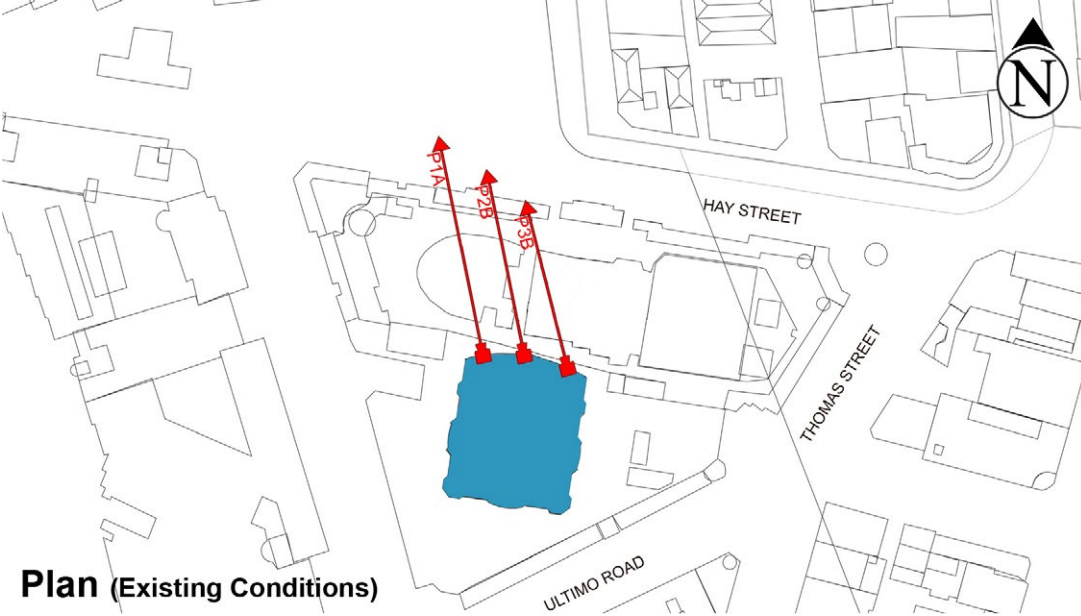
Illustrative designs of built forms in the Haymarket precinct do not form part of this development application (and will be the subject of separate development assessment processes) and is shown for information and broader illustrative purposes. These images are produced here for view analysis purposes only.

LEGEND: 20

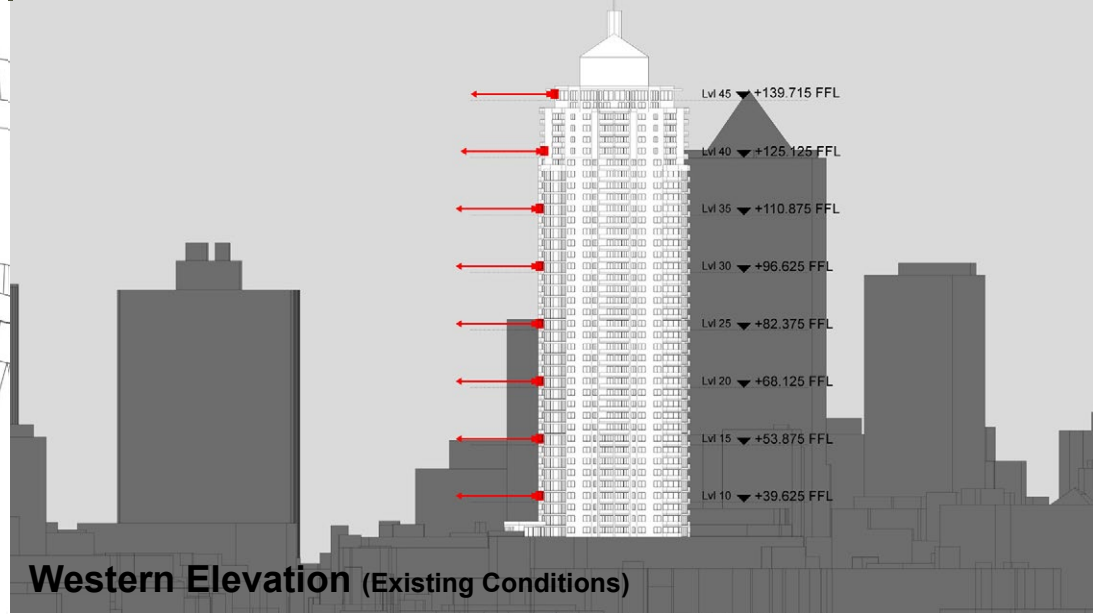
- Key Building
- ← View Direction (50mm Camera)
- Building envelope in the Haymarket Precinct (Subject of separate DA)



Existing View



Plan (Existing Conditions)



Western Elevation (Existing Conditions)

Peak Apartments

Position: P3B




Level: 25

RL: 83.975 (Camera Height)

FOR INFORMATION ONLY

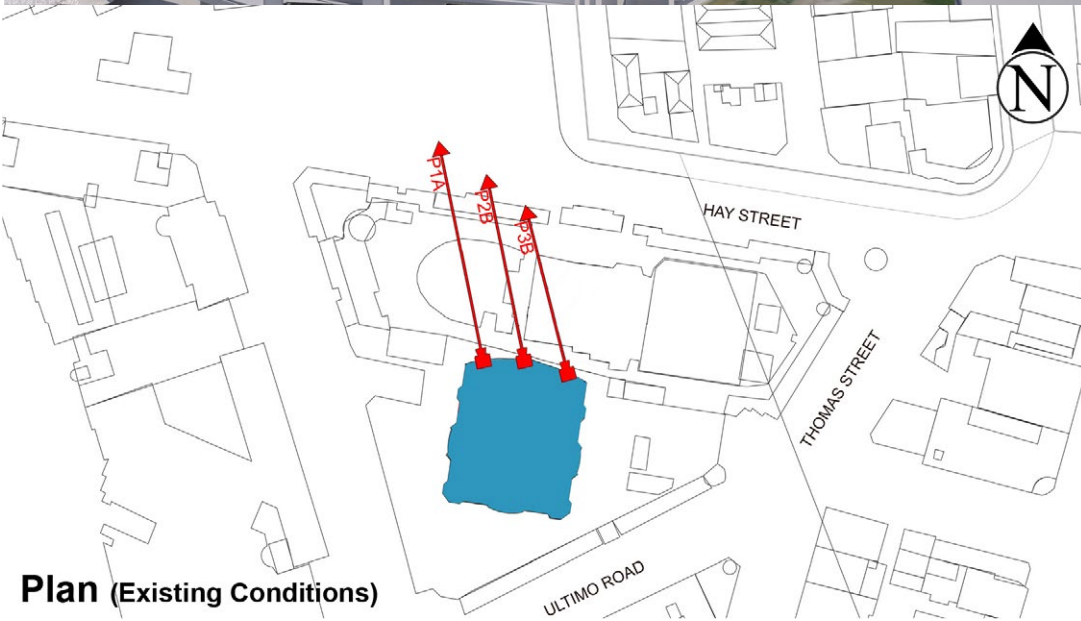
Illustrative designs of built forms in the Haymarket precinct do not form part of this development application (and will be the subject of separate development assessment processes) and is shown for information and broader illustrative purposes. These images are produced here for view analysis purposes only.

LEGEND: 21

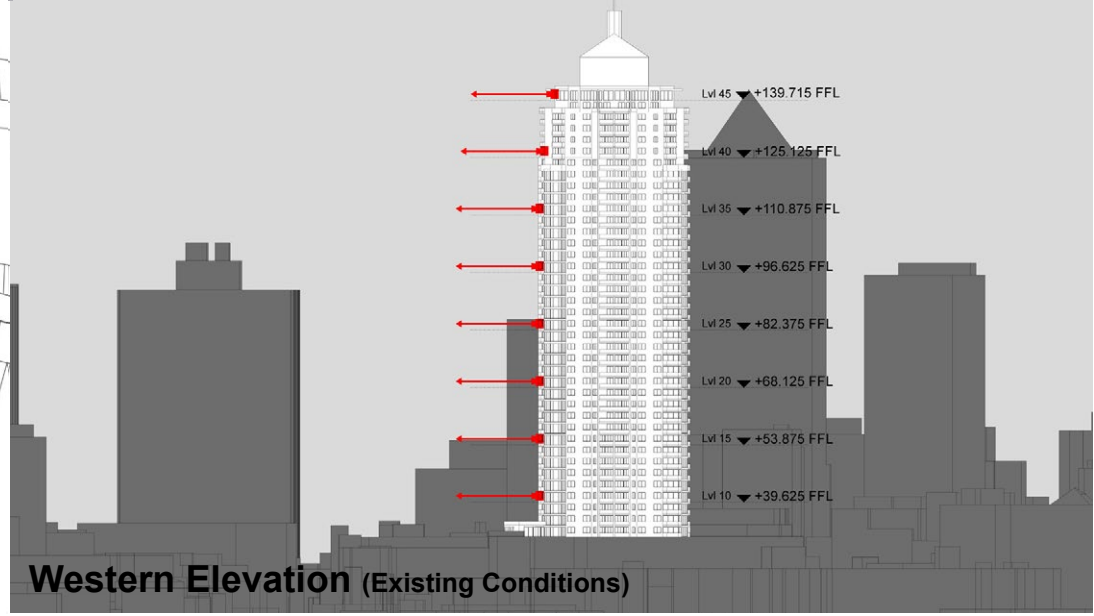
-  Key Building
-  View Direction (50mm Camera)
-  Building envelope in the Haymarket Precinct (Subject of separate DA)



Existing View



Plan (Existing Conditions)



Western Elevation (Existing Conditions)

Peak Apartments

Position: P3B




Level: 20

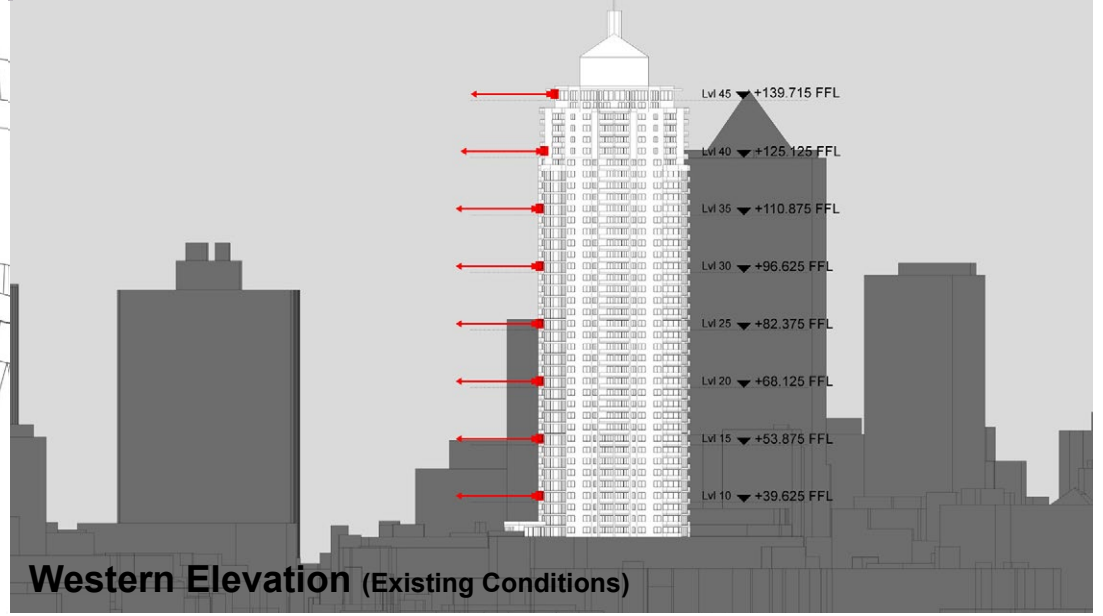
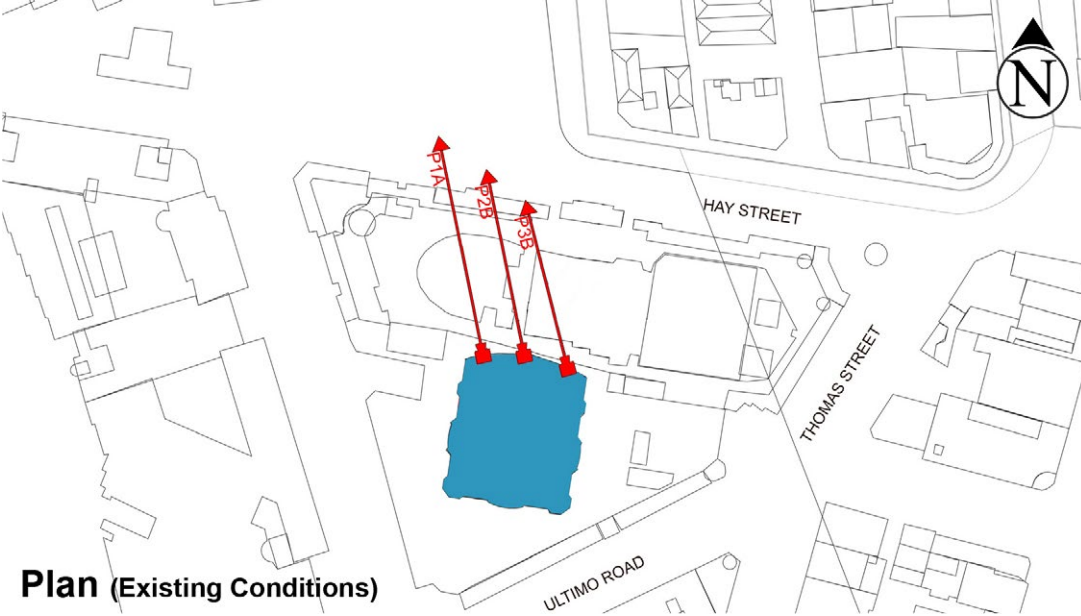
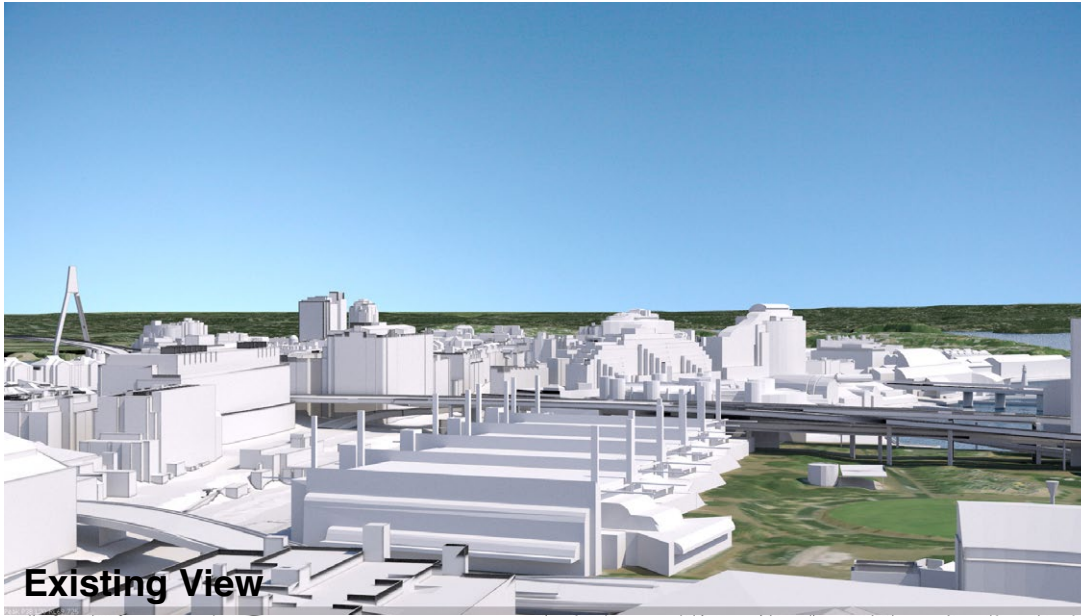
RL: 69.725 (Camera Height)

FOR INFORMATION ONLY

Illustrative designs of built forms in the Haymarket precinct do not form part of this development application (and will be the subject of separate development assessment processes) and is shown for information and broader illustrative purposes. These images are produced here for view analysis purposes only.

LEGEND: 22

-  Key Building
-  View Direction (50mm Camera)
-  Building envelope in the Haymarket Precinct (Subject of separate DA)



Peak Apartments

Position: P3B



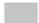
Level: 15

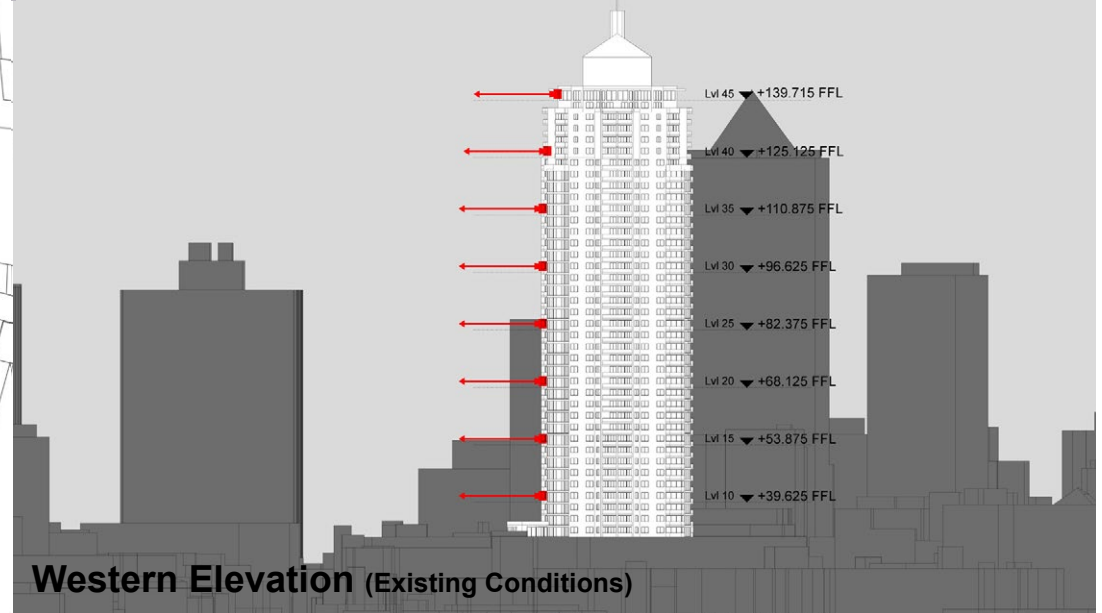
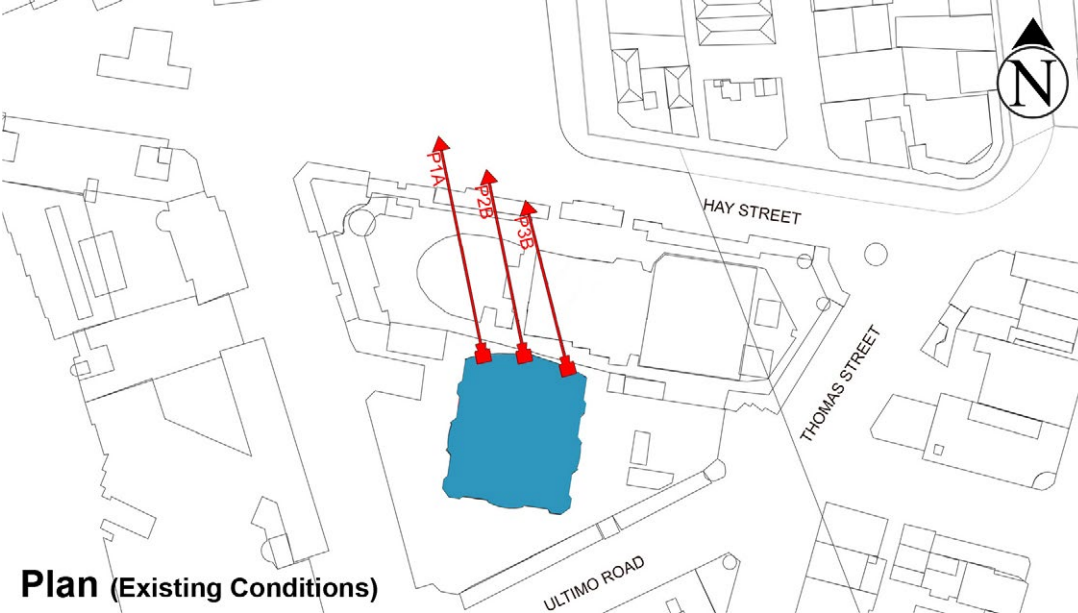
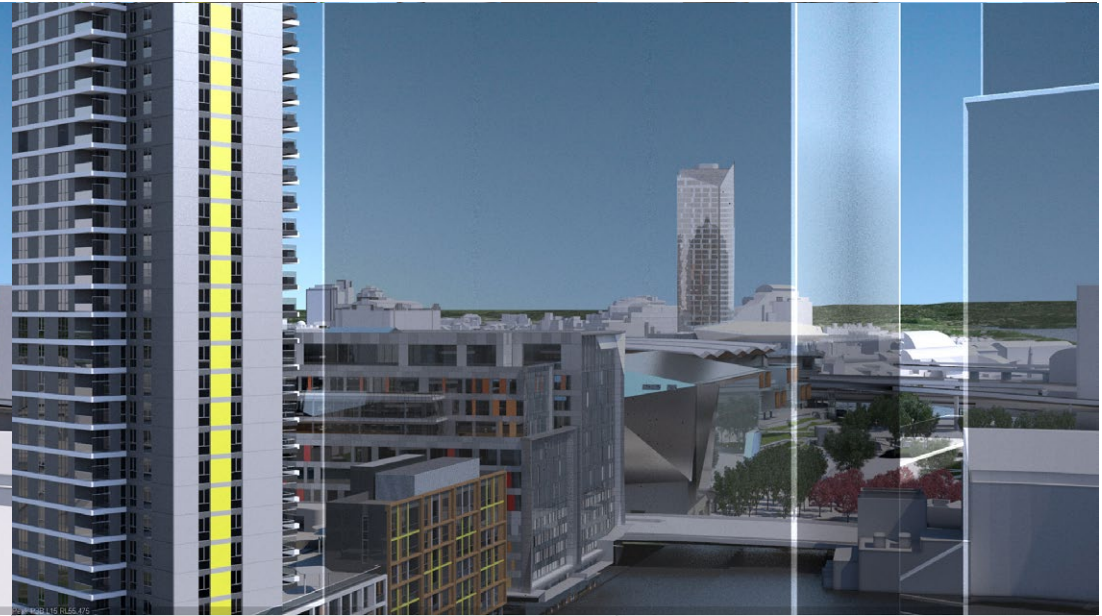
RL: 55.475 (Camera Height)

FOR INFORMATION ONLY

Illustrative designs of built forms in the Haymarket precinct do not form part of this development application (and will be the subject of separate development assessment processes) and is shown for information and broader illustrative purposes. These images are produced here for view analysis purposes only.

LEGEND: 23

-  Key Building
-  View Direction (50mm Camera)
-  Building envelope in the Haymarket Precinct (Subject of separate DA)



Peak Apartments

Position: P3B

Level: 10

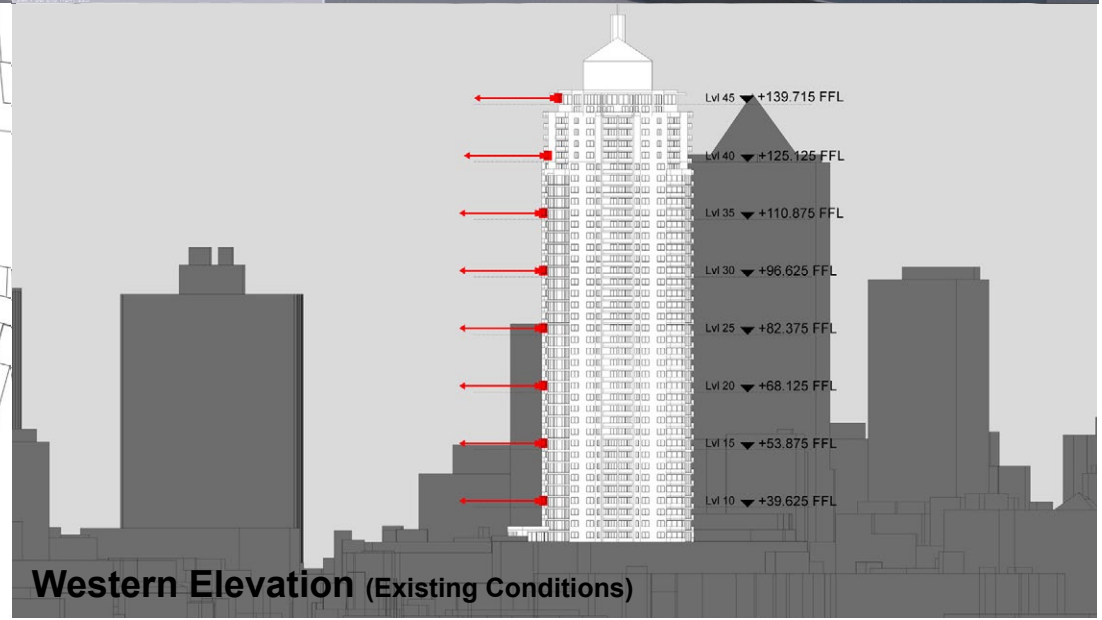
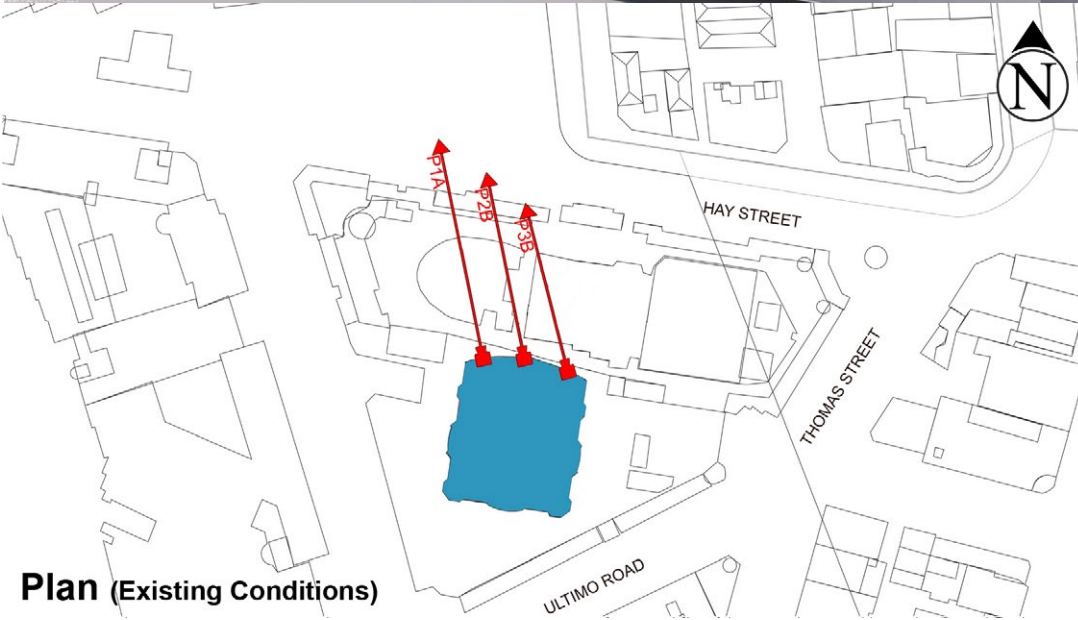
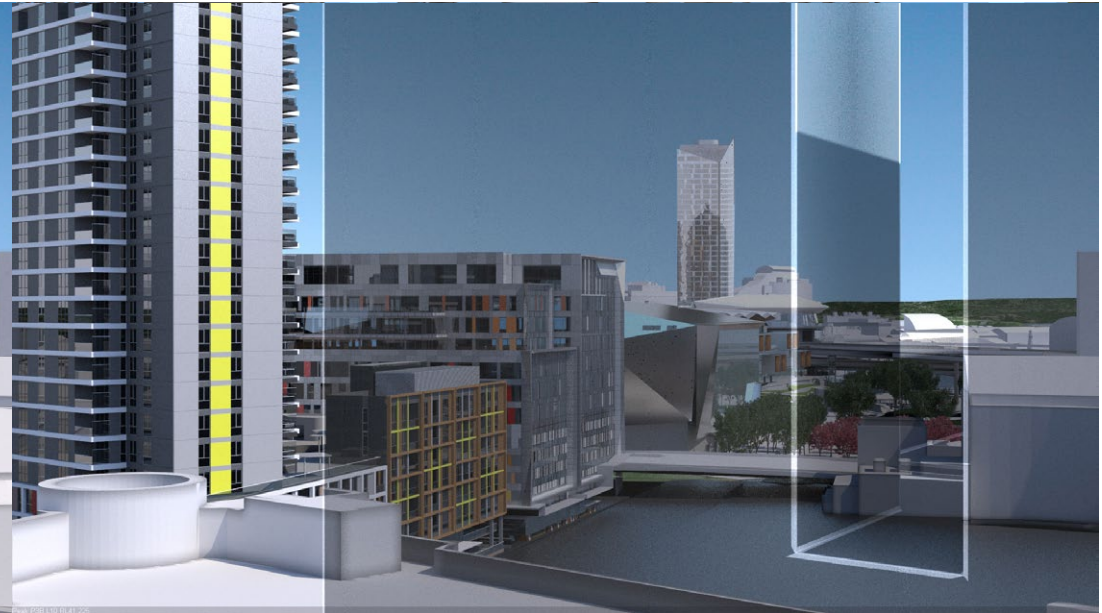
RL: 41.225 (Camera Height)

FOR INFORMATION ONLY

Illustrative designs of built forms in the Haymarket precinct do not form part of this development application (and will be the subject of separate development assessment processes) and is shown for information and broader illustrative purposes. These images are produced here for view analysis purposes only.

LEGEND: 24

- Key Building
- ← View Direction (50mm Camera)
- Building envelope in the Haymarket Precinct (Subject of separate DA)





SICEEP-Peak Apartments 4202 EXISTING



SICEEP- Peak Apartments 4202



SICEEP-Peak Apartments 4209 EXISTING



SICEEP- Peak Apartments 4209



SICEEP-Peak Apartments 4202 EXISTING



SICEEP- Peak Apartments 4202



SICEEP-Peak Apartments 4209 EXISTING



SICEEP- Peak Apartments 4209