

Oaks Goldsbrough Apartments

Position: P1A

Level: 13

RL: 53.49 (Camera Height)

FOR INFORMATION ONLY

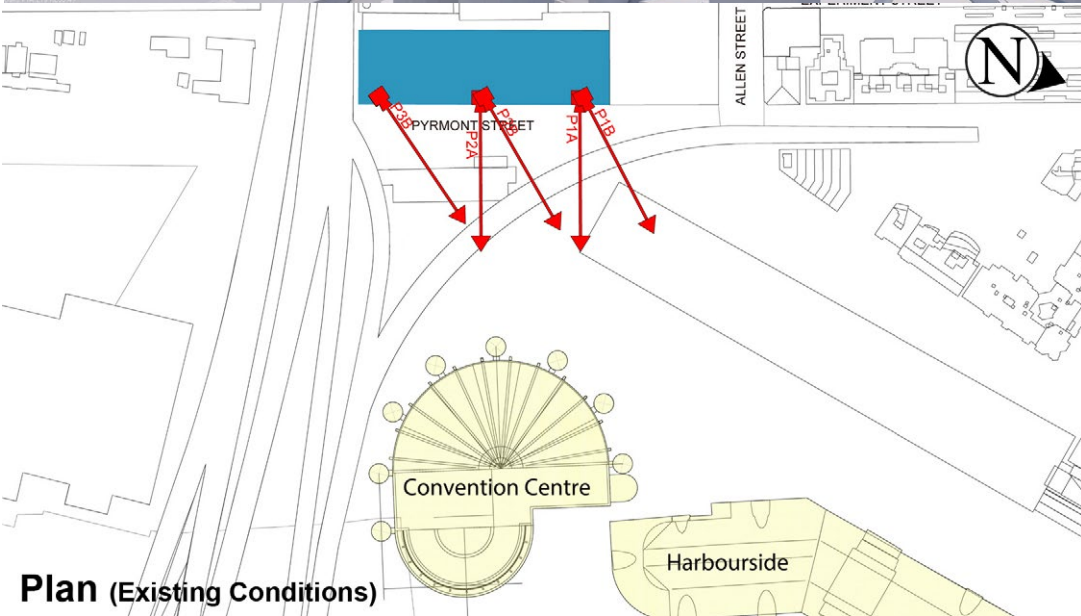
Illustrative designs of built forms in the Haymarket precinct do not form part of this development application (and will be the subject of separate development assessment processes) and is shown for information and broader illustrative purposes. These images are produced here for view analysis purposes only.

LEGEND: 51

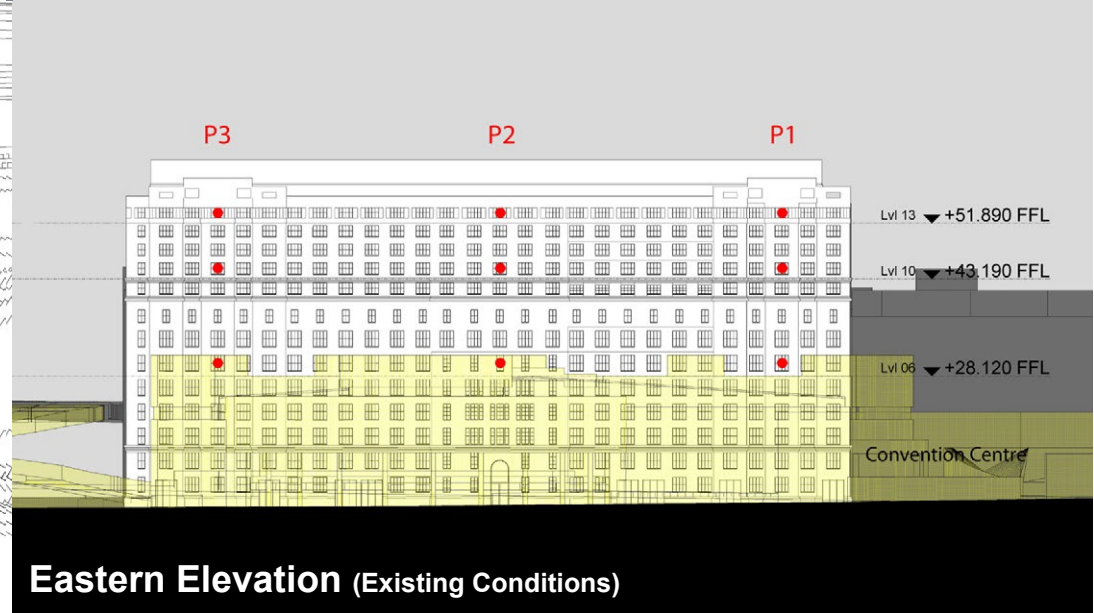
- Key Building
- Neighbouring Buildings
- View Direction (50mm Camera)
- Camera Position



Existing View



Plan (Existing Conditions)



Eastern Elevation (Existing Conditions)

Oaks Goldsbrough Apartments

Position: P1A

Level: 10

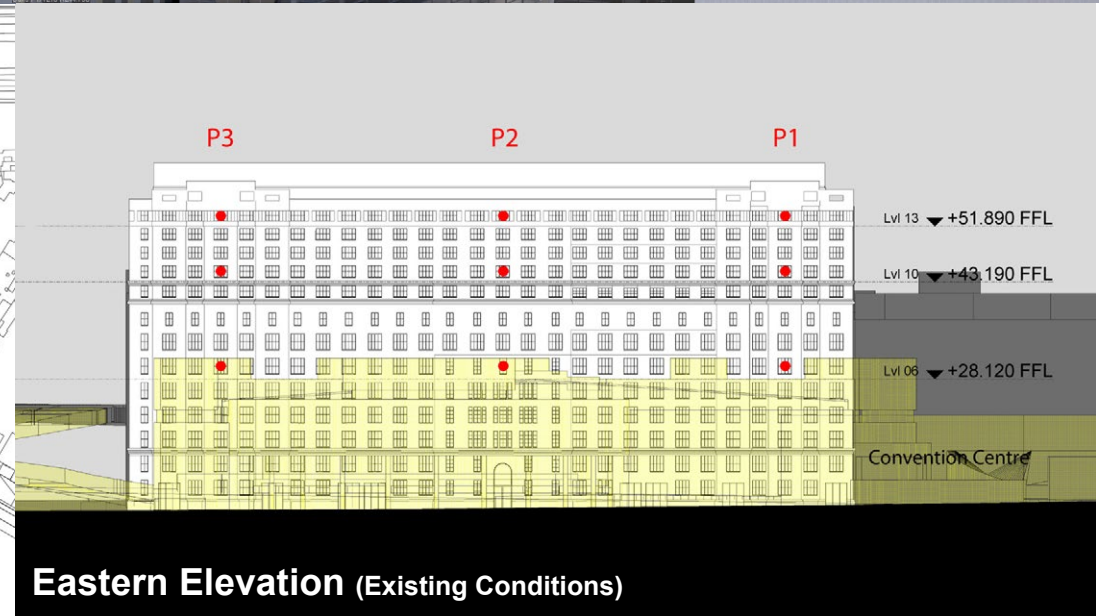
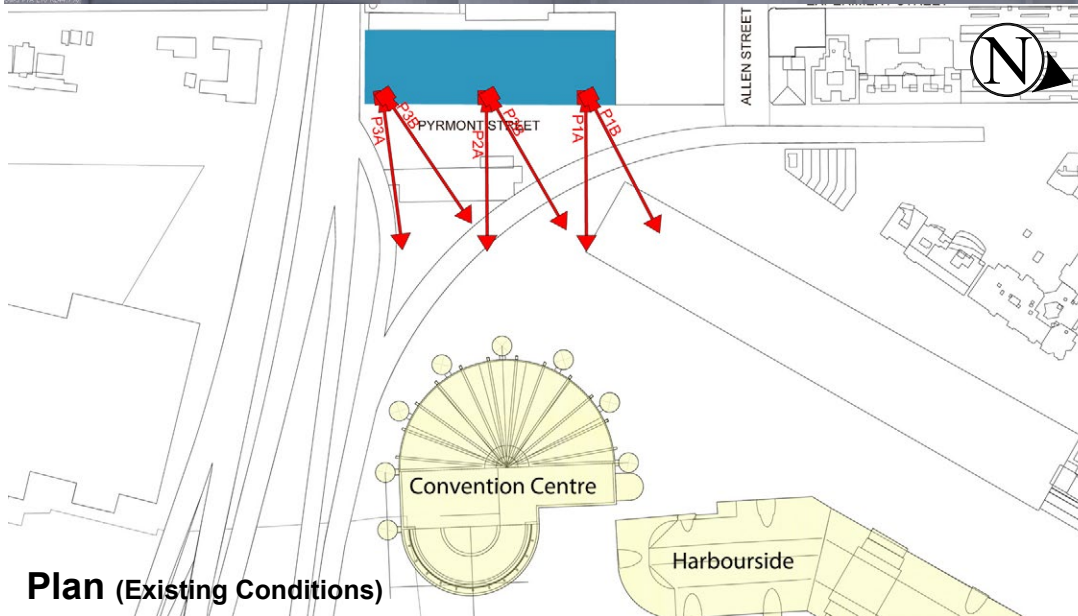
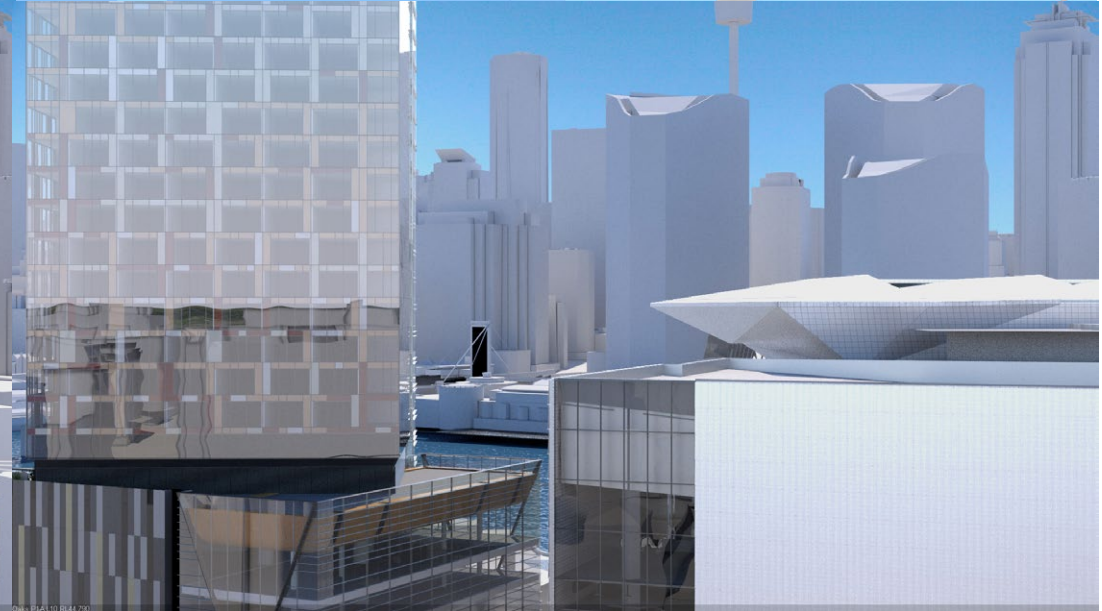
RL: 44.790 (Camera Height)

FOR INFORMATION ONLY

Illustrative designs of built forms in the Haymarket precinct do not form part of this development application (and will be the subject of separate development assessment processes) and is shown for information and broader illustrative purposes. These images are produced here for view analysis purposes only.

LEGEND: 52

- Key Building
- Neighbouring Buildings
- View Direction (50mm Camera)
- Camera Position



Oaks Goldsbrough Apartments

Position: P1A

Level: 06

RL: 29.720 (Camera Height)

FOR INFORMATION ONLY

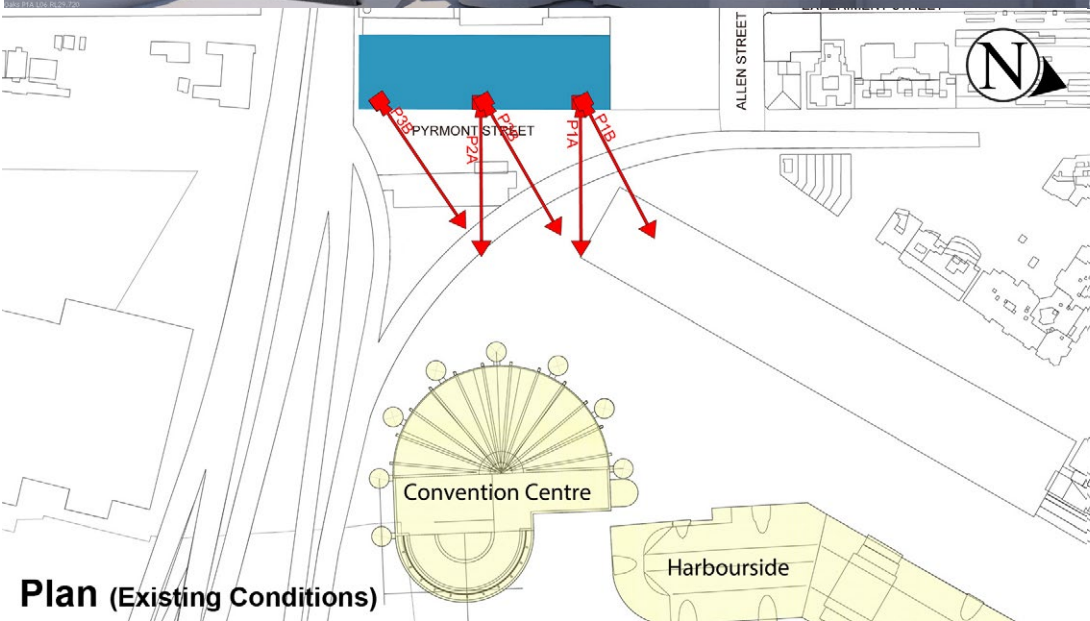
Illustrative designs of built forms in the Haymarket precinct do not form part of this development application (and will be the subject of separate development assessment processes) and is shown for information and broader illustrative purposes. These images are produced here for view analysis purposes only.

LEGEND: 53

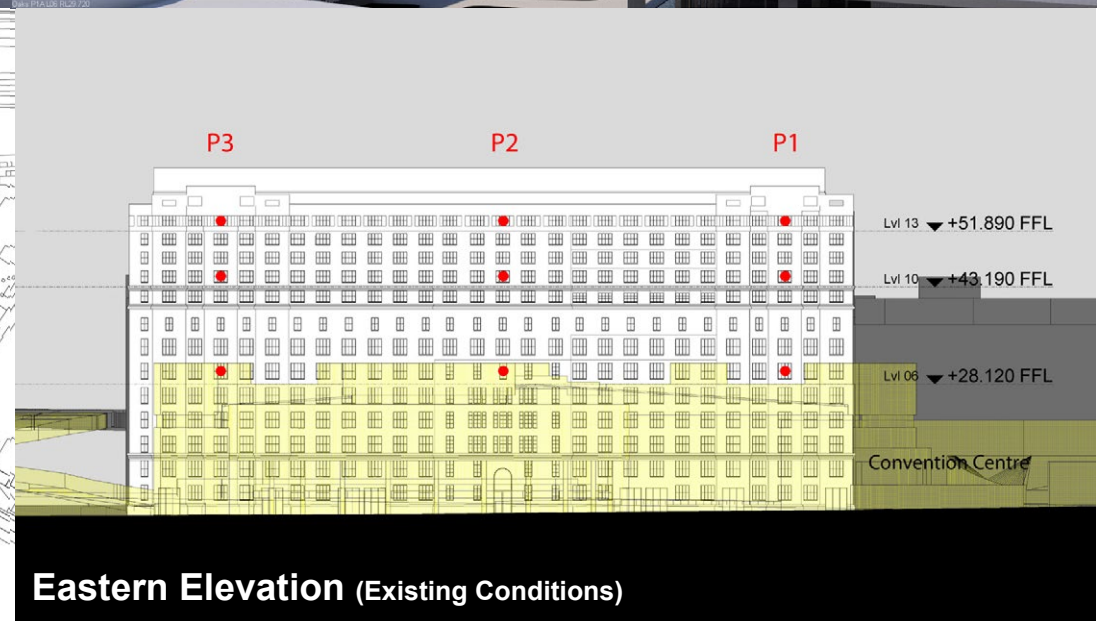
- Key Building
- Neighbouring Buildings
- View Direction (50mm Camera)
- Camera Position



Existing View



Plan (Existing Conditions)



Eastern Elevation (Existing Conditions)

Oaks Goldsbrough Apartments

Position: P1B

Level: 13

RL: 53.49 (Camera Height)

FOR INFORMATION ONLY

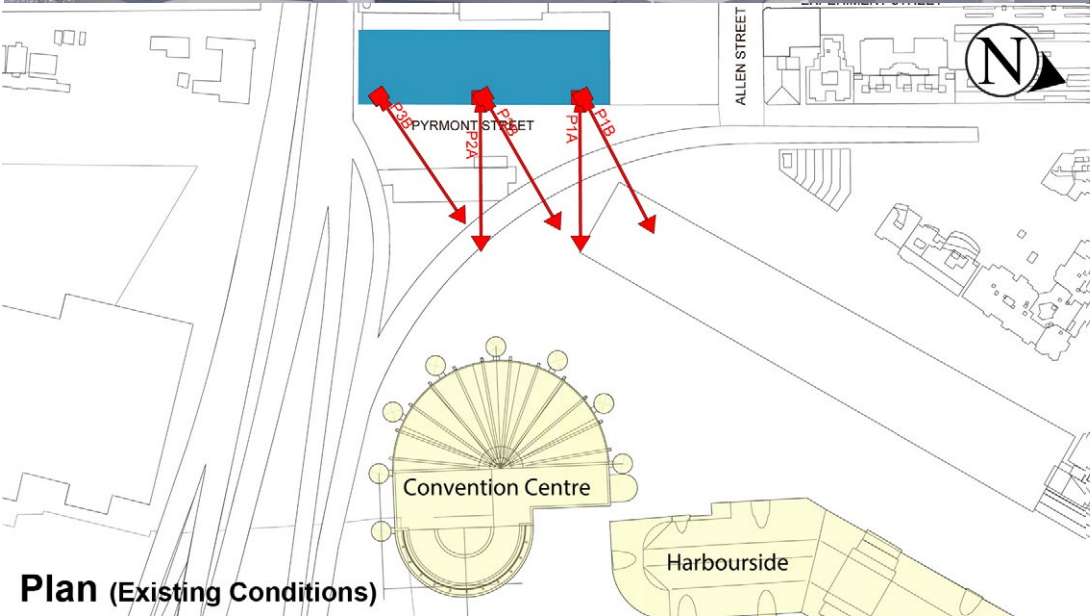
Illustrative designs of built forms in the Haymarket precinct do not form part of this development application (and will be the subject of separate development assessment processes) and is shown for information and broader illustrative purposes. These images are produced here for view analysis purposes only.

LEGEND: **54**

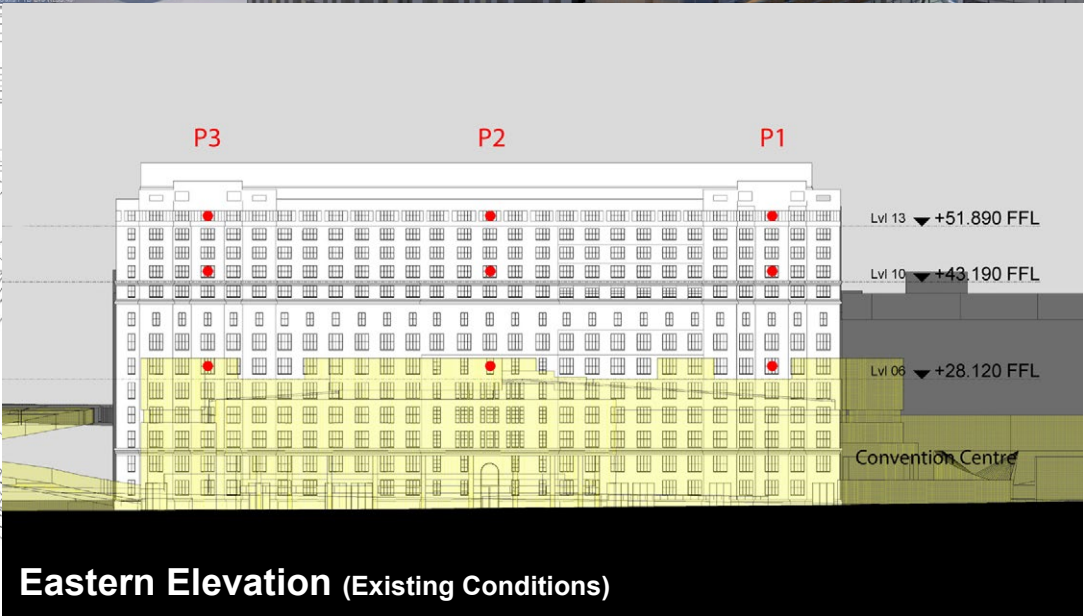
- Key Building
- Neighbouring Buildings
- View Direction (50mm Camera)
- Camera Position



Existing View



Plan (Existing Conditions)



Eastern Elevation (Existing Conditions)

Oaks Goldsbrough Apartments

Position: P1B

Level: 10

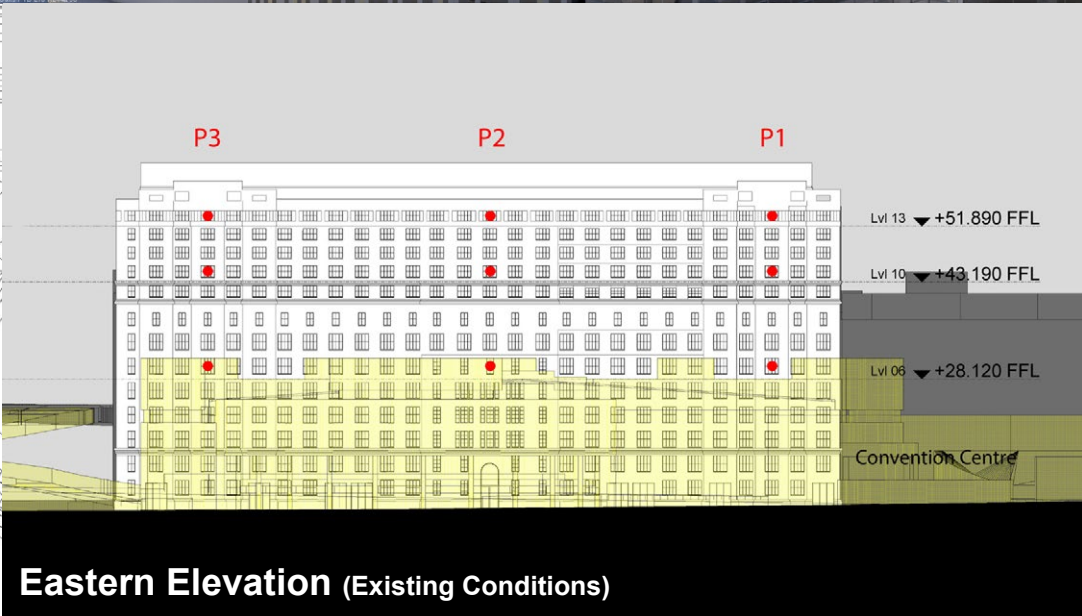
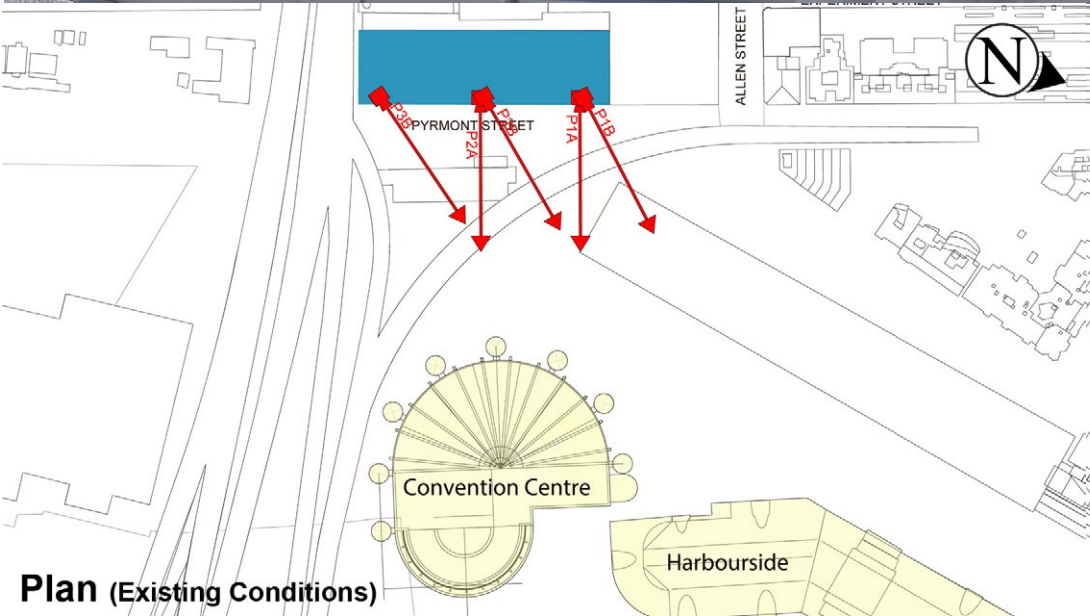
RL: 44.790 (Camera Height)

FOR INFORMATION ONLY

Illustrative designs of built forms in the Haymarket precinct do not form part of this development application (and will be the subject of separate development assessment processes) and is shown for information and broader illustrative purposes. These images are produced here for view analysis purposes only.

LEGEND: 55

- Key Building
- Neighbouring Buildings
- View Direction (50mm Camera)
- Camera Position



Oaks Goldsbrough Apartments

Position: P1B

Level: 06

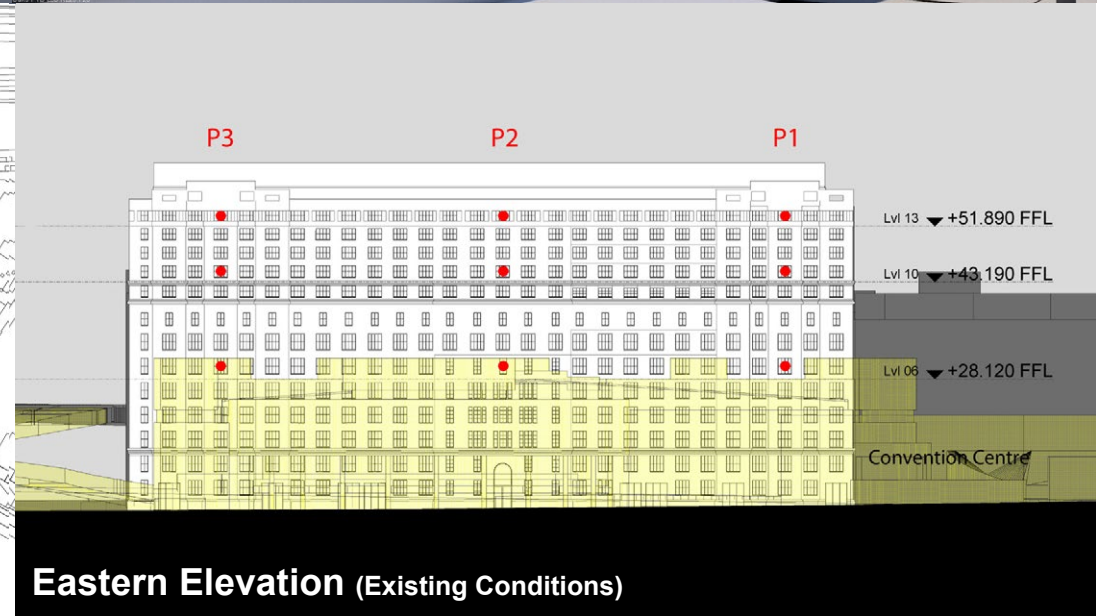
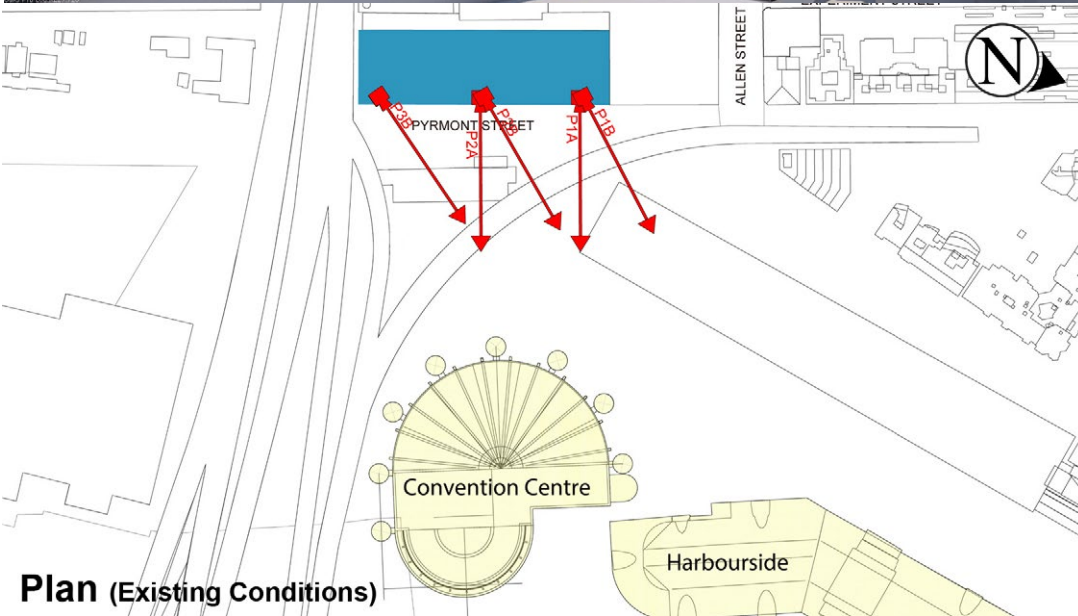
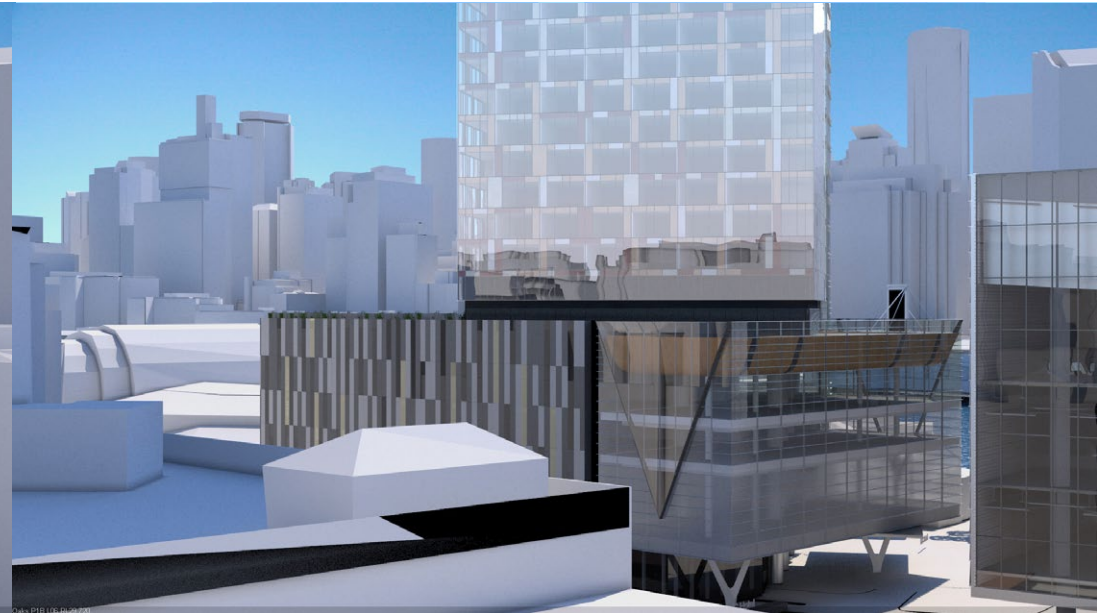
RL: 29.720 (Camera Height)

FOR INFORMATION ONLY

Illustrative designs of built forms in the Haymarket precinct do not form part of this development application (and will be the subject of separate development assessment processes) and is shown for information and broader illustrative purposes. These images are produced here for view analysis purposes only.

LEGEND: 56

- Key Building
- Neighbouring Buildings
- View Direction (50mm Camera)
- Camera Position



Plan (Existing Conditions)

Eastern Elevation (Existing Conditions)

Oaks Goldsbrough Apartments

Position: P2A

Level: 13

RL: 53.49 (Camera Height)

FOR INFORMATION ONLY

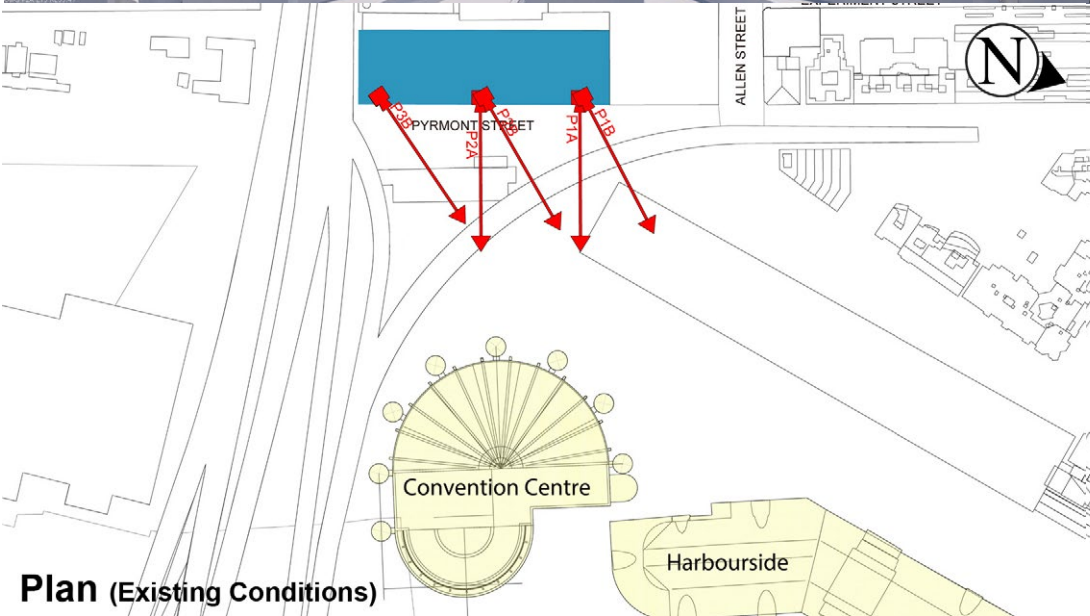
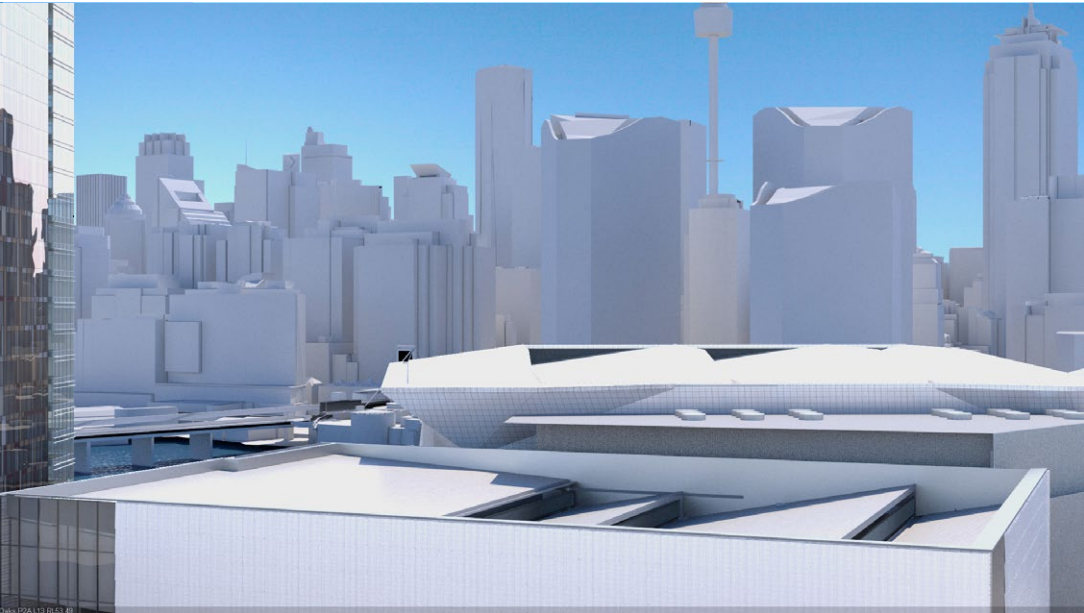
Illustrative designs of built forms in the Haymarket precinct do not form part of this development application (and will be the subject of separate development assessment processes) and is shown for information and broader illustrative purposes. These images are produced here for view analysis purposes only.

LEGEND: 57

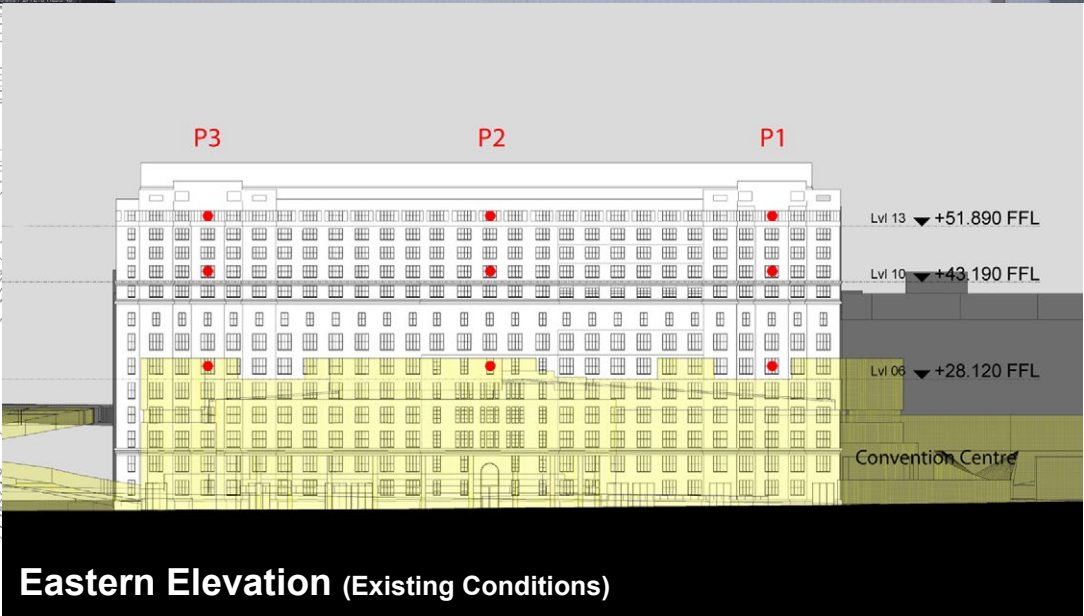
- Key Building
- Neighbouring Buildings
- View Direction (50mm Camera)
- Camera Position



Existing View



Plan (Existing Conditions)



Eastern Elevation (Existing Conditions)

Oaks Goldsbrough Apartments

Position: P2A

Level: 10

RL: 44.790 (Camera Height)

FOR INFORMATION ONLY

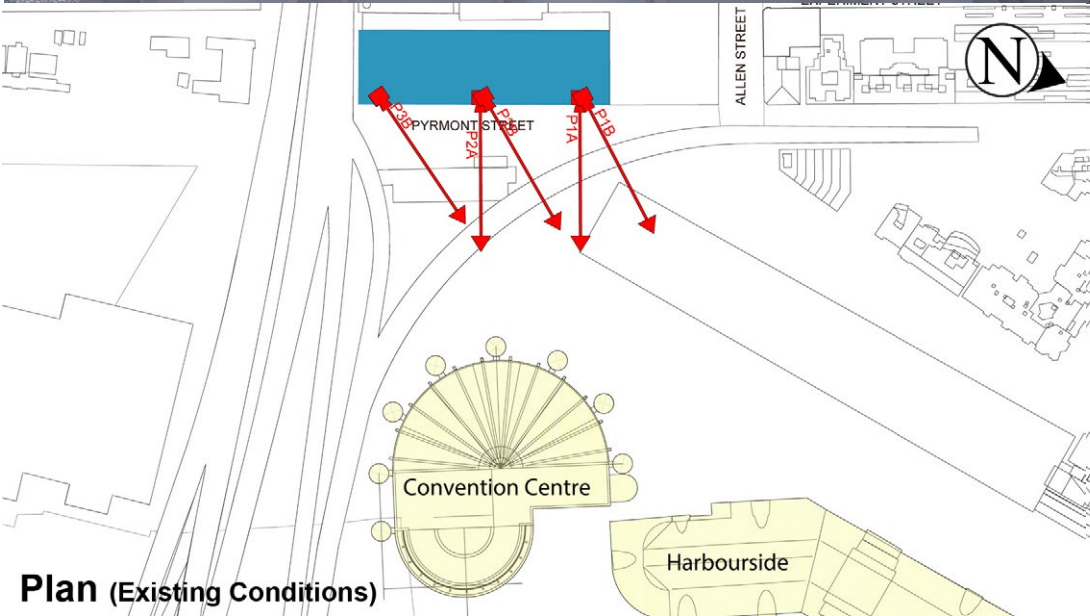
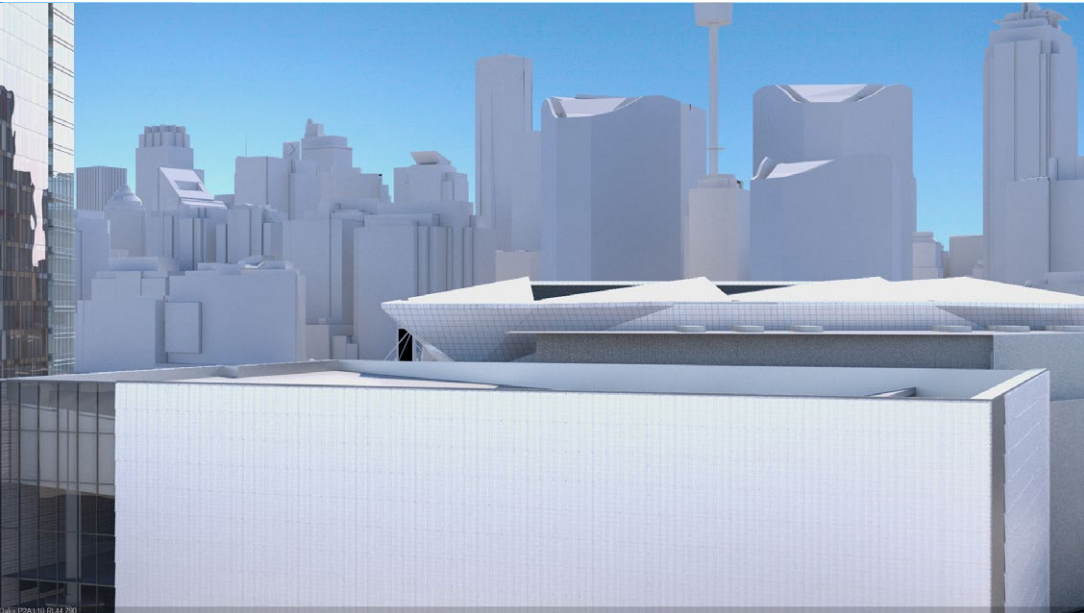
Illustrative designs of built forms in the Haymarket precinct do not form part of this development application (and will be the subject of separate development assessment processes) and is shown for information and broader illustrative purposes. These images are produced here for view analysis purposes only.

LEGEND: 58

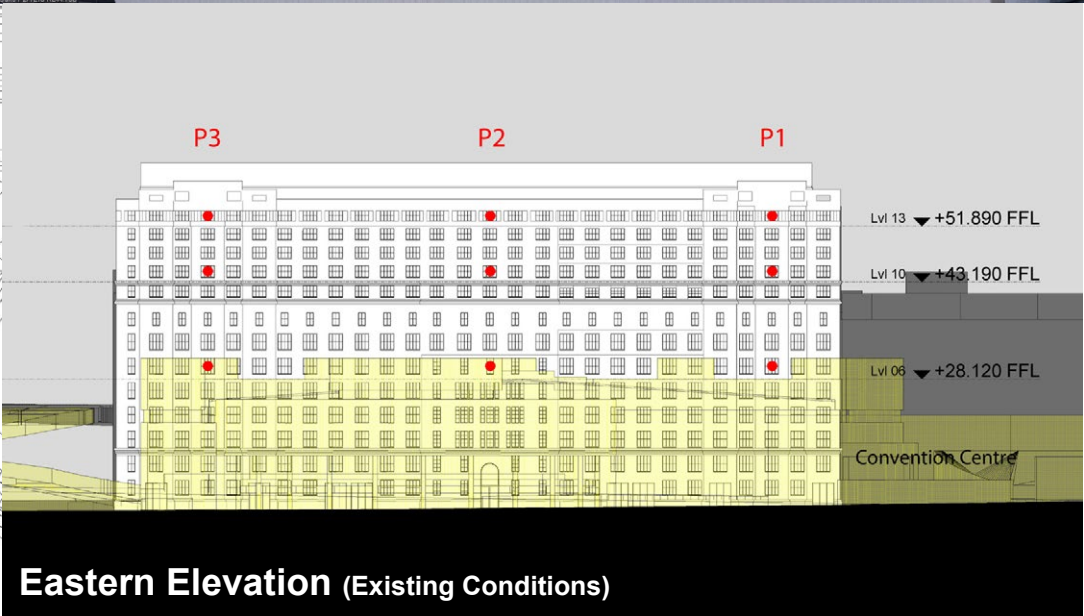
- Key Building
- Neighbouring Buildings
- View Direction (50mm Camera)
- Camera Position



Existing View



Plan (Existing Conditions)



Eastern Elevation (Existing Conditions)

Oaks Goldsbrough Apartments

Position: P2A

Level: 06

RL: 29.720 (Camera Height)

FOR INFORMATION ONLY

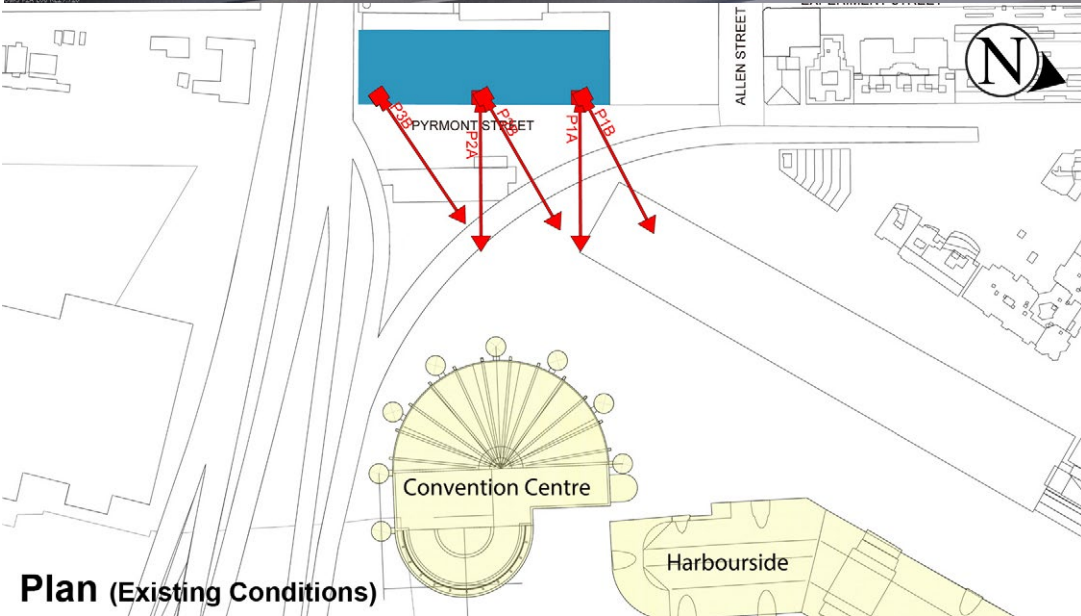
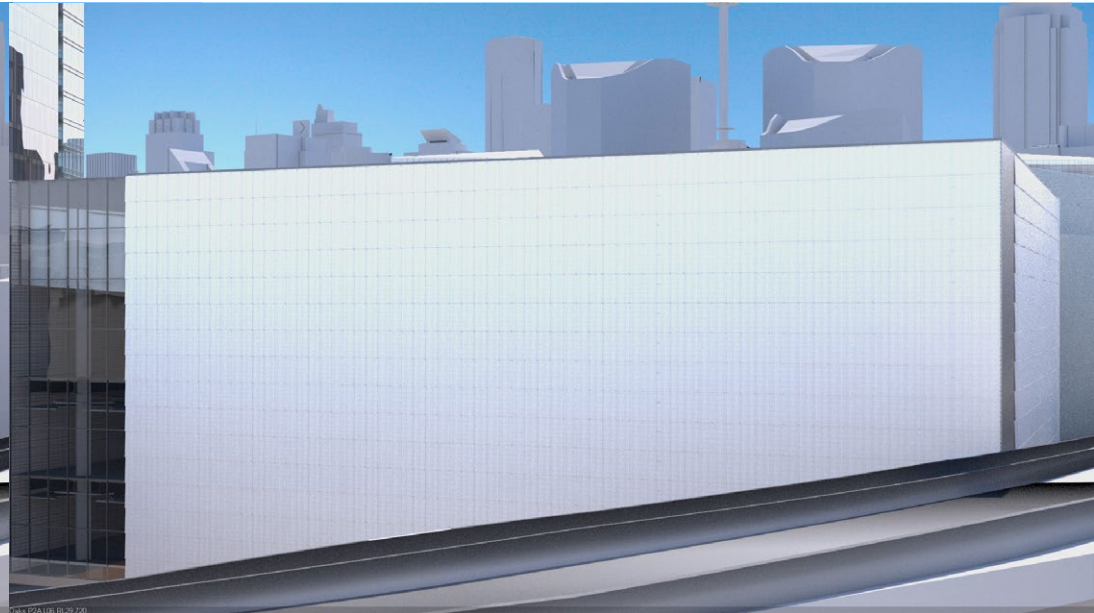
Illustrative designs of built forms in the Haymarket precinct do not form part of this development application (and will be the subject of separate development assessment processes) and is shown for information and broader illustrative purposes. These images are produced here for view analysis purposes only.

LEGEND: 59

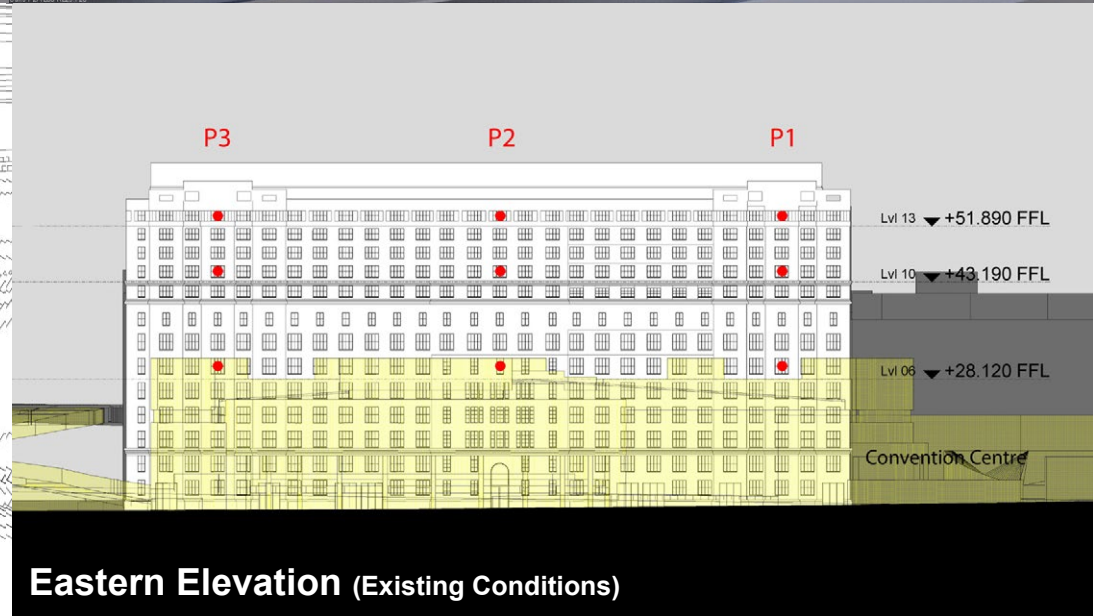
- Key Building
- Neighbouring Buildings
- View Direction (50mm Camera)
- Camera Position



Existing View



Plan (Existing Conditions)



Eastern Elevation (Existing Conditions)

Oaks Goldsbrough Apartments

Position: P2B

Level: 13

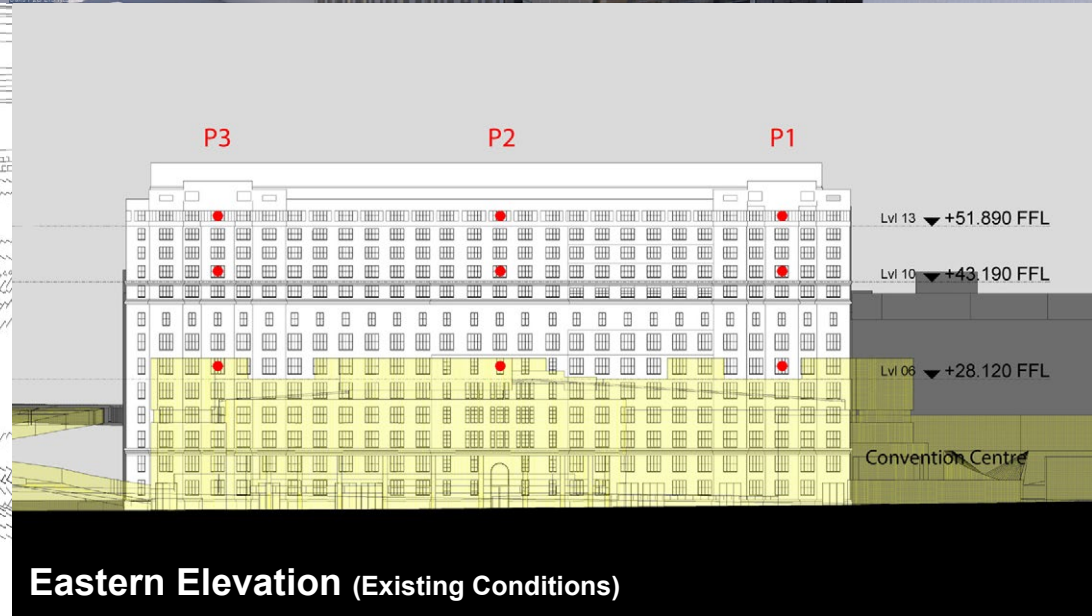
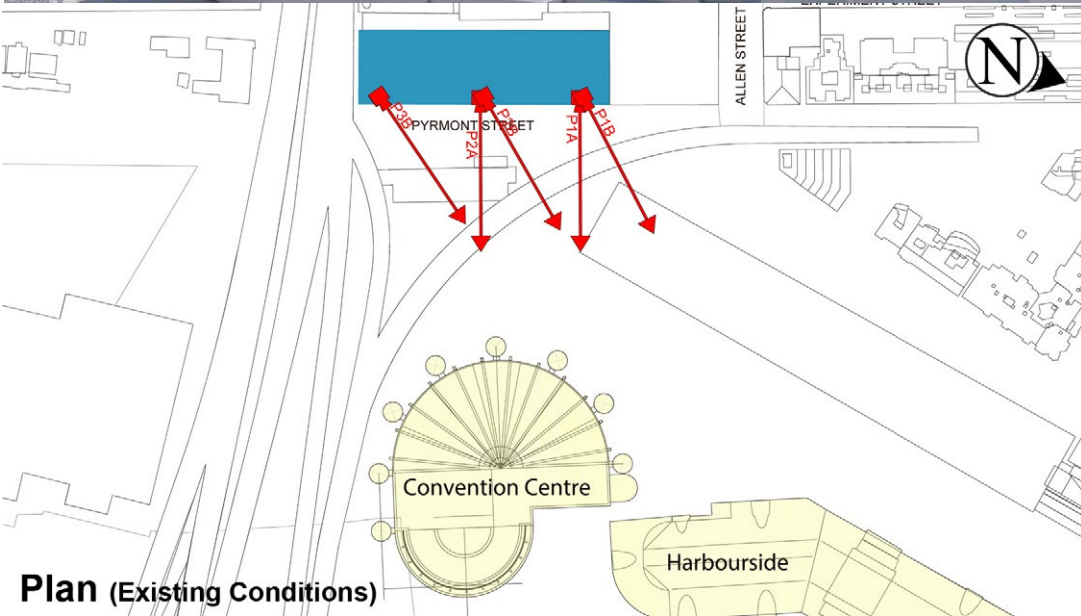
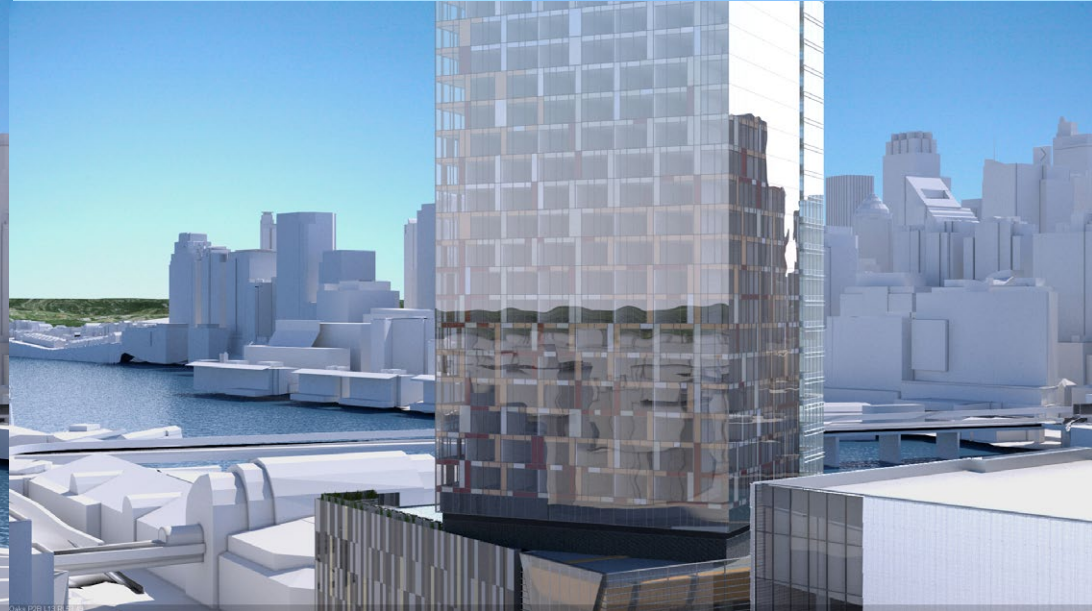
RL: 53.49 (Camera Height)

FOR INFORMATION ONLY

Illustrative designs of built forms in the Haymarket precinct do not form part of this development application (and will be the subject of separate development assessment processes) and is shown for information and broader illustrative purposes. These images are produced here for view analysis purposes only.

LEGEND: 60

- Key Building
- Neighbouring Buildings
- View Direction (50mm Camera)
- Camera Position



Oaks Goldsbrough Apartments

Position: P2B

Level: 10

RL: 44.790 (Camera Height)

FOR INFORMATION ONLY

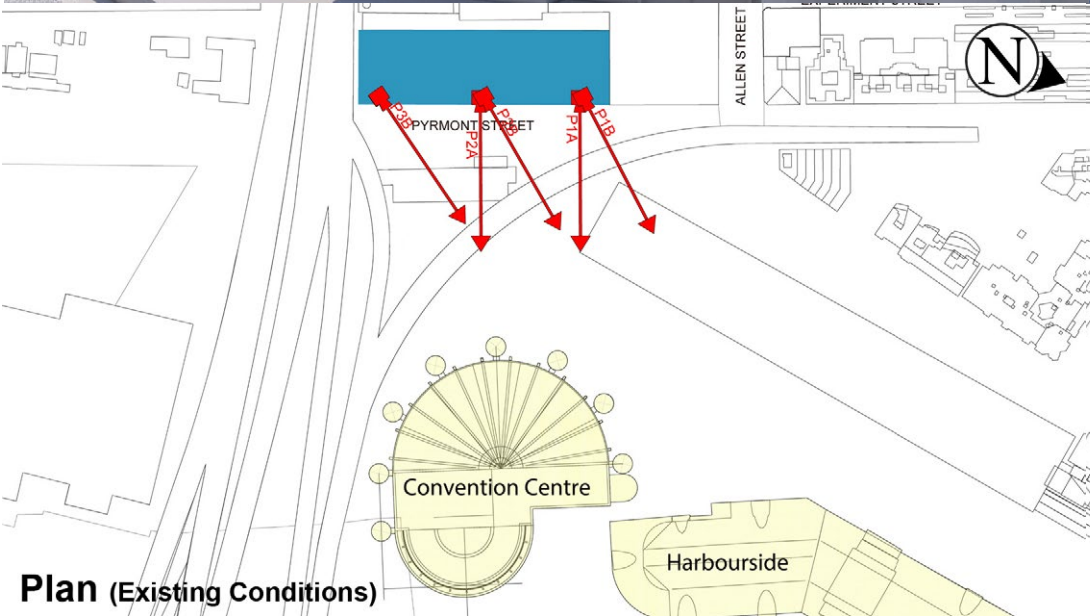
Illustrative designs of built forms in the Haymarket precinct do not form part of this development application (and will be the subject of separate development assessment processes) and is shown for information and broader illustrative purposes. These images are produced here for view analysis purposes only.

LEGEND: 61

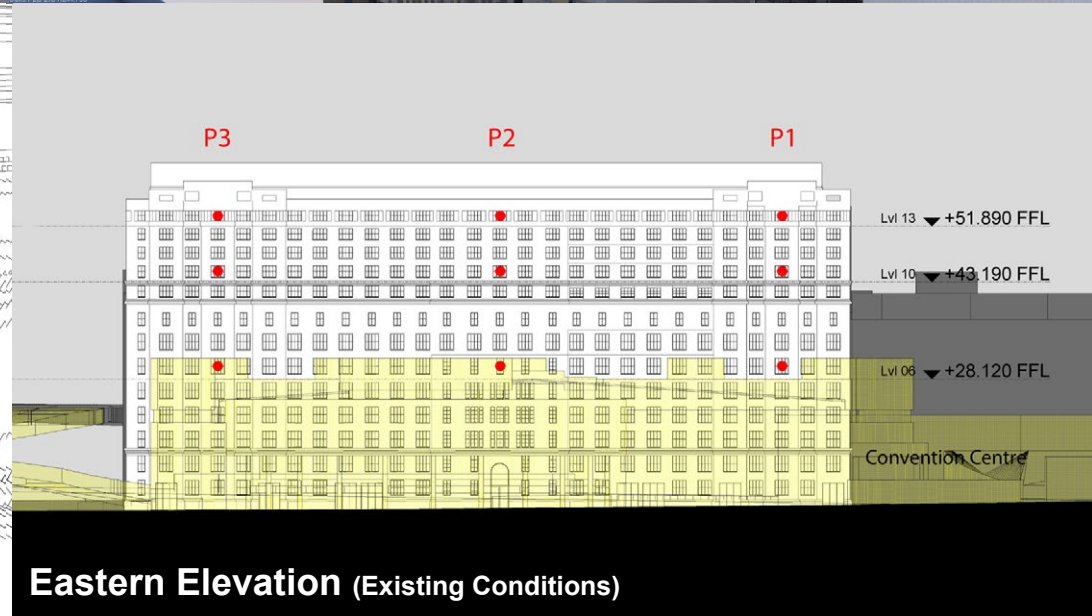
- Key Building
- Neighbouring Buildings
- View Direction (50mm Camera)
- Camera Position



Existing View



Plan (Existing Conditions)



Eastern Elevation (Existing Conditions)

Oaks Goldsbrough Apartments

Position: P2B

Level: 06

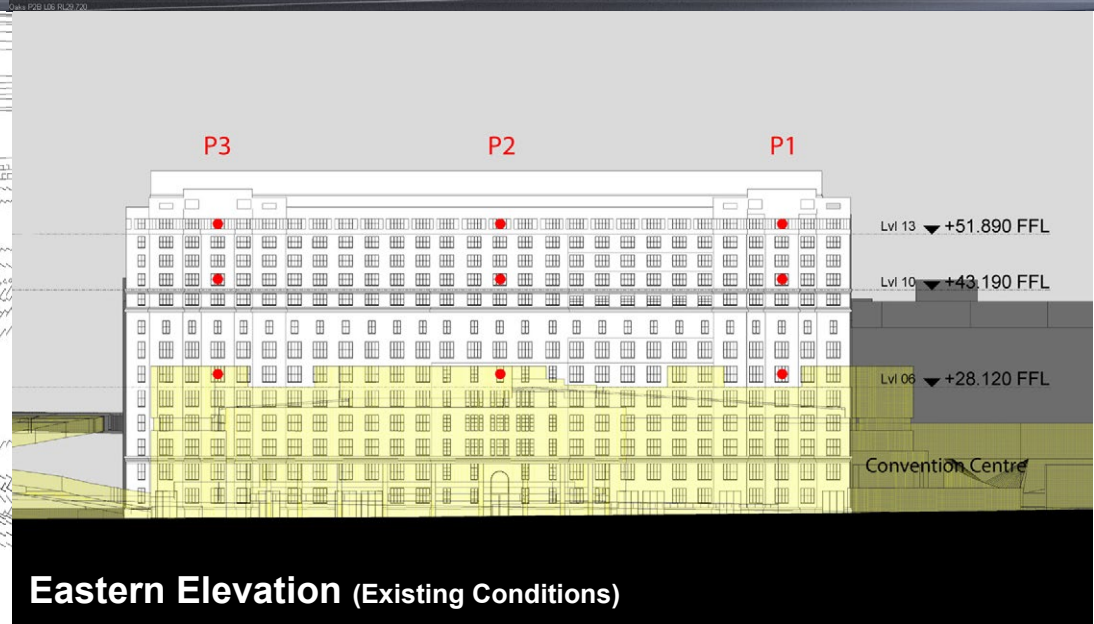
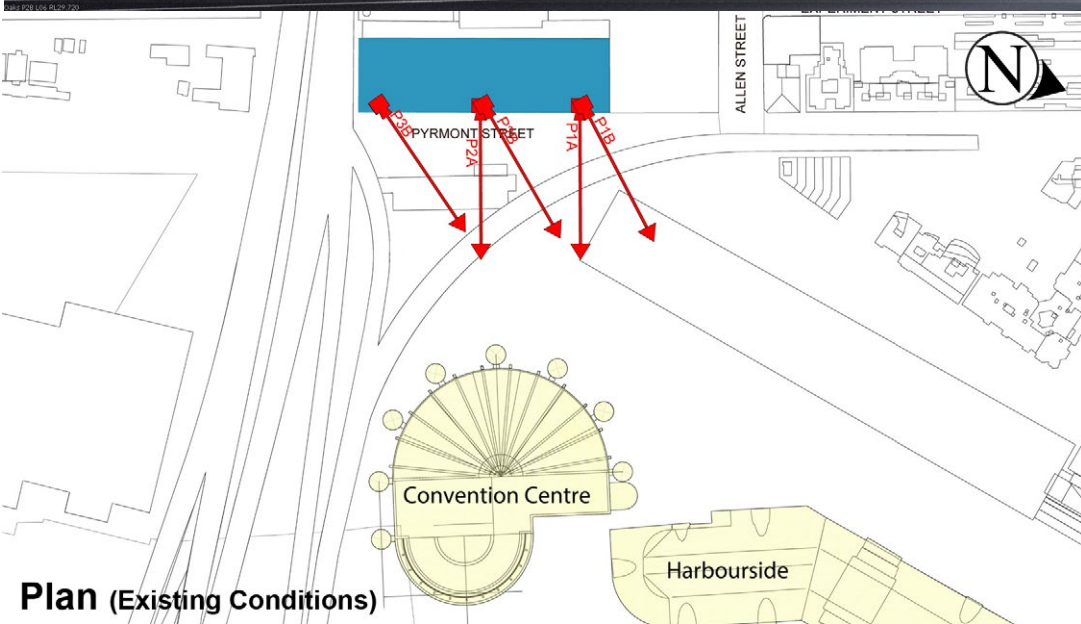
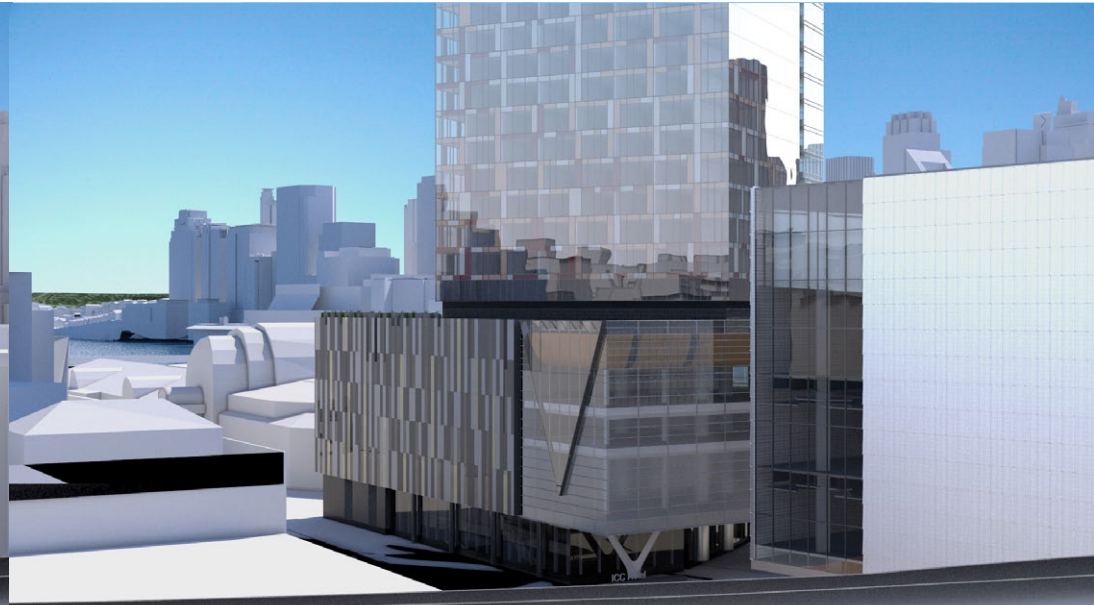
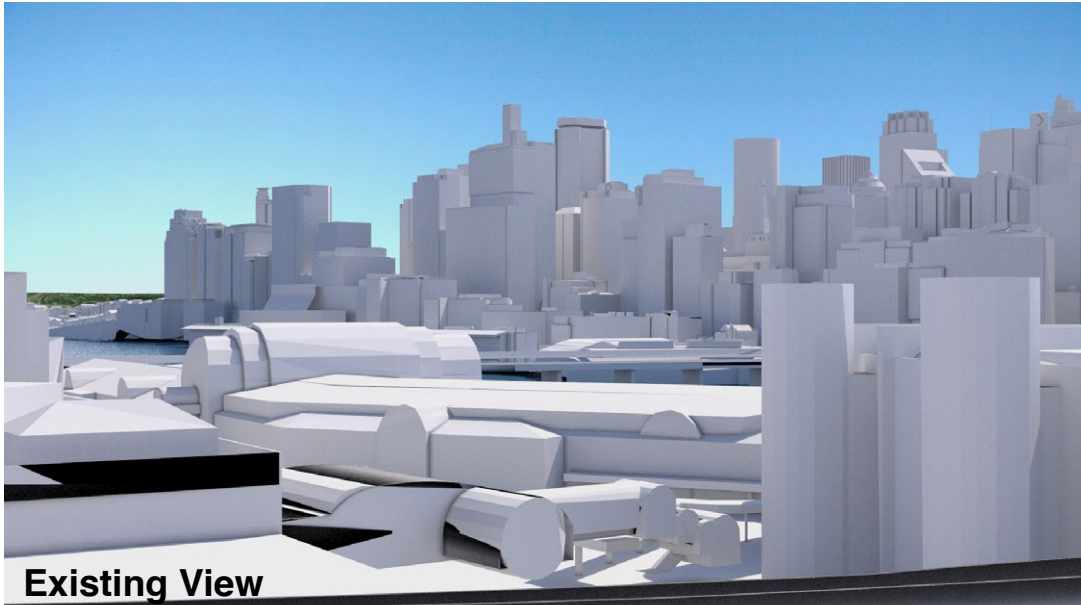
RL: 29.720 (Camera Height)

FOR INFORMATION ONLY

Illustrative designs of built forms in the Haymarket precinct do not form part of this development application (and will be the subject of separate development assessment processes) and is shown for information and broader illustrative purposes. These images are produced here for view analysis purposes only.

LEGEND: 62

- Key Building
- Neighbouring Buildings
- View Direction (50mm Camera)
- Camera Position



Oaks Goldsbrough Apartments

Position: P3B

Level: 13

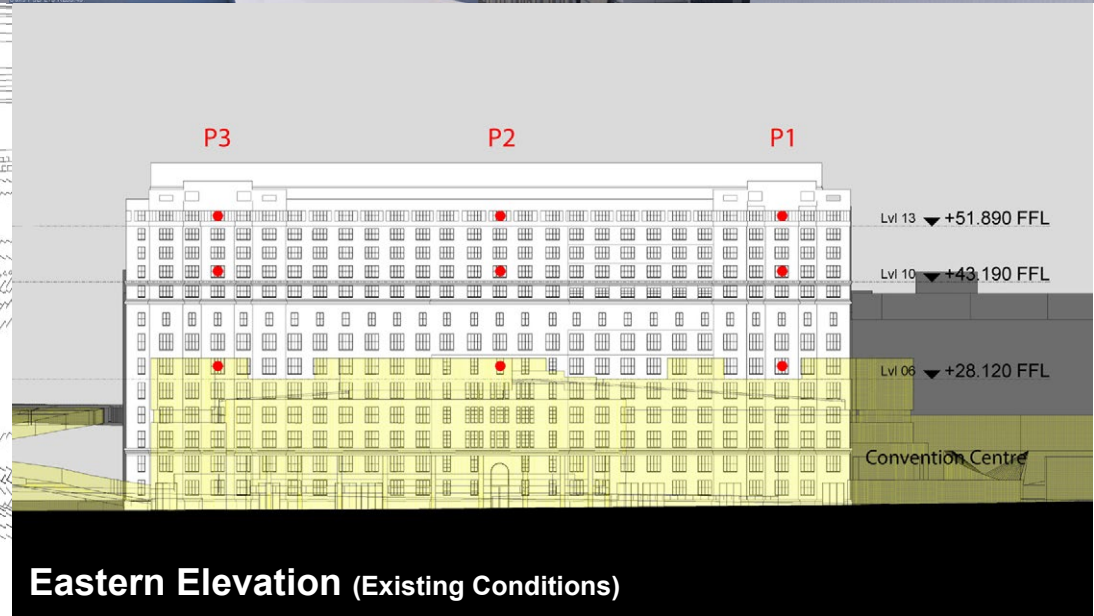
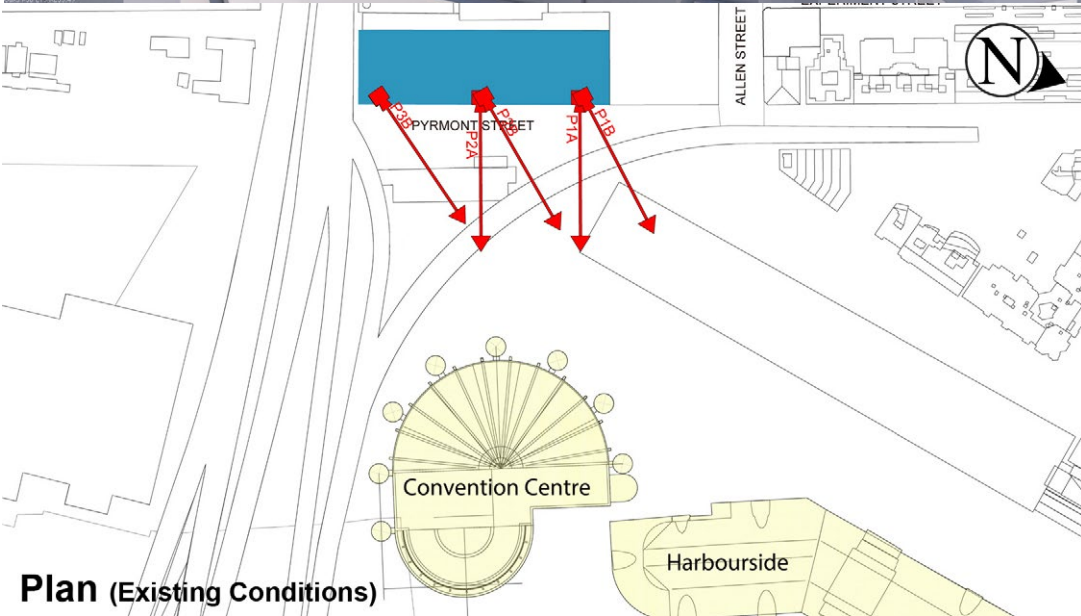
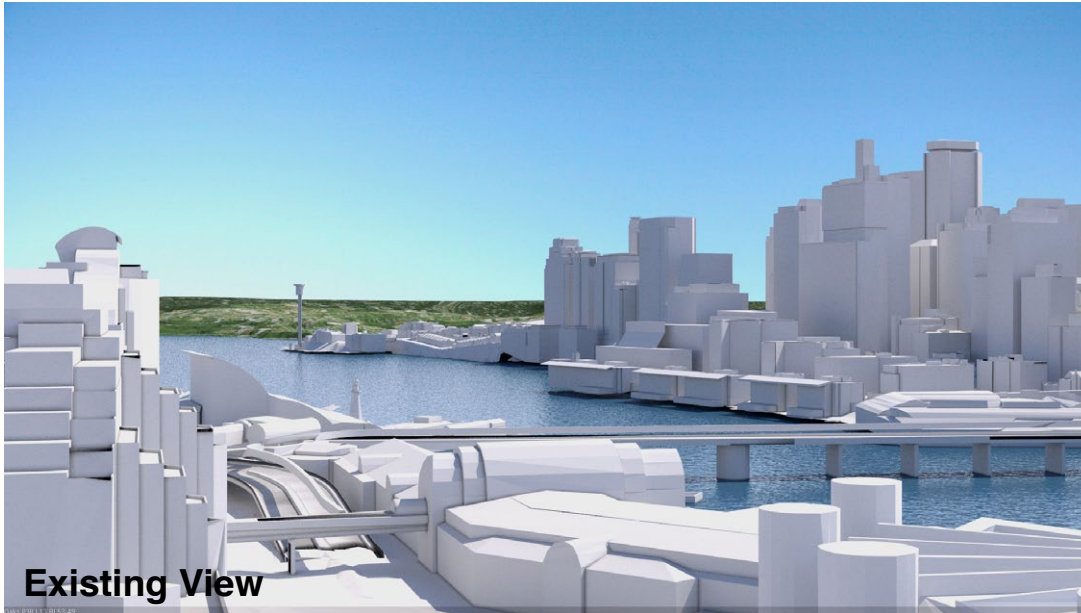
RL: 53.49 (Camera Height)

FOR INFORMATION ONLY

Illustrative designs of built forms in the Haymarket precinct do not form part of this development application (and will be the subject of separate development assessment processes) and is shown for information and broader illustrative purposes. These images are produced here for view analysis purposes only.

LEGEND: 63

- Key Building
- Neighbouring Buildings
- View Direction (50mm Camera)
- Camera Position



Oaks Goldsbrough Apartments

Position: P3B

Level: 10

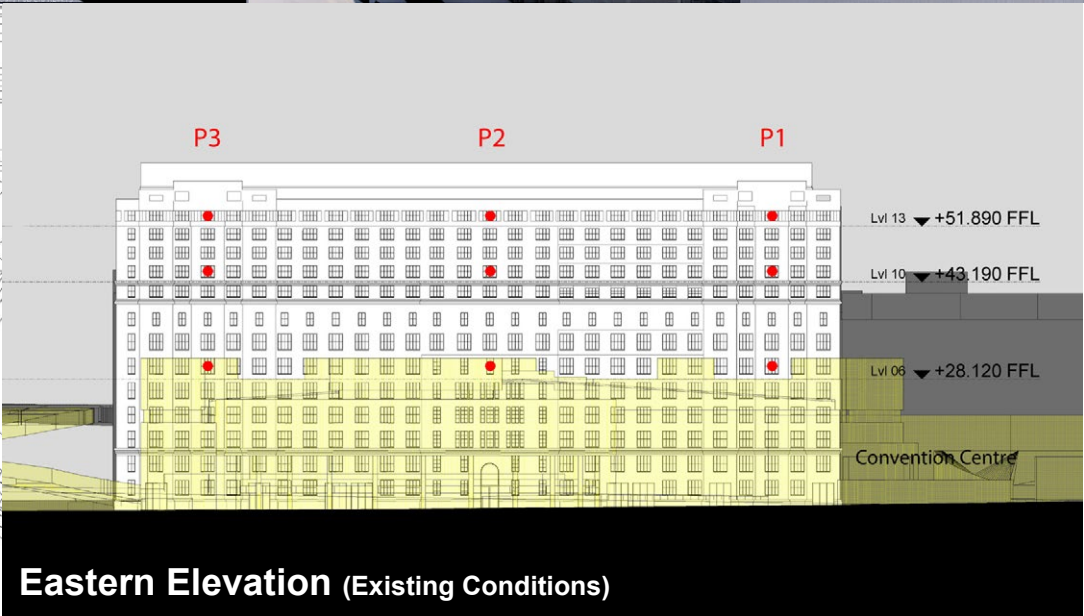
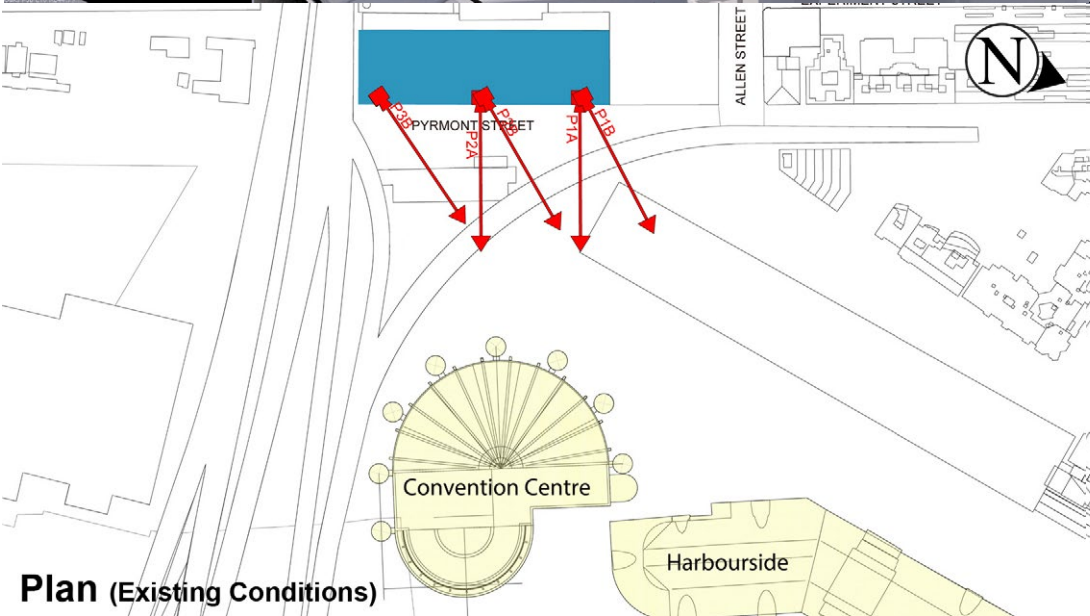
RL: 44.790 (Camera Height)

FOR INFORMATION ONLY

Illustrative designs of built forms in the Haymarket precinct do not form part of this development application (and will be the subject of separate development assessment processes) and is shown for information and broader illustrative purposes. These images are produced here for view analysis purposes only.

LEGEND: 64

- Key Building
- Neighbouring Buildings
- View Direction (50mm Camera)
- Camera Position



Oaks Goldsbrough Apartments

Position: P3B

Level: 06

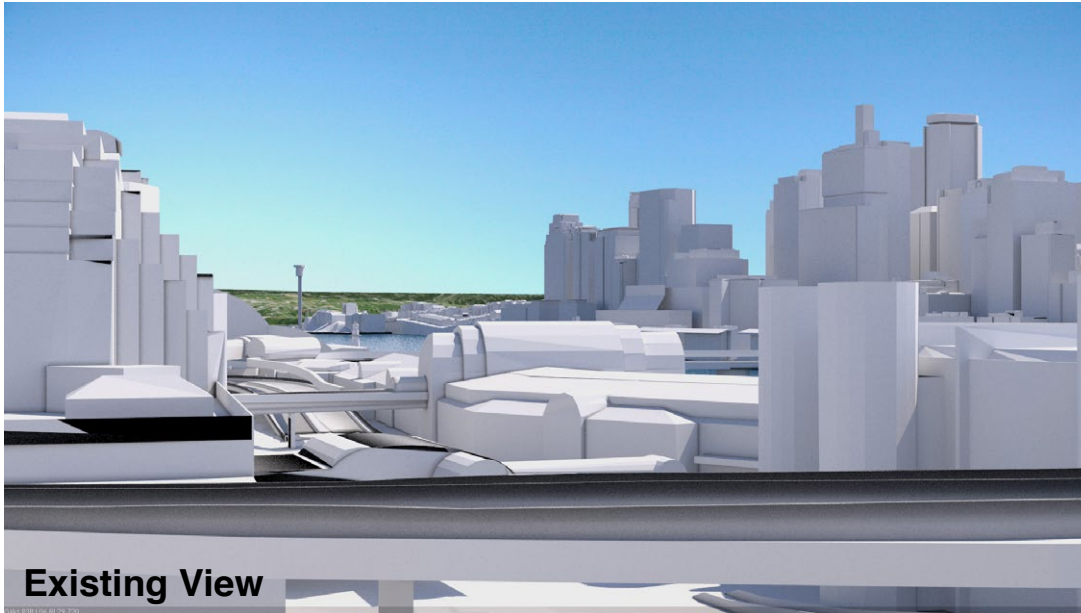
RL: 29.720 (Camera Height)

FOR INFORMATION ONLY

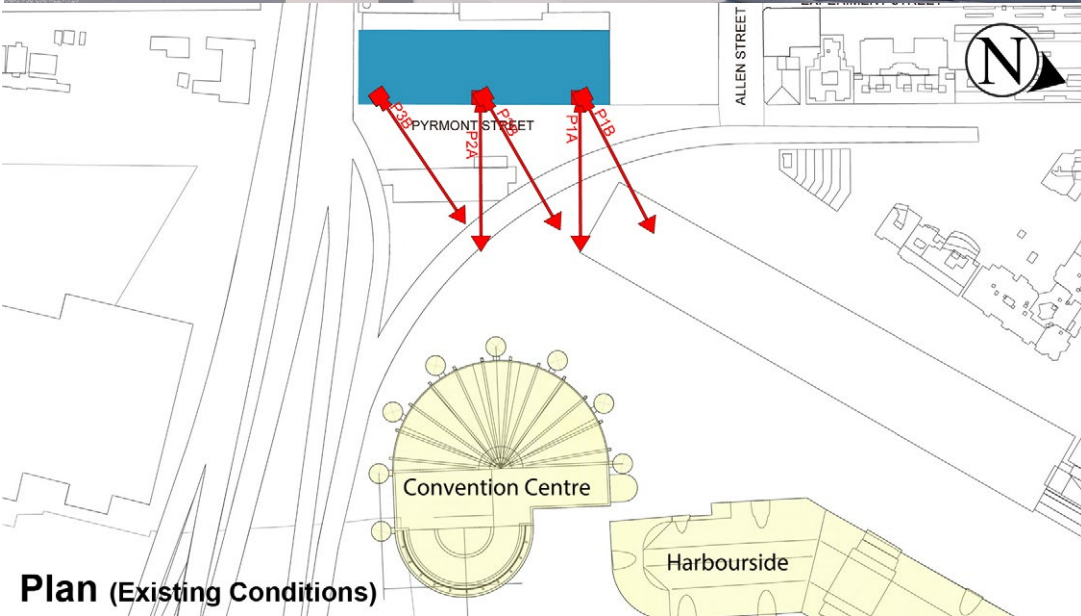
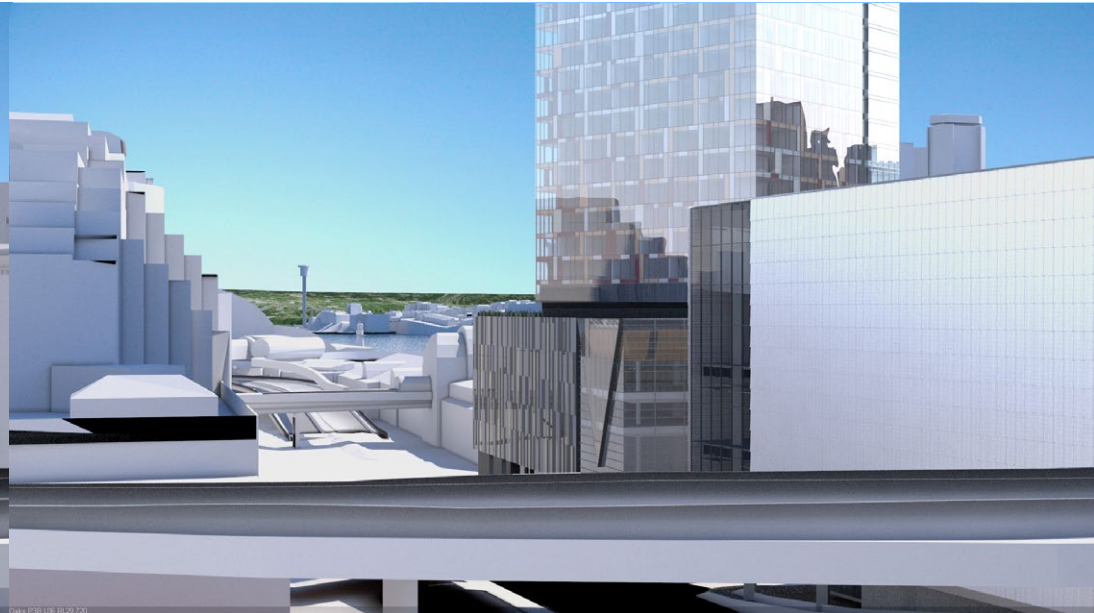
Illustrative designs of built forms in the Haymarket precinct do not form part of this development application (and will be the subject of separate development assessment processes) and is shown for information and broader illustrative purposes. These images are produced here for view analysis purposes only.

LEGEND: 65

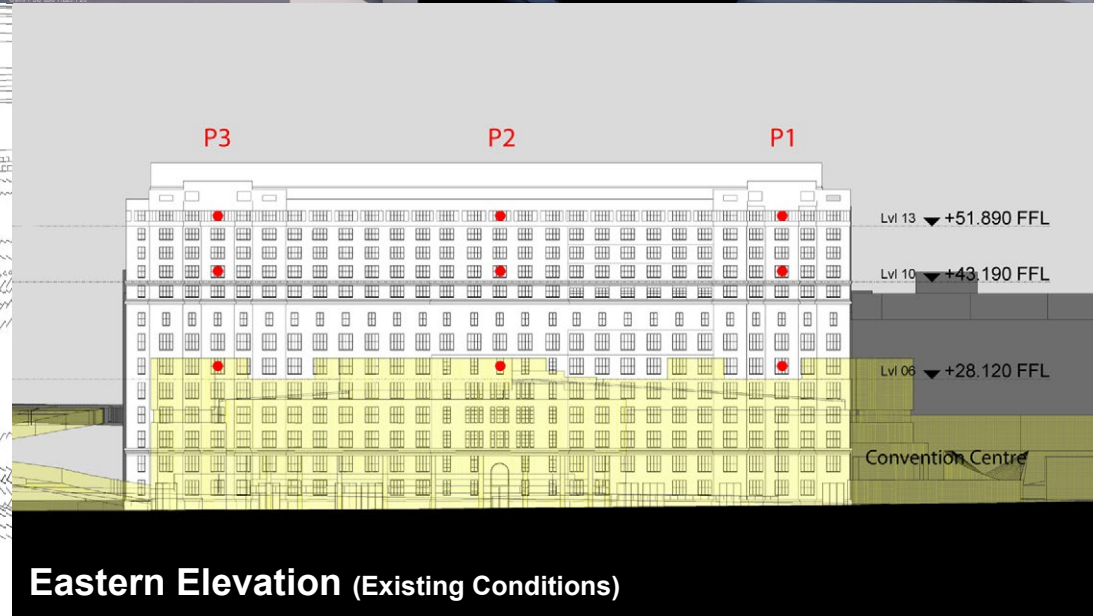
- Key Building
- Neighbouring Buildings
- View Direction (50mm Camera)
- Camera Position



Existing View



Plan (Existing Conditions)



Eastern Elevation (Existing Conditions)



SICEEP-Goldsbrough 651 EXISTING



SICEEP-Goldsbrough 651



SICEEP-Goldsbrough 959 E EXISTING



SICEEP-Goldsbrough 959 E



SICEEP-Goldsbrough 959 N EXISTING



SICEEP-Goldsbrough 959 N



SICEEP-Goltsbrough 959 NE EXISTING



SICEEP-Goltsbrough 959 NE



SICEEP-Goldsbrough 1330 NE Existing



SICEEP-Goldsbrough 1330 NE