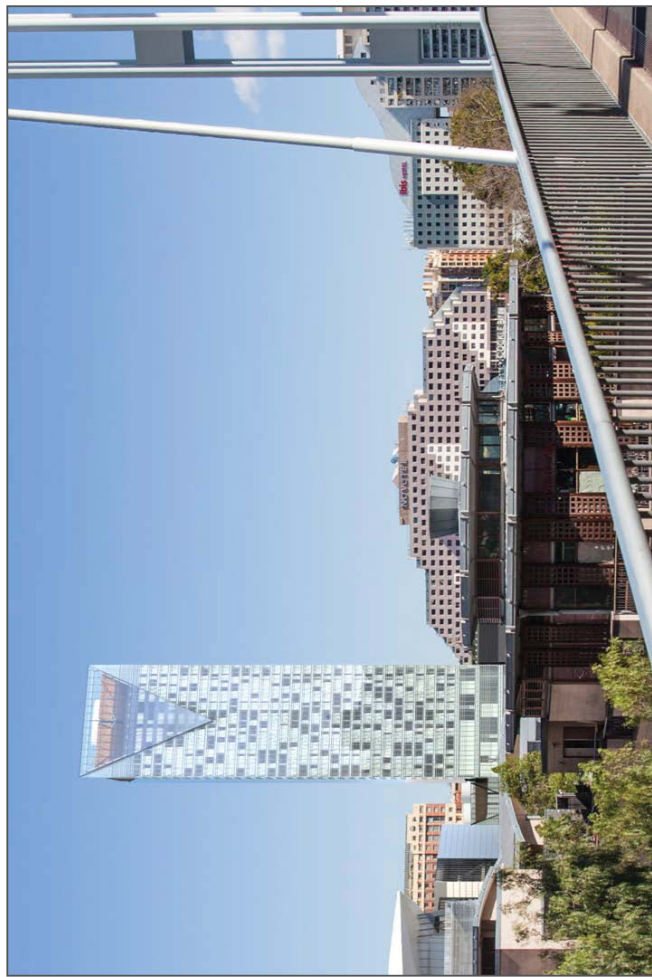


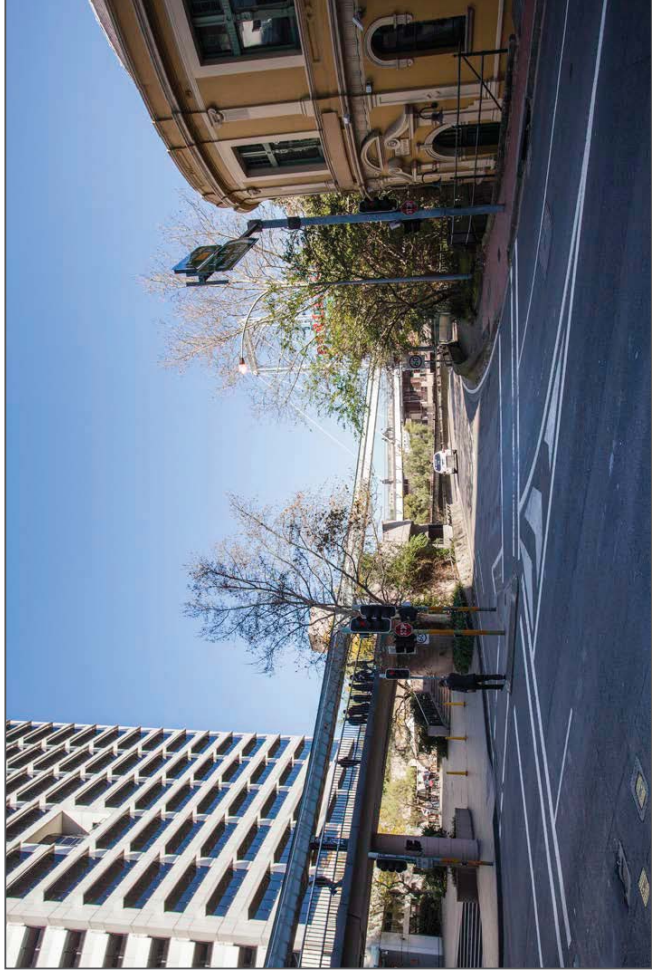


25mm - Photomontage with vertical correction

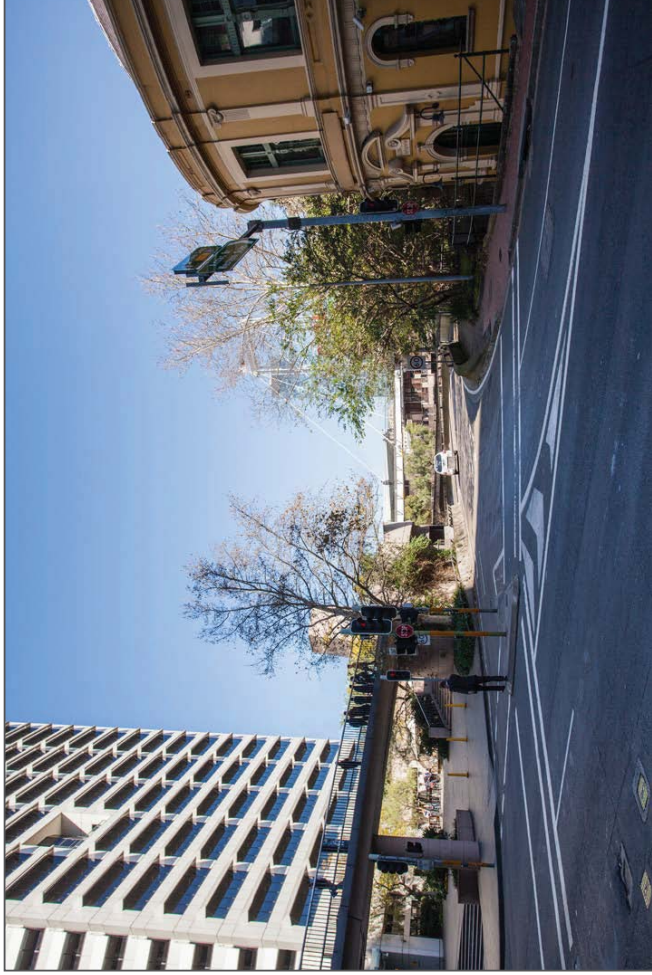


50mm - Photomontage with vertical correction

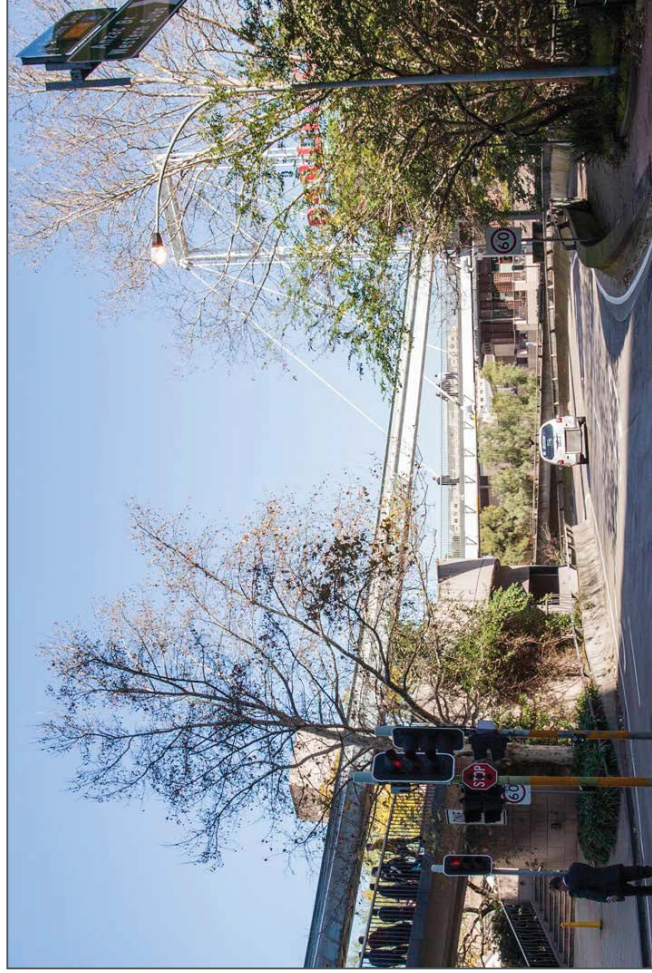
NOTE: THESE IMAGES ARE FOR INFORMATION ONLY.
They have been prepared for view analysis purposes only.



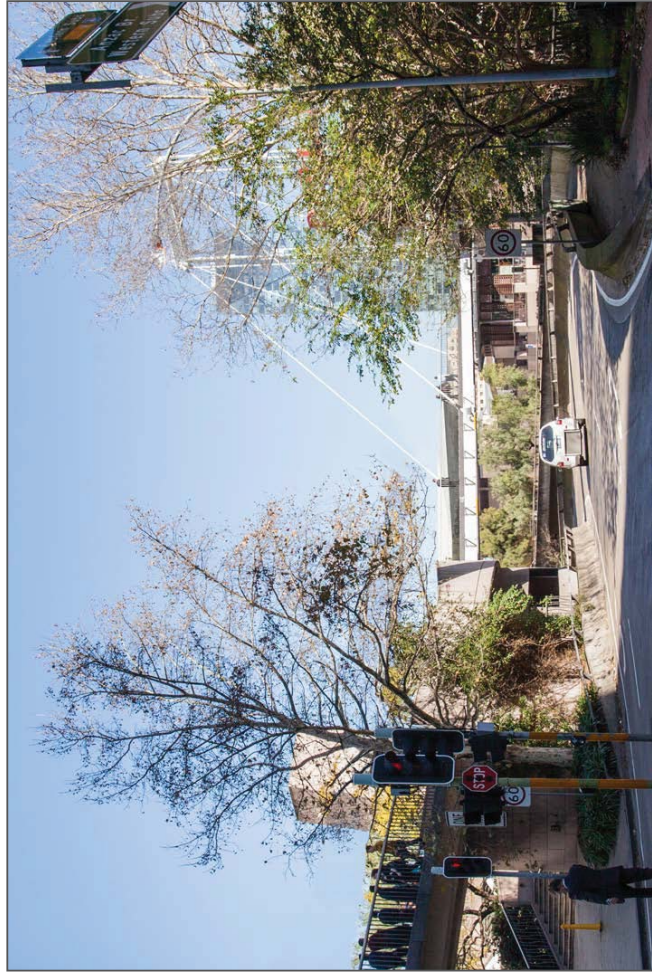
25mm - Original Image



25mm - Photomontage

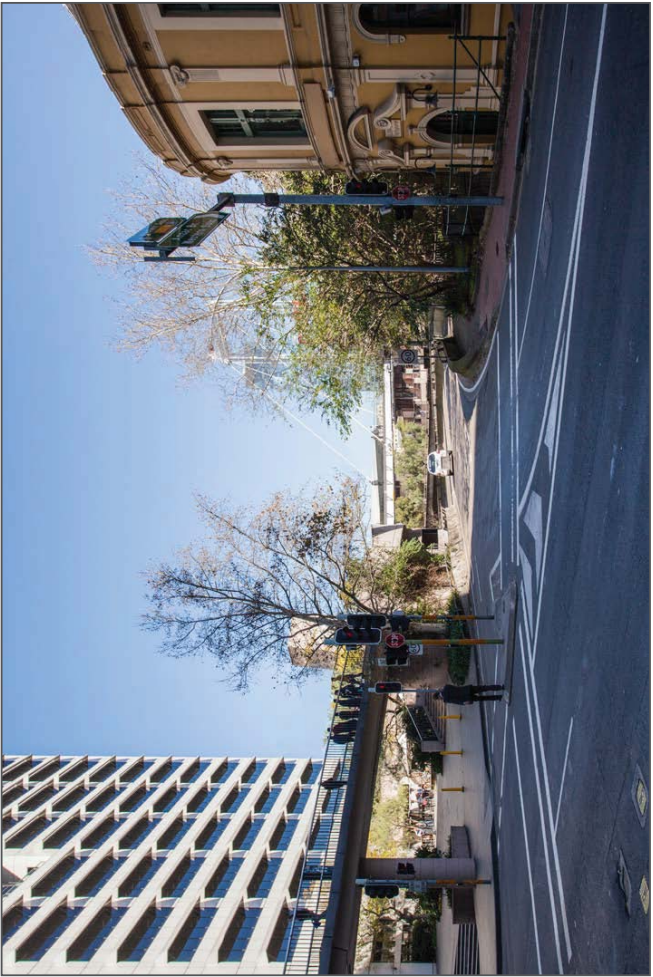


50mm - Original Image

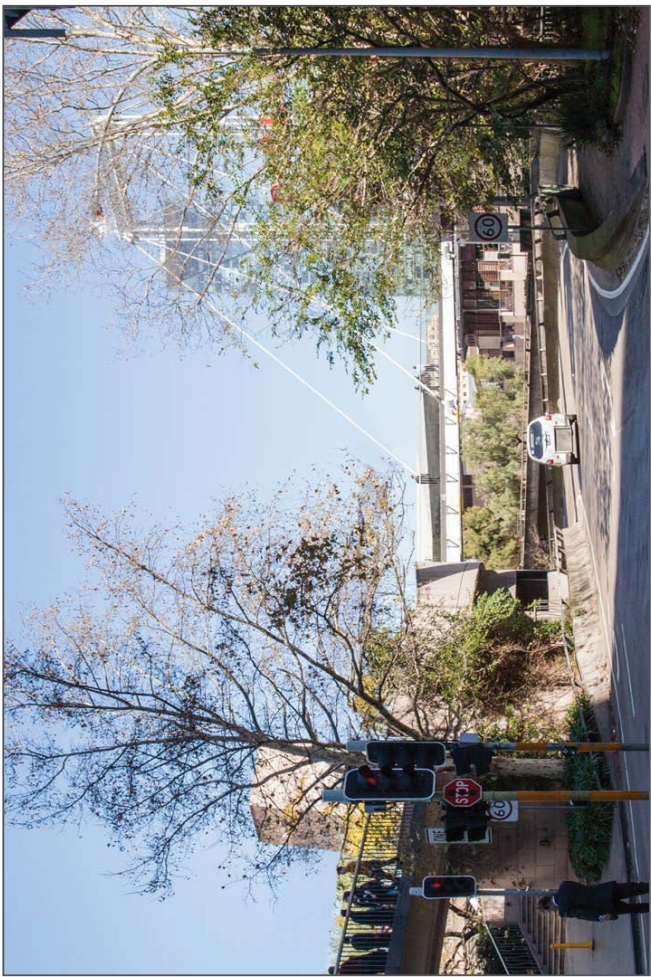


50mm - Photomontage

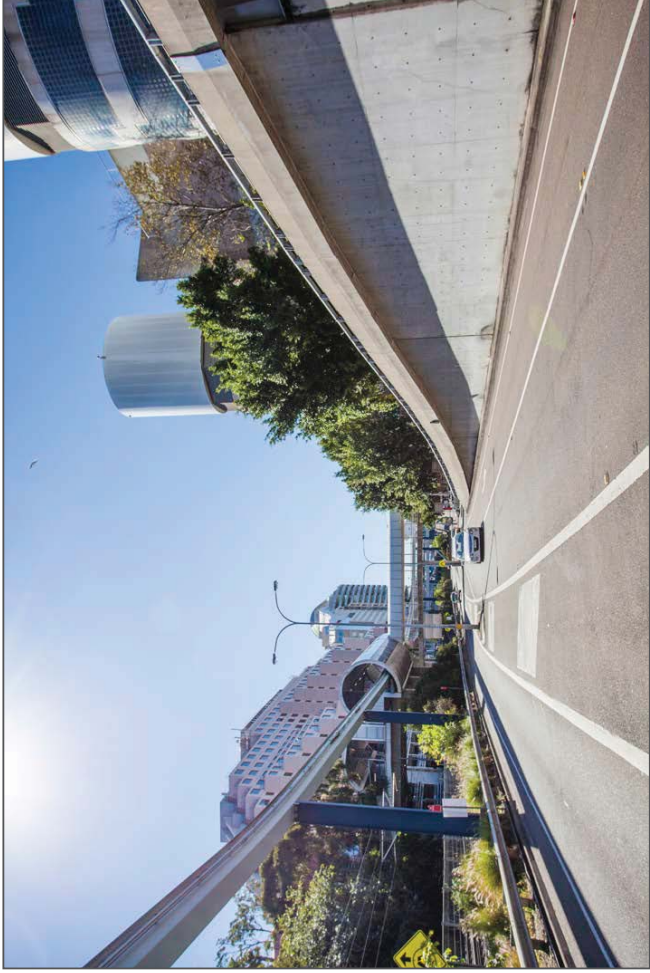
NOTE: THESE IMAGES ARE FOR INFORMATION ONLY.
They have been prepared for view analysis purposes only.



25mm - Photomontage with vertical correction



50mm - Photomontage with vertical correction



25mm - Original Image



25mm - Photomontage



50mm - Original Image



50mm - Photomontage

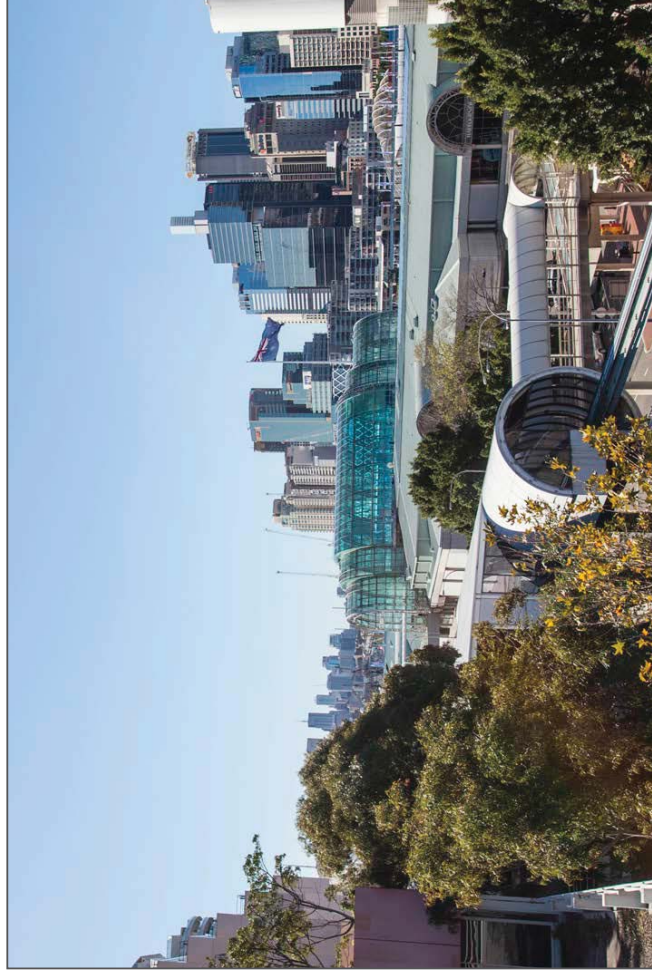
NOTE: THESE IMAGES ARE FOR INFORMATION ONLY.
They have been prepared for view analysis purposes only.



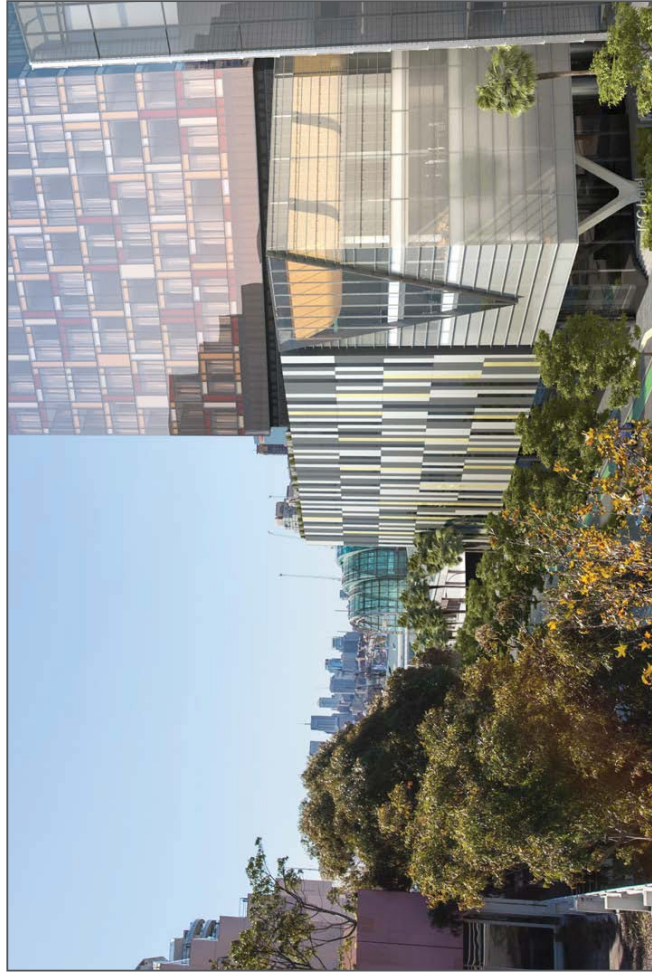
25mm - Original Image



25mm - Photomontage



50mm - Original Image

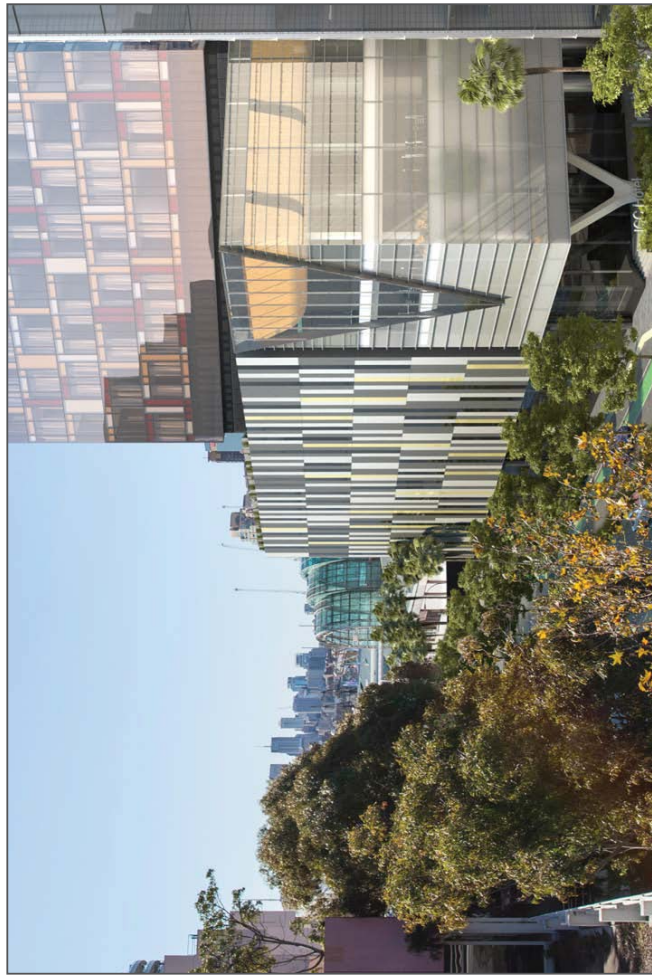


50mm - Photomontage

NOTE: THESE IMAGES ARE FOR INFORMATION ONLY.
They have been prepared for view analysis purposes only.

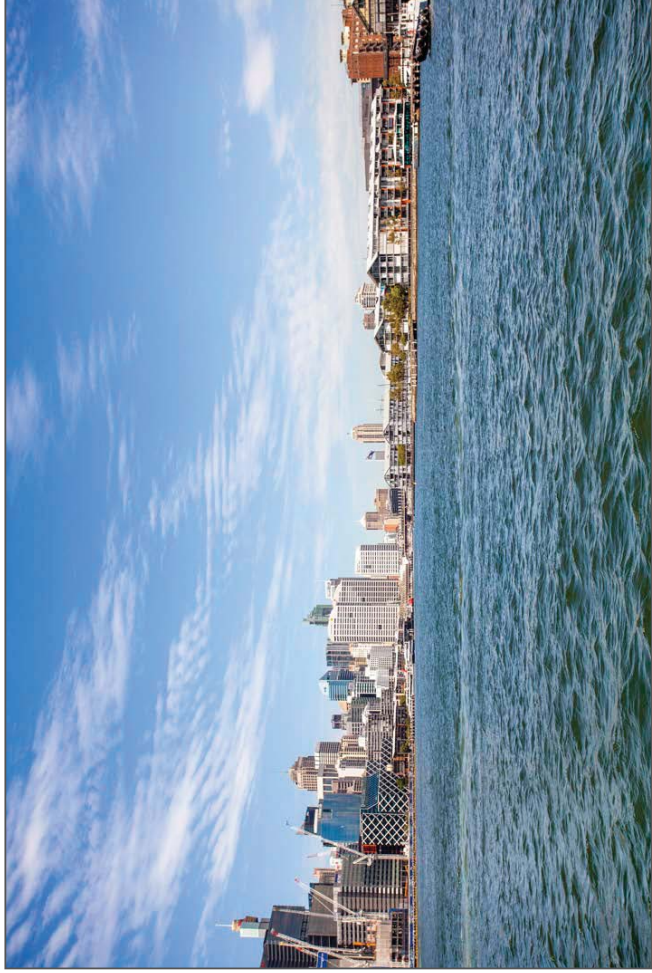


25mm - Photomontage with vertical correction



50mm - Photomontage with vertical correction

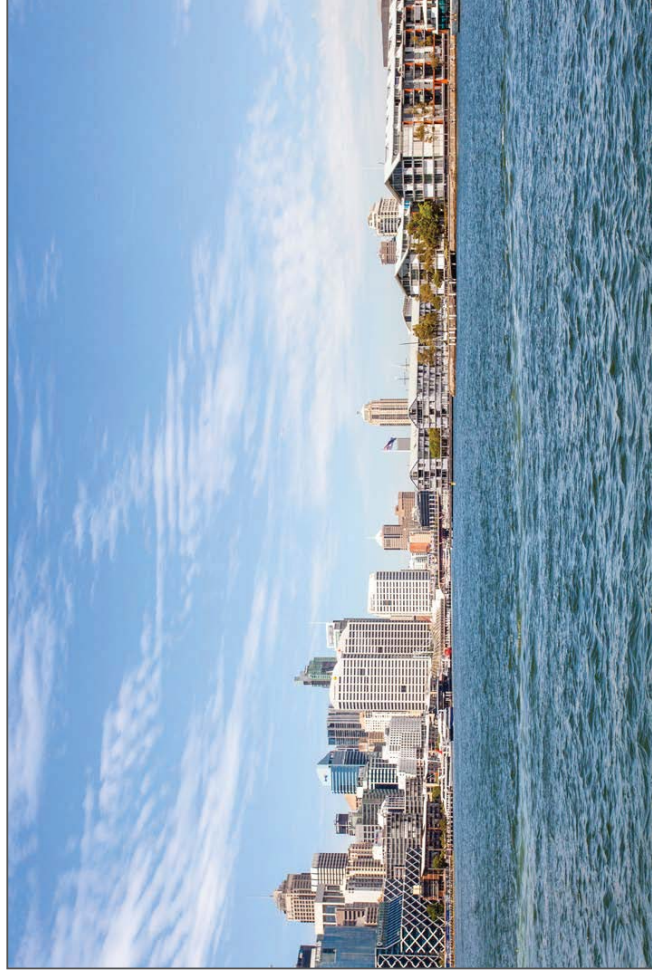
NOTE: THESE IMAGES ARE FOR INFORMATION ONLY.
They have been prepared for view analysis purposes only.



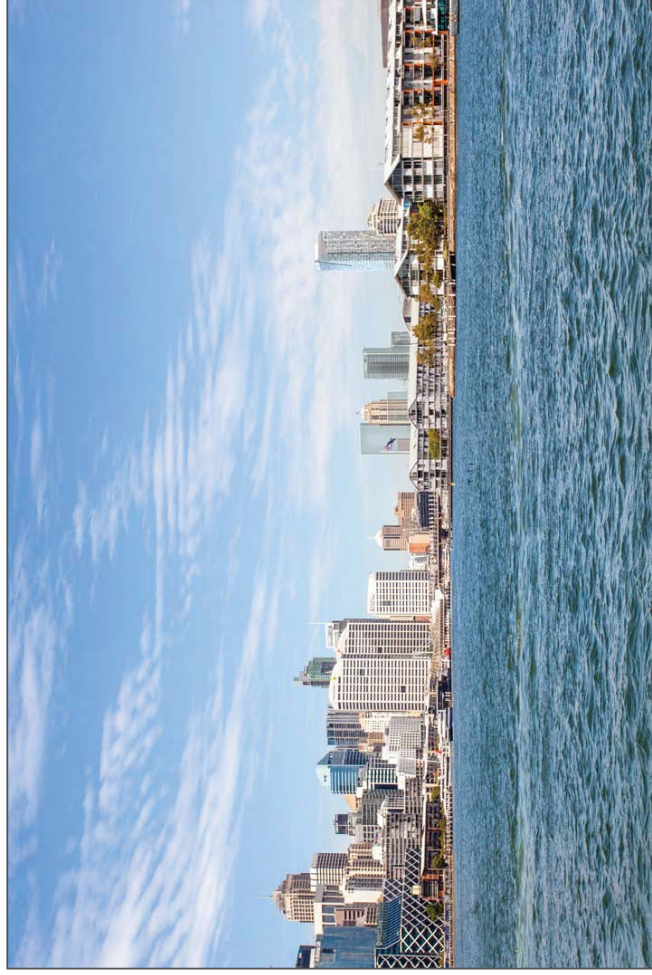
35mm - Original Image



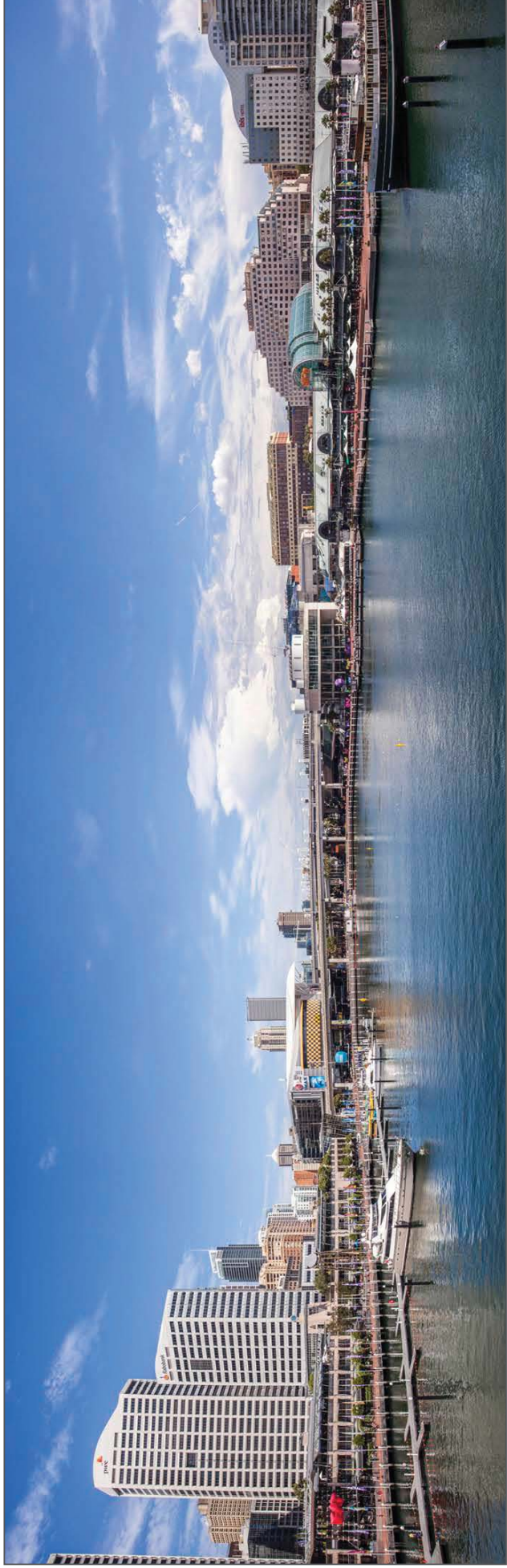
35mm - Photomontage



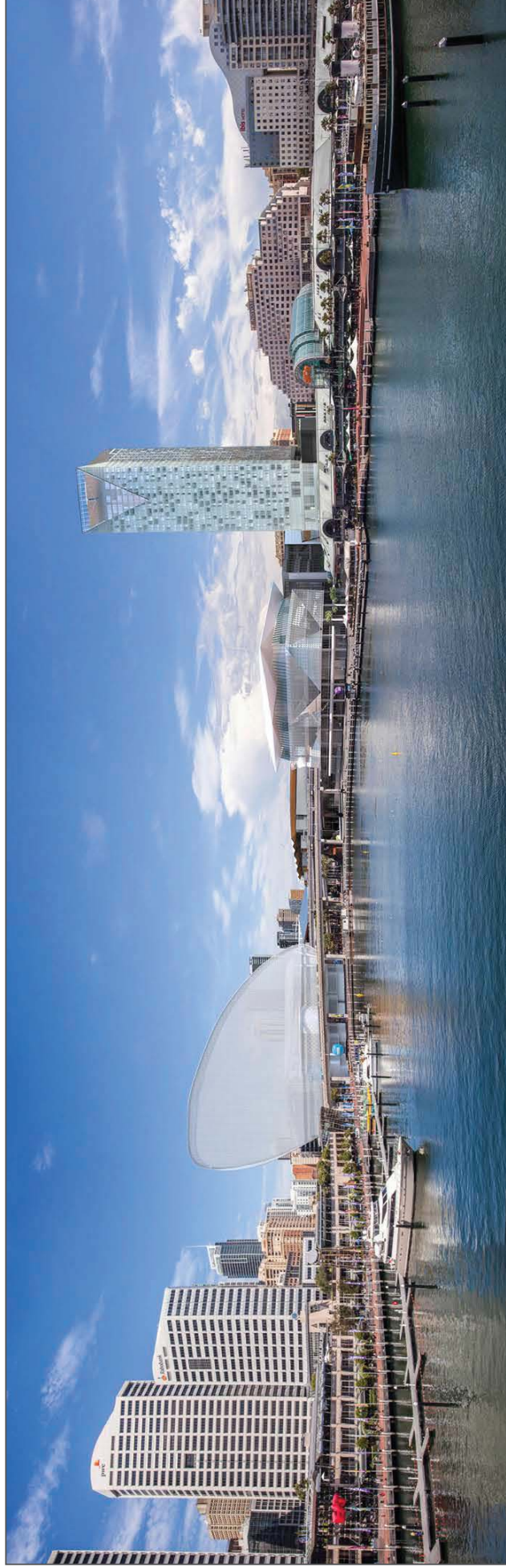
50mm - Original Image



50mm - Photomontage



3 x 24mm - Original Image



3 x 24mm - Photomontage

NOTE: THESE IMAGES ARE FOR INFORMATION ONLY.
They have been prepared for view analysis purposes only.



3 x 26mm - Original Image



3 x 26mm - Photomontage

NOTE: THESE IMAGES ARE FOR INFORMATION ONLY.
They have been prepared for view analysis purposes only.

Appendix 2

Appendix 2

TAB 1 – NOVOTEL

Novotel Sydney Darling Harbour

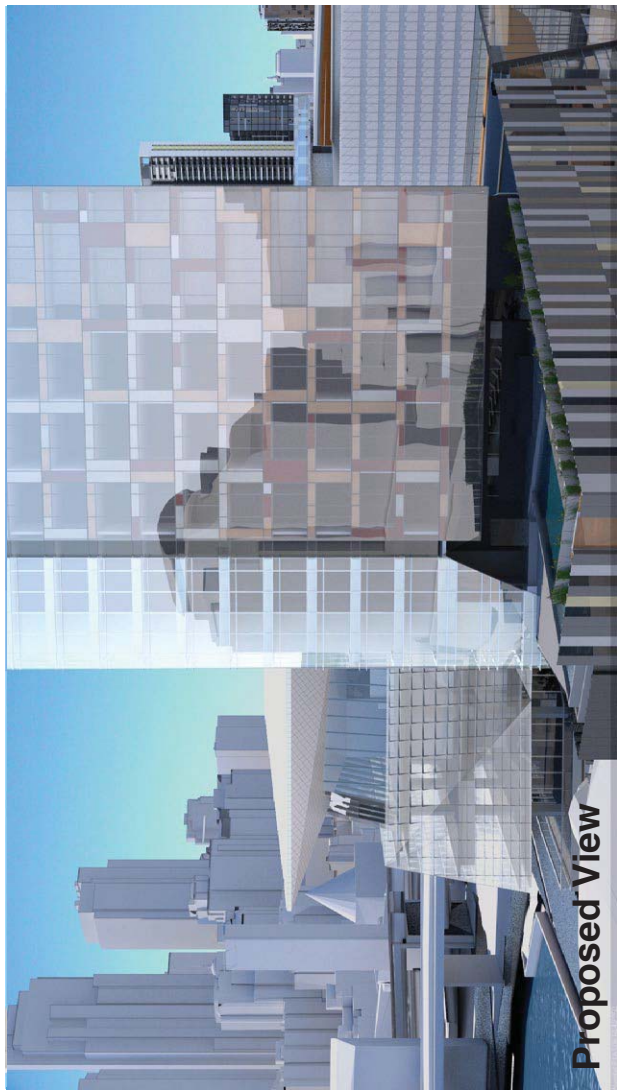
Position: P1A

Level: 08

RL: 42.250 (Camera Height)

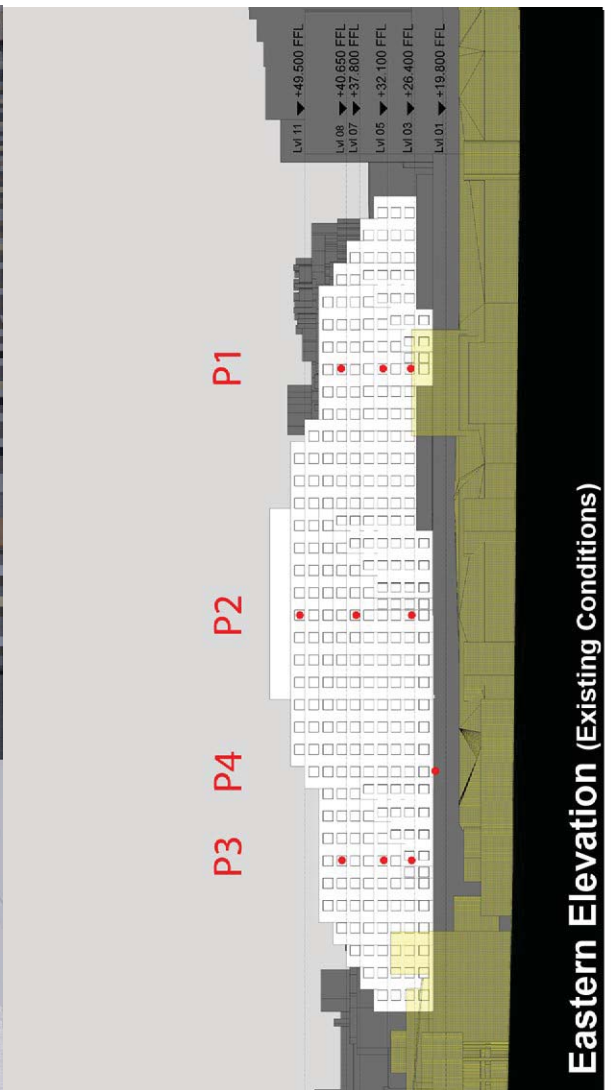
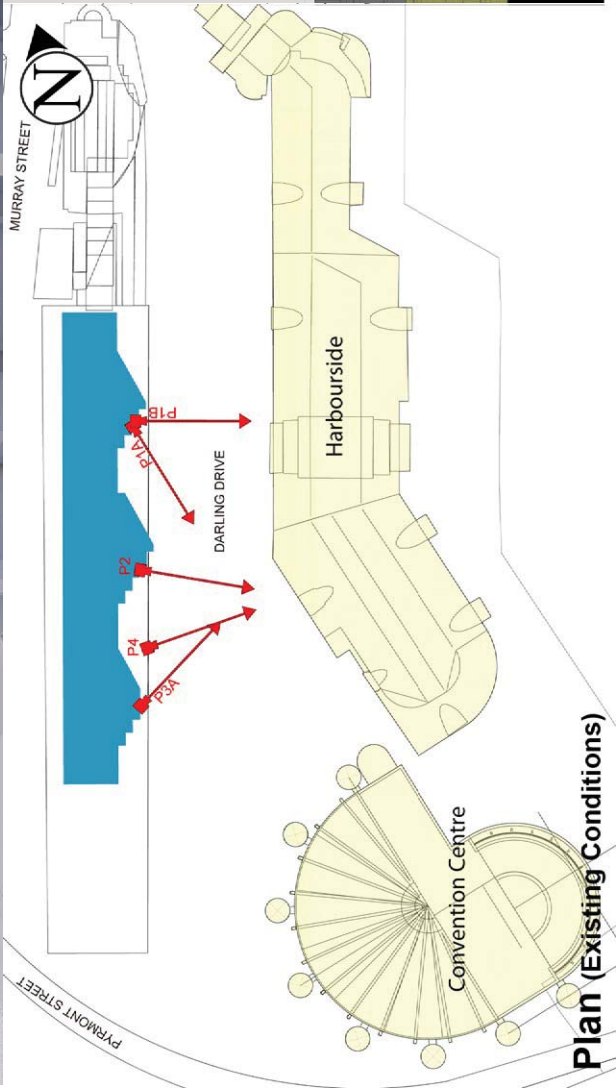
FOR INFORMATION ONLY

Illustrative designs of built forms in the Haymarket precinct do not form part of this development application (and will be the subject of separate development assessment processes) and is shown for information and broader illustrative purposes. These images are produced here for view analysis purposes only.



LEGEND:

- Key Building
- Neighbouring Buildings
- View Direction (50mm Camera)
- Camera Position



Novotel Sydney Darling Harbour

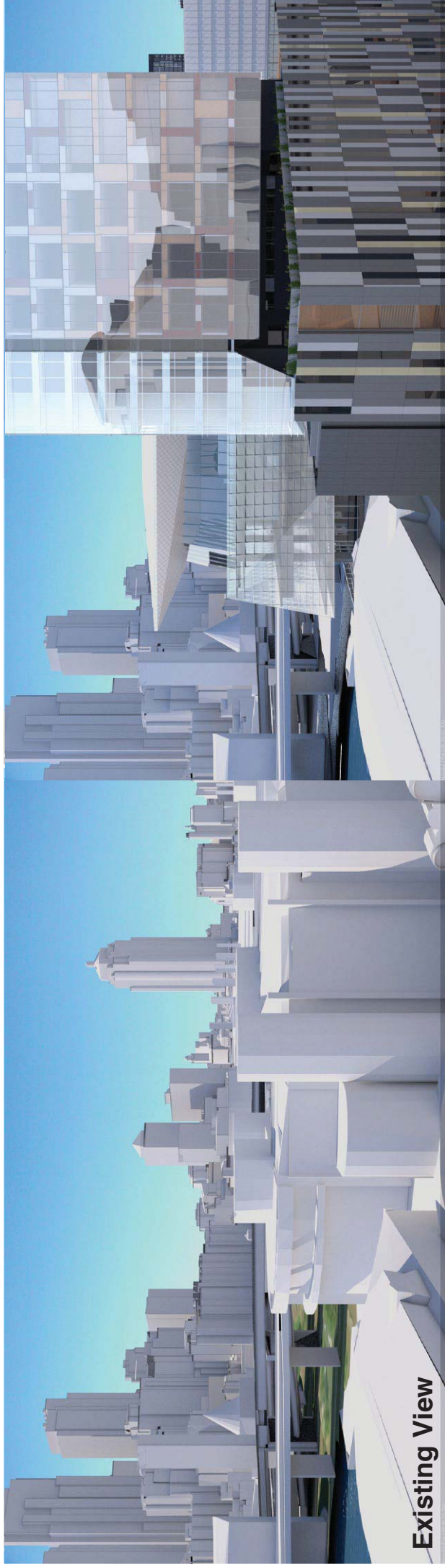
Position: P1A

Level: 05

RL: 33.700 (Camera Height)

FOR INFORMATION ONLY

Illustrative designs of built forms in the Haymarket precinct do not form part of this development application (and will be the subject of separate development assessment processes) and is shown for information and broader illustrative purposes. These images are produced here for view analysis purposes only.



Existing View

LEGEND:



Key Building



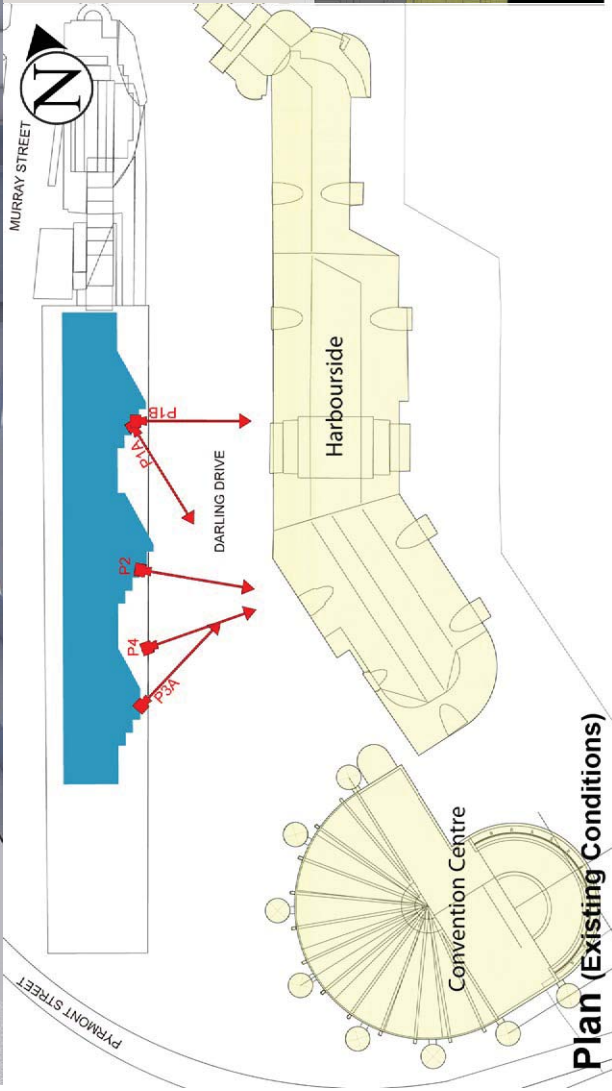
Neighbouring Buildings



View Direction (50mm Camera)



Camera Position



Plan (Existing Conditions)

Eastern Elevation (Existing Conditions)

Novotel Sydney Darling Harbour

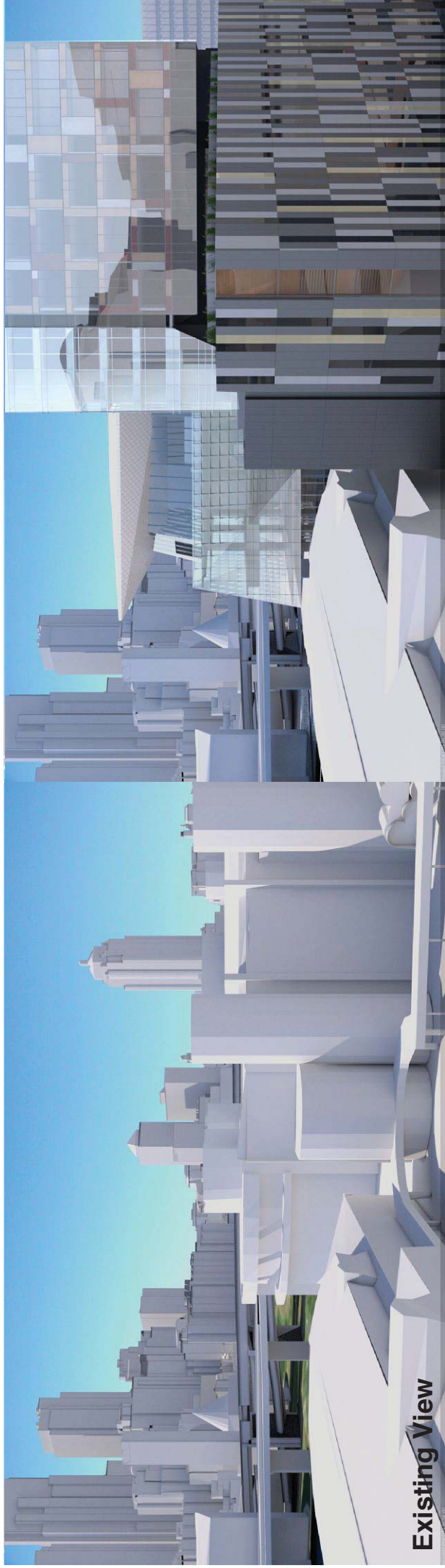
Position: P1A

Level: 03

RL: 28.00 (Camera Height)

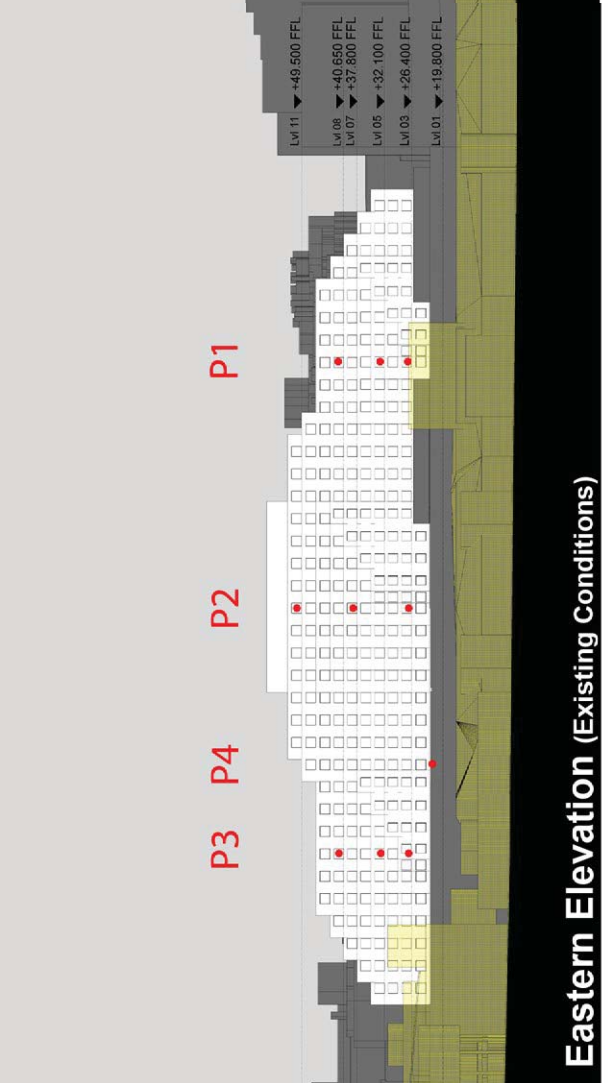
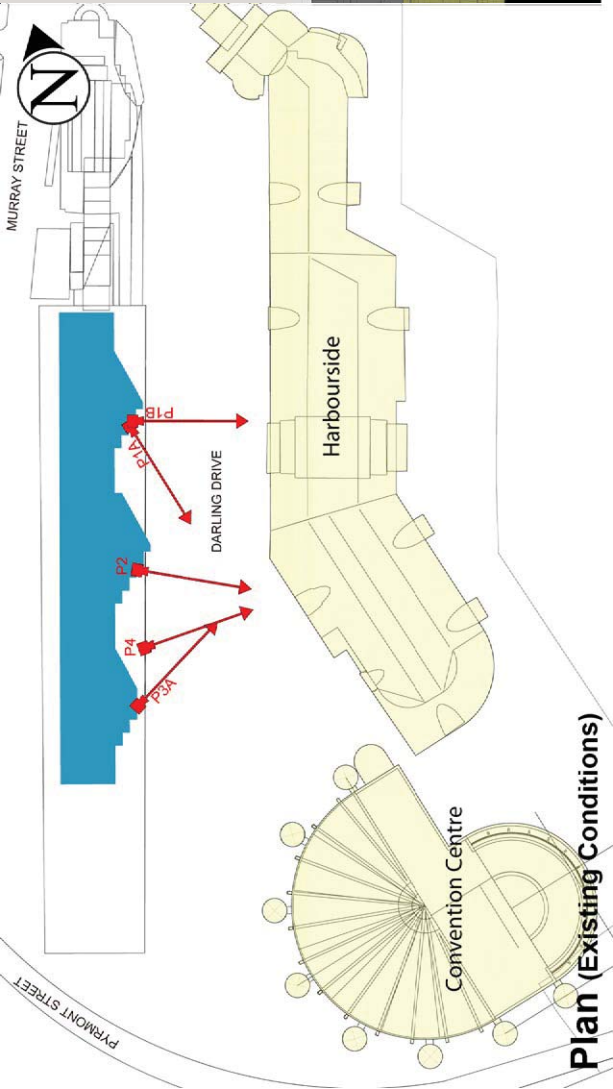
FOR INFORMATION ONLY

Illustrative designs of built forms in the Haymarket precinct do not form part of this development application (and will be the subject of separate development assessment processes) and is shown for information and broader illustrative purposes. These images are produced here for view analysis purposes only.



LEGEND:

- Key Building
- Neighbouring Buildings
- View Direction (50mm Camera)
- Camera Position



Novotel Sydney Darling Harbour

Position: P1B

Level: 08

RL: 42.250 (Camera Height)

FOR INFORMATION ONLY

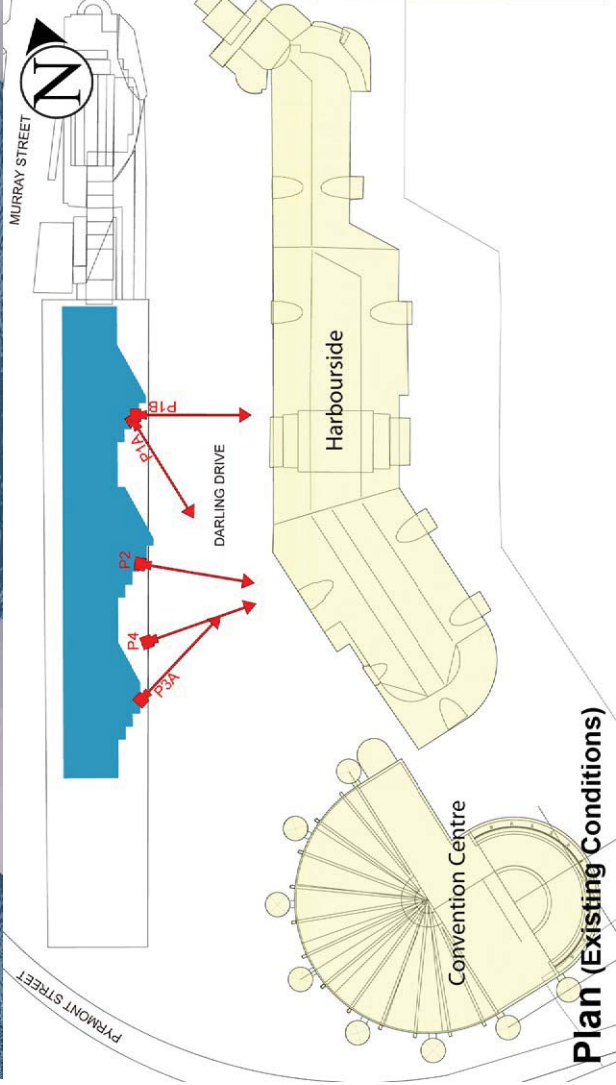
Illustrative designs of built forms in the Haymarket precinct do not form part of this development application (and will be the subject of separate development assessment processes) and is shown for information and broader illustrative purposes. These images are produced here for view analysis purposes only.



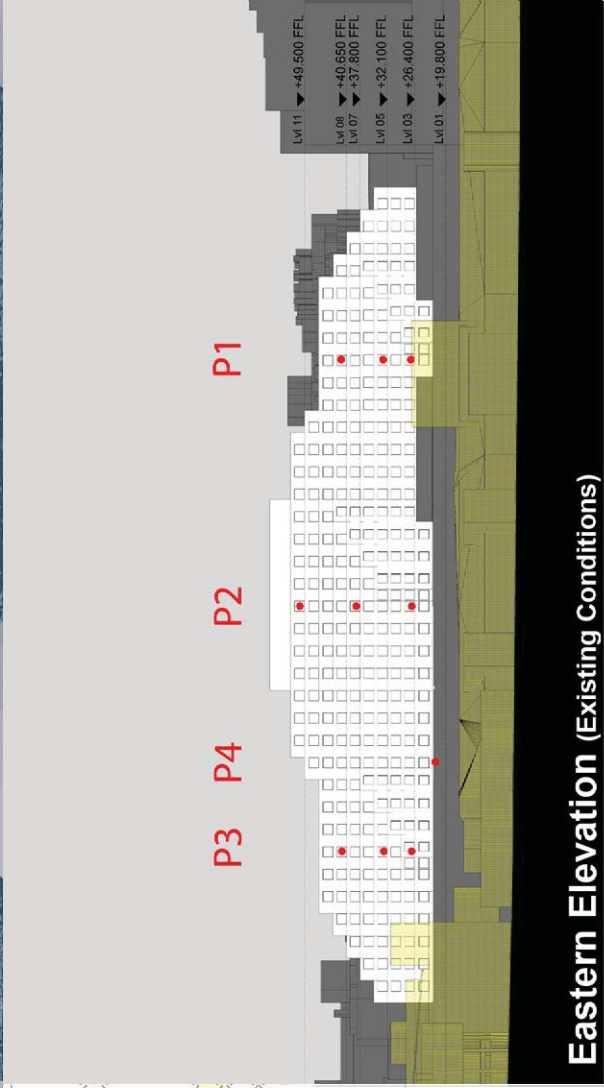
Existing View

LEGEND:

- Key Building
- Neighbouring Buildings
- View Direction (50mm Camera)
- Camera Position



Plan (Existing Conditions)



Eastern Elevation (Existing Conditions)

Novotel Sydney Darling Harbour

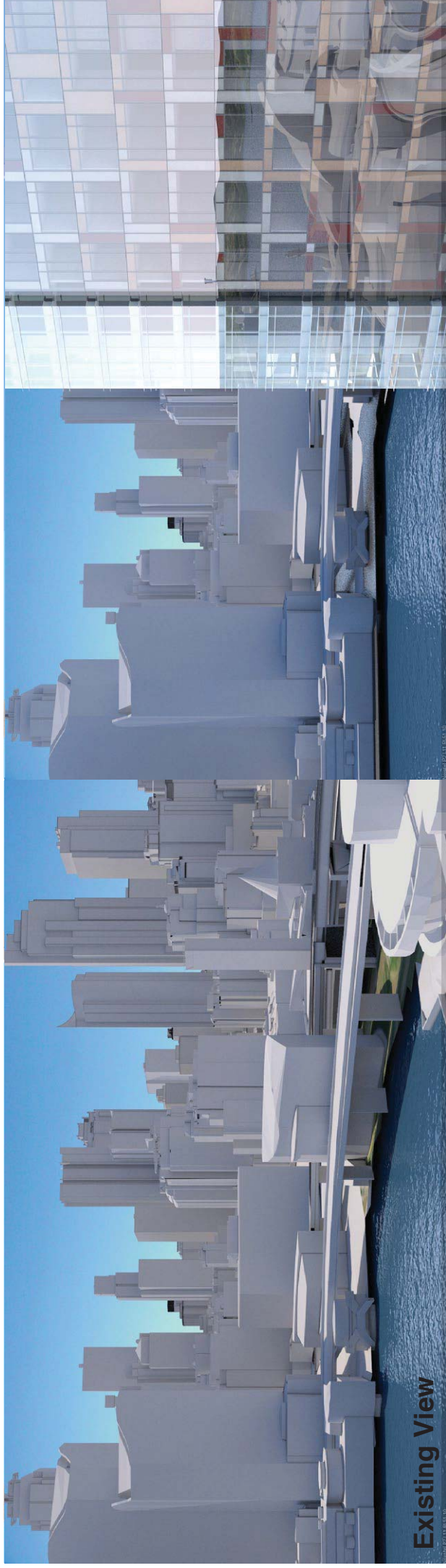
Position: P2

Level: 11

RL: 51.10 (Camera Height)

FOR INFORMATION ONLY

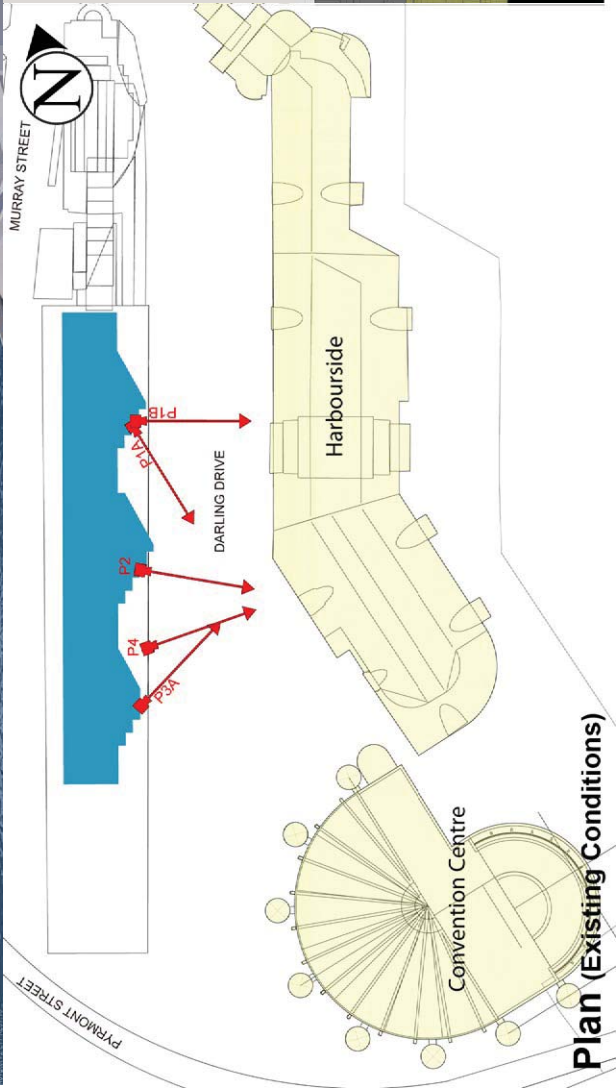
Illustrative designs of built forms in the Haymarket precinct do not form part of this development application (and will be the subject of separate development assessment processes) and is shown for information and broader illustrative purposes. These images are produced here for view analysis purposes only.



Existing View

LEGEND:

- Key Building
- Neighbouring Buildings
- View Direction (50mm Camera)
- Camera Position



Plan (Existing Conditions)

Eastern Elevation (Existing Conditions)

Novotel Sydney Darling Harbour

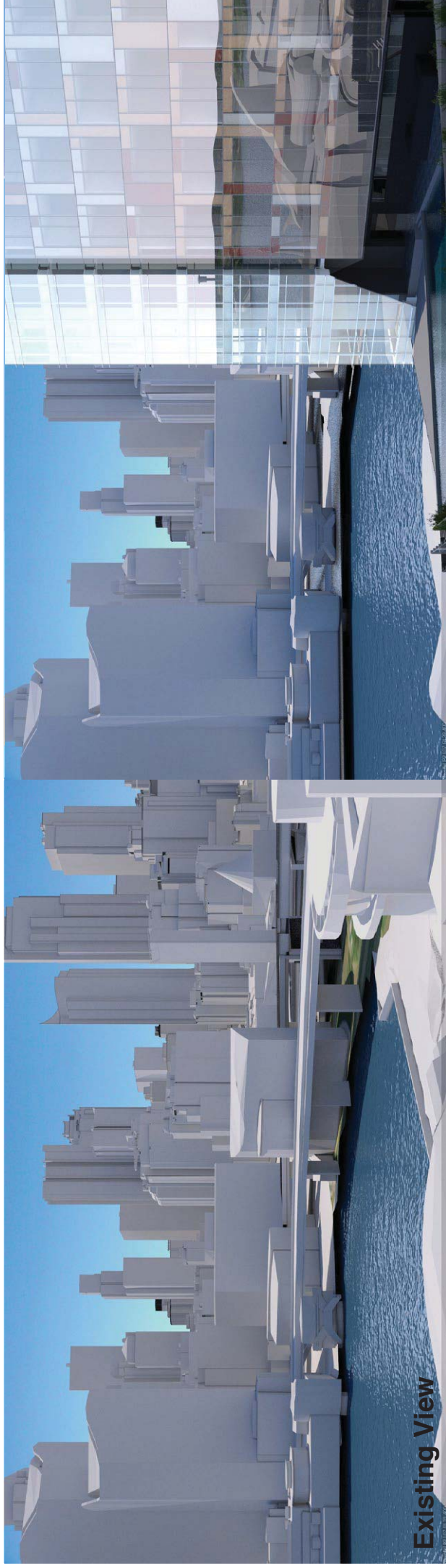
Position: P2

Level: 07

RL: 39.400 (Camera Height)

FOR INFORMATION ONLY

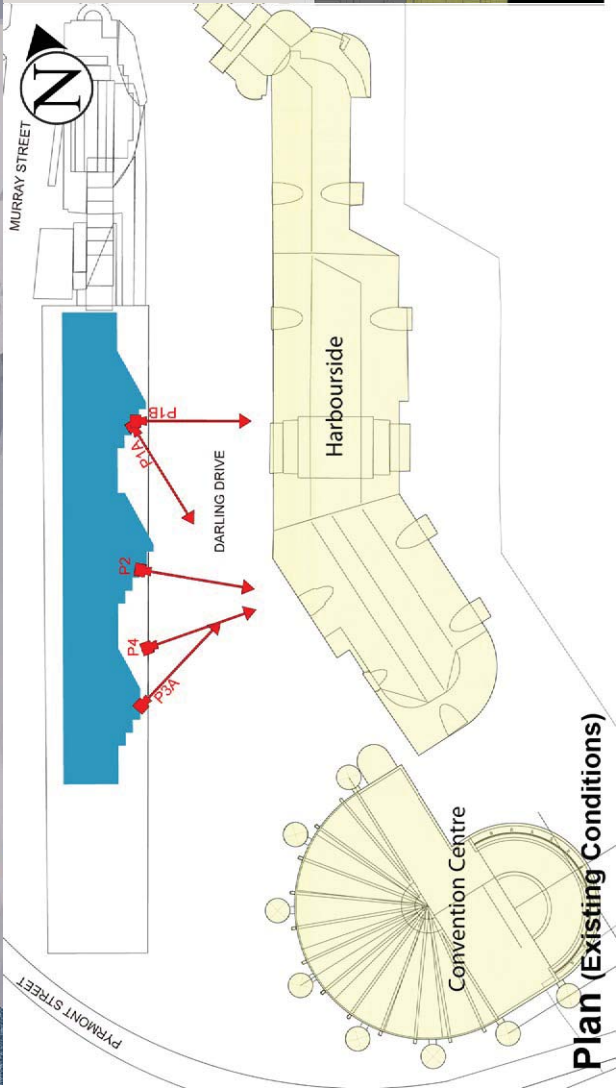
Illustrative designs of built forms in the Haymarket precinct do not form part of this development application (and will be the subject of separate development assessment processes) and is shown for information and broader illustrative purposes. These images are produced here for view analysis purposes only.



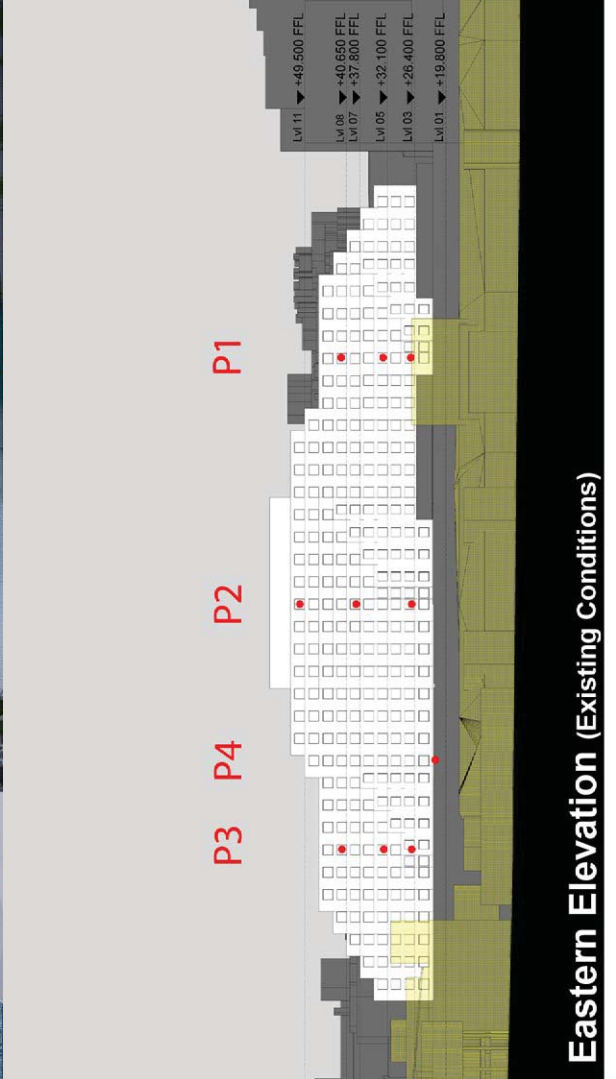
Existing View

LEGEND:

- Key Building
- Neighbouring Buildings
- View Direction (50mm Camera)
- Camera Position



Plan (Existing Conditions)



Eastern Elevation (Existing Conditions)

Novotel Sydney Darling Harbour

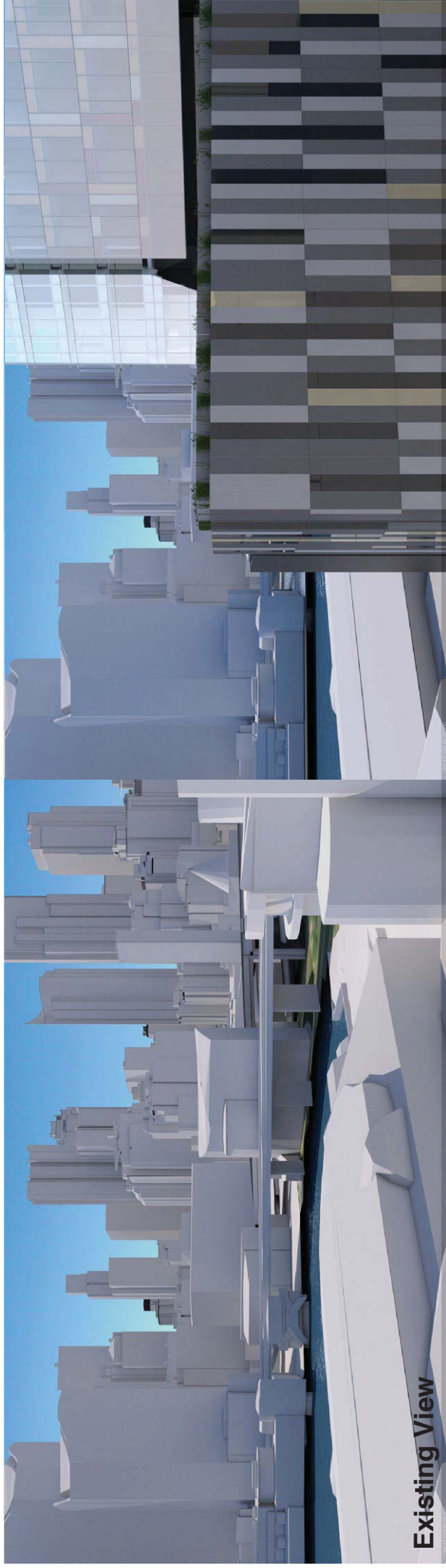
Position: P2

Level: 03

RL: 28.000 (Camera Height)

FOR INFORMATION ONLY

Illustrative designs of built forms in the Haymarket precinct do not form part of this development application (and will be the subject of separate development assessment processes) and is shown for information and broader illustrative purposes. These images are produced here for view analysis purposes only.



LEGEND: 31



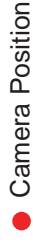
Key Building



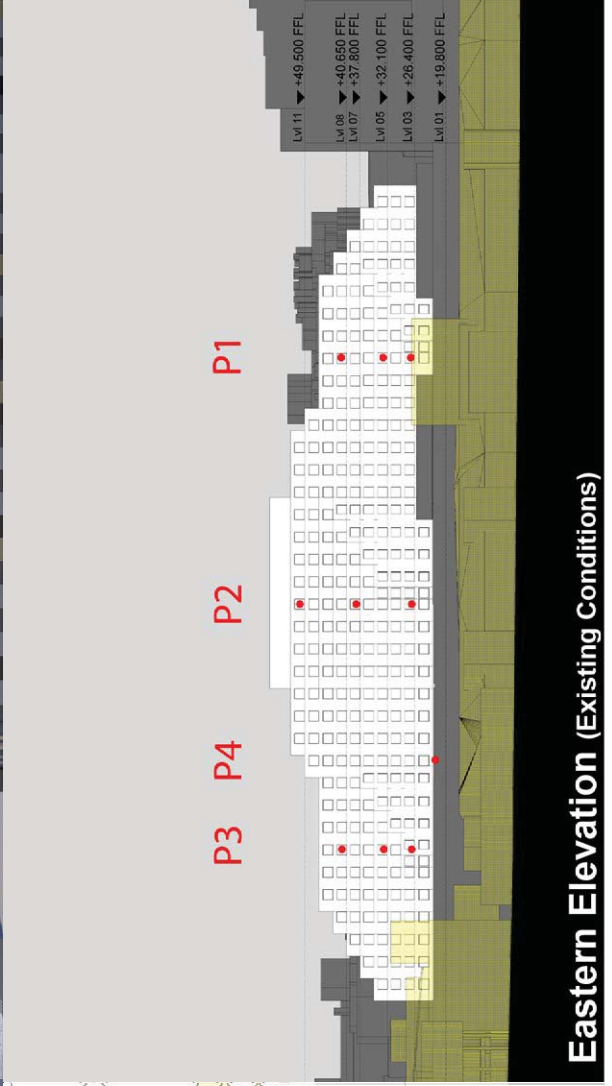
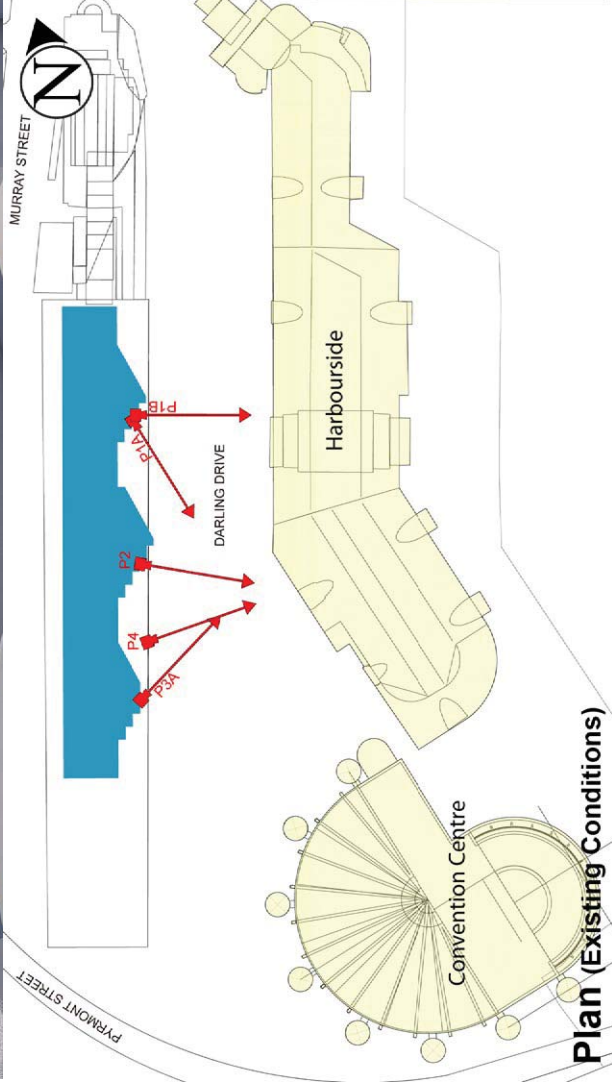
Neighbouring Buildings



View Direction (50mm Camera)



Camera Position



Eastern Elevation (Existing Conditions)

Novotel Sydney Darling Harbour

Position: P3A

Level: 08

RL: 42.250 (Camera Height)

FOR INFORMATION ONLY

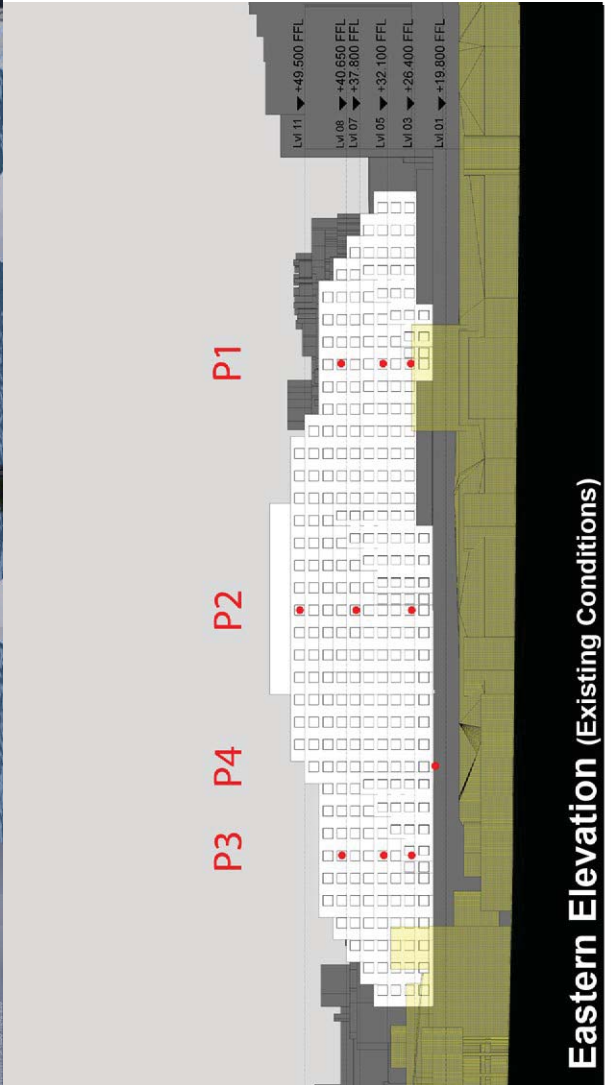
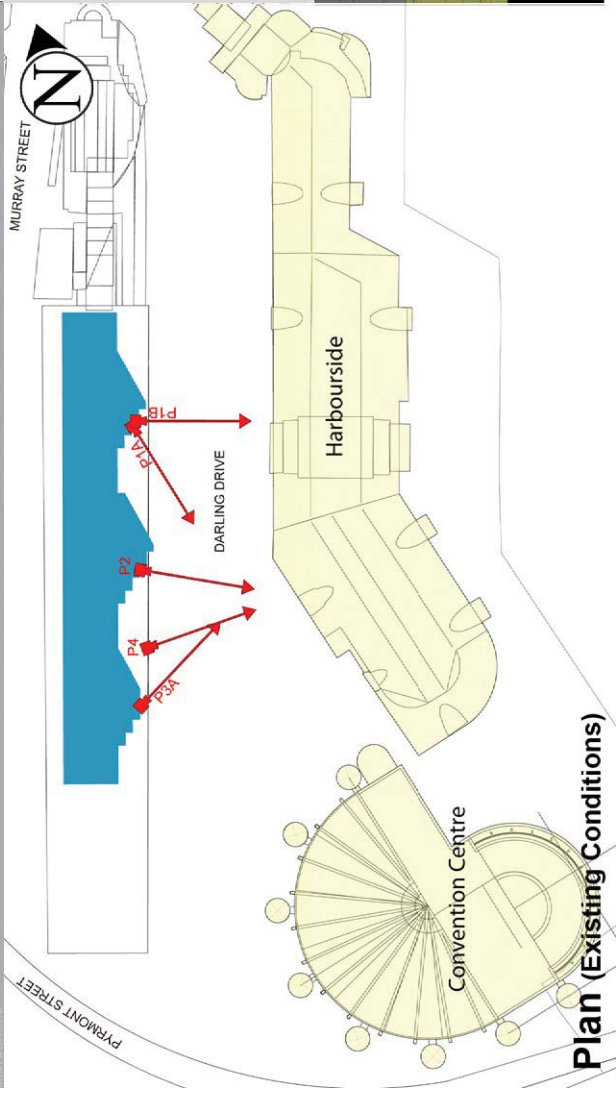
Illustrative designs of built forms in the Haymarket precinct do not form part of this development application (and will be the subject of separate development assessment processes) and is shown for information and broader illustrative purposes. These images are produced here for view analysis purposes only.



32

LEGEND:

- Key Building
- Neighbouring Buildings
- View Direction (50mm Camera)
- Camera Position



Novotel Sydney Darling Harbour

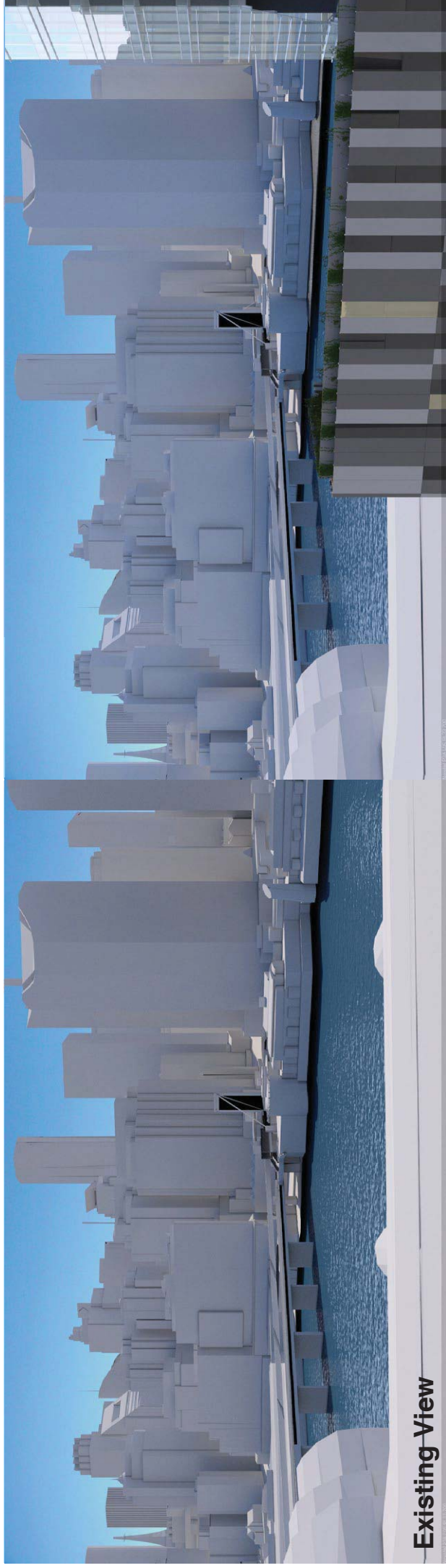
Position: P3A

Level: 05

RL: 33.700 (Camera Height)

FOR INFORMATION ONLY

Illustrative designs of built forms in the Haymarket precinct do not form part of this development application (and will be the subject of separate development assessment processes) and is shown for information and broader illustrative purposes. These images are produced here for view analysis purposes only.

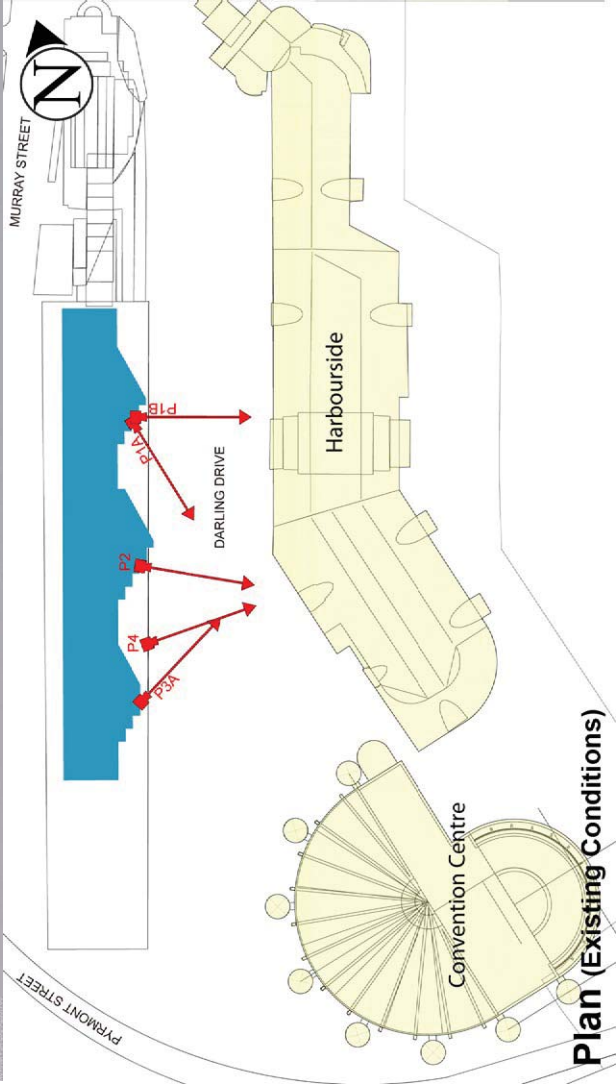


Existing View

33

LEGEND:

- Key Building
- Neighbouring Buildings
- View Direction (50mm Camera)
- Camera Position



Plan (Existing Conditions)

Eastern Elevation (Existing Conditions)

Novotel Sydney Darling Harbour

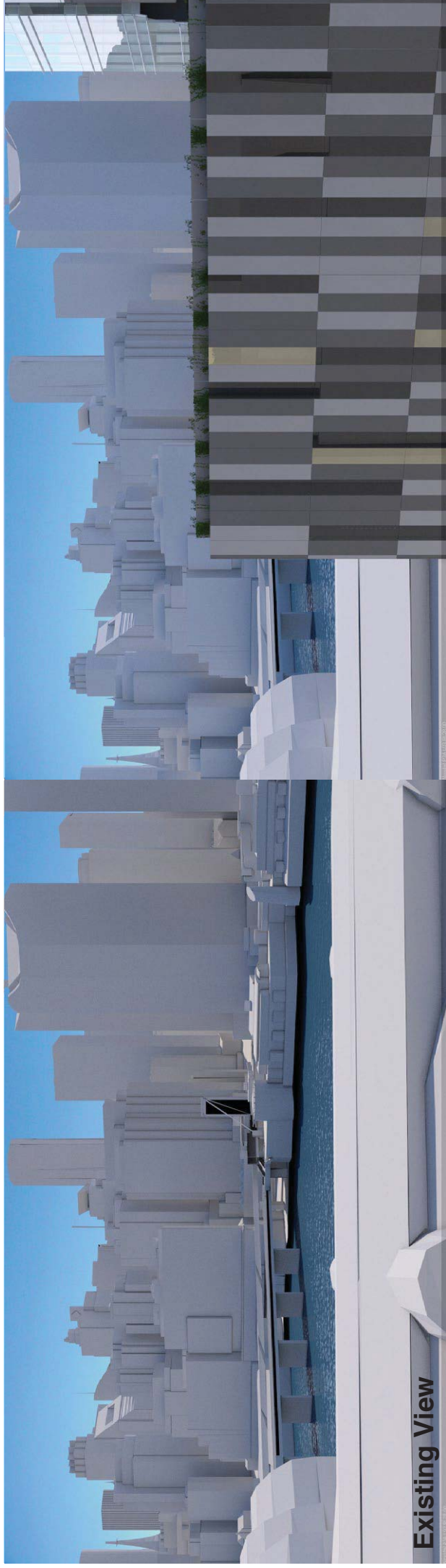
Position: P3A

Level: 03

RL: 28.00 (Camera Height)

FOR INFORMATION ONLY

Illustrative designs of built forms in the Haymarket precinct do not form part of this development application (and will be the subject of separate development assessment processes) and is shown for information and broader illustrative purposes. These images are produced here for view analysis purposes only.



LEGEND:



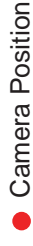
Key Building



Neighbouring Buildings

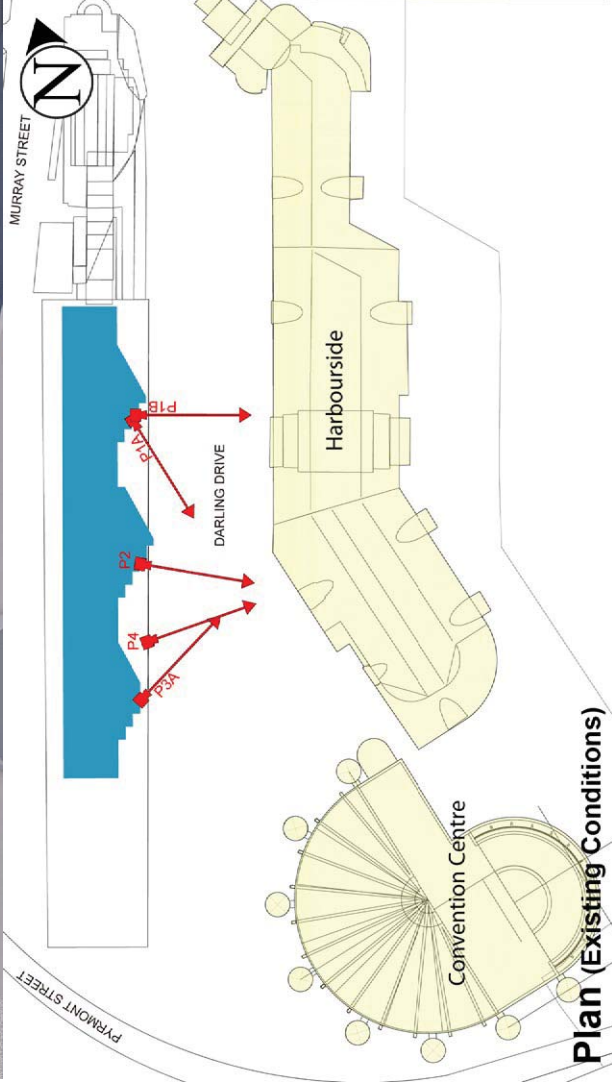


View Direction (50mm Camera)



Camera Position

Existing View



Plan (Existing Conditions)

P3 P4 P3 P2 P1

Lvl 11 ▼ +49,500 FFL
 Lvl 06 ▼ +40,650 FFL
 Lvl 07 ▼ +37,800 FFL
 Lvl 05 ▼ +32,100 FFL
 Lvl 03 ▼ +26,400 FFL
 Lvl 01 ▼ +19,800 FFL

Eastern Elevation (Existing Conditions)

Novotel Sydney Darling Harbour

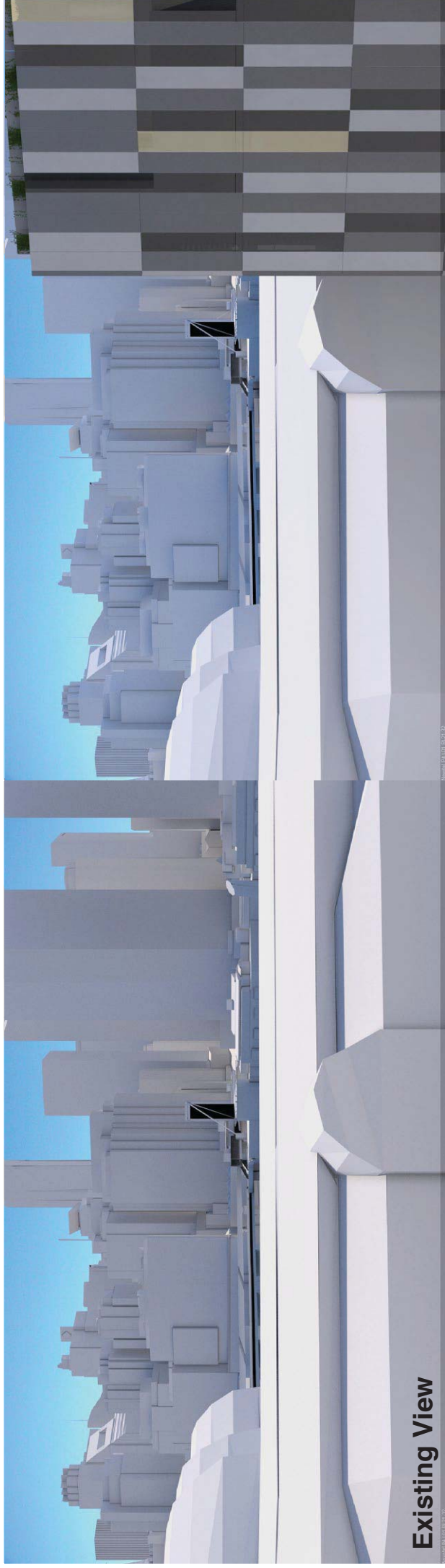
Position: P4

Level: 01 (Balcony)

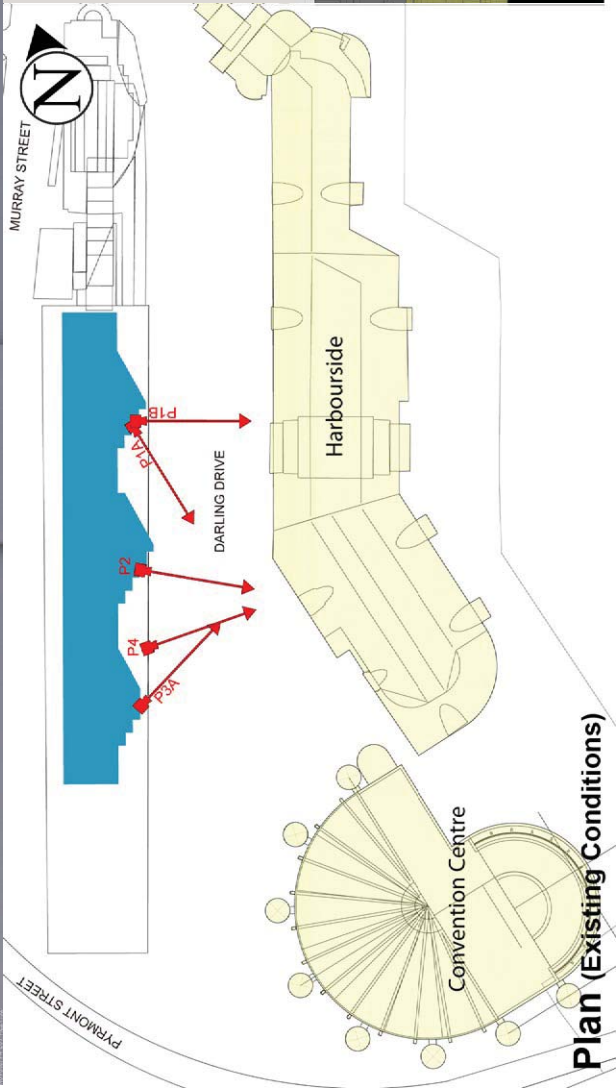
RL: 21.32 (Camera Height)

FOR INFORMATION ONLY

Illustrative designs of built forms in the Haymarket precinct do not form part of this development application (and will be the subject of separate development assessment processes) and is shown for information and broader illustrative purposes. These images are produced here for view analysis purposes only.



Existing View



Plan (Existing Conditions)

LEGEND:



Key Building



Neighbouring Buildings



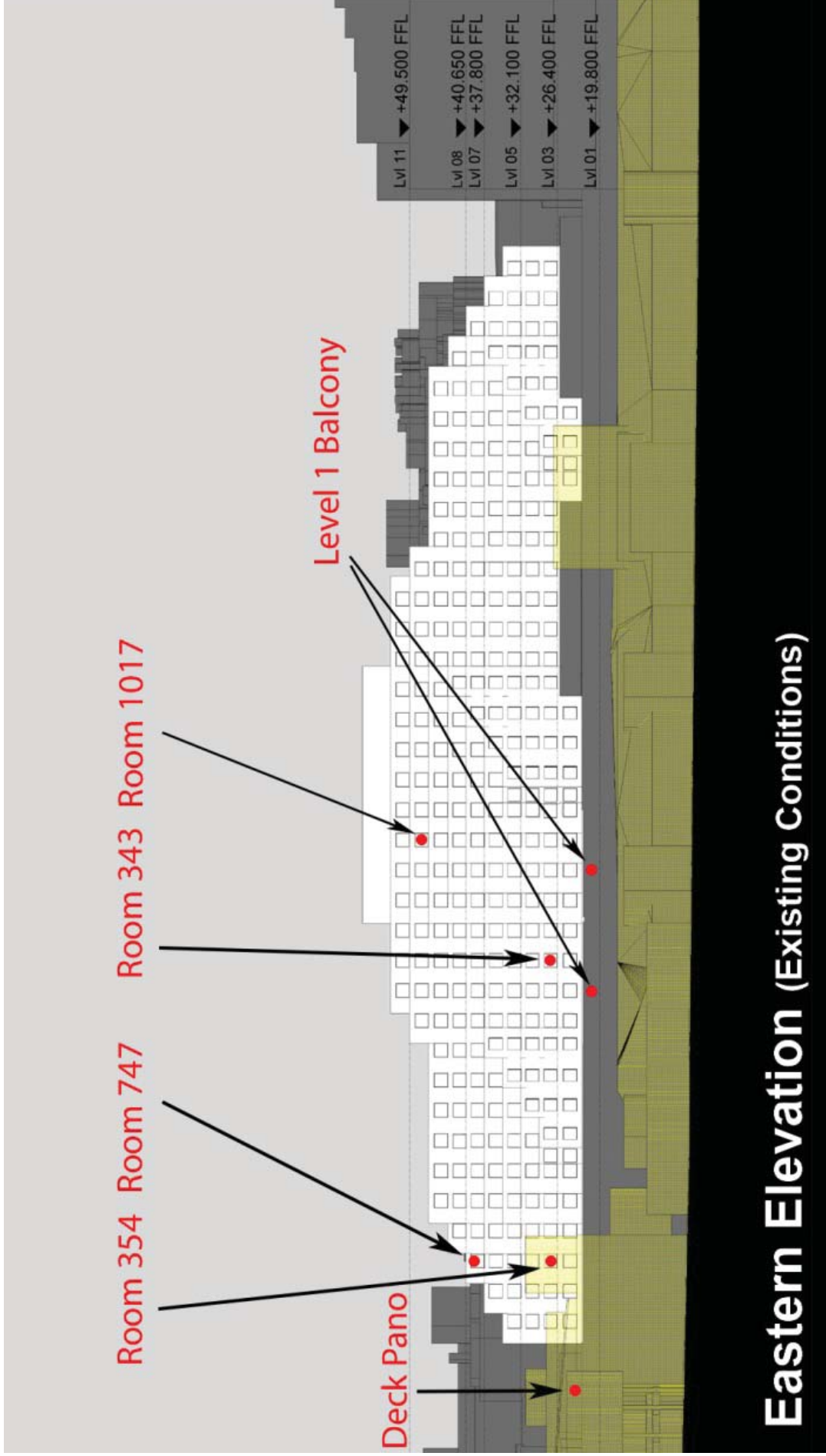
View Direction (50mm Camera)



Camera Position

Lvl 11 ▼ -49,500 FFL
Lvl 06 ▼ -40,650 FFL
Lvl 07 ▼ -37,800 FFL
Lvl 05 ▼ -32,100 FFL
Lvl 03 ▼ -26,400 FFL
Lvl 01 ▼ -19,800 FFL

Eastern Elevation (Existing Conditions)





SICEEP-Novotel Deck 2 EXISTING



SICEEP-Novotel Deck 2



SICEEP-Novotel Deck 1 SE EXISTING



SICEEP-Novotel Deck 1 SE



SICEEP-Novotel Deck 1 E EXISTING



SICEEP-Novotel Deck 1 E



SICEEP-Novotel Apt 343 Position 1EXISTING



SICEEP-Novotel Apt 343 Position 1



SICEEP-Novotel Apt 343 Position 2 EXISTING



SICEEP-Novotel Apt 343 Position 2



SICEEP-Novotel Apt 354 Position 1 EXISTING



SICEEP-Novotel Apt 354 Position 1



SICEEP-Novotel Apt 354 Position 2 EXISTING



SICEEP-Novotel Apt 354 Position 2



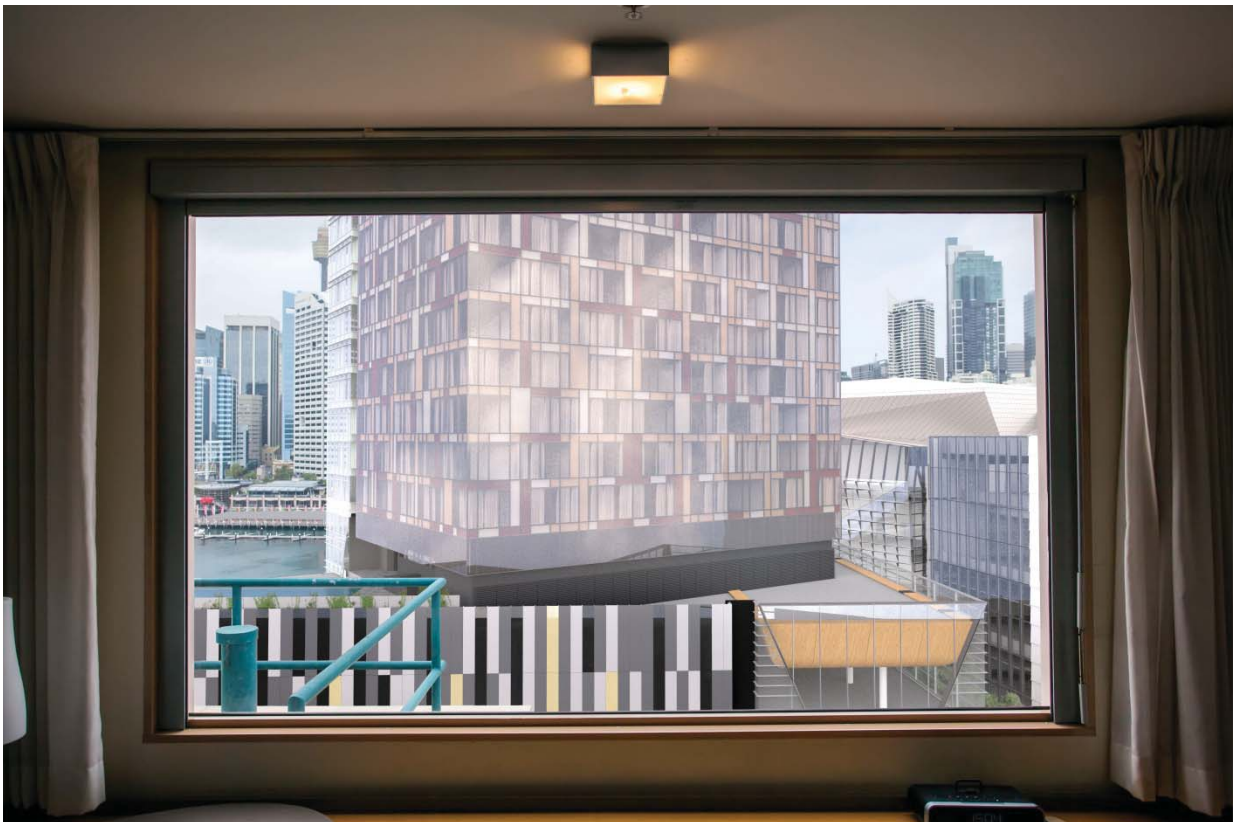
SICEEP-Novotel Apt 354 Position 3 EXISTING



SICEEP-Novotel Apt 354 Position 3



SICEEP-Novotel Apt 747 Position 1 EXISTING



SICEEP-Novotel Apt 747 Position 1



SICEEP-Novotel Apt 747 Position 2 EXISTING



SICEEP-Novotel Apt 747 Position 2



SICEEP-Novotel Apt 747 Position 3 EXISTING



SICEEP-Novotel Apt 747 Position 3



SICEEP-Novotel Apt 1017 EXISTING



SICEEP-Novotel Apt 1017



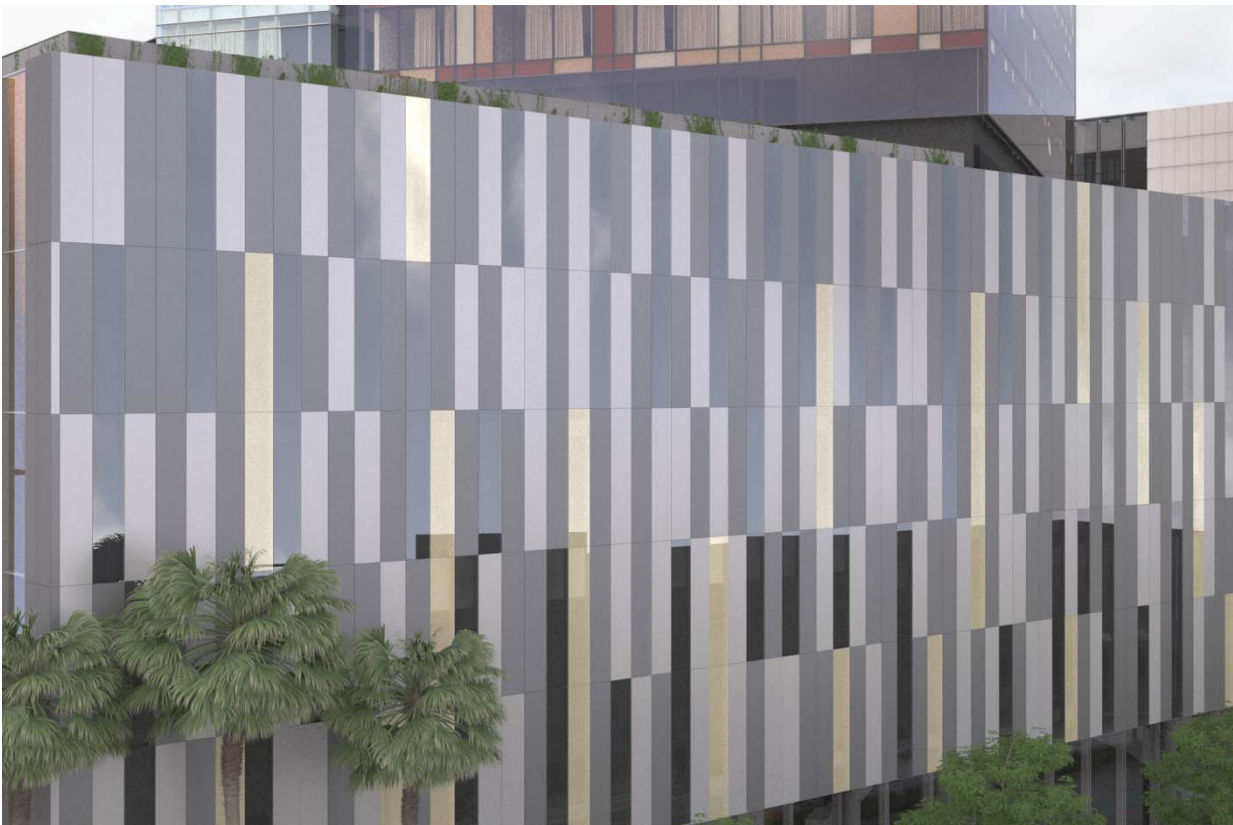
SICEEP – Novotel Panorama EXISTING



SICEEP – Novotel Panorama



SICEEP-Novotel Deck 2 EXISTING



SICEEP-Novotel Deck 2



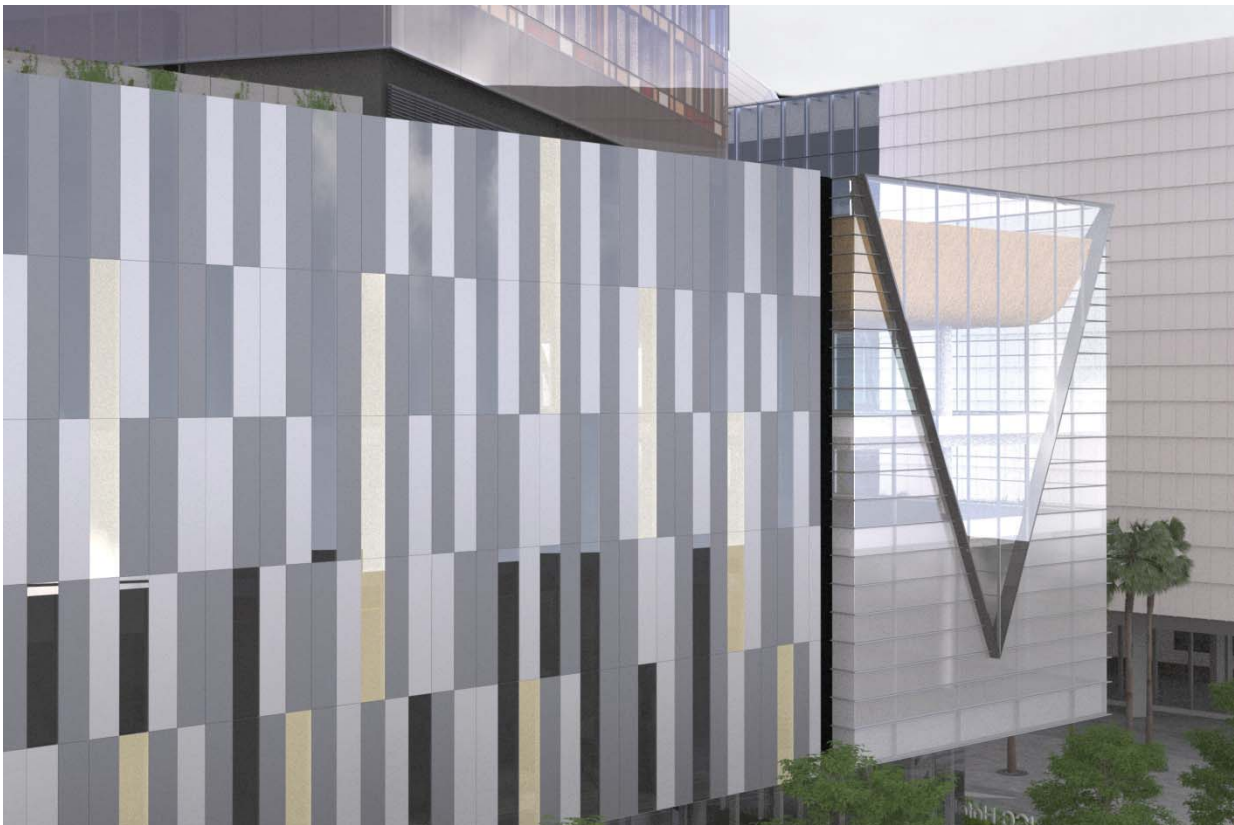
SICEEP-Novotel Deck 1 SE EXISTING



SICEEP-Novotel Deck 1 SE



SICEEP-Novotel Deck 1 E EXISTING



SICEEP-Novotel Deck 1 E