

Notice of Modification

Section 4.55(1A) of the *Environmental Planning and Assessment Act 1979*

As delegate of the Minister for Planning and Public Spaces, I modify the development consent referred to in Schedule 1, as set out in Schedule 2.



Howard Reed
Director Resource Assessments

Sydney

15th July

2019

SCHEDULE 1

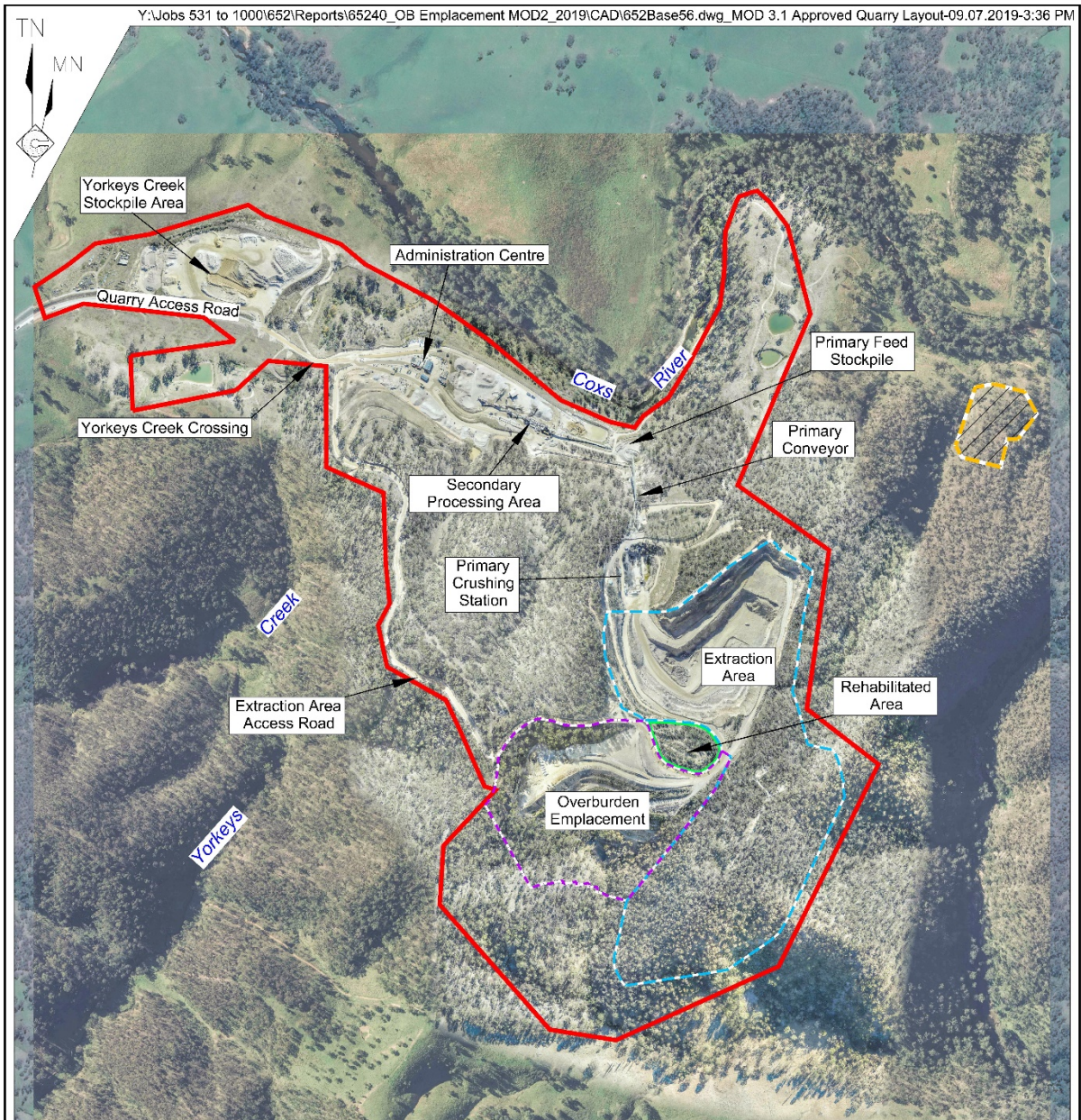
The development consent SSD-6084 for the Austen Quarry Extension Project, granted by the delegate for the Minister for Planning on 15 July 2015.

SCHEDULE 2

1. In the list of Definitions, delete the following terms “Department” and “Minster” and their definitions and insert the following definitions in alphabetical order:

Department	Department of Planning, Industry and Environment
Minister	Minister for Planning and Public Spaces or delegate
SEE (Mod 2)	Statement of Environmental Effects titled <i>Austen Quarry Overburden Emplacement Modification (MOD 2 – SSD 6084) Statement of Environmental Effects</i> , prepared by RW Corkery & Co Pty Limited, dated June 2019; additional information titled <i>Re: Austen Quarry (SSD 6084) Modification 2 – Response to Blue Mountains City Council</i> , prepared by RW Corkery & Co Pty Limited, dated 1 July 2019; and additional information titled <i>Re: Austen Quarry – Request for Information regarding Modification 2 to Development Consent SSD 6084</i> , prepared by RW Corkery & Co Pty Limited, dated 10 July 2019.

2. In the Table of Contents, delete “CONSERVATION AREA H”.
3. In the list of definitions and in Schedule 3, delete “Appendix 6” wherever occurring and replace with “Appendix 2”.
4. In condition 2(a) of Schedule 2, after “(Mod 1)” insert “ and SEE (Mod 2)”.
5. In Appendix 2, delete the figure and replace with:



Note: Some boundaries are coincident

- REFERENCE
- Quarry Site Boundary
 - Extraction Area Boundary
 - Overburden Emplacement Area Boundary
 - Rehabilitated Area (Offset for Clarity)
 - Conservation Area H

SCALE (A4)



Quarry Plan Source: Groundwork Plus - January 2019
 Base Photograph Source: CEH Survey - May 2017 & Google Earth - October 2016 (surrounds)

Figure 2: Development Layout of Austen Quarry and Conservation Area H

6. In Appendix 3, in the section headed 6. Visibility, delete paragraph 6.1(a) and replace with:
 - (a) limit extraction and overburden emplacement to the areas shown in the figures provided in SEE (Mod 2);

7. Delete Appendix 4 and replace with the following:

**APPENDIX 4
CONCEPTUAL FINAL LANDFORM**

Y:\Jobs 531 to 1000\652\Reports\65240_OB Emplacement MOD2_2019\CAD\652Base56.dwg_MOD 3.5 Final Landform-05.07.2019-12:35 PM

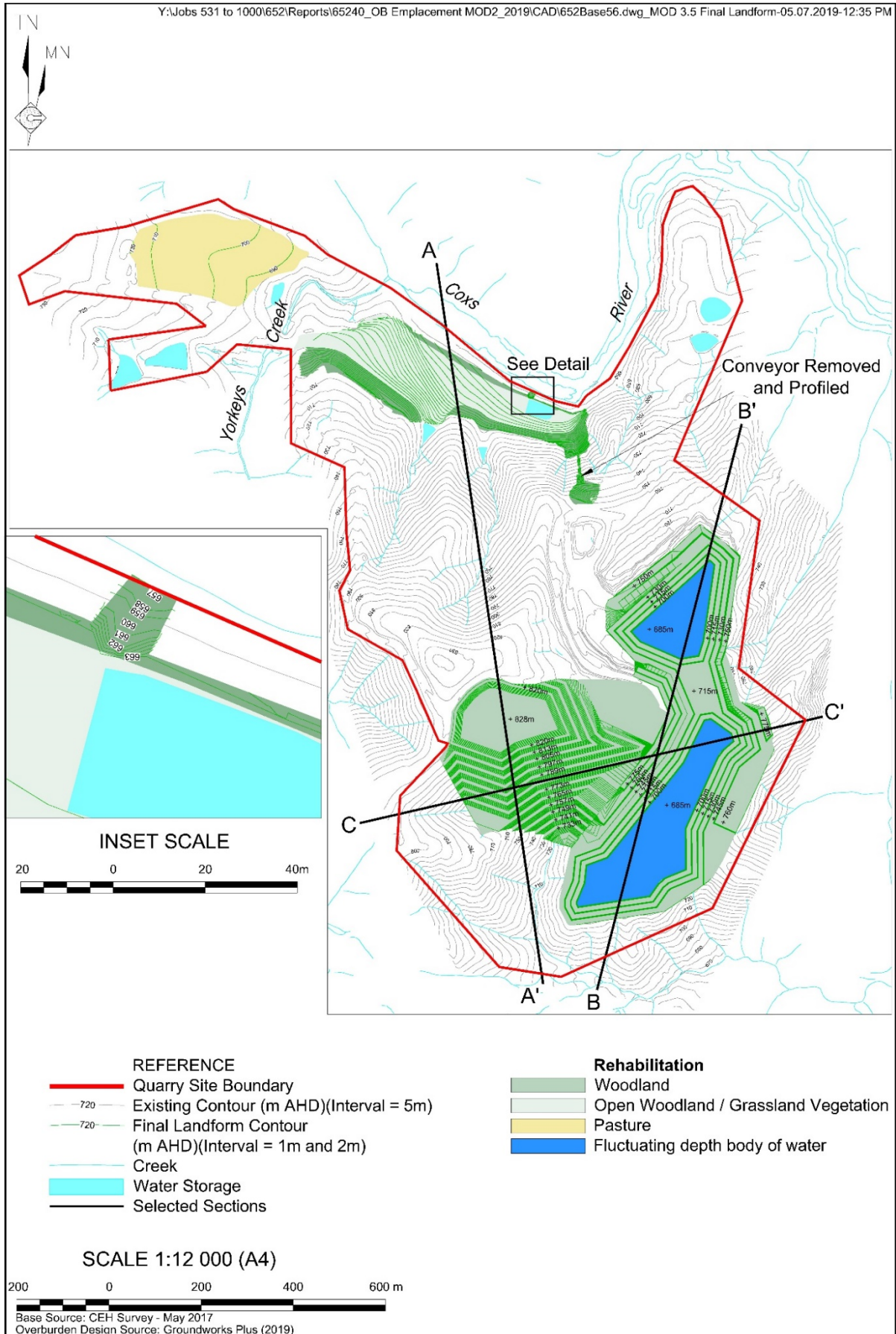


Figure 3: Conceptual Final Landform aerial view

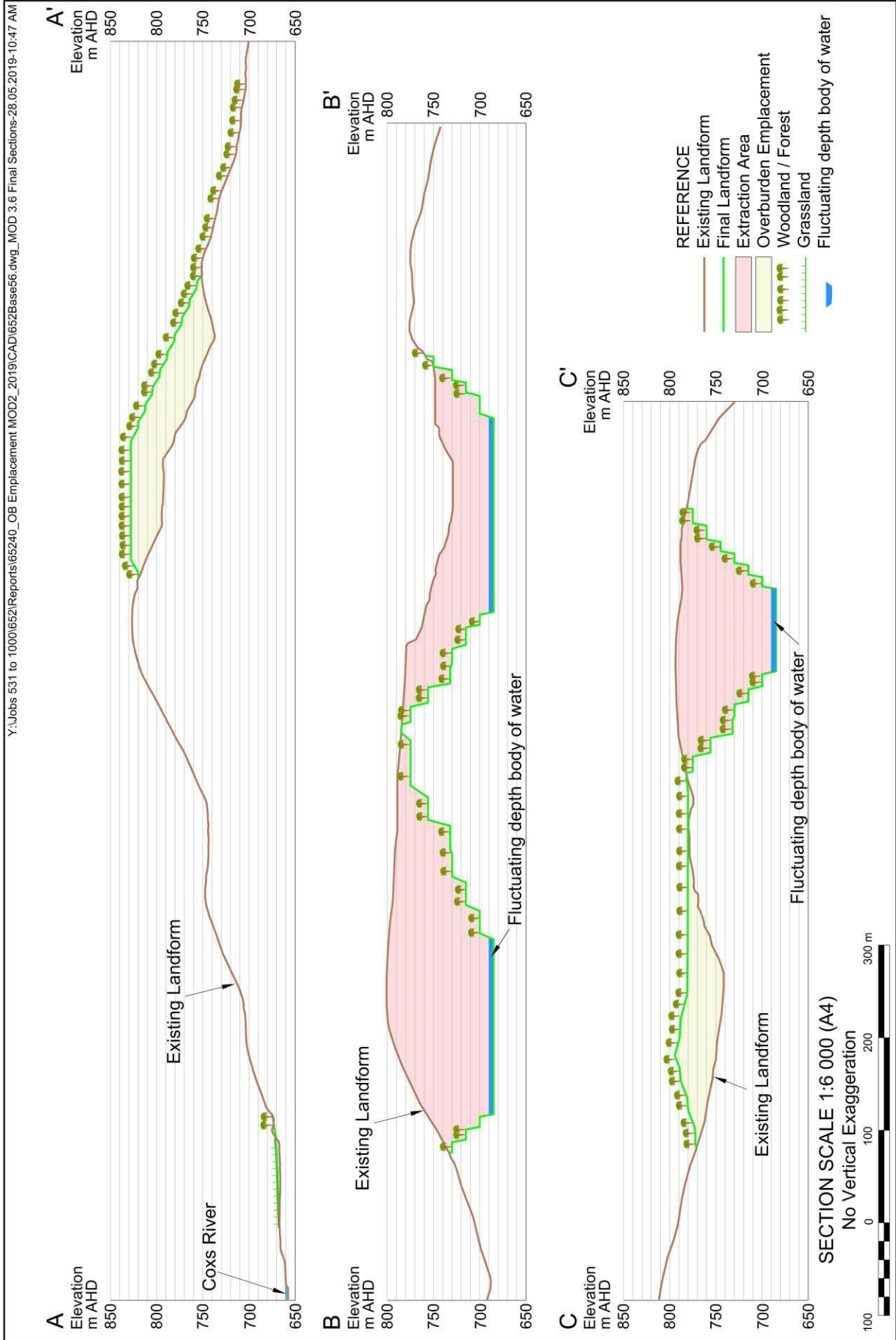


Figure 4: Conceptual Final Landform section view

8. Delete Appendix 6.
9. Update the Table of Contents.