

CENTRAL Area Schedule

TOTAL LAND AREA	612,065 sqm	
Lot	Site Area	Building Area
Lot 1A	41,368 sqm	20,220 sqm
Lot 1B	58,760 sqm	31,745 sqm*
Lot 1C	46,417 sqm	27,145 sqm*
Lot 2A	74,693 sqm	36,570 sqm
Lot 2B	60,010 sqm	31,080 sqm*
Lot 3A	15,997 sqm	7,422 sqm*
Lot 3B	58,493 sqm	36,635 sqm*
Lot 3C	55,622 sqm	32,010 sqm*
Lot 3D	18,795 sqm	8,285 sqm*
SUB TOTAL	430,155 sqm	231,012 sqm*
Lot 4	31,615 sqm	0 sqm*
CENTRAL TOTAL	461,770 sqm	231,012 sqm*
Biodiversity Lot A	18,367 sqm	
Biodiversity Lot B	40,812 sqm	
Biodiversity Lot C	41,533 sqm	
Road Widening Lots	4,595 sqm	

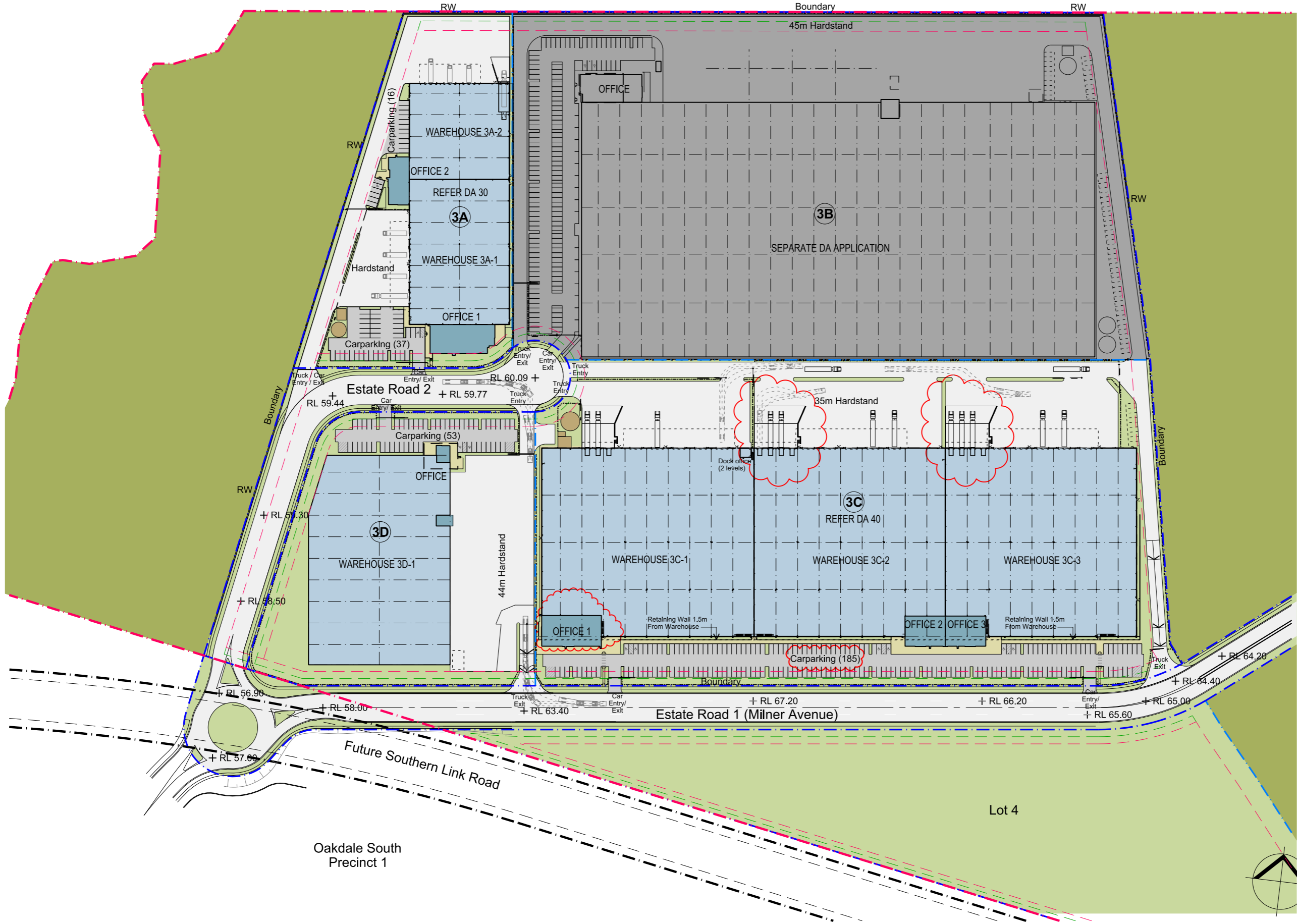
* Areas subject to Survey.



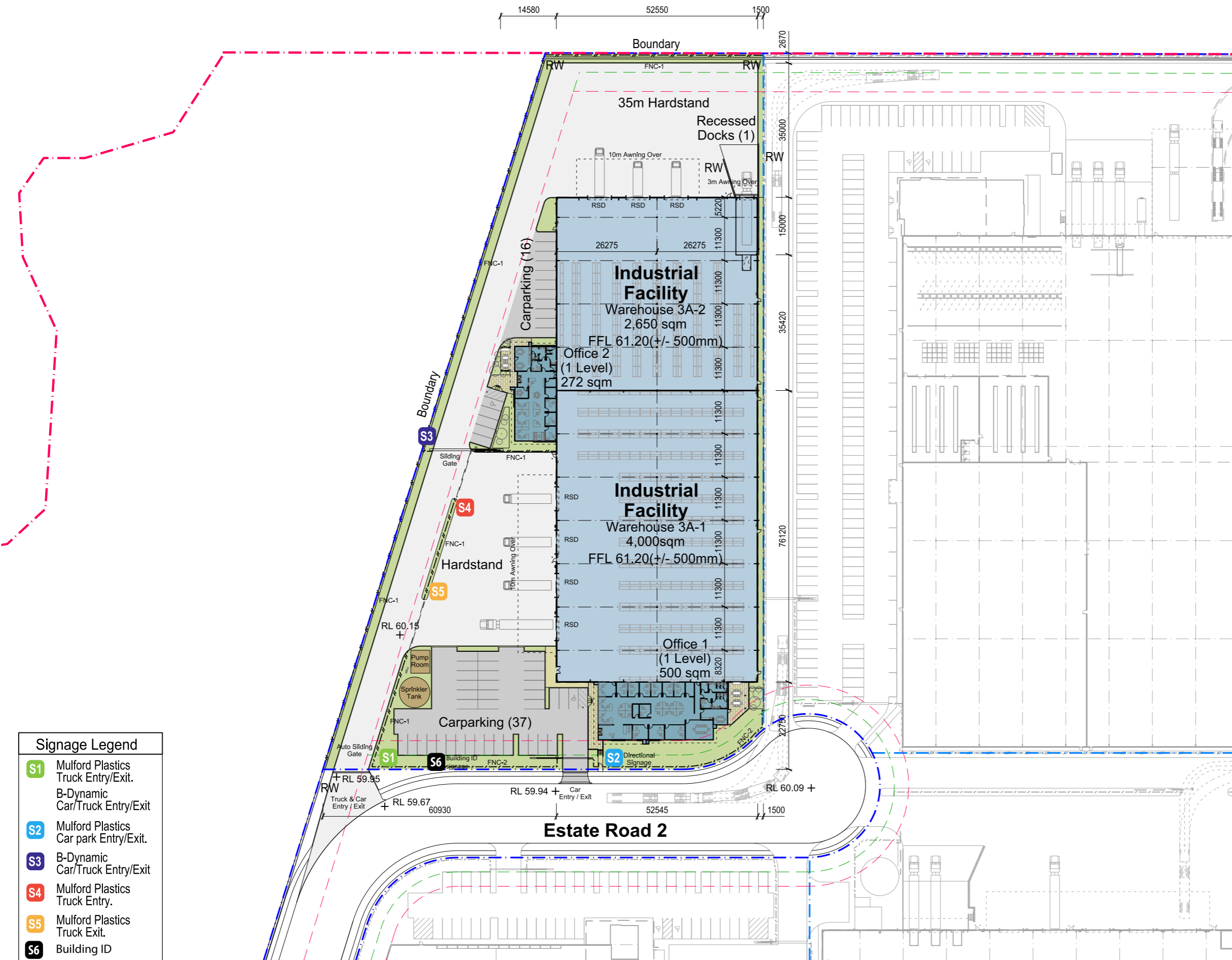
Note: Lot 3 estate signage detail to be included on lot 3 site plans

- S1 Car pak
- S2 Truck entry
- S3 Car park
- S4 Truck entry
- S5 Truck entry
- S6 Truck exit
- S7 Car park
- S8 Truck exit
- S9 Truck exit
- S10 Car park
- S11 Truck entry
- S12 Truck entry
- S13 Car park
- S14 Car park
- S15 Truck exit
- S16 Truck entry
- S17 Car park





Development Area Schedule	
Total Site Area	155,899 sqm
Estate Road 2	6,993 sqm
Total Warehouse	44,865 sqm
Total Office	2,772 sqm
Total Dock Office	80 sqm
Total Building Area	47,717 sqm
Lot 3A	
Site Area	15,997 sqm
Warehouse 1	4,000 sqm
Office 1	500 sqm
Warehouse 2	2,650 sqm
Office 2	272 sqm
Total Building Area	7,422 sqm
Awning	807 sqm
Site Cover (exc. awning)	46 %
Floor Space Ratio	0.46 : 1
Hardstand Area	4,931 sqm
Light Duty Area	1,479 sqm
Carparking	53
Lot 3C	
Site Area	55,622 sqm
Warehouse 1	10,900 sqm
Office 1 - Lower Ground	100 sqm
Office 1 - Ground	500 sqm
Dock Office (top level)	30 sqm
Warehouse 2	9,690 sqm
Office 2	550 sqm
Warehouse 3	9,690 sqm
Office 3	550 sqm
Total Building Area	32,010 sqm
Awning	1,935 sqm
Site Cover (exc. awning)	57 %
Floor Space Ratio	0.57 : 1
Hardstand Area	13,852 sqm
Light Duty Area	4,843 sqm
Carparking	185
Provisional Spaces	9
Lot 3D	
Site Area	18,795 sqm
Warehouse	7,935 sqm
Office	300 sqm
Dock Office (1 level)	50 sqm
Total Building Area	8,285 sqm
Awning	468 sqm
Site Cover (exc. awning)	44 %
Floor Space Ratio	0.44 : 1
Hardstand Area	5,235 sqm
Light Duty Area	1,505 sqm
Carparking	53



LEGEND

- - - Site Boundary
- - - Lot Boundary
- - - Building Setback 7.5m
- - - Landscape Setback 3.75m
- - - FNC-1 Chainwire Fencing
- - - FNC-2 Palisade Fencing
- - - RW Retaining Wall
- RSD Roller Shutter Door

Signage Legend

- S1 Mulford Plastics Truck Entry/Exit. B-Dynamic Car/Truck Entry/Exit
- S2 Mulford Plastics Car park Entry/Exit.
- S3 B-Dynamic Car/Truck Entry/Exit
- S4 Mulford Plastics Truck Entry.
- S5 Mulford Plastics Truck Exit.
- S6 Building ID totem

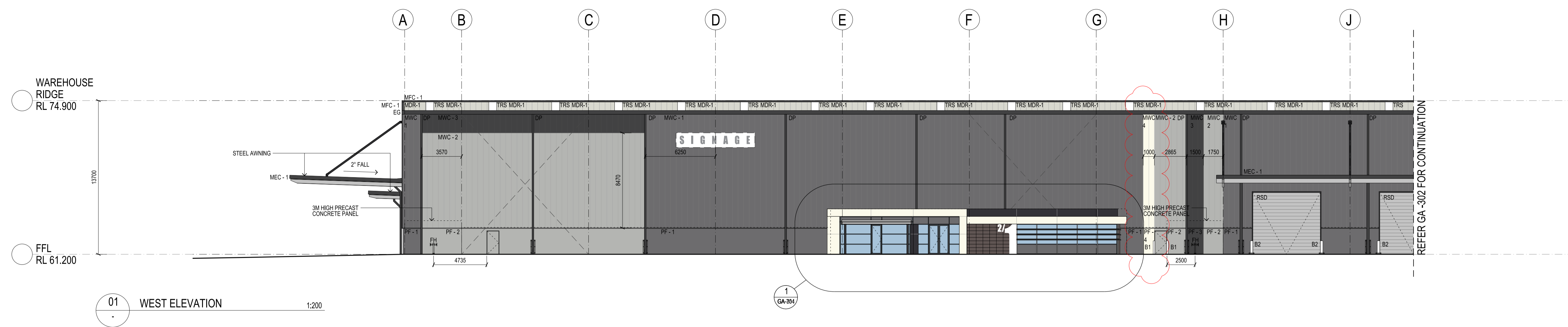
Development Area Schedule

Site Area	15,997 sqm
Warehouse 1	4,000 sqm
Office 1	500 sqm
Warehouse 2	2,650 sqm
Office 2	272 sqm
Total Building Area	7,422 sqm
Awning	807 sqm
Site Cover (exc. awning)	46 %
Floor Space Ratio	0.46 : 1
Hardstand Area	4,931 sqm
Light Duty Area	1,479 sqm
Carparking	53

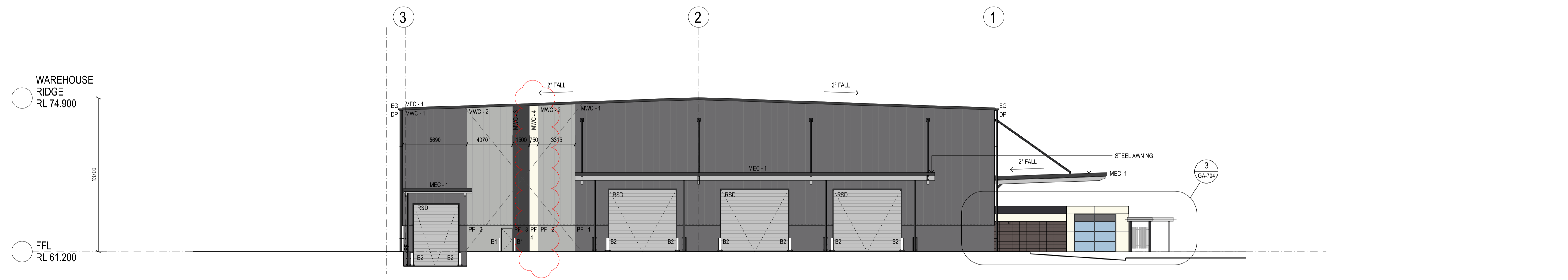
These designs, plans & specifications and the copyright therein are the property of the Architect and must not be used, reproduced or copied wholly or in part without the written permission of this office.

FIGURED DIMENSIONS TO BE USED IN PREFERENCE TO SCALING. ALL DIMENSIONS TO BE CHECKED ON SITE

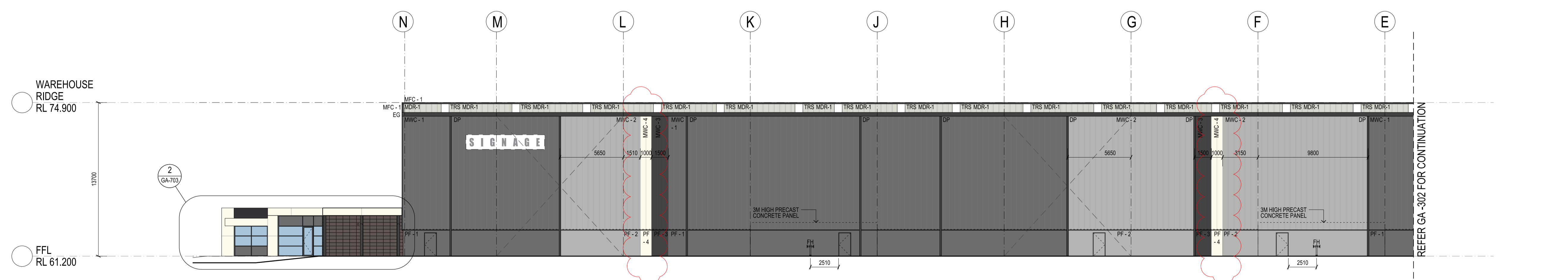
THIS DOCUMENT NOT TO BE USED FOR CONSTRUCTION UNLESS SIGNED & ISSUED FOR CONSTRUCTION



01 WEST ELEVATION 1:200



02 NORTH ELEVATION 1:200



03 EAST ELEVATION 1:200

EXTERNAL FINISHES LEGEND

ALC-1	COMPOSITE ALUMINIUM CLADDING ALUCOBOND 'ANODIZED LOOK C34'
ALC-2	COMPOSITE ALUMINIUM CLADDING ALUCOBOND 'PURE WHITE'
DP	PAINTED DOWNPIPE AND EXTERNAL COLUMN COLOUR TO MATCH COLORBOND MONUMENT
EG	PREFINISHED EAVES GLITTER COLORBOND 'MONUMENT'
GL-1	VISION GLAZING
GL-2	COLOURBACK GLAZING COLOUR TO MATCH COLORBOND 'BASALT'
MFC-1	PREFINISHED FOLDED METAL CAPPING COLORBOND 'MONUMENT'
MEC-1	PREFINISHED FOLDED METAL CAPPING COLORBOND 'MONUMENT'
MDR-1	METAL DECK ROOF SHEETING - KLIP-LOK - ZINCALUME (FOR BOTH OFFICE & WH)
MWC-1	METAL WALL CLADDING TRIMDEK - COLORBOND 'BASALT'
MWC-2	METAL WALL CLADDING TRIMDEK - COLORBOND 'SHALE GREY'
MWC-3	METAL WALL CLADDING TRIMDEK - COLORBOND 'MONUMENT'
MWC-4	METAL WALL CLADDING TRIMDEK - TO MATCH DULUX 'ALPHATEC WHITE'
PC-1	POWDERCOATED ALUMINIUM GLAZING FRAME - DULUX 'ZEUS DARK GREY'
PF-1	PAINTED PRECAST CONCRETE PANEL TO MATCH COLORBOND 'BASALT'
PF-2	PAINTED PRECAST CONCRETE PANEL TO MATCH COLORBOND 'SHALE GREY'
PF-3	PAINTED PRECAST CONCRETE PANEL TO MATCH COLORBOND 'MONUMENT'
PF-4	PAINTED PRECAST CONCRETE PANEL TO MATCH COLORBOND 'SURFMIST'
RSD	GALVANISED PAINT FINISH TO MATCH COLORBOND 'SHALE GREY'
	PAINTED ROLLER SHUTTER FRAME TO MATCH COLORBOND 'MONUMENT'
TFS	TERRACE XP LINEAR COLOUR - TENANT
TRS	TRANSLUCENT ROOF SHEETING

ISSUE	REV.	DESCRIPTION	DATE
C		ISSUED FOR APPROVAL	04.04.2017
B		ISSUED FOR APPROVAL	31.03.2017
A		ISSUED FOR CONSTRUCTION	21.03.2017
P3		ISSUED FOR COORDINATION	13.03.2017
P2		ISSUED FOR COORDINATION	24.11.2016
P1		ISSUED FOR REVIEW	27.10.2016

ARCHITECT

Commercial Industrial Residential Retail Interior Design

Suite 702, 83 Mount Street, North Sydney NSW 2060
 T 02 9929 9988 F 02 9929 8899
 E info@sbaarch.com.au W www.sbaarch.com.au

BUILDER

Partner of choice

CLIENT

PROJECT
**INDUSTRIAL FACILITY
 LOT 3A - OAKDALE CENTRAL
 HORSLEY PARK**

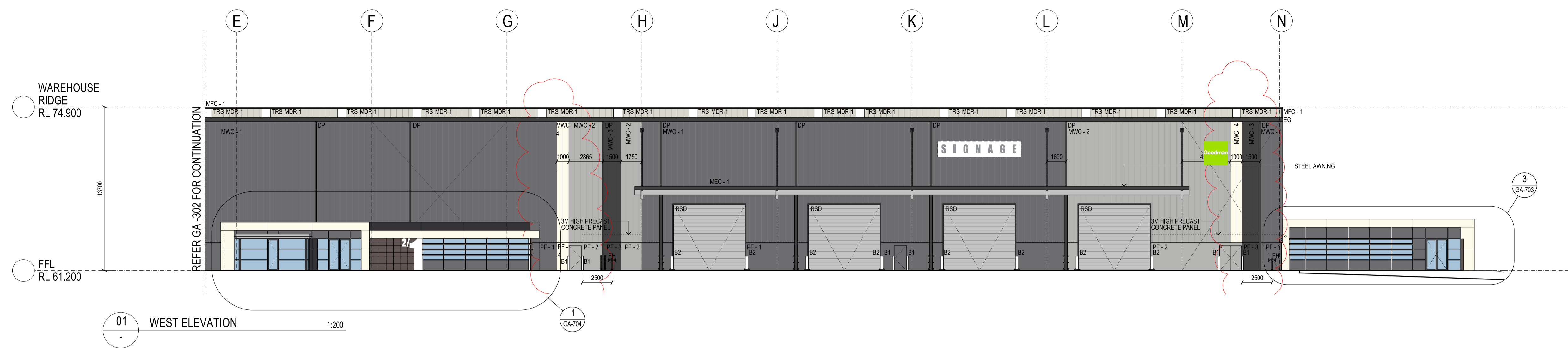
TITLE
**OVERALL COLOURED ELEVATIONS
 SHEET 1 - WEST, NORTH & EAST**

DATE	05.09.16	PROJECT No.	
SCALE	1:200 @ A1		16207
DRAWN	VV / JA		
CHECKED		DWG No.	
APPROVED		ISSUE	GA - 701 C

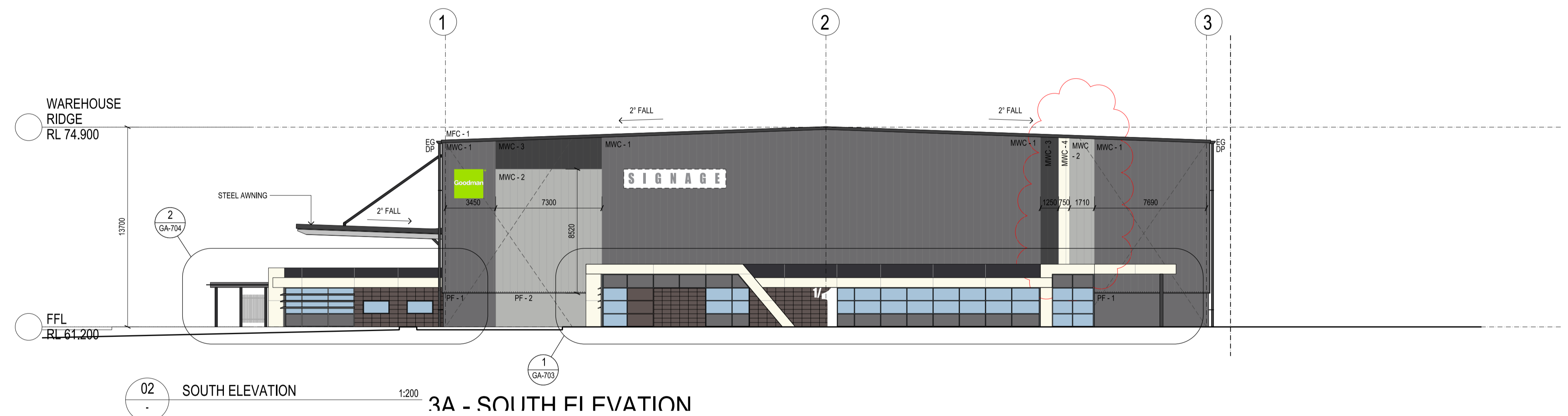
These designs, plans & specifications and the copyright therein are the property of the Architect and must not be used, reproduced or copied wholly or in part without the written permission of this office.

FIGURED DIMENSIONS TO BE USED IN PREFERENCE TO SCALING. ALL DIMENSIONS TO BE CHECKED ON SITE

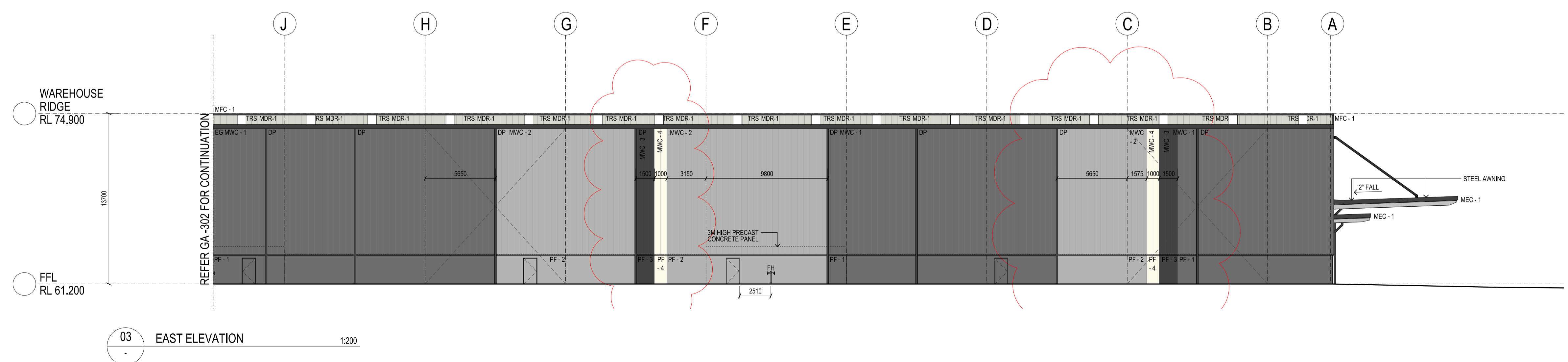
THIS DOCUMENT NOT TO BE USED FOR CONSTRUCTION UNLESS SIGNED & ISSUED FOR CONSTRUCTION



01 WEST ELEVATION 1:200



02 SOUTH ELEVATION 1:200



03 EAST ELEVATION 1:200

EXTERNAL FINISHES LEGEND

- ALC-1 COMPOSITE ALUMINUM CLADDING ALUCOBOND 'ANODIZED LOOK C34'
- ALC-2 COMPOSITE ALUMINUM CLADDING ALUCOBOND 'PURE WHITE'
- DP - PAINTED DOWNPIPE AND EXTERNAL COLUMN COLOUR TO MATCH COLORBOND MONUMENT
- EG - PREFINISHED EAVES GLITTER COLORBOND 'MONUMENT'
- GL-1 VISION GLAZING
- GL-2 COLOURBACK GLAZING COLOUR TO MATCH COLORBOND 'BASALT'
- MFC-1 - PREFINISHED FOLDED METAL CAPPING COLORBOND 'MONUMENT'
- MEC-1 - PREFINISHED FOLDED METAL CAPPING COLORBOND 'MONUMENT'
- MDR-1 METAL DECK ROOF SHEETING - KLIP-LOK - ZINCALUME (FOR BOTH OFFICE & WH)
- MWC-1 METAL WALL CLADDING TRIMDEK - COLORBOND 'BASALT'
- MWC-2 METAL WALL CLADDING TRIMDEK - COLORBOND 'SHALE GREY'
- MWC-3 METAL WALL CLADDING TRIMDEK - COLORBOND 'MONUMENT'
- MWC-4 METAL WALL CLADDING TRIMDEK - TO MATCH DULUX 'ALPHATEC WHITE'
- PC-1 POWDERCOATED ALUMINUM GLAZING FRAME - DULUX ZEUS DARK GREY
- PF-1 PAINTED PRECAST CONCRETE PANEL TO MATCH COLORBOND 'BASALT'
- PF-2 PAINTED PRECAST CONCRETE PANEL TO MATCH COLORBOND 'SHALE GREY'
- PF-3 PAINTED PRECAST CONCRETE PANEL TO MATCH COLORBOND 'MONUMENT'
- PF-4 PAINTED PRECAST CONCRETE PANEL TO MATCH COLORBOND 'SURFMIST'
- RSD GALVANISED PAINT FINISH TO MATCH COLORBOND 'SHALE GREY'
- PAINTED ROLLER SHUTTER FRAME TO MATCH COLORBOND 'MONUMENT'
- TFS - TERRAZADE XP LINEAR COLOUR - TENANT
- TRS - TRANSLUCENT ROOF SHEETING

ISSUE	REV	DESCRIPTION	DATE
B		ISSUED FOR APPROVAL	31.03.2017
A		ISSUED FOR CONSTRUCTION	21.03.2017
P3		ISSUED FOR COORDINATION	13.03.2017
P2		ISSUED FOR COORDINATION	24.11.2016
P1		ISSUED FOR REVIEW	27.10.2016

ARCHITECT

Commercial Industrial Residential Retail Interior Design

Suite 702, 83 Mount Street, North Sydney NSW 2060
 T 02 9929 9988 F 02 9929 8899
 E info@sbaarch.com.au W www.sbaarch.com.au

BUILDER

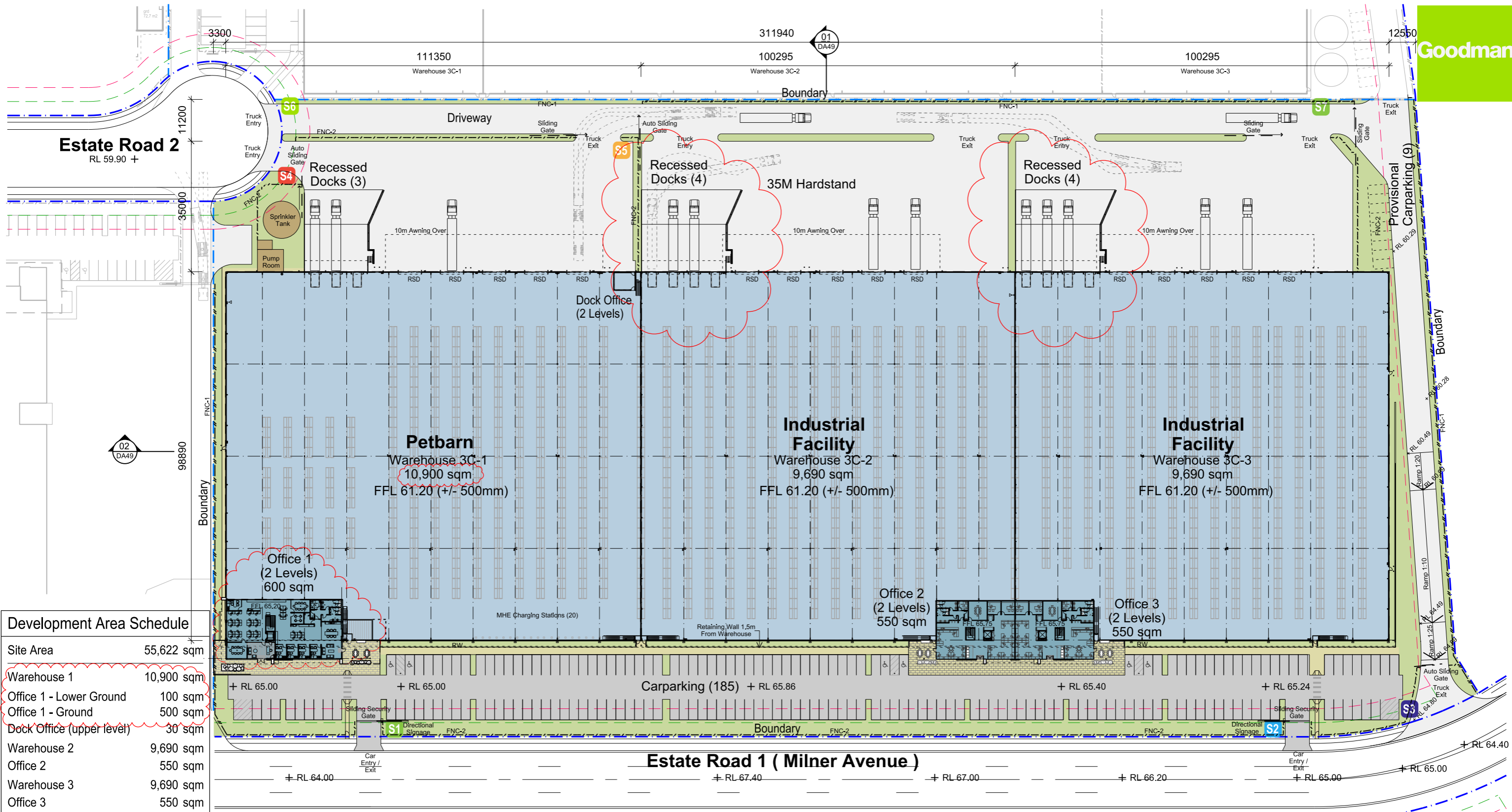
Partner of choice

CLIENT

PROJECT
**INDUSTRIAL FACILITY
 LOT 3A - OAKDALE CENTRAL
 HORSLEY PARK**

TITLE
**OVERALL COLOURED ELEVATIONS
 SHEET 2 - WEST, SOUTH & EAST**

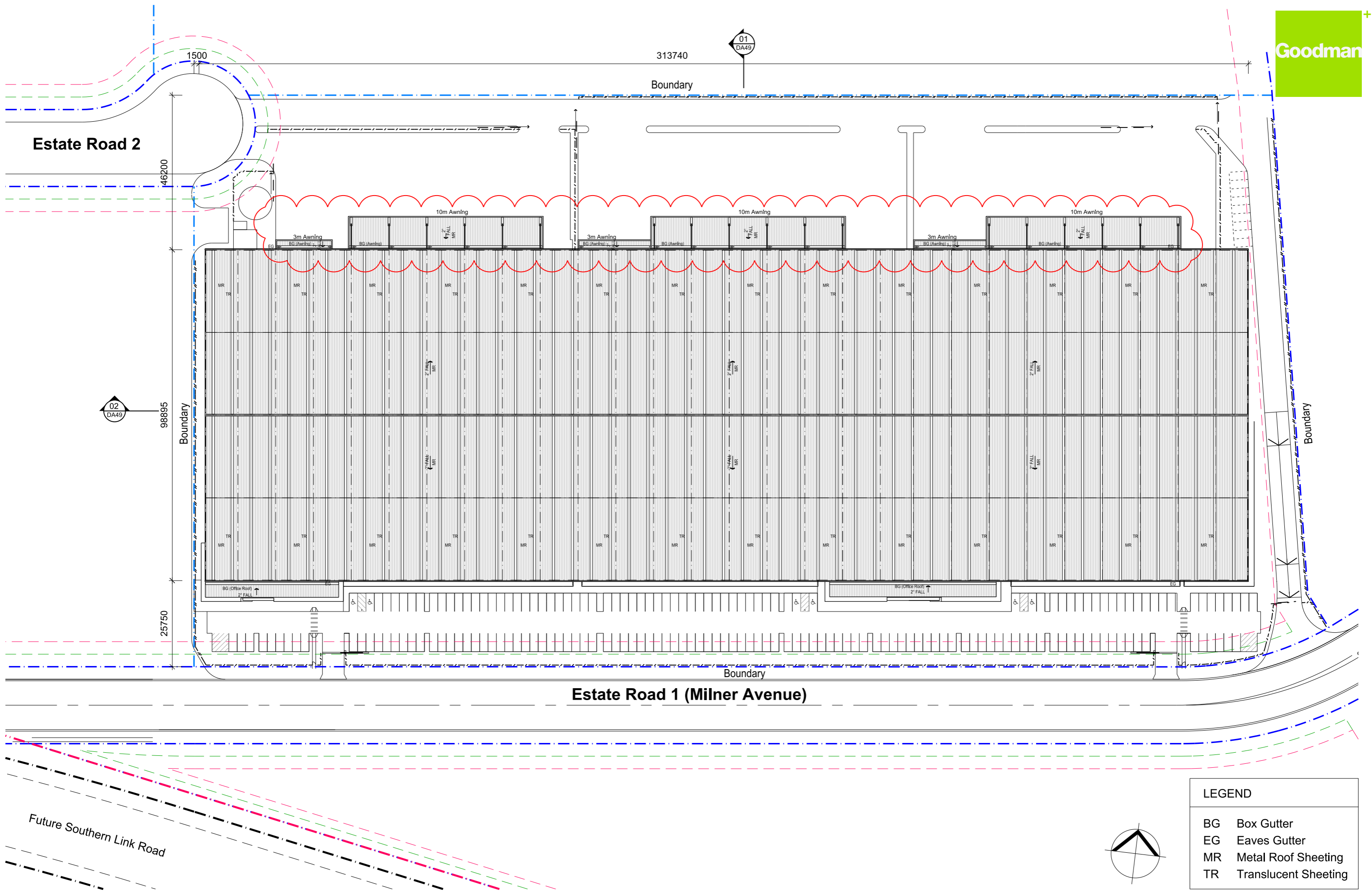
DATE	05.09.16	PROJECT No.	
SCALE	1:200 @ A1		16207
DRAWN	VV/JA		
CHECKED		DWG No.	ISSUE
APPROVED		GA - 702 B	



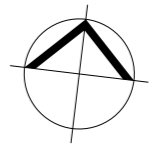
Development Area Schedule	
Site Area	55,622 sqm
Warehouse 1	10,900 sqm
Office 1 - Lower Ground	100 sqm
Office 1 - Ground	500 sqm
Dock Office (upper level)	30 sqm
Warehouse 2	9,690 sqm
Office 2	550 sqm
Warehouse 3	9,690 sqm
Office 3	550 sqm
Total Building Area	32,010 sqm
Awning	1,935 sqm
Site Cover (exc. awning)	57 %
Floor Space Ratio	0.57 : 1
Hardstand Area	13,852 sqm
Light Duty Area	4,843 sqm
Carparking	185
Provisional Spaces	9

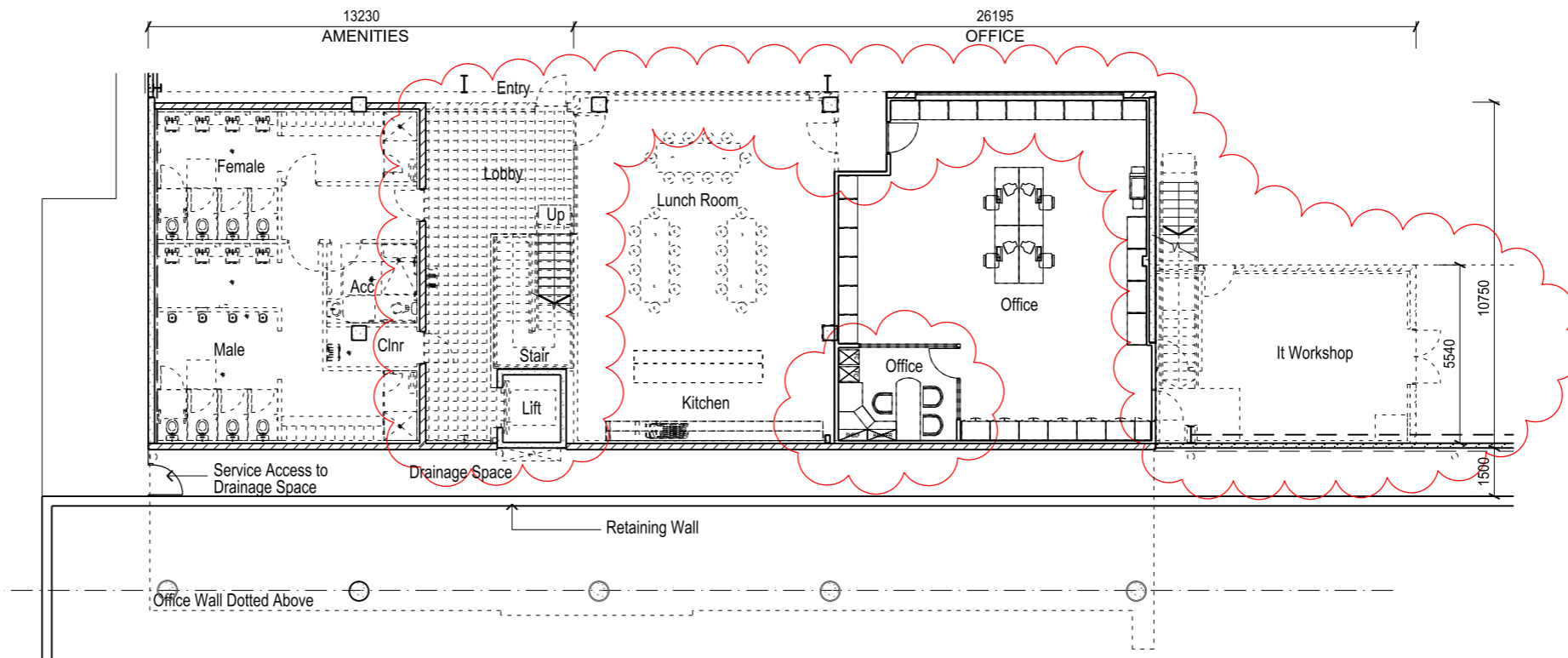
Signage Legend			
S1	Car Entry/Exit.	S5	Petbarn Truck Exit
S2	Car Entry/Exit.	S6	Truck Entry
S3	Truck Exit.	S7	Truck Exit
S4	Petbarn Truck Entry		

LEGEND	
	Site Boundary
	Lot Boundary
	Building Setback 7.5m
	Landscape Setback 3.75m
	Chainwire Fencing
	Palisade Fencing
	Retaining Wall

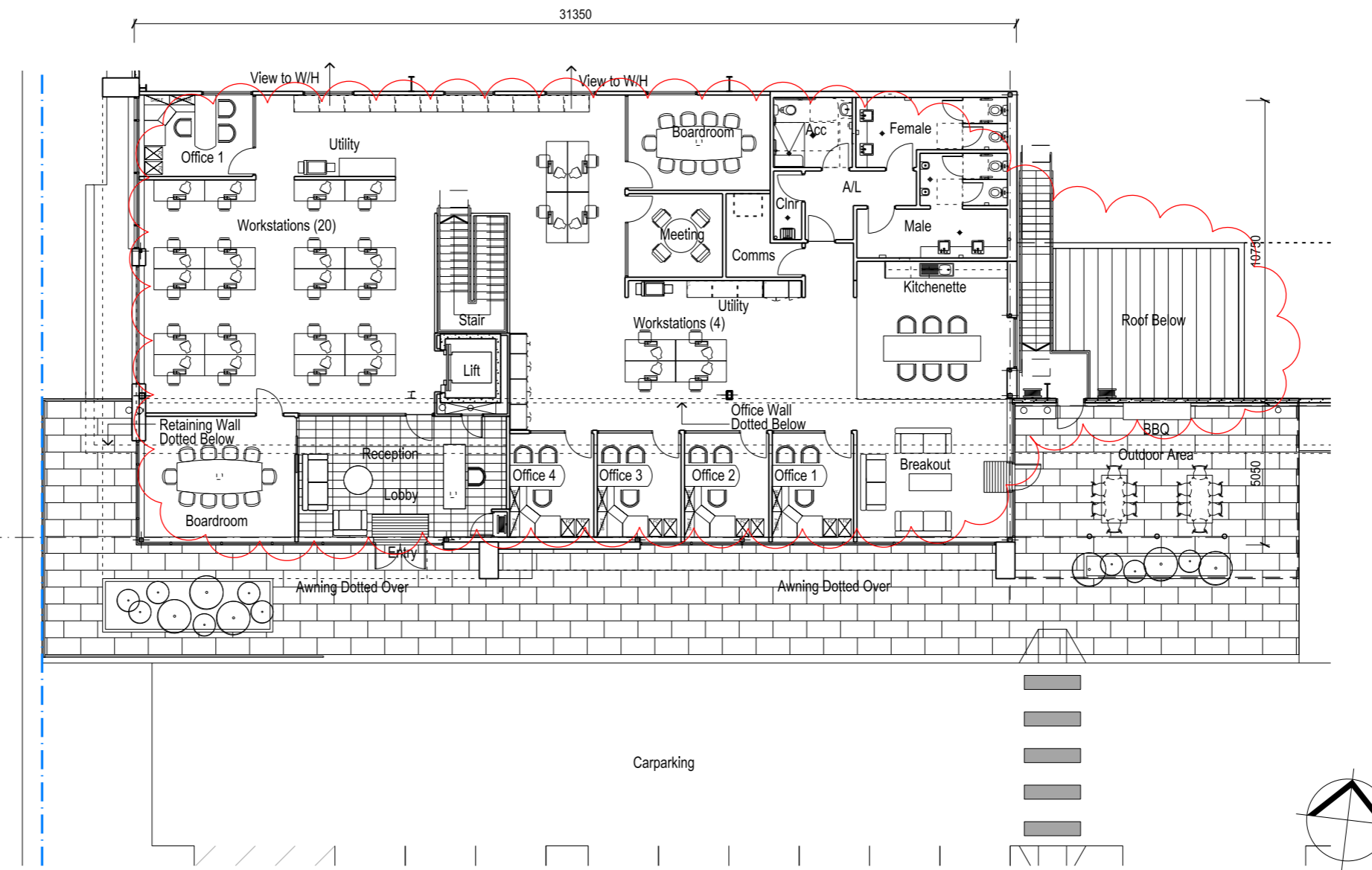


LEGEND	
BG	Box Gutter
EG	Eaves Gutter
MR	Metal Roof Sheet
TR	Translucent Sheet

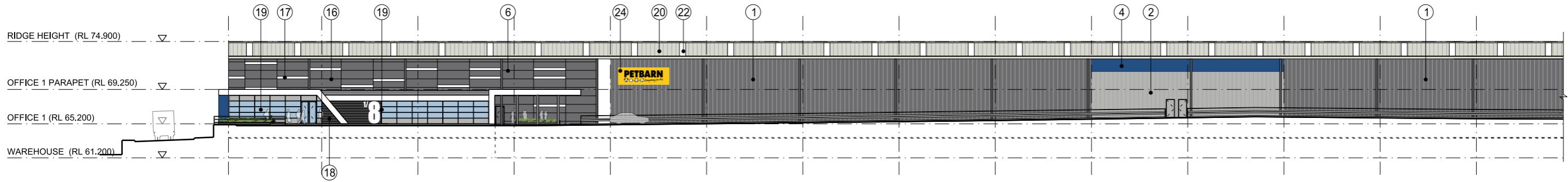




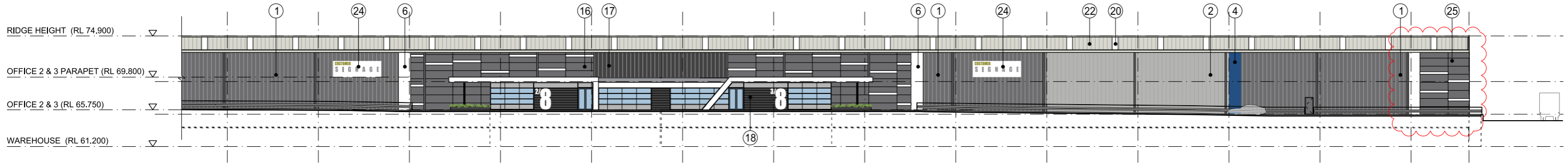
01 FLOOR PLAN
OFFICE LOWER GROUND
AND AMENITIES



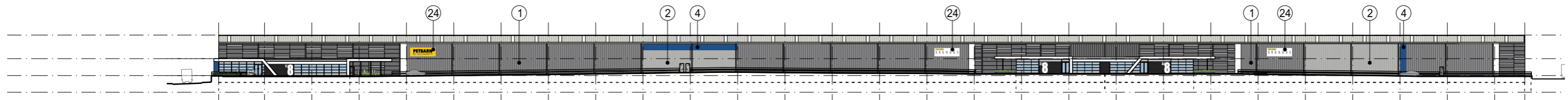
02 FLOOR PLAN
OFFICE GROUND



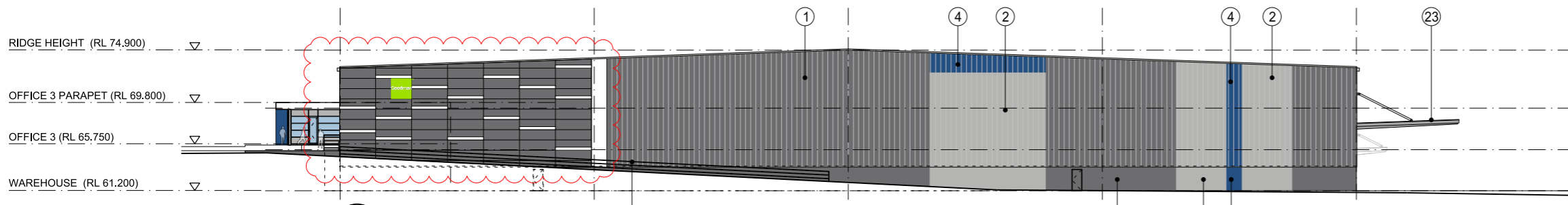
04 SOUTH ELEVATION
PART WAREHOUSE - SCALE 1:500 @ A3



03 SOUTH ELEVATION
PART WAREHOUSE - SCALE 1:500 @ A3

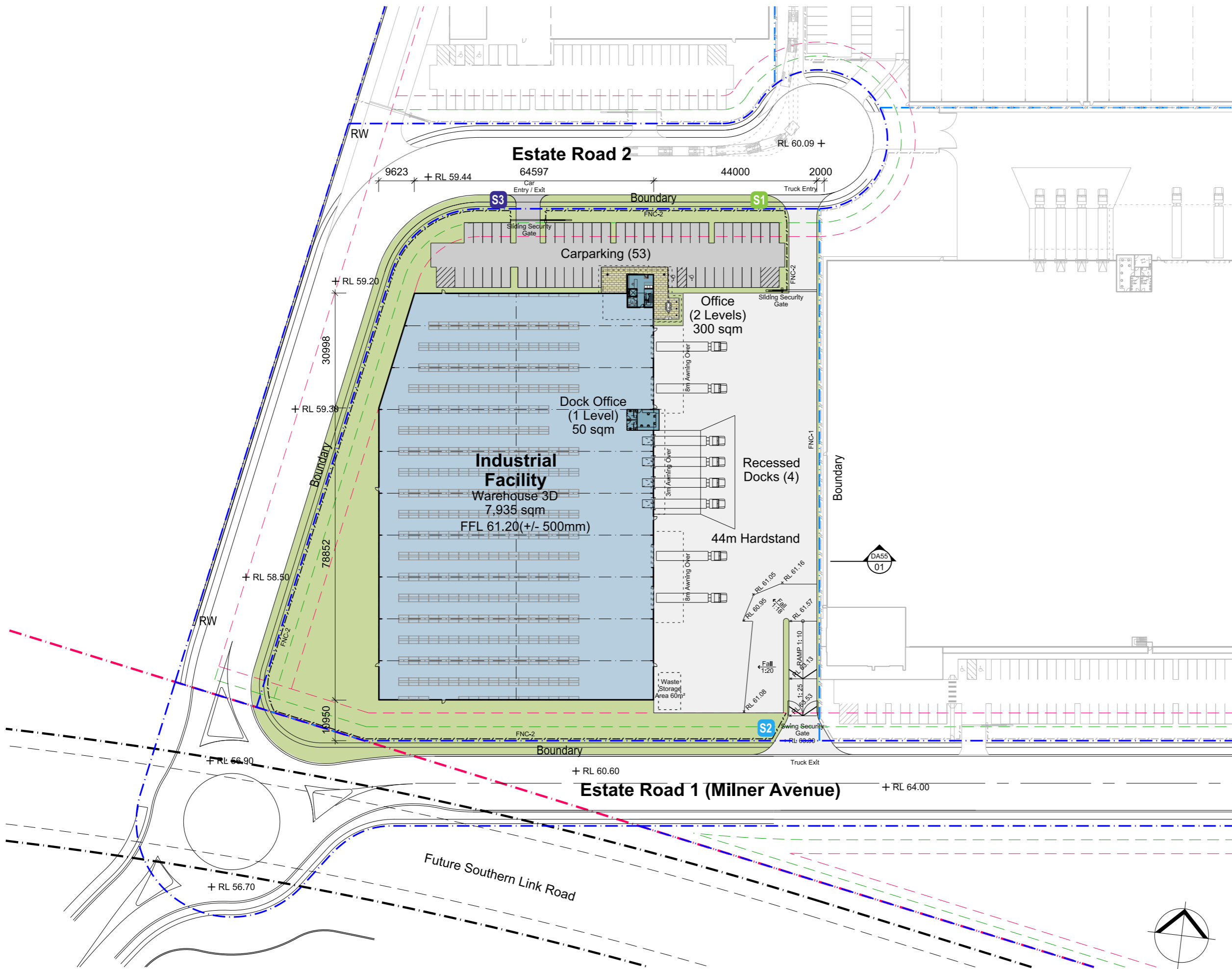


02 SOUTH ELEVATION
OVERALL WAREHOUSE - SCALE 1:1000 @ A3



01 EAST ELEVATION
OVERALL WAREHOUSE - SCALE 1:500 @ A3

Indicative External Finishes Legend			
①	Profiled Metal Wall Cladding Colorbond Basalt	⑦	Precast Concrete Dado Panel Paint Finish 'Basalt'
②	Profiled Metal Wall Cladding Colorbond Shale Grey	⑧	Precast Concrete Dado Panel Paint Finish 'Shale Grey'
③	Profiled Metal Wall Cladding Dulux Alphatec 'Copper'	⑨	Precast Concrete Dado Panel Paint Finish 'Copper'
④	Profiled Metal Wall Cladding Dulux Alphatec 'Pommel Blue'	⑩	Precast Concrete Dado Panel Paint Finish 'Pommel Blue'
⑤	Profiled Metal Wall Cladding Dulux Alphatec 'Monument'	⑪	Precast Concrete Dado Panel Paint Finish 'Monument'
⑥	Profiled Metal Wall Cladding Dulux Alphatec 'White'	⑫	Precast Concrete Dado Panel Paint Finish 'White'
⑬	Aluminium Cladding 'Copper'	⑮	Aluminium Cladding 'Dark Grey'
⑭	Aluminium Cladding 'Pommel Blue'	⑯	Kingspan Colorbond Panel 'Basalt'
⑰	Aluminium Cladding 'White'	⑲	Kingspan Colorbond Highlight Panel 'Off White'
⑱	Aluminum Window Frames - Dark Grey (or sim.)	⑳	Terracade Facade System 'TN Smooth Simpson'
㉑	Profiled Metal Roofing - Light Grey	㉒	Aluminium Cladding 'Grey'
㉒	Metal Roller Shutter Door - 'Galv. Finish'	㉓	Goodman Sign
㉓	Tranlucent Skylight Panel	㉔	Colour Back Glass -
㉔	Steel Framed Awning - 'Galv. Finish'	㉕	Aluminium Cladding 'White'
㉕	Tenant Signage	㉖	Aluminium Cladding 'Grey'



LEGEND

- Site Boundary
- Lot Boundary
- Building Setback 7.5m
- Landscape Setback 3.75m
- FNC-1 Chainwire Fencing
- FNC-2 Palisade Fencing
- RW Retaining Wall

Signage Legend

- S1 Truck Entry.
- S2 Truck Exit.
- S3 Car Park Entry / Exit

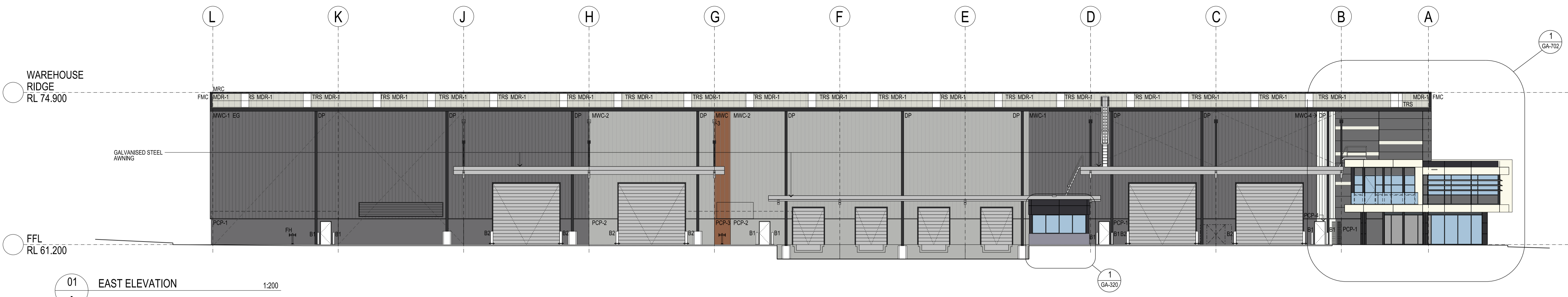
Development Area Schedule

Site Area	18,795 sqm
Warehouse	7,935 sqm
Office	300 sqm
Dock Office (1 level)	50 sqm
Total Building Area	8,285 sqm
Awning	468 sqm
Site Cover (exc. awning)	44 %
Floor Space Ratio	0.44 : 1
Hardstand Area	5,235 sqm
Light Duty Area	1,505 sqm
Carparking	53

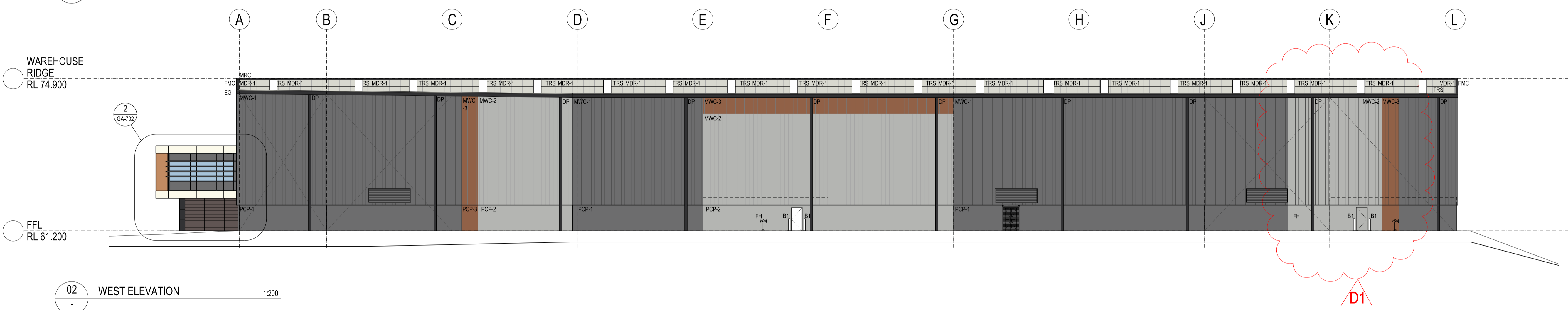
These designs, plans & specifications and the copyright therein are the property of the Architect and must not be used, reproduced or copied wholly or in part without the written permission of this office.

FIGURED DIMENSIONS TO BE USED IN PREFERENCE TO SCALING. ALL DIMENSIONS TO BE CHECKED ON SITE

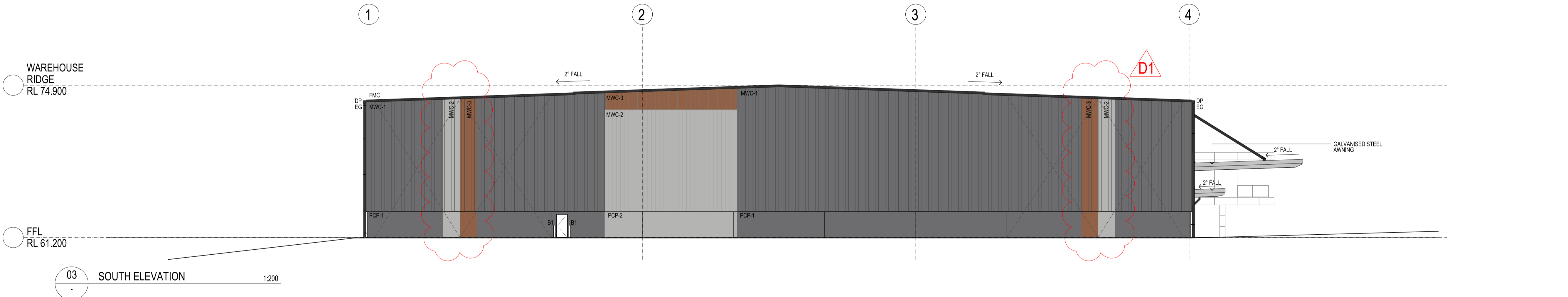
THIS DOCUMENT NOT TO BE USED FOR CONSTRUCTION UNLESS SIGNED & ISSUED FOR CONSTRUCTION



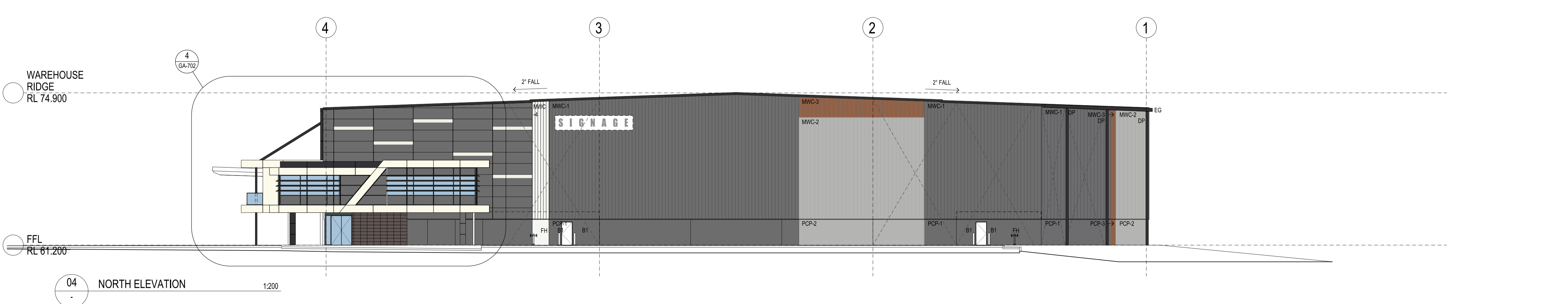
01 EAST ELEVATION 1:200



02 WEST ELEVATION 1:200



03 SOUTH ELEVATION 1:200



04 NORTH ELEVATION 1:200

EXTERNAL FINISHES LEGEND

- AL-1 POWDERCOATED ALUMINIUM GLAZING FRAME - DULUX ZEUS DARK GREY
- ALC-1 COMPOSITE ALUMINIUM CLADDING ALUCOBOND PURE WHITE
- ALC-2 COMPOSITE ALUMINIUM CLADDING ALUCOBOND ANOXISED LOOK C34
- ALC-3 COMPOSITE ALUMINIUM CLADDING - ALUCOBOND INDIANA COPPER
- DP - PAINTED DOWNPIPE COLOUR TO MATCH COLORBOND MONUMENT
- EG - PREFINISHED EAVES GUTTER COLORBOND MONUMENT
- FMC - PREFINISHED FOLDED METAL CAPPING COLORBOND MONUMENT
- GL-1 VISION GLAZING
- GL-2 COLOURBACK GLAZING COLOUR TO MATCH COLORBOND BASALT
- MDR-1 METAL DECK ROOF SHEETING - KLIP-LOK - ZINCALUME
- MWC-1 METAL WALL CLADDING TRIMDEK - COLORBOND BASALT
- MWC-2 METAL WALL CLADDING TRIMDEK - COLORBOND SHALE GREY
- MWC-3 METAL WALL CLADDING TRIMDEK - DULUX ALPHATEC COPPER PEARL
- MWC-4 METAL WALL CLADDING TRIMDEK - DULUX DURATEC ZEUS WHITE
- MWP-1 PREFINISHED INSULATED METAL FACED WALL PANEL - KINGSPAN BENCHMARK EVOLUTION AXIS COLOUR BASALT
- MWP-PF PAINT FINISH TO PREFINISHED INSULATED METAL FACED WALL PANEL COLOUR - OFF WHITE
- PCP-1 PAINTED PRECAST CONCRETE PANEL TO MATCH COLORBOND BASALT
- PCP-2 PAINTED PRECAST CONCRETE PANEL TO MATCH COLORBOND SHALE GREY
- PCP-3 PAINTED PRECAST CONCRETE PANEL TO MATCH DULUX ALPHATEC COPPER PEARL
- PCP-4 PRECAST CONCRETE PANEL
- RSJ GALVANISED PAINTED STEEL ROLLER SHUTTER TO MATCH COLORBOND SHALE GREY
- PAINTED ROLLER SHUTTER FRAME TO MATCH COLORBOND MONUMENT
- TER - TERRACE X-P LINEAR COLOUR - TENANT
- TRS - TRANSLUCENT ROOF SHEETING

ISSUE	REV.	DESCRIPTION	DATE
D	1	ISSUED FOR APPROVAL	04.04.2017
C	1	Finals colour handling added	26.10.2016
B	1	Finals updated	15.08.2016
A	1	Finals updated	10.08.2016

SBA ARCHITECTS
 Commercial Industrial Residential Retail Interior Design
 Suite 702, 83 Mount Street, North Sydney NSW 2060
 T 02 9529 9988 F 02 9529 8899
 E info@sbsarch.com.au W www.sbsarch.com.au

BUILDER
 Design & Construction by
PRIME CONSTRUCTIONS

CLIENT

PROJECT
 DSV
 LOT 3D - OAKDALE CENTRAL
 HORSLEY PARK

TITLE
OVERALL ELEVATIONS - COLOURED

DATE	04.04.17	PROJECT No.	
SCALE	1:200 @ A1		16172
DRAWN	JA		
CHECKED		DWG No.	
APPROVED			GA-701 D