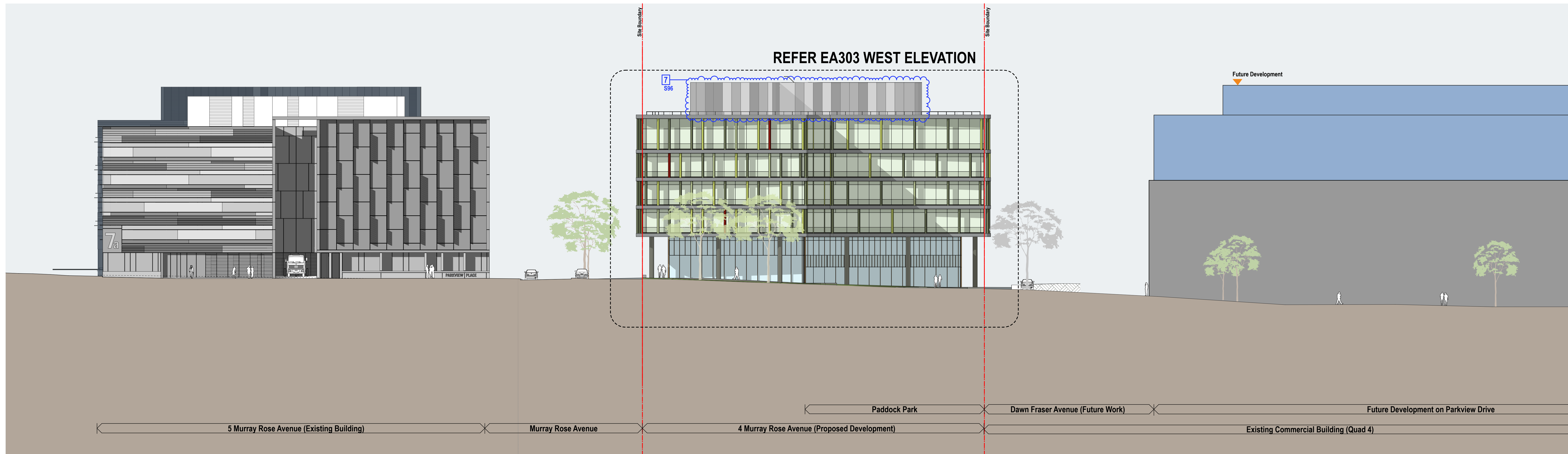


1 East Elevation, Shared Pedestrian/Driveway Access
1:200



2 West Elevation, Future Parkview Drive
1:200

LEGEND

- FUTURE DEVELOPMENTS, NOT PART OF THIS APPLICATION
- EXISTING BUILDINGS

NOTES
 1. THIS DRAWING IS THE PROPERTY OF TURNER & PARTNERS ARCHITECTS AND ENGINEERS. ANY REUSE OR REPRODUCTION OF THIS DRAWING WITHOUT THE WRITTEN PERMISSION OF TURNER & PARTNERS ARCHITECTS AND ENGINEERS IS STRICTLY PROHIBITED. ANY REUSE OR REPRODUCTION OF THIS DRAWING WITHOUT THE WRITTEN PERMISSION OF TURNER & PARTNERS ARCHITECTS AND ENGINEERS IS STRICTLY PROHIBITED.

CLIENT
 THE GPT GROUP
 Level 51 MLC Centre 19 Martin Pl Sydney
 NSW 2000 AU



PROJECT MANAGER
 LEND LEASE
 The Bond, 30 Hickson Road, Millers Point,
 NSW 2000 AU



© 2022 Turner & Partners Architects and Engineers
 Turners & Partners Architects and Engineers
 10/110 South Street, Sydney NSW 2000

Project Title	4MR	4 Murray Rose Avenue SOP NSW 2127 AU	Scale	1:200 @A3, 35% @A3	Client	GPT	Project No.	12022	Drawn by	North
Drawing Title	GENERAL	Context Elevations East and West	Author	SSD SUBMISSION - S96	Check No.	EA006	Rev	F	Rev	F

