

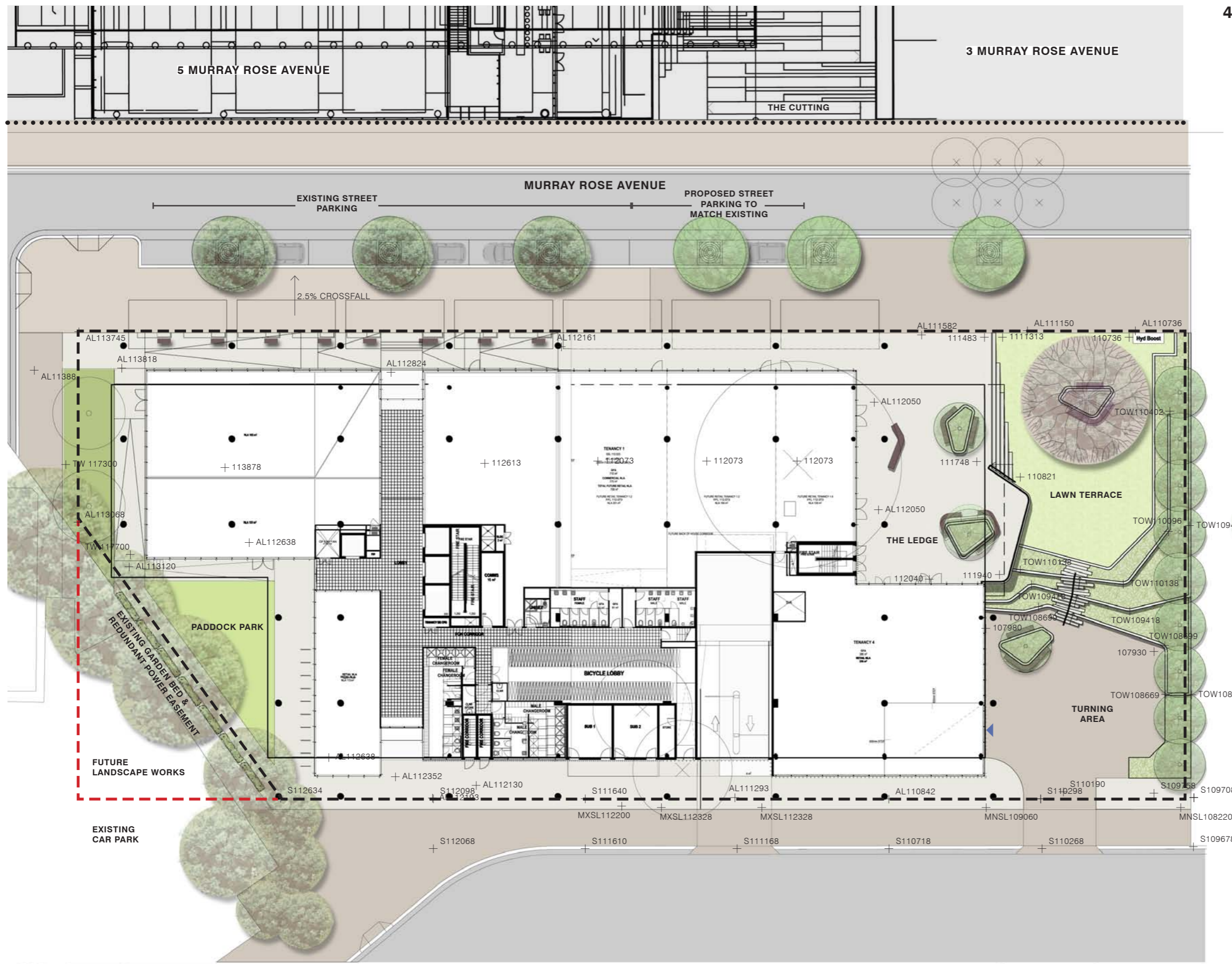


Sydney Olympic Park
4 Murray Rose Avenue

LANDSCAPE CONCEPT DESIGN

CLIENT: GPT Group
PROJECT MANAGER: Lend Lease
ARCHITECT: Turner

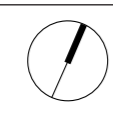
4 Murray Rose Landscape Plan



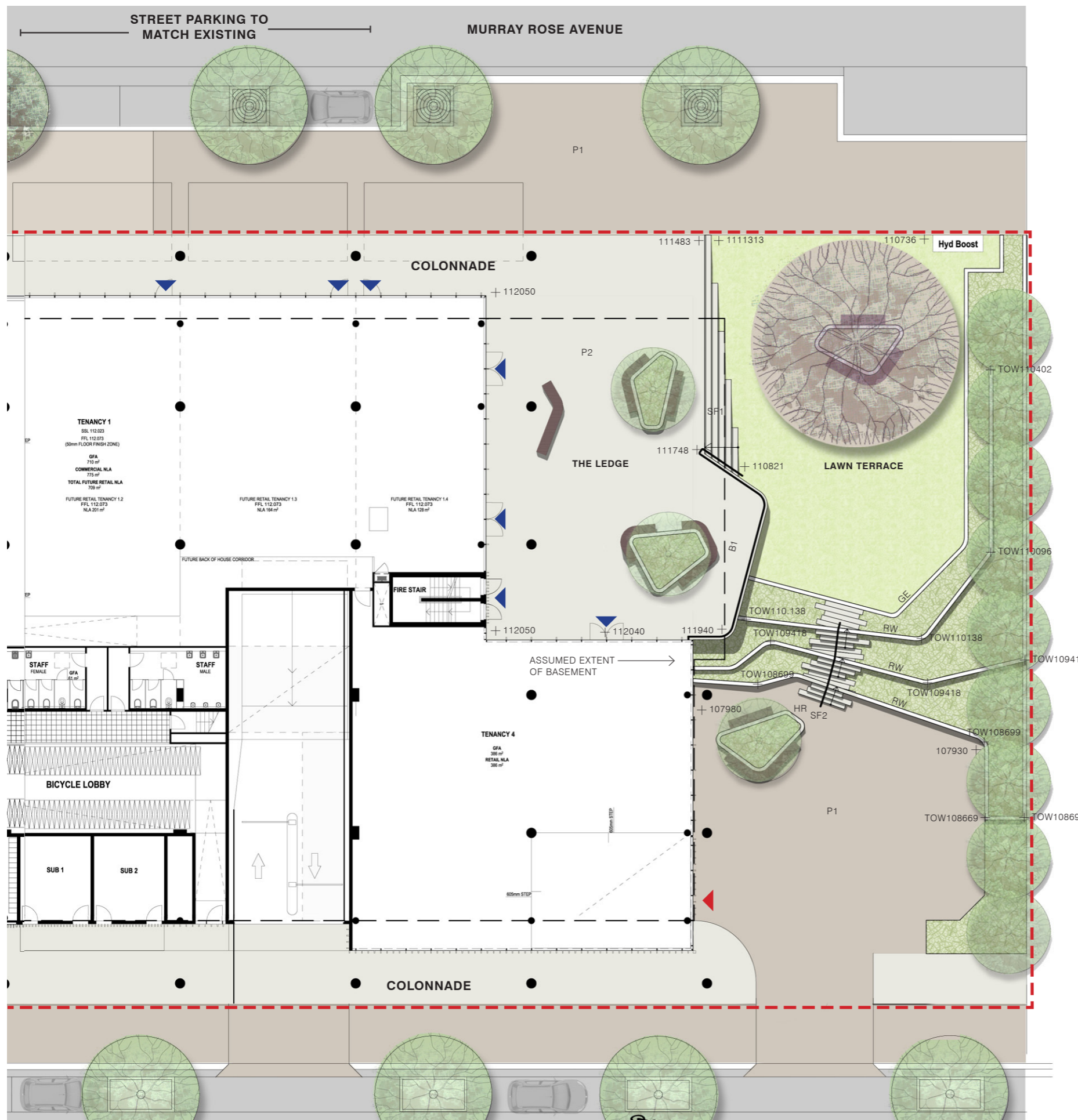
- 4 Murray Rose site boundary
- Future 4 Murray Rose site boundary
- Existing Trihex paving
- Proposed Trihex Paving to match existing
- Pavement to building skirt and colonnades
- Tall shrub screen planting
- Low native planting
- Planted embankment
- Lawn
- Bench Seating
- Raised Planters
- Street tree grates
- Loading dock entry

- Existing trees to be removed
- Existing Brush Box street planting
- Existing Eucalypt planting
- Proposed Brush Box planting
- Proposed trees
- Proposed feature tree

- MNSL Minimum SOPA Level
- MXSL Maximum SOPA Level
- S SOPA level
- AL Architect Level






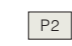





Client THE GPT GROUP Level 52, MLC Centre 19 Martin Place Sydney, NSW 2000 02 82393555	Project Manager LEND LEASE Project Management & Construction (Australia) 30 The Bond, 30 Hickson Road Millers Point, NSW 2000 02 9236 6111	Architect L1 410 Crown Street Surry Hills NSW 2010 Australia t: +61 2 8668 0000	Landscape Architect turf design studio pty ltd 95 Kingsway, Cronulla NSW 2230 p: +61 2 9527 3380 f: +61 2 9527 2307 95 e: sydney@turfdesign.com	Project Landscape Report 4 Murray Rose Avenue Sydney Olympic Park	Drawing Title LANDSCAPE PLAN	Project No. 1311	Dwg No. LA2	Revision E
						Scale 1-400 @ A3	Date 02 Dec 2014	



The Ledge

'The Ledge' builds on the surrounding park family of the Rim Park, The Cutting, and The Chase, and compliments the broader site language through its reference to the Brickpit's many shelves and ledges. Layers of elements in the landscape form a terrain of crevices, junctions and platforms. The 'Ledge' is amplified through the inclusion of a raised terrace edge that optimises the site level differences. Extending beyond the line of the upper terrace the ledge provides vantage to the sites northern perimeter and beyond. Here users can reside and relax with perched views under the canopy of shade trees. A planted series of garden terraces transitions the upper lawn down to the lower loading zone pavement. Casual stairs are provided for access. It is envisaged the stairs will be substantially masked within and by surrounding vegetation. Indigenous native plants and low water use exotics will be incorporated within gardens to minimise water use and maintenance inputs. A selection of small to medium are indicated to provide shade, visual interest, masking, and to create spatial definition.

- B1 Balustrade to 'The Ledge'
- HR Handrail
- SF1,2 Stair flights to AS1428
- RW Retaining Wall - Corefilled block with stone cladding
- GE Garden Bed Edge
-  Retaining wall - Block walls with stone cladding 500mm above adjacent floor level
-  Planting Bed
-  Lawn
-  Seating (With back rests)
-  Continue existing public domain interlocking concrete paver to streetscape and loading dock area
-  Stone pavement to building perimeter and 'The Ledge'
-  Grated Tree Pit
-  Loading Dock Entry
-  Building Entry

- Proposed Tree Planting - e.g.:
-  - Melaleuca stypheleoides
 -  - Callistemon salignus
 -  - Pyrus usseriensis
 -  - Acacia binervia
 -  - Acacia elata
 -  - Syncarpia glommulifera
 -  - Jacaranda mimosifolia



Client
GPT
 The GPT Group
 Level 52, MLC Centre 19 Martin Place
 Sydney, NSW 2000
 02 82393555

Project Manager
Lend Lease
 LEND LEASE Project Management &
 Construction (Australia)
 30 The Bond, 30 Hickson Road
 Millers Point, NSW 2000
 02 9236 6111

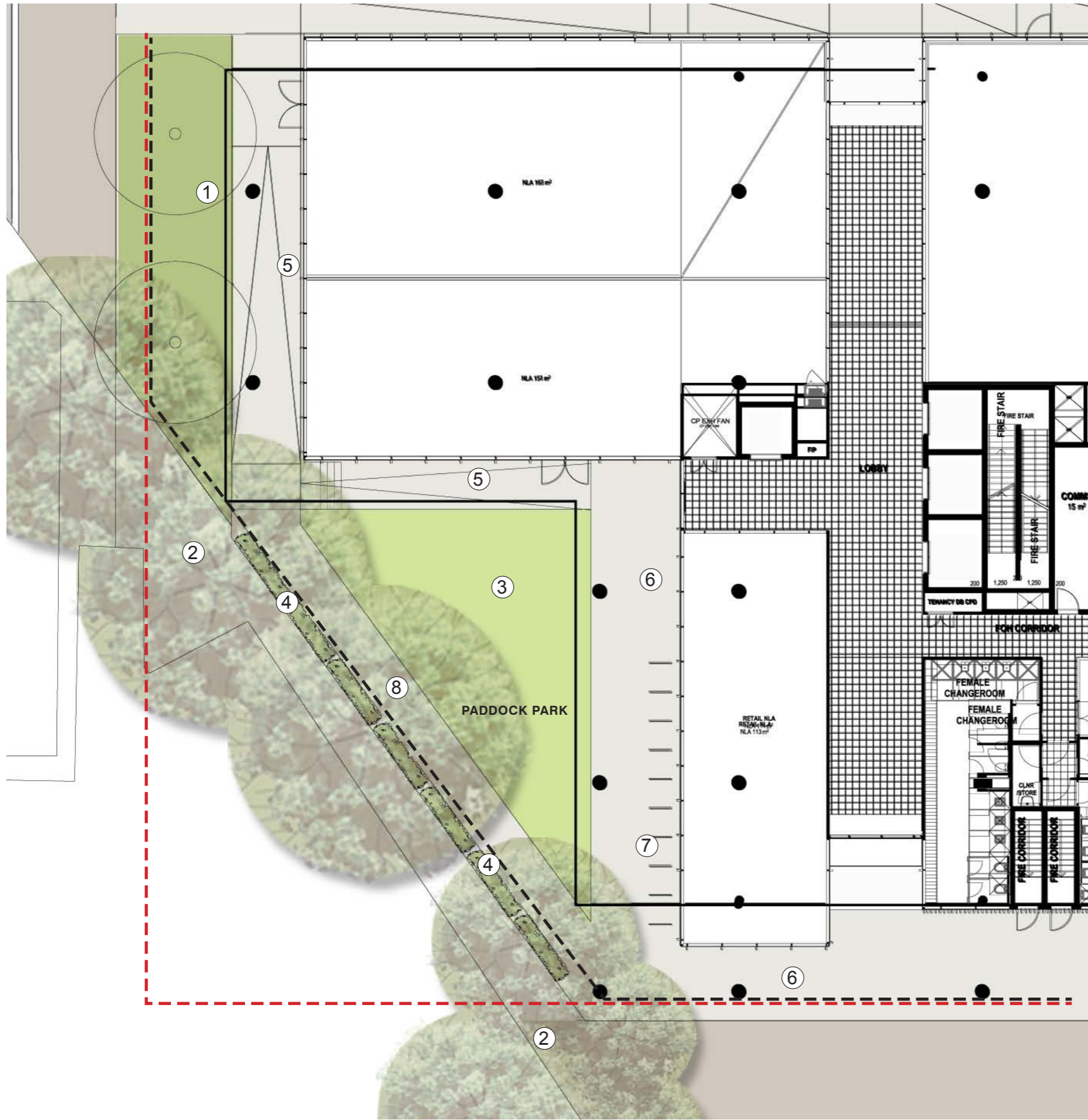
Architect
turner
 L1 410 Crown Street Surry Hills NSW 2010 Australia t: +61 2 8668 0000

Landscape Architect
turf
 turf design studio pty ltd
 95 Kingsway, Cronulla NSW 2230
 p: +61 2 9527 3380 | f: +61 2 9527 2307 95
 e: sydney@turfdesign.com

Project
Landscape Report
 4 Murray Rose Avenue
 Sydney Olympic Park

Drawing Title
THE LEDGE
DETAIL PLAN

Project No.	1311	Dwg No.	LA3	Revision	E
Scale	1-250 @ A3	Date	02 Dec 2014		
Dwg Status	Concept Design				



Paddock Park

Paddock Park will provide a simple planted ground plane on which the new building will reside. New planting and lawn will be situated between the property boundary and the new building skirt connection paths.

Understorey planting will generally be a maximum of 1m high to maintain views and safety, with the exception of tall shrub screen planting to the adjacent 5 Parkview Drive loading dock / car park.

The existing eucalypt planting will be retained along the boundary with 2 new Eucalypts planted toward the corner of Murray Rose Avenue to mask building bulk and scale.

Planting will consist of hardy low water use indigenous species.

- 1 Proposed trees and understorey planting
- 2 Existing Eucalypt planting along existing boundary
- 3 Open lawn breakout space
- 4 Tall shrub screen planting along site boundary
- 5 1:20 graded access paths
- 6 Building colonnade
- 7 Bicycle parking
- 8 Stage 1 Temporary Access Path



Client
GPT
 THE GPT GROUP
 Level 52, MLC Centre 19 Martin Place
 Sydney, NSW 2000
 02 82393555
 The GPT Group

Project Manager
Lend Lease
 LEND LEASE Project Management &
 Construction (Australia)
 30 The Bond, 30 Hickson Road
 Millers Point, NSW 2000
 02 9236 6111

Architect
turner
 L1 410 Crown Street Surry Hills NSW 2010 Australia t: +61 2 8668 0000

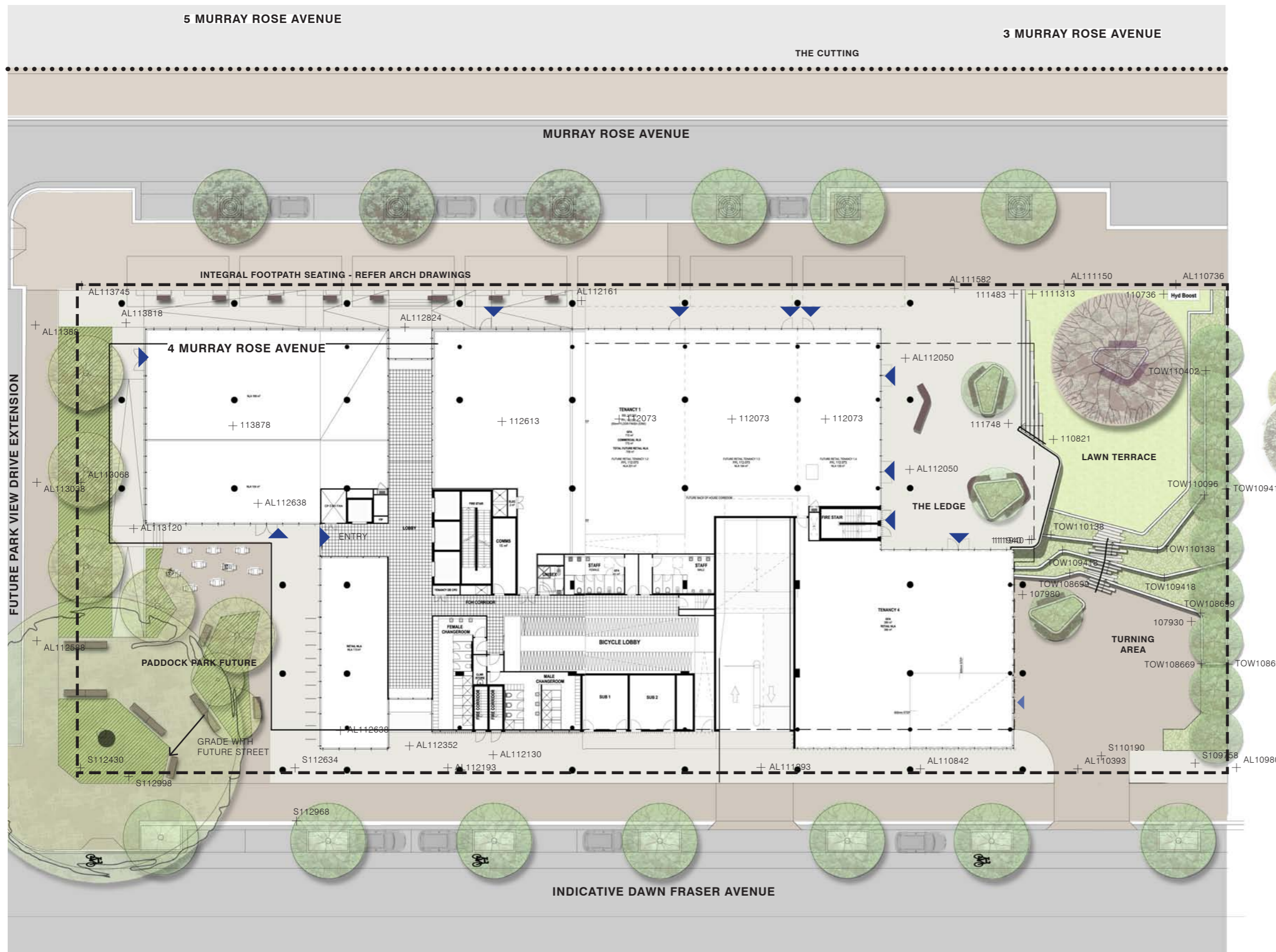
Landscape Architect
turf
 turf design studio pty ltd
 95 Kingsway, Cronulla NSW 2230
 p: +61 2 9527 3380 | f: +61 2 9527 2307 95
 e: sydney@turfdesign.com

Project
 Landscape Report
 4 Murray Rose Avenue
 Sydney Olympic Park

Drawing Title
**PADDOCK PARK
 DETAIL PLAN**

Project No. 1311	Dwg No. LA4	Revision E
Scale 1-200 @ A3	Date 02 Dec 2014	
Dwg Status Concept Design		

4 Murray Rose Future Landscape Plan



- Future 4 Murray Rose Site Boundary
- Existing Trihex Paving
- Proposed Trihex Paving to match existing
- Pavement to building skirt and colonnades
- Low Native Planting
- Planted Embankment
- Lawn
- Bench Seating
- Ledge Platform
- Terraced bleacher seating and stairs
- Loading Dock Entry
- Building Entry
- Existing Brush Box Street Planting
- Proposed Brush Box Planting
- Proposed trees
- Proposed Feature Tree
- Proposed Feature Tree
- S SOPA Level
- AL Architect Level
- TOW Top Of Wall Level



Client
GPT
 The GPT Group
 Level 52, MLC Centre 19 Martin Place
 Sydney, NSW 2000
 02 82393555

Project Manager

 LEND LEASE Project Management &
 Construction (Australia)
 30 The Bond, 30 Hickson Road
 Millers Point, NSW 2000
 02 9236 6111

Architect

 L1 410 Crown Street Surry Hills NSW 2010 Australia t: +61 2 8668 0000

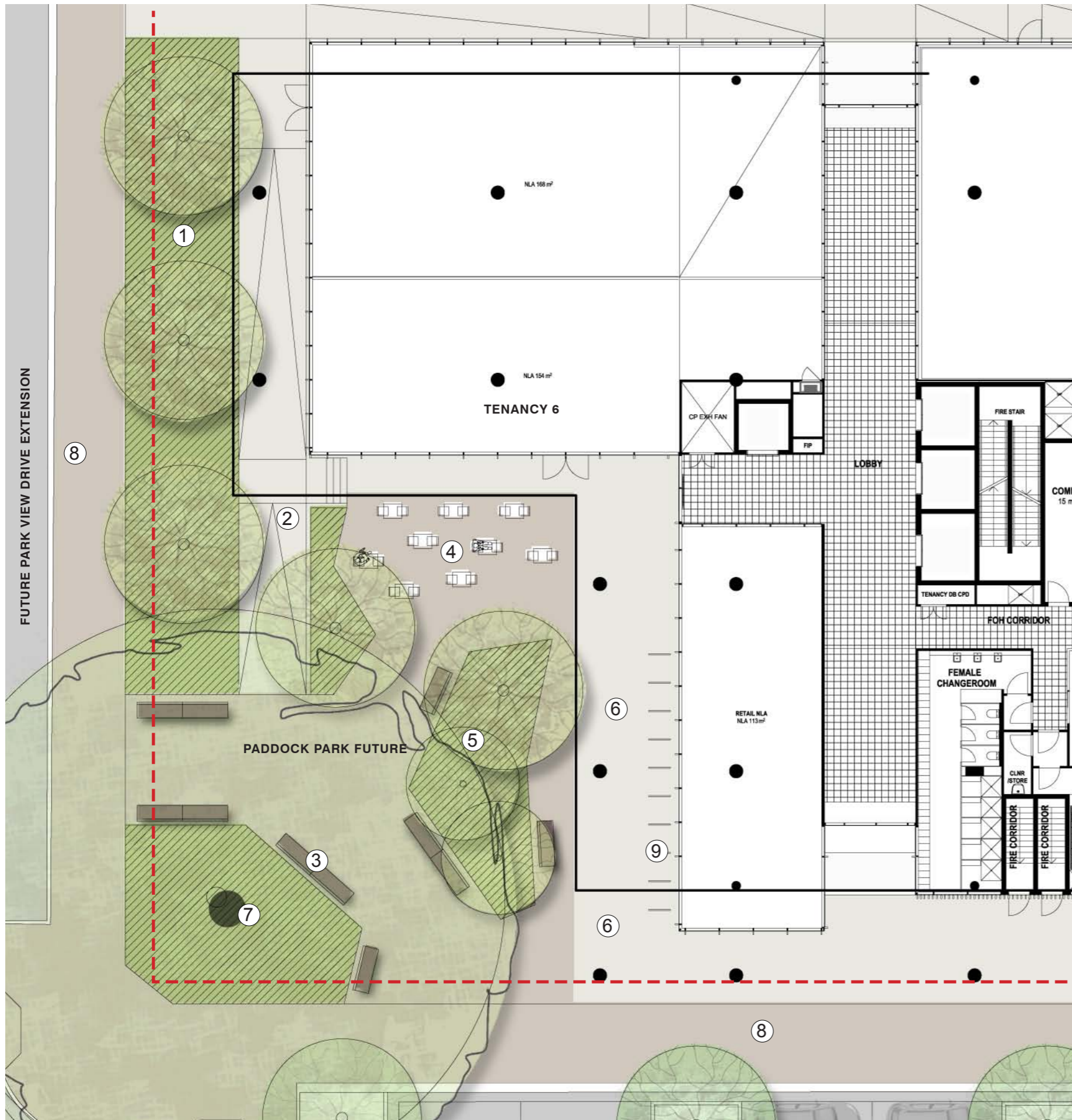
Landscape Architect

 turf design studio pty ltd
 95 Kingsway, Cronulla NSW 2230
 p: +61 2 9527 3380 | f: +61 2 9527 2307 95
 e: sydney@turfdesign.com

Project
Landscape Report
 4 Murray Rose Avenue
 Sydney Olympic Park

Drawing Title
LANDSCAPE PLAN
FUTURE

Project No. 1311	Dwg No. LA5	Revision E
Scale 1-400 @ A3	Date 02 Dec 2014	
Dwg Status Concept Design		



Paddock Park Future

Paddock Park will be completed when the surrounding planned road networks are fully realised. The park itself will provide a strong corner presence with reference to the old stock holding yards that once covered the site.

A feature shade tree will mark the corner and establish an 'umbrella' for the park and adjacent street corner helping to modify extreme temperatures.

The park will grade gently toward the east. A new pathway will be installed to link the building perimeter path directly to the park.

Generous pathways are provided along key desire lines to provide free movement through the space and connect with building entries. Generous provision of seating and bicycle parking provides amenity and will activate the space.

Low native planting and tall, slender-trunked Eucalypts create rooms within the space, and provide other benefits of WSUD, shade, thresholds, and masking building mass.

Planting edges spatially define the Tenancy 6 breakout space and thoroughfare beyond.

- 1 Tree and understory planting to future Parkview Drive frontage
- 2 New pathway access to the park
- 3 Seating with backrests and side supports
- 4 Tenancy 6 breakout space framed by planting
- 5 Central planter defines a series of seating areas and delineates desire lines
- 6 Building colonnade
- 7 Signature tree marking the corner of the site and reflecting the former paddocks. Shade tolerant understory
- 8 Proposed Trihex paving to match existing
- 9 Bicycle parking



Client
GPT
 The GPT Group
 Level 12, MLC Centre 19 Martin Place
 Sydney, NSW 2000
 02 82393555

Project Manager
Lend Lease
 LEND LEASE Project Management &
 Construction (Australia)
 30 The Bond, 30 Hickson Road
 Millers Point, NSW 2000
 02 9236 6111

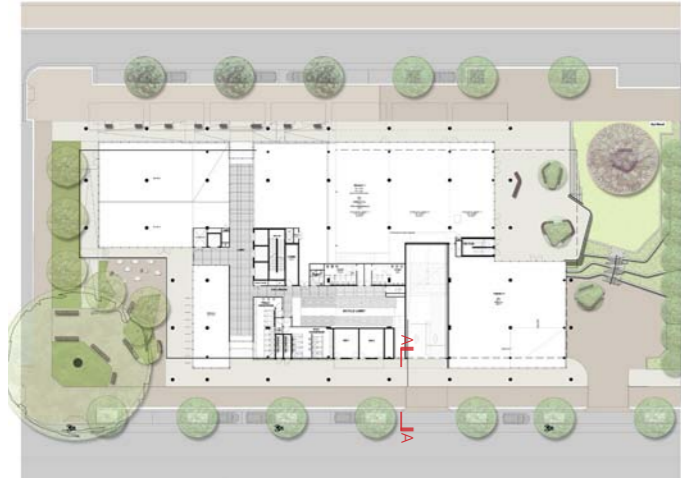
Architect
turner
 L1 410 Crown Street Surry Hills NSW 2010 Australia t: +61 2 8668 0000

Landscape Architect
turf
 turf design studio pty ltd
 95 Kingsway, Cronulla NSW 2230
 p: +61 2 9527 3380 | f: +61 2 9527 2307 95
 e: sydney@turfdesign.com

Project
 Landscape Report
 4 Murray Rose Avenue
 Sydney Olympic Park

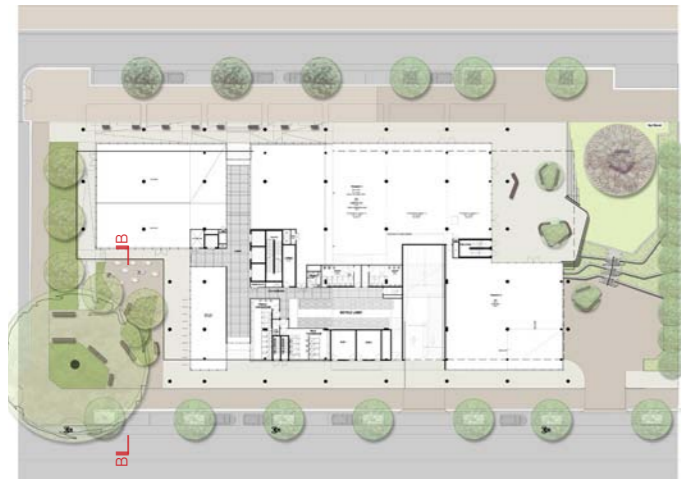
Drawing Title
**PADDOCK PARK
 FUTURE DETAIL PLAN**

Project No. 1311	Dwg No. LA6	Revision E
Scale 1-200 @ A3	Date 02 Dec 2014	
Dwg Status Concept Design		



BUILDING COLONNADE INDICATIVE DAWN FRASER AVENUE

A-A EASTERN BOUNDARY SECTION



INDICATIVE DAWN FRASER AVENUE FOOTPATH FEATURE TREE IN LAWN LAWN BENCH ON PAVING EXHAUST AIR FLUES PLANTING GRADED PATH BUILDING

B-B PADDOCK PARK (FUTURE) SECTION



Client
GPT
 THE GPT GROUP
 Level 52, MLC Centre 19 Martin Place
 Sydney, NSW 2000
 02 82393555
 The GPT Group

Project Manager
Lend Lease
 LEND LEASE Project Management &
 Construction (Australia)
 30 The Bond, 30 Hickson Road
 Millers Point, NSW 2000
 02 9236 6111

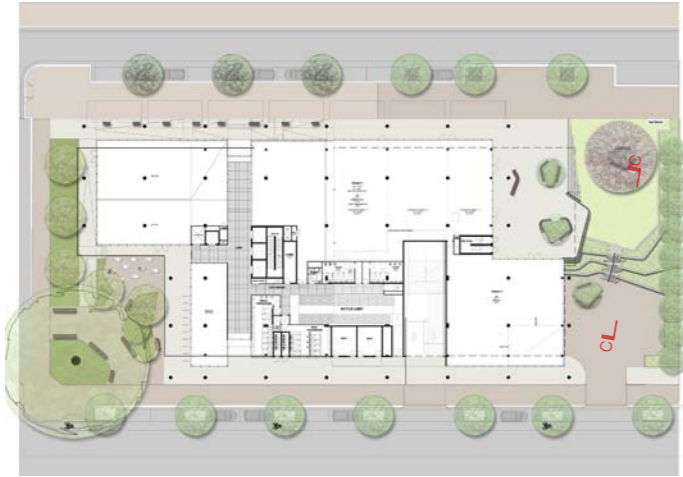
Architect
turner
 L1 410 Crown Street Surry Hills NSW 2010 Australia t: +61 2 8668 0000

Landscape Architect
turf
 turf design studio pty ltd
 95 Kingsway, Cronulla NSW 2230
 p: +61 2 9527 3380 | f: +61 2 9527 2307 95
 e: sydney@turfdesign.com

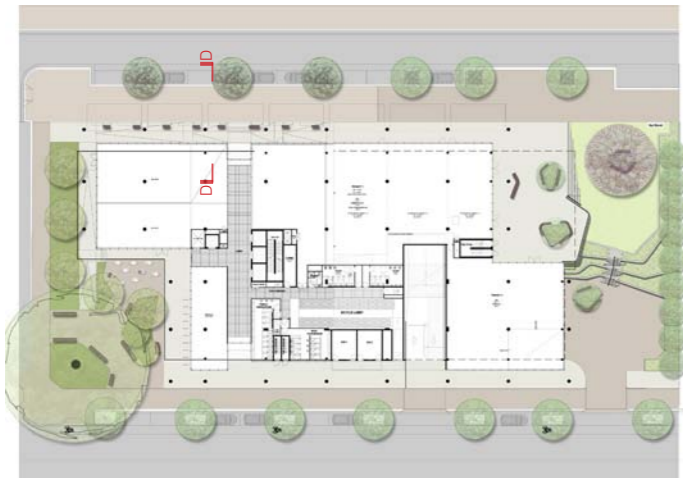
Project
Landscape Report
 4 Murray Rose Avenue
 Sydney Olympic Park

Drawing Title
SECTIONS A-B

Project No. 1311	Dwg No. LA7	Revision E
Scale 1-100 @ A3	Date 02 Dec 2014	
Dwg Status Concept Design		



SECTION C-C



D-D MURRAY ROSE FRONTAGE SECTION



Client
GPT
 The GPT Group
 Level 52, MLC Centre 19 Martin Place
 Sydney, NSW 2000
 02 82393555

Project Manager
Lend Lease
 LEND LEASE Project Management &
 Construction (Australia)
 30 The Bond, 30 Hickson Road
 Millers Point, NSW 2000
 02 9236 6111

Architect
turner
 L1 410 Crown Street Surry Hills NSW 2010 Australia t: +61 2 8668 0000

Landscape Architect
turf
 turf design studio pty ltd
 95 Kingsway, Cronulla NSW 2230
 p: +61 2 9527 3380 | f: +61 2 9527 2307 95
 e: sydney@turfdesign.com

Project
Landscape Report
 4 Murray Rose Avenue
 Sydney Olympic Park

Drawing Title
SECTIONS C-D

Project No. 1311	Dwg No. LA8	Revision E
Scale 1-100 @ A3	Date 02 Dec 2014	
Dwg Status Concept Design		



TRIHEx PAVING TO MATCH EXISTING (P9)



SF02



SF05A



PRECEDENT CUSTOM SEATING WITH BACK RESTS AND SIDE SUPPORTS FOR THE LEDGE RAISED PLANTER (CF1)

Urban elements & Materials

The proposed materials are generally in accordance with Urban Element Design Manual (UEDM) 2009, including the following standard elements:

- Trihex 80mm interlocking precast pavers (P9)
- Free-standing timber bench seat with armrests (SF02)
- Platform bench seat - 900mm (SF05a)

In addition to these standard elements, custom seating with backrests and side supports (CF1) is proposed to The Ledge around the raised planter (as shown in the drawings). This seating will be detailed in accord with SF02 seating to ensure consistency the suite of furniture elements. This seating type is required to satisfy the need for seating with backrests and side supports on The Ledge.

Backrests to other benches on The Ledge are not considered appropriate, as their location requires bidirectional use. SF05a seating will be specified here.



Client
GPT
 THE GPT GROUP
 Level 52, MLC Centre 19 Martin Place
 Sydney, NSW 2000
 02 82393555

Project Manager

 LEND LEASE Project Management &
 Construction (Australia)
 30 The Bond, 30 Hickson Road
 Millers Point, NSW 2000
 02 9236 6111

Architect

 L1 410 Crown Street Surry Hills NSW 2010 Australia t: +61 2 8668 0000

Landscape Architect

 turf design studio pty ltd
 95 Kingsway, Cronulla NSW 2230
 p: +61 2 9527 3380 | f: +61 2 9527 2307 95
 e: sydney@turfdesign.com

Project
 Landscape Report
 4 Murray Rose Avenue
 Sydney Olympic Park

Drawing Title
**URBAN ELEMENTS
 & MATERIALS**

Project No. 1311	Dwg No. LA9	Revision E
Scale 1:100 A3	Date 02 Dec 2014	
Dwg Status Concept Design		