



ARTIST IMPRESSION - NORTH EAST VIEW



ARTIST IMPRESSION - NORTH WEST VIEW

NSW GOVERNMENT
Planning

Issued under the Environmental Planning and Assessment Act 1979

Approved Application No. 6074

granted on the 9/4/14

Signed *[Signature]*

Sheet No. 1 of 13

USE FIGURED DIMENSIONS ONLY. DO NOT SCALE.
ALL DIMENSIONS SHALL BE VERIFIED ON SITE AND
DISCREPANCIES IMMEDIATELY BROUGHT TO THE
ATTENTION OF THE PROJECT MANAGER FOR
RESOLUTION.

"CLOUDS" & REVISIONS ARE INTENDED AS GUIDES
AND DO NOT NECESSARILY DESCRIBE THE FULL
EXTENT OF REVISIONS. ASCERTAIN FULL EXTENT
BY COMPARISON WITH PREVIOUS VERSION.

QA
CHECK

Subject	By	Date	Subject	By	Date	REV	REVISION DESCRIPTION	DATE	BY	REV	REVISION DESCRIPTION	DATE	BY
RDS			STRUCT			1	FIRST ISSUE	01.11.13	HS				
ARCH			SPEC CONS										
AUT			SERV										



TRUE
NORTH

PROJECT
NORTH

Project
NORWEST
PRIVATE HOSPITAL

Principal
HEALTHSCOPE LIMITED

Block/ Zone	Drawn	Checked	Date	Scale/s
A, B AND D	HS	AD	15.09.2013	N/A

Drawing Title
NEW WING PROJECT
ARTIST IMPRESSION PERSPECTIVES

ISSUED FOR DGR SUBMISSION

HEALTH PROJECTS INTERNATIONAL
Architects and Health Facility Planners
Level 11, 100 Pitt Street
Sydney NSW 2000
Ph: (02) 9250 4700 Fax: (02) 9250 4700

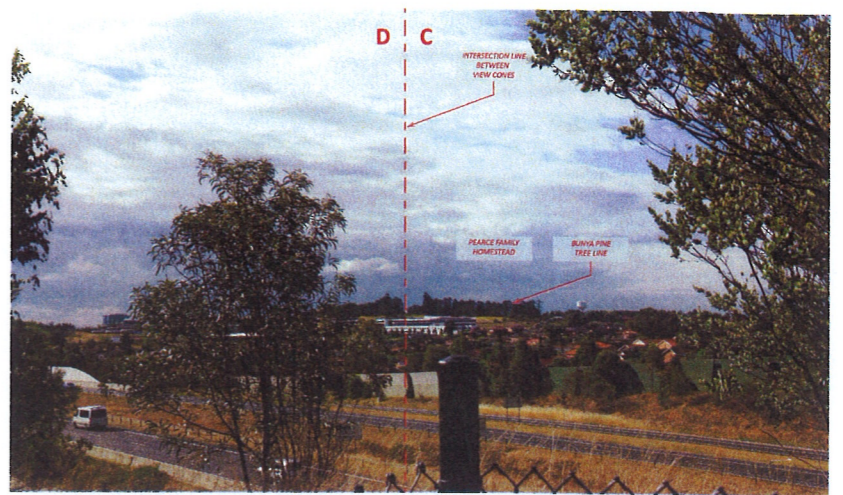
CAD File: NWP12-VIEW
Drawing: NWP12-DGR-V
Issue: 1



PERSPECTIVE VIEW 1: SOUTHERN ELEVATION OF PROPOSED HOSPITAL EXTENSION VIEWED FROM NORBRIK DRIVE



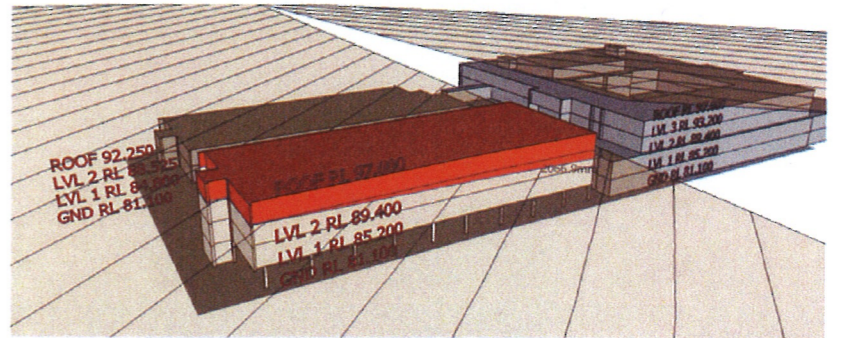
VIEW 1: VIEW OF EXISTING NORWEST PRIVATE HOSPITAL AND MEDICAL CENTRE FROM BELLA VISTA FARM



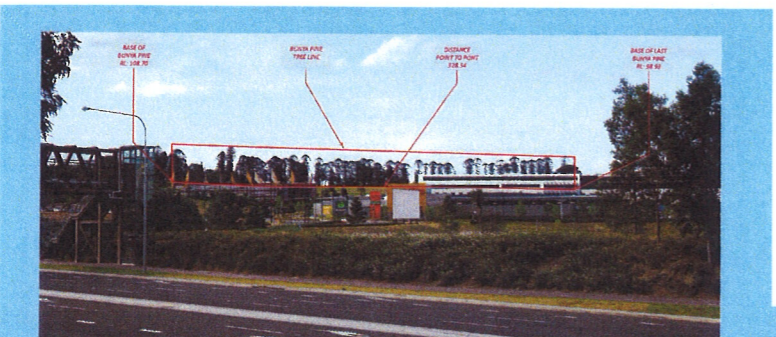
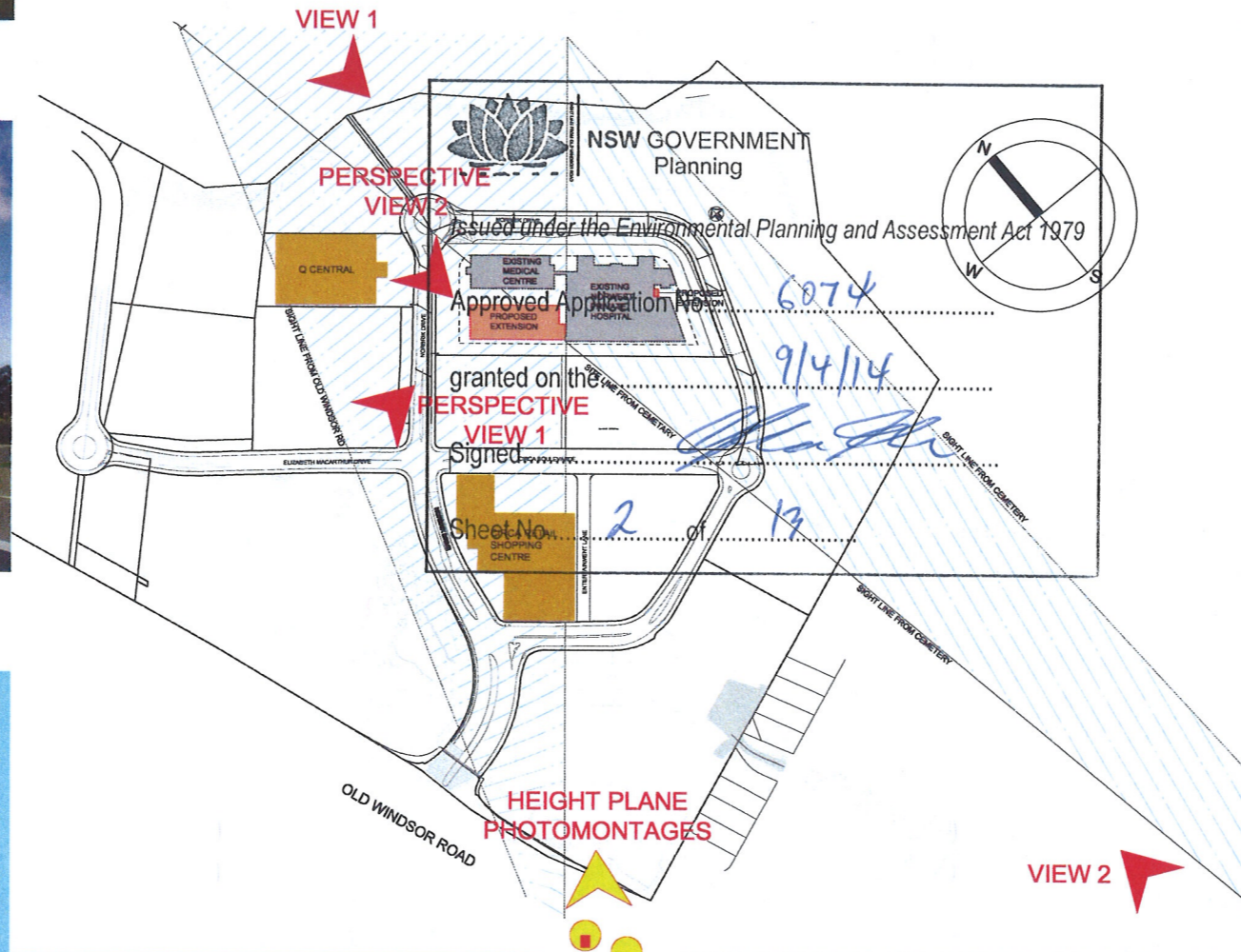
VIEW 2: VIEW OF NORWEST PRIVATE HOSPITAL FROM PEARCE FAMILY CEMETERY



PERSPECTIVE VIEW 2: NORTHERN ELEVATION OF PROPOSED HOSPITAL EXTENSION VIEWED FROM NORBRIK DRIVE



HEIGHT PLANE VIEW: PERSPECTIVE VIEW OF PROPOSED HOSPITAL EXTENSION & HEIGHT PLANES



CLOSE-UP PHOTOMONTAGE FROM HEIGHT PLANE COORDINATE POSITION 1



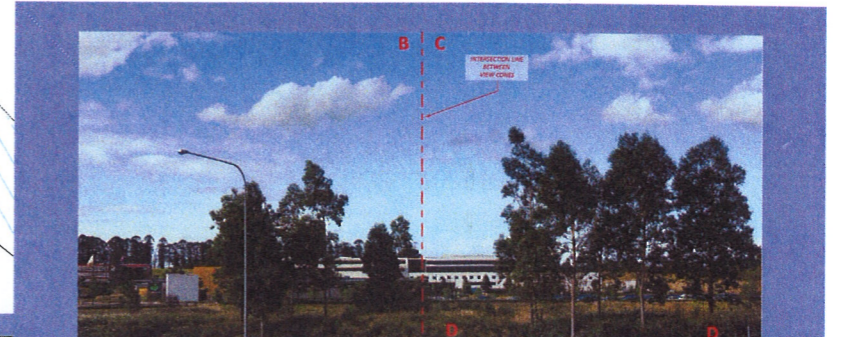
PHOTOMONTAGE FROM HEIGHT PLANE COORDINATE POSITION 1



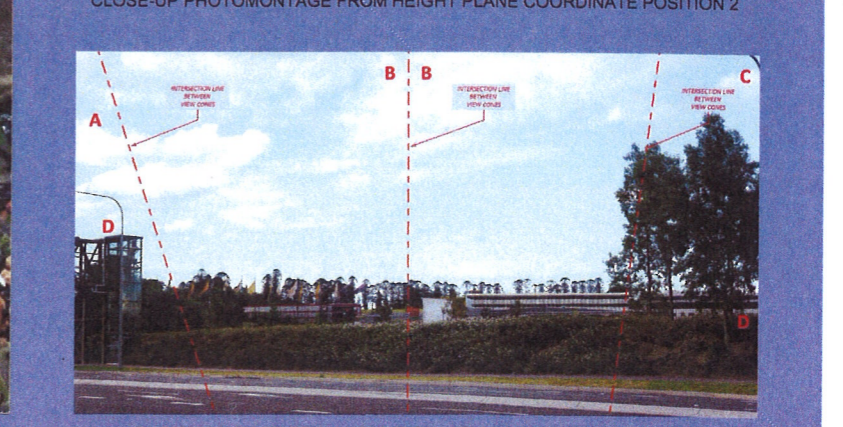
HEIGHT PLANE COORDINATE POSITION 1



HEIGHT PLANE COORDINATE POSITION 2



CLOSE-UP PHOTOMONTAGE FROM HEIGHT PLANE COORDINATE POSITION 2



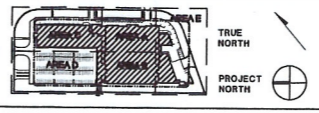
PHOTOMONTAGE FROM HEIGHT PLANE COORDINATE POSITION 2

<p>USE FIGURED DIMENSIONS ONLY. DO NOT SCALE. ALL DIMENSIONS SHALL BE VERIFIED ON SITE AND DISCREPANCIES IMMEDIATELY BROUGHT TO THE ATTENTION OF THE PROJECT MANAGER FOR RESOLUTION.</p>	<p>"CLOUDS" & REVISIONS ARE INTENDED AS GUIDES AND DO NOT NECESSARILY DESCRIBE THE FULL EXTENT OF REVISIONS. ASCERTAIN FULL EXTENT BY COMPARISON WITH PREVIOUS VERSION.</p>	<p>QA CHECK</p>	<p>Subject By Date</p>	<p>Subject By Date</p>	<p>Subject By Date</p>	<p>REVISION DESCRIPTION</p>	<p>DATE BY REV</p>	<p>REVISION DESCRIPTION</p>	<p>DATE BY REV</p>	<p>REVISION DESCRIPTION</p>	<p>DATE BY REV</p>
			<p>RDS</p>	<p>STRUCT</p>	<p>PRQA ARCH</p>	<p>1 FIRST ISSUE</p>	<p>01.11.13 HS</p>				

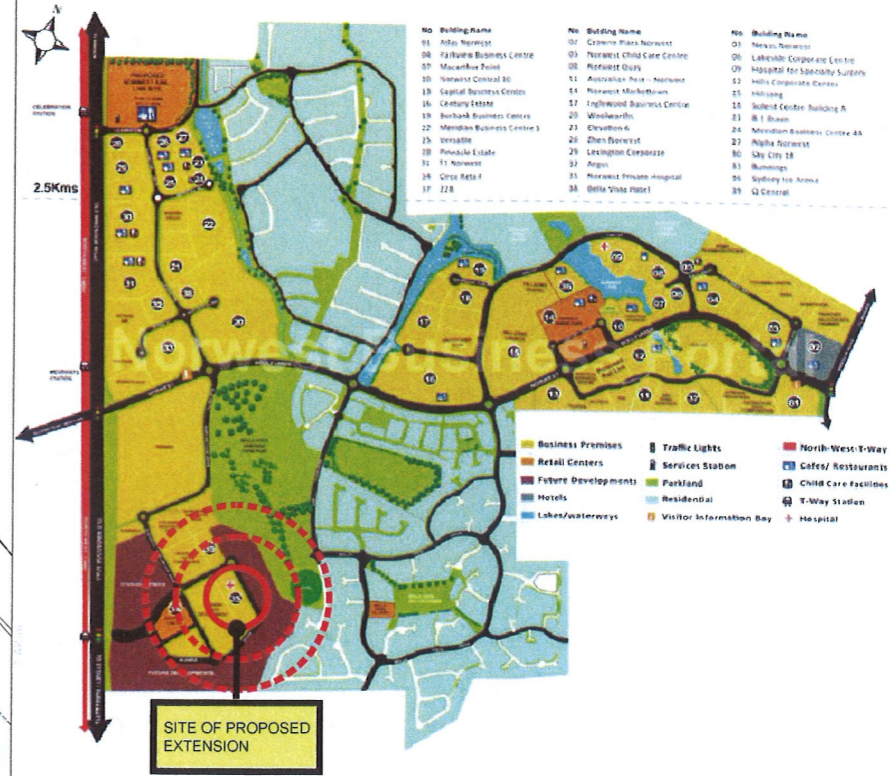
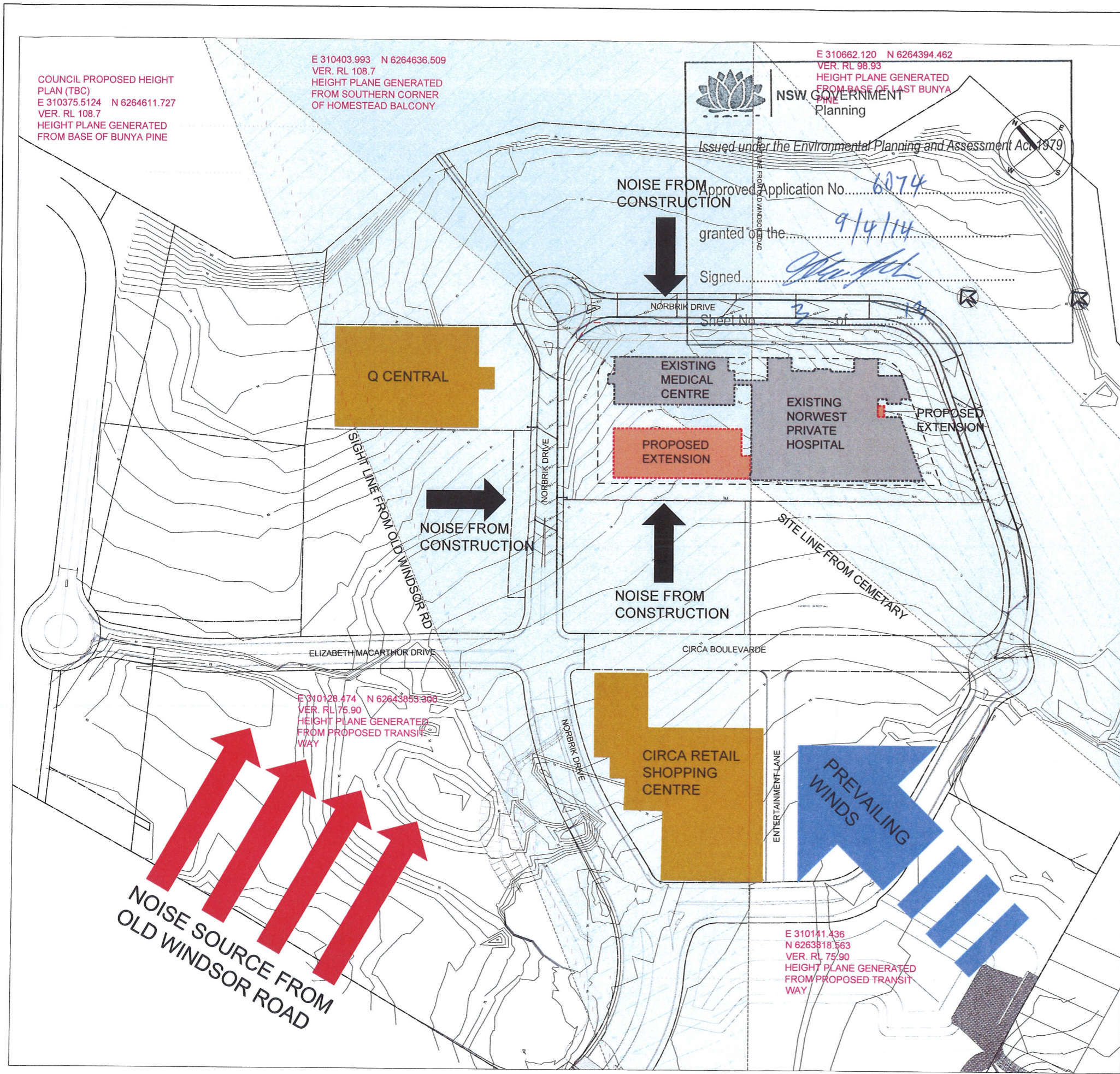
ISSUED FOR DGR SUBMISSION

HEALTH PROJECTS INTERNATIONAL
 Architects and Health Facility Planners
 Level 10, 100 Pitt Street
 Sydney NSW 2000
 Phone: (02) 9250-0000
 Fax: (02) 9250-0000

Project: **NORWEST PRIVATE HOSPITAL**
 Block/ Zone: **A, B AND D**
 Drawn: HS
 Checked: AD
 Date: 15.09.2013
 Scale/s: 1:250
 Drawing Title: **NEW WING PROJECT VIEW & PHOTOMONTAGES**
 Project: **HEALTHSCOPE LIMITED**



CAD File: NWP12-P-PM
Sheet: NWP12-DGR-PM1



THE SITE OF PROPOSED EXTENSION
 The site of the proposed extension is within the existing Norwest Private Hospital site located in the Norwest business park.

PHYSICAL CHARACTERISTICS
 The site slopes approximately 8m in height diagonally across the site from south-east to north-west. Buildings adjacent to the site include the Circa Retail Shopping Centre located within the Circa Retail Precinct to the south of the Hospital site, as well as the Q Central Lease Offices to the west.

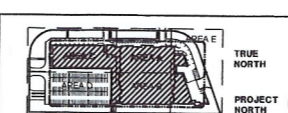
THE SURROUNDS
 With the exception of the Circa Retail Shopping Centre and the Q Central Lease Offices, most of the areas around the site are still being developed as per the Norwest Business Park masterplan, all still under construction. The proposed developments are low rise commercial buildings with large footprints. Further to the east, south and west are largely single or double storeyed dwellings. To the north-east of the site is the Bella Vista Heritage Farm Park, thus the site is in the vicinity of its conservation view corridor.



USE FIGURED DIMENSIONS ONLY. DO NOT SCALE. ALL DIMENSIONS SHALL BE VERIFIED ON SITE AND DISCREPANCIES IMMEDIATELY BROUGHT TO THE ATTENTION OF THE PROJECT MANAGER FOR RESOLUTION.

"CLOUDS" & REVISIONS ARE INTENDED AS GUIDES AND DO NOT NECESSARILY DESCRIBE THE FULL EXTENT OF REVISIONS. ASCERTAIN FULL EXTENT BY COMPARISON WITH PREVIOUS VERSION.

Subject	By	Date	Subject	By	Date	Subject	By	Date	REV	REVISION DESCRIPTION	DATE	BY	REV	REVISION DESCRIPTION	DATE	BY
ROB			STRUCT			PROJ ARCH			1	FIRST ISSUE	01/11/13	HS				
ARCH			SPEC CONG													
AUT			SEW													



Project: **NORWEST PRIVATE HOSPITAL**

Block/ Zone: **A, B AND D**

Drawing Title: **NEW WING PROJECT SITE ANALYSIS**

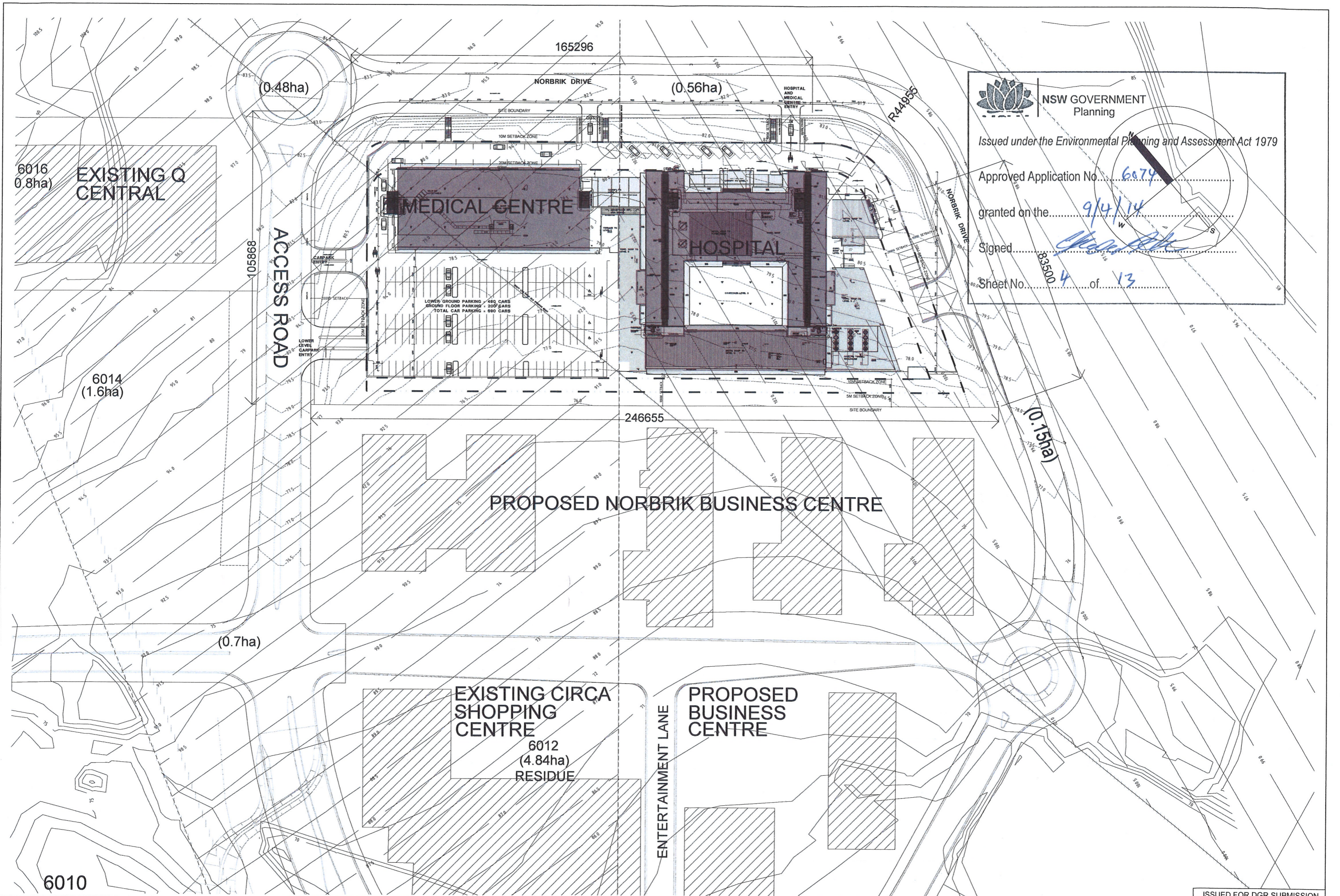
Drawn: HS
 Checked: AD
 Date: 15.09.2013
 Scale/s: 1:250


Principal: **HEALTHSCOPE LIMITED**

ISSUED FOR DGR SUBMISSION

HPI HEALTH PROJECTS INTERNATIONAL
 Architects and Health Facility Planners
 Level 10, 100 Pitt Street
 Sydney NSW 2000
 Ph: (02) 9452 4199

CAD File: **NWP12-P-SA**
 Sheet: **NWP12-DGR-SA1**

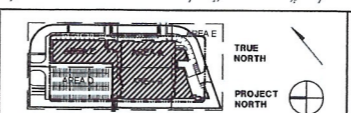



NSW GOVERNMENT Planning
 Issued under the Environmental Planning and Assessment Act 1979
 Approved Application No. 6079
 granted on the 9/4/14
 Signed [Signature]
 Sheet No. 4 of 13


USE FIGURED DIMENSIONS ONLY. DO NOT SCALE. ALL DIMENSIONS SHALL BE VERIFIED ON SITE AND DISCREPANCIES IMMEDIATELY BROUGHT TO THE ATTENTION OF THE PROJECT MANAGER FOR RESOLUTION.

"CLOUDS" & REVISIONS ARE INTENDED AS GUIDES AND DO NOT NECESSARILY DESCRIBE THE FULL EXTENT OF REVISIONS. ASCERTAIN FULL EXTENT BY COMPARISON WITH PREVIOUS VERSION.

Subject	By	Date	Subject	By	Date	Subject	By	Date	REV	REVISION DESCRIPTION	DATE	BY	REV	REVISION DESCRIPTION	DATE	BY	REV	REVISION DESCRIPTION	DATE	BY
ROD			STRUCT			PROJ ARCH			1	FIRST ISSUE	01/11/13	HS								
ARCH			SPEC. CONG																	
AUT			SEW																	



Project: **NORWEST PRIVATE HOSPITAL**
 Drawing Title: **NEW WING PROJECT SITE SURVEY PLAN**
 Block/Zone: **A, B AND D**
 Drawn: **HS**
 Checked: **AD**
 Date: **15.03.2013**
 Scale: **1:500**
 Principal: **HEALTHSCOPE LIMITED**

ISSUED FOR DGR SUBMISSION

HEALTH PROJECTS INTERNATIONAL
 Architects and Health Facility Planners
 Ground Floor, Suite 1, 68 Ameer Street
 Moore Park, NSW 2001
 Ph: (02) 9450 4338 Fax: (02) 9450 4338
 CAD File: **NWP12-DGR-SS1**
 Dwg No: **NWP12-DGR-SS1**
 Issue: **1**



NSW GOVERNMENT
Planning

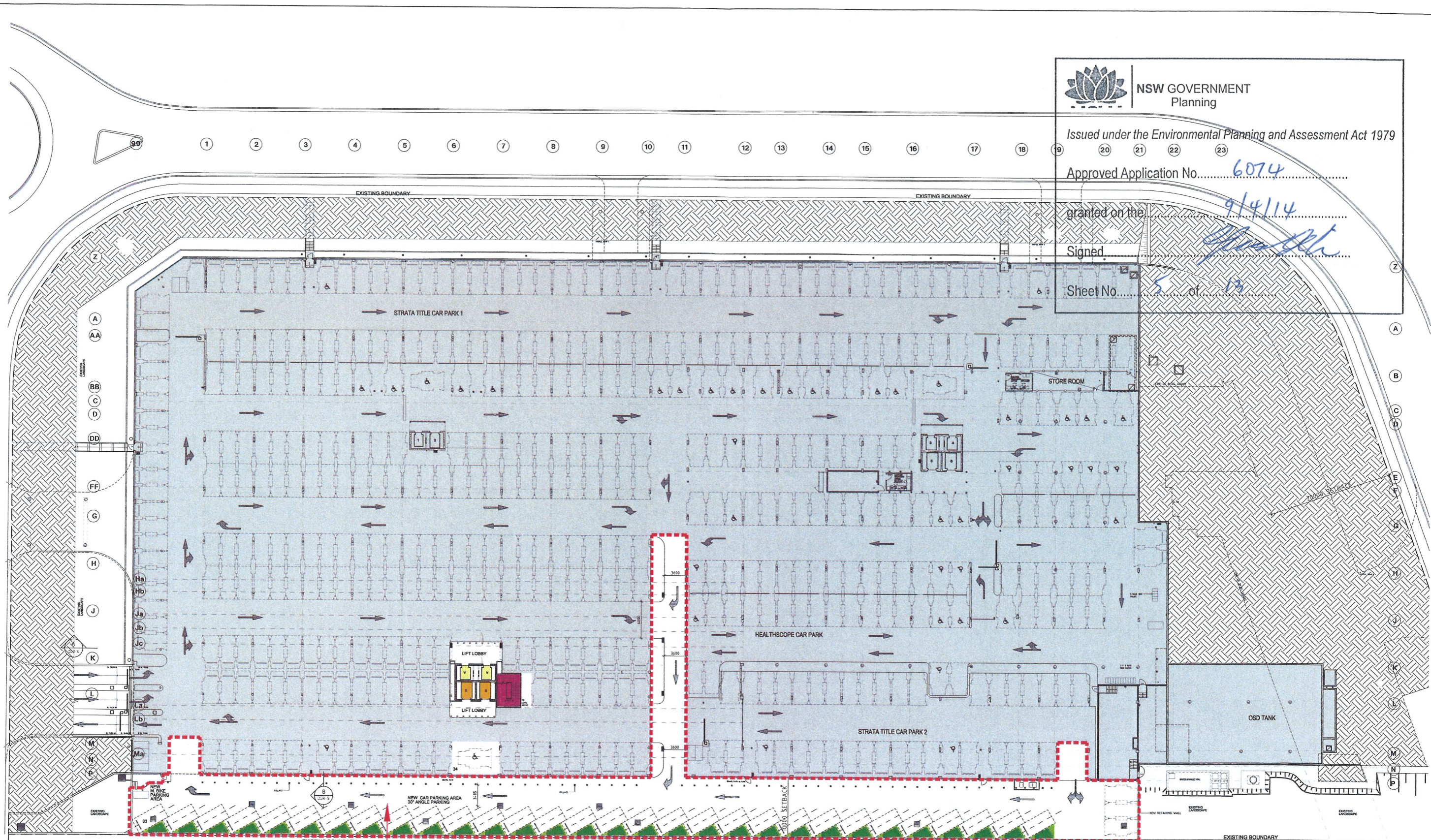
Issued under the Environmental Planning and Assessment Act 1979

Approved Application No. 6074

granted on the 9/4/14

Signed [Signature]

Sheet No. 5 of 13



1
CAR PARKING BAYS (NETT INCREASE 17 SPACES)
NEW - 34 SPACES
DEMOLISHED - 17 SPACES

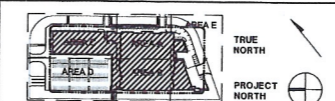
LEGEND
EXISTING CONDITION, NOT IN SCOPE

ISSUED FOR DGR SUBMISSION

USE FIGURED DIMENSIONS ONLY. DO NOT SCALE.
ALL DIMENSIONS SHALL BE VERIFIED ON SITE AND
DISCREPANCIES IMMEDIATELY BROUGHT TO THE
ATTENTION OF THE PROJECT MANAGER FOR
RESOLUTION.

"CLOUDS" & REVISIONS ARE INTENDED AS GUIDES
AND DO NOT NECESSARILY DESCRIBE THE FULL
EXTENT OF REVISIONS. ASCERTAIN FULL EXTENT
BY COMPARISON WITH PREVIOUS VERSION.

Subject	By	Date	Subject	By	Date	Subject	By	Date	REV	REVISION DESCRIPTION	DATE	BY	REV	REVISION DESCRIPTION	DATE	BY
ROS			STRUCT			PROJ ARCH			1	FIRST ISSUE	01/11/13	HS				
ARCH			SPEC CONG													
AUT			SERV													



Project
NORWEST
PRIVATE HOSPITAL
Principal
HEALTHSCOPE LIMITED

Block/ Zone
A, B AND D
Drawing Title
NEW WING PROJECT
BASEMENT LEVEL FLOOR PLAN (OVERALL)

Drawn
Checked
Date
Scale/s
15/09/2013
1:250
HEALTH PROJECTS INTERNATIONAL
Architects and Health Facility Planners
ACN 099 038 995
Ground Floor Suite 1, 422 Alfred Street
Milton Park, NSW 2511
Ph: (02) 9438 4100
Fax: (02) 9438 4200
CAD File
NWP12-P-B1
Dep No.
NWP12-DGR-B1
Issue



NSW GOVERNMENT
Planning

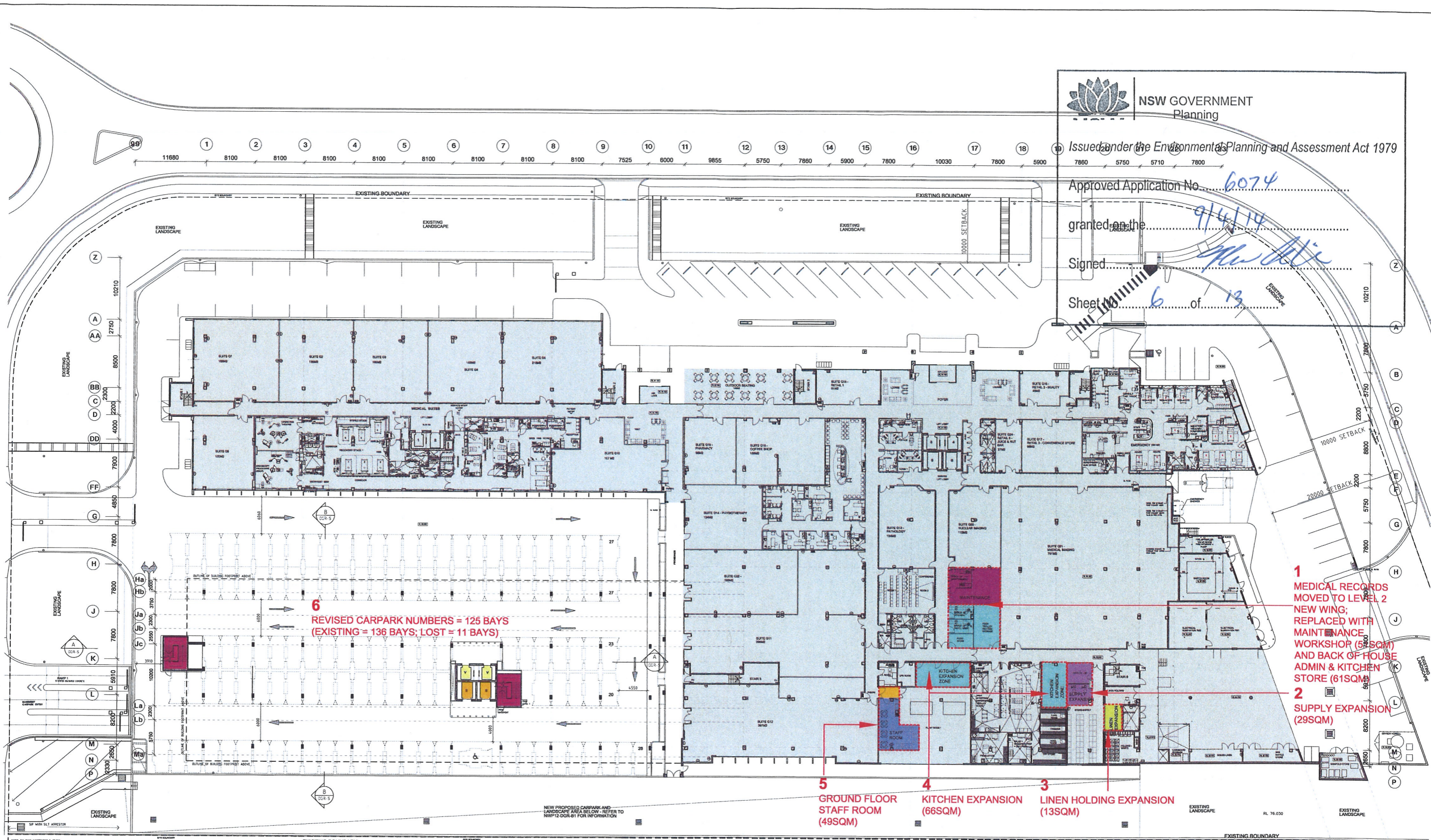
Issued under the Environmental Planning and Assessment Act 1979

Approved Application No. 6074

granted on the 9/4/14

Signed [Signature]

Sheet No. 6 of 13



6
REVISED CARPARK NUMBERS = 125 BAYS
(EXISTING = 136 BAYS; LOST = 11 BAYS)

- 1** MEDICAL RECORDS MOVED TO LEVEL 2 NEW WING; REPLACED WITH MAINTENANCE WORKSHOP (59SQM) AND BACK OF HOUSE ADMIN & KITCHEN STORE (61SQM)
- 2** SUPPLY EXPANSION (29SQM)
- 3** LINEN HOLDING EXPANSION (13SQM)
- 4** KITCHEN EXPANSION (66SQM)
- 5** GROUND FLOOR STAFF ROOM (49SQM)

NEW PROPOSED CARPARK AND LANDSCAPE AREA BELOW - REFER TO NWP12-DGR-S1 FOR INFORMATION

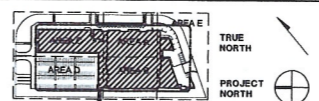
LEGEND
[Symbol] EXISTING CONDITION, NOT IN SCOPE

ISSUED FOR DGR SUBMISSION

USE FIGURED DIMENSIONS ONLY. DO NOT SCALE. ALL DIMENSIONS SHALL BE VERIFIED ON SITE AND DISCREPANCIES IMMEDIATELY BROUGHT TO THE ATTENTION OF THE PROJECT MANAGER FOR RESOLUTION.

"CLOUDS" & REVISIONS ARE INTENDED AS GUIDES AND DO NOT NECESSARILY DESCRIBE THE FULL EXTENT OF REVISIONS ASCERTAIN FULL EXTENT BY COMPARISON WITH PREVIOUS VERSION.

Subject	By	Date	Subject	By	Date	Subject	By	Date	REV	REVISION DESCRIPTION	DATE	BY	REV	REVISION DESCRIPTION	DATE	BY	REV	REVISION DESCRIPTION	DATE	BY
RDS			STRUCT			PROJ ARCH			1	FIRST ISSUE	01/11/13	HS								
ARCH			SPEC CONS																	
AUT			SERV																	

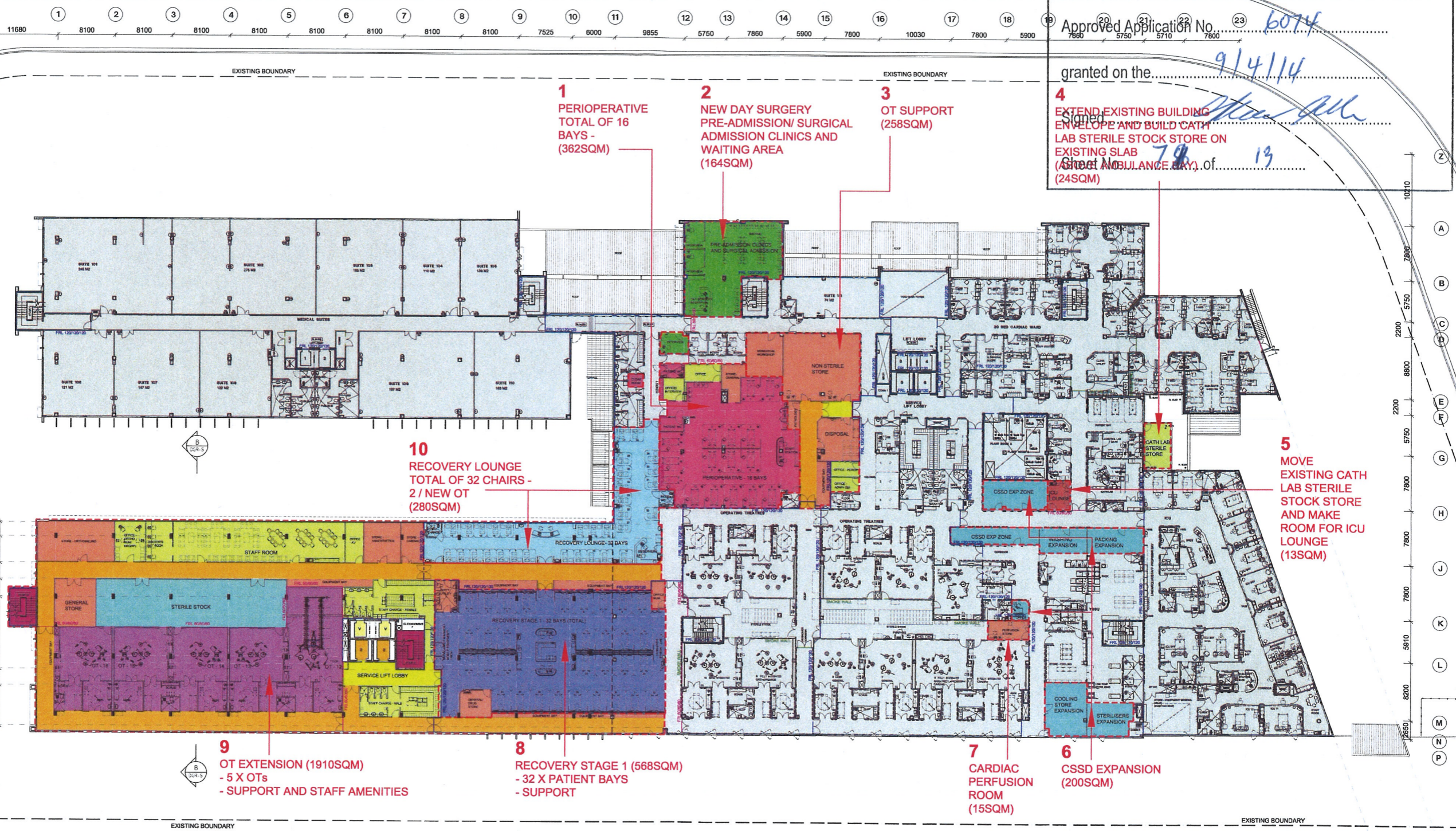


Project
NORWEST PRIVATE HOSPITAL
Principal
HEALTHSCOPE LIMITED

Block/Zone
A, B AND D
Drawing Title
NEW WING PROJECT GROUND LEVEL FLOOR PLAN (OVERALL)

HEALTH PROJECTS INTERNATIONAL
Architects and Health Facility Planners
CAD File: NWP12-P-G
Drawing No: NWP12-DGR-G

Approved Application No. **6074**
 granted on the **9/4/14**
 (Signed) *[Signature]*
 Sheet No. **78** of **13**
 (Sheet No. **78** of **13**)
 (24SQM)



1
 PERIOPERATIVE
 TOTAL OF 16
 BAYS -
 (362SQM)

2
 NEW DAY SURGERY
 PRE-ADMISSION/ SURGICAL
 ADMISSION CLINICS AND
 WAITING AREA
 (164SQM)

3
 OT SUPPORT
 (258SQM)

4
 EXTEND EXISTING BUILDING
 ENVELOPE AND BUILD CATH
 LAB STERILE STOCK STORE ON
 EXISTING SLAB
 (Sheet No. **78** of **13**)
 (24SQM)

5
 MOVE
 EXISTING CATH
 LAB STERILE
 STOCK STORE
 AND MAKE
 ROOM FOR ICU
 LOUNGE
 (13SQM)

10
 RECOVERY LOUNGE
 TOTAL OF 32 CHAIRS -
 2 / NEW OT
 (280SQM)

9
 OT EXTENSION (1910SQM)
 - 5 X OTs
 - SUPPORT AND STAFF AMENITIES

8
 RECOVERY STAGE 1 (568SQM)
 - 32 X PATIENT BAYS
 - SUPPORT

7
 CARDIAC
 PERFUSION
 ROOM
 (15SQM)

6
 CSSD EXPANSION
 (200SQM)

LEGEND
 EXISTING CONDITION, NOT IN SCOPE

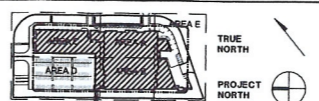
ISSUED FOR DGR SUBMISSION

HP HEALTH PROJECTS INTERNATIONAL
 Architects and Health Facility Planners
 Level 10, 100 Pitt Street, Sydney, NSW 2000
 Tel: (02) 9232 4000 Fax: (02) 9232 4001

USE FIGURED DIMENSIONS ONLY. DO NOT SCALE.
 ALL DIMENSIONS SHALL BE VERIFIED ON SITE AND
 DISCREPANCIES IMMEDIATELY BROUGHT TO THE
 ATTENTION OF THE PROJECT MANAGER FOR
 RESOLUTION.

"CLOUDS" & REVISIONS ARE INTENDED AS GUIDES
 AND DO NOT NECESSARILY DESCRIBE THE FULL
 EXTENT OF REVISIONS. ASCERTAIN FULL EXTENT
 BY COMPARISON WITH PREVIOUS VERSION.

Subject	By	Date	Subject	By	Date	REV	REVISION DESCRIPTION	DATE	BY	REV	REVISION DESCRIPTION	DATE	BY	REV	REVISION DESCRIPTION	DATE	BY
ROD			STRUCT			1	FIRST ISSUE	01/11/13	HS								
ARCH			SPEC CONVS														
AUT			SERV														



Project
**NORWEST
 PRIVATE HOSPITAL**

Block/ Zone
A, B AND D

Drawing Title
**NEW WING PROJECT
 LEVEL 1 FLOOR PLAN (OVERALL)**

Drawn: HS
 Checked: AC
 Date: 15.09.2013
 Scale: 1:250

CAD File: NWP12-P-1
 Dep No: NWP12-DGR-1
 Issue: 1



NSW GOVERNMENT
Planning

Issued under the Environmental Planning and Assessment Act 1979

Approved Application No. 60274

granted on the 9/4/14

Signed [Signature]

Sheet No. 8 of 13

11680 8100 8100 8100 8100 8100 8100 8100 8100 8100 7525 6000 9855 5750 7860 5900 7800 10030 7800 5900

EXISTING BOUNDARY

EXISTING BOUNDARY

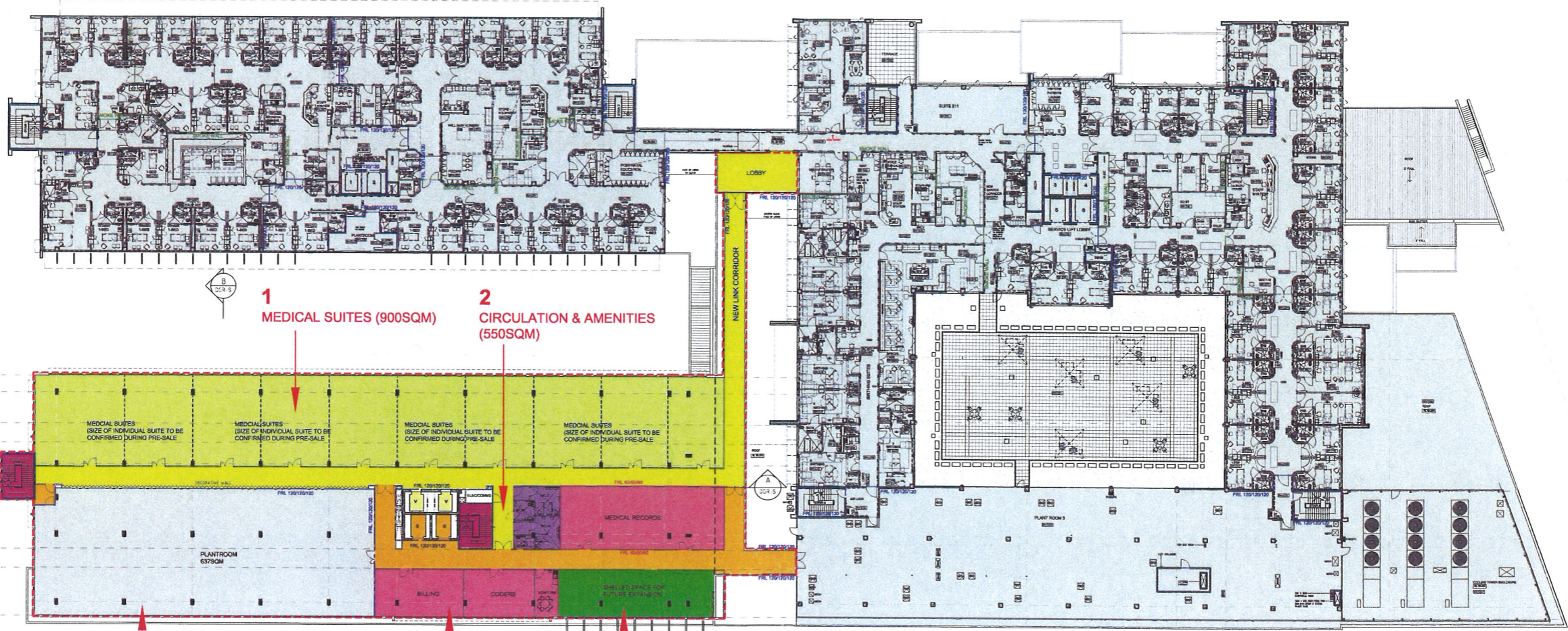
1
MEDICAL SUITES (900SQM)

2
CIRCULATION & AMENITIES (550SQM)

3
PLANT ROOM (615SQM)

4
CODER/MEDICAL RECORDS/
BILLING/ STAFF ROOM (277SQM)

5
SHELLED SPACE FOR FUTURE EXPANSION (106SQM)



EXISTING BOUNDARY

EXISTING BOUNDARY

LEGEND
 EXISTING CONDITION, NOT IN SCOPE

ISSUED FOR DGR SUBMISSION

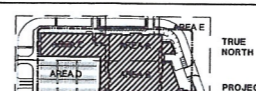
USE FIGURED DIMENSIONS ONLY. DO NOT SCALE. ALL DIMENSIONS SHALL BE VERIFIED ON SITE AND DISCREPANCIES IMMEDIATELY BROUGHT TO THE ATTENTION OF THE PROJECT MANAGER FOR RESOLUTION.

"CLOUDS" & REVISIONS ARE INTENDED AS GUIDES AND DO NOT NECESSARILY DESCRIBE THE FULL EXTENT OF REVISIONS. ASCERTAIN FULL EXTENT BY COMPARISON WITH PREVIOUS VERSION.

Subject	By	Date	Subject	By	Date	Subject	By	Date
RDS			STRUCT			PROJ ARCH		
ARCH			SPEC COND					
AUT			SERV					

REV	REVISION DESCRIPTION	DATE	BY
1	FIRST ISSUE	01/10/13	HS

REV	REVISION DESCRIPTION	DATE	BY



TRUE NORTH
PROJECT NORTH

Project
NORWEST PRIVATE HOSPITAL
Principal
HEALTHSCOPE LIMITED

Block/ Zone
A, B AND D
Drawing Title
NEW WING PROJECT
LEVEL 2 FLOOR PLAN (OVERALL)

HEALTH PROJECTS INTERNATIONAL
Architects and Health Facility Planners
CAD File
NWP12-P-2
Dwg No.
NWP12-DGR-2
Sheet
1

NSW GOVERNMENT
Planning

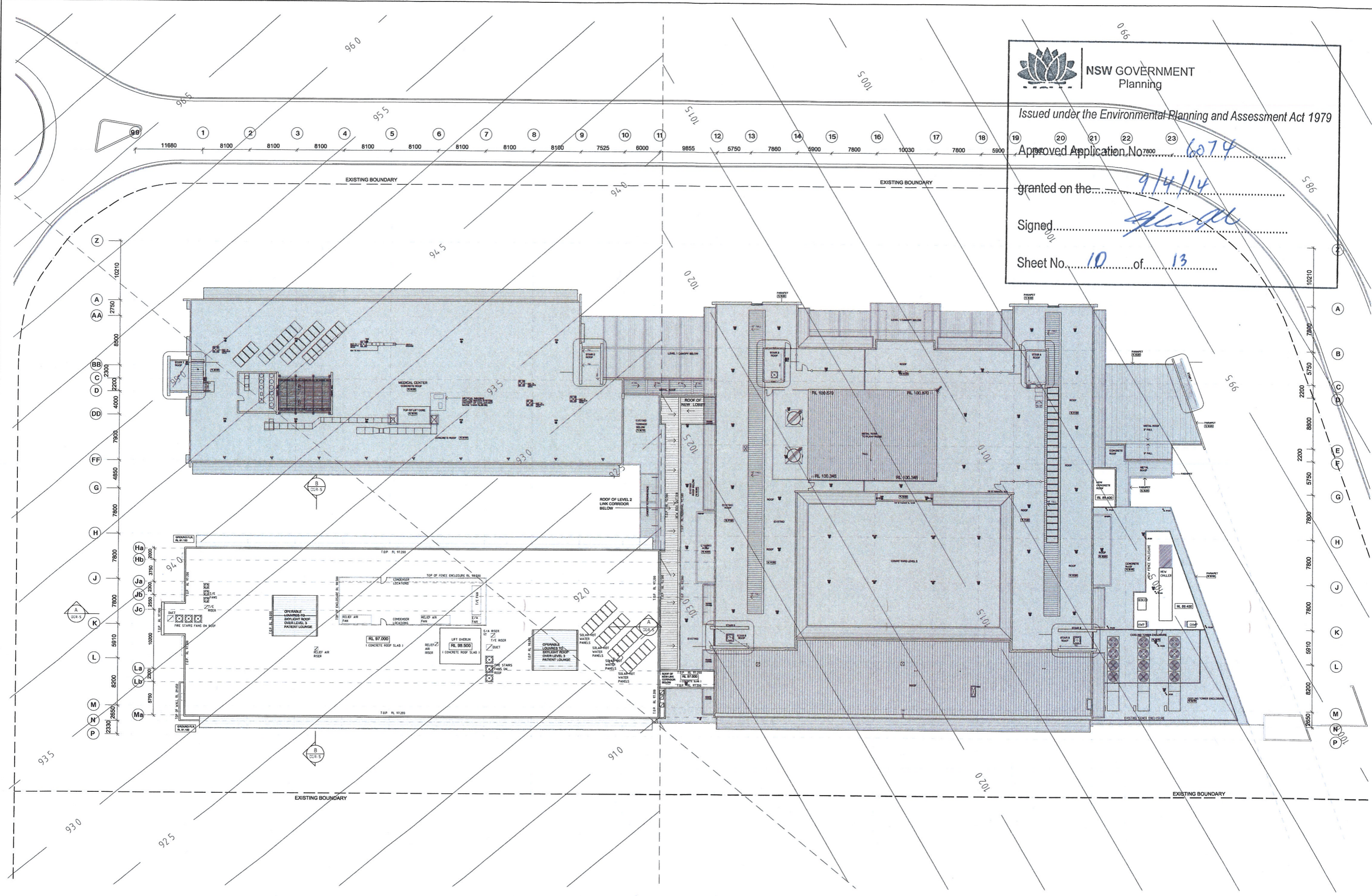
Issued under the Environmental Planning and Assessment Act 1979

Approved Application No. **6074**

granted on the **9/4/14**

Signed *[Signature]*

Sheet No. **10** of **13**



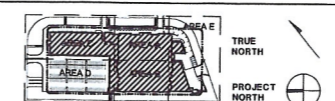
LEGEND
 EXISTING CONDITION, NOT IN SCOPE

ISSUED FOR DGR SUBMISSION

USE FIGURED DIMENSIONS ONLY. DO NOT SCALE.
 ALL DIMENSIONS SHALL BE VERIFIED ON SITE AND
 DISCREPANCIES IMMEDIATELY BROUGHT TO THE
 ATTENTION OF THE PROJECT MANAGER FOR
 RESOLUTION

"CLOUDS" & REVISIONS ARE INTENDED AS GUIDES
 AND DO NOT NECESSARILY DESCRIBE THE FULL
 EXTENT OF REVISIONS ASCERTAIN FULL EXTENT
 BY COMPARISON WITH PREVIOUS VERSION

Subject	By	Date	Subject	By	Date	Subject	By	Date	REV	REVISION DESCRIPTION	DATE	BY	REV	REVISION DESCRIPTION	DATE	BY
ROB			STRUCT			PRDJ	ARCH		1	FIRST ISSUE	01.11.13	HS				
AMH			SPEC	COVS												
ALT			SERV													



Project
**NORWEST
 PRIVATE HOSPITAL**

Block/ Zone
A, B AND D

Drawn
 HS

Checked
 AD

Date
 15.09.2013

Scale/s
 1:250

Project
HEALTHSCOPE LIMITED

Drawing Title
**NEW WING PROJECT
 LEVEL 4/ROOF PLAN (OVERALL)**

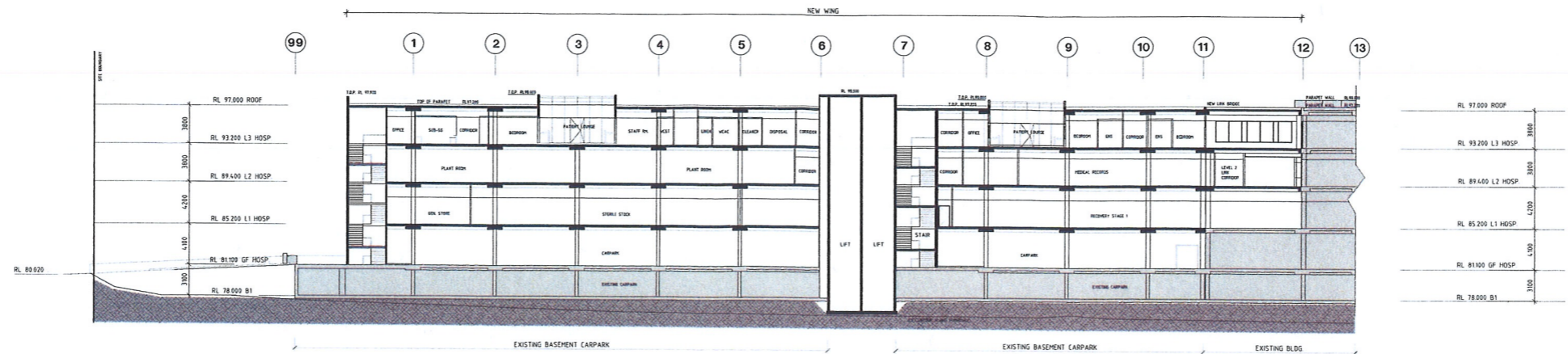
HEALTH PROJECTS INTERNATIONAL
 Architects and Health Facility Planners

ACN 099 899 895
 Ground Floor, Suite 100, Active Drive
 Mirrabooka Park, NSW 2201
 Ph: (02) 9882 4295

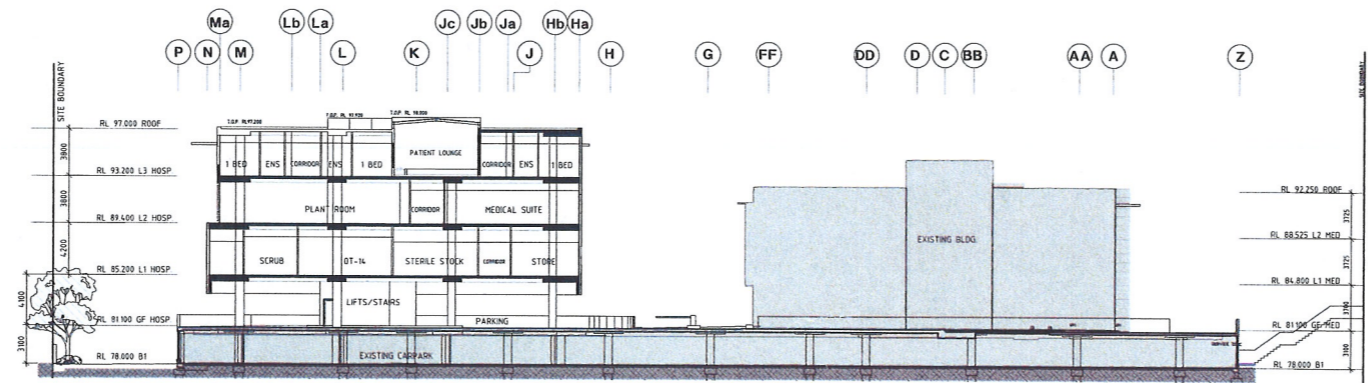
CAD File
 NWP12-P-4

Draw No.
NWP12-DGR-4


Sheet
1



SECTION A-A



SECTION B-B


NSW GOVERNMENT
 Planning

Issued under the Environmental Planning and Assessment Act 1979

Approved Application No.....6074.....

granted on the.....9/4/14.....

Signed.....*[Signature]*.....

Sheet No.....12..... of.....13.....

LEGEND
 EXISTING CONDITION, NOT IN SCOPE

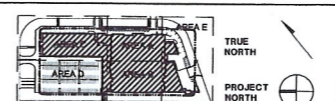
ISSUED FOR DGR SUBMISSION

USE FIGURED DIMENSIONS ONLY. DO NOT SCALE. ALL DIMENSIONS SHALL BE VERIFIED ON SITE AND DISCREPANCIES IMMEDIATELY BROUGHT TO THE ATTENTION OF THE PROJECT MANAGER FOR RESOLUTION.

"CLOUDS" & REVISIONS ARE INTENDED AS GUIDES AND DO NOT NECESSARILY DESCRIBE THE FULL EXTENT OF REVISIONS. ASCERTAIN FULL EXTENT BY COMPARISON WITH PREVIOUS VERSION.

QA CHECK


Subject	By	Date	Subject	By	Date	Subject	By	Date	REV	REVISION DESCRIPTION	DATE	BY	REV	REVISION DESCRIPTION	DATE	BY	REV	REVISION DESCRIPTION	DATE	BY
ARCH			STRUCT			PROJ ARCH			1	FIRST ISSUE	01/10/13	HS								



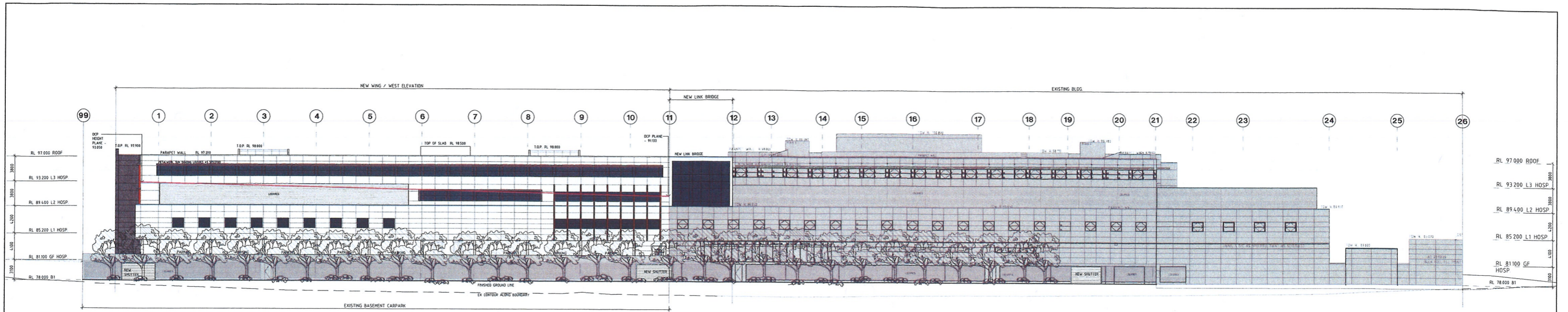
Project: **NORWEST PRIVATE HOSPITAL**
 Principal: **HEALTHSCOPE LIMITED**

Block/Zone	Drawn	Checked	Date	Scale
A, B AND D	HS	AD	15.09.2013	1:250

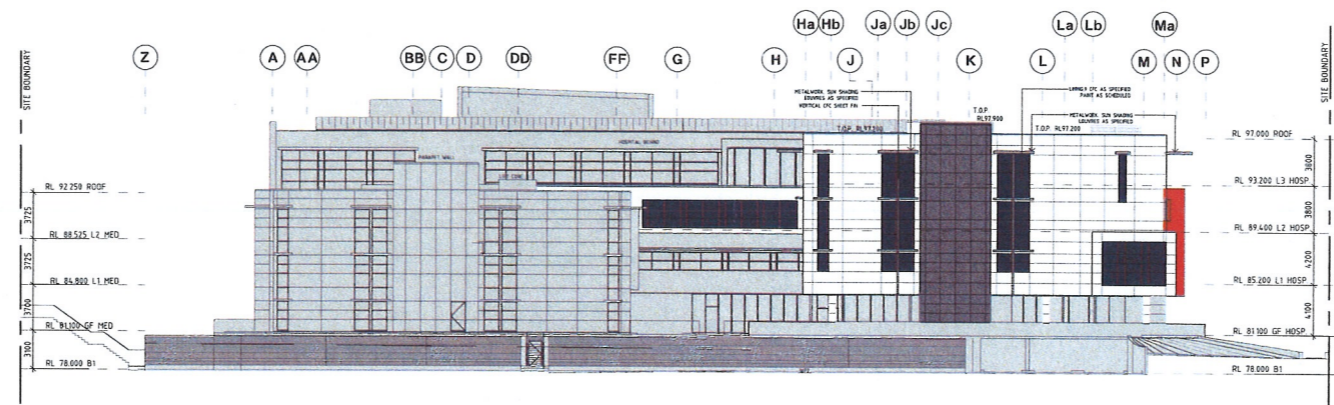
Drawing Title: **NEW WING PROJECT SECTIONS**


HEALTH PROJECTS INTERNATIONAL
 Architects and Health Facility Planners
 Ground Floor, Suite 1, 88 Alfred Street
 Milsons Point, NSW 2061
 Ph: (02) 9439 1188

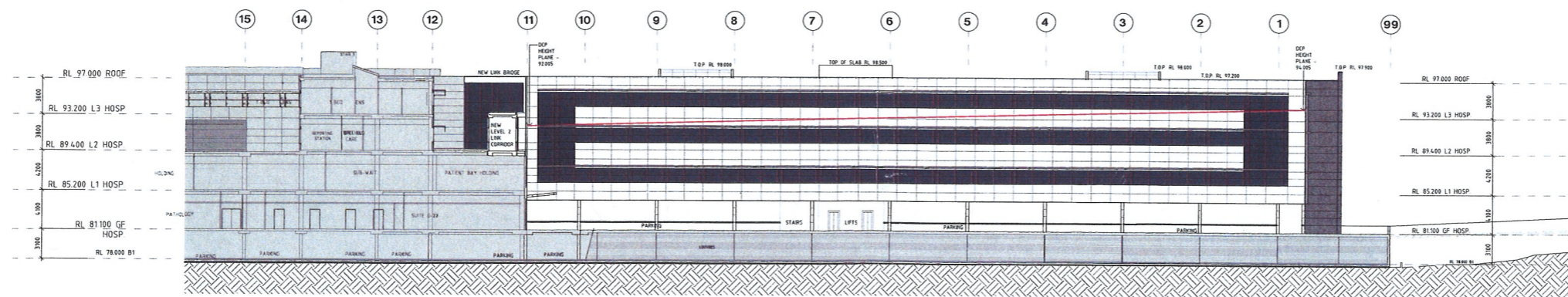
CAD File: **NWP12-E-1**
 Day No: **NWP12-DGR-S**
 Sheet: **1**



WEST ELEVATION



NORTH ELEVATION



EAST ELEVATION

NSW GOVERNMENT
Planning

Issued under the Environmental Planning and Assessment Act 1979

Approved Application No.....6074

granted on the.....9/4/14

Signed.....*[Signature]*

Sheet No.....12 of.....13

LEGEND
 EXISTING CONDITION, NOT IN SCOPE

ISSUED FOR DGR SUBMISSION

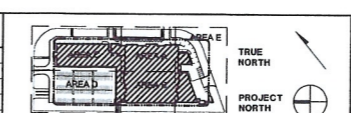
USE FIGURED DIMENSIONS ONLY DO NOT SCALE. ALL DIMENSIONS SHALL BE VERIFIED ON SITE AND DISCREPANCIES IMMEDIATELY BROUGHT TO THE ATTENTION OF THE PROJECT MANAGER FOR RESOLUTION

"CLOUDS" & REVISIONS ARE INTENDED AS GUIDES AND DO NOT NECESSARILY DESCRIBE THE FULL EXTENT OF REVISIONS ASCERTAIN FULL EXTENT BY COMPARISON WITH PREVIOUS VERSION

QA CHECK

Subject	By	Date	Subject	By	Date	Subject	By	Date
ARCH			STRUCT			PROJ ARCH		
ARCH			SPEC. COND					
AUT			SERV					

REV	REVISION DESCRIPTION	DATE	BY	REV	REVISION DESCRIPTION	DATE	BY	REV	REVISION DESCRIPTION	DATE	BY
1	FIRST ISSUE										



Project: **HORWEST PRIVATE HOSPITAL**

Principal: **HEALTHSCOPE LIMITED**

Block/Zone: **A, B AND D**

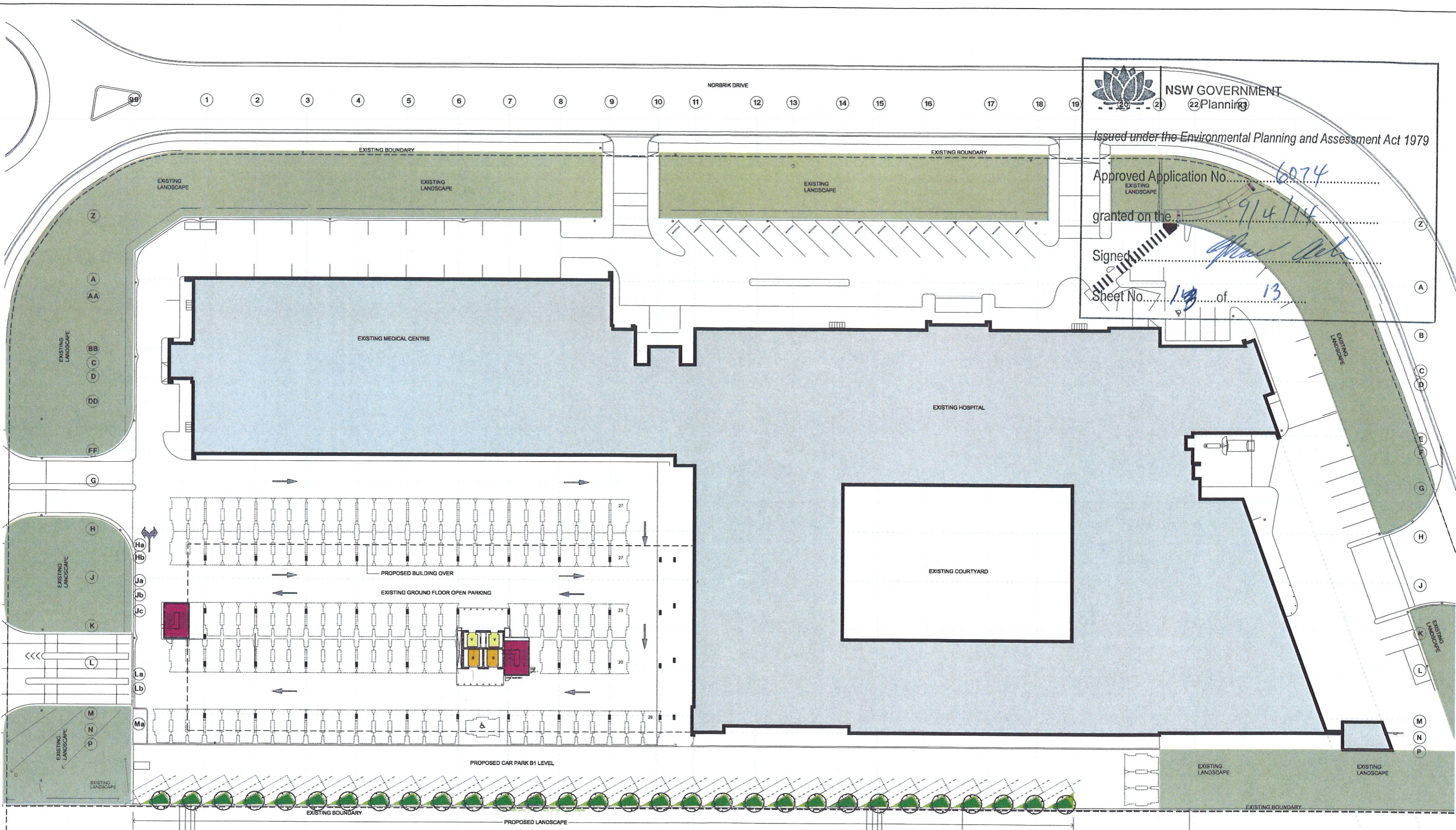
Drawing Title: **NEW WING PROJECT ELEVATIONS**

Drawn: HS
 Checked: ND
 Date: 15.09.2013
 Scale: A

HEALTH PROJECTS INTERNATIONAL
 Architects and Health Facility Planners

150 Oldfield Road, North Sydney, NSW 1585
 Ph: (02) 9439 1188 Fax: (02) 9439 4209

CAD File: NWP12-E-1
 Dwg No: **NWP12-DGR-E**

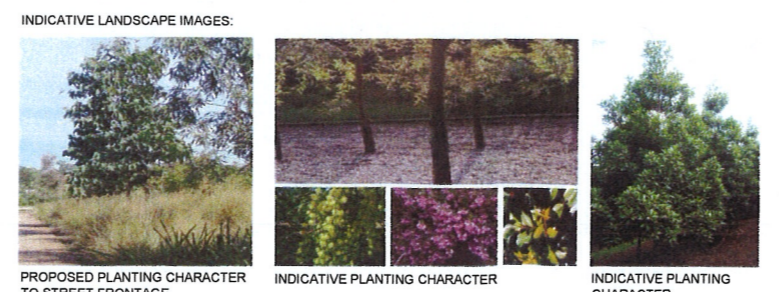


NSW GOVERNMENT
 22 Planning
 Issued under the Environmental Planning and Assessment Act 1979
 Approved Application No. 6074
 granted on the 9/4/14
 Signed: [Signature]
 Sheet No. 14 of 13

LEGEND:
 EXISTING LANDSCAPE
 TYPICAL PER BAY
 1 EL-RE
 10 CO-RE
 30 DI-SI
 20 GR-BR

PROPOSED LANDSCAPE PLANT SCHEDULE

ID	BOTANICAL NAME	COMMON NAME	SIZE AT MATURITY (M)	POT SIZE
TREES				
EL-RE	ELAEOCARPUS RETICULATUS	BLUEBERRY ASH	12	45L
SHURBS & SCREEN PLANTING				
CO-RE	CORREA REFLEXA	PINK CORREA	2	15L
GROUNDCOVERS				
DI-SI	DIANELLA 'SILVER STREAK'	FLAX LILY	400mm	150mm
GR-BR	GREVILLEA 'BRONZE RAMBLER'	GREVILLEA	200mm	150mm



TYPICAL PER BAY
 1 EL-RE
 10 CO-RE
 30 DI-SI
 20 GR-BR
 UNDER PLANTING DOWN EXTENT OF WESTERN BOUNDARY UNIFIES THE SPACE AND ADDS TO THE VISUAL AMENITY FROM THE HOSPITAL AND TO THE SITE

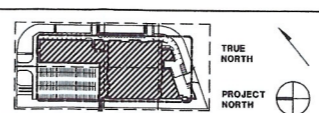
CLUSTERS OF GROVE PLANTING TO WESTERN BOUNDARY PROVIDES A SOFT VISUAL BREAKUP OF LANDSCAPE FROM THE HOSPITAL. HABITAT OPPORTUNITIES FROM LOCAL FAUNA AND VARIATION IN SIGHT LINES

USE FIGURED DIMENSIONS ONLY. DO NOT SCALE. ALL DIMENSIONS SHALL BE VERIFIED ON SITE AND DISCREPANCIES IMMEDIATELY BROUGHT TO THE ATTENTION OF THE PROJECT MANAGER FOR RESOLUTION.

"CLOUDS" & REVISIONS ARE INTENDED AS GUIDES AND DO NOT NECESSARILY DESCRIBE THE FULL EXTENT OF REVISIONS. ASCERTAIN FULL EXTENT BY COMPARISON WITH PREVIOUS VERSION.

QA CHECK

Subject	By	Date	Subject	By	Date	Subject	By	Date	REV	REVISION DESCRIPTION	DATE	BY	REV	REVISION DESCRIPTION	DATE	BY
ARCH			STRUCT			PROJ. ARCH			1	FIRST ISSUE	01/11/13	HS				
AUT			SERV													



Project: NORWEST PRIVATE HOSPITAL
 Principal: HEALTHSCOPE LIMITED
 Block/ Zone: A, B AND D
 Drawing Title: NEW WING PROJECT LANDSCAPE PLAN
 Drawn: HS
 Checked: AD
 Date: 13.09.2013
 Scale: 1:250

ISSUED FOR DGR SUBMISSION

HEALTH PROJECTS INTERNATIONAL
 Architects and Health Facility Planners
 400-080-888
 Ground Floor, Suite 1, 68 Alfred Street
 Melbourne, VIC 3001
 Ph: (03) 9460-4198 Fax: (03) 9460-4299

Dwg No. NWP12-DGR-L
 Issue 1