

**KEY**

- Narragamba Solar Project study area
- Stubbo Solar and Battery Project
- Major airport / aerodrome
- Power station
- Mine
- Observatory
- Operational renewable project
- Existing electricity transmission line
- Indicative Central-West Orana Renewable Energy Zone
- CWO-REZ Transmission Project study corridor (approximate)
- LGA boundaries
- National Parks and Reserves
- State Forest

Figure 1-1 | Regional context





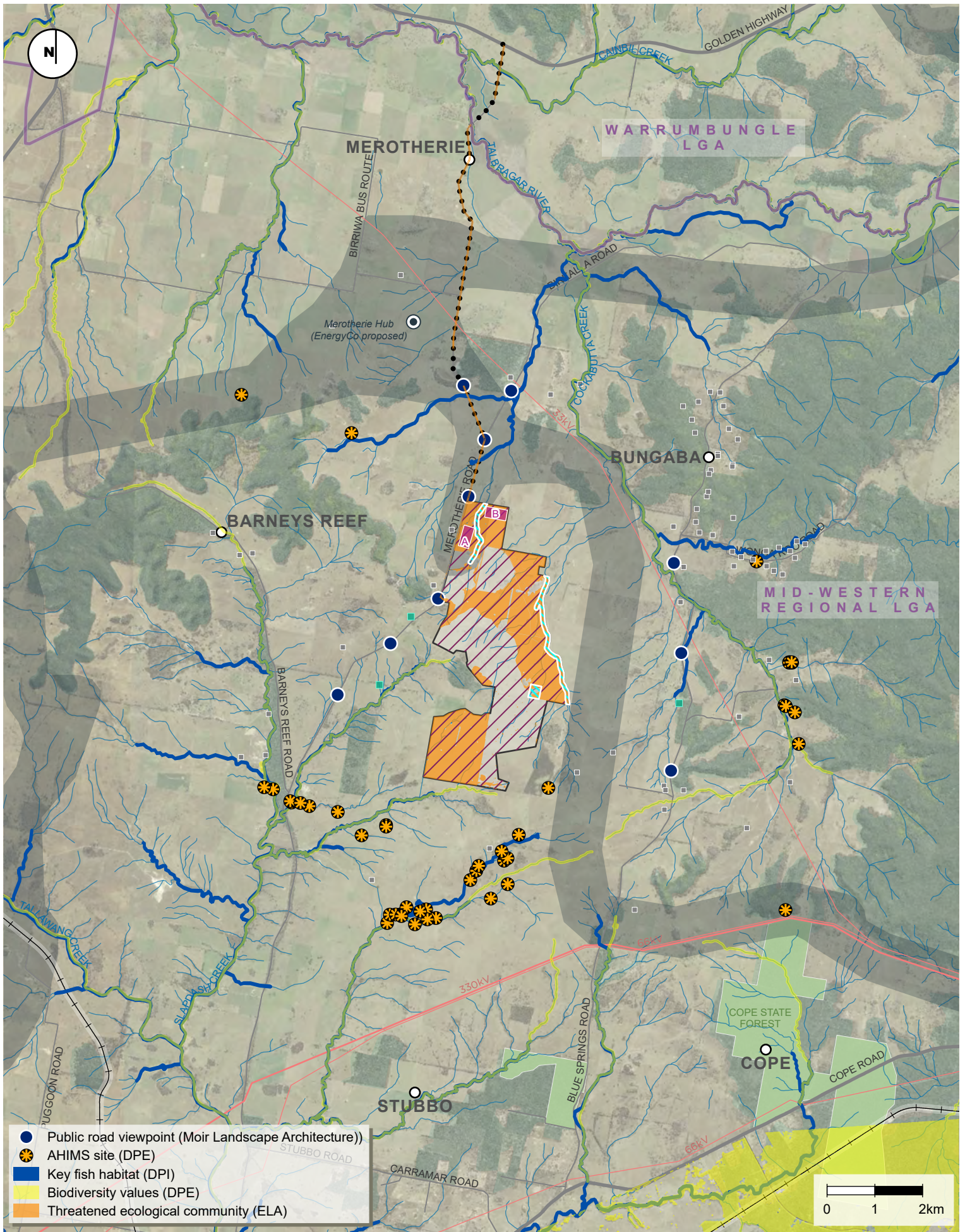
RAMBOLL AUSTRALIA - GIS MAP file : 318001722\_GIS\_P001\_ScopingReport | F002\_Locality\_V06  
 Aerial photography from NSW Government Spatial Services

**KEY**

- |   |                                 |          |                             |
|---|---------------------------------|----------|-----------------------------|
| Narragamba Solar Project study area                       | Dwelling status: Associated     | Road     | LGA boundary                |
| Existing electricity transmission line                    | Dwelling status: Not associated | Railway  | National Parks and Reserves |
| CWO-REZ Transmission Project study corridor (approximate) |                                 | Waterway | State forest                |

Figure 2-1 | Locality Plan





**KEY**

- |   |                                       |                 |          |                             |
|---|---------------------------------------|-----------------|----------|-----------------------------|
| Narragamba Solar Project study area                       | Indicative site access                | Dwelling status | Waterway | LGA boundary                |
| Existing electricity transmission line                    | Development footprint                 | Associated      | Railway  | National Parks and Reserves |
| CWO-REZ Transmission Project study corridor (approximate) | Restricted development area           | Not associated  |          | State forest                |
|   | Potential area of BESS and substation |                 |          |                             |

Figure 2-3 | Key site features

RAMBOLL AUSTRALIA - GIS MAP file : 318001722\_GIS\_P001\_ScopingReport | F026\_KeySiteFeat\_V07  
Aerial photography from NSW Government Spatial Services