

**SCHEDULE SECTION 96 CHANGES**

- A. FIRE PUMP ROOM HAS BEEN RELOCATED TO THE SOUTH WEST CORNER OF THE SITE
- B. THE FIRE SPRINKLER TANK WAS CHANGED FROM A SINGLE TANK TO DUAL 8.5M DIAMETER TANKS
- C. THE SINGLE 1000KVA SUBSTATION WAS INCREASED TO DUAL 1000 KVA SUBSTATIONS AND RELOCATED FROM GRIDS 29 TO 30 TO GRIDS 19 TO 21
- D. THE MAIN SWITCH ROOM (4.3M X 11.4M) WAS RELOCATED FROM AN INTERNAL LOCATION IN THE WAREHOUSE TO BETWEEN GRIDS 18 TO 20 ON THE LOCKWOOD ROAD BOUNDARY ADJACENT TO THE SUBSTATIONS
- E. THE GENERATOR WAS RELOCATED FROM GRID 30 TO 31 TO GRID 18 TO 19 NEXT TO THE MAIN SWITCH ROOM
- F. PARKING FOR 12 OFF 8T PUD TRUCKS WERE RELOCATED DUE TO THE REARRANGEMENT OF FIRE PUMP ROOM AND SPRINKLER TANKS FROM THE SOUTH WEST TO THE SOUTH EAST AND THE NORTH WEST OF THE SITE
- G. TRUCK WASH HAS INCREASED IN SIZE FROM (11M X 6M) TO (27.5MT X 8.5MT) AND HAS BEEN RELOCATED NORTH OF THE WAREHOUSE BETWEEN GRIDS 23 TO 26
- H. A PUMP ROOM (6.5M X 3M) HAS BEEN ADDED TO THE TRUCK WASH BETWEEN GRIDS 25 TO 26
- I. FULL HEIGHT SCREENING HAS BEEN ADDED TO THE NORTHERN SIDE OF THE TRUCK WASH PUMP ROOM
- J. PARKING FOR 5T PUD TRUCKS HAS BEEN REARRANGED AROUND THE NEW LOCATION OF THE TRUCKWASH, 3 OFF 5T PUD SPACES AND 8 OFF PRIME MOVER PARKING SPACES WERE MOVED WEST OF THE PROPOSED TRUCKWASH. THERE HAS BEEN NO CHANGE TO THE QUANTITY OF TRUCK PARKING SPACES IN THIS AREA
- K. TRUCK MAINTENANCE BUILDING HAS INCREASED IN SIZE FROM (11M X 6M) TO (25M X 18M) AND BEEN RELOCATED FROM GRIDS 2 TO 5 ON THE NORTH WEST OF THE SITE TO THE SOUTHWEST CORNER OF THE SITE
- L. WASTE STORAGE WAS RELOCATED FROM THE SOUTH WESTERN CORNER OF THE SITE TO THE NORTH-WEST OF THE WAREHOUSE BETWEEN GRIDS A TO C
- M. FUEL TANK HAS BEEN RELOCATED SOUTH BETWEEN GRIDS 21 TO 25 AND PARTIALLY COVERED BY TWO 4x17.6m AWNINGS
- N. FULL HEIGHT SCREENING TO THE FUEL TANK WAS ADDED TO THE SOUTHERN SIDE OF THE FUEL TANK BETWEEN GRIDS 21 TO 25
- O. THE DANGEROUS GOODS IN TRANSIT AREA HAS INCREASED IN SIZE FROM 125sqm TO 230sqm
- P. THE LPG BULLET AND AWNING (5x5m) WAS RELOCATED FROM GRIDS A TO B TO THE NORTH WEST OF THE WAREHOUSE BETWEEN GRIDS 14 TO 15, 4m HIGH CLAD WALL ADDED

© COMMERCIAL & INDUSTRIAL PROPERTY PTY LTD. THIS DRAWING IS COPYRIGHT. APART FROM PERMITTED DEALINGS UNDER THE COPYRIGHT ACT, THIS DRAWING MAY NOT BE REPRODUCED BY ANY PERSON WITHOUT PERMISSION IN WRITING. ALL AREAS AND DIMENSIONS SHOWN ON DRAWINGS ARE APPROXIMATE ONLY AND ARE SUBJECT TO CONFIRMATION BY SURVEY

**REVISIONS**

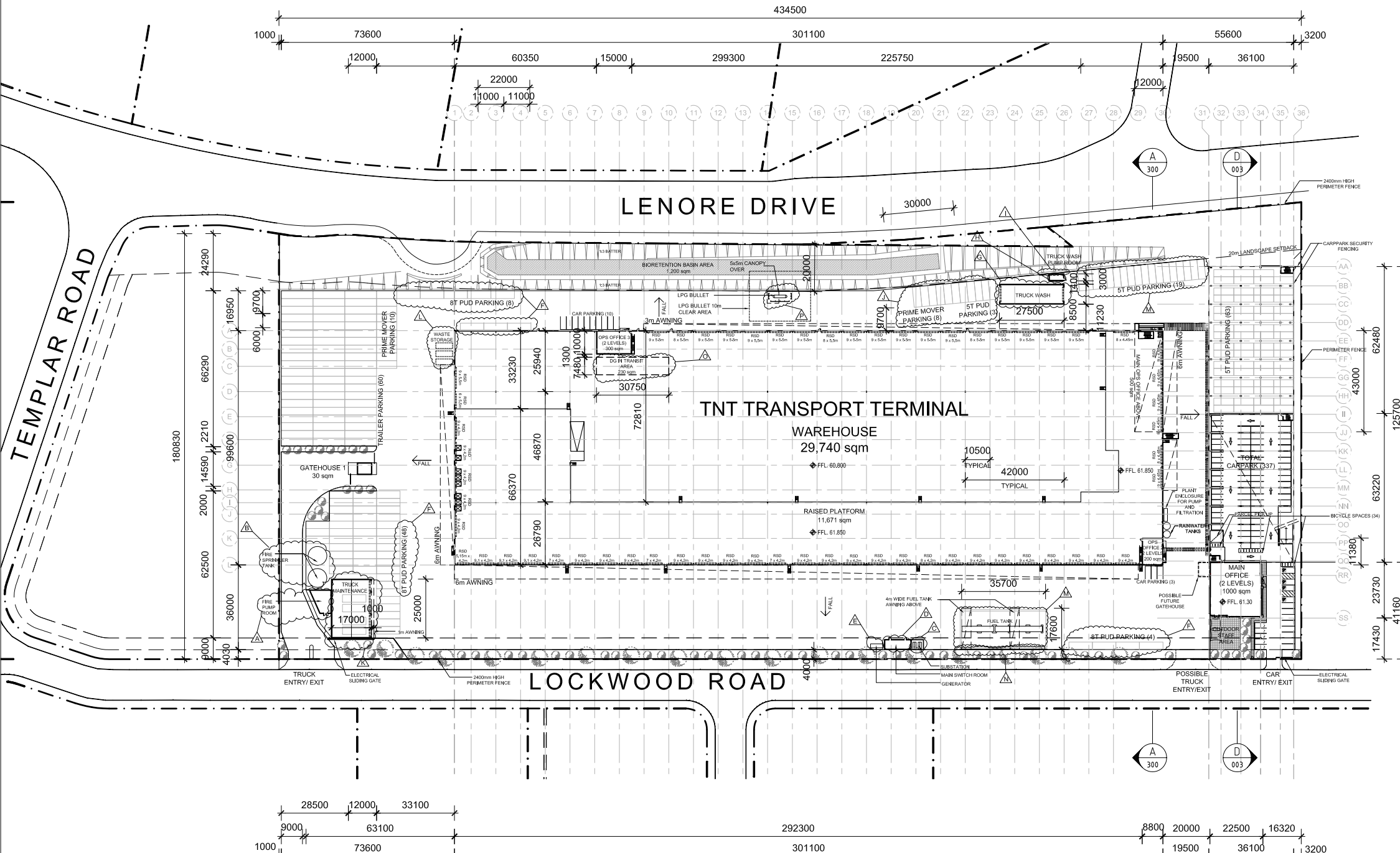
REVISIONS	DATE
A DEVELOPMENT APPLICATION	21.08.13
B EGRESS DOORS & SMALLER RSD ON NORTH WALL RELOCATED TO SUIT VERTICAL PRECAST PANELS	18.11.13
C RL LEVEL NOTATION ADDED RAISED PLATFORM HEIGHT CHANGE MEZZ OPS OFFICE RECONFIGURED RSD LOCATION & SIZE CHANGES ON SOUTH ELEV. FIRE EGRESS LOCATION CHANGES ON SOUTH ELEV. RSD REMOVED & FIRE STAIR ADDED ON WEST ELEV.	27.11.13
D SECTION 96	17.03.13
E SECTION 96	28.03.13

**SECTION 96 DEVELOPMENT SUMMARY**

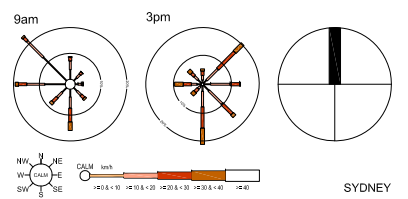
TOTAL SITE AREA	78,189 sqm
WAREHOUSE (INCLUDING RAISED DOCK 11,671 sqm)	29,740 sqm
MAIN OPS OFFICE 1 (MEZZANINE)	500 sqm
OPS OFFICE 2 (2 LEVELS)	200 sqm
OPS OFFICE 3 (2 LEVELS)	300 sqm
MAIN OFFICE (2 LEVELS)	1,000 sqm
GATEHOUSE	30 sqm
TRUCKWASH	234 sqm
TRUCKWASH PUMP ROOM	20 sqm
TRUCK MAINTENANCE	450 sqm
TOTAL BUILDING AREA	32,474 sqm
EFFICIENCY	41.5 %
AWNING (3m)	630 sqm
AWNING (6m)	2,658 sqm
FUEL TANK AWNING (4m)	141 sqm
LPG BULLET AWNING (5m)	25 sqm
CARPARK DECK- LEVEL 1	2,285 sqm
CARPARK DECK- LEVEL 2	4,538 sqm
TOTAL CARPARK DECK AREA	6,823 sqm
ACCESSIBLE CARPARKING- GF	4 spaces
CARPARKING PROVIDED- GF	87 spaces
CARPARKING PROVIDED- L1	74 spaces
CARPARKING PROVIDED- L2	172 spaces
CARPARKING- HARDSTAND	13 spaces
TOTAL CARPARK SPACES	350 spaces
BICYCLE SPACES	34 spaces
TRAILER PARKING (13.5m LONG)	60 spaces
PRIME MOVERS	18 spaces
5T PUDS	85 spaces
8T PUDS	60 spaces
OUTDOOR STAFF AREA	180 sqm
HEAVY DUTY PAVEMENT (H)	32,940 sqm
LIGHT DUTY PAVEMENT (L)	2,589 sqm

**DEVELOPMENT SUMMARY**

TOTAL SITE AREA	78,189 sqm
WAREHOUSE (INCLUDING RAISED DOCK 11,895 sqm)	29,740 sqm
MAIN OPS OFFICE 1 (MEZZANINE)	500 sqm
OPS OFFICE 2 (2 LEVELS)	200 sqm
OPS OFFICE 3 (2 LEVELS)	300 sqm
MAIN OFFICE (2 LEVELS)	1,000 sqm
GATEHOUSE	30 sqm
TRUCKWASH & MAINTENANCE BAY	132 sqm
TOTAL BUILDING AREA	31,902 sqm
EFFICIENCY	40.8 %
AWNING (3m)	630 sqm
AWNING (6m)	2,658 sqm
FUEL TANK AWNING (4m)	120 sqm
LPG BULLET AWNING (5m)	25 sqm
CARPARK DECK- LEVEL 1	2,285 sqm
CARPARK DECK- LEVEL 2	4,538 sqm
TOTAL CARPARK DECK AREA	6,823 sqm
ACCESSIBLE CARPARKING- GF	4 spaces
CARPARKING PROVIDED- GF	87 spaces
CARPARKING PROVIDED- L1	74 spaces
CARPARKING PROVIDED- L2	172 spaces
CARPARKING- HARDSTAND	13 spaces
TOTAL CARPARK SPACES	350 spaces
BICYCLE SPACES	24 spaces
TRAILER PARKING (13.5m LONG)	60 spaces
PRIME MOVERS	18 spaces
5T PUDS	85 spaces
8T PUDS	60 spaces
OUTDOOR STAFF AREA	180 sqm
HEAVY DUTY PAVEMENT (H)	32,940 sqm
LIGHT DUTY PAVEMENT (L)	2,589 sqm



CARPARKING REQUIRED (AS PER COUNCIL DCP)	
WAREHOUSE - 1 per 100 sqm	300 spaces
OFFICE - 1 per 40 sqm	50 spaces
TOTAL CARPARKING REQUIRED	350 spaces



Developing Relationships Building Success

Sydney | Melbourne | Brisbane | Adelaide | Perth  
www.ciproperty.com.au | National Enquiries: 1800 829 877

**TNT WAREHOUSE & DISTRIBUTION FACILITY**

LOT 201, DP 1133028  
LOCKWOOD RD, ERSKINE PARK NSW

DRAWING TITLE  
SITE PLAN- OVERALL

SCALE: 1:2000 @ A3

CREATE DATE: 13.03.2014 PLOT DATE: 28.03.2014

2-047-275903-S96- 002 E

**REVISIONS**

A	DEVELOPMENT APPLICATION	21.08.13
B	RL LEVEL NOTATION ADDED	27.11.13
C	SECTION 96	17.03.14

**SCHEDULE SECTION 96 CHANGES**

- F. AN ADDITIONAL 10 BIKE RACKS BETWEEN GRIDS 35 TO 36 WERE ADDED NEXT TO THE MAIN OFFICE NEXT TO DISABLED CAR SPACE

**SECTION 96 PARKING SCHEDULE**

**CAR PARKING NUMBERS**

ACCESSIBLE CARS- GROUND FLOOR	4 spaces
CARS- GROUND FLOOR	87 spaces
CARS- LEVEL 1	74 spaces
CARS- LEVEL 2	172 spaces
<b>TOTAL CAR SPACES</b>	<b>337 spaces</b>

TOTAL STANDARD CAR SPACES	250 spaces
TOTAL SMALL CAR SPACES	87 spaces
TOTAL BICYCLE SPACES	34 spaces

**DA APPROVED PARKING SCHEDULE**

**CAR PARKING NUMBERS**

ACCESSIBLE CARS- GROUND FLOOR	4 spaces
CARS- GROUND FLOOR	87 spaces
CARS- LEVEL 1	74 spaces
CARS- LEVEL 2	172 spaces
<b>TOTAL CAR SPACES</b>	<b>337 spaces</b>

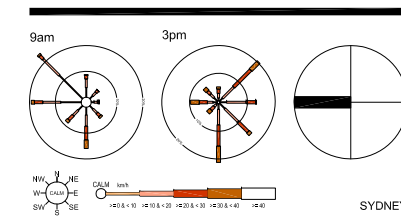
TOTAL STANDARD CAR SPACES	250 spaces
TOTAL SMALL CAR SPACES	87 spaces
TOTAL BICYCLE SPACES	24 spaces

**A CARPARK PLAN-LEVEL 2**  
003 Scale 1:1000

**B CARPARK PLAN-LEVEL 1**  
003 Scale 1:1000

**C CARPARK PLAN- GROUND FLOOR**  
003 Scale 1:1000

**D CARPARK SECTION**  
003 Scale 1:1000



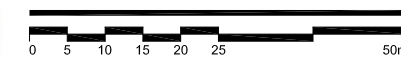
Developing Relationships Building Success

Sydney | Melbourne | Brisbane | Adelaide | Perth  
www.ciproperty.com.au | National Enquiries: 1800 829 877

**TNT WAREHOUSE & DISTRIBUTION FACILITY**

LOT 201, DP 1133028  
LOCKWOOD RD, ERSKINE PARK NSW

DRAWING TITLE  
**FLOOR PLANS- CARPARK**



SCALE: 1:1000 @ A3

CREATE DATE: 13.03.2014

PLOT DATE: 17.03.2014



2-047-275903-S96- 003

C

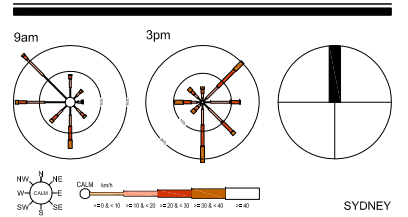
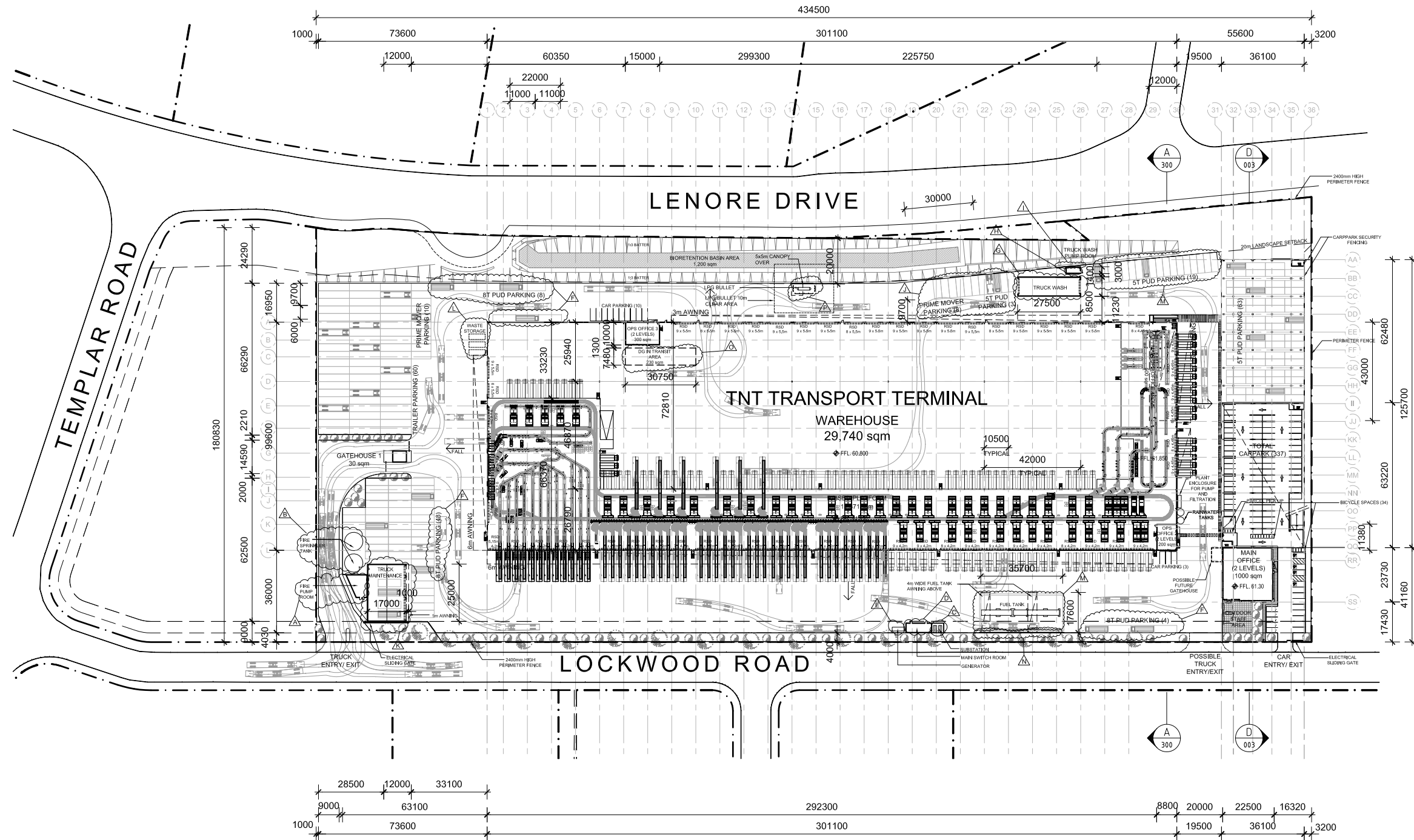
**SCHEDULE SECTION 96 CHANGES**

- A. FIRE PUMP ROOM HAS BEEN RELOCATED TO THE SOUTH WEST CORNER OF THE SITE
- B. THE FIRE SPRINKLER TANK WAS CHANGED FROM A SINGLE TANK TO DUAL 8.5M DIAMETER TANKS
- C. THE SINGLE 1000KVA SUBSTATION WAS INCREASED TO DUAL 1000 KVA SUBSTATIONS AND RELOCATED FROM GRIDS 29 TO 30 TO GRIDS 19 TO 21
- D. THE MAIN SWITCH ROOM (4.3M X 11.4M) WAS RELOCATED FROM AN INTERNAL LOCATION IN THE WAREHOUSE TO BETWEEN GRIDS 18 TO 20 ON THE LOCKWOOD ROAD BOUNDARY ADJACENT TO THE SUBSTATIONS
- E. THE GENERATOR WAS RELOCATED FROM GRID 30 TO 31 TO GRID 18 TO 19 NEXT TO THE MAIN SWITCH ROOM
- F. PARKING FOR 12 OFF 8T PUD TRUCKS WERE RELOCATED DUE TO THE REARRANGEMENT OF FIRE PUMP ROOM AND SPRINKLER TANKS FROM THE SOUTH WEST TO THE SOUTH EAST AND THE NORTH WEST OF THE SITE
- G. TRUCK WASH HAS INCREASED IN SIZE FROM (11M X 6M) TO (27.5MT X 8.5MT) AND HAS BEEN RELOCATED NORTH OF THE WAREHOUSE BETWEEN GRIDS 23 TO 28
- H. A PUMP ROOM (6.5M X 3M) HAS BEEN ADDED TO THE TRUCK WASH BETWEEN GRIDS 25 TO 26
- I. FULL HEIGHT SCREENING HAS BEEN ADDED TO THE NORTHERN SIDE OF THE TRUCK WASH PUMP ROOM
- J. PARKING FOR 5T PUD TRUCKS HAS BEEN REARRANGED AROUND THE NEW LOCATION OF THE TRUCKWASH. 3 OFF 5T PUD SPACES AND 8 OFF PRIME MOVER PARKING SPACES WERE MOVED WEST OF THE PROPOSED TRUCKWASH. THERE HAS BEEN NO CHANGE TO THE QUANTITY OF TRUCK PARKING SPACES IN THIS AREA
- K. TRUCK MAINTENANCE BUILDING HAS INCREASED IN SIZE FROM (11M X 6M) TO (25M X 18M) AND BEEN RELOCATED FROM GRIDS 2 TO 5 ON THE NORTH WEST OF THE SITE TO THE SOUTHWEST CORNER OF THE SITE
- L. WASTE STORAGE WAS RELOCATED FROM THE SOUTH WESTERN CORNER OF THE SITE TO THE NORTH-WEST OF THE WAREHOUSE BETWEEN GRIDS A TO C
- M. FUEL TANK HAS BEEN RELOCATED SOUTH BETWEEN GRIDS 21 TO 25 AND PARTIALLY COVERED BY TWO 4x17.6m AWNINGS
- N. FULL HEIGHT SCREENING TO THE FUEL TANK WAS ADDED TO THE SOUTHERN SIDE OF THE FUEL TANK BETWEEN GRIDS 21 TO 25
- O. THE DANGEROUS GOODS IN TRANSIT AREA HAS INCREASED IN SIZE FROM 125sqm TO 230sqm
- P. THE LPG BULLET AND AWNING (5x5m) WAS RELOCATED FROM GRIDS A TO B TO THE NORTH WEST OF THE WAREHOUSE BETWEEN GRIDS 14 TO 15. 4m HIGH CLAD WALL ADDED

© COMMERCIAL & INDUSTRIAL PROPERTY PTY LTD. THIS DRAWING IS COPYRIGHT. APART FROM PERMITTED DEALINGS UNDER THE COPYRIGHT ACT, THIS DRAWING MAY NOT BE REPRODUCED BY ANY PERSON WITHOUT PERMISSION IN WRITING. ALL AREAS AND DIMENSIONS SHOWN ON DRAWINGS ARE APPROXIMATE ONLY AND ARE SUBJECT TO CONFIRMATION BY SURVEY

**REVISIONS**

REVISIONS	DATE
A DEVELOPMENT APPLICATION	21.08.13
B SORTATION LAYOUT UPDATED	27.11.13
C SECTION 96	17.03.14
D SECTION 96	28.03.14



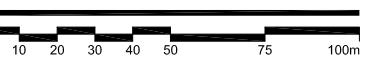
Developing Relationships | Building Success

Sydney | Melbourne | Brisbane | Adelaide | Perth  
www.ciproperty.com.au | National Enquiries: 1800 829 877

**PROJECT**  
**TNT WAREHOUSE & DISTRIBUTION FACILITY**

LOT 201, DP 1133028  
LOCKWOOD RD, ERSKINE PARK NSW

DRAWING TITLE  
**SITE PLAN- INDICATIVE SORTATION EQUIPMENT LAYOUT**



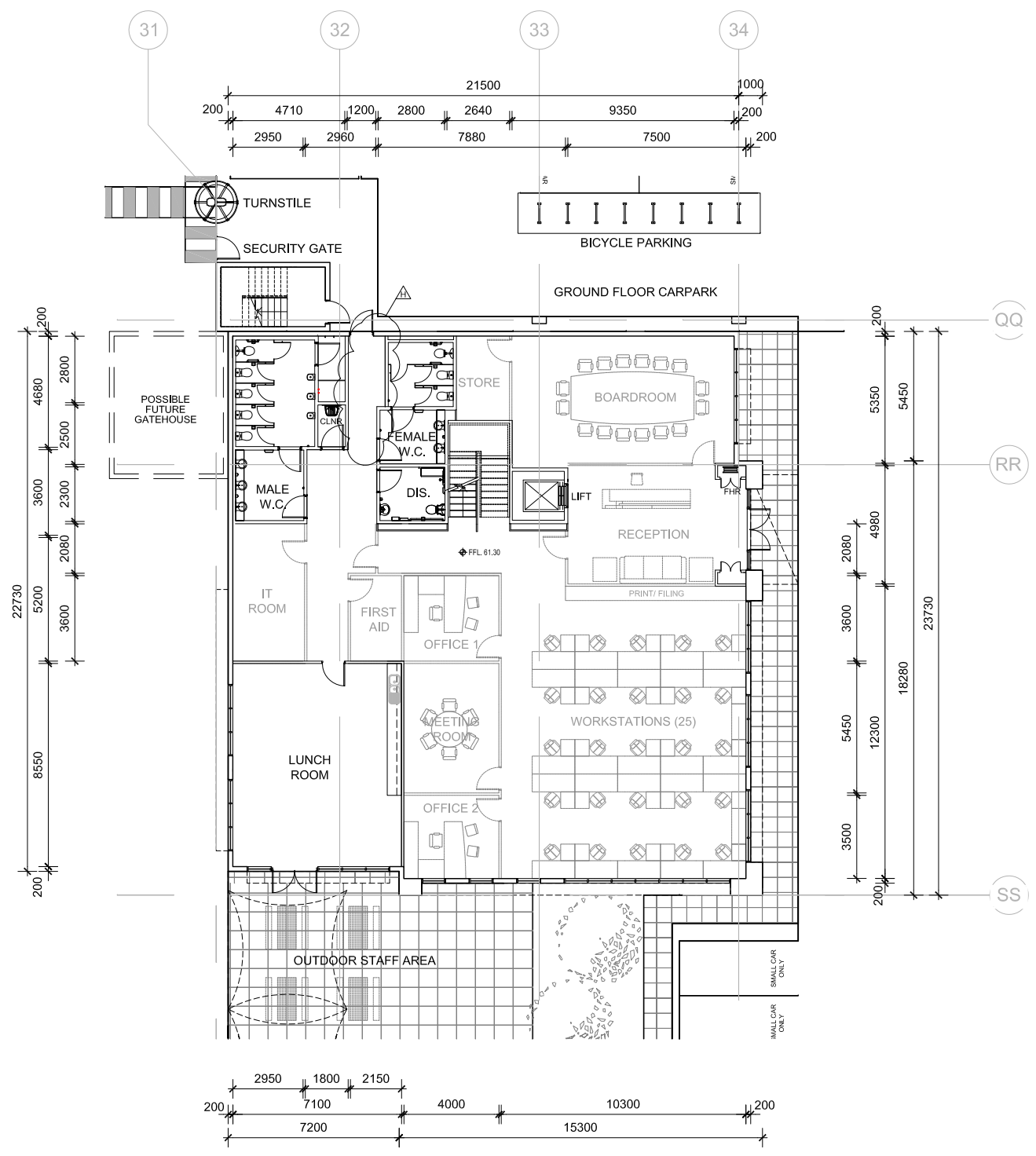
SCALE: 1:2000 @ A3

CREATE DATE: 13.03.2014 PLOT DATE: 28.03.2014

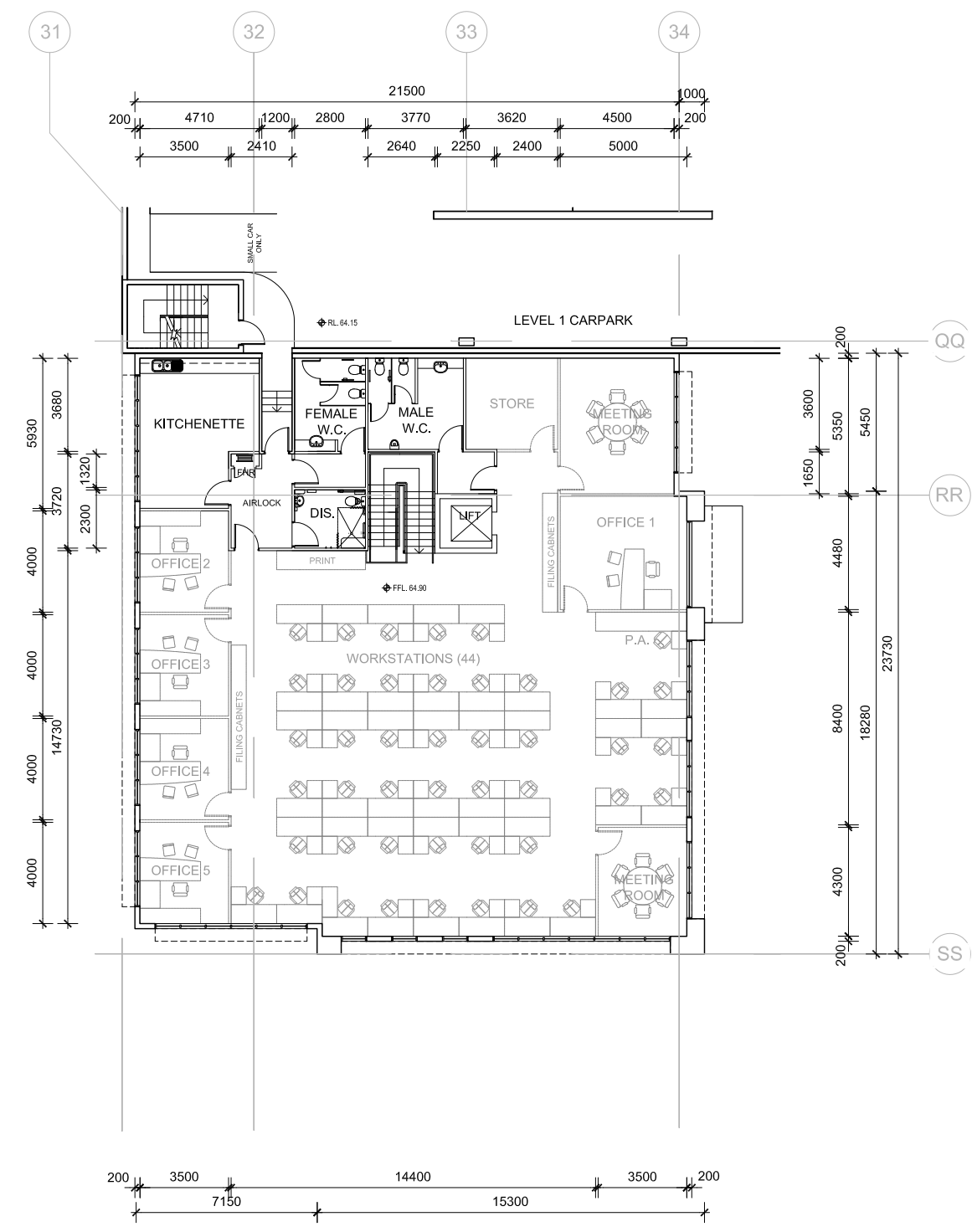
2-047-275903-S96- 004 **D**



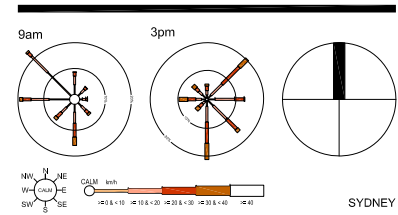
REVISIONS	
A	DEVELOPMENT APPLICATION 21.08.13
B	RL LEVEL NOTATION ADDED 27.11.13
C	SECTION 96 17.03.14



**A** MAIN OFFICE- GROUND FLOOR  
110 Scale 1:250



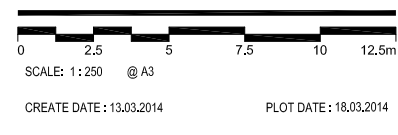
**B** MAIN OFFICE- FIRST FLOOR  
110 Scale 1:250



**CIP**  
Developing Relationships Building Success  
Sydney | Melbourne | Brisbane | Adelaide | Perth  
www.ciproperty.com.au | National Enquiries: 1800 829 877

PROJECT  
**TNT WAREHOUSE & DISTRIBUTION FACILITY**  
LOT 201, DP 1133028  
LOCKWOOD RD, ERSKINE PARK NSW

DRAWING TITLE  
**FLOOR PLANS- MAIN OFFICE**



2-047-275903-S96- 110 **C**

**SCHEDULE SECTION 96 CHANGES**

- H. MAIN OFFICE REAR ENTRY CORRIDOR HAS INCREASED IN WIDTH FROM 1300 TO 1550MM TO COMPLY WITH DDA REQUIREMENTS



**SCHEDULE SECTION 96 CHANGES**

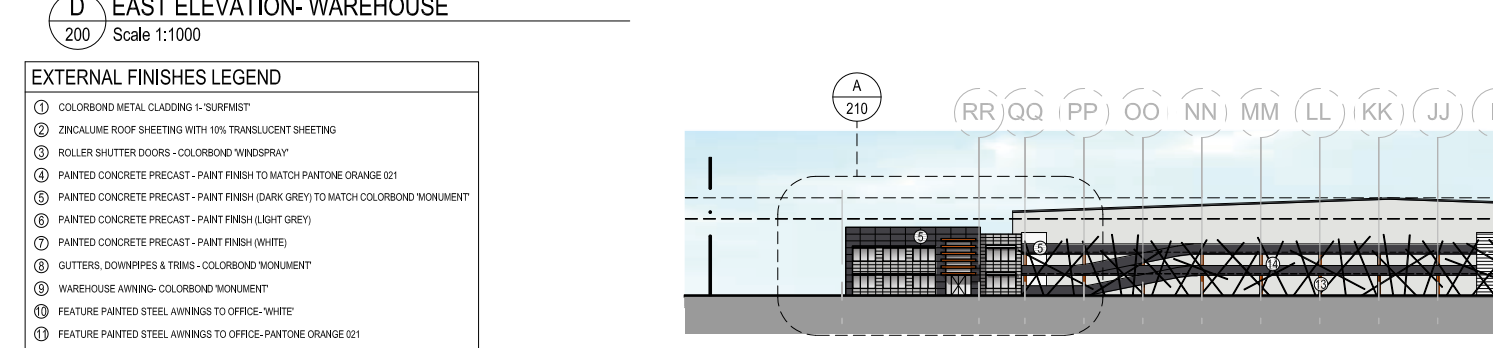
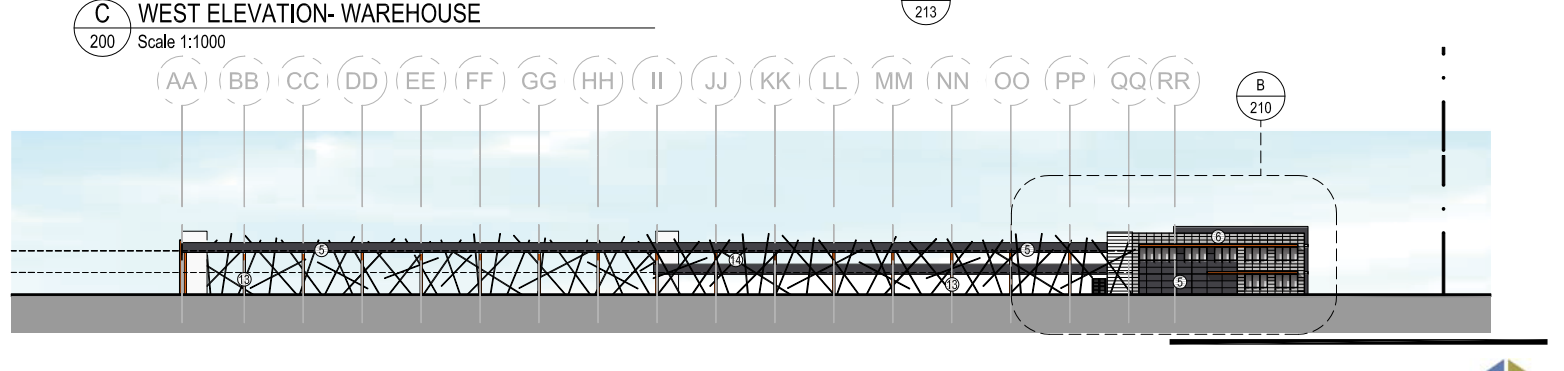
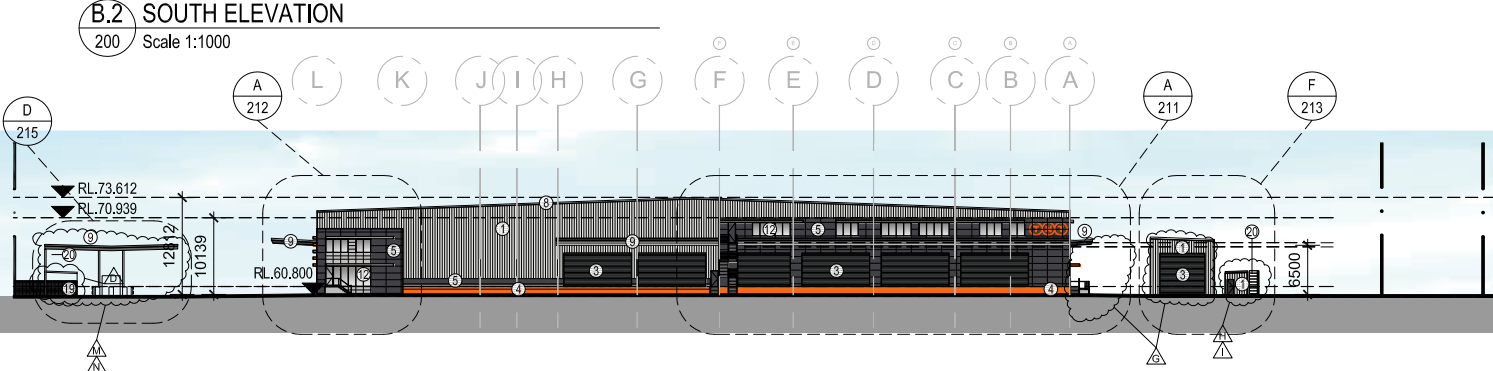
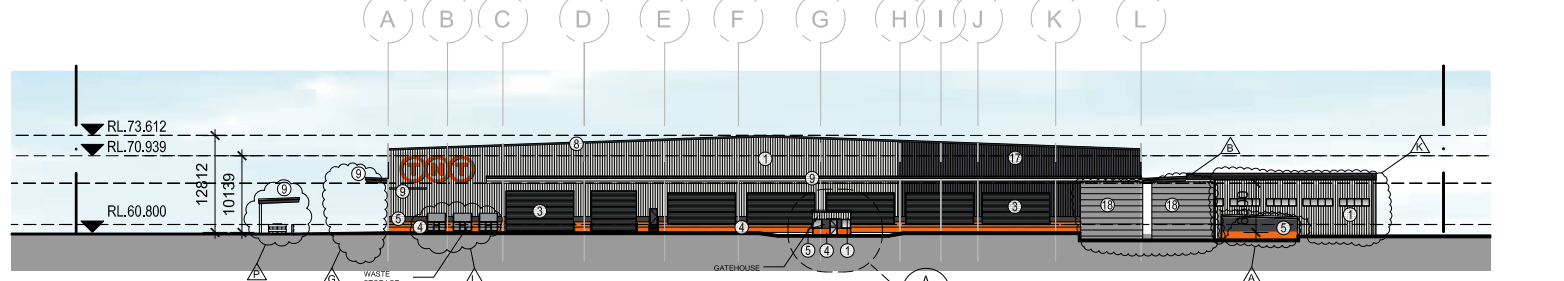
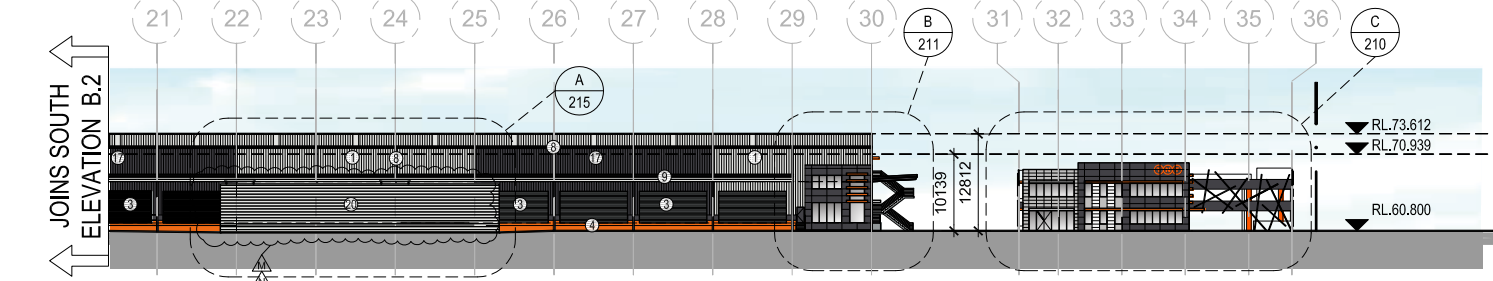
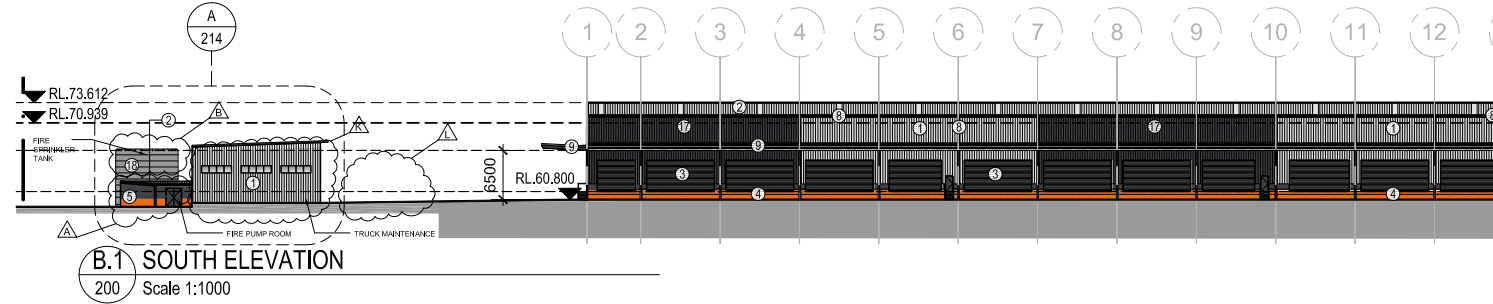
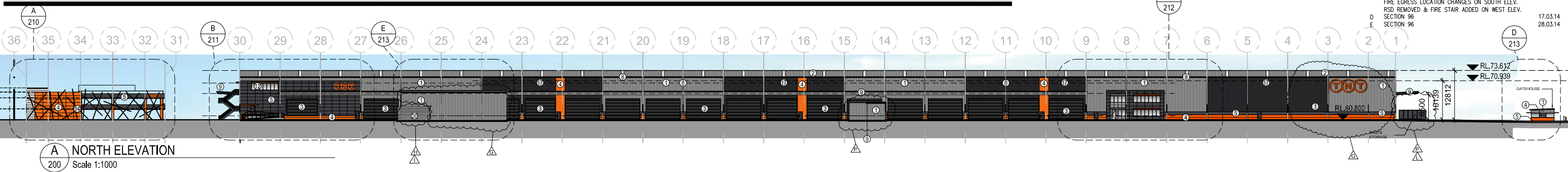
- A. FIRE PUMP ROOM HAS BEEN RELOCATED TO THE SOUTH WEST CORNER OF THE SITE
- B. THE FIRE SPRINKLER TANK WAS CHANGED FROM A SINGLE TANK TO DUAL 8.5M DIAMETER TANKS
- C. THE SINGLE 1000KVA SUBSTATION WAS INCREASED TO DUAL 1000 KVA SUBSTATIONS AND RELOCATED FROM GRIDS 29 TO 30 TO GRIDS 21 TO 22
- D. THE MAIN SWITCH ROOM (4.3M X 11.4M) WAS RELOCATED FROM AN INTERNAL LOCATION IN THE WAREHOUSE TO BETWEEN GRIDS 18 TO 20 ON THE LOCKWOOD ROAD BOUNDARY ADJACENT TO THE SUBSTATIONS
- E. THE GENERATOR WAS RELOCATED FROM GRID 30 TO 31 TO GRID 18 TO 19 NEXT TO THE MAIN SWITCH ROOM
- G. TRUCK WASH HAS INCREASED IN SIZE FROM (11M X 6M) TO (27.5M X 8.8MT) AND HAS BEEN RELOCATED NORTH OF THE WAREHOUSE BETWEEN GRIDS 23 TO 26

- H. A PUMP ROOM (6.5M X 3M) HAS BEEN ADDED TO THE TRUCK WASH BETWEEN GRIDS 25 TO 26
- I. FULL HEIGHT SCREENING HAS BEEN ADDED TO THE NORTHERN SIDE OF THE TRUCK WASH PUMP ROOM
- K. TRUCK MAINTENANCE BUILDING HAS INCREASED IN SIZE FROM (11M X 6M) TO (25M X 18M) AND BEEN RELOCATED FROM GRIDS 2 TO 5 ON THE NORTH WEST OF THE SITE TO THE SOUTHWEST CORNER OF THE SITE
- L. WASTE STORAGE WAS RELOCATED FROM THE SOUTH WESTERN CORNER OF THE SITE TO THE NORTH-WEST OF THE WAREHOUSE BETWEEN GRIDS A TO C
- M. FUEL TANK HAS BEEN RELOCATED SOUTH BETWEEN GRIDS 21 TO 25 AND PARTIALLY COVERED BY TWO 4x17.6m AWNINGS
- N. FULL HEIGHT SCREENING TO THE FUEL TANK WAS ADDED TO THE SOUTHERN SIDE OF THE FUEL TANK BETWEEN GRIDS 21 TO 25
- P. THE LPG BULLET AND AWNING (5x5m) WAS RELOCATED FROM GRIDS A TO B TO THE NORTH WEST OF THE WAREHOUSE BETWEEN GRIDS 14 TO 15, 4m HIGH CLAD WALL ADDED

© COMMERCIAL & INDUSTRIAL PROPERTY PTY LTD. THIS DRAWING IS COPYRIGHT. APART FROM PERMITTED DEALINGS UNDER THE COPYRIGHT ACT, THIS DRAWING MAY NOT BE REPRODUCED BY ANY PERSON WITHOUT PERMISSION IN WRITING. ALL AREAS AND DIMENSIONS SHOWN ON DRAWINGS ARE APPROXIMATE ONLY AND ARE SUBJECT TO CONFIRMATION BY SURVEY

**REVISIONS**

A	DEVELOPMENT APPLICATION	21.08.13
B	ORANGE PRECAST PANELS ADDED ALONG NORTHERN ELEVATION	18.11.13
C	WAREHOUSE RIDGE & SPRING HEIGHT REDUCED WAREHOUSE FFL NOTATION ADDED RSD LOCATION & SIZE CHANGES ON SOUTH ELEV. FIRE EGRESS LOCATION CHANGES ON SOUTH ELEV. RSD REMOVED & FIRE STAIR ADDED ON WEST ELEV.	27.11.13
D	SECTION 96	17.03.14
E	SECTION 96	28.03.14



**EXTERNAL FINISHES LEGEND**

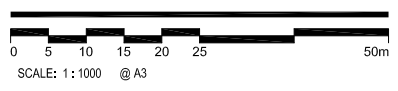
- ① COLORBOND METAL CLADDING 1- 'SURFMIST'
- ② ZINCALUME ROOF SHEETING WITH 10% TRANSLUCENT SHEETING
- ③ ROLLER SHUTTER DOORS - COLORBOND 'WINDSPRAY'
- ④ PAINTED CONCRETE PRECAST - PAINT FINISH TO MATCH PANTONE ORANGE 021
- ⑤ PAINTED CONCRETE PRECAST - PAINT FINISH (DARK GREY) TO MATCH COLORBOND 'MONUMENT'
- ⑥ PAINTED CONCRETE PRECAST - PAINT FINISH (LIGHT GREY)
- ⑦ PAINTED CONCRETE PRECAST - PAINT FINISH (WHITE)
- ⑧ GUTTERS, DOWNPIPES & TRIMS - COLORBOND 'MONUMENT'
- ⑨ WAREHOUSE AWNING- COLORBOND 'MONUMENT'
- ⑩ FEATURE PAINTED STEEL AWNINGS TO OFFICE- 'WHITE'
- ⑪ FEATURE PAINTED STEEL AWNINGS TO OFFICE- PANTONE ORANGE 021
- ⑫ SELECTED GLAZING TO COMPLY WITH SECTION J OF BCA
- ⑬ PAINTED CONCRETE COLUMNS TO CARPARK- PANTONE ORANGE 021
- ⑭ CARPARK FEATURE ELEMENT- PAINTED ALUMINIUM
- ⑮ ALUCOBOND CLADDING OR SIMILAR- DARK GREY
- ⑯ ALUCOBOND LOUVERS- 'WHITE'
- ⑰ COLORBOND METAL CLADDING 1- 'MONUMENT'
- ⑱ POLYETHYLENE FIRE SPRINKLER TANK - GRAY
- ⑲ CHAIN WIRE PERIMETER MESH
- ⑳ ALUMINIUM PLANK SCREEN

\* IF WAREHOUSE FLOOR LEVEL VARIES +/-200mm, EACH RL WILL CHANGE ACCORDINGLY

**CIP**  
Developing Relationships Building Success  
Sydney | Melbourne | Brisbane | Adelaide | Perth  
www.ciproperty.com.au | National Enquiries: 1800 829 877

PROJECT  
**TNT WAREHOUSE & DISTRIBUTION FACILITY**  
LOT 201, DP 1133028  
LOCKWOOD RD, ERSKINE PARK NSW

DRAWING TITLE  
**ELEVATIONS- OVERALL**



CREATE DATE : 13.03.2014 PLOT DATE : 28.03.2014

2-047-275903-S96- 200 **E**



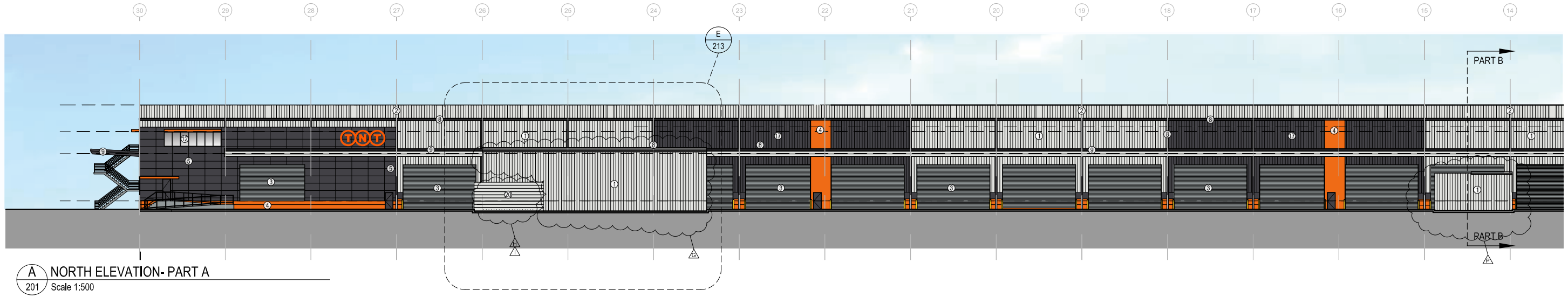
**SCHEDULE SECTION 96 CHANGES**

- G. TRUCK WASH HAS INCREASED IN SIZE FROM (11M X 6M) TO (27.5MT X 8.5MT) AND HAS BEEN RELOCATED NORTH OF THE WAREHOUSE BETWEEN GRIDS 23 TO 26
- H. A PUMP ROOM (6.5M X 3M) HAS BEEN ADDED TO THE TRUCK WASH BETWEEN GRIDS 25 TO 26
- I. FULL HEIGHT SCREENING HAS BEEN ADDED TO THE NORTHERN SIDE OF THE TRUCK WASH PUMP ROOM
- L. WASTE STORAGE WAS RELOCATED FROM THE SOUTH WESTERN CORNER OF THE SITE TO THE NORTH-WEST OF THE WAREHOUSE BETWEEN GRIDS A TO C
- P. THE LPG BULLET AND AWNING (5x5m) WAS RELOCATED FROM GRIDS A TO B TO THE NORTH WEST OF THE WAREHOUSE BETWEEN GRIDS 14 TO 15, 4m HIGH CLAD WALL ADDED

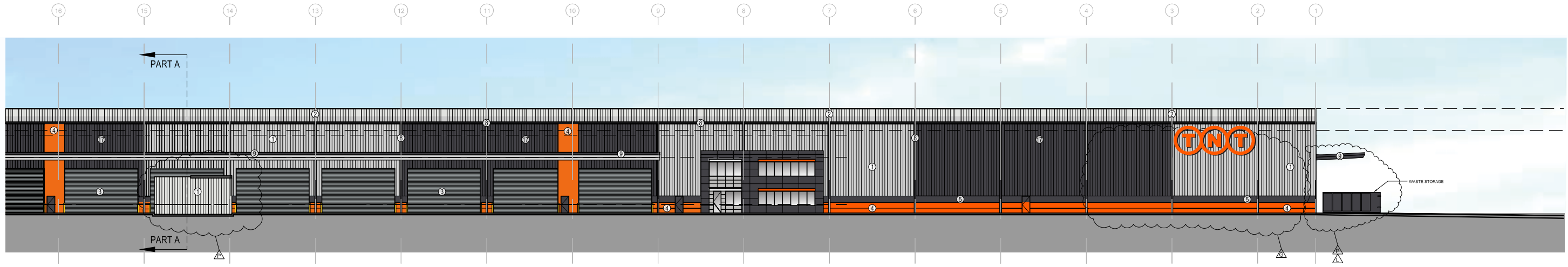
© COMMERCIAL & INDUSTRIAL PROPERTY PTY LTD. THIS DRAWING IS COPYRIGHT. APART FROM PERMITTED DEALINGS UNDER THE COPYRIGHT ACT, THIS DRAWING MAY NOT BE REPRODUCED BY ANY PERSON WITHOUT PERMISSION IN WRITING. ALL AREAS AND DIMENSIONS SHOWN ON DRAWINGS ARE APPROXIMATE ONLY AND ARE SUBJECT TO CONFIRMATION BY SURVEY

**REVISIONS**

A	SECTION 96 ISSUE	11.11.13
B	SECTION 96 ISSUE	28.03.14



**A NORTH ELEVATION- PART A**  
201 Scale 1:500



**A NORTH ELEVATION- PART B**  
201 Scale 1:500

**EXTERNAL FINISHES LEGEND**

- ① COLORBOND METAL CLADDING 1-SURFMIST
- ② ZINCALUME ROOF SHEETING WITH 10% TRANSLUCENT SHEETING
- ③ ROLLER SHUTTER DOORS - COLORBOND 'WINDSPRAY'
- ④ PAINTED CONCRETE PRECAST - PAINT FINISH TO MATCH PANTONE ORANGE 021
- ⑤ PAINTED CONCRETE PRECAST - PAINT FINISH (DARK GREY) TO MATCH COLORBOND 'MONUMENT'
- ⑥ PAINTED CONCRETE PRECAST - PAINT FINISH (LIGHT GREY)
- ⑦ PAINTED CONCRETE PRECAST - PAINT FINISH (WHITE)
- ⑧ GUTTERS, DOWNPIPES & TRIMS - COLORBOND 'MONUMENT'
- ⑨ WAREHOUSE AWNING- COLORBOND 'MONUMENT'
- ⑩ FEATURE PAINTED STEEL AWNINGS TO OFFICE- 'WHITE'
- ⑪ FEATURE PAINTED STEEL AWNINGS TO OFFICE- PANTONE ORANGE 021
- ⑫ SELECTED GLAZING TO COMPLY WITH SECTION J OF BCA
- ⑬ PAINTED CONCRETE COLUMNS TO CARPARK- PANTONE ORANGE 021
- ⑭ CARPARK FEATURE ELEMENT- PAINTED ALUMINIUM
- ⑮ ALUCOBOND CLADDING OR SIMILAR- DARK GREY
- ⑯ ALUCOBOND LOUVERS- 'WHITE'
- ⑰ COLORBOND METAL CLADDING 1- 'MONUMENT'
- ⑱ POLYETHYLENE FIRE SPRINKLER TANK - GRAY
- ⑲ CHAIN WIRE PERIMETER MESH
- ⑳ ALUMINIUM PLANK SCREEN



**Developing Relationships Building Success**

Sydney | Melbourne | Brisbane | Adelaide | Perth  
www.ciproperty.com.au | National Enquiries: 1800 829 877

**PROJECT**  
**TNT WAREHOUSE & DISTRIBUTION FACILITY**  
LOT 201, DP 1133028  
LOCKWOOD RD, ERSKINE PARK NSW

**DRAWING TITLE**  
**ELEVATIONS- NORTH ELEVATION**  
**LENORE DRIVE**



CREATE DATE : 13.03.2014 PLOT DATE : 28.03.2014



2-047-275903-S96- 201 **B**

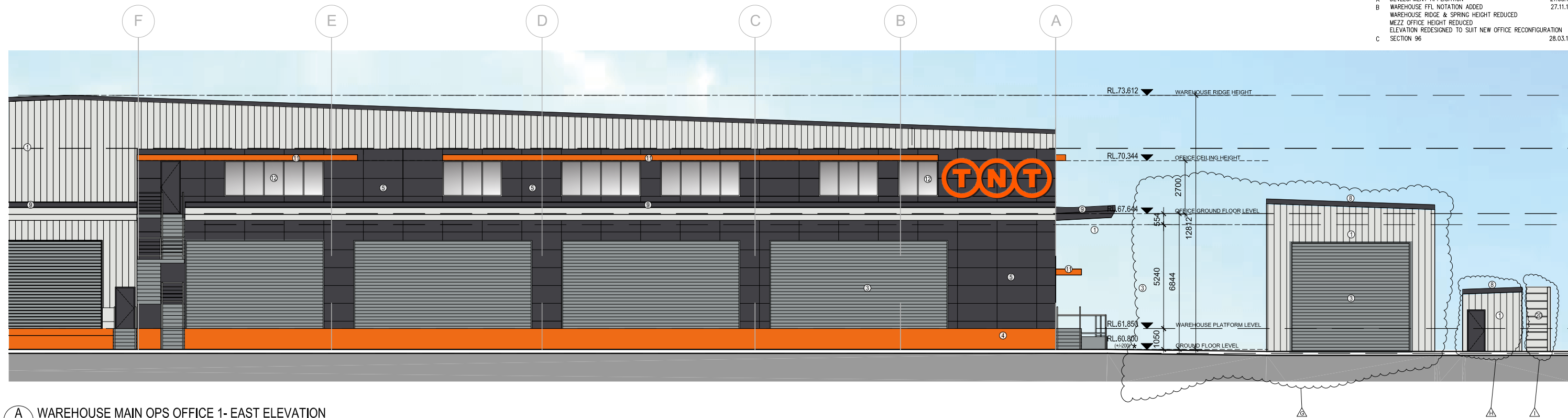
**SCHEDULE SECTION 96 CHANGES**

- G. TRUCK WASH HAS INCREASED IN SIZE FROM (11M X 6M) TO (27.5MT X 8.5MT) AND HAS BEEN RELOCATED NORTH OF THE WAREHOUSE BETWEEN GRIDS 23 TO 26
- H. A PUMP ROOM (6.5M X 3M) HAS BEEN ADDED TO THE TRUCK WASH BETWEEN GRIDS 25 TO 26
- I. FULL HEIGHT SCREENING HAS BEEN ADDED TO THE NORTHERN SIDE OF THE TRUCK WASH PUMP ROOM

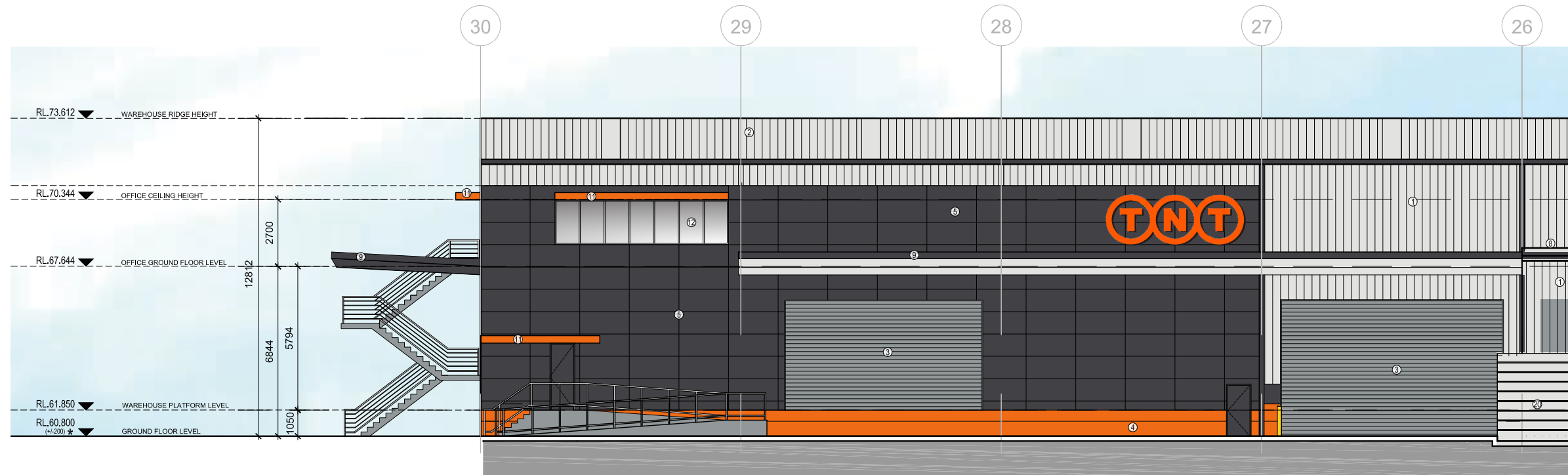
© COMMERCIAL & INDUSTRIAL PROPERTY PTY LTD. THIS DRAWING IS COPYRIGHT. APART FROM PERMITTED DEALINGS UNDER THE COPYRIGHT ACT, THIS DRAWING MAY NOT BE REPRODUCED BY ANY PERSON WITHOUT PERMISSION IN WRITING. ALL AREAS AND DIMENSIONS SHOWN ON DRAWINGS ARE APPROXIMATE ONLY AND ARE SUBJECT TO CONFIRMATION BY SURVEY

**REVISIONS**

REVISION	DESCRIPTION	DATE
A	DEVELOPMENT APPLICATION	21.08.13
B	WAREHOUSE FFL NOTATION ADDED	27.11.13
	WAREHOUSE RIDGE & SPRING HEIGHT REDUCED	
	MEZZ OFFICE HEIGHT REDUCED	
	ELEVATION REDESIGNED TO SUIT NEW OFFICE RECONFIGURATION	
C	SECTION 96	28.03.14



**A WAREHOUSE MAIN OPS OFFICE 1- EAST ELEVATION**  
211 Scale 1:200



**B WAREHOUSE MAIN OPS OFFICE 1- NORTH ELEVATION**  
211 Scale 1:200

**EXTERNAL FINISHES LEGEND**

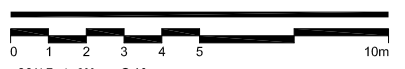
- ① COLORBOND METAL CLADDING 1- 'SURFMIST'
- ② ZINCALUME ROOF SHEETING WITH 10% TRANSLUCENT SHEETING
- ③ ROLLER SHUTTER DOORS - COLORBOND 'WINDSPRAY'
- ④ PAINTED CONCRETE PRECAST - PAINT FINISH TO MATCH PANTONE ORANGE 021
- ⑤ PAINTED CONCRETE PRECAST - PAINT FINISH (DARK GREY) TO MATCH COLORBOND 'MONUMENT'
- ⑥ PAINTED CONCRETE PRECAST - PAINT FINISH (LIGHT GREY)
- ⑦ PAINTED CONCRETE PRECAST - PAINT FINISH (WHITE)
- ⑧ GUTTERS, DOWNPIPES & TRIMS - COLORBOND 'MONUMENT'
- ⑨ WAREHOUSE AWNING- COLORBOND 'MONUMENT'
- ⑩ FEATURE PAINTED STEEL AWNINGS TO OFFICE- 'WHITE'
- ⑪ FEATURE PAINTED STEEL AWNINGS TO OFFICE- PANTONE ORANGE 021
- ⑫ SELECTED GLAZING TO COMPLY WITH SECTION J OF BCA
- ⑬ PAINTED CONCRETE COLUMNS TO CARPARK- PANTONE ORANGE 021
- ⑭ CARPARK FEATURE ELEMENT- PAINTED ALUMINUM
- ⑮ ALUCOBOND CLADDING OR SIMILAR- DARK GREY
- ⑯ ALUCOBOND LOUVERS- 'WHITE'
- ⑰ COLORBOND METAL CLADDING 1- 'MONUMENT'
- ⑱ POLYETHYLENE FIRE SPRINKLER TANK - GRAY
- ⑲ CHAIN WIRE PERIMETER MESH
- ⑳ ALUMINUM PLANK SCREEN

**CIP**  
Developing Relationships Building Success

Sydney | Melbourne | Brisbane | Adelaide | Perth  
www.ciproperty.com.au | National Enquiries: 1800 829 877

**TNT WAREHOUSE & DISTRIBUTION FACILITY**  
LOT 201, DP 1133028  
LOCKWOOD RD, ERSKINE PARK NSW

DRAWING TITLE  
**ELEVATIONS- WAREHOUSE MAIN OPS OFFICE 1**



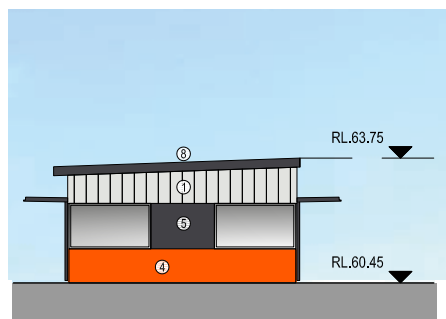
CREATE DATE : 13.03.2014 PLOT DATE : 28.03.2014

2-047-275903-S96- 211 **C**

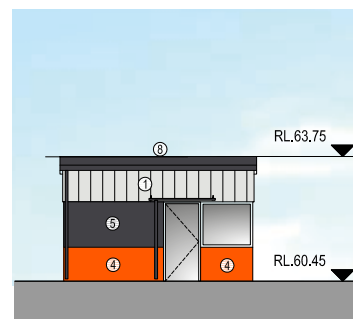


REVISIONS

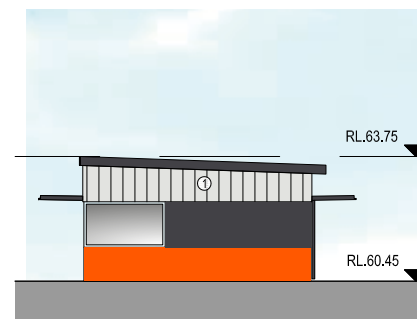
A SECTION 96 28.03.14



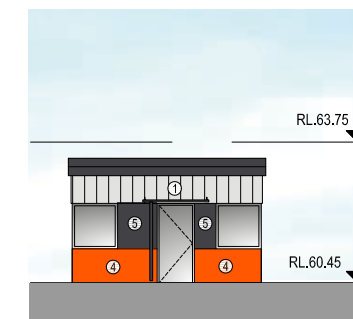
A GATE HOUSE- WEST ELEVATION  
213 Scale 1:200



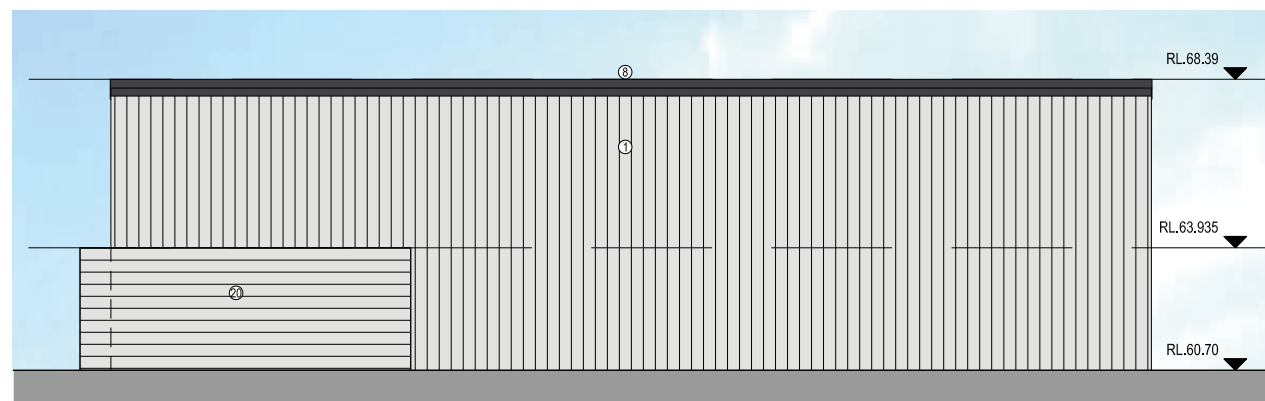
B GATE HOUSE- SOUTH ELEVATION  
213 Scale 1:200



C GATE HOUSE- EAST ELEVATION  
213 Scale 1:200



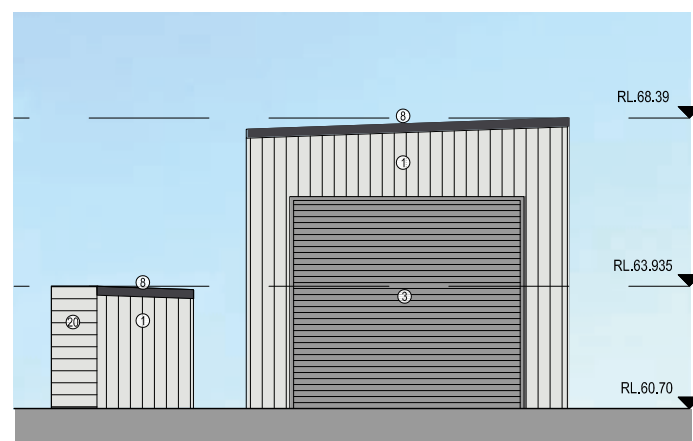
D GATE HOUSE- NORTH ELEVATION  
213 Scale 1:200



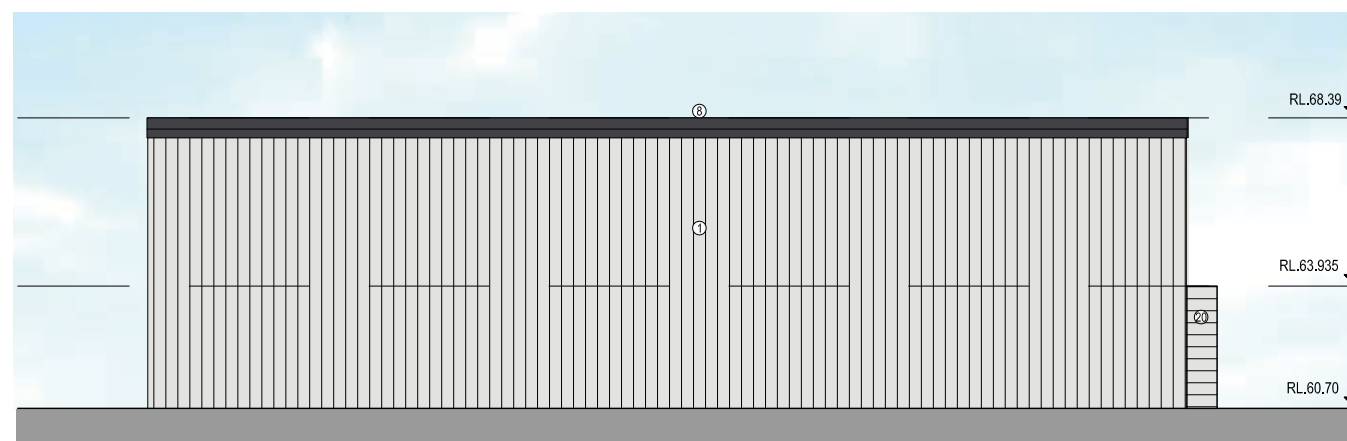
E TRUCK WASH- SOUTH ELEVATION  
213 Scale 1:200



F TRUCK WASH- WEST ELEVATION  
213 Scale 1:200



G TRUCK WASH- EAST ELEVATION  
213 Scale 1:200



H TRUCK WASH- NORTH ELEVATION  
213 Scale 1:200

EXTERNAL FINISHES LEGEND

- ① COLORBOND METAL CLADDING 1- 'SURFMIST'
- ② ZINCALUME ROOF SHEETING WITH 10% TRANSLUCENT SHEETING
- ③ ROLLER SHUTTER DOORS - COLORBOND 'WINDSPRAY'
- ④ PAINTED CONCRETE PRECAST - PAINT FINISH TO MATCH PANTONE ORANGE 021
- ⑤ PAINTED CONCRETE PRECAST - PAINT FINISH (DARK GREY) TO MATCH COLORBOND 'MONUMENT'
- ⑥ PAINTED CONCRETE PRECAST - PAINT FINISH (LIGHT GREY)
- ⑦ PAINTED CONCRETE PRECAST - PAINT FINISH (WHITE)
- ⑧ GUTTERS, DOWNPIPES & TRIMS - COLORBOND 'MONUMENT'
- ⑨ WAREHOUSE AWNING- COLORBOND 'MONUMENT'
- ⑩ FEATURE PAINTED STEEL AWNINGS TO OFFICE- 'WHITE'
- ⑪ FEATURE PAINTED STEEL AWNINGS TO OFFICE- PANTONE ORANGE 021
- ⑫ SELECTED GLAZING TO COMPLY WITH SECTION J OF BCA
- ⑬ PAINTED CONCRETE COLUMNS TO CARPARK- PANTONE ORANGE 021
- ⑭ CARPARK FEATURE ELEMENT- PAINTED ALUMINIUM
- ⑮ ALUCOBOND CLADDING OR SIMILAR- DARK GREY
- ⑯ ALUCOBOND LOUVERS- 'WHITE'
- ⑰ COLORBOND METAL CLADDING 1- 'MONUMENT'
- ⑱ POLYETHYLENE FIRE SPRINKLER TANK - GRAY
- ⑲ CHAIN WIRE PERIMETER MESH
- ⑳ ALUMINIUM PLANK SCREEN



Sydney | Melbourne | Brisbane | Adelaide | Perth  
www.ciproperty.com.au | National Enquiries: 1800 829 877

PROJECT  
**TNT WAREHOUSE & DISTRIBUTION FACILITY**  
LOT 201, DP 1133028  
LOCKWOOD RD, ERSKINE PARK NSW

DRAWING TITLE  
**ELEVATIONS- GATEHOUSE & TRUCK WASH**

0 1 2 3 4 5 10m  
SCALE: 1:200 @ A3

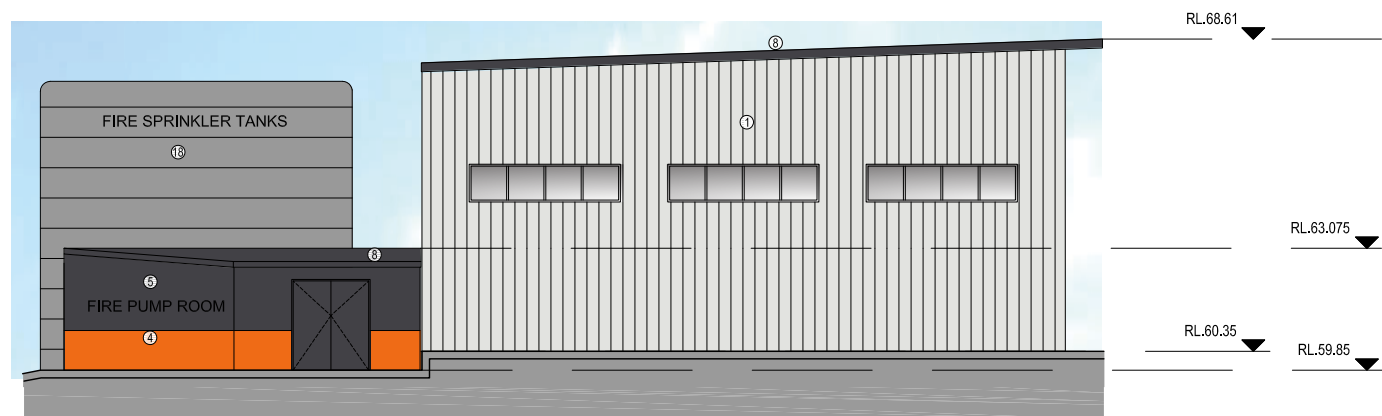
CREATE DATE: 13.03.2014 PLOT DATE: 27.03.2014



2-047-275903-S96- 213 A

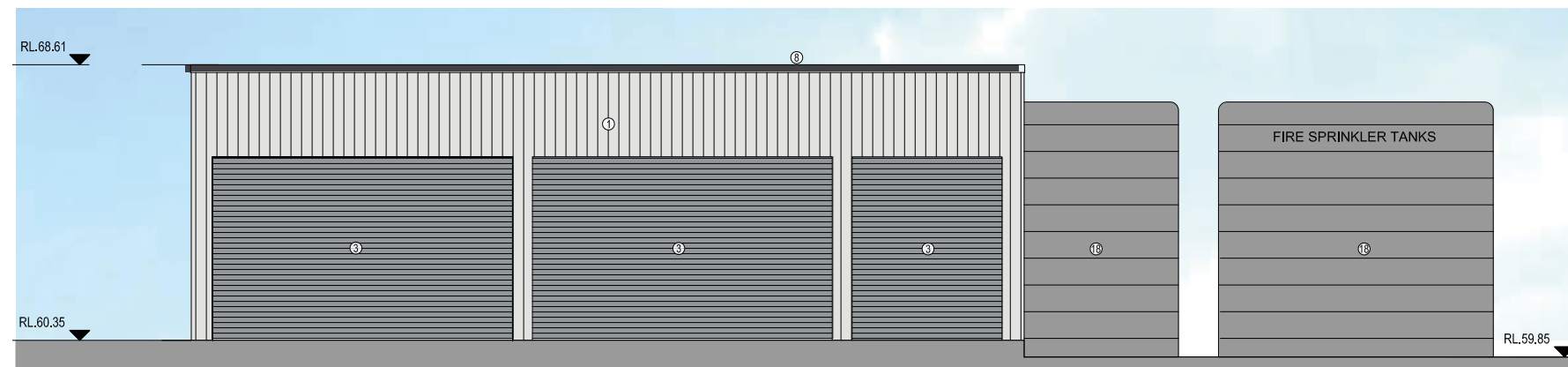
REVISIONS

A SECTION 96 28.03.14



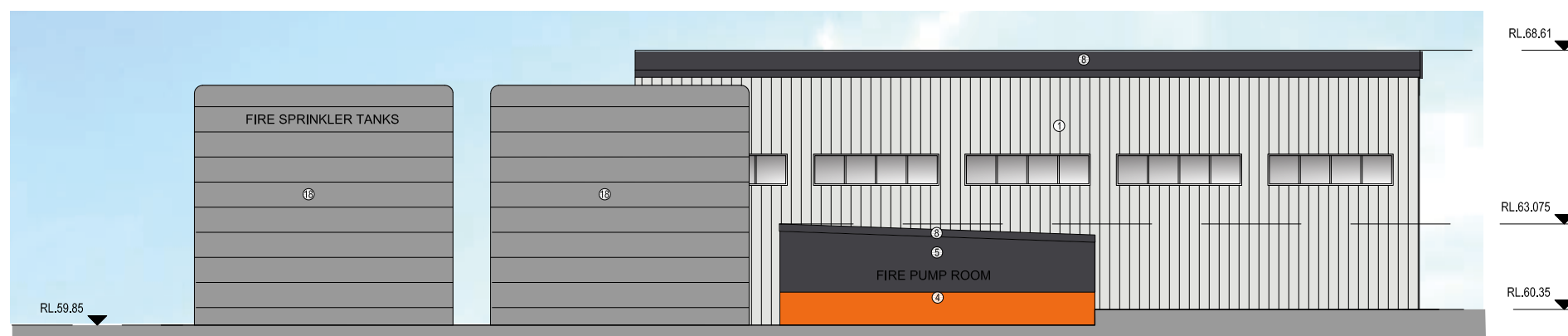
A TRUCK MAINTENANCE- SOUTH ELEVATION

214 Scale 1:200



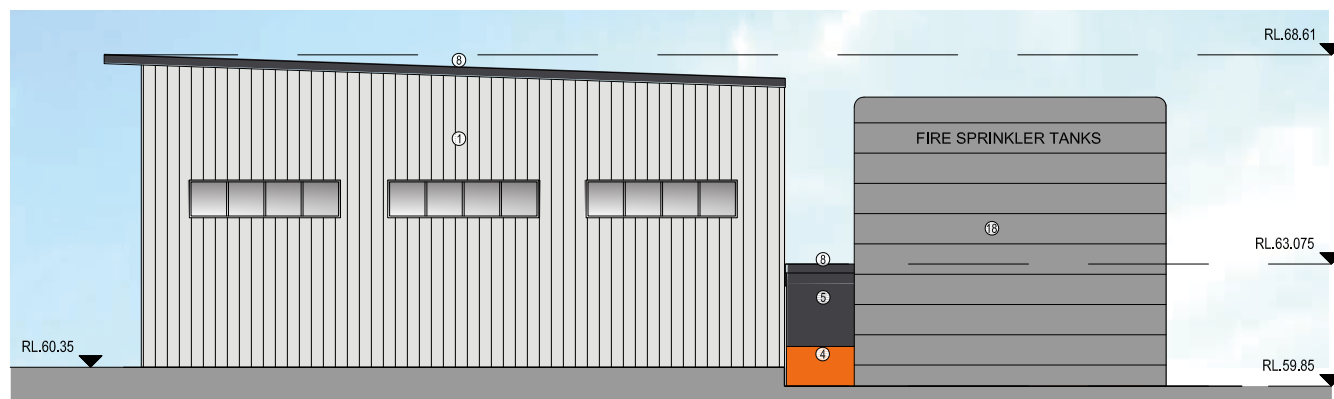
B TRUCK MAINTENANCE- EAST ELEVATION

214 Scale 1:200



C TRUCK MAINTENANCE- WEST ELEVATION

214 Scale 1:200



D TRUCK MAINTENANCE- NORTH ELEVATION

214 Scale 1:200

EXTERNAL FINISHES LEGEND	
①	COLORBOND METAL CLADDING 1- 'SURFMASTER'
②	ZINCALUME ROOF SHEETING WITH 10% TRANSLUCENT SHEETING
③	ROLLER SHUTTER DOORS - COLORBOND 'WINDSPRAY'
④	PAINTED CONCRETE PRECAST - PAINT FINISH TO MATCH PANTONE ORANGE 021
⑤	PAINTED CONCRETE PRECAST - PAINT FINISH (DARK GREY) TO MATCH COLORBOND 'MONUMENT'
⑥	PAINTED CONCRETE PRECAST - PAINT FINISH (LIGHT GREY)
⑦	PAINTED CONCRETE PRECAST - PAINT FINISH (WHITE)
⑧	GUTTERS, DOWNPIPES & TRIMS - COLORBOND 'MONUMENT'
⑨	WAREHOUSE AWNING - COLORBOND 'MONUMENT'
⑩	FEATURE PAINTED STEEL AWNINGS TO OFFICE- 'WHITE'
⑪	FEATURE PAINTED STEEL AWNINGS TO OFFICE- PANTONE ORANGE 021
⑫	SELECTED GLAZING TO COMPLY WITH SECTION J OF BCA
⑬	PAINTED CONCRETE COLUMNS TO CARPARK- PANTONE ORANGE 021
⑭	CARPARK FEATURE ELEMENT- PAINTED ALUMINIUM
⑮	ALUCOBOND CLADDING OR SIMILAR- DARK GREY
⑯	ALUCOBOND LOUVERS- 'WHITE'
⑰	COLORBOND METAL CLADDING 1- 'MONUMENT'
⑱	POLYETHYLENE FIRE SPRINKLER TANK - GRAY
⑲	CHAIN WIRE PERIMETER MESH
⑳	ALUMINIUM PLANK SCREEN

**CIP**  
Developing Relationships Building Success  
Sydney | Melbourne | Brisbane | Adelaide | Perth  
www.ciproperty.com.au | National Enquiries: 1800 829 877

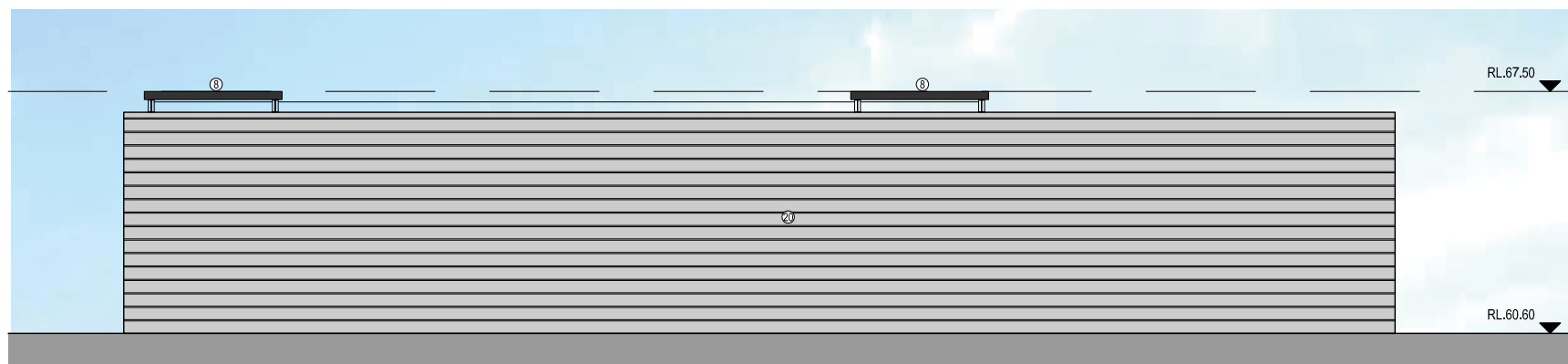
PROJECT  
**TNT WAREHOUSE & DISTRIBUTION FACILITY**  
LOT 201, DP 1133028  
LOCKWOOD RD, ERSKINE PARK NSW

DRAWING TITLE  
**ELEVATIONS- TRUCK MAINTENANCE**

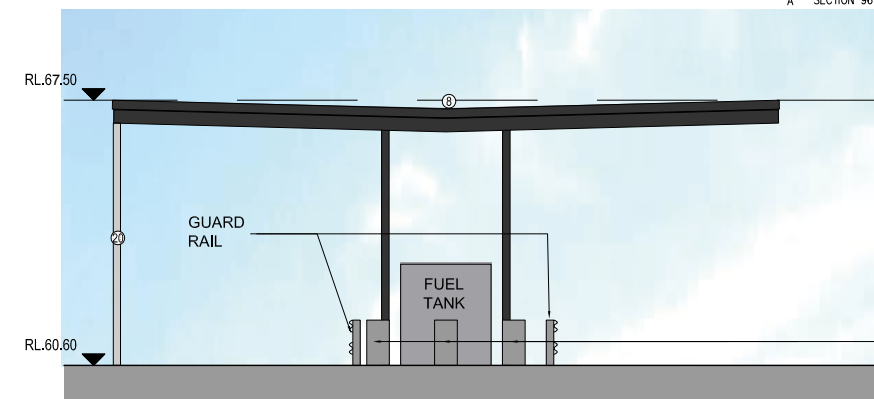


CREATE DATE : 13.03.2014 PLOT DATE : 28.03.2014

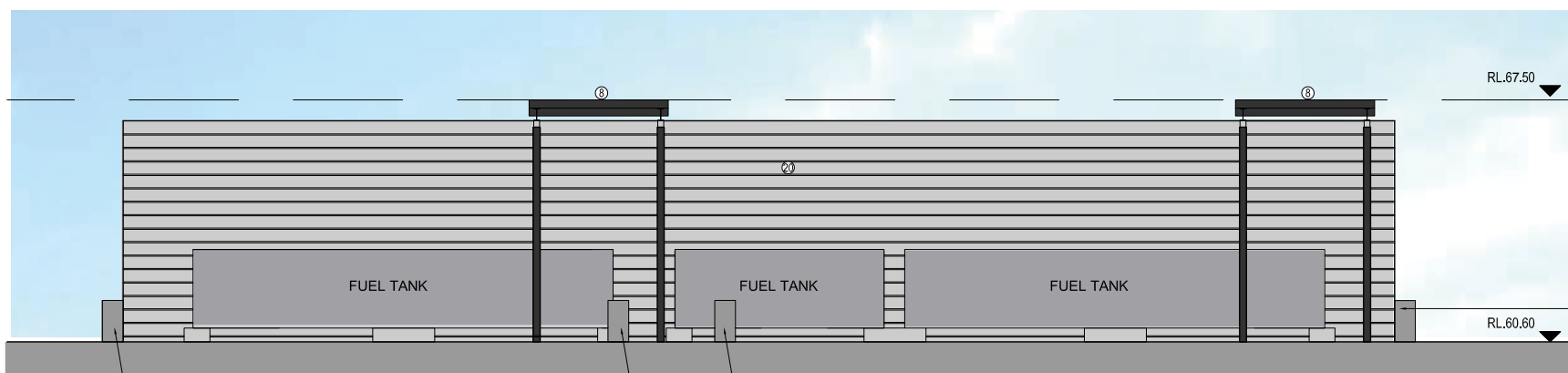




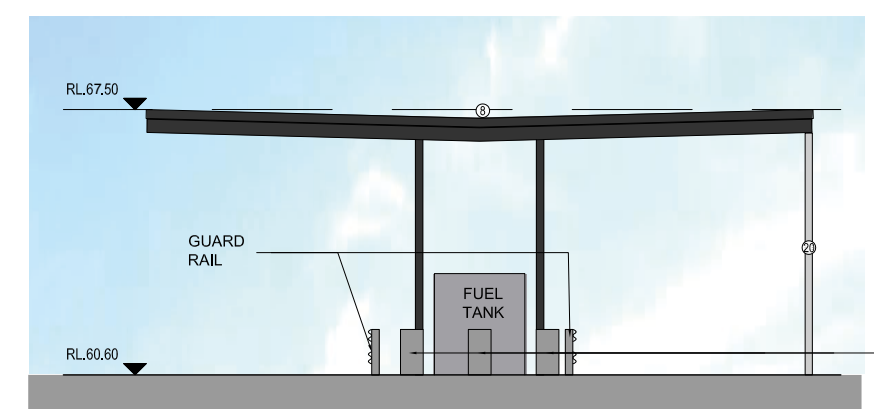
**A FUEL TANK- SOUTH ELEVATION**  
215 Scale 1:200



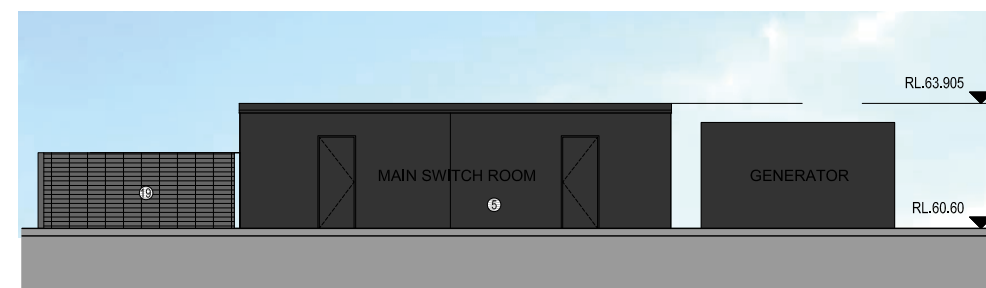
**B FUEL TANK- WEST ELEVATION**  
215 Scale 1:200



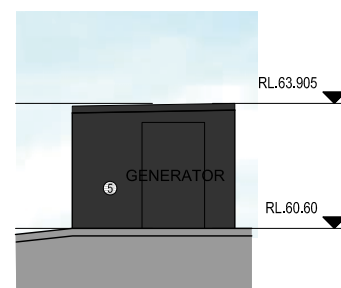
**C FUEL TANK- NORTH ELEVATION**  
215 Scale 1:200



**D FUEL TANK- EAST ELEVATION**  
215 Scale 1:200

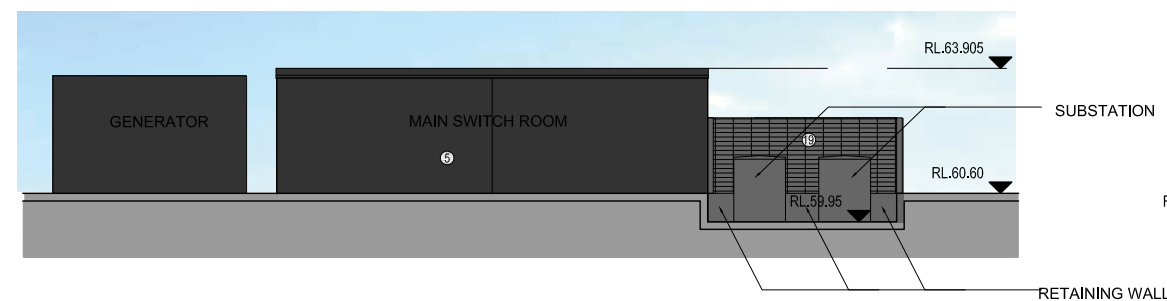


**E MSR, GEN., SUBSTATION- NORTH ELEVATION**  
215 Scale 1:200

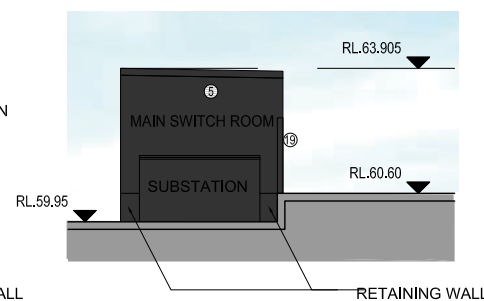


**F MSR, GEN., SUBSTATION- WEST ELEVATION**  
215 Scale 1:200

EXTERNAL FINISHES LEGEND	
①	COLORBOND METAL CLADDING 1- 'SURFMST'
②	ZINCALUME ROOF SHEETING WITH 10% TRANSLUCENT SHEETING
③	ROLLER SHUTTER DOORS- COLORBOND 'WINDSPRAY'
④	PAINTED CONCRETE PRECAST- PAINT FINISH TO MATCH PANTONE ORANGE 021
⑤	PAINTED CONCRETE PRECAST- PAINT FINISH (DARK GREY) TO MATCH COLORBOND 'MONUMENT'
⑥	PAINTED CONCRETE PRECAST- PAINT FINISH (LIGHT GREY)
⑦	PAINTED CONCRETE PRECAST- PAINT FINISH (WHITE)
⑧	GUTTERS, DOWNPIPES & TRIMS - COLORBOND 'MONUMENT'
⑨	WAREHOUSE AWNING- COLORBOND 'MONUMENT'
⑩	FEATURE PAINTED STEEL AWNINGS TO OFFICE- 'WHITE'
⑪	FEATURE PAINTED STEEL AWNINGS TO OFFICE- PANTONE ORANGE 021
⑫	SELECTED GLAZING TO COMPLY WITH SECTION J OF BCA
⑬	PAINTED CONCRETE COLUMNS TO CARPARK- PANTONE ORANGE 021
⑭	CARPARK FEATURE ELEMENT- PAINTED ALUMINIUM
⑮	ALUCOBOND CLADDING OR SIMILAR- DARK GREY
⑯	ALUCOBOND LOUVERS- WHITE
⑰	COLORBOND METAL CLADDING 1- 'MONUMENT'
⑱	POLYETHYLENE FIRE SPRINKLER TANK- GRAY
⑲	CHAIN WIRE PERIMETER MESH
⑳	ALUMINIUM PLANK SCREEN



**G MSR, GEN., SUBSTATION- SOUTH ELEVATION**  
215 Scale 1:200



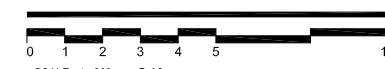
**H MSR, GEN., SUBSTATION- EAST ELEVATION**  
215 Scale 1:200



Sydney | Melbourne | Brisbane | Adelaide | Perth  
www.ciproperty.com.au | National Enquiries: 1800 829 877

PROJECT  
**TNT WAREHOUSE & DISTRIBUTION FACILITY**  
LOT 201, DP 1133028  
LOCKWOOD RD, ERSKINE PARK NSW

DRAWING TITLE  
**ELEVATIONS- FUEL TANK, MSR, GENERATOR, SUBSTATION**



CREATE DATE: 13.03.2014 PLOT DATE: 28.03.2014

