

# Notice of Modification

## Section 96(1A) of the *Environmental Planning and Assessment Act 1979*

As delegate for the Minister for Planning under delegation dated 14 September 2011, I hereby modify the development consent SSD 6040 referred to in Schedule 1, subject to the Conditions in Schedule 2.

  
Daniel Keary  
Director  
Industry, Key Sites and Social Projects

Sydney 20<sup>th</sup> AUGUST 2014

### SCHEDULE 1

The development consent (SSD 6040) granted by the Executive Director, Development Assessment Systems and Approvals (as Delegate of the Minister for Planning) for the construction and operation of a warehouse and distribution facility on 4 February 2014.

### SCHEDULE 2

1. In the definitions, delete the definition of 'Development' and insert the following definition:

Development	The development as described in the EIS and RTS as modified by SSD 6040 MOD 1 and SSD 6040 MOD 2, for the construction of a warehouse and distribution facility for sorting and processing goods and documents and includes: <ul style="list-style-type: none"><li>• 29,740m<sup>2</sup> of a single level warehouse space with raised loading dock;</li><li>• 2,162m<sup>2</sup> of ancillary office and maintenance areas;</li><li>• a hardstand area of 35,521m<sup>2</sup> for vehicle circulation and parking;</li><li>• new access driveways for cars and trucks from Lockwood Road; and</li><li>• other ancillary development on the site.</li></ul>
-------------	---

2. Insert the following definition in the Definitions:

SSD 6040 MOD 2	Second modification application to SSD 6040, including accompanying Statement of Support (11 June 2014), amended Site Plan (S96-002-E), amended Site Plan Indicative Sortation Equipment Layout (S96-004-D), amended Elevations - Overall (S96-200-E), Elevations - Gatehouse & Truck Wash (S96-213-A), Elevations - Truck Maintenance (S96_215-A), Landscape - Colour Masterplan (Job No. 13-136-D) and Landscape Detail Plans (Job No. 13-136, Drawing Nos 200 to 205, 301 and 501 (all Issue D)).
----------------	--

3. Replace Condition B2 of with the following:

B2	The Applicant shall carry out the development generally in accordance with the: <ol style="list-style-type: none"><li>(a) EIS;</li><li>(b) RTS;</li><li>(c) Modification Application SSD 6040 MOD 1;</li><li>(d) Modification Application SSD 6040 MOD 2;</li><li>(e) plans and elevations (see Appendix 1);</li></ol>
----	--

(g) conditions of this consent.

4. Replace "Figure 1: Proposed Site Layout" at Appendix 1 with the amended site plan "*Site Plan (S96-002-E)*".
5. Replace "Figure 2: Proposed Elevations" at Appendix 1 with the amended elevations plan "*Elevations Plan (S96-200-E)*".
6. Insert the following additional condition after Condition B16:

**EXTERNAL APPEARANCE OF THE TRUCK WASH, TRUCK MAINTENANCE BUILDING AND FUEL TANK SCREENING**

- B17      The Applicant shall amend the elevations of the truck wash, truck maintenance building and full height screening to the fuel tank (south elevation), as depicted on elevations S96-213-A, S96-214-A and S96-215-A to provide for improved architectural detailing and colouring, consistent with the appearance of the approved Warehouse and Main Ops Office (i.e. oversize drain pipes, orange panels etc), to the satisfaction of Council.

APPENDIX 1  
PLANS AND ELEVATIONS

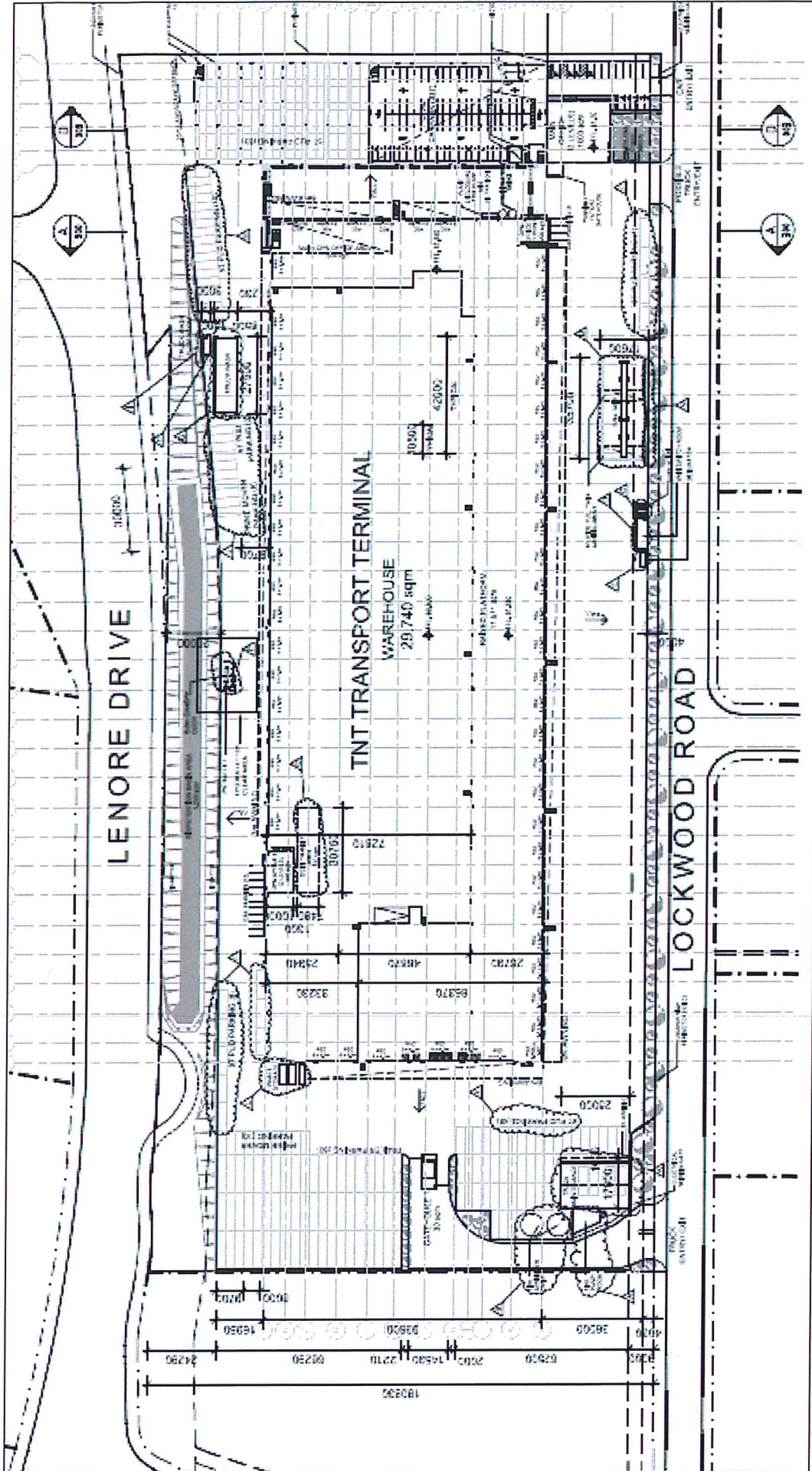


Figure 1: Proposed Site Layout (Plan No. S96-002-E) (Amended by SSD 6040 MOD 2)

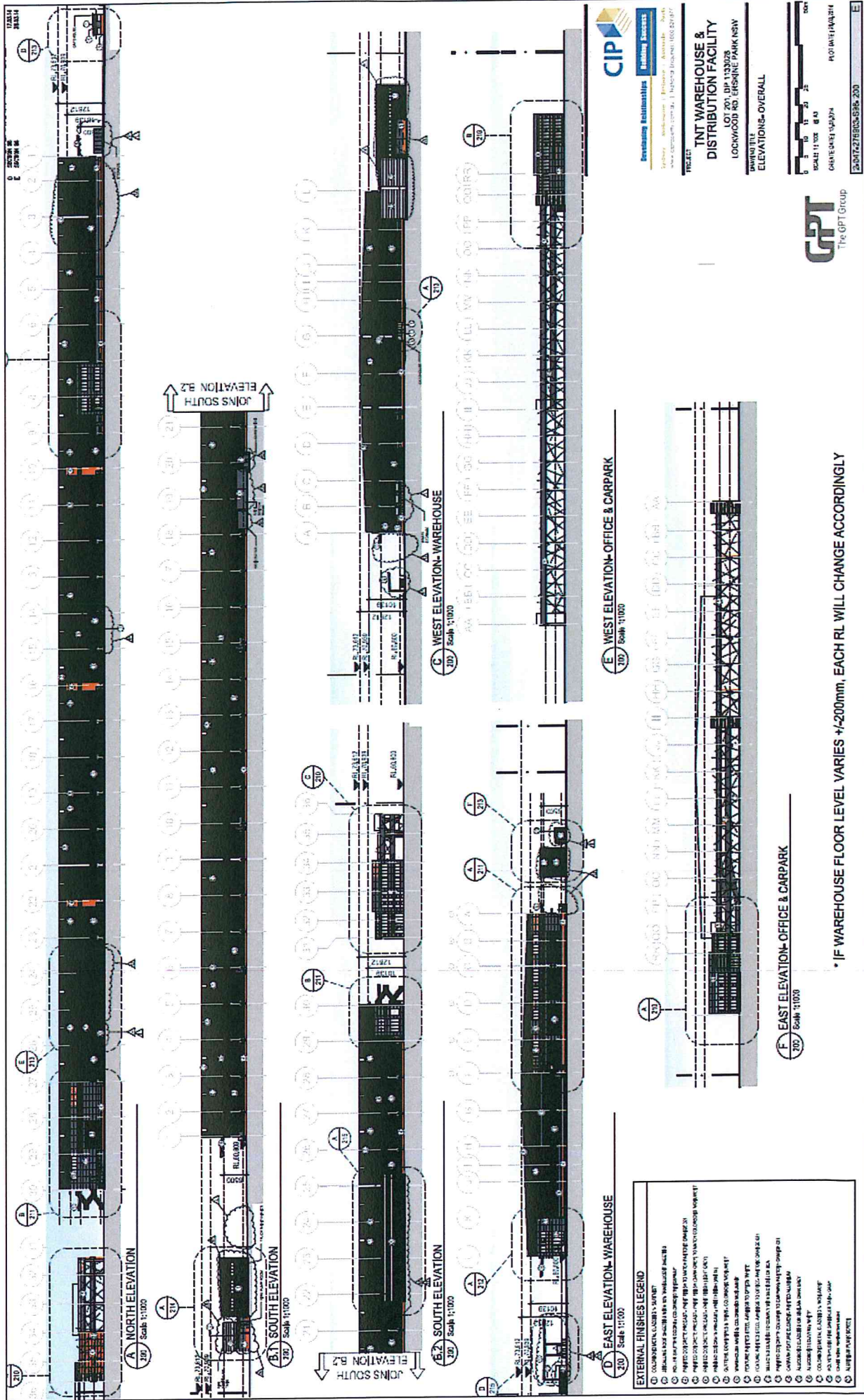


Figure 2: Proposed Elevations (Plan No. S96-200-E) (Amended by SSD 6040 MOD 2)