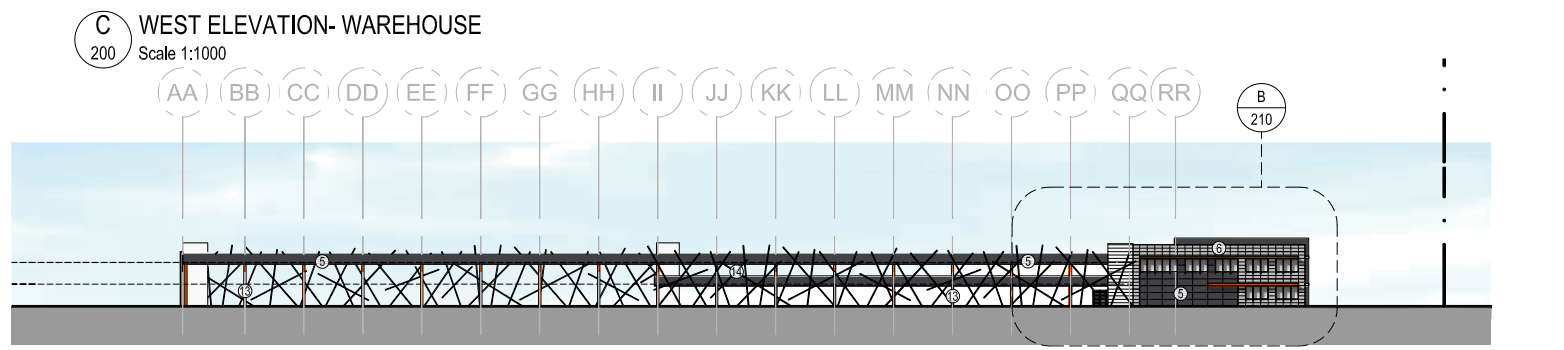
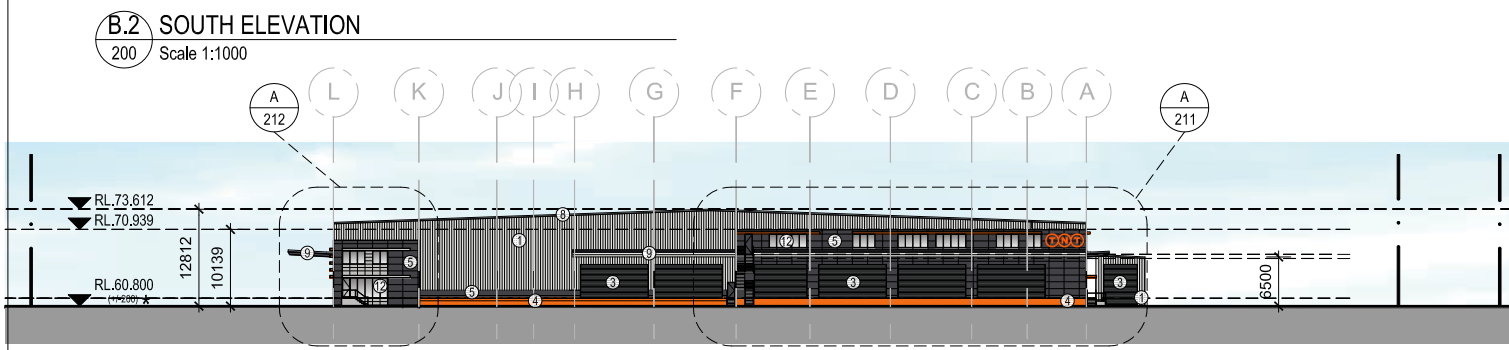
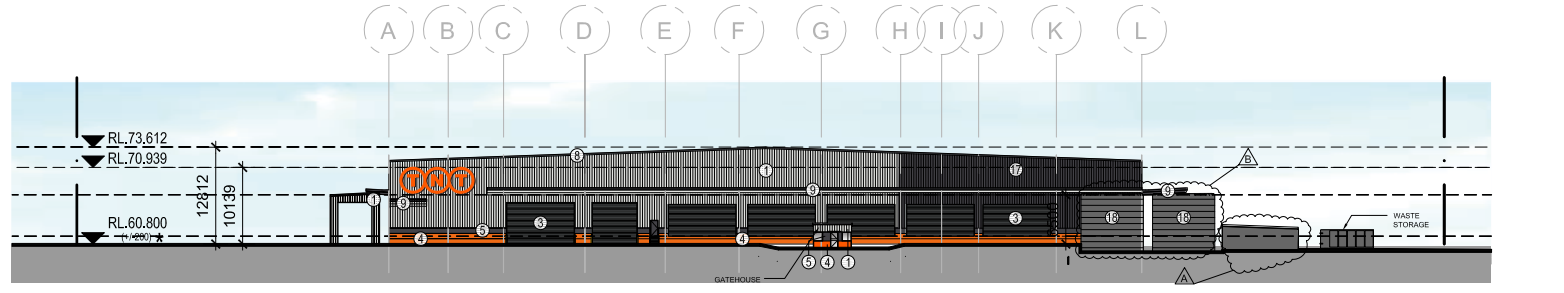
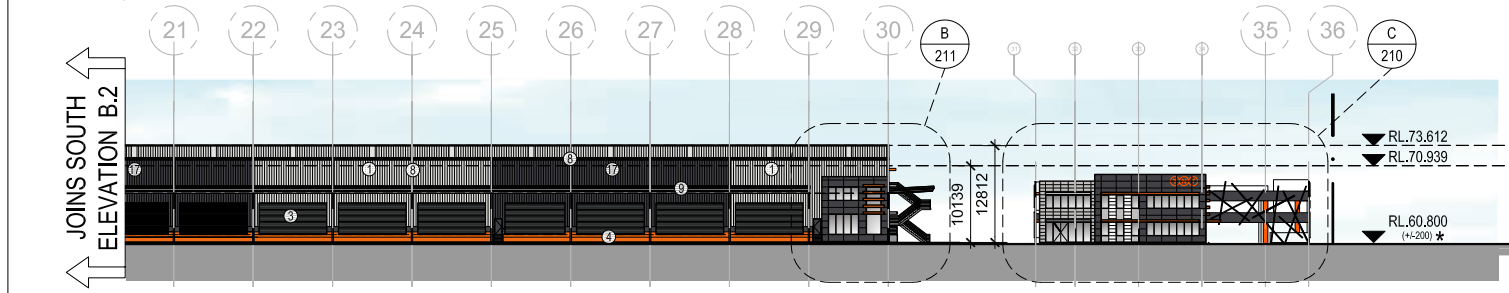
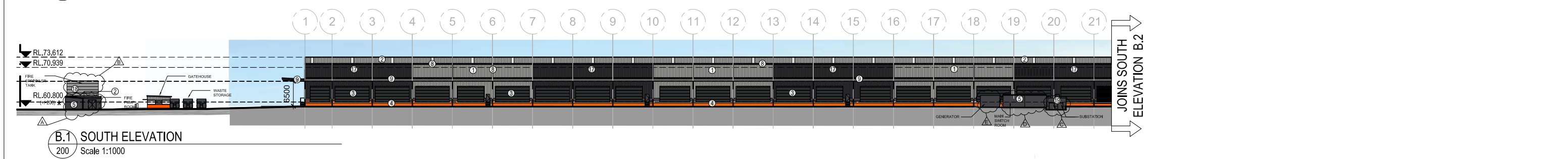
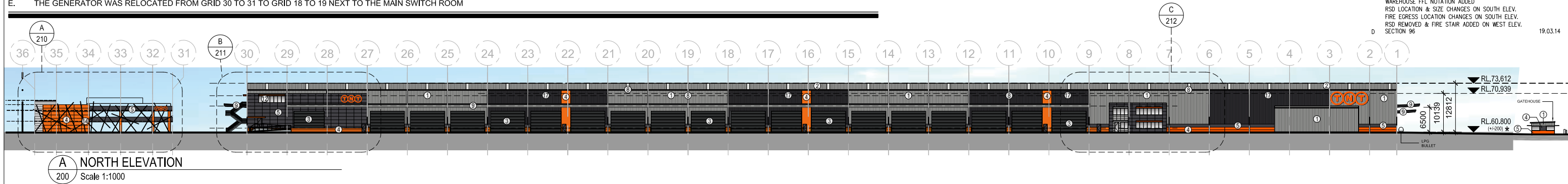


SCHEDULE SECTION 96 CHANGES

- A. FIRE PUMP ROOM HAS BEEN RELOCATED TO THE SOUTH WEST CORNER OF THE SITE
- B. THE FIRE SPRINKLER TANK WAS CHANGED FROM A SINGLE TANK TO DUAL 8.5M DIAMETER TANKS
- C. THE SINGLE 1000KVA SUBSTATION WAS INCREASED TO DUAL 1000 KVA SUBSTATIONS AND RELOCATED FROM GRIDS 29 TO 30 TO GRIDS 19 TO 21
- D. THE MAIN SWITCH ROOM (4.3M X 11.4M) WAS RELOCATED FROM AN INTERNAL LOCATION IN THE WAREHOUSE TO BETWEEN GRIDS 18 TO 20 ON THE LOCKWOOD ROAD BOUNDARY ADJACENT TO THE SUBSTATIONS
- E. THE GENERATOR WAS RELOCATED FROM GRID 30 TO 31 TO GRID 18 TO 19 NEXT TO THE MAIN SWITCH ROOM

© COMMERCIAL & INDUSTRIAL PROPERTY PTY LTD. THIS DRAWING IS COPYRIGHT. APART FROM PERMITTED DEALINGS UNDER THE COPYRIGHT ACT, THIS DRAWING MAY NOT BE REPRODUCED BY ANY PERSON WITHOUT PERMISSION IN WRITING. ALL AREAS AND DIMENSIONS SHOWN ON DRAWINGS ARE APPROXIMATE ONLY AND ARE SUBJECT TO CONFIRMATION BY SURVEY

REVISIONS		
A	DEVELOPMENT APPLICATION	21.08.13
B	ORANGE PRECAST PANELS ADDED ALONG NORTHERN ELEVATION	18.11.13
C	WAREHOUSE RIDGE & SPRING HEIGHT REDUCED WAREHOUSE FFL NOTATION ADDED RSD LOCATION & SIZE CHANGES ON SOUTH ELEV. FIRE EGRESS LOCATION CHANGES ON SOUTH ELEV. RSD REMOVED & FIRE STAIR ADDED ON WEST ELEV. SECTION 96	27.11.13 19.03.14



EXTERNAL FINISHES LEGEND

- 1 COLORBOND METAL CLADDING 1-'SURFMIST'
- 2 ZINCALUME ROOF SHEETING WITH 10% TRANSLUCENT SHEETING
- 3 ROLLER SHUTTER DOORS - COLORBOND 'WINDSPRAY'
- 4 PAINTED CONCRETE PRECAST - PAINT FINISH TO MATCH PANTONE ORANGE 021
- 5 PAINTED CONCRETE PRECAST - PAINT FINISH (DARK GREY) TO MATCH COLORBOND 'MONUMENT'
- 6 PAINTED CONCRETE PRECAST - PAINT FINISH (LIGHT GREY)
- 7 PAINTED CONCRETE PRECAST - PAINT FINISH (WHITE)
- 8 GUTTERS, DOWNPIPES & TRIMS - COLORBOND 'MONUMENT'
- 9 WAREHOUSE AWNING- COLORBOND 'MONUMENT'
- 10 FEATURE PAINTED STEEL AWNINGS TO OFFICE- 'WHITE'
- 11 FEATURE PAINTED STEEL AWNINGS TO OFFICE- PANTONE ORANGE 021
- 12 SELECTED GLAZING TO COMPLY WITH SECTION J OF BCA
- 13 PAINTED CONCRETE COLUMNS TO CARPARK- PANTONE ORANGE 021
- 14 CARPARK FEATURE ELEMENT- PAINTED ALUMINIUM
- 15 ALUCOBOND CLADDING OR SIMILAR- DARK GREY
- 16 ALUCOBOND LOUVERS- 'WHITE'
- 17 COLORBOND METAL CLADDING 1-'MONUMENT'
- 18 POLYETHYLENE FIRE SPRINKLER TANK- GRAY
- 19 CHAIN WIRE PERIMETER MESH

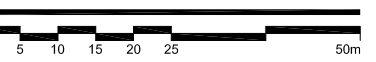
* IF WAREHOUSE FLOOR LEVEL VARIES +/-200mm, EACH RL WILL CHANGE ACCORDINGLY

CIP
Developing Relationships Building Success

Sydney | Melbourne | Brisbane | Adelaide | Perth
www.ciproperty.com.au | National Enquiries: 1800 829 877

PROJECT
TNT WAREHOUSE & DISTRIBUTION FACILITY
LOT 201, DP 1133028
LOCKWOOD RD, ERSKINE PARK NSW

DRAWING TITLE
ELEVATIONS- OVERALL



CREATE DATE: 18.03.2014 PLOT DATE: 19.03.2014

2-047-275903-S96-200 **D**

