

STORMWATER MASTERPLAN
SCALE 1:1000

LEGEND:
LEVELS DATUM IS AHD.
EXISTING SITE LEVELS AND DETAILS BASED ON SURVEY INFORMATION PROVIDED BY LAND PARTNERS TITLED 71718 REV. B DATED 11/08/11.

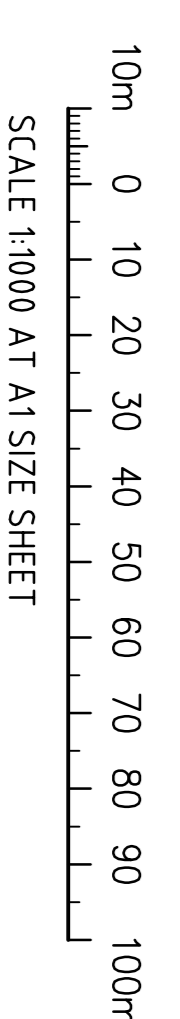
- S-GGP, SINGLE GRATED GULLY PIT
- S-JP, SEALED JUNCTION PIT
- KIP, KERB INLET PIT
- GD, GRATED DRAIN (300 WIDE UNO)
- SW, PROPOSED DRAINAGE LINE
- EX, EXISTING DRAINAGE LINE
- SD, ROOF WATER LINE (SYPHONIC)
- RW, ROOF WATER LINE (IN-GROUND)
- DP, DOWNPIPE LOCATION
- SS, SUBSOIL LINE
- MA, FINISHED PAVEMENT CONTOUR (MAJOR) 0.5m INTERVALS
- MI, FINISHED PAVEMENT CONTOUR (MINOR) 0.1m INTERVALS
- DENOTES OVERLAND FLOWPATH DIRECTION
- OVERHEAD ELECTRICITY
- UNDERGROUND ELECTRICITY
- SEWER LINE ○ - SEWER MANHOLE
- WATER
- TELECOMMUNICATION
- GAS
- CUT-OFF DRAIN, REFER TO DRG. CC20

NOTE:
1. REFER TO DRAWING C01004.7.03-DA10 FOR STORMWATER DRAINAGE NOTES.
2. PIT SIZES NOMINATED IN SCHEDULE REFER TO GRATE OR LINTEL SIZE. REFER TO DRAWING C01004.7.03-DA45 & DA46 FOR STORMWATER DETAILS AND PIT INTERNAL CHAMBER DIMENSIONS.

PIT SCHEDULE

PIT No.	GRATE RL	DEPTH	TYPE	SIZE	COMMENT
P01	52.40	1000	SGGP	900x900	
P02	52.40	1130	SGGP	900x900	
P03	52.40	1260	SGGP	900x900	
P04	51.60	850	SGGP	900x900	+ GD01
P05	52.80	2240	SGGP	900x900	
P06	52.15	1710	SGGP	900x900	
P07	52.45	2130	SGGP	900x900	
P08	52.60	2450	SGGP	900x900	
P09	52.60	2670	SGGP	900x900	
P10	52.60	2840	SGGP	900x900	
P11	52.75	3080	SJP	900x900	
P12	52.40	1000	SGGP	900x900	
P13	52.40	1180	SGGP	900x900	
P14	52.40	1380	SGGP	900x900	
P15	52.60	3060	SGGP	900x900	
P16	52.60	3280	SGGP	900x900	
P17	52.40	1000	SGGP	900x900	
P18	52.10	1030	SGGP	900x900	
P19	51.90	2800	SGGP	900x900	
P20	52.80	1200	SGGP	900x900	
P21	52.80	1430	SGGP	900x900	
P22	52.80	1630	SGGP	900x900	
P23	52.80	1830	SGGP	900x900	
P24	52.80	2050	SJP	900x900	
P25	51.70	1000	SGGP	900x900	+ GD02
P26	52.15	1610	SJP	900x900	
P27	52.60	2200	SGGP	900x900	
P28	52.20	2040	SGGP	900x900	
P29	52.20	2170	SGGP	900x900	
P30	52.20	2290	SGGP	900x900	
P31	51.60	1000	SGGP	900x900	+ GD03
P32	52.20	2380	SGGP	900x900	
P33	51.65	2010	SGGP	900x900	
P34	51.00	1000	SGGP	900x900	+ GD04
P35	51.00	1080	SGGP	900x900	
P36	51.00	1210	SGGP	900x900	
P37	51.00	1370	SGGP	900x900	
P38	51.50	3350	SJP	900x900	
R01	53.05	TBC	SGGP	1200x1200	DIV PIT
R02	52.90	TBC	SGGP	1200x1200	
E01	51.71	3000	SJP	1200x1200	
E02	51.50	2930	SJP	1200x1200	
E03	51.00	2830	SJP	1200x1200	
E04	50.65	2880	SJP	1200x1200	

➔ DENOTES PIT TO BE FITTED WITH ENVIROPOD SERIES 200 PIT INSERT
 DIV PIT - DENOTES LOW FLOW DIVERSION PIT
 LOW FLOW TO DIVERT TO FILTRATION UNIT
 + GD - DENOTES GRATED DRAIN/STORMWATER PIT WITH ENVIROPOD.
 REFER TO DETAIL ON DRG. DA46.



ISSUED FOR DEVELOPMENT APPLICATION	30.07.13	C
ISSUED FOR CLIENT REVIEW	22.07.13	B
ISSUED FOR CLIENT REVIEW	17.07.13	A
AMENDMENTS	DATE	ISSUE

CLIENT

Developing Relationships Building Success
Sydney | Melbourne | Brisbane | Adelaide | Perth
www.cipgroup.com.au | National Enquiries: 1800 829 877

PROJECT

FOOD PROCESSING & PACKAGING FACILITY	DESIGNED	DATE	CHECKED	SCALE	CDR REF.
PART LOT 2304, TEMPLAR ROAD	XC	06/2013	AT	A5:SDWM	C01004.7.03-DA40

Costin Roe Consulting Pty Ltd.
Consulting Engineers
Level 1, 8 Miranda Street
Miranda NSW 2227
Tel: (02) 926 5299 Fax: (02) 9241-3781
email: mail@costinroe.com.au

CostinRoe Consulting

DRAWING TITLE	ISSUE
STORMWATER MASTERPLAN	C
DRAWING No	
C01004.7.03-DA40	

FOR DEVELOPMENT APPLICATION

Value in Engineering and Management