

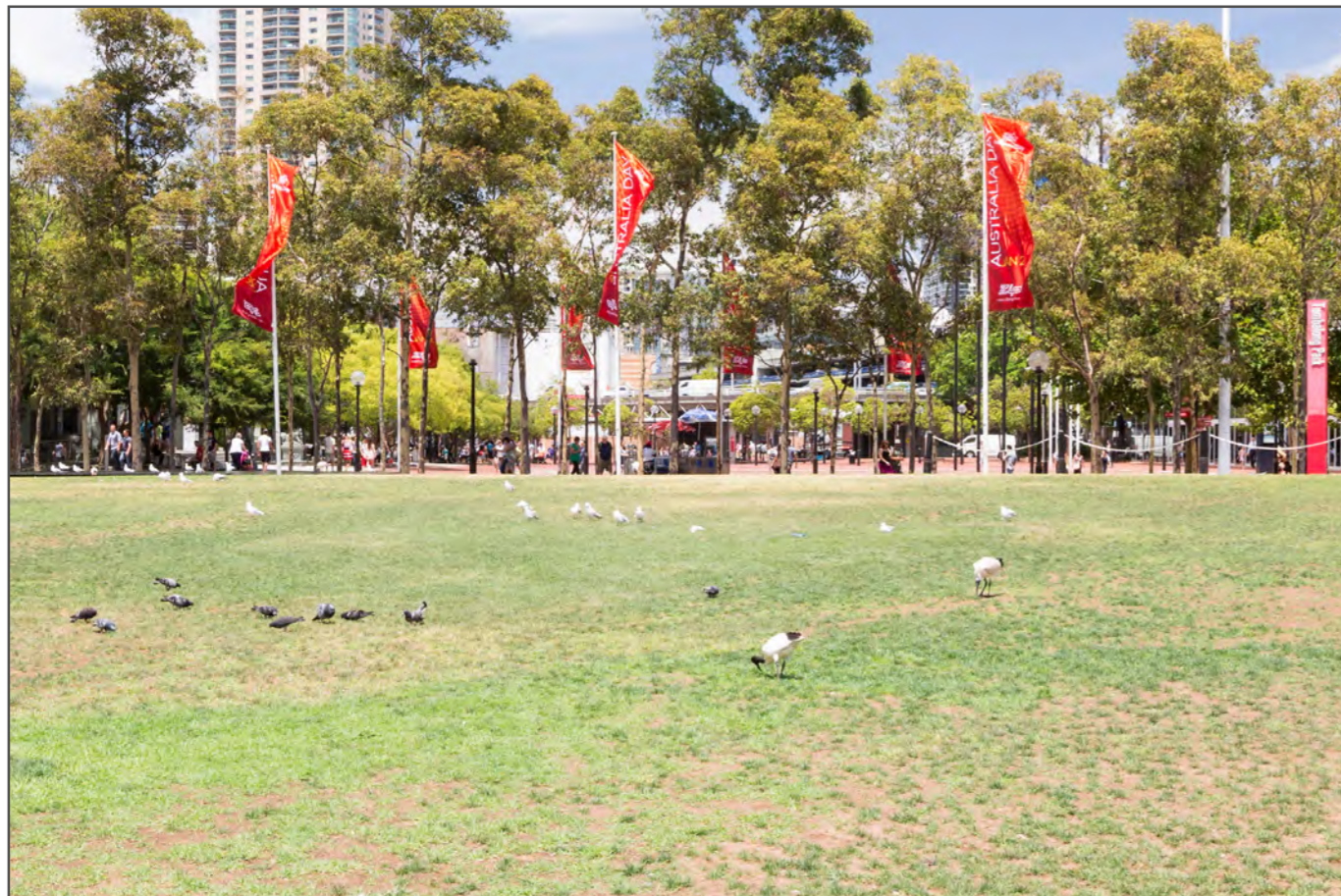




24mm - Original Image



24mm



50mm - Original Image



50mm



23mm - Original Image



23mm



50mm - Original Image



50mm



25mm - Original Image



25mm



50mm - Original Image



50mm



24mm - Original Image



24mm



50mm - Original Image



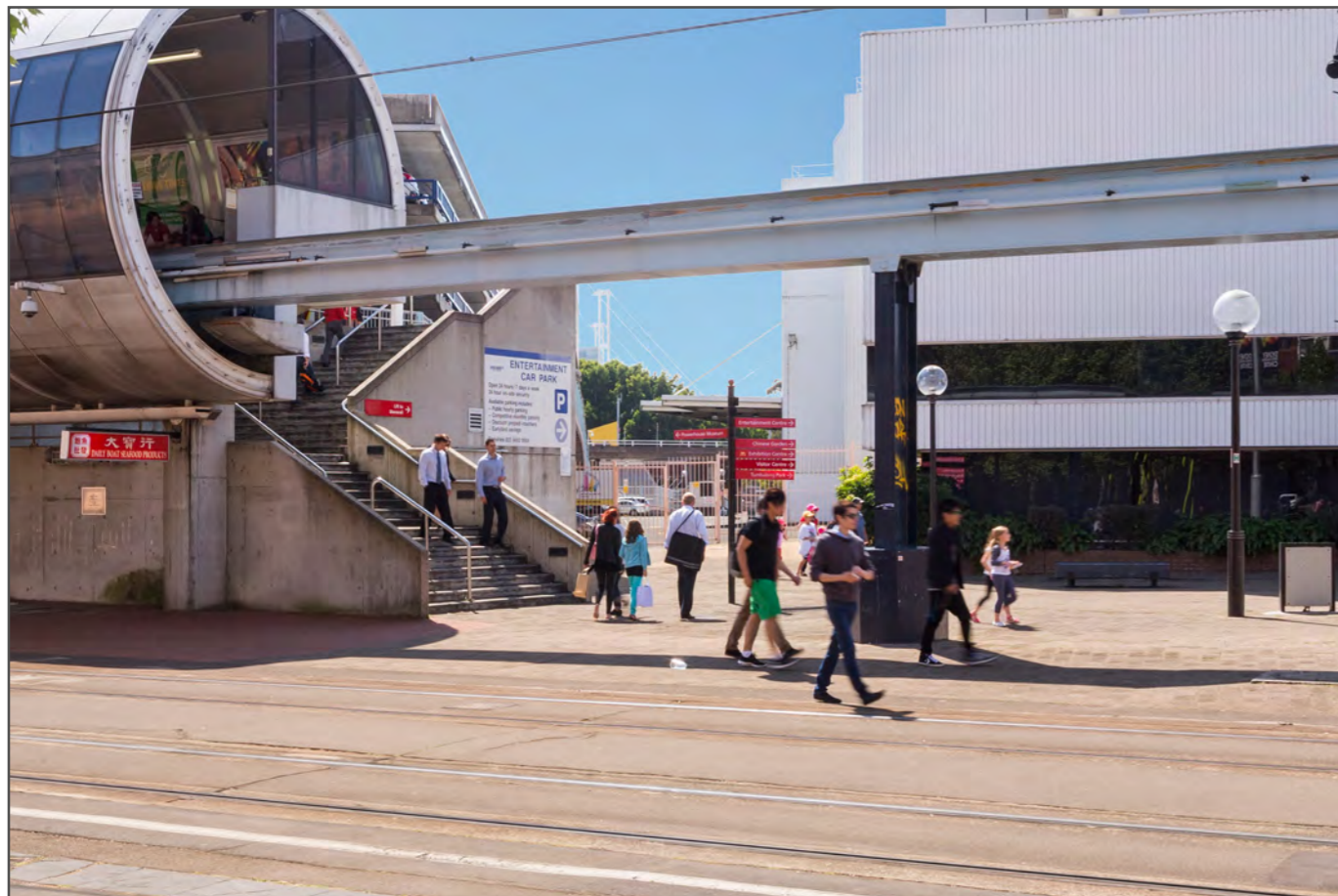
50mm



24mm - Original Image



24mm



50mm - Original Image



50mm



24mm - Original Image



24mm



50mm - Original Image



50mm



25mm - Original Image



25mm



50mm - Original Image



50mm



24mm - Original Image



24mm



50mm - Original Image



50mm



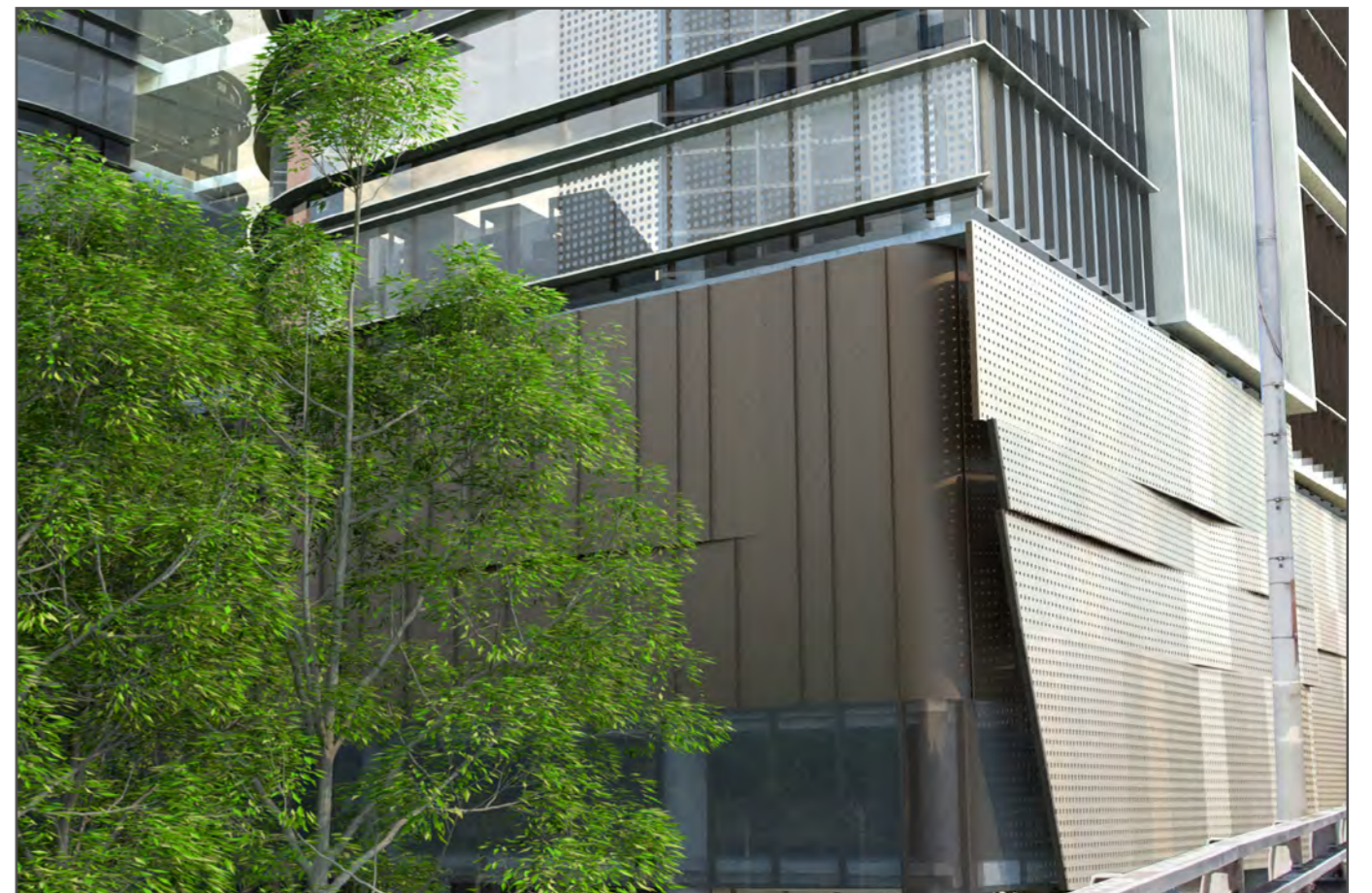
20mm - Original Image



20mm



50mm - Original Image



50mm



17mm - Original Image



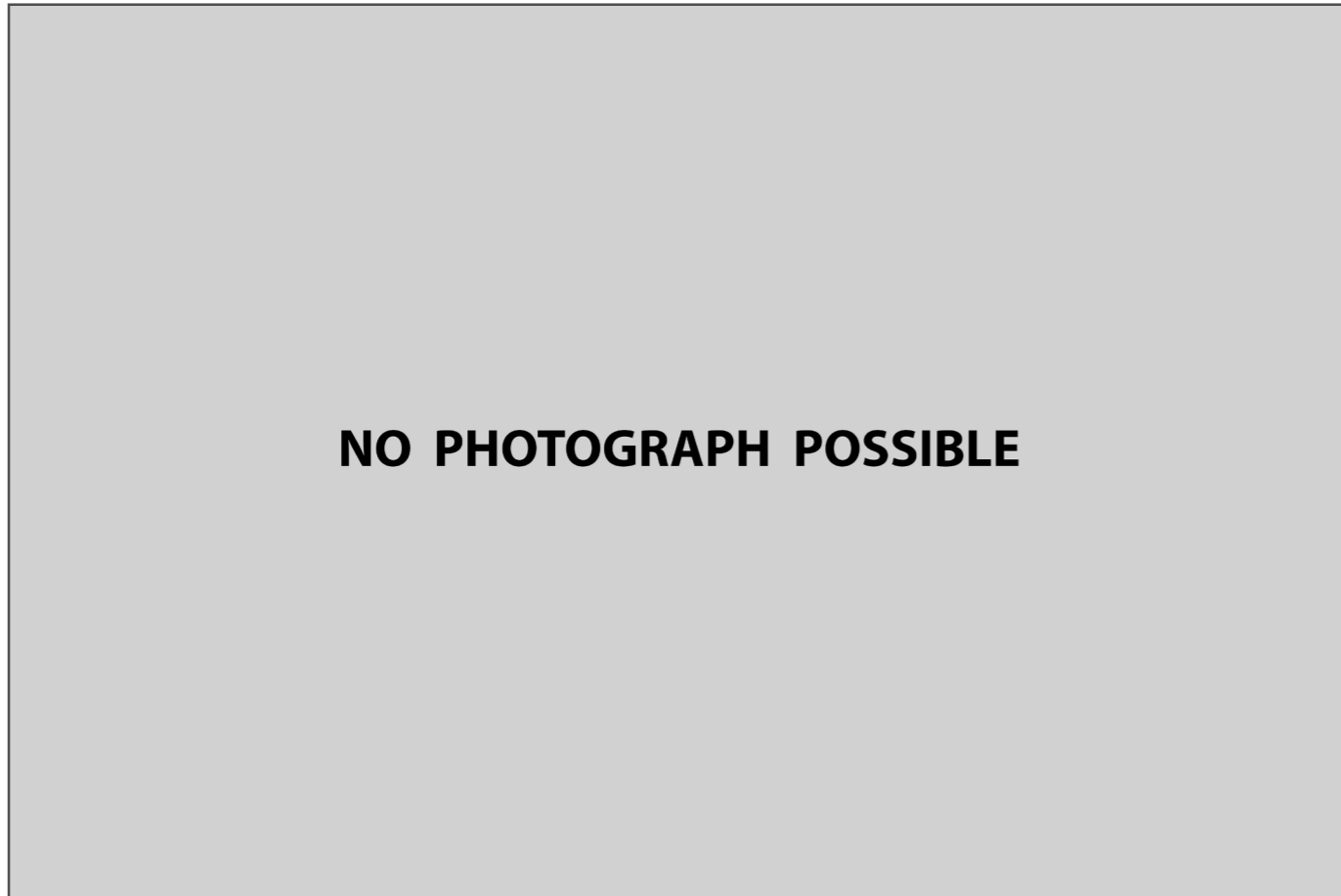
17mm



50mm - Original Image



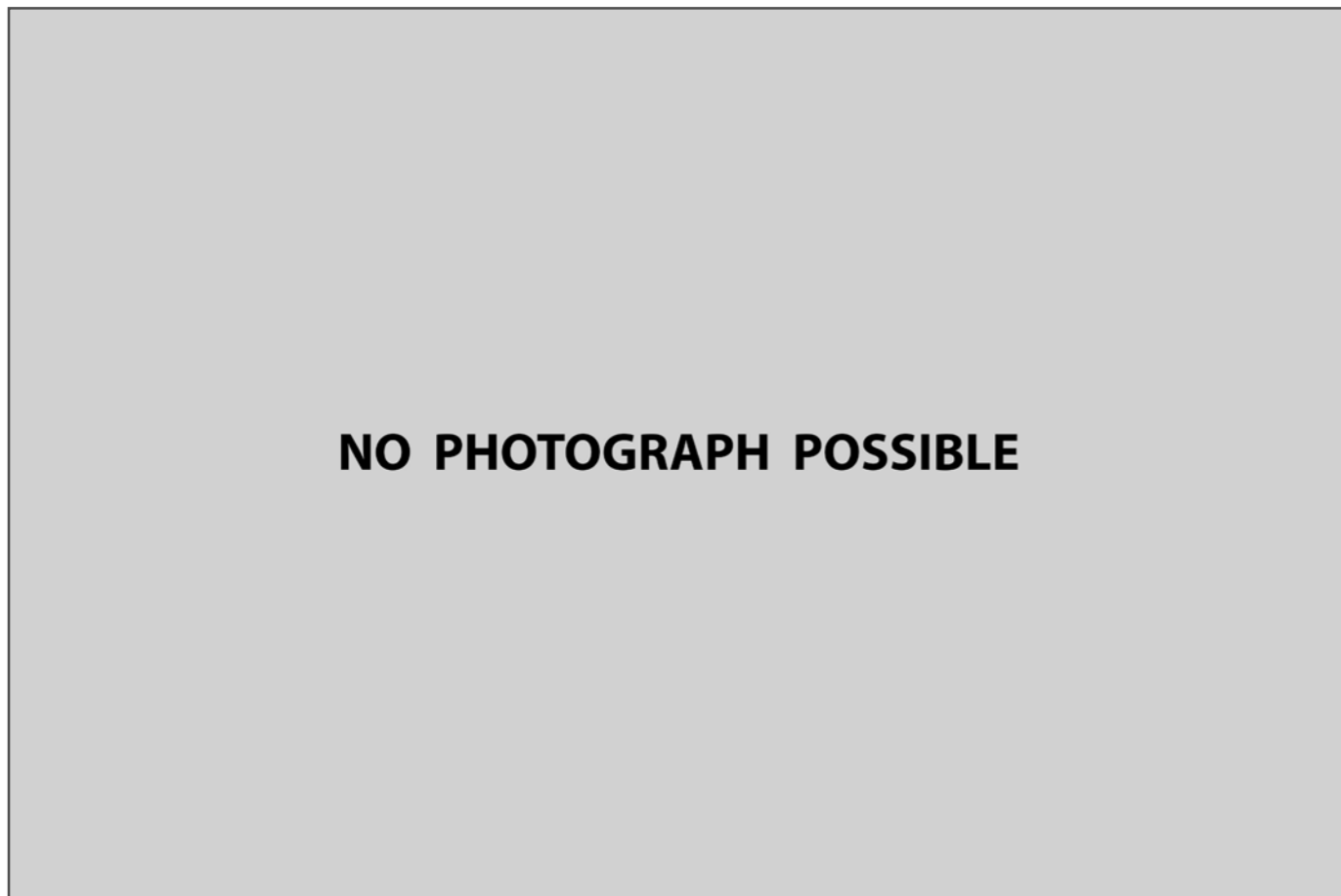
50mm



24mm - Original Image



24mm



50mm - Original Image



50mm

Peak Apartments

Position: P1A




Level: 45

RL: 140.975 (Camera Height)

FOR INFORMATION ONLY

These images have been produced for view analysis purposes only.
Proposed outer parameters for built form ("parameter boxes") shown form part of State Significant Development Application SSD 5878 (Concept Proposal) and do not form part of this development application.
Building forms shown include those approved as part of State Significant Development Applications SSD5752 (ICC Core Facilities), SSD 6116 (ICC Hotel), SSD6011 (SW Plot residential mixed use development), and SSD6010 (Student Accommodation development) as well as the proposed SSD 6626 (NE Plot residential mixed use development) which is currently being assessed.

LEGEND: 1

-  Key Building
-  View Direction (50mm Camera)
-  Parameter Boxes in the Haymarket Precinct



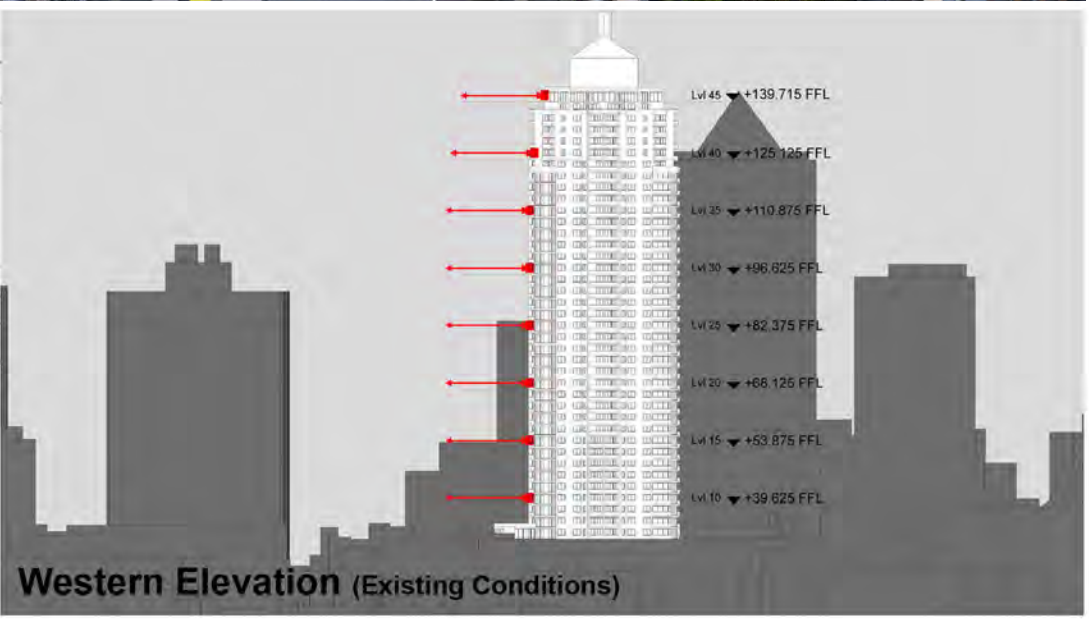
Existing View



Proposed View



Plan (Existing Conditions)



Western Elevation (Existing Conditions)

Peak Apartments




Position: P1A

Level: 40

RL: 126.725 (Camera Height)

FOR INFORMATION ONLY

These images have been produced for view analysis purposes only.
Proposed outer parameters for built form ("parameter boxes") shown form part of State Significant Development Application SSD 5878 (Concept Proposal) and do not form part of this development application.
Building forms shown include those approved as part of State Significant Development Applications SSD5752 (ICC Core Facilities), SSD 6116 (ICC Hotel), SSD6011 (SW Plot residential mixed use development), and SSD6010 (Student Accommodation development) as well as the proposed SSD 6626 (NE Plot residential mixed use development) which is currently being assessed.

LEGEND:	2
 Key Building	
 View Direction (50mm Camera)	
 Parameter Boxes in the Haymarket Precinct	



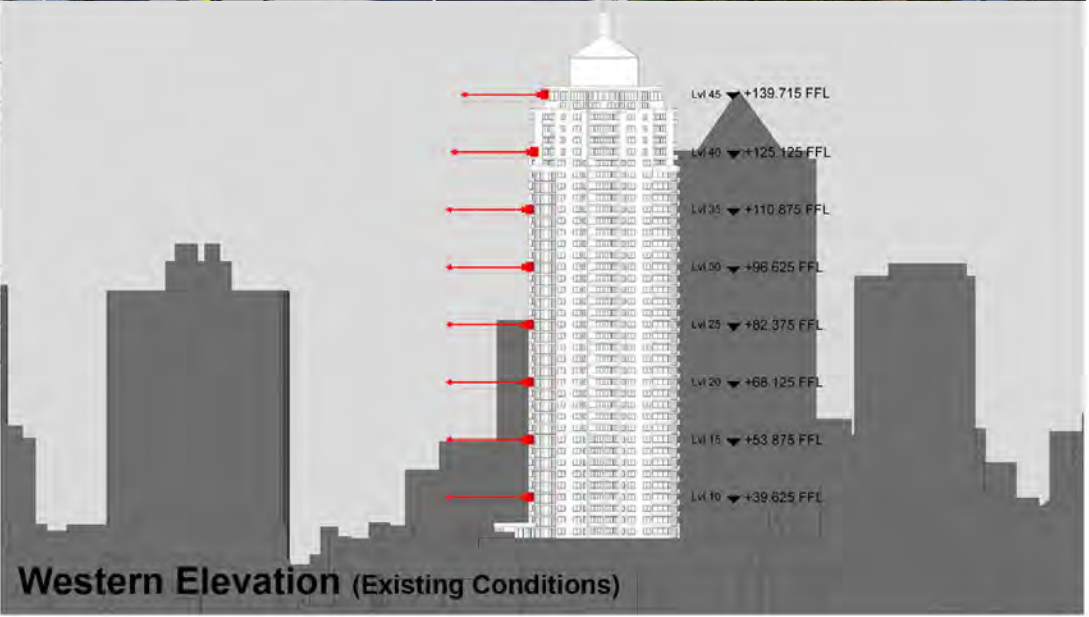
Existing View



Proposed View



Plan (Existing Conditions)



Western Elevation (Existing Conditions)

Peak Apartments




Position: P1A

Level: 35

RL: 112.475 (Camera Height)

FOR INFORMATION ONLY

These images have been produced for view analysis purposes only.
Proposed outer parameters for built form ("parameter boxes") shown form part of State Significant Development Application SSD 5878 (Concept Proposal) and do not form part of this development application.
Building forms shown include those approved as part of State Significant Development Applications SSD5752 (ICC Core Facilities), SSD 6116 (ICC Hotel), SSD6011 (SW Plot residential mixed use development), and SSD6010 (Student Accommodation development) as well as the proposed SSD 6626 (NE Plot residential mixed use development) which is currently being assessed.

LEGEND:		3
	Key Building	
	View Direction (50mm Camera)	
	Parameter Boxes in the Haymarket Precinct	



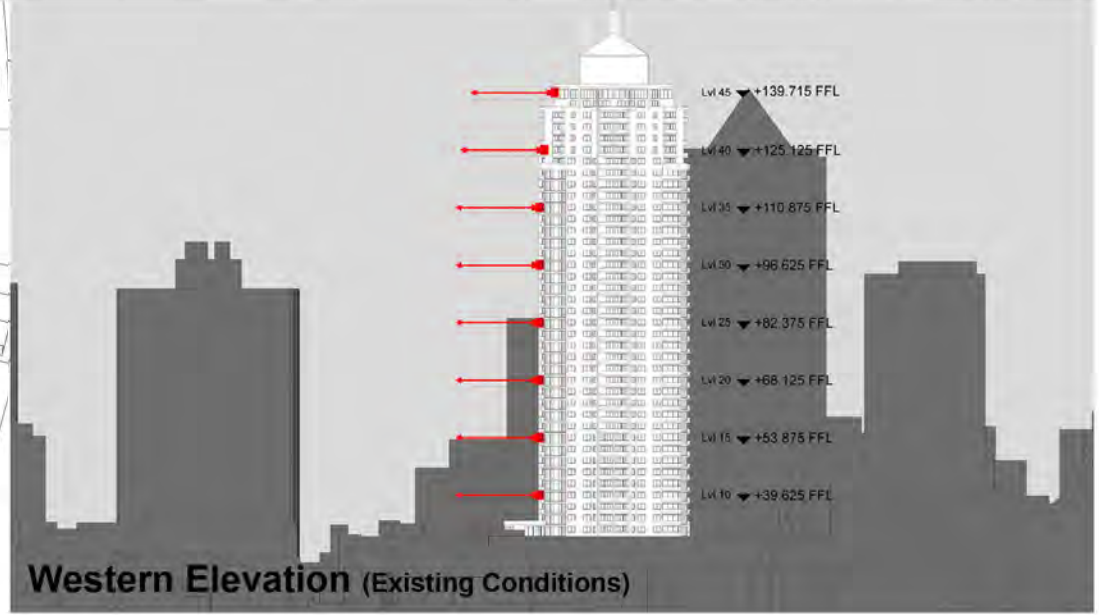
Existing View



Proposed View



Plan (Existing Conditions)



Western Elevation (Existing Conditions)

Peak Apartments

Position: P1A

Level: 30

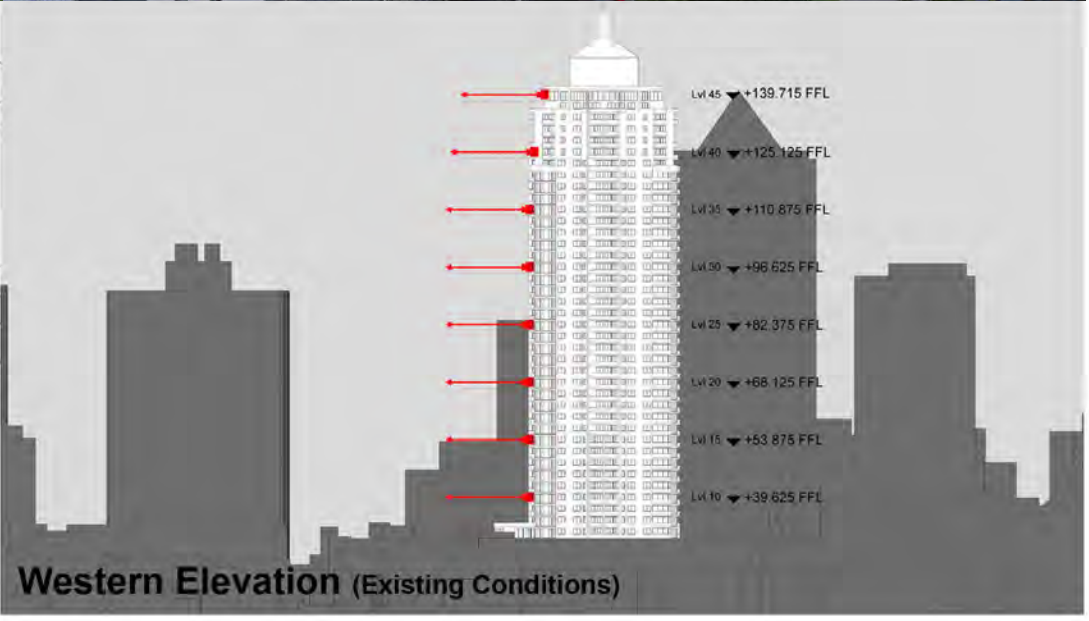
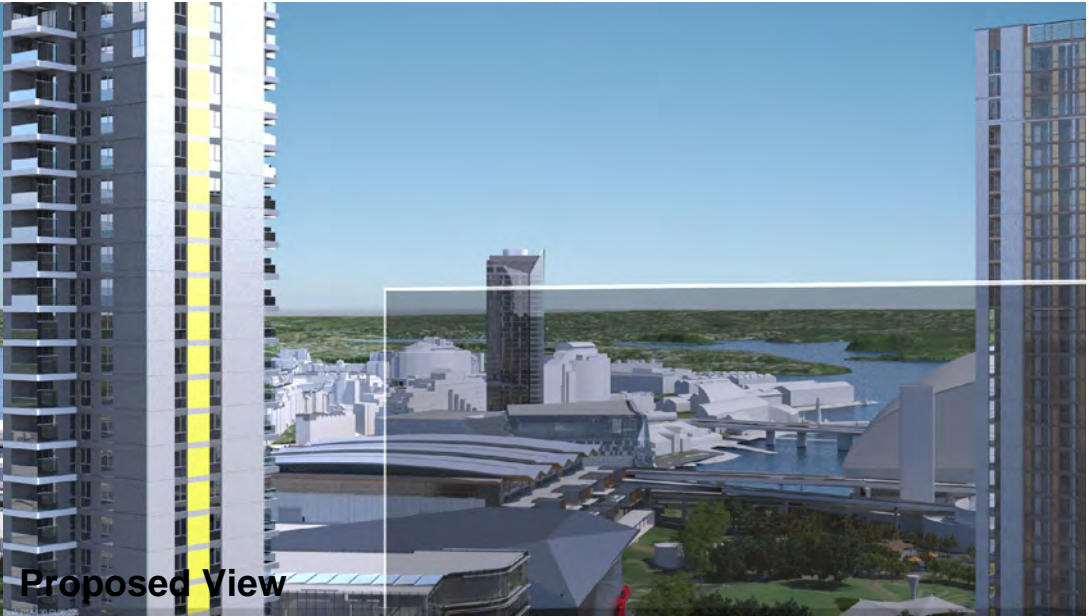
RL: 98.225 (Camera Height)

FOR INFORMATION ONLY

These images have been produced for view analysis purposes only.
Proposed outer parameters for built form ("parameter boxes") shown form part of State Significant Development Application SSD 5878 (Concept Proposal) and do not form part of this development application.
Building forms shown include those approved as part of State Significant Development Applications SSD5752 (ICC Core Facilities), SSD 6116 (ICC Hotel), SSD6011 (SW Plot residential mixed use development), and SSD6010 (Student Accommodation development) as well as the proposed SSD 6626 (NE Plot residential mixed use development) which is currently being assessed.

LEGEND: 4

- Key Building
- View Direction (50mm Camera)
- Parameter Boxes in the Haymarket Precinct



Peak Apartments

Position: P1A

Level: 25

RL: 83.975 (Camera Height)

FOR INFORMATION ONLY

These images have been produced for view analysis purposes only.
 Proposed outer parameters for built form ("parameter boxes") shown form part of State Significant Development Application SSD 5878 (Concept Proposal) and do not form part of this development application.
 Building forms shown include those approved as part of State Significant Development Applications SSD5752 (ICC Core Facilities), SSD 6116 (ICC Hotel), SSD6011 (SW Plot residential mixed use development), and SSD6010 (Student Accomodation development) as well as the proposed SSD 6626 (NE Plot residential mixed use development) which is currently being assessed.

LEGEND: 5

- Key Building
- View Direction (50mm Camera)
- Parameter Boxes in the Haymarket Precinct

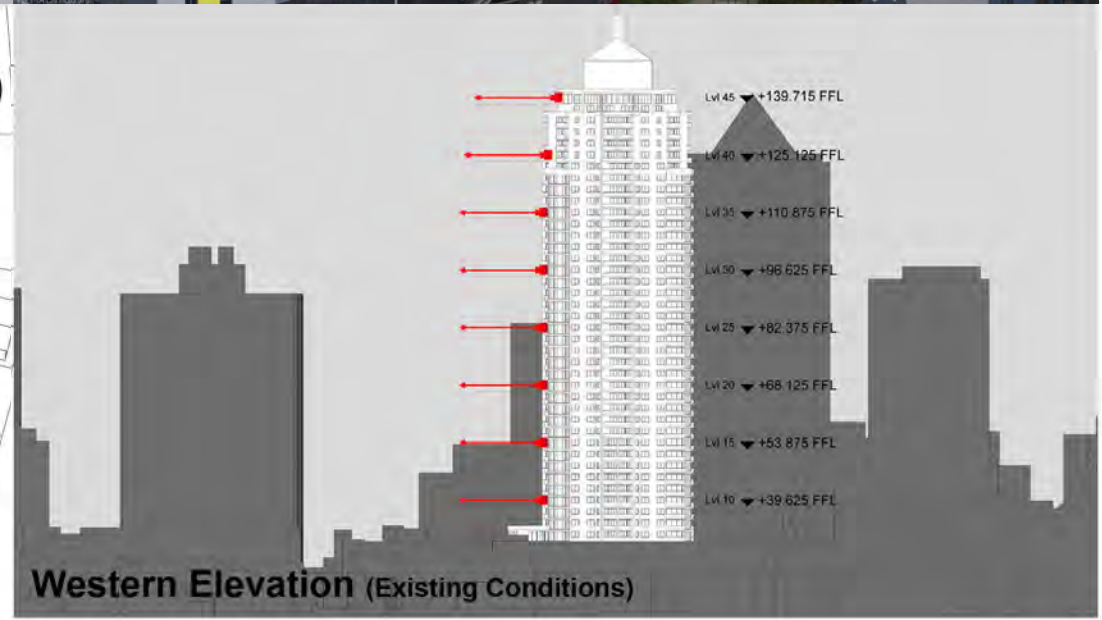


Existing View

Proposed View



Plan (Existing Conditions)



Western Elevation (Existing Conditions)

Peak Apartments

Position: P1A

Level: 20

RL: 69.725 (Camera Height)

FOR INFORMATION ONLY

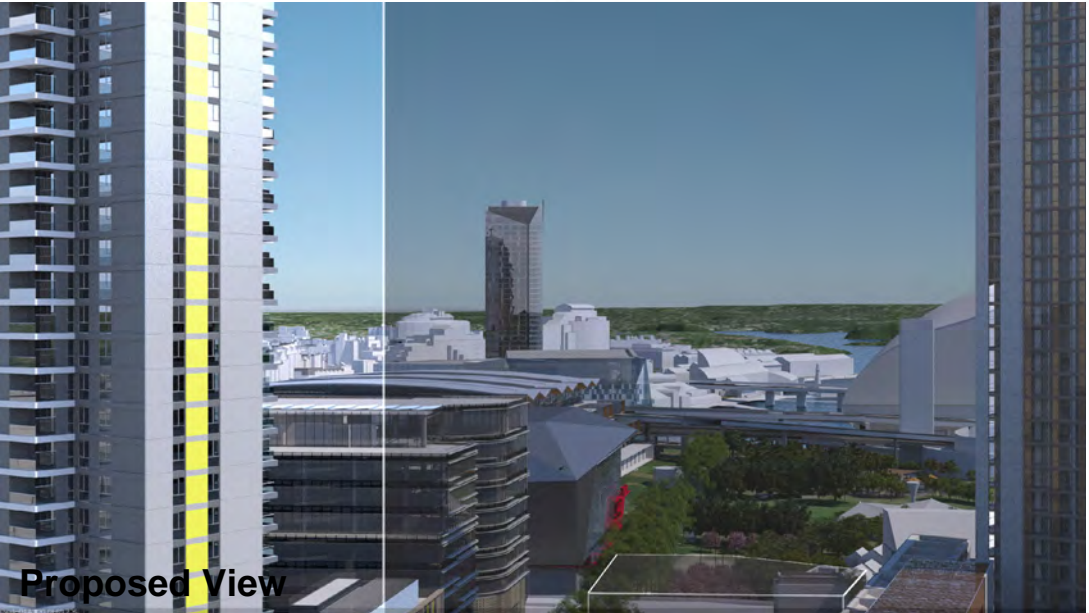
These images have been produced for view analysis purposes only.
Proposed outer parameters for built form ("parameter boxes") shown form part of State Significant Development Application SSD 5878 (Concept Proposal) and do not form part of this development application.
Building forms shown include those approved as part of State Significant Development Applications SSD5752 (ICC Core Facilities), SSD 6116 (ICC Hotel), SSD6011 (SW Plot residential mixed use development), and SSD6010 (Student Accommodation development) as well as the proposed SSD 6626 (NE Plot residential mixed use development) which is currently being assessed.

LEGEND: 6

- Key Building
- View Direction (50mm Camera)
- Parameter Boxes in the Haymarket Precinct



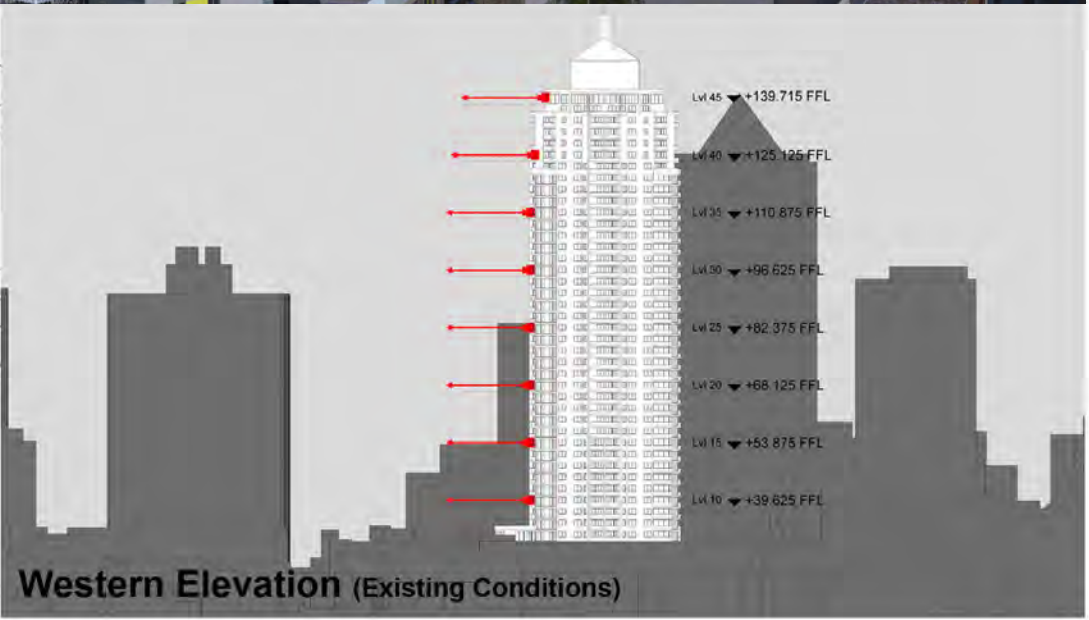
Existing View



Proposed View



Plan (Existing Conditions)



Western Elevation (Existing Conditions)

Peak Apartments

Position: P1A

Level: 15

RL: 55.475 (Camera Height)

FOR INFORMATION ONLY

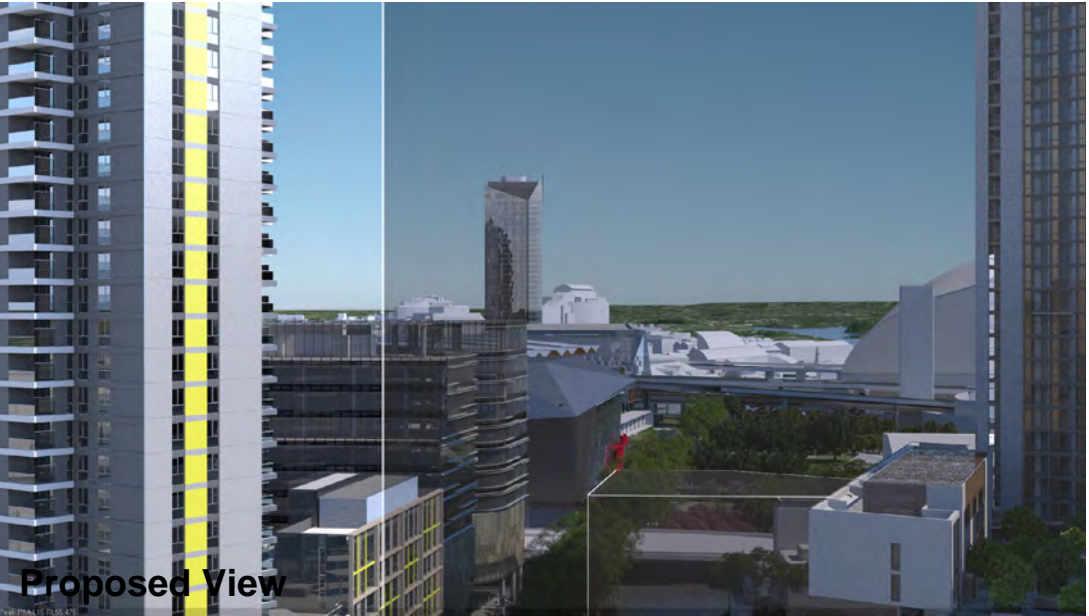
These images have been produced for view analysis purposes only.
 Proposed outer parameters for built form ("parameter boxes") shown form part of State Significant Development Application SSD 5878 (Concept Proposal) and do not form part of this development application.
 Building forms shown include those approved as part of State Significant Development Applications SSD5752 (ICC Core Facilities), SSD 6116 (ICC Hotel), SSD6011 (SW Plot residential mixed use development), and SSD6010 (Student Accommodation development) as well as the proposed SSD 6626 (NE Plot residential mixed use development) which is currently being assessed.

LEGEND: 7

- Key Building
- View Direction (50mm Camera)
- Parameter Boxes in the Haymarket Precinct



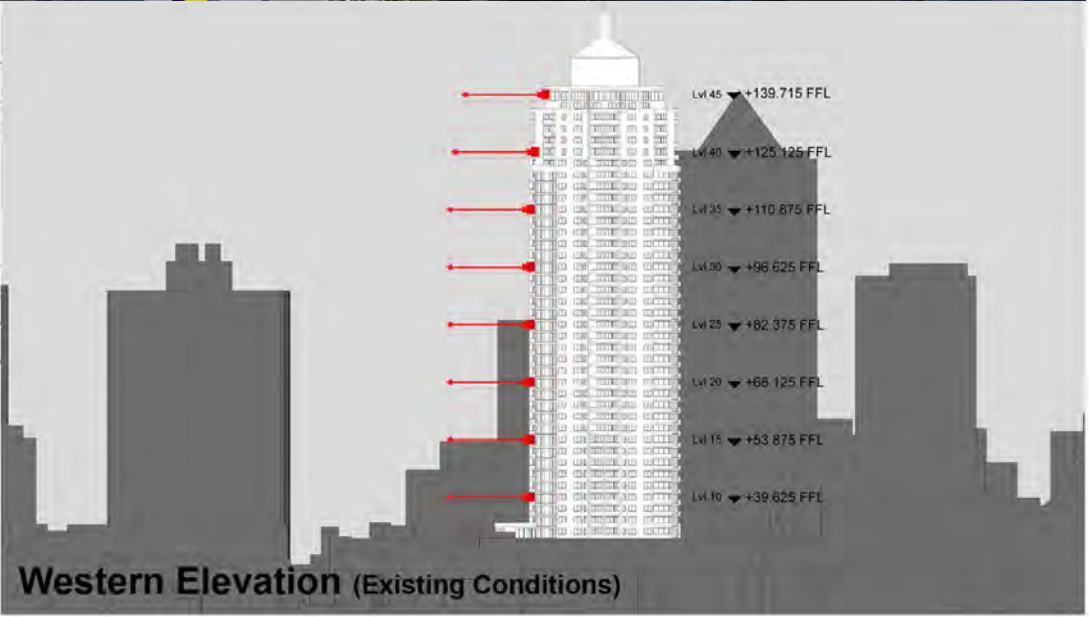
Existing View



Proposed View



Plan (Existing Conditions)



Western Elevation (Existing Conditions)

Peak Apartments

Position: P1A

Level: 10

RL: 41.225 (Camera Height)

FOR INFORMATION ONLY

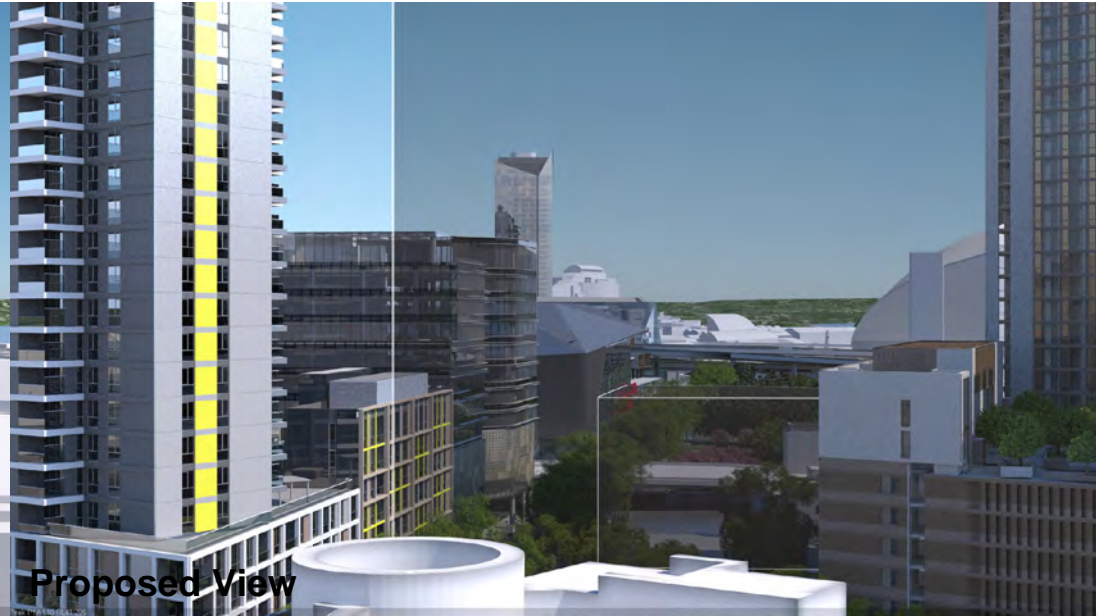
These images have been produced for view analysis purposes only.
Proposed outer parameters for built form ("parameter boxes") shown form part of State Significant Development Application SSD 5878 (Concept Proposal) and do not form part of this development application.
Building forms shown include those approved as part of State Significant Development Applications SSD5752 (ICC Core Facilities), SSD 6116 (ICC Hotel), SSD6011 (SW Plot residential mixed use development), and SSD6010 (Student Accommodation development) as well as the proposed SSD 6626 (NE Plot residential mixed use development) which is currently being assessed.

LEGEND: 8

- Key Building
- View Direction (50mm Camera)
- Parameter Boxes in the Haymarket Precinct



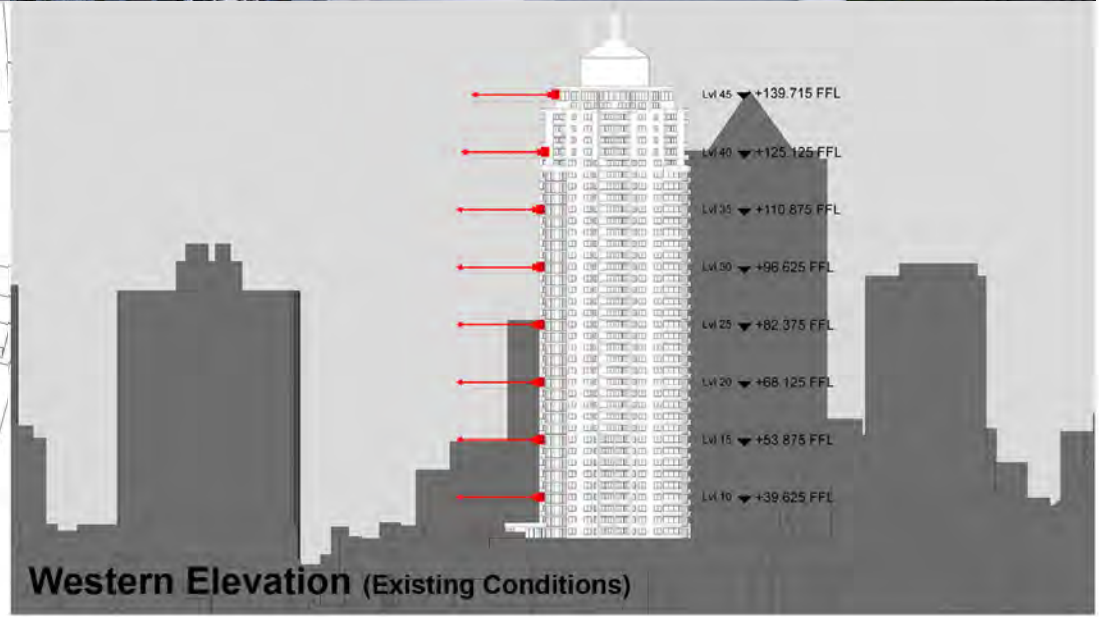
Existing View



Proposed View



Plan (Existing Conditions)



Western Elevation (Existing Conditions)

Peak Apartments

Position: P1B




Level: 45

RL: 140.975 (Camera Height)

FOR INFORMATION ONLY

These images have been produced for view analysis purposes only.
Proposed outer parameters for built form ("parameter boxes") shown form part of State Significant Development Application SSD 5878 (Concept Proposal) and do not form part of this development application.
Building forms shown include those approved as part of State Significant Development Applications SSD5752 (ICC Core Facilities), SSD 6116 (ICC Hotel), SSD6011 (SW Plot residential mixed use development), and SSD6010 (Student Accommodation development) as well as the proposed SSD 6626 (NE Plot residential mixed use development) which is currently being assessed.

LEGEND: 9

-  Key Building
-  View Direction (50mm Camera)
-  Parameter Boxes in the Haymarket Precinct

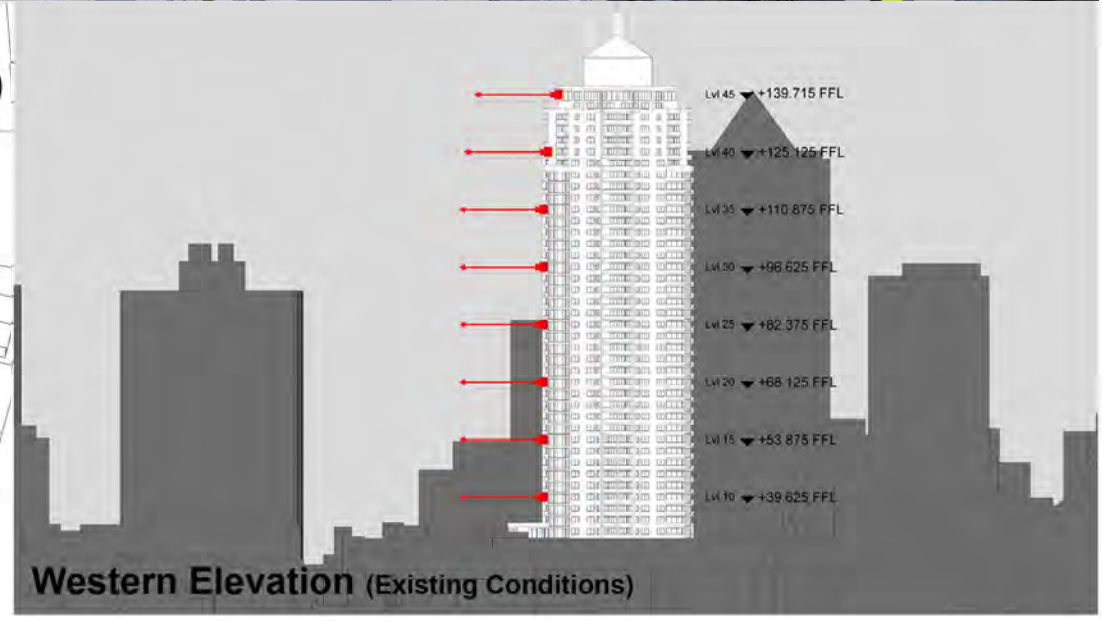


Existing View

Proposed View



Plan (Existing Conditions)



Western Elevation (Existing Conditions)

Peak Apartments

Position: P1B




Level: 40

RL: 126.725 (Camera Height)

FOR INFORMATION ONLY

These images have been produced for view analysis purposes only.
Proposed outer parameters for built form ("parameter boxes") shown form part of State Significant Development Application SSD 5878 (Concept Proposal) and do not form part of this development application.
Building forms shown include those approved as part of State Significant Development Applications SSD5752 (ICC Core Facilities), SSD 6116 (ICC Hotel), SSD6011 (SW Plot residential mixed use development), and SSD6010 (Student Accommodation development) as well as the proposed SSD 6626 (NE Plot residential mixed use development) which is currently being assessed.

LEGEND: 10

-  Key Building
-  View Direction (50mm Camera)
-  Parameter Boxes in the Haymarket Precinct

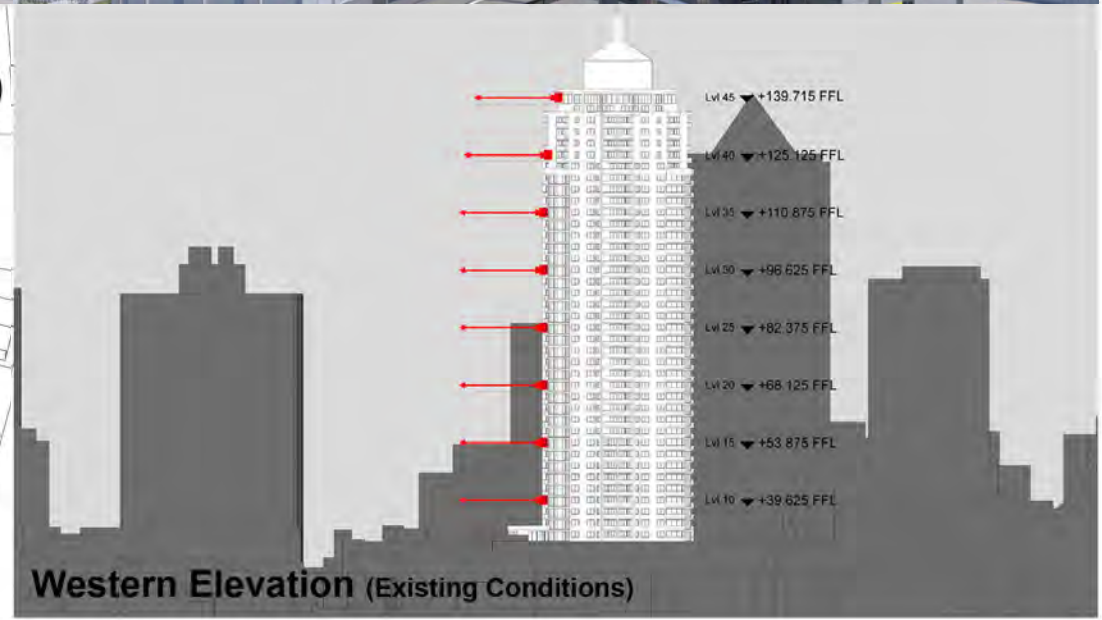


Existing View

Proposed View



Plan (Existing Conditions)



Western Elevation (Existing Conditions)

Peak Apartments

Position: P1B

Level: 35

RL: 112.475 (Camera Height)

FOR INFORMATION ONLY

These images have been produced for view analysis purposes only.
Proposed outer parameters for built form ("parameter boxes") shown form part of State Significant Development Application SSD 5878 (Concept Proposal) and do not form part of this development application.
Building forms shown include those approved as part of State Significant Development Applications SSD5752 (ICC Core Facilities), SSD 6116 (ICC Hotel), SSD6011 (SW Plot residential mixed use development), and SSD6010 (Student Accommodation development) as well as the proposed SSD 6626 (NE Plot residential mixed use development) which is currently being assessed.

LEGEND: 11

- Key Building
- View Direction (50mm Camera)
- Parameter Boxes in the Haymarket Precinct

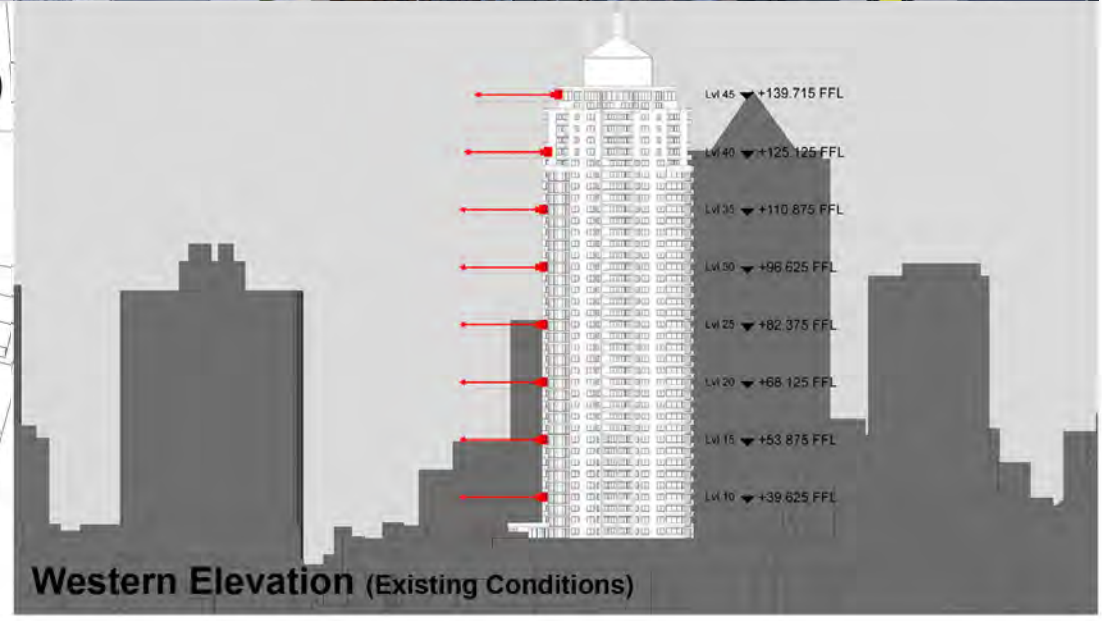


Existing View

Proposed View



Plan (Existing Conditions)



Western Elevation (Existing Conditions)

Peak Apartments

Position: P1B

Level: 30

RL: 98.225 (Camera Height)

FOR INFORMATION ONLY

These images have been produced for view analysis purposes only.
Proposed outer parameters for built form ("parameter boxes") shown form part of State Significant Development Application SSD 5878 (Concept Proposal) and do not form part of this development application. Building forms shown include those approved as part of State Significant Development Applications SSD5752 (ICC Core Facilities), SSD 6116 (ICC Hotel), SSD6011 (SW Plot residential mixed use development), and SSD6010 (Student Accommodation development) as well as the proposed SSD 6626 (NE Plot residential mixed use development) which is currently being assessed.

LEGEND: 12

- Key Building
- View Direction (50mm Camera)
- Parameter Boxes in the Haymarket Precinct

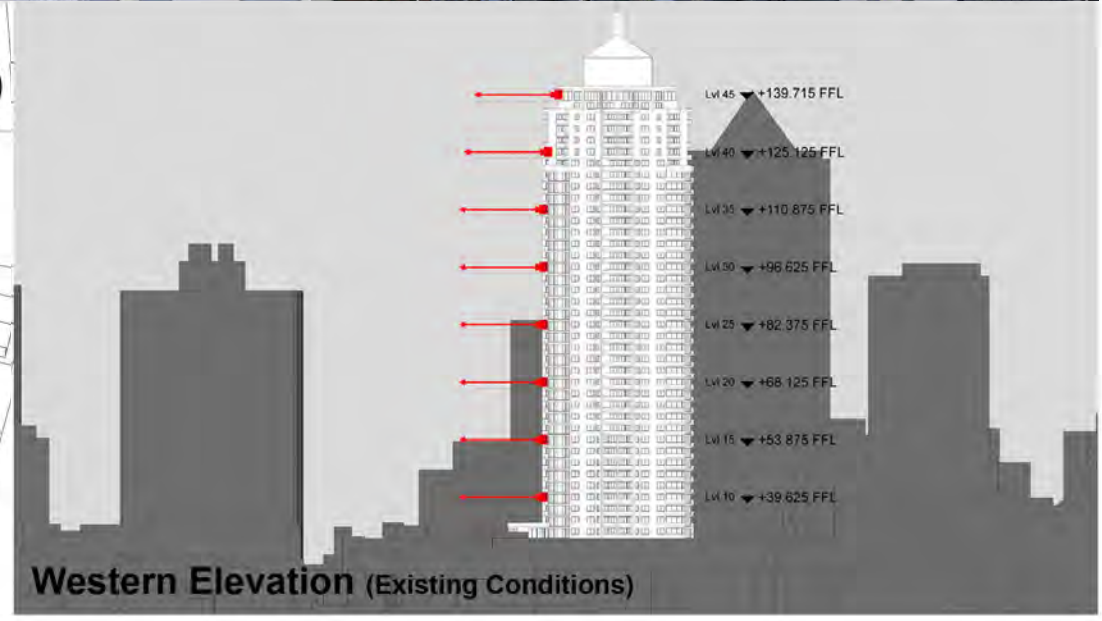


Existing View

Proposed View



Plan (Existing Conditions)



Western Elevation (Existing Conditions)

Peak Apartments

Position: P1B




Level: 25

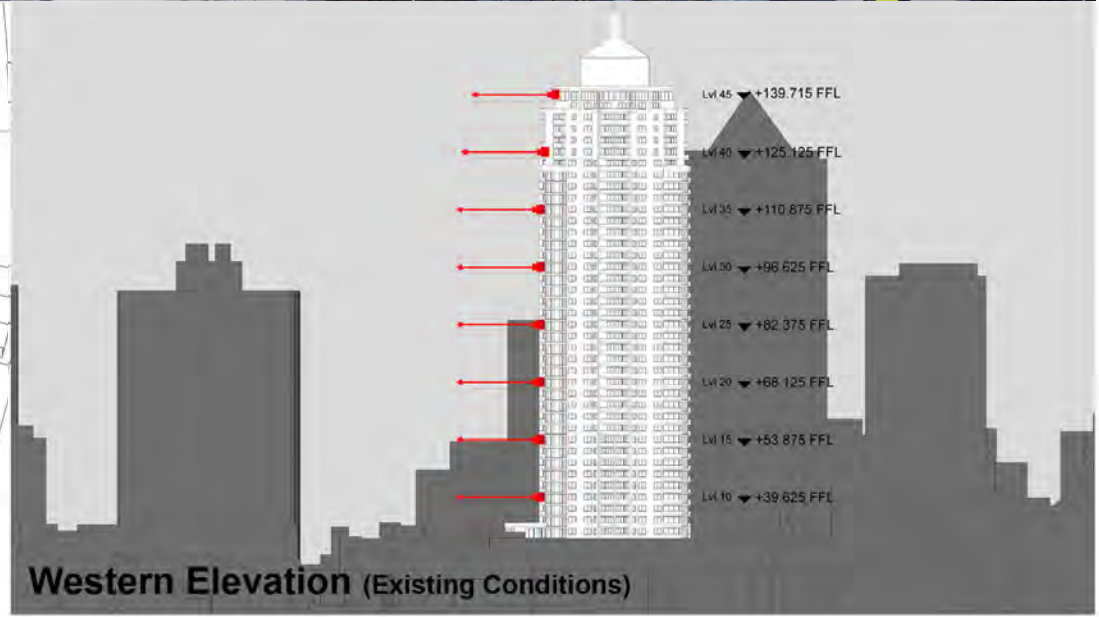
RL: 83.975 (Camera Height)

FOR INFORMATION ONLY

These images have been produced for view analysis purposes only.
Proposed outer parameters for built form ("parameter boxes") shown form part of State Significant Development Application SSD 5878 (Concept Proposal) and do not form part of this development application.
Building forms shown include those approved as part of State Significant Development Applications SSD5752 (ICC Core Facilities), SSD 6116 (ICC Hotel), SSD6011 (SW Plot residential mixed use development), and SSD6010 (Student Accommodation development) as well as the proposed SSD 6626 (NE Plot residential mixed use development) which is currently being assessed.

LEGEND: 13

-  Key Building
-  View Direction (50mm Camera)
-  Parameter Boxes in the Haymarket Precinct



Peak Apartments

Position: P1B

Level: 20

RL: 69.725 (Camera Height)

FOR INFORMATION ONLY

These images have been produced for view analysis purposes only.
Proposed outer parameters for built form ("parameter boxes") shown form part of State Significant Development Application SSD 5878 (Concept Proposal) and do not form part of this development application.
Building forms shown include those approved as part of State Significant Development Applications SSD5752 (ICC Core Facilities), SSD 6116 (ICC Hotel), SSD6011 (SW Plot residential mixed use development), and SSD6010 (Student Accommodation development) as well as the proposed SSD 6626 (NE Plot residential mixed use development) which is currently being assessed.

LEGEND: 14

- Key Building
- View Direction (50mm Camera)
- Parameter Boxes in the Haymarket Precinct



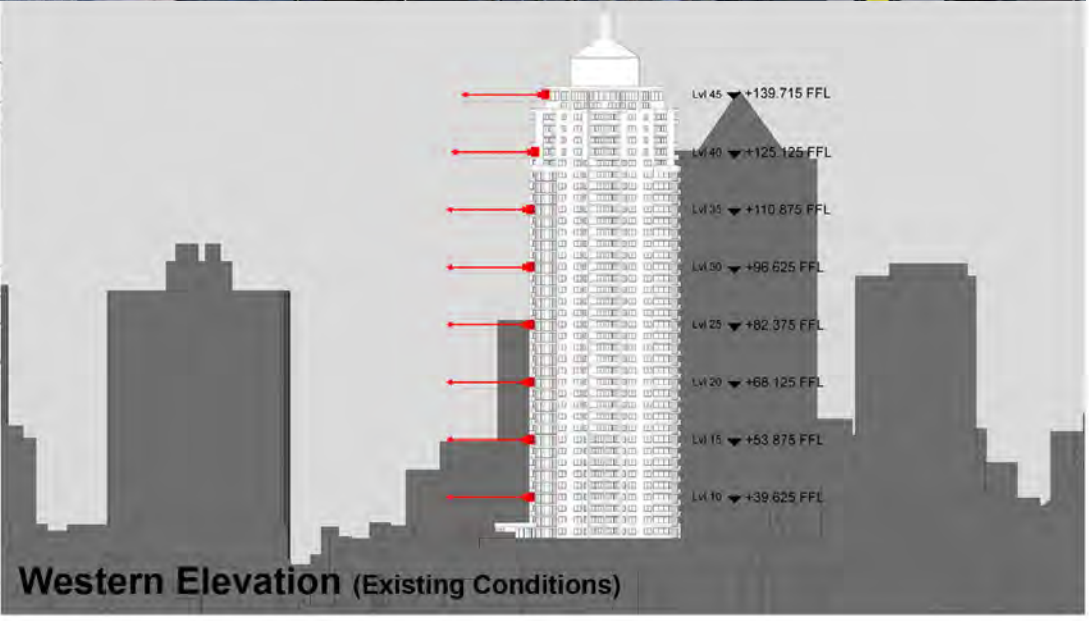
Existing View



Proposed View



Plan (Existing Conditions)



Western Elevation (Existing Conditions)

Peak Apartments

Position: P1B

Level: 15

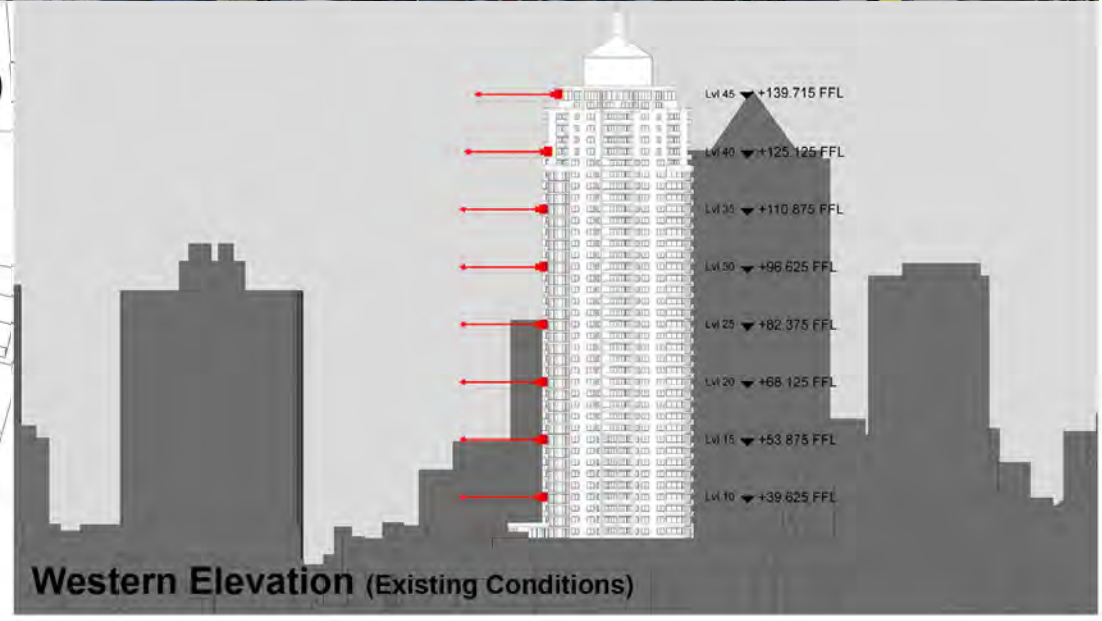
RL: 55.475 (Camera Height)

FOR INFORMATION ONLY

These images have been produced for view analysis purposes only.
Proposed outer parameters for built form ("parameter boxes") shown form part of State Significant Development Application SSD 5878 (Concept Proposal) and do not form part of this development application.
Building forms shown include those approved as part of State Significant Development Applications SSD5752 (ICC Core Facilities), SSD 6116 (ICC Hotel), SSD6011 (SW Plot residential mixed use development), and SSD6010 (Student Accommodation development) as well as the proposed SSD 6626 (NE Plot residential mixed use development) which is currently being assessed.

LEGEND: 15

- Key Building
- ← View Direction (50mm Camera)
- Parameter Boxes in the Haymarket Precinct



Plan (Existing Conditions)

Western Elevation (Existing Conditions)

Peak Apartments

Position: P1B

Level: 10

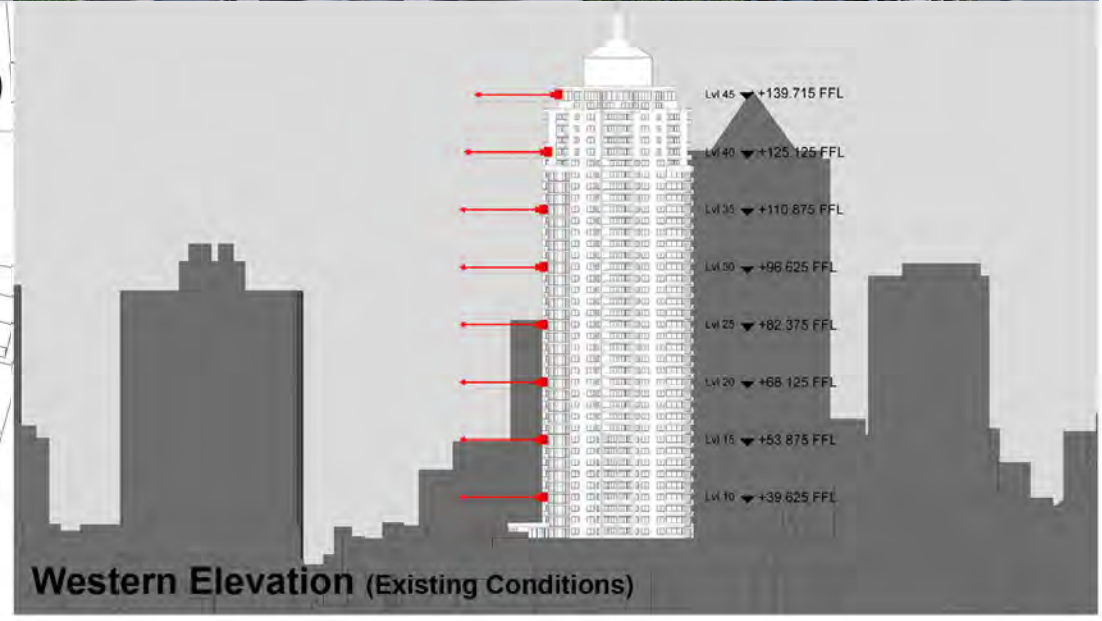
RL: 41.225 (Camera Height)

FOR INFORMATION ONLY

These images have been produced for view analysis purposes only.
Proposed outer parameters for built form ("parameter boxes") shown form part of State Significant Development Application SSD 5878 (Concept Proposal) and do not form part of this development application.
Building forms shown include those approved as part of State Significant Development Applications SSD5752 (ICC Core Facilities), SSD 6116 (ICC Hotel), SSD6011 (SW Plot residential mixed use development), and SSD6010 (Student Accommodation development) as well as the proposed SSD 6626 (NE Plot residential mixed use development) which is currently being assessed.

LEGEND: 16

- Key Building
- View Direction (50mm Camera)
- Parameter Boxes in the Haymarket Precinct



Plan (Existing Conditions)

Western Elevation (Existing Conditions)

Peak Apartments




Position: P2B

Level: 45

RL: 140.975 (Camera Height)

FOR INFORMATION ONLY

These images have been produced for view analysis purposes only.
 Proposed outer parameters for built form ("parameter boxes") shown form part of State Significant Development Application SSD 5878 (Concept Proposal) and do not form part of this development application.
 Building forms shown include those approved as part of State Significant Development Applications SSD5752 (ICC Core Facilities), SSD 6116 (ICC Hotel), SSD6011 (SW Plot residential mixed use development), and SSD6010 (Student Accommodation development) as well as the proposed SSD 6626 (NE Plot residential mixed use development) which is currently being assessed.

LEGEND:		17
	Key Building	
	View Direction (50mm Camera)	
	Parameter Boxes in the Haymarket Precinct	

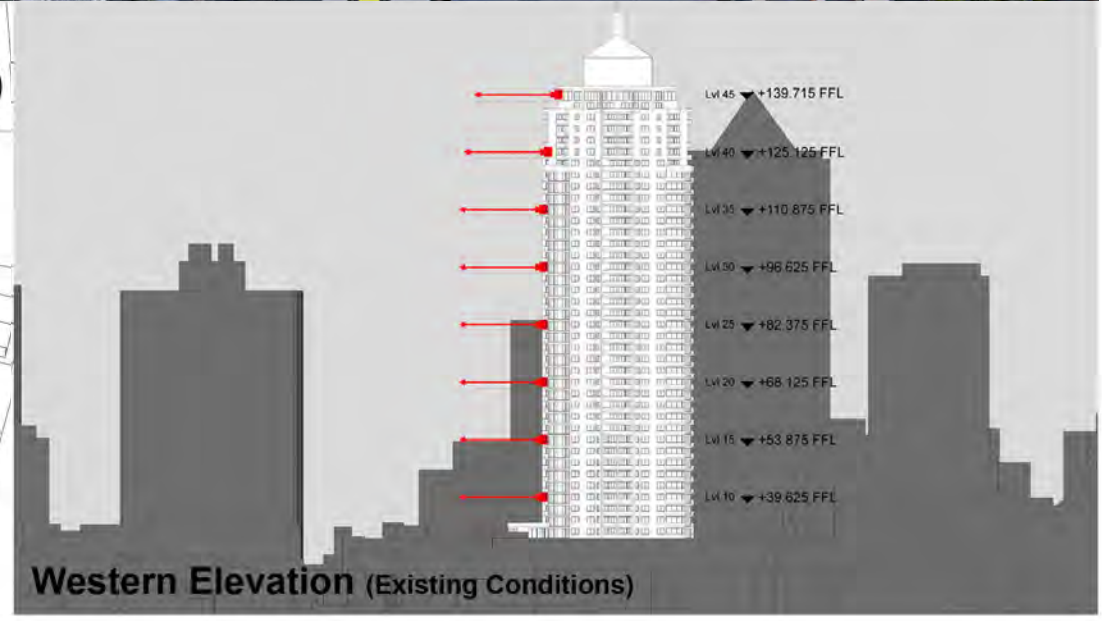


Existing View

Proposed View



Plan (Existing Conditions)



Western Elevation (Existing Conditions)

Peak Apartments

Position: P2B




Level: 40

RL: 126.725 (Camera Height)

FOR INFORMATION ONLY

These images have been produced for view analysis purposes only.
Proposed outer parameters for built form ("parameter boxes") shown form part of State Significant Development Application SSD 5878 (Concept Proposal) and do not form part of this development application.
Building forms shown include those approved as part of State Significant Development Applications SSD5752 (ICC Core Facilities), SSD 6116 (ICC Hotel), SSD6011 (SW Plot residential mixed use development), and SSD6010 (Student Accommodation development) as well as the proposed SSD 6626 (NE Plot residential mixed use development) which is currently being assessed.

LEGEND: 18

-  Key Building
-  View Direction (50mm Camera)
-  Parameter Boxes in the Haymarket Precinct



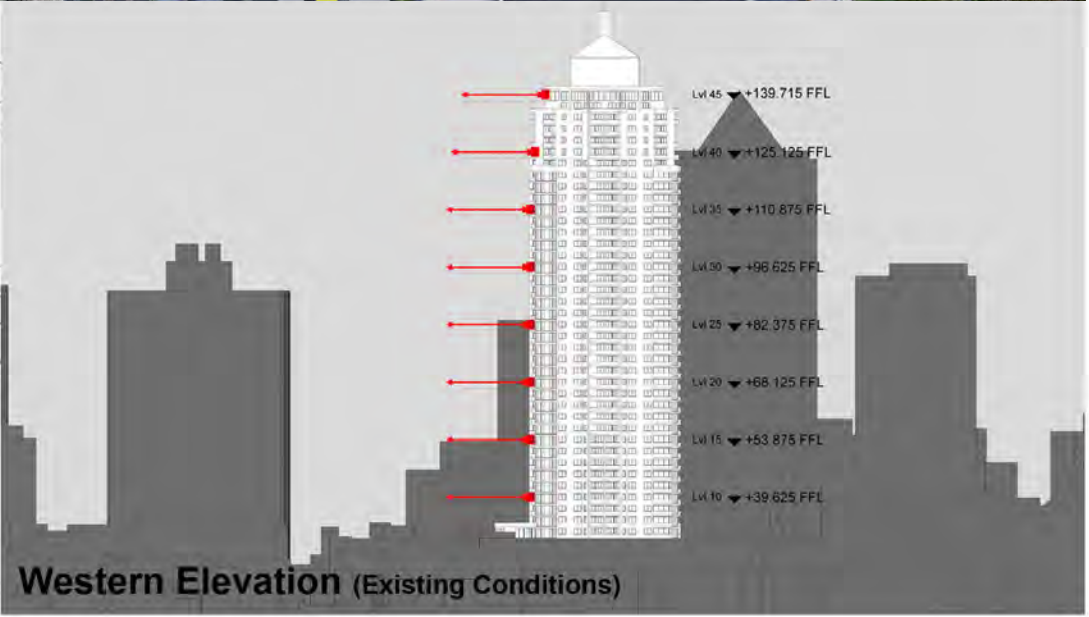
Existing View



Proposed View



Plan (Existing Conditions)



Western Elevation (Existing Conditions)

Peak Apartments




Position: P2B

Level: 35

RL: 112.475 (Camera Height)

FOR INFORMATION ONLY

These images have been produced for view analysis purposes only.
Proposed outer parameters for built form ("parameter boxes") shown form part of State Significant Development Application SSD 5878 (Concept Proposal) and do not form part of this development application.
Building forms shown include those approved as part of State Significant Development Applications SSD5752 (ICC Core Facilities), SSD 6116 (ICC Hotel), SSD6011 (SW Plot residential mixed use development), and SSD6010 (Student Accommodation development) as well as the proposed SSD 6626 (NE Plot residential mixed use development) which is currently being assessed.

LEGEND:		19
	Key Building	
	View Direction (50mm Camera)	
	Parameter Boxes in the Haymarket Precinct	



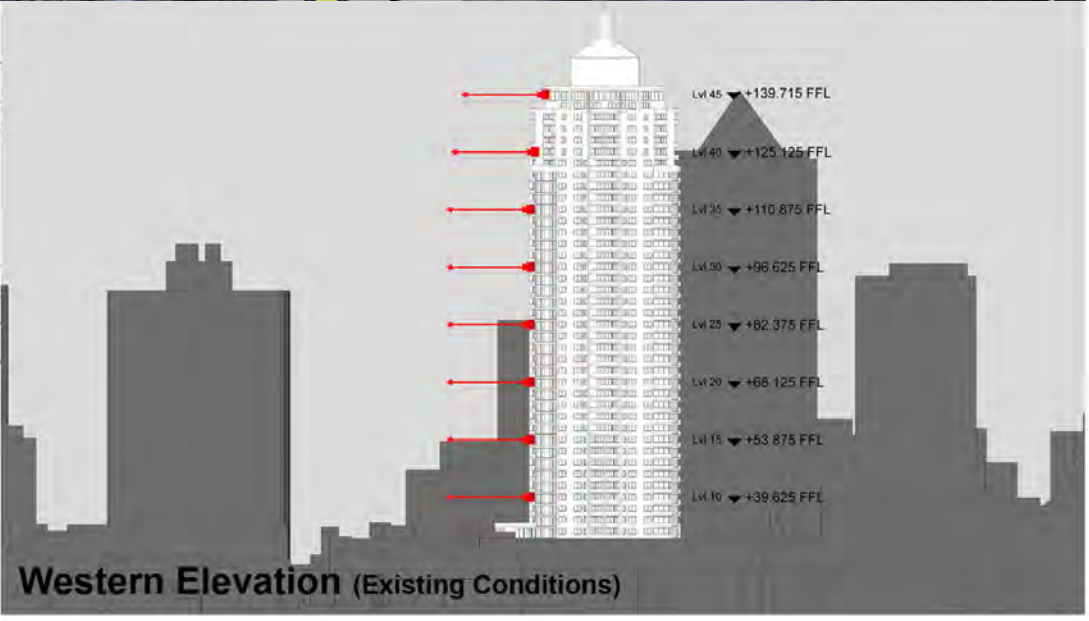
Existing View



Proposed View



Plan (Existing Conditions)



Western Elevation (Existing Conditions)

Peak Apartments

Position: P2B

Level: 30

RL: 98.225 (Camera Height)

FOR INFORMATION ONLY

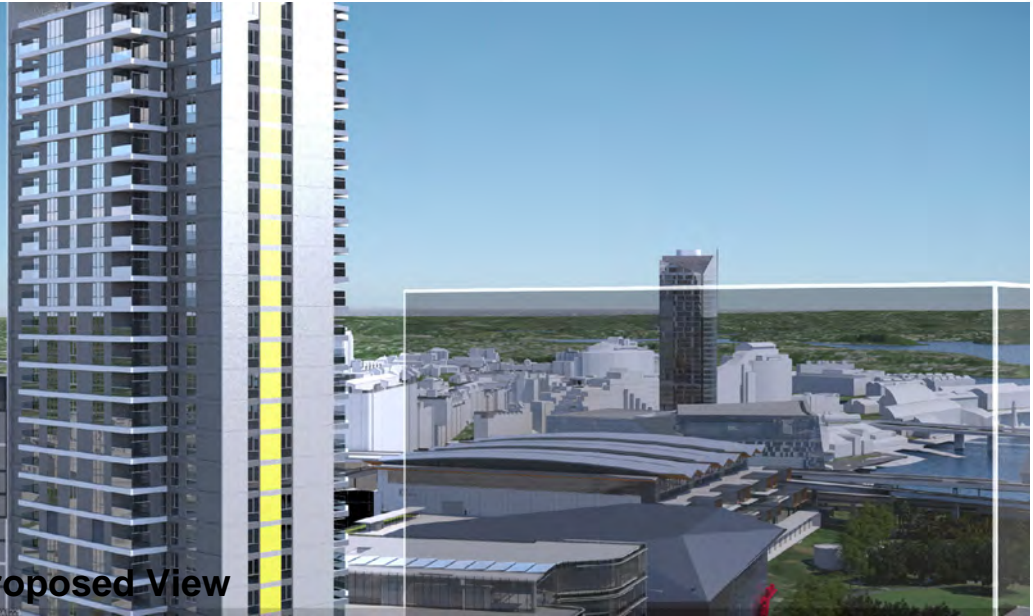
These images have been produced for view analysis purposes only.
Proposed outer parameters for built form ("parameter boxes") shown form part of State Significant Development Application SSD 5878 (Concept Proposal) and do not form part of this development application.
Building forms shown include those approved as part of State Significant Development Applications SSD5752 (ICC Core Facilities), SSD 6116 (ICC Hotel), SSD6011 (SW Plot residential mixed use development), and SSD6010 (Student Accommodation development) as well as the proposed SSD 6626 (NE Plot residential mixed use development) which is currently being assessed.

LEGEND: 20

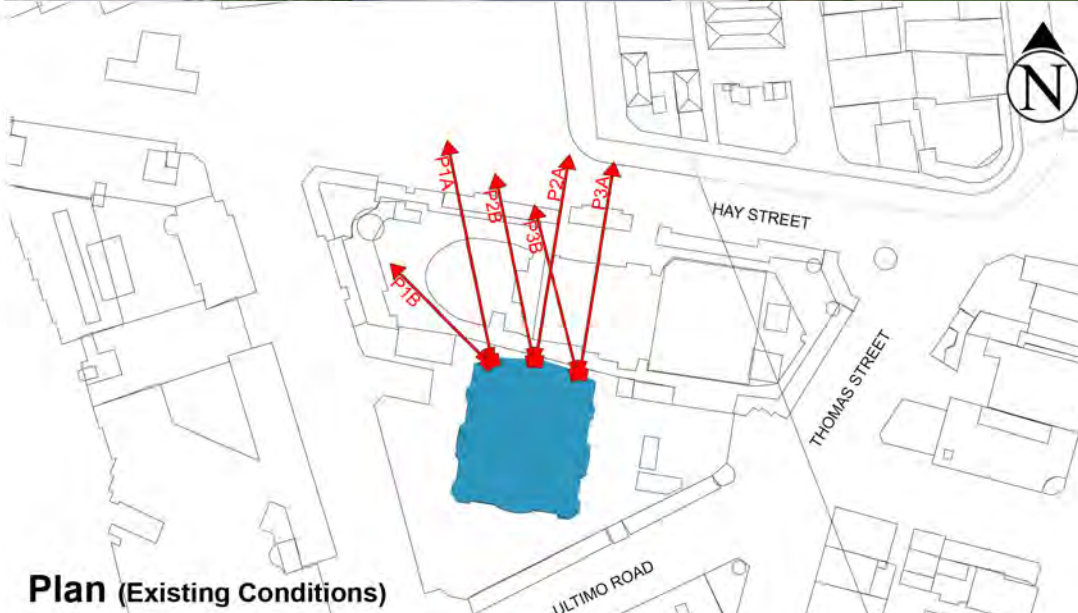
- Key Building
- View Direction (50mm Camera)
- Parameter Boxes in the Haymarket Precinct



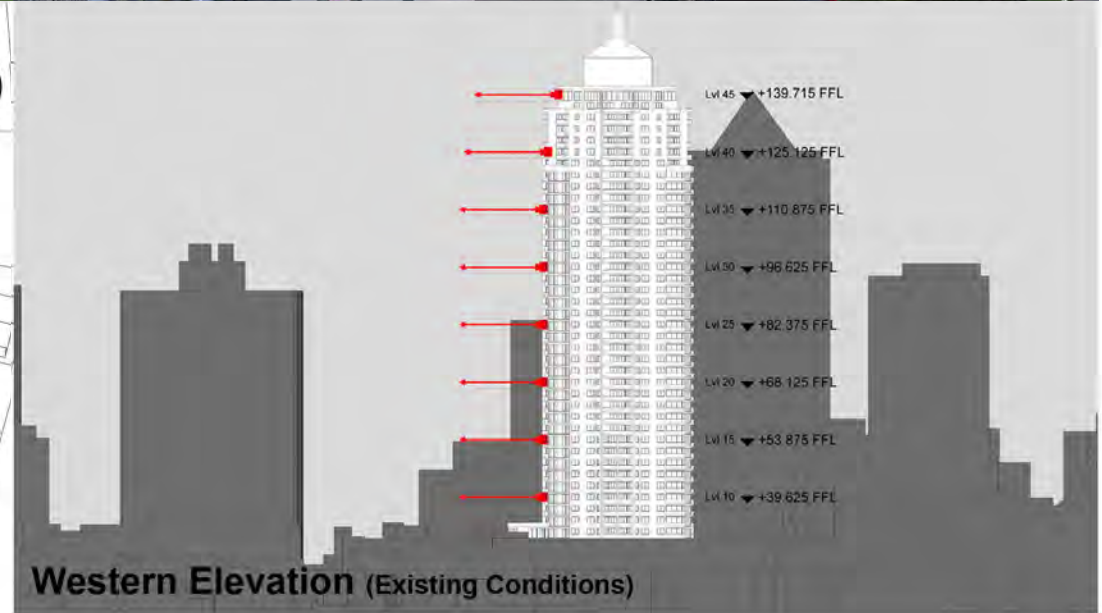
Existing View



Proposed View



Plan (Existing Conditions)



Western Elevation (Existing Conditions)