

Peak Apartments

Position: P1A

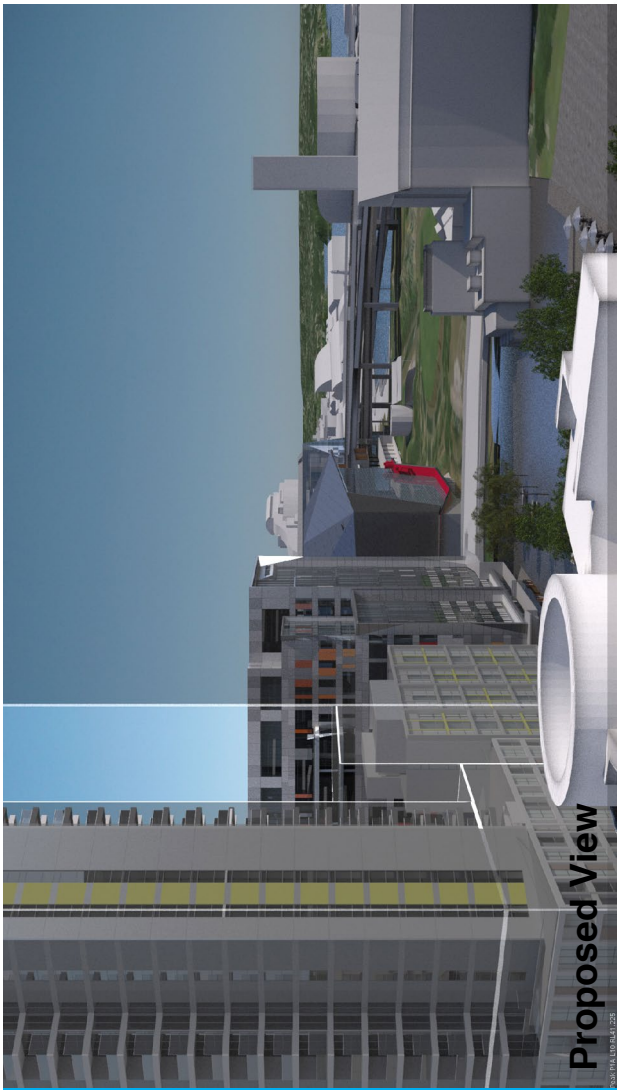
Level: 10

RL: 41.225 (Camera Height)

FOR INFORMATION ONLY

These images have been produced for view analysis purposes only.

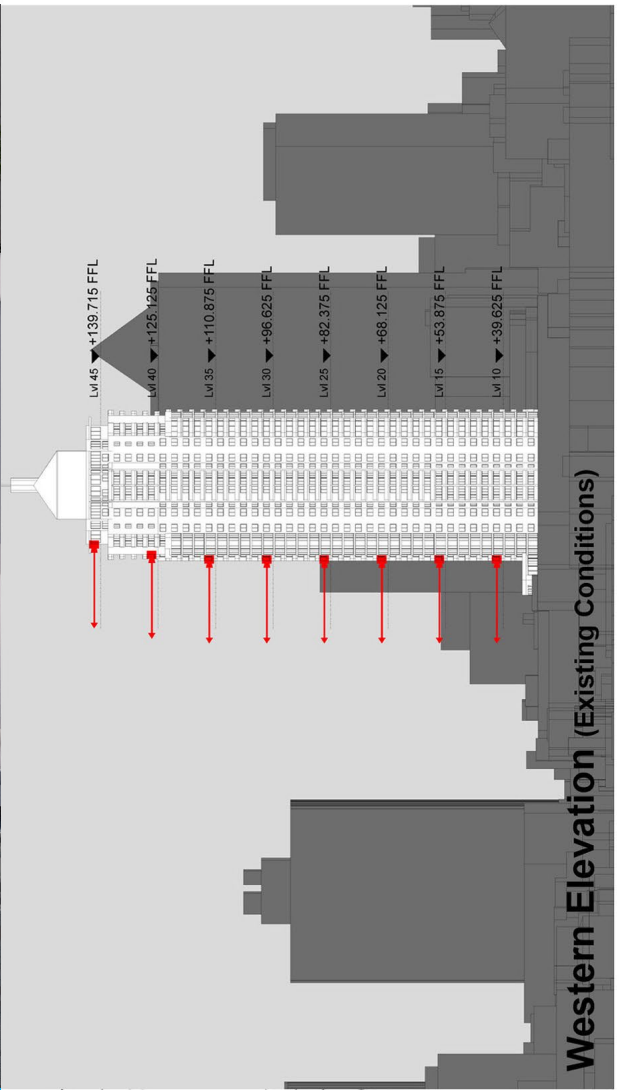
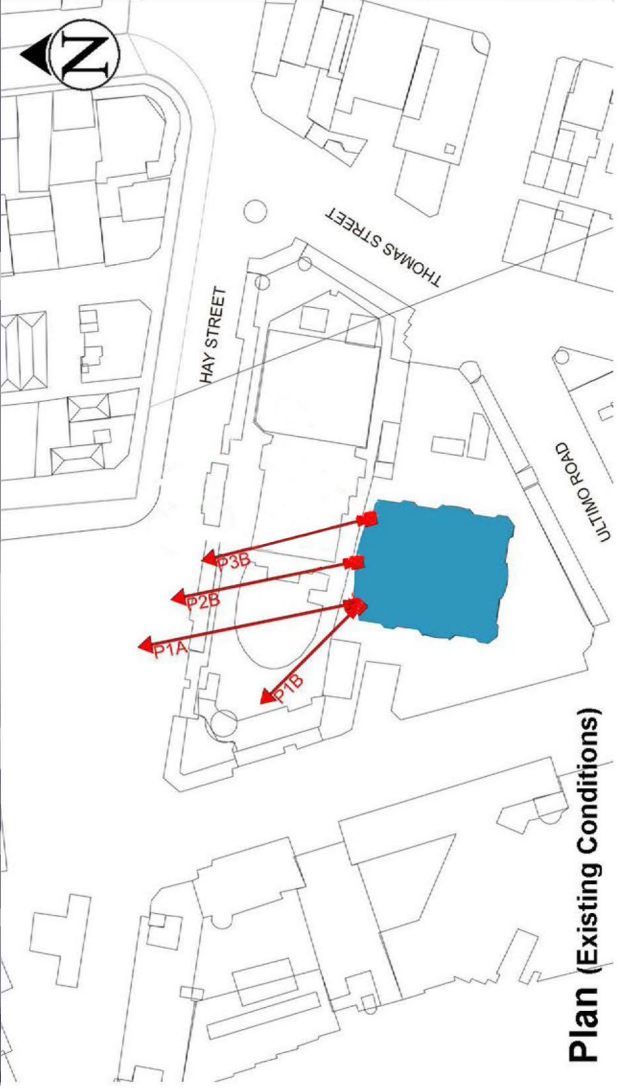
Proposed outer parameters for built form ("parameter boxes") shown form part of State Significant Development Application SSD 5778-2013 and do not form part of this development application. Building forms shown within parameter boxes are illustrative only and do not form part of this development application. They are shown for information and broader illustrative purposes.



8

LEGEND:

- Key Building
- View Direction (50mm Camera)
- Parameter Boxes in the Haymarket Precinct



Peak Apartments

Position: P1B

Level: 45

RL: 140.975 (Camera Height)

FOR INFORMATION ONLY

These images have been produced for view analysis purposes only.
Proposed outer parameters for built form ("parameter boxes") shown form part of State Significant Development Application SSD 5778-2013 and do not form part of this development application.
Building forms shown within parameter boxes are illustrative only and do not form part of this development application. They are shown for information and broader illustrative purposes.

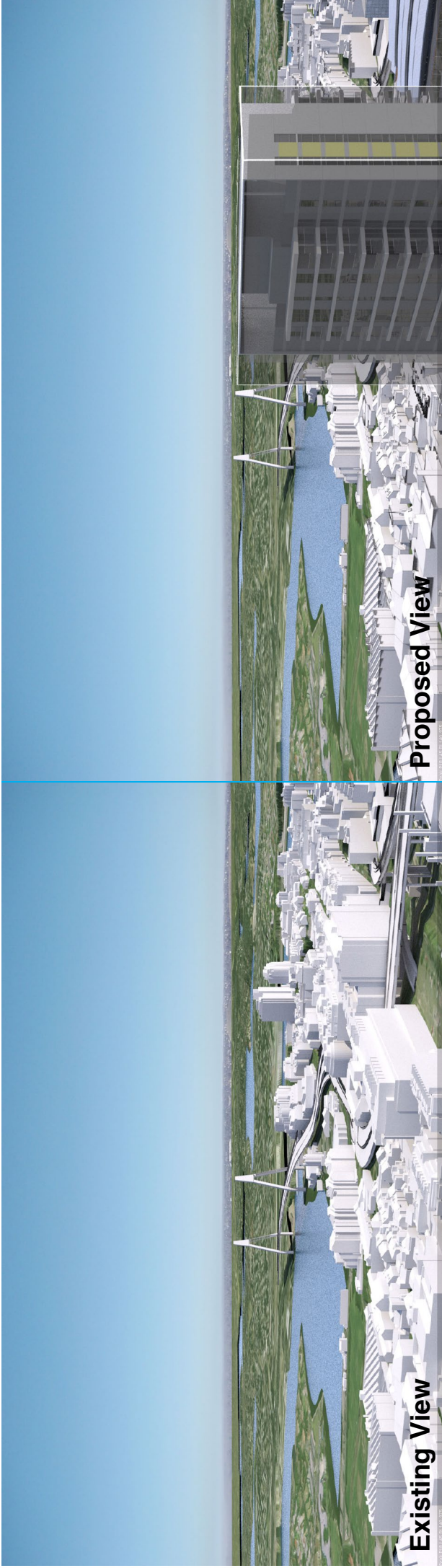
LEGEND:

Key Building

View Direction (50mm Camera)

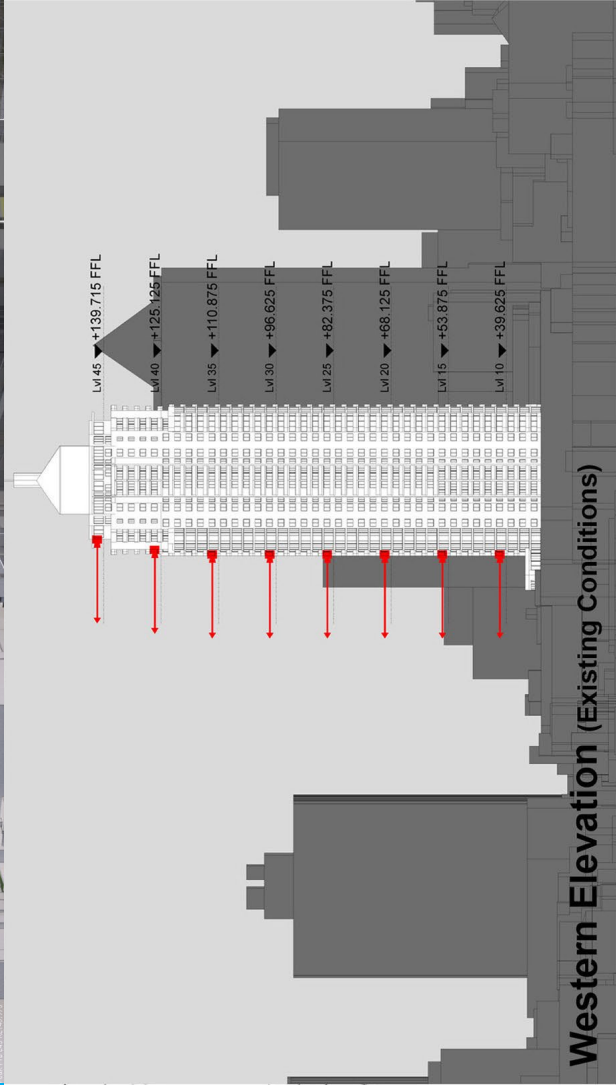
Parameter Boxes in the

Haymarket Precinct

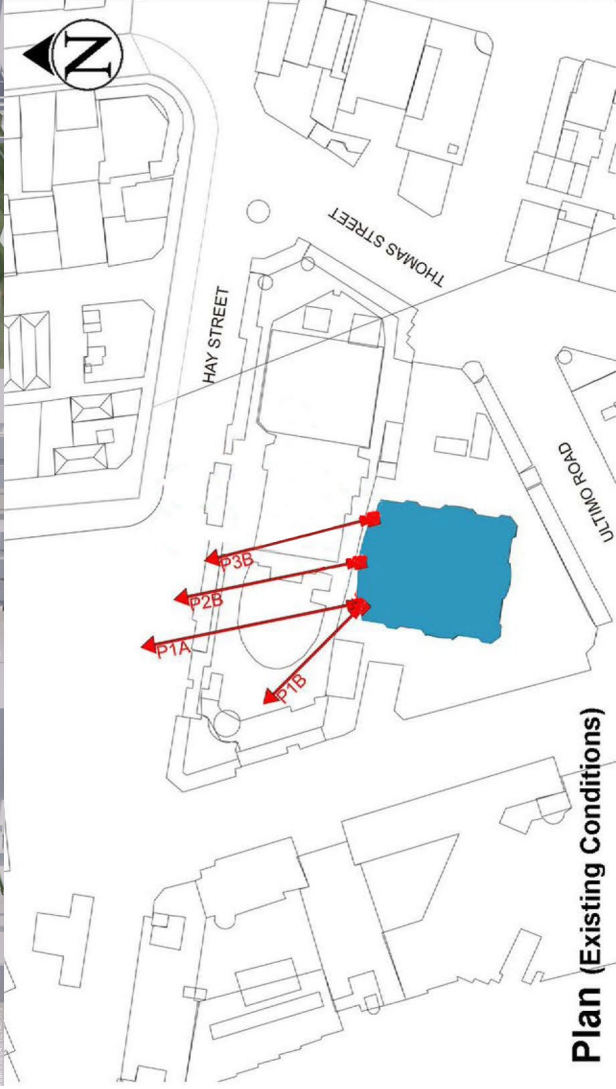


Proposed View

Existing View



Western Elevation (Existing Conditions)



Plan (Existing Conditions)

Peak Apartments

Position: P1B

Level: 40

RL: 126.725 (Camera Height)

FOR INFORMATION ONLY

These images have been produced for view analysis purposes only. Proposed outer parameters for built form ("parameter boxes") shown form part of State Significant Development Application SSD 5778-2013 and do not form part of this development application. Building forms shown within parameter boxes are illustrative only and do not form part of this development application. They are shown for information and broader illustrative purposes.

LEGEND:

Key Building

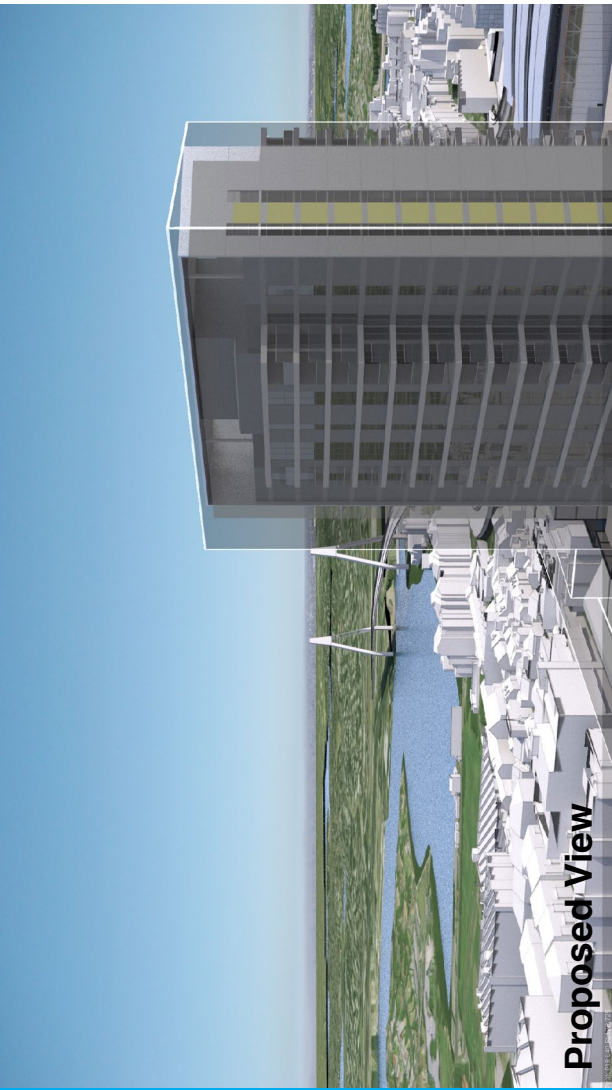
View Direction (50mm Camera)

Parameter Boxes in the

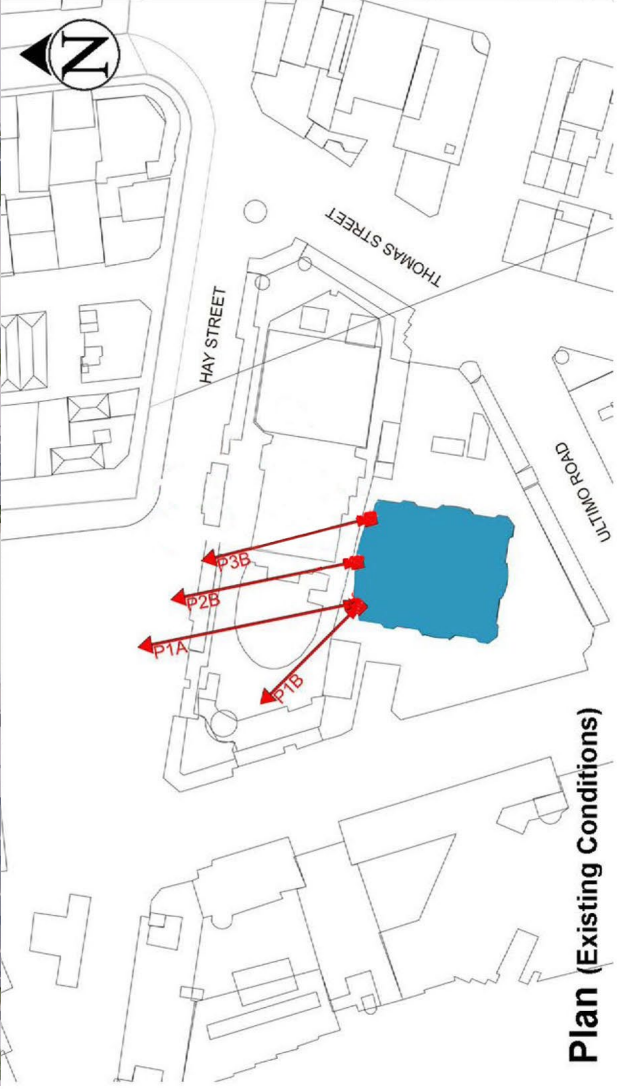
Haymarket Precinct



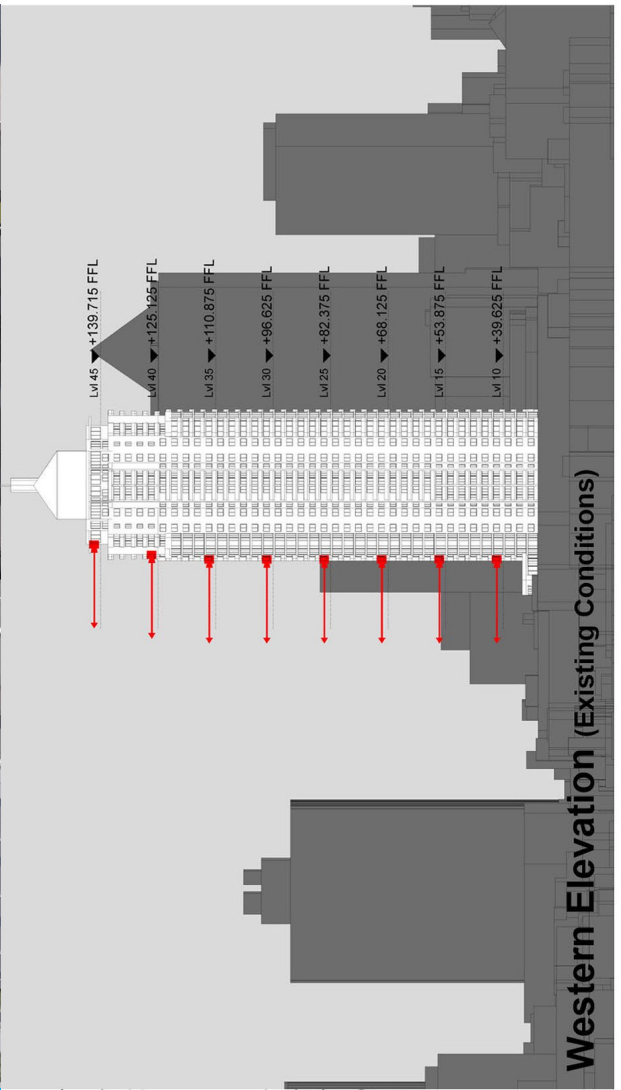
Existing View



Proposed View



Plan (Existing Conditions)



Western Elevation (Existing Conditions)

Peak Apartments

Position: P1B

Level: 35

RL: 112.475 (Camera Height)

FOR INFORMATION ONLY

These images have been produced for view analysis purposes only.

Proposed outer parameters for built form ("parameter boxes") shown form part of State Significant Development Application SSD 5778-2013 and do not form part of this development application. Building forms shown within parameter boxes are illustrative only and do not form part of this development application. They are shown for information and broader illustrative purposes.

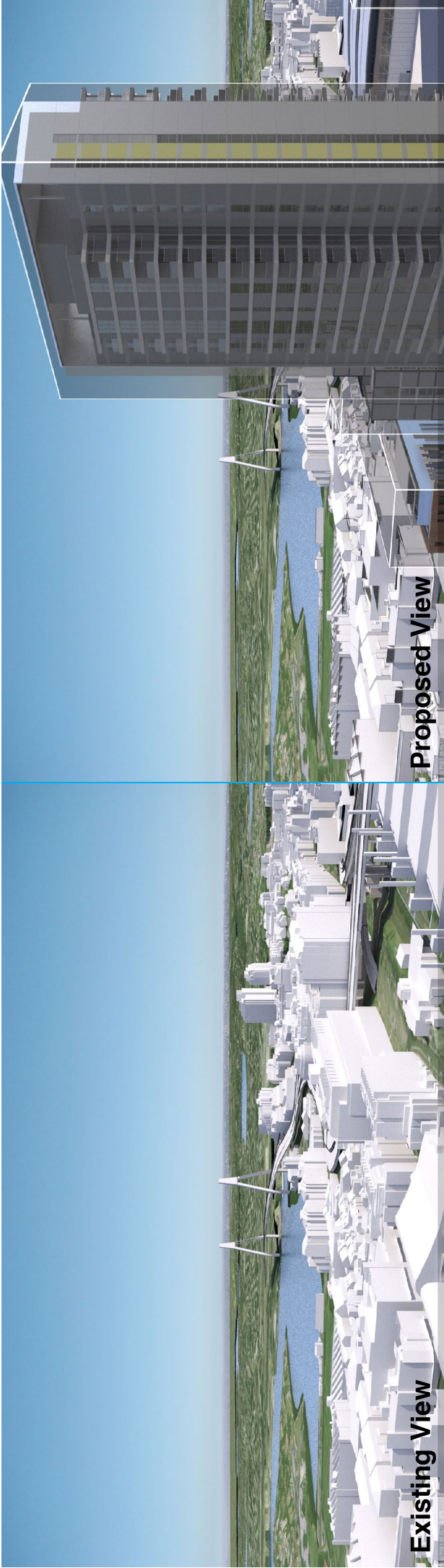
LEGEND:

Key Building

View Direction (50mm Camera)

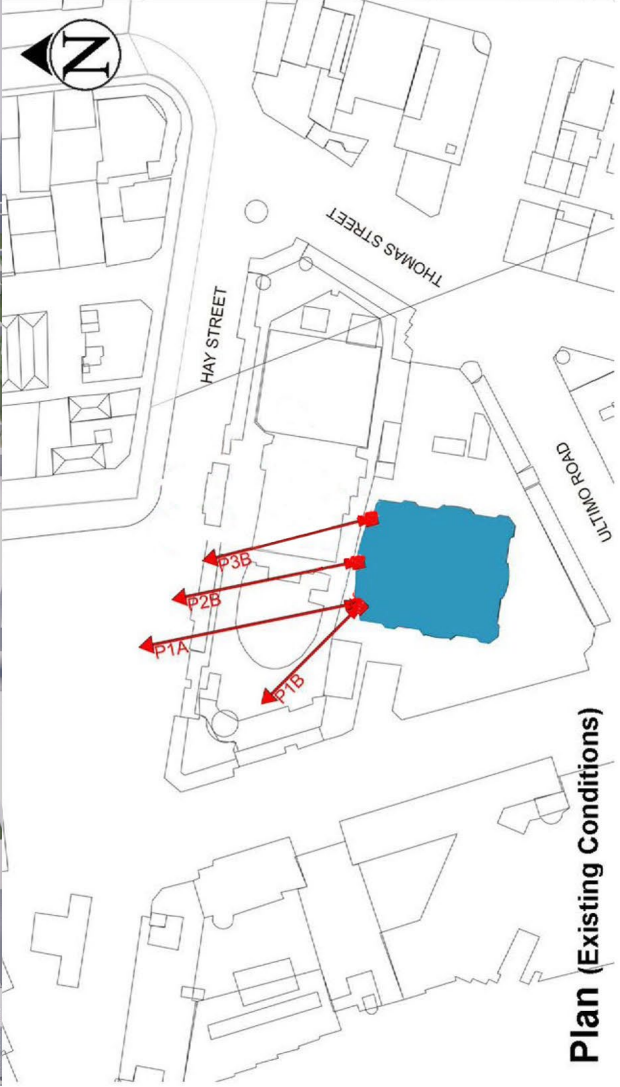
Parameter Boxes in the

Haymarket Precinct

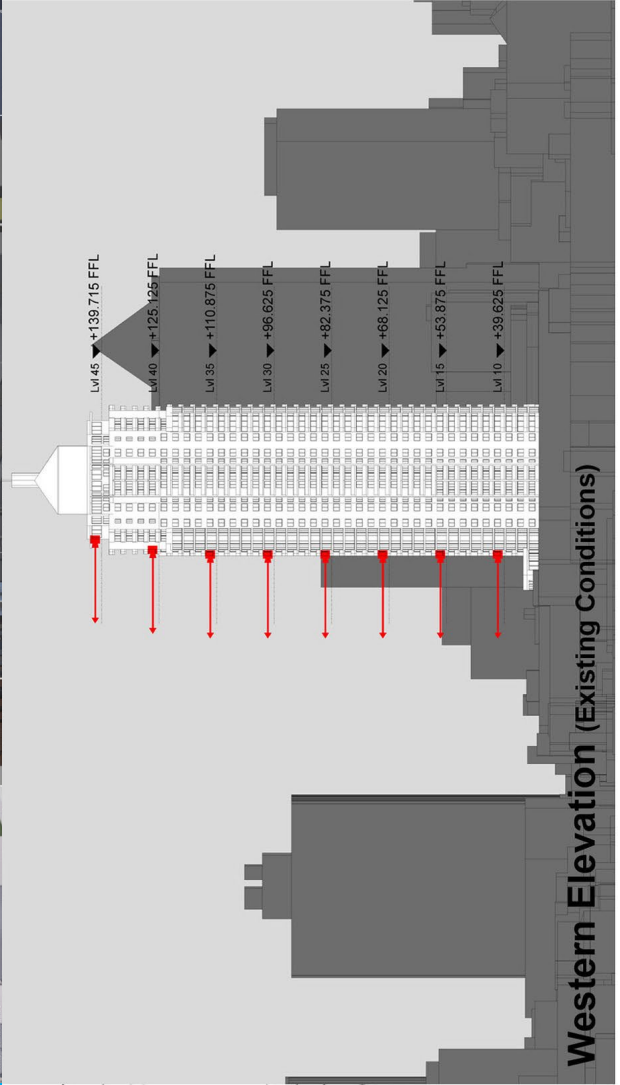


Existing View

Proposed View



Plan (Existing Conditions)



Western Elevation (Existing Conditions)

Peak Apartments

Position: P1B

Level: 30

RL: 98.225 (Camera Height)

FOR INFORMATION ONLY

These images have been produced for view analysis purposes only.

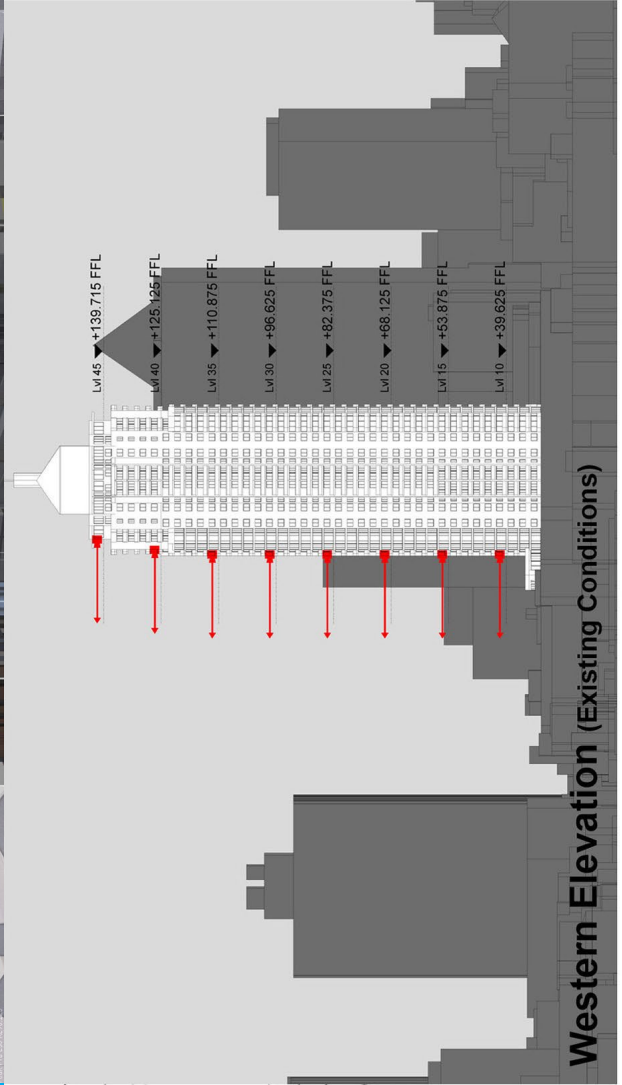
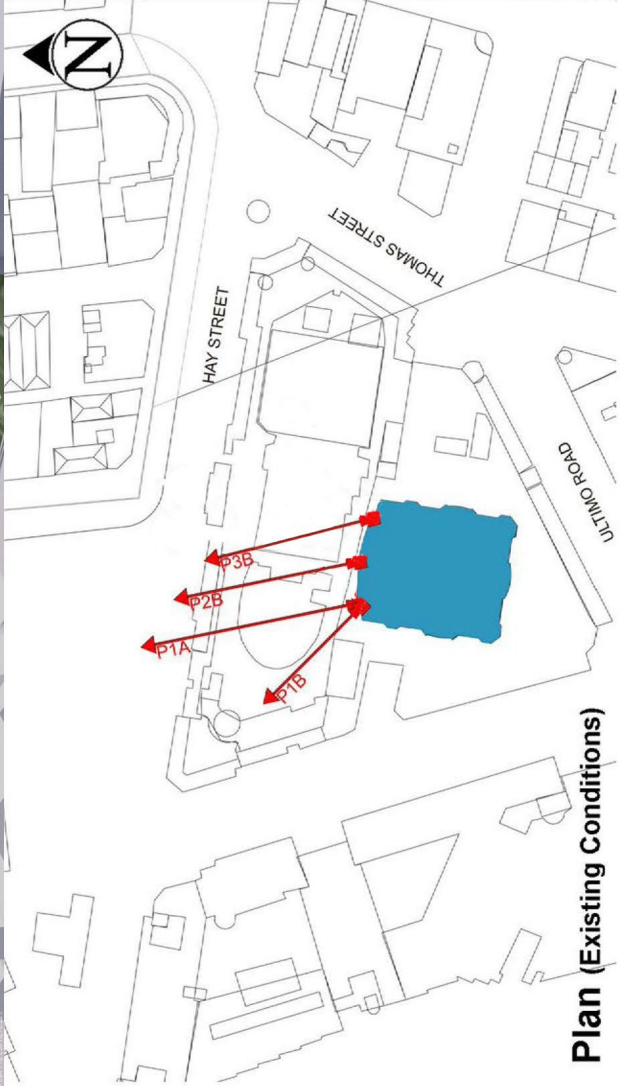
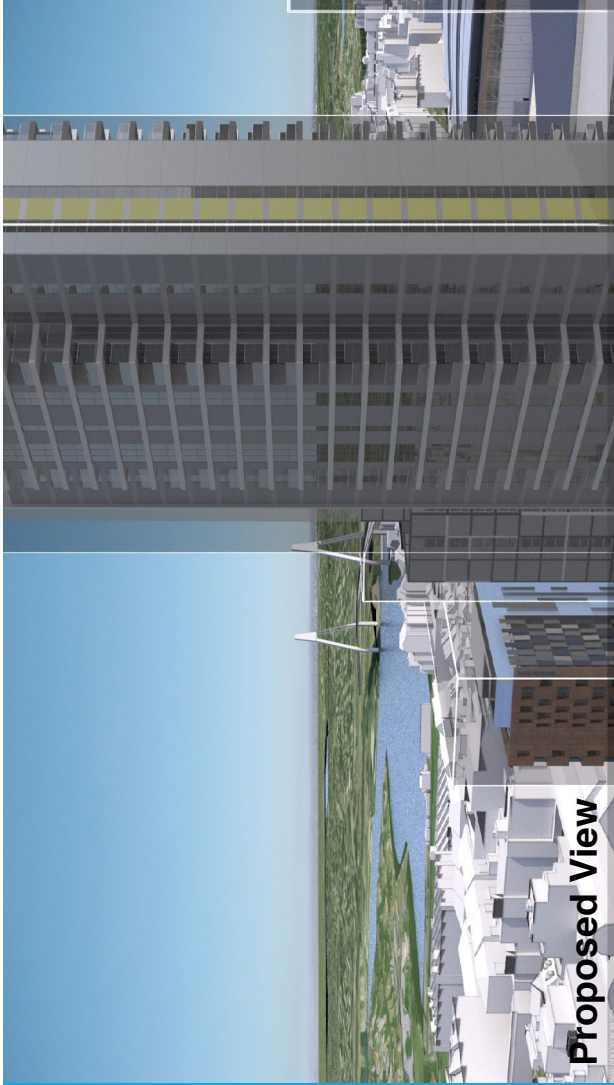
Proposed outer parameters for built form ("parameter boxes") shown form part of State Significant Development Application SSD 5778-2013 and do not form part of this development application. Building forms shown within parameter boxes are illustrative only and do not form part of this development application. They are shown for information and broader illustrative purposes.

LEGEND:

Key Building

View Direction (50mm Camera)

Parameter Boxes in the Haymarket Precinct



Peak Apartments

Position: P1B

Level: 25

RL: 83.975 (Camera Height)

FOR INFORMATION ONLY

These images have been produced for view analysis purposes only.

Proposed outer parameters for built form ("parameter boxes") shown form part of State Significant Development Application SSD 5778-2013 and do not form part of this development application. Building forms shown within parameter boxes are illustrative only and do not form part of this development application. They are shown for information and broader illustrative purposes.

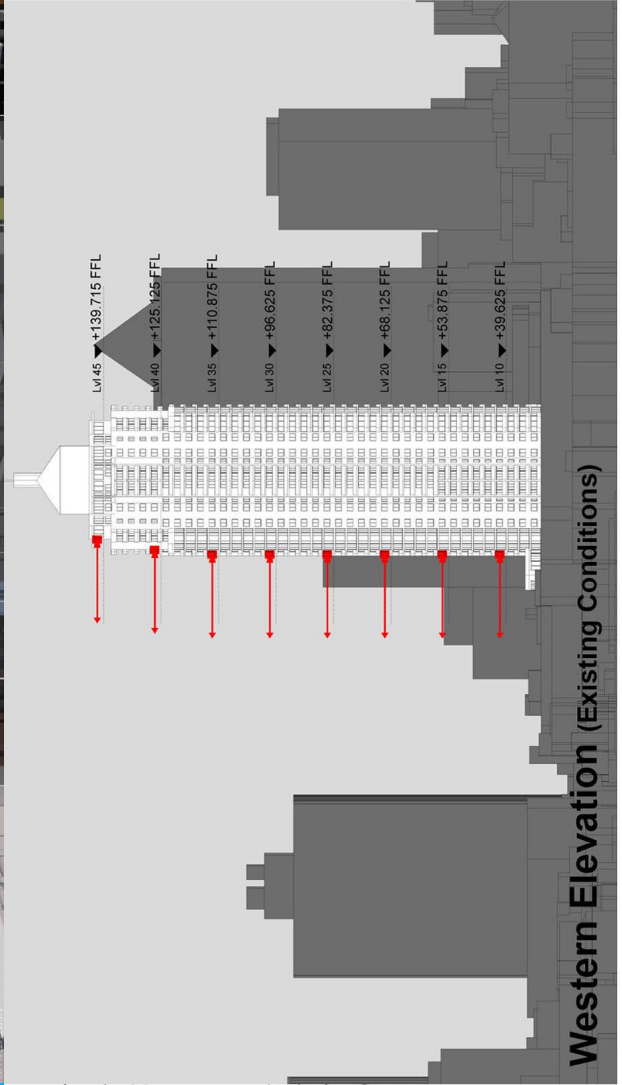
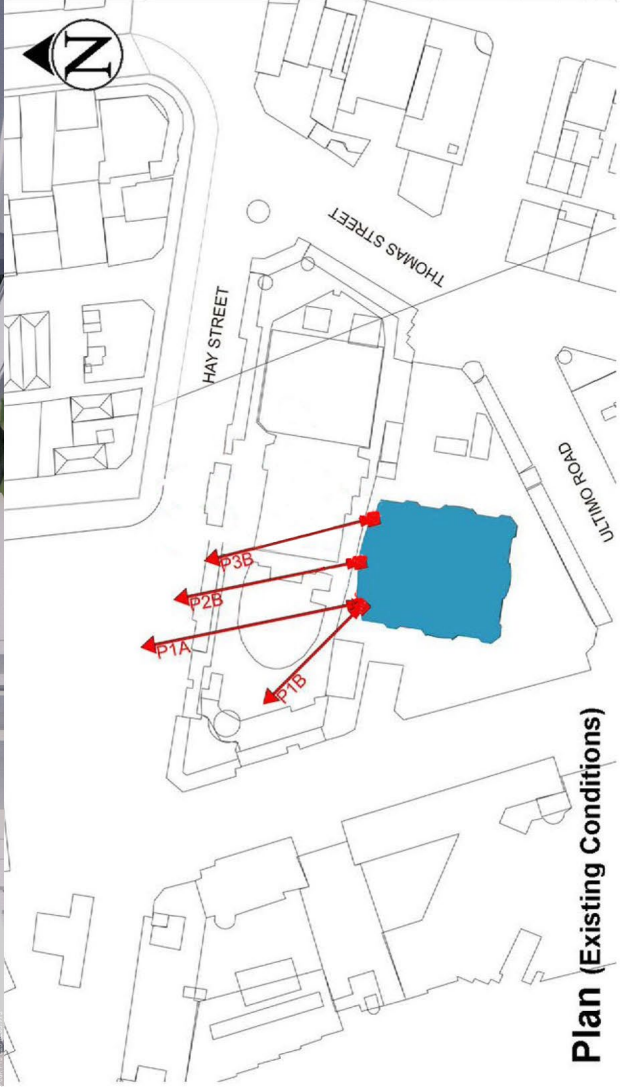
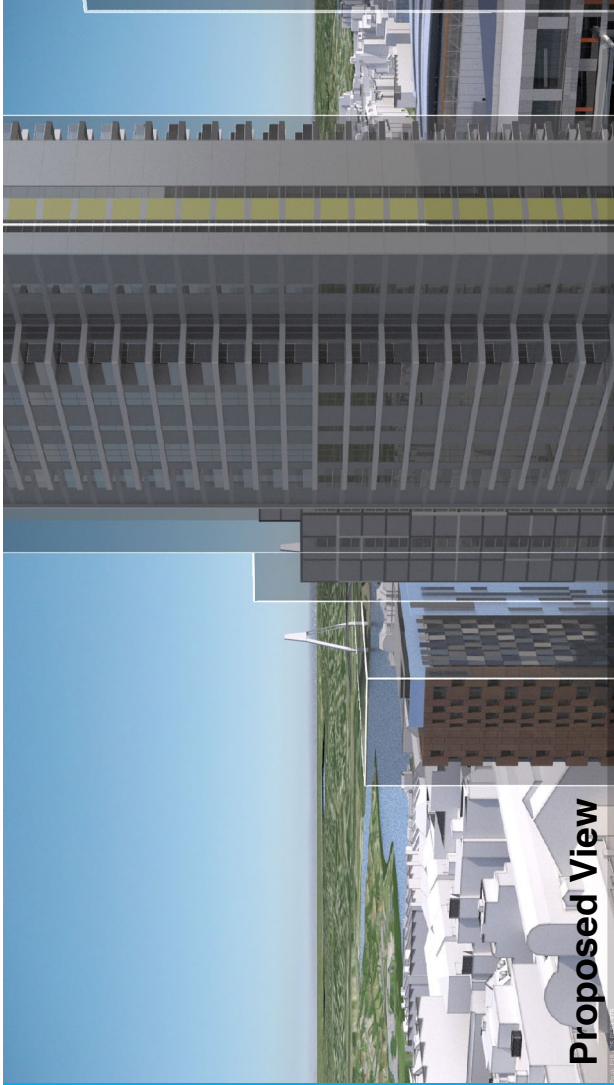
LEGEND:

Key Building

View Direction (50mm Camera)

Parameter Boxes in the

Haymarket Precinct



Peak Apartments

Position: P1B

Level: 20

RL: 69.725 (Camera Height)

FOR INFORMATION ONLY

These images have been produced for view analysis purposes only.

Proposed outer parameters for built form ("parameter boxes") shown form part of State Significant Development Application SSD 5778-2013 and do not form part of this development application. Building forms shown within parameter boxes are illustrative only and do not form part of this development application. They are shown for information and broader illustrative purposes.

14

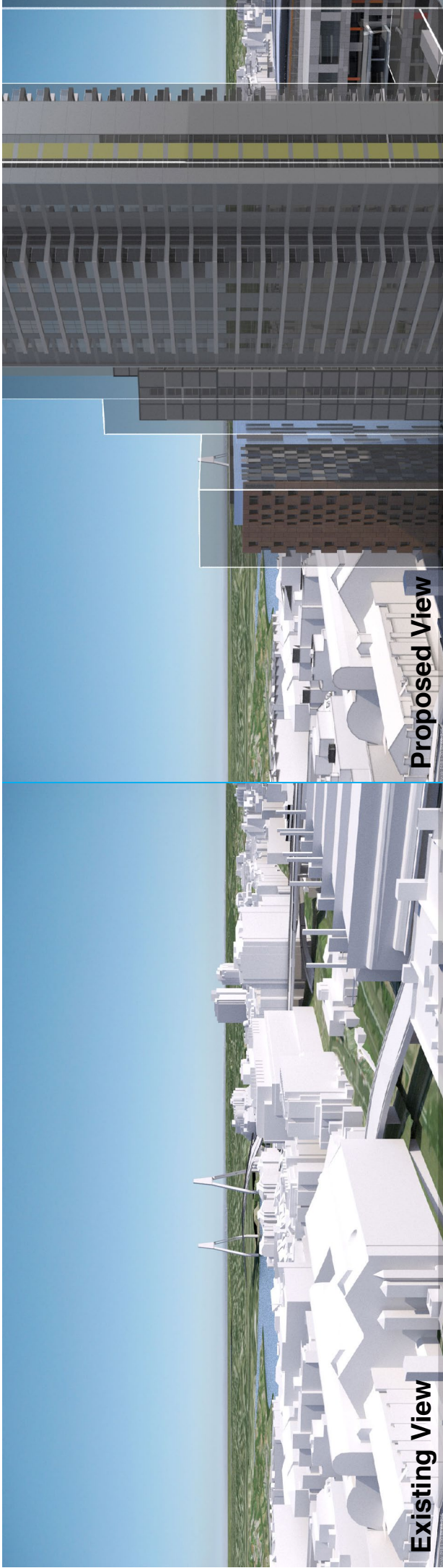
LEGEND:

Key Building

View Direction (50mm Camera)

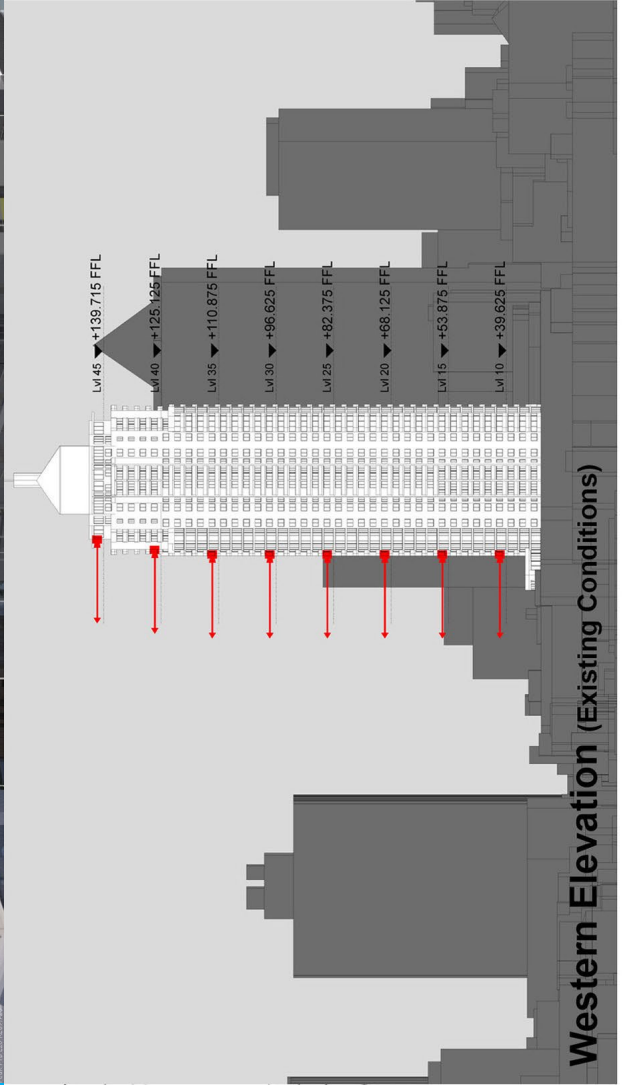
Parameter Boxes in the

Haymarket Precinct

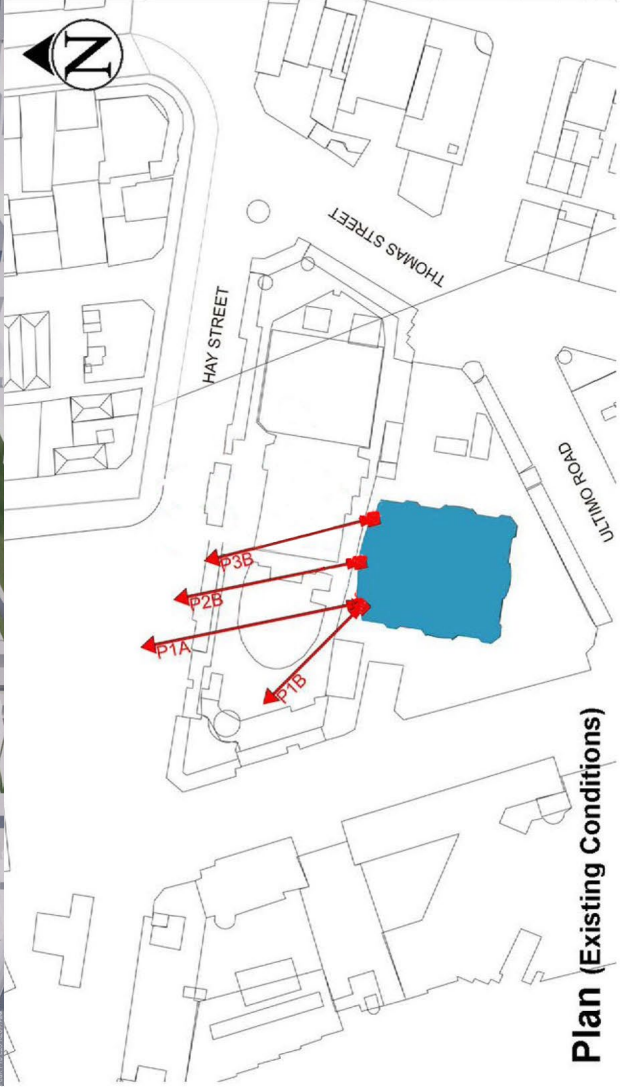


Proposed View

Existing View



Western Elevation (Existing Conditions)



Plan (Existing Conditions)

Peak Apartments

Position: P1B

Level: 15

RL: 55.475 (Camera Height)

FOR INFORMATION ONLY

These images have been produced for view analysis purposes only. Proposed outer parameters for built form ("parameter boxes") shown form part of State Significant Development Application SSD 5778-2013 and do not form part of this development application. Building forms shown within parameter boxes are illustrative only and do not form part of this development application. They are shown for information and broader illustrative purposes.

15

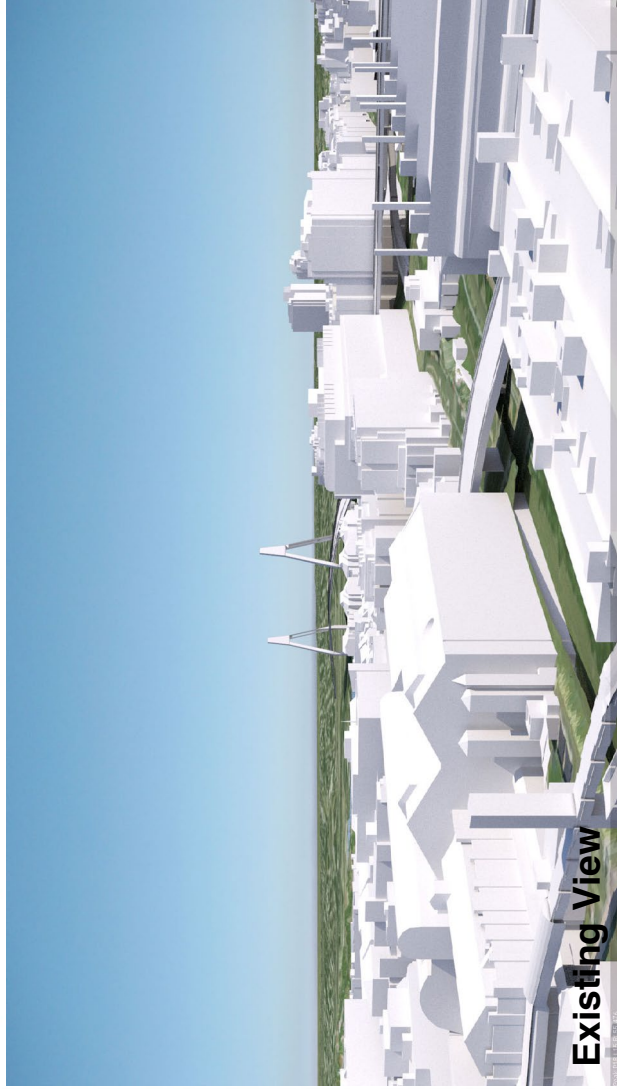
LEGEND:

Key Building

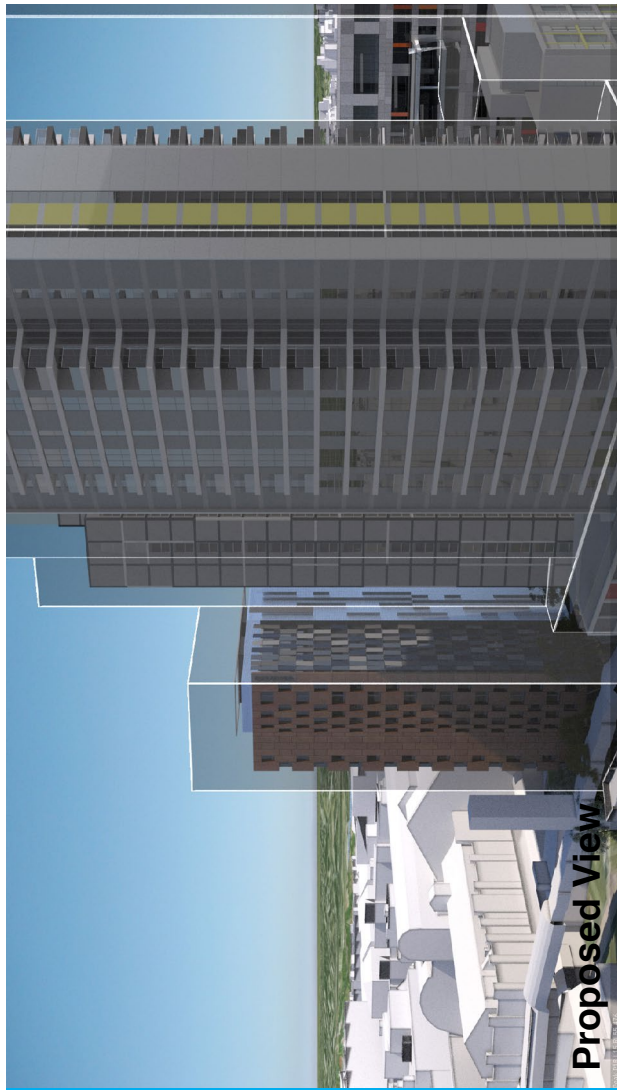
View Direction (50mm Camera)

Parameter Boxes in the

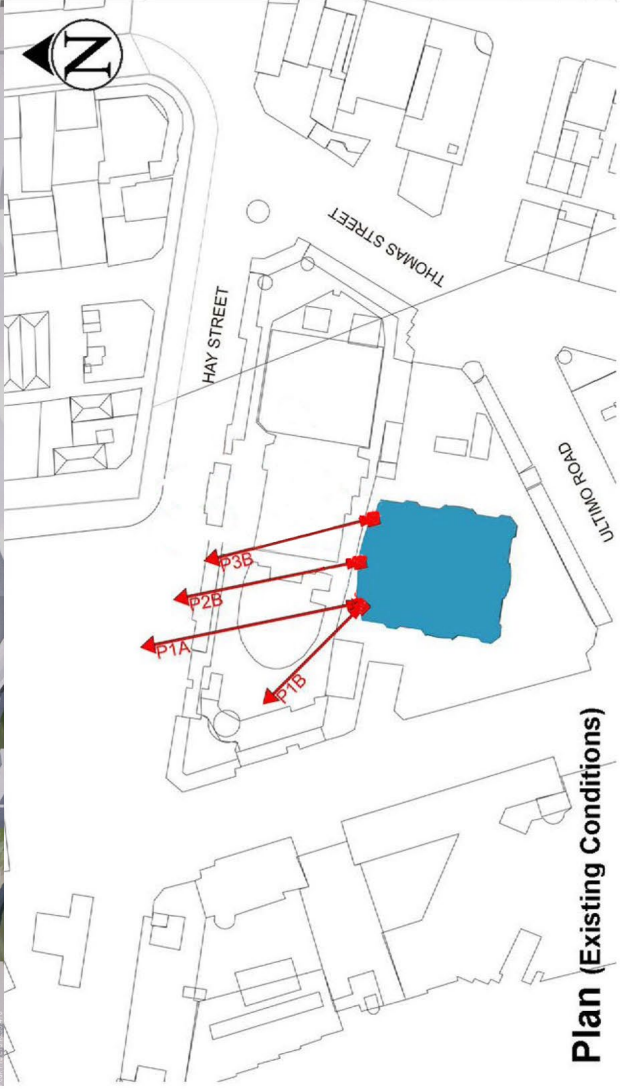
Haymarket Precinct



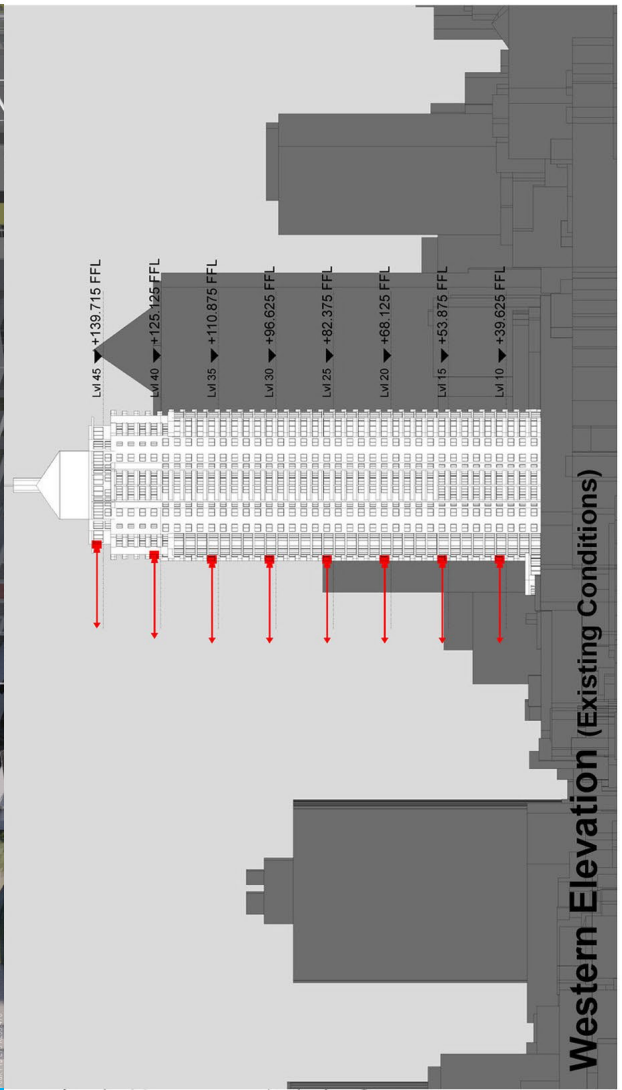
Existing View



Proposed View



Plan (Existing Conditions)



Western Elevation (Existing Conditions)

Peak Apartments

Position: P1B

Level: 10

RL: 41.225 (Camera Height)

FOR INFORMATION ONLY

These images have been produced for view analysis purposes only.

Proposed outer parameters for built form ("parameter boxes") shown form part of State Significant Development Application SSD 5778-2013 and do not form part of this development application. Building forms shown within parameter boxes are illustrative only and do not form part of this development application. They are shown for information and broader illustrative purposes.

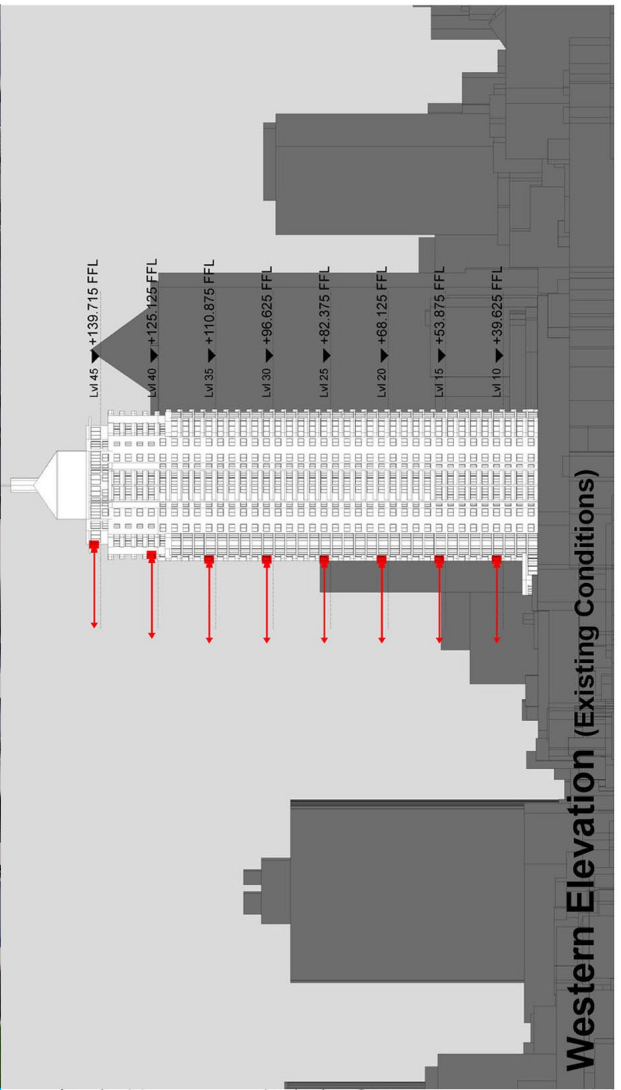
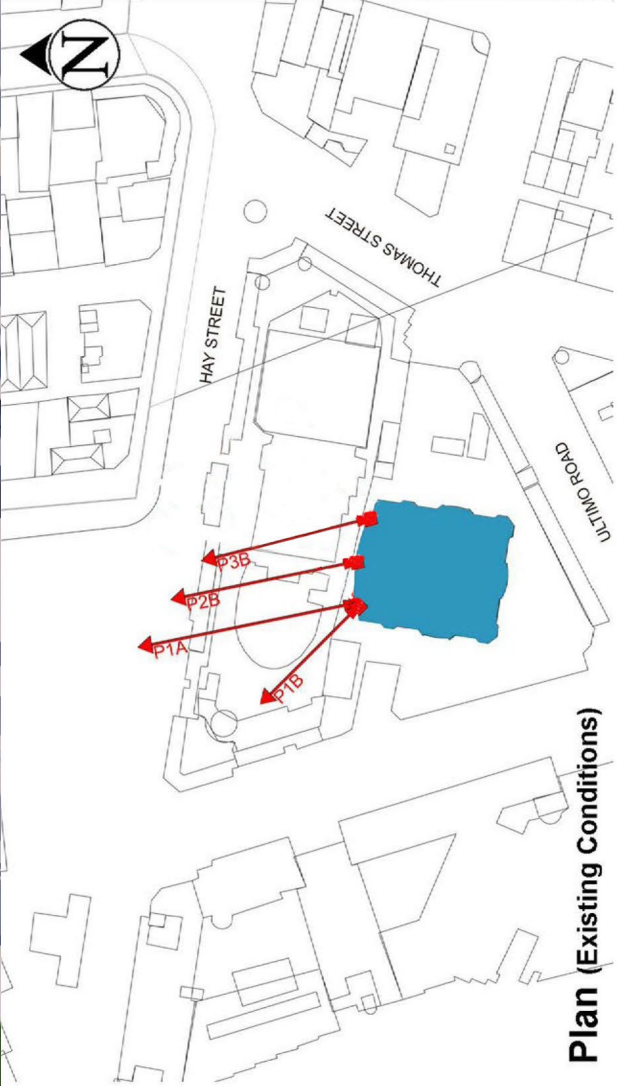
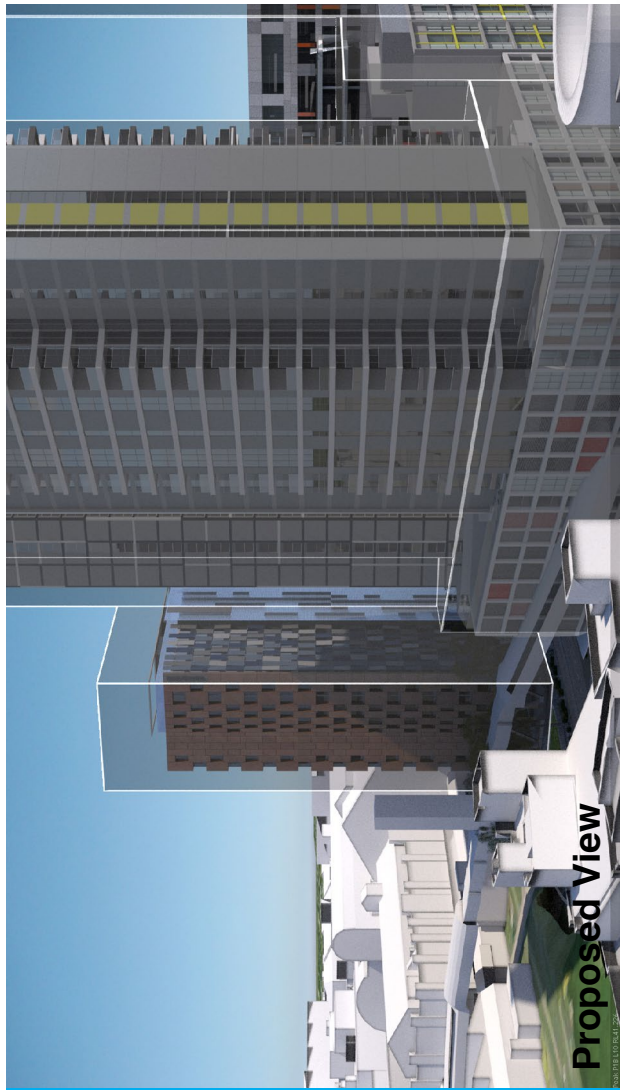
LEGEND:

Key Building

View Direction (50mm Camera)

Parameter Boxes in the

Haymarket Precinct



Peak Apartments

Position: P2B

Level: 45

RL: 140.975 (Camera Height)

FOR INFORMATION ONLY

These images have been produced for view analysis purposes only.
Proposed outer parameters for built form ("parameter boxes") shown form part of State Significant Development Application SSD 5778-2013 and do not form part of this development application.
Building forms shown within parameter boxes are illustrative only and do not form part of this development application. They are shown for information and broader illustrative purposes.

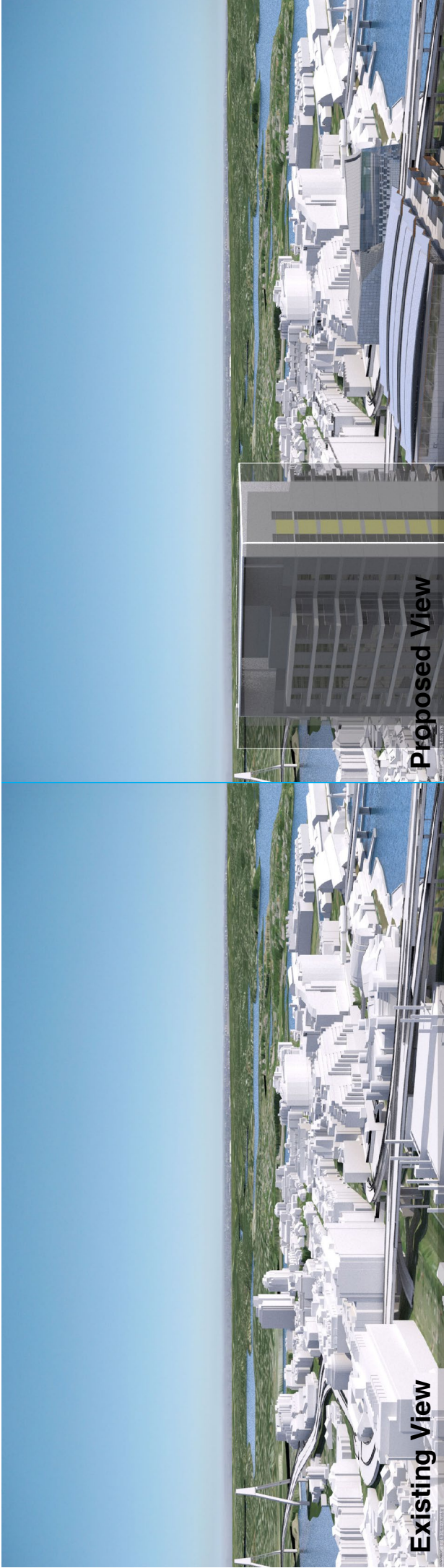
LEGEND:

Key Building

View Direction (50mm Camera)

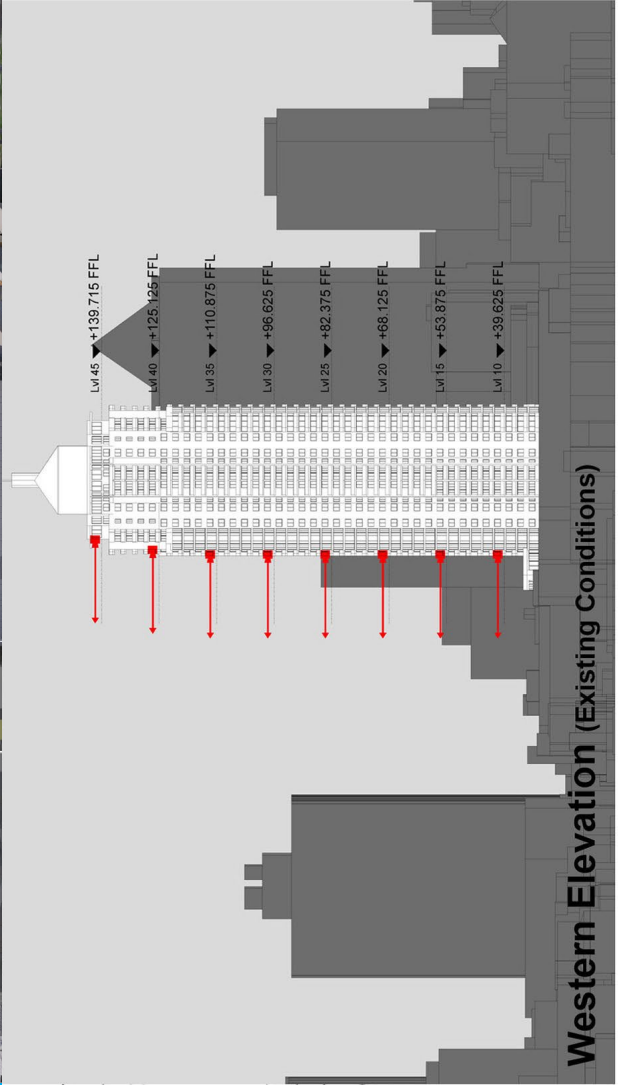
Parameter Boxes in the

Haymarket Precinct

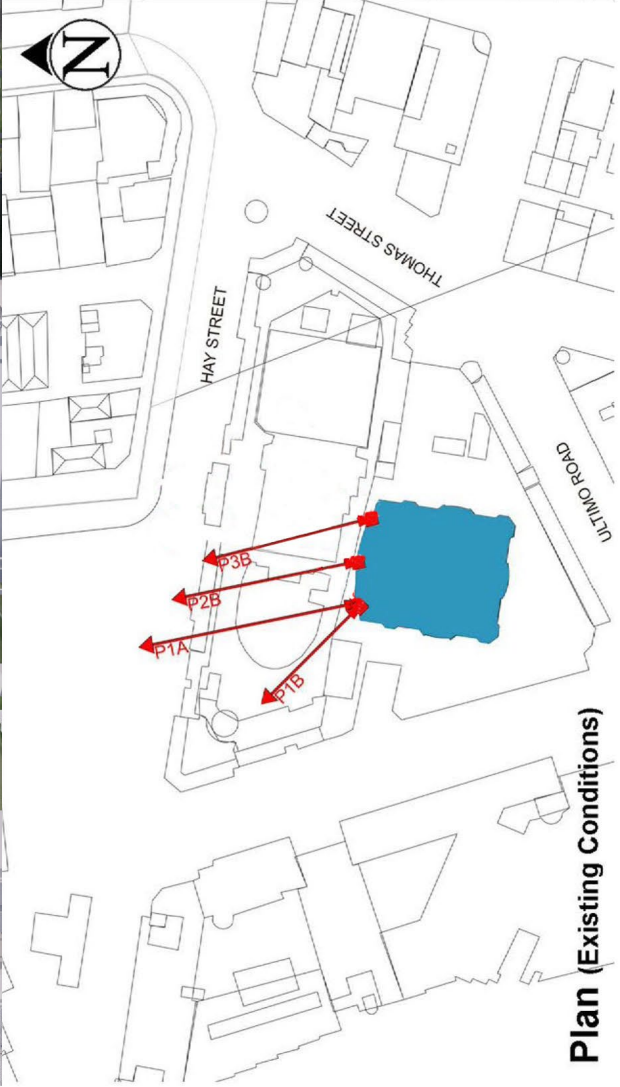


Proposed View

Existing View



Western Elevation (Existing Conditions)



Plan (Existing Conditions)

Peak Apartments

Position: P2B

Level: 40

RL: 126.725 (Camera Height)

FOR INFORMATION ONLY

These images have been produced for view analysis purposes only.

Proposed outer parameters for built form ("parameter boxes") shown form part of State Significant Development Application SSD 5778-2013 and do not form part of this development application. Building forms shown within parameter boxes are illustrative only and do not form part of this development application. They are shown for information and broader illustrative purposes.

LEGEND:

Key Building

View Direction (50mm Camera)

Parameter Boxes in the

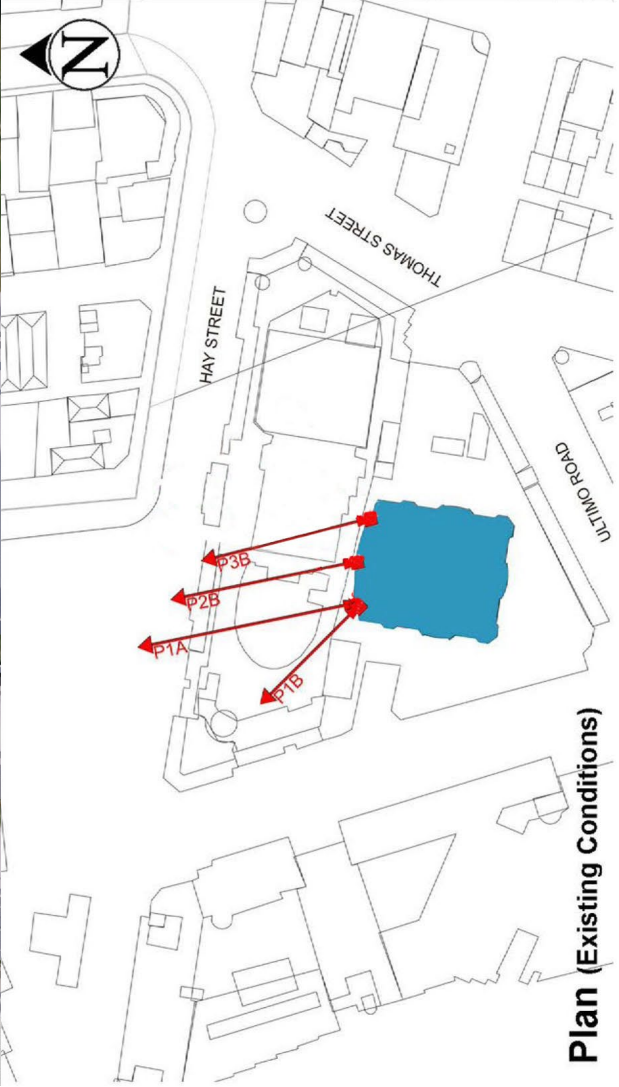
Haymarket Precinct



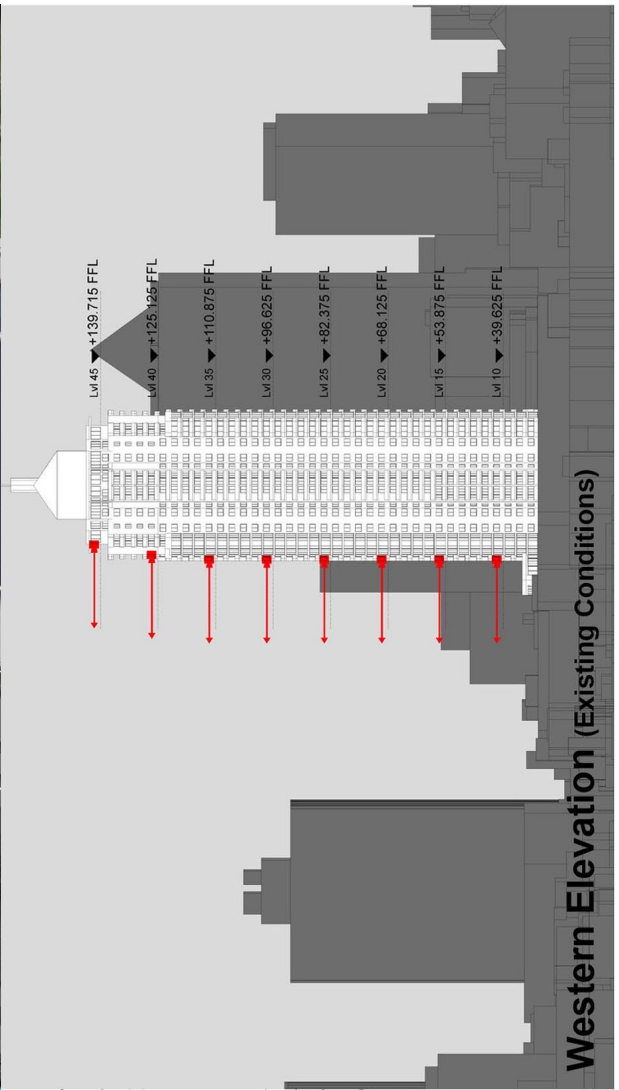
Existing View



Proposed View



Plan (Existing Conditions)



Western Elevation (Existing Conditions)

Peak Apartments

Position: P2B

Level: 35

RL: 112.475 (Camera Height)

FOR INFORMATION ONLY

These images have been produced for view analysis purposes only.

Proposed outer parameters for built form ("parameter boxes") shown form part of State Significant Development Application SSD 5778-2013 and do not form part of this development application. Building forms shown within parameter boxes are illustrative only and do not form part of this development application. They are shown for information and broader illustrative purposes.

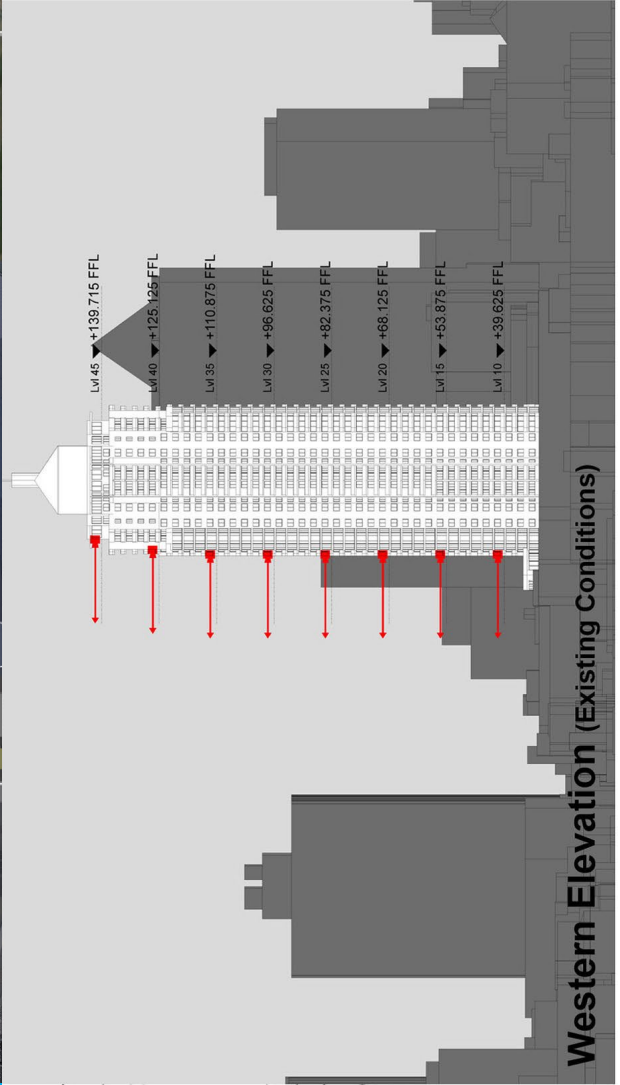
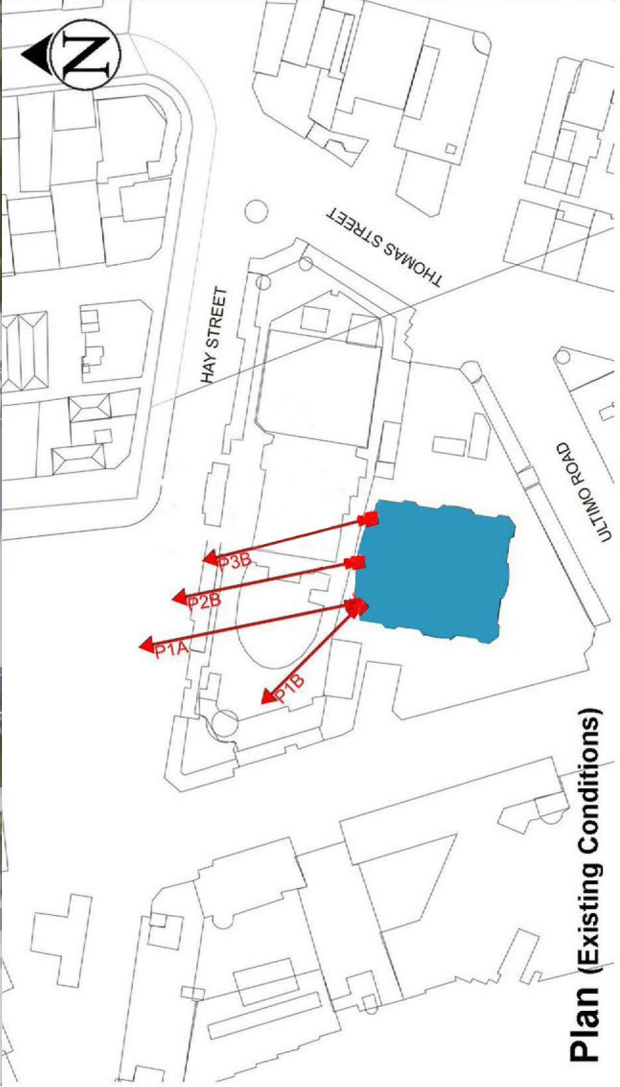
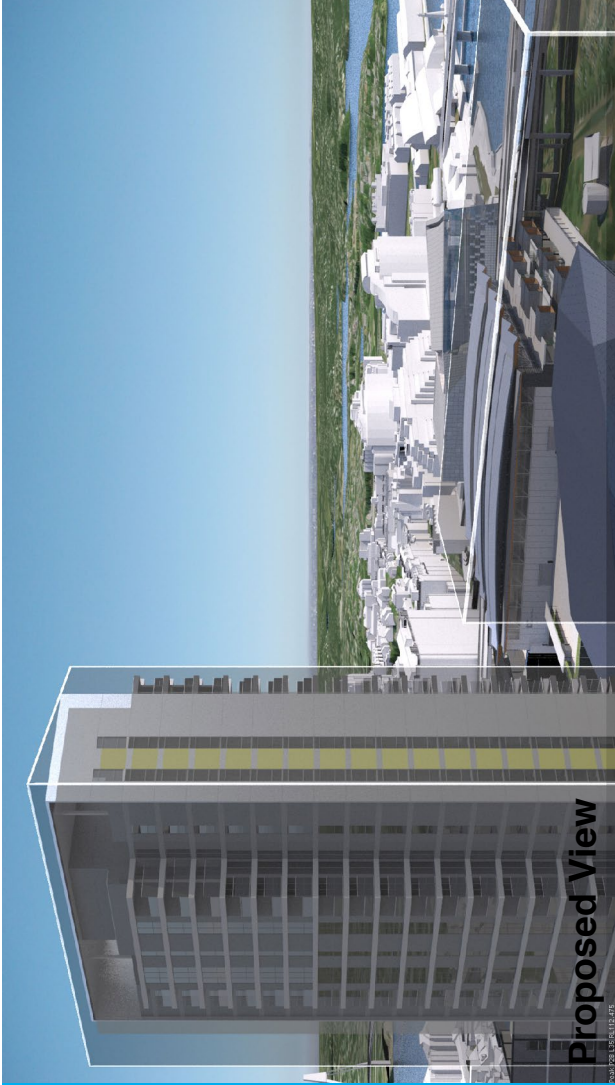
LEGEND:

Key Building

View Direction (50mm Camera)

Parameter Boxes in the

Haymarket Precinct



Peak Apartments

Position: P2B

Level: 30

RL: 98.225 (Camera Height)

FOR INFORMATION ONLY

These images have been produced for view analysis purposes only.

Proposed outer parameters for built form ("parameter boxes") shown form part of State Significant Development Application SSD 5778-2013 and do not form part of this development application. Building forms shown within parameter boxes are illustrative only and do not form part of this development application. They are shown for information and broader illustrative purposes.

LEGEND:

Key Building

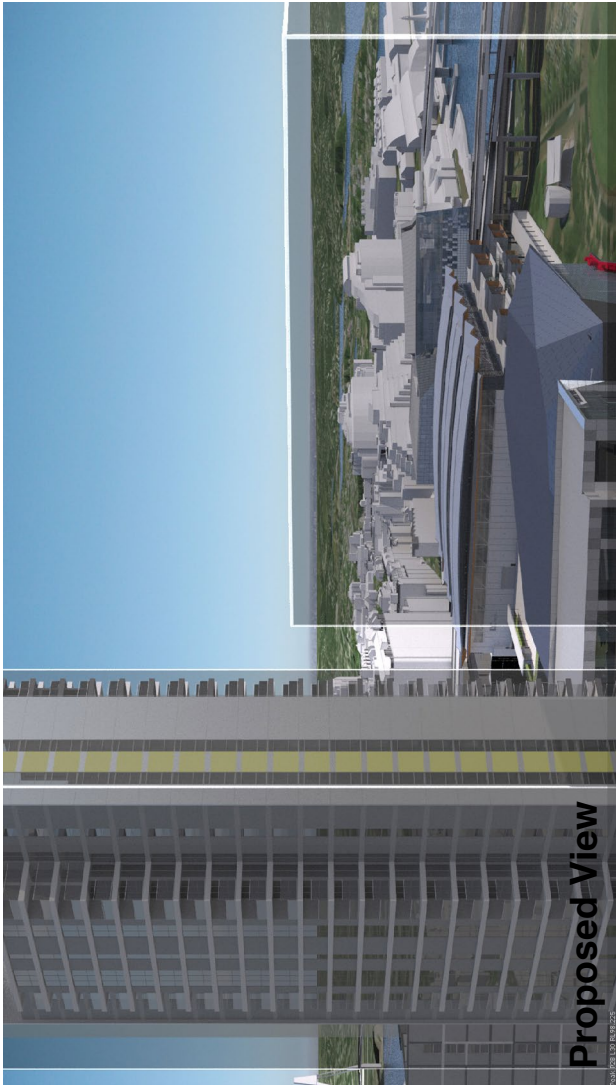
View Direction (50mm Camera)

Parameter Boxes in the

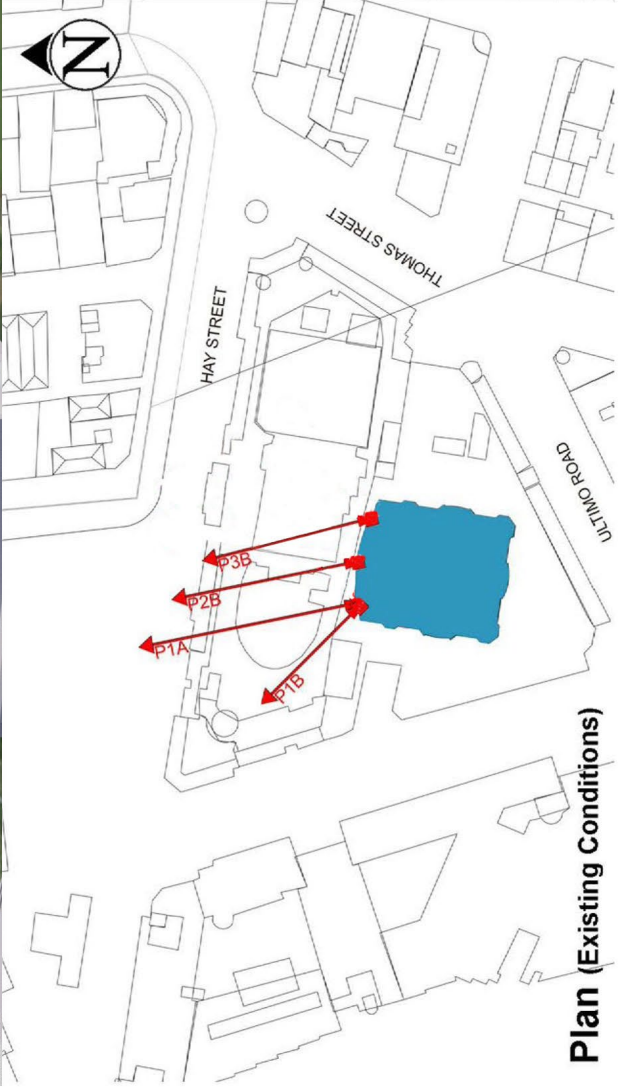
Haymarket Precinct



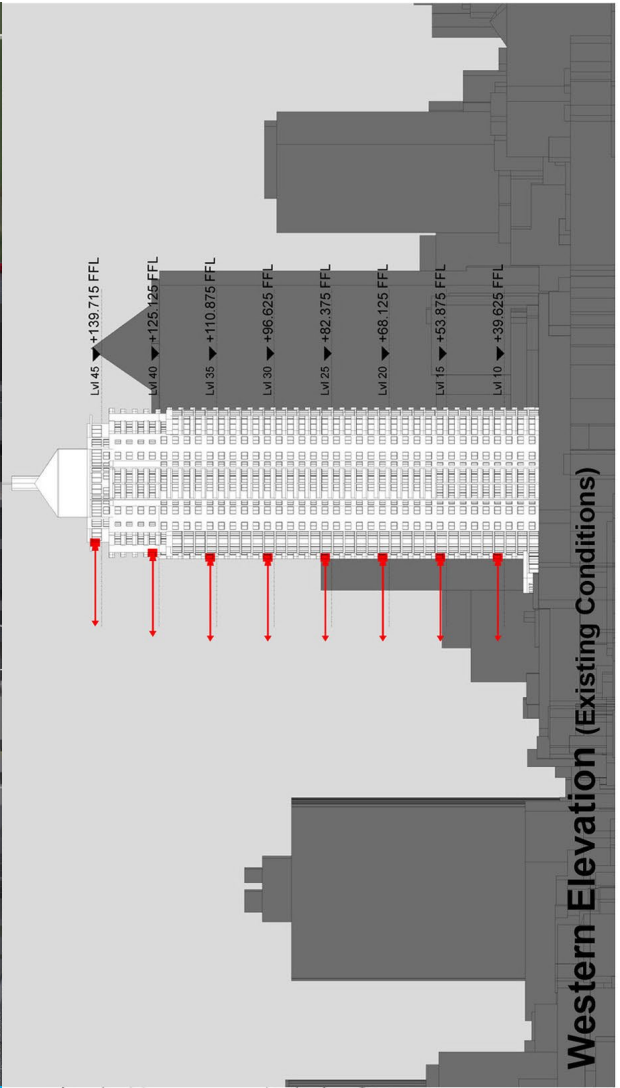
Existing View



Proposed View



Plan (Existing Conditions)



Western Elevation (Existing Conditions)

Peak Apartments

Position: P2B

Level: 25

RL: 83.975 (Camera Height)

FOR INFORMATION ONLY

These images have been produced for view analysis purposes only.

Proposed outer parameters for built form ("parameter boxes") shown form part of State Significant Development Application SSD 5778-2013 and do not form part of this development application. Building forms shown within parameter boxes are illustrative only and do not form part of this development application. They are shown for information and broader illustrative purposes.

21

LEGEND:

Key Building

View Direction (50mm Camera)

Parameter Boxes in the

Haymarket Precinct

