

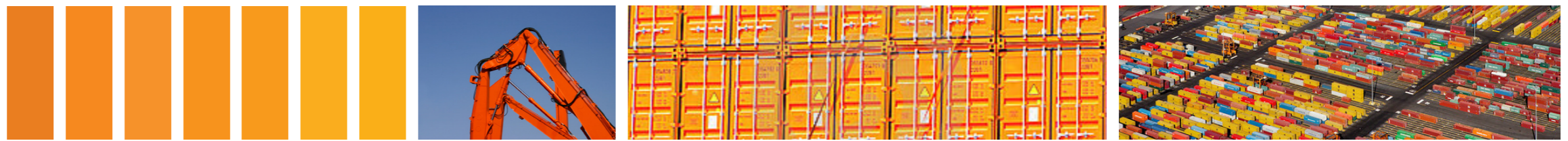
4.0 NORTH WEST PLOT DETAILED DESIGN RESPONSE

4.6 External Finishes & Materials

The external finishes for the proposed building have been selected to address the architectural intent, life cycle/span and maintenance, sourcing leading external finishes technologies, environmental performance and impact as well as warranty and procurement considerations.



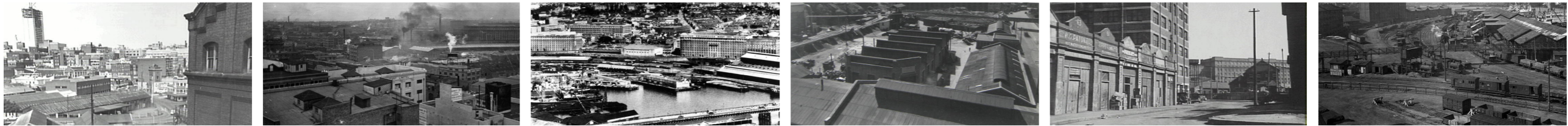
The overall material and finishes selection for the project relates to the commercial and car park function of the building consisting primarily of paint finished composite metal panels, and metal perforated/mesh panels combined with performance glazing. A unique colour diversity is proposed as a key aesthetic strategy for the building intended to generate a dynamic and striking visual composition for the development. The colour selection and appropriation is designed to visually delight within the strong civic/public nature of the precinct as well as relate in a subtle manner to the striking colour use featured throughout the core SICEEP master plan architecture of the proposed Theatre, and Convention Centre. In general terms, a simple overall colour strategy designated to the four facades of the building has been adopted. A general “background” façade colour palette of metallic silver and matt platinum combined with black silicon joints and seams is proposed for the north and south facades. In contrast, the east and west facades are proposed as a predominately white to metallic dark grey/black colour range. Here, the material finish and colour is represented in a metallic silver paint finish for the vertical sunscreen blades combined with curtain wall performance glazing. Within these elevations, all spandrel panels are a “shadow box” box profile to visually match the office vision glass colour. A selected colour range of white, grey, charcoal and black as a tonal diversity specific to the east and west elevations combined with perforated metal panels constitute the façade treatment to the multi-storey car park levels.



CONTEMPORARY MARITIME REFERENCE



MID CENTURY RAIL & PORT INDUSTRIES



MID CENTURY PORT WAREHOUSES



METAL FINISH MATERIAL PALETTE



BRICK / MASONRY MATERIAL PALETTE



HISTORIC PRECINCT REFERENCE

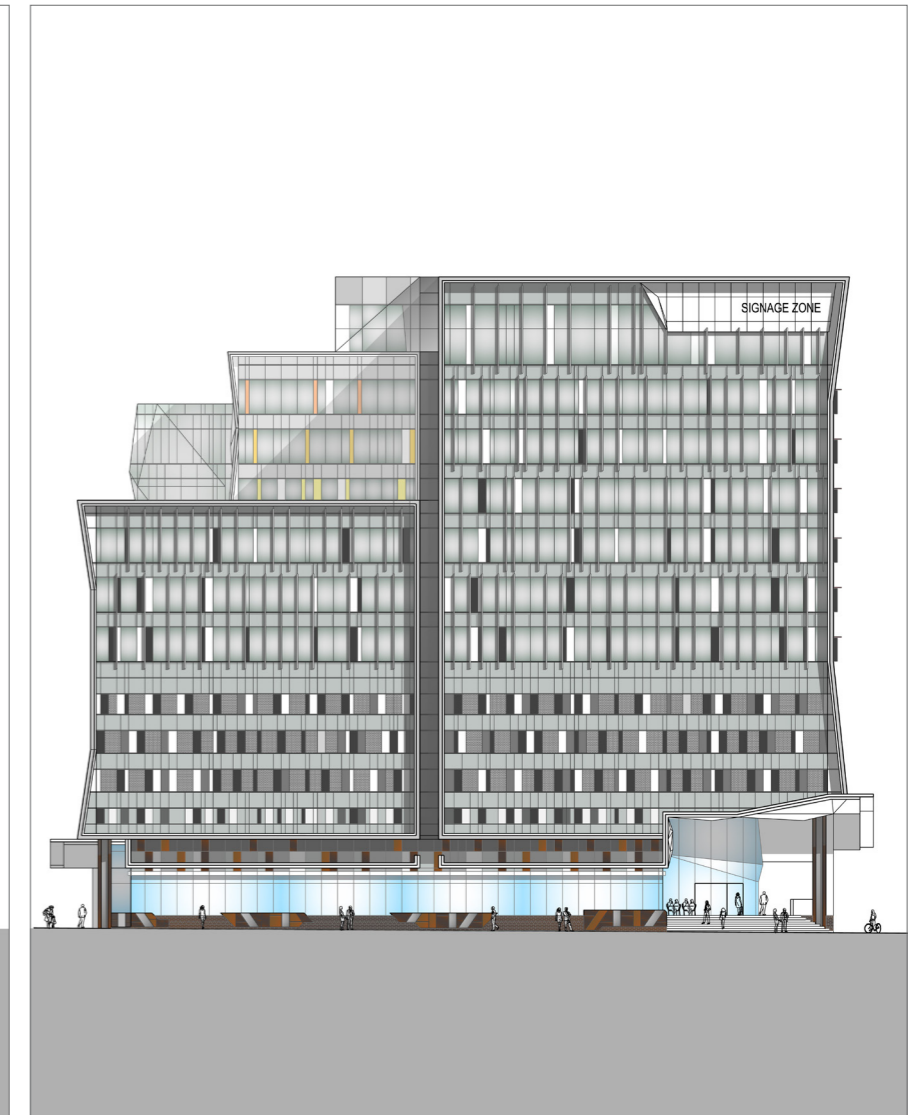
Overall building articulation is predominately represented by expression of the stepped massing from north to south and the façade frame expressions east and west. Greater detail and articulation are designated by the external passive solar control measures which are predominately horizontal sunscreens at the north elevation office levels and a series of vertical sunscreens designated to the east and west elevations.

A level of colour intensity and a strong representation of materiality is planned for the ground level frontages to enliven and enrich the ground plane presentation and visual dynamic. A base/ground plane colour and material palette ranging from feature corten and galvanized metal plate panels with stainless steel highlights combined with a masonry tile/brick finishes is proposed. The feature metal and masonry finishes will be designated to key entry areas, feature walls and up-stands where distant view lines are possible and key public interface frontages are planned.

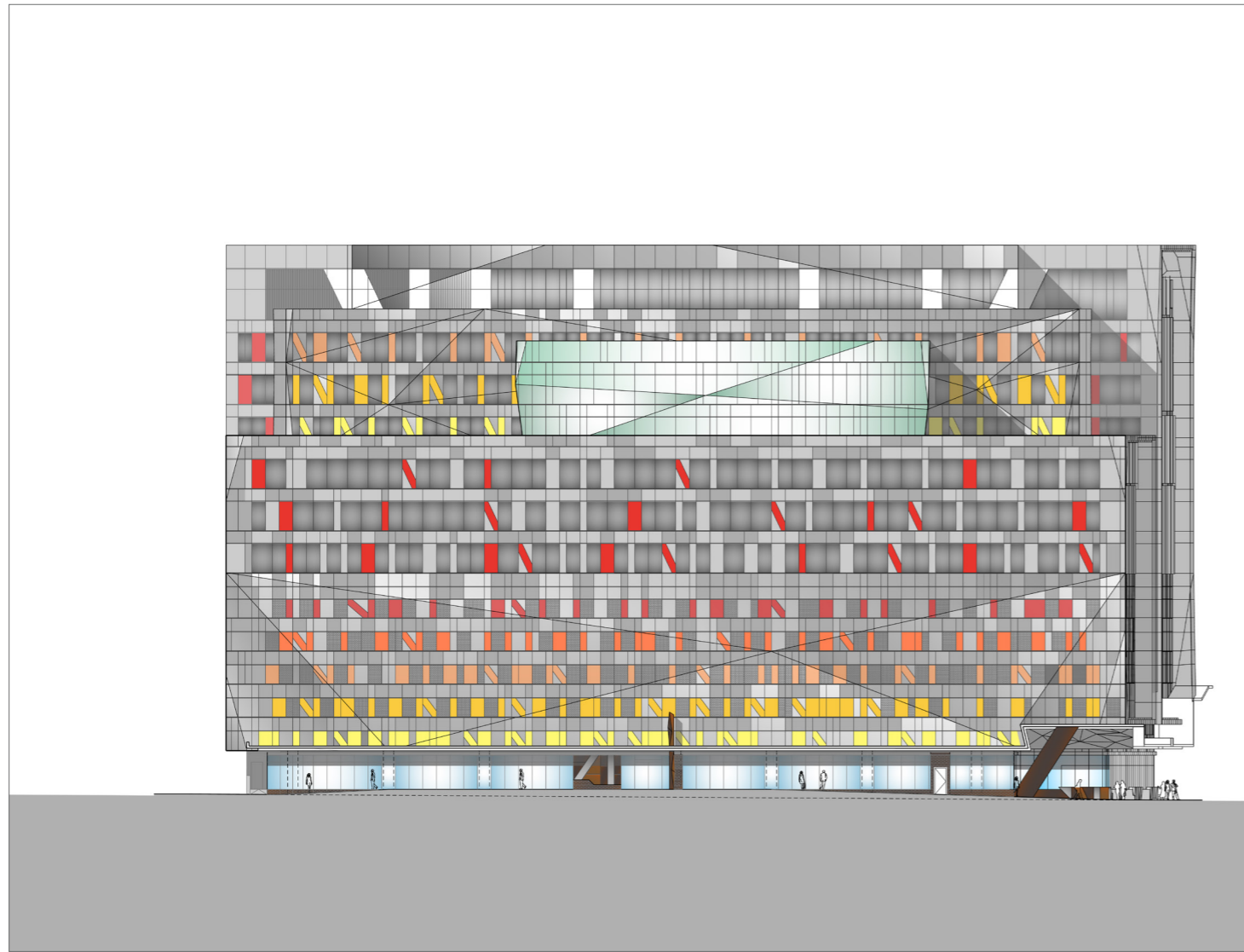
Along the Dickson Lane frontage, activated retail frontage treatment will be determined by a fit-out DA submission process involving selected retail operators/tenants. The intent is to encourage “diversity of treatment” to these frontages to be embraced by retail operators to create a variety of frontage presentation, design and materials. Diversity in the design of awnings and canopies along the retail frontages will also be promoted as part of this philosophy.



NORTH ELEVATION



EAST ELEVATION



SOUTH ELEVATION



WEST ELEVATION



NW PLOT PERSPECTIVE ILLUSTRATING INDICATIVE EXTERNAL FINISHES