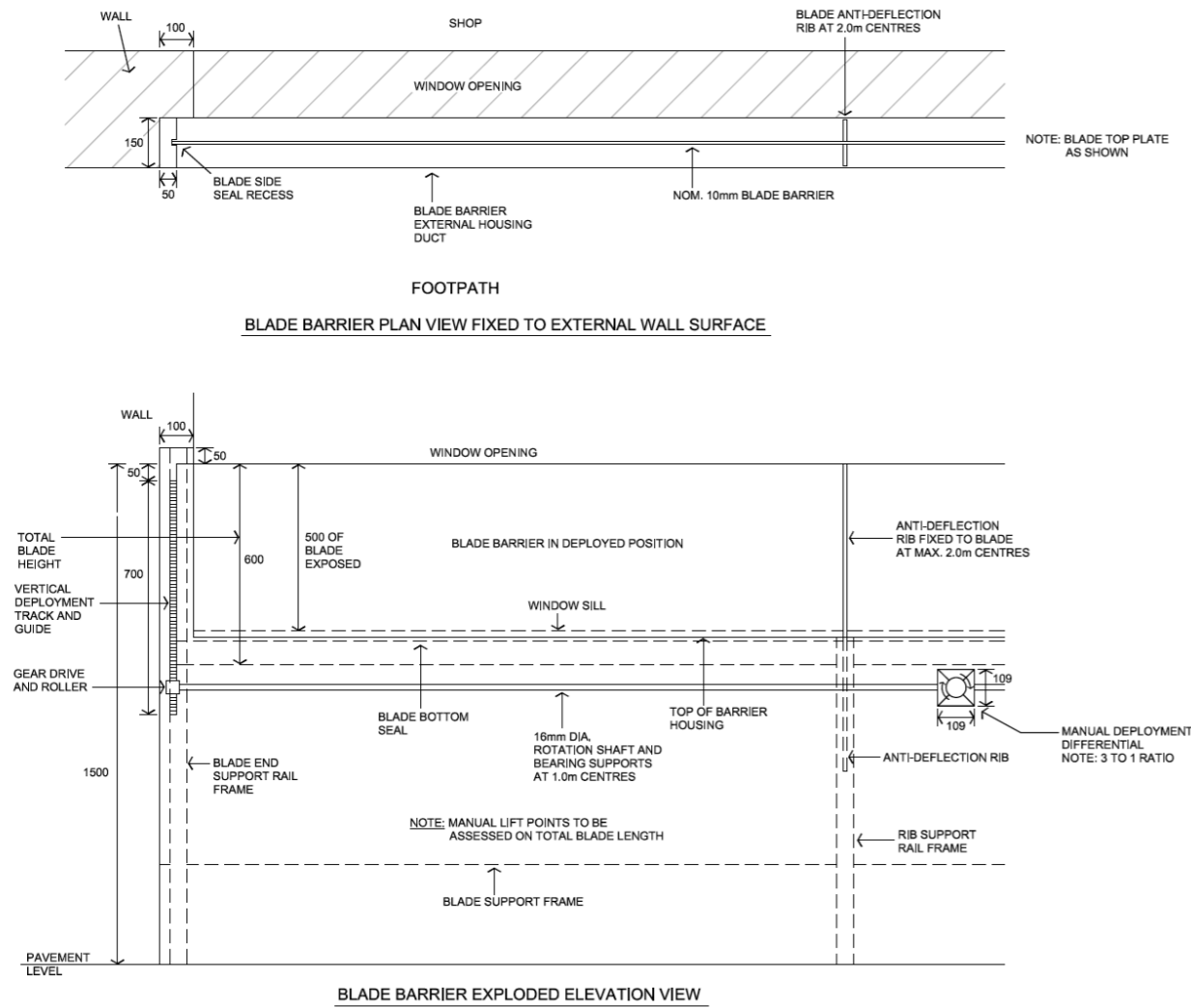


2. "Pop Up" blade barriers that rise from within the masonry to increase the flood protection height of a window hob wall. The barriers can be ratcheted up by hand in less than 60 seconds.

Design Drawing Excerpts

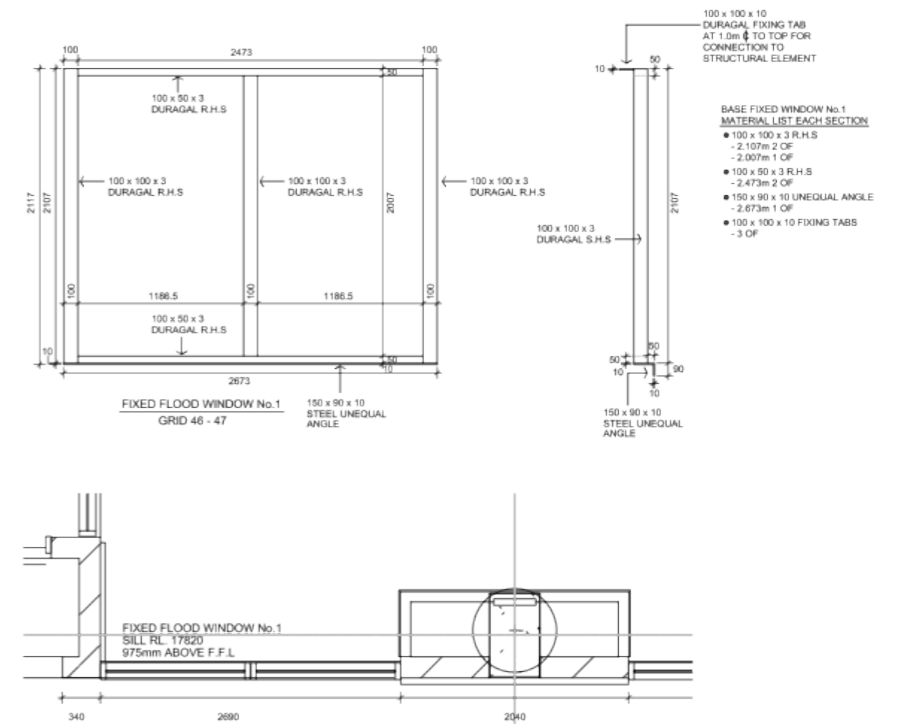


Installed System Photographs



3. Steel framed, full height, structurally anchored flood windows consisting of impact resistant steel frames combined with high strength glass laminates fixed with watertight seals. Corrosion resistant stainless steel frames are optional.

Design Drawing Excerpts



Installed System Photographs

