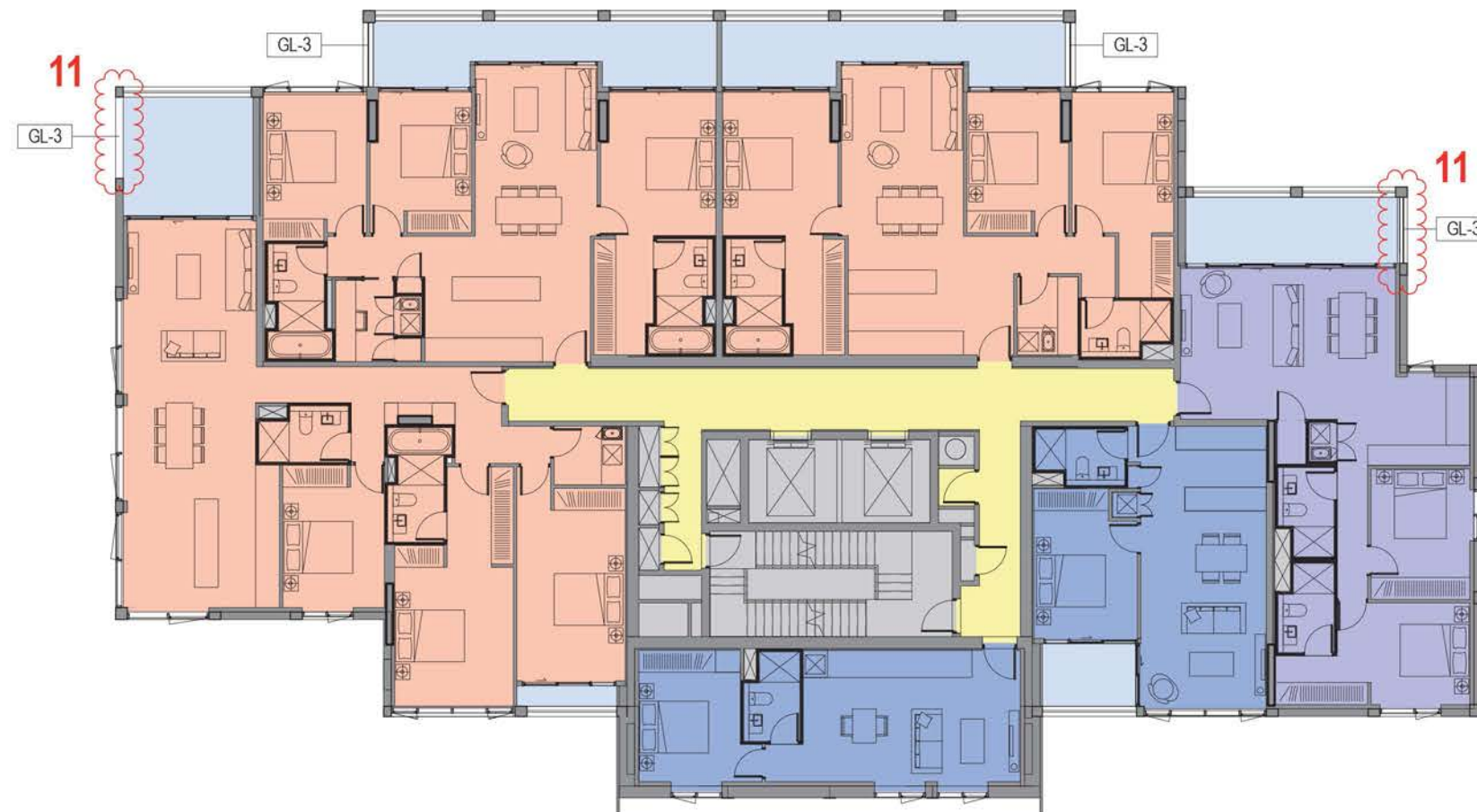


KEY PLAN



Legend

- 1B
- 1B_S
- 2B
- 3B
- Balcony
- Carpark
- Circulation/Lobby
- Retail
- Services/Storage

11
GL-3: full height privacy screen

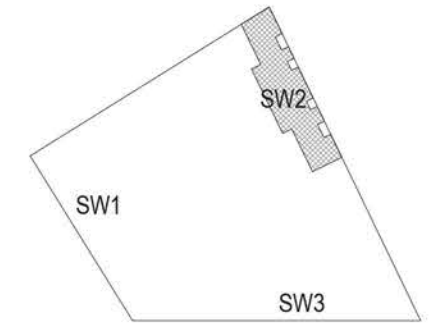


7428A SK_053 P 12
 PLANNING AMENDMENT 13/04/2015
 1:200 @ A3
 0 2 4 6M

DENTON
 CORKER
 MARSHALL

THE HAYMARKET
 LEND LEASE DEVELOPMENT

DESIGN DEVELOPMENT
 SOUTH WEST PLOT
 SW1 UPPER TOWER PLAN -
 LEVEL 24



KEY PLAN



Legend

- ST
- 1B
- 1B_S
- 2B
- 3B
- Balcony
- Carpark
- Circulation/Lobby
- Services/Storage

GL-10: Glazed sliding balcony screen system

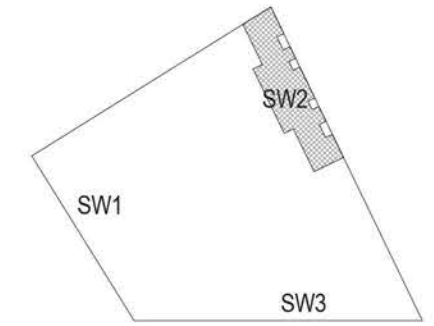


7428A SK_042
 PLANNING AMENDMENT P 10
 1:200 @ A3 13/04/2015
 0 2 4 8M

DENTON
 CORKER
 MARSHALL

THE HAYMARKET
 LEND LEASE DEVELOPMENT

DESIGN DEVELOPMENT
 SOUTH WEST PLOT
 SW2 TYPICAL PODIUM PLAN -
 LEVEL 02-04



KEY PLAN



Legend

- 1B
- 1B_S
- 2B
- 3B
- Balcony
- Carpark
- Circulation/Lobby
- Retail
- Services/Storage

GL-10: Glazed sliding balcony screen system

AL-3: Aluminium canopy; light grey colour, dark grey colour support rods

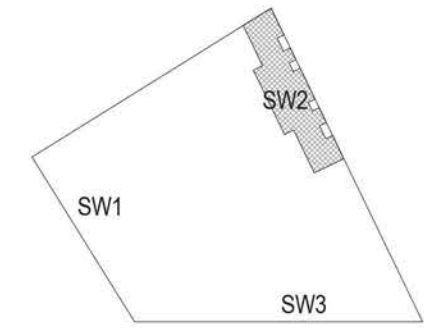


7428A SK_043
PLANNING AMENDMENT P 10
1:200 @ A3 13/04/2015
0 2 4 8M

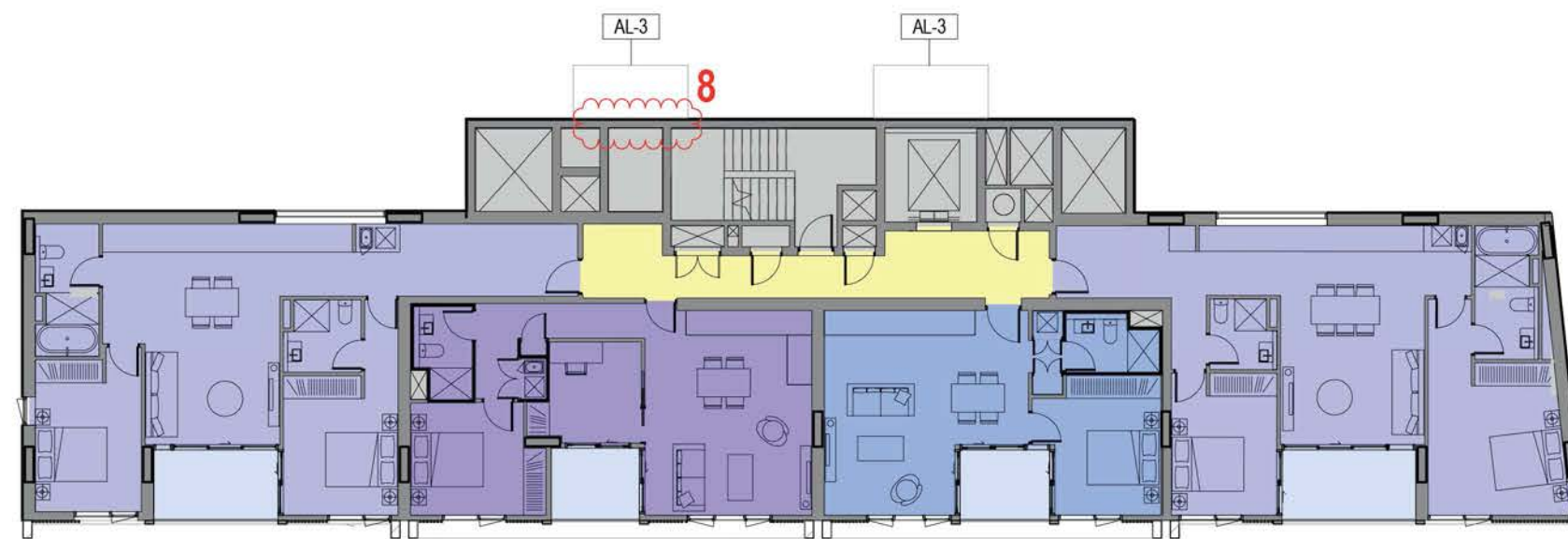
DENTON
CORKER
MARSHALL

THE HAYMARKET
LEND LEASE DEVELOPMENT

DESIGN DEVELOPMENT
SOUTH WEST PLOT
SW2 PODIUM ROOF PLAN -
LEVEL 5



KEY PLAN



Legend

- 1B
- 1B_S
- 2B
- 3B
- Balcony
- Carpark
- Circulation/Lobby
- Retail
- Services/Storage

AL-3: Aluminium canopy; light grey colour, dark grey colour support rods



7428A SK_052
 PLANNING AMENDMENT P 10
 1:200 @ A3 13/04/2015
 0 2 4 8M

DENTON
 CORKER
 MARSHALL

THE HAYMARKET
 LEND LEASE DEVELOPMENT

DESIGN DEVELOPMENT
 SOUTH WEST PLOT
 SW2 TYPICAL PLAN - LEVEL
 06-07



GL-10

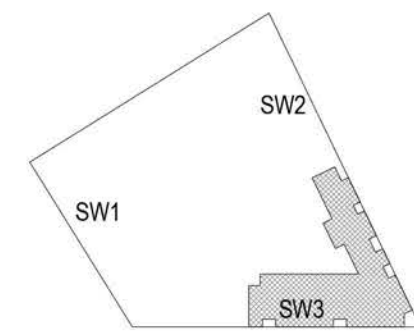
GL-10

GL-10

GL-10

GL-10

4



KEY PLAN

GL-10: Glazed sliding balcony screen system

Legend

- 1B
- 1B_S
- 2B
- 3B
- Balcony
- Carpark
- Circulation/Lobby
- Retail
- Services/Storage



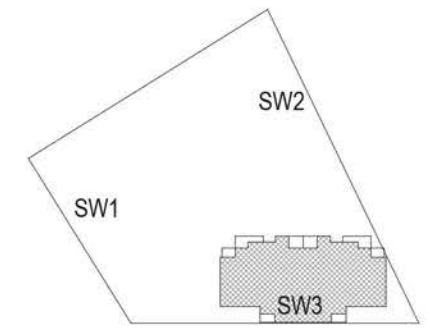
7428A SK_04
 PLANNING AMENDMENT
 1:200 @ A3
 0 2 4 8M

P 11
 13/04/2015

**DENTON
 CORKER
 MARSHALL**

**THE HAYMARKET
 LEND LEASE DEVELOPMENT**

**DESIGN DEVELOPMENT
 SOUTH WEST PLOT
 SW3 TYPICAL PODIUM PLAN -
 LEVEL 01-04**



KEY PLAN



Legend

- 1B
- 1B_S
- 2B
- 3B
- Balcony
- Carpark
- Circulation/Lobby
- Retail
- Services/Storage

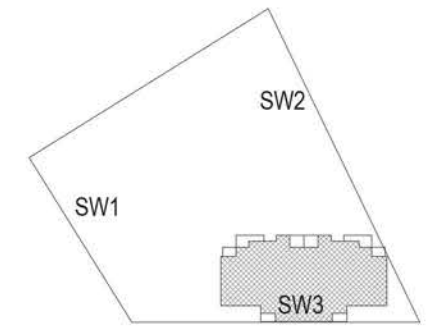


7428A SK_045 P 10
 PLANNING AMENDMENT 13/04/2015
 1:200 @ A3
 0 2 4 6M

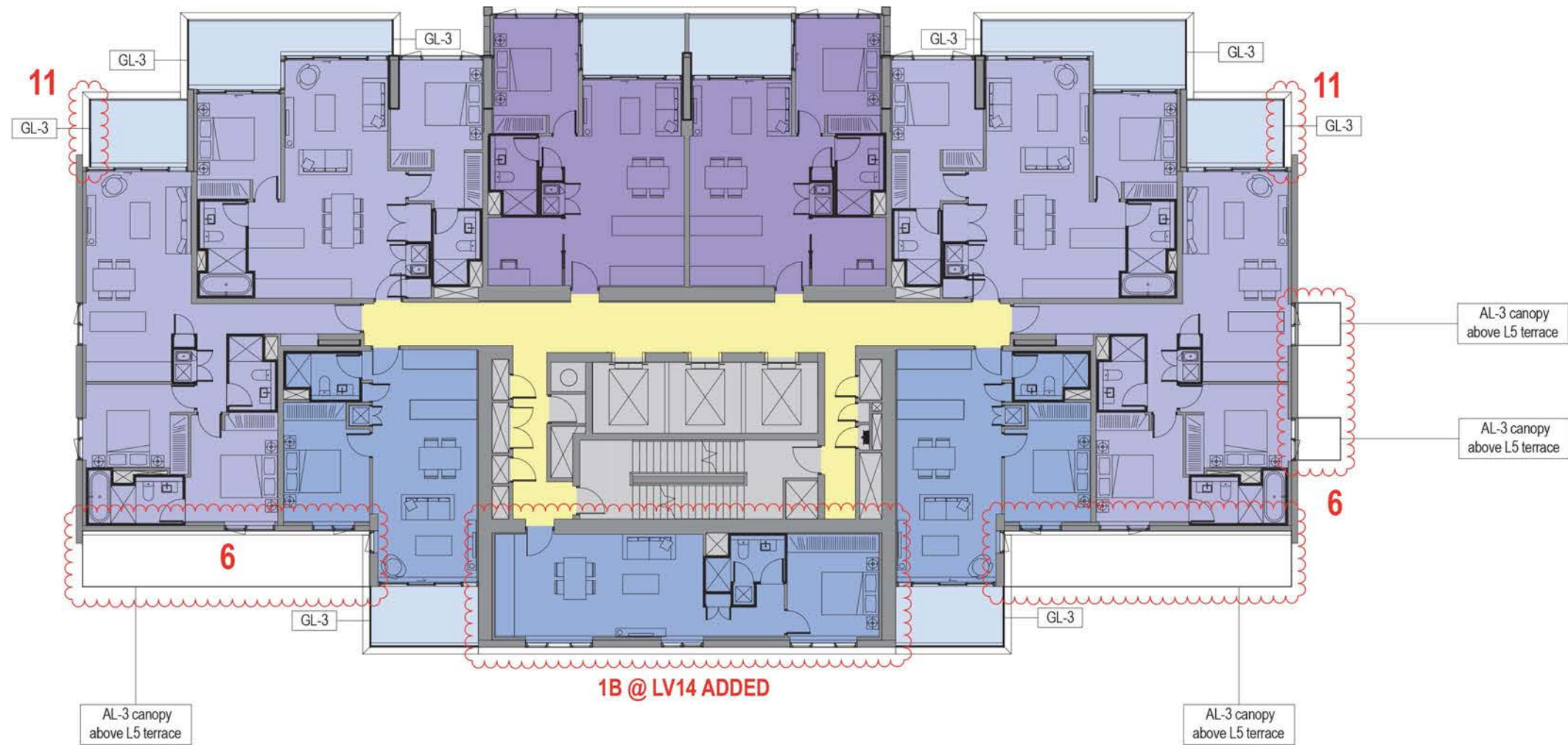
DENTON
 CORKER
 MARSHALL

THE HAYMARKET
 LEND LEASE DEVELOPMENT

DESIGN DEVELOPMENT
 SOUTH WEST PLOT
 SW3 PODIUM ROOF PLAN -
 LEVEL 5



KEY PLAN



Legend

- 1B
- 1B_S
- 2B
- 3B
- Balcony
- Carpark
- Circulation/Lobby
- Retail
- Services/Storage

11
GL-3: full height privacy screen



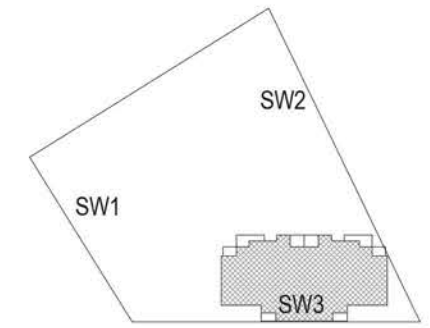
7428A SK_054
PLANNING AMENDMENT
1:200 @ A3
0 2 4 8M

P 11
13/04/2015

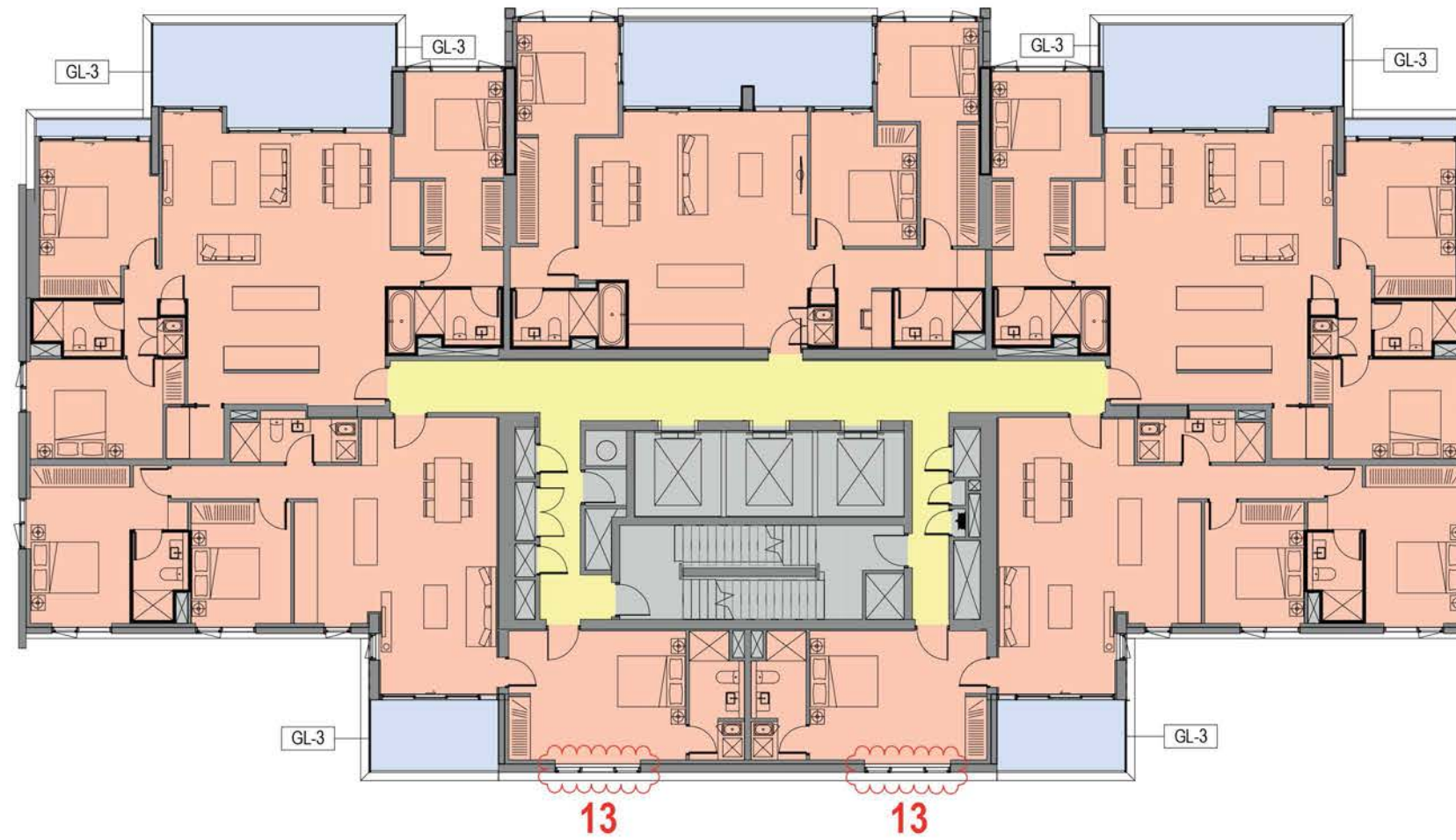
DENTON
CORKER
MARSHALL

THE HAYMARKET
LEND LEASE DEVELOPMENT

DESIGN DEVELOPMENT
SOUTH WEST PLOT
SW3 TYPICAL TOWER PLAN
LEVELS 06-36



KEY PLAN



Legend

- 1B
- 1B_S
- 2B
- 3B
- Balcony
- Carpark
- Circulation/Lobby
- Retail
- Services/Storage

11

GL-3: full height privacy screen

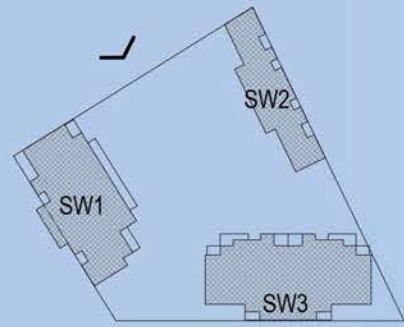


7428A SK_055
 PLANNING AMENDMENT P 11
 1:200 @ A3 13/04/2015
 0 2 4 6M

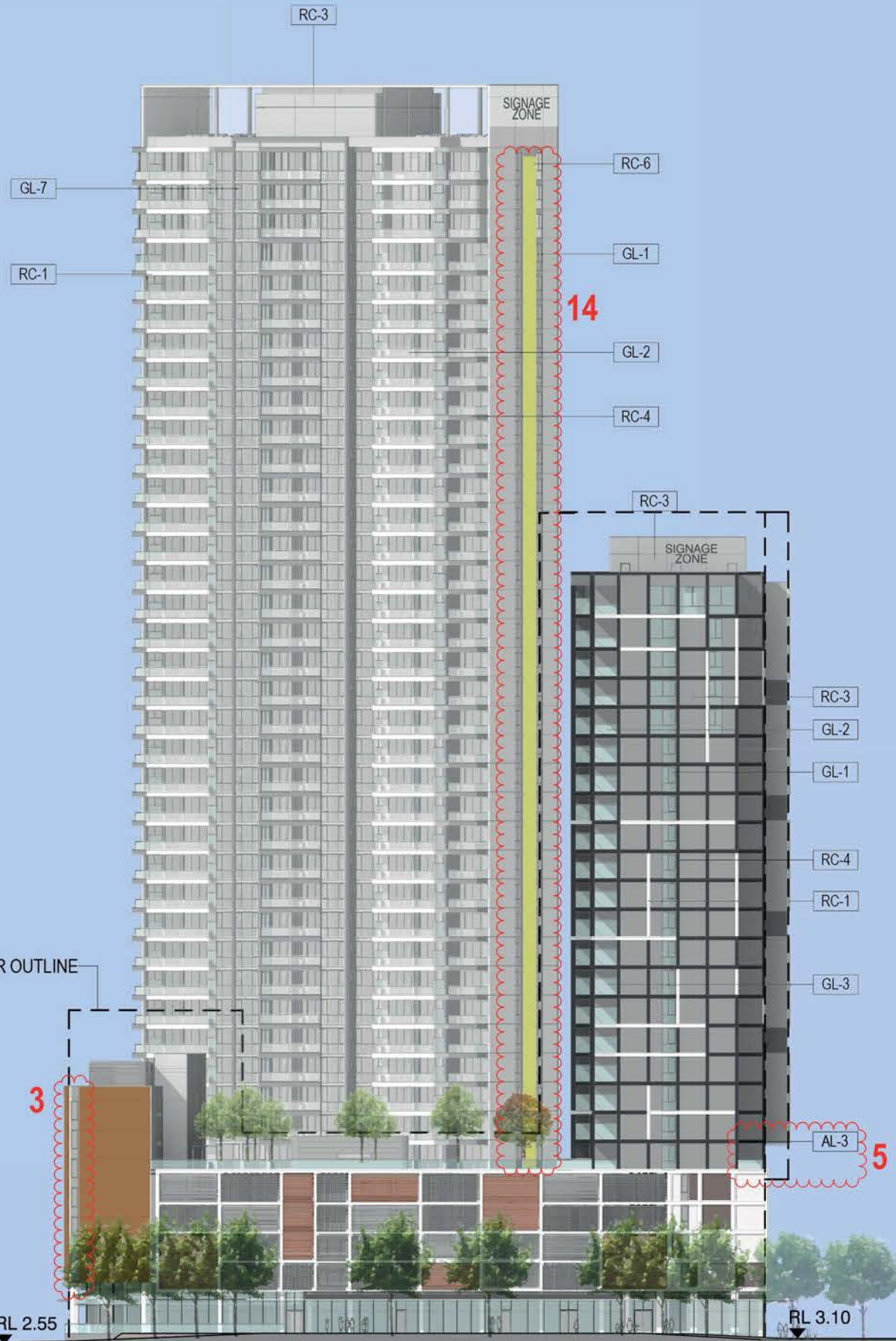
DENTON
 CORKER
 MARSHALL

THE HAYMARKET
 LEND LEASE DEVELOPMENT

DESIGN DEVELOPMENT
 SOUTH WEST PLOT
 SW3 UPPER TOWER PLAN
 LEVELS 37-39



KEY PLAN



TOP OF SW3 RL 137175

L40	RL 130425
L39	RL 126925
L38	RL 123825
L37	RL 120725
L36	RL 117225
L35	RL 114125
L34	RL 111025
L33	RL 107925
L32	RL 104825
L31	RL 101725
L30	RL 98625
L29	RL 95525
L28	RL 92425
L27	RL 89325
L26	RL 86225
L25	RL 83125
L24	RL 80025
L23	RL 76925
L22	RL 73825
L21	RL 70725
L20	RL 67625
L19	RL 64980
L18	RL 61830
L17	RL 58680
L16	RL 55530
L15	RL 52380
L14	RL 49230
L13	RL 46080
L12	RL 42930
L11	RL 39780
L10	RL 36630
L9	RL 33480
L8	RL 30330
L7	RL 27180
L6	RL 24030
L5	RL 20880
L4	RL 17730
L3	RL 14580
L2	RL 11430
L1	RL 8275
LG	RL 3600

RL 33550	TOP OF SW2
RL 28900	L8 SW2
RL 25400	L7 SW2
RL 22500	L6 SW2
RL 19350	L5 SW2
RL 16200	L4 SW2
RL 13050	L3 SW2
RL 9900	L2 SW2
RL 6750	L1 SW2

PARAMETER OUTLINE

N PLOT THE BOULEVARD SW PLOT DARLING DRIVE W1 STUDENT HOUSING

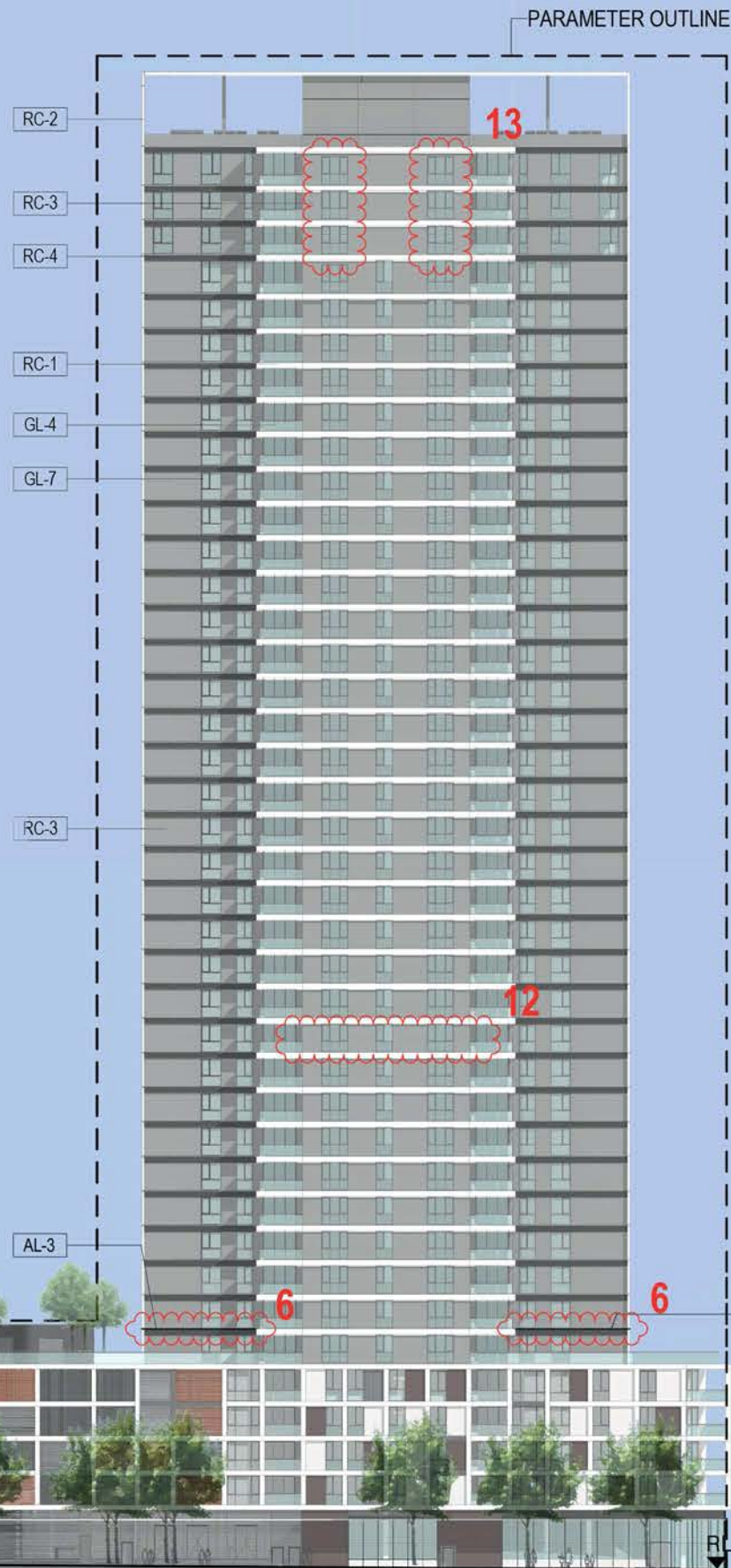
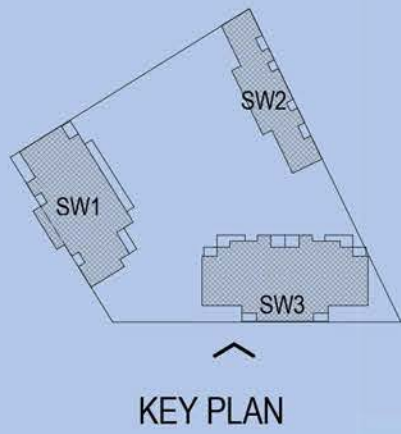


7428A SK_101 P 10
 PLANNING AMENDMENT 13/04/2015
 1:600 @ A3
 0 6 12 18M

DENTON
 CORKER
 MARSHALL

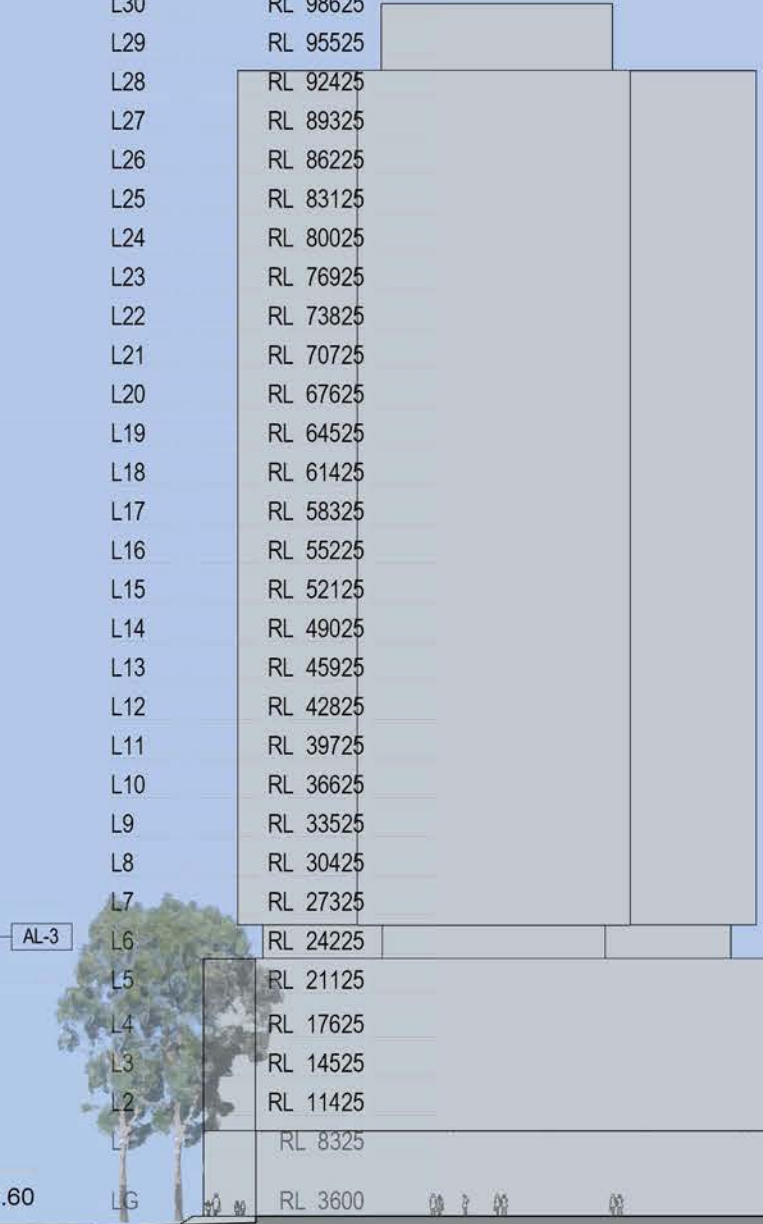
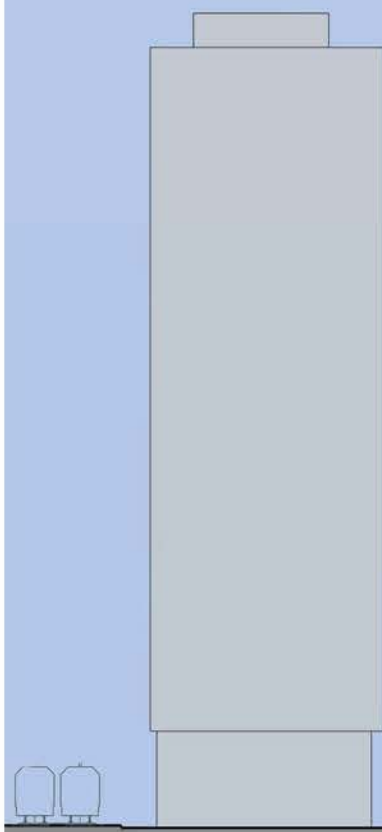
THE HAYMARKET
 LEND LEASE DEVELOPMENT

DESIGN DEVELOPMENT
 SOUTH WEST PLOT
 NORTH ELEVATION



TOP OF SW3 RL 137175

L40	RL 130425
L39	RL 126925
L38	RL 123825
L37	RL 120725
L36	RL 117225
L35	RL 114125
L34	RL 111025
L33	RL 107925
L32	RL 104825
L31	RL 101725
L30	RL 98625
L29	RL 95525
L28	RL 92425
L27	RL 89325
L26	RL 86225
L25	RL 83125
L24	RL 80025
L23	RL 76925
L22	RL 73825
L21	RL 70725
L20	RL 67625
L19	RL 64525
L18	RL 61425
L17	RL 58325
L16	RL 55225
L15	RL 52125
L14	RL 49025
L13	RL 45925
L12	RL 42825
L11	RL 39725
L10	RL 36625
L9	RL 33525
L8	RL 30425
L7	RL 27325
L6	RL 24225
L5	RL 21125
L4	RL 17625
L3	RL 14525
L2	RL 11425
L1	RL 8325
LG	RL 3600



W2 STUDENT HOUSING

DARLING DRIVE

SW PLOT

THE BOULEVARD

SE PLOT

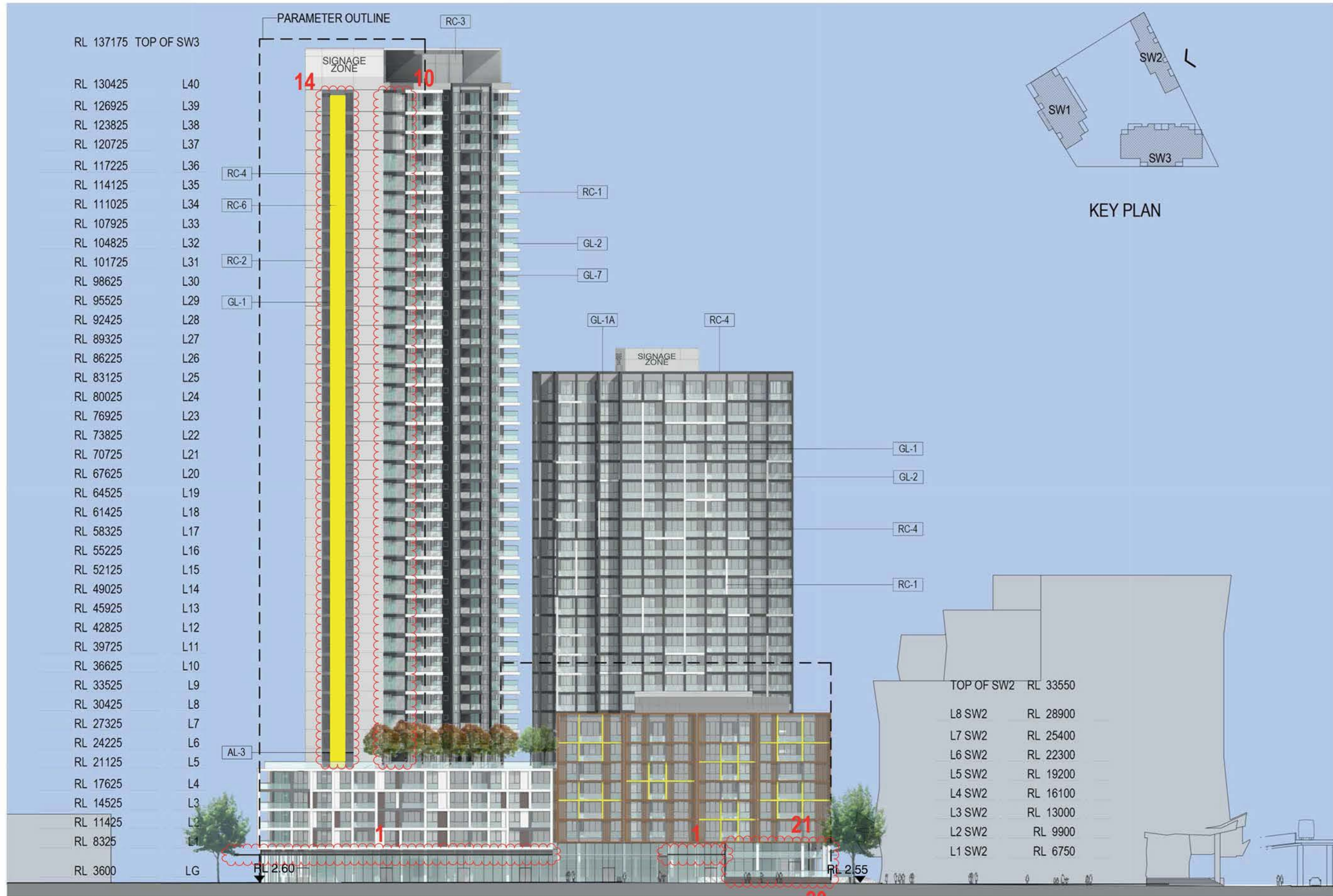


7428A SK_102 P 11
 PLANNING AMENDMENT 13/04/2015
 1:600 @ A3
 0 6 12 18M

DENTON
 CORKER
 MARSHALL

THE HAYMARKET
 LEND LEASE DEVELOPMENT

DESIGN DEVELOPMENT
 SOUTH WEST PLOT
 SOUTH ELEVATION



RL 137175	TOP OF SW3
RL 130425	L40
RL 126925	L39
RL 123825	L38
RL 120725	L37
RL 117225	L36
RL 114125	L35
RL 111025	L34
RL 107925	L33
RL 104825	L32
RL 101725	L31
RL 98625	L30
RL 95525	L29
RL 92425	L28
RL 89325	L27
RL 86225	L26
RL 83125	L25
RL 80025	L24
RL 76925	L23
RL 73825	L22
RL 70725	L21
RL 67625	L20
RL 64525	L19
RL 61425	L18
RL 58325	L17
RL 55225	L16
RL 52125	L15
RL 49025	L14
RL 45925	L13
RL 42825	L12
RL 39725	L11
RL 36625	L10
RL 33525	L9
RL 30425	L8
RL 27325	L7
RL 24225	L6
RL 21125	L5
RL 17625	L4
RL 14525	L3
RL 11425	L2
RL 8325	L1
RL 3600	LG

TOP OF SW2	RL 33550
L8 SW2	RL 28900
L7 SW2	RL 25400
L6 SW2	RL 22300
L5 SW2	RL 19200
L4 SW2	RL 16100
L3 SW2	RL 13000
L2 SW2	RL 9900
L1 SW2	RL 6750

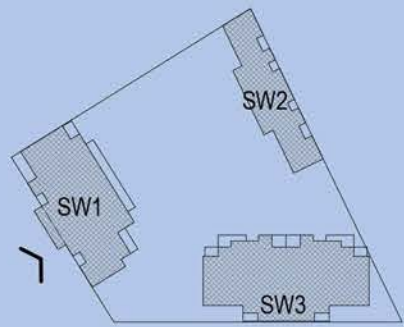


7428A SK_103 P 9
 PLANNING AMENDMENT 13/04/2015
 1:600 @ A3
 0 6 12 18M

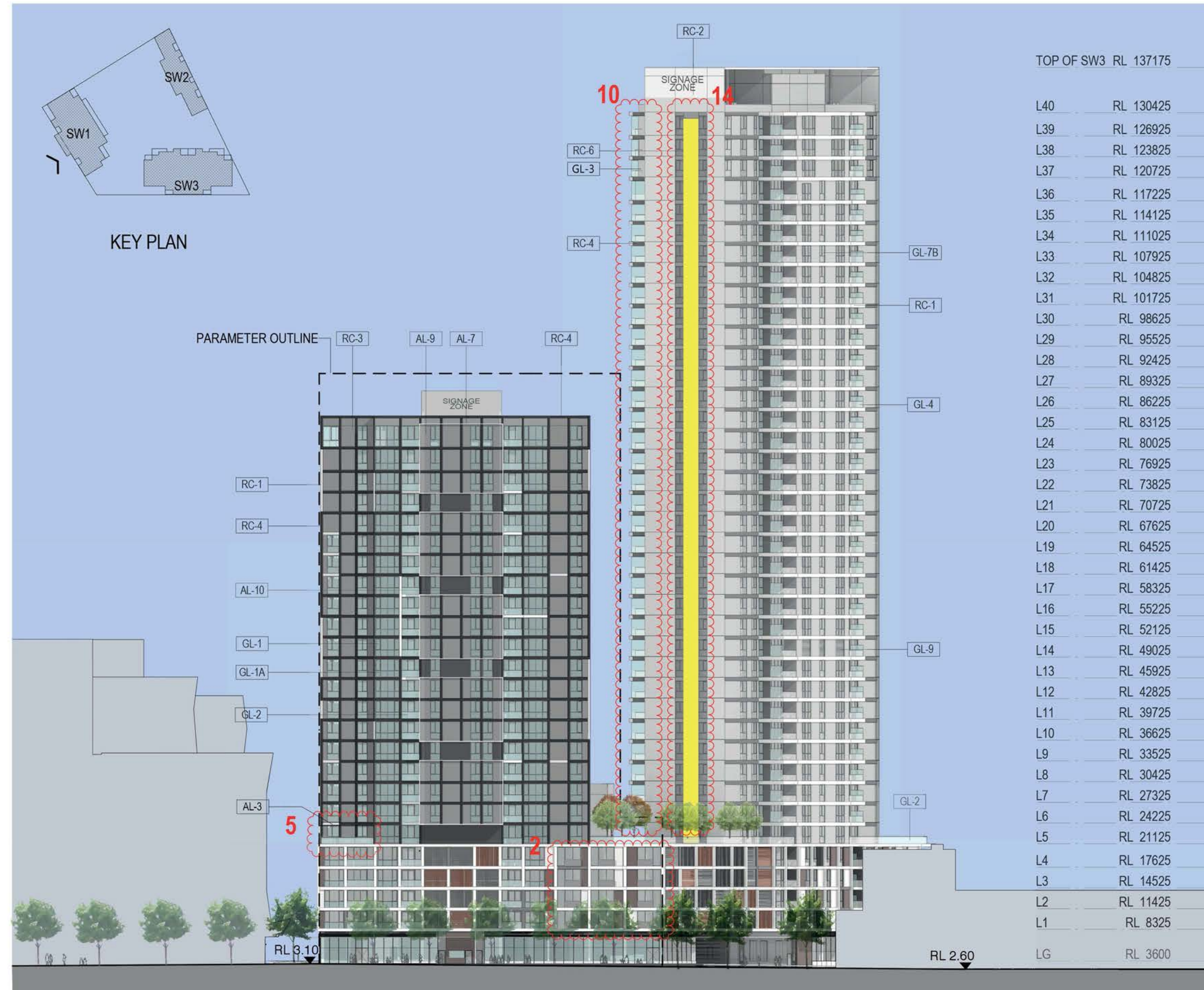
DENTON
 CORKER
 MARSHALL

THE HAYMARKET
 LEND LEASE DEVELOPMENT

DESIGN DEVELOPMENT
 SOUTH WEST PLOT
 EAST ELEVATION



KEY PLAN



TOP OF SW3	RL 137175
L40	RL 130425
L39	RL 126925
L38	RL 123825
L37	RL 120725
L36	RL 117225
L35	RL 114125
L34	RL 111025
L33	RL 107925
L32	RL 104825
L31	RL 101725
L30	RL 98625
L29	RL 95525
L28	RL 92425
L27	RL 89325
L26	RL 86225
L25	RL 83125
L24	RL 80025
L23	RL 76925
L22	RL 73825
L21	RL 70725
L20	RL 67625
L19	RL 64525
L18	RL 61425
L17	RL 58325
L16	RL 55225
L15	RL 52125
L14	RL 49025
L13	RL 45925
L12	RL 42825
L11	RL 39725
L10	RL 36625
L9	RL 33525
L8	RL 30425
L7	RL 27325
L6	RL 24225
L5	RL 21125
L4	RL 17625
L3	RL 14525
L2	RL 11425
L1	RL 8325
LG	RL 3600

NW PLOT

DICKSON'S LANE

SW PLOT

HAY STREET

UTS BUILDING 5

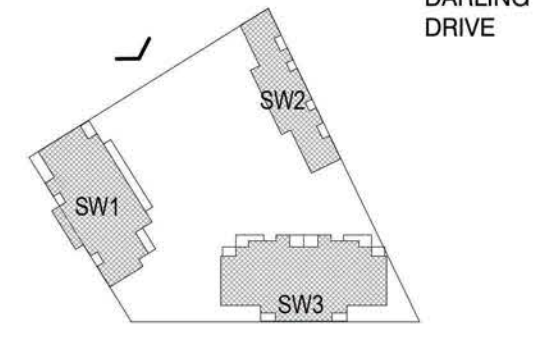
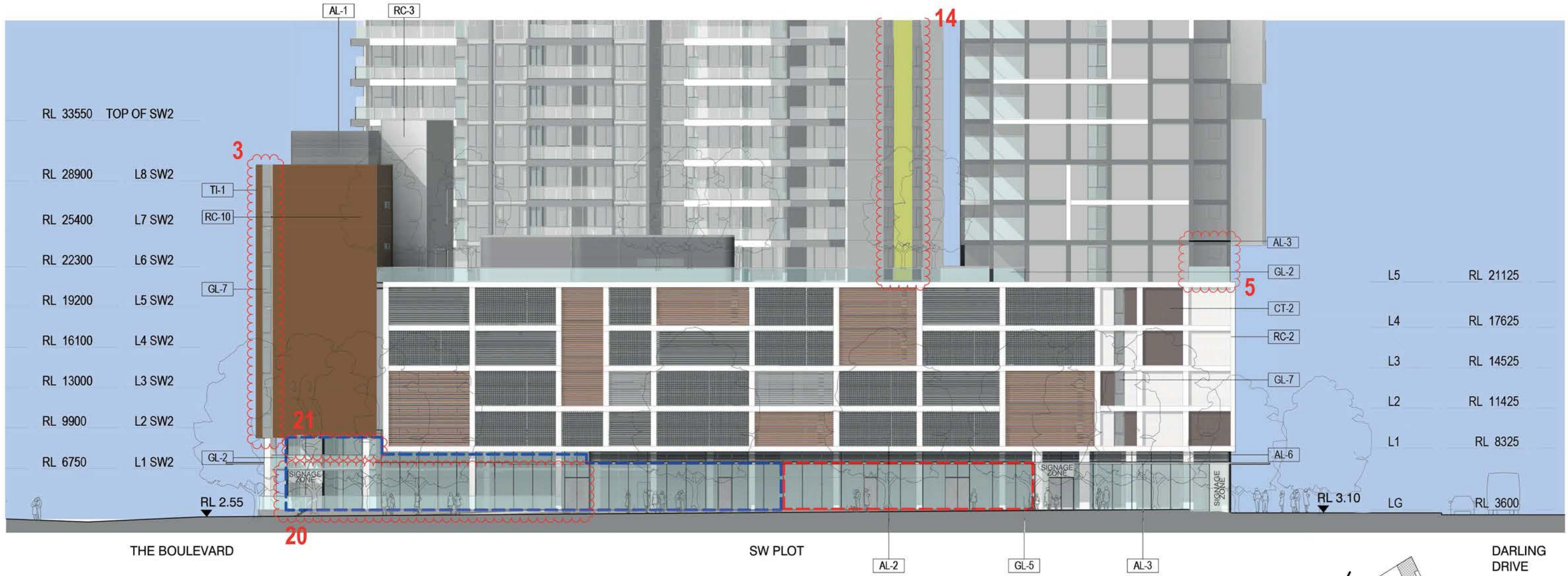


7428A SK_104 P 9
 PLANNING AMENDMENT 13/04/2015
 1:600 @ A3
 0 6 12 18M

DENTON
 CORKER
 MARSHALL

THE HAYMARKET
 LEND LEASE DEVELOPMENT

DESIGN DEVELOPMENT
 SOUTH WEST PLOT
 WEST ELEVATION



KEY PLAN

- IQ hub (Potential) signage illustrative to future DA
- Retail shopfront illustrative to future DA

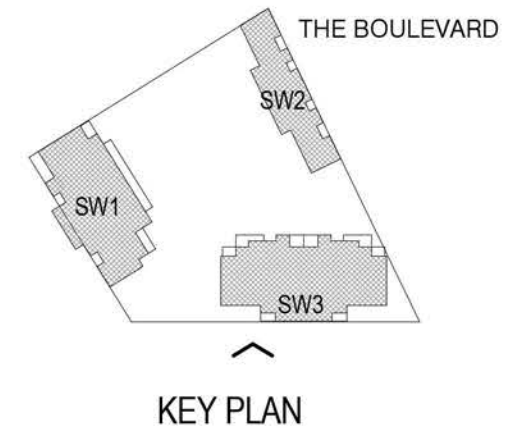




7428A SK_111 P 9
 PLANNING AMENDMENT 13/04/2015
 1:300 @ A3
 0 3 6 9M

DENTON
 CORKER
 MARSHALL


THE HAYMARKET
 LEND LEASE DEVELOPMENT

DESIGN DEVELOPMENT
 SOUTH WEST PLOT
 NORTH PODIUM ELEVATION



 IQ hub (Potential) signage illustrative to future DA
 Retail shopfront illustrative to future DA

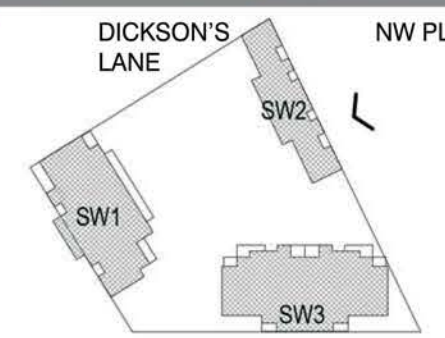
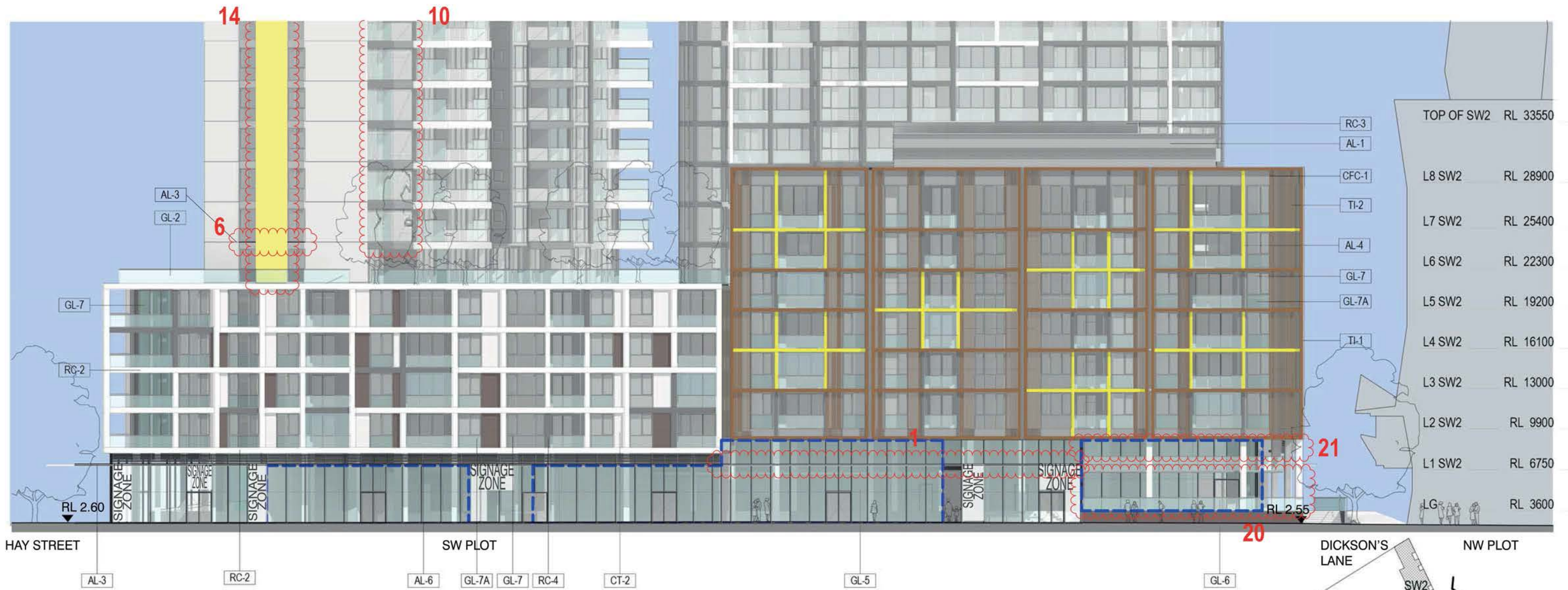



7428A SK_112 P 10
 PLANNING AMENDMENT 13/04/2015
 1:300 @ A3


DENTON
 CORKER
 MARSHALL

THE HAYMARKET
 LEND LEASE DEVELOPMENT

DESIGN DEVELOPMENT
 SOUTH WEST PLOT
 SOUTH PODIUM ELEVATION



 Retail shopfront illustrative to future DA

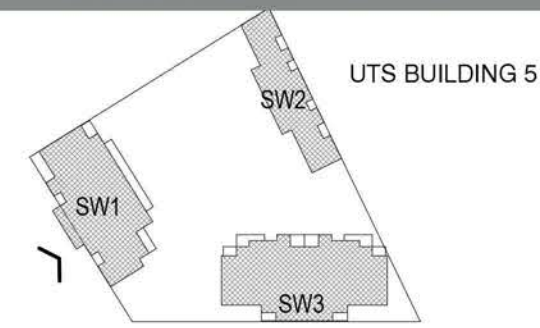
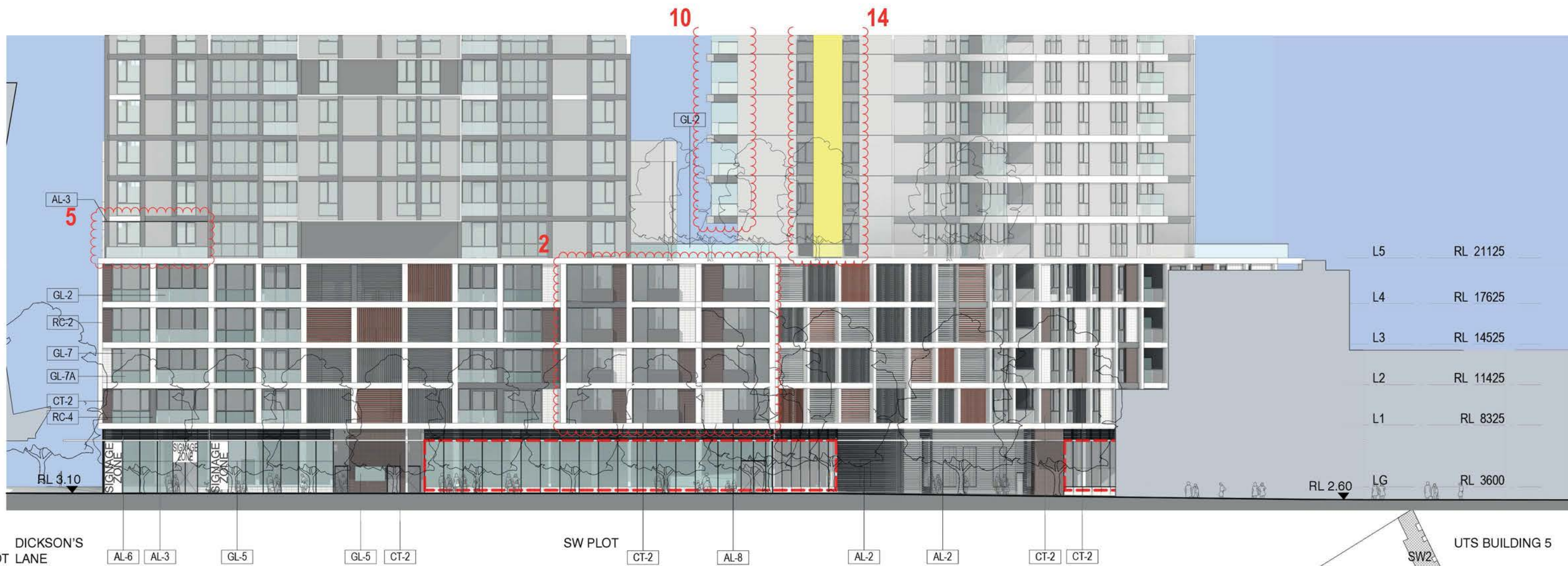


7428A SK_113 P 9
 PLANNING AMENDMENT 13/04/2015
 1:300 @ A3


DENTON
 CORKER
 MARSHALL

THE HAYMARKET
 LEND LEASE DEVELOPMENT

DESIGN DEVELOPMENT
 SOUTH WEST PLOT
 EAST PODIUM ELEVATION



KEY PLAN

- IQ hub (Potential) signage illustrative to future DA
- Retail shopfront illustrative to future DA

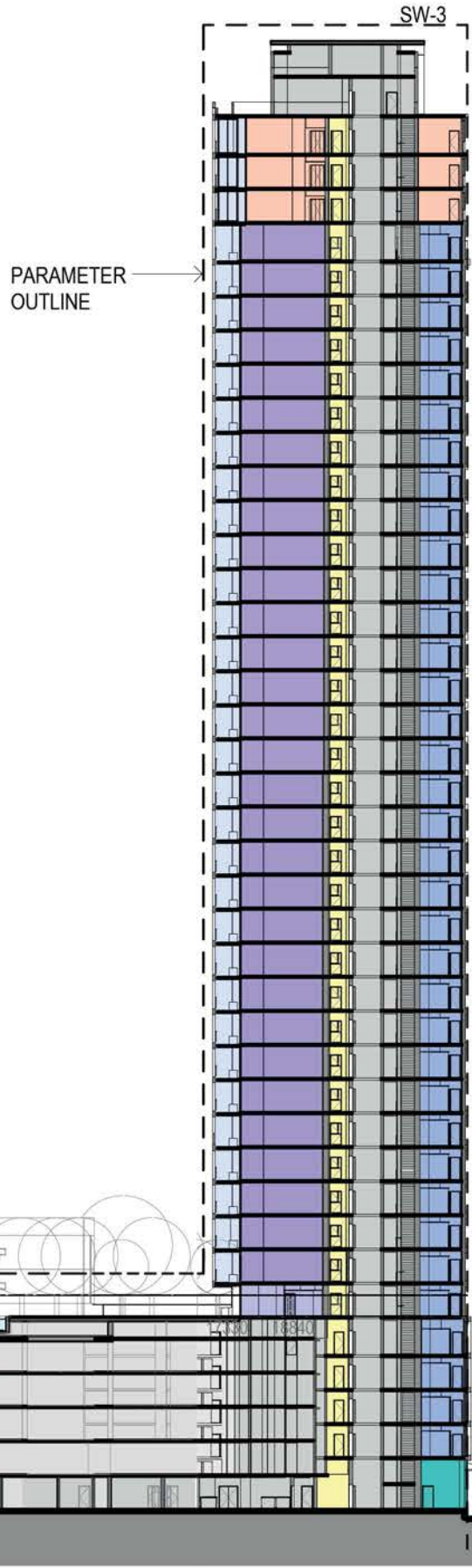
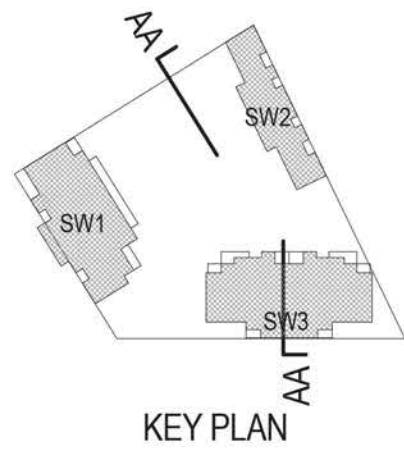


7428A SK_114 P 10
 PLANNING AMENDMENT 13/04/2015
 1:300 @ A3
 0 3 6 9M

DENTON
 CORKER
 MARSHALL

THE HAYMARKET
 LEND LEASE DEVELOPMENT

DESIGN DEVELOPMENT
 SOUTH WEST PLOT
 WEST PODIUM ELEVATION



	TOP OF SW3 RL 137175
L40	RL 130425
L39	RL 126925
L38	RL 123825
L37	RL 120725
L36	RL 117225
L35	RL 114125
L34	RL 111025
L33	RL 107925
L32	RL 104825
L31	RL 101725
L30	RL 98625
L29	RL 95525
L28	RL 92425
L27	RL 89325
L26	RL 86225
L25	RL 83125
L24	RL 80025
L23	RL 76925
L22	RL 73825
L21	RL 70725
L20	RL 67625
L19	RL 64525
L18	RL 61425
L17	RL 58325
L16	RL 55225
L15	RL 52125
L14	RL 49025
L13	RL 45925
L12	RL 42825
L11	RL 39725
L10	RL 36625
L9	RL 33525
L8	RL 30425
L7	RL 27325
L6	RL 24225
L5	RL 21125
L4	RL 17625
L3	RL 14525
L2	RL 11425
L1	RL 8325
LG	RL 3600

RL 21100	PODIUM ROOF
RL 16100	L4 CP
RL 13000	L3 CP
RL 9900	L2 CP
RL 6750	L1 CP
RL 3600	LG



Legend

- 1B
- 1B_S
- 2B
- 3B
- Balcony
- Carpark
- Circulation/Lobby
- Retail
- Services/Storage



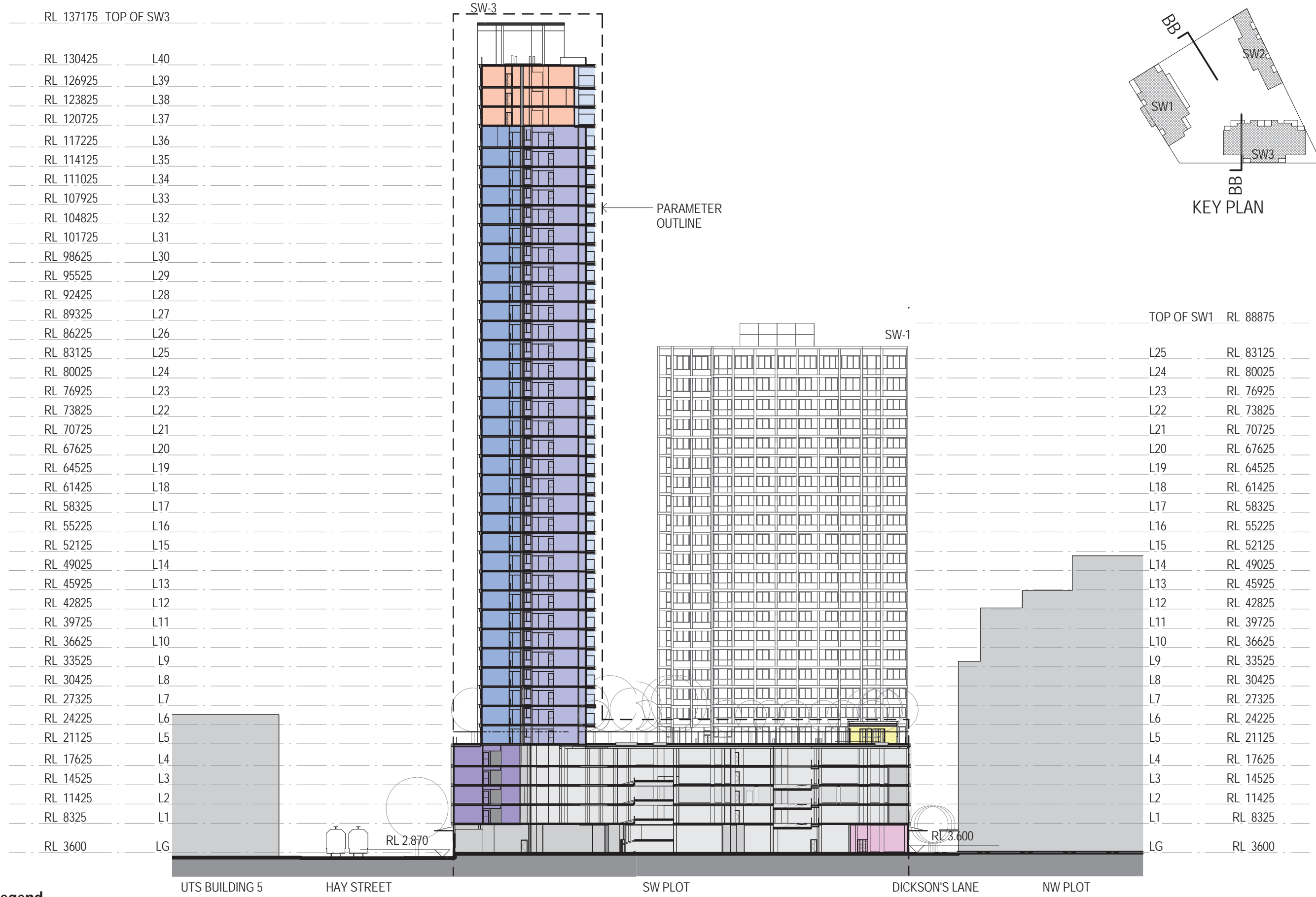
7428A SK_201
 PLANNING AMENDMENT
 1:600 @ A3
 0 6 12 18M

P 7
 13/04/2015

**DENTON
 CORKER
 MARSHALL**

**THE HAYMARKET
 LEND LEASE DEVELOPMENT**

**DESIGN DEVELOPMENT
 SOUTH WEST PLOT
 SECTION AA**



Legend

- 1B
- 1B_S
- 2B
- 3B
- Balcony
- Carpark
- Circulation/Lobby
- Retail
- Services/Storage
- Retail/IQ Hub (Potential)

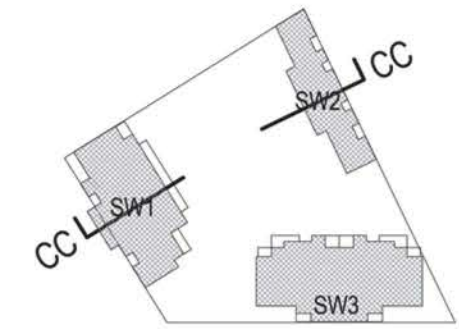


7428A SK_202 P 7
 PLANNING AMENDMENT 13/04/2015
 1:600 @ A3
 0 6 12 18M

**DENTON
 CORKER
 MARSHALL**

THE HAYMARKET
 LEND LEASE DEVELOPMENT

DESIGN DEVELOPMENT
 SOUTH WEST PLOT
 SECTION BB



KEY PLAN



Legend

- 1B
- 1B_S
- 2B
- 3B
- Balcony
- Carpark
- Circulation/Lobby
- Services/Storage

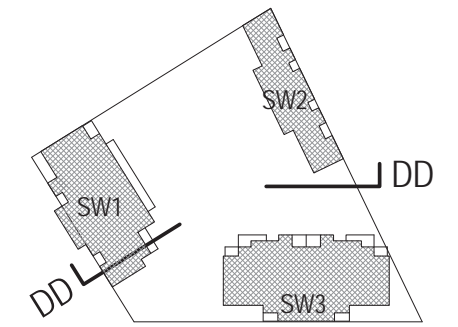


7428A SK_203 P 8
 PLANNING AMENDMENT 13/04/2015
 1:600 @ A3
 0 6 12 18M

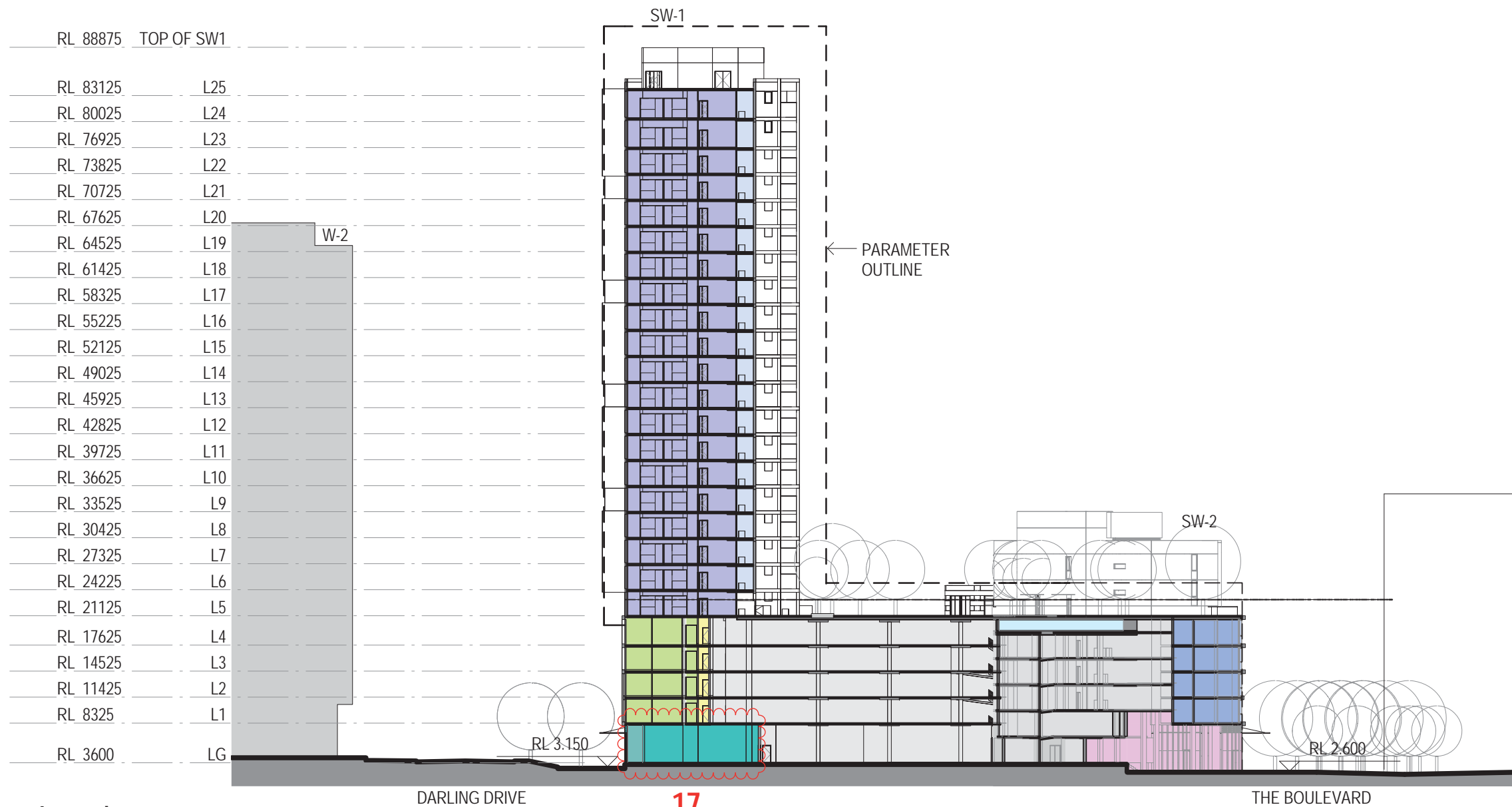
DENTON
 CORKER
 MARSHALL

THE HAYMARKET
 LEND LEASE DEVELOPMENT

DESIGN DEVELOPMENT
 SOUTH WEST PLOT
 SECTION CC



KEY PLAN



Legend

- ST
- 1B
- 1B_S
- 2B
- 3B
- Balcony
- Retail
- Carpark
- Circulation/Lobby
- Services/Storage
- Retail/IQ Hub (Potential)



7428A SK_204 P 8
 PLANNING AMENDMENT 13/04/2015
 1:600 @ A3
 0 6 12 18M

DENTON
 CORKER
 MARSHALL

THE HAYMARKET
 LEND LEASE DEVELOPMENT

DESIGN DEVELOPMENT
 SOUTH WEST PLOT
 SECTION DD