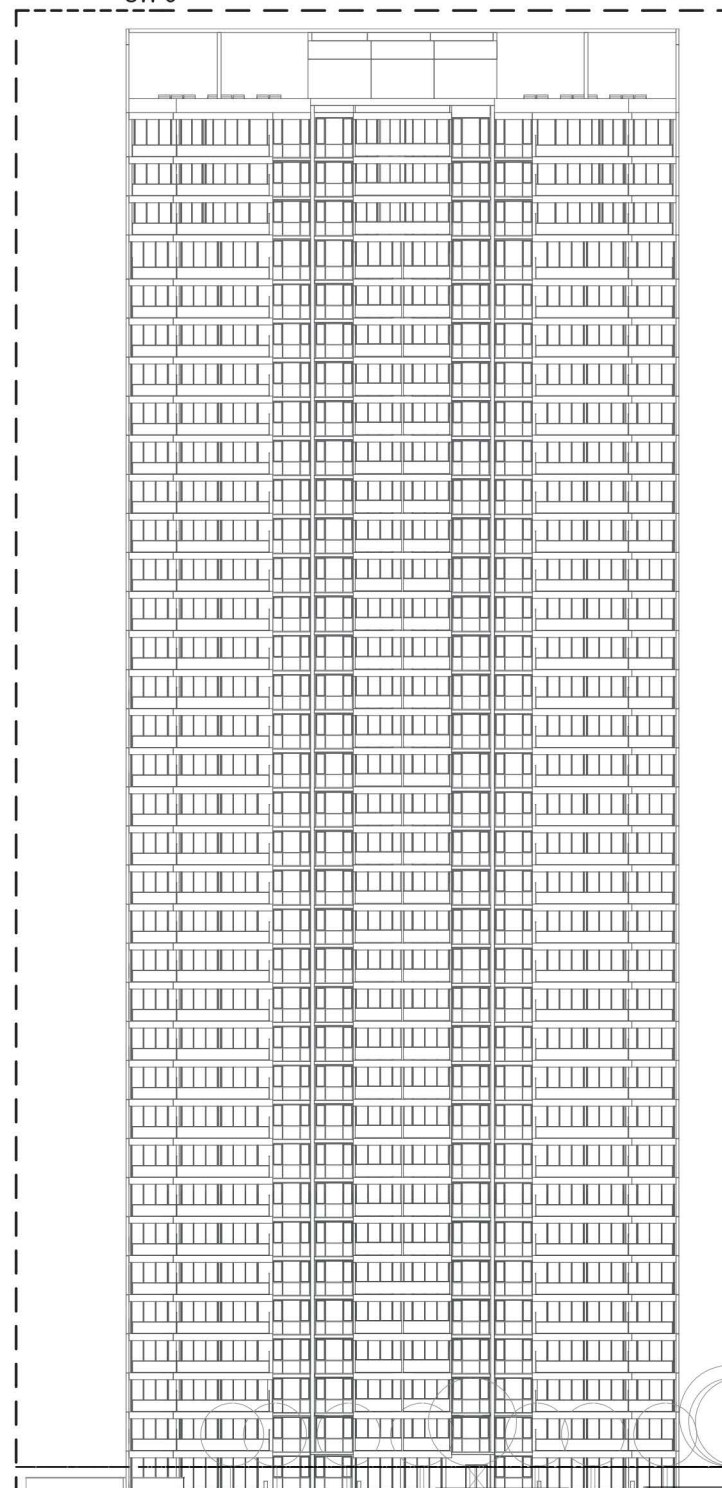


RL 137175 TOP OF SW3

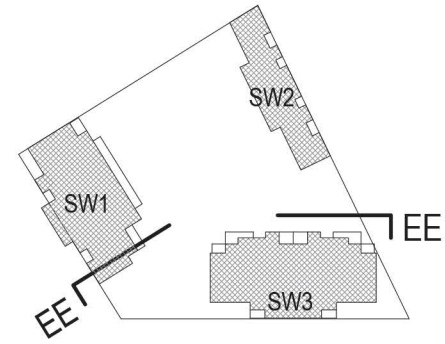
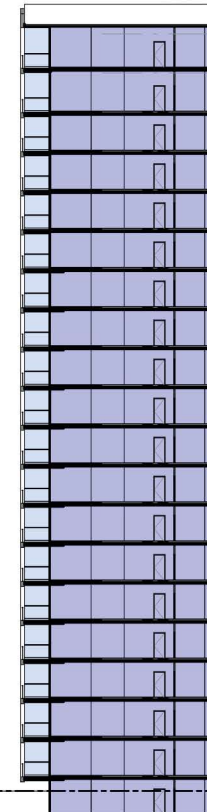
RL 130425	L40
RL 126925	L39
RL 123825	L38
RL 120725	L37
RL 117225	L36
RL 114125	L35
RL 111025	L34
RL 107925	L33
RL 104825	L32
RL 101725	L31
RL 98625	L30
RL 95525	L29
RL 92425	L28
RL 89325	L27
RL 86225	L26
RL 83125	L25
RL 80025	L24
RL 76925	L23
RL 73825	L22
RL 70725	L21
RL 67625	L20
RL 64525	L19
RL 61425	L18
RL 58325	L17
RL 55225	L16
RL 52125	L15
RL 49025	L14
RL 45925	L13
RL 42825	L12
RL 39725	L11
RL 36625	L10
RL 33525	L9
RL 30425	L8
RL 27325	L7
RL 24225	L6
RL 21125	L5
RL 17625	L4
RL 14525	L3
RL 11425	L2
RL 8325	L1
RL 3600	LG

SE-1

SW-3



SW-1



KEY PLAN

TOP OF SW1 RL 88875

L25	RL 83125
L24	RL 80025
L23	RL 76925
L22	RL 73825
L21	RL 70725
L20	RL 67625
L19	RL 64525
L18	RL 61425
L17	RL 58325
L16	RL 55225
L15	RL 52125
L14	RL 49025
L13	RL 45925
L12	RL 42825
L11	RL 39725
L10	RL 36625
L9	RL 33525
L8	RL 30425
L7	RL 27325
L6	RL 24225
L5	RL 21125
L4	RL 17625
L3	RL 14525
L2	RL 11425
L1	RL 8325
LG	RL 3600

SE

RL 2.650

17

RL 3.150

THE BOULEVARD

DARLING DRIVE

Legend

- ST
- 1B
- 1B\_S
- 2B
- 3B
- Balcony
- Retail
- Carpark
- Circulation/Lobby
- Services/Storage
- Retail/IQ Hub (Potential)

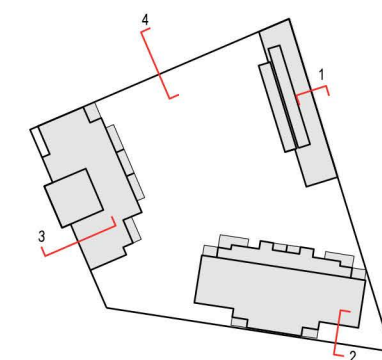


7428A SK\_205 P 7  
 PLANNING AMENDMENT 13/04/2015  
 1:600 @ A3  
 0 6 12 18M

DENTON  
 CORKER  
 MARSHALL

THE HAYMARKET  
 LEND LEASE DEVELOPMENT

DESIGN DEVELOPMENT  
 SOUTH WEST PLOT  
 SECTION EE



**Legend**

- Residential
- Retail
- IQ Hub (potential)
- Lobby
- Circulation
- Services
- Carpark

NOTE: RETAIL CANOPY/ AWNING SUBJECT TO SEPARATE DEVELOPMENT APPLICATION

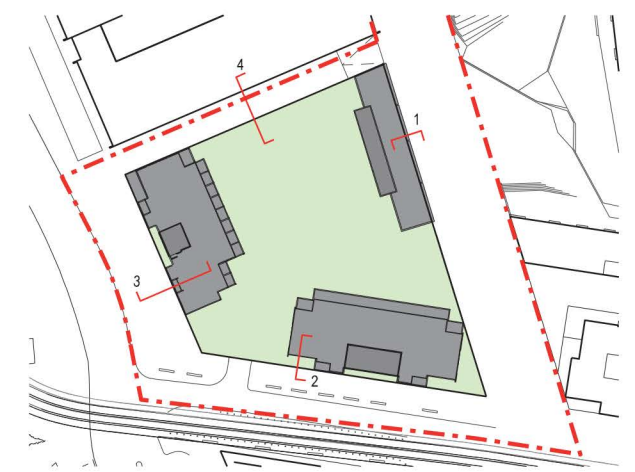


7428A SK\_213 P7  
13/04/2015  
1:200 @ A3  
0 2 10m

DENTON  
CORKER  
MARSHALL

THE HAYMARKET  
LEND LEASE DEVELOPMENT

SOUTH WEST PLOT  
PUBLIC REALM INTERFACE  
SECTION 3 - DARLING DRIVE



**Legend**

- Residential
- Retail
- IQ Hub (potential)
- Lobby
- Circulation
- Services
- Carpark

NOTE: RETAIL CANOPY/ AWNING SUBJECT TO SEPARATE DEVELOPMENT APPLICATION

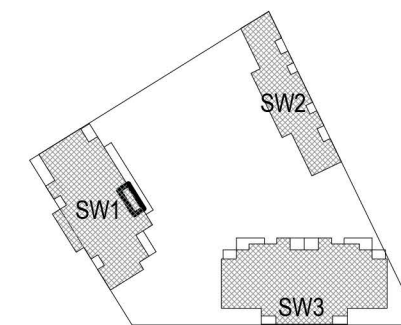


7428A SK-211 P 7  
13/04/2015  
1:200 @ A3  
0 2 10m

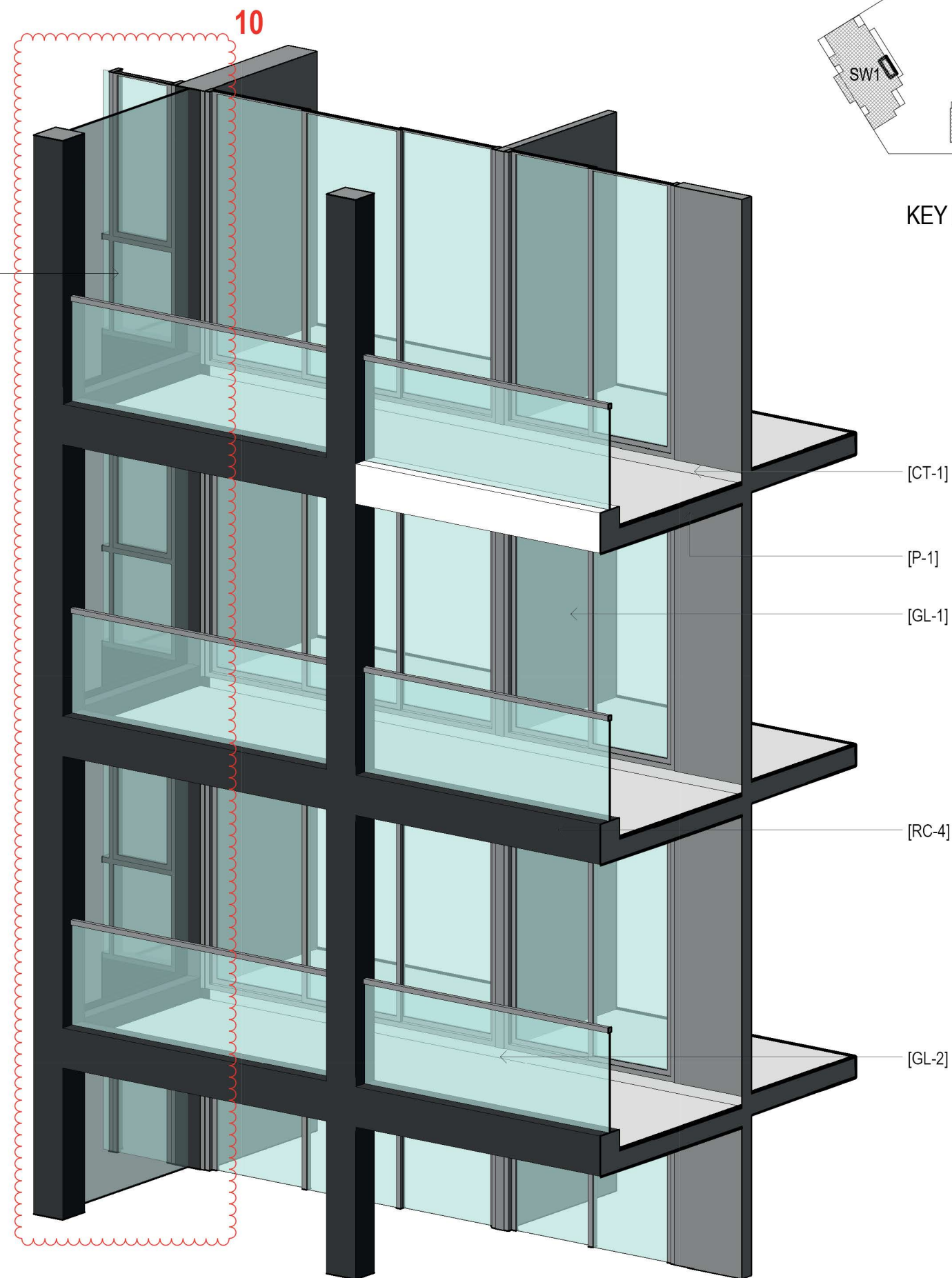
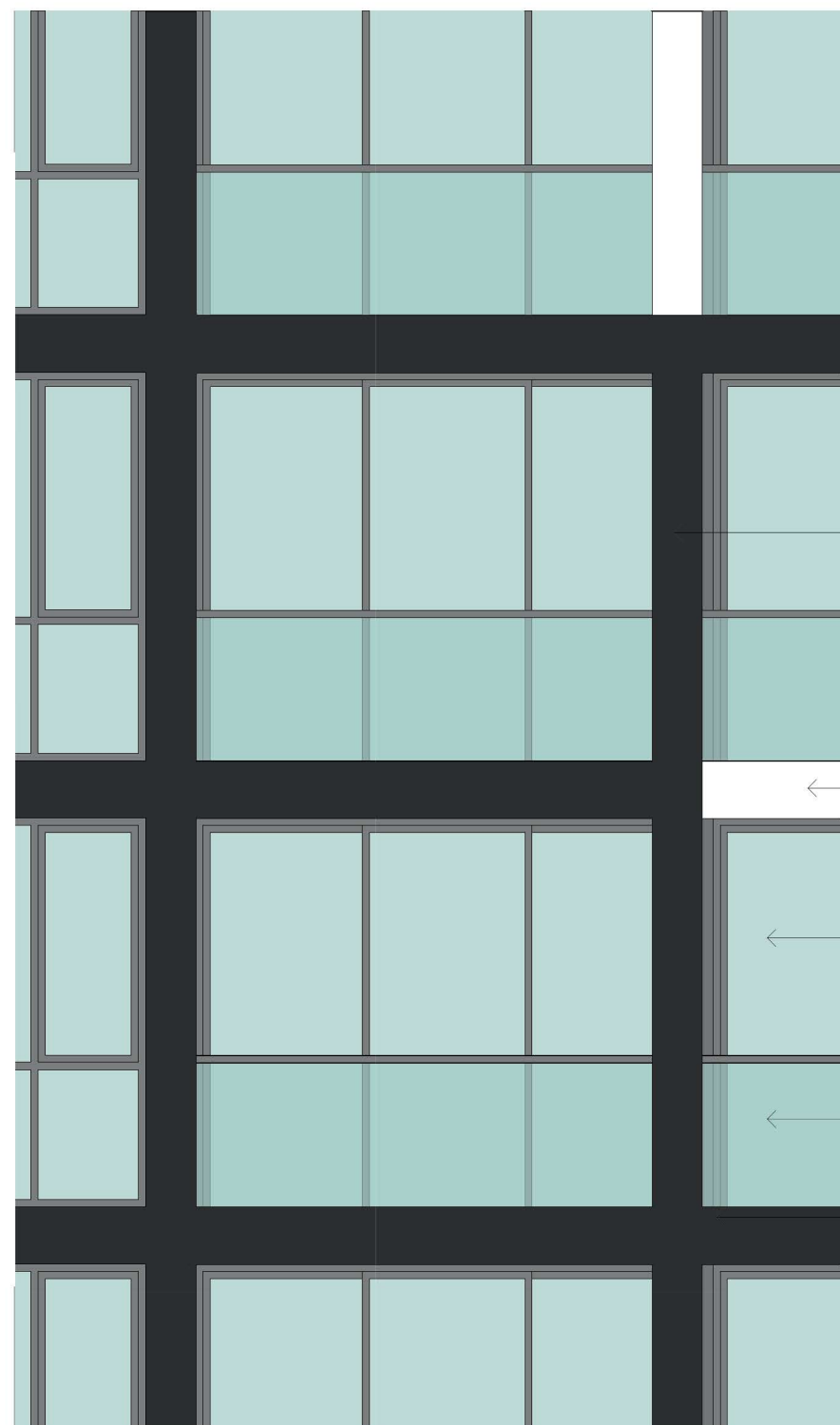
DENTON  
CORKER  
MARSHALL

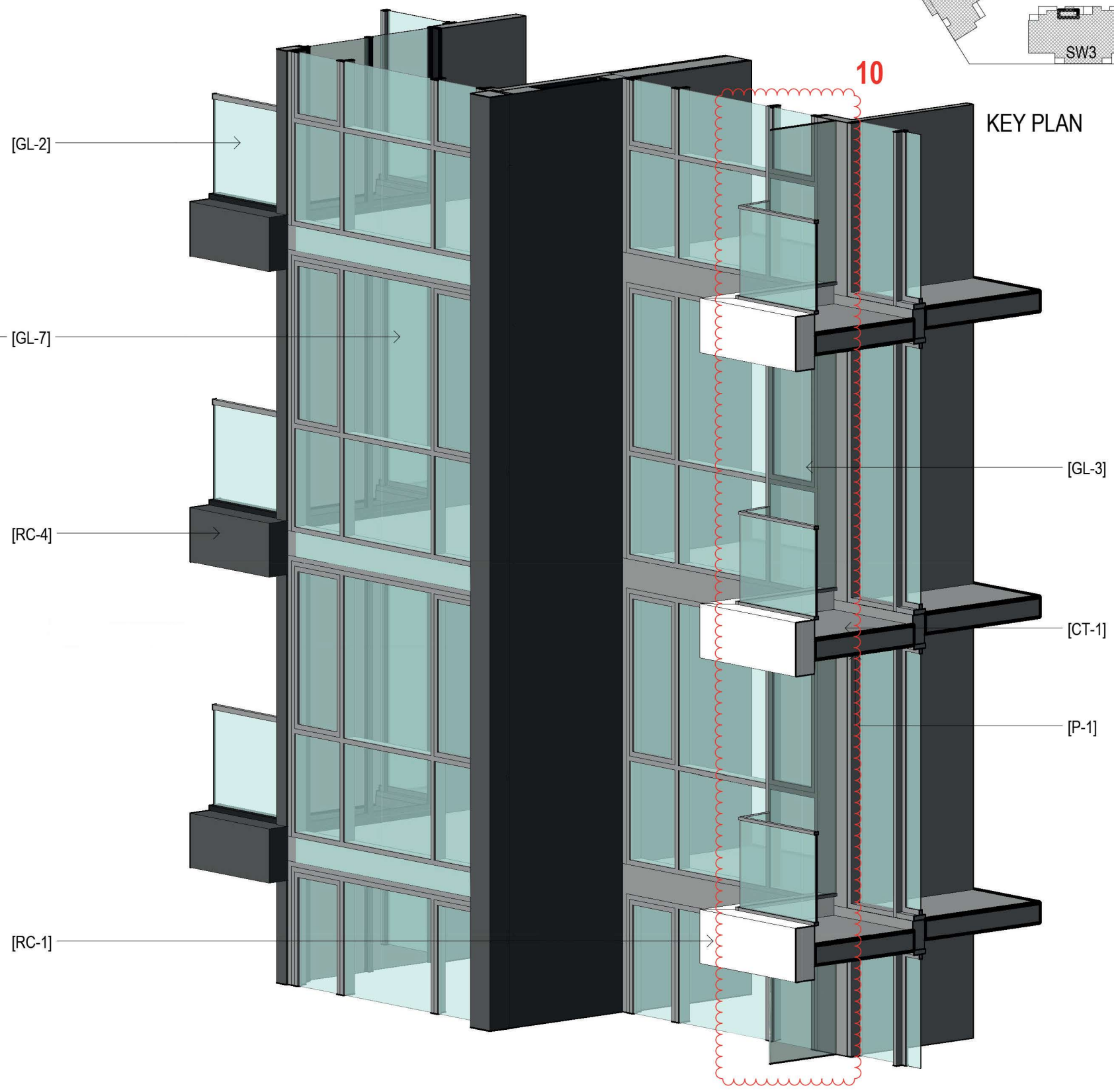
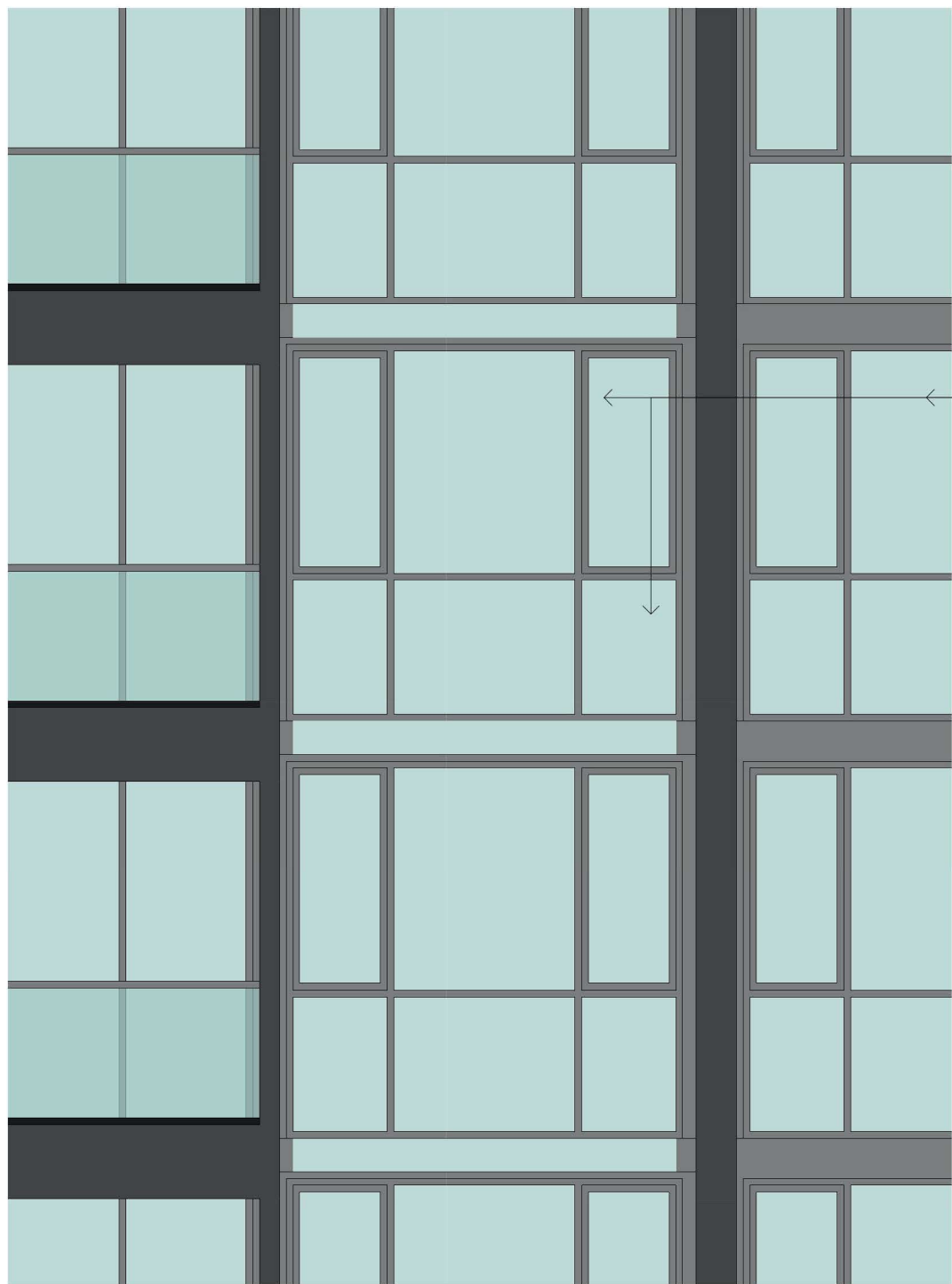
**THE HAYMARKET**  
**LEND LEASE DEVELOPMENT**

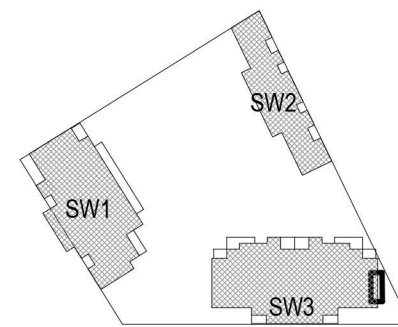
**DEVELOPMENT APPLICATION**  
**SOUTH WEST PLOT**  
**PUBLIC REALM INTERFACE**  
**SECTION 1 - THE BOULEVARD**



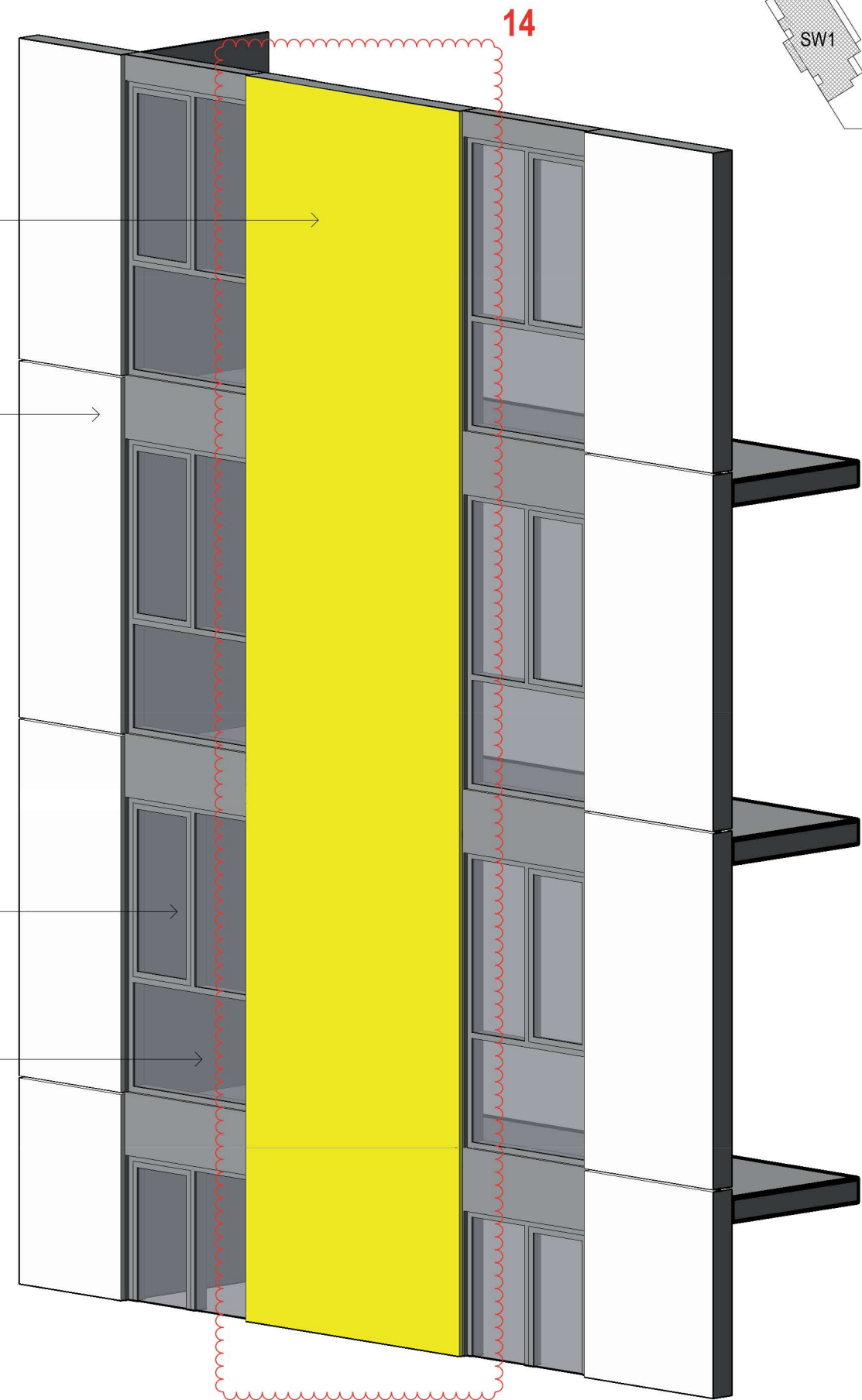
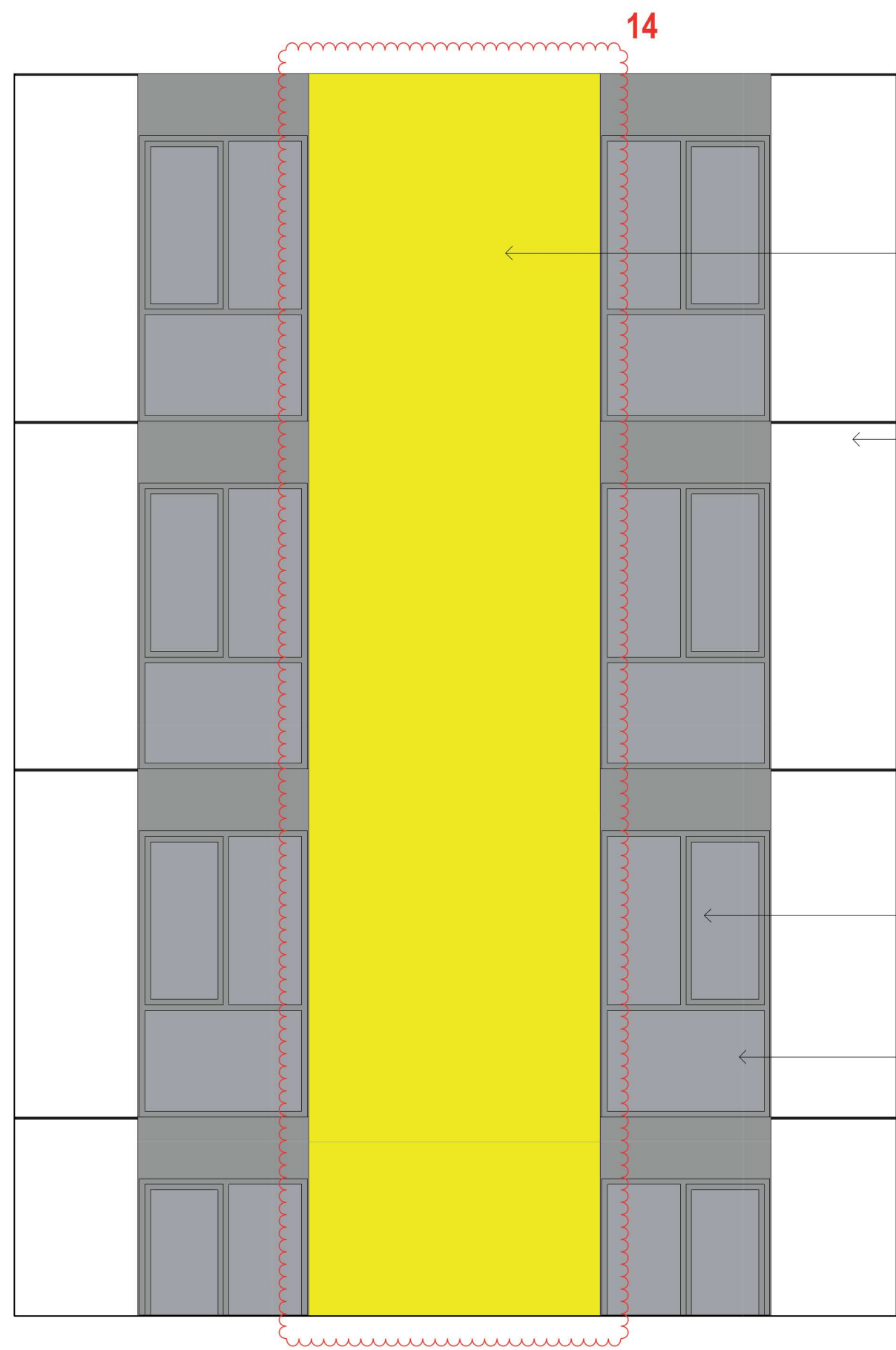
KEY PLAN







KEY PLAN

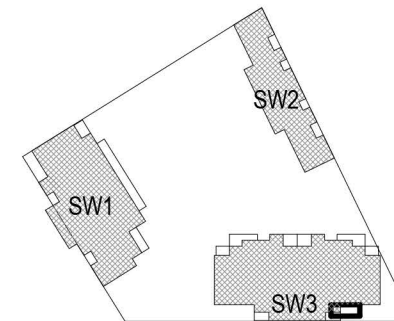


[RC-6]

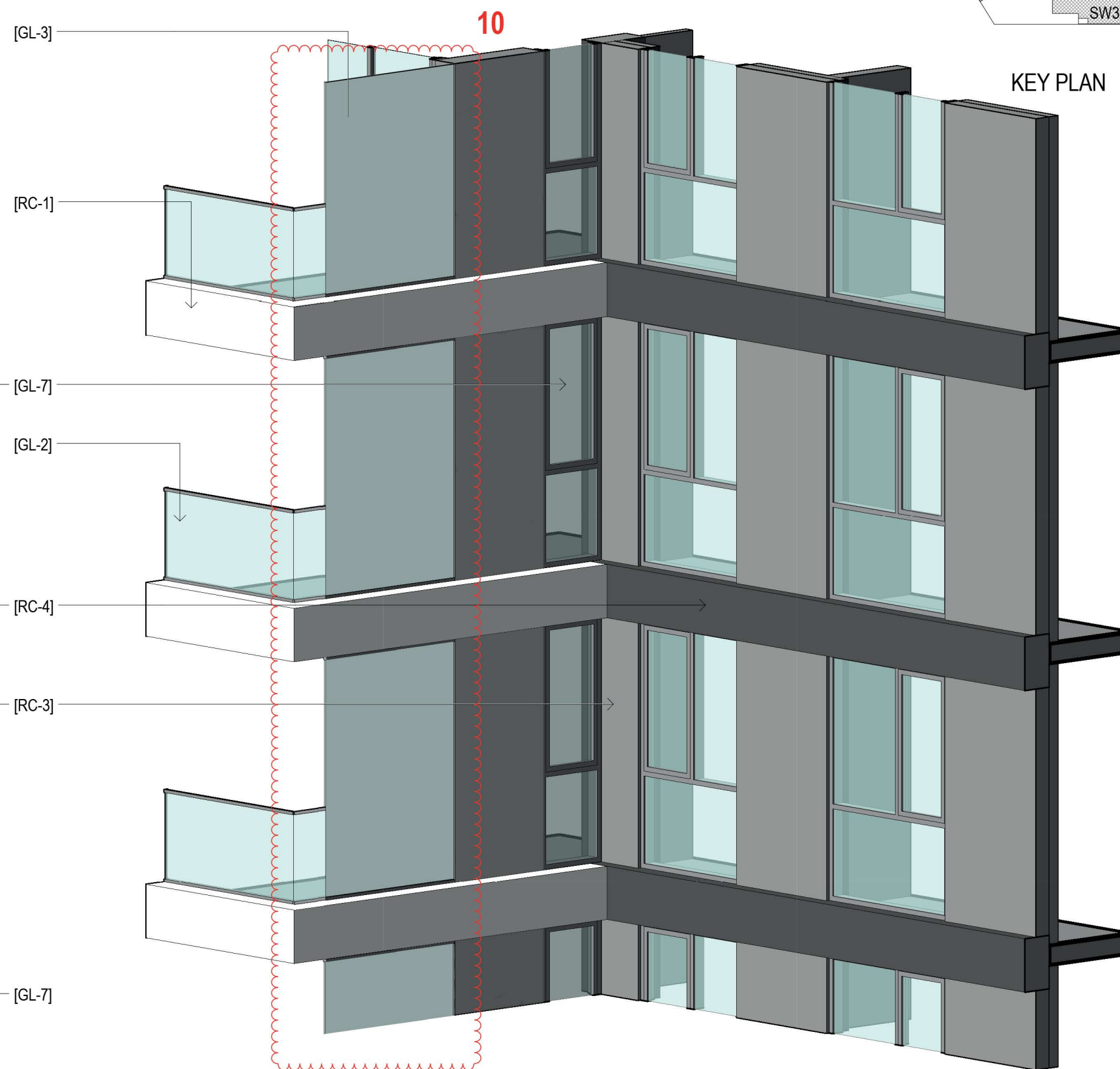
[RC-2]

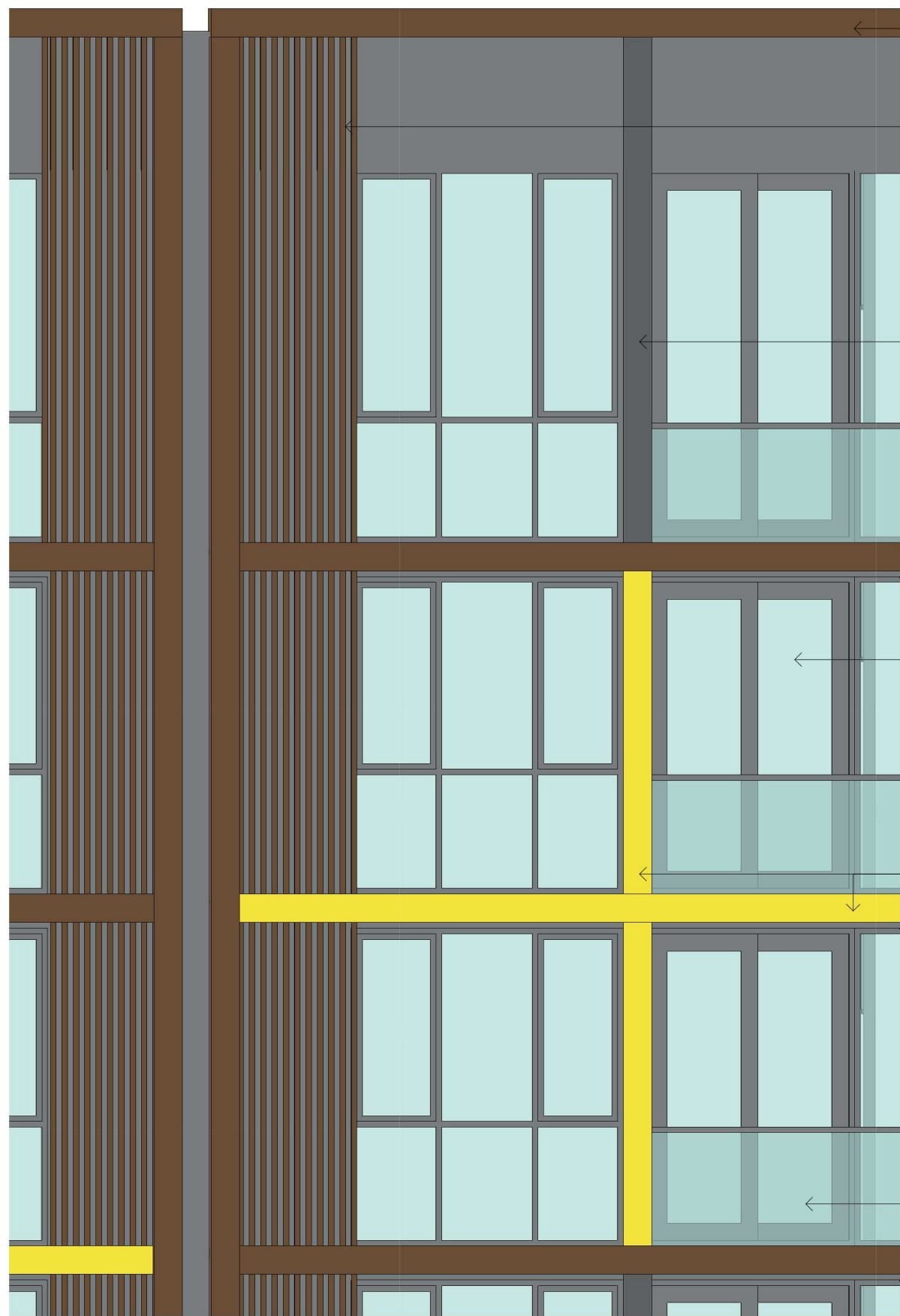
[GL-1]

[GL-1]

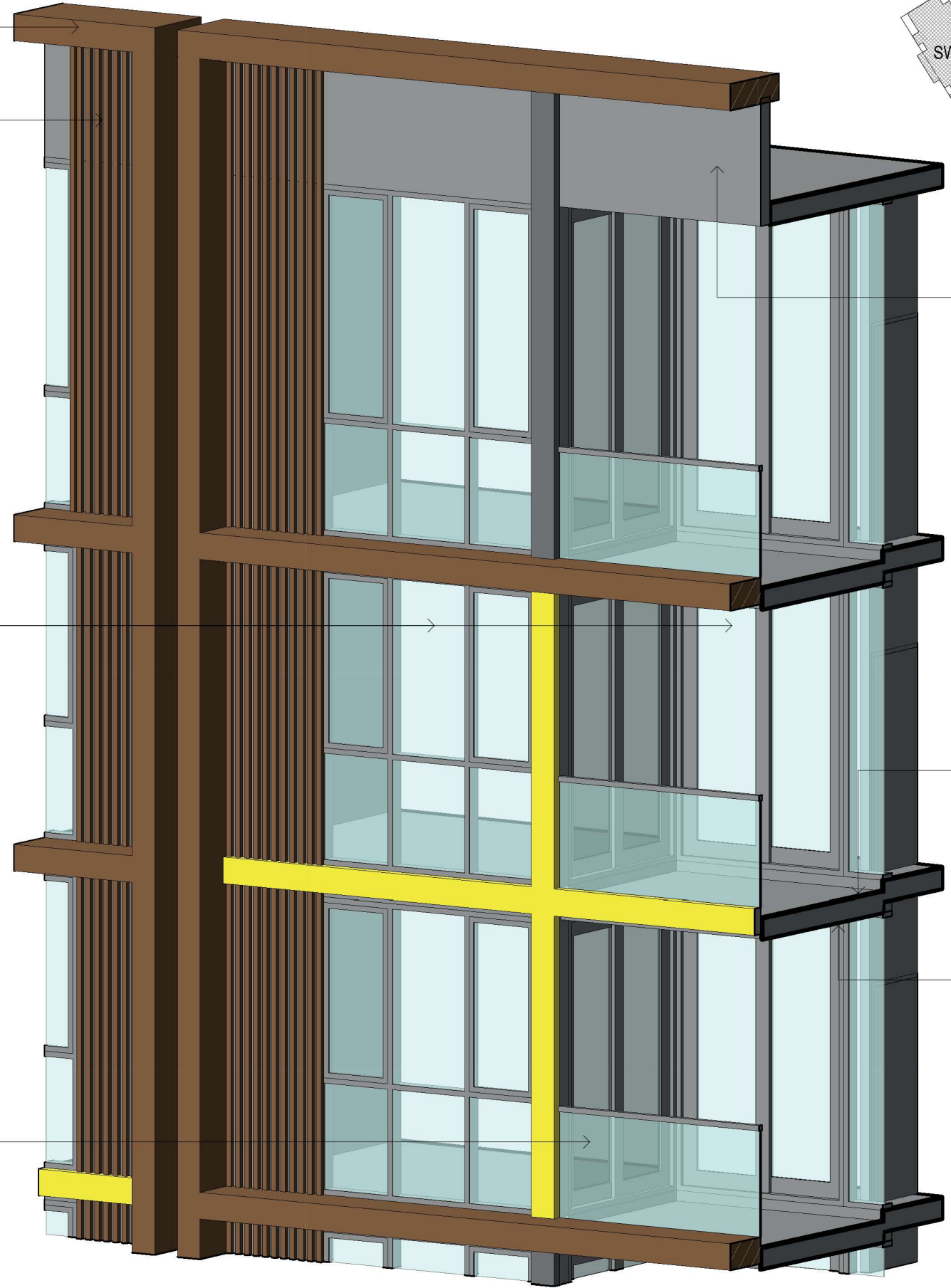


KEY PLAN

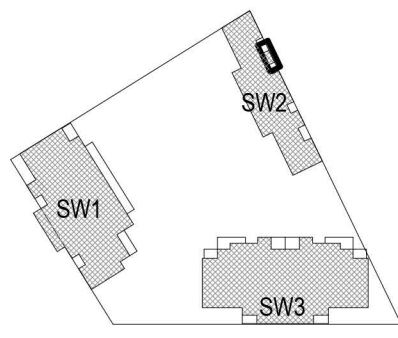




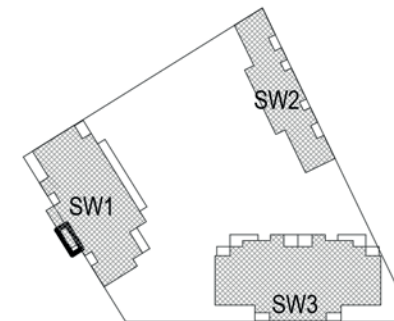
[TI-1]  
 [AL-11]  
**15**  
 [AL-5]  
 [GL-7]  
 [AL-4]  
 [GL-2]



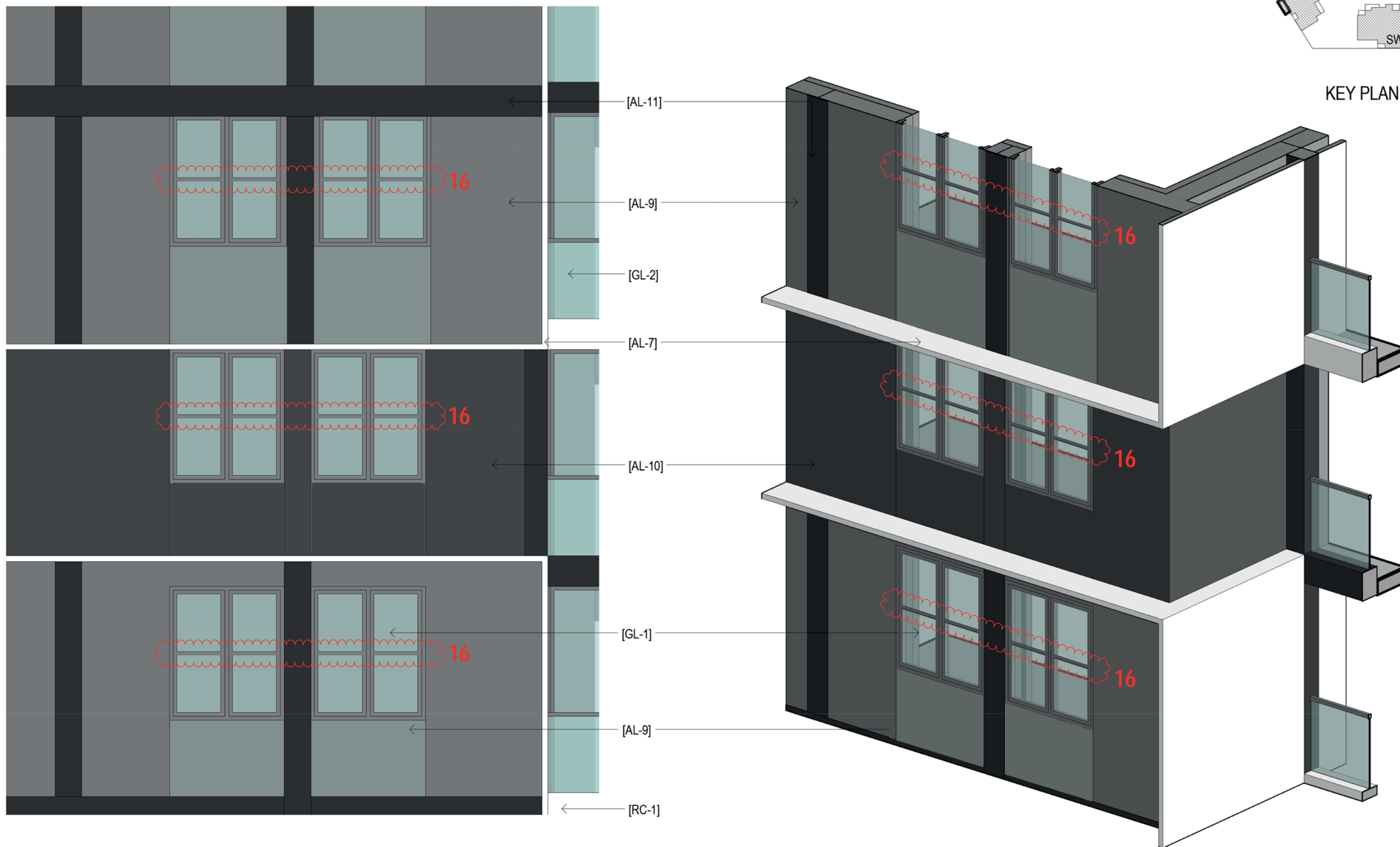
[CFC-1]  
 [CT-1]  
 [P-1]



KEY PLAN



KEY PLAN



**THE HAYMARKET SOUTH WEST PLOT - EXTERIOR FINISHES SCHEDULE**

Proposed Finish Type	
Reference	Description
AL-1	Aluminium cladding and louvres; grey.
AL-2	Aluminium horizontal and vertical blades; muted terracotta, grey and charcoal.
AL-3	Aluminium clad canopy; light grey colour, dark grey colour support rods.
AL-4	Aluminium cladding; yellow.
AL-5	Aluminium cladding; charcoal.
AL-6	Aluminium louvre; charcoal.
AL-7	Aluminium cladding; white.
AL-8	Perforated aluminium Juliet balcony balustrade
AL-9	Alucobond (or similar) cladding; anodised aluminium
AL-10	Horizontal profiled metal cladding; Charcoal
AL-11	Aluminium battens
CFC-1	Paint finish on compressed cement sheet cladding; grey.
CT-1	Ceramic floor tiles.
CT-2	Brick.
GL-1	Aluminium glazing system; grey tinted glazing and mid-grey frame.
GL-1A	Aluminium glazing spandrel system; colour matched to grey tint glazing and mid-grey frame.
GL-2	Metal framed glazed balustrade system; clear glass and light grey frame.
GL-3	Full height privacy and wind screens; translucent or clear glazing for wind screen function only.
GL-4	Metal framed balustrade system; clear glass, 80% external light grey frit and light grey frame, or flush mounted aluminium panel in metal frame; flat, light grey.
GL-5	Aluminium glazing system with concealed frames; clear glazing and mid-grey frame Retail shop fronts subject to separate development applications by retail tenant.
GL-6	Glazed balustrade system; clear glass and stainless steel handrail/ fixings.
GL-7	Aluminium glazing system; clear glazing and mid-grey frame.
GL-7A	Aluminium glazing spandrel system; colour matched to clear glazing and mid-grey frame.
GL-7B	Aluminium glazing system with projecting external mullions; clear glazing and mid-grey frame.
GL-8	Opaque window or flush finish solid panel for ventilation; grey to match RC-3.
GL-9	Aluminium clear glass window or horizontal aluminium ventilation louvers; mid-grey frame and louvre.
GL-10	Aluminium sliding glazed balcony screen; clear glazing with light grey frame.
P-1	Textured paint to in-situ concrete soffit; grey.
RC-1	Paint/stain finish on concrete; white.
RC-2	Paint/stain finish on concrete; light grey.
RC-3	Paint/stain finish on concrete; grey.
RC-4	Paint/stain finish on concrete; charcoal.
RC-5	Paint/stain finish on concrete; dark grey.
RC-6	Paint finish on concrete; yellow.
RC-10	Paint/stain finish on concrete; warm grey/ brown (to match TI-1).
TI-1	Timber Composite Cladding

# DOCUMENT INFORMATION

## **South West Plot, Darling Square Drawing Amendments for S69**

13 April 2015

Prepared by:

Denton Corker Marshall Pty Ltd  
ABN 84 615 019 443 ACN 131 308 088  
49 Exhibition Street  
Melbourne  
Victoria 3000 Australia

Director Peter Williams  
Telephone +61 3 9012 3600  
Facsimile +61 3 9012 3601  
Email projectmailbox@dentoncorkermarshall.com

Prepared for:

Lend Lease Development  
30 The Bond, 30 Hickson Road,  
Millers Point, NSW, 2000

<b>Rev</b>	<b>Date</b>	<b>Originated</b>	<b>Checked</b>	<b>Approved</b>
C	12/03/2015 Draft	SJ	AB / ES	PW
D	13/04/2015	SJ	AB	ES