

Appendix E Community and stakeholder engagement

Appendix E.1 Neighborhood Letter November 2024



EDP Renewables Australia
Level 4, 54 Marcus Clarke Street
Canberra
ACT 2601

10/09/2024

The resident

Postal address

RE: Proposed Merino Solar Farm

As you may recall from our correspondence in 2022 and 2023, we intend to lodge a State Significant Development (SSD) Development Application for the proposed Merino Solar Farm, located approximately 6 km south of Goulburn. A map showing the proposed location is enclosed for your reference.

The Solar Farm would have a generation capacity of up to 500 megawatts (MW) and would feature a battery energy storage system (BESS) of approximately 300 MW / 1200 megawatt-hours (MWh). The solar farm would connect directly to the National Energy Market (NEM) Grid through an existing Transgrid 330kv transmission line.

The solar energy produced by the Merino Solar Farm would be used to send clean, renewable power into the New South Wales (NSW) electricity grid to serve the needs of both the local community and broader NSW. It would assist in the rapid decarbonisation initiative underlaid by the NSW government's critical Electricity Infrastructure Roadmap.

The Proposal would assist in reducing Australia's emissions, improve national resilience in energy supply, and support affordable clean energy for Australians. The Proposal will also provide benefits to the local community.

EDP Renewables Australia and ITP Development Australia

In November 2023, EDP Renewables (EDPR) acquired ITP Development Australia (the Developer who was proposing the Merino Solar Farm) and the company became part of EDP Renewables APAC, a leading clean energy hub for the region.

The EDP Renewables Australia team develops utility and town-scale solar farms in Australia and undertakes solar farm landholder engagement, system design, planning approvals, financing, electrical connection approvals and commissioning.

EDP Renewables Australia maintains stakeholder relationships (such as those with communities, governments and contractors) related to previously owned ITP Development projects. EDP Renewables Australia holds a broad portfolio of solar projects in the NSW region and is moving towards battery storage development.

Proposal Update

In 2022, ITP Development Australia commenced engagement with the community and key stakeholders to complete the initial stages of a NSW SSD planning application, called a Scoping Report.

The Scoping Report was submitted to the NSW Government Department of Planning and Environment (DPE) (now known as the NSW Department of Planning, Housing and Infrastructure due to a government restructure earlier this year) in June 2023. It was assessed by DPHI and relevant agencies, and Secretary's Environmental Assessment Requirements (SEARs) were issued on the 14th of July 2023.

SEARs are issued in response to a Scoping Report and list the information and detailed specialist assessments that need to be undertaken in the Environmental Impact Statement (EIS) phase of the development application.

The Proposal is now beginning to work through the detailed assessment required for the EIS, which will accompany the SSD application.

Environmental Impact Statement (EIS)

The EIS allows us to fully assess the merits of the proposed solar farm while continuing to engage with the local Turrumbidgee and Goulburn communities. The purpose of this engagement is to better understand concerns, gather information and feedback to help shape the Proposal and inform opportunities to share benefits locally through community benefit funds and other local economic opportunities.

The EIS assessments have commenced and will continue over the remainder of early 2024 into early 2025. The EIS will include specialist impact assessment reports, such as:

- Visual impact
- Noise
- Biodiversity
- Heritage
- Traffic and Transport
- Social Impact.

EDP Renewables Australia aims to submit the EIS report to DPHI in March/April 2025. Community and stakeholder engagement over the coming months will be summarised within the EIS, along with the outcomes of the specialist reports outlined above.

Once the EIS is submitted, it will be placed on Public Exhibition for comment for a minimum of 28 days. During the Public Exhibition stage, the community and government agencies will be invited to provide feedback on the Proposal.

EDP Renewables Australia will then respond to any issues, comments or concerns raised by the community and stakeholders during the Public Exhibition period within a Submissions Report. DPPI will then make a recommendation on whether the Proposal should be approved. Find enclosed at the back of this letter further information regarding the NSW SSD application process.

How to learn more and provide feedback

Engaging with the local community is essential to us. EDP Renewables Australia seeks to ensure that neighbours, stakeholders and the wider community have access to information regarding the Proposal, how it may affect you, and the SSD application process so that you can participate in the Proposal and help to shape it.

We will be meeting with neighbours, facilitating community information sessions, and sharing information on the Proposal and its progress. Your feedback will help inform our studies as part of the EIS process.

We will be facilitating two community drop-in information events at the end of October 2024 and will provide more details on this soon. We also invite the opportunity to meet with you to discuss the Proposal further outside of the community information session should this be of interest.

If you have any questions or wish to discuss the Proposal further, please feel free to contact us at 1800 242 282 or email us at australia@edp.com.

Proposal Benefits

The Merino Solar Farm would bring substantial benefits to the area, both directly and indirectly. The development of the Proposal would create approximately 200-300 full-time equivalent (FTE) jobs during its construction period, and approximately 4 FTE and 50 casual operational jobs during its operational life. The development of the Proposal is anticipated to take approximately 24-months.

The Proposal would diversify income and increase economic revenue in the region, with local service providers being utilised through ancillary services such as food, lodging, and tourism operators in the local area. The Proposal will also bring opportunities through community benefit sharing.

The Proposal will also significantly contribute toward national energy security and would contribute toward the NSW Government's aim of reaching net-zero emissions by 2050 by producing clean renewable energy to the national electricity grid.



Local Benefit Sharing

Community Benefit Schemes are an important aspect of SSDs in NSW. Community Benefit Schemes are intended to share the benefits of the development amongst the community more broadly, beyond benefits seen through jobs and ancillary services.

We would love to hear your ideas on local priorities and how to share Proposal benefits as we look for ways to invest in the local community.

Find out more

Your ongoing input is important to us. Should you have any questions about the Proposal or have ideas on what EDP Renewables Australia can do to provide support to the local community, please send an email or visit the Proposal's website at <https://www.edpr.com/apac/en/merino-solar-farm>.

Kind regards,

Una Djakovic

Business Development - Australia

EDP Renewables Australia



Figure 1.1 – Proposed site location. The area displayed is the investigation area (not the infrastructure footprint).

NSW STATE SIGNIFICANT DEVELOPMENT TIMELINE

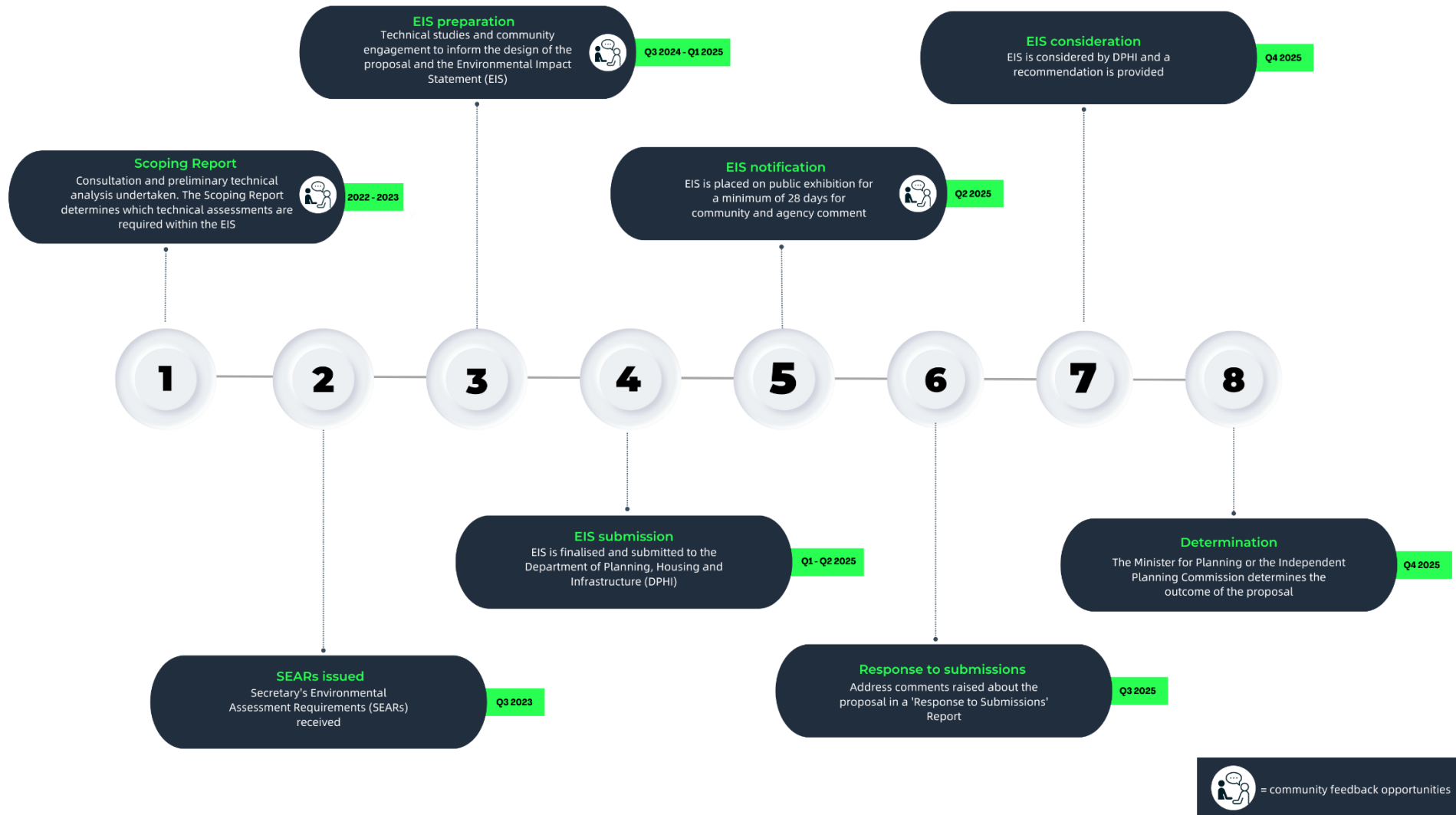


Figure 1.2 – NSW SSD Timeline

**Appendix E.2 Neighborhood Letter January
2025**



EDP Renewables Australia
Level 4, 54 Marcus Clarke Street
Canberra ACT 2601

29/01/2025

To the resident,

RE: Merino Solar Farm update

As you may recall from our correspondence in 2022, 2023 and 2024, EDPR Australia (formerly ITP Development) intended to lodge a NSW State Significant Development (SSD) planning application for the proposed Merino Solar Farm, located approximately 6 km south of Goulburn, and is currently in the Environmental Impact Statement (EIS) phase of the process.

The solar energy produced by the Merino Solar Farm would be used to send clean, renewable power into the NSW electricity grid to serve the needs of both the local community and broader NSW. It would assist in the rapid decarbonisation initiative underlaid by the NSW government's critical Electricity Infrastructure Roadmap.

The Project would assist in reducing Australia's emissions, improve national resilience in energy supply, and support affordable clean energy for Australians. The Project will also provide benefits to the local community through an economic injection in the local region, as well as community benefit sharing (CBS) programs.

Since our last correspondence, there are a number of new updates which we wish to inform you of.

Project Update

The BESS has been upgraded from the originally proposed 300MW / 1200 megawatt- hours (MWh) to 450MW / 1800 MWh. This change is to provide further storage capacity and provide additional electricity grid stabilisation in times of peak demand. No changes are proposed for the solar generation capacity, and this change is in relation to the BESS only. Additionally, there have been very minor changes in the land associated with the Project, which have resulted from the roads required to access the site.

Landscape and Visual Impact Assessment (LVIA)

Technical experts have commenced the LVIA for the Merino Solar Farm. Properties requiring detailed assessment will be identified and contacted directly in the coming weeks to organise a



time for LVIA specialists to visit their property to gather information for the detailed assessments.

Community drop-in information session

The Project Team will be undertaking community engagement activities across February to answer questions and gather insight which will help to inform our studies as part of the EIS and help shape the Project.

We will be facilitating a community drop-in information session and invite you to attend. The details are as follows:

Date	Tuesday 18 February
Time	2pm – 6pm
Location	Goulburn Soldiers Club, Merino Room
Address	15/17 Market St Goulburn NSW

About EDP Renewables Australia

In November 2023, EDP Renewables (EDPR) acquired ITP Development (the Developer who was proposing the Merino Solar Farm) and the company became part of EDP Renewables APAC, a leading clean energy hub for the region.

The EDPR Australia team develops utility and town-scale solar farms in Australia and undertakes solar farm landholder engagement, system design, planning approvals, financing, electrical connection approvals and commissioning.

EDPR Australia maintains stakeholder relationships (such as those with communities, governments and contractors) related to previously owned ITP Development projects. EDP Renewables Australia holds a broad portfolio of solar projects in the NSW region and is moving towards battery storage development.

Project Benefits

The Merino Solar Farm would bring substantial benefits to the area, both directly and indirectly. The development of the Project would create approximately 200-300 full-time equivalent (FTE) jobs during its construction period, and approximately 4 FTE and 50 casual operational jobs during its operational life. The construction of the Project is anticipated to take approximately 24-months.

The Project would diversify income and increase economic revenue in the region, with local service providers being utilised through ancillary services such as food, lodging, and tourism operators in the local area. The Project will also significantly contribute toward national energy security and would contribute toward the NSW Government's aim of reaching net-zero emissions by 2050 by producing clean renewable energy to the national electricity grid.

Local Benefit Sharing

Community Benefit Schemes are an important aspect of SSDs in NSW. Community Benefit Schemes are intended to share the benefits of the development amongst the community more broadly, beyond benefits seen through jobs and ancillary services.

We would love to hear your ideas on local priorities and how to share Project benefits as we look for ways to invest in the local community.

How to learn more and provide feedback

Engaging with the local community is essential to us. EDPR seeks to ensure that neighbours, stakeholders and the wider community have access to information regarding the Project, how it may affect you, and the SSD application process so that you can participate in the Project and help to shape it.

As mentioned above, we will be hosting a community information session in February 2025. We also invite the opportunity to meet with you to discuss the Project further outside of the community information session should this be of interest.

If you have any questions about the Project or have ideas on what EDPR Australia can do to provide support to the local community, please send an email to merino@edp.com, call us at 1300 551 715, or visit the Project's website at <https://www.edpr.com/apac/en/merino-solar-farm>.

Kind regards,

A handwritten signature in black ink, appearing to read "M. Talent", written in a cursive style.

Mishka Talent
Business Development – Australia
EDPR Australia

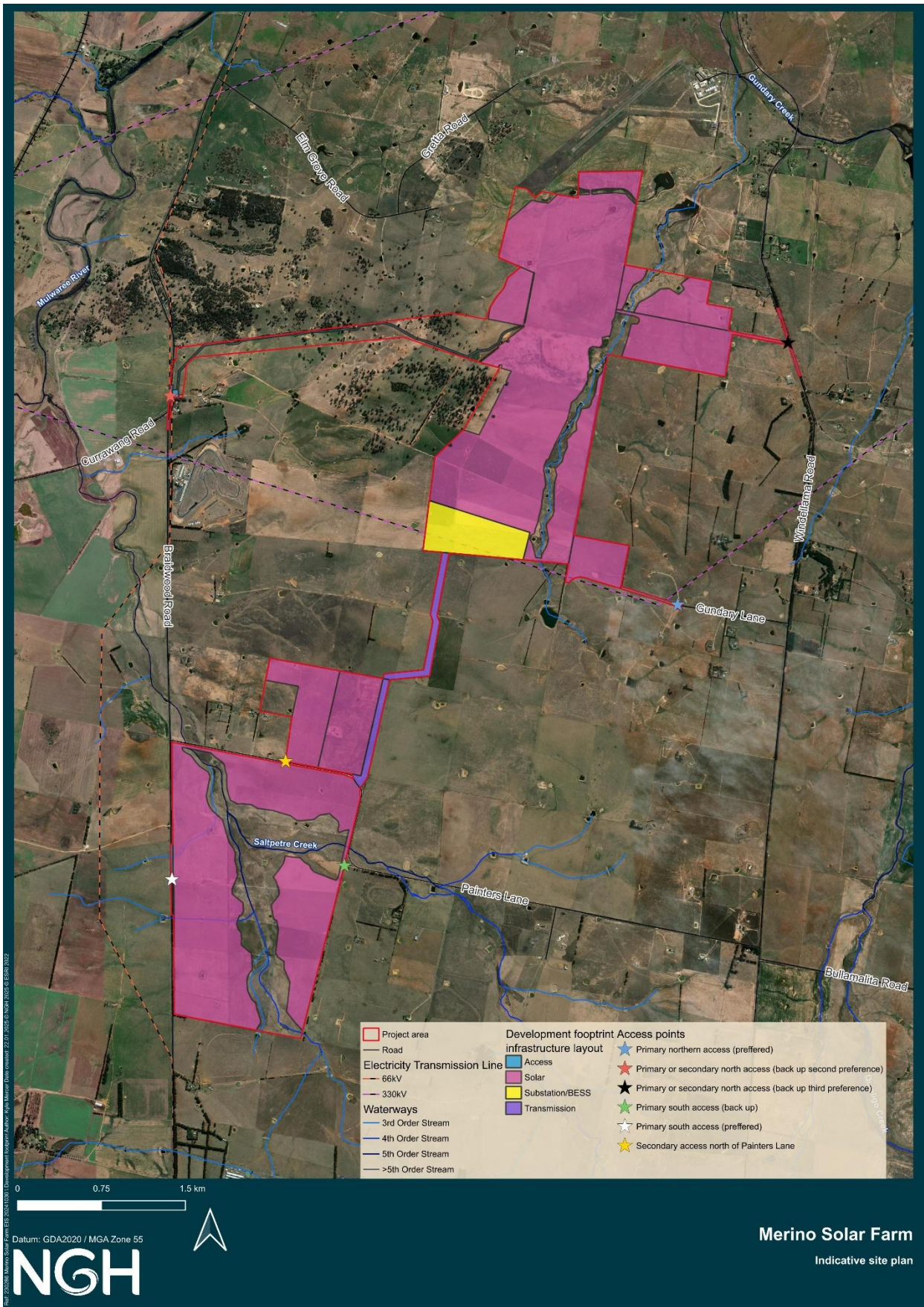


Figure 1.1 – Indicative site plan

NSW STATE SIGNIFICANT DEVELOPMENT
TIMELINE

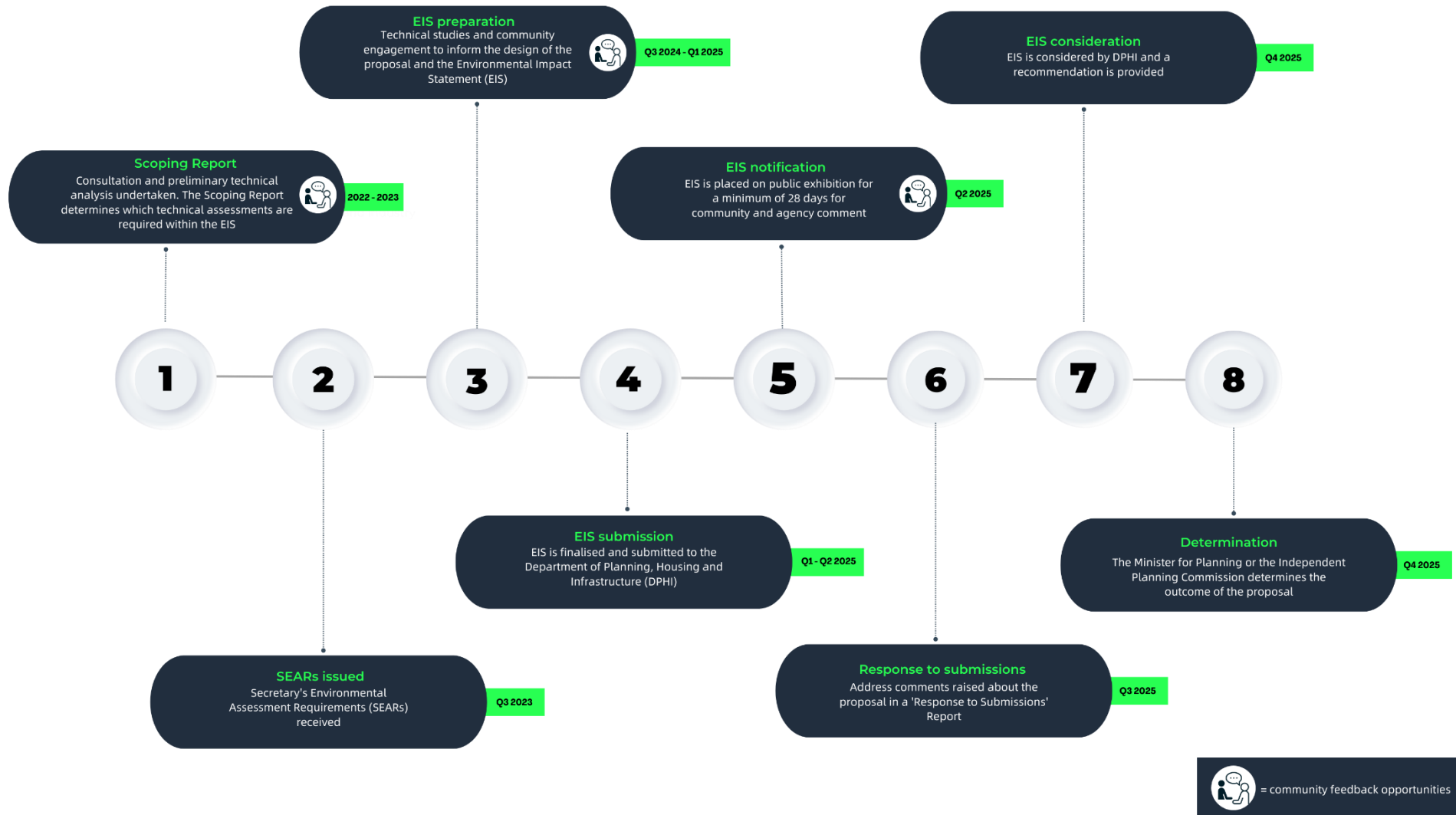


Figure 1.2 – NSW SSD Timeline

**Appendix E.3 Neighbour Letter September
2025**



EDP Renewables Australia
Level 4, 54 Marcus Clarke Street
Canberra ACT 2601

19/09/2025

To the resident,

RE: Merino Solar Farm EIS update

We are writing to provide you with an update on the Merino Solar Farm Project.

Community consultation held in February of this year provided strong insights that have directly informed the technical assessments required for the Environmental Impact Statement (EIS). These detailed studies have been ongoing throughout the past several months and are now reaching completion. Please see the enclosed Project update providing details on this.

EDPR Australia is preparing to submit the Project's EIS to the NSW Department of Planning, Housing and Infrastructure (DPHI) by the end of September. The EIS is a detailed assessment that examines the potential environmental, social and economic impacts of the Project and outlines the measures proposed to avoid, minimise or manage these impacts.

Once submitted, the EIS will be placed on public exhibition by DPHI for a minimum of 28 days. During this period, community members, Council and other stakeholders will be able to review the document and make formal submissions. The EIS will be publicly available on the NSW Major Projects Portal, which can be accessed by visiting <https://www.planningportal.nsw.gov.au/major-projects/projects/merino-solar-farm> or by scanning the QR code below.

We are committed to keeping the community informed and encourage you to review the EIS and share your feedback during the exhibition period. Your input is an important part of the assessment process and will be carefully considered by DPHI in its determination of the Project.



If you have any questions, please don't hesitate to contact our team:

P: 1300 551 715

E: merino@edp.com

W: <https://www.edp.com/en/asia-pacific/australia/merino-solar-farm> .

Yours sincerely,

A handwritten signature in black ink, appearing to be 'Mishka Talent', written over a light blue horizontal line.

Mishka Talent
Business Development – Australia | EDPR Australia

**Appendix E.4 Newspaper Advertisement 8 Feb
2025**

relax

READING FOR YOUR WEEKEND



Around the region
WHAT'S ON THE WEEKEND
 PAGE 12

Superquiz, Giant Crossword
BRAIN TEASERS
 PAGES 27, 28

Recipes and more
DELICIOUS DISHES
 PAGE 29

TV LIFTOUT: YOUR VIEWING GUIDE STARTS PAGE 13



Merino Solar Farm Community Drop-in Session

Come and meet the team

EDPR Australia (EDPR) is developing a planning application for a Solar Farm and Battery Energy Storage System (BESS), to be located approximately 6 km south of Goulburn in the localities of Tirrannville and Gundry NSW. The Project has moved to the Environmental Impact Statement (EIS) stage which allows EDPR Australia to fully assess the merits of the proposed Solar Farm and BESS. EDPR Australia invites you to attend a community drop-in session where you can learn more about the project, share your insights, and provide valuable feedback.

Date Tuesday 18 February 2025
Time 2pm – 6pm
Location Goulburn Soldiers Club, Merino Room
Address 15/17 Market St Goulburn NSW



For more information, email merino@edpr.com or call 1300 551 715
 We also welcome feedback from interested community members via our online survey at <https://www.surveymonkey.com/r/merinosolarfarm> or scan the QR code

RM8473325



LATERALS

Laterals Chartered Accountants has moved!

Our shiny new office is now complete! You can now find us at
41 Goldsmith Street.

Contact us for all enquiries or if you are having trouble finding us.

02 4822 0555,
admin@laterals.com.au

To book in, contact us directly or use the online booking system on our website –
www.laterals.com.au.

After hours appointments also available by arrangement.



RM8472161

**Appendix E.5 Newspaper Advertisement 15 Feb
2025**

TV YOUR 7-DAY VIEWING GUIDE

Case of dirty lies behind clean living

Jess Layt

APPLE CIDER VINEGAR

Netflix

If you were worried that *Apple Cider Vinegar* would glamorise or humanise Belle Gibson, fear not - this delightful and mostly fictional series is a takedown of the wellness-over-medicine sphere and Gibson comes across very poorly.

If you're unaware, the real Belle Gibson (portrayed in this series by Kaitlyn Dever, with the most flawless Aussie accent an American has put to screen in recent memory) rose to prominence as a wellness influencer in Instagram's early days, claiming that her dedication to clean eating and living had cured or at least staved off the severity of her terminal brain cancer. After turning her profile into a successful empire with millions of followers, an app and a cookbook, Gibson's history of flat-out lying surfaced - she had never had cancer, and the money she'd "fundraised" for charities never arrived.

Apple Cider Vinegar takes the guts of Gibson's treachery and builds a more fictional story around it, with characters both made up, and inspired by real-life figures.

Gibson's story is shown alongside that of earlier influencer Milla (Alycia Debnam-Carey), who has also eschewed traditional medicine for alternative treatment, and Lucy (Tilda Coham-Hervey), who is consuming the content these women post through her own cancer journey.

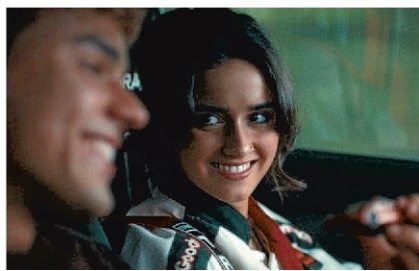
Meanwhile, Milla's friend and Gibson's manager, Chantelle (Aisha Dee), has taken all she can take of Gibson's conning, and shares what she can with journalists in the hope they will expose her lies.

Through six hour-long episodes this Aussie series reveals a woman with serious unchecked personality disorders (if we can armchair diagnose for a moment ... it feels appropriate), a desperate need for approval and an inability to accept reality.

The show brings to mind other recent series about entrepreneurial women who



American actor Kaitlyn Dever as cancer con artist Belle Gibson in the Australian series *Apple Cider Vinegar*. Picture by Netflix



Matthew Broome and Asha Banks in *My Fault: London*. Picture by Prime Video

conned their way to the top before a fall, like Elizabeth Holmes in *The Dropout* and Anna Delvey in *Inventing Anna*.

Despite the series being flashy and fun for the most part, with frequent fourth-wall breaks and inventive storytelling, it also has a harrowing storyline bolstered by some incredible acting.

Susie Porter and Matt Nable play Milla's parents. Mum wants to support Milla's right

to choose what happens to her body, even if it's in the face of clear science and doctors' advice, while Dad just wants his daughter to live and do whatever it takes to make that happen. When Milla's mother becomes sick herself, this dichotomy is heightened even more and it's heartbreaking to watch.

Apple Cider Vinegar is an unmitigated success. Dever's star power and remarkable talent (in front of and behind the camera) shines and audiences will be left thinking a little more critically about the things random people on the internet spruik.

MY FAULT: LONDON

Prime Video

If you're really into *The Fast and the Furious*, but you also really love trashy "taboo" romances, then Prime Video has just the guilty pleasure for you.

My Fault: London is the English remake of popular (among a certain streaming

crowd) Spanish film *Culpa Mia (My Fault)*, and it's just as bonkers as the first line of this review suggests.

The film, which is a pretty faithful recreation of its Spanish predecessor with some small changes, follows 17-year-old Noah, who is forced to move from her hometown in Florida to join posh, uppercrust British society after her mother marries a wealthy Londoner.

But the new stepdad isn't the only new family member Noah gains - her stepdad also has a seemingly spoilt son, Nick. The two are immediately at odds, despite clearly finding one another attractive.

Their animosity turns into something more affectionate after Noah tags along with Nick one night and ends up at an underground street race.

The believability factor - which was already pretty low at this point - is completely shot here, but that doesn't make the film any less fun.



Merino Solar Farm Community Drop-in Session

Come and meet the team

EDPR Australia (EDPR) is developing a planning application for a Solar Farm and Battery Energy Storage System (BESS), to be located approximately 6 km south of Goulburn in the localities of Turrannville and Gundry NSW. The Project has moved to the Environmental Impact Statement (EIS) stage which allows EDPR Australia to fully assess the merits of the proposed Solar Farm and BESS. EDPR Australia invites you to attend a community drop-in session where you can learn more about the project, share your insights, and provide valuable feedback.

Date Tuesday 18 February 2025
Time 2pm - 6pm
Location Goulburn Soldiers Club, Merino Room
Address 15/17 Market St Goulburn NSW



For more information, email merino@edpr.com or call 1300 551 715. We also welcome feedback from interested community members via our online survey at <https://www.surveymonkey.com/r/merinosolarfarm> or scan the QR code

RM8473325



Have you heard about our NEW lift?

The Goulburn Golf Club's new lift is now open!

We are now delighted to welcome patrons with mobility issues to enjoy our club and facilities.

Our brand new lift makes Goulburn Golf club more accessible for people with disabilities and the elderly.

02 4821 8133
www.goulburngolfclub.com.au
 Blackshaw Rd,
 Goulburn NSW 2580



RM8485974

Appendix E.6 Poster outside Coles



Parkinson's Shakin' Cocktail Party

Mal Webb Penelope Swales & Kylie Morrigan
The Stranded Assets

6pm Sat 12 April 2025

Dinner, 2 drinks & Show for just \$70
Huge Raffle great prizes, tulips for sale
Tickets available from venue 4821 3355 Goulburn Workers Club

Presented by Goulburn Support Group **parkinson's** NSW

edp

Learn more about the **MERINO SOLAR FARM**

Key facts:

- 1. 100MW solar farm
- 2. 100MW solar farm
- 3. 100MW solar farm
- 4. 100MW solar farm
- 5. 100MW solar farm
- 6. 100MW solar farm
- 7. 100MW solar farm
- 8. 100MW solar farm
- 9. 100MW solar farm
- 10. 100MW solar farm

Get in touch:

1800 000 000

www.edp.com.au

Food support for local farms

COLES

Your

**Appendix E.7 Poster Community Notice
Board**

hachette **TRACTORS AND THE WORLD OF FARM** Fortnightly \$2.99 31

Learn about the different types of cattle breeds and farms around the state

Slab RTA

Find out about the famous Lantz brand of tractors

Fordson Power Major tractor

Join the Cruise Goulburn - Crookwell - Gunning - Goulburn

Street Torque Motor Vehicle Group Inc. Supporting Local Foster Children and Families

Don't want to Cruise

LUCKY BOOK PRIZE

First Prize \$500 GIFT CARD

Second Prize \$250 GIFT CARD

No classic car & want to support the Toy Drive

STMYD Annual Toy Drive Street Torque Motor Vehicle Group Inc.

Reading Friends Australia

The most rewarding experience.

Readers Needed

We are looking for volunteers who can assist children with reading practice in local primary schools.

The children at GOULBURN NORTH PUBLIC SCHOOL

Need your help!

Call 0468 430 601

www.readingfriends.org.au

edp Renewables

Learn more about the **MERINO SOLAR FARM**

EDPR Australia is proposing to construct and operate a utility-scale solar farm and Battery Energy Storage System (BESS) located 6 km south of Goulburn, to the east of Braidwood Road.

Key facts:

- 450 megawatt (MW) solar farm
- 450MW / 1800MWh BESS
- 200-300 potential construction jobs
- 4 potential fulltime operational roles
- Development footprint of approximately 760 hectares
- The project is in the Environmental Impact Statement (EIS) stage
- Assessments underway include Visual Impact Assessment, Traffic Assessment, Fire, Cultural Heritage, Biodiversity, and more
- Construction commencement is dependent on approval, but no earlier than 2027
- Construction will take up to 24 months if approved.

Get in touch:

P: 1300 551 715
E: merino@edp.com
W: https://www.edpr.com/apac/en/merino-solar-farm

Or complete the community survey via the QR code below.

Breakfast with SAM & ANT

We are Open **7 DAYS & 5 NIGHTS** FOR DINE-IN

Monday - 6:30AM to 4:30PM
Tuesday to Friday - 6:30AM to 9PM
Saturday - 7AM to 9PM
Sunday - 7AM to 4PM

SERVING HAPPINESS One Dish at a Time!

Now open Saturdays

\$10 PIZZA
\$8.99 HASH-BROWN

Body Piercing

Michelle 0421 899 199

ARGYLE LOCKSMITHS

1300 000 000

LOCALS ONLY

Mates Away

Show 2025

Friday 28th Feb - Dog Show
Sat 1st & Sun 2nd March - Ag Show

WED 19 FEB **ONE DAY SALE 12 HOURS ONLY**

DAY ZERO SALE

\$0 JOINING FEE + 4 WEEKS FREE WED 19 FEB

\$0 JOINING FEE + 4 WEEKS FREE + BONUS \$100 CLUB VOUCHER FOR THE FIRST 30 TO JOIN ONLINE

FREE DELIVERY

Book with us today or anytime at lifeblood.com.au or with the Donate Blood app

Goulburn
www.karate.co.nz
Mobile: 04 7367 2069

W... are n... TAK...

Nurses and midwives are overworked

The NSW public health is facing a staffing crisis. NSW nurses and midwives are the lowest paid in Australia. We are asking the government to fix our pay and conditions, and attract the now recruits.

Nurses and midwives are exhausted. We are asking the government to fix our pay to stay in the professions.

Nurses and midwives are leaving because the government is not listening. You can show your support by sending the NSW government a message.

nswnma.info

V... M... PA... CHAMBE...

Concerto
Serenade
Pezzo
C...
Sergey Diabelli

Appendix E.8 Poster Outside Café



Learn more about the

MERINO SOLAR FARM

EDPR Australia is proposing to construct and operate a utility-scale solar farm and Battery Energy Storage System (BESS) located 6 km south of Goulburn, to the east of Braidwood Road.

Key facts:

- 450 megawatt (MW) solar farm
- 450MW / 1800MWh BESS
- 200-300 potential construction jobs
- 4 potential fulltime operational roles
- Development footprint of approximately 760 hectares
- The project is in the Environmental Impact Statement (EIS) stage
- Assessments underway include Visual Impact Assessment, Traffic Assessment, Fire, Cultural Heritage, Biodiversity, and more
- Constuction commencement is dependent on approval, but no earlier than 2027
- Construction will take up to 24 months if approved.

Get in touch:

P: 1300 551 715
E: merino@edp.com
W: <https://www.edpr.com/apac/en/merino-solar-farm>

Or complete the community survey via the QR code below.



Tim
New
Send your
Comments
We will pub
sp/10/10/20
Deadline 25

**Appendix E.9 Project Newsletter February
2025**

Merino Solar Farm

Newsletter | Issue 2025 February

EDPR Australia is proposing to construct and operate a utility-scale Solar Farm and Battery Energy Storage System (BESS) in the localities of Tirrannaville and Gundry NSW, located 6 km south of Goulburn, to the east of Braidwood Road.

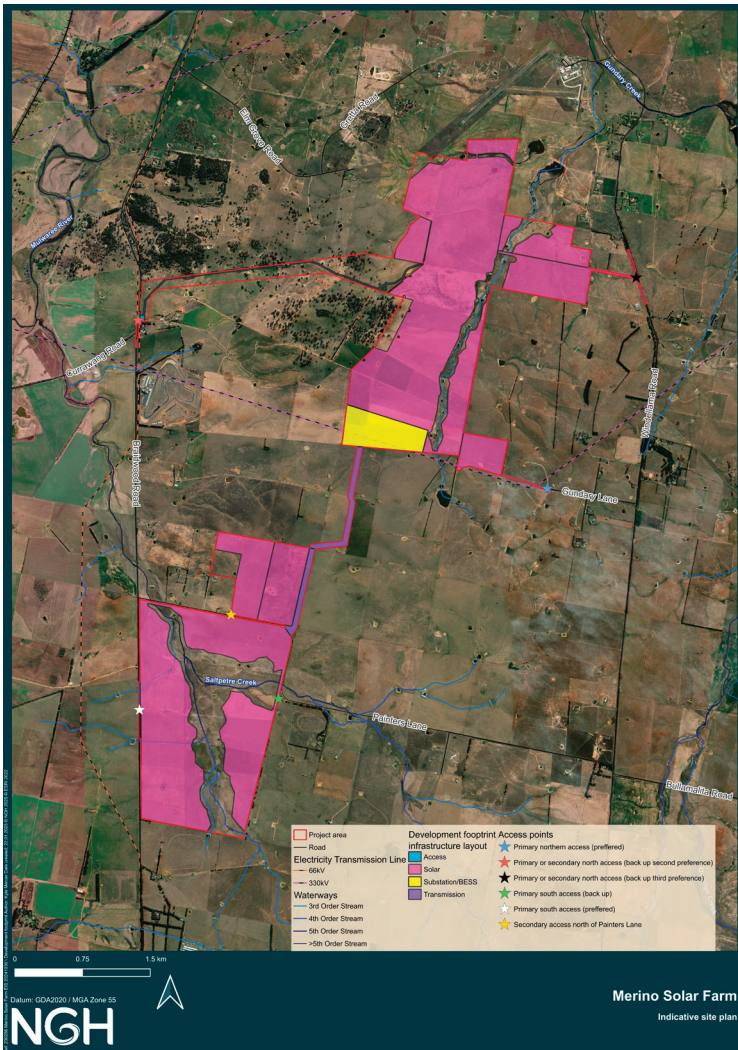
The development would connect renewable solar energy to the existing Transgrid high voltage powerline that transects the site. It would also assist the national electrical grid at times of peak demand and in times of emergency with additional energy storage.

The project is expected to provide 450MW of solar capacity and a BESS capacity of 450MW / 1800MWh. The BESS capacity has been increased from the original 300MW outlined in the Scoping Report.

The Project

The Merino Solar Farm project will utilise the latest technology in the sector, complying with all safety and hazard parameters that are highly regulated by the Australian Government. Construction and operation of the Project would involve the following key components:

- 450 MW Solar Farm including:
 - 450 MW/1800MWh (4 operational hours) BESS
 - An onsite substation connecting the BESS to the existing 330kV Transgrid transmission line
 - Associated infrastructure including transformers and inverters
 - Operations and maintenance (O&M) buildings, offices, staff amenities
- Switchyard
- Parking, site office and amenities for operational use.



Information and Questions on Merino Solar Farm

- 🌐 www.edpr.com/apac/merino-solar-farm
- ✉ merino@edp.com ☎ 1300 551 715
- 📄 Scan the QR code to complete the feedback survey.



EDP Renewables Australia

In December 2023, EDP Renewables (EDPR) acquired ITP Development (ITPD), and the company became part of EDP Renewables APAC, a leading clean energy hub for the region. EDPR Australia develops utility and town-scale solar farms in Australia and undertakes solar farm landholder engagement, system design, planning approvals, financing, electrical connection approvals and commissioning.

EDPR Australia maintains relationships with multiple stakeholders such as communities, governments and contractors to ensure successful project delivery. We hold a broad portfolio of solar projects in the New South Wales region and are moving towards battery storage development.

Project Update

In late 2022, ITPD began engaging with the community and stakeholders to complete a Scoping Report for an NSW State Significant Development (SSD) application, which was submitted to the NSW Department of Planning, Housing, and Infrastructure (DPHI) in June 2023. ITP received the Secretary's Environmental Assessment Requirements on 14 July 2023. The SEARs outline the necessary information to be included in an Environmental Impact Statement (EIS), which EDPR Australia are now preparing.

The EIS will fully assess the proposed Solar Farm and BESS, considering community input and specialist reports on visual impact, noise, biodiversity, heritage, traffic, transport, social impact and more. EDPR Australia plans to submit the EIS to the DPHI in Q2 2025. After submission, the EIS will be publicly exhibited for a minimum of 28 days for feedback and response. EDPR Australia will address community and stakeholder concerns in a Submissions Report, after which DPHI will decide whether or not to approve the Project.

Questions and Feedback

Engaging with the local community is essential to us. EDPR Australia seeks to ensure that neighbours, stakeholders and the wider community have access to information regarding the Project and how it may affect you so that you can participate in the Proposal and help to shape it. For more information, Project updates and to provide feedback, please contact us:

W: <https://www.edpr.com/apac/en/merino-solar-farm>

E: merino@edp.com

P: 1300 551 715

Or complete the feedback survey: <https://www.surveymonkey.com/r/merinosolarfarm>

Frequently Asked Questions

About the Project

Who is EDP Renewables?

EDP Renewables (EDPR), is a global leader in the renewables space. ITP Development – the developer responsible for the Merino Solar Farm – was acquired by EDPR in December 2023. EDPR Australia is now the developer responsible for the Merino Solar Farm.

EDPR Australia is part of EDPR Asia-Pacific and more broadly, EDP Renewables (EDPR). EDPR has

over 16.6 Gigawatts (GW) of renewable energy projects in operation globally, including many wind and solar projects.



Why Turraville?


Careful consideration is needed to select the most appropriate site for a solar farm. The proposed site was chosen due to:

- Access to existing high voltage transmission networks (reducing the need for extensive transmission work upgrades)

Information and Questions on Merino Solar Farm

 www.edpr.com/apac/merino-solar-farm

 merino@edp.com  1300 551 715

 Scan the QR code to complete the feedback survey.



- Limited vegetation due to historical grazing on the land, with land not being classified as Biophysical Strategic Agricultural Land (BSAL) or as Class 1, 2, or 3 under NSW land classification
- The site has good solar resources
- The site is close to Goulburn's local workforce (providing local employment opportunities) and other ancillary services such as lodging and food providers.

We understand there are a number of proposed energy developments in the region, and should you have any concerns regarding this, please contact us.

Why is this Project located outside of a Renewable Energy Zone (REZ)?

Renewable Energy Zones (REZ) are relatively new in Australia. REZs have been created by the NSW State Government as a planning tool to make sure that new energy infrastructure projects are matched with transmission and demand. These areas have been identified as areas where substantial transmission upgrades will be developed to allow for more energy input into the National Electricity Market (NEM) grid.

There is only so much grid capacity available within the transmission within these REZ areas, so while these REZs are at the forefront of new renewable energy projects consideration, it is still allowable to locate energy projects outside these zones. Significant increases in renewable energy generation are needed to ensure future energy security, and projects outside of REZs are allowed and also necessary to meet this growing demand. The Merino Solar Farm is located in an area that has available grid capacity, has access to an existing transmission point, and does not require larger transmission upgrades.

What is being proposed?

EDPR Australia is pursuing development approval for a 450 MW, utility-scale solar farm and 450MW

/1800 MW/hour battery energy storage system (BESS) located in the locality of Tirrannaville, 6 kilometres (km) south of Goulburn, NSW. The development footprint of the Project is 760 hectares (ha).

What is the Project status?

The Merino Solar Farm received Secretary's Environmental Assessment Requirements (SEARs) in August 2023 and is now in the Environmental Impact Statement (EIS) phase of the NSW state significant development (SSD) application process.

Technical assessments are currently being undertaken and will be comprised within the EIS. Once complete, the EIS will be submitted to the Department of Planning, Housing and Infrastructure (DPHI), which is estimated to be in Q2 2025. It will be placed on public exhibition for a minimum of 28 days for community and agency comment.

A Response to Submissions Report will be completed following the exhibition period addressing comments received. Following this, the DPHI will determine the outcome of the project.

Who approves the Project?



As a state-significant project, the Project will be reviewed by the NSW Department of Planning, Housing and Infrastructure (DPHI) who will provide final determination.


Why is the Project needed?

NSW has a 20-year renewable energy roadmap, with a goal to reduce emissions by 70% by 2035 compared to 2005 levels and increase NSW's uptake in renewable energy generation. This statewide initiative will create 6,300 construction and 2,800 ongoing jobs in regional Australia and will reduce electricity prices in the state by \$130 per year for households, \$430 for small businesses and reduce NSW's carbon emissions by

Information and Questions on Merino Solar Farm

 www.edpr.com/apac/merino-solar-farm

 merino@edp.com  1300 551 715

 Scan the QR code to complete the feedback survey.



approximately 90 million tons (NSW Government 2020).

Currently, the renewable energy generation into the National Energy Market in NSW is 36% (Energy NSW 2024), which includes large scale solar, hydro power stations, wind, and biomass power stations.

This project in NSW will contribute to achieving this target, create new jobs, and contribute to electricity price reduction and carbon emissions reduction.

How is energy created from the sun?

Solar panels harness sunlight and transform it into direct current (DC) electricity. Inverters then convert this power into alternating current (AC), which can be integrated into the electricity grid. From here, it is distributed to power homes and businesses through the National Energy Market (NEM).

What is a Battery Energy Storage System (BESS)?

A BESS is an energy storage system that uses a group of batteries to store electrical energy from a variety of sources. The system compensates for the intermittency of sources, providing backup power to address certain constraints such as weather conditions and lack of grid space. They are crucial to the increased adoption of dispersed energy sources and infrastructure.

How much energy will the Merino Farm produce?

The solar farm will produce approximately 1,095 GWh a year, enough to power around 193,400 homes (assuming average annual household consumption of 5,662 kWh) and offsets around 657,000 tonnes of CO₂-e pa (assuming grid Emissions Intensity of 0.6 tCO₂-e/MWh).

Environmental

What is the land currently used for?

A large portion of the land is currently being used for sheep grazing operations. It is anticipated that sheep grazing will continue once the Project is operational.

What is the impact to agricultural land?

Agreements are in place with landholders to maintain the properties with agrisolar practices. This means existing sheep grazing can continue across a large portion of the project area.

Solar farm trials in the NSW Central West found sheep grazing within solar farms produced better wool – and more of it – in the five years since the project commenced.

A detailed agricultural impact assessment is being undertaken by an accredited agricultural consultant in accordance with Solar Energy guideline (appendix A, Large Scale Solar Guideline NSW DPHI).

Will there be any visual impact?

The installation of solar panels will inevitably have some effect on the current look of the landscape. A Landscape and Visual Impact Assessment (LVIA) will be undertaken within the EIS, which will work to determine the visual impact of the solar farm.



EDPR Australia is committed to working closely with the local community to address any concerns and encourages the community to approach us with any issues that may arise.


Will glare be an issue?

The primary function of PV panels is to absorb sunlight rather than reflect it. The technical process in manufacturing PV panels includes anti-reflection, hydrophobic layers that minimise the potential for sunlight reflection. The Civilian Aviation Safety Authority (CASA) has approved projects close to the airport reporting that more glare is expected from the local waterways and the sun itself.

Information and Questions on Merino Solar Farm

 www.edpr.com/apac/merino-solar-farm

 merino@edp.com  1300 551 715

 Scan the QR code to complete the feedback survey.



Glaring is not an issue for Solar Farms, as evidenced by the fact that solar panels have been deployed in many areas such as Residential, Industrial and Sensitive Facilities, and are even present in airports around the world, including Ballarat, Adelaide, Brisbane, Changi (Singapore), Denver and Dusseldorf (and many more).

What is the lifespan of a solar farm?

EDPR Australia has applied for a Project term length of 30 years. After this period of time, EDPR Australia can apply to the NSW DPHI (or equivalent) to refurbish the site at the end of the operational life of the components. Should this not be granted, or EDPR Australia opts to not extend the life of the project, it will be decommissioned.

The decommissioning process is a critical part of the development application process, and a decommissioning plan must be included for the development to be considered. At the end of life, the solar panels will be removed and decommissioned. The land will be rehabilitated and returned to its original use.

Do solar farms impact native flora and fauna?

EDPR Australia has engaged expert consultants who will undertake flora and fauna surveys to understand the ecological characteristics of the site. They are committed to minimising impacts on native flora and fauna by designing the project to allow species to continue to thrive during the construction and operation phases. During these phases, management plans will be developed to ensure this compliance is maintained.

Will Cultural Heritage be preserved and protected?

Preserving and protecting Cultural Heritage is a priority for the Project and EDPR Australia is committed to adhering to all legislation to achieve this.

An Aboriginal Cultural Heritage Assessment (ACHA), which includes field surveys, is required

as part of the EIS process. This will include rigorous community engagement with Registered Aboriginal Parties (RAPs) and other community members throughout the community engagement process to ensure due diligence and maintain strong relationships and respect with First Nations peoples and cultures.

Construction

When will construction begin and how long will construction take?

The construction start date is dependent on a variety of factors, including DPHI approval. It is anticipated that construction will take approximately 24 months.

Will there be noise impact?

As part of our EIS process, a detailed noise assessment will be completed for both the construction and operation phases of the Project. Outcomes of these assessments will be shared.

Additionally, working hours will be dictated by the project planning approval and the NSW Environmental Protection Authority (EPA) guidelines. This outlines no work to be undertaken at night, on Sundays, or public holidays without prior approval or consultation with neighbours.



Will there be increased traffic?


During the construction period, both light and heavy vehicles will access the site during working hours to deliver both equipment and workers to the site. Once operational, the site will generate very low levels of traffic.

As part of the EIS phase, a detailed traffic assessment will be prepared that will assess the impacts of construction traffic, including the considerations associated with intersections and delivery routes.

Information and Questions on Merino Solar Farm

 www.edpr.com/apac/merino-solar-farm

 merino@edp.com  1300 551 715

 Scan the QR code to complete the feedback survey.



How will construction traffic and road impacts be managed?

Access to the development site is anticipated to be from a new access road that will be constructed as part of the Project. During the anticipated 24-month construction period, construction vehicles would range from light vehicles to 26 m B-Doubles. Light vehicles would arrive during AM/PM peaks with heavy vehicle deliveries to be spaced out during the day.

In NSW, the Environment Protection Authority (EPA) regulates construction noise hours as 7 AM–6 PM Monday – Friday and 8 AM–1 PM on Saturday. There is no construction work permitted on Sundays or public holidays.

Safety

Is the Project a fire risk?

Solar panels pose a low fire risk and rarely cause a fire independently. EDPR Australia will work closely with the RFS and NSW Fire and Rescue to confirm access requirements for the Solar Farm if there is a bushfire that moves into the area, or if a fire starts in the solar farm.

The BESS would be designed in accordance with the relevant Australian and international standards, with fire mitigation incorporated into the design to ensure its safe operation and minimise fire risk.

The Project will be equipped with a Supervisory Control and Data Acquisition (SCADA) and a Battery Management System (BMS) to monitor for faults in real-time, including smoke and system temperatures.

The BMS main role is to prevent damage to the battery cells from over-charging and over-discharging and to maintain the charge within the cells in the optimal performance range.

If the BMS detects any abnormal conditions, it shuts the battery down. This protects the cells from damage. Importantly, the BMS can act to shut a battery down before it reaches a point where it becomes a safety hazard. Management plans are produced when a project is approved (prior to commencement). This includes a Fire Management Plan to address the management of potential fires during construction, operations and decommissioning.

EDPR Australia will also:

- Adopt the RFS 'Planning for Bushfire Protection 2019' guidelines
- Build according to safe and effective bushfire safety designs
- Assess the risk in line with State and agency requirements
- Have fire suppression systems in place
- Have SafeWork NSW undertake regular site visits.

Are there health risks associated with living near a solar farm?



The use of electricity in daily life exposes us to low frequency electromagnetic fields (EMF) and are not considered a risk to human health (NSW Government 2022). EMF from solar arrays is typically less than household appliances and are not distinguishable from background levels at the site boundary.


Your kitchen stove has an EMF range of 2–30 milligauss (mG) and your hairdryer 1–70mG. Standing at the edge of a transmission powerline easement would be in the range of 10–50mG, and under a transmission powerline 20–200mG.

The current international standard for human exposure to limit EMF set up the International Commission of Non-Ionizing Radiation Protection (ICNIRP) is 2000mG (NSW Government 2022).

Information and Questions on Merino Solar Farm

 www.edpr.com/apac/merino-solar-farm

 merino@edp.com  1300 551 715

 Scan the QR code to complete the feedback survey.



Community

How many jobs will be created by the Project?

The Project would bring direct employment opportunities, with 200–300 full-time equivalent jobs expected during its up to 24-month construction period, and 4 permanent roles when in operation.

What are the benefits for the community and key stakeholders?

The solar farm will provide benefits through job creation and will provide an economic injection to the region using local services such as food, lodging, construction materials and tourism for the local area.

The Project will also provide benefits through a Community Benefit Sharing program, and feedback gathered through the EIS period will help to inform what initiatives might benefit from the program.

Will my land be devalued?

There is currently no documented evidence of

land devaluation related to solar farms in the area. As part of the EIS phase, we will prepare impressions for our neighbours to understand what the future outlook may be should the Project be approved.

Will the Project impact my public liability insurance?


The expansion of renewable energy across regional Australia has presented a growing trend of landowners either hosting or neighbouring both small and large-scale energy infrastructure.



Concerns regarding public liability insurance offering coverage in the rare event of natural disasters has become more prevalent as the renewables industry continues to grow.


There have been no previous examples of this issue to date, however, the Insurance Council of Australia has advised landowners to engage with their insurer or insurance broker to understand their cover, and to discuss any concerns regarding this matter with the Project team.

Cruz de Hierro, Spain
28.75 MW

Information and Questions on Merino Solar Farm

 www.edpr.com/apac/merino-solar-farm

 merino@edp.com  1300 551 715

 Scan the QR code to complete the feedback survey.



**Appendix E.10 Project Update September
2025**

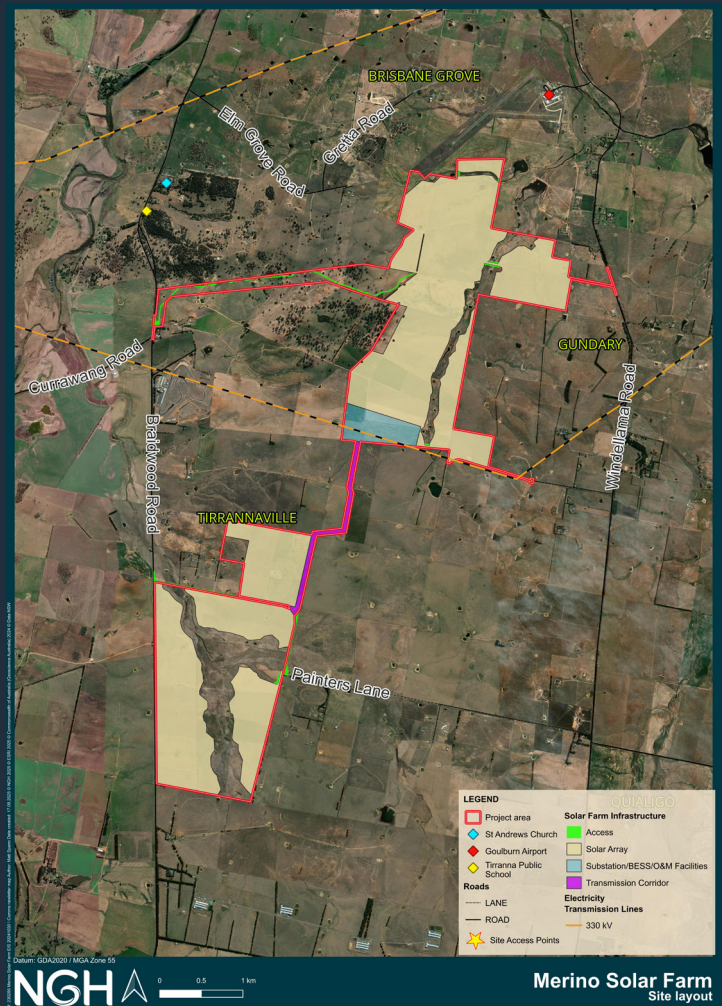
Merino Solar Farm

EDPR Australia is proposing to construct and operate a utility-scale Solar Farm and Battery Energy Storage System (BESS), located 6 km south of Goulburn, between Braidwood Road and Windellama Road, south of the Goulburn Airport.

Key features include:

- A 450 MW solar farm
- A 450 MW / 1,800 MWh BESS (enough for around 4 hours of energy storage)
- An onsite substation connected to the existing 330 kV Transgrid transmission line
- Supporting infrastructure such as transformers, inverters, operations and maintenance buildings, offices, and staff amenities
- A switchyard and parking facilities for ongoing operations.

We are now nearing the end of the Environmental Impact Statement (EIS) phase, where specialist studies have assessed the Project's anticipated impacts. These assessments also cover many of the questions and concerns raised by the community.



Information and questions on Merino Solar Farm

-  www.edpr.com/apac/merino-solar-farm
-  merino@edp.com
-  1300 551 715

What happens next?

The full EIS report, encompassing all specialist assessment outcomes, is due to be submitted to the Department of Planning, Housing and Infrastructure (DPHI) by the end of September.

Once the EIS is officially accepted as complete by the DPHI, it will be made available for public review and comment. During this period, various stakeholders, including the general public, industry, and government agencies, will have the opportunity to provide feedback, express support, raise concerns or object to the Project.

The exhibition period, which typically lasts a minimum of 28 days, is an important part of the assessment and approval process and ensures that all voices are heard. It is expected to be available in late September.

If you're interested in reviewing the EIS, providing comment, or following Project updates, keep an eye on the Merino Solar Farm Project page in the **Major Projects Portal**. This will be your primary source for accessing the EIS and staying informed on the next steps as the Project progresses. You can visit the webpage by visiting <https://www.planningportal.nsw.gov.au/major-projects/projects/merino-solar-farm>, or by scanning the QR code below.



Engagement to-date

Since starting the EIS process in mid to late 2024, we have been engaging with neighbours, community members, and key stakeholders to hear your views and answer your questions.

In February this year, we held two community events: a drop-in session at the Goulburn Soldiers Club and a pop-up booth at the Goulburn Marketplace. Together, these sessions brought more than 50 conversations with community members, giving people the chance to meet the Project team, raise concerns, and learn more about the opportunities the Project may bring. We also shared event details through newspaper ads, emails, letters, and local Facebook groups to make sure as many people as possible were aware and able to join in.

In addition to these events, we continued the conversation through one-on-one briefings and interviews, which are helping to shape the Social Impact Assessment. These discussions gave us valuable insight into community priorities, from protecting landscape values to exploring ideas for a Community Benefit Scheme should the Project go ahead.

Many of you have also expressed the strong passion and deep connection you feel for the region. We respect and value this shared commitment to looking out for one another and maintaining the strength of the community, and we look forward to continuing this conversation as the Project progresses.

Information and questions on Merino Solar Farm



www.edpr.com/apac/merino-solar-farm



merino@edp.com



1300 551 715

How your feedback has been considered during the EIS

Throughout the EIS process, community feedback played an important role in shaping studies, assessments, and Project design. Your input helped to:

- Focus technical studies on the issues that matter most locally
- Guide how assessments were carried out and what they examined
- Bring in local knowledge, observations, and lived experiences
- Identify potential design changes and mitigation measures early.

All feedback – whether supportive, critical, or in between – was valuable. Specific, constructive input was particularly powerful, as it directly influenced the scope and direction of studies and informed the development of the Project.

The following table outlines the top 5 concerns identified during the consultation process.

Topic	Number of mentions	Detail
<p>Project ownership</p>	<p>Concerns were raised by 66 stakeholders.</p>	<p>One of the strongest themes we heard throughout engagement was concern about the Project’s ownership and long-term commitment to the local community.</p> <p>Many people raised questions about EDP Renewables (EDPR), the parent company of EDPR Australia, and whether a multinational company is the right fit to deliver a major infrastructure project in regional NSW. The concerns most often mentioned included:</p> <ul style="list-style-type: none"> • Whether a foreign-owned company could be trusted to prioritise the best interests of the local community • How long-term maintenance, environmental responsibility, and eventual decommissioning would be managed • Who would be accountable if problems arose once the Project was built and operating. <p>Some community members also expressed a perception that decision-making lacked transparency or local oversight, and survey responses sometimes described the Project as benefiting “overseas interests” rather than local communities.</p> <p>In response, we have remained open and transparent about our ownership structure and history. While we are part of an international company, our Australian team is responsible for delivering, operating, and maintaining this Project. All electricity generated by the Merino Solar Farm will stay in Australia through the National Energy Market (NEM) and will support local energy needs, not overseas markets.</p>
<p>How it is assessed in the EIS</p>		
<p>Project ownership is not assessed in the EIS, as it relates to governance rather than environmental impacts. Concerns about long-term maintenance, environmental care, decommissioning, and accountability are instead addressed in the State Significant Development approvals process, which is expected to require a decommissioning and rehabilitation plan be prepared, which the Project has committed to. This plan would be updated at intervals throughout the operational life of the project, to ensure it is fit for purpose prior to decommissioning.</p> <p>These plans generally outline how infrastructure will be safely dismantled, how materials and waste will be managed, and how the land will be restored to an agreed use—such as farming or habitat—so it is not left derelict.</p>		



Information and questions on Merino Solar Farm

-  www.edpr.com/apac/merino-solar-farm
-  merino@edp.com
-  1300 551 715

Topic	Number of mentions	Detail
<p>Visual impact</p>	<p>Concerns were raised by approximately 45 stakeholders.</p>	<p>A key concern raised by the community is how the Project may change the rural landscape and the character of the region. Many people expressed worry that the solar farm and associated infrastructure could create a visual intrusion on scenic valleys and ridgelines, altering the look and feel of what is now seen as a natural and unspoiled setting.</p> <p>Specific concerns included the proximity of infrastructure to homes and roads, the potential impact on property values, and the perception that large-scale solar infrastructure would introduce an industrial character into a rural environment. Some survey respondents described the Project as likely to be visually dominant and therefore out of place in the landscape.</p> <p>Feedback also highlighted issues around proposed visual mitigation measures. Some community members felt the timeframe for vegetation screening to grow to an effective height would be too long, while others requested screening on their own properties to reduce the immediate impact on views.</p> <p>Questions were also raised about the Landscape and Visual Impact Assessment, with some people feeling that the modelling provided does not fully reflect the value of the current views to the local residents. A few stakeholders expressed concerns about the independence of the assessment and whether it accurately represents community experience living within the local landscape.</p>
<p>How it is assessed in the EIS</p>		
<p>The Landscape and Visual Impact Assessment must be undertaken in accordance with the relevant NSW State Government guideline – The Large-Scale Solar Energy Guideline: Technical Supplement – Landscape and Visual Impact Assessment 2024. It provides a framework for standardised assessment for an impact which is acknowledged to be uniquely subjective to each individual. The Landscape and Visual Impact Assessment includes photo montages from key viewpoints to understand potential changes, assess impacts, and identify avoidance where needed, and guide minimisation and mitigation measures.</p> <p>With the inclusion of one setback area, the Project now achieves no greater than a ‘low’ impact for any nearby residences, using the required multi-step modelling method that considers existing vegetation as well as topography and factors including the likely sensitivity of viewers. A low impact means that further mitigation, such as tree planting, is not required, increasing the confidence that the Project’s impacts will be manageable and acceptable.</p> <p>Glint and glare modelling is also being undertaken. It is not anticipated that the solar farm would have any significant impacts on receivers, including the nearby Goulburn Airport, relating to glint and glare.</p> <p>It is important to note as well, that the development footprint assessed in the EIS is the ‘worst-case’ scenario. True impacts may be less after construction, as the development footprint is refined during the detailed design of the solar farm post-approval.</p>		



Information and questions on Merino Solar Farm

-  www.edpr.com/apac/merino-solar-farm
-  merino@edp.com
-  1300 551 715

Topic	Number of mentions	Detail
<p>Consultation and transparency</p>	<p>Concerns were raised by 44 stakeholders.</p>	<p>A common theme in the feedback was that many people felt the engagement process had been inadequate or overly controlled. Some community members described feeling uninformed or excluded from key Project decisions, with survey responses highlighting frustration that information was not always shared proactively or was difficult to access. Words such as “brick wall,” “kept in the dark,” and “tokenistic” were used to describe the experience.</p> <p>Some nearby residents also noted they only became aware of the Project later in the planning process, and several stakeholders raised concerns about transparency, particularly around assessment methods, decision-making, and how benefits would be shared locally versus externally.</p> <p>We acknowledge the Project’s earlier pause. SEARs were received in 2023, the company was acquired later that year, and the EIS phase recommenced in October 2024.</p> <p>Since then, we have worked to provide a range of ways for people to engage, including mail-outs, online surveys, Project emails and phone lines, one-on-one meetings, a drop-in session, and a community pop-up. We also recognise that some information requested by stakeholders have not been immediately available while specialist studies were underway, but we have aimed to provide answers and updates now that EIS is coming to completion.</p>
<p>How it is assessed in the EIS</p>		
<p>Ongoing community and stakeholder engagement is documented in the EIS, including feedback received, how concerns have been addressed, and any resulting changes or commitments. Consultation logs are also supplied to the Department of Planning, Housing and Infrastructure so they have transparent oversight into engagement and consultation activities/discussions that occurred throughout the EIS.</p> <p>Engagement activities are designed to ensure communication is accessible, relevant, and responsive to the community. In addition to broad consultation, neighbouring landholders are engaged directly to input into detailed investigations and stay informed of technical findings relevant to them.</p>		



Information and questions on Merino Solar Farm

-  www.edpr.com/apac/merino-solar-farm
-  merino@edp.com
-  1300 551 715

Topic	Number of mentions	Detail
Traffic and access impacts	Concerns were raised by 39 stakeholders.	<p>Traffic and road safety were major concerns raised during engagement. Many community members were worried about increased heavy vehicle movements on local roads not designed for industrial use, and the potential for road damage, congestion, and impacts on property access and amenity values of local lane ways. Some residents also raised concerns about blocked driveways, unclear traffic routes, and possible delays to emergency services during construction.</p> <p>Several stakeholders expressed frustration about the lack of targeted consultation on traffic and access, particularly for residents living along potential haulage routes. Safety for children and families was highlighted as a key issue, with concerns that heavy vehicles could pose risks to children catching buses, playing near roads, or to residents carrying out day-to-day activities like mowing along verges.</p>

How it is assessed in the EIS

Local concerns led to an early traffic access option analysis to understand how to rationalise site access requirements, in advance of the Traffic Impact Assessment. Specific advice was sought to address the amenity value of local roads and concerns regarding potential cumulative impacts with Gundry Solar Farm. This was used to determine the access points now proposed, which minimise the use of Gundry Lane and restrict impacts to the western half of Painters Lane. These measures will directly address local amenity and potential for cumulative impacts. While not required to manage traffic or road safety, sealing of Painters Lane is offered as an additional benefit of the Project, to be funded through the Community Benefit Sharing.

The Traffic Impact Assessment concluded that while construction of the solar farm would increase traffic volumes on local roads such as Windellama Road and Braidwood Road, these roads have capacity to carry these increase traffic volumes for the duration of construction. This was in consideration of local school bus routes. Some road upgrades would be required to facilitate safe vehicle movements, such as widening of the western portion of Painters Lane, the construction of turning bays from Windellama Road into the Project site, and from Braidwood Road onto Painters Lane. These are now proposed as part of the Project.

A haulage route assessment from the Ports of Newcastle and Melbourne has been prepared, with the final choice of route to be made in the detailed design phase, post-approval. Additional permits are required for over size, over mass vehicle movements. A Dilapidation Report will be required to ensure local roads are returned to the same or better condition after construction finishes. Operational traffic volumes would be low (less than 20 vehicle movements a day) and would not pose any ongoing safety risks.



Information and questions on Merino Solar Farm

- 
www.edpr.com/apac/merino-solar-farm
- 
merino@edp.com
- 
 1300 551 715

Topic	Number of mentions	Detail
<p>Fire risk</p>	<p>Concerns were raised by approximately 38 stakeholders.</p>	<p>Bushfire risk was one of the most frequently raised concerns across all engagement activities. Many community members feared that the materials used in the solar panels, the battery and the scale of the development could increase the risk of bushfires in the region.</p> <p>Questions focused on the adequacy of fire mitigation measures, such as vegetation management, access for emergency services, and emergency response protocols. Around seven stakeholders specifically asked who would be responsible for fire safety, the role of the Rural Fire Service (RFS), and whether worst-case scenarios had been properly modelled. Survey respondents also voiced concern, drawing on recent bushfire seasons and expressing low confidence that the Project could be safely integrated into the local landscape. Some residents also raised related concerns about higher insurance premiums due to increased fire risk.</p> <p>Several residents near the Project site noted that the current site forms part of their evacuation plans and asked how this would be managed in an emergency.</p>
<p>How it is assessed in the EIS</p>		
<p>A Bushfire Assessment and Preliminary Hazard Assessment have now been completed, and outlined the following measures to lower the risk of a fire spreading to or from the site:</p> <ul style="list-style-type: none"> • An Asset Protection Zone of minimum 10m would be maintained surrounding solar farm infrastructure. The Asset Protection Zone surrounding the proposed BESS unit, substation, and associated ancillary infrastructure would be a minimum of 12m to the southeast and northwest, and 10m in all other directions. • The vegetation within the Asset Protection Zone would be managed to appropriate standards to reduce the risk of a fire spreading – including reduced tree and shrub coverage and management (e.g. mowing) of the understory layer • Site access would be constructed to provide suitable access to firefighting vehicles, such as an 8m carriageway (which may include grassed verges) • Provision of adequate firefighting resources, including water storage. <p>The BESS would also include fire management and prevention devices, including:</p> <ul style="list-style-type: none"> • Adequate spacing to prevent fire propagation between containers • Cooling systems to prevent thermal runaway • Fire alarm and suppression systems • Automatic sprinklers to cool adjacent containers in the event of a fire. 		
<p>Hazard assessments establish requirements and commitments within the EIS to prepare further studies, emergency response protocols and management plans post-approval, including:</p> <ul style="list-style-type: none"> • Fire Safety Study • Emergency Response Plan • Bush Fire Emergency Management and Operations Plan <p>The Fire Safety Study is typically developed with Fire and Rescue NSW post-approval, prior to construction, considering the operational capacity of local agencies. Plume dispersion modelling and analysis of potential toxic gas emissions (e.g., hydrogen fluoride) is sometimes prepared post-approval to inform emergency response planning, with results compared to relevant health criteria.</p>		



Information and questions on Merino Solar Farm

-  www.edpr.com/apac/merino-solar-farm
-  merino@edp.com
-  1300 551 715

Important social topics

In addition to environmental impacts and Project design considerations, many community members raised broader social concerns. Below is an overview of the key issues we have heard from the community, and how we are approaching them.

Impacts to mental health

We understand that changes in the local environment, especially those involving large-scale projects, can affect people in different ways, including their wellbeing. We take community feedback seriously and recognise that mental health is an important part of a resilient and connected community.

We acknowledge that the Project has caused stress for some neighbours and others in the wider community. It is important to us that we consider not only environmental and economic factors, but also the social and psychological impacts that may arise.

To help better understand these concerns, we have been carrying out assessments on issues such as visual changes and noise. We hope that providing clear information about these impacts will help reduce uncertainty and ease some of the anxiety within the community.

We also encourage everyone to take care of themselves, to check in with friends and neighbours, and to seek support if needed. Services such as Lifeline, Beyond Blue, and local mental health providers are available to offer help when things feel difficult. If this is you, we encourage you to seek support.

Lifeline: 13 1114 (24/7)

Beyond Blue: 1300 224 636 (24/7)

Will my house be devalued?

We heard strong concerns from the community about whether the Project could reduce property values, particularly for homes close to the site. People told us they worry about changes to views, rural character, and amenity, and some felt the Project might deter future buyers.

Because large-scale solar farms and batteries are still relatively new in Australia, there is limited direct evidence about their impact on property values. However, **research** by the Clean Energy Council found the opposite trend in some regions: a 2022 report showed property prices in six NSW and Victorian council areas with major renewable projects rose by 35–51% over five years, alongside growth in jobs, wages, and local economies.

For the Merino Solar Farm, our independent assessments have found that potential impacts from noise and visual changes are low to medium and can be readily managed. While property values are not something the planning system directly measures, we are committed to minimising impacts wherever possible to help protect the liveability and appeal of the local area.

Information and questions on Merino Solar Farm



www.edpr.com/apac/merino-solar-farm



merino@edp.com



1300 551 715

Will insurance for neighbouring landholders be impacted?

We understand that neighbouring landowners may be concerned about insurance premiums rising as a result of a renewable development being nearby.

While insurance providers apply their own risk assessment and pricing models, the EIS demonstrates that the risks associated with this Project are clearly understood and can be effectively mitigated with a high degree of confidence.

Importantly, the Insurance Council of Australia has stated that they are *“not aware of any instances where Insurance Council members have been unable to provide insurance or have increased premiums as a result of a farm (or a neighbouring property) hosting energy infrastructure.”*

For more information, we encourage you to refer to the [Insurance Council of Australia’s statement](#) regarding farm insurance and energy infrastructure.

What benefits will the community receive?

We are working with Council and the community to design a Community Benefit Sharing program that will deliver lasting benefits for the region. Our aim is to ensure that the advantages of hosting the Merino Solar Farm extend beyond jobs and services during construction and continue to support the community well into the future.

Community Benefit Sharing is a formal part of the planning process for State Significant Developments in NSW. It is not compensation but a way to create tangible, positive outcomes for local communities. Programs can include support for education and skills development, community health, local infrastructure, or other priorities identified by residents.

Community feedback, insights from the Social Impact Assessment, and recommendations from agencies are all helping to shape the design of this program. We also heard concerns about whether the benefits would genuinely reach those most affected, or whether they would feel tokenistic. We acknowledge these concerns and are committed to working with the community to develop a fair and transparent approach that reflects local priorities.

As a result, we have proposed a share of the fund is distributed to those most affected by the Project; direct offers have been made to those landholders closest to the Project. Where these are not accepted, the funds will revert to Council to administer.



Information and questions on Merino Solar Farm



www.edpr.com/apac/merino-solar-farm



merino@edp.com



1300 551 715

Get in touch

If you have any further questions, please don't hesitate to contact us using the methods listed below and a member of our team will be in touch.



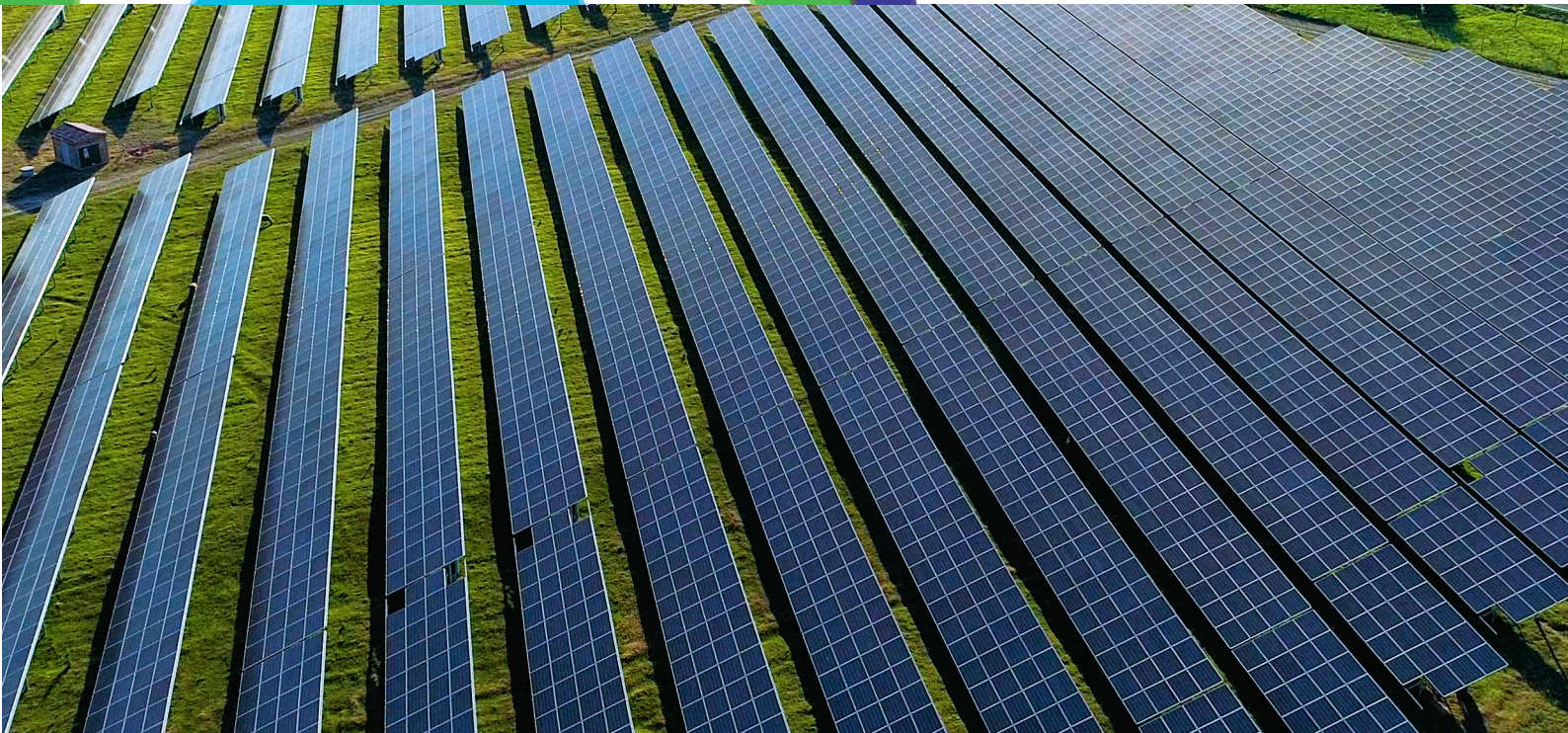
www.edpr.com/apac/en/merino-solar-farm



merino@edp.com



1300 551 715



Follow us



**Appendix E.11 Project Fact
Sheet**

Merino Solar Farm

FACT SHEET

EDP Renewables (EDPR) Australia is proposing to construct and operate a utility-scale Solar Farm and Battery Energy Storage System (BESS) in the localities of Tirrannaville and Gundry NSW, located 6 km south of Goulburn, to the east of Braidwood Road.

The development would connect renewable solar energy to the existing Transgrid high voltage powerline that transects the site. It would also assist the national electricity grid at times of peak demand and in times of emergency with additional energy storage.

The project is expected to provide 450MW of solar capacity and a BESS capacity of 450MW/1800MWh.

The BESS capacity has been increased from the original 300MW outlined in the Scoping Report.

EDP Renewables Australia

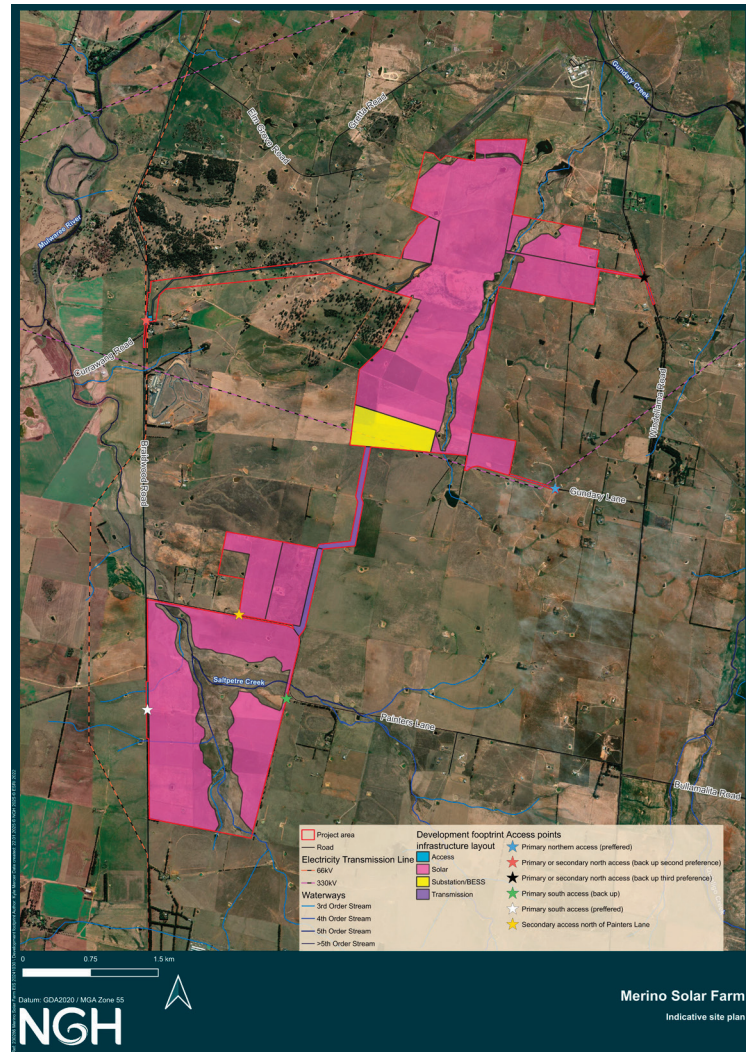
In December 2023, EDPR Australia acquired ITP Development, and the company became EDPR Australia, a part of EDP Renewables APAC, a leading clean energy hub for the region.

EDPR Australia develops utility and town-scale solar farms in Australia and undertakes solar farm landholder engagement, system design, planning approvals, financing, electrical connection approvals and commissioning.

EDPR Australia maintains relationships with multiple stakeholders such as communities, governments and contractors to ensure successful project delivery. We hold a broad portfolio of solar projects in the New South Wales region and are moving towards battery storage development.

The Project

The Merino Solar Farm project will utilise the latest technology in the sector, complying with all safety and hazard parameters that are highly regulated by the Australian Government.



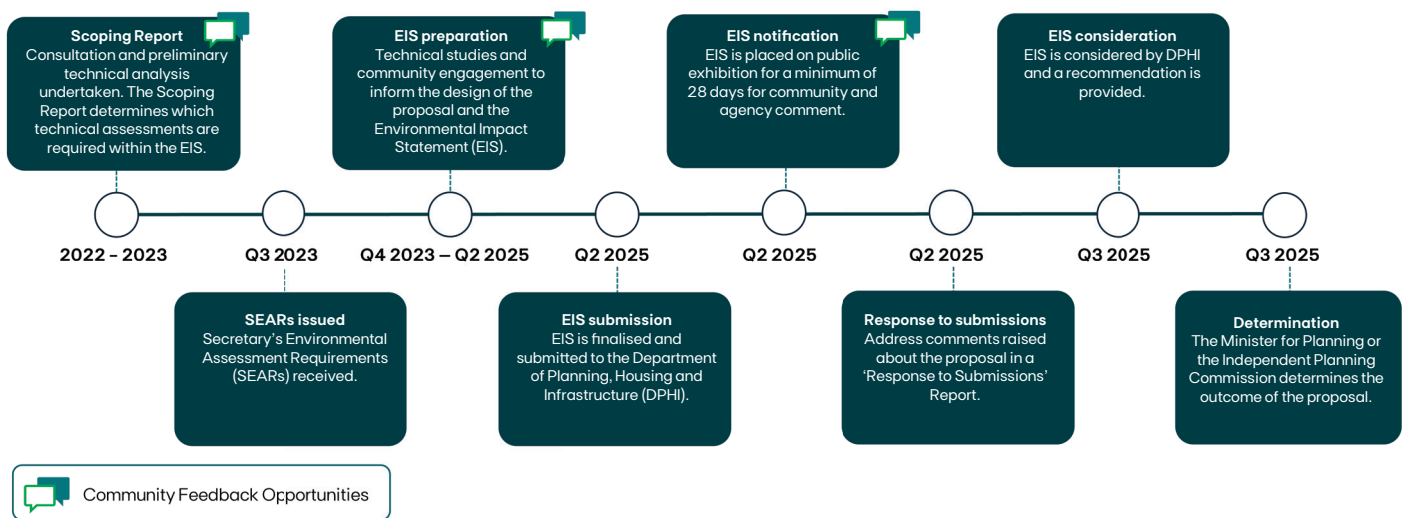
Construction and operation of the project would involve the following key components:

- 450 MW Solar Farm including:
 - 450 MW/1800MWh (4 operational hours) BESS
 - An onsite substation connecting the BESS to the existing 330kV Transgrid transmission line
 - Associated infrastructure including transformers and inverters
 - Operations and maintenance (O&M) buildings, offices, staff amenities
- Switchyard
- Parking, site office and amenities for operational use.

Project Update

In late 2022, ITP began engaging with the community and stakeholders to complete a Scoping Report for an NSW State Significant Development (SSD) application, which was submitted to the NSW Department of Planning, Housing, and Infrastructure (DPHI) in June 2023. ITP received the Secretary's Environmental Assessment Requirements on 14 July 2023. The SEARs outline the necessary information to be included in an Environmental Impact Statement (EIS), which EDPR Australia are now preparing.

The EIS will fully assess the proposed Solar Farm and BESS, considering community input and specialist reports on visual impact, noise, biodiversity, heritage, traffic, transport, social impact and more. EDPR Australia plans to submit the EIS to DPHI Q2 2025. After submission, the EIS will be publicly exhibited for a minimum of 28 days for feedback and response. EDPR Australia will address community and stakeholder concerns in a Submissions Report, after which DPHI will decide whether or not to approve the project.



The Benefits

Increases clean energy production and storage

The Solar Farm will provide renewable energy directly into the electricity network with the sites pre-existing high voltage power lines. The BESS will improve the stability and reliability of the electricity network by storing energy during periods of low demand, and dispatching energy during periods of peak demand and emergency events.

Create jobs

The project will create jobs in regional NSW. Estimated job numbers are approximately 200-300 full-time equivalent (FTE) during the peak construction phase and 50 casual staff and 4 full-time staff during operation.

Income for local area

The project will diversify income and increase revenue to ancillary services such as food and accommodation to the local area.


Merino Solar Farm Site


The development footprint will be approximately 760 hectares. Its location has good solar resources, good access to transmission infrastructure with suitable road access for construction and is in close proximity to the Goulburn local workforce.

Questions and Feedback


Engaging with the local community is essential to us. EDPR Australia seeks to ensure that neighbours, stakeholders and the wider community have access to information regarding the Project and how it may affect you so that you can participate in the Proposal and help to shape it.

For more information, project updates and to provide feedback, please contact us:

 merino@edp.com

 1300 551 715

 www.edpr.com/apac/merino-solar-farm

 Complete the feedback survey by scanning the QR code



Appendix E.12 Project FAQ



Solar In Your Community: Your Guide To The Process

About the Project

Who is EDP Renewables?

EDP Renewables (EDPR), is a global leader in the renewables space. ITP Development – the developer responsible for the Merino Solar Farm – was acquired by EDPR in December 2023. EDPR Australia is now the developer responsible for the Merino Solar Farm.

EDPR Australia is part of EDPR Asia-Pacific and more broadly, EDP Renewables (EDPR). EDPR has over 16.6 Gigawatts (GW) of renewable energy projects in operation globally, including many wind and solar projects.

Why Tirrannaville?

Careful consideration is needed to select the most appropriate site for a solar farm. The proposed site was chosen due to:

- Access to existing high voltage transmission networks (reducing the need for extensive transmission work upgrades)
- Limited vegetation due to historical grazing on the land, with land not being classified as Biophysical Strategic Agricultural Land (BSAL) or as Class 1, 2, or 3 under NSW land classification
- The site has good solar resources
- The site is close to Goulburn's local workforce (providing local employment opportunities) and other ancillary services such as lodging and food providers.

We understand there are a number of proposed energy developments in the region, and should you have any concerns regarding this, please contact us.

Why is this Project located outside of a Renewable Energy Zone (REZ)?

Renewable Energy Zones (REZ) are relatively new in Australia. REZs have been created by the NSW State Government as a planning tool to make sure that new energy infrastructure projects are matched with transmission and demand. These areas have been identified as areas where substantial transmission upgrades will be developed to allow for more energy input into the National Electricity Market (NEM) grid.

There is only so much grid capacity available within the

transmission within these REZ areas, so while these REZs are at the forefront of new renewable energy projects consideration, it is still allowable to locate energy projects outside these zones. Significant increases in renewable energy generation are needed to ensure future energy security, and projects outside of REZs are allowed and also necessary to meet this growing demand. The Merino Solar Farm is located in an area that has available grid capacity, has access to an existing transmission point, and does not require larger transmission upgrades.

What is being proposed?

EDPR Australia is pursuing development approval for a 450 MW, utility-scale solar farm and 450MW/1800 MW/hour battery energy storage system (BESS) located in the locality of Tirrannaville, 6 kilometres (km) south of Goulburn, NSW. The development footprint of the Project is 760 hectares (Ha).

What is the Project status?

The Merino Solar Farm received Secretary's Environmental Assessment Requirements (SEARs) in August 2023 and is now in the Environmental Impact Statement (EIS) phase of the NSW state significant development (SSD) application process.

Technical assessments are currently being undertaken and will be comprised within the EIS. Once complete, the EIS will be submitted to the Department of Planning, Housing and Infrastructure (DPHI), which is estimated to be in Q2 2025. It will be placed on public exhibition for a minimum of 28 days for community and agency comment.

A Response to Submissions Report will be completed following the exhibition period addressing comments received. Following this, the DPHI will determine the outcome of the project.

Who approves the Project?

As a state-significant project, the Project will be reviewed by the NSW Department of Planning,

Merino Solar Farm FAQ

Housing and Infrastructure (DPHI) who will provide final determination.

Why is the Project needed?

NSW has a 20-year renewable energy roadmap, with a goal to reduce emissions by 70% by 2035 compared to 2005 levels and increase NSW's uptake in renewable energy generation. This statewide initiative will create 6,300 construction and 2,800 ongoing jobs in regional Australia and will reduce electricity prices in the state by \$130 per year for households, \$430 for small businesses and reduce NSW's carbon emissions by approximately 90 million tons (NSW Government 2020).

Currently, the renewable energy generation into the National Energy Market in NSW is 36% (Energy NSW 2024), which includes large scale solar, hydro power stations, wind, and biomass power stations.

This project in NSW will contribute to achieving this target, create new jobs, and contribute to electricity price reduction and carbon emissions reduction.

How is energy created from the sun?

Solar panels harness sunlight and transform it into direct current (DC) electricity. Inverters then convert this power into alternating current (AC), which can be integrated into the electricity grid. From here, it is distributed to power homes and businesses through the National Energy Market (NEM).

What is a Battery Energy Storage System (BESS)?

A BESS is an energy storage system that uses a group of batteries to store electrical energy from a variety of sources. The system compensates for the intermittency of sources, providing backup power to address certain constraints such as weather conditions and lack of grid space. They are crucial to the increased adoption of dispersed energy sources and infrastructure.

How much energy will the Merino Farm produce?

The solar farm will produce approximately 1,095 GWh a year, enough to power around 193,400 homes (assuming average annual household consumption of 5,662 kWh) and offsets around 657,000 tonnes of CO₂-e pa (assuming grid Emissions Intensity of 0.6 tCO₂-e/MWh).

Environmental

What is the land currently used for?

A large portion of the land is currently being used for

sheep grazing operations. It is anticipated that sheep grazing will continue once the Project is operational.

What is the impact to agricultural land?

Agreements are in place with landholders to maintain the properties with agrisolar practices. This means existing sheep grazing can continue across a large portion of the project area.

Solar farm trials in the NSW Central West found sheep grazing within solar farms produced better wool – and more of it – in the five years since the project commenced.

A detailed agricultural impact assessment is being undertaken by an accredited agricultural consultant in accordance with the NSW Solar Energy Guideline (appendix A, Large Scale Solar Guideline NSW DPHI).

Will there be any visual impact?

The installation of solar panels will inevitably have some effect on the current look of the landscape. A Landscape and Visual Impact Assessment (LVIA) will be undertaken within the EIS, which will work to determine the visual impact of the solar farm.

EDPR Australia is committed to working closely with the local community to address any concerns and encourages the community to approach us with any issues that may arise.

Will glare be an issue?

The primary function of PV panels is to absorb sunlight rather than reflect it. The technical process in manufacturing PV panels includes anti-reflection, hydrophobic layers that minimise the potential for sunlight reflection. The Civilian Aviation Safety Authority (CASA) has approved projects close to the airport reporting that more glare is expected from the local waterways and the sun itself.

Glaring is not an issue for Solar Farms, as evidenced by the fact that solar panels have been deployed in many areas such as Residential, Industrial and Sensitive Facilities, and are even present in airports around the world, including Ballarat, Adelaide, Brisbane, Changi (Singapore), Denver and Dusseldorf (and many more).

What is the lifespan of a solar farm?

EDPR Australia has applied for a Project term length of 30 years. After this period of time, EDPR Australia can apply to the NSW DPHI (or equivalent) to refurbish the site at the end of the operational life of

the components. Should this not be granted, or EDPR Australia opts to not extend the life of the project, it will be decommissioned.

The decommissioning process is a critical part of the development application process, and a decommissioning plan must be included for the development to be considered. At the end of life, the solar panels will be removed and decommissioned. The land will be rehabilitated and returned to its original use.

Do solar farms impact native flora and fauna?

EDPR Australia has engaged expert consultants who will undertake flora and fauna surveys to understand the ecological characteristics of the site. They are committed to minimising impacts on native flora and fauna by designing the project to allow species to continue to thrive during the construction and operation phases. During these phases, management plans will be developed to ensure this compliance is maintained.

Will Cultural Heritage be preserved and protected?

Preserving and protecting Cultural Heritage is a priority for the Project and EDPR Australia is committed to adhering to all legislation to achieve this.

An Aboriginal Cultural Heritage Assessment (ACHA), which includes field surveys, is required as part of the EIS process. This will include rigorous community engagement with Registered Aboriginal Parties (RAPs) and other community members throughout the community engagement process to ensure due diligence and maintain strong relationships and respect with First Nations peoples and cultures.

Construction

When will construction begin and how long will construction take?

The construction start date is dependent on a variety of factors, including DPHI approval. It is anticipated that construction will take approximately 24 months.

Will there be noise impact?

As part of our EIS process, a detailed noise assessment will be completed for both the construction and operation phases of the Project. Outcomes of these assessments will be shared.

Additionally, working hours will be dictated by the project planning approval and the NSW Environmental Protection Authority (EPA) guidelines. This outlines no work to be undertaken at night, on Sundays, or public

holidays without prior approval or consultation with neighbours.

Will there be increased traffic?

During the construction period, both light and heavy vehicles will access the site during working hours to deliver both equipment and workers to the site. Once operational, the site will generate very low levels of traffic.

As part of the EIS phase, a detailed traffic assessment will be prepared that will assess the impacts of construction traffic, including the considerations associated with intersections and delivery routes.

How will construction traffic and road impacts be managed?

Access to the development site is anticipated to be from a new access road that will be constructed as part of the Project. During the anticipated 24-month construction period, construction vehicles would range from light vehicles to 26 m B-Doubles. Light vehicles would arrive during AM/PM peaks with heavy vehicle deliveries to be spaced out during the day.

In NSW, the Environment Protection Authority (EPA) regulates construction noise hours as 7 AM–6 PM Monday – Friday and 8 AM–1 PM on Saturday. There is no construction work permitted on Sundays or public holidays.

Safety

Is the Project a fire risk?

Solar panels pose a low fire risk and rarely cause a fire independently. EDPR Australia will work closely with the RFS and NSW Fire and Rescue to confirm access requirements for the Solar Farm if there is a bushfire that moves into the area, or if a fire starts in the solar farm.

The BESS would be designed in accordance with the relevant Australian and international standards, with fire mitigation incorporated into the design to ensure its safe operation and minimise fire risk.

The Project will be equipped with a Supervisory Control and Data Acquisition (SCADA) and a Battery Management System (BMS) to monitor for faults in real-time, including smoke and system temperatures.

The BMS main role is to prevent damage to the battery cells from over-charging and over-discharging and to maintain the charge within the cells in the optimal performance range.

If the BMS detects any abnormal conditions, it shuts the battery down. This protects the cells from damage. Importantly, the BMS can act to shut a battery down before it reaches a point where it becomes a safety hazard.

Management plans are produced when a project is approved (prior to commencement). This includes a Fire Management Plan to address the management of potential fires during construction, operations and decommissioning.

EDPR Australia will also:

- Adopt the RFS 'Planning for Bushfire Protection 2019' guidelines
- Build according to safe and effective bushfire safety designs
- Assess the risk in line with State and agency requirements
- Have fire suppression systems in place
- Have SafeWork NSW undertake regular site visits.

Are there health risks associated with living near a solar farm?

The use of electricity in daily life exposes us to low frequency electromagnetic fields (EMF) and are not considered a risk to human health (NSW Government 2022). EMF from solar arrays is typically less than household appliances and are not distinguishable from background levels at the site boundary.

Your kitchen stove has an EMF range of 2-30 milligauss (mG) and your hairdryer 1-70mG. Standing at the edge of a transmission powerline easement would be in the range of 10-50mG, and under a transmission powerline 20-200mG.

The current international standard for human exposure to limit EMF set up the International Commission of Non-Ionizing Radiation Protection (ICNIRP) is 2000mG (NSW Government 2022).

Community

How many jobs will be created by the Project?

The Project would bring direct employment opportunities, with 200-300 full-time equivalent jobs expected during its up to 24-month construction period, and 4 permanent roles when in operation.

What are the benefits for the community and key stakeholders?

The solar farm will provide benefits through job creation and will provide an economic injection to the region using local services such as food, lodging, construction materials and tourism for the local area.

The Project will also provide benefits through a Community Benefit Sharing program, and feedback gathered through the EIS period will help to inform what initiatives might benefit from the program.

Will my land be devalued?

There is currently no documented evidence of land devaluation related to solar farms in the area. As part of the EIS phase, we will prepare impressions for our neighbours to understand what the future outlook may be should the Project be approved.

Will the Project impact my public liability insurance?

The expansion of renewable energy across regional Australia has presented a growing trend of landowners either hosting or neighbouring both small and large-scale energy infrastructure.

Concerns regarding public liability insurance offering coverage in the rare event of natural disasters has become more prevalent as the renewables industry continues to grow.

There have been no previous examples of this issue to date, however, the Insurance Council of Australia has advised landowners to engage with their insurer or insurance broker to understand their cover, and to discuss any concerns regarding this matter with the Project team.

EDP Renewables Australia

Canberra Office
Level 4, 54 Marcus Clarke Street
Canberra, ACT 2601

E: merino@edp.com
T: 1300 551 715

www.edpr.com/apac/merino-solar-farm

Sydney Office
Suite 801, 117 York Street,
Sydney NSW 2000



Appendix E.13 Project Business

Cards



edp
Renewables

Have your say about the Merino Solar Farm



SURVEY CLOSES 4:00 PM AEST, 14 MARCH 2025

Visit the website:



1300 551 715



merino@edp.com



Appendix E.14 EDM 1 – 20 November 2024



Good afternoon,

As you may recall from our correspondence in 2022 and 2023, we intend to lodge a State Significant Development (SSD) Development Application for the proposed Merino Solar Farm, located approximately 6 km south of Goulburn.

The Solar Farm would have a generation capacity of up to 450 megawatts (MW) and would feature a battery energy storage system (BESS) of approximately 300 MW / 1200 megawatt-hours (MWh). The solar farm would connect directly to the National Energy Market (NEM) Grid through an existing Transgrid 330kV transmission line.



EDP Renewables Australia and ITP Development Australia

In December 2023, EDP Renewables (EDPR) acquired ITP Development (the Developer who was proposing the Merino Solar Farm) and the company became part of EDP Renewables APAC, a leading clean energy hub for the region.

The EDPR Australia team develops utility and town-scale solar farms in Australia and undertakes solar farm landholder engagement, system design, planning approvals, financing, electrical connection approvals and commissioning.

EDPR Australia maintains stakeholder relationships (such as those with communities, governments and contractors) related to previously owned ITP Development projects. EDPR Australia holds a broad portfolio of solar projects in the NSW region and is moving towards battery storage development.

Project Update

In 2022, ITP Development commenced engagement with the community and key stakeholders to complete the initial stages of a NSW SSD planning application, called a Scoping Report.

The Scoping Report was submitted to the NSW Government Department of Planning and Environment (DPE) (now known as the NSW Department of Planning, Housing and Infrastructure due to a government restructure earlier this year) in June 2023. It was assessed by DPHI and relevant agencies, and Secretary's Environmental Assessment Requirements (SEARs) were issued on the 14th of July 2023.

To view the Scoping Report and issued SEARs, visit the NSW Major Projects Portal [here](#).

What are SEARs?

SEARs are issued in response to a Scoping Report and list the information and detailed specialist assessments that need to be undertaken in the Environmental Impact Statement (EIS) phase of the development application. The Project is now beginning to work through the detailed assessment required for the EIS, which will accompany the development application.

The EIS will include specialist impact assessment reports, such as:

- Visual impact
 - Noise
 - Biodiversity
 - Heritage
 - Traffic and Transport
 - Social Impact.
-

How to learn more and provide feedback

Engaging with the local community is essential to us. EDPR Australia seeks to ensure that neighbours, stakeholders and the wider community have access to information regarding the Project, how it may affect you, and the SSD application process so that you can participate in the Project and help to shape it.

We will be meeting with neighbours, facilitating community information sessions, and sharing information on the Project and its progresses. Your feedback will help inform our studies as part of the EIS process.

We will be facilitating two community drop-in information events in early February 2025 and will provide more details on this soon.

If you wish to learn more about the Project, visit the Project website [here](#).
Alternatively, if have any questions or wish to discuss the Project further, please feel free to contact us at **1300 551 715** or email us at merino@edp.com.

Kind regards,

Mishka Talent

Business Development - Australia

EDP Renewables Australia

Appendix E.15 EDM 2 – 02 February 2025



Good morning,

As you may recall from our correspondence in 2022, 2023 and 2024, EDPR Australia (formerly ITP Development) intended to lodge a NSW State Significant Development (SSD) planning application for the proposed Merino Solar Farm, located approximately 6 km south of Goulburn, and is currently in the Environmental Impact Statement (EIS) phase of the [process](#).

The solar energy produced by the Merino Solar Farm would be used to send clean, renewable power into the NSW electricity grid to serve the needs of both the local community and broader NSW. It would assist in the rapid decarbonisation initiative underlaid by the NSW government's critical Electricity Infrastructure Roadmap.

Since our last correspondence, there are a number of new updates which we wish to inform you of.

Project update

Firstly, the BESS has been upgraded from the originally proposed 300MW / 1200 megawatt- hours (MWh) to a storage capacity of 450MW / 1800 MWh.

This change is to provide further storage capacity and provide additional electricity grid stabilisation in times of peak demand. No changes are proposed for the solar generation capacity, and this change is in relation to the BESS only. Additionally, there have been

very minor changes in the land associated with the Project, which have resulted from the roads required to access the site.

Community drop-in information session

The Project Team will be undertaking community engagement activities in February to answer questions and gather insight which will help to inform our studies as part of the EIS and help shape the Project.

We will be facilitating a community drop-in information session and invite you to attend. The details are as follows:

Date	Tuesday 18 February 2025
Time	2pm - 6pm
Location	Goulburn Soldiers Club, Merino Room
Address	15/17 Market St Goulburn NSW

About EDPR Australia

In November 2023, EDP Renewables (EDPR) acquired ITP Development (the Developer who was proposing the Merino Solar Farm) and the company became part of EDP Renewables APAC, a leading clean energy hub for the region.

The EDPR Australia team develops utility and town-scale solar farms in Australia and undertakes solar farm landholder engagement, system design, planning approvals, financing, electrical connection approvals and commissioning.

EDPR Australia maintains stakeholder relationships (such as those with communities, governments and contractors) related to

previously owned ITP Development projects. EDPR Australia holds a broad portfolio of solar projects in the NSW region and is moving towards battery storage development.

Project Benefits

The Merino Solar Farm would bring substantial benefits to the area, both directly and indirectly. The development of the Project would create approximately 200-300 full-time equivalent (FTE) jobs during its construction period, and approximately 4 FTE and 50 casual operational jobs during its operational life. The construction of the Project is anticipated to take approximately 24-months.

The Project would diversify income and increase economic revenue in the region, with local service providers being utilised through ancillary services such as food, lodging, and tourism operators in the local area. The Project will also significantly contribute toward national energy security and would contribute toward the NSW Government's aim of reaching net-zero emissions by 2050 by producing clean renewable energy to the national electricity grid.

Local Benefit Sharing

Community Benefit Schemes are an important aspect of SSDs in NSW. Community Benefit Schemes are intended to share the benefits of the development amongst the community more broadly, beyond benefits seen through jobs and ancillary services.

We would love to hear your ideas on local priorities and how to share Project benefits as we look for ways to invest in the local community.

How to learn more and provide feedback

Engaging with the local community is essential to us. EDPR Australia seeks to ensure that neighbours, stakeholders and the wider community have access to information regarding the Proposal, how it may affect you, and the SSD application process so that you can participate in the Proposal and help to shape it.

We will be meeting with neighbours and sharing information on the Proposal and its progresses. Your feedback will help inform our studies as part of the EIS process. As previously outlined, we will also be hosting a community information session on Tuesday 18 February 2025, with further engagement activities in early 2025.

If you wish to learn more about the Proposal, visit the Project website [here](#). Alternatively, if have any questions or wish to discuss the Proposal further, please feel free to contact us at **1300 551 715** or email us at merino@edp.com.

Kind regards,

Mishka Talent | Business Development - Australia

EDP Renewables Australia

Appendix E.16 EDM 3 – 26 February

2025



Community information events

Thank you to everyone who took the time to connect with us last week—whether at our community information session at the Soldiers Club, our pop-up information stall at the Goulburn Marketplace, or through individual meetings. Your time and input is appreciated.

It was a valuable opportunity to discuss the proposed Merino Solar Farm with community members, nearby residents, and local groups. The insights and feedback we received were incredibly helpful and will play a key role in shaping the project as we move forward with the Environmental Impact Statement (EIS).

Many important questions were raised, and we are now working on detailed responses, which we will include in our next newsletter. We appreciate your patience as we take the time to provide thorough answers.



EIS submission and next steps

The purpose of the EIS is to assess the economic, environmental and social impacts of the project. It helps the community, councils, government agencies and NSW Government Department of Planning, Housing and Infrastructure (DPHI) get a better understanding of the project, so they can make informed decisions on the merit of the proposal.

EDPR aims to submit the EIS report to the DPHI in mid-2025. Community and stakeholder engagement over the previous months will be summarised within the EIS, along with the outcomes of the specialist reports that are currently underway.

Once the EIS is lodged on the [NSW Major Projects portal](#), it will be made available for public comment, typically for a minimum of 28 days. During this period, the local community and stakeholders can review the EIS and submit their feedback.

You will be notified of this next phase of the process.

About EDPR Australia

In November 2023, EDP Renewables (EDPR) acquired ITP Development (the Developer who was proposing the Merino Solar Farm) and the company became part of EDP Renewables APAC, a leading clean energy hub for the region.

The EDPR Australia team develops utility and town-scale solar farms in Australia and undertakes solar farm landholder engagement, system design, planning approvals, financing, electrical connection approvals and commissioning.

EDPR Australia maintains stakeholder relationships (such as those with communities, governments and contractors) related to previously owned ITP Development projects. EDPR Australia holds a broad portfolio of solar projects in the NSW region and is moving towards battery storage development.

Give feedback

Community input plays an important role in the development of the Merino Solar Farm, and it's not too late to provide your feedback! Scan the QR code below (or click on it) to complete the survey before 14 March 2025.



Project Benefits

The Merino Solar Farm would bring substantial benefits to the area, both directly and indirectly. The development of the Project would create approximately 200-300 full-time equivalent (FTE) jobs during its construction period, and approximately 4 FTE and 50 casual operational jobs during its operational life. The construction of the Project is anticipated to take approximately 24-months.

The Project would diversify income and increase economic revenue in the region, with local service providers being utilised through ancillary services such as food, lodging, and tourism operators in the local area. The Project will also significantly contribute toward national energy security and would contribute toward the NSW Government's aim of reaching net-zero emissions by 2050 by producing clean renewable energy to the national electricity grid.

Local Benefit Sharing

Community Benefit Schemes are an important aspect of SSDs in NSW. Community Benefit Schemes are intended to share the benefits of the development amongst the community more broadly, beyond benefits seen through jobs and ancillary services.

We would love to hear your ideas on local priorities and how to share Project benefits as we look for ways to invest in the local community.

How to learn more and provide feedback

Engaging with the local community is essential to us. EDPR Australia seeks to ensure that neighbours, stakeholders and the wider community have access to information regarding the Proposal, how it may affect you, and the SSD application process so that you can participate in the Proposal and help to shape it.

We will be meeting with neighbours and sharing information on the Proposal and its progresses. Your feedback will help inform our studies as part of the EIS process. As previously outlined, we will also be hosting a community information session on Tuesday 18 February 2025, with further engagement activities in early 2025.

If you wish to learn more about the Proposal, visit the Project website [here](#). Alternatively, if have any questions or wish to discuss the Proposal further, please feel free to contact us at **1300 551 715** or email us at merino@edp.com.

Kind regards,

Mishka Talent | Business Development - Australia

EDP Renewables Australia

**Appendix E.17 EDM 4 – 19 September
2025**

EDM

Merino Solar Farm – EIS Update

We're nearing an important milestone

EDPR Australia is preparing to submit the Environmental Impact Statement (EIS) for the proposed Merino Solar Farm and Battery Energy Storage System (BESS), located just south of Goulburn.

Project snapshot

- A 450 MW solar farm
 - A 450 MW / 1,800 MWh BESS (enough for around 4 hours of energy storage)
 - An onsite substation connected to the existing 330 kV Transgrid transmission line
 - Supporting infrastructure such as transformers, inverters, operations and maintenance buildings, offices, and staff amenities
 - A switchyard and parking facilities for ongoing operations.
-

What's next?

The full EIS will be submitted to the NSW Department of Planning, Housing and Infrastructure (DPHI) by the end of September. The EIS is where specialist studies have assessed the Project's anticipated impacts. These assessments also cover many questions and concerns that have been raised by the community.

The EIS will be placed on exhibited for public comment for at least 28 days. During this period, various stakeholders, including the general public, industry, and government agencies, will have the opportunity to provide feedback, express support, raise concerns or object to the Project.

[View the project page on the Major Projects Portal](#)

How your feedback has been considered in the EIS

Throughout the EIS process, community feedback played an important role in shaping studies, assessments, and Project design. Your input helped to:

- Focus technical studies on the issues that matter most locally
- Guide how assessments were carried out and what they examined

- Bring in local knowledge, observations, and lived experiences
- Identify potential design changes and mitigation measures early.

All feedback - whether supportive, critical, or in between - was valuable. Specific, constructive input was particularly powerful, as it directly influenced the scope and direction of studies and informed the development of the Project.

Below is a snapshot of the top 5 key topics that were raised during the EIS phase (both during wider engagement activities and through the community feedback survey) and how the concern is assessed and addressed.

Topic	What We Heard	How It's Assessed
Project ownership	One of the strongest themes we heard throughout engagement was concern about the Project's ownership and long-term commitment to the local community.	We have remained open and transparent about our ownership structure and history. While we are part of an international company, our Australian team is responsible for delivering, operating, and maintaining this Project. While ownership isn't assessed in the EIS, issues like maintenance, environmental care and decommissioning are managed through the State Significant Development process, which requires a binding decommissioning plan and ongoing site obligations.
Visual impact	A key concern raised by the community is how the Project may change the rural landscape and the character of the region	The EIS included a Landscape & Visual Impact Assessment following NSW Government guidelines . With inclusion of one setback area and the multi-step modelling method that considers existing vegetation and topography, the Project now achieves no greater than a 'low' impact for nearby residences. Glint and glare modelling is also being undertaken, however it's not anticipated that the Project would have any significant impact on receivers including the nearby Goulburn Airport.

Topic	What We Heard	How It's Assessed
Consultation & transparency	A common theme in the feedback was that many people felt the engagement process had been inadequate or overly controlled	We acknowledge the Project's earlier pause. SEARs were received in 2023, the company was acquired later that year, and the EIS phase recommenced in October 2024. We have worked to provide a range of ways for people to engage and understand what concerns and opportunities have been identified by the community. Engagement is documented in the EIS, including how feedback has influenced studies. The DPHI will also receive full consultation logs.
Traffic & access	Stakeholders raised safety concerns about heavy vehicles, school bus routes, and road wear	The Traffic Impact Assessment found local roads (including the consideration of school bus routes) can manage construction traffic with some upgrades that have been included within the Project's design (turning bays, widening the western portion of Painters Lane). Access points were chosen to reduce cumulative impacts. A Dilapidation Report will also be required to ensure roads are returned to the same or better condition following construction should the Project be approved.
Fire risk	Bushfire risk was one of the most frequently raised concerns, with worries that the materials used in the solar panels, the battery and the scale of the development could increase the risk of bushfires in the region	The EIS includes a Bushfire Assessment and Preliminary Hazard Assessment, and the following measures have been outlined to reduce risk of fire spreading to or from the site: Asset Protection Zones, managed vegetation, emergency access, firefighting resources, and BESS fire prevention systems. Post-approval studies (e.g. Fire Safety Study, Emergency Response Plan) will be

Topic**What We Heard****How It's Assessed**

developed with Fire & Rescue NSW
should the Project be approved.

Important social topics

Alongside environmental studies, many community members raised important social concerns.

Mental health & wellbeing

We recognise that large-scale projects can bring uncertainty and stress. We take community feedback seriously and recognise that mental health is an important part of a resilient and connected community. It is important to us that we consider not only environmental and economic factors, and studies that have been undertaken have also looked into social and psychological impacts that may arise. We hope information provided within the EIS may ease some concerns on certain topics that have been raised.

We also encourage everyone to look after themselves and check in with friends and neighbours. Support is available if needed:

- **Lifeline:** 13 11 14 (24/7)
 - **Beyond Blue:** 1300 224 636 (24/7)
-

Property Values

We've heard strong concerns about whether the Project might affect local property values. While large-scale solar and battery projects are still relatively new in Australia, independent research by the [Clean Energy Council of Australia](#) shows that property prices have often risen in regions hosting renewable projects—by 35–51% over five years, alongside local economic growth.

Our assessments for the Project found that impacts such as noise and visual change are low to medium and can be managed effectively. While property values are not a formal planning consideration, we remain committed to minimising impacts and protecting the liveability of the area.

Insurance

Some community members asked whether insurance premiums might rise due to the Project. While insurance providers apply their own risk assessment and pricing models, the EIS demonstrates that the risks associated with this Project are clearly understood and can be effectively mitigated with a high degree of confidence.

Importantly, the Insurance Council of Australia has stated that they are “*not aware of any instances where Insurance Council members have been unable to provide insurance or have increased premiums as a result of a farm (or a neighbouring property) hosting energy infrastructure.*”

For more information, we encourage you to refer to the [Insurance Council of Australia’s statement](#) regarding farm insurance and energy infrastructure.

Community Benefits

We are working with Council and the community to design a Community Benefit Sharing program that will deliver lasting benefits for the region. Our aim is to ensure that the advantages of hosting the Merino Solar Farm extend beyond jobs and services during construction and continue to support the community well into the future.

This program is not compensation—it is a formal requirement for State Significant Developments in NSW. Community feedback, insights from the Social Impact Assessment and recommendations from agencies are all helping to shape the program. We’ve also heard concerns about fairness and transparency.

To address this, part of the fund will go directly to those most affected by the Project. Where these offers are not accepted, the funds will revert to Council to administer for the wider community.

Stay Connected

If you have any further questions, please don’t hesitate to contact us using the methods listed below and a member of our team will be in touch.

Website: [EDPR Merino Solar Farm](#)

Email: merino@edp.com

Phone: 1300 551 715

**Appendix E.18 Online Community
Survey**



Merino Solar Farm - EIS Survey

Share your thoughts on the Merino Solar Farm proposal Community Survey

EDP Renewables (EDPR) Australia are seeking development approval for a 450 MW solar farm and battery energy storage system (BESS) located approximately 6km south of Goulburn.

This survey aims to help us gain a better understanding of community values, benefits and opportunities, and perceptions about the proposed Merino Solar Farm. Your responses will help to inform the Social Impact Assessment (SIA) as part of the proposed project's broader Environmental Impact Statement (EIS). All survey information is stored securely and survey responses in the SIA Report will remain anonymous.

If you provide contact details, they will only be used to engage with you about this Project. For any questions, please email us at merino@edp.com or visit the project website [here](#).

The survey has 20 questions and will take 5-10 minutes to complete. It closes 4:00 PM, Friday 14 March 2025.

Thank you for your feedback and for completing the survey.



Merino Solar Farm - EIS Survey

About you

* Gender identification

- Female
- Male
- Gender neutral
- Prefer not to say

* Age

- Under 19
- 20-24
- 25-34
- 35-44
- 45-54
- 55-64
- 65-74
- 75-84
- 85 and over

* Where best describes where you live?

- Less than 1km from the proposed project site
- 1km - 5km from the proposed project site
- 5km - 10km from the proposed project site
- More than 10km from the proposed project site but still within the Goulburn Shire
- I don't live here but I own land/property
- I don't live here but visit the area for recreation
- I don't live here but visit the area for work
- Other (please specify)

* What is your highest level of education?

- Did not go to school
- Year 8 or below
- Year 9 or equivalent
- Year 10 or equivalent
- Year 11 or equivalent
- Year 12 or equivalent
- TAFE / Vocational education and training (VET)
- University



* In what way are you involved in the Goulburn community? Choose all that apply.

- I live here
- I attend school or work locally
- I am a member of a local club or community organisation
- I am involved in agriculture
- I am involved in the TAFE
- I am involved in tourism
- I am a near neighbour to the proposed project
- I own a business
- I work for an agency/organisation that is focused on this area
- I am not involved in the community
- Other (please specify)

What do you value most about the local area? Choose all that apply

- Cultural heritage
- Community/family ties
- Community safety and resilience
- Historic values
- Landscape and views
- Health and wellbeing
- Natural values, including biodiversity, ecosystems, etc.
- Recreation opportunities including hiking, fishing, nature based, etc.
- Work opportunities
- Other (please specify)

Please describe the attributes you are most proud of within your local community.

* What, if any, do you see as the major challenges that the Goulburn community is currently facing?



Merino Solar Farm - EIS Survey

The Project

* Please rate your overall level of support for the proposed Project.

- Strongly oppose
- Oppose
- Somewhat oppose
- Neutral
- Somewhat support
- Support
- Strongly support
- Undecided/I don't know enough about it

What are the main reasons you're interested in the proposed project? Choose all that apply.

- I have a business and I would like to seek potential work or business opportunities with the project
- The proximity to my residence
- The potential adverse impacts on the local area
- I want to build my understanding of the project
- Other (please specify)



Merino Solar Farm - EIS Survey

Visual amenity

* What landscape characteristics in the local area are important to you? What makes them important? [best lookouts/public viewing locations].

* Please rate the scenic value of the following landscape features:

	Low	Moderate	High	Not applicable
Grazing land	<input type="radio"/>	<input type="radio"/>	<input type="radio"/>	<input type="radio"/>
Cropped farmland	<input type="radio"/>	<input type="radio"/>	<input type="radio"/>	<input type="radio"/>
Bushland areas	<input type="radio"/>	<input type="radio"/>	<input type="radio"/>	<input type="radio"/>
Rivers/creeks	<input type="radio"/>	<input type="radio"/>	<input type="radio"/>	<input type="radio"/>
Vegetation	<input type="radio"/>	<input type="radio"/>	<input type="radio"/>	<input type="radio"/>
Hills	<input type="radio"/>	<input type="radio"/>	<input type="radio"/>	<input type="radio"/>
Ridgelines	<input type="radio"/>	<input type="radio"/>	<input type="radio"/>	<input type="radio"/>
Goulburn township	<input type="radio"/>	<input type="radio"/>	<input type="radio"/>	<input type="radio"/>



Merino Solar Farm - EIS Survey

Important factors

* What **concerns** do you have (if any) about the proposed Merino Solar Farm?

	Very concerned	Concerned	Neutral	Not concerned
Potential for visual impacts for near neighbours	<input type="radio"/>	<input type="radio"/>	<input type="radio"/>	<input type="radio"/>
Potential for noise impacts for near neighbours	<input type="radio"/>	<input type="radio"/>	<input type="radio"/>	<input type="radio"/>
Transportation planning and the use of local roads	<input type="radio"/>	<input type="radio"/>	<input type="radio"/>	<input type="radio"/>
Temporary construction impacts (i.e., noise, traffic, dust)	<input type="radio"/>	<input type="radio"/>	<input type="radio"/>	<input type="radio"/>
Temporary construction workforce impacts (i.e., local housing/accommodation, services)	<input type="radio"/>	<input type="radio"/>	<input type="radio"/>	<input type="radio"/>
Temporary construction workforce impacts on services (health and other facilities)	<input type="radio"/>	<input type="radio"/>	<input type="radio"/>	<input type="radio"/>
Effects on agricultural land use within the region	<input type="radio"/>	<input type="radio"/>	<input type="radio"/>	<input type="radio"/>
Perceived effects on land values	<input type="radio"/>	<input type="radio"/>	<input type="radio"/>	<input type="radio"/>
Effects on natural areas or habitats	<input type="radio"/>	<input type="radio"/>	<input type="radio"/>	<input type="radio"/>
Perceived effects on insurance rates	<input type="radio"/>	<input type="radio"/>	<input type="radio"/>	<input type="radio"/>
Fire management practices	<input type="radio"/>	<input type="radio"/>	<input type="radio"/>	<input type="radio"/>
Potential for impacts to waterways	<input type="radio"/>	<input type="radio"/>	<input type="radio"/>	<input type="radio"/>
Potential for impacts cultural heritage	<input type="radio"/>	<input type="radio"/>	<input type="radio"/>	<input type="radio"/>
Size and scale	<input type="radio"/>	<input type="radio"/>	<input type="radio"/>	<input type="radio"/>
Waste	<input type="radio"/>	<input type="radio"/>	<input type="radio"/>	<input type="radio"/>

Other (please specify)

* Please identify your level of importance in terms of **social and economic** considerations

	Not important	Somewhat important	Important	Very important
Potential for diversification of land use/income streams	<input type="radio"/>	<input type="radio"/>	<input type="radio"/>	<input type="radio"/>
Securing employment or business from the project	<input type="radio"/>	<input type="radio"/>	<input type="radio"/>	<input type="radio"/>
Potential impacts to property values	<input type="radio"/>	<input type="radio"/>	<input type="radio"/>	<input type="radio"/>
Cultural heritage	<input type="radio"/>	<input type="radio"/>	<input type="radio"/>	<input type="radio"/>
Engagement with near neighbours	<input type="radio"/>	<input type="radio"/>	<input type="radio"/>	<input type="radio"/>
Disruption to community cohesion	<input type="radio"/>	<input type="radio"/>	<input type="radio"/>	<input type="radio"/>
Reduction of greenhouse gas emissions & help to combat climate change	<input type="radio"/>	<input type="radio"/>	<input type="radio"/>	<input type="radio"/>
Community benefit opportunities from the project	<input type="radio"/>	<input type="radio"/>	<input type="radio"/>	<input type="radio"/>

Other (please specify)



Merino Solar Farm - EIS Survey

Decision making process

* In terms of the potential for the Merino Solar Farm to contribute to community development, what types of projects or improvements do you think they could support?
[Also suggest ways to manage]

Thinking about the company, EDPR Australia and the proposed Project, please indicate your agreement with the following statements.

	Strongly disagree	Disagree	Slightly disagree	Not sure	Slightly agree	Agree	Strongly agree
People in my community will have opportunities to participate in the decision-making process.	<input type="radio"/>	<input type="radio"/>	<input type="radio"/>	<input type="radio"/>	<input type="radio"/>	<input type="radio"/>	<input type="radio"/>
The EDPR Australia project team will be interested in knowing what I think about the proposed project.	<input type="radio"/>	<input type="radio"/>	<input type="radio"/>	<input type="radio"/>	<input type="radio"/>	<input type="radio"/>	<input type="radio"/>
I think the EDPR Australia project team will listen to and respect my opinions.	<input type="radio"/>	<input type="radio"/>	<input type="radio"/>	<input type="radio"/>	<input type="radio"/>	<input type="radio"/>	<input type="radio"/>

In your opinion, what would good community engagement in this community look like?



Merino Solar Farm - EIS Survey

How would you like the EDPR Australia project team to engage with you going forward?

- Follow up phone call
- I would like a meeting at my residence
- I would like to subscribe to email updates
- I would like a regular newsletter in the post
- I will visit the website if I need extra information
- No further contact necessary
- Other (please specify)

Contact details

Name

**Organisation name
(if applicable)**

Address

Postcode

Email Address

Phone Number

Is there anything else that you would like to tell us or feel that is important to say?