

# Peak Apartments

Position: P1A

Level: 20

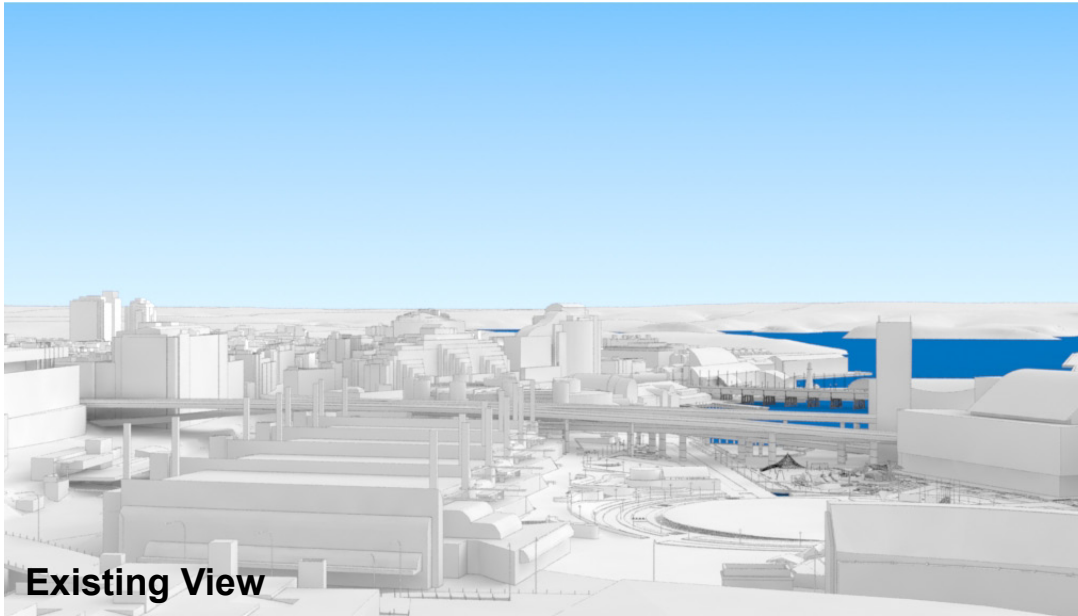
RL: 69.725 (Camera Height)

FOR INFORMATION ONLY

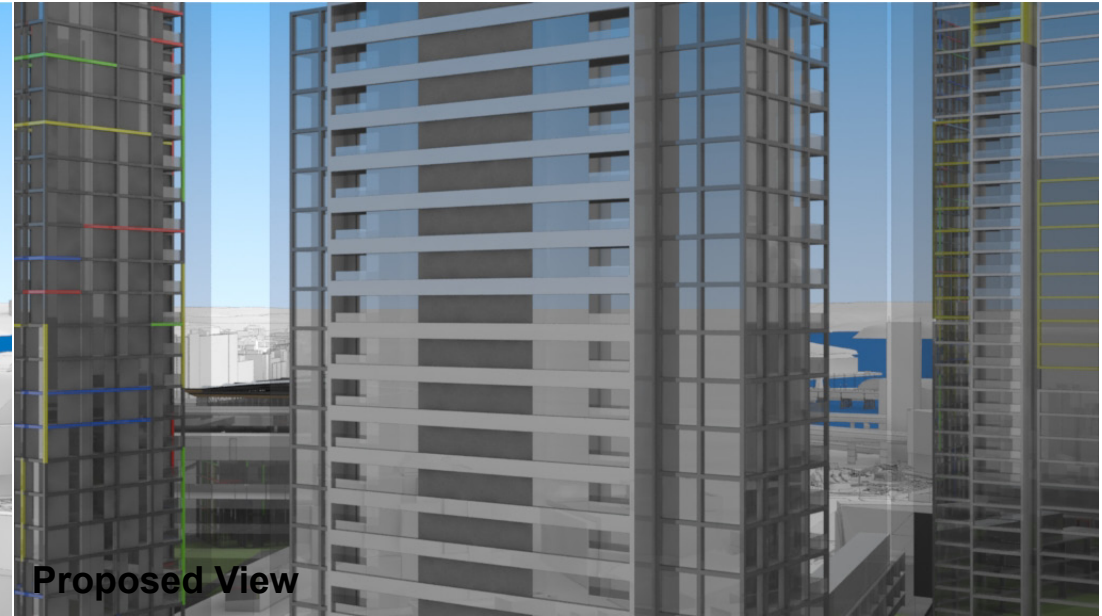
The Hotel shown in these images does not form part of this development application (and will be the subject of a separate development assessment process) and is included for information and broader illustrative purposes. Illustrative designs of built forms in the Haymarket precinct do not form part of this development application (and will be the subject of separate development assessment processes) and is shown for information and broader illustrative purposes. These images are produced here for view analysis purposes only.

**LEGEND:** 62

- Key Building
- View Direction (50mm Camera)
- Hotel (subject of a future separate DA.)
- Building envelope in the Haymarket Precinct (Subject of this DA)



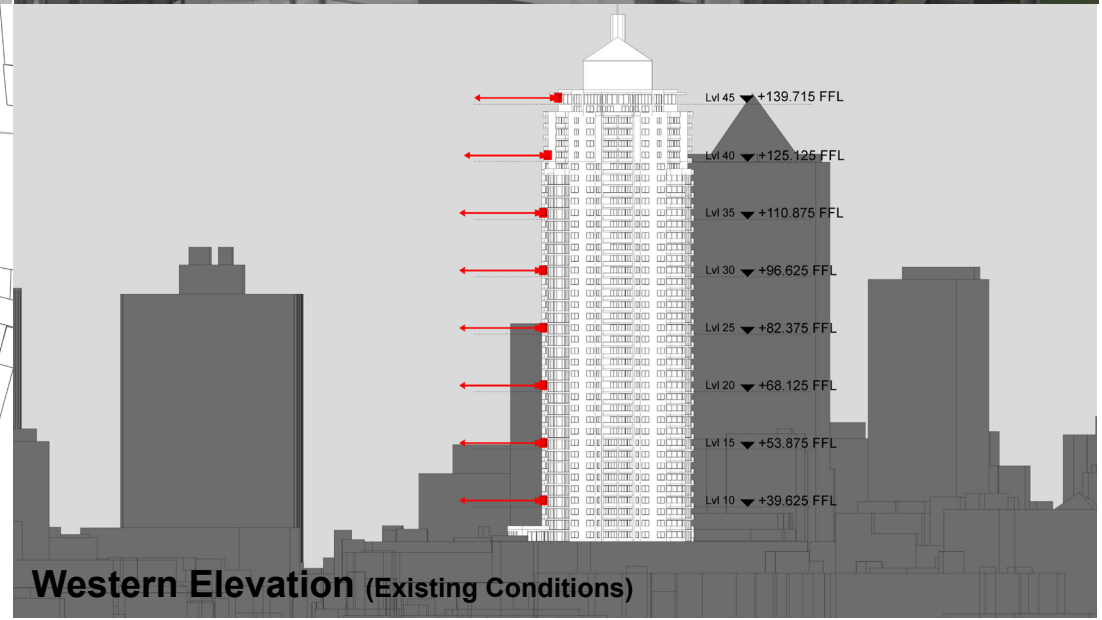
Existing View



Proposed View



Plan (Existing Conditions)



Western Elevation (Existing Conditions)

# Peak Apartments

Position: P1A

Level: 15

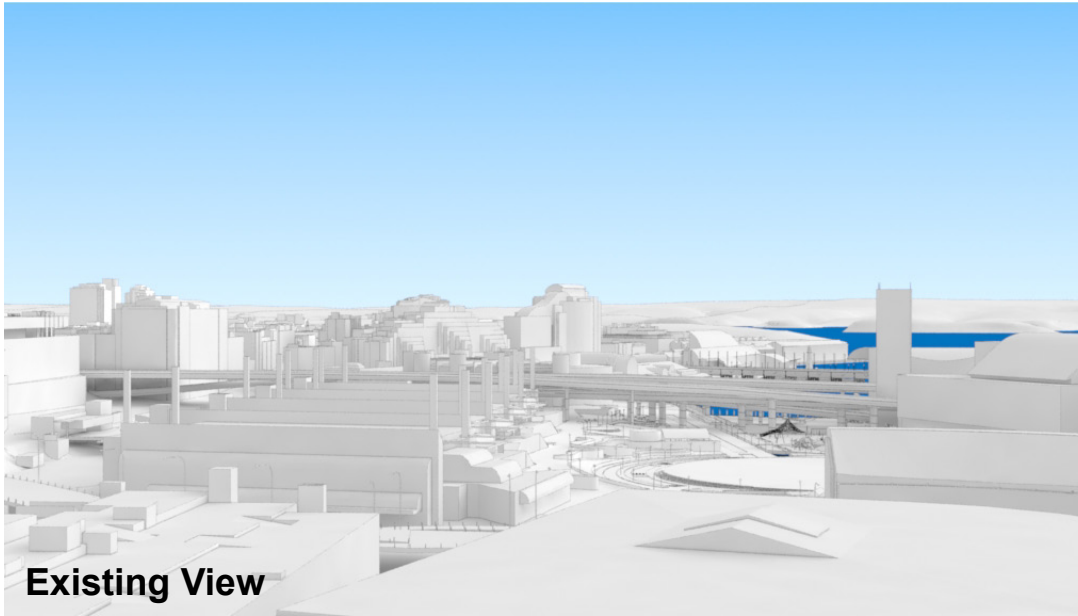
RL: 55.475 (Camera Height)

FOR INFORMATION ONLY

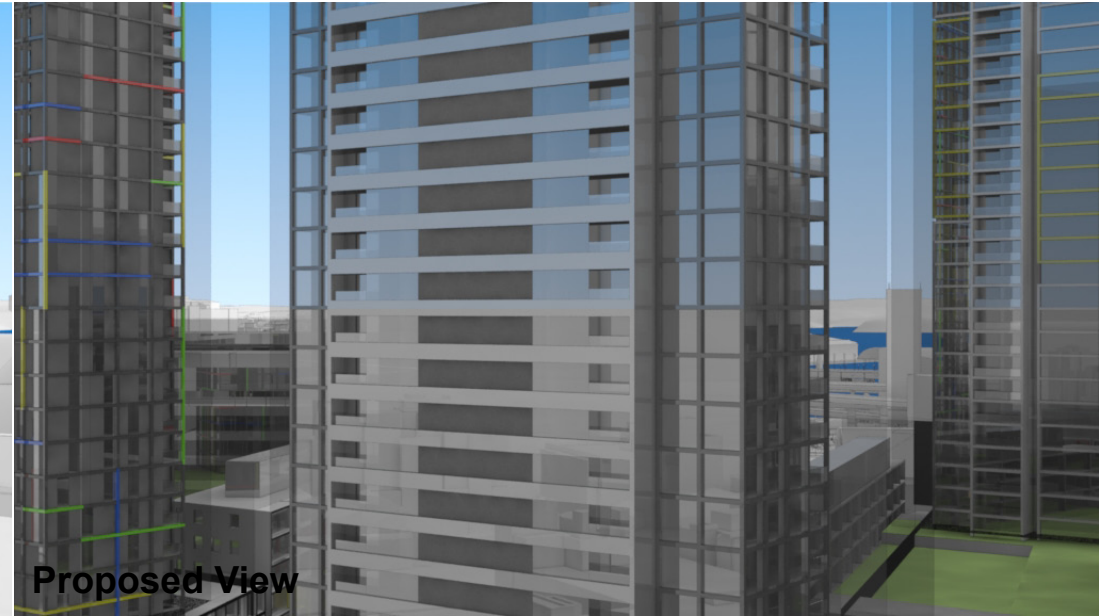
The Hotel shown in these images does not form part of this development application (and will be the subject of a separate development assessment process) and is included for information and broader illustrative purposes. Illustrative designs of built forms in the Haymarket precinct do not form part of this development application (and will be the subject of separate development assessment processes) and is shown for information and broader illustrative purposes. These images are produced here for view analysis purposes only.

**LEGEND:** 63

- Key Building
- View Direction (50mm Camera)
- Hotel (subject of a future separate DA.)
- Building envelope in the Haymarket Precinct (Subject of this DA)



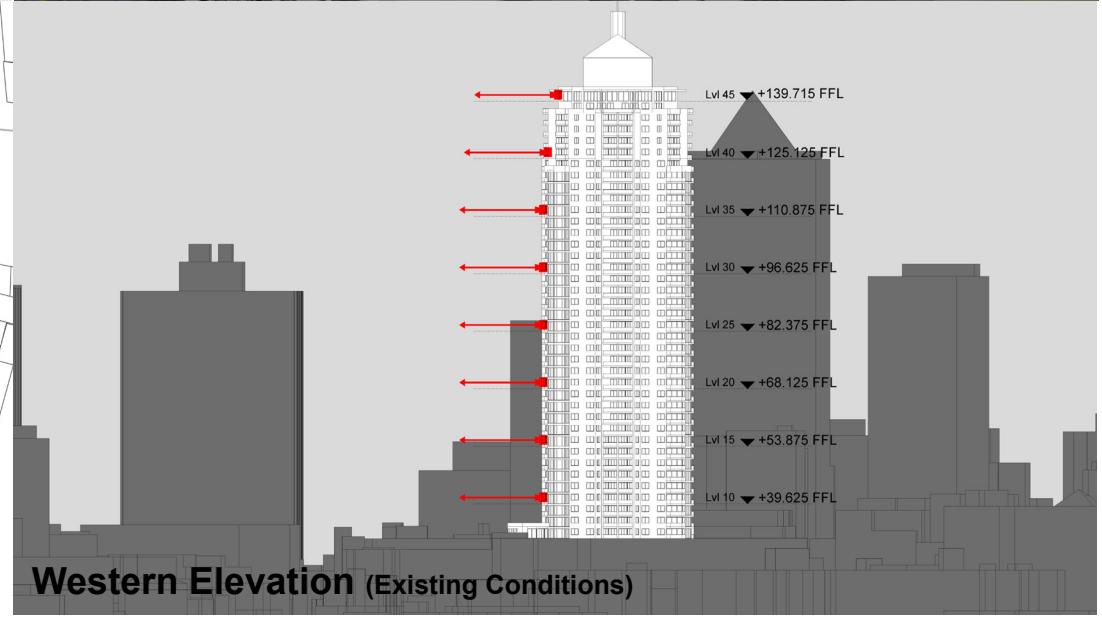
Existing View



Proposed View



Plan (Existing Conditions)



Western Elevation (Existing Conditions)

# Peak Apartments

Position: P1A

Level: 10

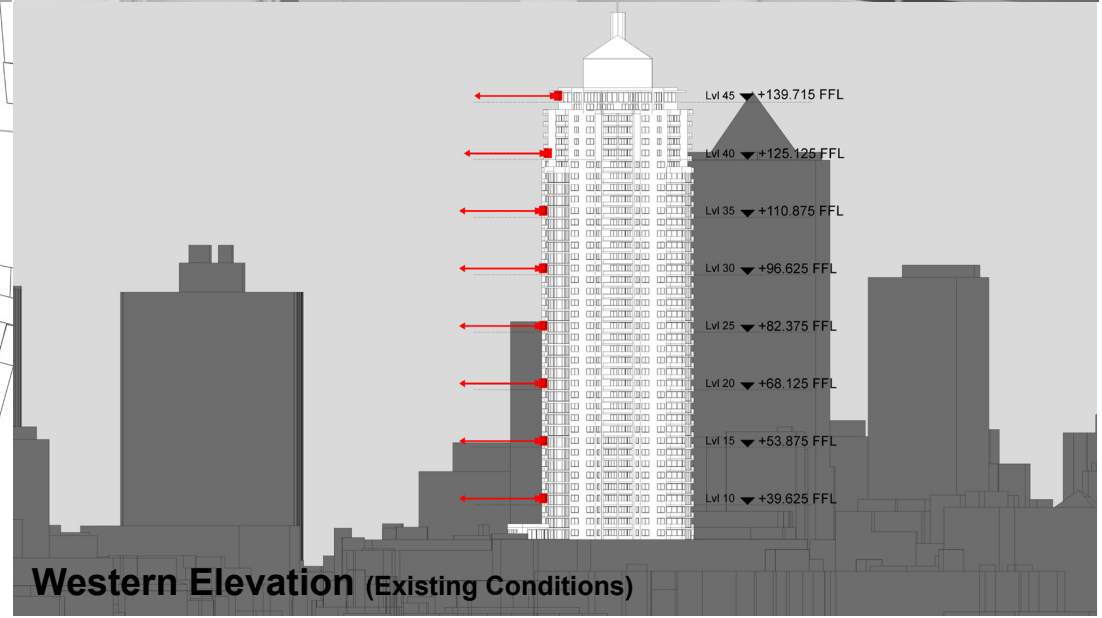
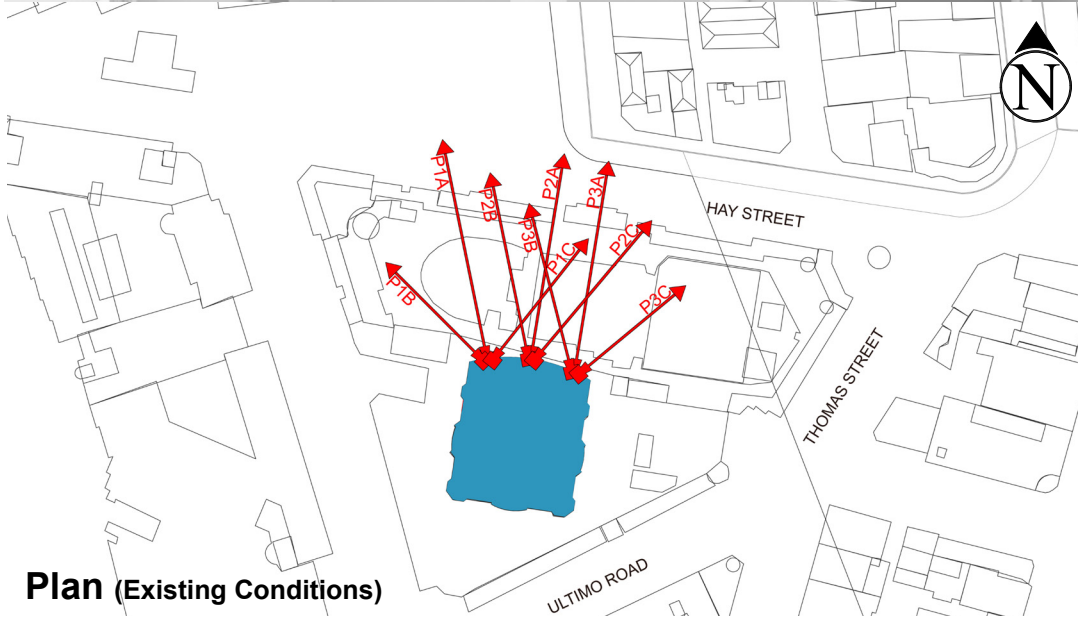
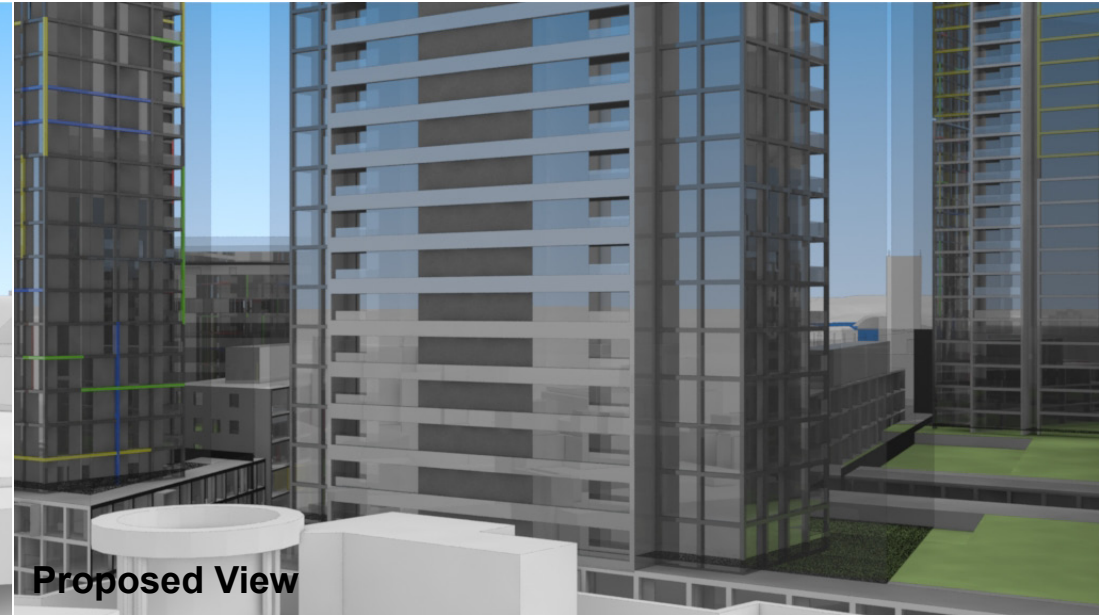
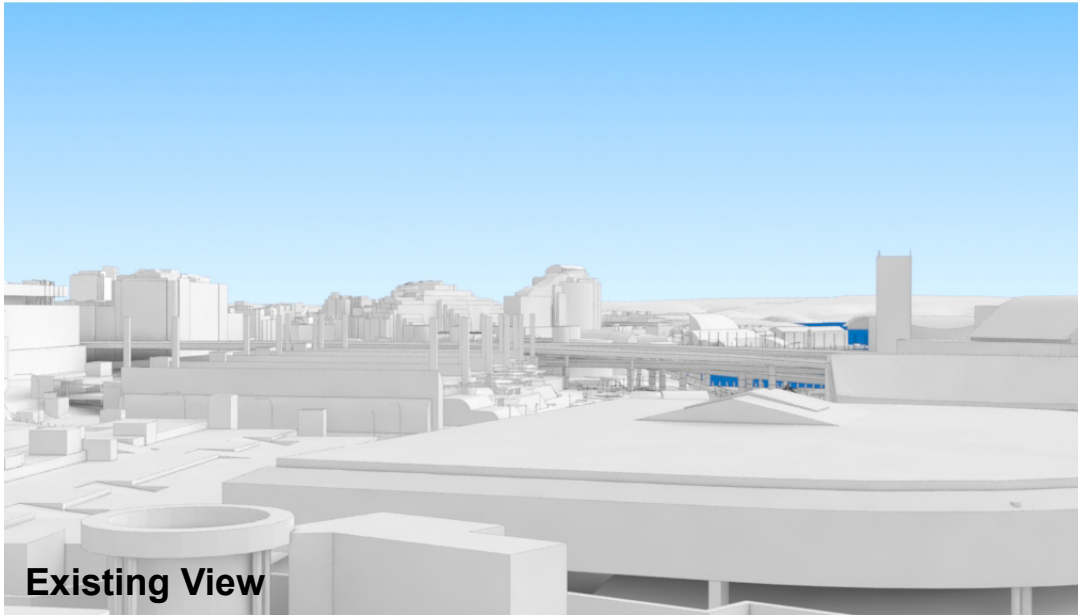
RL: 41.225 (Camera Height)

FOR INFORMATION ONLY

The Hotel shown in these images does not form part of this development application (and will be the subject of a separate development assessment process) and is included for information and broader illustrative purposes. Illustrative designs of built forms in the Haymarket precinct do not form part of this development application (and will be the subject of separate development assessment processes) and is shown for information and broader illustrative purposes. These images are produced here for view analysis purposes only.

**LEGEND:** 64

- Key Building
- View Direction (50mm Camera)
- Hotel (subject of a future separate DA.)
- Building envelope in the Haymarket Precinct (Subject of this DA)



# Peak Apartments

Position: P2B

Level: 45

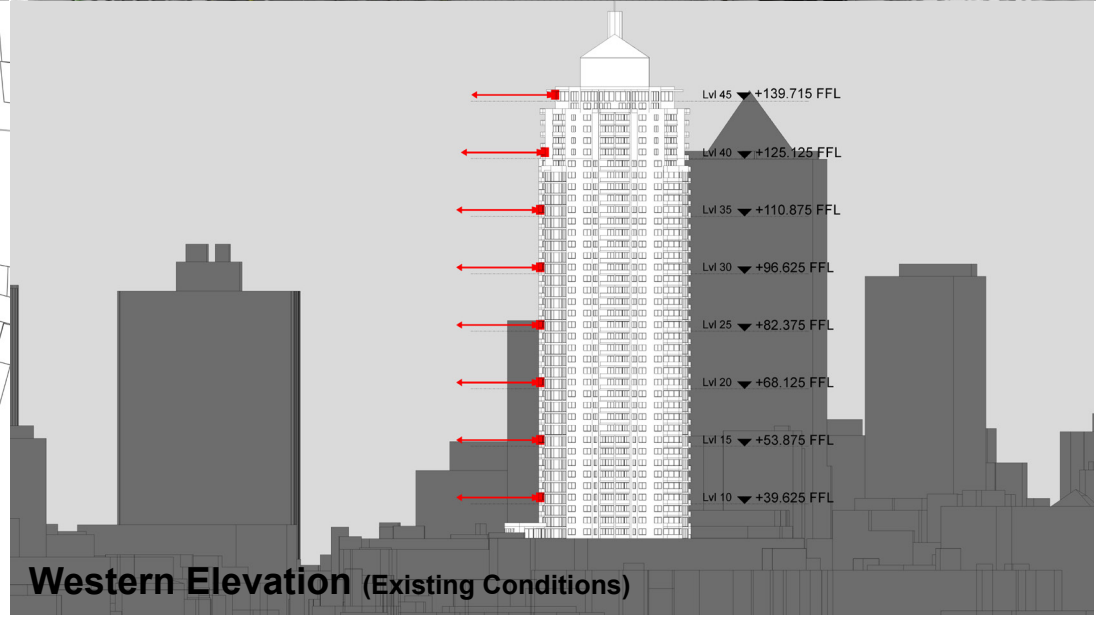
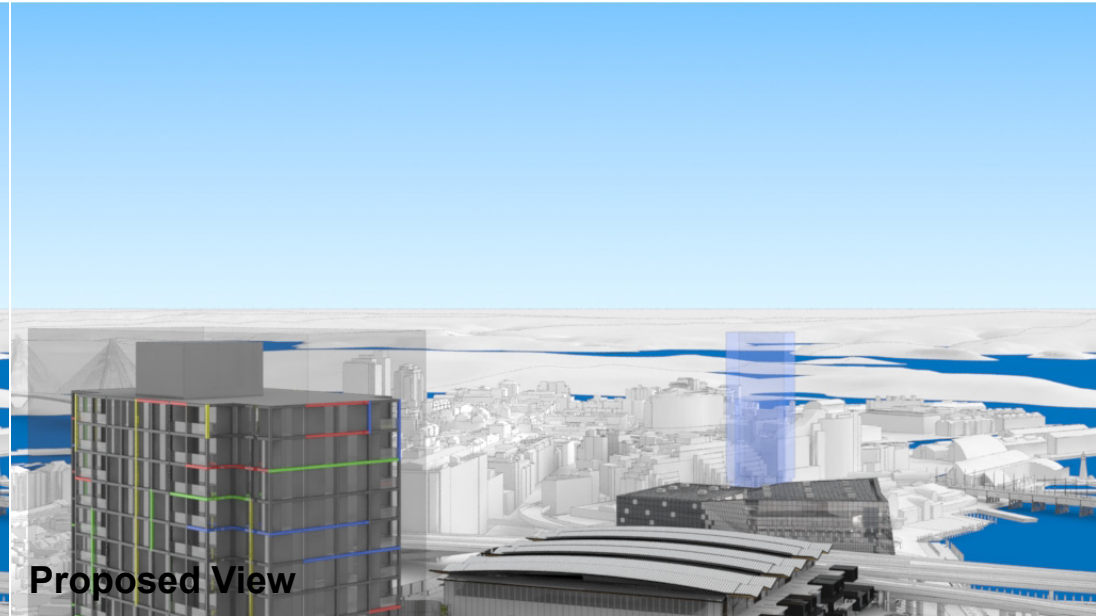
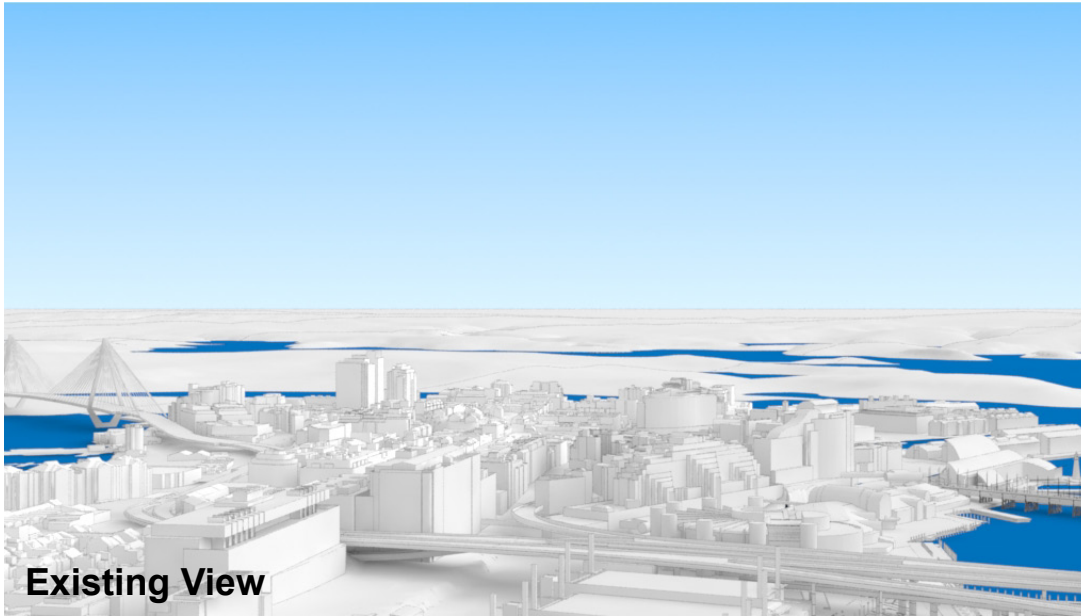
RL: 140.975 (Camera Height)

FOR INFORMATION ONLY

The Hotel shown in these images does not form part of this development application (and will be the subject of a separate development assessment process) and is included for information and broader illustrative purposes. Illustrative designs of built forms in the Haymarket precinct do not form part of this development application (and will be the subject of separate development assessment processes) and is shown for information and broader illustrative purposes. These images are produced here for view analysis purposes only.

**LEGEND:** 89

- Key Building
- View Direction (50mm Camera)
- Hotel (subject of a future separate DA.)
- Building envelope in the Haymarket Precinct (Subject of this DA)



# Peak Apartments






Position: P2B

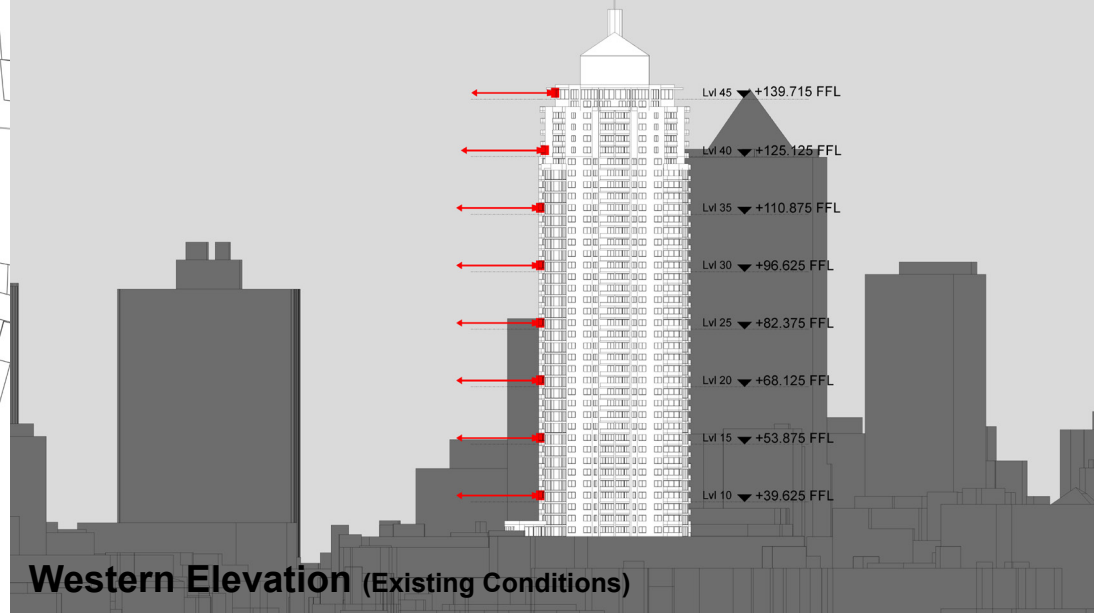
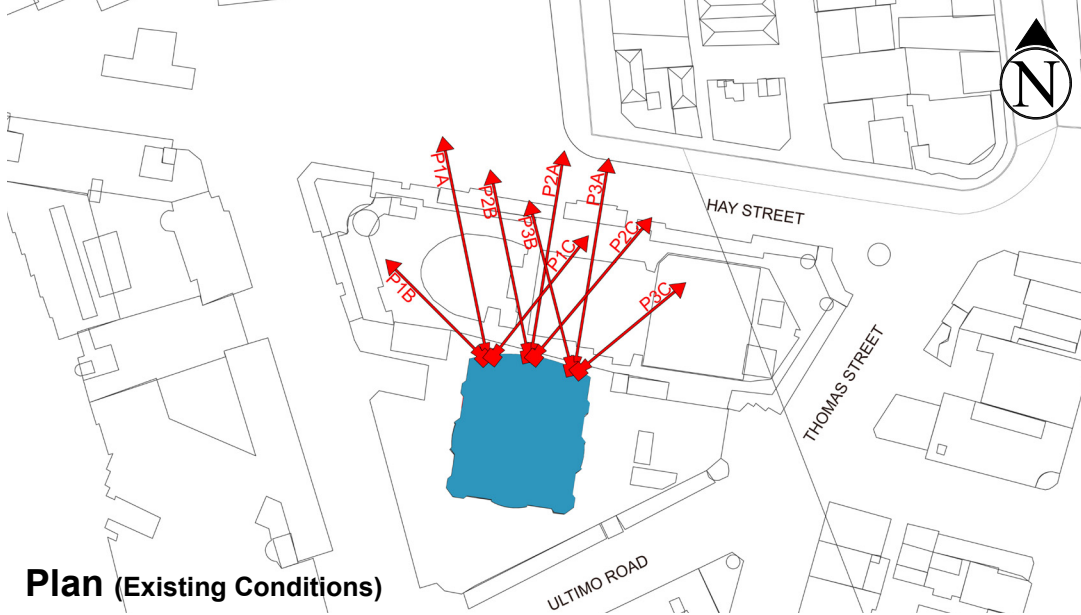
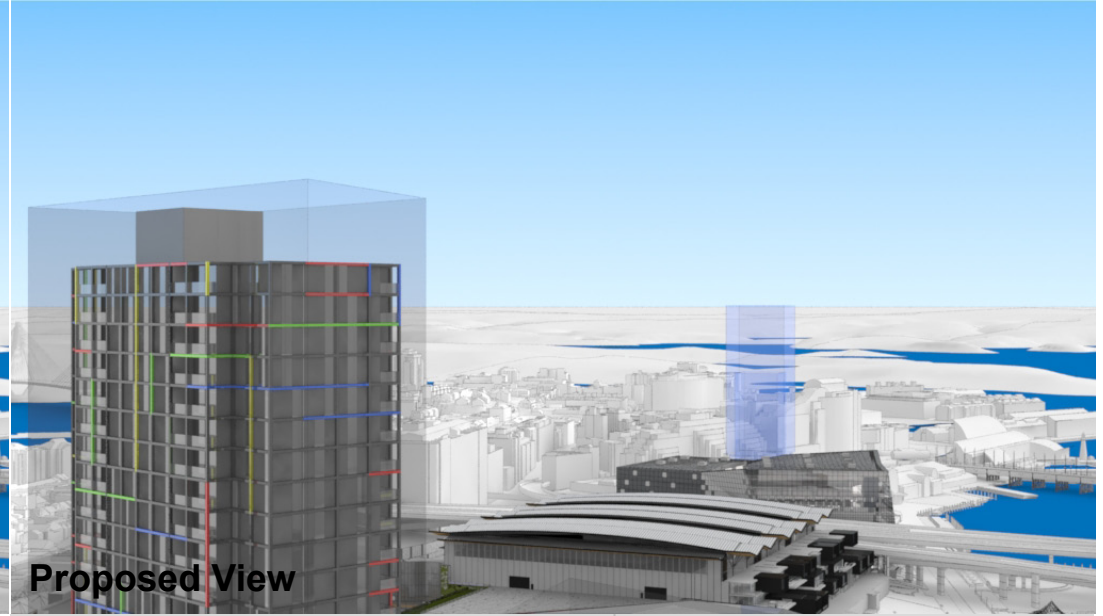
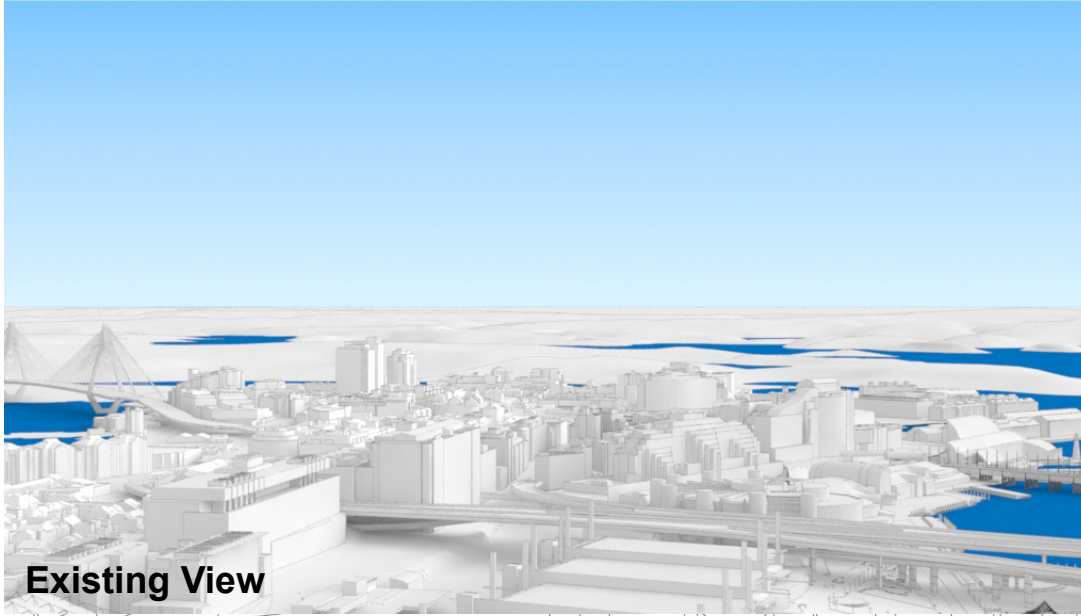
Level: 40

RL: 126.725 (Camera Height)

FOR INFORMATION ONLY

The Hotel shown in these images does not form part of this development application (and will be the subject of a separate development assessment process) and is included for information and broader illustrative purposes. Illustrative designs of built forms in the Haymarket precinct do not form part of this development application (and will be the subject of separate development assessment processes) and is shown for information and broader illustrative purposes. These images are produced here for view analysis purposes only.

	<b>LEGEND:</b>	90
	Key Building	
	View Direction (50mm Camera)	
	Hotel (subject of a future separate DA.)	
	Building envelope in the Haymarket Precinct (Subject of this DA)	



# Peak Apartments

Position: P2B

Level: 35

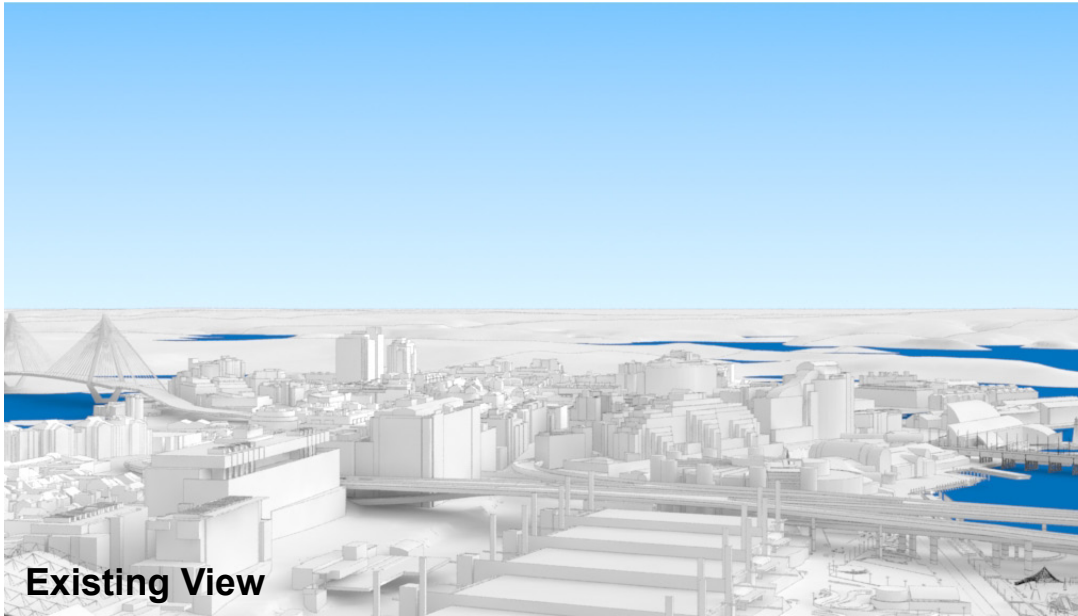
RL: 112.475 (Camera Height)

FOR INFORMATION ONLY

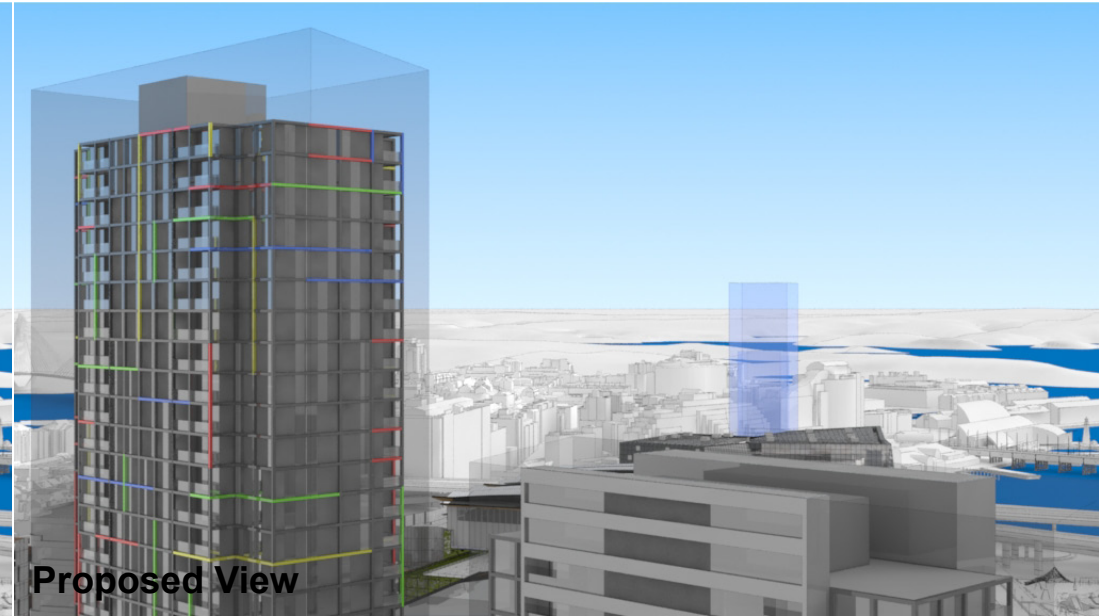
The Hotel shown in these images does not form part of this development application (and will be the subject of a separate development assessment process) and is included for information and broader illustrative purposes. Illustrative designs of built forms in the Haymarket precinct do not form part of this development application (and will be the subject of separate development assessment processes) and is shown for information and broader illustrative purposes. These images are produced here for view analysis purposes only.

**LEGEND:** 91

- Key Building
- View Direction (50mm Camera)
- Hotel (subject of a future separate DA.)
- Building envelope in the Haymarket Precinct (Subject of this DA)



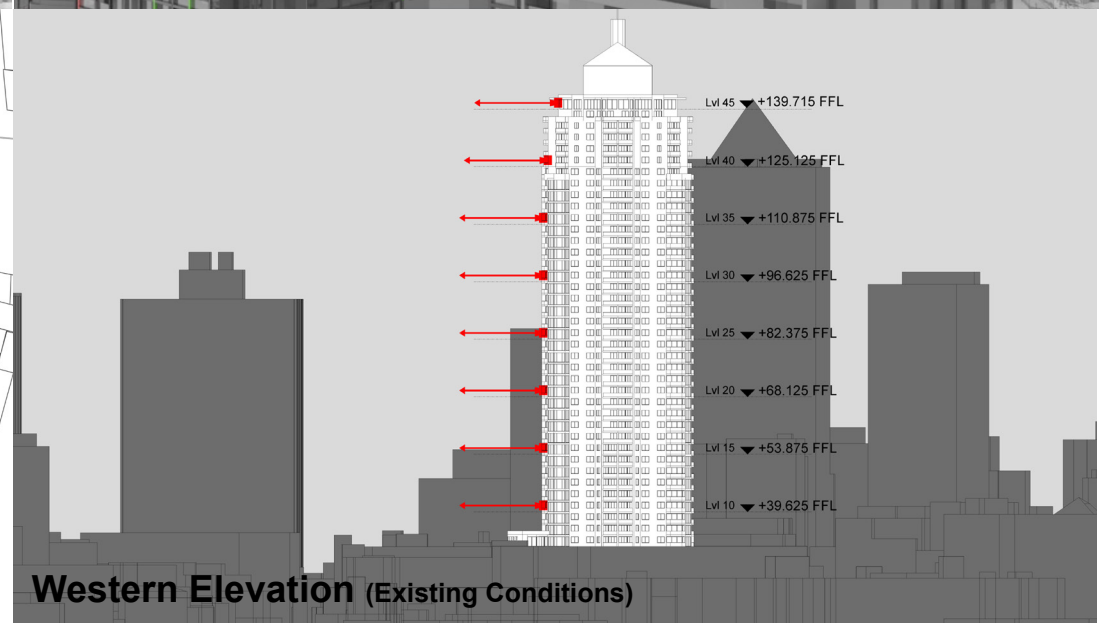
Existing View



Proposed View



Plan (Existing Conditions)



Western Elevation (Existing Conditions)

# Peak Apartments

Position: P2B

Level: 30

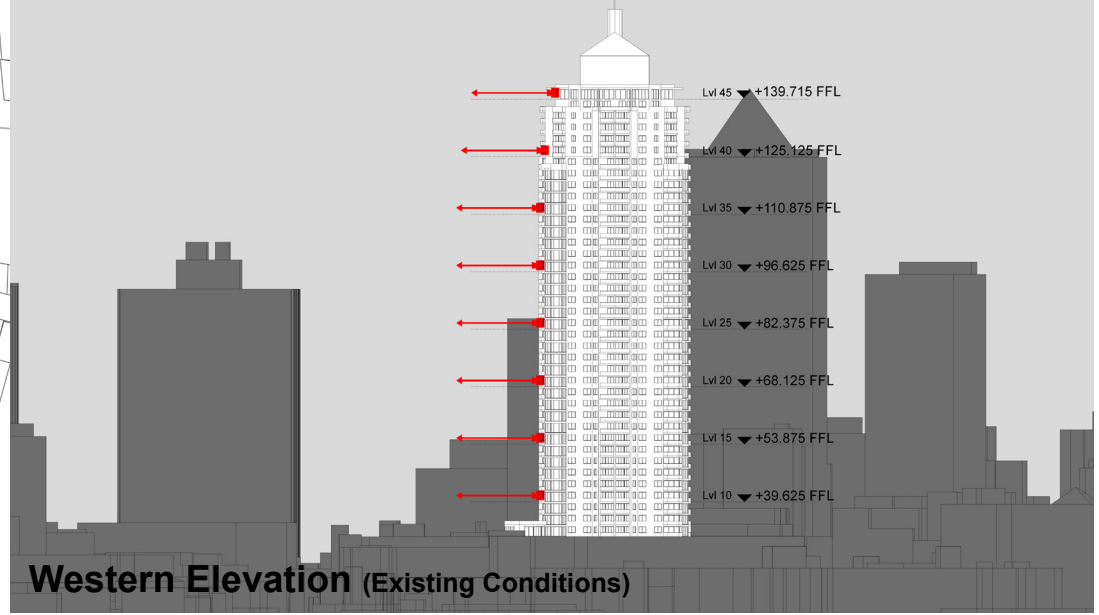
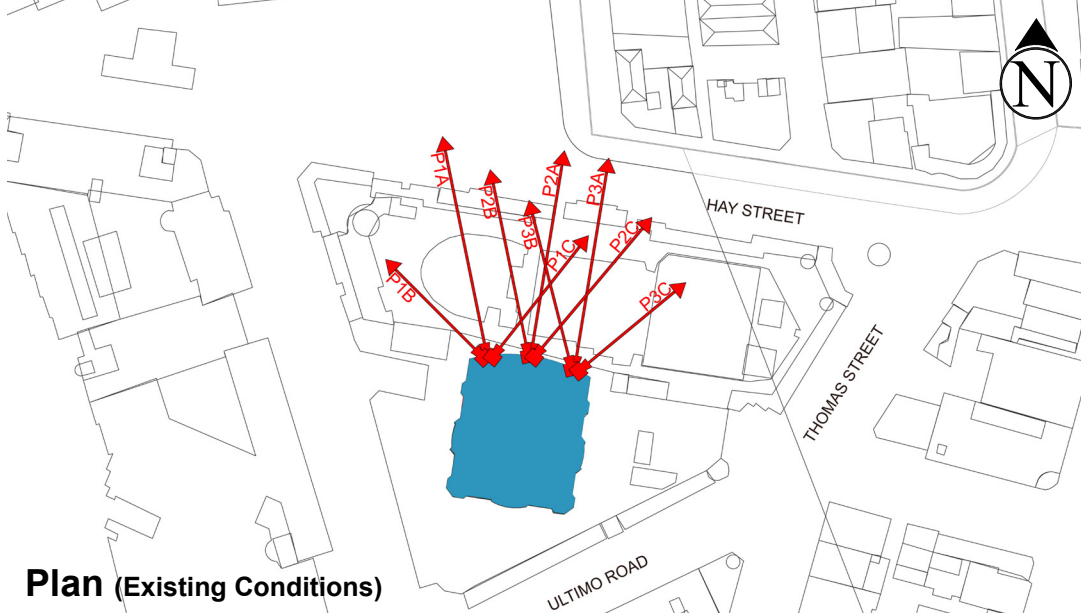
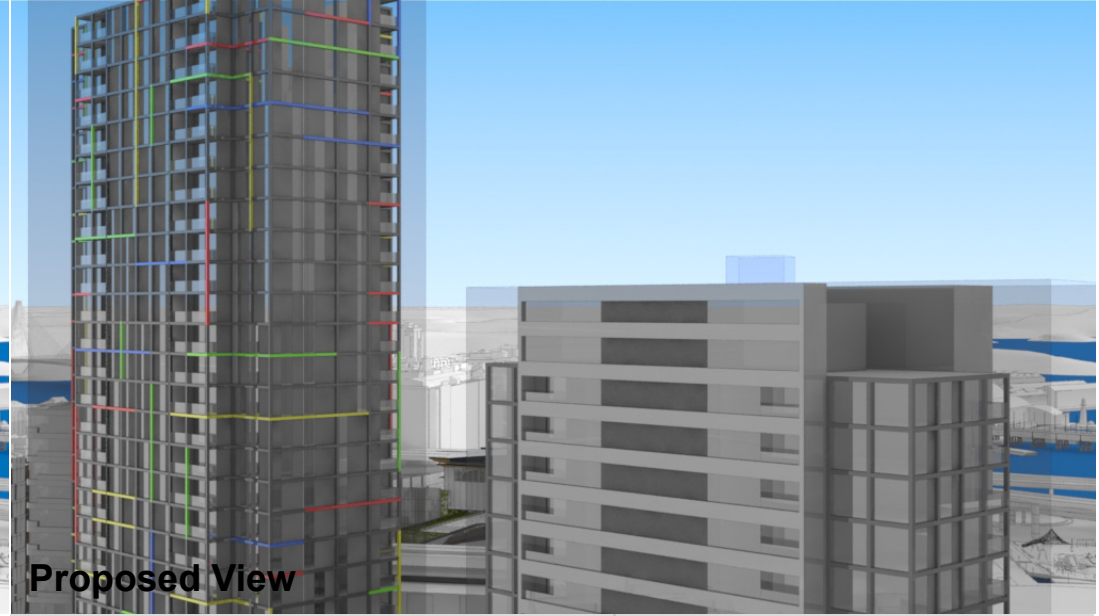
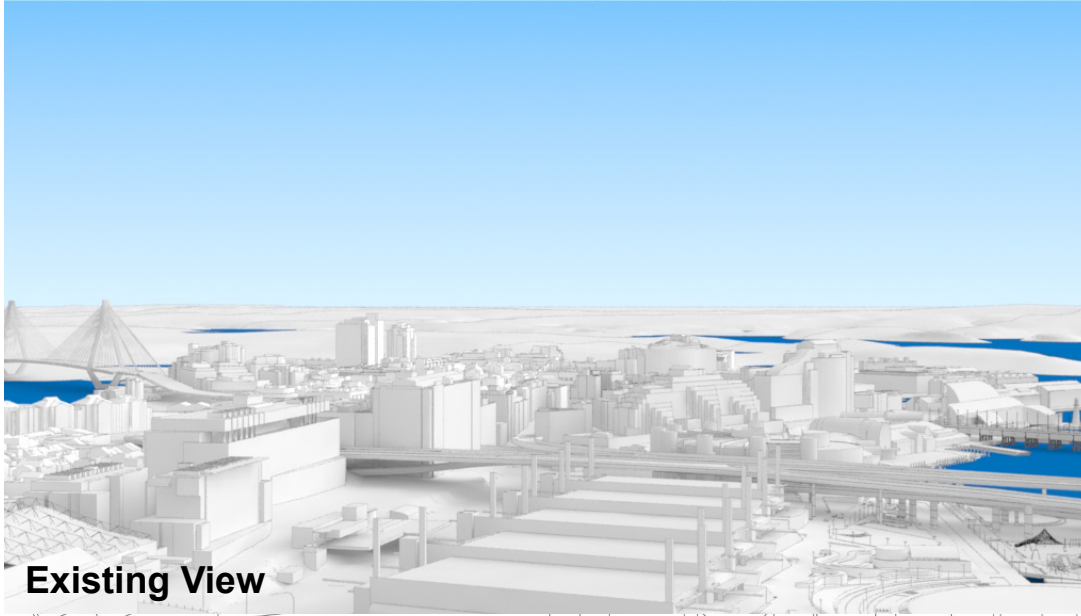
RL: 98.225 (Camera Height)

FOR INFORMATION ONLY

The Hotel shown in these images does not form part of this development application (and will be the subject of a separate development assessment process) and is included for information and broader illustrative purposes. Illustrative designs of built forms in the Haymarket precinct do not form part of this development application (and will be the subject of separate development assessment processes) and is shown for information and broader illustrative purposes. These images are produced here for view analysis purposes only.

**LEGEND:** 92

- Key Building
- View Direction (50mm Camera)
- Hotel (subject of a future separate DA.)
- Building envelope in the Haymarket Precinct (Subject of this DA)



# Peak Apartments

Position: P2B

Level: 25

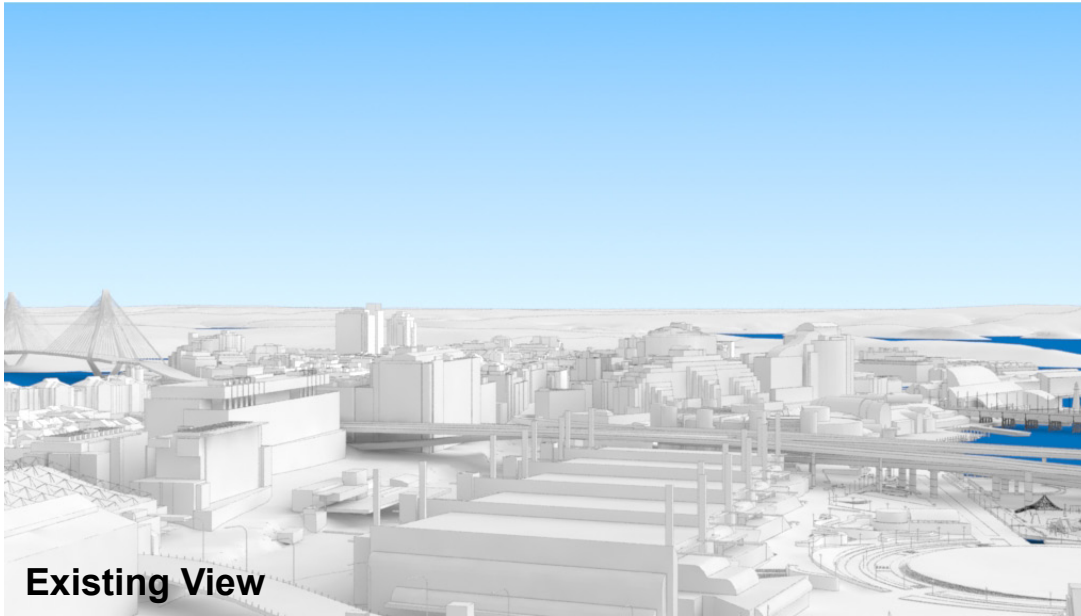
RL: 83.975 (Camera Height)

FOR INFORMATION ONLY

The Hotel shown in these images does not form part of this development application (and will be the subject of a separate development assessment process) and is included for information and broader illustrative purposes. Illustrative designs of built forms in the Haymarket precinct do not form part of this development application (and will be the subject of separate development assessment processes) and is shown for information and broader illustrative purposes. These images are produced here for view analysis purposes only.

**LEGEND:** 93

- Key Building
- View Direction (50mm Camera)
- Hotel (subject of a future separate DA.)
- Building envelope in the Haymarket Precinct (Subject of this DA)



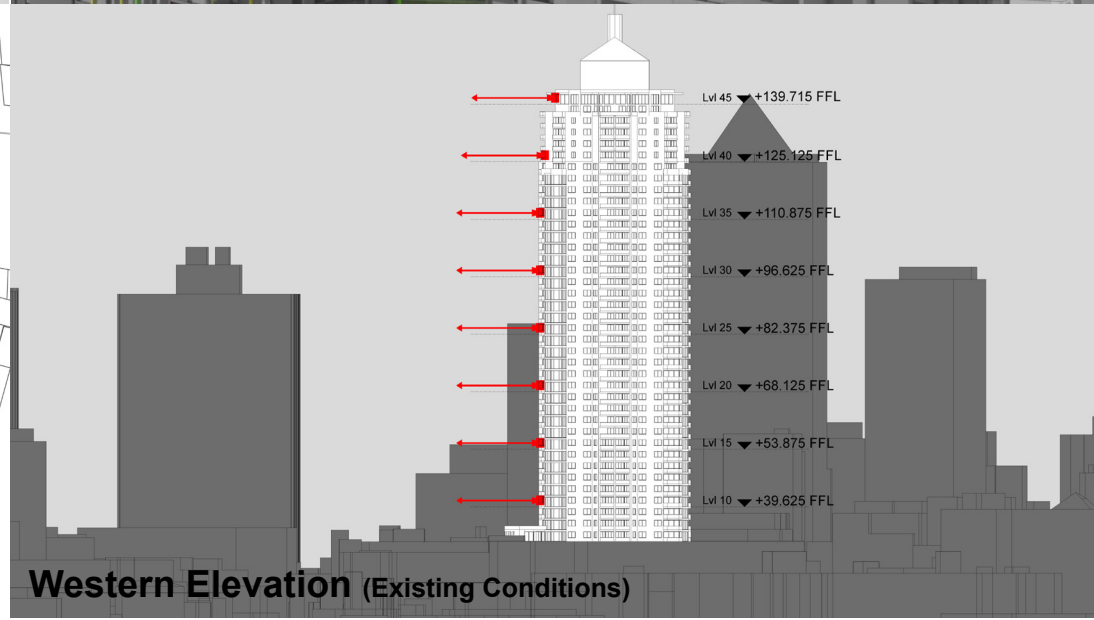
Existing View



Proposed View



Plan (Existing Conditions)



Western Elevation (Existing Conditions)

# Peak Apartments

Position: P2B

Level: 20

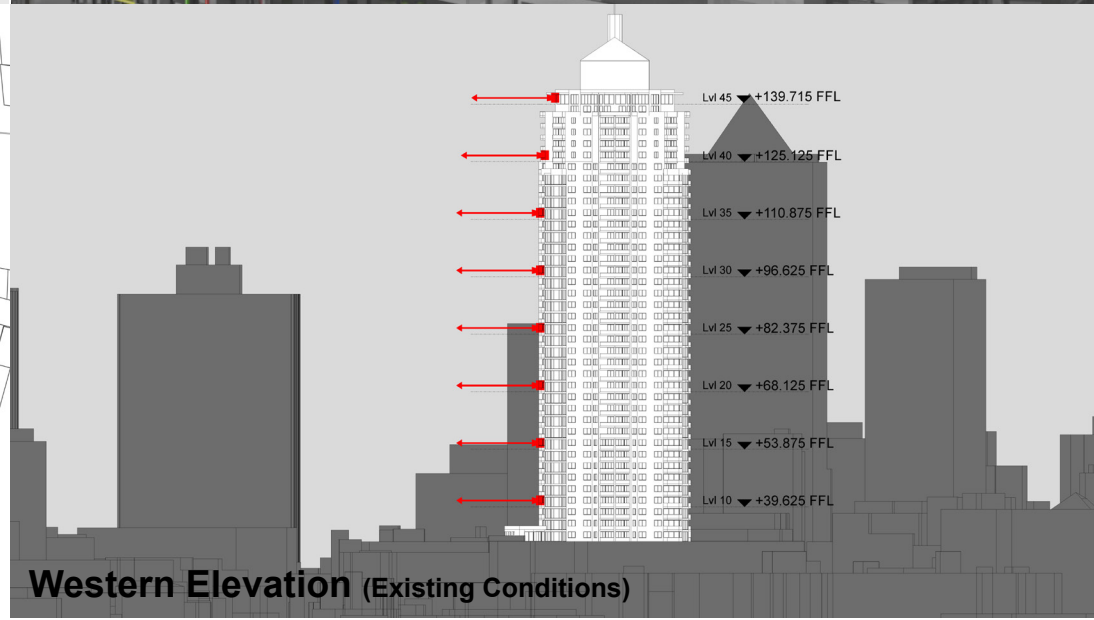
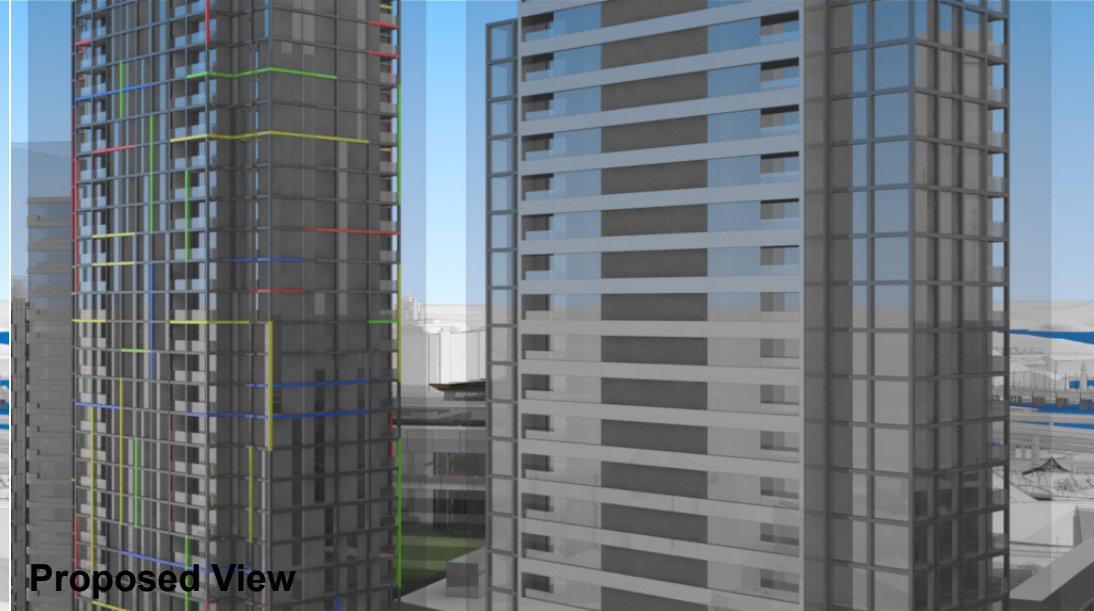
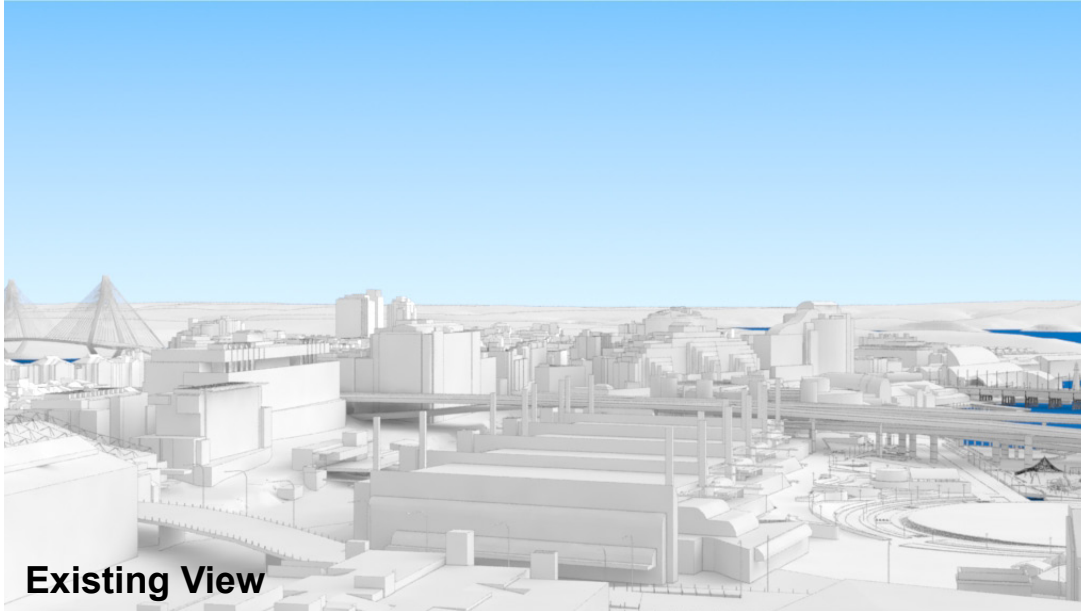
RL: 69.725 (Camera Height)

FOR INFORMATION ONLY

The Hotel shown in these images does not form part of this development application (and will be the subject of a separate development assessment process) and is included for information and broader illustrative purposes. Illustrative designs of built forms in the Haymarket precinct do not form part of this development application (and will be the subject of separate development assessment processes) and is shown for information and broader illustrative purposes. These images are produced here for view analysis purposes only.

**LEGEND:** 94

- Key Building
- View Direction (50mm Camera)
- Hotel (subject of a future separate DA.)
- Building envelope in the Haymarket Precinct (Subject of this DA)



# Peak Apartments

Position: P2B

Level: 15

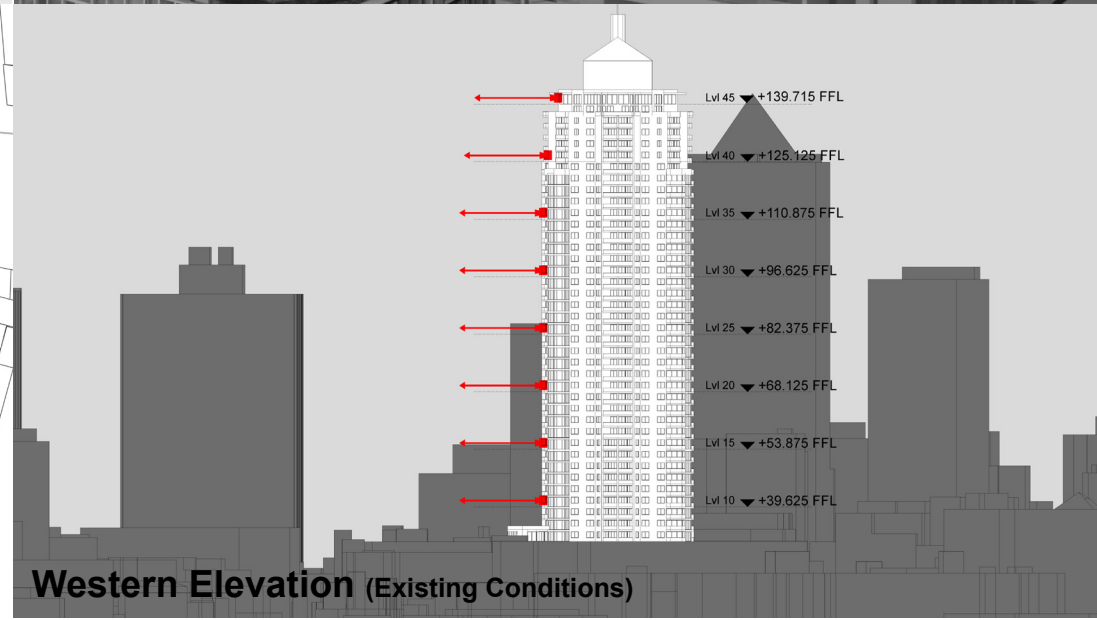
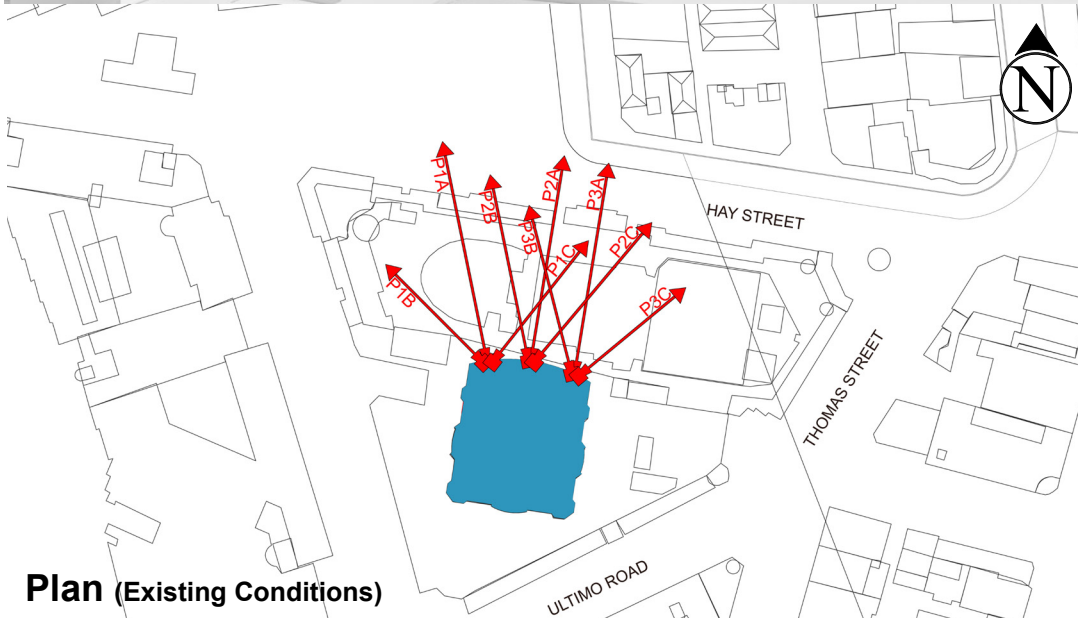
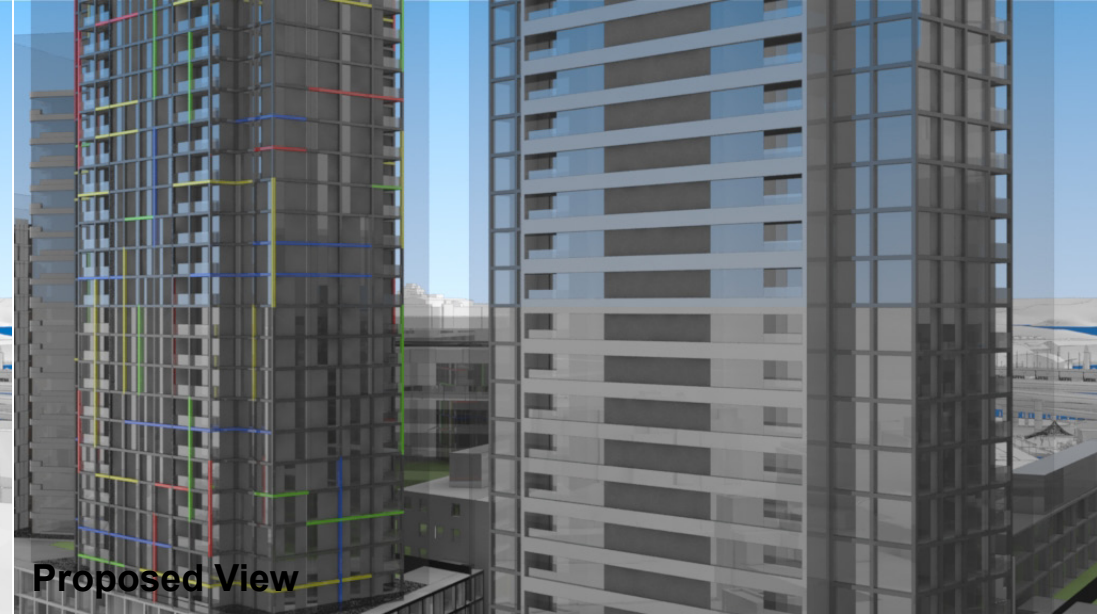
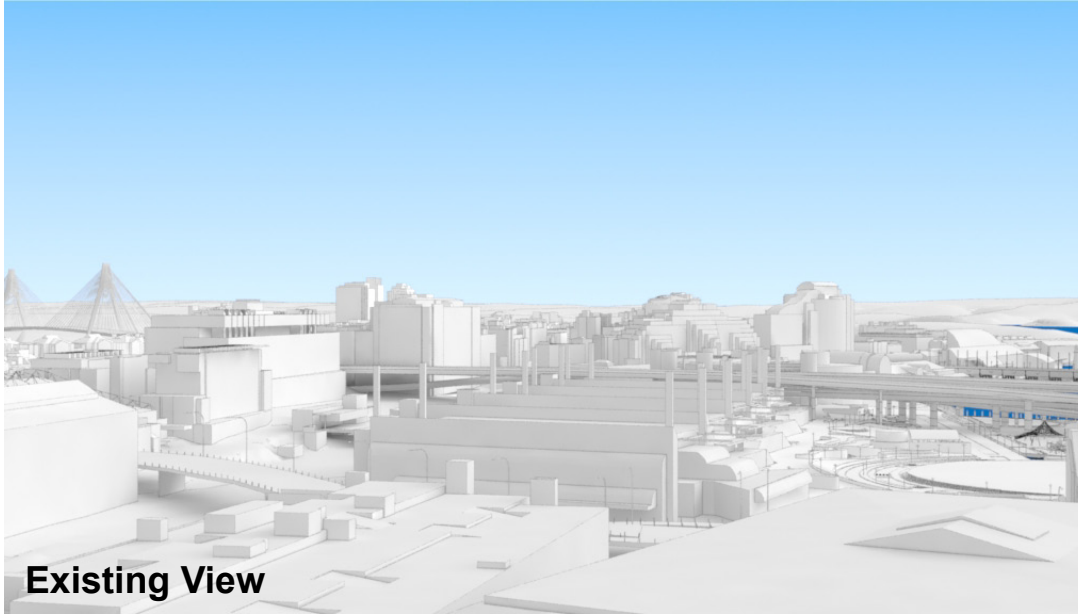
RL: 55.475 (Camera Height)

FOR INFORMATION ONLY

The Hotel shown in these images does not form part of this development application (and will be the subject of a separate development assessment process) and is included for information and broader illustrative purposes. Illustrative designs of built forms in the Haymarket precinct do not form part of this development application (and will be the subject of separate development assessment processes) and is shown for information and broader illustrative purposes. These images are produced here for view analysis purposes only.

**LEGEND:** 95

- Key Building
- View Direction (50mm Camera)
- Hotel (subject of a future separate DA.)
- Building envelope in the Haymarket Precinct (Subject of this DA)



# Peak Apartments

Position: P2B

Level: 10

RL: 41.225 (Camera Height)

FOR INFORMATION ONLY

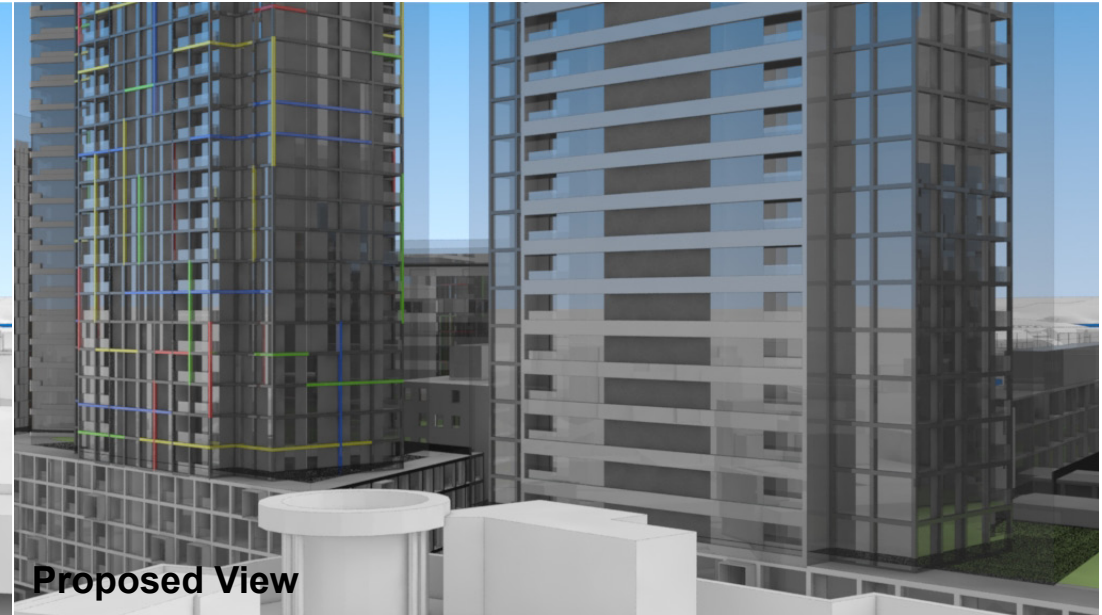
The Hotel shown in these images does not form part of this development application (and will be the subject of a separate development assessment process) and is included for information and broader illustrative purposes. Illustrative designs of built forms in the Haymarket precinct do not form part of this development application (and will be the subject of separate development assessment processes) and is shown for information and broader illustrative purposes. These images are produced here for view analysis purposes only.

**LEGEND:** 96

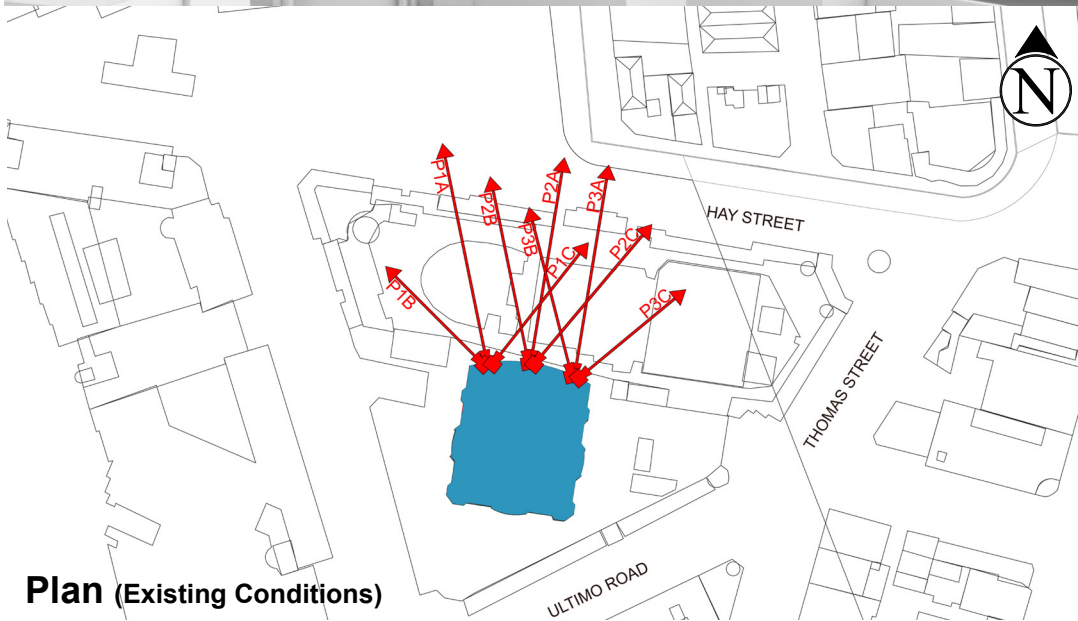
- Key Building
- View Direction (50mm Camera)
- Hotel (subject of a future separate DA.)
- Building envelope in the Haymarket Precinct (Subject of this DA)



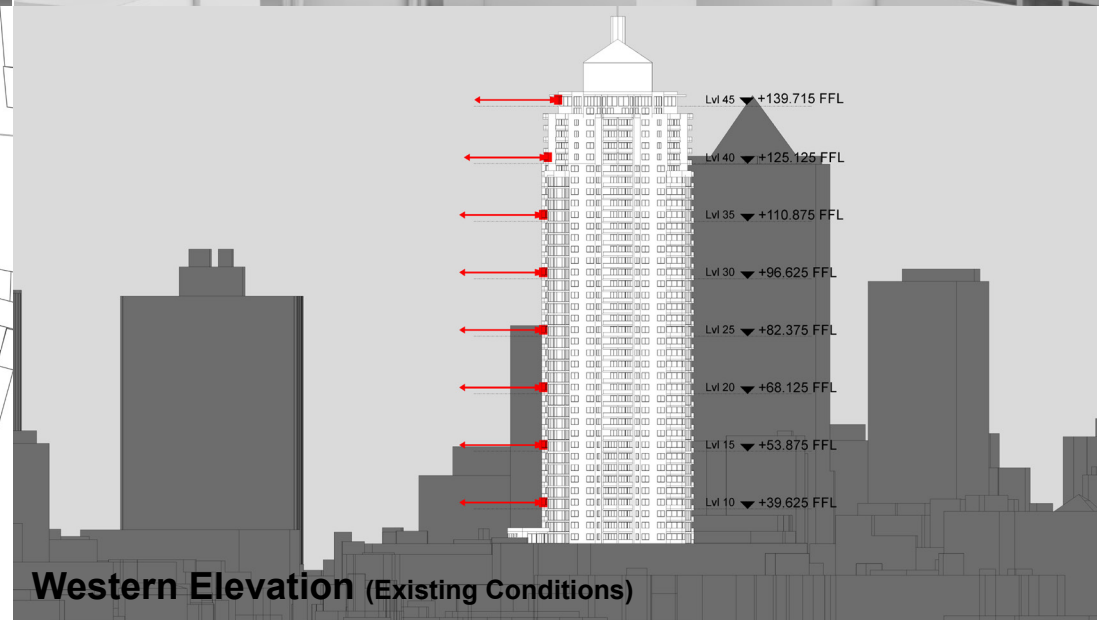
Existing View



Proposed View



Plan (Existing Conditions)



Western Elevation (Existing Conditions)

# Peak Apartments

Position: P3B

Level: 45

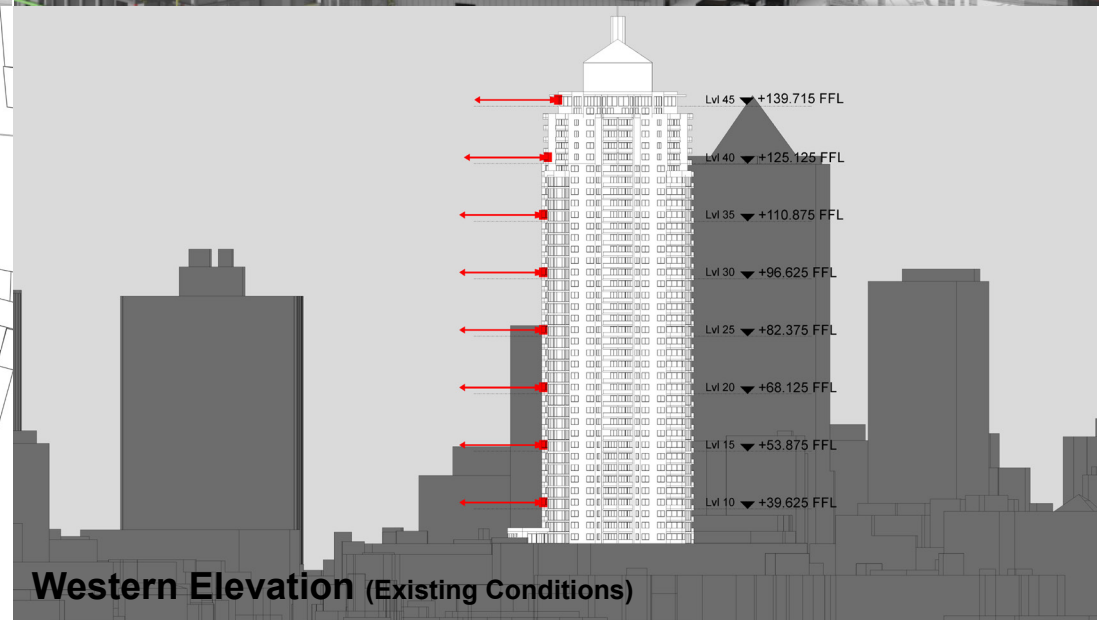
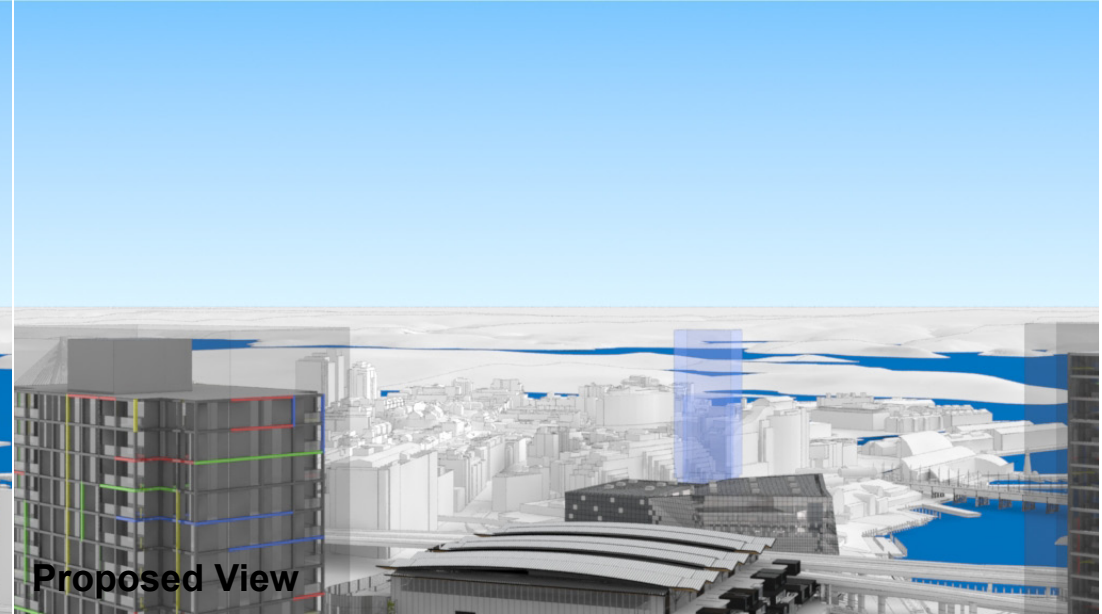
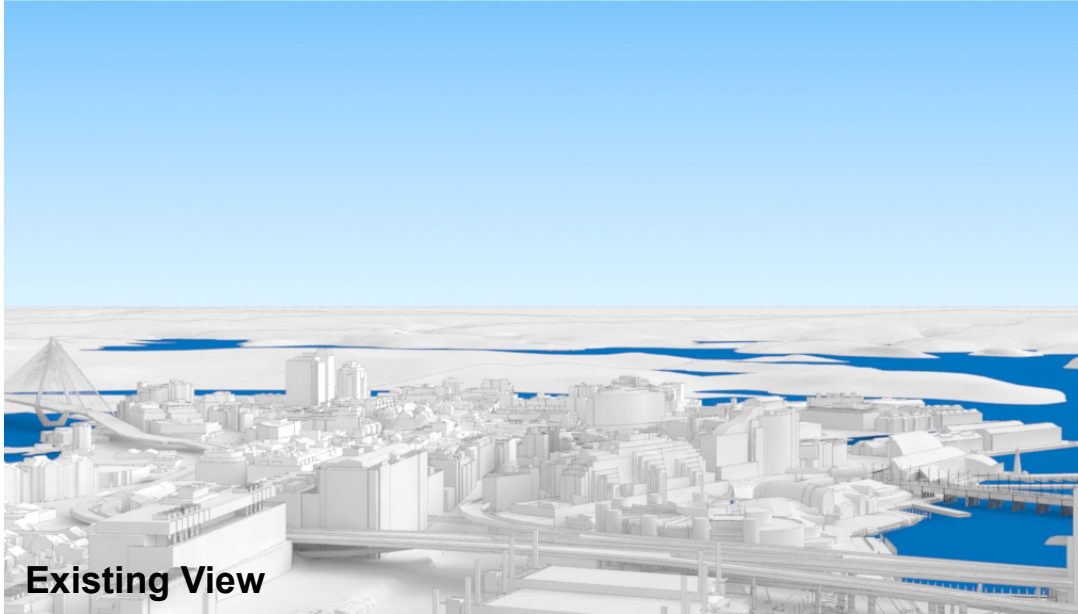
RL: 140.975 (Camera Height)

FOR INFORMATION ONLY

The Hotel shown in these images does not form part of this development application (and will be the subject of a separate development assessment process) and is included for information and broader illustrative purposes. Illustrative designs of built forms in the Haymarket precinct do not form part of this development application (and will be the subject of separate development assessment processes) and is shown for information and broader illustrative purposes. These images are produced here for view analysis purposes only.

**LEGEND:** 113

- Key Building
- View Direction (50mm Camera)
- Hotel (subject of a future separate DA.)
- Building envelope in the Haymarket Precinct (Subject of this DA)



# Peak Apartments

Position: P3B

Level: 40

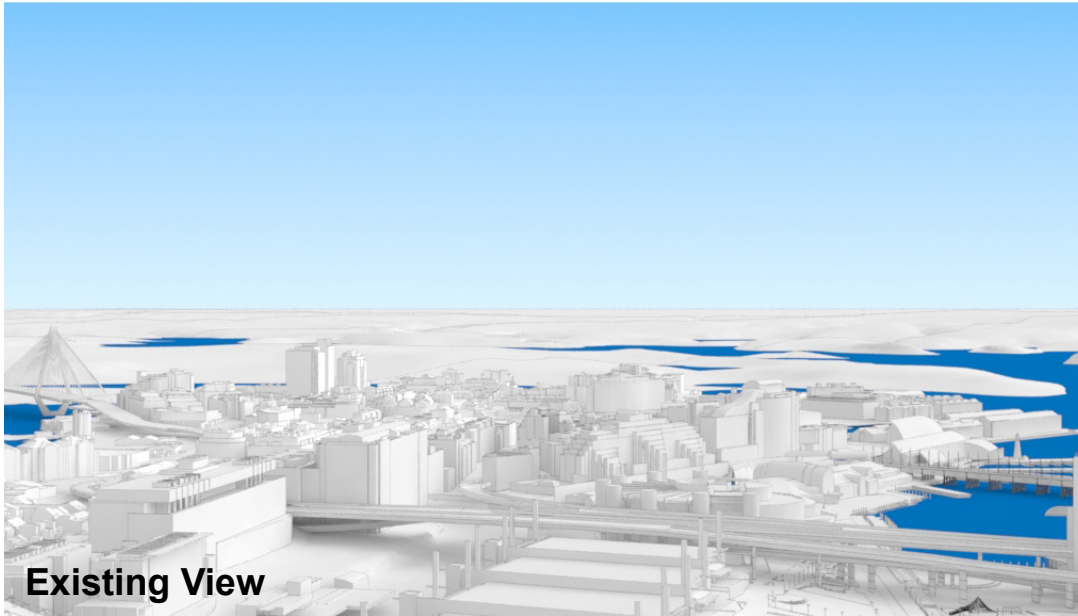
RL: 126.725 (Camera Height)

FOR INFORMATION ONLY

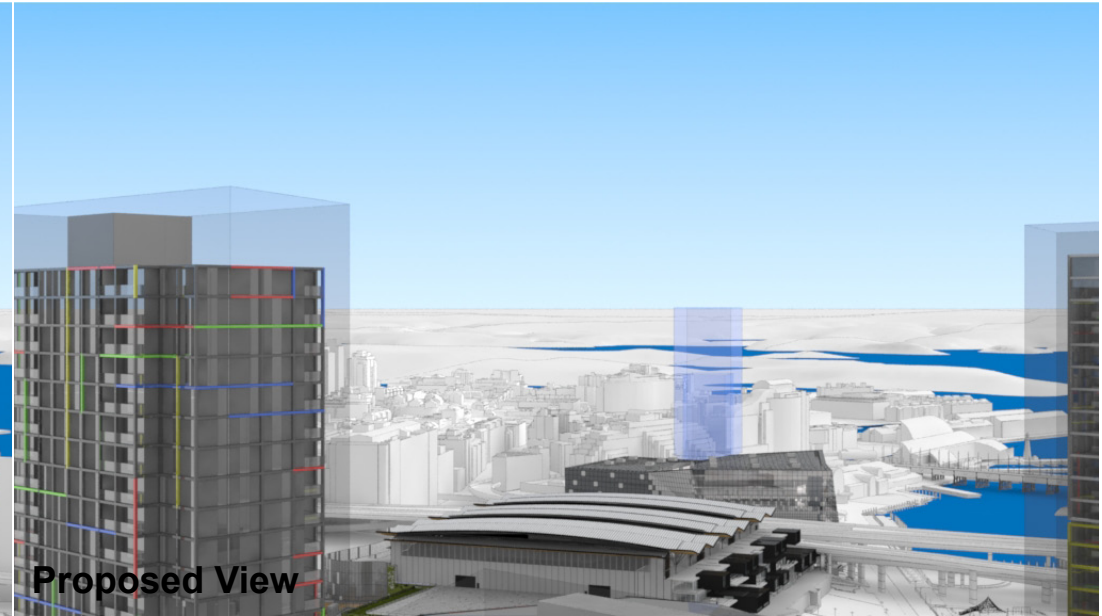
The Hotel shown in these images does not form part of this development application (and will be the subject of a separate development assessment process) and is included for information and broader illustrative purposes. Illustrative designs of built forms in the Haymarket precinct do not form part of this development application (and will be the subject of separate development assessment processes) and is shown for information and broader illustrative purposes. These images are produced here for view analysis purposes only.

**LEGEND:** 114

- Key Building
- View Direction (50mm Camera)
- Hotel (subject of a future separate DA.)
- Building envelope in the Haymarket Precinct (Subject of this DA)



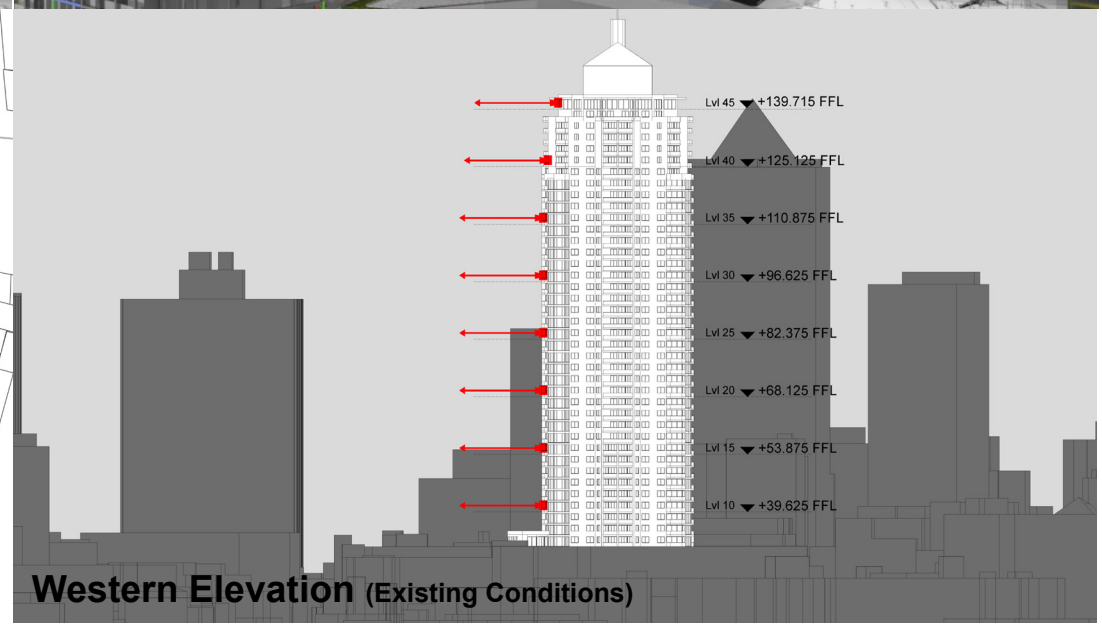
Existing View



Proposed View



Plan (Existing Conditions)



Western Elevation (Existing Conditions)

# Peak Apartments

Position: P3B

Level: 35

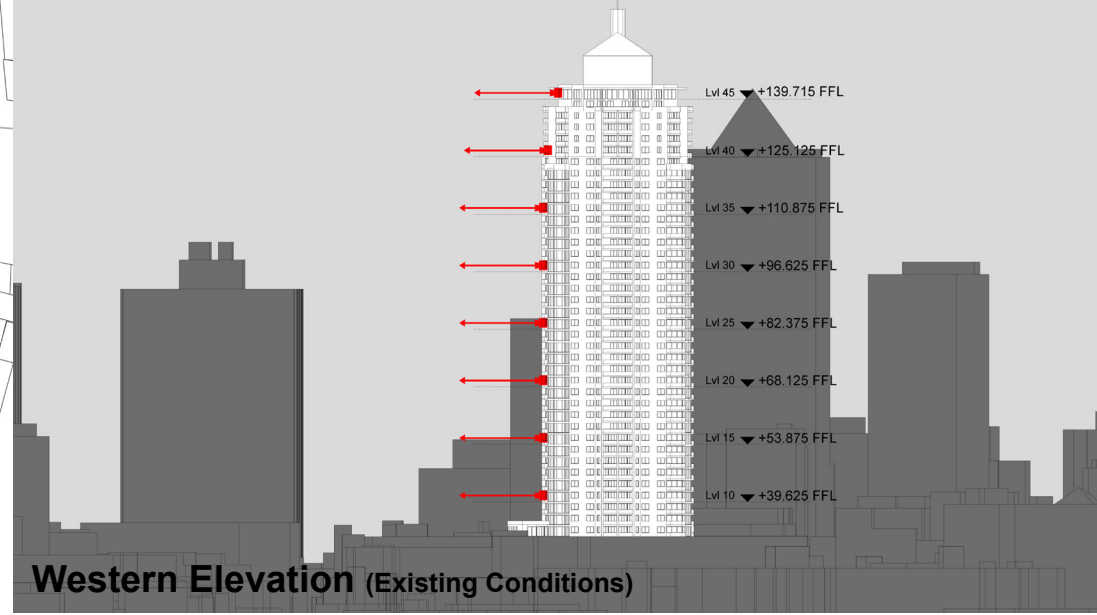
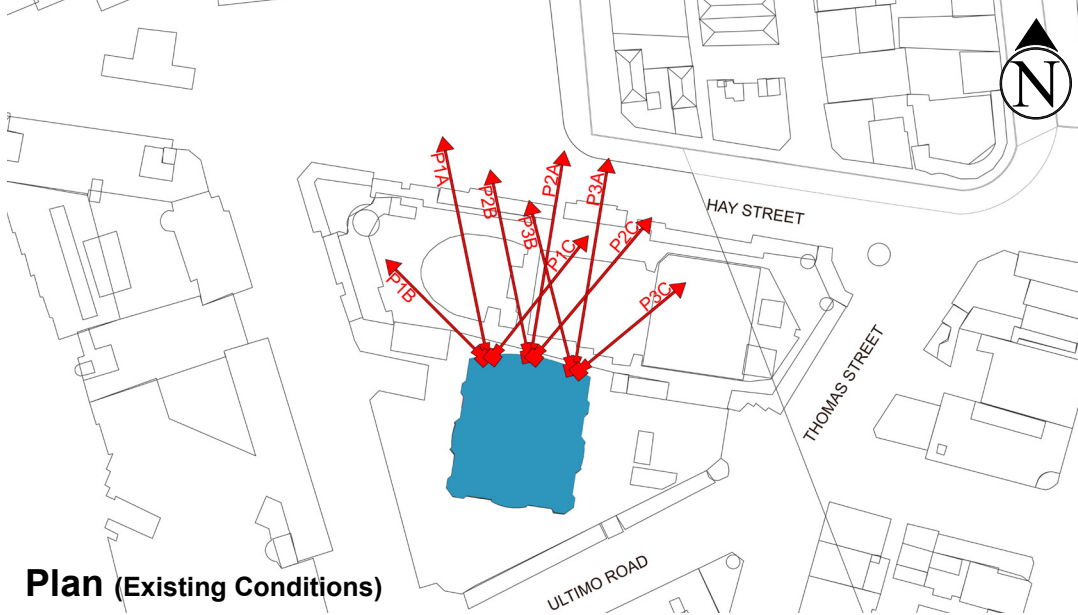
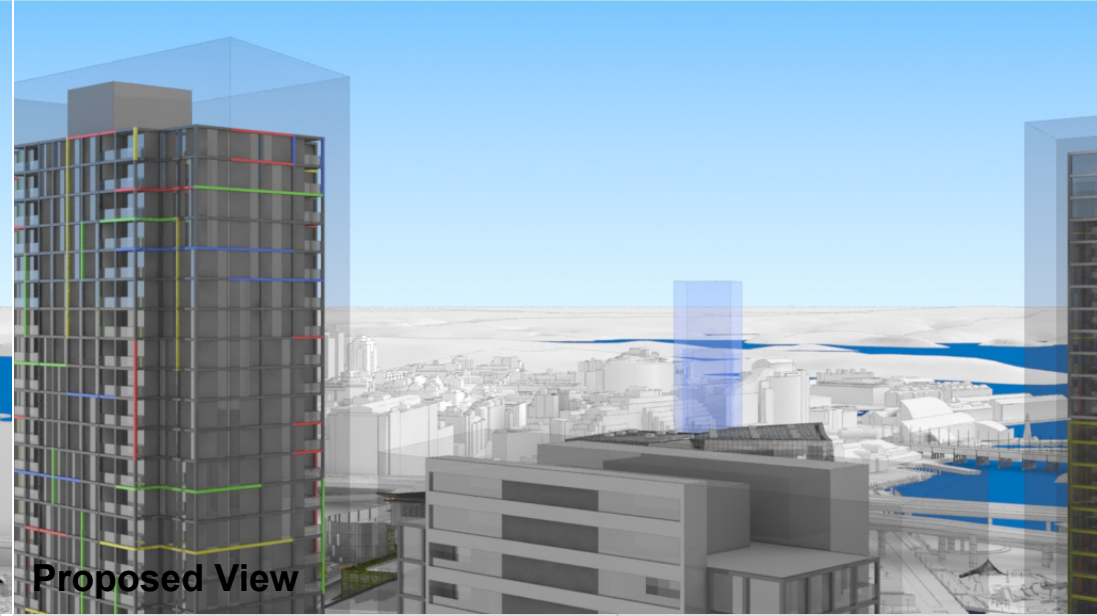
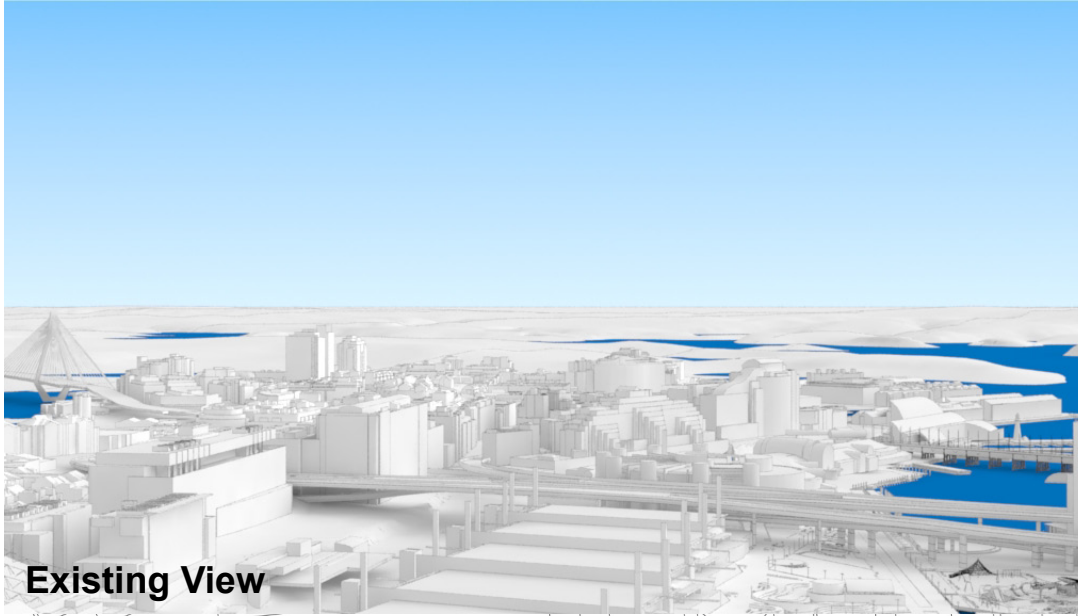
RL: 112.475 (Camera Height)

FOR INFORMATION ONLY

The Hotel shown in these images does not form part of this development application (and will be the subject of a separate development assessment process) and is included for information and broader illustrative purposes. Illustrative designs of built forms in the Haymarket precinct do not form part of this development application (and will be the subject of separate development assessment processes) and is shown for information and broader illustrative purposes. These images are produced here for view analysis purposes only.

**LEGEND:** 115

- Key Building
- View Direction (50mm Camera)
- Hotel (subject of a future separate DA.)
- Building envelope in the Haymarket Precinct (Subject of this DA)



# Peak Apartments

Position: P3B

Level: 30

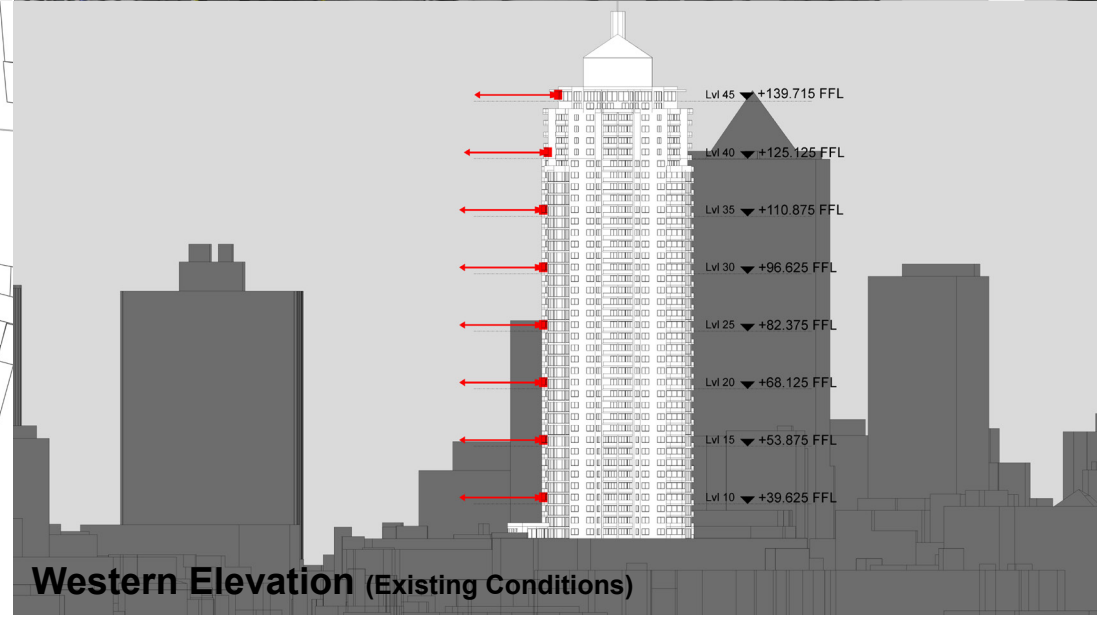
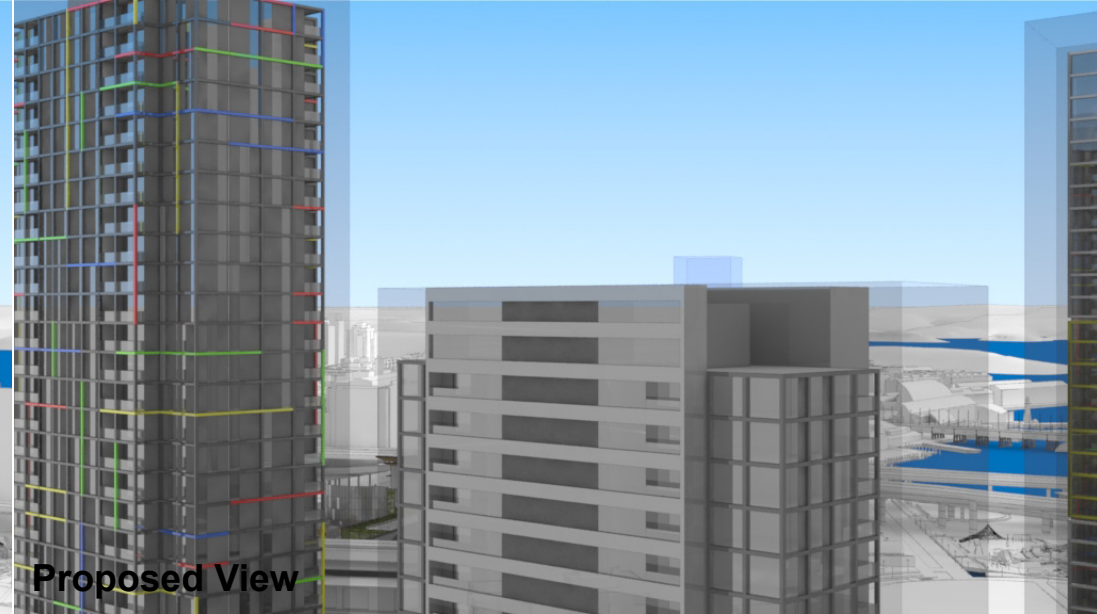
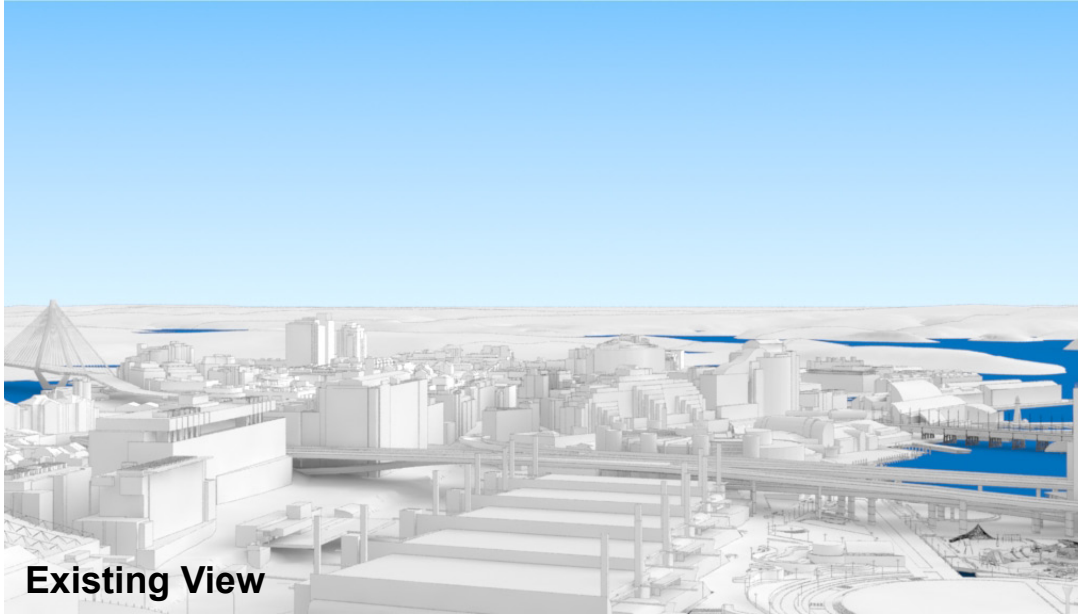
RL: 98.225 (Camera Height)

FOR INFORMATION ONLY

The Hotel shown in these images does not form part of this development application (and will be the subject of a separate development assessment process) and is included for information and broader illustrative purposes. Illustrative designs of built forms in the Haymarket precinct do not form part of this development application (and will be the subject of separate development assessment processes) and is shown for information and broader illustrative purposes. These images are produced here for view analysis purposes only.

**LEGEND:** 116

- Key Building
- View Direction (50mm Camera)
- Hotel (subject of a future separate DA.)
- Building envelope in the Haymarket Precinct (Subject of this DA)



# Peak Apartments

Position: P3B

Level: 25

RL: 83.975 (Camera Height)

FOR INFORMATION ONLY

The Hotel shown in these images does not form part of this development application (and will be the subject of a separate development assessment process) and is included for information and broader illustrative purposes. Illustrative designs of built forms in the Haymarket precinct do not form part of this development application (and will be the subject of separate development assessment processes) and is shown for information and broader illustrative purposes. These images are produced here for view analysis purposes only.

**LEGEND:** 117

- Key Building
- View Direction (50mm Camera)
- Hotel (subject of a future separate DA.)
- Building envelope in the Haymarket Precinct (Subject of this DA)

