

# Oaks Goldsbrough Apartments

Position: P2A

Level: 10

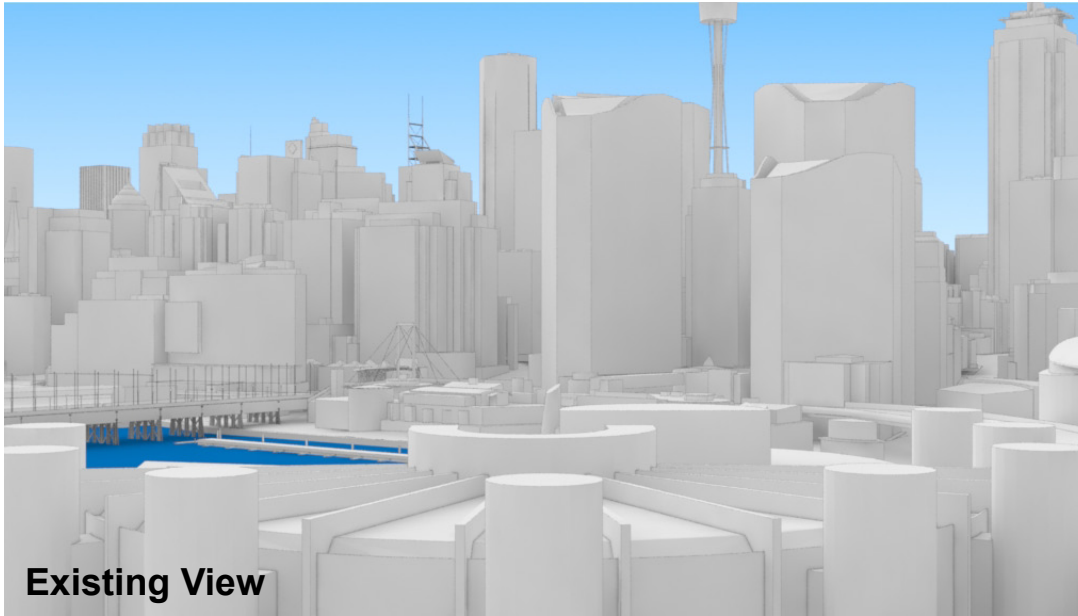
RL: 44.790 (Camera Height)

FOR INFORMATION ONLY

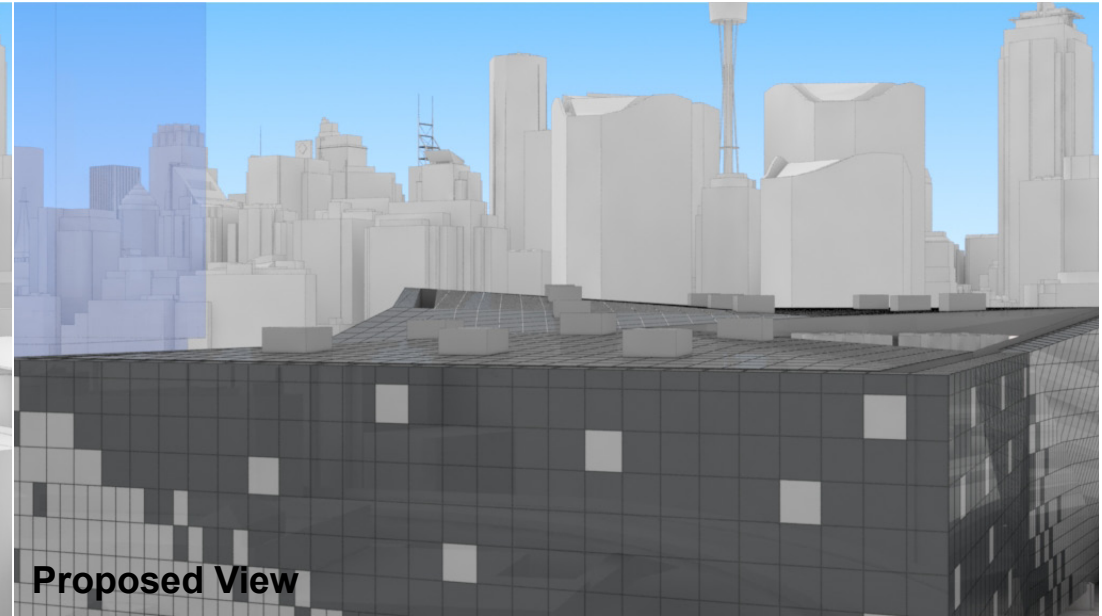
The Hotel shown in these images does not form part of this development application (and will be the subject of a separate development assessment process) and is included for information and broader illustrative purposes. Illustrative designs of built forms in the Haymarket precinct do not form part of this development application (and will be the subject of separate development assessment processes) and is shown for information and broader illustrative purposes. These images are produced here for view analysis purposes only.

**LEGEND:** 34

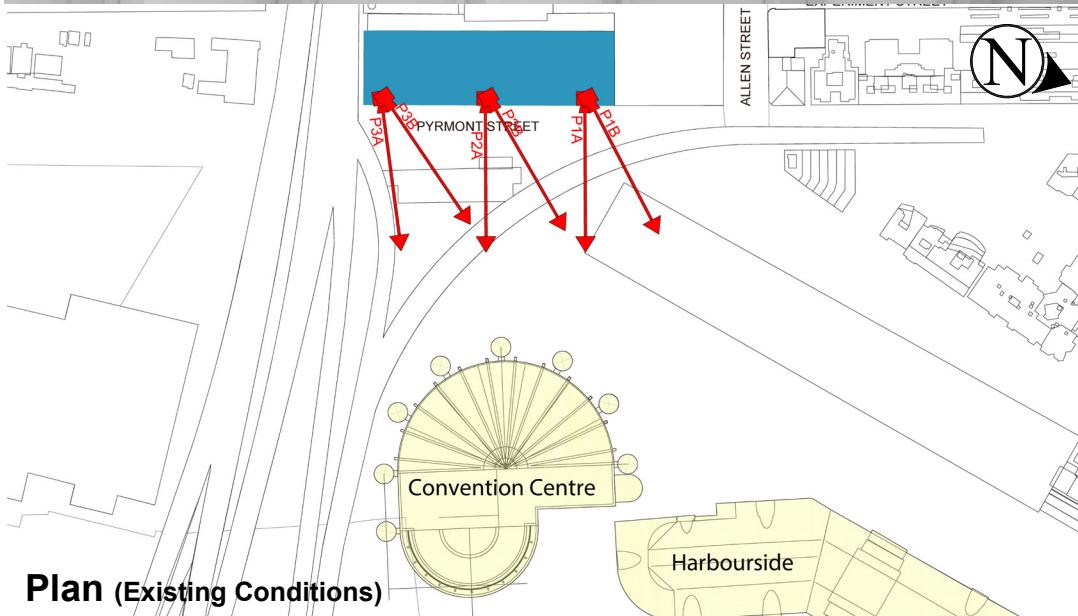
- Key Building
- Neighbouring Buildings
- View Direction (50mm Camera)
- Camera Position
- Hotel (subject of a future separate DA.)



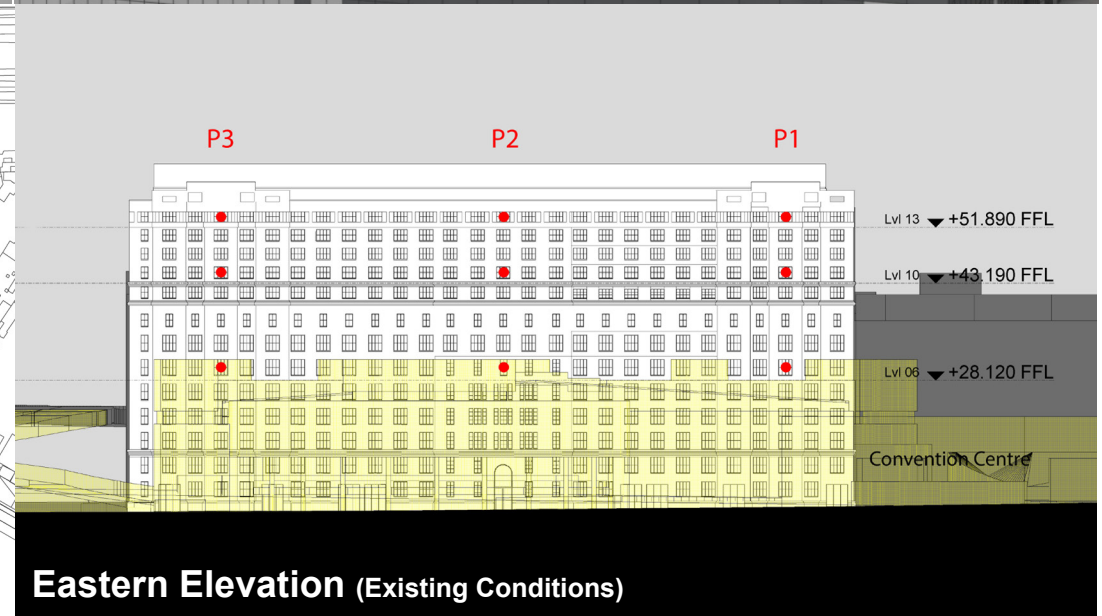
Existing View



Proposed View



Plan (Existing Conditions)



Eastern Elevation (Existing Conditions)

# Oaks Goldsbrough Apartments

Position: P2A

Level: 06

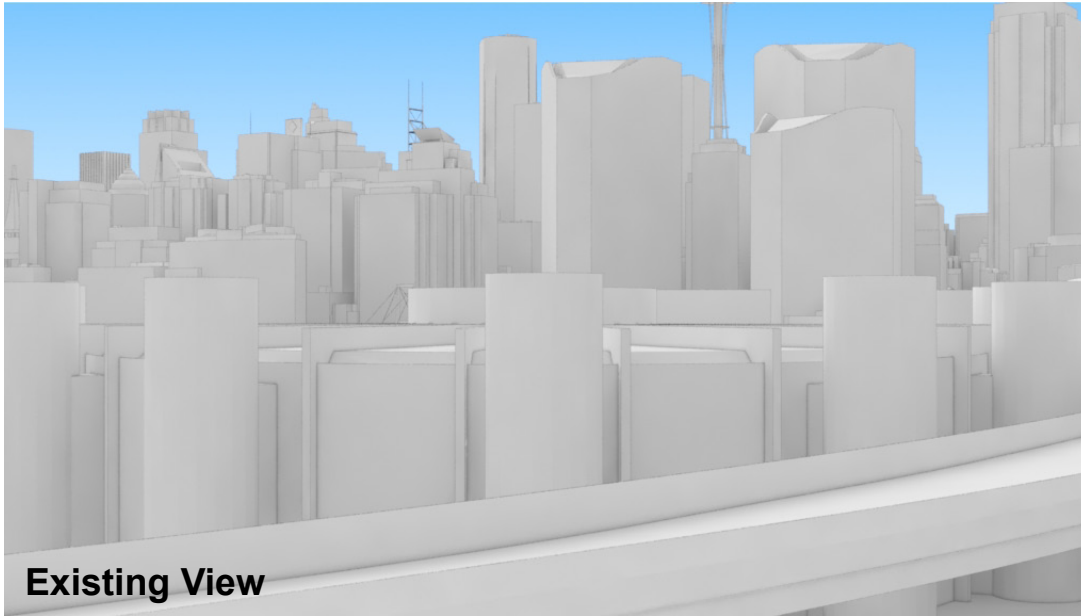
RL: 29.720 (Camera Height)

FOR INFORMATION ONLY

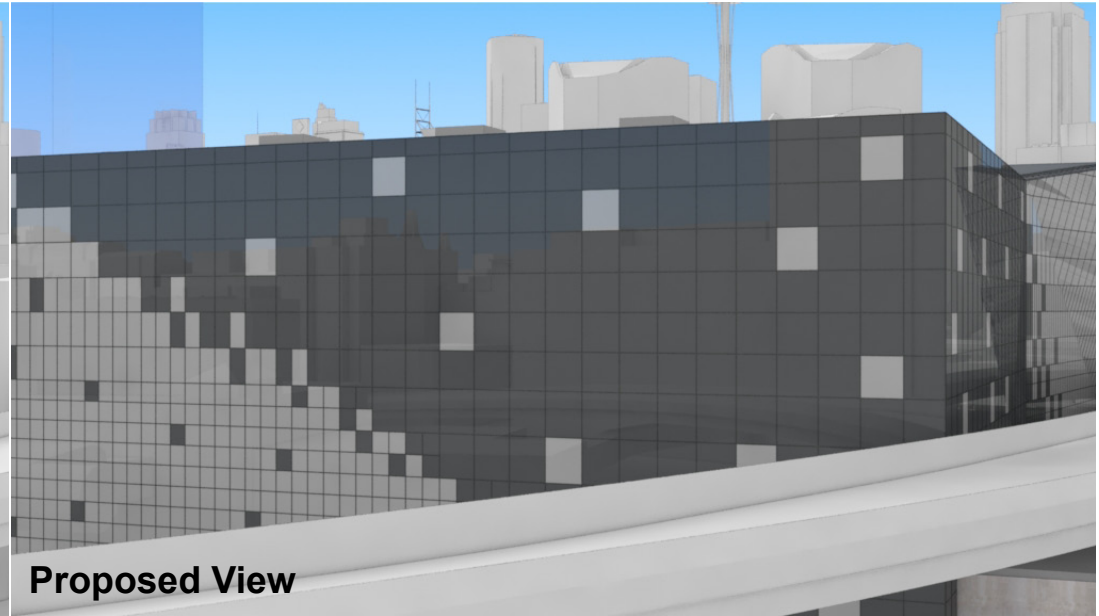
The Hotel shown in these images does not form part of this development application (and will be the subject of a separate development assessment process) and is included for information and broader illustrative purposes. Illustrative designs of built forms in the Haymarket precinct do not form part of this development application (and will be the subject of separate development assessment processes) and is shown for information and broader illustrative purposes. These images are produced here for view analysis purposes only.

**LEGEND:** 35

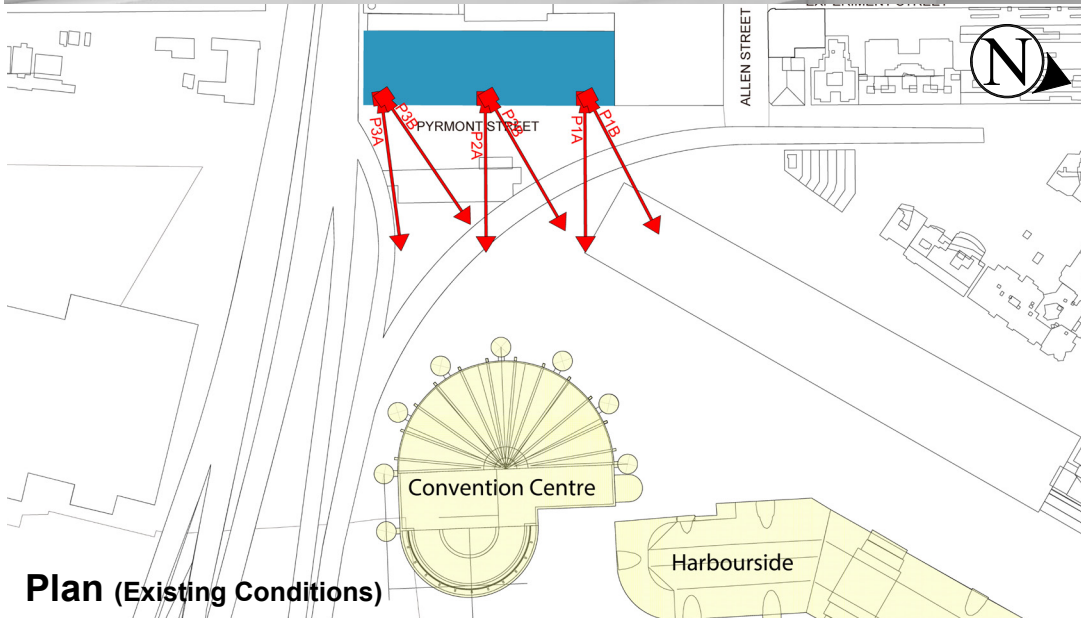
- Key Building
- Neighbouring Buildings
- View Direction (50mm Camera)
- Camera Position
- Hotel (subject of a future separate DA.)



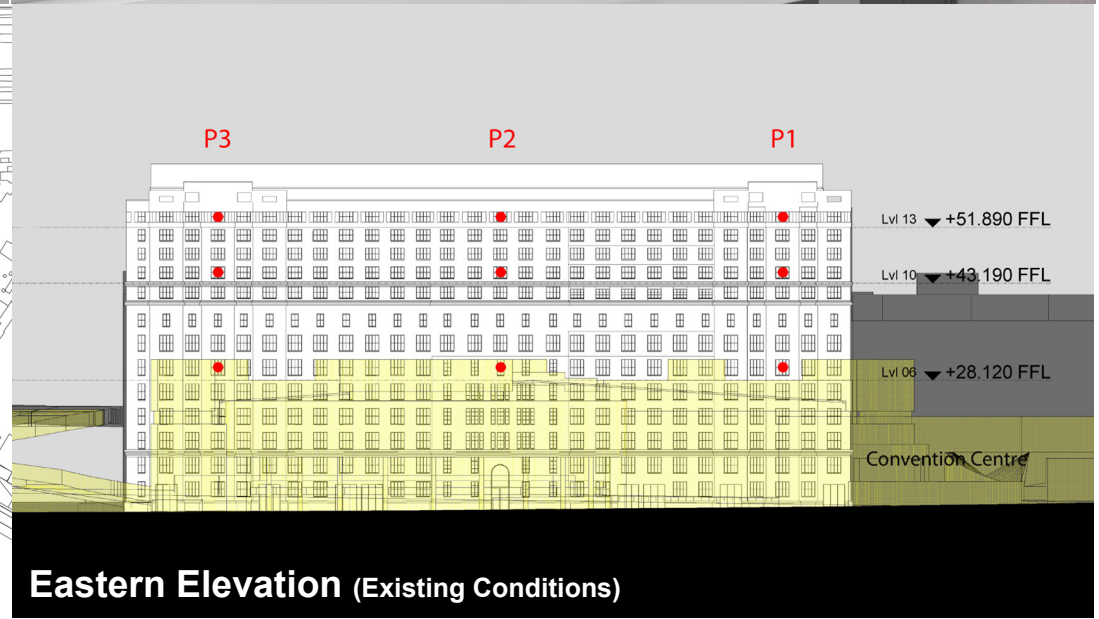
Existing View



Proposed View



Plan (Existing Conditions)



Eastern Elevation (Existing Conditions)

# Oaks Goldsbrough Apartments

Position: P2B

Level: 13

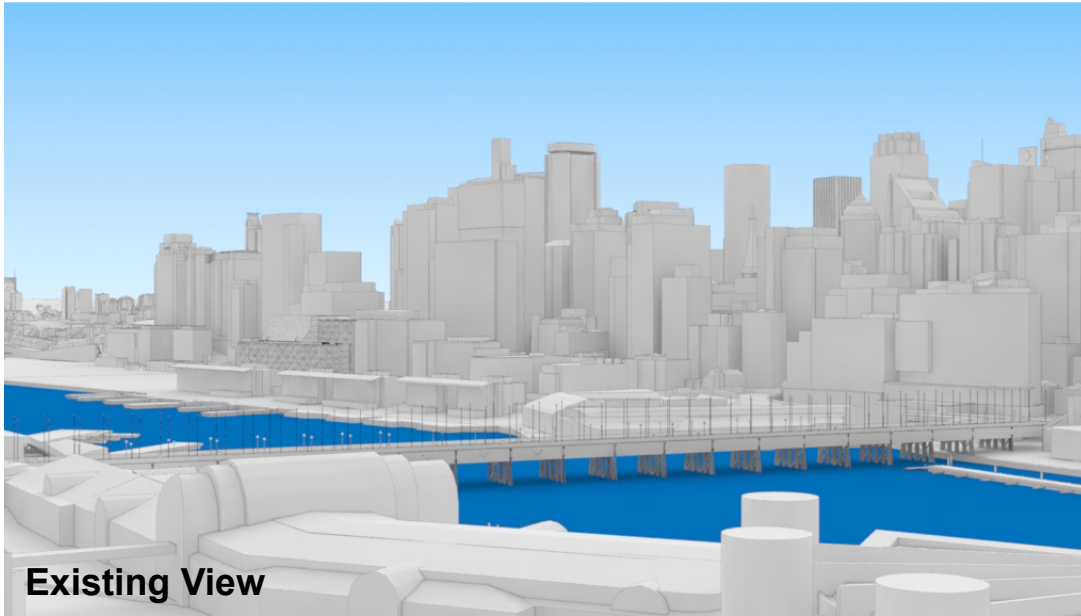
RL: 53.49 (Camera Height)

FOR INFORMATION ONLY

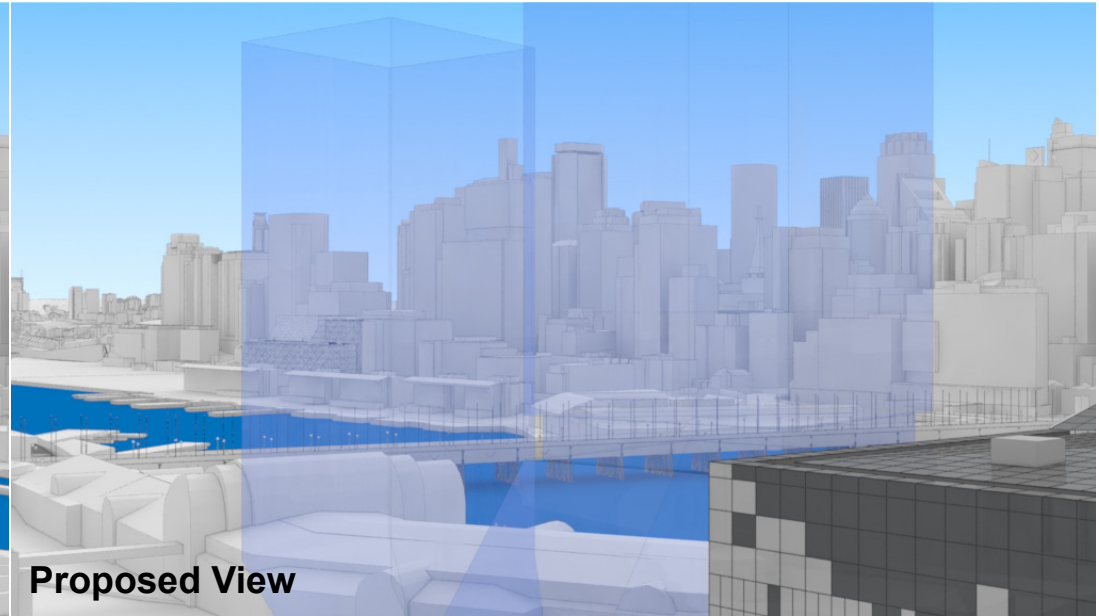
The Hotel shown in these images does not form part of this development application (and will be the subject of a separate development assessment process) and is included for information and broader illustrative purposes. Illustrative designs of built forms in the Haymarket precinct do not form part of this development application (and will be the subject of separate development assessment processes) and is shown for information and broader illustrative purposes. These images are produced here for view analysis purposes only.

**LEGEND:** 36

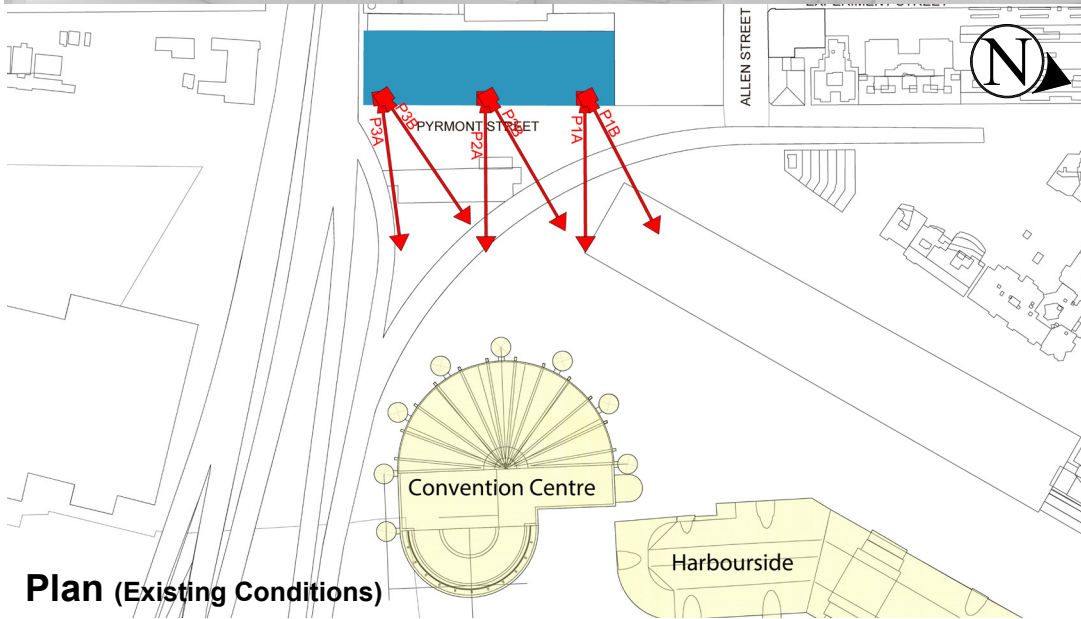
- Key Building
- Neighbouring Buildings
- View Direction (50mm Camera)
- Camera Position
- Hotel (subject of a future separate DA.)



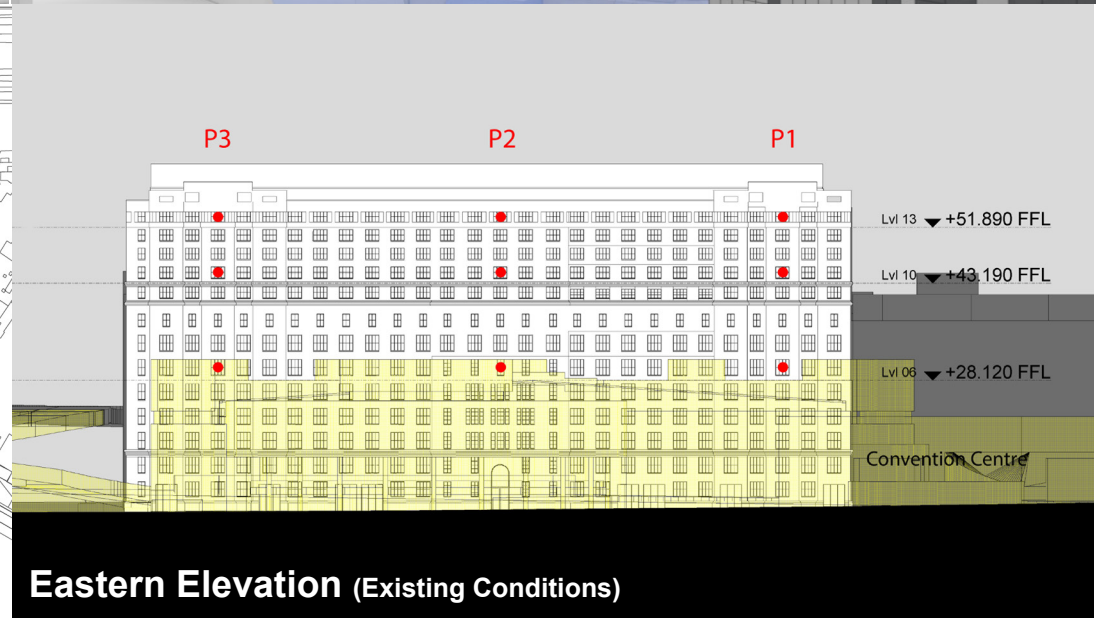
Existing View



Proposed View



Plan (Existing Conditions)



Eastern Elevation (Existing Conditions)

# Oaks Goldsbrough Apartments

Position: P2B

Level: 10

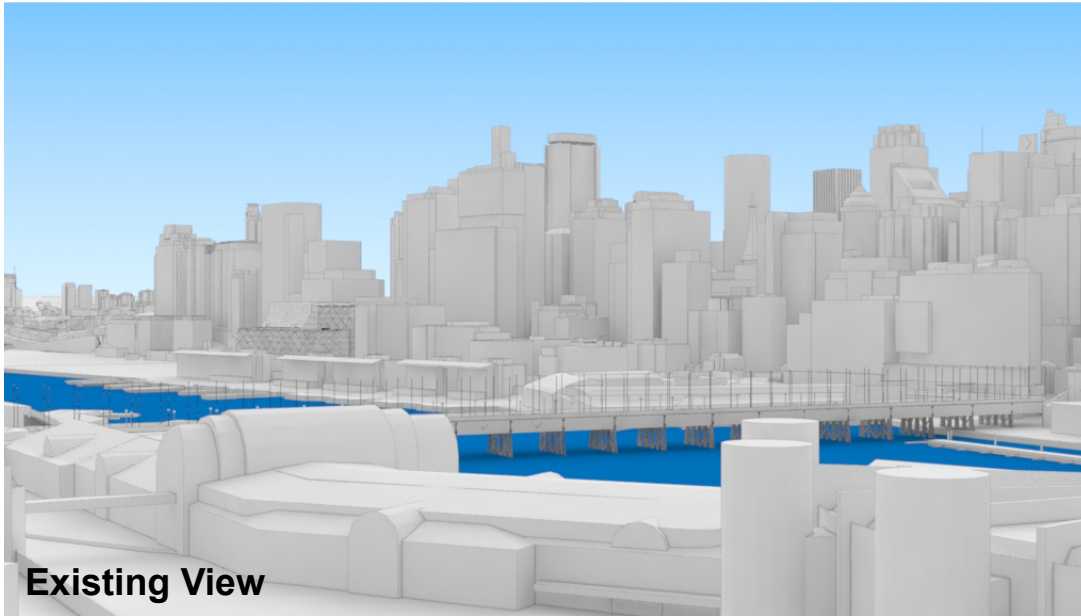
RL: 44.790 (Camera Height)

FOR INFORMATION ONLY

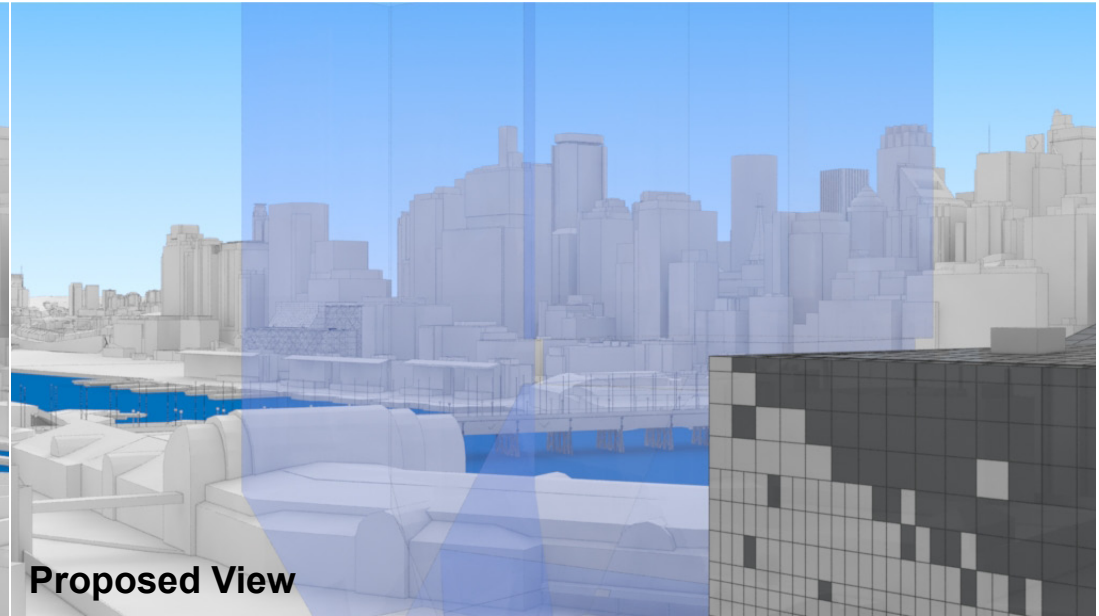
The Hotel shown in these images does not form part of this development application (and will be the subject of a separate development assessment process) and is included for information and broader illustrative purposes. Illustrative designs of built forms in the Haymarket precinct do not form part of this development application (and will be the subject of separate development assessment processes) and is shown for information and broader illustrative purposes. These images are produced here for view analysis purposes only.

**LEGEND:** 37

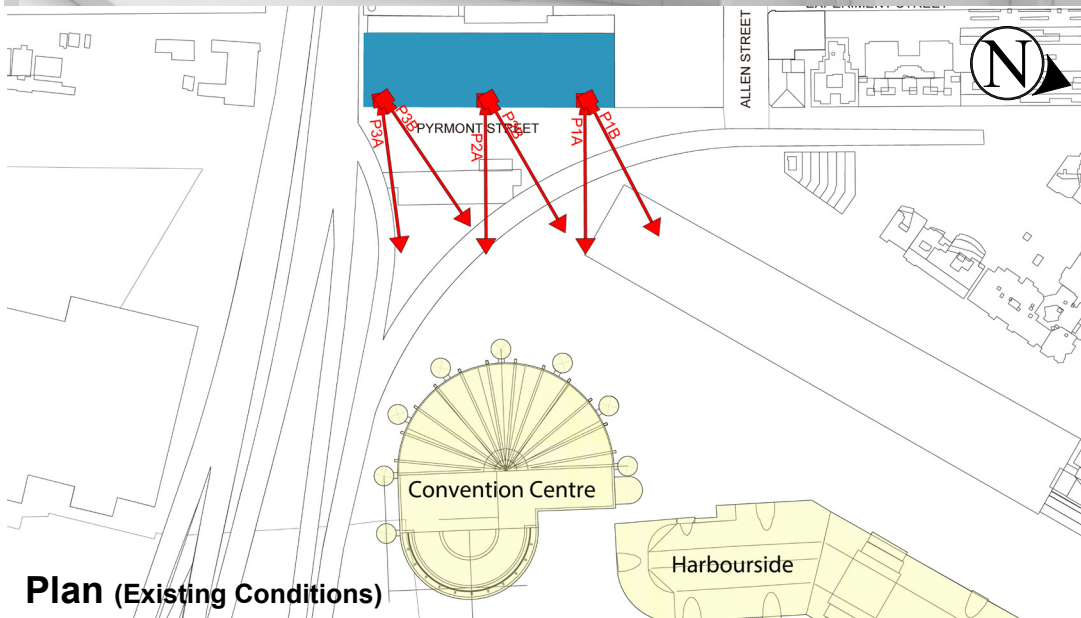
- Key Building
- Neighbouring Buildings
- View Direction (50mm Camera)
- Camera Position
- Hotel (subject of a future separate DA.)



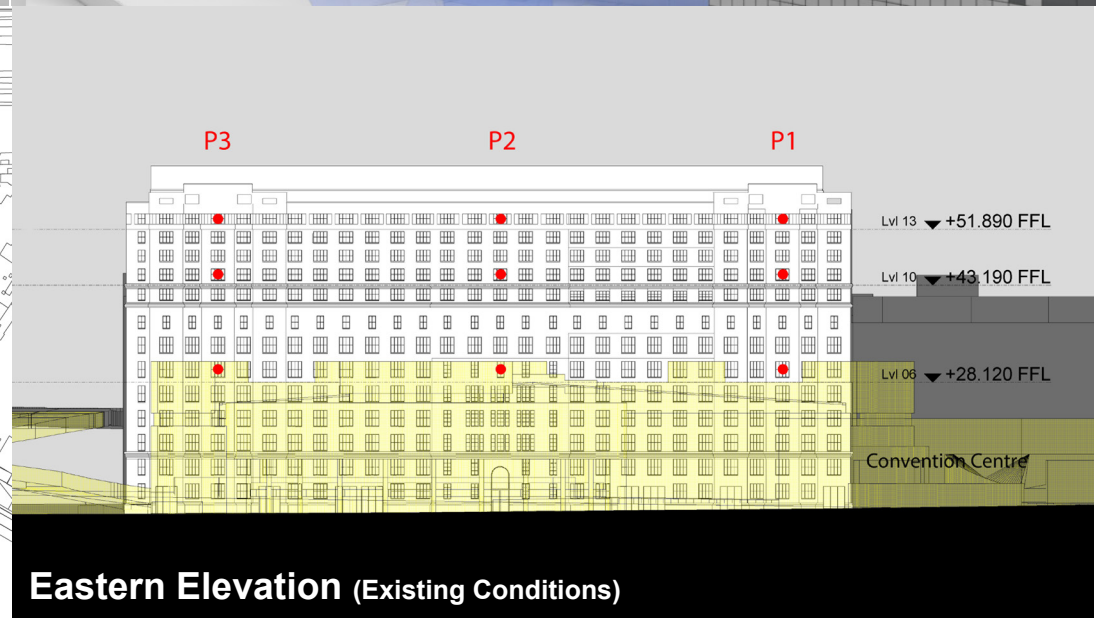
Existing View



Proposed View



Plan (Existing Conditions)



Eastern Elevation (Existing Conditions)

# Oaks Goldsbrough Apartments

Position: P2B

Level: 06

RL: 29.720 (Camera Height)

FOR INFORMATION ONLY

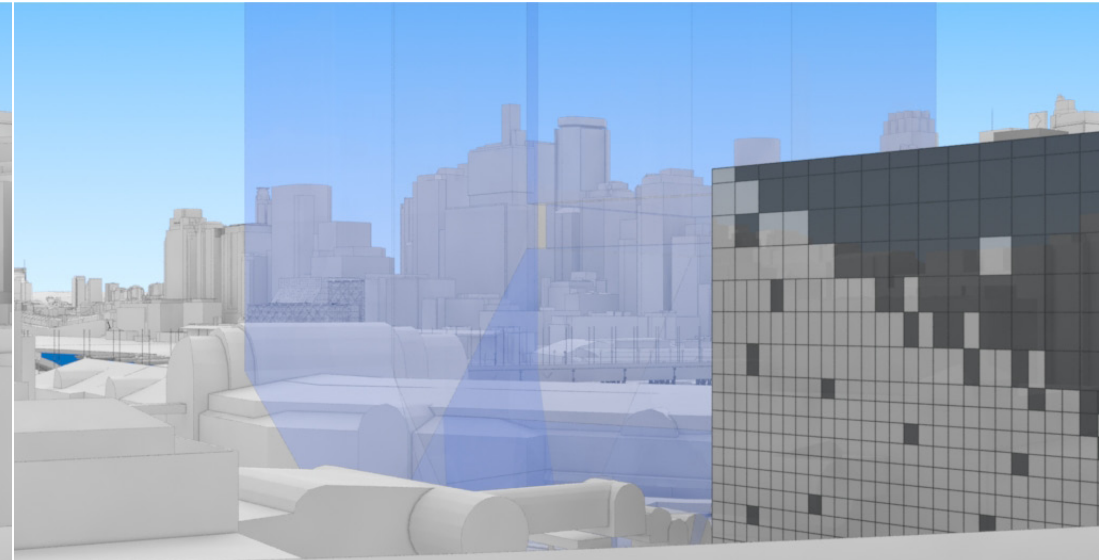
The Hotel shown in these images does not form part of this development application (and will be the subject of a separate development assessment process) and is included for information and broader illustrative purposes. Illustrative designs of built forms in the Haymarket precinct do not form part of this development application (and will be the subject of separate development assessment processes) and is shown for information and broader illustrative purposes. These images are produced here for view analysis purposes only.

**LEGEND:** 38

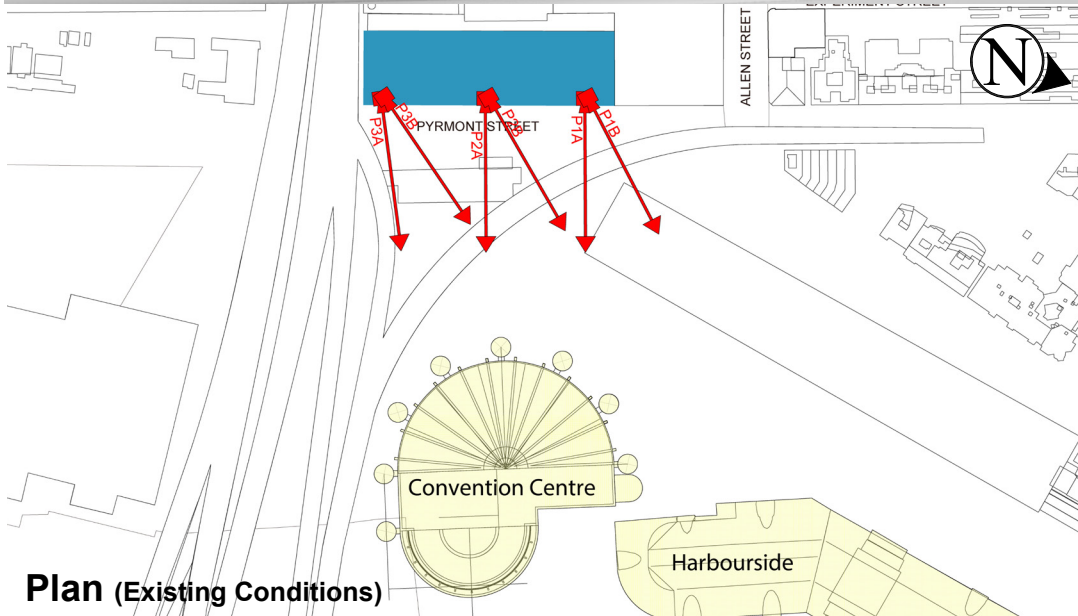
- Key Building
- Neighbouring Buildings
- View Direction (50mm Camera)
- Camera Position
- Hotel (subject of a future separate DA.)



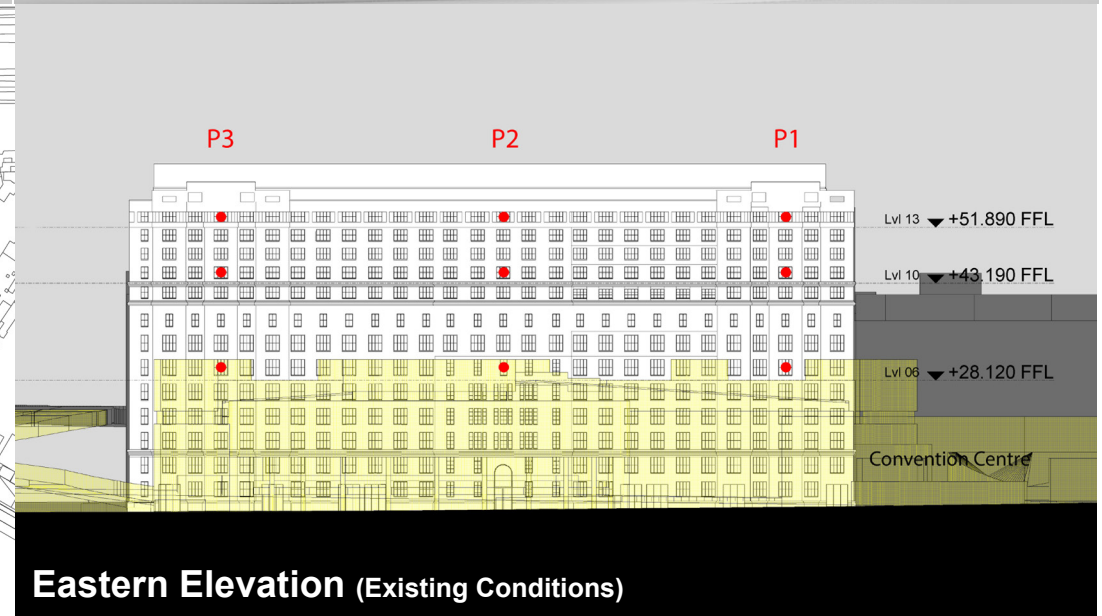
Existing View



Proposed View



Plan (Existing Conditions)



Eastern Elevation (Existing Conditions)

# Oaks Goldsbrough Apartments

Position: P3B

Level: 13

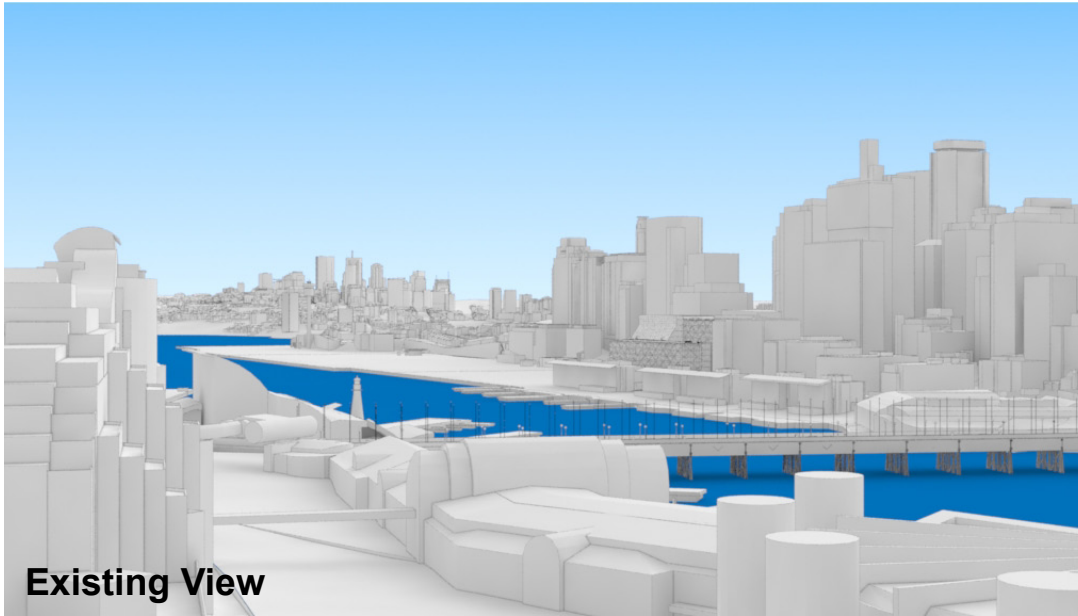
RL: 53.49 (Camera Height)

FOR INFORMATION ONLY

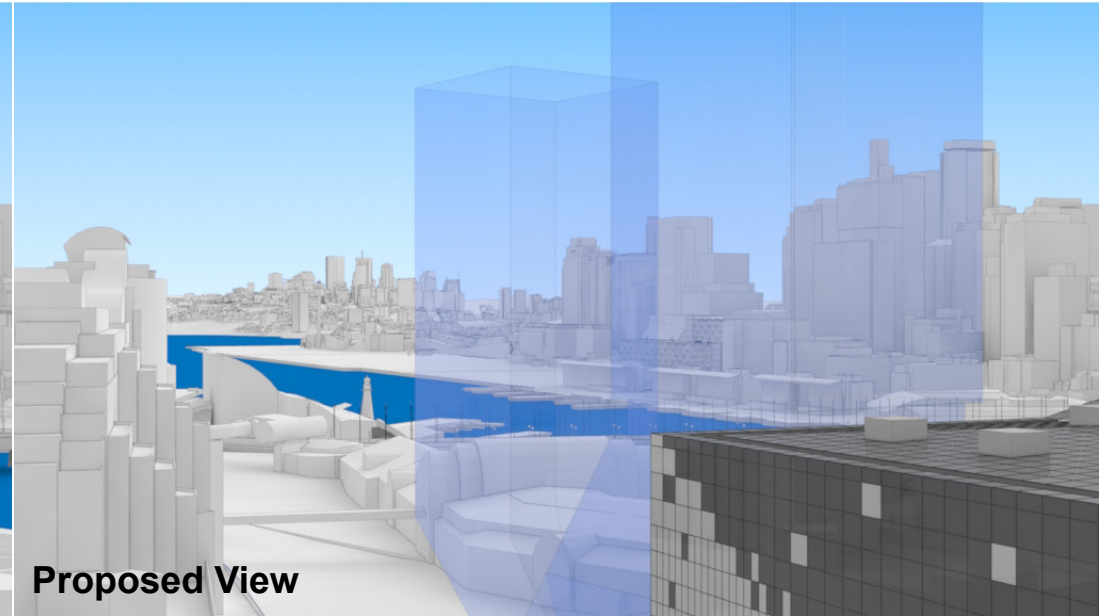
The Hotel shown in these images does not form part of this development application (and will be the subject of a separate development assessment process) and is included for information and broader illustrative purposes. Illustrative designs of built forms in the Haymarket precinct do not form part of this development application (and will be the subject of separate development assessment processes) and is shown for information and broader illustrative purposes. These images are produced here for view analysis purposes only.

**LEGEND:** 42

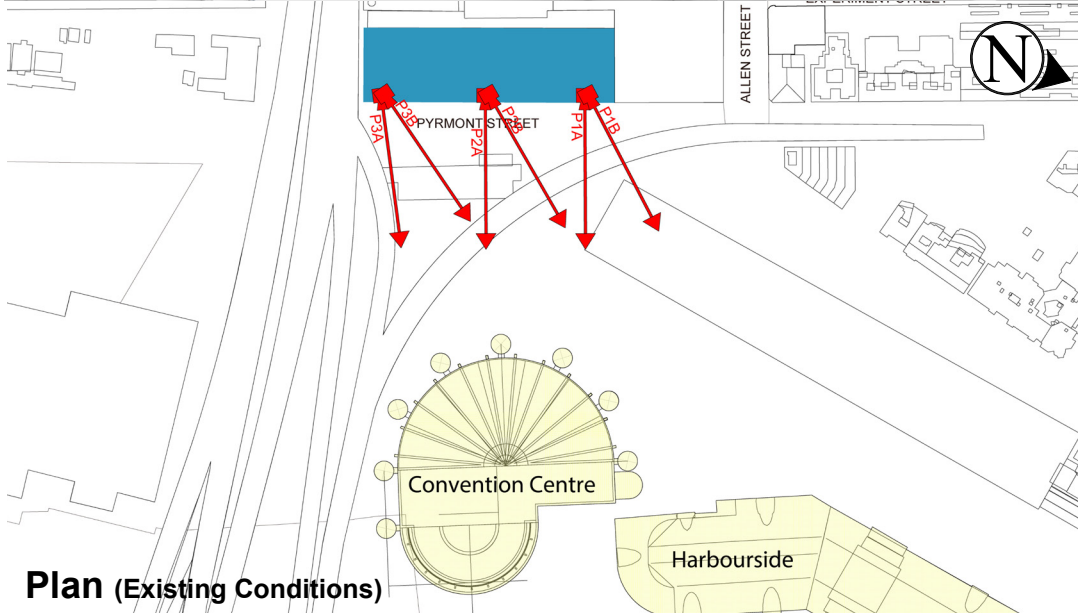
- Key Building
- Neighbouring Buildings
- View Direction (50mm Camera)
- Camera Position
- Hotel (subject of a future separate DA.)



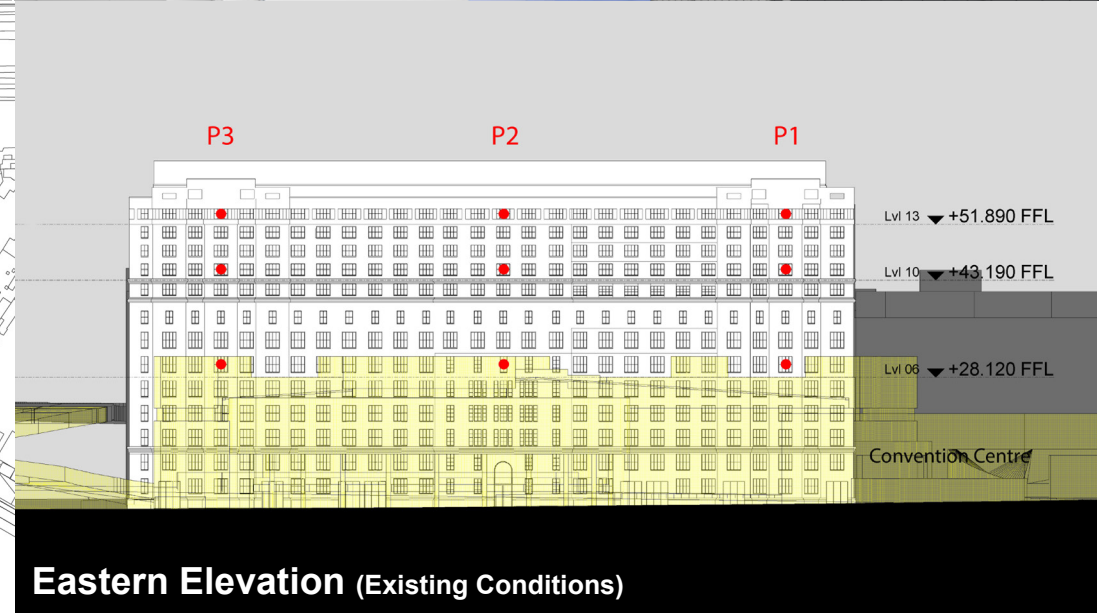
Existing View



Proposed View



Plan (Existing Conditions)



Eastern Elevation (Existing Conditions)

# Oaks Goldsbrough Apartments

Position: P3B

Level: 10

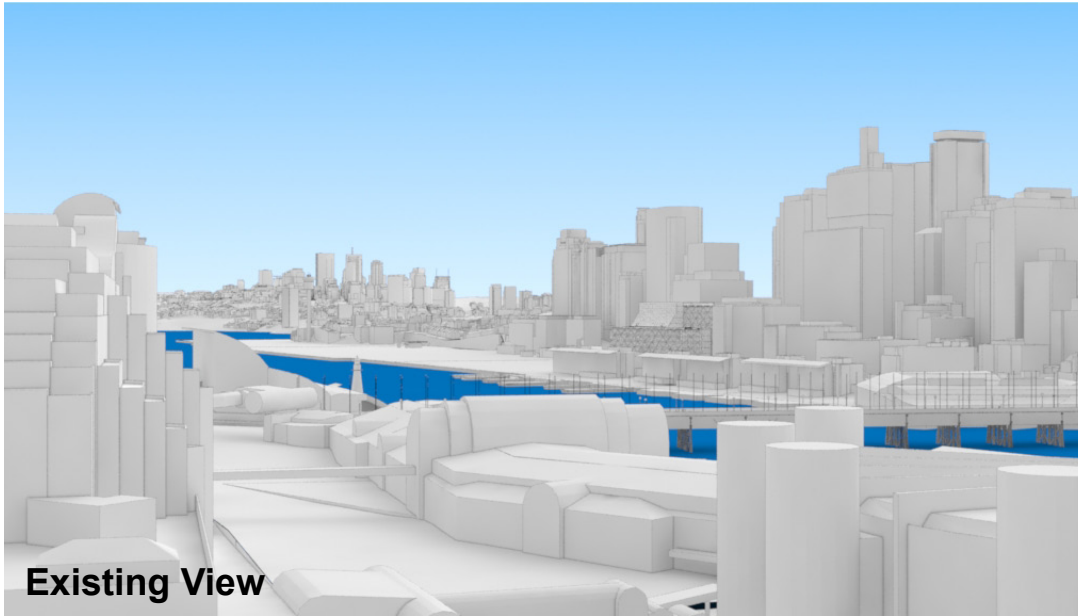
RL: 44.790 (Camera Height)

FOR INFORMATION ONLY

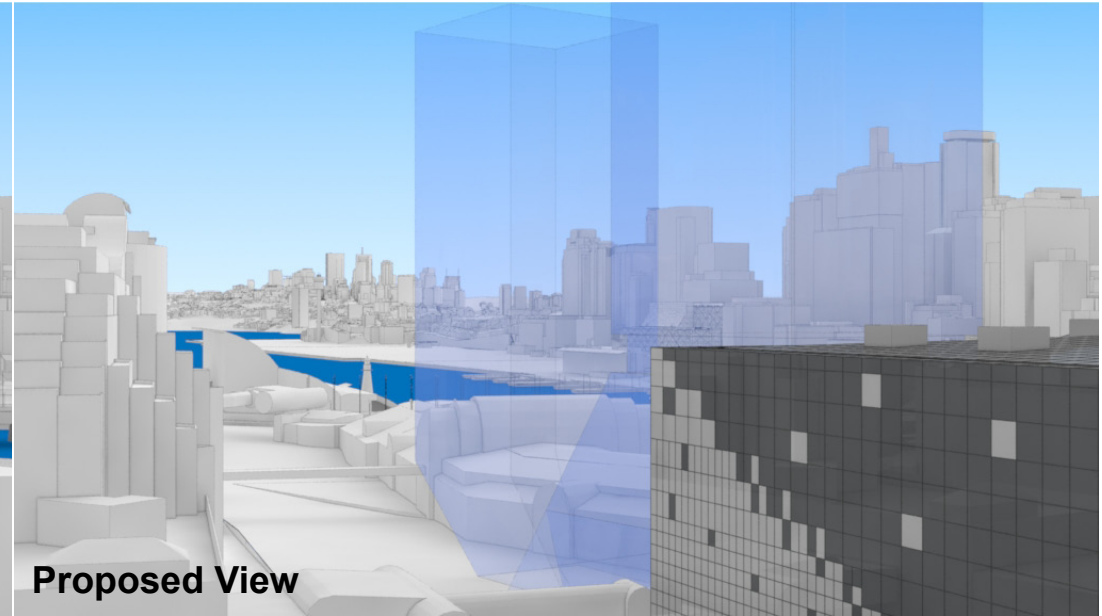
The Hotel shown in these images does not form part of this development application (and will be the subject of a separate development assessment process) and is included for information and broader illustrative purposes. Illustrative designs of built forms in the Haymarket precinct do not form part of this development application (and will be the subject of separate development assessment processes) and is shown for information and broader illustrative purposes. These images are produced here for view analysis purposes only.

**LEGEND:** 43

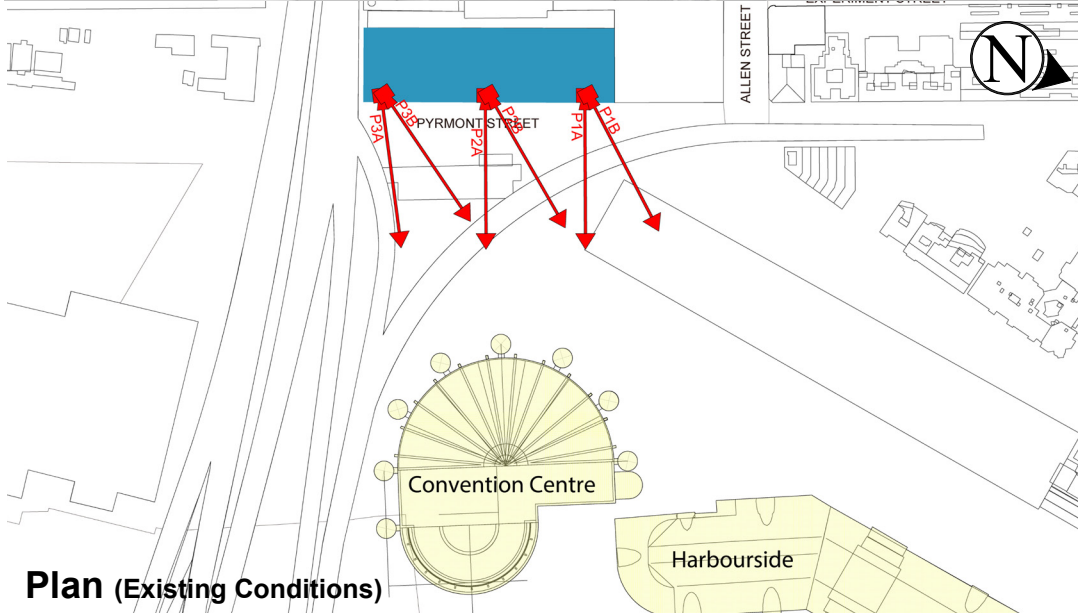
- Key Building
- Neighbouring Buildings
- View Direction (50mm Camera)
- Camera Position
- Hotel (subject of a future separate DA.)



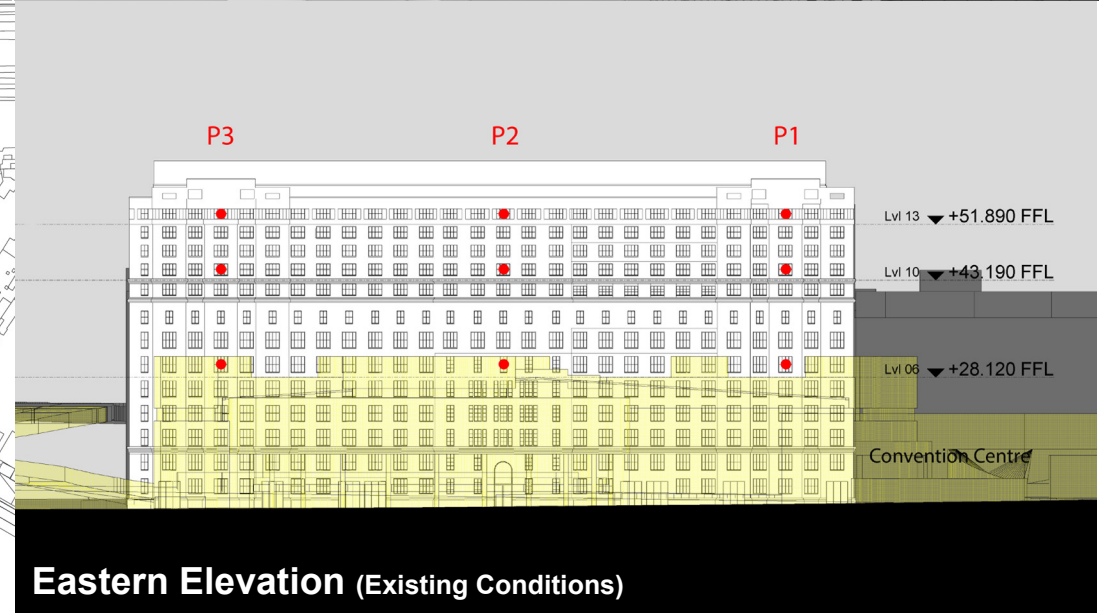
Existing View



Proposed View



Plan (Existing Conditions)



Eastern Elevation (Existing Conditions)

# Oaks Goldsbrough Apartments

Position: P3B

Level: 06

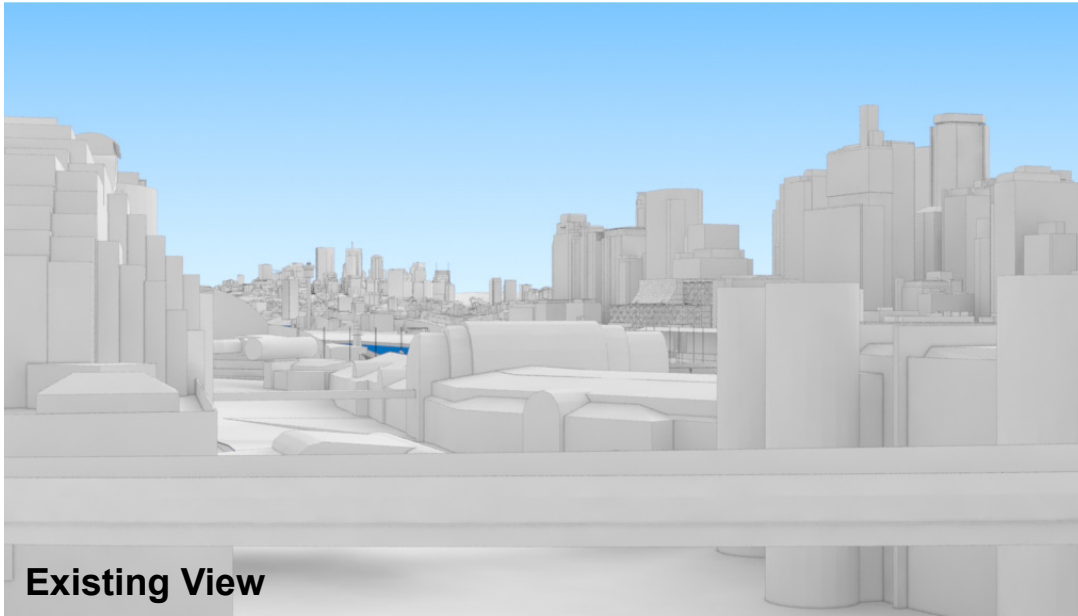
RL: 29.720 (Camera Height)

FOR INFORMATION ONLY

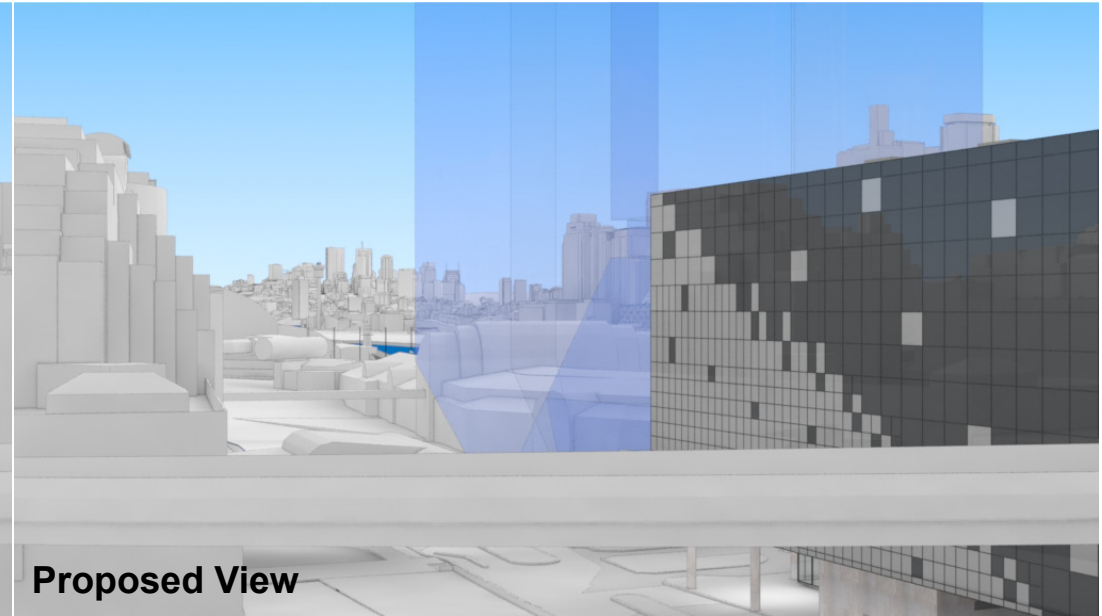
The Hotel shown in these images does not form part of this development application (and will be the subject of a separate development assessment process) and is included for information and broader illustrative purposes. Illustrative designs of built forms in the Haymarket precinct do not form part of this development application (and will be the subject of separate development assessment processes) and is shown for information and broader illustrative purposes. These images are produced here for view analysis purposes only.

**LEGEND:** 44

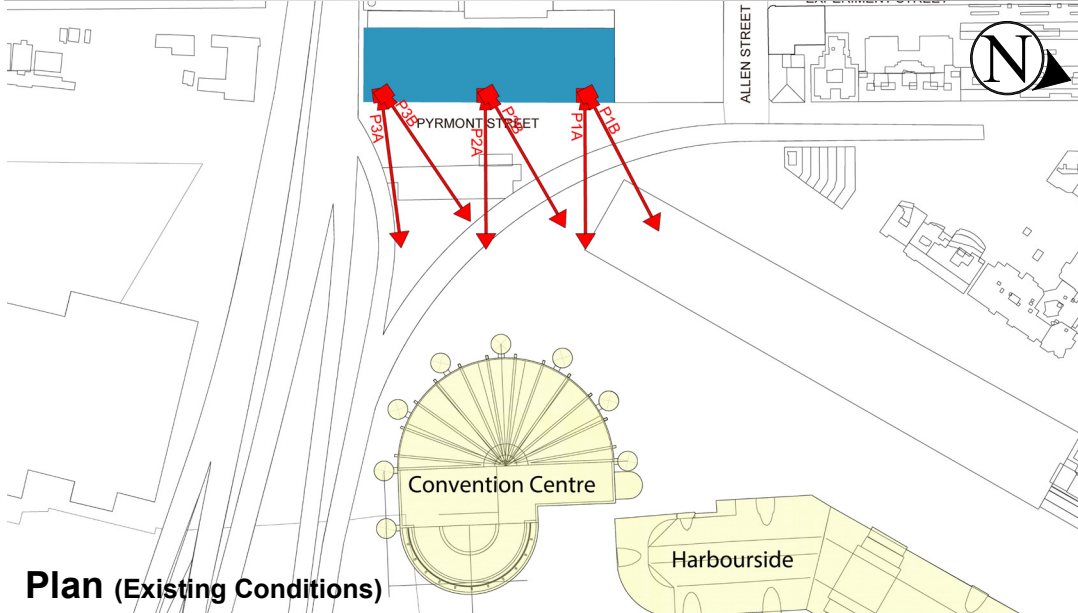
- Key Building
- Neighbouring Buildings
- View Direction (50mm Camera)
- Camera Position
- Hotel (subject of a future separate DA.)



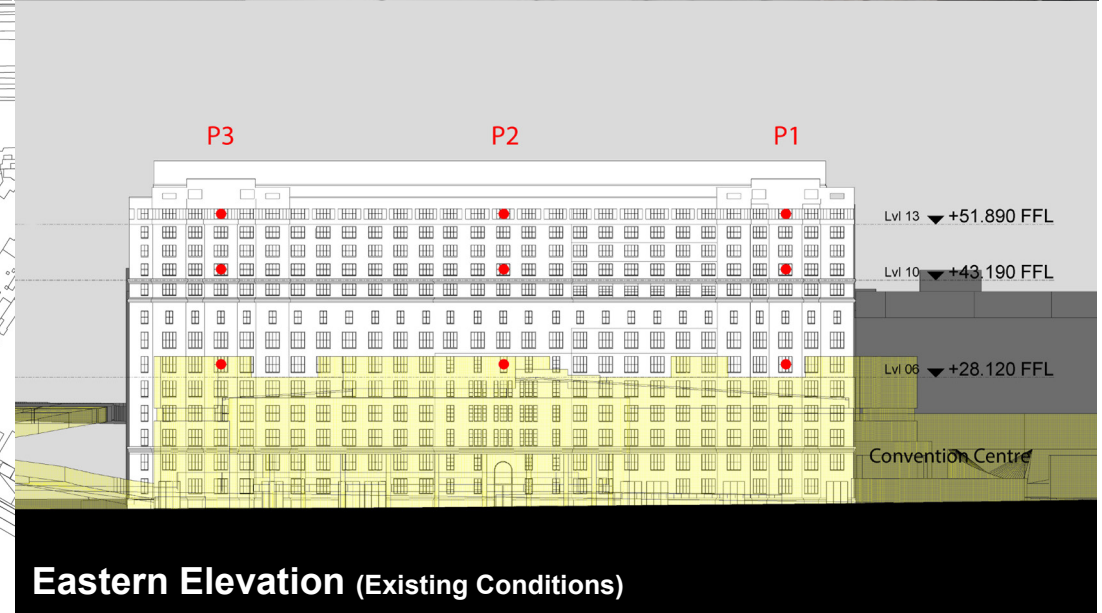
Existing View



Proposed View



Plan (Existing Conditions)



Eastern Elevation (Existing Conditions)



**"GOLDSBROUGH APARTMENTS"**

REV.	DATE	AMENDMENTS
B	12/3/2013	SHEET LAYOUT AMENDED TO SINGLE PHOTO PER PAGE
A	18/2/2013	HARRIS STRREET PROPERTY AND NOVOTEL LOCATIONS ADDED

**COPYRIGHT © RYGATE & COMPANY PTY. LIMITED 2013.**  
 NO PART OF THIS PLAN MAY BE REPRODUCED, COMMUNICATED, STORED IN A RETRIEVAL SYSTEM OR TRANSMITTED IN ANY FORM WITHOUT THE WRITTEN PERMISSION OF THE COPYRIGHT OWNER EXCEPT AS PERMITTED BY THE COPYRIGHT ACT 1968. ANY PERMITTED DOWNLOADING, ELECTRONIC STORAGE, DISPLAY, PRINT, COPY, REPRODUCTION OR COMMUNICATION OF THIS SURVEY SHOULD CONTAIN NO ALTERATION OR ADDITION TO THE ORIGINAL SURVEY.



DATUM : AUSTRALIAN HEIGHT DATUM  
 CONTOUR INTERVAL : N/A  
 ORIGIN OF LEVELS : P.M.55082  
 R.L.3.288 A.H.D.



**Rygate & Company**  
 Pty Limited  
 P.W. Rygate & West  
 ABN 61 001 204 897

Level 9, 89 York St  
 Sydney NSW 2000  
 P +61 2 9262 6800  
 F +61 2 9262 6843  
 E surveyors@rygate.com.au  
 W rygate.com.au

SUBDIVISION | STRATA PLANS | STRATUM SUBDIVISION | LEASE PLANS | TOPOGRAPHIC SURVEYS | GPS SURVEYS | 3D MODELLING | RACECOURSE DESIGN | PROJECT MANAGEMENT | SUN SHADOW DIAGRAMS

SURVEYOR	DRAWN	CHECKED	APPROVED
-	-	-	-

CLIENT	LEND LEASE
LOCALITY	DARLING HARBOUR
L.G.A.	SYDNEY

<b>PLAN</b>			
SHOWING M.G.A. & A.H.D. VALUES FOR CAMERA LOCATIONS			
REFERENCE No.	PLAN No.	DATE	SHEET No.
75706		7/2/2013	5
			OF 13 SHEETS