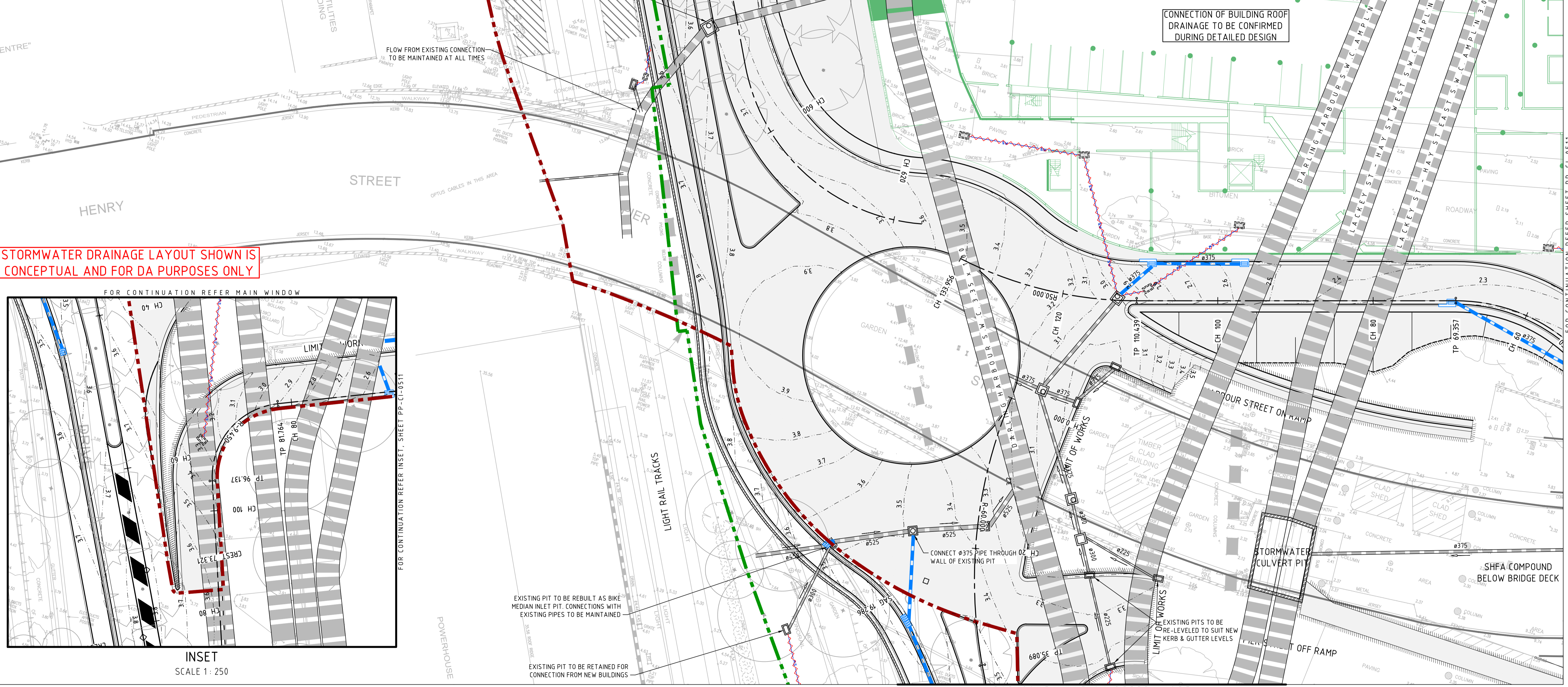
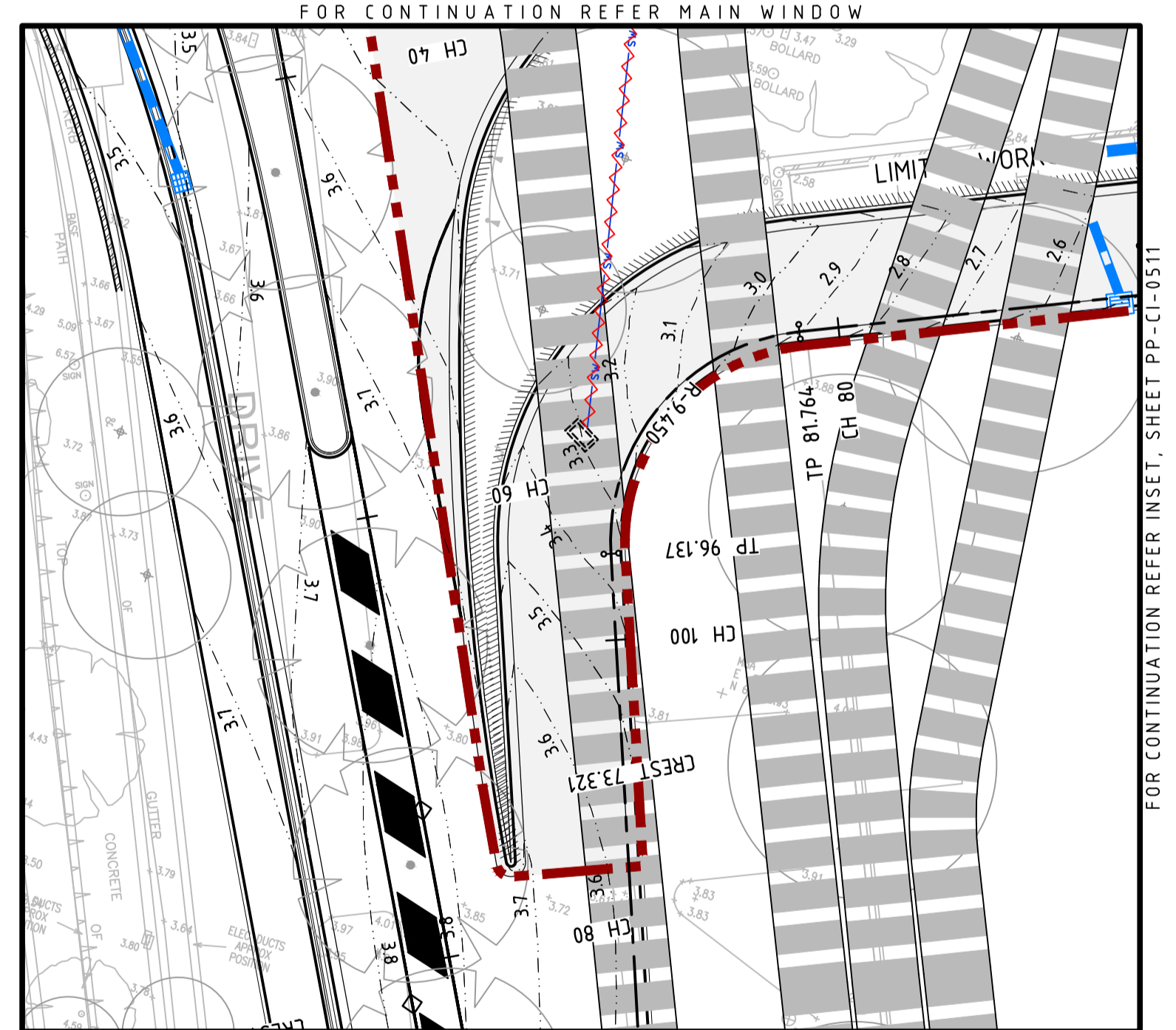


**LEGEND**

- EXISTING PIPE/CULVERT TO BE RETAINED
- EXISTING PIPE/CULVERT TO BE DEMOLISHED
- EXISTING PIT TO BE RETAINED (OUTLINE SHOWN INDICATIVE ONLY)
- EXISTING PIT TO BE DEMOLISHED (OUTLINE SHOWN INDICATIVE ONLY)
- PROPOSED PIPE/CULVERT
- KERB INLET PIT
- SURFACE INLET PIT
- JUNCTION PIT
- DRAINAGE CHANNEL



STORMWATER DRAINAGE LAYOUT SHOWN IS CONCEPTUAL AND FOR DA PURPOSES ONLY



INSET  
SCALE 1:250

**DARLING HARBOUR LIVE**

REFERENCE MAP

1  
2  
3  
4  
5  
6  
P.D.A.

**NOTES:**

- DO NOT SCALE FROM DRAWINGS. WORK TO WRITTEN DIMENSIONS ONLY.
- ALL DIMENSIONS IN METRES UNLESS NOTED OTHERWISE.
- ALL COORDINATES TO MGA. ALL LEVELS TO AHD.
- ALL DIMENSIONS, COORDINATES AND LEVELS TO BE VERIFIED ON SITE BEFORE PROCEEDING WITH WORK. HYDER SHALL BE NOTIFIED IN WRITING OF ANY DISCREPANCIES.
- THIS DRAWING MUST BE READ IN CONJUNCTION WITH ALL RELEVANT CONTRACTS, SPECIFICATIONS AND DRAWINGS.
- PRECINCT BOUNDARIES ARE INDICATIVE ONLY AND ARE SUBJECT TO CHANGE.

0 5 10 15 20 25m

1:250

REV	DESCRIPTION	DATE
A	ISSUE FOR DEVELOPMENT APPLICATION	14/03/2013

CLIENT  
**Lend Lease**  
PROJECT MANAGEMENT & CONSTRUCTION  
LEVEL 4, THE BOND, 30 HICKSON RD  
MILLERS POINT, NSW 2000

CONSULTANTS  
**AECOM** MECHANICAL / ELECTRICAL / FIRE SERVICES  
LEVEL 21, 420 GEORGE ST, SYDNEY  
NSW 2000

**Robert Bird Group**  
STRUCTURAL SERVICES  
LEVEL 5, 9 CASTLEREAGH ST, SYDNEY  
NSW 2000

**HASSELL + POPULOUS** ARCHITECT  
LEVEL 2, 88 CUMBERLAND STREET,  
SYDNEY NSW 2000

CIVIL / TRAFFIC / FACADES  
**HYDER CONSULTING PTY LTD**  
ABN 76 104 485 289  
LEVEL 5, 141 WALKER ST,  
NORTH SYDNEY NSW 2060  
AUSTRALIA

Tel: +61 (0)2 8907 9000  
Fax: +61 (0)2 8907 9001  
www.hyderconsulting.com  
© Copyright reserved

PROJECT  
**SICEP**  
**DARLING HARBOUR**  
**PRIVATE PUBLIC PARTNERSHIP (PPP)**

DRAWING TITLE  
**STORMWATER DRAINAGE PLAN**  
**SHEET 6**

STATUS  
**DEVELOPMENT APPLICATION**

SCALE @ A1	DRAWN	DESIGNED	REVIEWED	APPROVED
1:250	RR	RR	JH	GI
PROJECT NUMBER	DRAWING NUMBER	REV		
AA004399	PP-CI-0506	IA		

SYDNEY INTERNATIONAL CONVENTION, EXHIBITION AND ENTERTAINMENT PRECINCT

FOR CONTINUATION REFER SHEET PP-CI-0511