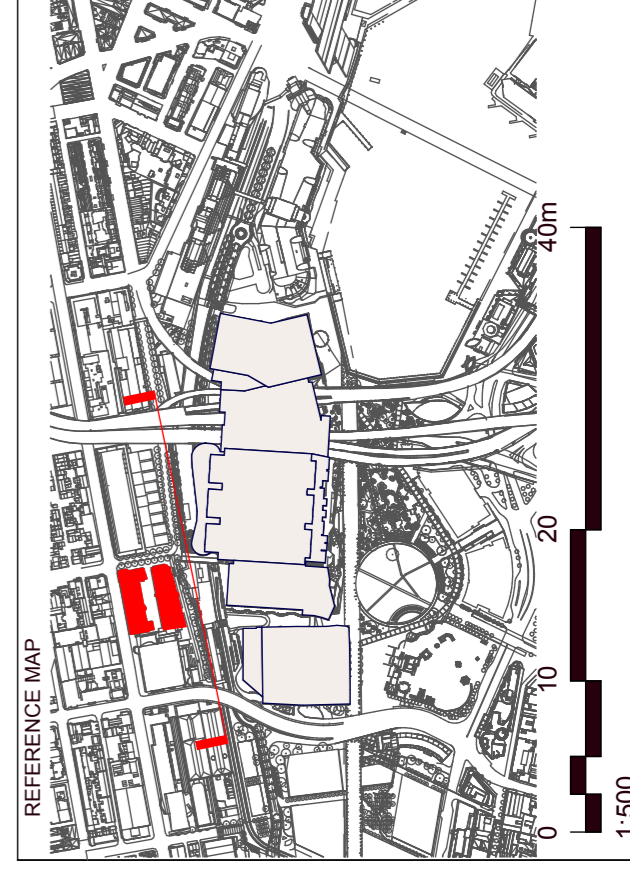


LEGEND
PROPOSED BUILDING PROFILE
EXISTING BUILDING PROFILE



THESE VIEW IMPACT ANALYSIS DRAWINGS ARE TO BE READ IN CONJUNCTION WITH THE SITE PLAN AND THE FIELD OF VIEW DOES NOT TAKE INTO ACCOUNT ANY RLS OF TALLER BUILDINGS BEYOND THE SITE OR REFERENCE BUILDINGS. THE BUILDING ENVELOPE REPRESENTS THE MAXIMUM EXTERNAL ENVELOPE AS SUBMITTED IN THE PAVIMENTATION PLAN.

NOTES

- DO NOT SCALE DRAWINGS. WRITTEN DIMENSIONS GOVERN.
- ALL DIMENSIONS ARE IN MILLIMETRES UNLESS NOTED OTHERWISE.
- ALL DIMENSIONS SHALL BE VERIFIED ON SITE BEFORE PROCEEDING WITH CONSTRUCTION.
- THESE PLANS ARE TO BE READ IN CONJUNCTION WITH ARCHITECTURAL, ENGINEERING, AND SERVICES DRAWINGS. SEE DRAWING SCHEDULE FOR MORE INFORMATION.
- ALL LEVELS ARE INDICATIVE ONLY BASED ON COMPOSITE SURVEY DATA PROVIDED BY LEND LEASE AND NOT TO BE RELIED UPON FOR COSTING OR CONSTRUCTION PURPOSES.

© COPYRIGHT OF THIS DRAWING IS VESTED IN HASSELL + POPULOUS, 2019 HASSELL + POPULOUS.

THIS DRAWING IS AN UNCONTROLLED COPY, UNLESS NOTED OTHERWISE.

REV	DESCRIPTION	DATE
A	ISSUED FOR DEVELOPMENT APPLICATION	17/06/2013

CLIENT
Lend Lease
 CONSULTANTS
AECOM
Robert Bird Group
Hyder

PROJECT MANAGEMENT & CONSTRUCTION
 LEVEL 4, THE BOND, 30 HICKSON RD
 MILLERS POINT, NSW 2000
 (02) 9236 9111

BUILDING / ENVIRONMENTAL SERVICES
 LEVEL 21, 420 GEORGE STREET
 SYDNEY NSW 2000
 (02) 9854 0000

STRUCTURAL SERVICES
 LEVEL 6, 9 CASTLEREAGH STREET
 SYDNEY NSW 2000
 (02) 9248 3200

CIVIL / TRAFFIC SERVICES
 5/41 WALKER ST, NORTH SYDNEY
 NSW 2060
 (02) 9587 9000

LANDSCAPE ARCHITECT - PRINCIPAL DESIGN CONSULTANT
 HASSELL + POPULOUS
 88 WALKER AND STREET
 SYDNEY NSW 2000 AUSTRALIA
 SYDNEY@HASSELLSTUDIO.COM
 T +61 2 9101 2000 F +61 2 9101 2100

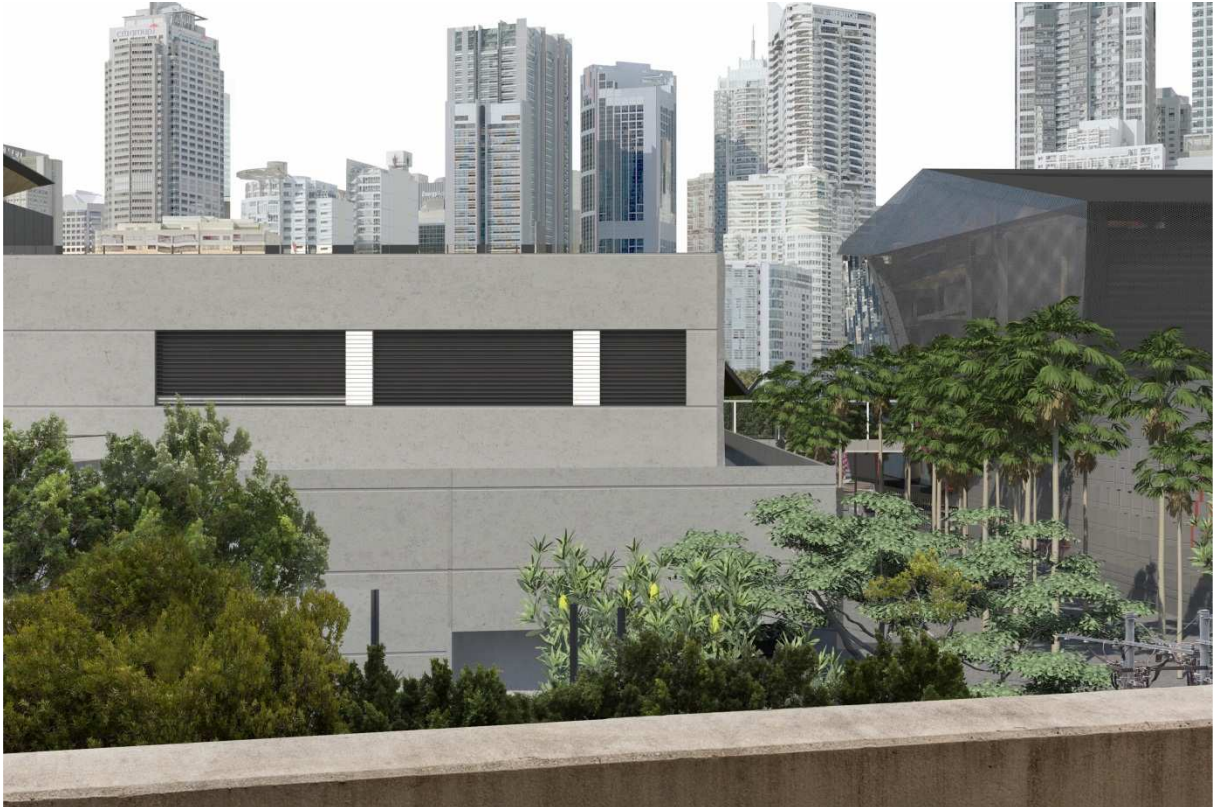
HASSELL + POPULOUS
 PROJECT
SICEEP_DARLING HARBOUR

DRAWING TITLE		STATUS	
VIEW IMPACT ANALYSIS. BULLECOURT - ELEVATION		DEVELOPMENT APPLICATION	
SCALE @ A1	DRAWN	CO-ORD	APPROVED
1:500	DH	GS	GS
PROJECT NUMBER	DRAWING NUMBER	REV	
3688	PP_AR_ID_900059	A	

FOR APPROVAL



SICEP-Bullecourt 311 E EXISTING



SICEP-Bullecourt 311 E



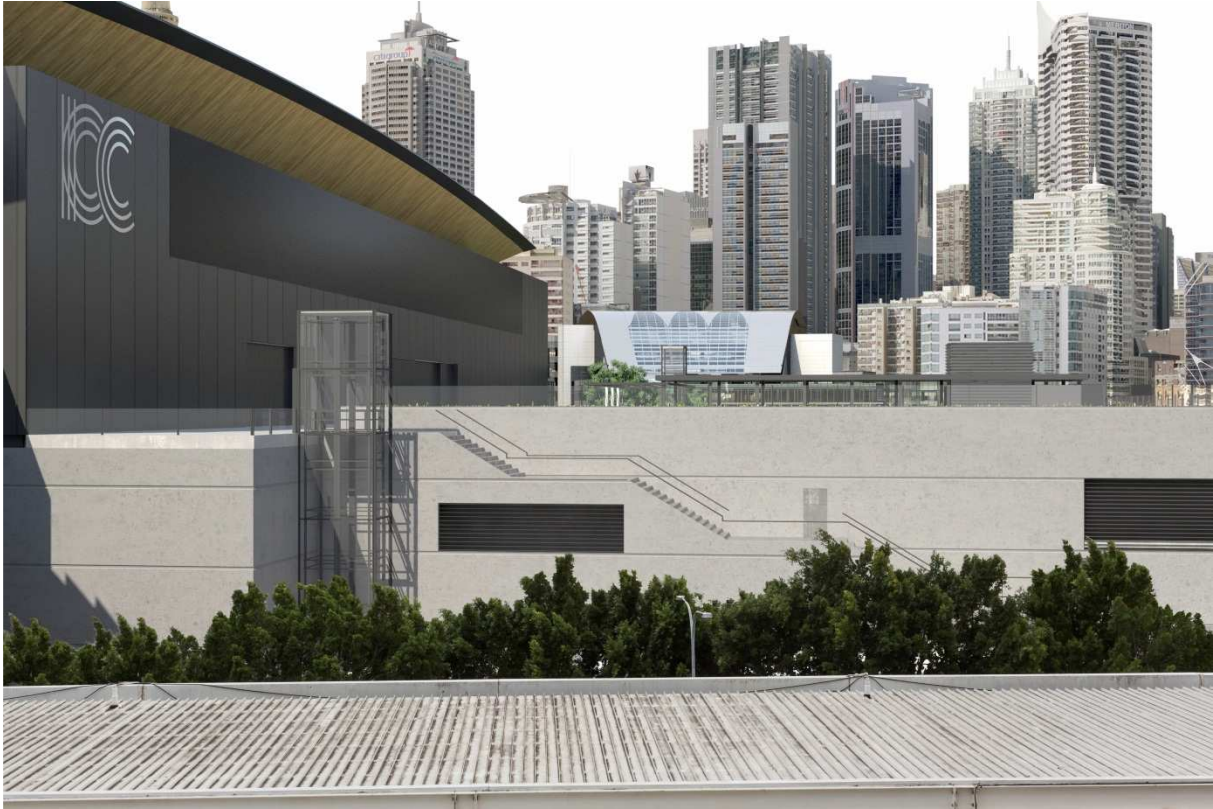
SICEP-Bullecourt 311 N EXISTING



SICEP-Bullecourt 311 N



SICEEP-Bullecourt 406 E Existing



SICEEP-Bullecourt 406 E



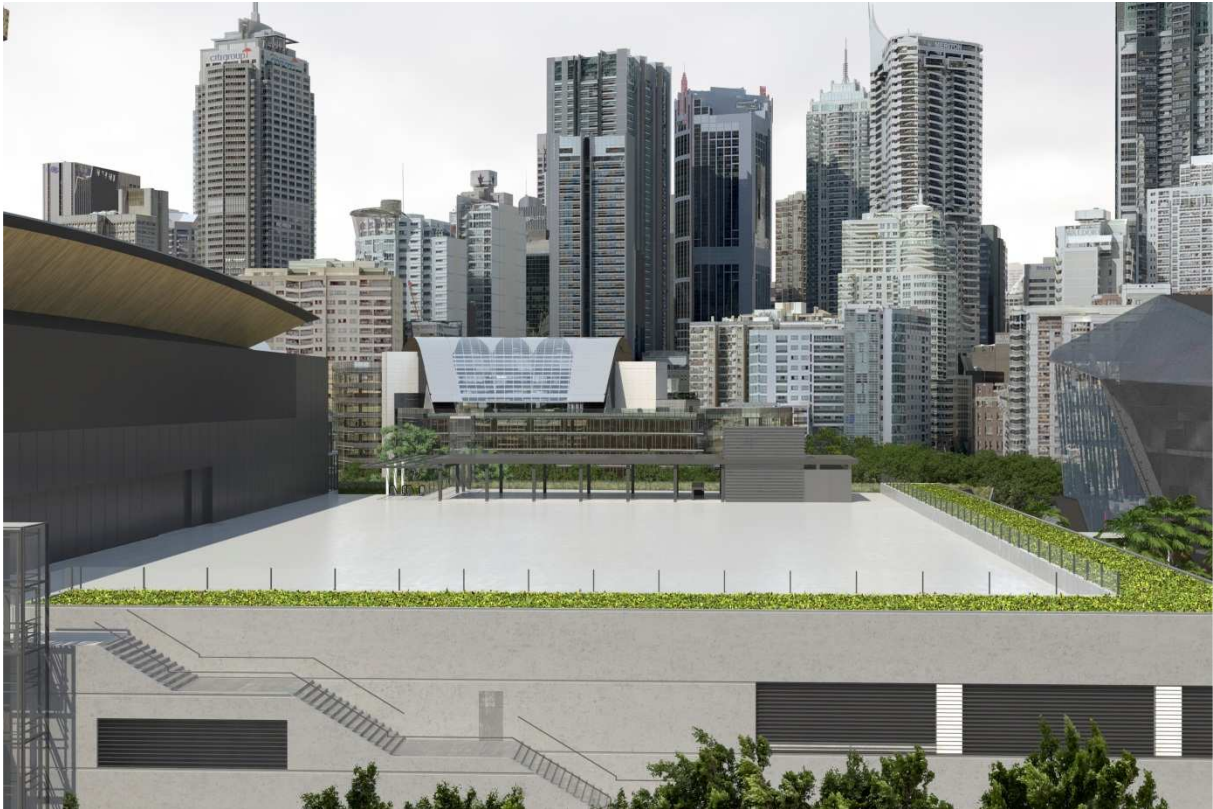
SICEP-Bullecourt 406 N EXISTING



SICEP-Bullecourt 406 N



SICEP-Bullecourt 805 E EXISTING



SICEP-Bullecourt 805 E



SICEP-Bullecourt 805 E EXISTING



SICEP-Bullecourt 805 E



SICEP-Bullecourt 805 N EXISTING



SICEP-Bullecourt 805 N



SICEP-Bullecourt 805 NE EXISTING



SICEP-Bullecourt 805 N

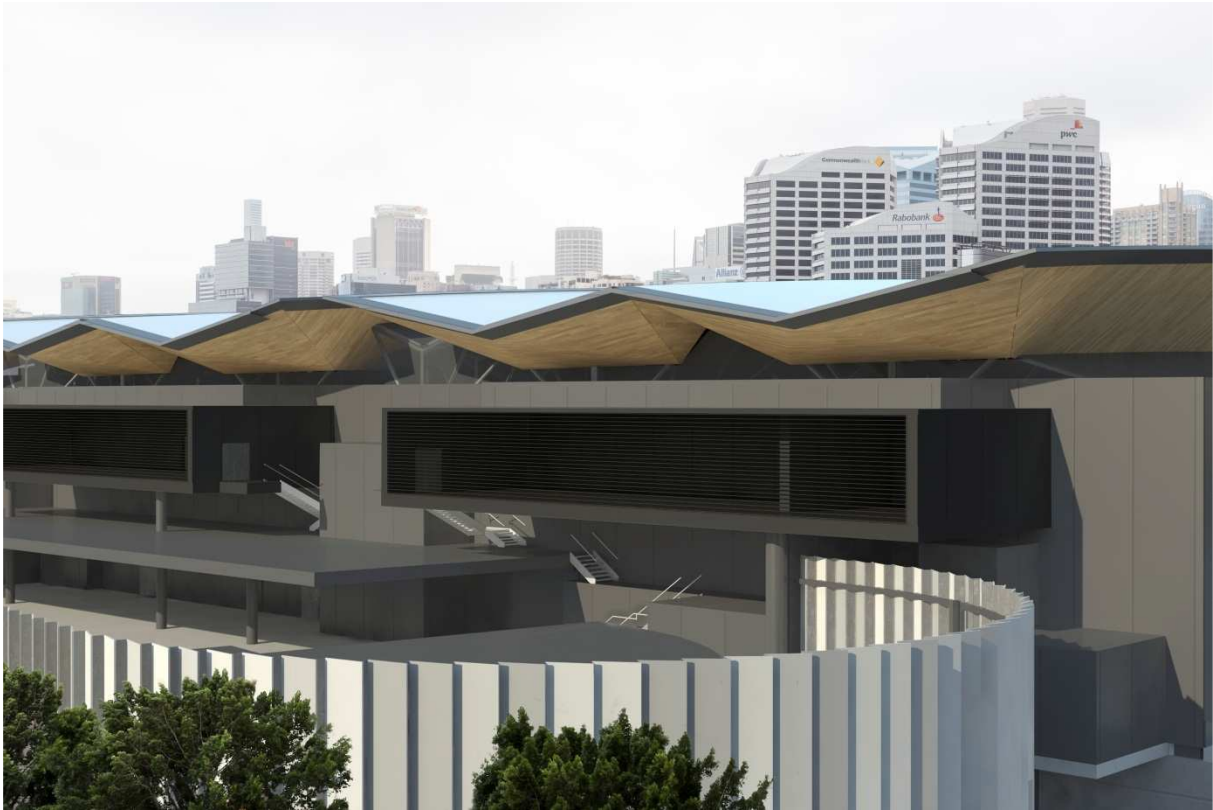


SICEP-Bullecourt 906 E EXISTING





SICEP-Bullecourt 906 NE EXISTING



SICEP-Bullecourt 906 NE



SICEP-Bullecourt 913 E EXISTING



SICEP-Bullecourt 913 E



SICEP-Bullecourt 913 N EXISTING



SICEP-Bullecourt 913 N